



**Office of Temporary
and Disability Assistance**

Temporary and Disability Assistance Statistics

April 2015



Temporary and Disability Assistance Statistics

APRIL 2015

Temporary Assistance

Temporary Assistance recipients totaled 575,508 in April 2015, decreasing by 1,624 (-0.3%) from the previous month. Related expenditures totaled \$190,968,097 in April 2015, decreasing by approximately \$4.1 million (-2.1%) over March 2015.

Supplemental Nutrition Assistance Program

Supplemental Nutrition Assistance Program recipients totaled 3,039,251 in April 2015, decreasing by 10,807 (-0.4%) from the previous month. Related expenditures totaled \$421,193,289 in April 2015, decreasing by approximately \$3.9 million (-0.9%) over March 2015.

Supplemental Security Income

Supplemental Security Income recipients (including Mental Hygiene) totaled 710,674 in April 2015, decreasing by 3,653 (-0.5%) from the previous month. Related expenditures totaled \$418,607,937 in April 2015, decreasing by \$957,068 (-0.2%) over March 2015.

Note: New York State's October 2014 administrative takeover of the State Supplement portion of the Supplemental Security Income (SSI) benefit precipitated systems changes that disrupted the pre-existing statistical reporting processes for the SSI program overall. This has resulted in overcounting program participants and possibly expenditures on the monthly reports from October 2014 to the present. The New York State Office of Information Technology Services is working on tracing and correcting the cause of this problem, but, until these adjustments are made, the SSI statistics contained in this report are included to fulfill statutory reporting requirements only and should not be used for trending or other purposes.

Date Issued June 29, 2015

Table of Contents

Ten Year Trend Graphs

Temporary Assistance Recipients	4
Supplemental Nutrition Assistance Program Recipients	4
Supplemental Security Income Recipients	4

Temporary Assistance, SSI and SNAP Summary

Table 1:	Temporary Assistance, Family Assistance-FP, Safety Net Assistance, Supplemental Security Income and Supplemental Nutrition Assistance Program Cases by Region	5
Table 2:	Temporary Assistance, Family Assistance-FP, Safety Net Assistance, Supplemental Security Income and Supplemental Nutrition Assistance Program Recipients by Region	5
Table 3:	Temporary Assistance, Family Assistance-FP, Safety Net Assistance, Supplemental Security Income and Supplemental Nutrition Assistance Program Expenditures by Region	5

Temporary Assistance by Program Area

Table 4:	Temporary Assistance Year to Year Monthly Comparison Cases, Recipients and Expenditures	6
Table 5:	Temporary Assistance Cases, Recipients, Children, Adults and Expenditures	7
Table 6:	Family Assistance-FP Cases, Recipients, Children, Adults and Expenditures	8
Table 7:	Safety Net Assistance Cases, Recipients, Children, Adults and Expenditures	9

Temporary Assistance by Funding Source and Program Area

Table 8:	Temporary Assistance by Funding Source (Federally Participating and Federally Non-Participating) Cases, Recipients and Expenditures	10
Table 9:	Temporary Assistance for Needy Families-FP by Program (Family Assistance-FP and Safety Net Assistance-FP) Cases, Recipients, Children, Adults and Expenditures	11
Table 10:	Safety Net Assistance-FNP and Family Assistance-FNP Cases, Recipients, Children, Adults and Expenditures	12
Table 11:	Safety Net Assistance-FNP by Maintenance of Effort Status Cases, Recipients, Children, Adults and Expenditures	13
Table 12:	Safety Net Assistance-FNP-Cash Total Cases, Recipients, Children, Adults and Expenditures	14
Table 13:	Safety Net Assistance-FNP-Cash by Maintenance of Effort Status Cases, Recipients, Children, Adults and Expenditures	15
Table 14:	Safety Net Assistance-FNP-Non-Cash Total Cases, Recipients, Children, Adults and Expenditures	16
Table 15:	Safety Net Assistance-FNP-Non-Cash by Maintenance of Effort Status Cases, Recipients, Children, Adults and Expenditures	17

Supplemental Nutrition Assistance Program

Table 16:	Supplemental Nutrition Assistance Program Households, Persons and Value of Supplemental Nutrition Assistance Program Benefits	18
------------------	---	----

Supplemental Security Income

Table 17:	Supplemental Security Income Recipients, Total Program Expenditures and Federal and State Shares	19
Table 18:	Supplemental Security Income Recipients by Living Arrangement and Location	20
Table 19:	Supplemental Security Income Recipients by Living Arrangement and Category of Assistance	20

Table of Contents

Child Support

Table 20:	Child Support Collections (IV-D)	21
------------------	----------------------------------	----

Aggregate Claims

Table 21:	Aggregate Claims - Total Temporary Assistance	22
Table 22:	Aggregate Claims - Federally Participating - TANF	23
Table 23:	Aggregate Claims - Federally Non-Participating Safety Net Assistance-FNP Maintenance of Effort	24
Table 24:	Aggregate Claims - Federally Non-Participating Safety Net Assistance-FNP and Family Assistance-FNP Maintenance of Effort	25

Home Energy Assistance Program

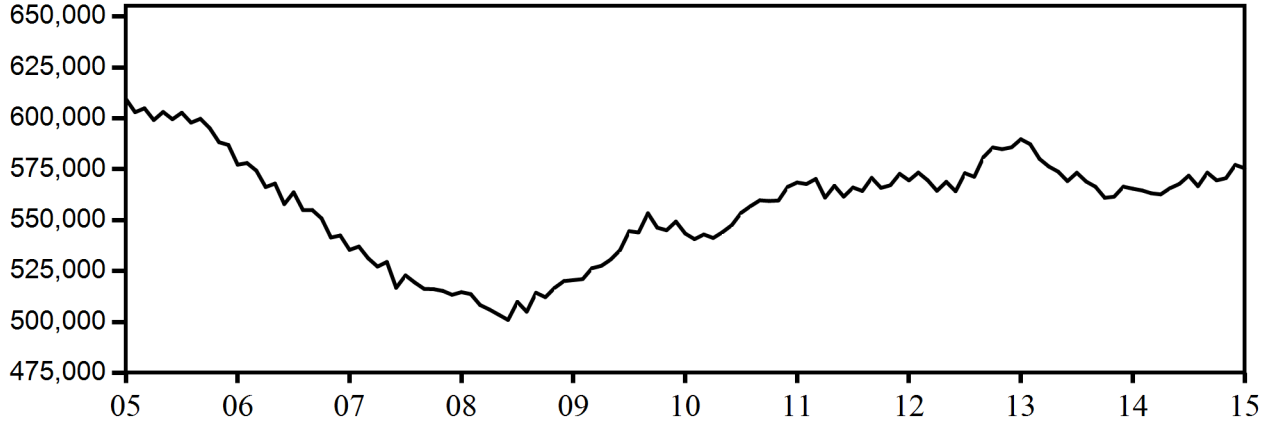
Table 25:	Home Energy Assistance Program Number and Dollar Amount of Benefits Authorized and Administrative Allocations	26
Table 26:	Home Energy Assistance Program - Non-Emergency Number, Total Dollar Amount and Average Dollar Amount of Benefits Authorized	27
Table 27:	Home Energy Assistance Program - Emergency Number, Total Dollar Amount and Average Dollar Amount of Benefits Authorized	28

Welfare to Work Statistical Tables

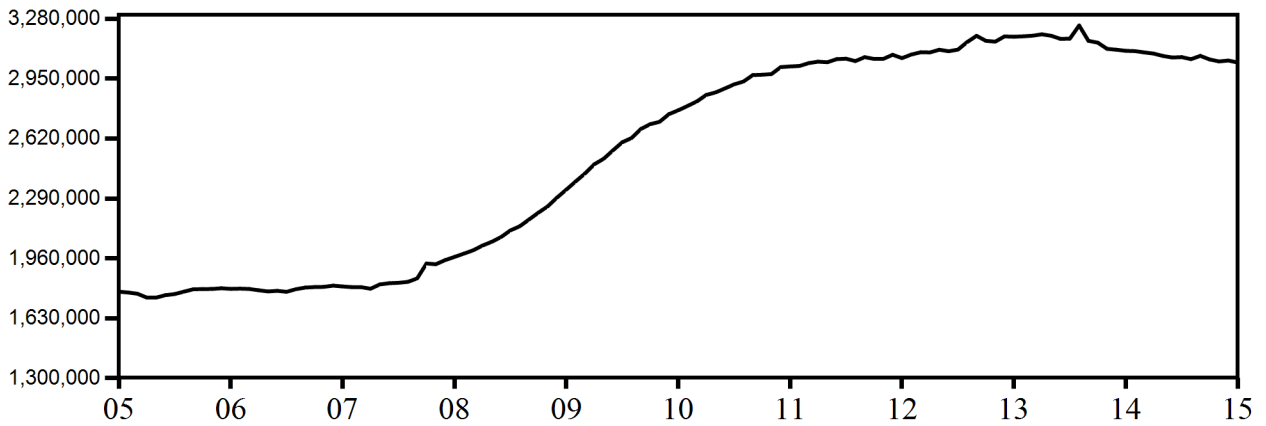
Table 28:	Federal All Families Work Participation Rates TANF, Safety Net Assistance MOE and Combined TANF and Safety Net Assistance MOE	29
Table 29:	Work Sanction Status by Presence in Federal All Families Work Participation Calculation TANF, Safety Net Assistance MOE and Combined TANF and Safety Net Assistance MOE	30
Table 30:	Temporary Assistance Cases with Earned Income Cases, Average Gross Earned Income and Average Net Earned Income after Application of Disregards	31

**NEW YORK STATE
May 2005 - April 2015
TEN YEAR TREND**

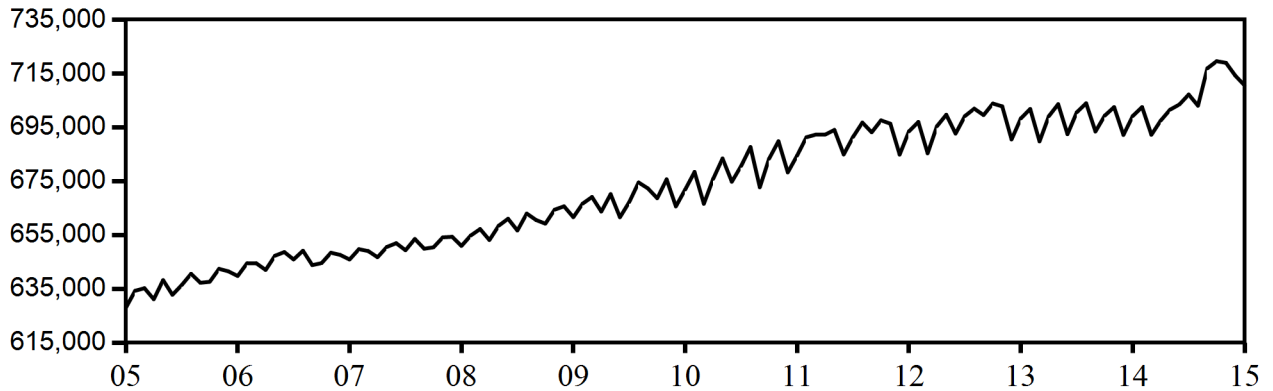
Temporary Assistance Recipients



Supplemental Nutrition Assistance Program Recipients



**Supplemental Security Income Recipients
(Including Mental Hygiene)**



SELECTED SUMMARY PROGRAM DATA
BY REGION

Table 1
TEMPORARY AND DISABILITY ASSISTANCE CASES
April 2015

Region	Cases				
	Temporary Assistance by Program			Supplemental Security Income	Supplemental Nutrition Assistance Program
	Total	Family Assistance-FP	Safety Net Assistance		
New York State	302,293	105,922	196,371	705,859	1,667,152
New York City	187,860	58,293	129,567	428,705	957,565
Rest of State	114,433	47,629	66,804	277,154	709,587

Table 2
TEMPORARY AND DISABILITY ASSISTANCE RECIPIENTS
April 2015

Region	Recipients				
	Temporary Assistance by Program			Supplemental Security Income	Supplemental Nutrition Assistance Program
	Total	Family Assistance-FP	Safety Net Assistance		
New York State	575,508	245,523	329,985	705,859	3,039,251
New York City	349,039	134,845	214,194	428,705	1,709,929
Rest of State	226,469	110,678	115,791	277,154	1,329,322

Table 3
TEMPORARY AND DISABILITY ASSISTANCE EXPENDITURES
April 2015

Region	Expenditures				
	Temporary Assistance by Program			Supplemental Security Income	Supplemental Nutrition Assistance Program
	Total	Family Assistance-FP	Safety Net Assistance		
New York State	\$190,968,097	\$68,124,348	\$122,843,749	\$416,461,027	\$421,193,289
New York City	115,255,210	35,161,267	80,093,943	255,617,545	247,743,033
Rest of State	75,712,887	32,963,081	42,749,806	160,843,482	173,450,256

Note: Supplemental Security Income data listed here do not include Mental Hygiene data. See Tables 17 - 19 for total Supplemental Security Income data.

Table 4
TEMPORARY ASSISTANCE
 Year to Year Monthly Comparison by Local District
 Cases, Recipients and Expenditures
 April 2015

Local District	April 2015			April 2014			April 2013		
	Cases	Recipients	Expenditures	Cases	Recipients	Expenditures	Cases	Recipients	Expenditures
New York State	302,293	575,508	\$190,968,097	298,045	565,463	\$190,814,356	310,757	589,725	\$192,959,485
New York City	187,860	349,039	115,255,210	180,202	332,074	111,273,706	194,097	359,652	117,236,409
Rest of State	114,433	226,469	75,712,887	117,843	233,389	79,540,650	116,660	230,073	75,723,076
Albany	2,673	5,817	1,727,539	2,857	6,216	2,009,964	3,152	6,721	2,094,623
Allegany	490	897	272,640	526	1,029	266,421	593	1,144	292,228
Broome	3,821	7,163	2,014,680	3,842	7,282	2,166,182	3,889	7,527	2,172,953
Cattaraugus	676	1,074	366,145	596	953	321,000	559	863	242,819
Cayuga	875	1,616	515,954	854	1,594	509,158	741	1,447	428,756
Chautauqua	2,734	5,672	1,489,690	2,665	5,815	1,532,535	2,725	5,951	1,610,671
Chemung	796	1,377	427,783	830	1,457	443,221	813	1,501	443,755
Chenango	474	806	219,756	399	691	184,697	410	707	193,738
Clinton	882	1,399	526,925	905	1,511	564,303	940	1,581	524,343
Columbia	537	979	432,769	630	1,161	356,543	617	1,119	369,328
Cortland	642	1,055	342,415	698	1,250	403,226	641	1,137	355,668
Delaware	286	512	148,431	359	598	177,574	321	514	155,078
Dutchess	1,304	2,360	1,048,919	1,411	2,554	1,131,121	1,453	2,707	1,016,891
Erie	14,919	32,658	7,804,258	14,514	31,717	7,957,158	13,848	29,554	7,307,175
Essex	121	184	65,670	159	256	106,967	146	243	78,400
Franklin	572	1,029	314,722	559	1,046	312,248	559	1,027	304,725
Fulton	317	512	183,417	395	639	229,782	363	625	194,634
Genesee	325	622	196,893	335	617	188,257	313	594	175,330
Greene	424	758	255,494	610	1,139	441,420	641	1,233	388,329
Hamilton	17	25	6,345	19	28	8,167	19	28	6,340
Herkimer	549	960	278,571	539	963	289,564	557	1,000	289,169
Jefferson	1,198	2,086	695,976	1,065	1,749	622,725	969	1,564	569,781
Lewis	125	211	65,154	130	212	73,493	124	195	59,675
Livingston	850	1,594	457,303	884	1,682	466,637	784	1,470	431,998
Madison	437	757	286,793	406	735	237,304	389	739	218,956
Monroe	15,646	32,091	9,159,653	16,647	33,783	9,097,310	16,656	33,382	8,928,335
Montgomery	523	1,222	303,057	608	1,404	467,152	598	1,362	403,266
Nassau	7,715	13,931	5,528,208	7,397	13,579	4,967,601	7,683	13,939	5,897,437
Niagara	3,324	6,439	1,654,539	3,327	6,351	1,721,199	3,320	6,309	1,701,958
Oneida	4,554	10,766	2,504,946	4,503	10,575	2,472,384	4,293	9,900	2,513,463
Onondaga	7,214	15,891	4,065,392	7,478	16,035	4,061,629	7,902	16,549	4,134,291
Ontario	949	1,567	573,452	924	1,569	546,411	823	1,460	447,392
Orange	2,797	5,889	2,171,399	3,156	6,649	2,786,701	3,400	7,119	3,111,827
Orleans	716	1,262	374,203	753	1,385	407,062	690	1,215	357,219
Oswego	1,783	3,728	959,602	1,798	3,773	1,037,757	1,643	3,435	896,066
Otsego	224	325	163,221	216	310	150,210	264	406	198,332
Putnam	137	188	132,460	130	192	84,779	124	170	107,499
Rensselaer	1,712	4,117	1,075,086	1,762	4,396	1,207,772	1,743	4,327	1,140,804
Rockland	1,459	2,832	902,563	1,597	3,145	969,921	1,690	3,384	1,084,533
St. Lawrence	1,340	2,587	695,159	1,351	2,644	757,085	1,256	2,461	683,196
Saratoga	421	624	260,482	474	674	307,238	409	588	274,222
Schenectady	1,860	4,136	1,216,568	2,122	4,591	1,558,205	1,873	4,017	1,217,462
Schoharie	190	335	115,052	241	417	141,678	215	373	158,196
Schuyler	242	474	149,971	275	505	175,228	254	454	158,513
Seneca	308	582	197,727	287	549	158,852	220	377	129,307
Steuben	997	1,871	497,152	1,121	2,114	630,732	987	1,865	511,434
Suffolk	11,879	20,512	12,373,627	12,406	21,482	12,202,122	11,671	20,872	10,233,251
Sullivan	643	1,307	503,739	841	1,748	563,077	1,035	2,129	640,881
Tioga	378	587	206,584	410	693	252,557	403	663	284,162
Tompkins	856	1,460	479,455	935	1,625	523,849	897	1,606	509,966
Ulster	2,222	4,046	1,669,968	2,223	4,081	1,544,769	2,226	4,103	1,501,792
Warren	279	438	198,266	243	396	155,325	234	372	153,800
Washington	331	541	177,676	347	595	190,019	340	541	230,747
Wayne	670	1,107	344,076	686	1,146	380,844	646	1,085	365,580
Westchester	6,662	12,915	6,714,472	7,044	13,504	8,825,577	7,236	13,839	7,632,907
Wyoming	198	320	102,842	197	327	98,501	198	350	97,812
Yates	160	256	98,048	157	258	97,437	165	230	92,063

Table 5
TEMPORARY ASSISTANCE
Cases, Recipients, Children, Adults and Expenditures by Local District
April 2015

Local District	Temporary Assistance				
	Cases	Recipients	Children	Adults	Expenditures
New York State	302,293	575,508	296,485	279,023	\$190,968,097
New York City	187,860	349,039	169,702	179,337	115,255,210
Rest of State	114,433	226,469	126,783	99,686	75,712,887
Albany	2,673	5,817	3,538	2,279	1,727,539
Allegany	490	897	503	394	272,640
Broome	3,821	7,163	3,972	3,191	2,014,680
Cattaraugus	676	1,074	583	491	366,145
Cayuga	875	1,616	856	760	515,954
Chautauqua	2,734	5,672	3,200	2,472	1,489,690
Chemung	796	1,377	882	495	427,783
Chenango	474	806	443	363	219,756
Clinton	882	1,399	783	616	526,925
Columbia	537	979	517	462	432,769
Cortland	642	1,055	495	560	342,415
Delaware	286	512	315	197	148,431
Dutchess	1,304	2,360	1,510	850	1,048,919
Erie	14,919	32,658	18,909	13,749	7,804,258
Essex	121	184	115	69	65,670
Franklin	572	1,029	514	515	314,722
Fulton	317	512	309	203	183,417
Genesee	325	622	361	261	196,893
Greene	424	758	395	363	255,494
Hamilton	17	25	13	12	6,345
Herkimer	549	960	529	431	278,571
Jefferson	1,198	2,086	1,033	1,053	695,976
Lewis	125	211	133	78	65,154
Livingston	850	1,594	794	800	457,303
Madison	437	757	424	333	286,793
Monroe	15,646	32,091	18,044	14,047	9,159,653
Montgomery	523	1,222	787	435	303,057
Nassau	7,715	13,931	7,206	6,725	5,528,208
Niagara	3,324	6,439	3,495	2,944	1,654,539
Oneida	4,554	10,766	6,249	4,517	2,504,946
Onondaga	7,214	15,891	9,418	6,473	4,065,392
Ontario	949	1,567	795	772	573,452
Orange	2,797	5,889	3,494	2,395	2,171,399
Orleans	716	1,262	669	593	374,203
Oswego	1,783	3,728	2,080	1,648	959,602
Otsego	224	325	161	164	163,221
Putnam	137	188	94	94	132,460
Rensselaer	1,712	4,117	2,610	1,507	1,075,086
Rockland	1,459	2,832	1,688	1,144	902,563
St. Lawrence	1,340	2,587	1,344	1,243	695,159
Saratoga	421	624	392	232	260,482
Schenectady	1,860	4,136	2,636	1,500	1,216,568
Schoharie	190	335	191	144	115,052
Schuyler	242	474	241	233	149,971
Seneca	308	582	319	263	197,727
Steuben	997	1,871	1,020	851	497,152
Suffolk	11,879	20,512	9,722	10,790	12,373,627
Sullivan	643	1,307	855	452	503,739
Tioga	378	587	386	201	206,584
Tompkins	856	1,460	697	763	479,455
Ulster	2,222	4,046	2,037	2,009	1,669,968
Warren	279	438	235	203	198,266
Washington	331	541	336	205	177,676
Wayne	670	1,107	602	505	344,076
Westchester	6,662	12,915	7,523	5,392	6,714,472
Wyoming	198	320	187	133	102,842
Yates	160	256	144	112	98,048

Table 6
FAMILY ASSISTANCE-FP
Cases, Recipients, Children, Adults and Expenditures by Local District
April 2015

Local District	Family Assistance-FP				
	Cases	Recipients	Children	Adults	Expenditures
New York State	105,922	245,523	181,648	63,875	\$68,124,348
New York City	58,293	134,845	99,271	35,574	35,161,267
Rest of State	47,629	110,678	82,377	28,301	32,963,081
Albany	1,293	2,984	2,221	763	858,638
Allegany	224	491	371	120	144,325
Broome	1,569	3,394	2,566	828	889,659
Cattaraugus	303	611	486	125	168,332
Cayuga	377	870	629	241	231,558
Chautauqua	1,178	2,749	1,997	752	675,645
Chemung	409	839	704	135	227,312
Chenango	223	458	355	103	113,457
Clinton	424	797	650	147	226,777
Columbia	234	536	393	143	198,385
Cortland	246	544	395	149	137,091
Delaware	159	347	280	67	93,012
Dutchess	652	1,348	1,118	230	533,755
Erie	6,388	15,594	11,361	4,233	3,585,705
Essex	71	130	107	23	35,996
Franklin	218	490	351	139	124,172
Fulton	163	340	281	59	103,056
Genesee	163	385	288	97	98,235
Greene	158	331	250	81	88,429
Hamilton	8	16	13	3	3,778
Herkimer	261	556	422	134	134,044
Jefferson	455	1,043	784	259	257,011
Lewis	68	138	114	24	36,426
Livingston	349	828	570	258	209,045
Madison	207	434	326	108	121,253
Monroe	6,218	14,926	10,798	4,128	4,036,104
Montgomery	323	822	613	209	178,898
Nassau	2,826	6,347	4,767	1,580	2,247,370
Niagara	1,343	3,060	2,228	832	720,971
Oneida	1,934	5,091	3,641	1,450	1,125,408
Onondaga	3,228	7,840	5,750	2,090	1,903,400
Ontario	385	798	611	187	219,530
Orange	1,175	2,802	2,144	658	957,274
Orleans	277	570	428	142	154,938
Oswego	829	2,015	1,439	576	464,680
Otsego	101	180	141	39	71,295
Putnam	57	107	90	17	31,091
Rensselaer	971	2,302	1,648	654	564,589
Rockland	621	1,415	1,175	240	415,892
St. Lawrence	539	1,249	905	344	297,927
Saratoga	219	393	348	45	117,367
Schenectady	966	2,246	1,702	544	605,155
Schoharie	99	223	172	51	54,131
Schuyler	97	240	168	72	58,534
Seneca	122	279	213	66	70,836
Steuben	409	949	712	237	216,373
Suffolk	3,703	8,707	6,467	2,240	4,735,911
Sullivan	349	763	614	149	252,768
Tioga	229	412	351	61	120,744
Tompkins	304	643	462	181	167,225
Ulster	884	1,981	1,412	569	715,446
Warren	132	268	210	58	78,176
Washington	178	349	292	57	96,557
Wayne	314	650	502	148	168,769
Westchester	2,807	6,431	5,045	1,386	2,715,144
Wyoming	108	213	169	44	59,717
Yates	82	154	128	26	45,765

Table 7
SAFETY NET ASSISTANCE*
Cases, Recipients, Children, Adults and Expenditures by Local District
April 2015

Local District	Safety Net Assistance					Expenditures
	Cases	Recipients	Children	Adults		
New York State	196,371	329,985	114,837	215,148		\$122,843,749
New York City	129,567	214,194	70,431	143,763		80,093,943
Rest of State	66,804	115,791	44,406	71,385		42,749,806
Albany	1,380	2,833	1,317	1,516		868,901
Allegany	266	406	132	274		128,315
Broome	2,252	3,769	1,406	2,363		1,125,021
Cattaraugus	373	463	97	366		197,813
Cayuga	498	746	227	519		284,396
Chautauqua	1,556	2,923	1,203	1,720		814,045
Chemung	387	538	178	360		200,471
Chenango	251	348	88	260		106,299
Clinton	458	602	133	469		300,148
Columbia	303	443	124	319		234,384
Cortland	396	511	100	411		205,324
Delaware	127	165	35	130		55,419
Dutchess	652	1,012	392	620		515,164
Erie	8,531	17,064	7,548	9,516		4,218,553
Essex	50	54	8	46		29,674
Franklin	354	539	163	376		190,550
Fulton	154	172	28	144		80,361
Genesee	162	237	73	164		98,658
Greene	266	427	145	282		167,065
Hamilton	9	9	0	9		2,567
Herkimer	288	404	107	297		144,527
Jefferson	743	1,043	249	794		438,965
Lewis	57	73	19	54		28,728
Livingston	501	766	224	542		248,258
Madison	230	323	98	225		165,540
Monroe	9,428	17,165	7,246	9,919		5,123,549
Montgomery	200	400	174	226		124,159
Nassau	4,889	7,584	2,439	5,145		3,280,838
Niagara	1,981	3,379	1,267	2,112		933,568
Oneida	2,620	5,675	2,608	3,067		1,379,538
Onondaga	3,986	8,051	3,668	4,383		2,161,992
Ontario	564	769	184	585		353,922
Orange	1,622	3,087	1,350	1,737		1,214,125
Orleans	439	692	241	451		219,265
Oswego	954	1,713	641	1,072		494,922
Otsego	123	145	20	125		91,926
Putnam	80	81	4	77		101,369
Rensselaer	741	1,815	962	853		510,497
Rockland	838	1,417	513	904		486,671
St. Lawrence	801	1,338	439	899		397,232
Saratoga	202	231	44	187		143,115
Schenectady	894	1,890	934	956		611,413
Schoharie	91	112	19	93		60,921
Schuyler	145	234	73	161		91,437
Seneca	186	303	106	197		126,891
Steuben	588	922	308	614		280,779
Suffolk	8,176	11,805	3,255	8,550		7,637,716
Sullivan	294	544	241	303		250,971
Tioga	149	175	35	140		85,840
Tompkins	552	817	235	582		312,230
Ulster	1,338	2,065	625	1,440		954,522
Warren	147	170	25	145		120,090
Washington	153	192	44	148		81,119
Wayne	356	457	100	357		175,307
Westchester	3,855	6,484	2,478	4,006		3,999,328
Wyoming	90	107	18	89		43,125
Yates	78	102	16	86		52,283

* Includes Federally Non-Participating Family Assistance cases (non-disabled two-parent Family Assistance cases).

Table 8
TEMPORARY ASSISTANCE BY FUNDING SOURCE
 Cases, Recipients, and Expenditures by Local District
 April 2015

Local District	Total			Federally Participating-TANF Family Assistance-FP and Safety Net Assistance-FP			Federally Non-Participating Safety Net Assistance-FNP and Family Assistance-FNP		
	Cases	Recipients	Expenditures	Cases	Recipients	Expenditures	Cases	Recipients	Expenditures
New York State	302,293	575,508	\$190,968,097	107,228	248,893	\$68,986,923	195,065	326,615	\$121,981,174
New York City	187,860	349,039	115,255,210	58,499	135,267	35,248,241	129,361	213,772	80,006,969
Rest of State	114,433	226,469	75,712,887	48,729	113,626	33,738,682	65,704	112,843	41,974,205
Albany	2,673	5,817	1,727,539	1,309	3,026	869,110	1,364	2,791	858,429
Allegany	490	897	272,640	225	495	146,341	265	402	126,299
Broome	3,821	7,163	2,014,680	1,618	3,518	917,074	2,203	3,645	1,097,606
Cattaraugus	676	1,074	366,145	314	636	175,059	362	438	191,086
Cayuga	875	1,616	515,954	398	927	244,848	477	689	271,106
Chautauqua	2,734	5,672	1,489,690	1,190	2,777	681,478	1,544	2,895	808,212
Chemung	796	1,377	427,783	416	864	233,098	380	513	194,685
Chenango	474	806	219,756	228	472	115,661	246	334	104,095
Clinton	882	1,399	526,925	434	819	234,102	448	580	292,823
Columbia	537	979	432,769	239	550	202,765	298	429	230,004
Cortland	642	1,055	342,415	257	581	143,833	385	474	198,582
Delaware	286	512	148,431	160	353	93,258	126	159	55,173
Dutchess	1,304	2,360	1,048,919	658	1,362	538,606	646	998	510,313
Erie	14,919	32,658	7,804,258	6,470	15,815	3,631,924	8,449	16,843	4,172,334
Essex	121	184	65,670	72	132	36,227	49	52	29,443
Franklin	572	1,029	314,722	221	496	127,470	351	533	187,252
Fulton	317	512	183,417	166	345	105,434	151	167	77,983
Genesee	325	622	196,893	171	408	105,092	154	214	91,801
Greene	424	758	255,494	161	344	92,100	263	414	163,394
Hamilton	17	25	6,345	8	16	3,778	9	9	2,567
Herkimer	549	960	278,571	263	564	136,292	286	396	142,279
Jefferson	1,198	2,086	695,976	474	1,094	268,615	724	992	427,361
Lewis	125	211	65,154	71	145	40,099	54	66	25,055
Livingston	850	1,594	457,303	358	848	216,744	492	746	240,559
Madison	437	757	286,793	220	480	131,283	217	277	155,510
Monroe	15,646	32,091	9,159,653	6,592	15,923	4,263,618	9,054	16,168	4,896,035
Montgomery	523	1,222	303,057	328	835	180,450	195	387	122,607
Nassau	7,715	13,931	5,528,208	2,843	6,380	2,255,065	4,872	7,551	3,273,143
Niagara	3,324	6,439	1,654,539	1,412	3,239	757,607	1,912	3,200	896,932
Oneida	4,554	10,766	2,504,946	1,971	5,191	1,148,183	2,583	5,575	1,356,763
Onondaga	7,214	15,891	4,065,392	3,241	7,881	1,912,449	3,973	8,010	2,152,943
Ontario	949	1,567	573,452	390	812	224,158	559	755	349,294
Orange	2,797	5,889	2,171,399	1,197	2,860	984,616	1,600	3,029	1,186,783
Orleans	716	1,262	374,203	292	619	166,122	424	643	208,081
Oswego	1,783	3,728	959,602	863	2,130	484,728	920	1,598	474,874
Otsego	224	325	163,221	105	194	76,043	119	131	87,178
Putnam	137	188	132,460	57	107	31,091	80	81	101,369
Rensselaer	1,712	4,117	1,075,086	982	2,332	570,442	730	1,785	504,644
Rockland	1,459	2,832	902,563	626	1,427	417,781	833	1,405	484,782
St. Lawrence	1,340	2,587	695,159	547	1,264	304,393	793	1,323	390,766
Saratoga	421	624	260,482	221	397	119,336	200	227	141,146
Schenectady	1,860	4,136	1,216,568	974	2,273	608,651	886	1,863	607,917
Schoharie	190	335	115,052	99	223	54,131	91	112	60,921
Schuyler	242	474	149,971	97	240	58,534	145	234	91,437
Seneca	308	582	197,727	125	288	72,678	183	294	125,049
Steuben	997	1,871	497,152	410	953	216,813	587	918	280,339
Suffolk	11,879	20,512	12,373,627	3,775	8,906	4,853,449	8,104	11,606	7,520,178
Sullivan	643	1,307	503,739	355	779	257,263	288	528	246,476
Tioga	378	587	206,584	235	419	131,794	143	168	74,790
Tompkins	856	1,460	479,455	317	671	175,763	539	789	303,692
Ulster	2,222	4,046	1,669,968	893	2,000	722,866	1,329	2,046	947,102
Warren	279	438	198,266	138	285	81,336	141	153	116,930
Washington	331	541	177,676	186	369	100,311	145	172	77,365
Wayne	670	1,107	344,076	334	705	181,763	336	402	162,313
Westchester	6,662	12,915	6,714,472	2,832	6,487	2,730,807	3,830	6,428	3,983,665
Wyoming	198	320	102,842	109	216	60,385	89	104	42,457
Yates	160	256	98,048	82	154	45,765	78	102	52,283

Table 9
 TEMPORARY ASSISTANCE FOR NEEDY FAMILIES-FP BY PROGRAM
 Cases, Recipients, Children, Adults and Expenditures by Local District
 April 2015

Local District	Family Assistance-FP					Safety Net Assistance-FP				
	Cases	Recipients	Children	Adults	Expenditures	Cases	Recipients	Children	Adults	Expenditures
New York State	105,922	245,523	181,648	63,875	\$68,124,348	1,306	3,370	1,967	1,403	\$862,575
New York City	58,293	134,845	99,271	35,574	35,161,267	206	422	284	138	86,974
Rest of State	47,629	110,678	82,377	28,301	32,963,081	1,100	2,948	1,683	1,265	775,601
Albany	1,293	2,984	2,221	763	858,638	16	42	26	16	10,472
Allegany	224	491	371	120	144,325	1	4	2	2	2,016
Broome	1,569	3,394	2,566	828	889,659	49	124	65	59	27,415
Cattaraugus	303	611	486	125	168,332	11	25	13	12	6,727
Cayuga	377	870	629	241	231,558	21	57	34	23	13,290
Chautauqua	1,178	2,749	1,997	752	675,645	12	28	14	14	5,833
Chemung	409	839	704	135	227,312	7	25	17	8	5,786
Chenango	223	458	355	103	113,457	5	14	8	6	2,204
Clinton	424	797	650	147	226,777	10	22	11	11	7,325
Columbia	234	536	393	143	198,385	5	14	8	6	4,380
Cortland	246	544	395	149	137,091	11	37	20	17	6,742
Delaware	159	347	280	67	93,012	1	6	5	1	246
Dutchess	652	1,348	1,118	230	533,755	6	14	7	7	4,851
Erie	6,388	15,594	11,361	4,233	3,585,705	82	221	129	92	46,219
Essex	71	130	107	23	35,996	1	2	1	1	231
Franklin	218	490	351	139	124,172	3	6	3	3	3,298
Fulton	163	340	281	59	103,056	3	5	2	3	2,378
Genesee	163	385	288	97	98,235	8	23	14	9	6,857
Greene	158	331	250	81	88,429	3	13	8	5	3,671
Hamilton	8	16	13	3	3,778	0	0	0	0	0
Herkimer	261	556	422	134	134,044	2	8	6	2	2,248
Jefferson	455	1,043	784	259	257,011	19	51	27	24	11,604
Lewis	68	138	114	24	36,426	3	7	4	3	3,673
Livingston	349	828	570	258	209,045	9	20	10	10	7,699
Madison	207	434	326	108	121,253	13	46	28	18	10,030
Monroe	6,218	14,926	10,798	4,128	4,036,104	374	997	578	419	227,514
Montgomery	323	822	613	209	178,898	5	13	8	5	1,552
Nassau	2,826	6,347	4,767	1,580	2,247,370	17	33	16	17	7,695
Niagara	1,343	3,060	2,228	832	720,971	69	179	96	83	36,636
Oneida	1,934	5,091	3,641	1,450	1,125,408	37	100	56	44	22,775
Onondaga	3,228	7,840	5,750	2,090	1,903,400	13	41	27	14	9,049
Ontario	385	798	611	187	219,530	5	14	7	7	4,628
Orange	1,175	2,802	2,144	658	957,274	22	58	31	27	27,342
Orleans	277	570	428	142	154,938	15	49	31	18	11,184
Oswego	829	2,015	1,439	576	464,680	34	115	71	44	20,048
Otsego	101	180	141	39	71,295	4	14	9	5	4,748
Putnam	57	107	90	17	31,091	0	0	0	0	0
Rensselaer	971	2,302	1,648	654	564,589	11	30	17	13	5,853
Rockland	621	1,415	1,175	240	415,892	5	12	6	6	1,889
St. Lawrence	539	1,249	905	344	297,927	8	15	6	9	6,466
Saratoga	219	393	348	45	117,367	2	4	2	2	1,969
Schenectady	966	2,246	1,702	544	605,155	8	27	19	8	3,496
Schoharie	99	223	172	51	54,131	0	0	0	0	0
Schuyler	97	240	168	72	58,534	0	0	0	0	0
Seneca	122	279	213	66	70,836	3	9	5	4	1,842
Steuben	409	949	712	237	216,373	1	4	3	1	440
Suffolk	3,703	8,707	6,467	2,240	4,735,911	72	199	113	86	117,538
Sullivan	349	763	614	149	252,768	6	16	8	8	4,495
Tioga	229	412	351	61	120,744	6	7	3	4	11,050
Tompkins	304	643	462	181	167,225	13	28	11	17	8,538
Ulster	884	1,981	1,412	569	715,446	9	19	10	9	7,420
Warren	132	268	210	58	78,176	6	17	11	6	3,160
Washington	178	349	292	57	96,557	8	20	12	8	3,754
Wayne	314	650	502	148	168,769	20	55	33	22	12,994
Westchester	2,807	6,431	5,045	1,386	2,715,144	25	56	30	26	15,663
Wyoming	108	213	169	44	59,717	1	3	2	1	668
Yates	82	154	128	26	45,765	0	0	0	0	0

Table 10
SAFETY NET ASSISTANCE-FNP AND FAMILY ASSISTANCE-FNP
Cases, Recipients, Children, Adults and Expenditures by Local District
April 2015

Local District	Safety Net Assistance-FNP and Family Assistance-FNP				
	Cases	Recipients	Children	Adults	Expenditures
New York State	195,065	326,615	112,870	213,745	\$121,981,174
New York City	129,361	213,772	70,147	143,625	80,006,969
Rest of State	65,704	112,843	42,723	70,120	41,974,205
Albany	1,364	2,791	1,291	1,500	858,429
Allegany	265	402	130	272	126,299
Broome	2,203	3,645	1,341	2,304	1,097,606
Cattaraugus	362	438	84	354	191,086
Cayuga	477	689	193	496	271,106
Chautauqua	1,544	2,895	1,189	1,706	808,212
Chemung	380	513	161	352	194,685
Chenango	246	334	80	254	104,095
Clinton	448	580	122	458	292,823
Columbia	298	429	116	313	230,004
Cortland	385	474	80	394	198,582
Delaware	126	159	30	129	55,173
Dutchess	646	998	385	613	510,313
Erie	8,449	16,843	7,419	9,424	4,172,334
Essex	49	52	7	45	29,443
Franklin	351	533	160	373	187,252
Fulton	151	167	26	141	77,983
Genesee	154	214	59	155	91,801
Greene	263	414	137	277	163,394
Hamilton	9	9	0	9	2,567
Herkimer	286	396	101	295	142,279
Jefferson	724	992	222	770	427,361
Lewis	54	66	15	51	25,055
Livingston	492	746	214	532	240,559
Madison	217	277	70	207	155,510
Monroe	9,054	16,168	6,668	9,500	4,896,035
Montgomery	195	387	166	221	122,607
Nassau	4,872	7,551	2,423	5,128	3,273,143
Niagara	1,912	3,200	1,171	2,029	896,932
Oneida	2,583	5,575	2,552	3,023	1,356,763
Onondaga	3,973	8,010	3,641	4,369	2,152,943
Ontario	559	755	177	578	349,294
Orange	1,600	3,029	1,319	1,710	1,186,783
Orleans	424	643	210	433	208,081
Oswego	920	1,598	570	1,028	474,874
Otsego	119	131	11	120	87,178
Putnam	80	81	4	77	101,369
Rensselaer	730	1,785	945	840	504,644
Rockland	833	1,405	507	898	484,782
St. Lawrence	793	1,323	433	890	390,766
Saratoga	200	227	42	185	141,146
Schenectady	886	1,863	915	948	607,917
Schoharie	91	112	19	93	60,921
Schuyler	145	234	73	161	91,437
Seneca	183	294	101	193	125,049
Steuben	587	918	305	613	280,339
Suffolk	8,104	11,606	3,142	8,464	7,520,178
Sullivan	288	528	233	295	246,476
Tioga	143	168	32	136	74,790
Tompkins	539	789	224	565	303,692
Ulster	1,329	2,046	615	1,431	947,102
Warren	141	153	14	139	116,930
Washington	145	172	32	140	77,365
Wayne	336	402	67	335	162,313
Westchester	3,830	6,428	2,448	3,980	3,983,665
Wyoming	89	104	16	88	42,457
Yates	78	102	16	86	52,283

Table 11
SAFETY NET ASSISTANCE-FNP BY MAINTENANCE OF EFFORT STATUS
 Maintenance of Effort (MOE) vs. Non-Maintenance of Effort (Non-MOE)
 Cases, Recipients, Children, Adults and Expenditures by Local District
 April 2015

Local District	Maintenance of Effort (MOE)					Non-Maintenance of Effort (Non-MOE)*				
	Cases	Recipients	Children	Adults	Expenditures	Cases	Recipients	Children	Adults	Expenditures
New York State	37,164	121,779	81,490	40,289	\$26,905,774	157,901	204,836	31,380	173,456	\$95,075,400
New York City	25,759	81,603	53,181	28,422	16,897,825	103,602	132,169	16,966	115,203	63,109,144
Rest of State	11,405	40,176	28,309	11,867	10,007,949	54,299	72,667	14,414	58,253	31,966,256
Albany	319	1,172	845	327	245,860	1,045	1,619	446	1,173	612,569
Allegany	35	112	76	36	21,176	230	290	54	236	105,123
Broome	368	1,287	891	396	231,525	1,835	2,358	450	1,908	866,081
Cattaraugus	17	58	41	17	10,461	345	380	43	337	180,625
Cayuga	45	162	113	49	33,270	432	527	80	447	237,836
Chautauqua	363	1,224	823	401	261,966	1,181	1,671	366	1,305	546,246
Chemung	26	101	74	27	15,123	354	412	87	325	179,562
Chenango	13	43	29	14	5,591	233	291	51	240	98,504
Clinton	41	127	84	43	27,772	407	453	38	415	265,051
Columbia	26	93	66	27	20,332	272	336	50	286	209,672
Cortland	21	64	42	22	11,948	364	410	38	372	186,634
Delaware	5	22	18	4	2,516	121	137	12	125	52,657
Dutchess	105	382	274	108	109,667	541	616	111	505	400,646
Erie	1,716	6,233	4,470	1,763	1,232,160	6,733	10,610	2,949	7,661	2,940,174
Essex	1	2	2	0	768	48	50	5	45	28,675
Franklin	38	116	79	37	20,277	313	417	81	336	166,975
Fulton	6	18	13	5	3,836	145	149	13	136	74,147
Genesee	19	66	45	21	12,610	135	148	14	134	79,191
Greene	37	125	86	39	29,275	226	289	51	238	134,119
Hamilton	0	0	0	0	0	9	9	0	9	2,567
Herkimer	25	89	62	27	13,384	261	307	39	268	128,895
Jefferson	40	138	97	41	28,457	684	854	125	729	398,904
Lewis	3	8	5	3	1,015	51	58	10	48	24,040
Livingston	54	173	113	60	39,486	438	573	101	472	201,073
Madison	26	76	51	25	17,903	191	201	19	182	137,607
Monroe	2,190	7,641	5,375	2,266	1,644,652	6,864	8,527	1,293	7,234	3,251,383
Montgomery	40	140	99	41	23,045	155	247	67	180	99,562
Nassau	848	2,680	1,818	862	855,202	4,024	4,871	605	4,266	2,417,941
Niagara	319	1,114	774	340	206,409	1,593	2,086	397	1,689	690,523
Oneida	460	1,801	1,315	486	308,596	2,123	3,774	1,237	2,537	1,048,167
Onondaga	717	2,738	2,004	734	472,090	3,256	5,272	1,637	3,635	1,680,853
Ontario	45	163	113	50	31,891	514	592	64	528	317,403
Orange	401	1,412	997	415	436,231	1,199	1,617	322	1,295	750,552
Orleans	56	183	122	61	35,729	368	460	88	372	172,352
Oswego	101	384	272	112	75,603	819	1,214	298	916	399,271
Otsego	0	0	0	0	0	119	131	11	120	87,178
Putnam	1	2	1	1	291	79	79	3	76	101,078
Rensselaer	232	846	608	238	153,564	498	939	337	602	351,080
Rockland	80	274	197	77	50,379	753	1,131	310	821	434,403
St. Lawrence	87	282	195	87	57,752	706	1,041	238	803	333,014
Saratoga	0	0	0	0	0	200	227	42	185	141,146
Schenectady	228	894	658	236	187,488	658	969	257	712	420,429
Schoharie	2	6	4	2	936	89	106	15	91	59,985
Schuyler	14	46	30	16	6,192	131	188	43	145	85,245
Seneca	22	74	51	23	14,153	161	220	50	170	110,896
Steuben	78	283	195	88	50,549	509	635	110	525	229,790
Suffolk	834	3,107	2,208	899	1,663,121	7,270	8,499	934	7,565	5,857,057
Sullivan	55	190	133	57	49,076	233	338	100	238	197,400
Tioga	9	29	23	6	5,013	134	139	9	130	69,777
Tompkins	53	190	132	58	34,466	486	599	92	507	269,226
Ulster	163	523	361	162	142,472	1,166	1,523	254	1,269	804,630
Warren	3	7	5	2	6,843	138	146	9	137	110,087
Washington	4	13	9	4	2,058	141	159	23	136	75,307
Wayne	20	61	41	20	17,874	316	341	26	315	144,439
Westchester	990	3,180	2,153	1,027	1,075,916	2,840	3,248	295	2,953	2,907,749
Wyoming	3	17	13	4	2,957	86	87	3	84	39,500
Yates	1	5	4	1	1,023	77	97	12	85	51,260

* The Non-MOE category includes otherwise Temporary Assistance for Needy Families eligible or otherwise Safety Net Assistance MOE eligible non-disabled two-parent cases.

Table 12
SAFETY NET ASSISTANCE-FNP-CASH TOTAL*
Cases, Recipients, Children, Adults and Expenditures by Local District
April 2015

Local District	Safety Net Assistance-FNP Cash Total				
	Cases	Recipients	Children	Adults	Expenditures
New York State	See Note	See Note	See Note	See Note	See Note
New York City	See Note	See Note	See Note	See Note	See Note
Rest of State	38,245	54,542	13,001	41,541	\$22,237,379
Albany	688	1,174	386	788	405,820
Allegany	147	206	49	157	64,726
Broome	1,204	1,566	289	1,277	532,921
Cattaraugus	252	298	45	253	135,218
Cayuga	330	415	72	343	167,610
Chautauqua	803	1,172	281	891	364,732
Chemung	292	344	82	262	141,439
Chenango	200	262	55	207	84,615
Clinton	327	399	62	337	212,822
Columbia	189	243	40	203	130,156
Cortland	234	265	25	240	110,921
Delaware	105	129	21	108	44,329
Dutchess	393	531	158	373	270,090
Erie	4,872	8,361	2,679	5,682	2,170,053
Essex	40	41	5	36	23,481
Franklin	234	309	58	251	122,301
Fulton	114	116	10	106	49,346
Genesee	88	98	10	88	36,969
Greene	168	233	51	182	92,874
Hamilton	8	8	0	8	2,259
Herkimer	169	222	44	178	79,948
Jefferson	488	643	109	534	280,400
Lewis	38	45	5	40	16,856
Livingston	383	510	97	413	176,921
Madison	144	182	45	137	107,071
Monroe	4,315	6,034	1,409	4,625	2,071,842
Montgomery	104	188	62	126	64,425
Nassau	2,693	3,275	408	2,867	1,679,107
Niagara	1,008	1,377	293	1,084	417,075
Oneida	1,699	3,185	1,128	2,057	831,234
Onondaga	2,861	4,902	1,708	3,194	1,504,947
Ontario	379	459	61	398	226,695
Orange	790	1,089	238	851	471,611
Orleans	239	341	99	242	115,380
Oswego	628	970	261	709	299,342
Otsego	95	106	8	98	71,078
Putnam	47	48	4	44	52,193
Rensselaer	383	698	240	458	256,709
Rockland	395	558	128	430	203,432
St. Lawrence	492	748	180	568	208,991
Saratoga	144	171	41	130	82,245
Schenectady	444	644	172	472	278,978
Schoharie	70	84	13	71	43,962
Schuyler	100	150	39	111	62,780
Seneca	119	196	66	130	77,049
Steuben	390	488	86	402	164,017
Suffolk	5,619	6,889	1,009	5,880	4,539,101
Sullivan	139	229	91	138	91,549
Tioga	106	113	10	103	42,287
Tompkins	318	416	84	332	182,224
Ulster	794	1,084	208	876	578,529
Warren	106	114	9	105	81,134
Washington	106	120	22	98	46,223
Wayne	214	242	21	221	96,288
Westchester	1,413	1,702	207	1,495	1,504,617
Wyoming	66	71	6	65	30,760
Yates	59	79	12	67	37,697

Note: A breakout of Safety Net Assistance-FNP-Cash and Safety Net Assistance-FNP-Non-Cash data is not available for New York City.

* May include otherwise Temporary Assistance for Needy Families eligible or otherwise Safety Net Assistance MOE eligible non-disabled two-parent cases.

Table 13
SAFETY NET ASSISTANCE-FNP-CASH BY MAINTENANCE OF EFFORT STATUS
 Maintenance of Effort (MOE) vs. Non-Maintenance of Effort (Non-MOE)
 Cases, Recipients, Children, Adults and Expenditures by Local District
 April 2015

Local District	Maintenance of Effort (MOE)					Non-Maintenance of Effort (Non-MOE)*				
	Cases	Recipients	Children	Adults	Expenditures	Cases	Recipients	Children	Adults	Expenditures
New York State	See Note	See Note	See Note	See Note	See Note	See Note	See Note	See Note	See Note	See Note
New York City	See Note	See Note	See Note	See Note	See Note	See Note	See Note	See Note	See Note	See Note
Rest of State	1,266	4,258	2,863	1,395	\$1,132,077	36,979	50,284	10,138	40,146	\$21,105,302
Albany	21	70	50	20	18,487	667	1,104	336	768	387,333
Allegany	1	5	3	2	551	146	201	46	155	64,175
Broome	23	72	43	29	14,958	1,181	1,494	246	1,248	517,963
Cattaraugus	9	27	18	9	5,166	243	271	27	244	130,052
Cayuga	3	13	10	3	1,852	327	402	62	340	165,758
Chautauqua	20	63	38	25	12,216	783	1,109	243	866	352,516
Chemung	2	8	6	2	1,472	290	336	76	260	139,967
Chenango	2	8	6	2	1,636	198	254	49	205	82,979
Clinton	17	48	30	18	10,520	310	351	32	319	202,302
Columbia	1	3	2	1	69	188	240	38	202	130,087
Cortland	1	3	2	1	670	233	262	23	239	110,251
Delaware	2	10	9	1	672	103	119	12	107	43,657
Dutchess	37	132	92	40	33,850	356	399	66	333	236,240
Erie	206	687	462	225	143,267	4,666	7,674	2,217	5,457	2,026,786
Essex	0	0	0	0	0	40	41	5	36	23,481
Franklin	1	3	2	1	610	233	306	56	250	121,691
Fulton	1	2	1	1	484	113	114	9	105	48,862
Genesee	2	4	2	2	389	86	94	8	86	36,580
Greene	4	18	13	5	4,964	164	215	38	177	87,910
Hamilton	0	0	0	0	0	8	8	0	8	2,259
Herkimer	5	17	12	5	2,267	164	205	32	173	77,681
Jefferson	9	26	15	11	5,590	479	617	94	523	274,810
Lewis	0	0	0	0	0	38	45	5	40	16,856
Livingston	12	35	21	14	8,695	371	475	76	399	168,226
Madison	15	43	27	16	9,139	129	139	18	121	97,932
Monroe	209	691	468	223	157,552	4,106	5,343	941	4,402	1,914,290
Montgomery	5	18	13	5	2,282	99	170	49	121	62,143
Nassau	40	99	60	39	38,593	2,653	3,176	348	2,828	1,640,514
Niagara	35	118	74	44	20,609	973	1,259	219	1,040	396,466
Oneida	68	258	181	77	46,193	1,631	2,927	947	1,980	785,041
Onondaga	165	637	456	181	120,287	2,696	4,265	1,252	3,013	1,384,660
Ontario	5	16	11	5	3,246	374	443	50	393	223,449
Orange	41	120	74	46	36,703	749	969	164	805	434,908
Orleans	10	30	18	12	6,491	229	311	81	230	108,889
Oswego	15	48	30	18	9,277	613	922	231	691	290,065
Otsego	0	0	0	0	0	95	106	8	98	71,078
Putnam	1	2	1	1	291	46	46	3	43	51,902
Rensselaer	2	8	6	2	1,069	381	690	234	456	255,640
Rockland	8	25	17	8	3,067	387	533	111	422	200,365
St. Lawrence	12	39	26	13	6,295	480	709	154	555	202,696
Saratoga	0	0	0	0	0	144	171	41	130	82,245
Schenectady	7	20	13	7	4,907	437	624	159	465	274,071
Schoharie	0	0	0	0	0	70	84	13	71	43,962
Schuyler	2	8	6	2	361	98	142	33	109	62,419
Seneca	8	30	21	9	4,785	111	166	45	121	72,264
Steuben	6	22	16	6	3,635	384	466	70	396	160,382
Suffolk	149	546	369	177	320,109	5,470	6,343	640	5,703	4,218,992
Sullivan	4	15	10	5	4,650	135	214	81	133	86,899
Tioga	2	4	2	2	806	104	109	8	101	41,481
Tompkins	2	7	5	2	1,125	316	409	79	330	181,099
Ulster	10	28	17	11	8,152	784	1,056	191	865	570,377
Warren	0	0	0	0	0	106	114	9	105	81,134
Washington	2	8	6	2	1,019	104	112	16	96	45,204
Wayne	5	14	8	6	2,257	209	228	13	215	94,031
Westchester	58	144	86	58	50,490	1,355	1,558	121	1,437	1,454,127
Wyoming	1	6	5	1	302	65	65	1	64	30,458
Yates	0	0	0	0	0	59	79	12	67	37,697

Note: A breakout of Safety Net Assistance-FNP-Cash and Safety Net Assistance-FNP-Non-Cash data is not available for New York City.

* The Non-MOE category includes otherwise Temporary Assistance for Needy Families eligible or otherwise Safety Net Assistance MOE eligible non-disabled two-parent cases.

Table 14
SAFETY NET ASSISTANCE-FNP-NON-CASH TOTAL*
Cases, Recipients, Children, Adults and Expenditures by Local District
April 2015

Local District	Safety Net Assistance-FNP-Non-Cash Total				
	Cases	Recipients	Children	Adults	Expenditures
New York State	See Note	See Note	See Note	See Note	See Note
New York City	See Note	See Note	See Note	See Note	See Note
Rest of State	27,459	58,301	29,722	28,579	\$19,736,826
Albany	676	1,617	905	712	452,609
Allegany	118	196	81	115	61,573
Broome	999	2,079	1,052	1,027	564,685
Cattaraugus	110	140	39	101	55,868
Cayuga	147	274	121	153	103,496
Chautauqua	741	1,723	908	815	443,480
Chemung	88	169	79	90	53,246
Chenango	46	72	25	47	19,480
Clinton	121	181	60	121	80,001
Columbia	109	186	76	110	99,848
Cortland	151	209	55	154	87,661
Delaware	21	30	9	21	10,844
Dutchess	253	467	227	240	240,223
Erie	3,577	8,482	4,740	3,742	2,002,281
Essex	9	11	2	9	5,962
Franklin	117	224	102	122	64,951
Fulton	37	51	16	35	28,637
Genesee	66	116	49	67	54,832
Greene	95	181	86	95	70,520
Hamilton	1	1	0	1	308
Herkimer	117	174	57	117	62,331
Jefferson	236	349	113	236	146,961
Lewis	16	21	10	11	8,199
Livingston	109	236	117	119	63,638
Madison	73	95	25	70	48,439
Monroe	4,739	10,134	5,259	4,875	2,824,193
Montgomery	91	199	104	95	58,182
Nassau	2,179	4,276	2,015	2,261	1,594,036
Niagara	904	1,823	878	945	479,857
Oneida	884	2,390	1,424	966	525,529
Onondaga	1,112	3,108	1,933	1,175	647,996
Ontario	180	296	116	180	122,599
Orange	810	1,940	1,081	859	715,172
Orleans	185	302	111	191	92,701
Oswego	292	628	309	319	175,532
Otsego	24	25	3	22	16,100
Putnam	33	33	0	33	49,176
Rensselaer	347	1,087	705	382	247,935
Rockland	438	847	379	468	281,350
St. Lawrence	301	575	253	322	181,775
Saratoga	56	56	1	55	58,901
Schenectady	442	1,219	743	476	328,939
Schoharie	21	28	6	22	16,959
Schuyler	45	84	34	50	28,657
Seneca	64	98	35	63	48,000
Steuben	197	430	219	211	116,322
Suffolk	2,485	4,717	2,133	2,584	2,981,077
Sullivan	149	299	142	157	154,927
Tioga	37	55	22	33	32,503
Tompkins	221	373	140	233	121,468
Ulster	535	962	407	555	368,573
Warren	35	39	5	34	35,796
Washington	39	52	10	42	31,142
Wayne	122	160	46	114	66,025
Westchester	2,417	4,726	2,241	2,485	2,479,048
Wyoming	23	33	10	23	11,697
Yates	19	23	4	19	14,586

Note: A breakout of Safety Net Assistance-FNP-Cash and Safety Net Assistance-FNP-Non-Cash data is not available for New York City.

* May include otherwise Temporary Assistance for Needy Families eligible or otherwise Safety Net Assistance MOE eligible non-disabled two-parent cases.

Table 15
SAFETY NET ASSISTANCE-FNP-NON-CASH BY MAINTENANCE OF EFFORT STATUS
 Maintenance of Effort (MOE) vs. Non-Maintenance of Effort (Non-MOE)
 Cases, Recipients, Children, Adults and Expenditures by Local District
 April 2015

Local District	Maintenance of Effort (MOE)					Non-Maintenance of Effort (Non-MOE)*				
	Cases	Recipients	Children	Adults	Expenditures	Cases	Recipients	Children	Adults	Expenditures
New York State	See Note	See Note	See Note	See Note	See Note	See Note	See Note	See Note	See Note	See Note
New York City	See Note	See Note	See Note	See Note	See Note	See Note	See Note	See Note	See Note	See Note
Rest of State	10,139	35,918	25,446	10,472	\$8,875,872	17,320	22,383	4,276	18,107	\$10,860,954
Albany	298	1,102	795	307	227,373	378	515	110	405	225,236
Allegany	34	107	73	34	20,625	84	89	8	81	40,948
Broome	345	1,215	848	367	216,567	654	864	204	660	348,118
Cattaraugus	8	31	23	8	5,295	102	109	16	93	50,573
Cayuga	42	149	103	46	31,418	105	125	18	107	72,078
Chautauqua	343	1,161	785	376	249,750	398	562	123	439	193,730
Chemung	24	93	68	25	13,651	64	76	11	65	39,595
Chenango	11	35	23	12	3,955	35	37	2	35	15,525
Clinton	24	79	54	25	17,252	97	102	6	96	62,749
Columbia	25	90	64	26	20,263	84	96	12	84	79,585
Cortland	20	61	40	21	11,278	131	148	15	133	76,383
Delaware	3	12	9	3	1,844	18	18	0	18	9,000
Dutchess	68	250	182	68	75,817	185	217	45	172	164,406
Erie	1,510	5,546	4,008	1,538	1,088,893	2,067	2,936	732	2,204	913,388
Essex	1	2	2	0	768	8	9	0	9	5,194
Franklin	37	113	77	36	19,667	80	111	25	86	45,284
Fulton	5	16	12	4	3,352	32	35	4	31	25,285
Genesee	17	62	43	19	12,221	49	54	6	48	42,611
Greene	33	107	73	34	24,311	62	74	13	61	46,209
Hamilton	0	0	0	0	0	1	1	0	1	308
Herkimer	20	72	50	22	11,117	97	102	7	95	51,214
Jefferson	31	112	82	30	22,867	205	237	31	206	124,094
Lewis	3	8	5	3	1,015	13	13	5	8	7,184
Livingston	42	138	92	46	30,791	67	98	25	73	32,847
Madison	11	33	24	9	8,764	62	62	1	61	39,675
Monroe	1,981	6,950	4,907	2,043	1,487,100	2,758	3,184	352	2,832	1,337,093
Montgomery	35	122	86	36	20,763	56	77	18	59	37,419
Nassau	808	2,581	1,758	823	816,609	1,371	1,695	257	1,438	777,427
Niagara	284	996	700	296	185,800	620	827	178	649	294,057
Oneida	392	1,543	1,134	409	262,403	492	847	290	557	263,126
Onondaga	552	2,101	1,548	553	351,803	560	1,007	385	622	296,193
Ontario	40	147	102	45	28,645	140	149	14	135	93,954
Orange	360	1,292	923	369	399,528	450	648	158	490	315,644
Orleans	46	153	104	49	29,238	139	149	7	142	63,463
Oswego	86	336	242	94	66,326	206	292	67	225	109,206
Otsego	0	0	0	0	0	24	25	3	22	16,100
Putnam	0	0	0	0	0	33	33	0	33	49,176
Rensselaer	230	838	602	236	152,495	117	249	103	146	95,440
Rockland	72	249	180	69	47,312	366	598	199	399	234,038
St. Lawrence	75	243	169	74	51,457	226	332	84	248	130,318
Saratoga	0	0	0	0	0	56	56	1	55	58,901
Schenectady	221	874	645	229	182,581	221	345	98	247	146,358
Schoharie	2	6	4	2	936	19	22	2	20	16,023
Schuyler	12	38	24	14	5,831	33	46	10	36	22,826
Seneca	14	44	30	14	9,368	50	54	5	49	38,632
Steuben	72	261	179	82	46,914	125	169	40	129	69,408
Suffolk	685	2,561	1,839	722	1,343,012	1,800	2,156	294	1,862	1,638,065
Sullivan	51	175	123	52	44,426	98	124	19	105	110,501
Tioga	7	25	21	4	4,207	30	30	1	29	28,296
Tompkins	51	183	127	56	33,341	170	190	13	177	88,127
Ulster	153	495	344	151	134,320	382	467	63	404	234,253
Warren	3	7	5	2	6,843	32	32	0	32	28,953
Washington	2	5	3	2	1,039	37	47	7	40	30,103
Wayne	15	47	33	14	15,617	107	113	13	100	50,408
Westchester	932	3,036	2,067	969	1,025,426	1,485	1,690	174	1,516	1,453,622
Wyoming	2	11	8	3	2,655	21	22	2	20	9,042
Yates	1	5	4	1	1,023	18	18	0	18	13,563

Note: A breakout of Safety Net Assistance-FNP-Cash and Safety Net Assistance-FNP-Non-Cash data is not available for New York City.

* The Non-MOE category includes otherwise Temporary Assistance for Needy Families eligible or otherwise Safety Net Assistance MOE eligible non-disabled two-parent cases.

Table 16
SUPPLEMENTAL NUTRITION ASSISTANCE PROGRAM
Households, Persons and Value of Supplemental Nutrition Assistance Program Benefits by Local District
April 2015

Local District	Total			Temporary Assistance			Non-Temporary Assistance		
	Households	Persons	SNAP Benefits	Households	Persons	SNAP Benefits	Households	Persons	SNAP Benefits
New York State	1,667,152	3,039,251	\$421,193,289	676,609	1,025,098	\$155,608,773	990,543	2,014,153	\$265,584,516
New York City	957,565	1,709,929	247,743,033	439,085	666,485	102,398,354	518,480	1,043,444	145,344,679
Rest of State	709,587	1,329,322	173,450,256	237,524	358,613	53,210,419	472,063	970,709	120,239,837
Albany	19,481	36,531	4,673,964	6,365	9,766	1,433,766	13,116	26,765	3,240,198
Allegany	3,429	6,435	773,868	1,229	1,708	253,433	2,200	4,727	520,435
Broome	17,157	31,822	4,115,160	6,840	10,678	1,633,580	10,317	21,144	2,481,580
Cattaraugus	6,624	12,932	1,545,083	1,877	2,384	361,425	4,747	10,548	1,183,658
Cayuga	5,693	11,001	1,373,093	1,589	2,383	357,004	4,104	8,618	1,016,089
Chautauqua	14,272	27,419	3,551,091	4,630	7,730	1,132,767	9,642	19,689	2,418,324
Chemung	8,150	15,716	2,062,112	2,299	2,981	453,524	5,851	12,735	1,608,588
Chenango	4,000	7,848	950,421	1,169	1,510	228,583	2,831	6,338	721,838
Clinton	6,863	11,758	1,464,398	2,422	3,115	472,262	4,441	8,643	992,136
Columbia	3,780	6,497	830,819	1,354	1,837	275,275	2,426	4,660	555,544
Cortland	3,821	7,020	867,886	1,153	1,604	246,436	2,668	5,416	621,450
Delaware	3,334	6,642	801,856	908	1,131	166,383	2,426	5,511	635,473
Dutchess	13,515	24,095	3,199,215	3,831	4,898	739,477	9,684	19,197	2,459,738
Erie	84,977	158,163	20,769,028	29,594	48,302	7,206,075	55,383	109,861	13,562,953
Essex	2,139	3,805	465,596	726	812	124,132	1,413	2,993	341,464
Franklin	4,222	7,742	995,008	1,549	2,071	318,247	2,673	5,671	676,761
Fulton	5,045	9,387	1,172,606	1,422	1,671	269,769	3,623	7,716	902,837
Genesee	3,303	6,117	750,239	931	1,261	195,614	2,372	4,856	554,625
Greene	3,333	5,849	767,253	1,113	1,523	229,434	2,220	4,326	537,819
Hamilton	261	469	55,278	62	72	11,254	199	397	44,024
Herkimer	5,613	10,684	1,308,982	1,353	1,779	276,846	4,260	8,905	1,032,136
Jefferson	8,419	15,828	1,984,712	2,491	3,470	525,682	5,928	12,358	1,459,030
Lewis	1,870	3,667	412,340	442	549	79,332	1,428	3,118	333,008
Livingston	4,032	7,490	953,419	1,427	2,262	345,076	2,605	5,228	608,343
Madison	4,673	9,214	1,137,883	1,087	1,450	217,813	3,586	7,764	920,070
Monroe	65,996	121,716	16,325,938	28,021	46,173	6,821,802	37,975	75,543	9,504,136
Montgomery	4,680	9,630	1,218,008	1,469	2,306	336,731	3,211	7,324	881,277
Nassau	41,106	66,190	8,731,154	16,973	23,584	3,521,149	24,133	42,606	5,210,005
Niagara	18,278	32,874	4,261,072	6,096	9,231	1,395,734	12,182	23,643	2,865,338
Oneida	20,361	41,133	5,220,646	8,164	14,672	2,101,746	12,197	26,461	3,118,900
Onondaga	38,829	74,349	9,541,564	13,496	23,200	3,311,488	25,333	51,149	6,230,076
Ontario	5,788	10,461	1,322,024	1,774	2,452	385,333	4,014	8,009	936,691
Orange	20,330	47,566	6,292,011	6,155	9,339	1,358,324	14,175	38,227	4,933,687
Orleans	3,258	6,240	750,661	1,099	1,665	251,724	2,159	4,575	498,937
Oswego	9,762	20,249	2,556,033	3,081	5,173	761,044	6,681	15,076	1,794,989
Otsego	3,409	6,414	773,065	913	1,033	165,631	2,496	5,381	607,434
Putnam	1,724	2,686	354,439	550	597	89,167	1,174	2,089	265,272
Rensselaer	9,109	18,210	2,247,918	3,439	6,120	838,338	5,670	12,090	1,409,580
Rockland	17,222	47,502	6,194,960	4,113	5,647	860,734	13,109	41,855	5,334,226
St. Lawrence	8,586	16,802	2,047,082	3,101	4,476	659,189	5,485	12,326	1,387,893
Saratoga	8,988	15,876	1,943,027	1,958	2,176	347,925	7,030	13,700	1,595,102
Schenectady	13,375	25,135	3,366,062	4,680	7,206	1,065,845	8,695	17,929	2,300,217
Schoharie	2,052	3,819	478,264	536	678	107,459	1,516	3,141	370,805
Schuyler	1,310	2,576	301,711	375	601	89,944	935	1,975	211,767
Seneca	1,927	3,633	456,306	631	894	131,275	1,296	2,739	325,031
Steuben	6,251	12,519	1,467,166	2,091	3,061	440,763	4,160	9,458	1,026,403
Suffolk	76,902	131,922	18,344,346	22,135	30,906	4,651,856	54,767	101,016	13,692,490
Sullivan	6,275	12,305	1,655,078	1,925	2,642	388,413	4,350	9,663	1,266,665
Tioga	3,206	6,548	761,659	793	1,048	153,095	2,413	5,500	608,564
Tompkins	5,148	8,982	1,163,034	1,584	2,204	338,937	3,564	6,778	824,097
Ulster	12,304	21,737	2,893,920	4,364	6,304	970,263	7,940	15,433	1,923,657
Warren	4,157	7,558	920,521	1,106	1,316	206,927	3,051	6,242	713,594
Washington	4,119	7,830	960,417	1,071	1,347	204,456	3,048	6,483	755,961
Wayne	5,726	10,742	1,289,106	1,744	2,229	348,975	3,982	8,513	940,131
Westchester	48,165	85,818	11,926,253	15,340	22,279	3,183,757	32,825	63,539	8,742,496
Wyoming	1,778	3,371	385,066	491	617	93,678	1,287	2,754	291,388
Yates	1,460	2,798	320,435	393	490	75,528	1,067	2,308	244,907

Note: Supplemental Nutrition Assistance Program households containing only Supplemental Security Income recipients or a mix of Temporary Assistance and Supplemental Security Income recipients are counted as Temporary Assistance.

Table 17
SUPPLEMENTAL SECURITY INCOME
 Recipients, Total Program Expenditures and Federal and State Shares, by Local District
 April 2015

Local District	Recipients	Expenditures		
		Total	Federal	State
New York State*	710,674	\$418,607,937	\$366,199,492	\$52,408,445
New York City	428,705	255,617,545	225,535,859	30,081,686
Rest of State	277,154	160,843,482	139,186,073	21,657,409
Albany	7,490	4,363,281	3,842,906	520,375
Allegany	1,582	879,281	761,488	117,793
Broome	7,360	4,358,789	3,892,129	466,660
Cattaraugus	2,659	1,458,968	1,266,244	192,724
Cayuga	1,978	1,135,189	970,870	164,319
Chautauqua	5,110	2,918,897	2,544,500	374,397
Chemung	3,602	2,018,973	1,767,601	251,372
Chenango	1,643	911,750	807,077	104,673
Clinton	3,169	1,804,668	1,574,969	229,699
Columbia	1,716	1,010,355	817,792	192,563
Cortland	1,305	725,141	626,933	98,208
Delaware	1,331	738,599	635,295	103,304
Dutchess	6,025	3,531,279	2,885,549	645,730
Erie	30,607	18,284,969	16,074,278	2,210,691
Essex	1,107	665,169	532,877	132,292
Franklin	1,850	1,091,664	933,600	158,064
Fulton	2,287	1,263,892	1,058,680	205,212
Genesee	1,306	755,100	636,113	118,987
Greene	1,531	860,547	749,519	111,028
Hamilton	59	35,581	31,740	3,841
Herkimer	1,816	990,753	854,322	136,431
Jefferson	3,033	1,705,880	1,470,806	235,074
Lewis	654	361,355	319,203	42,152
Livingston	1,299	732,891	655,854	77,037
Madison	1,486	810,393	704,135	106,258
Monroe	27,659	17,084,644	15,153,464	1,931,180
Montgomery	2,077	1,196,575	1,040,641	155,934
Nassau	19,139	10,607,367	8,944,122	1,663,245
Niagara	6,399	3,745,501	3,267,620	477,881
Oneida	8,878	5,185,368	4,578,424	606,944
Onondaga	15,464	9,436,042	8,437,347	998,695
Ontario	2,059	1,128,358	989,500	138,858
Orange	7,457	4,351,869	3,770,657	581,212
Orleans	1,047	633,813	563,759	70,054
Oswego	3,604	2,183,656	1,984,783	198,873
Otsego	1,548	905,156	761,606	143,550
Putnam	921	491,500	400,363	91,137
Rensselaer	4,856	2,896,908	2,492,632	404,276
Rockland	5,627	3,187,845	2,443,991	743,854
St. Lawrence	4,064	2,352,296	2,083,589	268,707
Saratoga	3,206	1,741,850	1,515,211	226,639
Schenectady	5,955	3,578,603	3,172,814	405,789
Schoharie	775	452,024	375,978	76,046
Schuyler	474	274,404	225,433	48,971
Seneca	850	502,183	439,283	62,900
Steuben	3,238	1,790,145	1,583,754	206,391
Suffolk	23,255	13,224,866	11,066,386	2,158,480
Sullivan	2,840	1,617,932	1,319,736	298,196
Tioga	1,270	699,647	619,465	80,182
Tompkins	1,718	975,506	830,515	144,991
Ulster	4,540	2,552,872	2,167,006	385,866
Warren	1,768	962,412	829,119	133,293
Washington	1,722	933,345	806,808	126,537
Wayne	2,339	1,369,587	1,222,692	146,895
Westchester	19,107	10,640,162	9,052,491	1,587,671
Wyoming	722	408,476	361,593	46,883
Yates	571	319,206	270,811	48,395
Mental Hygiene	4,815	2,146,910	1,477,560	669,350

* Only New York State includes Mental Hygiene

Table 18
SUPPLEMENTAL SECURITY INCOME
 Recipients by Living Arrangement and Location
 April 2015

Living Arrangement	New York State	New York City	Rest of State	Mental Hygiene
Living Alone	343,342	225,117	118,225	0
Living With Others	280,089	161,177	118,900	12
Living in Household of Another	28,410	17,048	11,360	2
Congregate Care Level 1	2,556	284	553	1,719
Congregate Care Level 2	26,261	9,555	15,872	834
Congregate Care Level 3	12,522	6,305	6,217	0
Title XIX Institution	12,959	7,853	4,450	656
Other*	4,535	1,494	1,577	1,464
Total	710,674	428,833	277,154	4,687

Table 19
SUPPLEMENTAL SECURITY INCOME
 Recipients by Living Arrangement and Category of Assistance
 April 2015

Living Arrangement	Total	Category of Assistance		
		Aged	Blind	Disabled
Living Alone	343,342	98,625	1,292	243,425
Living With Others	280,089	23,976	1,201	254,912
Living in Household of Another	28,410	7,964	202	20,244
Congregate Care Level 1	2,556	284	12	2,260
Congregate Care Level 2	26,261	1,581	93	24,587
Congregate Care Level 3	12,522	4,964	31	7,527
Title XIX Institution & Other*	17,494	2,557	89	14,848
Total	710,674	139,951	2,920	567,803

* "Other" includes recipients either a) residing in a private medical facility and Medicaid is paying for less than 50% of the cost of care, b) residing in certain publicly operated residential facilities serving 16 or fewer residents, or c) residing in a public emergency shelter for six calendar months during a nine month period. Such cases receive no state Supplemental Security Income supplement.

Table 20
CHILD SUPPORT COLLECTIONS (IV-D)
April 2015

Local District	Total	Current Assistance	Former Assistance	Never Assistance
New York State	\$151,638,491.30	\$6,580,204.97	\$76,510,625.82	\$68,547,660.52
New York City	63,085,256.76	3,040,846.94	33,181,124.71	26,863,285.11
Rest of State	88,553,234.55	3,539,358.03	43,329,501.11	41,684,375.41
Albany	2,387,646.38	83,551.81	1,028,311.51	1,275,783.06
Allegany	481,832.07	27,768.75	316,063.01	138,000.31
Broome	1,434,598.47	112,973.40	769,037.65	552,587.42
Cattaraugus	852,121.34	41,172.48	477,381.00	333,567.86
Cayuga	766,580.18	29,354.85	484,366.54	252,858.79
Chautauqua	1,154,530.45	93,315.91	719,725.30	341,489.24
Chemung	731,950.34	39,333.30	450,294.63	242,322.41
Chenango	435,453.61	25,298.65	241,991.19	168,163.77
Clinton	788,550.16	44,994.90	398,731.96	344,823.30
Columbia	479,748.82	26,548.19	256,064.08	197,136.55
Cortland	405,547.05	18,985.31	245,386.52	141,175.22
Delaware	390,130.20	24,417.45	250,450.19	115,262.56
Dutchess	2,397,083.81	51,109.55	871,234.68	1,474,739.58
Erie	6,617,968.35	390,562.15	3,778,640.00	2,448,766.20
Essex	270,047.18	8,406.90	141,945.39	119,694.89
Franklin	438,457.46	14,111.00	230,830.09	193,516.37
Fulton	541,573.50	13,888.23	365,867.19	161,818.08
Genesee	477,013.41	16,228.50	245,754.75	215,030.16
Greene	384,925.79	12,277.99	193,590.31	179,057.49
Hamilton	23,622.58	155.00	13,165.63	10,301.95
Herkimer	487,977.66	24,941.28	289,854.71	173,181.67
Jefferson	1,342,627.32	63,357.02	552,668.92	726,601.38
Lewis	342,395.16	7,082.25	226,184.47	109,128.44
Livingston	585,180.51	34,711.13	336,942.59	213,526.79
Madison	475,345.45	14,858.16	264,996.56	195,490.73
Monroe	5,771,772.49	272,890.64	3,056,334.07	2,442,547.78
Montgomery	499,480.60	32,286.95	336,003.69	131,189.96
Nassau	8,382,791.90	204,950.78	3,085,716.38	5,092,124.74
Niagara	1,668,599.76	113,176.22	1,038,893.53	516,530.01
Oneida	1,521,116.73	118,480.58	890,971.28	511,664.87
Onondaga	3,855,562.87	150,865.60	2,307,446.75	1,397,250.52
Ontario	950,963.64	38,746.39	497,042.99	415,174.26
Orange	3,330,875.36	108,312.41	1,355,901.28	1,866,661.67
Orleans	363,717.87	24,461.37	217,854.25	121,402.25
Oswego	1,157,895.73	74,657.93	702,534.63	380,703.17
Otsego	384,189.19	10,861.08	190,723.86	182,604.25
Putnam	670,960.30	3,085.56	215,062.18	452,812.56
Rensselaer	1,624,370.82	96,767.80	696,588.85	831,014.17
Rockland	2,290,241.11	53,030.86	944,677.81	1,292,532.44
St. Lawrence	1,077,263.65	44,635.67	704,738.01	327,889.97
Saratoga	1,634,421.38	20,704.50	719,457.43	894,259.45
Schenectady	1,356,995.48	45,207.09	596,686.10	715,102.29
Schoharie	296,672.98	8,425.99	173,143.63	115,103.36
Schuyler	173,789.57	12,355.65	115,533.80	45,900.12
Seneca	308,918.96	10,733.98	158,483.99	139,700.99
Steuben	843,999.61	36,440.51	524,366.64	283,192.46
Suffolk	13,122,842.49	377,999.25	6,030,971.74	6,713,871.50
Sullivan	692,367.75	30,602.49	357,268.22	304,497.04
Tioga	470,676.41	30,422.81	268,401.87	171,851.73
Tompkins	610,494.13	43,095.37	312,538.39	254,860.37
Ulster	1,524,669.05	80,136.87	788,583.14	655,949.04
Warren	775,824.66	21,149.53	368,752.61	385,922.52
Washington	668,664.68	20,668.85	371,738.90	276,256.93
Wayne	836,653.13	24,257.38	430,265.99	382,129.76
Westchester	6,442,366.54	188,464.23	2,448,120.52	3,805,781.79
Wyoming	392,158.75	16,508.16	178,201.58	197,449.01
Yates	159,009.71	5,571.37	97,018.13	56,420.21

Table 21
AGGREGATE CLAIMS
TOTAL TEMPORARY ASSISTANCE
Family Assistance and Safety Net Assistance
April 2015

Month	New York State			New York City			Rest of State		
	Recipients	Net Expenditures	Monthly Average Payment	Recipients	Net Expenditures	Monthly Average Payment	Recipients	Net Expenditures	Monthly Average Payment
May 2013	587,316	\$232,005,475	\$395.03	356,604	\$159,988,278	\$448.64	230,712	\$72,017,197	\$312.15
June 2013	580,109	\$226,937,945	\$391.20	352,026	\$158,719,731	\$450.88	228,083	\$68,218,214	\$299.09
July 2013	576,355	\$211,426,179	\$366.83	347,892	\$143,454,205	\$412.35	228,463	\$67,971,974	\$297.52
August 2013	573,835	\$210,360,299	\$366.59	345,020	\$142,617,183	\$413.36	228,815	\$67,743,116	\$296.06
September 2013	569,174	\$227,509,614	\$399.72	341,812	\$160,904,569	\$470.74	227,362	\$66,605,045	\$292.95
October 2013	573,292	\$221,089,044	\$385.65	342,337	\$151,890,249	\$443.69	230,955	\$69,198,795	\$299.62
November 2013	568,983	\$218,665,959	\$384.31	340,896	\$151,876,636	\$445.52	228,087	\$66,789,323	\$292.82
December 2013	566,424	\$289,590,691	\$511.26	339,513	\$215,151,686	\$633.71	226,911	\$74,439,005	\$328.05
January 2014	560,991	\$214,034,507	\$381.53	333,708	\$146,731,005	\$439.70	227,283	\$67,303,502	\$296.12
February 2014	561,525	\$210,098,286	\$374.16	333,162	\$140,749,161	\$422.46	228,363	\$69,349,125	\$303.68
March 2014	566,456	\$228,188,025	\$402.83	334,732	\$155,317,544	\$464.01	231,724	\$72,870,481	\$314.47
April 2014	565,463	\$226,859,172	\$401.19	332,074	\$151,598,291	\$456.52	233,389	\$75,260,881	\$322.47
May 2014	564,612	\$219,689,192	\$389.10	330,872	\$144,710,332	\$437.36	233,740	\$74,978,860	\$320.78
June 2014	563,201	\$223,739,257	\$397.26	331,315	\$151,675,137	\$457.80	231,886	\$72,064,120	\$310.77
July 2014	562,676	\$213,011,067	\$378.57	331,407	\$143,826,733	\$433.99	231,269	\$69,184,334	\$299.15
August 2014	565,719	\$204,523,866	\$361.53	336,383	\$135,173,840	\$401.85	229,336	\$69,350,026	\$302.39
September 2014	567,809	\$227,633,336	\$400.90	339,380	\$158,726,208	\$467.69	228,429	\$68,907,128	\$301.66
October 2014	571,842	\$243,254,896	\$425.39	339,804	\$170,325,629	\$501.25	232,038	\$72,929,267	\$314.30
November 2014	566,688	\$206,234,990	\$363.93	341,498	\$142,024,104	\$415.89	225,190	\$64,210,886	\$285.14
December 2014	573,328	\$306,318,006	\$534.28	344,154	\$230,365,002	\$669.37	229,174	\$75,953,004	\$331.42
January 2015	569,551	\$255,595,844	\$448.77	343,400	\$187,089,679	\$544.82	226,151	\$68,506,165	\$302.92
February 2015	570,637	\$219,722,713	\$385.05	346,155	\$152,672,206	\$441.05	224,482	\$67,050,507	\$298.69
March 2015	577,132	\$237,626,071	\$411.74	349,639	\$163,110,420	\$466.51	227,493	\$74,515,651	\$327.55
April 2015	575,508	\$229,114,841	\$398.11	349,039	\$158,868,270	\$455.16	226,469	\$70,246,571	\$310.18

Note: Data pursuant to a New York State Legislative mandate S. 6057-B/A. 9557-B, Chapter 57, L. 2004.

Based on local district claims submitted on claims Schedules A and C. Includes reimbursable expenditures for basic assistance, rent supplements, family shelters, domestic violence shelters, security deposits, transitional services, diversion transportation, diversion payments, and other non-assistance. These claims are net of cancellations and refunds, and include any reconciliations and supplemental claims applied to the month after initial expenditure reporting is done. Thus, these data differ from the expenditure data presented elsewhere in this document, which are derived from original payment issuance activity during the month, net of cancellations and refunds in that month.

District claiming activity for recent months is generally not complete before the statutorily required due date for this report. Thus, claims for recent months may appear substantially below those for earlier months. Claims tables in future months of this report will continue to include the historical periods above, adjusted for claiming activity occurring subsequent to this report.

Table 22
AGGREGATE CLAIMS
FEDERALLY PARTICIPATING - TANF
Family Assistance-FP and Safety Net Assistance-FP
April 2015

Month	New York State			New York City			Rest of State		
	Recipients	Net Expenditures	Monthly Average Payment	Recipients	Net Expenditures	Monthly Average Payment	Recipients	Net Expenditures	Monthly Average Payment
May 2013	259,401	\$99,347,713	\$382.99	138,701	\$63,963,986	\$461.16	120,700	\$35,383,727	\$293.15
June 2013	266,926	\$105,710,879	\$396.03	147,058	\$71,917,960	\$489.04	119,868	\$33,792,919	\$281.92
July 2013	264,767	\$90,319,986	\$341.13	144,851	\$57,077,984	\$394.05	119,916	\$33,242,002	\$277.21
August 2013	265,230	\$89,152,840	\$336.13	144,486	\$55,672,931	\$385.32	120,744	\$33,479,909	\$277.28
September 2013	263,064	\$105,071,992	\$399.42	142,765	\$71,619,380	\$501.66	120,299	\$33,452,612	\$278.08
October 2013	265,039	\$96,154,933	\$362.80	143,191	\$61,776,738	\$431.43	121,848	\$34,378,195	\$282.14
November 2013	261,958	\$96,127,899	\$366.96	141,744	\$63,281,911	\$446.45	120,214	\$32,845,988	\$273.23
December 2013	260,468	\$133,210,019	\$511.43	141,437	\$95,753,274	\$677.00	119,031	\$37,456,745	\$314.68
January 2014	256,124	\$92,822,352	\$362.41	137,459	\$59,856,956	\$435.45	118,665	\$32,965,396	\$277.80
February 2014	255,541	\$89,422,412	\$349.93	136,833	\$56,115,950	\$410.11	118,708	\$33,306,462	\$280.57
March 2014	255,898	\$100,929,312	\$394.41	136,966	\$65,690,115	\$479.61	118,932	\$35,239,197	\$296.30
April 2014	253,936	\$97,135,009	\$382.52	134,985	\$61,105,554	\$452.68	118,951	\$36,029,455	\$302.89
May 2014	253,505	\$92,440,031	\$364.65	134,113	\$57,980,291	\$432.32	119,392	\$34,459,740	\$288.63
June 2014	253,465	\$101,555,737	\$400.67	134,148	\$67,124,064	\$500.37	119,317	\$34,431,673	\$288.57
July 2014	252,643	\$86,880,628	\$343.89	133,462	\$53,597,492	\$401.59	119,181	\$33,283,136	\$279.27
August 2014	254,875	\$83,867,022	\$329.05	136,240	\$50,504,032	\$370.70	118,635	\$33,362,990	\$281.22
September 2014	254,656	\$99,943,471	\$392.46	136,630	\$66,251,811	\$484.90	118,026	\$33,691,660	\$285.46
October 2014	255,720	\$104,840,640	\$409.98	136,355	\$69,873,173	\$512.44	119,365	\$34,967,467	\$292.95
November 2014	255,842	\$86,427,963	\$337.82	139,293	\$55,129,034	\$395.78	116,549	\$31,298,929	\$268.55
December 2014	254,126	\$119,555,723	\$470.46	137,103	\$83,210,170	\$606.92	117,023	\$36,345,553	\$310.58
January 2015	251,342	\$109,320,563	\$434.95	136,237	\$76,800,893	\$563.73	115,105	\$32,519,670	\$282.52
February 2015	250,234	\$88,892,322	\$355.24	136,216	\$57,291,721	\$420.59	114,018	\$31,600,601	\$277.15
March 2015	251,794	\$100,349,035	\$398.54	137,283	\$65,803,936	\$479.33	114,511	\$34,545,099	\$301.67
April 2015	248,893	\$91,382,208	\$367.15	135,267	\$59,362,524	\$438.85	113,626	\$32,019,684	\$281.80

Note: Data pursuant to a New York State Legislative mandate S. 6057-B/A. 9557-B, Chapter 57, L. 2004.
Based on local district claims submitted on claims Schedules A and C. Includes reimbursable expenditures for basic assistance, rent supplements, family shelters, domestic violence shelters, security deposits, transitional services, diversion transportation, diversion payments, and other non-assistance. These claims are net of cancellations and refunds, and include any reconciliations and supplemental claims applied to the month after initial expenditure reporting is done. Thus, these data differ from the expenditure data presented elsewhere in this document, which are derived from original payment issuance activity during the month, net of cancellations and refunds in that month.
District claiming activity for recent months is generally not complete before the statutorily required due date for this report. Thus, claims for recent months may appear substantially below those for earlier months. Claims tables in future months of this report will continue to include the historical periods above, adjusted for claiming activity occurring subsequent to this report.

Table 23
AGGREGATE CLAIMS
FEDERALLY NON-PARTICIPATING
Safety Net Assistance-FNP Maintenance of Effort
April 2015

Month	New York State			New York City			Rest of State		
	Recipients	Net Expenditures	Monthly Average Payment	Recipients	Net Expenditures	Monthly Average Payment	Recipients	Net Expenditures	Monthly Average Payment
May 2013	126,753	\$38,944,721	\$307.25	89,559	\$30,063,718	\$335.69	37,194	\$8,881,003	\$238.78
June 2013	116,556	\$31,079,711	\$266.65	79,424	\$23,033,165	\$290.00	37,132	\$8,046,546	\$216.70
July 2013	116,391	\$32,899,994	\$282.67	78,992	\$24,451,850	\$309.55	37,399	\$8,448,144	\$225.89
August 2013	117,690	\$30,713,124	\$260.97	80,021	\$22,284,105	\$278.48	37,669	\$8,429,019	\$223.77
September 2013	117,493	\$41,604,989	\$354.11	79,627	\$33,179,665	\$416.69	37,866	\$8,425,324	\$222.50
October 2013	116,490	\$35,164,890	\$301.87	78,167	\$26,249,399	\$335.81	38,323	\$8,915,491	\$232.64
November 2013	118,437	\$34,340,355	\$289.95	80,274	\$25,654,665	\$319.59	38,163	\$8,685,690	\$227.59
December 2013	117,452	\$51,693,316	\$440.12	78,754	\$42,298,783	\$537.10	38,698	\$9,394,533	\$242.77
January 2014	116,278	\$34,146,338	\$293.66	77,255	\$25,344,805	\$328.07	39,023	\$8,801,533	\$225.55
February 2014	116,505	\$31,249,687	\$268.23	77,327	\$22,124,863	\$286.12	39,178	\$9,124,824	\$232.91
March 2014	117,670	\$41,136,866	\$349.60	78,426	\$31,555,885	\$402.37	39,244	\$9,580,981	\$244.14
April 2014	114,869	\$35,803,039	\$311.69	75,862	\$25,646,627	\$338.07	39,007	\$10,156,412	\$260.37
May 2014	114,478	\$33,507,779	\$292.70	75,265	\$24,181,272	\$321.28	39,213	\$9,326,507	\$237.84
June 2014	114,786	\$38,994,519	\$339.71	75,107	\$29,713,919	\$395.62	39,679	\$9,280,600	\$233.89
July 2014	114,537	\$32,490,337	\$283.67	74,604	\$23,371,909	\$313.28	39,933	\$9,118,428	\$228.34
August 2014	116,548	\$29,347,170	\$251.80	77,266	\$20,625,986	\$266.95	39,282	\$8,721,184	\$222.01
September 2014	117,457	\$39,832,741	\$339.13	77,600	\$30,949,827	\$398.84	39,857	\$8,882,914	\$222.87
October 2014	117,954	\$36,920,579	\$313.01	77,641	\$27,254,967	\$351.04	40,313	\$9,665,612	\$239.76
November 2014	116,448	\$31,064,132	\$266.76	76,629	\$22,565,979	\$294.48	39,819	\$8,498,153	\$213.42
December 2014	121,796	\$60,547,475	\$497.12	80,895	\$51,039,379	\$630.93	40,901	\$9,508,096	\$232.47
January 2015	120,097	\$44,796,614	\$373.00	79,585	\$35,625,838	\$447.65	40,512	\$9,170,776	\$226.37
February 2015	122,369	\$34,736,336	\$283.87	82,108	\$25,627,840	\$312.12	40,261	\$9,108,496	\$226.24
March 2015	121,592	\$42,940,966	\$353.16	81,214	\$32,916,088	\$405.30	40,378	\$10,024,878	\$248.28
April 2015	121,779	\$36,292,970	\$298.02	81,603	\$26,620,651	\$326.22	40,176	\$9,672,319	\$240.75

Note: Data pursuant to a New York State Legislative mandate S. 6057-B/A. 9557-B, Chapter 57, L. 2004.

Based on local district claims submitted on claims Schedules A and C. Includes reimbursable expenditures for basic assistance, rent supplements, family shelters, domestic violence shelters, security deposits, transitional services, diversion transportation, diversion payments, and other non-assistance. These claims are net of cancellations and refunds, and include any reconciliations and supplemental claims applied to the month after initial expenditure reporting is done. Thus, these data differ from the expenditure data presented elsewhere in this document, which are derived from original payment issuance activity during the month, net of cancellations and refunds in that month.

District claiming activity for recent months is generally not complete before the statutorily required due date for this report. Thus, claims for recent months may appear substantially below those for earlier months. Claims tables in future months of this report will continue to include the historical periods above, adjusted for claiming activity occurring subsequent to this report.

Table 24
AGGREGATE CLAIMS
FEDERALLY NON-PARTICIPATING
Safety Net Assistance-FNP and Family Assistance-FNP Non-Maintenance of Effort
April 2015

Month	New York State			New York City			Rest of State		
	Recipients	Net Expenditures	Monthly Average Payment	Recipients	Net Expenditures	Monthly Average Payment	Recipients	Net Expenditures	Monthly Average Payment
May 2013	201,162	\$93,713,041	\$465.86	128,344	\$65,960,574	\$513.94	72,818	\$27,752,467	\$381.12
June 2013	196,627	\$90,147,355	\$458.47	125,544	\$63,768,606	\$507.94	71,083	\$26,378,749	\$371.10
July 2013	195,197	\$88,206,199	\$451.88	124,049	\$61,924,371	\$499.19	71,148	\$26,281,828	\$369.40
August 2013	190,915	\$90,494,335	\$474.00	120,513	\$64,660,147	\$536.54	70,402	\$25,834,188	\$366.95
September 2013	188,617	\$80,832,633	\$428.55	119,420	\$56,105,524	\$469.82	69,197	\$24,727,109	\$357.34
October 2013	191,763	\$89,769,221	\$468.13	120,979	\$63,864,112	\$527.89	70,784	\$25,905,109	\$365.97
November 2013	188,588	\$88,197,705	\$467.67	118,878	\$62,940,060	\$529.45	69,710	\$25,257,645	\$362.32
December 2013	188,504	\$104,687,356	\$555.36	119,322	\$77,099,629	\$646.15	69,182	\$27,587,727	\$398.77
January 2014	188,589	\$87,065,817	\$461.67	118,994	\$61,529,244	\$517.08	69,595	\$25,536,573	\$366.93
February 2014	189,479	\$89,426,187	\$471.96	119,002	\$62,508,348	\$525.27	70,477	\$26,917,839	\$381.94
March 2014	192,888	\$86,121,847	\$446.49	119,340	\$58,071,544	\$486.61	73,548	\$28,050,303	\$381.39
April 2014	196,658	\$93,921,124	\$477.59	121,227	\$64,846,110	\$534.91	75,431	\$29,075,014	\$385.45
May 2014	196,629	\$93,741,382	\$476.74	121,494	\$62,548,769	\$514.83	75,135	\$31,192,613	\$415.15
June 2014	194,950	\$83,189,001	\$426.72	122,060	\$54,837,154	\$449.26	72,890	\$28,351,847	\$388.97
July 2014	195,496	\$93,640,102	\$478.99	123,341	\$66,857,332	\$542.05	72,155	\$26,782,770	\$371.18
August 2014	194,296	\$91,309,674	\$469.95	122,877	\$64,043,822	\$521.20	71,419	\$27,265,852	\$381.77
September 2014	195,696	\$87,857,124	\$448.95	125,150	\$61,524,570	\$491.61	70,546	\$26,332,554	\$373.27
October 2014	198,168	\$101,493,677	\$512.16	125,808	\$73,197,489	\$581.82	72,360	\$28,296,188	\$391.05
November 2014	194,398	\$88,742,895	\$456.50	125,576	\$64,329,091	\$512.27	68,822	\$24,413,804	\$354.74
December 2014	197,406	\$126,214,808	\$639.37	126,156	\$96,115,453	\$761.88	71,250	\$30,099,355	\$422.45
January 2015	198,112	\$101,478,667	\$512.23	127,578	\$74,662,948	\$585.23	70,534	\$26,815,719	\$380.18
February 2015	198,034	\$96,094,055	\$485.24	127,831	\$69,752,645	\$545.66	70,203	\$26,341,410	\$375.22
March 2015	203,746	\$94,336,070	\$463.01	131,142	\$64,390,396	\$491.00	72,604	\$29,945,674	\$412.45
April 2015	204,836	\$101,439,663	\$495.22	132,169	\$72,885,095	\$551.45	72,667	\$28,554,568	\$392.95

Note: Data pursuant to a New York State Legislative mandate S. 6057-B/A. 9557-B, Chapter 57, L. 2004.

Based on local district claims submitted on claims Schedules A and C. Includes reimbursable expenditures for basic assistance, rent supplements, family shelters, domestic violence shelters, security deposits, transitional services, diversion transportation, diversion payments, and other non-assistance. These claims are net of cancellations and refunds, and include any reconciliations and supplemental claims applied to the month after initial expenditure reporting is done. Thus, these data differ from the expenditure data presented elsewhere in this document, which are derived from original payment issuance activity during the month, net of cancellations and refunds in that month.

District claiming activity for recent months is generally not complete before the statutorily required due date for this report. Thus, claims for recent months may appear substantially below those for earlier months. Claims tables in future months of this report will continue to include the historical periods above, adjusted for claiming activity occurring subsequent to this report.

Table 25
HOME ENERGY ASSISTANCE PROGRAM*
Number and Dollar Amount of Benefits Authorized and Administrative Allocations - Federal Fiscal Year to Date
April 2015

Local District	Benefits Authorized		Administrative Allocations
	Number	Dollar Amount	
New York State	1,548,872	\$307,980,463	\$22,163,703
New York City	709,219	36,784,063	6,011,430
Rest of State	839,653	271,196,400	16,152,273
Albany	20,700	5,476,726	280,463
Allegany	6,155	2,657,351	159,968
Broome	20,989	7,097,960	370,297
Cattaraugus	11,196	4,281,498	265,711
Cayuga	7,895	3,158,773	168,152
Chautauqua	18,414	6,467,790	399,629
Chemung	9,928	2,961,654	157,417
Chenango	7,106	3,335,089	188,389
Clinton	13,129	6,605,024	324,815
Columbia	5,683	2,328,443	121,613
Cortland	5,395	1,966,726	122,529
Delaware	6,566	3,086,251	162,462
Dutchess	16,228	4,814,786	275,891
Erie	120,226	33,667,779	2,767,015
Essex	3,703	1,789,786	102,176
Franklin	8,828	4,368,066	219,367
Fulton	8,445	3,638,828	217,146
Genesee	4,625	1,516,148	102,673
Greene	5,872	2,655,239	154,000
Hamilton	512	244,598	13,991
Herkimer	9,305	3,872,727	203,771
Jefferson	11,661	4,650,423	252,407
Lewis	3,759	1,921,639	103,302
Livingston	5,668	2,277,437	129,281
Madison	7,170	3,054,575	171,450
Monroe	64,991	16,111,334	814,572
Montgomery	7,232	3,004,421	173,154
Nassau	28,584	4,852,157	281,629
Niagara	23,275	6,916,670	424,758
Oneida	30,104	11,314,263	672,142
Onondaga	40,392	11,349,259	621,383
Ontario	7,685	2,529,321	132,975
Orange	21,631	6,667,156	393,665
Orleans	4,511	1,938,980	116,132
Oswego	12,359	5,417,992	285,032
Otsego	6,721	3,234,847	175,733
Putnam	2,202	724,560	41,797
Rensselaer	11,570	3,848,315	220,169
Rockland	15,911	3,320,074	179,269
St. Lawrence	16,015	7,148,678	423,378
Saratoga	13,242	5,563,753	331,513
Schenectady	12,449	3,524,465	216,630
Schoharie	4,071	2,016,485	113,508
Schuyler	2,553	1,279,826	70,014
Seneca	3,226	1,246,769	69,060
Steuben	11,409	4,549,732	297,123
Suffolk	53,480	17,000,545	937,692
Sullivan	9,368	3,806,446	227,275
Tioga	5,884	2,795,548	146,159
Tompkins	6,743	2,147,539	111,030
Ulster	19,392	7,387,880	417,598
Warren	6,624	2,782,589	167,869
Washington	6,301	2,950,563	170,033
Wayne	7,420	2,913,101	136,378
Westchester	39,599	2,752,475	223,130
Wyoming	3,020	1,174,392	73,052
Yates	2,531	1,030,949	54,506

* Please Note: The 2015 Home Energy Assistance Program Federal Fiscal Year is October 1, 2014 through September 30, 2015.

Table 26
HOME ENERGY ASSISTANCE PROGRAM - NON-EMERGENCY*
 Number, Total Dollar Amount and Average Dollar Amount of Benefits Authorized - Federal Fiscal Year to Date
 April 2015

Local District	Autopay			Regular Non-Autopay		
	Benefits Authorized	Dollar Amount Authorized	Average Dollar Amount	Benefits Authorized	Dollar Amount Authorized	Average Dollar Amount
New York State	1,176,598	\$142,466,414	\$121	219,208	\$96,860,586	\$442
New York City	683,352	27,889,965	41	20,461	7,059,566	345
Rest of State	493,246	114,576,449	232	198,747	89,801,020	452
Albany	15,360	3,120,710	203	4,019	1,611,088	401
Allegany	2,348	886,175	377	2,239	1,031,671	461
Broome	11,987	2,982,178	249	5,735	2,450,578	427
Cattaraugus	5,188	1,687,728	325	3,643	1,625,302	446
Cayuga	3,721	1,187,348	319	2,534	1,139,961	450
Chautauqua	9,810	3,005,637	306	5,780	2,353,312	407
Chemung	5,918	1,228,098	208	2,786	1,098,663	394
Chenango	2,676	965,629	361	2,405	1,282,222	533
Clinton	4,987	2,134,018	428	3,025	1,650,662	546
Columbia	2,905	843,596	290	1,669	883,846	530
Cortland	2,746	753,058	274	1,617	743,833	460
Delaware	2,521	927,434	368	2,080	1,114,491	536
Dutchess	10,702	2,051,607	192	3,270	1,590,104	486
Erie	61,325	15,286,371	249	32,337	12,243,292	379
Essex	1,374	490,106	357	1,429	815,868	571
Franklin	3,056	1,153,688	378	2,313	1,319,057	570
Fulton	3,644	1,219,180	335	2,547	1,240,425	487
Genesee	2,663	701,077	263	1,341	591,284	441
Greene	2,427	797,964	329	1,747	947,837	543
Hamilton	193	64,683	335	205	117,685	574
Herkimer	4,127	1,294,176	314	2,936	1,374,776	468
Jefferson	6,019	1,881,388	313	3,219	1,521,983	473
Lewis	1,295	586,252	453	1,185	651,043	549
Livingston	2,869	970,939	338	1,602	741,609	463
Madison	3,112	980,073	315	2,165	1,070,681	495
Monroe	50,620	10,201,380	202	9,404	3,491,777	371
Montgomery	3,386	1,100,957	325	2,140	1,013,150	473
Nassau	24,319	2,428,159	100	2,804	1,735,805	619
Niagara	13,828	3,354,970	243	6,009	2,410,733	401
Oneida	15,034	4,075,885	271	8,699	3,899,549	448
Onondaga	27,540	6,066,482	220	9,493	3,649,349	384
Ontario	4,470	1,115,087	249	2,211	943,256	427
Orange	13,323	2,725,367	205	5,002	2,251,985	450
Orleans	1,926	726,926	377	1,492	705,098	473
Oswego	6,570	2,443,286	372	3,309	1,676,448	507
Otsego	2,436	880,886	362	2,132	1,175,927	552
Putnam	1,278	253,979	199	667	341,120	511
Rensselaer	6,962	1,609,512	231	2,908	1,346,843	463
Rockland	12,696	1,939,270	153	1,690	629,926	373
St. Lawrence	6,054	2,164,920	358	4,332	2,282,775	527
Saratoga	6,818	2,243,715	329	3,556	1,774,829	499
Schenectady	9,514	2,273,435	239	2,200	901,130	410
Schoharie	1,509	619,589	411	1,216	662,774	545
Schuyler	880	357,159	406	845	445,730	527
Seneca	1,539	406,780	264	1,121	540,582	482
Steuben	4,306	1,398,871	325	4,199	1,906,669	454
Suffolk	34,959	7,818,749	224	9,345	4,782,479	512
Sullivan	4,256	1,041,840	245	2,467	1,371,696	556
Tioga	2,348	942,188	401	1,829	948,181	518
Tompkins	4,082	880,459	216	1,604	740,568	462
Ulster	10,005	2,472,739	247	4,334	2,302,856	531
Warren	3,036	960,047	316	1,995	984,166	493
Washington	2,532	955,161	377	1,969	1,025,244	521
Wayne	4,277	1,418,795	332	2,069	940,774	455
Westchester	37,254	1,687,174	45	1,866	791,462	424
Wyoming	1,385	460,178	332	1,196	532,831	446
Yates	1,131	353,391	312	816	384,035	471

* Please Note: The 2015 Home Energy Assistance Program Federal Fiscal Year is October 1, 2014 through September 30, 2015.

Table 27
HOME ENERGY ASSISTANCE PROGRAM - EMERGENCY*
Number, Total Dollar Amount and Average Dollar Amount of Benefits Authorized - Federal Fiscal Year to Date
April 2015

Local District	Emergency			Furnace Replacement			Furnace Repair & Repair/Replacement Estimates		
	Benefits Authorized	Dollar Amount Authorized	Average Dollar Amount	Benefits Authorized	Dollar Amount Authorized	Average Dollar Amount	Benefits Authorized	Dollar Amount Authorized	Average Dollar Amount
New York State	151,592	\$65,553,707	\$432	788	\$2,699,060	\$3,425	686	\$400,696	\$584
New York City	5,363	1,592,947	297	42	240,693	5,731	1	892	892
Rest of State	146,229	63,960,760	437	746	2,458,367	3,295	685	399,804	584
Albany	1,283	630,885	492	23	108,801	4,730	15	5,242	349
Allegany	1,502	632,330	421	29	90,982	3,137	37	16,193	438
Broome	3,231	1,618,110	501	11	39,644	3,604	25	7,450	298
Cattaraugus	2,321	918,515	396	14	43,492	3,107	30	6,461	215
Cayuga	1,613	801,640	497	6	21,564	3,594	21	8,260	393
Chautauqua	2,775	1,018,745	367	20	58,033	2,902	29	32,063	1,106
Chemung	1,205	589,250	489	14	43,885	3,135	5	1,758	352
Chenango	2,001	1,038,224	519	14	40,577	2,898	10	8,437	844
Clinton	5,069	2,748,935	542	19	59,013	3,106	29	12,396	427
Columbia	1,102	577,255	524	7	23,746	3,392	0	0	0
Cortland	1,017	444,650	437	5	19,227	3,845	10	5,958	596
Delaware	1,950	1,019,535	523	5	20,839	4,168	10	3,952	395
Dutchess	2,233	1,105,505	495	4	15,710	3,928	19	51,860	2,729
Erie	26,452	5,887,915	223	80	232,058	2,901	32	18,143	567
Essex	892	479,910	538	0	0	0	8	3,902	488
Franklin	3,453	1,885,865	546	2	7,300	3,650	4	2,156	539
Fulton	2,224	1,144,100	514	10	27,490	2,749	20	7,633	382
Genesee	620	223,305	360	0	0	0	1	482	482
Greene	1,689	888,260	526	4	16,769	4,192	5	4,409	882
Hamilton	114	62,230	546	0	0	0	0	0	0
Herkimer	2,222	1,156,255	520	13	38,092	2,930	7	9,428	1,347
Jefferson	2,411	1,215,230	504	8	30,655	3,832	4	1,167	292
Lewis	1,272	677,745	533	2	4,750	2,375	5	1,849	370
Livingston	1,179	534,180	453	13	29,859	2,297	5	850	170
Madison	1,865	969,335	520	18	30,429	1,691	10	4,057	406
Monroe	4,931	2,339,340	474	28	76,407	2,729	8	2,430	304
Montgomery	1,691	868,440	514	5	18,924	3,785	10	2,950	295
Nassau	1,451	643,505	443	8	43,765	5,471	2	923	462
Niagara	3,367	1,047,515	311	27	88,505	3,278	44	14,947	340
Oneida	6,326	3,245,095	513	33	84,431	2,559	12	9,303	775
Onondaga	3,307	1,551,035	469	21	67,041	3,192	31	15,352	495
Ontario	987	424,560	430	13	43,786	3,368	4	2,632	658
Orange	3,274	1,564,880	478	26	120,199	4,623	6	4,725	787
Orleans	1,073	442,145	412	18	63,812	3,545	2	999	500
Oswego	2,463	1,272,480	517	7	20,956	2,994	10	4,822	482
Otsego	2,136	1,134,240	531	14	43,060	3,076	3	734	245
Putnam	253	123,195	487	1	5,350	5,350	3	916	305
Rensselaer	1,688	852,635	505	10	36,640	3,664	2	2,685	1,342
Rockland	1,519	741,475	488	2	8,040	4,020	4	1,363	341
St. Lawrence	5,543	2,594,050	468	25	85,338	3,414	61	21,595	354
Saratoga	2,817	1,445,595	513	31	92,713	2,991	20	6,901	345
Schenectady	720	320,620	445	7	23,477	3,354	8	5,803	725
Schoharie	1,337	709,055	530	6	23,927	3,988	3	1,140	380
Schuyler	809	417,695	516	17	58,430	3,437	2	812	406
Seneca	549	268,449	489	7	22,600	3,229	10	8,358	836
Steuben	2,863	1,165,965	407	24	59,116	2,463	17	19,111	1,124
Suffolk	9,121	4,264,320	468	24	110,893	4,621	31	24,104	778
Sullivan	2,637	1,379,520	523	4	11,074	2,768	4	2,316	579
Tioga	1,697	875,160	516	6	20,450	3,408	4	9,569	2,392
Tompkins	1,044	508,670	487	4	15,350	3,838	9	2,492	277
Ulster	5,033	2,558,394	508	13	49,639	3,818	7	4,252	607
Warren	1,581	805,755	510	9	30,346	3,372	3	2,275	758
Washington	1,779	920,215	517	12	41,765	3,480	9	8,178	909
Wayne	1,060	524,970	495	8	27,177	3,397	6	1,385	231
Westchester	473	246,723	522	5	26,420	5,284	1	696	696
Wyoming	435	166,535	383	4	14,848	3,712	0	0	0
Yates	570	270,620	475	6	20,973	3,496	8	1,930	241

* Please Note: The 2015 Home Energy Assistance Program Federal Fiscal Year is October 1, 2014 through September 30, 2015.

Table 28
FEDERAL ALL FAMILIES WORK PARTICIPATION RATES
TANF, Safety Net Assistance MOE and Combined TANF and Safety Net Assistance MOE
April 2015

Local District	Combined TANF and Safety Net Assistance MOE			TANF			Safety Net Assistance MOE		
	Rate	Numerator	Denominator	Rate	Numerator	Denominator	Rate	Numerator	Denominator
New York State*	28.8%	26,634	92,587	26.6%	15,658	59,163	32.8%	10,976	33,424
New York City*	32.5%	17,459	53,745	32.2%	9,865	31,209	33.5%	7,594	22,536
Rest of State	22.8%	7,652	33,576	22.0%	5,098	23,208	24.6%	2,554	10,368
Albany	16.7%	148	884	16.7%	100	600	16.9%	48	284
Allegany	20.3%	28	138	19.0%	20	105	24.2%	8	33
Broome	17.3%	173	1,000	17.4%	114	656	17.2%	59	344
Cattaraugus	27.7%	33	119	30.7%	31	101	11.1%	2	18
Cayuga	10.9%	27	247	11.5%	24	208	7.7%	3	39
Chautauqua	19.3%	168	871	19.6%	110	562	18.8%	58	309
Chemung	14.6%	20	137	13.9%	16	115	18.2%	4	22
Chenango	9.1%	9	99	9.2%	8	87	8.3%	1	12
Clinton	17.6%	29	165	19.2%	24	125	12.5%	5	40
Columbia	15.9%	22	138	13.9%	16	115	26.1%	6	23
Cortland	18.8%	27	144	16.9%	21	124	30.0%	6	20
Delaware	17.0%	9	53	17.6%	9	51	0.0%	0	2
Dutchess	14.2%	37	261	13.6%	23	169	15.2%	14	92
Erie	40.0%	1,992	4,985	38.2%	1,309	3,427	43.8%	683	1,558
Essex	5.9%	1	17	6.3%	1	16	0.0%	0	1
Franklin	13.0%	19	146	12.4%	14	113	15.2%	5	33
Fulton	22.8%	13	57	21.2%	11	52	40.0%	2	5
Genesee	21.4%	22	103	20.0%	17	85	27.8%	5	18
Greene	40.4%	40	99	40.9%	27	66	39.4%	13	33
Hamilton	0.0%	0	3	0.0%	0	3	N/A	0	0
Herkimer	14.8%	18	122	14.9%	15	101	14.3%	3	21
Jefferson	15.6%	40	257	16.1%	36	224	12.1%	4	33
Lewis	4.8%	1	21	5.6%	1	18	0.0%	0	3
Livingston	8.7%	23	263	8.5%	18	212	9.8%	5	51
Madison	15.1%	18	119	15.2%	15	99	15.0%	3	20
Monroe	17.8%	1,027	5,785	16.6%	623	3,745	19.8%	404	2,040
Montgomery	21.2%	42	198	22.4%	37	165	15.2%	5	33
Nassau	27.4%	581	2,122	26.8%	360	1,341	28.3%	221	781
Niagara	16.6%	162	973	16.5%	114	690	17.0%	48	283
Oneida	23.5%	364	1,550	23.3%	263	1,131	24.1%	101	419
Onondaga	11.5%	272	2,355	10.9%	184	1,686	13.2%	88	669
Ontario	16.4%	33	201	14.8%	24	162	23.1%	9	39
Orange	26.7%	243	909	27.5%	151	550	25.6%	92	359
Orleans	16.9%	28	166	17.6%	21	119	14.9%	7	47
Oswego	9.0%	52	579	9.3%	45	486	7.5%	7	93
Otsego	14.8%	4	27	14.8%	4	27	N/A	0	0
Putnam	13.3%	2	15	14.3%	2	14	0.0%	0	1
Rensselaer	19.5%	153	783	19.9%	112	564	18.7%	41	219
Rockland	28.8%	75	260	30.2%	57	189	25.4%	18	71
St. Lawrence	24.2%	87	360	24.4%	68	279	23.5%	19	81
Saratoga	14.3%	5	35	14.3%	5	35	N/A	0	0
Schenectady	16.7%	111	664	16.9%	76	449	16.3%	35	215
Schoharie	15.0%	6	40	15.8%	6	38	0.0%	0	2
Schuyler	8.1%	5	62	6.0%	3	50	16.7%	2	12
Seneca	22.7%	17	75	22.0%	13	59	25.0%	4	16
Steuben	23.0%	62	270	22.1%	43	195	25.3%	19	75
Suffolk	33.0%	753	2,285	31.2%	490	1,572	36.9%	263	713
Sullivan	15.1%	26	172	13.1%	16	122	20.0%	10	50
Tioga	21.8%	12	55	22.0%	11	50	20.0%	1	5
Tompkins	19.3%	37	192	19.6%	28	143	18.4%	9	49
Ulster	10.3%	63	611	11.0%	52	474	8.0%	11	137
Warren	19.6%	9	46	20.5%	9	44	0.0%	0	2
Washington	23.6%	13	55	23.1%	12	52	33.3%	1	3
Wayne	13.5%	21	155	14.7%	20	136	5.3%	1	19
Westchester	22.3%	462	2,070	22.7%	262	1,153	21.8%	200	917
Wyoming	20.6%	7	34	19.4%	6	31	33.3%	1	3
Yates	4.2%	1	24	4.3%	1	23	0.0%	0	1

* Statewide and New York City participation rates are estimated from federal disaggregated reporting samples, which are the source of the rates used by the United States Department of Health and Human Services to determine if a state has met participation goals. Because the sample size is insufficient to permit rate estimates for non-New York City districts, rates for those districts are derived directly from automated systems data. Thus, Rest of State and New York City numerators and denominators will not sum to the statewide total. Estimates are from first quarter Federal Fiscal Year 2015 samples.

Table 29
WORK SANCTION STATUS BY PRESENCE IN FEDERAL ALL FAMILIES WORK PARTICIPATION CALCULATION
TANF, Safety Net Assistance MOE and Combined TANF and Safety Net Assistance MOE
 April 2015

Local District	Combined TANF and Safety Net Assistance MOE		TANF		Safety Net Assistance MOE	
	Sanctioned in the Denominator	Sanctioned Removed From Denominator	Sanctioned in the Denominator	Sanctioned Removed From Denominator	Sanctioned in the Denominator	Sanctioned Removed From Denominator
New York State*	6,740	5,638	3,810	3,566	2,930	2,072
New York City*	3,504	3,277	1,989	2,031	1,515	1,246
Rest of State	2,837	1,233	1,453	874	1,384	359
Albany	73	31	35	14	38	17
Allegany	8	8	4	8	4	0
Broome	142	46	64	36	78	10
Cattaraugus	5	5	5	5	0	0
Cayuga	24	9	12	6	12	3
Chautauqua	62	56	32	35	30	21
Chemung	21	8	11	5	10	3
Chenango	5	5	2	5	3	0
Clinton	10	2	7	1	3	1
Columbia	27	3	19	3	8	0
Cortland	2	7	1	5	1	2
Delaware	0	0	0	0	0	0
Dutchess	11	7	2	5	9	2
Erie	302	169	157	122	145	47
Essex	3	3	3	3	0	0
Franklin	13	10	8	8	5	2
Fulton	1	2	1	1	0	1
Genesee	8	3	4	3	4	0
Greene	12	4	7	2	5	2
Hamilton	0	0	0	0	0	0
Herkimer	8	2	7	1	1	1
Jefferson	30	20	22	17	8	3
Lewis	2	2	2	2	0	0
Livingston	7	3	4	3	3	0
Madison	2	4	2	3	0	1
Monroe	563	225	261	140	302	85
Montgomery	27	12	20	12	7	0
Nassau	157	76	88	53	69	23
Niagara	129	57	61	41	68	16
Oneida	118	53	62	41	56	12
Onondaga	339	54	157	38	182	16
Ontario	4	3	1	3	3	0
Orange	81	18	41	10	40	8
Orleans	16	8	8	6	8	2
Oswego	36	22	24	20	12	2
Otsego	2	2	2	2	0	0
Putnam	1	1	1	1	0	0
Rensselaer	64	26	33	24	31	2
Rockland	32	11	20	8	12	3
St. Lawrence	35	26	19	22	16	4
Saratoga	0	0	0	0	0	0
Schenectady	195	35	110	27	85	8
Schoharie	2	4	2	3	0	1
Schuyler	3	2	2	1	1	1
Seneca	4	4	2	0	2	4
Steuben	11	6	6	6	5	0
Suffolk	73	63	41	43	32	20
Sullivan	14	1	7	0	7	1
Tioga	1	1	0	1	1	0
Tompkins	27	11	9	8	18	3
Ulster	52	23	30	17	22	6
Warren	0	5	0	5	0	0
Washington	3	2	3	2	0	0
Wayne	8	1	4	1	4	0
Westchester	57	70	24	44	33	26
Wyoming	4	1	3	1	1	0
Yates	1	1	1	1	0	0

* Statewide and New York City sanction rates are estimated from federal disaggregated reporting samples, which are the source of such data used by the United States Department of Health and Human Services to determine if a state has met participation goals. Because the sample size is insufficient to permit sanction estimates for non-New York City districts, data for those districts are derived directly from automated systems. Thus, Rest of State and New York City counts may not sum to the statewide total. This table uses a federal definition of sanction and includes only persons who are deemed a work eligible individual and are sanctioned for non-compliance for work or substance abuse requirements. Estimates are from first quarter Federal Fiscal Year 2015 samples.

Table 30
 TEMPORARY ASSISTANCE CASES WITH EARNED INCOME
 Cases, Average Gross Earned Income and Average Net Earned Income after Application of Disregards
 April 2015

Local District	TANF			Safety Net Assistance MOE			Safety Net Assistance Non-MOE		
	Cases	Average Gross Earned Income	Average Net Earned Income	Cases	Average Gross Earned Income	Average Net Earned Income	Cases	Average Gross Earned Income	Average Net Earned Income
New York State	15,171	\$952	\$445	10,937	\$978	\$454	9,720	\$1,216	\$740
New York City	9,896	1,015	483	8,043	1,005	470	6,935	1,334	853
Rest of State	5,275	833	375	2,894	905	412	2,785	925	458
Albany	127	814	366	89	851	383	72	1,203	562
Allegany	25	721	318	13	663	293	13	172	87
Broome	114	767	341	94	823	369	77	731	355
Cattaraugus	20	832	402	2	837	374	11	691	415
Cayuga	22	792	355	9	671	306	12	529	234
Chautauqua	128	814	376	70	839	378	62	768	376
Chemung	17	715	314	5	1,005	453	7	645	338
Chenango	12	745	328	2	481	200	12	481	272
Clinton	21	737	326	4	533	227	10	969	654
Columbia	26	803	360	5	863	479	13	1,073	576
Cortland	28	837	377	4	1,085	502	12	522	298
Delaware	7	583	247	0	0	0	10	432	200
Dutchess	37	999	513	19	1,048	483	10	653	356
Erie	649	840	375	441	926	422	537	1,123	524
Essex	2	1,014	469	0	0	0	2	163	55
Franklin	16	659	286	7	660	293	23	520	250
Fulton	3	826	378	0	0	0	2	134	44
Genesee	19	808	361	3	1,252	584	1	1,223	578
Greene	22	906	409	13	939	427	17	714	333
Hamilton	0	0	0	0	0	0	1	236	146
Herkimer	13	581	245	4	665	288	7	672	301
Jefferson	29	711	313	6	849	381	20	603	312
Lewis	3	427	169	1	260	87	2	272	182
Livingston	32	639	276	10	701	306	19	959	438
Madison	18	974	445	2	901	410	0	0	0
Monroe	717	822	370	573	935	425	304	787	395
Montgomery	44	757	336	10	933	424	10	749	365
Nassau	459	907	418	220	925	422	158	781	436
Niagara	146	700	307	79	847	387	55	800	373
Oneida	250	735	323	133	843	373	216	1,146	529
Onondaga	322	804	359	195	872	396	253	1,102	525
Ontario	40	705	310	15	823	370	14	858	498
Orange	175	929	422	137	914	415	70	908	447
Orleans	15	710	312	10	876	398	21	626	329
Oswego	56	713	315	12	832	372	46	719	339
Otsego	0	0	0	0	0	0	7	367	259
Putnam	10	721	318	0	0	0	5	212	122
Rensselaer	137	756	338	72	753	338	56	897	409
Rockland	159	913	405	21	885	402	64	1,162	568
St. Lawrence	57	659	314	21	745	365	51	554	262
Saratoga	4	1,067	496	0	0	0	4	556	376
Schenectady	110	845	379	56	946	432	44	1,004	552
Schoharie	11	775	355	0	0	0	4	884	446
Schuyler	6	595	256	6	1,022	472	8	587	251
Seneca	10	794	354	6	947	431	12	823	436
Steuben	44	646	281	23	802	375	25	670	326
Suffolk	470	970	449	260	1,033	481	214	994	583
Sullivan	24	635	273	15	888	400	7	731	491
Tioga	11	935	423	1	899	413	1	61	0
Tompkins	30	798	329	12	750	330	25	608	299
Ulster	118	715	313	40	709	307	65	737	382
Warren	6	577	246	0	0	0	2	369	324
Washington	10	830	375	2	1,084	497	3	522	224
Wayne	16	657	265	1	630	276	6	420	325
Westchester	419	900	408	169	935	424	79	823	427
Wyoming	6	686	298	1	1,613	761	1	259	169
Yates	3	772	343	1	303	107	3	557	236