





**Office of Temporary  
and Disability Assistance**

# **Temporary and Disability Assistance Statistics**



# Temporary and Disability Assistance Statistics

July 2021



## Temporary Assistance

	This Month	Change From Last Month	Change From Last Year
	<b>456,630</b>	<b>-5,378 (-1.2%)</b>	<b>-55,277 (-10.8%)</b>
	<b>\$154,388,000</b>	<b>-\$2.4 mil (-1.6%)</b>	<b>-\$23.0 mil (-13.0%)</b>

## Supplemental Nutrition Assistance Program

	This Month	Change From Last Month	Change From Last Year
	<b>2,798,640</b>	<b>-28,180 (-1.0%)</b>	<b>48,388 (1.8%)</b>
	<b>\$696,279,187</b>	<b>-\$30.3 mil (-4.2%)</b>	<b>\$202.6 mil (41.0%)</b>

## Supplemental Security Income

	This Month	Change From Last Month	Change From Last Year
	<b>634,466</b>	<b>-7,436 (-1.2%)</b>	<b>-28,742 (-4.3%)</b>
	<b>\$393,819,394</b>	<b>-\$11.0 mil (-2.7%)</b>	<b>-\$17.5 mil (-4.3%)</b>

Date Issued: September 29, 2021

# Table of Contents

## Ten Year Trend Graphs

Temporary Assistance Recipients	5
Supplemental Nutrition Assistance Program Recipients	5
Supplemental Security Income Recipients	5

## Temporary Assistance, SSI and SNAP Summary

<b>Table 1:</b>	Temporary Assistance, Family Assistance-FP, Safety Net Assistance, Supplemental Security Income and Supplemental Nutrition Assistance Program Cases by Region	6
<b>Table 2:</b>	Temporary Assistance, Family Assistance-FP, Safety Net Assistance, Supplemental Security Income and Supplemental Nutrition Assistance Program Recipients by Region	6
<b>Table 3:</b>	Temporary Assistance, Family Assistance-FP, Safety Net Assistance, Supplemental Security Income and Supplemental Nutrition Assistance Program Expenditures by Region	6

## Temporary Assistance by Program Area

<b>Table 4:</b>	Temporary Assistance Year to Year Monthly Comparison Cases, Recipients and Expenditures	7
<b>Table 5:</b>	Temporary Assistance Cases, Recipients, Children, Adults and Expenditures	8
<b>Table 6:</b>	Family Assistance-FP Cases, Recipients, Children, Adults and Expenditures	9
<b>Table 7:</b>	Safety Net Assistance Cases, Recipients, Children, Adults and Expenditures	10

## Temporary Assistance by Funding Source and Program Area

<b>Table 8:</b>	Temporary Assistance by Funding Source (Federally Participating and Federally Non-Participating) Cases, Recipients and Expenditures	11
<b>Table 9:</b>	Temporary Assistance for Needy Families-FP by Program (Family Assistance-FP and Safety Net Assistance-FP) Cases, Recipients, Children, Adults and Expenditures	12
<b>Table 10:</b>	Safety Net Assistance-FNP and Family Assistance-FNP Cases, Recipients, Children, Adults and Expenditures	13
<b>Table 11:</b>	Safety Net Assistance-FNP by Maintenance of Effort Status Cases, Recipients, Children, Adults and Expenditures	14
<b>Table 12:</b>	Safety Net Assistance-FNP-Cash Total Cases, Recipients, Children, Adults and Expenditures	15
<b>Table 13:</b>	Safety Net Assistance-FNP-Cash by Maintenance of Effort Status Cases, Recipients, Children, Adults and Expenditures	16
<b>Table 14:</b>	Safety Net Assistance-FNP-Non-Cash Total Cases, Recipients, Children, Adults and Expenditures	17
<b>Table 15:</b>	Safety Net Assistance-FNP-Non-Cash by Maintenance of Effort Status Cases, Recipients, Children, Adults and Expenditures	18

## Supplemental Nutrition Assistance Program

<b>Table 16:</b>	Supplemental Nutrition Assistance Program Households, Persons and Value of Supplemental Nutrition Assistance Program Benefits	19
------------------	---	----

## Supplemental Security Income

<b>Table 17:</b>	Supplemental Security Income Recipients, Total Program Expenditures and Federal and State Shares	20
<b>Table 18:</b>	Supplemental Security Income Recipients by Living Arrangement and Location	21
<b>Table 19:</b>	Supplemental Security Income Recipients by Living Arrangement and Category of Assistance	21

# Table of Contents

## Child Support

<b>Table 20:</b>	Child Support Collections (IV-D)	22
------------------	----------------------------------	----

## Aggregate Claims

<b>Table 21:</b>	Aggregate Claims - Total Temporary Assistance	23
<b>Table 22:</b>	Aggregate Claims - Federally Participating - TANF	24
<b>Table 23:</b>	Aggregate Claims - Federally Non-Participating Safety Net Assistance-FNP Maintenance of Effort	25
<b>Table 24:</b>	Aggregate Claims - Federally Non-Participating Safety Net Assistance-FNP and Family Assistance-FNP Non-Maintenance of Effort	26

## Home Energy Assistance Program

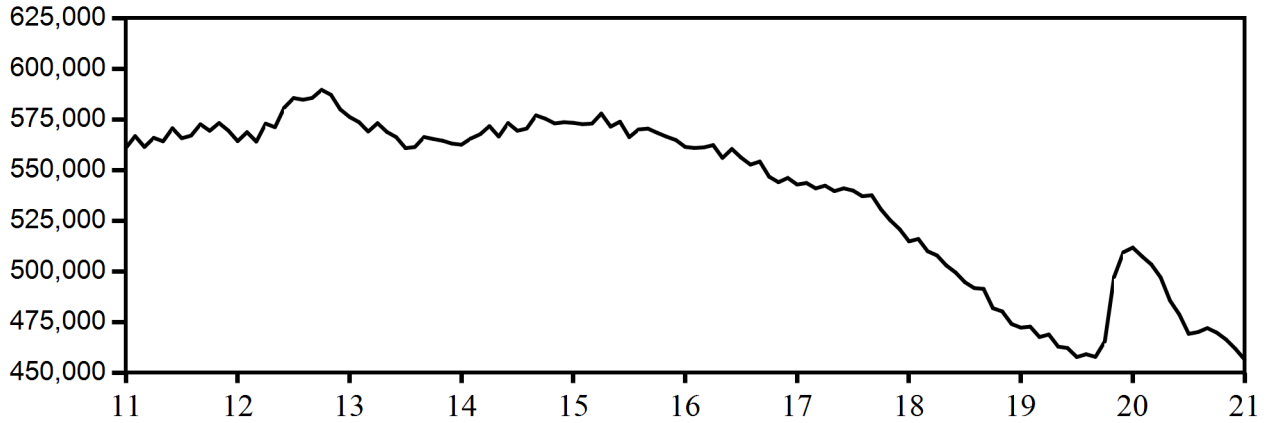
<b>Table 25:</b>	Home Energy Assistance Program Number and Dollar Amount of Benefits Authorized and Administrative Allocations	27
<b>Table 26:</b>	Home Energy Assistance Program - Non-Emergency Number, Total Dollar Amount and Average Dollar Amount of Benefits Authorized	28
<b>Table 27:</b>	Home Energy Assistance Program - Emergency Number, Total Dollar Amount and Average Dollar Amount of Benefits Authorized	29

## Welfare to Work Statistical Tables

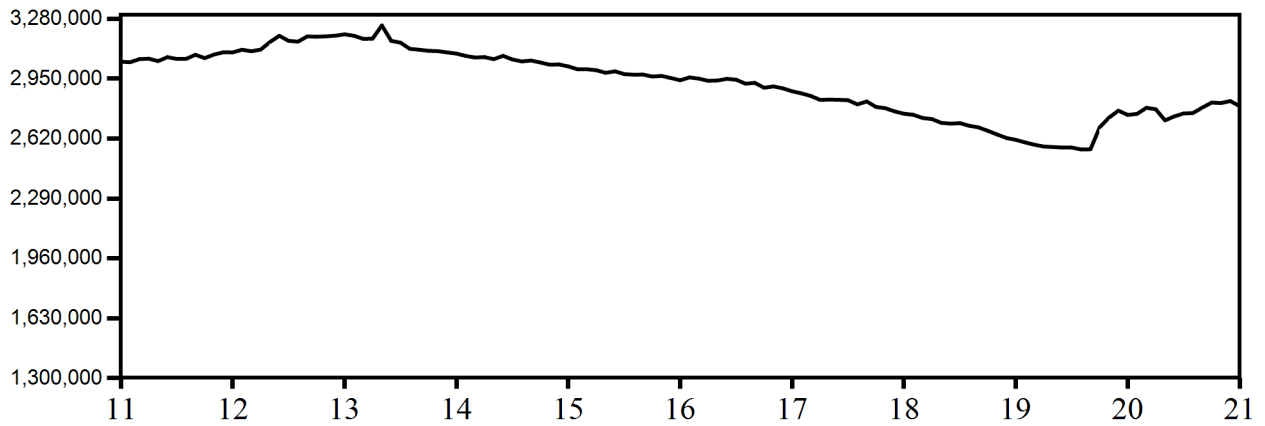
<b>Table 28:</b>	Federal All Families Work Participation Rates TANF, Safety Net Assistance MOE and Combined TANF and Safety Net Assistance MOE	30
<b>Table 29:</b>	Work Sanction Status by Presence in Federal All Families Work Participation Calculation TANF, Safety Net Assistance MOE and Combined TANF and Safety Net Assistance MOE	31
<b>Table 30:</b>	Temporary Assistance Cases with Earned Income Cases, Average Gross Earned Income and Average Net Earned Income after Application of Disregards	32

**NEW YORK STATE  
August 2011 - July 2021  
TEN YEAR TREND**

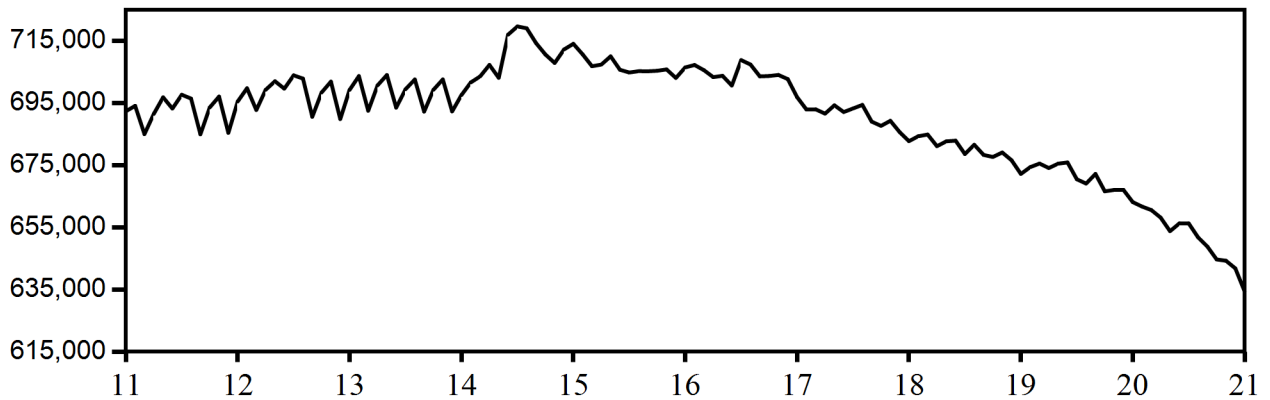
**Temporary Assistance Recipients**



**Supplemental Nutrition Assistance Program Recipients**



**Supplemental Security Income Recipients  
(Including Mental Hygiene)**



SELECTED SUMMARY PROGRAM DATA  
BY REGION

Table 1  
TEMPORARY AND DISABILITY ASSISTANCE CASES  
July 2021

Region	Cases				
	Temporary Assistance by Program			Supplemental Security Income	Supplemental Nutrition Assistance Program
	Total	Family Assistance-FP	Safety Net Assistance		
New York State	250,149	68,895	181,254	631,660	1,608,545
New York City	193,200	45,634	147,566	372,779	1,001,472
Rest of State	56,949	23,261	33,688	258,881	607,073

Table 2  
TEMPORARY AND DISABILITY ASSISTANCE RECIPIENTS  
July 2021

Region	Recipients				
	Temporary Assistance by Program			Supplemental Security Income	Supplemental Nutrition Assistance Program
	Total	Family Assistance-FP	Safety Net Assistance		
New York State	456,630	156,685	299,945	631,660	2,798,640
New York City	358,024	107,770	250,254	372,779	1,708,727
Rest of State	98,606	48,915	49,691	258,881	1,089,913

Table 3  
TEMPORARY AND DISABILITY ASSISTANCE EXPENDITURES  
July 2021

Region	Expenditures				
	Temporary Assistance by Program			Supplemental Security Income	Supplemental Nutrition Assistance Program
	Total	Family Assistance-FP	Safety Net Assistance		
New York State	\$154,388,000	\$43,438,793	\$110,949,207	\$392,313,492	\$696,279,187
New York City	112,898,643	26,370,499	86,528,144	232,426,148	432,142,995
Rest of State	41,489,357	17,068,294	24,421,063	159,887,344	264,136,192

Note: Supplemental Security Income data listed here do not include Mental Hygiene data. See Tables 17 - 19 for total Supplemental Security Income data.

Table 4  
**TEMPORARY ASSISTANCE**  
 Year to Year Monthly Comparison by Local District  
 Cases, Recipients and Expenditures  
 July 2021

Local District	July 2021			July 2020			July 2019		
	Cases	Recipients	Expenditures	Cases	Recipients	Expenditures	Cases	Recipients	Expenditures
New York State	250,149	456,630	\$154,388,000	281,941	511,907	\$177,410,687	256,120	472,409	\$171,832,700
New York City	193,200	358,024	112,898,643	207,275	378,171	123,114,560	176,038	322,790	114,590,144
Rest of State	56,949	98,606	41,489,357	74,666	133,736	54,296,127	80,082	149,619	57,242,556
Albany	1,176	2,047	669,785	1,941	3,494	1,697,305	2,143	4,169	1,717,791
Allegany	254	395	123,977	321	477	150,233	381	594	190,962
Broome	2,053	3,237	1,084,845	2,902	4,668	1,591,637	3,206	5,650	1,692,217
Cattaraugus	705	1,047	383,507	820	1,275	405,614	755	1,224	391,026
Cayuga	631	1,049	430,399	677	1,119	432,093	731	1,260	454,597
Chautauqua	1,572	3,007	830,569	1,855	3,537	911,684	1,794	3,418	909,758
Chemung	646	978	357,749	735	1,152	386,701	712	1,111	410,449
Chenango	294	432	149,914	285	416	138,281	296	461	137,825
Clinton	563	845	300,599	720	1,062	419,755	765	1,171	476,227
Columbia	291	442	301,376	365	621	313,749	419	727	354,627
Cortland	322	492	179,005	425	644	229,849	479	803	280,371
Delaware	155	242	72,192	185	271	94,934	198	293	112,086
Dutchess	927	1,448	986,273	1,258	2,006	1,390,667	1,197	1,976	1,198,617
Erie	8,025	15,393	3,772,967	10,105	20,260	4,937,209	11,007	23,047	5,631,882
Essex	86	122	49,799	101	140	60,696	129	203	74,196
Franklin	360	544	162,168	462	716	197,516	484	775	222,033
Fulton	199	303	99,583	215	327	118,720	217	326	120,495
Genesee	223	334	110,108	277	460	137,858	319	518	169,949
Greene	186	282	111,472	276	437	188,613	273	438	155,916
Hamilton	4	8	1,522	9	17	5,100	9	15	3,420
Herkimer	353	576	184,600	434	750	228,912	429	750	222,742
Jefferson	939	1,512	513,344	1,119	1,803	617,473	1,158	1,914	618,337
Lewis	82	114	38,435	94	147	38,406	96	139	47,141
Livingston	362	559	218,378	472	750	258,330	520	892	281,037
Madison	225	346	115,775	310	496	186,265	334	538	168,826
Monroe	6,194	10,962	3,531,485	8,517	16,049	4,676,711	8,952	17,616	4,926,430
Montgomery	330	620	161,142	385	741	206,922	460	937	275,980
Nassau	2,815	4,587	3,419,837	3,991	6,670	4,785,622	4,018	6,996	4,709,830
Niagara	1,383	2,242	699,923	1,837	3,098	878,273	2,126	3,768	982,076
Oneida	2,128	4,035	1,096,274	2,762	5,637	1,586,482	3,159	6,741	1,689,320
Onondaga	4,165	7,993	2,224,393	5,523	11,020	3,143,490	6,114	12,732	3,333,582
Ontario	619	919	396,043	731	1,102	509,082	791	1,233	517,137
Orange	1,255	2,214	1,100,479	1,854	3,332	1,779,547	1,978	3,578	1,710,739
Orleans	404	666	215,350	497	861	283,752	539	907	264,517
Oswego	1,076	1,921	606,892	1,328	2,420	719,511	1,436	2,750	775,332
Otsego	192	291	177,379	225	321	150,988	206	325	134,951
Putnam	59	78	37,225	83	116	94,799	79	102	74,032
Rensselaer	679	1,411	435,008	976	2,055	645,869	1,164	2,773	757,720
Rockland	574	976	369,966	866	1,535	582,882	919	1,637	729,018
St. Lawrence	648	1,083	331,742	865	1,460	457,540	970	1,785	464,876
Saratoga	306	417	181,178	455	631	315,537	429	597	257,914
Schenectady	1,009	1,815	552,186	1,263	2,421	797,656	1,458	2,949	885,854
Schoharie	111	163	80,197	120	187	79,069	145	244	88,264
Schuyler	109	155	60,095	134	205	62,439	164	275	105,955
Seneca	185	273	125,166	187	299	105,237	238	394	139,938
Steuben	708	1,050	406,141	941	1,415	620,932	831	1,329	447,238
Suffolk	4,698	7,748	6,350,741	6,337	10,655	9,146,652	6,993	12,207	10,218,659
Sullivan	470	785	263,921	609	1,076	402,365	667	1,098	405,298
Tioga	257	395	137,218	307	476	192,432	335	529	188,962
Tompkins	562	796	501,770	739	1,058	668,170	704	1,086	555,457
Ulster	725	1,193	965,795	941	1,549	929,020	976	1,582	777,976
Warren	206	285	138,191	256	353	231,475	276	395	233,224
Washington	288	457	161,250	343	579	224,128	343	563	205,138
Wayne	377	589	251,551	524	806	381,282	550	847	285,096
Westchester	3,503	6,313	5,092,601	4,394	8,127	4,319,401	4,717	8,817	4,898,943
Wyoming	138	209	78,705	155	206	84,414	172	246	93,214
Yates	143	211	91,172	158	231	96,848	122	169	67,359

Table 5  
**TEMPORARY ASSISTANCE**  
Cases, Recipients, Children, Adults and Expenditures by Local District  
July 2021

Local District	Temporary Assistance				
	Cases	Recipients	Children	Adults	Expenditures
New York State	250,149	456,630	208,865	247,765	\$154,388,000
New York City	193,200	358,024	153,487	204,537	112,898,643
Rest of State	56,949	98,606	55,378	43,228	41,489,357
Albany	1,176	2,047	1,322	725	669,785
Allegany	254	395	211	184	123,977
Broome	2,053	3,237	1,795	1,442	1,084,845
Cattaraugus	705	1,047	504	543	383,507
Cayuga	631	1,049	578	471	430,399
Chautauqua	1,572	3,007	1,764	1,243	830,569
Chemung	646	978	640	338	357,749
Chenango	294	432	264	168	149,914
Clinton	563	845	490	355	300,599
Columbia	291	442	240	202	301,376
Cortland	322	492	253	239	179,005
Delaware	155	242	144	98	72,192
Dutchess	927	1,448	787	661	986,273
Erie	8,025	15,393	8,785	6,608	3,772,967
Essex	86	122	81	41	49,799
Franklin	360	544	249	295	162,168
Fulton	199	303	178	125	99,583
Genesee	223	334	154	180	110,108
Greene	186	282	166	116	111,472
Hamilton	4	8	5	3	1,522
Herkimer	353	576	332	244	184,600
Jefferson	939	1,512	748	764	513,344
Lewis	82	114	70	44	38,435
Livingston	362	559	287	272	218,378
Madison	225	346	217	129	115,775
Monroe	6,194	10,962	6,441	4,521	3,531,485
Montgomery	330	620	363	257	161,142
Nassau	2,815	4,587	2,200	2,387	3,419,837
Niagara	1,383	2,242	1,314	928	699,923
Oneida	2,128	4,035	2,283	1,752	1,096,274
Onondaga	4,165	7,993	4,687	3,306	2,224,393
Ontario	619	919	482	437	396,043
Orange	1,255	2,214	1,283	931	1,100,479
Orleans	404	666	357	309	215,350
Oswego	1,076	1,921	1,097	824	606,892
Otsego	192	291	135	156	177,379
Putnam	59	78	52	26	37,225
Rensselaer	679	1,411	981	430	435,008
Rockland	574	976	535	441	369,966
St. Lawrence	648	1,083	585	498	331,742
Saratoga	306	417	256	161	181,178
Schenectady	1,009	1,815	1,138	677	552,186
Schoharie	111	163	101	62	80,197
Schuyler	109	155	85	70	60,095
Seneca	185	273	131	142	125,166
Steuben	708	1,050	526	524	406,141
Suffolk	4,698	7,748	3,873	3,875	6,350,741
Sullivan	470	785	462	323	263,921
Tioga	257	395	290	105	137,218
Tompkins	562	796	328	468	501,770
Ulster	725	1,193	644	549	965,795
Warren	206	285	147	138	138,191
Washington	288	457	267	190	161,250
Wayne	377	589	353	236	251,551
Westchester	3,503	6,313	3,488	2,825	5,092,601
Wyoming	138	209	109	100	78,705
Yates	143	211	121	90	91,172



Table 6  
**FAMILY ASSISTANCE-FP**  
Cases, Recipients, Children, Adults and Expenditures by Local District  
July 2021

Local District	Family Assistance-FP				
	Cases	Recipients	Children	Adults	Expenditures
New York State	68,895	156,685	114,130	42,555	\$43,438,793
New York City	45,634	107,770	74,431	33,339	26,370,499
Rest of State	23,261	48,915	39,699	9,216	17,068,294
Albany	605	1,183	1,026	157	350,399
Allegany	115	221	176	45	56,740
Broome	862	1,626	1,332	294	486,015
Cattaraugus	264	509	408	101	135,512
Cayuga	244	536	443	93	145,366
Chautauqua	717	1,676	1,301	375	401,915
Chemung	333	610	543	67	174,133
Chenango	153	272	239	33	77,782
Clinton	272	498	422	76	147,528
Columbia	121	233	195	38	94,865
Cortland	127	250	206	44	67,188
Delaware	92	167	129	38	41,953
Dutchess	394	814	663	151	391,664
Erie	3,196	7,238	5,631	1,607	1,733,631
Essex	50	81	74	7	24,512
Franklin	139	274	197	77	70,898
Fulton	87	161	140	21	43,699
Genesee	84	172	129	43	41,608
Greene	88	160	142	18	46,756
Hamilton	2	6	5	1	1,016
Herkimer	155	308	257	51	82,767
Jefferson	331	695	546	149	175,000
Lewis	36	63	57	6	18,312
Livingston	151	297	234	63	97,934
Madison	115	213	181	32	59,368
Monroe	2,791	5,933	4,810	1,123	1,691,932
Montgomery	140	295	241	54	70,590
Nassau	800	1,653	1,395	258	904,432
Niagara	636	1,237	1,041	196	325,645
Oneida	824	1,924	1,503	421	446,040
Onondaga	1,739	4,056	3,190	866	975,558
Ontario	259	480	392	88	138,647
Orange	506	1,064	885	179	442,969
Orleans	163	345	270	75	94,880
Oswego	488	1,028	818	210	271,177
Otsego	68	132	107	25	58,855
Putnam	30	47	46	1	19,167
Rensselaer	390	812	666	146	229,864
Rockland	217	465	391	74	136,442
St. Lawrence	257	502	408	94	129,933
Saratoga	147	243	221	22	72,335
Schenectady	459	959	832	127	258,926
Schoharie	64	107	92	15	39,542
Schuyler	40	69	65	4	19,861
Seneca	67	118	94	24	35,332
Steuben	277	534	445	89	158,963
Suffolk	1,539	3,214	2,596	618	2,343,984
Sullivan	206	411	352	59	112,714
Tioga	154	253	238	15	76,798
Tompkins	168	324	254	70	105,108
Ulster	286	566	465	101	376,578
Warren	83	146	130	16	45,150
Washington	148	286	235	51	84,792
Wayne	187	359	305	54	154,030
Westchester	1,263	2,842	2,334	508	2,205,121
Wyoming	60	115	93	22	30,517
Yates	72	133	109	24	45,851

Table 7  
SAFETY NET ASSISTANCE\*  
Cases, Recipients, Children, Adults and Expenditures by Local District  
July 2021

Local District	Safety Net Assistance				
	Cases	Recipients	Children	Adults	Expenditures
New York State	181,254	299,945	94,735	205,210	\$110,949,207
New York City	147,566	250,254	79,056	171,198	86,528,144
Rest of State	33,688	49,691	15,679	34,012	24,421,063
Albany	571	864	296	568	319,386
Allegany	139	174	35	139	67,237
Broome	1,191	1,611	463	1,148	598,830
Cattaraugus	441	538	96	442	247,995
Cayuga	387	513	135	378	285,033
Chautauqua	855	1,331	463	868	428,654
Chemung	313	368	97	271	183,616
Chenango	141	160	25	135	72,132
Clinton	291	347	68	279	153,071
Columbia	170	209	45	164	206,511
Cortland	195	242	47	195	111,817
Delaware	63	75	15	60	30,239
Dutchess	533	634	124	510	594,609
Erie	4,829	8,155	3,154	5,001	2,039,336
Essex	36	41	7	34	25,287
Franklin	221	270	52	218	91,270
Fulton	112	142	38	104	55,884
Genesee	139	162	25	137	68,500
Greene	98	122	24	98	64,716
Hamilton	2	2	0	2	506
Herkimer	198	268	75	193	101,833
Jefferson	608	817	202	615	338,344
Lewis	46	51	13	38	20,123
Livingston	211	262	53	209	120,444
Madison	110	133	36	97	56,407
Monroe	3,403	5,029	1,631	3,398	1,839,553
Montgomery	190	325	122	203	90,552
Nassau	2,015	2,934	805	2,129	2,515,405
Niagara	747	1,005	273	732	374,278
Oneida	1,304	2,111	780	1,331	650,234
Onondaga	2,426	3,937	1,497	2,440	1,248,835
Ontario	360	439	90	349	257,396
Orange	749	1,150	398	752	657,510
Orleans	241	321	87	234	120,470
Oswego	588	893	279	614	335,715
Otsego	124	159	28	131	118,524
Putnam	29	31	6	25	18,058
Rensselaer	289	599	315	284	205,144
Rockland	357	511	144	367	233,524
St. Lawrence	391	581	177	404	201,809
Saratoga	159	174	35	139	108,843
Schenectady	550	856	306	550	293,260
Schoharie	47	56	9	47	40,655
Schuyler	69	86	20	66	40,234
Seneca	118	155	37	118	89,834
Steuben	431	516	81	435	247,178
Suffolk	3,159	4,534	1,277	3,257	4,006,757
Sullivan	264	374	110	264	151,207
Tioga	103	142	52	90	60,420
Tompkins	394	472	74	398	396,662
Ulster	439	627	179	448	589,217
Warren	123	139	17	122	93,041
Washington	140	171	32	139	76,458
Wayne	190	230	48	182	97,521
Westchester	2,240	3,471	1,154	2,317	2,887,480
Wyoming	78	94	16	78	48,188
Yates	71	78	12	66	45,321

\* Includes Federally Non-Participating Family Assistance cases (non-disabled two-parent Family Assistance cases).

Table 8  
**TEMPORARY ASSISTANCE BY FUNDING SOURCE**  
 Cases, Recipients, and Expenditures by Local District  
 July 2021

Local District	Total			Federally Participating-TANF Family Assistance-FP and Safety Net Assistance-FP			Federally Non-Participating Safety Net Assistance-FNP and Family Assistance-FNP		
	Cases	Recipients	Expenditures	Cases	Recipients	Expenditures	Cases	Recipients	Expenditures
New York State	250,149	456,630	\$154,388,000	69,254	157,595	\$43,743,929	180,895	299,035	\$110,644,071
New York City	193,200	358,024	112,898,643	45,668	107,838	26,386,956	147,532	250,186	86,511,687
Rest of State	56,949	98,606	41,489,357	23,586	49,757	17,356,973	33,363	48,849	24,132,384
Albany	1,176	2,047	669,785	609	1,192	354,543	567	855	315,242
Allegany	254	395	123,977	117	224	58,396	137	171	65,581
Broome	2,053	3,237	1,084,845	874	1,658	492,925	1,179	1,579	591,920
Cattaraugus	705	1,047	383,507	283	556	145,273	422	491	238,234
Cayuga	631	1,049	430,399	254	564	153,050	377	485	277,349
Chautauqua	1,572	3,007	830,569	723	1,693	405,776	849	1,314	424,793
Chemung	646	978	357,749	336	617	175,649	310	361	182,100
Chenango	294	432	149,914	155	275	78,264	139	157	71,650
Clinton	563	845	300,599	274	502	148,469	289	343	152,130
Columbia	291	442	301,376	124	238	98,332	167	204	203,044
Cortland	322	492	179,005	133	270	72,563	189	222	106,442
Delaware	155	242	72,192	92	167	41,953	63	75	30,239
Dutchess	927	1,448	986,273	402	834	420,145	525	614	566,128
Erie	8,025	15,393	3,772,967	3,231	7,315	1,757,091	4,794	8,078	2,015,876
Essex	86	122	49,799	50	81	24,512	36	41	25,287
Franklin	360	544	162,168	140	276	71,260	220	268	90,908
Fulton	199	303	99,583	91	173	46,215	108	130	53,368
Genesee	223	334	110,108	85	174	42,133	138	160	67,975
Greene	186	282	111,472	91	168	47,767	95	114	63,705
Hamilton	4	8	1,522	2	6	1,016	2	2	506
Herkimer	353	576	184,600	159	318	93,919	194	258	90,681
Jefferson	939	1,512	513,344	343	723	180,149	596	789	333,195
Lewis	82	114	38,435	36	63	18,312	46	51	20,123
Livingston	362	559	218,378	154	303	98,860	208	256	119,518
Madison	225	346	115,775	117	218	60,278	108	128	55,497
Monroe	6,194	10,962	3,531,485	2,848	6,092	1,724,580	3,346	4,870	1,806,905
Montgomery	330	620	161,142	144	309	73,315	186	311	87,827
Nassau	2,815	4,587	3,419,837	801	1,656	904,638	2,014	2,931	2,515,199
Niagara	1,383	2,242	699,923	656	1,289	339,656	727	953	360,267
Oneida	2,128	4,035	1,096,274	833	1,955	452,978	1,295	2,080	643,296
Onondaga	4,165	7,993	2,224,393	1,740	4,058	977,388	2,425	3,935	1,247,005
Ontario	619	919	396,043	260	484	139,456	359	435	256,587
Orange	1,255	2,214	1,100,479	512	1,081	467,398	743	1,133	633,081
Orleans	404	666	215,350	164	350	94,920	240	316	120,430
Oswego	1,076	1,921	606,892	498	1,053	277,206	578	868	329,686
Otsego	192	291	177,379	72	144	61,815	120	147	115,564
Putnam	59	78	37,225	31	48	19,350	28	30	17,875
Rensselaer	679	1,411	435,008	393	821	233,825	286	590	201,183
Rockland	574	976	369,966	220	475	140,092	354	501	229,874
St. Lawrence	648	1,083	331,742	259	506	130,984	389	577	200,758
Saratoga	306	417	181,178	149	247	73,559	157	170	107,619
Schenectady	1,009	1,815	552,186	464	970	260,939	545	845	291,247
Schoharie	111	163	80,197	64	107	39,542	47	56	40,655
Schuyler	109	155	60,095	41	71	20,251	68	84	39,844
Seneca	185	273	125,166	67	118	35,332	118	155	89,834
Steuben	708	1,050	406,141	277	534	158,963	431	516	247,178
Suffolk	4,698	7,748	6,350,741	1,557	3,255	2,371,768	3,141	4,493	3,978,973
Sullivan	470	785	263,921	208	417	113,474	262	368	150,447
Tioga	257	395	137,218	157	262	78,488	100	133	58,730
Tompkins	562	796	501,770	173	332	107,818	389	464	393,952
Ulster	725	1,193	965,795	287	568	384,568	438	625	581,227
Warren	206	285	138,191	85	153	49,627	121	132	88,564
Washington	288	457	161,250	150	290	86,332	138	167	74,918
Wayne	377	589	251,551	196	388	161,890	181	201	89,661
Westchester	3,503	6,313	5,092,601	1,268	2,858	2,209,575	2,235	3,455	2,883,026
Wyoming	138	209	78,705	65	125	34,545	73	84	44,160
Yates	143	211	91,172	72	133	45,851	71	78	45,321

Table 9  
 TEMPORARY ASSISTANCE FOR NEEDY FAMILIES-FP BY PROGRAM  
 Cases, Recipients, Children, Adults and Expenditures by Local District  
 July 2021

Local District	Family Assistance-FP					Safety Net Assistance-FP				
	Cases	Recipients	Children	Adults	Expenditures	Cases	Recipients	Children	Adults	Expenditures
New York State	68,895	156,685	114,130	42,555	\$43,438,793	359	910	519	391	\$305,136
New York City	45,634	107,770	74,431	33,339	26,370,499	34	68	42	26	16,457
Rest of State	23,261	48,915	39,699	9,216	17,068,294	325	842	477	365	288,679
Albany	605	1,183	1,026	157	350,399	4	9	5	4	4,144
Allegany	115	221	176	45	56,740	2	3	1	2	1,656
Broome	862	1,626	1,332	294	486,015	12	32	19	13	6,910
Cattaraugus	264	509	408	101	135,512	19	47	26	21	9,761
Cayuga	244	536	443	93	145,366	10	28	16	12	7,684
Chautauqua	717	1,676	1,301	375	401,915	6	17	11	6	3,861
Chemung	333	610	543	67	174,133	3	7	3	4	1,516
Chenango	153	272	239	33	77,782	2	3	1	2	482
Clinton	272	498	422	76	147,528	2	4	2	2	941
Columbia	121	233	195	38	94,865	3	5	2	3	3,467
Cortland	127	250	206	44	67,188	6	20	13	7	5,375
Delaware	92	167	129	38	41,953	0	0	0	0	0
Dutchess	394	814	663	151	391,664	8	20	12	8	28,481
Erie	3,196	7,238	5,631	1,607	1,733,631	35	77	41	36	23,460
Essex	50	81	74	7	24,512	0	0	0	0	0
Franklin	139	274	197	77	70,898	1	2	1	1	362
Fulton	87	161	140	21	43,699	4	12	8	4	2,516
Genesee	84	172	129	43	41,608	1	2	1	1	525
Greene	88	160	142	18	46,756	3	8	5	3	1,011
Hamilton	2	6	5	1	1,016	0	0	0	0	0
Herkimer	155	308	257	51	82,767	4	10	6	4	11,152
Jefferson	331	695	546	149	175,000	12	28	16	12	5,149
Lewis	36	63	57	6	18,312	0	0	0	0	0
Livingston	151	297	234	63	97,934	3	6	3	3	926
Madison	115	213	181	32	59,368	2	5	3	2	910
Monroe	2,791	5,933	4,810	1,123	1,691,932	57	159	95	64	32,648
Montgomery	140	295	241	54	70,590	4	14	7	7	2,725
Nassau	800	1,653	1,395	258	904,432	1	3	1	2	206
Niagara	636	1,237	1,041	196	325,645	20	52	32	20	14,011
Oneida	824	1,924	1,503	421	446,040	9	31	18	13	6,938
Onondaga	1,739	4,056	3,190	866	975,558	1	2	1	1	1,830
Ontario	259	480	392	88	138,647	1	4	2	2	809
Orange	506	1,064	885	179	442,969	6	17	10	7	24,429
Orleans	163	345	270	75	94,880	1	5	3	2	40
Oswego	488	1,028	818	210	271,177	10	25	13	12	6,029
Otsego	68	132	107	25	58,855	4	12	6	6	2,960
Putnam	30	47	46	1	19,167	1	1	0	1	183
Rensselaer	390	812	666	146	229,864	3	9	4	5	3,961
Rockland	217	465	391	74	136,442	3	10	6	4	3,650
St. Lawrence	257	502	408	94	129,933	2	4	2	2	1,051
Saratoga	147	243	221	22	72,335	2	4	2	2	1,224
Schenectady	459	959	832	127	258,926	5	11	5	6	2,013
Schoharie	64	107	92	15	39,542	0	0	0	0	0
Schuyler	40	69	65	4	19,861	1	2	1	1	390
Seneca	67	118	94	24	35,332	0	0	0	0	0
Steuben	277	534	445	89	158,963	0	0	0	0	0
Suffolk	1,539	3,214	2,596	618	2,343,984	18	41	23	18	27,784
Sullivan	206	411	352	59	112,714	2	6	4	2	760
Tioga	154	253	238	15	76,798	3	9	5	4	1,690
Tompkins	168	324	254	70	105,108	5	8	3	5	2,710
Ulster	286	566	465	101	376,578	1	2	1	1	7,990
Warren	83	146	130	16	45,150	2	7	4	3	4,477
Washington	148	286	235	51	84,792	2	4	2	2	1,540
Wayne	187	359	305	54	154,030	9	29	18	11	7,860
Westchester	1,263	2,842	2,334	508	2,205,121	5	16	9	7	4,454
Wyoming	60	115	93	22	30,517	5	10	5	5	4,028
Yates	72	133	109	24	45,851	0	0	0	0	0

Table 10  
SAFETY NET ASSISTANCE-FNP AND FAMILY ASSISTANCE-FNP  
Cases, Recipients, Children, Adults and Expenditures by Local District  
July 2021

Local District	Safety Net Assistance-FNP and Family Assistance-FNP				
	Cases	Recipients	Children	Adults	Expenditures
New York State	180,895	299,035	94,216	204,819	\$110,644,071
New York City	147,532	250,186	79,014	171,172	86,511,687
Rest of State	33,363	48,849	15,202	33,647	24,132,384
Albany	567	855	291	564	315,242
Allegany	137	171	34	137	65,581
Broome	1,179	1,579	444	1,135	591,920
Cattaraugus	422	491	70	421	238,234
Cayuga	377	485	119	366	277,349
Chautauqua	849	1,314	452	862	424,793
Chemung	310	361	94	267	182,100
Chenango	139	157	24	133	71,650
Clinton	289	343	66	277	152,130
Columbia	167	204	43	161	203,044
Cortland	189	222	34	188	106,442
Delaware	63	75	15	60	30,239
Dutchess	525	614	112	502	566,128
Erie	4,794	8,078	3,113	4,965	2,015,876
Essex	36	41	7	34	25,287
Franklin	220	268	51	217	90,908
Fulton	108	130	30	100	53,368
Genesee	138	160	24	136	67,975
Greene	95	114	19	95	63,705
Hamilton	2	2	0	2	506
Herkimer	194	258	69	189	90,681
Jefferson	596	789	186	603	333,195
Lewis	46	51	13	38	20,123
Livingston	208	256	50	206	119,518
Madison	108	128	33	95	55,497
Monroe	3,346	4,870	1,536	3,334	1,806,905
Montgomery	186	311	115	196	87,827
Nassau	2,014	2,931	804	2,127	2,515,199
Niagara	727	953	241	712	360,267
Oneida	1,295	2,080	762	1,318	643,296
Onondaga	2,425	3,935	1,496	2,439	1,247,005
Ontario	359	435	88	347	256,587
Orange	743	1,133	388	745	633,081
Orleans	240	316	84	232	120,430
Oswego	578	868	266	602	329,686
Otsego	120	147	22	125	115,564
Putnam	28	30	6	24	17,875
Rensselaer	286	590	311	279	201,183
Rockland	354	501	138	363	229,874
St. Lawrence	389	577	175	402	200,758
Saratoga	157	170	33	137	107,619
Schenectady	545	845	301	544	291,247
Schoharie	47	56	9	47	40,655
Schuyler	68	84	19	65	39,844
Seneca	118	155	37	118	89,834
Steuben	431	516	81	435	247,178
Suffolk	3,141	4,493	1,254	3,239	3,978,973
Sullivan	262	368	106	262	150,447
Tioga	100	133	47	86	58,730
Tompkins	389	464	71	393	393,952
Ulster	438	625	178	447	581,227
Warren	121	132	13	119	88,564
Washington	138	167	30	137	74,918
Wayne	181	201	30	171	89,661
Westchester	2,235	3,455	1,145	2,310	2,883,026
Wyoming	73	84	11	73	44,160
Yates	71	78	12	66	45,321

Table 11  
**SAFETY NET ASSISTANCE-FNP BY MAINTENANCE OF EFFORT STATUS**  
 Maintenance of Effort (MOE) vs. Non-Maintenance of Effort (Non-MOE)  
 Cases, Recipients, Children, Adults and Expenditures by Local District  
 July 2021

Local District	Maintenance of Effort (MOE)					Non-Maintenance of Effort (Non-MOE)*				
	Cases	Recipients	Children	Adults	Expenditures	Cases	Recipients	Children	Adults	Expenditures
New York State	32,558	108,726	68,370	40,356	\$24,174,140	148,337	190,309	25,846	164,463	\$86,469,931
New York City	28,164	92,961	57,182	35,779	19,521,745	119,368	157,225	21,832	135,393	66,989,942
Rest of State	4,394	15,765	11,188	4,577	4,652,395	28,969	33,084	4,014	29,070	19,479,989
Albany	75	265	187	78	44,495	492	590	104	486	270,747
Allegany	8	23	15	8	3,682	129	148	19	129	61,899
Broome	129	447	309	138	83,185	1,050	1,132	135	997	508,735
Cattaraugus	17	56	38	18	11,324	405	435	32	403	226,910
Cayuga	30	99	68	31	26,279	347	386	51	335	251,070
Chautauqua	128	442	305	137	76,564	721	872	147	725	348,229
Chemung	11	43	32	11	8,351	299	318	62	256	173,749
Chenango	5	19	15	4	2,115	134	138	9	129	69,535
Clinton	19	60	40	20	13,389	270	283	26	257	138,741
Columbia	13	43	30	13	9,163	154	161	13	148	193,881
Cortland	9	32	22	10	5,834	180	190	12	178	100,608
Delaware	4	14	10	4	2,941	59	61	5	56	27,298
Dutchess	30	94	64	30	31,968	495	520	48	472	534,160
Erie	813	3,132	2,292	840	475,665	3,981	4,946	821	4,125	1,540,211
Essex	3	7	4	3	1,469	33	34	3	31	23,818
Franklin	12	43	32	11	6,855	208	225	19	206	84,053
Fulton	5	17	12	5	2,253	103	113	18	95	51,115
Genesee	11	33	23	10	6,469	127	127	1	126	61,506
Greene	6	18	13	5	3,112	89	96	6	90	60,593
Hamilton	0	0	0	0	0	2	2	0	2	506
Herkimer	14	53	42	11	9,015	180	205	27	178	81,666
Jefferson	54	179	120	59	32,098	542	610	66	544	301,097
Lewis	0	0	0	0	0	46	51	13	38	20,123
Livingston	14	38	24	14	8,944	194	218	26	192	110,574
Madison	9	25	18	7	5,587	99	103	15	88	49,910
Monroe	495	1,751	1,245	506	289,587	2,851	3,119	291	2,828	1,517,318
Montgomery	34	122	89	33	20,079	152	189	26	163	67,748
Nassau	235	818	579	239	490,034	1,779	2,113	225	1,888	2,025,165
Niagara	66	239	166	73	42,478	661	714	75	639	317,789
Oneida	206	814	594	220	115,346	1,089	1,266	168	1,098	527,950
Onondaga	430	1,611	1,160	451	285,831	1,995	2,324	336	1,988	961,174
Ontario	21	67	46	21	18,203	338	368	42	326	238,384
Orange	132	463	327	136	140,979	611	670	61	609	492,102
Orleans	18	60	39	21	20,116	222	256	45	211	100,314
Oswego	65	218	150	68	42,213	513	650	116	534	287,473
Otsego	5	23	18	5	5,139	115	124	4	120	110,425
Putnam	0	0	0	0	0	28	30	6	24	17,875
Rensselaer	93	346	254	92	56,378	193	244	57	187	144,805
Rockland	22	71	48	23	10,686	332	430	90	340	219,188
St. Lawrence	54	186	131	55	35,411	335	391	44	347	165,347
Saratoga	2	11	8	3	1,071	155	159	25	134	106,548
Schenectady	82	304	218	86	50,945	463	541	83	458	240,302
Schoharie	2	8	6	2	1,754	45	48	3	45	38,901
Schuyler	4	15	10	5	3,547	64	69	9	60	36,297
Seneca	11	37	24	13	7,524	107	118	13	105	82,310
Steuben	25	87	57	30	14,759	406	429	24	405	232,419
Suffolk	380	1,410	1,002	408	894,684	2,761	3,083	252	2,831	3,084,289
Sullivan	28	105	74	31	17,014	234	263	32	231	133,433
Tioga	8	34	24	10	5,486	92	99	23	76	53,244
Tompkins	22	65	38	27	18,825	367	399	33	366	375,127
Ulster	58	180	116	64	105,384	380	445	62	383	475,843
Warren	4	11	7	4	2,184	117	121	6	115	86,380
Washington	4	13	10	3	3,025	134	154	20	134	71,893
Wayne	10	27	18	9	5,989	171	174	12	162	83,672
Westchester	456	1,479	1,009	470	1,073,412	1,779	1,976	136	1,840	1,809,614
Wyoming	1	3	2	1	668	72	81	9	72	43,492
Yates	2	5	4	1	2,887	69	73	8	65	42,434

\* The Non-MOE category includes otherwise Temporary Assistance for Needy Families eligible or otherwise Safety Net Assistance MOE eligible non-disabled two-parent cases.

Table 12  
**SAFETY NET ASSISTANCE-FNP-CASH TOTAL\***  
Cases, Recipients, Children, Adults and Expenditures by Local District  
July 2021

Local District	Safety Net Assistance-FNP Cash Total				
	Cases	Recipients	Children	Adults	Expenditures
New York State	See Note	See Note	See Note	See Note	See Note
New York City	See Note	See Note	See Note	See Note	See Note
Rest of State	20,462	24,929	4,375	20,554	\$13,295,187
Albany	301	401	107	294	167,053
Allegany	100	111	12	99	40,971
Broome	685	812	144	668	322,359
Cattaraugus	270	311	37	274	147,141
Cayuga	254	289	50	239	152,013
Chautauqua	547	720	172	548	250,207
Chemung	237	255	44	211	129,572
Chenango	112	116	9	107	54,132
Clinton	180	201	26	175	89,511
Columbia	105	108	9	99	128,853
Cortland	130	150	22	128	70,413
Delaware	48	51	5	46	19,850
Dutchess	366	414	58	356	402,923
Erie	3,017	3,989	871	3,118	1,182,085
Essex	28	32	5	27	21,691
Franklin	167	176	10	166	64,116
Fulton	72	82	18	64	31,600
Genesee	103	106	5	101	44,688
Greene	54	59	4	55	32,653
Hamilton	2	2	0	2	506
Herkimer	128	146	17	129	51,848
Jefferson	337	418	73	345	185,515
Lewis	28	32	5	27	11,922
Livingston	147	174	28	146	80,657
Madison	75	84	15	69	36,978
Monroe	1,948	2,380	462	1,918	1,023,980
Montgomery	79	100	16	84	28,877
Nassau	1,214	1,397	114	1,283	1,311,894
Niagara	455	522	80	442	205,721
Oneida	886	1,141	240	901	424,392
Onondaga	1,754	2,447	686	1,761	843,804
Ontario	196	211	18	193	136,192
Orange	396	464	75	389	310,098
Orleans	183	209	35	174	80,788
Oswego	389	521	115	406	227,484
Otsego	95	104	3	101	94,768
Putnam	18	20	5	15	9,921
Rensselaer	156	181	37	144	110,242
Rockland	156	174	17	157	113,896
St. Lawrence	189	245	43	202	95,012
Saratoga	129	138	29	109	73,824
Schenectady	312	377	78	299	152,418
Schoharie	38	41	2	39	31,922
Schuyler	51	56	9	47	31,176
Seneca	70	84	14	70	54,137
Steuben	330	360	27	333	183,386
Suffolk	2,096	2,451	297	2,154	2,304,996
Sullivan	151	185	36	149	78,475
Tioga	71	78	23	55	31,669
Tompkins	247	274	17	257	241,903
Ulster	223	263	42	221	325,410
Warren	86	93	10	83	57,674
Washington	99	108	8	100	53,508
Wayne	107	115	11	104	52,702
Westchester	758	861	73	788	829,996
Wyoming	41	41	1	40	24,802
Yates	46	49	6	43	30,863

Note: A breakout of Safety Net Assistance-FNP-Cash and Safety Net Assistance-FNP-Non-Cash data is not available for New York City.

\* May include otherwise Temporary Assistance for Needy Families eligible or otherwise Safety Net Assistance MOE eligible non-disabled two-parent cases.

Table 13  
**SAFETY NET ASSISTANCE-FNP-CASH BY MAINTENANCE OF EFFORT STATUS**  
Maintenance of Effort (MOE) vs. Non-Maintenance of Effort (Non-MOE)  
Cases, Recipients, Children, Adults and Expenditures by Local District  
July 2021

Local District	Maintenance of Effort (MOE)					Non-Maintenance of Effort (Non-MOE)*				
	Cases	Recipients	Children	Adults	Expenditures	Cases	Recipients	Children	Adults	Expenditures
New York State	See Note	See Note	See Note	See Note	See Note	See Note	See Note	See Note	See Note	See Note
New York City	See Note	See Note	See Note	See Note	See Note	See Note	See Note	See Note	See Note	See Note
Rest of State	835	2,693	1,766	927	\$626,637	19,627	22,236	2,609	19,627	\$12,668,550
Albany	13	36	21	15	5,827	288	365	86	279	161,226
Allegany	0	0	0	0	0	100	111	12	99	40,971
Broome	35	108	68	40	22,673	650	704	76	628	299,686
Cattaraugus	8	22	13	9	4,805	262	289	24	265	142,336
Cayuga	4	12	8	4	2,474	250	277	42	235	149,539
Chautauqua	32	95	57	38	15,902	515	625	115	510	234,305
Chemung	2	9	8	1	1,545	235	246	36	210	128,027
Chenango	0	0	0	0	0	112	116	9	107	54,132
Clinton	6	21	14	7	3,763	174	180	12	168	85,748
Columbia	1	2	1	1	512	104	106	8	98	128,341
Cortland	4	16	11	5	3,648	126	134	11	123	66,765
Delaware	1	2	1	1	581	47	49	4	45	19,269
Dutchess	19	51	32	19	18,550	347	363	26	337	384,373
Erie	149	483	326	157	91,792	2,868	3,506	545	2,961	1,090,293
Essex	2	5	3	2	947	26	27	2	25	20,744
Franklin	0	0	0	0	0	167	176	10	166	64,116
Fulton	0	0	0	0	0	72	82	18	64	31,600
Genesee	4	7	4	3	1,912	99	99	1	98	42,776
Greene	0	0	0	0	0	54	59	4	55	32,653
Hamilton	0	0	0	0	0	2	2	0	2	506
Herkimer	1	1	1	0	491	127	145	16	129	51,357
Jefferson	14	49	32	17	9,032	323	369	41	328	176,483
Lewis	0	0	0	0	0	28	32	5	27	11,922
Livingston	6	14	8	6	3,483	141	160	20	140	77,174
Madison	5	13	8	5	3,809	70	71	7	64	33,169
Monroe	100	331	226	105	55,930	1,848	2,049	236	1,813	968,050
Montgomery	2	12	9	3	512	77	88	7	81	28,365
Nassau	19	57	37	20	30,709	1,195	1,340	77	1,263	1,281,185
Niagara	10	37	24	13	6,238	445	485	56	429	199,483
Oneida	49	185	122	63	28,973	837	956	118	838	395,419
Onondaga	173	602	408	194	124,765	1,581	1,845	278	1,567	719,039
Ontario	1	1	0	1	370	195	210	18	192	135,822
Orange	20	54	34	20	15,349	376	410	41	369	294,749
Orleans	2	3	1	2	760	181	206	34	172	80,028
Oswego	16	55	36	19	10,383	373	466	79	387	217,101
Otsego	0	0	0	0	0	95	104	3	101	94,768
Putnam	0	0	0	0	0	18	20	5	15	9,921
Rensselaer	0	0	0	0	0	156	181	37	144	110,242
Rockland	2	7	5	2	1,446	154	167	12	155	112,450
St. Lawrence	9	28	19	9	4,775	180	217	24	193	90,237
Saratoga	1	6	4	2	200	128	132	25	107	73,624
Schenectady	8	24	16	8	5,385	304	353	62	291	147,033
Schoharie	0	0	0	0	0	38	41	2	39	31,922
Schuyler	1	1	0	1	1,028	50	55	9	46	30,148
Seneca	2	6	4	2	1,438	68	78	10	68	52,699
Steuben	10	27	14	13	5,400	320	333	13	320	177,986
Suffolk	68	228	147	81	105,654	2,028	2,223	150	2,073	2,199,342
Sullivan	3	8	4	4	2,069	148	177	32	145	76,406
Tioga	0	0	0	0	0	71	78	23	55	31,669
Tompkins	5	13	7	6	3,182	242	261	10	251	238,721
Ulster	2	6	4	2	7,551	221	257	38	219	317,859
Warren	1	5	4	1	778	85	88	6	82	56,896
Washington	0	0	0	0	0	99	108	8	100	53,508
Wayne	3	10	7	3	2,065	104	105	4	101	50,637
Westchester	21	40	18	22	17,977	737	821	55	766	812,019
Wyoming	0	0	0	0	0	41	41	1	40	24,802
Yates	1	1	0	1	1,954	45	48	6	42	28,909

Note: A breakout of Safety Net Assistance-FNP-Cash and Safety Net Assistance-FNP-Non-Cash data is not available for New York City.  
\* The Non-MOE category includes otherwise Temporary Assistance for Needy Families eligible or otherwise Safety Net Assistance MOE eligible non-disabled two-parent cases.



Table 14  
**SAFETY NET ASSISTANCE-FNP-NON-CASH TOTAL\***  
Cases, Recipients, Children, Adults and Expenditures by Local District  
July 2021

Local District	Safety Net Assistance-FNP-Non-Cash Total				
	Cases	Recipients	Children	Adults	Expenditures
New York State	See Note	See Note	See Note	See Note	See Note
New York City	See Note	See Note	See Note	See Note	See Note
Rest of State	12,901	23,920	10,827	13,093	\$10,837,197
Albany	266	454	184	270	148,189
Allegany	37	60	22	38	24,610
Broome	494	767	300	467	269,561
Cattaraugus	152	180	33	147	91,093
Cayuga	123	196	69	127	125,336
Chautauqua	302	594	280	314	174,586
Chemung	73	106	50	56	52,528
Chenango	27	41	15	26	17,518
Clinton	109	142	40	102	62,619
Columbia	62	96	34	62	74,191
Cortland	59	72	12	60	36,029
Delaware	15	24	10	14	10,389
Dutchess	159	200	54	146	163,205
Erie	1,777	4,089	2,242	1,847	833,791
Essex	8	9	2	7	3,596
Franklin	53	92	41	51	26,792
Fulton	36	48	12	36	21,768
Genesee	35	54	19	35	23,287
Greene	41	55	15	40	31,052
Hamilton	0	0	0	0	0
Herkimer	66	112	52	60	38,833
Jefferson	259	371	113	258	147,680
Lewis	18	19	8	11	8,201
Livingston	61	82	22	60	38,861
Madison	33	44	18	26	18,519
Monroe	1,398	2,490	1,074	1,416	782,925
Montgomery	107	211	99	112	58,950
Nassau	800	1,534	690	844	1,203,305
Niagara	272	431	161	270	154,546
Oneida	409	939	522	417	218,904
Onondaga	671	1,488	810	678	403,201
Ontario	163	224	70	154	120,395
Orange	347	669	313	356	322,983
Orleans	57	107	49	58	39,642
Oswego	189	347	151	196	102,202
Otsego	25	43	19	24	20,796
Putnam	10	10	1	9	7,954
Rensselaer	130	409	274	135	90,941
Rockland	198	327	121	206	115,978
St. Lawrence	200	332	132	200	105,746
Saratoga	28	32	4	28	33,795
Schenectady	233	468	223	245	138,829
Schoharie	9	15	7	8	8,733
Schuyler	17	28	10	18	8,668
Seneca	48	71	23	48	35,697
Steuben	101	156	54	102	63,792
Suffolk	1,045	2,042	957	1,085	1,673,977
Sullivan	111	183	70	113	71,972
Tioga	29	55	24	31	27,061
Tompkins	142	190	54	136	152,049
Ulster	215	362	136	226	255,817
Warren	35	39	3	36	30,890
Washington	39	59	22	37	21,410
Wayne	74	86	19	67	36,959
Westchester	1,477	2,594	1,072	1,522	2,053,030
Wyoming	32	43	10	33	19,358
Yates	25	29	6	23	14,458

Note: A breakout of Safety Net Assistance-FNP-Cash and Safety Net Assistance-FNP-Non-Cash data is not available for New York City.

\* May include otherwise Temporary Assistance for Needy Families eligible or otherwise Safety Net Assistance MOE eligible non-disabled two-parent cases.

Table 15  
**SAFETY NET ASSISTANCE-FNP-NON-CASH BY MAINTENANCE OF EFFORT STATUS**  
 Maintenance of Effort (MOE) vs. Non-Maintenance of Effort (Non-MOE)  
 Cases, Recipients, Children, Adults and Expenditures by Local District  
 July 2021

Local District	Maintenance of Effort (MOE)					Non-Maintenance of Effort (Non-MOE)*				
	Cases	Recipients	Children	Adults	Expenditures	Cases	Recipients	Children	Adults	Expenditures
New York State	See Note	See Note	See Note	See Note	See Note	See Note	See Note	See Note	See Note	See Note
New York City	See Note	See Note	See Note	See Note	See Note	See Note	See Note	See Note	See Note	See Note
Rest of State	3,559	13,072	9,422	3,650	\$4,025,758	9,342	10,848	1,405	9,443	\$6,811,439
Albany	62	229	166	63	38,668	204	225	18	207	109,521
Allegany	8	23	15	8	3,682	29	37	7	30	20,928
Broome	94	339	241	98	60,512	400	428	59	369	209,049
Cattaraugus	9	34	25	9	6,519	143	146	8	138	84,574
Cayuga	26	87	60	27	23,805	97	109	9	100	101,531
Chautauqua	96	347	248	99	60,662	206	247	32	215	113,924
Chemung	9	34	24	10	6,806	64	72	26	46	45,722
Chenango	5	19	15	4	2,115	22	22	0	22	15,403
Clinton	13	39	26	13	9,626	96	103	14	89	52,993
Columbia	12	41	29	12	8,651	50	55	5	50	65,540
Cortland	5	16	11	5	2,186	54	56	1	55	33,843
Delaware	3	12	9	3	2,360	12	12	1	11	8,029
Dutchess	11	43	32	11	13,418	148	157	22	135	149,787
Erie	664	2,649	1,966	683	383,873	1,113	1,440	276	1,164	449,918
Essex	1	2	1	1	522	7	7	1	6	3,074
Franklin	12	43	32	11	6,855	41	49	9	40	19,937
Fulton	5	17	12	5	2,253	31	31	0	31	19,515
Genesee	7	26	19	7	4,557	28	28	0	28	18,730
Greene	6	18	13	5	3,112	35	37	2	35	27,940
Hamilton	0	0	0	0	0	0	0	0	0	0
Herkimer	13	52	41	11	8,524	53	60	11	49	30,309
Jefferson	40	130	88	42	23,066	219	241	25	216	124,614
Lewis	0	0	0	0	0	18	19	8	11	8,201
Livingston	8	24	16	8	5,461	53	58	6	52	33,400
Madison	4	12	10	2	1,778	29	32	8	24	16,741
Monroe	395	1,420	1,019	401	233,657	1,003	1,070	55	1,015	549,268
Montgomery	32	110	80	30	19,567	75	101	19	82	39,383
Nassau	216	761	542	219	459,325	584	773	148	625	743,980
Niagara	56	202	142	60	36,240	216	229	19	210	118,306
Oneida	157	629	472	157	86,373	252	310	50	260	132,531
Onondaga	257	1,009	752	257	161,066	414	479	58	421	242,135
Ontario	20	66	46	20	17,833	143	158	24	134	102,562
Orange	112	409	293	116	125,630	235	260	20	240	197,353
Orleans	16	57	38	19	19,356	41	50	11	39	20,286
Oswego	49	163	114	49	31,830	140	184	37	147	70,372
Otsego	5	23	18	5	5,139	20	20	1	19	15,657
Putnam	0	0	0	0	0	10	10	1	9	7,954
Rensselaer	93	346	254	92	56,378	37	63	20	43	34,563
Rockland	20	64	43	21	9,240	178	263	78	185	106,738
St. Lawrence	45	158	112	46	30,636	155	174	20	154	75,110
Saratoga	1	5	4	1	871	27	27	0	27	32,924
Schenectady	74	280	202	78	45,560	159	188	21	167	93,269
Schoharie	2	8	6	2	1,754	7	7	1	6	6,979
Schuyler	3	14	10	4	2,519	14	14	0	14	6,149
Seneca	9	31	20	11	6,086	39	40	3	37	29,611
Steuben	15	60	43	17	9,359	86	96	11	85	54,433
Suffolk	312	1,182	855	327	789,030	733	860	102	758	884,947
Sullivan	25	97	70	27	14,945	86	86	0	86	57,027
Tioga	8	34	24	10	5,486	21	21	0	21	21,575
Tompkins	17	52	31	21	15,643	125	138	23	115	136,406
Ulster	56	174	112	62	97,833	159	188	24	164	157,984
Warren	3	6	3	3	1,406	32	33	0	33	29,484
Washington	4	13	10	3	3,025	35	46	12	34	18,385
Wayne	7	17	11	6	3,924	67	69	8	61	33,035
Westchester	435	1,439	991	448	1,055,435	1,042	1,155	81	1,074	997,595
Wyoming	1	3	2	1	668	31	40	8	32	18,690
Yates	1	4	4	0	933	24	25	2	23	13,525

Note: A breakout of Safety Net Assistance-FNP-Cash and Safety Net Assistance-FNP-Non-Cash data is not available for New York City.

\* The Non-MOE category includes otherwise Temporary Assistance for Needy Families eligible or otherwise Safety Net Assistance MOE eligible non-disabled two-parent cases.

Table 16  
**SUPPLEMENTAL NUTRITION ASSISTANCE PROGRAM**  
Households, Persons and Value of Supplemental Nutrition Assistance Program Benefits by Local District  
July 2021

Local District	Total			Temporary Assistance			Non-Temporary Assistance		
	Households	Persons	SNAP Benefits	Households	Persons	SNAP Benefits	Households	Persons	SNAP Benefits
New York State	1,608,545	2,798,640	\$696,279,187	611,652	872,428	\$237,483,555	996,893	1,926,212	\$458,795,632
New York City	1,001,472	1,708,727	432,142,995	427,528	639,759	173,130,666	573,944	1,068,968	259,012,329
Rest of State	607,073	1,089,913	264,136,192	184,124	232,669	64,352,889	422,949	857,244	199,783,303
Albany	18,888	34,130	8,188,782	5,098	6,208	1,725,381	13,790	27,922	6,463,401
Allegany	2,821	4,943	1,185,212	969	1,182	327,391	1,852	3,761	857,821
Broome	14,655	25,329	6,240,118	5,253	6,717	1,876,051	9,402	18,612	4,364,067
Cattaraugus	5,812	10,385	2,495,243	1,861	2,227	629,861	3,951	8,158	1,865,382
Cayuga	4,806	8,745	2,085,618	1,406	1,842	498,255	3,400	6,903	1,587,363
Chautauqua	12,528	22,970	5,449,296	3,674	5,267	1,376,800	8,854	17,703	4,072,496
Chemung	7,190	13,138	3,147,909	2,040	2,416	679,416	5,150	10,722	2,468,493
Chenango	3,179	5,733	1,355,451	950	1,098	306,196	2,229	4,635	1,049,255
Clinton	6,468	10,446	2,560,874	2,126	2,469	698,191	4,342	7,977	1,862,683
Columbia	3,237	5,136	1,281,005	1,009	1,159	333,521	2,228	3,977	947,484
Cortland	3,051	5,326	1,278,129	856	1,020	288,142	2,195	4,306	989,987
Delaware	2,497	4,402	1,033,241	683	798	219,086	1,814	3,604	814,155
Dutchess	10,730	17,648	4,445,257	3,298	3,880	1,108,364	7,432	13,768	3,336,893
Erie	77,066	140,988	34,700,614	22,650	30,572	8,328,495	54,416	110,416	26,372,119
Essex	1,835	3,106	753,174	608	651	190,812	1,227	2,455	562,362
Franklin	3,780	6,329	1,540,152	1,494	1,742	499,066	2,286	4,587	1,041,086
Fulton	4,243	7,041	1,722,112	1,349	1,501	435,994	2,894	5,540	1,286,118
Genesee	2,741	4,490	1,094,330	798	935	264,051	1,943	3,555	830,279
Greene	2,584	4,121	1,029,779	848	967	279,563	1,736	3,154	750,216
Hamilton	181	265	66,749	48	49	14,462	133	216	52,287
Herkimer	4,680	8,415	1,987,315	1,149	1,394	390,055	3,531	7,021	1,597,260
Jefferson	8,186	14,826	3,515,157	2,471	3,110	857,187	5,715	11,716	2,657,970
Lewis	1,517	2,689	627,247	387	435	121,458	1,130	2,254	505,789
Livingston	3,190	5,429	1,322,082	986	1,226	339,580	2,204	4,203	982,502
Madison	3,367	6,107	1,454,089	892	1,026	289,235	2,475	5,081	1,164,854
Monroe	59,904	106,615	26,061,451	20,021	26,158	7,181,335	39,883	80,457	18,880,116
Montgomery	3,985	7,549	1,781,779	1,245	1,582	433,166	2,740	5,967	1,348,613
Nassau	28,109	40,525	10,382,542	11,135	13,284	3,721,520	16,974	27,241	6,661,022
Niagara	15,058	25,540	6,250,058	4,378	5,308	1,488,177	10,680	20,232	4,761,881
Oneida	18,741	36,505	8,631,103	6,051	8,244	2,210,771	12,690	28,261	6,420,332
Onondaga	34,647	64,517	15,352,809	11,033	15,546	4,117,054	23,614	48,971	11,235,755
Ontario	5,111	8,526	2,086,529	1,601	1,919	547,234	3,510	6,607	1,539,295
Orange	16,222	37,961	8,736,495	4,489	5,576	1,546,648	11,733	32,385	7,189,847
Orleans	2,810	5,062	1,201,208	869	1,147	310,805	1,941	3,915	890,403
Oswego	8,997	17,287	4,058,087	2,465	3,381	894,364	6,532	13,906	3,163,723
Otsego	2,954	5,087	1,216,184	887	1,010	288,901	2,067	4,077	927,283
Putnam	1,552	2,297	582,971	464	494	143,069	1,088	1,803	439,902
Rensselaer	7,575	14,176	3,340,590	2,484	3,402	879,362	5,091	10,774	2,461,228
Rockland	14,310	41,935	9,143,465	3,143	3,661	1,068,553	11,167	38,274	8,074,912
St. Lawrence	7,354	13,239	3,143,113	2,579	3,156	863,939	4,775	10,083	2,279,174
Saratoga	7,922	13,013	3,195,737	1,877	2,023	597,241	6,045	10,990	2,598,496
Schenectady	11,235	21,077	5,028,689	3,802	4,873	1,315,817	7,433	16,204	3,712,872
Schoharie	1,917	3,398	809,847	430	500	142,706	1,487	2,898	667,141
Schuyler	1,157	1,996	485,574	281	331	93,944	876	1,665	391,630
Seneca	1,850	3,173	754,042	571	688	186,805	1,279	2,485	567,237
Steuben	5,526	9,991	2,349,065	1,836	2,227	621,203	3,690	7,764	1,727,862
Suffolk	60,808	99,300	24,971,363	16,268	19,672	5,665,990	44,540	79,628	19,305,373
Sullivan	6,140	12,436	2,922,880	1,757	2,118	601,897	4,383	10,318	2,320,983
Tioga	2,654	5,007	1,169,304	677	818	224,917	1,977	4,189	944,387
Tompkins	4,222	7,138	1,740,650	1,276	1,514	424,928	2,946	5,624	1,315,722
Ulster	10,167	16,668	4,186,217	2,912	3,431	974,141	7,255	13,237	3,212,076
Warren	3,722	6,214	1,496,482	1,023	1,123	327,562	2,699	5,091	1,168,920
Washington	3,495	6,301	1,490,660	1,017	1,232	340,582	2,478	5,069	1,150,078
Wayne	4,822	8,301	2,021,705	1,462	1,693	485,076	3,360	6,608	1,536,629
Westchester	42,232	72,513	17,932,133	12,344	15,662	4,300,454	29,888	56,851	13,631,679
Wyoming	1,471	2,431	579,896	455	544	150,060	1,016	1,887	429,836
Yates	1,172	1,998	474,629	389	461	128,055	783	1,537	346,574

Note: Supplemental Nutrition Assistance Program households containing only Supplemental Security Income recipients or a mix of Temporary Assistance and Supplemental Security Income recipients are counted as Temporary Assistance.

Table 17  
**SUPPLEMENTAL SECURITY INCOME**  
 Recipients, Total Program Expenditures and Federal and State Shares, by Local District  
 July 2021

Local District	Recipients	Expenditures		
		Total	Federal	State
New York State*	634,466	\$393,819,394	\$347,995,597	\$45,823,797
New York City	372,779	232,426,148	206,828,374	25,597,774
Rest of State	258,881	159,887,344	140,088,018	19,799,326
Albany	7,110	4,359,647	3,870,451	489,196
Allegany	1,479	900,476	805,046	95,430
Broome	7,391	4,699,513	4,256,842	442,671
Cattaraugus	2,489	1,500,462	1,312,764	187,698
Cayuga	1,890	1,139,957	985,443	154,514
Chautauqua	4,653	2,911,235	2,582,422	328,813
Chemung	3,197	1,938,760	1,725,489	213,271
Chenango	1,621	942,332	844,129	98,203
Clinton	2,823	1,700,939	1,498,096	202,843
Columbia	1,481	889,838	721,540	168,298
Cortland	1,125	700,301	629,680	70,621
Delaware	1,197	698,240	611,133	87,107
Dutchess	5,482	3,384,778	2,799,787	584,991
Erie	28,497	18,208,140	16,175,145	2,032,995
Essex	998	602,364	486,999	115,365
Franklin	1,783	1,137,166	980,730	156,436
Fulton	2,192	1,308,217	1,108,940	199,277
Genesee	1,228	699,291	587,272	112,019
Greene	1,376	808,672	700,746	107,926
Hamilton	64	33,154	29,608	3,546
Herkimer	1,725	1,052,793	919,208	133,585
Jefferson	3,017	1,821,151	1,585,001	236,150
Lewis	565	321,623	286,129	35,494
Livingston	1,277	791,295	720,273	71,022
Madison	1,393	848,222	746,186	102,036
Monroe	27,879	18,653,270	16,758,771	1,894,499
Montgomery	2,012	1,236,686	1,049,319	187,367
Nassau	16,686	9,582,179	8,222,481	1,359,698
Niagara	6,089	3,765,234	3,300,152	465,082
Oneida	7,981	4,916,095	4,376,913	539,182
Onondaga	14,445	9,400,302	8,468,023	932,279
Ontario	2,056	1,263,621	1,123,910	139,711
Orange	7,231	4,509,490	3,900,582	608,908
Orleans	995	601,405	540,735	60,670
Oswego	3,459	2,124,731	1,915,323	209,408
Otsego	1,376	815,746	686,369	129,377
Putnam	923	516,119	425,541	90,578
Rensselaer	4,520	2,821,214	2,465,230	355,984
Rockland	5,123	3,105,498	2,482,943	622,555
St. Lawrence	3,755	2,265,278	2,025,080	240,198
Saratoga	3,163	1,863,996	1,644,679	219,317
Schenectady	5,413	3,373,406	2,997,343	376,063
Schoharie	686	449,353	393,583	55,770
Schuyler	431	257,651	214,059	43,592
Seneca	854	538,912	478,902	60,010
Steuben	3,014	1,871,737	1,684,600	187,137
Suffolk	20,702	12,373,690	10,456,555	1,917,135
Sullivan	2,760	1,644,874	1,362,527	282,347
Tioga	1,166	691,983	620,561	71,422
Tompkins	1,558	957,149	818,680	138,469
Ulster	4,174	2,493,749	2,151,398	342,351
Warren	1,588	898,469	784,904	113,565
Washington	1,700	983,498	862,929	120,569
Wayne	2,246	1,392,319	1,254,317	138,002
Westchester	17,673	10,416,495	9,023,540	1,392,955
Wyoming	672	394,804	354,789	40,015
Yates	498	309,825	274,221	35,604
Mental Hygiene	2,806	1,505,902	1,079,205	426,697

\* Only New York State includes Mental Hygiene

Table 18  
**SUPPLEMENTAL SECURITY INCOME**  
 Recipients by Living Arrangement and Location  
 July 2021

Living Arrangement	New York State	New York City	Rest of State	Mental Hygiene
Living Alone	293,454	185,034	108,419	1
Living With Others	260,753	148,373	112,370	10
Living in Household of Another	30,190	18,206	11,983	1
Congregate Care Level 1	1,521	149	470	902
Congregate Care Level 2	24,699	9,247	14,798	654
Congregate Care Level 3	10,755	5,258	5,496	1
Title XIX Institution	9,304	5,536	3,561	207
Other*	3,790	982	1,784	1,024
<b>Total</b>	<b>634,466</b>	<b>372,785</b>	<b>258,881</b>	<b>2,800</b>

Table 19  
**SUPPLEMENTAL SECURITY INCOME**  
 Recipients by Living Arrangement and Category of Assistance  
 July 2021

Living Arrangement	Total	Category of Assistance		
		Aged	Blind	Disabled
Living Alone	293,454	80,487	1,206	211,761
Living With Others	260,753	31,281	1,358	228,114
Living in Household of Another	30,190	8,815	249	21,126
Congregate Care Level 1	1,521	186	4	1,331
Congregate Care Level 2	24,699	1,958	94	22,647
Congregate Care Level 3	10,755	4,724	31	6,000
Title XIX Institution & Other*	13,094	1,467	84	11,543
<b>Total</b>	<b>634,466</b>	<b>128,918</b>	<b>3,026</b>	<b>502,522</b>

\* "Other" includes recipients either a) residing in a private medical facility and Medicaid is paying for less than 50% of the cost of care, b) residing in certain publicly operated residential facilities serving 16 or fewer residents, or c) residing in a public emergency shelter for six calendar months during a nine month period. Such cases receive no state Supplemental Security Income supplement.

Table 20  
CHILD SUPPORT COLLECTIONS (IV-D)  
July 2021

Local District	Total	Current Assistance	Former Assistance	Never Assistance
New York State	\$180,321,724.00	\$6,353,356.62	\$104,994,661.72	\$68,973,705.66
New York City	77,152,629.51	2,942,768.35	46,509,576.04	27,700,285.12
Rest of State	103,169,094.49	3,410,588.27	58,485,085.68	41,273,420.54
Albany	2,639,696.58	55,030.08	1,408,703.93	1,175,962.57
Allegany	515,518.34	30,177.46	335,168.57	150,172.31
Broome	1,546,609.91	93,044.25	955,871.05	497,694.61
Cattaraugus	827,678.91	30,933.77	540,144.54	256,600.60
Cayuga	873,426.28	48,260.76	587,274.45	237,891.07
Chautauqua	1,267,533.16	64,897.27	862,046.23	340,589.66
Chemung	869,359.36	44,328.49	557,460.32	267,570.55
Chenango	421,608.13	25,330.24	254,629.81	141,648.08
Clinton	1,014,086.29	61,744.50	583,742.38	368,599.41
Columbia	483,960.21	16,379.72	295,873.64	171,706.85
Cortland	437,022.54	22,687.27	255,568.67	158,766.60
Delaware	387,712.33	20,693.30	261,129.72	105,889.31
Dutchess	2,717,809.66	67,804.33	1,438,639.66	1,211,365.67
Erie	8,383,253.80	442,483.11	5,327,557.50	2,613,213.19
Essex	321,478.36	9,273.23	193,836.93	118,368.20
Franklin	561,365.27	11,017.71	315,465.30	234,882.26
Fulton	627,242.79	20,948.91	444,337.01	161,956.87
Genesee	595,476.52	12,640.77	380,534.55	202,301.20
Greene	395,357.66	14,119.63	221,884.03	159,354.00
Hamilton	25,158.70	1,018.00	13,334.24	10,806.46
Herkimer	572,710.01	31,090.20	394,616.03	147,003.78
Jefferson	1,394,009.70	55,229.32	694,319.65	644,460.73
Lewis	350,737.45	11,640.43	265,050.99	74,046.03
Livingston	692,191.53	25,783.06	441,254.52	225,153.95
Madison	553,510.77	21,750.78	362,585.97	169,174.02
Monroe	6,981,449.12	248,985.27	4,509,970.78	2,222,493.07
Montgomery	604,526.88	23,906.08	415,284.65	165,336.15
Nassau	9,671,358.08	163,855.30	4,562,205.06	4,945,297.72
Niagara	2,228,942.20	116,340.79	1,548,296.43	564,304.98
Oneida	1,941,394.78	94,301.99	1,310,717.17	536,375.62
Onondaga	4,649,711.52	155,353.13	3,072,167.39	1,422,191.00
Ontario	1,116,546.29	59,453.22	703,174.76	353,918.31
Orange	3,834,680.78	79,204.56	1,784,388.66	1,971,087.56
Orleans	419,300.69	24,242.70	296,504.09	98,553.90
Oswego	1,429,114.32	76,139.75	942,568.08	410,406.49
Otsego	453,976.15	41,791.70	245,613.21	166,571.24
Putnam	603,396.81	4,232.75	259,626.26	339,537.80
Rensselaer	1,809,048.64	62,911.24	1,007,488.49	738,648.91
Rockland	2,351,380.87	34,102.50	1,197,853.58	1,119,424.79
St. Lawrence	1,177,837.04	33,526.28	789,322.89	354,987.87
Saratoga	1,825,839.80	20,483.40	928,000.34	877,356.06
Schenectady	1,595,845.49	66,315.96	850,997.52	678,532.01
Schoharie	388,479.79	15,826.58	261,015.37	111,637.84
Schuyler	159,507.22	11,804.74	107,636.48	40,066.00
Seneca	308,926.22	13,441.44	190,506.62	104,978.16
Steuben	975,982.20	43,321.17	645,459.58	287,201.45
Suffolk	15,941,973.92	379,630.54	8,064,060.98	7,498,282.40
Sullivan	753,411.70	28,228.26	424,005.55	301,177.89
Tioga	484,655.06	28,130.82	294,412.06	162,112.18
Tompkins	688,238.29	19,496.68	407,546.93	261,194.68
Ulster	1,811,911.65	47,095.27	977,677.97	787,138.41
Warren	762,256.81	18,417.74	444,271.45	299,567.62
Washington	783,022.31	38,777.64	561,265.83	182,978.84
Wayne	940,300.27	21,761.17	515,418.91	403,120.19
Westchester	7,394,128.55	169,150.82	3,410,344.28	3,814,633.45
Wyoming	441,044.11	20,512.89	257,084.98	163,446.24
Yates	166,392.67	11,539.30	109,169.64	45,683.73

Table 21  
**AGGREGATE CLAIMS**  
**TOTAL TEMPORARY ASSISTANCE**  
Family Assistance and Safety Net Assistance  
July 2021

Month	New York State			New York City			Rest of State		
	Recipients	Net Expenditures	Monthly Average Payment	Recipients	Net Expenditures	Monthly Average Payment	Recipients	Net Expenditures	Monthly Average Payment
August 2019	472,885	\$197,585,375	\$417.83	322,705	\$145,779,963	\$451.74	150,180	\$51,805,412	\$344.96
September 2019	467,763	\$210,189,967	\$449.35	321,290	\$159,259,602	\$495.69	146,473	\$50,930,365	\$347.71
October 2019	469,024	\$196,520,746	\$419.00	321,738	\$141,768,203	\$440.63	147,286	\$54,752,543	\$371.74
November 2019	463,031	\$222,465,699	\$480.46	319,153	\$173,441,391	\$543.44	143,878	\$49,024,308	\$340.74
December 2019	462,357	\$551,324,417	\$1,192.42	319,174	\$490,875,887	\$1,537.96	143,183	\$60,448,530	\$422.18
January 2020	457,899	\$247,200,331	\$539.86	314,173	\$192,854,911	\$613.85	143,726	\$54,345,420	\$378.12
February 2020	459,285	\$199,670,104	\$434.74	317,410	\$148,534,726	\$467.96	141,875	\$51,135,378	\$360.43
March 2020	457,969	\$187,921,731	\$410.34	318,153	\$136,120,536	\$427.85	139,816	\$51,801,195	\$370.50
April 2020	465,525	\$179,673,264	\$385.96	326,301	\$128,609,408	\$394.14	139,224	\$51,063,856	\$366.77
May 2020	497,420	\$185,508,680	\$372.94	356,601	\$133,449,657	\$374.23	140,819	\$52,059,023	\$369.69
June 2020	509,624	\$196,408,039	\$385.40	370,261	\$142,856,226	\$385.83	139,363	\$53,551,813	\$384.26
July 2020	511,907	\$188,133,354	\$367.51	378,171	\$136,650,957	\$361.35	133,736	\$51,482,397	\$384.96
August 2020	507,562	\$249,441,521	\$491.45	379,399	\$201,524,147	\$531.17	128,163	\$47,917,374	\$373.88
September 2020	503,551	\$241,286,475	\$479.17	380,425	\$194,573,621	\$511.46	123,126	\$46,712,854	\$379.39
October 2020	497,139	\$222,102,840	\$446.76	376,414	\$177,434,646	\$471.38	120,725	\$44,668,194	\$370.00
November 2020	485,711	\$206,962,431	\$426.10	369,398	\$161,809,851	\$438.04	116,313	\$45,152,580	\$388.20
December 2020	478,861	\$736,549,640	\$1,538.13	363,748	\$683,477,414	\$1,878.99	115,113	\$53,072,226	\$461.04
January 2021	469,351	\$195,130,622	\$415.75	360,228	\$153,973,475	\$427.43	109,123	\$41,157,147	\$377.16
February 2021	470,206	\$211,418,808	\$449.63	360,235	\$169,854,583	\$471.51	109,971	\$41,564,225	\$377.96
March 2021	472,172	\$221,477,835	\$469.06	362,084	\$174,928,646	\$483.12	110,088	\$46,549,189	\$422.84
April 2021	469,961	\$156,244,696	\$332.46	362,616	\$111,837,375	\$308.42	107,345	\$44,407,321	\$413.69
May 2021	466,573	\$250,257,149	\$536.37	363,627	\$209,238,820	\$575.42	102,946	\$41,018,329	\$398.45
June 2021	462,008	\$210,142,338	\$454.85	361,510	\$172,064,184	\$475.96	100,498	\$38,078,154	\$378.89
July 2021	456,630	\$158,835,916	\$347.84	358,024	\$122,075,799	\$340.97	98,606	\$36,760,117	\$372.80

Note: Data pursuant to a New York State Legislative mandate S. 6057-B/A. 9557-B, Chapter 57, L. 2004.

Based on local district claims submitted on claims Schedules A and C. Includes reimbursable expenditures for basic assistance, rent supplements, family shelters, domestic violence shelters, security deposits, transitional services, diversion transportation, diversion payments, and other non-assistance. These claims are net of cancellations and refunds, and include any reconciliations and supplemental claims applied to the month after initial expenditure reporting is done. Thus, these data differ from the expenditure data presented elsewhere in this document, which are derived from original payment issuance activity during the month, net of cancellations and refunds in that month.

District claiming activity for recent months is generally not complete before the statutorily required due date for this report. Thus, claims for recent months may appear substantially below those for earlier months. Claims tables in future months of this report will continue to include the historical periods above, adjusted for claiming activity occurring subsequent to this report.

Table 22  
**AGGREGATE CLAIMS**  
**FEDERALLY PARTICIPATING - TANF**  
**Family Assistance-FP and Safety Net Assistance-FP**  
**July 2021**

Month	New York State			New York City			Rest of State		
	Recipients	Net Expenditures	Monthly Average Payment	Recipients	Net Expenditures	Monthly Average Payment	Recipients	Net Expenditures	Monthly Average Payment
August 2019	179,680	\$70,092,889	\$390.10	104,300	\$46,492,806	\$445.76	75,380	\$23,600,083	\$313.08
September 2019	177,792	\$78,471,990	\$441.37	103,743	\$54,534,997	\$525.67	74,049	\$23,936,993	\$323.26
October 2019	177,773	\$66,492,998	\$374.03	103,543	\$41,817,277	\$403.86	74,230	\$24,675,721	\$332.42
November 2019	175,242	\$90,915,542	\$518.80	102,564	\$68,625,316	\$669.10	72,678	\$22,290,226	\$306.70
December 2019	174,645	\$251,800,266	\$1,441.78	102,673	\$223,616,980	\$2,177.95	71,972	\$28,183,286	\$391.59
January 2020	172,068	\$107,507,725	\$624.80	100,309	\$83,289,427	\$830.33	71,759	\$24,218,298	\$337.49
February 2020	171,767	\$67,148,883	\$390.93	100,569	\$43,996,078	\$437.47	71,198	\$23,152,805	\$325.19
March 2020	170,457	\$63,423,560	\$372.08	100,454	\$40,298,989	\$401.17	70,003	\$23,124,571	\$330.34
April 2020	174,726	\$57,491,626	\$329.04	105,635	\$34,940,955	\$330.77	69,091	\$22,550,671	\$326.39
May 2020	186,522	\$59,863,427	\$320.95	116,655	\$37,007,532	\$317.24	69,867	\$22,855,895	\$327.13
June 2020	188,789	\$68,599,017	\$363.36	120,028	\$45,260,102	\$377.08	68,761	\$23,338,915	\$339.42
July 2020	185,829	\$57,332,341	\$308.52	120,022	\$35,180,996	\$293.12	65,807	\$22,151,345	\$336.61
August 2020	184,603	\$96,910,270	\$524.97	120,790	\$76,040,785	\$629.53	63,813	\$20,869,485	\$327.04
September 2020	180,451	\$90,077,281	\$499.18	119,461	\$69,697,923	\$583.44	60,990	\$20,379,358	\$334.14
October 2020	178,566	\$76,923,162	\$430.78	118,545	\$57,929,244	\$488.67	60,021	\$18,993,918	\$316.45
November 2020	173,207	\$73,567,118	\$424.74	115,124	\$53,835,356	\$467.63	58,083	\$19,731,762	\$339.72
December 2020	170,279	\$359,170,437	\$2,109.31	112,874	\$335,293,381	\$2,970.51	57,405	\$23,877,056	\$415.94
January 2021	165,507	\$60,721,698	\$366.88	111,064	\$43,430,097	\$391.04	54,443	\$17,291,601	\$317.61
February 2021	165,373	\$70,852,012	\$428.44	110,755	\$52,921,979	\$477.83	54,618	\$17,930,033	\$328.28
March 2021	164,596	\$74,260,517	\$451.17	110,547	\$54,914,482	\$496.75	54,049	\$19,346,035	\$357.94
April 2021	163,151	\$50,122,376	\$307.21	110,181	\$31,084,517	\$282.12	52,970	\$19,037,859	\$359.41
May 2021	160,991	\$96,821,171	\$601.41	109,756	\$79,719,275	\$726.33	51,235	\$17,101,896	\$333.79
June 2021	159,860	\$78,265,143	\$489.59	109,430	\$62,068,434	\$567.20	50,430	\$16,196,709	\$321.17
July 2021	157,595	\$46,627,863	\$295.87	107,838	\$30,409,430	\$281.99	49,757	\$16,218,433	\$325.95

Note: Data pursuant to a New York State Legislative mandate S. 6057-B/A. 9557-B, Chapter 57, L. 2004. Based on local district claims submitted on claims Schedules A and C. Includes reimbursable expenditures for basic assistance, rent supplements, family shelters, domestic violence shelters, security deposits, transitional services, diversion transportation, diversion payments, and other non-assistance. These claims are net of cancellations and refunds, and include any reconciliations and supplemental claims applied to the month after initial expenditure reporting is done. Thus, these data differ from the expenditure data presented elsewhere in this document, which are derived from original payment issuance activity during the month, net of cancellations and refunds in that month. District claiming activity for recent months is generally not complete before the statutorily required due date for this report. Thus, claims for recent months may appear substantially below those for earlier months. Claims tables in future months of this report will continue to include the historical periods above, adjusted for claiming activity occurring subsequent to this report.



Table 23  
**AGGREGATE CLAIMS**  
**FEDERALLY NON-PARTICIPATING**  
**Safety Net Assistance-FNP Maintenance of Effort**  
**July 2021**

Month	New York State			New York City			Rest of State		
	Recipients	Net Expenditures	Monthly Average Payment	Recipients	Net Expenditures	Monthly Average Payment	Recipients	Net Expenditures	Monthly Average Payment
August 2019	109,834	\$32,925,466	\$299.77	82,783	\$26,329,027	\$318.05	27,051	\$6,596,439	\$243.85
September 2019	109,374	\$40,769,201	\$372.75	82,667	\$33,946,076	\$410.64	26,707	\$6,823,125	\$255.48
October 2019	109,120	\$25,086,877	\$229.90	82,431	\$17,893,614	\$217.07	26,689	\$7,193,263	\$269.52
November 2019	108,718	\$42,541,696	\$391.30	82,745	\$36,375,924	\$439.61	25,973	\$6,165,772	\$237.39
December 2019	108,831	\$109,228,725	\$1,003.65	82,810	\$101,686,770	\$1,227.95	26,021	\$7,541,955	\$289.84
January 2020	106,756	\$39,070,997	\$365.98	80,845	\$32,113,131	\$397.22	25,911	\$6,957,866	\$268.53
February 2020	108,244	\$32,830,607	\$303.30	82,885	\$26,153,851	\$315.54	25,359	\$6,676,756	\$263.29
March 2020	107,731	\$38,068,568	\$353.37	82,644	\$31,457,568	\$380.64	25,087	\$6,611,000	\$263.52
April 2020	106,572	\$28,231,840	\$264.91	81,381	\$21,641,458	\$265.93	25,191	\$6,590,382	\$261.62
May 2020	110,756	\$28,515,928	\$257.47	85,533	\$22,137,339	\$258.82	25,223	\$6,378,589	\$252.89
June 2020	114,354	\$37,961,317	\$331.96	89,568	\$30,880,627	\$344.77	24,786	\$7,080,690	\$285.67
July 2020	115,882	\$30,535,099	\$263.50	92,135	\$24,222,014	\$262.90	23,747	\$6,313,085	\$265.85
August 2020	115,226	\$40,971,735	\$355.58	92,929	\$34,913,141	\$375.70	22,297	\$6,058,594	\$271.72
September 2020	115,737	\$48,029,724	\$414.99	94,504	\$42,181,026	\$446.34	21,233	\$5,848,698	\$275.45
October 2020	114,456	\$36,895,236	\$322.35	93,882	\$31,901,992	\$339.81	20,574	\$4,993,244	\$242.70
November 2020	113,511	\$36,192,737	\$318.85	93,695	\$30,874,914	\$329.53	19,816	\$5,317,823	\$268.36
December 2020	111,742	\$136,740,174	\$1,223.71	92,326	\$131,182,710	\$1,420.86	19,416	\$5,557,464	\$286.23
January 2021	110,458	\$33,260,570	\$301.12	92,045	\$28,572,466	\$310.42	18,413	\$4,688,104	\$254.61
February 2021	111,017	\$35,742,640	\$321.96	92,336	\$30,739,360	\$332.91	18,681	\$5,003,280	\$267.83
March 2021	111,119	\$43,791,868	\$394.10	92,887	\$38,245,987	\$411.75	18,232	\$5,545,881	\$304.18
April 2021	110,815	\$19,569,068	\$176.59	93,206	\$14,430,738	\$154.83	17,609	\$5,138,330	\$291.80
May 2021	110,863	\$40,884,925	\$368.79	94,082	\$36,553,908	\$388.53	16,781	\$4,331,017	\$258.09
June 2021	109,782	\$42,363,033	\$385.88	93,601	\$38,443,438	\$410.72	16,181	\$3,919,595	\$242.23
July 2021	108,726	\$27,895,095	\$256.56	92,961	\$23,647,117	\$254.38	15,765	\$4,247,978	\$269.46

Note: Data pursuant to a New York State Legislative mandate S. 6057-B/A. 9557-B, Chapter 57, L. 2004.

Based on local district claims submitted on claims Schedules A and C. Includes reimbursable expenditures for basic assistance, rent supplements, family shelters, domestic violence shelters, security deposits, transitional services, diversion transportation, diversion payments, and other non-assistance. These claims are net of cancellations and refunds, and include any reconciliations and supplemental claims applied to the month after initial expenditure reporting is done. Thus, these data differ from the expenditure data presented elsewhere in this document, which are derived from original payment issuance activity during the month, net of cancellations and refunds in that month.

District claiming activity for recent months is generally not complete before the statutorily required due date for this report. Thus, claims for recent months may appear substantially below those for earlier months. Claims tables in future months of this report will continue to include the historical periods above, adjusted for claiming activity occurring subsequent to this report.

Table 24  
**AGGREGATE CLAIMS**  
**FEDERALLY NON-PARTICIPATING**  
**Safety Net Assistance-FNP and Family Assistance-FNP Non-Maintenance of Effort**  
**July 2021**

Month	New York State			New York City			Rest of State		
	Recipients	Net Expenditures	Monthly Average Payment	Recipients	Net Expenditures	Monthly Average Payment	Recipients	Net Expenditures	Monthly Average Payment
August 2019	183,371	\$94,567,020	\$515.71	135,622	\$72,958,130	\$537.95	47,749	\$21,608,890	\$452.55
September 2019	180,597	\$90,948,776	\$503.60	134,880	\$70,778,529	\$524.75	45,717	\$20,170,247	\$441.20
October 2019	182,131	\$104,940,871	\$576.18	135,764	\$82,057,312	\$604.41	46,367	\$22,883,559	\$493.53
November 2019	179,071	\$89,008,461	\$497.06	133,844	\$68,440,151	\$511.34	45,227	\$20,568,310	\$454.78
December 2019	178,881	\$190,295,426	\$1,063.81	133,691	\$165,572,137	\$1,238.47	45,190	\$24,723,289	\$547.10
January 2020	179,075	\$100,621,609	\$561.90	133,019	\$77,452,353	\$582.27	46,056	\$23,169,256	\$503.07
February 2020	179,274	\$99,690,614	\$556.08	133,956	\$78,384,797	\$585.15	45,318	\$21,305,817	\$470.14
March 2020	179,781	\$86,429,603	\$480.75	135,055	\$64,363,979	\$476.58	44,726	\$22,065,624	\$493.35
April 2020	184,227	\$93,949,798	\$509.97	139,285	\$72,026,995	\$517.12	44,942	\$21,922,803	\$487.80
May 2020	200,142	\$97,129,325	\$485.30	154,413	\$74,304,786	\$481.21	45,729	\$22,824,539	\$499.13
June 2020	206,481	\$89,847,705	\$435.14	160,665	\$66,715,497	\$415.25	45,816	\$23,132,208	\$504.89
July 2020	210,196	\$100,265,914	\$477.01	166,014	\$77,247,947	\$465.31	44,182	\$23,017,967	\$520.98
August 2020	207,733	\$111,559,516	\$537.03	165,680	\$90,570,221	\$546.66	42,053	\$20,989,295	\$499.12
September 2020	207,363	\$103,179,470	\$497.58	166,460	\$82,694,672	\$496.78	40,903	\$20,484,798	\$500.81
October 2020	204,117	\$108,284,442	\$530.50	163,987	\$87,603,410	\$534.21	40,130	\$20,681,032	\$515.35
November 2020	198,993	\$97,202,576	\$488.47	160,579	\$77,099,581	\$480.13	38,414	\$20,102,995	\$523.32
December 2020	196,840	\$240,639,029	\$1,222.51	158,548	\$217,001,323	\$1,368.68	38,292	\$23,637,706	\$617.30
January 2021	193,386	\$101,148,354	\$523.04	157,119	\$81,970,912	\$521.71	36,267	\$19,177,442	\$528.78
February 2021	193,816	\$104,824,156	\$540.84	157,144	\$86,193,244	\$548.50	36,672	\$18,630,912	\$508.04
March 2021	196,457	\$103,425,450	\$526.45	158,650	\$81,768,177	\$515.40	37,807	\$21,657,273	\$572.84
April 2021	195,995	\$86,553,252	\$441.61	159,229	\$66,322,120	\$416.52	36,766	\$20,231,132	\$550.27
May 2021	194,719	\$112,551,053	\$578.02	159,789	\$92,965,637	\$581.80	34,930	\$19,585,416	\$560.70
June 2021	192,366	\$89,514,162	\$465.33	158,479	\$71,552,312	\$451.49	33,887	\$17,961,850	\$530.05
July 2021	190,309	\$84,312,958	\$443.03	157,225	\$68,019,252	\$432.62	33,084	\$16,293,706	\$492.50

Note: Data pursuant to a New York State Legislative mandate S. 6057-B/A. 9557-B, Chapter 57, L. 2004.

Based on local district claims submitted on claims Schedules A and C. Includes reimbursable expenditures for basic assistance, rent supplements, family shelters, domestic violence shelters, security deposits, transitional services, diversion transportation, diversion payments, and other non-assistance. These claims are net of cancellations and refunds, and include any reconciliations and supplemental claims applied to the month after initial expenditure reporting is done. Thus, these data differ from the expenditure data presented elsewhere in this document, which are derived from original payment issuance activity during the month, net of cancellations and refunds in that month.

District claiming activity for recent months is generally not complete before the statutorily required due date for this report. Thus, claims for recent months may appear substantially below those for earlier months. Claims tables in future months of this report will continue to include the historical periods above, adjusted for claiming activity occurring subsequent to this report.

Table 25  
HOME ENERGY ASSISTANCE PROGRAM\*  
Number and Dollar Amount of Benefits Authorized and Administrative Allocations - Federal Fiscal Year to Date  
July 2021

Local District	Benefits Authorized		Administrative Allocations
	Number	Dollar Amount	
New York State	1,655,942	\$297,720,132	\$30,185,014
New York City	900,518	46,585,772	6,102,624
Rest of State	755,424	251,134,360	24,082,390
Albany	20,501	5,766,361	459,526
Allegany	5,044	2,317,220	248,511
Broome	18,964	7,004,460	681,107
Cattaraugus	9,815	4,077,126	448,932
Cayuga	6,679	2,788,704	255,306
Chautauqua	16,081	5,747,332	536,793
Chemung	8,857	2,734,276	250,905
Chenango	5,115	2,672,752	241,518
Clinton	10,248	5,594,129	501,300
Columbia	4,683	2,230,666	187,888
Cortland	4,556	1,904,148	182,875
Delaware	4,934	2,579,398	258,596
Dutchess	12,870	4,302,503	398,497
Erie	108,253	31,448,439	3,888,277
Essex	2,865	1,602,901	138,693
Franklin	6,914	3,858,450	390,128
Fulton	6,571	3,002,955	274,455
Genesee	3,585	1,227,494	116,008
Greene	4,690	2,377,193	212,589
Hamilton	350	202,158	18,793
Herkimer	7,692	3,538,750	329,035
Jefferson	11,190	4,493,441	379,047
Lewis	2,959	1,621,553	148,739
Livingston	4,452	1,908,685	167,451
Madison	4,941	2,313,777	203,650
Monroe	63,123	16,023,057	1,441,998
Montgomery	6,434	2,882,791	258,452
Nassau	18,839	3,776,345	351,268
Niagara	20,347	6,037,800	660,572
Oneida	27,110	10,579,249	928,234
Onondaga	40,254	11,619,076	895,645
Ontario	6,920	2,344,005	225,192
Orange	18,992	6,318,921	665,651
Orleans	4,035	1,792,417	176,008
Oswego	11,028	5,057,610	364,081
Otsego	5,278	2,846,932	260,007
Putnam	1,760	639,759	56,491
Rensselaer	11,050	4,151,986	404,811
Rockland	16,880	3,780,127	295,835
St. Lawrence	12,693	6,068,866	625,920
Saratoga	12,993	5,653,275	501,947
Schenectady	12,340	3,435,045	275,456
Schoharie	3,512	1,897,555	162,453
Schuyler	2,137	1,201,566	106,792
Seneca	2,671	1,140,270	109,345
Steuben	10,312	4,324,045	514,118
Suffolk	62,714	15,390,348	1,299,263
Sullivan	8,479	4,045,808	400,914
Tioga	5,199	2,670,346	288,699
Tompkins	5,627	1,799,706	175,799
Ulster	14,864	5,961,516	556,798
Warren	5,315	2,415,596	222,855
Washington	5,891	3,068,626	276,969
Wayne	6,385	2,530,950	201,858
Westchester	35,170	2,586,665	278,576
Wyoming	2,593	1,063,383	110,010
Yates	1,670	715,848	71,754

\* Please Note: The Home Energy Assistance Program Federal Fiscal Year runs from October 1 through September 30.

Table 26  
HOME ENERGY ASSISTANCE PROGRAM - NON-EMERGENCY\*  
Number, Total Dollar Amount and Average Dollar Amount of Benefits Authorized - Federal Fiscal Year to Date  
July 2021

Local District	Autopay			Regular Non-Autopay			Cooling Assistance Component		
	Benefits Authorized	Dollar Amount Authorized	Average Dollar Amount	Benefits Authorized	Dollar Amount Authorized	Average Dollar Amount	Benefits Authorized	Dollar Amount Authorized	Average Dollar Amount
New York State	1,291,550	\$152,434,834	\$118	228,442	\$79,343,523	\$347	4,571	\$3,422,615	\$749
New York City	829,344	37,952,027	46	64,438	5,402,200	84	1,864	1,450,122	778
Rest of State	462,206	114,482,807	248	164,004	73,941,323	451	2,707	1,972,493	729
Albany	14,968	3,309,050	221	3,701	1,447,074	391	41	31,745	774
Allegany	2,148	859,380	400	1,772	868,986	490	35	26,115	746
Broome	11,357	3,134,923	276	4,729	2,187,958	463	121	83,891	693
Cattaraugus	4,745	1,706,356	360	2,798	1,286,330	460	68	43,843	645
Cayuga	3,470	1,196,679	345	2,014	911,956	453	45	35,147	781
Chautauqua	9,313	2,902,721	312	4,330	1,807,134	417	45	31,117	691
Chemung	5,815	1,354,816	233	1,974	767,996	389	101	79,550	788
Chenango	2,178	906,994	416	1,936	1,128,212	583	34	23,156	681
Clinton	4,913	2,322,679	473	2,420	1,447,890	598	77	55,583	722
Columbia	2,444	848,698	347	1,308	786,649	601	26	18,614	716
Cortland	2,374	765,736	323	1,138	576,182	506	22	15,188	690
Delaware	1,951	772,799	396	1,708	1,045,402	612	14	8,940	639
Dutchess	8,163	1,777,096	218	2,846	1,425,551	501	70	55,127	788
Erie	60,747	16,440,541	271	22,396	8,496,443	379	360	272,588	757
Essex	1,230	493,293	401	1,178	781,441	663	9	6,300	700
Franklin	2,785	1,168,839	420	2,005	1,300,992	649	45	27,442	610
Fulton	3,226	1,150,212	357	1,795	967,940	539	18	11,232	624
Genesee	2,206	626,013	284	894	405,909	454	24	18,049	752
Greene	2,111	797,018	378	1,284	781,728	609	11	6,729	612
Hamilton	140	56,014	400	134	89,878	671	0	0	0
Herkimer	3,419	1,151,362	337	2,357	1,210,885	514	50	38,214	764
Jefferson	6,014	2,001,033	333	2,855	1,296,124	454	53	33,774	637
Lewis	1,169	585,895	501	880	536,991	610	9	6,150	683
Livingston	2,585	919,956	356	1,091	554,661	508	24	18,849	785
Madison	2,256	800,614	355	1,601	859,902	537	31	22,593	729
Monroe	49,049	10,305,118	210	8,246	2,809,429	341	133	100,321	754
Montgomery	3,183	1,118,272	351	1,573	815,556	518	27	17,214	638
Nassau	15,138	1,918,780	127	2,583	1,235,450	478	31	24,790	800
Niagara	11,423	2,929,669	256	5,600	2,053,799	367	49	36,360	742
Oneida	14,686	4,321,121	294	6,364	2,956,825	465	98	71,479	729
Onondaga	28,030	6,682,678	238	7,778	2,669,812	343	118	76,432	648
Ontario	4,153	1,072,800	258	1,991	847,459	426	27	21,057	780
Orange	10,396	2,267,800	218	4,692	2,019,997	431	31	24,370	786
Orleans	2,085	783,670	376	1,127	578,378	513	35	26,587	760
Oswego	6,299	2,553,363	405	2,665	1,363,234	512	21	9,079	432
Otsego	2,170	870,666	401	1,705	1,065,745	625	32	22,046	689
Putnam	1,026	225,937	220	542	301,568	556	2	1,600	800
Rensselaer	5,878	1,567,713	267	3,017	1,392,303	461	64	47,050	735
Rockland	12,297	2,045,518	166	2,551	725,558	284	4	3,200	800
St. Lawrence	5,158	2,000,292	388	3,468	1,995,153	575	80	57,354	717
Saratoga	6,571	2,221,076	338	3,672	1,786,387	486	50	39,383	788
Schenectady	9,135	2,165,939	237	2,398	860,439	359	17	12,533	737
Schoharie	1,639	748,212	457	916	545,273	595	11	7,855	714
Schuyler	906	385,196	425	653	394,695	604	21	16,400	781
Seneca	1,364	470,159	345	851	422,327	496	10	5,793	579
Steuben	4,100	1,383,919	338	3,353	1,607,981	480	75	49,960	666
Suffolk	43,699	7,314,453	167	10,760	4,232,548	393	220	173,393	788
Sullivan	3,857	1,122,819	291	2,088	1,347,174	645	15	10,815	721
Tioga	2,020	908,527	450	1,504	868,306	577	19	10,045	529
Tompkins	3,452	794,489	230	1,463	590,325	404	19	12,147	639
Ulster	8,526	2,494,151	293	3,233	1,647,446	510	28	21,073	753
Warren	2,498	830,731	333	1,592	874,789	549	17	11,397	670
Washington	2,429	1,067,928	440	1,658	945,481	570	15	12,000	800
Wayne	3,919	1,290,713	329	1,806	818,222	453	31	24,162	779
Westchester	33,353	1,885,242	57	1,487	459,455	309	48	37,043	772
Wyoming	1,155	399,948	346	1,011	466,173	461	18	13,492	750
Yates	885	287,191	325	513	273,822	534	8	6,127	766

\* Please Note: The Home Energy Assistance Program Federal Fiscal Year runs from October 1 through September 30.

Table 27  
**HOME ENERGY ASSISTANCE PROGRAM - EMERGENCY\***  
 Number, Total Dollar Amount and Average Dollar Amount of Benefits Authorized - Federal Fiscal Year to Date  
 July 2021

Local District	Emergency			Furnace Replacement			Furnace Repair, Estimates, and Clean & Tune**		
	Benefits Authorized	Dollar Amount Authorized	Average Dollar Amount	Benefits Authorized	Dollar Amount Authorized	Average Dollar Amount	Benefits Authorized	Dollar Amount Authorized	Average Dollar Amount
New York State	126,079	\$56,398,876	\$447	1,149	\$4,637,577	\$4,036	4,151	\$1,482,707	\$357
New York City	4,809	1,590,690	331	28	172,006	6,143	35	18,727	535
Rest of State	121,270	54,808,186	452	1,121	4,465,571	3,984	4,116	1,463,980	356
Albany	1,739	904,210	520	12	56,594	4,716	40	17,688	442
Allegany	1,024	486,235	475	14	59,644	4,260	51	16,860	331
Broome	2,613	1,443,446	552	23	103,460	4,498	121	50,781	420
Cattaraugus	2,111	909,560	431	27	108,264	4,010	66	22,773	345
Cayuga	1,083	595,945	550	10	31,626	3,163	57	17,351	304
Chautauqua	2,274	887,917	390	24	93,290	3,887	95	25,153	265
Chemung	921	462,960	503	14	56,483	4,035	32	12,471	390
Chenango	907	544,222	600	13	48,840	3,757	47	21,328	454
Clinton	2,648	1,585,912	599	35	132,021	3,772	155	50,044	323
Columbia	832	490,460	589	16	67,521	4,220	57	18,724	328
Cortland	961	492,255	512	11	43,906	3,991	50	10,881	218
Delaware	1,191	685,656	576	13	46,537	3,580	57	20,064	352
Dutchess	1,630	838,792	515	32	156,761	4,899	129	49,177	381
Erie	24,275	5,546,988	229	171	596,585	3,489	304	95,294	313
Essex	411	255,445	622	9	47,431	5,270	28	18,991	678
Franklin	1,919	1,188,025	619	37	138,095	3,732	123	35,057	285
Fulton	1,468	803,770	548	14	50,547	3,611	50	19,254	385
Genesee	440	156,525	356	5	16,114	3,223	16	4,885	305
Greene	1,228	715,106	582	14	59,625	4,259	42	16,988	404
Hamilton	66	42,715	647	0	0	0	10	13,551	1,355
Herkimer	1,717	958,497	558	41	140,818	3,435	108	38,974	361
Jefferson	2,204	1,107,573	503	10	41,030	4,103	54	13,908	258
Lewis	818	454,000	555	4	17,679	4,420	79	20,838	264
Livingston	714	362,570	508	10	41,597	4,160	28	11,052	395
Madison	998	575,705	577	2	7,054	3,527	53	47,909	904
Monroe	5,366	2,565,055	478	53	178,002	3,359	276	65,132	236
Montgomery	1,577	836,320	530	16	67,445	4,215	58	27,984	482
Nassau	999	466,586	467	20	107,616	5,381	68	23,123	340
Niagara	3,155	888,420	282	33	104,604	3,170	87	24,947	287
Oneida	5,868	3,092,096	527	37	119,596	3,232	57	18,132	318
Onondaga	4,233	2,045,554	483	41	124,144	3,028	54	20,455	379
Ontario	700	334,282	478	13	51,405	3,954	36	17,003	472
Orange	3,789	1,890,471	499	15	87,208	5,814	69	29,076	421
Orleans	665	305,034	459	18	70,050	3,892	105	28,698	273
Oswego	2,012	1,117,510	555	1	3,183	3,183	30	11,240	375
Otsego	1,317	812,641	617	14	61,719	4,409	40	14,114	353
Putnam	166	96,915	584	2	7,690	3,845	22	6,049	275
Rensselaer	2,030	1,059,985	522	14	63,452	4,532	47	21,483	457
Rockland	2,003	976,095	487	4	22,439	5,610	21	7,317	348
St. Lawrence	3,890	1,900,626	489	26	94,821	3,647	71	20,620	290
Saratoga	2,591	1,441,279	556	33	139,713	4,234	76	25,437	335
Schenectady	771	372,821	484	3	19,105	6,368	16	4,208	263
Schoharie	902	546,290	606	8	37,117	4,640	36	12,808	356
Schuyler	507	304,425	600	14	83,365	5,955	36	17,485	486
Seneca	406	215,780	531	4	14,179	3,545	36	12,031	334
Steuben	2,709	1,157,620	427	25	97,678	3,907	50	26,887	538
Suffolk	7,721	3,355,637	435	38	204,109	5,371	276	110,208	399
Sullivan	2,381	1,446,570	608	16	66,639	4,165	122	51,792	425
Tioga	1,441	750,996	521	18	66,223	3,679	197	66,249	336
Tompkins	630	346,961	551	8	32,715	4,089	55	23,068	419
Ulster	2,974	1,671,590	562	20	96,472	4,824	83	30,783	371
Warren	1,120	604,840	540	17	74,513	4,383	71	19,325	272
Washington	1,687	928,462	550	21	85,799	4,086	81	28,956	357
Wayne	588	324,590	552	16	66,241	4,140	25	7,022	281
Westchester	261	164,085	629	6	33,704	5,617	15	7,137	476
Wyoming	395	167,065	423	3	10,689	3,563	11	6,017	547
Yates	224	127,096	567	3	12,414	4,138	37	9,198	249

\* Please Note: The Home Energy Assistance Program Federal Fiscal Year runs from October 1 through September 30.

\*\* \$726,631 was authorized for 2,953 Heating Equipment Clean and Tune benefits statewide. The average dollar amount per Clean and Tune benefit was \$246.

Table 28  
**FEDERAL ALL FAMILIES WORK PARTICIPATION RATES**  
TANF, Safety Net Assistance MOE and Combined TANF and Safety Net Assistance MOE  
July 2021

Local District	Combined TANF and Safety Net Assistance MOE			TANF			Safety Net Assistance MOE		
	Rate	Numerator	Denominator	Rate	Numerator	Denominator	Rate	Numerator	Denominator
New York State*	9.9%	6,966	70,448	7.9%	3,081	38,914	12.3%	3,885	31,534
New York City*	10.4%	5,825	56,109	8.0%	2,411	30,051	13.1%	3,414	26,059
Rest of State	5.1%	589	11,544	4.3%	323	7,473	6.5%	266	4,071
Albany	2.0%	4	196	3.1%	4	128	0.0%	0	68
Allegany	0.0%	0	50	0.0%	0	42	0.0%	0	8
Broome	2.7%	10	365	3.3%	8	243	1.6%	2	122
Cattaraugus	1.6%	2	122	1.9%	2	104	0.0%	0	18
Cayuga	3.5%	4	115	1.1%	1	87	10.7%	3	28
Chautauqua	5.5%	22	402	4.2%	12	284	8.5%	10	118
Chemung	1.4%	1	71	1.7%	1	60	0.0%	0	11
Chenango	2.9%	1	35	3.2%	1	31	0.0%	0	4
Clinton	5.1%	4	79	4.8%	3	62	5.9%	1	17
Columbia	2.8%	1	36	3.7%	1	27	0.0%	0	9
Cortland	6.0%	3	50	7.1%	3	42	0.0%	0	8
Delaware	0.0%	0	33	0.0%	0	29	0.0%	0	4
Dutchess	2.3%	3	133	1.9%	2	107	3.8%	1	26
Erie	5.7%	117	2,069	4.3%	56	1,299	7.9%	61	770
Essex	11.1%	1	9	16.7%	1	6	0.0%	0	3
Franklin	2.9%	2	69	1.8%	1	57	8.3%	1	12
Fulton	3.8%	1	26	4.8%	1	21	0.0%	0	5
Genesee	0.0%	0	44	0.0%	0	34	0.0%	0	10
Greene	0.0%	0	21	0.0%	0	17	0.0%	0	4
Hamilton	0.0%	0	1	0.0%	0	1	N/A	0	0
Herkimer	4.8%	3	62	4.1%	2	49	7.7%	1	13
Jefferson	4.7%	9	191	5.1%	7	138	3.8%	2	53
Lewis	0.0%	0	5	0.0%	0	5	N/A	0	0
Livingston	1.4%	1	69	1.9%	1	54	0.0%	0	15
Madison	0.0%	0	37	0.0%	0	30	0.0%	0	7
Monroe	4.2%	60	1,441	3.2%	32	986	6.2%	28	455
Montgomery	7.1%	5	70	2.3%	1	43	14.8%	4	27
Nassau	10.6%	43	407	10.4%	20	192	10.7%	23	215
Niagara	4.7%	11	234	3.6%	6	169	7.7%	5	65
Oneida	5.3%	29	543	3.3%	11	337	8.7%	18	206
Onondaga	5.1%	57	1,113	5.0%	35	705	5.4%	22	408
Ontario	3.3%	3	90	2.8%	2	72	5.6%	1	18
Orange	10.2%	26	254	13.1%	18	137	6.8%	8	117
Orleans	8.8%	7	80	7.7%	5	65	13.3%	2	15
Oswego	3.4%	8	238	2.3%	4	172	6.1%	4	66
Otsego	0.0%	0	21	0.0%	0	17	0.0%	0	4
Putnam	0.0%	0	1	0.0%	0	1	N/A	0	0
Rensselaer	4.0%	8	198	1.8%	2	113	7.1%	6	85
Rockland	12.9%	9	70	10.2%	5	49	19.0%	4	21
St. Lawrence	3.3%	4	121	4.3%	3	70	2.0%	1	51
Saratoga	0.0%	0	20	0.0%	0	18	0.0%	0	2
Schenectady	1.6%	3	186	1.8%	2	110	1.3%	1	76
Schoharie	0.0%	0	11	0.0%	0	9	0.0%	0	2
Schuyler	0.0%	0	7	0.0%	0	3	0.0%	0	4
Seneca	3.7%	1	27	5.6%	1	18	0.0%	0	9
Steuben	5.4%	5	92	4.2%	3	71	9.5%	2	21
Suffolk	7.5%	57	755	7.3%	30	412	7.9%	27	343
Sullivan	5.5%	4	73	0.0%	0	49	16.7%	4	24
Tioga	4.5%	1	22	0.0%	0	16	16.7%	1	6
Tompkins	1.2%	1	81	1.6%	1	62	0.0%	0	19
Ulster	2.5%	3	120	2.8%	2	72	2.1%	1	48
Warren	5.6%	1	18	6.3%	1	16	0.0%	0	2
Washington	0.0%	0	44	0.0%	0	41	0.0%	0	3
Wayne	2.9%	2	69	3.3%	2	60	0.0%	0	9
Westchester	6.3%	51	805	7.7%	30	391	5.1%	21	414
Wyoming	4.3%	1	23	0.0%	0	21	50.0%	1	2
Yates	0.0%	0	20	0.0%	0	19	0.0%	0	1

\* Statewide and New York City participation rates are estimated from federal disaggregated reporting samples, which are the source of the rates used by the United States Department of Health and Human Services to determine if a state has met participation goals. Because the sample size is insufficient to permit rate estimates for non-New York City districts, rates for those districts are derived directly from automated systems data. Thus, Rest of State and New York City numerators and denominators will not sum to the statewide total. Estimates are from the latest available quarterly sample.

Table 29  
**WORK SANCTION STATUS BY PRESENCE IN FEDERAL ALL FAMILIES WORK PARTICIPATION CALCULATION**  
**TANF, Safety Net Assistance MOE and Combined TANF and Safety Net Assistance MOE**  
**July 2021**

Local District	Combined TANF and Safety Net Assistance MOE		TANF		Safety Net Assistance MOE	
	Sanctioned in the Denominator	Sanctioned Removed From Denominator	Sanctioned in the Denominator	Sanctioned Removed From Denominator	Sanctioned in the Denominator	Sanctioned Removed From Denominator
New York State*	487	104	111	0	375	104
New York City*	225	52	111	0	114	52
Rest of State	213	111	71	72	142	39
Albany	11	0	1	0	10	0
Allegany	0	1	0	1	0	0
Broome	28	0	5	0	23	0
Cattaraugus	3	1	2	1	1	0
Cayuga	1	4	1	2	0	2
Chautauqua	7	6	2	6	5	0
Chemung	2	0	1	0	1	0
Chenango	1	1	1	0	0	1
Clinton	1	0	1	0	0	0
Columbia	0	1	0	1	0	0
Cortland	0	0	0	0	0	0
Delaware	0	0	0	0	0	0
Dutchess	0	1	0	1	0	0
Erie	10	18	2	11	8	7
Essex	0	0	0	0	0	0
Franklin	0	1	0	1	0	0
Fulton	0	0	0	0	0	0
Genesee	1	1	0	1	1	0
Greene	2	0	2	0	0	0
Hamilton	0	0	0	0	0	0
Herkimer	4	0	1	0	3	0
Jefferson	6	0	3	0	3	0
Lewis	0	0	0	0	0	0
Livingston	3	2	3	2	0	0
Madison	0	0	0	0	0	0
Monroe	41	29	14	20	27	9
Montgomery	3	1	0	1	3	0
Nassau	3	0	2	0	1	0
Niagara	15	10	3	9	12	1
Oneida	2	2	0	2	2	0
Onondaga	13	6	3	1	10	5
Ontario	2	2	1	0	1	2
Orange	4	1	2	1	2	0
Orleans	2	0	1	0	1	0
Oswego	1	2	1	2	0	0
Otsego	0	0	0	0	0	0
Putnam	0	0	0	0	0	0
Rensselaer	1	0	1	0	0	0
Rockland	3	1	1	0	2	1
St. Lawrence	5	6	2	4	3	2
Saratoga	1	0	1	0	0	0
Schenectady	13	3	3	1	10	2
Schoharie	0	0	0	0	0	0
Schuyler	0	0	0	0	0	0
Seneca	0	1	0	1	0	0
Steuben	1	1	1	1	0	0
Suffolk	4	2	2	1	2	1
Sullivan	2	1	1	1	1	0
Tioga	0	1	0	0	0	1
Tompkins	5	0	1	0	4	0
Ulster	7	0	3	0	4	0
Warren	0	1	0	0	0	1
Washington	0	0	0	0	0	0
Wayne	2	0	2	0	0	0
Westchester	2	4	1	0	1	4
Wyoming	1	0	0	0	1	0
Yates	0	0	0	0	0	0

\* Statewide and New York City sanction rates are estimated from federal disaggregated reporting samples, which are the source of such data used by the United States Department of Health and Human Services to determine if a state has met participation goals. Because the sample size is insufficient to permit sanction estimates for non-New York City districts, data for those districts are derived directly from automated systems. Thus, Rest of State and New York City counts may not sum to the statewide total. This table uses a federal definition of sanction and includes only persons who are deemed a work eligible individual and are sanctioned for non-compliance for work or substance abuse requirements. Estimates are from the latest available quarterly sample.

Table 30  
**TEMPORARY ASSISTANCE CASES WITH EARNED INCOME**  
Cases, Average Gross Earned Income and Average Net Earned Income after Application of Disregards  
July 2021

Local District	TANF			Safety Net Assistance MOE			Safety Net Assistance Non-MOE		
	Cases	Average Gross Earned Income	Average Net Earned Income	Cases	Average Gross Earned Income	Average Net Earned Income	Cases	Average Gross Earned Income	Average Net Earned Income
New York State	5,046	\$1,345	\$660	4,538	\$1,247	\$550	6,568	\$1,636	\$1,124
New York City	4,285	1,408	702	3,965	1,261	557	6,104	1,686	1,167
Rest of State	761	987	424	573	1,152	503	464	983	549
Albany	12	1,101	469	3	694	272	9	1,497	748
Allegany	2	529	194	2	132	39	1	211	106
Broome	9	517	192	10	1,279	535	12	255	111
Cattaraugus	6	824	512	1	724	286	5	161	48
Cayuga	4	839	337	4	1,070	451	4	828	508
Chautauqua	20	789	315	17	880	356	10	1,218	600
Chemung	4	763	306	0	0	0	2	175	85
Chenango	2	1,080	446	0	0	0	0	0	0
Clinton	7	860	347	3	807	323	3	385	136
Columbia	2	1,631	890	0	0	0	0	0	0
Cortland	1	195	47	1	165	34	3	270	175
Delaware	1	922	374	0	0	0	1	190	100
Dutchess	13	921	381	2	2,049	882	10	750	551
Erie	79	930	378	117	1,172	489	67	1,303	580
Essex	0	0	0	0	0	0	0	0	0
Franklin	1	697	273	5	578	222	6	266	187
Fulton	0	0	0	1	260	77	2	491	227
Genesee	2	342	120	0	0	0	1	87	0
Greene	1	944	384	0	0	0	5	629	508
Hamilton	0	0	0	0	0	0	0	0	0
Herkimer	3	469	178	1	1,365	574	3	538	453
Jefferson	15	881	356	8	636	246	11	506	233
Lewis	0	0	0	0	0	0	0	0	0
Livingston	2	767	305	0	0	0	5	403	198
Madison	0	0	0	0	0	0	0	0	0
Monroe	64	904	384	67	1,045	432	36	887	491
Montgomery	4	1,106	457	8	817	328	5	523	324
Nassau	75	1,251	533	35	1,507	713	50	1,255	862
Niagara	12	700	279	8	861	347	4	354	127
Oneida	17	992	407	45	1,007	413	13	639	294
Onondaga	71	792	317	62	1,090	451	30	1,103	506
Ontario	5	724	300	2	2,534	1,473	5	1,442	1,014
Orange	22	962	390	19	1,136	471	6	1,320	835
Orleans	4	1,239	517	1	1,512	640	2	182	123
Oswego	7	530	198	1	19	0	15	531	219
Otsego	3	721	284	0	0	0	0	0	0
Putnam	0	0	0	0	0	0	0	0	0
Rensselaer	11	870	353	14	852	343	3	1,019	519
Rockland	38	951	392	5	1,111	461	12	1,649	700
St. Lawrence	3	643	249	5	523	239	5	824	484
Saratoga	0	0	0	0	0	0	1	976	886
Schenectady	11	705	277	4	681	271	5	1,719	988
Schoharie	0	0	0	0	0	0	3	103	43
Schuyler	0	0	0	0	0	0	1	87	0
Seneca	2	893	361	0	0	0	3	531	227
Steuben	5	812	325	4	532	369	10	418	215
Suffolk	76	1,200	554	56	1,617	793	54	1,287	859
Sullivan	6	646	256	3	1,089	450	4	523	356
Tioga	0	0	0	0	0	0	1	130	40
Tompkins	2	679	265	0	0	0	1	1,698	1,608
Ulster	4	891	361	6	1,073	443	8	902	388
Warren	1	1,192	496	0	0	0	0	0	0
Washington	2	689	270	0	0	0	3	747	296
Wayne	5	864	348	1	220	130	2	149	85
Westchester	123	1,179	552	52	1,320	617	21	869	533
Wyoming	0	0	0	0	0	0	0	0	0
Yates	2	1,083	454	0	0	0	1	2,863	2,232