

NEW YORK STATE  
OFFICE OF TEMPORARY AND DISABILITY ASSISTANCE  
40 North Pearl Street, Albany, New York 12243-0001

George E. Pataki  
*Governor*

Brian J. Wing  
*Commissioner*

---

# Temporary and Disability Assistance Statistics

## December 2001

---

### Temporary Assistance

Temporary Assistance recipients totaled 655,280 in December 2001, decreasing 3,880 (-0.6%) from the previous month. Expenditures for Temporary Assistance totaled \$139,999,109 in December, decreasing \$1.7 million (-1.2%) from November. **(NOTE: December 2001 was the first month where TANF cases in New York State began exceeding their 60-month limit on federally funded cash assistance. Some caseload trends and the composition of some tables in this report will be affected by this occurrence. See full explanation on page 3.)**

For the Calendar Year 2001, Temporary Assistance expenditures totaled \$1.8 billion with a monthly average recipient count of 688,547. Current year costs decreased \$179.5 million (-9.2%) from 2000, while the monthly average number of individuals decreased 105,956 (-13.3%) in CY 2001.

### Food Stamps

Individuals receiving Food Stamps benefits totaled 1,309,928 in December 2001, decreasing 8,656 (-0.7%) from the previous month. Total value of Food Stamps benefits was \$123,809,024 in December, increasing only \$338,590 (+0.3%) over November.

For the Calendar Year 2001, Food Stamps recipients averaged 1,317,463, decreasing 58,571 (-4.3%) from the previous year's monthly average. Total expenditures for CY 2001 were \$1.4 billion, increasing only \$50.8 million (+3.8%) over the previous year.

### Supplemental Security Income

For the month of December 2001, SSI recipients (including Mental Hygiene) totaled 625,239, decreasing 1,773 (-0.3%) from the previous month. Expenditures for December totaled \$283,969,607, increasing \$1.0 million (+0.4%) over November 2001.

Year-end totals for 2001 for the SSI Program were as follows: monthly average recipients: 624,971; total expenditures: \$3,393,536,364. These were an increase of +1.4% for recipients and an increase of +4.5% for expenditures over CY 2000.

**Note: Annual 2001 tables are contained in this issue.**

# Table of Contents

## Page Number

60-Month Limit Notice.....	3
Graphs.....	5
Summary Tables.....	6
Temporary Assistance by Program Area.....	7
Temporary Assistance by Funding Source.....	11
Other Programs.....	19
2001 Summary.....	23

# NOTICE

## **Changes in Caseload Trends and Reporting Tables Related to Cases Reaching The 60-Month Time Limit**

### **Caseload Trends**

December 2001 was the first month where TANF (Family Assistance and Safety Net - FNP) cases in New York State exhausted their 60-month limit on federally funded cash assistance. As a result, a significant number of cases transferred from federally funded assistance categories to those financed entirely by the State and its localities. While these transfers will not affect the trend in overall Temporary Assistance recipient and case counts, significant shifts from the previous month will occur within the various case types, primarily through a movement of cases from Family Assistance to the Safety Net - FNP categories. Such transfers will continue to occur in subsequent months as more TANF cases reach the 60-month limit. However, based on our observations regarding the number of cases approaching the time limit, the maximum number of these transfers will be substantially smaller in the coming months, and is expected to rapidly diminish to a constant and relatively low level. Interpretation of caseload trends should be made with this information in mind.

### **Changes In Reporting Tables**

To accommodate changes related to cases reaching the time limit, we have revised the structure of Tables 11, 13, and 15 of this report to provide more useful information regarding persons exceeding the 60-month time limit. Previously, these tables reported cases, recipients, children, adults and expenditures for all Safety Net - FNP Assistance (Table 11), and the two subcategories of Safety Net - FNP Assistance, Safety Net - FNP-Cash (Table 13) and Safety Net - FNP - Non-Cash (Table 15), and divided each of these tables into one-person and multi-person cases. Before the onset of TANF, these tables were used to distinguish two groups subject to different policies: single adult cases and cases consisting of families with children. At that time, many families were served under the previous Home Relief program, since under the former AFDC program, most two-parent family cases were not eligible for federal assistance. With the onset of TANF, two-parent families become eligible for federal assistance and moved predominantly into the Family Assistance case type, thus eroding the usefulness of the one-person/multi-person distinction in these tables.

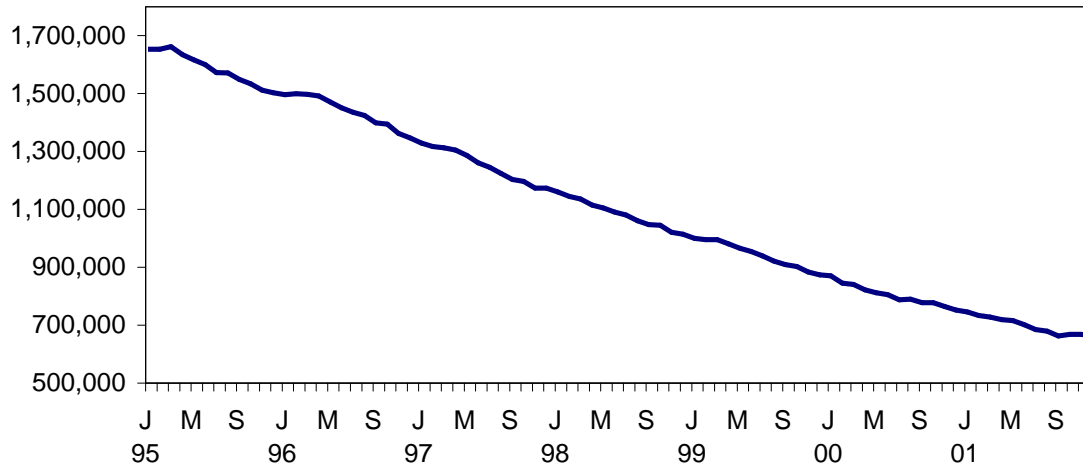
# NOTICE

## **Changes in Caseload Trends and Reporting Tables Related to Cases Reaching The 60-Month Time Limit (Cont'd.)**

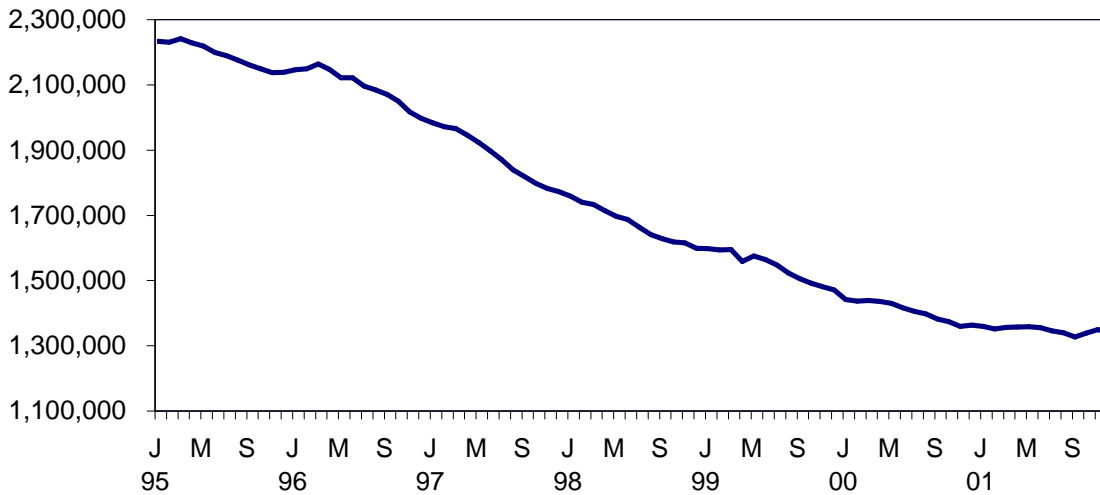
For this report, and those to follow, Tables 11, 13, and 15 will be divided not by case size, but by whether or not the expenditures for the case count toward the State's maintenance of effort (MOE) requirement for drawing down federal TANF dollars. For the most part, the MOE cases are those where an adult on the case has exceeded the 60-month limit on federal assistance and then transferred to the Safety Net - FNP category. By dividing the tables in this way, trends in MOE expenditures will be easier to track. Also, because the MOE classification will contain most of the family (adults with children) cases in the Safety Net - FNP categories, and the non-MOE cases will be predominantly childless singles or couples, observers will be able to separately track categories of cases that are distinct in terms of the policies applied to them.

# NEW YORK STATE JANUARY 1995 - DECEMBER 2001

## TEMPORARY ASSISTANCE RECIPIENTS

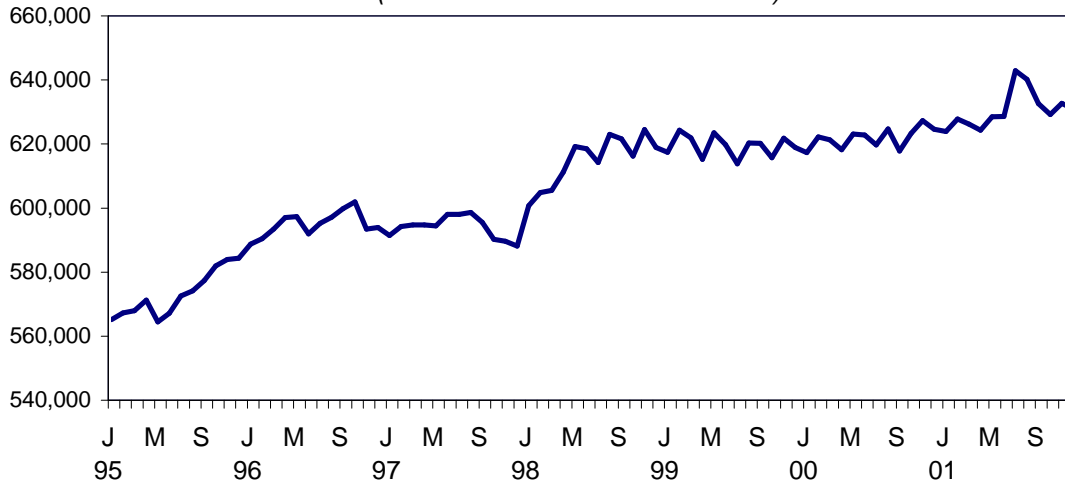


## FOOD STAMPS PERSONS



## SSI PERSONS

(INCLUDING MENTAL HYGIENE)



SELECTED SUMMARY PROGRAM DATA  
BY REGION

Table 1  
TEMPORARY AND DISABILITY ASSISTANCE CASES  
December 2001  
(See NOTICE, page 3)

Region	Cases				
	Temporary Assistance by Program			Supplemental Security Income	Food Stamps
	Total	Family Assistance	Safety Net Assistance		
New York State	309,488	177,064	132,424	615,149	661,598
New York City	220,211	121,212	98,999	397,389	415,995
Rest of State	89,277	55,852	33,425	217,760	245,603

Table 2  
TEMPORARY AND DISABILITY ASSISTANCE RECIPIENTS  
December 2001  
(See NOTICE, page 3)

Region	Recipients				
	Temporary Assistance by Program			Supplemental Security Income	Food Stamps
	Total	Family Assistance	Safety Net Assistance		
New York State	655,280	443,664	211,616	615,149	1,309,928
New York City	462,069	300,214	161,855	397,389	798,404
Rest of State	193,211	143,450	49,761	217,760	511,524

Table 3  
TEMPORARY AND DISABILITY ASSISTANCE EXPENDITURES  
December 2001  
(See NOTICE, page 3)

Region	Expenditures				
	Temporary Assistance by Program			Supplemental Security Income	Food Stamps
	Total	Family Assistance	Safety Net Assistance		
New York State	\$139,999,079	\$89,271,840	\$50,727,239	\$280,512,345	\$123,809,024
New York City	94,397,000	59,355,000	35,042,000	187,171,711	82,482,221
Rest of State	45,602,079	29,916,840	15,685,239	93,340,634	41,326,803

Note: SSI data listed here do not include Mental Hygiene data. See Tables 17 - 19 for total SSI data.

Table 4  
**TEMPORARY ASSISTANCE**  
 Year to Year Monthly Comparison by Local District  
 Cases, Recipients and Expenditures  
 December 2001

Local District	December 2001			December 2000			December 1999		
	Cases	Recipients	Expenditures	Cases	Recipients	Expenditures	Cases	Recipients	Expenditures
New York State	309,488	655,280	\$139,999,109	344,871	742,731	\$155,700,925	394,737	865,249	\$ 174,974,829
New York City*	220,211	462,069	94,397,000	252,011	537,473	107,108,000	286,199	621,902	120,545,000
Rest of State	89,277	193,211	45,602,109	92,860	205,258	48,592,925	108,538	243,347	54,429,829
Albany	3,484	7,493	1,925,650	3,312	7,457	1,782,201	3,556	8,075	1,884,151
Allegany	479	1,108	181,398	511	1,136	196,972	644	1,546	242,247
Broome	1,893	4,006	858,864	1,969	4,366	872,509	2,461	5,714	1,109,793
Cattaraugus	637	1,338	248,003	615	1,299	254,118	731	1,580	281,588
Cayuga	415	912	180,218	398	873	168,490	449	986	187,801
Chautauqua	2,233	4,819	952,083	1,986	4,303	869,593	2,246	5,041	960,428
Chemung	890	2,014	372,493	802	1,872	326,711	947	2,255	361,179
Chenango	234	483	90,718	237	536	105,157	265	590	111,618
Clinton	602	1,107	257,541	558	1,091	239,019	561	1,085	215,221
Columbia	356	664	154,585	365	733	143,153	412	845	165,079
Cortland	437	947	203,345	403	909	192,417	419	967	211,833
Delaware	181	341	82,468	189	357	77,560	216	420	108,209
Dutchess	1,214	2,298	735,778	1,314	2,614	653,755	1,557	3,265	743,174
Erie	12,744	28,692	4,907,811	15,095	33,937	6,590,420	18,245	40,974	7,454,922
Essex	189	389	69,445	210	404	93,582	252	514	93,557
Franklin	298	570	122,598	289	577	114,400	361	699	132,659
Fulton	383	705	156,168	372	717	156,607	434	893	170,742
Genesee	290	613	128,030	272	574	111,424	290	655	138,643
Greene	435	871	202,300	415	815	185,521	401	846	161,279
Hamilton	14	22	5,092	10	18	3,667	12	15	6,288
Herkimer	330	663	141,352	309	641	120,005	388	872	144,496
Jefferson	993	2,041	425,866	1,057	2,215	462,605	1,279	2,769	590,319
Lewis	115	224	40,380	126	244	45,725	161	354	55,200
Livingston	583	1,130	256,189	466	931	210,696	496	1,016	216,171
Madison	159	287	67,261	167	310	67,508	186	343	84,237
Monroe	13,910	31,706	6,588,031	14,701	33,853	7,268,377	17,429	40,499	8,945,974
Montgomery	312	667	165,451	279	561	135,685	297	647	129,151
Nassau	4,257	8,500	2,525,698	4,547	9,300	2,428,194	5,527	11,362	3,164,925
Niagara	2,417	5,286	974,485	2,478	5,108	1,013,292	2,853	6,016	1,104,865
Oneida	2,233	5,463	985,623	2,348	5,911	1,013,060	2,863	7,203	1,235,792
Onondaga	6,193	13,484	2,659,081	5,693	12,946	2,467,947	6,123	14,339	2,644,835
Ontario	604	1,135	266,596	528	1,010	247,471	549	1,085	234,560
Orange	2,589	6,409	1,338,301	3,060	7,985	1,886,800	3,221	8,189	2,035,717
Orleans	488	1,094	230,041	455	1,050	223,191	469	1,081	242,255
Oswego	752	1,573	346,020	785	1,826	359,395	926	2,173	414,357
Otsego	116	183	53,111	109	180	53,055	120	218	77,060
Putnam	109	171	62,365	110	193	72,567	119	198	81,857
Rensselaer	1,244	2,784	611,535	1,136	2,537	515,599	1,287	2,899	583,905
Rockland	1,131	3,135	621,262	1,141	3,428	685,492	1,404	3,905	775,425
St.Lawrence	1,035	2,047	406,668	1,049	2,169	397,846	1,282	2,726	508,770
Saratoga	249	393	105,360	225	350	107,547	268	445	132,807
Schenectady	1,076	2,163	558,143	974	2,227	466,280	1,173	2,786	550,760
Schoharie	100	183	53,563	82	139	34,334	91	183	43,968
Schuyler	133	278	57,673	124	248	50,448	101	210	40,442
Seneca	148	304	67,318	191	382	76,651	170	357	72,004
Steuben	816	1,611	326,037	787	1,594	335,854	1,120	2,357	461,722
Suffolk	6,553	13,406	4,460,755	6,917	14,407	5,135,604	7,923	17,019	5,012,485
Sullivan	557	1,184	257,677	531	1,111	239,453	578	1,315	290,662
Tioga	315	664	140,934	308	641	132,269	346	768	134,966
Tompkins	645	1,224	328,510	641	1,265	335,512	733	1,443	360,182
Ulster	1,204	2,412	669,272	1,181	2,442	594,443	1,419	2,856	656,373
Warren	258	475	133,705	246	489	111,131	226	420	110,220
Washington	345	571	165,902	322	590	154,177	371	710	164,694
Wayne	453	803	214,593	445	878	188,942	581	1,272	248,919
Westchester	9,168	19,680	7,354,795	9,745	21,005	7,712,770	11,697	25,768	8,014,640
Wyoming	191	349	75,715	184	340	68,464	204	382	82,230
Yates	88	137	32,253	91	164	37,260	99	197	42,473

\* Expenditures partially estimated.

Table 5  
**TEMPORARY ASSISTANCE**  
Cases, Recipients, Children, Adults and Expenditures by Local District  
December 2001

Local District	Temporary Assistance				
	Cases	Recipients	Children	Adults	Expenditures
New York State	309,488	655,280	388,517	266,763	\$139,999,079
New York City*	220,211	462,069	268,754	193,315	94,397,000
Rest of State	89,277	193,211	119,763	73,448	45,602,079
Albany	3,484	7,493	4,478	3,015	1,925,650
Allegany	479	1,108	678	430	181,398
Broome	1,893	4,006	2,493	1,513	858,864
Cattaraugus	637	1,338	814	524	248,003
Cayuga	415	912	601	311	180,218
Chautauqua	2,233	4,819	2,879	1,940	952,053
Chemung	890	2,014	1,307	707	372,493
Chenango	234	483	325	158	90,718
Clinton	602	1,107	640	467	257,541
Columbia	356	664	407	257	154,585
Cortland	437	947	549	398	203,345
Delaware	181	341	219	122	82,468
Dutchess	1,214	2,298	1,497	801	735,778
Erie	12,744	28,692	17,857	10,835	4,907,811
Essex	189	389	221	168	69,445
Franklin	298	570	343	227	122,598
Fulton	383	705	399	306	156,168
Genesee	290	613	380	233	128,030
Greene	435	871	494	377	202,300
Hamilton	14	22	9	13	5,092
Herkimer	330	663	421	242	141,352
Jefferson	993	2,041	1,144	897	425,866
Lewis	115	224	136	88	40,380
Livingston	583	1,130	575	555	256,189
Madison	159	287	214	73	67,261
Monroe	13,910	31,706	19,961	11,745	6,588,031
Montgomery	312	667	406	261	165,451
Nassau	4,257	8,500	5,493	3,007	2,525,698
Niagara	2,417	5,286	3,229	2,057	974,485
Oneida	2,233	5,463	3,539	1,924	985,623
Onondaga	6,193	13,484	8,476	5,008	2,659,081
Ontario	604	1,135	639	496	266,596
Orange	2,589	6,409	4,291	2,118	1,338,301
Orleans	488	1,094	649	445	230,041
Oswego	752	1,573	1,025	548	346,020
Otsego	116	183	112	71	53,111
Putnam	109	171	94	77	62,365
Rensselaer	1,244	2,784	1,718	1,066	611,535
Rockland	1,131	3,135	2,093	1,042	621,262
St.Lawrence	1,035	2,047	1,169	878	406,668
Saratoga	249	393	292	101	105,360
Schenectady	1,076	2,163	1,456	707	558,143
Schoharie	100	183	117	66	53,563
Schuyler	133	278	162	116	57,673
Seneca	148	304	192	112	67,318
Steuben	816	1,611	923	688	326,037
Suffolk	6,553	13,406	8,289	5,117	4,460,755
Sullivan	557	1,184	783	401	257,677
Tioga	315	664	413	251	140,934
Tompkins	645	1,224	679	545	328,510
Ulster	1,204	2,412	1,565	847	669,272
Warren	258	475	259	216	133,705
Washington	345	571	320	251	165,902
Wayne	453	803	489	314	214,593
Westchester	9,168	19,680	11,586	8,094	7,354,795
Wyoming	191	349	192	157	75,715
Yates	88	137	72	65	32,253

\* Expenditures partially estimated.



Table 6  
**FAMILY ASSISTANCE**  
Cases, Recipients, Children, Adults and Expenditures by Local District  
December 2001  
(See NOTICE, page 3)

Local District	Family Assistance				
	Cases	Recipients	Children	Adults	Expenditures
New York State	177,064	443,664	315,622	128,042	\$89,271,840
New York City*	121,212	300,214	211,928	88,286	59,355,000
Rest of State	55,852	143,450	103,694	39,756	29,916,840
Albany	2,330	6,091	4,239	1,852	1,307,615
Allegany	339	888	608	280	132,867
Broome	1,252	3,086	2,223	863	581,864
Cattaraugus	428	1,075	766	309	170,343
Cayuga	320	775	559	216	135,728
Chautauqua	1,503	3,829	2,617	1,212	711,675
Chemung	666	1,711	1,225	486	275,726
Chenango	175	409	310	99	68,413
Clinton	369	827	590	237	155,154
Columbia	244	535	388	147	112,257
Cortland	293	772	516	256	138,028
Delaware	124	277	213	64	51,685
Dutchess	774	1,740	1,349	391	407,497
Erie	7,827	20,813	15,008	5,805	3,243,389
Essex	123	306	204	102	50,722
Franklin	198	436	314	122	78,445
Fulton	255	569	394	175	99,500
Genesee	177	484	358	126	80,989
Greene	283	685	458	227	141,827
Hamilton	8	16	9	7	3,257
Herkimer	238	555	398	157	102,539
Jefferson	594	1,515	1,030	485	261,099
Lewis	77	175	124	51	27,513
Livingston	352	854	530	324	164,466
Madison	123	250	208	42	53,416
Monroe	7,939	21,620	15,869	5,751	4,016,032
Montgomery	203	553	401	152	98,767
Nassau	2,710	6,317	4,854	1,463	1,751,030
Niagara	1,544	3,837	2,661	1,176	610,208
Oneida	1,518	4,389	3,183	1,206	683,477
Onondaga	4,133	10,913	7,910	3,003	1,899,942
Ontario	358	820	572	248	152,055
Orange	1,784	4,821	3,555	1,266	984,247
Orleans	331	870	584	286	154,979
Oswego	554	1,325	972	353	253,824
Otsego	63	118	102	16	24,396
Putnam	59	115	85	30	33,555
Rensselaer	916	2,392	1,663	729	427,653
Rockland	601	1,906	1,478	428	331,174
St.Lawrence	683	1,576	1,046	530	280,076
Saratoga	170	306	276	30	70,855
Schenectady	737	1,716	1,331	385	376,278
Schoharie	63	139	111	28	28,962
Schuyler	92	232	160	72	39,580
Seneca	101	243	175	68	43,707
Steuben	504	1,241	866	375	200,297
Suffolk	3,651	9,369	7,110	2,259	3,046,207
Sullivan	412	1,015	759	256	197,510
Tioga	237	557	386	171	105,575
Tompkins	394	926	630	296	200,026
Ulster	861	1,955	1,439	516	498,835
Warren	161	363	246	117	78,625
Washington	211	415	289	126	102,425
Wayne	270	609	470	139	137,647
Westchester	5,357	13,760	9,624	4,136	4,467,075
Wyoming	117	266	182	84	47,462
Yates	46	93	67	26	18,345

\* Expenditures partially estimated.

Table 7  
**SAFETY NET ASSISTANCE**  
Cases, Recipients, Children, Adults and Expenditures by Local District  
December 2001  
**(See NOTICE, page 3)**

Local District	Safety Net Assistance				
	Cases	Recipients	Children	Adults	Expenditures
New York State	132,424	211,616	72,895	138,721	\$50,727,239
New York City*	98,999	161,855	56,826	105,029	35,042,000
Rest of State	33,425	49,761	16,069	33,692	15,685,239
Albany	1,154	1,402	239	1,163	618,035
Allegany	140	220	70	150	48,531
Broome	641	920	270	650	277,000
Cattaraugus	209	263	48	215	77,660
Cayuga	95	137	42	95	44,490
Chautauqua	730	990	262	728	240,378
Chemung	224	303	82	221	96,767
Chenango	59	74	15	59	22,305
Clinton	233	280	50	230	102,387
Columbia	112	129	19	110	42,328
Cortland	144	175	33	142	65,317
Delaware	57	64	6	58	30,783
Dutchess	440	558	148	410	328,281
Erie	4,917	7,879	2,849	5,030	1,664,422
Essex	66	83	17	66	18,723
Franklin	100	134	29	105	44,153
Fulton	128	136	5	131	56,668
Genesee	113	129	22	107	47,041
Greene	152	186	36	150	60,473
Hamilton	6	6	0	6	1,835
Herkimer	92	108	23	85	38,813
Jefferson	399	526	114	412	164,767
Lewis	38	49	12	37	12,867
Livingston	231	276	45	231	91,723
Madison	36	37	6	31	13,845
Monroe	5,971	10,086	4,092	5,994	2,571,999
Montgomery	109	114	5	109	66,684
Nassau	1,547	2,183	639	1,544	774,668
Niagara	873	1,449	568	881	364,277
Oneida	715	1,074	356	718	302,146
Onondaga	2,060	2,571	566	2,005	759,139
Ontario	246	315	67	248	114,541
Orange	805	1,588	736	852	354,054
Orleans	157	224	65	159	75,062
Oswego	198	248	53	195	92,196
Otsego	53	65	10	55	28,715
Putnam	50	56	9	47	28,810
Rensselaer	328	392	55	337	183,882
Rockland	530	1,229	615	614	290,088
St.Lawrence	352	471	123	348	126,592
Saratoga	79	87	16	71	34,505
Schenectady	339	447	125	322	181,865
Schoharie	37	44	6	38	24,601
Schuyler	41	46	2	44	18,093
Seneca	47	61	17	44	23,611
Steuben	312	370	57	313	125,740
Suffolk	2,902	4,037	1,179	2,858	1,414,548
Sullivan	145	169	24	145	60,167
Tioga	78	107	27	80	35,359
Tompkins	251	298	49	249	128,484
Ulster	343	457	126	331	170,437
Warren	97	112	13	99	55,080
Washington	134	156	31	125	63,477
Wayne	183	194	19	175	76,946
Westchester	3,811	5,920	1,962	3,958	2,887,720
Wyoming	74	83	10	73	28,253
Yates	42	44	5	39	13,908

\* Expenditures partially estimated.

Table 8  
**TEMPORARY ASSISTANCE BY FUNDING SOURCE**  
 Cases, Recipients and Expenditures by Local District  
 December 2001  
 (See NOTICE, page 3)

Local District	Total			Federally Participating - TANF Family Assistance and Safety Net - FP			Federally Non-Participating Safety Net Assistance - FNP		
	Cases	Recipients	Expenditures	Cases	Recipients	Expenditures	Cases	Recipients	Expenditures
New York State	309,488	655,280	\$139,999,079	178,573	447,729	\$90,151,588	130,915	207,551	\$49,847,491
New York City*	220,211	462,069	94,397,000	121,351	300,532	59,390,000	98,860	161,537	35,007,000
Rest of State	89,277	193,211	45,602,079	57,222	147,197	30,761,588	32,055	46,014	14,840,491
Albany	3,484	7,493	1,925,650	2,352	6,149	1,318,767	1,132	1,344	606,883
Allegany	479	1,108	181,398	339	888	132,867	140	220	48,531
Broome	1,893	4,006	858,864	1,286	3,166	596,658	607	840	262,206
Cattaraugus	637	1,338	248,003	438	1,102	173,244	199	236	74,759
Cayuga	415	912	180,218	328	791	139,870	87	121	40,348
Chautauqua	2,233	4,819	952,053	1,528	3,891	720,872	705	928	231,181
Chemung	890	2,014	372,493	670	1,722	277,387	220	292	95,106
Chenango	234	483	90,718	177	416	69,160	57	67	21,558
Clinton	602	1,107	257,541	378	844	161,001	224	263	96,540
Columbia	356	664	154,585	244	535	112,257	112	129	42,328
Cortland	437	947	203,345	301	795	141,048	136	152	62,297
Delaware	181	341	82,468	125	278	52,699	56	63	29,769
Dutchess	1,214	2,298	735,778	800	1,781	422,202	414	517	313,576
Erie	12,744	28,692	4,907,811	8,072	21,502	3,339,992	4,672	7,190	1,567,819
Essex	189	389	69,445	126	316	51,271	63	73	18,174
Franklin	298	570	122,598	200	440	80,997	98	130	41,601
Fulton	383	705	156,168	257	575	100,569	126	130	55,599
Genesee	290	613	128,030	182	497	85,067	108	116	42,963
Greene	435	871	202,300	283	685	141,827	152	186	60,473
Hamilton	14	22	5,092	8	16	3,257	6	6	1,835
Herkimer	330	663	141,352	240	561	103,174	90	102	38,178
Jefferson	993	2,041	425,866	609	1,567	269,464	384	474	156,402
Lewis	115	224	40,380	77	175	27,513	38	49	12,867
Livingston	583	1,130	256,189	367	891	172,771	216	239	83,418
Madison	159	287	67,261	123	250	53,416	36	37	13,845
Monroe	13,910	31,706	6,588,031	8,436	22,993	4,291,080	5,474	8,713	2,296,951
Montgomery	312	667	165,451	203	553	98,767	109	114	66,684
Nassau	4,257	8,500	2,525,698	2,746	6,407	1,779,543	1,511	2,093	746,155
Niagara	2,417	5,286	974,485	1,590	3,985	632,899	827	1,301	341,586
Oneida	2,233	5,463	985,623	1,546	4,469	703,219	687	994	282,404
Onondaga	6,193	13,484	2,659,081	4,152	10,964	1,910,656	2,041	2,520	748,425
Ontario	604	1,135	266,596	364	840	161,442	240	295	105,154
Orange	2,589	6,409	1,338,301	1,809	4,888	1,000,625	780	1,521	337,676
Orleans	488	1,094	230,041	337	885	156,792	151	209	73,249
Oswego	752	1,573	346,020	561	1,345	256,515	191	228	89,505
Otsego	116	183	53,111	68	128	28,017	48	55	25,094
Putnam	109	171	62,365	62	121	38,245	47	50	24,120
Rensselaer	1,244	2,784	611,535	922	2,412	430,532	322	372	181,003
Rockland	1,131	3,135	621,262	616	1,948	338,604	515	1,187	282,658
St. Lawrence	1,035	2,047	406,668	686	1,591	280,847	349	456	125,821
Saratoga	249	393	105,360	170	306	70,855	79	87	34,505
Schenectady	1,076	2,163	558,143	749	1,745	383,287	327	418	174,856
Schoharie	100	183	53,563	63	139	28,962	37	44	24,601
Schuyler	133	278	57,673	92	232	39,580	41	46	18,093
Seneca	148	304	67,318	103	248	45,056	45	56	22,262
Steuben	816	1,611	326,037	510	1,255	203,066	306	356	122,971
Suffolk	6,553	13,406	4,460,755	3,719	9,574	3,129,751	2,834	3,832	1,331,004
Sullivan	557	1,184	257,677	412	1,015	197,510	145	169	60,167
Tioga	315	664	140,934	239	563	106,790	76	101	34,144
Tompkins	645	1,224	328,510	407	951	205,387	238	273	123,123
Ulster	1,204	2,412	669,272	902	2,059	532,737	302	353	136,535
Warren	258	475	133,705	163	370	79,888	95	105	53,817
Washington	345	571	165,902	213	419	102,930	132	152	62,972
Wayne	453	803	214,593	273	617	139,091	180	186	75,502
Westchester	9,168	19,680	7,354,795	5,432	13,973	4,574,033	3,736	5,707	2,780,762
Wyoming	191	349	75,715	121	276	49,187	70	73	26,528
Yates	88	137	32,253	46	93	18,345	42	44	13,908

\* Expenditures partially estimated.

Table 9  
 TEMPORARY ASSISTANCE TO NEEDY FAMILIES (TANF) - FP BY PROGRAM  
 Cases, Recipients, Children, Adults and Expenditures by Local District  
 December 2001

(See NOTICE, page 3)

Local District	Family Assistance					Safety Net Assistance - FP				
	Cases	Recipients	Children	Adults	Expenditures	Cases	Recipients	Children	Adults	Expenditures
New York State	177,064	443,664	315,622	128,042	\$89,271,840	1,509	4,065	2,464	1,601	\$879,748
New York City*	121,212	300,214	211,928	88,286	59,355,000	139	318	169	149	35,000
Rest of State	55,852	143,450	103,694	39,756	29,916,840	1,370	3,747	2,295	1,452	844,748
Albany	2,330	6,091	4,239	1,852	1,307,615	22	58	34	24	11,152
Allegany	339	888	608	280	132,867	0	0	0	0	0
Broome	1,252	3,086	2,223	863	581,864	34	80	41	39	14,794
Cattaraugus	428	1,075	766	309	170,343	10	27	15	12	2,901
Cayuga	320	775	559	216	135,728	8	16	8	8	4,142
Chautauqua	1,503	3,829	2,617	1,212	711,675	25	62	39	23	9,197
Chemung	666	1,711	1,225	486	275,726	4	11	6	5	1,661
Chenango	175	409	310	99	68,413	2	7	5	2	747
Clinton	369	827	590	237	155,154	9	17	9	8	5,847
Columbia	244	535	388	147	112,257	0	0	0	0	0
Cortland	293	772	516	256	138,028	8	23	13	10	3,020
Delaware	124	277	213	64	51,685	1	1	0	1	1,014
Dutchess	774	1,740	1,349	391	407,497	26	41	18	23	14,705
Erie	7,827	20,813	15,008	5,805	3,243,389	245	689	414	275	96,603
Essex	123	306	204	102	50,722	3	10	7	3	549
Franklin	198	436	314	122	78,445	2	4	1	3	2,552
Fulton	255	569	394	175	99,500	2	6	4	2	1,069
Genesee	177	484	358	126	80,989	5	13	7	6	4,078
Greene	283	685	458	227	141,827	0	0	0	0	0
Hamilton	8	16	9	7	3,257	0	0	0	0	0
Herkimer	238	555	398	157	102,539	2	6	3	3	635
Jefferson	594	1,515	1,030	485	261,099	15	52	30	22	8,365
Lewis	77	175	124	51	27,513	0	0	0	0	0
Livingston	352	854	530	324	164,466	15	37	21	16	8,305
Madison	123	250	208	42	53,416	0	0	0	0	0
Monroe	7,939	21,620	15,869	5,751	4,016,032	497	1,373	881	492	275,048
Montgomery	203	553	401	152	98,767	0	0	0	0	0
Nassau	2,710	6,317	4,854	1,463	1,751,030	36	90	54	36	28,513
Niagara	1,544	3,837	2,661	1,176	610,208	46	148	93	55	22,691
Oneida	1,518	4,389	3,183	1,206	683,477	28	80	51	29	19,742
Onondaga	4,133	10,913	7,910	3,003	1,899,942	19	51	31	20	10,714
Ontario	358	820	572	248	152,055	6	20	13	7	9,387
Orange	1,784	4,821	3,555	1,266	984,247	25	67	39	28	16,378
Orleans	331	870	584	286	154,979	6	15	8	7	1,813
Oswego	554	1,325	972	353	253,824	7	20	11	9	2,691
Otsego	63	118	102	16	24,396	5	10	5	5	3,621
Putnam	59	115	85	30	33,555	3	6	3	3	4,690
Rensselaer	916	2,392	1,663	729	427,653	6	20	14	6	2,879
Rockland	601	1,906	1,478	428	331,174	15	42	26	16	7,430
St.Lawrence	683	1,576	1,046	530	280,076	3	15	11	4	771
Saratoga	170	306	276	30	70,855	0	0	0	0	0
Schenectady	737	1,716	1,331	385	376,278	12	29	17	12	7,009
Schoharie	63	139	111	28	28,962	0	0	0	0	0
Schuyler	92	232	160	72	39,580	0	0	0	0	0
Seneca	101	243	175	68	43,707	2	5	3	2	1,349
Steuben	504	1,241	866	375	200,297	6	14	7	7	2,769
Suffolk	3,651	9,369	7,110	2,259	3,046,207	68	205	130	75	83,544
Sullivan	412	1,015	759	256	197,510	0	0	0	0	0
Tioga	237	557	386	171	105,575	2	6	3	3	1,215
Tompkins	394	926	630	296	200,026	13	25	12	13	5,361
Ulster	861	1,955	1,439	516	498,835	41	104	60	44	33,902
Warren	161	363	246	117	78,625	2	7	5	2	1,263
Washington	211	415	289	126	102,425	2	4	2	2	505
Wayne	270	609	470	139	137,647	3	8	5	3	1,444
Westchester	5,357	13,760	9,624	4,136	4,467,075	75	213	130	83	106,958
Wyoming	117	266	182	84	47,462	4	10	6	4	1,725
Yates	46	93	67	26	18,345	0	0	0	0	0

\* Expenditures partially estimated.

Table 10  
**SAFETY NET ASSISTANCE - FNP**  
Cases, Recipients, Children, Adults and Expenditures by Local District  
December 2001  
**(See NOTICE, page 3)**

Local District	Safety Net Assistance - FNP				
	Cases	Recipients	Children	Adults	Expenditures
New York State	130,915	207,551	70,431	137,120	\$49,847,491
New York City*	98,860	161,537	56,657	104,880	35,007,000
Rest of State	32,055	46,014	13,774	32,240	14,840,491
Albany	1,132	1,344	205	1,139	606,883
Allegany	140	220	70	150	48,531
Broome	607	840	229	611	262,206
Cattaraugus	199	236	33	203	74,759
Cayuga	87	121	34	87	40,348
Chautauqua	705	928	223	705	231,181
Chemung	220	292	76	216	95,106
Chenango	57	67	10	57	21,558
Clinton	224	263	41	222	96,540
Columbia	112	129	19	110	42,328
Cortland	136	152	20	132	62,297
Delaware	56	63	6	57	29,769
Dutchess	414	517	130	387	313,576
Erie	4,672	7,190	2,435	4,755	1,567,819
Essex	63	73	10	63	18,174
Franklin	98	130	28	102	41,601
Fulton	126	130	1	129	55,599
Genesee	108	116	15	101	42,963
Greene	152	186	36	150	60,473
Hamilton	6	6	0	6	1,835
Herkimer	90	102	20	82	38,178
Jefferson	384	474	84	390	156,402
Lewis	38	49	12	37	12,867
Livingston	216	239	24	215	83,418
Madison	36	37	6	31	13,845
Monroe	5,474	8,713	3,211	5,502	2,296,951
Montgomery	109	114	5	109	66,684
Nassau	1,511	2,093	585	1,508	746,155
Niagara	827	1,301	475	826	341,586
Oneida	687	994	305	689	282,404
Onondaga	2,041	2,520	535	1,985	748,425
Ontario	240	295	54	241	105,154
Orange	780	1,521	697	824	337,676
Orleans	151	209	57	152	73,249
Oswego	191	228	42	186	89,505
Otsego	48	55	5	50	25,094
Putnam	47	50	6	44	24,120
Rensselaer	322	372	41	331	181,003
Rockland	515	1,187	589	598	282,658
St.Lawrence	349	456	112	344	125,821
Saratoga	79	87	16	71	34,505
Schenectady	327	418	108	310	174,856
Schoharie	37	44	6	38	24,601
Schuyler	41	46	2	44	18,093
Seneca	45	56	14	42	22,262
Steuben	306	356	50	306	122,971
Suffolk	2,834	3,832	1,049	2,783	1,331,004
Sullivan	145	169	24	145	60,167
Tioga	76	101	24	77	34,144
Tompkins	238	273	37	236	123,123
Ulster	302	353	66	287	136,535
Warren	95	105	8	97	53,817
Washington	132	152	29	123	62,972
Wayne	180	186	14	172	75,502
Westchester	3,736	5,707	1,832	3,875	2,780,762
Wyoming	70	73	4	69	26,528
Yates	42	44	5	39	13,908

\* Expenditures partially estimated.

Table 11  
**SAFETY NET ASSISTANCE - FNP BY CASE CATEGORY**  
(Maintenance of Effort (MOE) vs. Non-Maintenance of Effort (Non-MOE))  
Cases, Recipients, Children, Adults and Expenditures by Local District  
December 2001

**(See NOTICE, page 3)**

Local District	Maintenance of Effort (MOE)					Non-Maintenance of Effort (Non-MOE)				
	Cases	Recipients	Children	Adults	Expenditures	Cases	Recipients	Children	Adults	Expenditures
New York State	28,004	96,960	65,478	31,482	\$13,320,682	102,911	110,591	4,953	105,638	\$36,526,809
New York City*	24,221	81,511	54,255	27,256	11,637,000	74,639	80,026	2,402	77,624	23,370,000
Rest of State	3,783	15,449	11,223	4,226	1,683,682	28,272	30,565	2,551	28,014	13,156,809
Albany	62	244	181	63	27,275	1,070	1,100	24	1,076	579,608
Allegany	22	84	60	24	5,926	118	136	10	126	42,605
Broome	66	268	191	77	27,956	541	572	38	534	234,250
Cattaraugus	5	19	12	7	1,041	194	217	21	196	73,718
Cayuga	9	41	30	11	4,183	78	80	4	76	36,165
Chautauqua	66	245	179	66	25,560	639	683	44	639	205,621
Chemung	15	72	55	17	6,840	205	220	21	199	88,266
Chenango	2	9	7	2	308	55	58	3	55	21,250
Clinton	8	31	21	10	2,073	216	232	20	212	94,467
Columbia	4	17	13	4	1,260	108	112	6	106	41,068
Cortland	5	19	14	5	1,660	131	133	6	127	60,637
Delaware	1	5	4	1	300	55	58	2	56	29,469
Dutchess	24	100	75	25	16,060	390	417	55	362	297,516
Erie	662	2,645	1,921	724	208,620	4,010	4,545	514	4,031	1,359,199
Essex	2	8	6	2	540	61	65	4	61	17,634
Franklin	15	40	25	15	4,596	83	90	3	87	37,005
Fulton	0	0	0	0	0	126	130	1	129	55,599
Genesee	1	4	3	1	369	107	112	12	100	42,594
Greene	5	22	17	5	1,771	147	164	19	145	58,702
Hamilton	0	0	0	0	0	6	6	0	6	1,835
Herkimer	0	0	0	0	0	90	102	20	82	38,178
Jefferson	27	91	60	31	13,254	357	383	24	359	143,148
Lewis	1	6	4	2	478	37	43	8	35	12,389
Livingston	7	22	14	8	2,228	209	217	10	207	81,190
Madison	1	2	1	1	452	35	35	5	30	13,393
Monroe	1,012	3,928	2,860	1,068	458,661	4,462	4,785	351	4,434	1,838,290
Montgomery	1	6	5	1	95	108	108	0	108	66,589
Nassau	168	614	442	172	89,250	1,343	1,479	143	1,336	656,905
Niagara	138	554	405	149	46,543	689	747	70	677	295,043
Oneida	74	330	248	82	23,949	613	664	57	607	258,455
Onondaga	106	466	355	111	46,581	1,935	2,054	180	1,874	701,844
Ontario	17	65	47	18	5,943	223	230	7	223	99,211
Orange	127	817	632	185	42,870	653	704	65	639	294,806
Orleans	5	21	15	6	2,435	146	188	42	146	70,814
Oswego	9	36	27	9	3,844	182	192	15	177	85,661
Otsego	1	7	5	2	352	47	48	0	48	24,742
Putnam	0	0	0	0	0	47	50	6	44	24,120
Rensselaer	8	26	18	8	5,364	314	346	23	323	175,639
Rockland	100	665	493	172	55,413	415	522	96	426	227,245
St.Lawrence	37	135	96	39	12,754	312	321	16	305	113,067
Saratoga	1	8	7	1	117	78	79	9	70	34,388
Schenectady	16	65	48	17	6,157	311	353	60	293	168,699
Schoharie	0	0	0	0	0	37	44	6	38	24,601
Schuyler	0	0	0	0	0	41	46	2	44	18,093
Seneca	4	15	11	4	1,402	41	41	3	38	20,860
Steuben	5	21	15	6	1,918	301	335	35	300	121,053
Suffolk	290	1,151	836	315	160,994	2,544	2,681	213	2,468	1,170,010
Sullivan	5	24	17	7	1,585	140	145	7	138	58,582
Tioga	6	29	22	7	2,644	70	72	2	70	31,500
Tompkins	10	34	24	10	3,018	228	239	13	226	120,105
Ulster	16	63	47	16	7,699	286	290	19	271	128,836
Warren	0	0	0	0	0	95	105	8	97	53,817
Washington	3	13	10	3	1,038	129	139	19	120	61,934
Wayne	0	0	0	0	0	180	186	14	172	75,502
Westchester	614	2,362	1,645	717	350,306	3,122	3,345	187	3,158	2,430,456
Wyoming	0	0	0	0	0	70	73	4	69	26,528
Yates	0	0	0	0	0	42	44	5	39	13,908

\* Expenditures partially estimated.

Table 12  
**SAFETY NET ASSISTANCE - FNP - CASH TOTAL**  
Cases, Recipients, Children, Adults and Expenditures by Local District  
December 2001  
**(See NOTICE, page 3)**

Local District	Safety Net Assistance - FNP - Cash Total				
	Cases	Recipients	Children	Adults	Expenditures
New York State	See Note	See Note	See Note	See Note	See Note
New York City	See Note	See Note	See Note	See Note	See Note
Rest of State	19,936	22,118	2,291	19,827	\$9,018,210
Albany	985	1,022	32	990	526,741
Allegany	105	123	10	113	38,415
Broome	394	442	53	389	159,075
Cattaraugus	166	182	14	168	65,478
Cayuga	62	69	8	61	20,837
Chautauqua	508	553	44	509	164,883
Chemung	161	170	10	160	66,869
Chenango	46	48	1	47	15,284
Clinton	175	190	16	174	73,837
Columbia	93	96	4	92	30,460
Cortland	100	102	5	97	39,194
Delaware	48	51	2	49	24,243
Dutchess	194	221	41	180	85,167
Erie	2,357	2,608	237	2,371	822,861
Essex	49	53	2	51	14,581
Franklin	69	72	1	71	30,901
Fulton	92	96	1	95	37,265
Genesee	72	75	8	67	25,611
Greene	131	139	7	132	48,608
Hamilton	6	6	0	6	1,835
Herkimer	76	79	11	68	25,099
Jefferson	266	294	25	269	95,126
Lewis	27	30	3	27	6,129
Livingston	157	167	12	155	53,657
Madison	34	35	6	29	11,992
Monroe	2,549	2,964	442	2,522	993,991
Montgomery	95	95	0	95	59,303
Nassau	1,010	1,072	49	1,023	461,312
Niagara	411	445	53	392	165,301
Oneida	484	555	69	486	177,694
Onondaga	1,671	1,844	212	1,632	592,645
Ontario	153	160	7	153	52,559
Orange	415	465	37	428	154,638
Orleans	118	130	10	120	60,668
Oswego	138	150	15	135	61,193
Otsego	35	36	0	36	14,435
Putnam	28	30	2	28	10,943
Rensselaer	251	266	7	259	127,103
Rockland	198	278	77	201	102,835
St.Lawrence	258	264	13	251	82,122
Saratoga	71	79	15	64	26,753
Schenectady	215	241	43	198	104,051
Schoharie	31	38	6	32	19,560
Schuyler	34	39	2	37	9,978
Seneca	24	24	1	23	8,087
Steuben	235	256	21	235	89,565
Suffolk	1,965	2,164	239	1,925	851,717
Sullivan	115	121	9	112	43,225
Tioga	58	59	0	59	20,706
Tompkins	138	155	18	137	63,083
Ulster	192	204	25	179	75,050
Warren	84	91	5	86	46,191
Washington	110	118	14	104	48,113
Wayne	138	144	14	130	51,701
Westchester	2,242	2,606	324	2,282	1,926,063
Wyoming	59	62	4	58	20,245
Yates	38	40	5	35	13,232

Note: A breakout of Safety Net Assistance - FNP - Cash and Safety Net Assistance - FNP - Non-Cash data is not available for New York City.

Table 13  
**SAFETY NET ASSISTANCE - FNP - CASH BY CASE CATEGORY**  
(Maintenance of Effort (MOE) vs. Non-Maintenance of Effort (Non-MOE))  
Cases, Recipients, Children, Adults and Expenditures by Local District  
December 2001

**(See NOTICE, page 3)**

Local District	Maintenance of Effort (MOE)					Non-Maintenance of Effort (Non-MOE)				
	Cases	Recipients	Children	Adults	Expenditures	Cases	Recipients	Children	Adults	Expenditures
New York State	See Note	See Note	See Note	See Note	See Note	See Note	See Note	See Note	See Note	See Note
New York City	See Note	See Note	See Note	See Note	See Note	See Note	See Note	See Note	See Note	See Note
Rest of State	407	1,447	983	464	\$211,623	19,529	20,671	1,308	19,363	\$8,806,587
Albany	10	29	20	9	4,592	975	993	12	981	522,149
Allegany	2	4	2	2	615	103	119	8	111	37,800
Broome	11	31	18	13	5,145	383	411	35	376	153,930
Cattaraugus	0	0	0	0	0	166	182	14	168	65,478
Cayuga	2	9	7	2	992	60	60	1	59	19,845
Chautauqua	5	19	14	5	2,302	503	534	30	504	162,581
Chemung	0	0	0	0	0	161	170	10	160	66,869
Chenango	0	0	0	0	0	46	48	1	47	15,284
Clinton	1	6	4	2	298	174	184	12	172	73,539
Columbia	0	0	0	0	0	93	96	4	92	30,460
Cortland	0	0	0	0	0	100	102	5	97	39,194
Delaware	0	0	0	0	0	48	51	2	49	24,243
Dutchess	6	20	14	6	2,900	188	201	27	174	82,267
Erie	48	160	100	60	19,103	2,309	2,448	137	2,311	803,758
Essex	0	0	0	0	0	49	53	2	51	14,581
Franklin	2	3	1	2	285	67	69	0	69	30,616
Fulton	0	0	0	0	0	92	96	1	95	37,265
Genesee	0	0	0	0	0	72	75	8	67	25,611
Greene	1	1	0	1	262	130	138	7	131	48,346
Hamilton	0	0	0	0	0	6	6	0	6	1,835
Herkimer	0	0	0	0	0	76	79	11	68	25,099
Jefferson	6	19	12	7	3,712	260	275	13	262	91,414
Lewis	0	0	0	0	0	27	30	3	27	6,129
Livingston	1	3	2	1	411	156	164	10	154	53,246
Madison	1	2	1	1	452	33	33	5	28	11,540
Monroe	111	381	257	124	56,923	2,438	2,583	185	2,398	937,068
Montgomery	0	0	0	0	0	95	95	0	95	59,303
Nassau	4	11	7	4	2,229	1,006	1,061	42	1,019	459,083
Niagara	9	22	14	8	2,468	402	423	39	384	162,833
Oneida	10	39	27	12	3,564	474	516	42	474	174,130
Onondaga	26	110	81	29	14,966	1,645	1,734	131	1,603	577,679
Ontario	0	0	0	0	0	153	160	7	153	52,559
Orange	11	41	29	12	4,993	404	424	8	416	149,645
Orleans	2	8	6	2	1,274	116	122	4	118	59,394
Oswego	4	11	7	4	1,373	134	139	8	131	59,820
Otsego	0	0	0	0	0	35	36	0	36	14,435
Putnam	0	0	0	0	0	28	30	2	28	10,943
Rensselaer	0	0	0	0	0	251	266	7	259	127,103
Rockland	16	61	45	16	8,192	182	217	32	185	94,643
St.Lawrence	0	0	0	0	0	258	264	13	251	82,122
Saratoga	1	8	7	1	117	70	71	8	63	26,636
Schenectady	1	1	0	1	60	214	240	43	197	103,991
Schoharie	0	0	0	0	0	31	38	6	32	19,560
Schuyler	0	0	0	0	0	34	39	2	37	9,978
Seneca	0	0	0	0	0	24	24	1	23	8,087
Steuben	3	13	9	4	1,405	232	243	12	231	88,160
Suffolk	30	116	79	37	21,640	1,935	2,048	160	1,888	830,077
Sullivan	1	3	2	1	581	114	118	7	111	42,644
Tioga	0	0	0	0	0	58	59	0	59	20,706
Tompkins	2	9	7	2	1,157	136	146	11	135	61,926
Ulster	1	9	8	1	227	191	195	17	178	74,823
Warren	0	0	0	0	0	84	91	5	86	46,191
Washington	0	0	0	0	0	110	118	14	104	48,113
Wayne	0	0	0	0	0	138	144	14	130	51,701
Westchester	79	298	203	95	49,385	2,163	2,308	121	2,187	1,876,678
Wyoming	0	0	0	0	0	59	62	4	58	20,245
Yates	0	0	0	0	0	38	40	5	35	13,232

Note: Data from New York City does not allow the separation of Safety Net - FNP - Cash and Safety Net - FNP - Non-Cash data.



Table 14  
**SAFETY NET ASSISTANCE - FNP - NON-CASH TOTAL**  
Cases, Recipients, Children, Adults and Expenditures by Local District  
December 2001  
**(See NOTICE, page 3)**

Local District	Safety Net Assistance - FNP - Non-Cash Total				
	Cases	Recipients	Children	Adults	Expenditures
New York State	See Note	See Note	See Note	See Note	See Note
New York City	See Note	See Note	See Note	See Note	See Note
Rest of State	12,119	23,896	11,483	12,413	\$5,822,281
Albany	147	322	173	149	80,142
Allegany	35	97	60	37	10,116
Broome	213	398	176	222	103,131
Cattaraugus	33	54	19	35	9,281
Cayuga	25	52	26	26	19,511
Chautauqua	197	375	179	196	66,298
Chemung	59	122	66	56	28,237
Chenango	11	19	9	10	6,274
Clinton	49	73	25	48	22,703
Columbia	19	33	15	18	11,868
Cortland	36	50	15	35	23,103
Delaware	8	12	4	8	5,526
Dutchess	220	296	89	207	228,409
Erie	2,315	4,582	2,198	2,384	744,958
Essex	14	20	8	12	3,593
Franklin	29	58	27	31	10,700
Fulton	34	34	0	34	18,334
Genesee	36	41	7	34	17,352
Greene	21	47	29	18	11,865
Hamilton	0	0	0	0	0
Herkimer	14	23	9	14	13,079
Jefferson	118	180	59	121	61,276
Lewis	11	19	9	10	6,738
Livingston	59	72	12	60	29,761
Madison	2	2	0	2	1,853
Monroe	2,925	5,749	2,769	2,980	1,302,960
Montgomery	14	19	5	14	7,381
Nassau	501	1,021	536	485	284,843
Niagara	416	856	422	434	176,285
Oneida	203	439	236	203	104,710
Onondaga	370	676	323	353	155,780
Ontario	87	135	47	88	52,595
Orange	365	1,056	660	396	183,038
Orleans	33	79	47	32	12,581
Oswego	53	78	27	51	28,312
Otsego	13	19	5	14	10,659
Putnam	19	20	4	16	13,177
Rensselaer	71	106	34	72	53,900
Rockland	317	909	512	397	179,823
St.Lawrence	91	192	99	93	43,699
Saratoga	8	8	1	7	7,752
Schenectady	112	177	65	112	70,805
Schoharie	6	6	0	6	5,041
Schuyler	7	7	0	7	8,115
Seneca	21	32	13	19	14,175
Steuben	71	100	29	71	33,406
Suffolk	869	1,668	810	858	479,287
Sullivan	30	48	15	33	16,942
Tioga	18	42	24	18	13,438
Tompkins	100	118	19	99	60,040
Ulster	110	149	41	108	61,485
Warren	11	14	3	11	7,626
Washington	22	34	15	19	14,859
Wayne	42	42	0	42	23,801
Westchester	1,494	3,101	1,508	1,593	854,699
Wyoming	11	11	0	11	6,283
Yates	4	4	0	4	676

Note: A breakout of Safety Net Assistance - FNP - Cash and Safety Net Assistance - FNP - Non-Cash data is not available for New York City.

Table 15  
**SAFETY NET ASSISTANCE - FNP - NON-CASH BY CASE CATEGORY**  
(Maintenance of Effort (MOE) vs. Non-Maintenance of Effort (Non-MOE))  
Cases, Recipients, Children, Adults and Expenditures by Local District  
December 2001

**(See NOTICE, page 3)**

Local District	Maintenance of Effort (MOE)					Non-Maintenance of Effort (Non-MOE)				
	Cases	Recipients	Children	Adults	Expenditures	Cases	Recipients	Children	Adults	Expenditures
New York State	See Note	See Note	See Note	See Note	See Note	See Note	See Note	See Note	See Note	See Note
New York City	See Note	See Note	See Note	See Note	See Note	See Note	See Note	See Note	See Note	See Note
Rest of State	3,376	14,002	10,240	3,762	\$1,472,059	8,743	9,894	1,243	8,651	\$4,350,222
Albany	52	215	161	54	22,683	95	107	12	95	57,459
Allegany	20	80	58	22	5,311	15	17	2	15	4,805
Broome	55	237	173	64	22,811	158	161	3	158	80,320
Cattaraugus	5	19	12	7	1,041	28	35	7	28	8,240
Cayuga	7	32	23	9	3,191	18	20	3	17	16,320
Chautauqua	61	226	165	61	23,258	136	149	14	135	43,040
Chemung	15	72	55	17	6,840	44	50	11	39	21,397
Chenango	2	9	7	2	308	9	10	2	8	5,966
Clinton	7	25	17	8	1,775	42	48	8	40	20,928
Columbia	4	17	13	4	1,260	15	16	2	14	10,608
Cortland	5	19	14	5	1,660	31	31	1	30	21,443
Delaware	1	5	4	1	300	7	7	0	7	5,226
Dutchess	18	80	61	19	13,160	202	216	28	188	215,249
Erie	614	2,485	1,821	664	189,517	1,701	2,097	377	1,720	555,441
Essex	2	8	6	2	540	12	12	2	10	3,053
Franklin	13	37	24	13	4,311	16	21	3	18	6,389
Fulton	0	0	0	0	0	34	34	0	34	18,334
Genesee	1	4	3	1	369	35	37	4	33	16,983
Greene	4	21	17	4	1,509	17	26	12	14	10,356
Hamilton	0	0	0	0	0	0	0	0	0	0
Herkimer	0	0	0	0	0	14	23	9	14	13,079
Jefferson	21	72	48	24	9,542	97	108	11	97	51,734
Lewis	1	6	4	2	478	10	13	5	8	6,260
Livingston	6	19	12	7	1,817	53	53	0	53	27,944
Madison	0	0	0	0	0	2	2	0	2	1,853
Monroe	901	3,547	2,603	944	401,738	2,024	2,202	166	2,036	901,222
Montgomery	1	6	5	1	95	13	13	0	13	7,286
Nassau	164	603	435	168	87,021	337	418	101	317	197,822
Niagara	129	532	391	141	44,075	287	324	31	293	132,210
Oneida	64	291	221	70	20,385	139	148	15	133	84,325
Onondaga	80	356	274	82	31,615	290	320	49	271	124,165
Ontario	17	65	47	18	5,943	70	70	0	70	46,652
Orange	116	776	603	173	37,877	249	280	57	223	145,161
Orleans	3	13	9	4	1,161	30	66	38	28	11,420
Oswego	5	25	20	5	2,471	48	53	7	46	25,841
Otsego	1	7	5	2	352	12	12	0	12	10,307
Putnam	0	0	0	0	0	19	20	4	16	13,177
Rensselaer	8	26	18	8	5,364	63	80	16	64	48,536
Rockland	84	604	448	156	47,221	233	305	64	241	132,602
St.Lawrence	37	135	96	39	12,754	54	57	3	54	30,945
Saratoga	0	0	0	0	0	8	8	1	7	7,752
Schenectady	15	64	48	16	6,097	97	113	17	96	64,708
Schoharie	0	0	0	0	0	6	6	0	6	5,041
Schuyler	0	0	0	0	0	7	7	0	7	8,115
Seneca	4	15	11	4	1,402	17	17	2	15	12,773
Steuben	2	8	6	2	513	69	92	23	69	32,893
Suffolk	260	1,035	757	278	139,354	609	633	53	580	339,933
Sullivan	4	21	15	6	1,004	26	27	0	27	15,938
Tioga	6	29	22	7	2,644	12	13	2	11	10,794
Tompkins	8	25	17	8	1,861	92	93	2	91	58,179
Ulster	15	54	39	15	7,472	95	95	2	93	54,013
Warren	0	0	0	0	0	11	14	3	11	7,626
Washington	3	13	10	3	1,038	19	21	5	16	13,821
Wayne	0	0	0	0	0	42	42	0	42	23,801
Westchester	535	2,064	1,442	622	300,921	959	1,037	66	971	553,778
Wyoming	0	0	0	0	0	11	11	0	11	6,283
Yates	0	0	0	0	0	4	4	0	4	676

Note: Data from New York City does not allow the separation of Safety Net - FNP - Cash and Safety Net - FNP - Non-Cash data.

Table 16  
**FOOD STAMPS**  
Households, Persons and Value of Food Stamps Benefits by Local District  
December 2001

Local District	Total			Temporary Assistance			Non-Temporary Assistance		
	Households	Persons	Food Stamps Benefits	Households	Persons	Food Stamps Benefits	Households	Persons	Food Stamps Benefits
New York State	661,598	1,309,928	\$123,809,024	462,618	824,989	\$85,508,232	198,980	484,939	\$38,300,792
New York City	415,995	798,404	82,482,221	339,103	622,359	67,236,269	76,892	176,045	15,245,952
Rest of State	245,603	511,524	41,326,803	123,515	202,630	18,271,963	122,088	308,894	23,054,840
Albany	8,556	17,430	1,442,386	4,931	8,546	804,494	3,625	8,884	637,892
Allegany	1,779	3,725	272,637	843	1,354	109,275	936	2,371	163,362
Broome	5,767	11,455	899,188	2,913	4,552	411,063	2,854	6,903	488,125
Cattaraugus	2,977	6,035	429,602	1,217	1,689	143,524	1,760	4,346	286,078
Cayuga	2,078	4,619	363,511	738	1,057	90,031	1,340	3,562	273,480
Chautauqua	5,389	11,539	941,700	2,821	4,775	458,389	2,568	6,764	483,311
Chemung	2,664	5,781	455,104	1,313	2,114	187,705	1,351	3,667	267,399
Chenango	1,669	3,640	271,778	491	666	60,094	1,178	2,974	211,684
Clinton	2,877	5,419	415,605	1,315	1,636	137,896	1,562	3,783	277,709
Columbia	1,341	2,449	193,306	580	815	73,244	761	1,634	120,062
Cortland	1,525	3,175	252,623	693	1,036	92,709	832	2,139	159,914
Delaware	1,264	2,358	170,811	483	589	47,278	781	1,769	123,533
Dutchess	3,416	6,276	498,659	1,559	2,302	214,437	1,857	3,974	284,222
Erie	35,705	73,221	6,046,260	18,429	30,529	2,877,715	17,276	42,692	3,168,545
Essex	1,125	2,092	147,240	509	674	51,121	616	1,418	96,119
Franklin	1,608	3,302	243,594	644	844	66,780	964	2,458	176,814
Fulton	1,885	4,077	323,773	753	994	89,222	1,132	3,083	234,551
Genesee	1,224	2,485	198,603	505	731	65,617	719	1,754	132,986
Greene	1,317	2,586	209,726	633	976	93,538	684	1,610	116,188
Hamilton	157	232	12,058	28	36	3,087	129	196	8,971
Herkimer	1,907	4,027	311,626	671	921	76,961	1,236	3,106	234,665
Jefferson	3,595	7,928	621,453	1,565	2,377	203,494	2,030	5,551	417,959
Lewis	815	1,764	133,192	279	383	30,633	536	1,381	102,559
Livingston	1,605	3,117	245,369	742	1,180	113,116	863	1,937	132,253
Madison	1,503	3,098	247,459	555	649	51,715	948	2,449	195,744
Monroe	26,614	57,565	4,704,342	15,142	28,238	2,521,961	11,472	29,327	2,182,381
Montgomery	1,873	4,294	343,650	631	852	77,672	1,242	3,442	265,978
Nassau	9,583	16,999	1,436,209	5,852	9,027	816,999	3,731	7,972	619,210
Niagara	6,198	12,719	1,016,002	3,246	5,455	483,157	2,952	7,264	532,845
Oneida	9,227	19,716	1,580,352	3,891	6,034	535,518	5,336	13,682	1,044,834
Onondaga	13,344	30,132	2,483,249	6,786	12,328	1,154,993	6,558	17,804	1,328,256
Ontario	2,248	4,212	320,242	974	1,407	123,385	1,274	2,805	196,857
Orange	7,252	18,385	1,593,936	3,159	6,379	608,086	4,093	12,006	985,850
Orleans	1,286	2,936	234,457	610	1,098	102,714	676	1,838	131,743
Oswego	3,557	8,422	660,206	1,310	1,909	166,960	2,247	6,513	493,246
Otsego	1,227	2,324	176,099	439	499	39,485	788	1,825	136,614
Putnam	479	655	43,215	278	331	22,982	201	324	20,233
Rensselaer	3,940	8,186	701,231	1,858	3,037	296,451	2,082	5,149	404,780
Rockland	4,723	15,094	1,241,972	1,803	3,476	244,804	2,920	11,618	997,168
St. Lawrence	3,462	7,214	547,150	1,629	2,443	212,657	1,833	4,771	334,493
Saratoga	2,701	5,201	397,463	898	1,000	80,682	1,803	4,201	316,781
Schenectady	4,015	8,672	698,235	1,661	2,463	225,275	2,354	6,209	472,960
Schoharie	776	1,563	115,175	260	306	22,084	516	1,257	93,091
Schuyler	449	909	71,510	209	337	30,239	240	572	41,271
Seneca	800	1,524	111,647	294	400	32,199	506	1,124	79,448
Steuben	2,785	5,902	452,496	1,280	1,977	173,408	1,505	3,925	279,088
Suffolk	14,342	25,994	2,134,001	8,872	14,159	1,247,958	5,470	11,835	886,043
Sullivan	2,123	4,258	317,312	984	1,432	122,549	1,139	2,826	194,763
Tioga	1,054	2,337	180,801	458	699	62,199	596	1,638	118,602
Tompkins	1,859	3,572	264,651	944	1,392	115,158	915	2,180	149,493
Ulster	3,498	6,527	489,596	1,859	2,838	240,075	1,639	3,689	249,521
Warren	1,622	3,065	239,599	769	1,077	92,877	853	1,988	146,722
Washington	1,571	3,131	240,054	644	805	67,234	927	2,326	172,820
Wayne	2,261	4,101	324,728	965	1,227	110,763	1,296	2,874	213,965
Westchester	15,448	31,125	2,641,251	10,031	17,851	1,624,950	5,417	13,274	1,016,301
Wyoming	807	1,605	121,005	331	452	39,811	476	1,153	81,194
Yates	731	1,355	97,704	238	277	23,540	493	1,078	74,164

Note: Food Stamps households containing only SSI recipients are counted as TA in accordance with Federal reporting requirements.

Note: Rest of State data does not include the following FAP data: 43 households, 44 persons, and \$4,634 in expenditures.

Table 17  
**SUPPLEMENTAL SECURITY INCOME**  
 Recipients, Total Program Expenditures, Federal and State Shares, by Local District  
 December 2001

Local District	Expenditures			
	Recipients	Total	Federal	State
New York State*	625,239	\$283,969,607	\$236,374,505	\$47,595,102
New York City	397,389	187,171,711	159,381,552	27,790,159
Rest of State	217,760	93,340,634	74,758,960	18,581,674
Albany	6,198	2,643,052	2,092,758	550,294
Allegany	1,453	615,074	493,757	121,317
Broome	5,040	2,162,228	1,768,307	393,921
Cattaraugus	2,343	1,026,343	838,277	188,066
Cayuga	1,746	736,619	576,595	160,024
Chautauqua	3,892	1,724,186	1,400,400	323,786
Chemung	2,766	1,182,427	975,915	206,512
Chenango	1,335	569,228	482,821	86,407
Clinton	2,440	982,304	799,233	183,071
Columbia	1,482	603,692	458,751	144,941
Cortland	1,173	474,124	383,329	90,795
Delaware	1,202	467,833	375,779	92,054
Dutchess	4,318	1,833,303	1,381,511	451,792
Erie	25,013	11,196,332	9,155,849	2,040,483
Essex	947	381,564	276,794	104,770
Franklin	1,576	639,398	504,727	134,671
Fulton	1,640	642,537	506,361	136,176
Genesee	987	381,479	300,439	81,040
Greene	1,062	441,421	355,231	86,190
Hamilton	75	27,208	21,544	5,664
Herkimer	1,524	595,049	472,303	122,746
Jefferson	2,861	1,203,370	979,838	223,532
Lewis	638	262,124	213,935	48,189
Livingston	913	389,590	324,559	65,031
Madison	1,226	477,684	366,871	110,813
Monroe	17,742	8,105,124	6,649,571	1,455,553
Montgomery	1,333	493,933	399,048	94,885
Nassau	16,622	6,934,988	5,382,129	1,552,859
Niagara	4,782	2,072,282	1,663,953	408,329
Oneida	7,086	3,078,655	2,541,076	537,579
Onondaga	11,157	4,827,667	4,029,386	798,281
Ontario	1,532	616,553	493,762	122,791
Orange	5,928	2,580,943	2,109,168	471,775
Orleans	900	346,014	281,138	64,876
Oswego	2,844	1,215,509	1,024,064	191,445
Otsego	1,275	512,194	385,999	126,195
Putnam	734	309,672	226,100	83,572
Rensselaer	3,133	1,358,032	1,081,579	276,453
Rockland	4,377	1,895,930	1,371,918	524,012
St.Lawrence	3,609	1,594,042	1,324,457	269,585
Saratoga	2,457	967,594	760,327	207,267
Schenectady	3,687	1,602,255	1,295,075	307,180
Schoharie	700	271,033	201,046	69,987
Schuyler	477	181,799	138,626	43,173
Seneca	676	269,408	213,154	56,254
Steuben	2,920	1,256,327	1,043,888	212,439
Suffolk	20,682	8,874,007	6,809,457	2,064,550
Sullivan	2,529	1,063,643	781,020	282,623
Tioga	981	398,772	339,724	59,048
Tompkins	1,476	605,499	476,919	128,580
Ulster	3,928	1,667,476	1,330,808	336,668
Warren	1,422	540,691	435,484	105,207
Washington	1,379	563,662	453,058	110,604
Wayne	1,790	705,455	569,959	135,496
Westchester	14,693	6,364,029	5,122,266	1,241,763
Wyoming	616	237,620	188,730	48,890
Yates	443	171,657	130,187	41,470
Mental Hygiene	10,090	3,457,262	2,233,993	1,223,269

\* Only NYS includes Mental Hygiene

Table 18  
**SUPPLEMENTAL SECURITY INCOME**  
 SSI Recipients by Living Arrangement and Location  
 December 2001

Living Arrangement	New York State	New York City	Rest of State	Mental Hygiene
Living Alone	325,933	223,819	102,069	45
Living With Others	211,737	132,976	78,744	17
Living in Household of Another	24,091	15,348	8,740	3
Congregate Care Level I	5,731	606	462	4,663
Congregate Care Level II	36,579	14,140	21,897	542
Congregate Care Level III	165	36	129	0
Title XIX Institution	21,003	10,464	5,719	4,820
Total	625,239	397,389	217,760	10,090

Table 19  
**SUPPLEMENTAL SECURITY INCOME**  
 SSI Recipients by Living Arrangement and Category of Assistance  
 December 2001

Living Arrangement	Total	Category of Assistance		
		Aged	Blind	Disabled
Living Alone	325,933	101,698	1,678	222,557
Living With Others	211,737	17,430	1,106	193,201
Living in Household of Another	24,091	10,098	160	13,833
Congregate Care Level I	5,731	295	26	5,410
Congregate Care Level II	36,579	5,088	188	31,303
Congregate Care Level III	165	1	0	164
Title XIX Institution	21,003	3,825	124	17,054
Total	625,239	138,435	3,282	483,522

Table 20  
CHILD SUPPORT COLLECTIONS (IV-D)  
December 2001

Local District	Total	Current Assistance	Former Assistance	Never Assistance
New York State	\$101,660,594	\$7,917,860	\$38,852,688	\$54,890,046
New York City	37,184,550	4,768,574	15,951,415	16,464,561
Rest of State	64,476,044	3,149,286	22,901,273	38,425,485
Albany	1,854,787	79,936	545,836	1,229,015
Allegany	394,137	26,169	208,748	159,220
Broome	1,159,123	53,154	434,107	671,862
Cattaraugus	708,604	56,784	335,249	316,571
Cayuga	584,403	18,281	201,596	364,526
Chautauqua	1,118,598	74,715	657,168	386,715
Chemung	756,695	35,601	290,200	430,894
Chenango	415,574	14,407	127,560	273,607
Clinton	618,803	22,392	261,615	334,796
Columbia	387,535	11,369	132,944	243,222
Cortland	383,746	11,696	147,741	224,309
Delaware	348,341	10,449	118,674	219,218
Dutchess	1,887,676	72,395	498,627	1,316,654
Erie	4,375,175	275,210	2,283,433	1,816,532
Essex	280,996	12,176	152,103	116,717
Franklin	432,597	12,611	192,705	227,281
Fulton	446,829	17,025	165,133	264,671
Genesee	413,401	13,548	145,211	254,642
Greene	360,085	13,510	139,185	207,390
Hamilton	36,446	625	14,739	21,082
Herkimer	506,560	18,514	230,325	257,721
Jefferson	978,238	49,925	378,827	549,486
Lewis	209,596	6,489	69,379	133,728
Livingston	510,021	25,001	175,582	309,438
Madison	426,147	14,475	154,472	257,200
Monroe	4,445,295	326,289	1,998,244	2,120,762
Montgomery	413,079	17,702	149,437	245,940
Nassau	5,675,845	219,424	1,258,437	4,197,984
Niagara	1,352,501	79,539	706,708	566,254
Oneida	1,158,604	70,973	536,914	550,717
Onondaga	3,078,447	155,744	1,376,741	1,545,962
Ontario	777,536	25,568	252,582	499,386
Orange	2,175,650	112,983	578,673	1,483,994
Orleans	304,834	11,568	133,084	160,182
Oswego	999,067	36,236	504,638	458,193
Otsego	373,335	7,755	101,344	264,236
Putnam	488,138	4,816	77,284	406,038
Rensselaer	1,136,798	50,740	392,962	693,096
Rockland	1,495,397	55,743	386,962	1,052,692
St. Lawrence	828,337	36,027	402,558	389,752
Saratoga	1,280,479	16,069	258,875	1,005,535
Schenectady	1,071,534	45,242	285,914	740,378
Schoharie	237,466	10,242	90,165	137,059
Schuyler	129,030	2,627	43,449	82,954
Seneca	264,748	7,596	77,729	179,423
Steuben	705,590	33,370	323,234	348,986
Suffolk	8,038,920	402,231	2,188,714	5,447,975
Sullivan	433,691	27,977	171,388	234,326
Tioga	371,944	22,756	151,072	198,116
Tompkins	484,006	24,069	195,604	264,333
Ulster	1,046,388	47,034	302,294	697,060
Warren	599,688	18,666	179,021	402,001
Washington	525,338	23,378	165,530	336,430
Wayne	745,916	18,774	207,534	519,608
Westchester	3,782,283	276,748	1,172,350	2,333,185
Wyoming	296,335	11,630	106,298	178,407
Yates	165,712	3,313	64,375	98,024

Note: Effective February 1999, collection amounts include collections made on behalf of other states.

## **2001 Summary**

**Although the caseload numbers for New York City reflect actual case and individual counts for months subsequent to September 11, 2001, these numbers were likely affected by disruptions caused by the World Trade Center attacks, and thus may not be reflective of underlying caseload trends.**

**December 2001 was the first month where TANF (Family Assistance and Safety Net - FP) cases in New York State exhausted their 60-month limit on federally funded cash assistance. As a result, a significant number of cases transferred from federally funded assistance categories to those financed entirely by the State and its localities. While these transfers will not affect the trend in overall Temporary Assistance recipient and case counts, significant shifts from the previous month will occur within the various case types, primarily through a movement of cases from Family Assistance to the Safety Net - FNP categories. Such transfers will continue to occur in subsequent months as more TANF cases reach the 60-month limit. However, based on our observations regarding the number of cases approaching the time limit, the maximum number of these transfers will be substantially smaller in the coming months, and is expected to rapidly diminish to a constant and relatively low level. Interpretation of caseload trends should be made with this information in mind.**

Table A-1

## Comparison of Monthly Average Cases and Recipients, and Annual Expenditures for 2001 and 2000

## 2001 SUMMARY

Program	2001	2000	Actual Change	Percentage Change
<b>New York State</b>				(%)
<b>Temporary Assistance</b>				
Cases	323,600	366,498	(42,898)	(11.70)
Recipients	688,547	794,503	(105,956)	(13.34)
Expenditures	\$ 1,775,301,044	\$ 1,954,774,625	(\$179,473,581)	(9.18)
<b>Food Stamps</b>				
Households	663,939	686,132	(22,193)	(3.23)
Recipients	1,317,463	1,376,034	(58,571)	(4.26)
Expenditures	\$ 1,403,829,557	\$ 1,353,025,694	\$50,803,863	3.75
<b>Supplemental Security Income</b>				
Recipients	614,550	605,328	9,222	1.52
Expenditures	\$ 3,350,791,721	\$ 3,205,307,514	\$145,484,207	4.54
<b>New York City</b>				
<b>Temporary Assistance</b>				
Cases	233,129	266,596	(33,467)	(12.55)
Recipients	492,277	572,580	(80,303)	(14.02)
Expenditures *	\$ 1,198,794,000	\$ 1,345,372,000	(\$146,578,000)	(10.89)
<b>Food Stamps</b>				
Households	426,123	453,770	(27,647)	(6.09)
Recipients	826,190	888,026	(61,836)	(6.96)
Expenditures	\$ 952,290,603	\$ 941,435,794	\$10,854,809	1.15
<b>Supplemental Security Income</b>				
Recipients	396,125	389,664	6,461	1.66
Expenditures	\$ 2,232,990,151	\$ 2,134,702,443	\$98,287,708	4.60
<b>Rest of State</b>				
<b>Temporary Assistance</b>				
Cases	90,471	99,902	(9,431)	(9.44)
Recipients	196,270	221,923	(25,653)	(11.56)
Expenditures	\$ 576,507,044	\$ 609,402,625	(\$32,895,581)	(5.40)
<b>Food Stamps</b>				
Households	237,816	232,362	5,454	2.35
Recipients	491,273	488,008	3,265	0.67
Expenditures	\$ 451,538,954	\$ 411,589,900	\$39,949,054	9.71
<b>Supplemental Security Income</b>				
Recipients	218,425	215,664	2,761	1.28
Expenditures	\$ 1,117,801,570	\$ 1,070,605,071	\$47,196,499	4.41

\* Partially estimated.

Note: SSI data listed here do not include Mental Hygiene data. See Table A-10 for total SSI data.



**Table A-2**  
**TEMPORARY ASSISTANCE**  
**Year to Year Monthly Comparison by Local District**  
**Monthly Average Cases and Recipients, and Annual Expenditures**  
**2001 SUMMARY**

Local District	2001			2000			Percentage Change		
	Cases	Recipients	Expenditures	Cases	Recipients	Expenditures	Cases (%)	Recipients (%)	Expenditures (%)
New York State	323,600	688,547	\$1,775,301,044	366,498	794,503	\$1,954,774,625	(11.70)	(13.34)	(9.18)
New York City*	233,129	492,277	1,198,794,000	266,596	572,580	1,345,372,000	(12.55)	(14.02)	(10.89)
Rest of State	90,471	196,270	576,507,044	99,902	221,923	609,402,625	(9.44)	(11.56)	(5.40)
Albany	3,344	7,435	21,612,029	3,325	7,562	21,034,247	0.57	(1.68)	2.75
Allegany	482	1,093	2,186,791	558	1,282	2,467,697	(13.62)	(14.74)	(11.38)
Broome	1,905	4,110	10,442,843	2,191	4,971	11,525,862	(13.05)	(17.32)	(9.40)
Cattaraugus	623	1,325	3,061,130	666	1,419	3,160,330	(6.46)	(6.62)	(3.14)
Cayuga	411	908	2,135,313	426	948	2,130,407	(3.52)	(4.22)	0.23
Chautauqua	2,054	4,394	10,713,160	2,074	4,508	10,220,036	(0.96)	(2.53)	4.83
Chemung	850	1,906	4,202,999	902	2,082	4,217,195	(5.76)	(8.45)	(0.34)
Chenango	233	504	1,221,882	252	549	1,209,137	(7.54)	(8.20)	1.05
Clinton	585	1,090	3,000,485	572	1,118	2,869,930	2.27	(2.50)	4.55
Columbia	376	707	1,907,161	392	785	1,953,511	(4.08)	(9.94)	(2.37)
Cortland	395	859	2,241,762	412	947	2,359,974	(4.13)	(9.29)	(5.01)
Delaware	183	346	895,784	200	382	1,004,484	(8.50)	(9.42)	(10.82)
Dutchess	1,288	2,476	8,316,111	1,445	2,915	8,448,844	(10.87)	(15.06)	(1.57)
Erie	13,710	30,478	69,683,390	16,456	36,839	79,430,199	(16.69)	(17.27)	(12.27)
Essex	195	396	970,348	229	452	1,062,441	(14.85)	(12.39)	(8.67)
Franklin	286	556	1,336,329	330	649	1,464,626	(13.33)	(14.33)	(8.76)
Fulton	367	678	1,880,421	413	845	2,033,948	(11.14)	(19.76)	(7.55)
Genesee	281	590	1,476,158	282	607	1,482,938	(0.35)	(2.80)	(0.46)
Greene	407	811	2,169,492	409	821	2,123,654	(0.49)	(1.22)	2.16
Hamilton	13	20	59,184	12	19	49,051	8.33	5.26	20.66
Herkimer	307	620	1,558,468	349	752	1,620,194	(12.03)	(17.55)	(3.81)
Jefferson	1,011	2,074	5,363,406	1,157	2,418	5,894,198	(12.62)	(14.23)	(9.01)
Lewis	113	221	510,728	138	277	584,137	(18.12)	(20.22)	(12.57)
Livingston	538	1,038	3,019,599	482	980	2,617,402	11.62	5.92	15.37
Madison	164	296	857,331	178	327	889,854	(7.87)	(9.48)	(3.65)
Monroe	14,170	31,894	90,406,566	16,119	37,313	100,700,894	(12.09)	(14.52)	(10.22)
Montgomery	287	593	1,613,288	295	616	1,581,296	(2.71)	(3.73)	2.02
Nassau	4,358	8,766	30,035,149	4,902	10,026	31,977,833	(11.10)	(12.57)	(6.08)
Niagara	2,452	5,168	12,165,797	2,687	5,579	12,618,761	(8.75)	(7.37)	(3.59)
Oneida	2,277	5,606	12,215,002	2,558	6,430	13,391,846	(10.99)	(12.81)	(8.79)
Onondaga	5,956	13,183	32,029,704	5,876	13,526	30,869,290	1.36	(2.54)	3.76
Ontario	573	1,075	3,122,908	534	1,019	2,803,627	7.30	5.50	11.39
Orange	2,859	7,433	20,567,071	3,046	7,925	21,517,195	(6.14)	(6.21)	(4.42)
Orleans	470	1,054	2,541,121	464	1,069	2,508,149	1.29	(1.40)	1.31
Oswego	766	1,666	4,258,323	832	1,936	4,536,487	(7.93)	(13.95)	(6.13)
Otsego	111	183	656,133	119	200	652,963	(6.72)	(8.50)	0.49
Putnam	113	188	1,011,335	120	201	920,896	(5.83)	(6.47)	9.82
Rensselaer	1,192	2,628	6,824,728	1,197	2,663	6,464,705	(0.42)	(1.31)	5.57
Rockland	1,142	3,297	7,941,254	1,250	3,628	9,036,397	(8.64)	(9.12)	(12.12)
St. Lawrence	1,018	2,050	4,686,212	1,154	2,406	5,093,273	(11.79)	(14.80)	(7.99)
Saratoga	245	381	1,374,293	245	400	1,372,460	0.00	(4.75)	0.13
Schenectady	1,034	2,215	5,989,595	1,040	2,386	5,614,448	(0.58)	(7.17)	6.68
Schoharie	96	163	644,086	94	166	572,908	2.13	(1.81)	12.42
Schuyler	120	245	609,275	115	236	559,650	4.35	3.81	8.87
Seneca	172	331	852,302	185	377	872,004	(7.03)	(12.20)	(2.26)
Steuben	770	1,557	3,773,100	925	1,932	4,365,779	(16.76)	(19.41)	(13.58)
Suffolk	6,882	14,021	58,597,943	7,400	15,630	60,246,205	(7.00)	(10.29)	(2.74)
Sullivan	554	1,131	3,121,791	556	1,169	3,037,465	(0.36)	(3.25)	2.78
Tioga	282	591	1,451,437	318	682	1,533,282	(11.32)	(13.34)	(5.34)
Tompkins	648	1,248	3,855,146	676	1,334	3,963,644	(4.14)	(6.45)	(2.74)
Ulster	1,208	2,423	7,504,983	1,269	2,539	7,461,307	(4.81)	(4.57)	0.59
Warren	257	488	1,433,867	243	470	1,318,692	5.76	3.83	8.73
Washington	318	561	1,867,463	323	626	1,778,981	(1.55)	(10.38)	4.97
Wayne	463	844	2,461,426	522	1,074	2,683,389	(11.30)	(21.42)	(8.27)
Westchester	9,281	19,850	90,782,954	10,713	23,370	96,155,688	(13.37)	(15.06)	(5.59)
Wyoming	193	359	910,233	182	354	879,344	6.04	1.41	3.51
Yates	83	147	380,255	93	187	459,471	(10.75)	(21.39)	(17.24)

\* Expenditures partially estimated.

**Table A-3**  
**FOOD STAMPS**  
**Year to Year Monthly Comparison by Local District**  
**Monthly Average Households and Persons, and Annual Expenditures**  
**2001 SUMMARY**

Local District	2001			2000			Percentage Change		
	Households	Recipients	Expenditures	Households	Recipients	Expenditures	Households (%)	Recipients (%)	Expenditures (%)
New York State	663,939	1,317,463	\$ 1,403,829,557	686,132	1,376,034	\$ 1,353,025,694	(3.23)	(4.26)	3.75
New York City	426,123	826,190	952,290,603	453,770	888,026	941,435,794	(6.09)	(6.96)	1.15
Rest of State	237,816	491,273	451,538,954	232,362	488,008	411,589,900	2.35	0.67	9.71
Albany	8,263	16,847	15,847,245	7,720	16,080	13,868,161	7.03	4.77	14.27
Allegany	1,728	3,542	2,978,791	1,717	3,604	2,787,523	0.64	(1.72)	6.86
Broome	5,429	10,615	9,532,353	5,445	11,017	8,846,259	(0.29)	(3.65)	7.76
Cattaraugus	2,759	5,486	4,497,384	2,655	5,365	4,035,990	3.92	2.26	11.43
Cayuga	1,957	4,217	3,776,463	1,862	3,983	3,227,719	5.10	5.87	17.00
Chautauqua	5,116	10,824	9,964,995	4,885	10,318	8,606,974	4.73	4.90	15.78
Chemung	2,486	5,253	4,572,320	2,369	5,074	3,960,087	4.94	3.53	15.46
Chenango	1,560	3,339	2,832,587	1,499	3,290	2,606,077	4.07	1.49	8.69
Clinton	2,808	5,295	4,641,953	2,738	5,274	4,301,622	2.56	0.40	7.91
Columbia	1,316	2,387	2,163,349	1,254	2,313	1,896,962	4.94	3.20	14.04
Cortland	1,372	2,811	2,549,881	1,269	2,703	2,202,695	8.12	4.00	15.76
Delaware	1,224	2,255	1,840,943	1,142	2,157	1,631,043	7.18	4.54	12.87
Dutchess	3,369	6,084	5,565,319	3,252	6,130	5,298,891	3.60	(0.75)	5.03
Erie	35,558	72,578	68,518,624	36,111	74,436	65,093,405	(1.53)	(2.50)	5.26
Essex	1,094	2,009	1,571,129	1,041	1,990	1,414,564	5.09	0.95	11.07
Franklin	1,531	3,089	2,581,216	1,491	2,987	2,351,870	2.68	3.41	9.75
Fulton	1,752	3,694	3,336,207	1,555	3,277	2,755,888	12.67	12.73	21.06
Genesee	1,137	2,308	1,972,534	1,102	2,256	1,739,292	3.18	2.30	13.41
Greene	1,262	2,477	2,270,890	1,177	2,357	1,952,480	7.22	5.09	16.31
Hamilton	149	216	129,451	136	208	127,750	9.56	3.85	1.33
Herkimer	1,799	3,739	3,241,153	1,686	3,554	2,790,408	6.70	5.21	16.15
Jefferson	3,432	7,537	6,623,380	3,300	7,311	5,945,289	4.00	3.09	11.41
Lewis	784	1,680	1,422,043	734	1,587	1,244,044	6.81	5.86	14.31
Livingston	1,539	2,935	2,640,683	1,421	2,776	2,265,684	8.30	5.73	16.55
Madison	1,402	2,842	2,558,224	1,280	2,556	2,038,630	9.53	11.19	25.49
Monroe	25,713	55,463	51,495,684	25,672	55,975	47,019,731	0.16	(0.91)	9.52
Montgomery	1,784	3,989	3,727,956	1,614	3,585	3,112,588	10.53	11.27	19.77
Nassau	9,560	16,871	16,129,310	9,548	17,526	15,462,795	0.13	(3.74)	4.31
Niagara	5,964	12,021	11,017,303	5,741	11,738	9,792,272	3.88	2.41	12.51
Oneida	8,861	18,819	17,082,642	8,561	18,454	15,573,187	3.50	1.98	9.69
Onondaga	12,682	28,270	26,709,903	11,991	27,188	23,261,333	5.76	3.98	14.83
Ontario	2,088	3,834	3,343,891	1,855	3,452	2,734,136	12.56	11.07	22.30
Orange	7,230	18,434	18,085,700	7,168	18,387	16,520,836	0.86	0.26	9.47
Orleans	1,215	2,706	2,452,125	1,134	2,491	2,012,521	7.14	8.63	21.84
Oswego	3,317	7,828	6,991,100	3,108	7,543	6,212,309	6.72	3.78	12.54
Otsego	1,164	2,135	1,789,776	1,079	1,998	1,530,123	7.88	6.86	16.97
Putnam	466	646	492,609	439	653	466,058	6.15	(1.07)	5.70
Rensselaer	3,718	7,608	7,310,574	3,552	7,405	6,373,851	4.67	2.74	14.70
Rockland	4,657	14,814	13,893,284	4,386	14,122	12,498,510	6.18	4.90	11.16
St. Lawrence	3,356	6,884	5,943,080	3,188	6,583	5,163,611	5.27	4.57	15.10
Saratoga	2,580	4,921	4,301,151	2,403	4,705	3,924,427	7.37	4.59	9.60
Schenectady	3,912	8,416	7,639,966	3,601	7,894	6,466,246	8.64	6.61	18.15
Schoharie	741	1,463	1,203,879	686	1,380	1,072,372	8.02	6.01	12.26
Schuyler	407	813	684,961	387	796	604,976	5.17	2.14	13.22
Seneca	805	1,491	1,231,182	778	1,431	1,045,235	3.47	4.19	17.79
Steuben	2,609	5,517	4,768,536	2,653	5,780	4,593,750	(1.66)	(4.55)	3.80
Suffolk	14,029	25,390	23,551,999	14,194	26,875	23,030,700	(1.16)	(5.53)	2.26
Sullivan	2,005	3,963	3,316,687	1,797	3,644	2,793,700	11.57	8.75	18.72
Tioga	953	2,061	1,784,998	895	1,997	1,547,145	6.48	3.20	15.37
Tompkins	1,805	3,452	2,958,562	1,761	3,461	2,764,149	2.50	(0.26)	7.03
Ulster	3,476	6,323	5,473,147	3,496	6,463	5,262,992	(0.57)	(2.17)	3.99
Warren	1,521	2,854	2,555,168	1,448	2,745	2,227,440	5.04	3.97	14.71
Washington	1,484	2,905	2,488,699	1,379	2,709	2,159,062	7.61	7.24	15.27
Wayne	2,125	3,782	3,255,018	2,015	3,718	2,962,216	5.46	1.72	9.88
Westchester	15,327	30,836	29,927,917	15,612	32,054	28,309,536	(1.83)	(3.80)	5.72
Wyoming	740	1,446	1,253,183	685	1,355	1,107,550	8.03	6.72	13.15
Yates	696	1,259	1,049,847	695	1,298	995,236	0.14	(3.00)	5.49

**Table A-4**  
**SUPPLEMENTAL SECURITY INCOME**  
**Year to Year Monthly Comparison by Local District**  
**Monthly Average Recipients, and Annual Expenditures**  
**2001 SUMMARY**

Local District	2001		2000		Percentage Change	
	Recipients	Expenditures	Recipients	Expenditures	Recipients (%)	Expenditures (%)
New York State	624,971	\$3,393,536,370	616,195	\$3,249,058,523	1.42	4.45
New York City	396,125	2,232,990,151	389,664	2,134,702,443	1.66	4.60
Rest of State	218,425	1,117,801,570	215,664	1,070,605,071	1.28	4.41
Albany	6,308	32,413,102	6,289	31,666,669	0.30	2.36
Allegany	1,467	7,573,845	1,445	7,262,916	1.52	4.28
Broome	5,035	26,140,151	4,916	24,301,749	2.42	7.56
Cattaraugus	2,353	12,100,560	2,345	11,765,536	0.34	2.85
Cayuga	1,736	8,806,657	1,749	8,501,436	(0.74)	3.59
Chautauqua	3,882	19,893,789	3,836	19,108,565	1.20	4.11
Chemung	2,764	13,967,987	2,732	13,356,429	1.17	4.58
Chenango	1,328	6,315,277	1,303	5,972,165	1.92	5.75
Clinton	2,466	12,175,304	2,459	11,763,238	0.28	3.50
Columbia	1,502	7,359,470	1,509	7,194,138	(0.46)	2.30
Cortland	1,201	6,081,881	1,186	5,725,334	1.26	6.23
Delaware	1,184	5,387,325	1,162	5,237,365	1.89	2.86
Dutchess	4,333	21,865,320	4,286	21,110,857	1.10	3.57
Erie	25,119	134,467,642	25,059	130,898,962	0.24	2.73
Essex	948	4,584,568	923	4,271,264	2.71	7.34
Franklin	1,587	7,682,108	1,587	7,491,126	0.00	2.55
Fulton	1,651	7,914,689	1,645	7,418,770	0.36	6.68
Genesee	983	4,543,339	965	4,429,932	1.87	2.56
Greene	1,068	5,044,960	1,033	4,823,779	3.39	4.59
Hamilton	77	327,495	69	309,066	11.59	5.96
Herkimer	1,551	7,238,938	1,570	7,018,730	(1.21)	3.14
Jefferson	2,846	14,482,246	2,763	13,222,975	3.00	9.52
Lewis	641	3,130,714	634	2,945,027	1.10	6.31
Livingston	918	4,631,122	919	4,434,036	(0.11)	4.44
Madison	1,221	5,701,934	1,231	5,526,120	(0.81)	3.18
Monroe	17,524	95,157,778	16,925	89,302,555	3.54	6.56
Montgomery	1,302	6,009,445	1,277	5,620,183	1.96	6.93
Nassau	16,770	84,137,516	16,603	80,337,188	1.01	4.73
Niagara	4,803	24,834,571	4,767	23,941,319	0.76	3.73
Oneida	7,100	36,751,542	6,991	35,265,439	1.56	4.21
Onondaga	11,184	58,930,388	10,996	56,606,606	1.71	4.11
Ontario	1,534	7,699,690	1,489	7,015,863	3.02	9.75
Orange	5,955	30,187,952	5,940	29,148,829	0.25	3.56
Orleans	906	4,306,065	901	4,234,297	0.55	1.69
Oswego	2,869	14,447,469	2,837	13,940,597	1.13	3.64
Otsego	1,298	6,248,419	1,303	6,008,007	(0.38)	4.00
Putnam	742	3,788,791	718	3,666,680	3.34	3.33
Rensselaer	3,120	15,731,328	3,065	14,809,180	1.79	6.23
Rockland	4,401	22,709,780	4,285	21,731,685	2.71	4.50
St.Lawrence	3,609	18,352,626	3,606	17,673,957	0.08	3.84
Saratoga	2,484	11,622,913	2,415	10,805,887	2.86	7.56
Schenectady	3,707	19,096,026	3,572	17,776,228	3.78	7.42
Schoharie	709	3,388,492	704	3,205,859	0.71	5.70
Schuyler	494	2,340,436	508	2,405,498	(2.76)	(2.70)
Seneca	695	3,286,896	705	3,163,480	(1.42)	3.90
Steuben	2,884	14,890,052	2,801	13,858,607	2.96	7.44
Suffolk	20,861	106,634,817	20,760	102,748,387	0.49	3.78
Sullivan	2,521	12,880,455	2,507	12,459,082	0.56	3.38
Tioga	982	4,893,062	970	4,673,703	1.24	4.69
Tompkins	1,483	7,444,147	1,484	7,249,223	(0.07)	2.69
Ulster	3,980	20,225,166	3,965	19,692,930	0.38	2.70
Warren	1,436	6,445,922	1,419	6,383,961	1.20	0.97
Washington	1,414	6,788,183	1,389	6,532,324	1.80	3.92
Wayne	1,786	8,667,168	1,783	8,278,233	0.17	4.70
Westchester	14,626	74,987,374	14,257	71,157,834	2.59	5.38
Wyoming	617	2,949,801	624	2,989,906	(1.12)	(1.34)
Yates	460	2,136,877	483	2,165,360	(4.76)	(1.32)
Mental Hygiene	10,421	42,744,649	10,867	43,751,009	(4.10)	(2.30)

Note: Only New York State includes Mental Hygiene.

**Table A-5**  
**TEMPORARY ASSISTANCE**  
**Monthly Average Cases, Recipients, Children and Adults, and Annual Expenditures**  
**by Local District**  
**2001 SUMMARY**

Local District	Temporary Assistance				Total Expenditures
	Monthly Average				
	Cases	Recipients	Children	Adults	
New York State	323,600	688,547	407,386	281,161	\$ 1,775,301,044
New York City*	233,129	492,277	285,993	206,284	1,198,794,000
Rest of State	90,471	196,270	121,393	74,877	576,507,044
Albany	3,344	7,435	4,529	2,906	21,612,029
Allegany	482	1,093	675	418	2,186,791
Broome	1,905	4,110	2,574	1,536	10,442,843
Cattaraugus	623	1,325	830	495	3,061,130
Cayuga	411	908	598	310	2,135,313
Chautauqua	2,054	4,394	2,647	1,747	10,713,160
Chemung	850	1,906	1,264	642	4,202,999
Chenango	233	504	341	163	1,221,882
Clinton	585	1,090	640	450	3,000,485
Columbia	376	707	429	278	1,907,161
Cortland	395	859	504	355	2,241,762
Delaware	183	346	221	125	895,784
Dutchess	1,288	2,476	1,599	877	8,316,111
Erie	13,710	30,478	18,620	11,858	69,683,390
Essex	195	396	226	170	970,348
Franklin	286	556	341	215	1,336,329
Fulton	367	678	387	291	1,880,421
Genesee	281	590	370	220	1,476,158
Greene	407	811	466	345	2,169,492
Hamilton	13	20	9	11	59,184
Herkimer	307	620	396	224	1,558,468
Jefferson	1,011	2,074	1,160	914	5,363,406
Lewis	113	221	129	92	510,728
Livingston	538	1,038	525	513	3,019,599
Madison	164	296	215	81	857,331
Monroe	14,170	31,894	19,840	12,054	90,406,566
Montgomery	287	593	365	228	1,613,288
Nassau	4,358	8,766	5,689	3,077	30,035,149
Niagara	2,452	5,168	3,148	2,020	12,165,797
Oneida	2,277	5,606	3,629	1,977	12,215,002
Onondaga	5,956	13,183	8,372	4,811	32,029,704
Ontario	573	1,075	599	476	3,122,908
Orange	2,859	7,433	4,967	2,466	20,567,071
Orleans	470	1,054	628	426	2,541,121
Oswego	766	1,666	1,094	572	4,258,323
Otsego	111	183	118	65	656,133
Putnam	113	188	108	80	1,011,335
Rensselaer	1,192	2,628	1,614	1,014	6,824,728
Rockland	1,142	3,297	2,202	1,095	7,941,254
St.Lawrence	1,018	2,050	1,174	876	4,686,212
Saratoga	245	381	288	93	1,374,293
Schenectady	1,034	2,215	1,527	688	5,989,595
Schoharie	96	163	103	60	644,086
Schuyler	120	245	150	95	609,275
Seneca	172	331	201	130	852,302
Steuben	770	1,557	913	644	3,773,100
Suffolk	6,882	14,021	8,594	5,427	58,597,943
Sullivan	554	1,131	741	390	3,121,791
Tioga	282	591	376	215	1,451,437
Tompkins	648	1,248	694	554	3,855,146
Ulster	1,208	2,423	1,581	842	7,504,983
Warren	257	488	271	217	1,433,867
Washington	318	561	329	232	1,867,463
Wayne	463	844	522	322	2,461,426
Westchester	9,281	19,850	11,584	8,266	90,782,954
Wyoming	193	359	197	162	910,233
Yates	83	147	80	67	380,255

\* Expenditures partially estimated.

**Table A-6**  
**FAMILY ASSISTANCE**  
**Monthly Average Cases, Recipients, Children and Adults, and Annual Expenditures**  
**by Local District**  
**2001 SUMMARY**

Local District	Family Assistance				Total Expenditures
	Monthly Average			Adults	
	Cases	Recipients	Children		
New York State	213,900	564,851	396,388	168,463	\$1,320,079,422
New York City*	153,067	402,588	279,450	123,138	911,046,000
Rest of State	60,833	162,263	116,938	45,325	409,033,422
Albany	2,401	6,414	4,452	1,962	15,526,593
Allegany	369	967	664	303	1,759,121
Broome	1,332	3,441	2,478	963	7,300,884
Cattaraugus	449	1,130	813	317	2,235,639
Cayuga	320	802	582	220	1,633,928
Chautauqua	1,445	3,722	2,580	1,142	8,306,988
Chemung	659	1,692	1,233	459	3,220,387
Chenango	180	445	334	111	919,920
Clinton	373	856	618	238	1,891,697
Columbia	262	588	422	166	1,388,241
Cortland	273	722	488	234	1,574,487
Delaware	128	286	218	68	637,341
Dutchess	848	1,971	1,505	466	5,652,135
Erie	9,303	25,593	18,191	7,402	50,118,929
Essex	132	327	221	106	664,292
Franklin	204	469	336	133	948,616
Fulton	242	537	375	162	1,165,282
Genesee	184	485	357	128	981,340
Greene	285	683	458	225	1,592,218
Hamilton	7	14	9	5	33,943
Herkimer	222	530	387	143	1,175,121
Jefferson	649	1,675	1,131	544	3,576,968
Lewis	78	182	123	59	374,915
Livingston	330	800	498	302	1,903,144
Madison	121	250	208	42	627,519
Monroe	9,023	25,357	18,436	6,921	61,566,921
Montgomery	182	485	364	121	942,505
Nassau	2,977	7,195	5,486	1,709	21,644,731
Niagara	1,696	4,276	3,009	1,267	8,489,794
Oneida	1,632	4,846	3,520	1,326	9,009,521
Onondaga	4,133	11,194	8,156	3,038	23,916,293
Ontario	348	828	576	252	1,797,873
Orange	2,097	6,535	4,832	1,703	15,696,270
Orleans	347	919	617	302	1,972,075
Oswego	586	1,466	1,070	396	3,155,890
Otsego	68	135	114	21	342,909
Putnam	60	128	98	30	594,060
Rensselaer	895	2,314	1,602	712	4,958,884
Rockland	725	2,771	2,109	662	5,063,987
St.Lawrence	718	1,727	1,153	574	3,421,178
Saratoga	173	304	278	26	885,825
Schenectady	748	1,884	1,472	412	4,274,364
Schoharie	62	125	100	25	370,158
Schuyler	86	209	149	60	440,665
Seneca	116	267	191	76	579,017
Steuben	510	1,278	894	384	2,516,305
Suffolk	4,108	10,878	8,175	2,703	43,019,617
Sullivan	400	964	726	238	2,310,306
Tioga	226	529	370	159	1,170,025
Tompkins	411	987	667	320	2,426,680
Ulster	872	2,018	1,503	515	5,468,855
Warren	161	387	266	121	911,674
Washington	206	442	316	126	1,182,676
Wayne	284	651	502	149	1,584,639
Westchester	6,019	16,193	11,239	4,954	63,279,346
Wyoming	120	280	190	90	601,685
Yates	48	110	77	33	229,046

\* Expenditures partially estimated.



**Table A-7**  
**SAFETY NET ASSISTANCE**  
**Monthly Average Cases, Recipients, Children and Adults, and Annual Expenditures**  
**by Local District**  
**2001 SUMMARY**

Local District	Safety Net Assistance				
	Monthly Average				Total Expenditures
	Cases	Recipients	Children	Adults	
New York State	109,700	123,696	10,998	112,698	\$455,221,622
New York City*	80,062	89,689	6,543	83,146	287,748,000
Rest of State	29,638	34,007	4,455	29,552	167,473,622
Albany	943	1,021	77	944	6,085,436
Allegany	113	126	11	115	427,670
Broome	573	669	96	573	3,141,959
Cattaraugus	174	195	17	178	825,491
Cayuga	91	106	16	90	501,385
Chautauqua	609	672	67	605	2,406,172
Chemung	191	214	31	183	982,612
Chenango	53	59	7	52	301,962
Clinton	212	234	22	212	1,108,788
Columbia	114	119	7	112	518,920
Cortland	122	137	16	121	667,275
Delaware	55	60	3	57	258,443
Dutchess	440	505	94	411	2,663,976
Erie	4,407	4,885	429	4,456	19,564,461
Essex	63	69	5	64	306,056
Franklin	82	87	5	82	387,713
Fulton	125	141	12	129	715,139
Genesee	97	105	13	92	494,818
Greene	122	128	8	120	577,274
Hamilton	6	6	0	6	25,241
Herkimer	85	90	9	81	383,347
Jefferson	362	399	29	370	1,786,438
Lewis	35	39	6	33	135,813
Livingston	208	238	27	211	1,116,455
Madison	43	46	7	39	229,812
Monroe	5,147	6,537	1,404	5,133	28,839,645
Montgomery	105	108	1	107	670,783
Nassau	1,381	1,571	203	1,368	8,390,418
Niagara	756	892	139	753	3,676,003
Oneida	645	760	109	651	3,205,481
Onondaga	1,823	1,989	216	1,773	8,113,411
Ontario	225	247	23	224	1,325,035
Orange	762	898	135	763	4,870,801
Orleans	123	135	11	124	569,046
Oswego	180	200	24	176	1,102,433
Otsego	43	48	4	44	313,224
Putnam	53	60	10	50	417,275
Rensselaer	297	314	12	302	1,865,844
Rockland	417	526	93	433	2,877,267
St. Lawrence	300	323	21	302	1,265,034
Saratoga	72	77	10	67	488,468
Schenectady	286	331	55	276	1,715,231
Schoharie	34	38	3	35	273,928
Schuyler	34	36	1	35	168,610
Seneca	56	64	10	54	273,285
Steuben	260	279	19	260	1,256,795
Suffolk	2,774	3,143	419	2,724	15,578,326
Sullivan	154	167	15	152	811,485
Tioga	56	62	6	56	281,412
Tompkins	237	261	27	234	1,428,466
Ulster	336	405	78	327	2,036,128
Warren	96	101	5	96	522,193
Washington	112	119	13	106	684,787
Wayne	179	193	20	173	876,787
Westchester	3,262	3,657	345	3,312	27,503,608
Wyoming	73	79	7	72	308,548
Yates	35	37	3	34	151,209

\* Expenditures partially estimated.

**Table A-8**  
**TEMPORARY ASSISTANCE BY FUNDING SOURCE**  
**Monthly Average Cases and Recipients, and Annual Expenditures**  
**2001 SUMMARY**

Local District	Total			Federally Participating - TANF Family Assistance and Safety Net - FP			Federally Non-Participating Safety Net Assistance-FNP		
	Cases	Recipients	Expenditures	Cases	Recipients	Expenditures	Cases	Recipients	Expenditures
New York State	323,600	688,547	\$1,775,301,044	215,321	568,674	\$1,330,588,404	108,279	119,873	\$444,712,640
New York City*	233,129	492,277	1,198,794,000	153,239	403,013	911,611,000	79,890	89,264	287,183,000
Rest of State	90,471	196,270	576,507,044	62,082	165,661	418,977,404	28,389	30,609	157,529,640
Albany	3,344	7,435	21,612,029	2,427	6,482	15,688,821	917	953	5,923,208
Allegany	482	1,093	2,186,791	369	967	1,759,121	113	126	427,670
Broome	1,905	4,110	10,442,843	1,366	3,522	7,502,837	539	588	2,940,006
Cattaraugus	623	1,325	3,061,130	452	1,140	2,248,952	171	185	812,178
Cayuga	411	908	2,135,313	325	818	1,669,451	86	90	465,862
Chautauqua	2,054	4,394	10,713,160	1,469	3,774	8,419,991	585	620	2,293,169
Chemung	850	1,906	4,202,999	664	1,706	3,254,621	186	200	948,378
Chenango	233	504	1,221,882	182	450	926,739	51	54	295,143
Clinton	585	1,090	3,000,485	381	876	1,946,372	204	214	1,054,113
Columbia	376	707	1,907,161	262	588	1,388,241	114	119	518,920
Cortland	395	859	2,241,762	279	737	1,606,466	116	122	635,296
Delaware	183	346	895,784	129	288	642,028	54	58	253,756
Dutchess	1,288	2,476	8,316,111	873	2,029	5,816,191	415	447	2,499,920
Erie	13,710	30,478	69,683,390	9,369	25,779	50,476,306	4,341	4,699	19,207,084
Essex	195	396	970,348	133	331	668,159	62	65	302,189
Franklin	286	556	1,336,329	205	470	952,709	81	86	383,620
Fulton	367	678	1,880,421	247	552	1,201,242	120	126	679,179
Genesee	281	590	1,476,158	186	490	997,429	95	100	478,729
Greene	407	811	2,169,492	286	684	1,599,467	121	127	570,025
Hamilton	13	20	59,184	7	14	33,943	6	6	25,241
Herkimer	307	620	1,558,468	225	536	1,192,237	82	84	366,231
Jefferson	1,011	2,074	5,363,406	665	1,709	3,664,719	346	365	1,698,687
Lewis	113	221	510,728	78	183	375,341	35	38	135,387
Livingston	538	1,038	3,019,599	346	836	2,015,192	192	202	1,004,407
Madison	164	296	857,331	121	251	628,520	43	45	228,811
Monroe	14,170	31,894	90,406,566	9,559	26,858	65,796,959	4,611	5,036	24,609,607
Montgomery	287	593	1,613,288	182	485	942,505	105	108	670,783
Nassau	4,358	8,766	30,035,149	3,034	7,344	22,121,013	1,324	1,422	7,914,136
Niagara	2,452	5,168	12,165,797	1,743	4,406	8,749,403	709	762	3,416,394
Oneida	2,277	5,606	12,215,002	1,659	4,919	9,200,995	618	687	3,014,007
Onondaga	5,956	13,183	32,029,704	4,161	11,269	24,118,446	1,795	1,914	7,911,258
Ontario	573	1,075	3,122,908	354	846	1,836,628	219	229	1,286,280
Orange	2,859	7,433	20,567,071	2,124	6,606	15,920,942	735	827	4,646,129
Orleans	470	1,054	2,541,121	348	922	1,977,488	122	132	563,633
Oswego	766	1,666	4,258,323	592	1,484	3,180,009	174	182	1,078,314
Otsego	111	183	656,133	70	140	362,474	41	43	293,659
Putnam	113	188	1,011,335	62	133	626,106	51	55	385,229
Rensselaer	1,192	2,628	6,824,728	899	2,323	4,980,667	293	305	1,844,061
Rockland	1,142	3,297	7,941,254	744	2,824	5,206,046	398	473	2,735,208
St. Lawrence	1,018	2,050	4,686,212	721	1,738	3,441,205	297	312	1,245,007
Saratoga	245	381	1,374,293	173	306	888,089	72	75	486,204
Schenectady	1,034	2,215	5,989,595	766	1,928	4,370,500	268	287	1,619,095
Schoharie	96	163	644,086	62	126	370,548	34	37	273,538
Schuyler	120	245	609,275	86	209	440,665	34	36	168,610
Seneca	172	331	852,302	121	278	613,161	51	53	239,141
Steuben	770	1,557	3,773,100	515	1,290	2,549,104	255	267	1,223,996
Suffolk	6,882	14,021	58,597,943	4,195	11,138	44,245,746	2,687	2,883	14,352,197
Sullivan	554	1,131	3,121,791	402	971	2,326,573	152	160	795,218
Tioga	282	591	1,451,437	228	533	1,179,357	54	58	272,080
Tompkins	648	1,248	3,855,146	423	1,008	2,498,111	225	240	1,357,035
Ulster	1,208	2,423	7,504,983	908	2,112	5,739,634	300	311	1,765,349
Warren	257	488	1,433,867	162	389	915,023	95	99	518,844
Washington	318	561	1,867,463	208	445	1,193,111	110	116	674,352
Wayne	463	844	2,461,426	288	660	1,613,914	175	184	847,512
Westchester	9,281	19,850	90,782,954	6,077	16,365	64,055,435	3,204	3,485	26,727,519
Wyoming	193	359	910,233	122	284	613,406	71	75	296,827
Yates	83	147	380,255	48	110	229,046	35	37	151,209

\* Expenditures partially estimated.

**Table A-9  
FOOD STAMPS  
Monthly Average Households and Persons, and Annual Expenditures  
2001 SUMMARY**

Local District	Total			Temporary Assistance			Non-Temporary Assistance		
	Households	Persons	Food Stamps Benefits	Households	Persons	Food Stamps Benefits	Households	Persons	Food Stamps Benefits
New York State	663,939	1,317,463	\$1,403,829,557	471,816	851,283	\$989,013,010	192,123	466,180	\$414,816,547
New York City	426,123	826,190	952,290,603	347,342	644,020	776,269,920	78,781	182,170	176,020,683
Rest of State	237,816	491,273	451,538,954	124,474	207,263	212,743,090	113,342	284,010	238,795,864
Albany	8,263	16,847	15,847,245	4,779	8,334	8,794,973	3,484	8,513	7,052,272
Allegany	1,728	3,542	2,978,791	839	1,338	1,259,173	889	2,204	1,719,618
Broome	5,429	10,615	9,532,353	2,881	4,585	4,705,845	2,548	6,030	4,826,508
Cattaraugus	2,759	5,486	4,497,384	1,158	1,645	1,598,070	1,601	3,841	2,899,314
Cayuga	1,957	4,217	3,776,463	736	1,055	1,016,944	1,221	3,162	2,759,519
Chautauqua	5,116	10,824	9,964,995	2,717	4,575	4,970,430	2,399	6,249	4,994,565
Chemung	2,486	5,253	4,572,320	1,258	2,009	1,990,447	1,228	3,244	2,581,873
Chenango	1,560	3,339	2,832,587	484	686	692,875	1,076	2,653	2,139,712
Clinton	2,808	5,295	4,641,953	1,304	1,640	1,569,018	1,504	3,655	3,072,935
Columbia	1,316	2,387	2,163,349	605	854	884,930	711	1,533	1,278,419
Cortland	1,372	2,811	2,549,881	644	987	987,400	728	1,824	1,562,481
Delaware	1,224	2,255	1,840,943	483	597	542,028	741	1,658	1,298,915
Dutchess	3,369	6,084	5,565,319	1,597	2,414	2,553,977	1,772	3,670	3,011,342
Erie	35,558	72,578	68,518,624	19,289	32,799	35,494,852	16,269	39,779	33,023,772
Essex	1,094	2,009	1,571,129	496	648	543,674	598	1,361	1,027,455
Franklin	1,531	3,089	2,581,216	649	840	752,249	882	2,249	1,828,967
Fulton	1,752	3,694	3,336,207	730	964	970,275	1,022	2,730	2,365,932
Genesee	1,137	2,308	1,972,534	486	700	697,030	651	1,608	1,275,504
Greene	1,262	2,477	2,270,890	598	911	984,518	664	1,566	1,286,372
Hamilton	149	216	129,451	27	34	28,044	122	182	101,407
Herkimer	1,799	3,739	3,241,153	649	884	815,838	1,150	2,855	2,425,315
Jefferson	3,432	7,537	6,623,380	1,568	2,411	2,339,699	1,864	5,126	4,283,681
Lewis	784	1,680	1,422,043	271	365	319,755	513	1,315	1,102,288
Livingston	1,539	2,935	2,640,683	710	1,116	1,219,287	829	1,819	1,421,396
Madison	1,402	2,842	2,558,224	536	629	573,551	866	2,213	1,984,673
Monroe	25,713	55,463	51,495,684	15,679	29,637	30,438,636	10,034	25,826	21,057,048
Montgomery	1,784	3,989	3,727,956	613	821	834,483	1,171	3,168	2,893,473
Nassau	9,560	16,871	16,129,310	5,960	9,297	9,616,153	3,600	7,574	6,513,157
Niagara	5,964	12,021	11,017,303	3,294	5,602	5,676,167	2,670	6,419	5,341,136
Oneida	8,861	18,819	17,082,642	3,912	6,264	6,326,121	4,949	12,555	10,756,521
Onondaga	12,682	28,270	26,709,903	6,724	12,428	13,028,400	5,958	15,842	13,681,503
Ontario	2,088	3,834	3,343,891	932	1,325	1,351,320	1,156	2,509	1,992,571
Orange	7,230	18,434	18,085,700	3,239	6,714	7,200,611	3,991	11,720	10,885,089
Orleans	1,215	2,706	2,452,125	583	1,029	1,099,464	632	1,677	1,352,661
Oswego	3,317	7,828	6,991,100	1,291	1,950	1,915,892	2,026	5,878	5,075,208
Otsego	1,164	2,135	1,789,776	426	477	417,258	738	1,658	1,372,518
Putnam	466	646	492,609	265	323	260,553	201	323	232,056
Rensselaer	3,718	7,608	7,310,574	1,776	2,875	3,097,179	1,942	4,733	4,213,395
Rockland	4,657	14,814	13,893,284	1,843	3,575	2,920,266	2,814	11,239	10,973,018
St.Lawrence	3,356	6,884	5,943,080	1,612	2,420	2,380,371	1,744	4,464	3,562,709
Saratoga	2,580	4,921	4,301,151	864	940	847,195	1,716	3,981	3,453,956
Schenectady	3,912	8,416	7,639,966	1,655	2,519	2,522,756	2,257	5,897	5,117,210
Schoharie	741	1,463	1,203,879	266	306	262,412	475	1,157	941,467
Schuyler	407	813	684,961	190	288	284,115	217	525	400,846
Seneca	805	1,491	1,231,182	309	430	399,480	496	1,061	831,702
Steuben	2,609	5,517	4,768,536	1,242	1,914	1,903,143	1,367	3,603	2,865,393
Suffolk	14,029	25,390	23,551,999	8,853	14,138	14,170,201	5,176	11,252	9,381,798
Sullivan	2,005	3,963	3,316,687	949	1,356	1,299,473	1,056	2,607	2,017,214
Tioga	953	2,061	1,784,998	432	647	646,566	521	1,414	1,138,432
Tompkins	1,805	3,452	2,958,562	943	1,436	1,343,355	862	2,016	1,615,207
Ulster	3,476	6,323	5,473,147	1,859	2,813	2,725,006	1,617	3,510	2,748,141
Warren	1,521	2,854	2,555,168	738	1,061	1,034,399	783	1,793	1,520,769
Washington	1,484	2,905	2,488,699	636	827	779,786	848	2,078	1,708,913
Wayne	2,125	3,782	3,255,018	939	1,227	1,224,372	1,186	2,555	2,030,646
Westchester	15,327	30,836	29,927,917	10,393	18,869	19,686,904	4,934	11,967	10,241,013
Wyoming	740	1,446	1,253,183	320	443	454,375	420	1,003	798,808
Yates	696	1,259	1,049,847	243	292	291,796	453	967	758,051

Note : Food Stamps households containing only SSI recipients are counted as "Temporary Assistance" in accordance with Federal reporting requirements.



**Table A-10**  
**SUPPLEMENTAL SECURITY INCOME**  
**Monthly Average Recipients, Total Annual Program Expenditures and Federal and State Shares**  
**by Local District**  
**2001 SUMMARY**

Local District	Expenditures			
	Recipients	Total	Federal	State
New York State	624,971	\$3,393,536,370	\$2,822,469,217	\$571,067,153
New York City	396,125	2,232,990,151	1,900,466,911	332,523,240
Rest of State	218,425	1,117,801,570	894,239,873	223,561,697
Albany	6,308	32,413,102	25,720,386	6,692,716
Allegany	1,467	7,573,845	6,105,128	1,468,717
Broome	5,035	26,140,151	21,490,867	4,649,284
Cattaraugus	2,353	12,100,560	9,863,586	2,236,974
Cayuga	1,736	8,806,657	6,858,751	1,947,906
Chautauqua	3,882	19,893,789	16,159,953	3,733,836
Chemung	2,764	13,967,987	11,523,111	2,444,876
Chenango	1,328	6,315,277	5,305,113	1,010,164
Clinton	2,466	12,175,304	9,921,284	2,254,020
Columbia	1,502	7,359,470	5,583,725	1,775,745
Cortland	1,201	6,081,881	4,915,853	1,166,028
Delaware	1,184	5,387,325	4,289,478	1,097,847
Dutchess	4,333	21,865,320	16,490,896	5,374,424
Erie	25,119	134,467,642	109,857,443	24,610,199
Essex	948	4,584,568	3,361,129	1,223,439
Franklin	1,587	7,682,108	6,086,847	1,595,261
Fulton	1,651	7,914,689	6,249,070	1,665,619
Genesee	983	4,543,339	3,560,083	983,256
Greene	1,068	5,044,960	4,013,414	1,031,546
Hamilton	77	327,495	271,332	56,163
Herkimer	1,551	7,238,938	5,802,994	1,435,944
Jefferson	2,846	14,482,246	11,782,796	2,699,450
Lewis	641	3,130,714	2,555,412	575,302
Livingston	918	4,631,122	3,849,592	781,530
Madison	1,221	5,701,934	4,426,165	1,275,769
Monroe	17,524	95,157,778	77,737,642	17,420,136
Montgomery	1,302	6,009,445	4,833,510	1,175,935
Nassau	16,770	84,137,516	65,272,817	18,864,699
Niagara	4,803	24,834,571	19,901,906	4,932,665
Oneida	7,100	36,751,542	30,221,472	6,530,070
Onondaga	11,184	58,930,388	49,133,000	9,797,388
Ontario	1,534	7,699,690	6,170,989	1,528,701
Orange	5,955	30,187,952	24,541,404	5,646,548
Orleans	906	4,306,065	3,557,647	748,418
Oswego	2,869	14,447,469	12,148,458	2,299,011
Otsego	1,298	6,248,419	4,717,234	1,531,185
Putnam	742	3,788,791	2,750,250	1,038,541
Rensselaer	3,120	15,731,328	12,457,771	3,273,557
Rockland	4,401	22,709,780	16,438,022	6,271,758
St. Lawrence	3,609	18,352,626	15,263,681	3,088,945
Saratoga	2,484	11,622,913	9,189,730	2,433,183
Schenectady	3,707	19,096,026	15,413,977	3,682,049
Schoharie	709	3,388,492	2,474,287	914,205
Schuyler	494	2,340,436	1,826,569	513,867
Seneca	695	3,286,896	2,619,156	667,740
Steuben	2,884	14,890,052	12,347,161	2,542,891
Suffolk	20,861	106,634,817	81,598,758	25,036,059
Sullivan	2,521	12,880,455	9,494,700	3,385,755
Tioga	982	4,893,062	4,164,401	728,661
Tompkins	1,483	7,444,147	5,848,624	1,595,523
Ulster	3,980	20,225,166	16,127,075	4,098,091
Warren	1,436	6,445,922	5,197,341	1,248,581
Washington	1,414	6,788,183	5,472,697	1,315,486
Wayne	1,786	8,667,168	6,995,829	1,671,339
Westchester	14,626	74,987,374	60,267,625	14,719,749
Wyoming	617	2,949,801	2,356,442	593,359
Yates	460	2,136,877	1,655,290	481,587
Mental Hygiene	10,421	42,744,649	27,762,433	14,982,216

Note: Only New York State includes Mental Hygiene.

**Table A-11  
CHILD SUPPORT COLLECTIONS (IV-D)  
2001 SUMMARY**

Local District	Total	Current Assistance	Former Assistance	Never Assistance
New York State	\$1,288,332,080	\$134,191,323	\$493,423,649	\$660,717,108
New York City	477,137,106	83,133,425	194,514,867	199,488,814
Rest of State	811,194,974	51,057,898	298,908,782	461,228,294
Albany	23,303,209	1,216,814	7,273,018	14,813,377
Allegany	5,123,225	457,761	2,834,711	1,830,753
Broome	15,021,191	815,672	6,003,402	8,202,117
Cattaraugus	8,819,359	683,681	4,434,955	3,700,723
Cayuga	7,726,398	258,842	2,831,591	4,635,965
Chautauqua	14,290,859	1,204,984	8,370,852	4,715,023
Chemung	9,876,217	563,552	3,972,779	5,339,886
Chenango	5,265,096	238,655	1,738,226	3,288,215
Clinton	7,608,090	320,818	3,395,809	3,891,463
Columbia	4,848,610	186,749	1,858,519	2,803,342
Cortland	4,805,055	225,042	1,884,565	2,695,448
Delaware	4,395,827	148,082	1,603,194	2,644,551
Dutchess	22,789,009	998,229	6,364,343	15,426,437
Erie	57,275,639	4,979,368	29,822,769	22,473,502
Essex	3,599,520	151,883	2,025,488	1,422,149
Franklin	5,622,457	179,465	2,571,744	2,871,248
Fulton	5,857,907	209,141	2,311,537	3,337,229
Genesee	5,184,705	224,492	1,895,401	3,064,812
Greene	4,496,071	214,328	1,690,445	2,591,298
Hamilton	430,356	5,431	183,018	241,907
Herkimer	6,449,035	258,819	2,922,488	3,267,728
Jefferson	11,520,121	679,447	4,566,997	6,273,677
Lewis	2,620,071	71,914	964,125	1,584,032
Livingston	6,507,460	328,082	2,285,486	3,893,892
Madison	5,394,434	181,914	2,150,040	3,062,480
Monroe	55,454,268	6,232,822	24,281,294	24,940,152
Montgomery	5,004,264	247,142	2,113,824	2,643,298
Nassau	68,880,791	3,166,896	16,223,874	49,490,021
Niagara	17,992,745	1,534,041	9,473,553	6,985,151
Oneida	14,729,465	1,180,664	7,045,270	6,503,531
Onondaga	39,357,403	2,553,910	18,088,551	18,714,942
Ontario	10,056,220	427,496	3,402,269	6,226,455
Orange	27,079,841	1,794,806	7,570,084	17,714,951
Orleans	3,597,477	228,575	1,797,548	1,571,354
Oswego	12,692,309	534,553	6,373,826	5,783,930
Otsego	4,654,210	113,821	1,333,940	3,206,449
Putnam	5,824,907	58,364	1,030,991	4,735,552
Rensselaer	14,392,180	652,245	5,170,032	8,569,903
Rockland	18,414,619	852,273	5,022,501	12,539,845
St.Lawrence	10,091,186	539,370	5,145,392	4,406,424
Saratoga	15,268,370	256,959	3,091,533	11,919,878
Schenectady	13,228,091	613,755	3,882,775	8,731,561
Schoharie	3,146,231	156,119	1,202,703	1,787,409
Schuyler	1,573,739	57,301	524,438	992,000
Seneca	3,527,627	115,912	1,126,772	2,284,943
Steuben	8,836,814	493,437	4,292,677	4,050,700
Suffolk	100,520,289	6,297,693	28,870,363	65,352,233
Sullivan	5,723,359	426,130	2,253,529	3,043,700
Tioga	4,664,134	291,258	2,085,233	2,287,643
Tompkins	6,363,323	312,045	2,733,510	3,317,768
Ulster	13,410,185	668,080	4,122,320	8,619,785
Warren	7,636,334	244,359	2,438,245	4,953,730
Washington	6,604,264	285,598	2,241,537	4,077,129
Wayne	9,143,879	274,759	2,823,975	6,045,145
Westchester	48,571,682	5,412,614	14,831,957	28,327,111
Wyoming	3,750,510	167,286	1,474,216	2,109,008
Yates	2,174,337	64,450	884,548	1,225,339

Note: Effective February 1999, collection amounts include collections made on behalf of other states.