



**Office of Temporary
and Disability Assistance**

Temporary and Disability Assistance Statistics



August 2020





Temporary and Disability Assistance Statistics

August 2020



Temporary Assistance

	This Month	Change From Last Month	Change From Last Year
	507,562	-4,345 (-0.8%)	34,677 (7.3%)
	\$173,711,730	-\$3.7 mil (-2.1%)	\$2.8 mil (1.6%)

Supplemental Nutrition Assistance Program

	This Month	Change From Last Month	Change From Last Year
	2,756,187	5,935 (0.2%)	157,361 (6.1%)
	\$488,159,706	-\$5.5 mil (-1.1%)	\$129.8 mil (36.2%)

Supplemental Security Income

	This Month	Change From Last Month	Change From Last Year
	661,773	-1,435 (-0.2%)	-12,675 (-1.9%)
	\$413,567,620	\$2.2 mil (0.5%)	-\$5.1 mil (-1.2%)

Date Issued: October 30, 2020

Table of Contents

Ten Year Trend Graphs

Temporary Assistance Recipients	5
Supplemental Nutrition Assistance Program Recipients	5
Supplemental Security Income Recipients	5

Temporary Assistance, SSI and SNAP Summary

Table 1:	Temporary Assistance, Family Assistance-FP, Safety Net Assistance, Supplemental Security Income and Supplemental Nutrition Assistance Program Cases by Region	6
Table 2:	Temporary Assistance, Family Assistance-FP, Safety Net Assistance, Supplemental Security Income and Supplemental Nutrition Assistance Program Recipients by Region	6
Table 3:	Temporary Assistance, Family Assistance-FP, Safety Net Assistance, Supplemental Security Income and Supplemental Nutrition Assistance Program Expenditures by Region	6

Temporary Assistance by Program Area

Table 4:	Temporary Assistance Year to Year Monthly Comparison Cases, Recipients and Expenditures	7
Table 5:	Temporary Assistance Cases, Recipients, Children, Adults and Expenditures	8
Table 6:	Family Assistance-FP Cases, Recipients, Children, Adults and Expenditures	9
Table 7:	Safety Net Assistance Cases, Recipients, Children, Adults and Expenditures	10

Temporary Assistance by Funding Source and Program Area

Table 8:	Temporary Assistance by Funding Source (Federally Participating and Federally Non-Participating) Cases, Recipients and Expenditures	11
Table 9:	Temporary Assistance for Needy Families-FP by Program (Family Assistance-FP and Safety Net Assistance-FP) Cases, Recipients, Children, Adults and Expenditures	12
Table 10:	Safety Net Assistance-FNP and Family Assistance-FNP Cases, Recipients, Children, Adults and Expenditures	13
Table 11:	Safety Net Assistance-FNP by Maintenance of Effort Status Cases, Recipients, Children, Adults and Expenditures	14
Table 12:	Safety Net Assistance-FNP-Cash Total Cases, Recipients, Children, Adults and Expenditures	15
Table 13:	Safety Net Assistance-FNP-Cash by Maintenance of Effort Status Cases, Recipients, Children, Adults and Expenditures	16
Table 14:	Safety Net Assistance-FNP-Non-Cash Total Cases, Recipients, Children, Adults and Expenditures	17
Table 15:	Safety Net Assistance-FNP-Non-Cash by Maintenance of Effort Status Cases, Recipients, Children, Adults and Expenditures	18

Supplemental Nutrition Assistance Program

Table 16:	Supplemental Nutrition Assistance Program Households, Persons and Value of Supplemental Nutrition Assistance Program Benefits	19
------------------	---	----

Supplemental Security Income

Table 17:	Supplemental Security Income Recipients, Total Program Expenditures and Federal and State Shares	20
Table 18:	Supplemental Security Income Recipients by Living Arrangement and Location	21
Table 19:	Supplemental Security Income Recipients by Living Arrangement and Category of Assistance	21

Table of Contents

Child Support

Table 20:	Child Support Collections (IV-D)	22
------------------	----------------------------------	----

Aggregate Claims

Table 21:	Aggregate Claims - Total Temporary Assistance	23
Table 22:	Aggregate Claims - Federally Participating - TANF	24
Table 23:	Aggregate Claims - Federally Non-Participating Safety Net Assistance-FNP Maintenance of Effort	25
Table 24:	Aggregate Claims - Federally Non-Participating Safety Net Assistance-FNP and Family Assistance-FNP Non-Maintenance of Effort	26

Home Energy Assistance Program

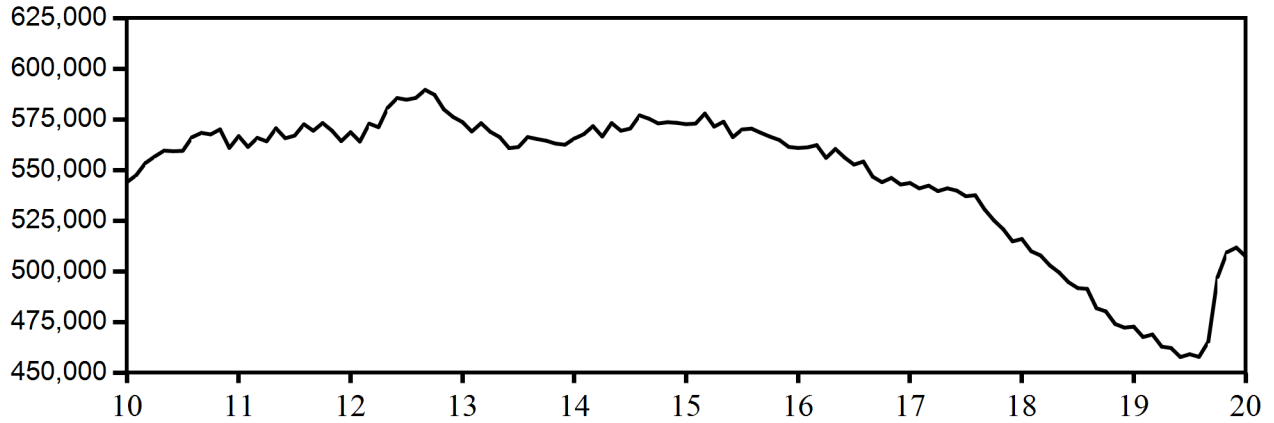
Table 25:	Home Energy Assistance Program Number and Dollar Amount of Benefits Authorized and Administrative Allocations	27
Table 26:	Home Energy Assistance Program - Non-Emergency Number, Total Dollar Amount and Average Dollar Amount of Benefits Authorized	28
Table 27:	Home Energy Assistance Program - Emergency Number, Total Dollar Amount and Average Dollar Amount of Benefits Authorized	29

Welfare to Work Statistical Tables

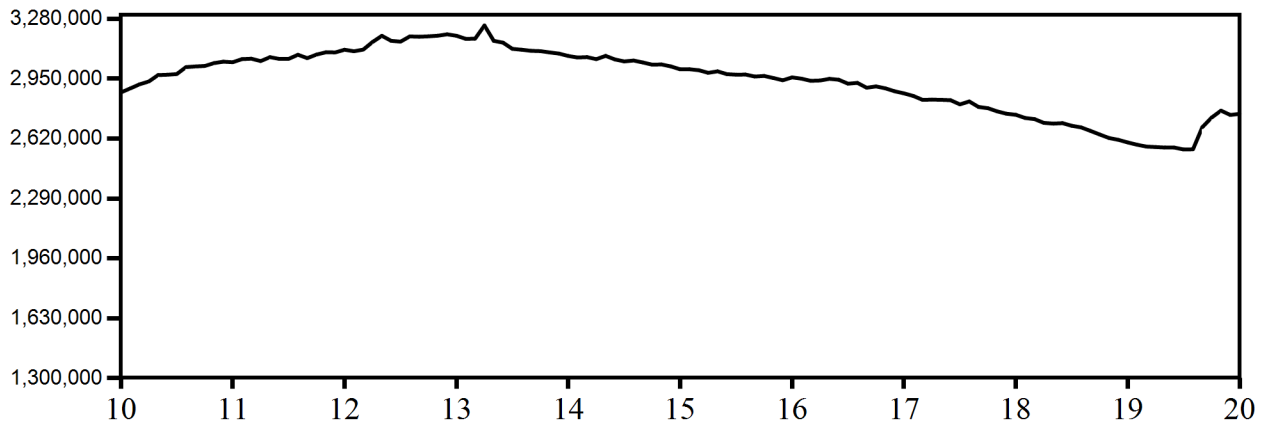
Table 28:	Federal All Families Work Participation Rates TANF, Safety Net Assistance MOE and Combined TANF and Safety Net Assistance MOE	30
Table 29:	Work Sanction Status by Presence in Federal All Families Work Participation Calculation TANF, Safety Net Assistance MOE and Combined TANF and Safety Net Assistance MOE	31
Table 30:	Temporary Assistance Cases with Earned Income Cases, Average Gross Earned Income and Average Net Earned Income after Application of Disregards	32

NEW YORK STATE
September 2010 - August 2020
TEN YEAR TREND

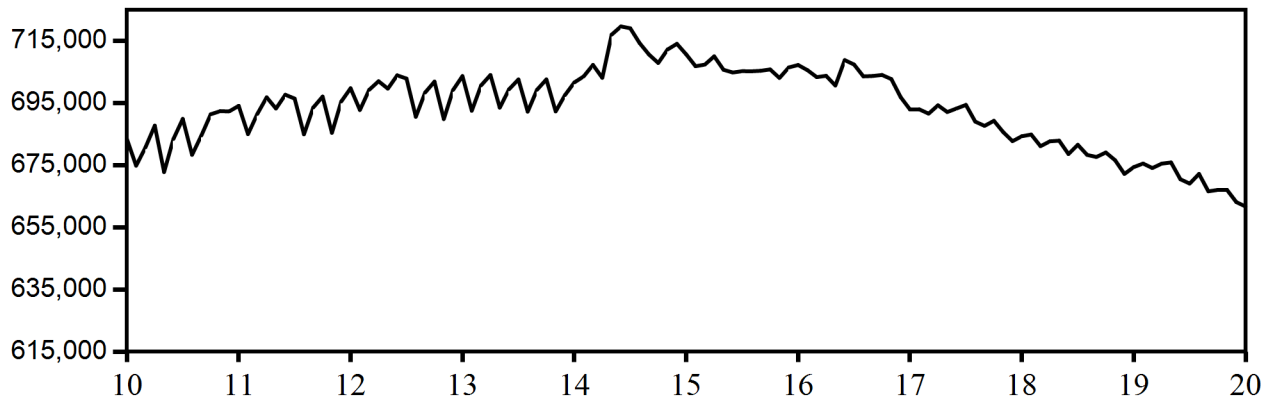
Temporary Assistance Recipients



Supplemental Nutrition Assistance Program Recipients



**Supplemental Security Income Recipients
(Including Mental Hygiene)**



SELECTED SUMMARY PROGRAM DATA
BY REGION

Table 1
TEMPORARY AND DISABILITY ASSISTANCE CASES
August 2020

Region	Cases				
	Temporary Assistance by Program			Supplemental Security Income	Supplemental Nutrition Assistance Program
	Total	Family Assistance-FP	Safety Net Assistance		
New York State	279,085	79,978	199,107	658,800	1,592,924
New York City	207,317	51,193	156,124	389,553	985,088
Rest of State	71,768	28,785	42,983	269,247	607,836

Table 2
TEMPORARY AND DISABILITY ASSISTANCE RECIPIENTS
August 2020

Region	Recipients				
	Temporary Assistance by Program			Supplemental Security Income	Supplemental Nutrition Assistance Program
	Total	Family Assistance-FP	Safety Net Assistance		
New York State	507,562	182,891	324,671	658,800	2,756,187
New York City	379,399	120,685	258,714	389,553	1,683,674
Rest of State	128,163	62,206	65,957	269,247	1,072,513

Table 3
TEMPORARY AND DISABILITY ASSISTANCE EXPENDITURES
August 2020

Region	Expenditures				
	Temporary Assistance by Program			Supplemental Security Income	Supplemental Nutrition Assistance Program
	Total	Family Assistance-FP	Safety Net Assistance		
New York State	\$173,711,730	\$50,035,533	\$123,676,197	\$411,993,878	\$488,159,706
New York City	123,381,644	29,387,861	93,993,783	244,052,781	298,690,166
Rest of State	50,330,086	20,647,672	29,682,414	167,941,097	189,469,540

Note: Supplemental Security Income data listed here do not include Mental Hygiene data. See Tables 17 - 19 for total Supplemental Security Income data.

Table 4
TEMPORARY ASSISTANCE
 Year to Year Monthly Comparison by Local District
 Cases, Recipients and Expenditures
 August 2020

Local District	August 2020			August 2019			August 2018		
	Cases	Recipients	Expenditures	Cases	Recipients	Expenditures	Cases	Recipients	Expenditures
New York State	279,085	507,562	\$173,711,730	256,120	472,885	\$170,939,220	273,744	516,158	\$182,158,676
New York City	207,317	379,399	123,381,644	176,110	322,705	115,318,427	184,932	346,349	121,423,852
Rest of State	71,768	128,163	50,330,086	80,010	150,180	55,620,793	88,812	169,809	60,734,824
Albany	1,873	3,501	1,271,440	2,087	4,105	1,510,408	2,353	4,815	1,592,328
Allegany	306	465	135,870	372	591	177,579	405	680	213,172
Broome	2,724	4,367	1,448,515	3,032	5,254	1,527,356	3,496	6,145	1,869,009
Cattaraugus	811	1,262	407,266	788	1,263	405,678	831	1,310	460,065
Cayuga	678	1,112	447,379	741	1,296	529,522	770	1,314	452,279
Chautauqua	1,845	3,515	988,301	1,914	3,629	1,049,471	2,048	4,009	1,098,460
Chemung	706	1,116	372,181	758	1,183	412,091	684	1,171	380,030
Chenango	277	415	125,940	305	474	140,309	338	565	154,631
Clinton	702	1,023	382,654	742	1,139	430,716	786	1,224	459,828
Columbia	377	602	360,329	426	757	324,173	448	815	333,839
Cortland	412	637	228,603	480	792	280,105	562	897	307,328
Delaware	176	262	95,707	198	278	102,613	194	300	95,106
Dutchess	1,151	1,850	1,175,074	1,213	2,037	1,428,877	1,135	1,870	1,036,137
Erie	9,732	19,247	4,777,489	11,063	23,297	5,640,648	12,816	27,315	6,429,076
Essex	88	123	48,362	124	192	76,751	140	226	87,456
Franklin	429	672	191,106	478	785	226,524	491	813	234,620
Fulton	209	324	115,801	217	318	117,440	235	352	142,479
Genesee	248	388	125,808	307	522	159,984	348	586	193,992
Greene	231	364	142,361	305	475	215,951	325	543	244,170
Hamilton	6	14	2,643	8	13	2,781	16	20	4,523
Herkimer	411	684	219,490	409	719	224,998	445	752	229,970
Jefferson	1,085	1,744	590,897	1,145	1,914	638,174	1,142	1,902	635,329
Lewis	99	146	50,339	98	142	43,654	106	158	50,648
Livingston	449	720	243,697	534	926	304,508	612	1,059	341,990
Madison	295	476	159,895	341	551	196,875	326	550	176,172
Monroe	8,252	15,365	4,640,579	9,284	18,375	5,547,481	10,683	21,368	6,380,069
Montgomery	380	726	239,753	432	885	230,482	490	1,016	285,432
Nassau	3,745	6,261	3,815,455	3,910	6,893	4,163,009	4,508	8,099	4,534,256
Niagara	1,791	2,992	891,518	2,022	3,570	905,514	2,254	4,124	1,078,700
Oneida	2,675	5,365	1,463,086	3,202	6,900	1,829,218	3,708	8,234	2,135,440
Onondaga	5,339	10,560	2,874,064	6,136	12,766	3,275,503	6,544	13,816	3,524,438
Ontario	692	1,001	435,655	774	1,169	459,112	832	1,397	542,935
Orange	1,674	2,967	1,758,778	2,040	3,673	2,283,582	2,207	4,133	1,866,339
Orleans	493	855	255,289	559	985	299,492	573	992	294,232
Oswego	1,265	2,296	632,340	1,440	2,834	816,930	1,575	3,041	898,716
Otsego	229	324	141,880	243	374	257,385	218	323	135,839
Putnam	72	101	47,443	84	115	99,291	77	103	62,339
Rensselaer	882	1,806	574,324	1,204	2,811	826,380	1,390	3,335	900,203
Rockland	814	1,435	565,482	901	1,610	682,356	983	1,760	747,014
St. Lawrence	850	1,439	432,729	955	1,734	461,403	998	1,887	501,395
Saratoga	405	576	250,269	395	564	241,336	397	552	222,004
Schenectady	1,236	2,352	743,464	1,495	3,016	853,764	1,592	3,279	999,799
Schoharie	122	191	93,849	138	227	93,058	137	225	98,788
Schuyler	145	223	129,249	161	273	82,205	156	284	87,557
Seneca	167	259	93,661	233	381	133,398	256	416	154,359
Steuben	847	1,312	455,215	829	1,346	490,090	838	1,404	485,479
Suffolk	6,454	11,219	8,458,595	6,802	11,869	8,197,788	7,690	13,496	9,519,717
Sullivan	587	992	348,206	593	1,024	361,354	683	1,138	407,865
Tioga	307	492	172,142	345	542	211,675	354	559	215,054
Tompkins	717	1,026	517,859	696	1,091	493,233	741	1,162	474,336
Ulster	877	1,466	768,170	981	1,602	967,463	1,195	1,995	1,023,758
Warren	234	327	166,118	302	421	297,170	237	381	174,310
Washington	343	566	238,451	336	572	213,735	325	521	204,791
Wayne	413	667	164,333	522	830	250,064	578	937	305,779
Westchester	4,142	7,548	4,702,787	4,614	8,657	4,259,971	5,226	9,979	5,077,808
Wyoming	150	199	73,272	174	243	101,002	185	275	102,298
Yates	149	226	78,924	123	176	69,163	130	187	71,138

Table 5
TEMPORARY ASSISTANCE
Cases, Recipients, Children, Adults and Expenditures by Local District
August 2020

Local District	Temporary Assistance				
	Cases	Recipients	Children	Adults	Expenditures
New York State	279,085	507,562	234,538	273,024	\$173,711,730
New York City	207,317	379,399	163,365	216,034	123,381,644
Rest of State	71,768	128,163	71,173	56,990	50,330,086
Albany	1,873	3,501	2,072	1,429	1,271,440
Allegany	306	465	236	229	135,870
Broome	2,724	4,367	2,300	2,067	1,448,515
Cattaraugus	811	1,262	620	642	407,266
Cayuga	678	1,112	591	521	447,379
Chautauqua	1,845	3,515	1,999	1,516	988,301
Chemung	706	1,116	757	359	372,181
Chenango	277	415	261	154	125,940
Clinton	702	1,023	568	455	382,654
Columbia	377	602	312	290	360,329
Cortland	412	637	317	320	228,603
Delaware	176	262	158	104	95,707
Dutchess	1,151	1,850	994	856	1,175,074
Erie	9,732	19,247	11,092	8,155	4,777,489
Essex	88	123	81	42	48,362
Franklin	429	672	317	355	191,106
Fulton	209	324	198	126	115,801
Genesee	248	388	201	187	125,808
Greene	231	364	209	155	142,361
Hamilton	6	14	9	5	2,643
Herkimer	411	684	381	303	219,490
Jefferson	1,085	1,744	844	900	590,897
Lewis	99	146	88	58	50,339
Livingston	449	720	360	360	243,697
Madison	295	476	291	185	159,895
Monroe	8,252	15,365	8,918	6,447	4,640,579
Montgomery	380	726	434	292	239,753
Nassau	3,745	6,261	2,981	3,280	3,815,455
Niagara	1,791	2,992	1,692	1,300	891,518
Oneida	2,675	5,365	3,078	2,287	1,463,086
Onondaga	5,339	10,560	6,085	4,475	2,874,064
Ontario	692	1,001	500	501	435,655
Orange	1,674	2,967	1,655	1,312	1,758,778
Orleans	493	855	461	394	255,289
Oswego	1,265	2,296	1,298	998	632,340
Otsego	229	324	166	158	141,880
Putnam	72	101	61	40	47,443
Rensselaer	882	1,806	1,211	595	574,324
Rockland	814	1,435	773	662	565,482
St. Lawrence	850	1,439	757	682	432,729
Saratoga	405	576	326	250	250,269
Schenectady	1,236	2,352	1,494	858	743,464
Schoharie	122	191	118	73	93,849
Schuyler	145	223	115	108	129,249
Seneca	167	259	133	126	93,661
Steuben	847	1,312	641	671	455,215
Suffolk	6,454	11,219	5,591	5,628	8,458,595
Sullivan	587	992	569	423	348,206
Tioga	307	492	347	145	172,142
Tompkins	717	1,026	419	607	517,859
Ulster	877	1,466	806	660	768,170
Warren	234	327	163	164	166,118
Washington	343	566	321	245	238,451
Wayne	413	667	391	276	164,333
Westchester	4,142	7,548	4,190	3,358	4,702,787
Wyoming	150	199	89	110	73,272
Yates	149	226	134	92	78,924

Table 6
FAMILY ASSISTANCE-FP
Cases, Recipients, Children, Adults and Expenditures by Local District
August 2020

Local District	Family Assistance-FP					Expenditures
	Cases	Recipients	Children	Adults		
New York State	79,978	182,891	132,438	50,453		\$50,035,533
New York City	51,193	120,685	83,445	37,240		29,387,861
Rest of State	28,785	62,206	48,993	13,213		20,647,672
Albany	908	1,954	1,531	423		596,228
Allegany	132	252	195	57		64,092
Broome	1,032	2,014	1,610	404		578,045
Cattaraugus	294	607	482	125		152,629
Cayuga	267	581	469	112		157,141
Chautauqua	808	1,870	1,424	446		445,207
Chemung	382	699	621	78		205,787
Chenango	154	270	235	35		74,770
Clinton	314	558	478	80		152,863
Columbia	142	310	250	60		99,166
Cortland	153	316	253	63		82,775
Delaware	96	170	142	28		46,938
Dutchess	474	989	790	199		487,374
Erie	4,029	9,313	7,131	2,182		2,169,560
Essex	50	82	74	8		24,959
Franklin	180	368	263	105		90,740
Fulton	95	182	160	22		46,811
Genesee	95	184	147	37		47,711
Greene	108	204	174	30		56,004
Hamilton	3	11	9	2		2,048
Herkimer	179	373	299	74		96,659
Jefferson	379	810	622	188		206,632
Lewis	47	91	76	15		22,870
Livingston	179	363	279	84		100,341
Madison	134	256	217	39		67,174
Monroe	3,440	7,622	6,012	1,610		2,153,185
Montgomery	171	359	291	68		95,583
Nassau	1,106	2,293	1,821	472		1,144,362
Niagara	752	1,477	1,206	271		396,814
Oneida	1,004	2,400	1,847	553		555,004
Onondaga	2,214	5,290	3,975	1,315		1,293,496
Ontario	270	513	423	90		147,428
Orange	640	1,331	1,061	270		629,543
Orleans	204	443	333	110		112,592
Oswego	576	1,216	947	269		304,792
Otsego	92	169	147	22		49,208
Putnam	34	59	53	6		29,095
Rensselaer	496	1,016	812	204		287,795
Rockland	288	641	522	119		214,030
St. Lawrence	324	662	524	138		160,154
Saratoga	174	314	277	37		89,746
Schenectady	587	1,283	1,068	215		351,575
Schoharie	63	110	97	13		35,375
Schuyler	54	111	97	14		57,270
Seneca	62	110	91	19		30,935
Steuben	314	634	505	129		181,575
Suffolk	2,147	4,818	3,671	1,147		3,162,204
Sullivan	251	507	422	85		135,261
Tioga	171	312	282	30		88,189
Tompkins	199	387	298	89		126,355
Ulster	375	731	584	147		352,255
Warren	100	185	153	32		59,795
Washington	163	356	287	69		101,340
Wayne	200	377	314	63		89,903
Westchester	1,548	3,425	2,750	675		2,070,782
Wyoming	54	88	74	14		26,583
Yates	78	140	118	22		40,924

Table 7
SAFETY NET ASSISTANCE*
Cases, Recipients, Children, Adults and Expenditures by Local District
August 2020

Local District	Safety Net Assistance				
	Cases	Recipients	Children	Adults	Expenditures
New York State	199,107	324,671	102,100	222,571	\$123,676,197
New York City	156,124	258,714	79,920	178,794	93,993,783
Rest of State	42,983	65,957	22,180	43,777	29,682,414
Albany	965	1,547	541	1,006	675,212
Allegany	174	213	41	172	71,778
Broome	1,692	2,353	690	1,663	870,470
Cattaraugus	517	655	138	517	254,637
Cayuga	411	531	122	409	290,238
Chautauqua	1,037	1,645	575	1,070	543,094
Chemung	324	417	136	281	166,394
Chenango	123	145	26	119	51,170
Clinton	388	465	90	375	229,791
Columbia	235	292	62	230	261,163
Cortland	259	321	64	257	145,828
Delaware	80	92	16	76	48,769
Dutchess	677	861	204	657	687,700
Erie	5,703	9,934	3,961	5,973	2,607,929
Essex	38	41	7	34	23,403
Franklin	249	304	54	250	100,366
Fulton	114	142	38	104	68,990
Genesee	153	204	54	150	78,097
Greene	123	160	35	125	86,357
Hamilton	3	3	0	3	595
Herkimer	232	311	82	229	122,831
Jefferson	706	934	222	712	384,265
Lewis	52	55	12	43	27,469
Livingston	270	357	81	276	143,356
Madison	161	220	74	146	92,721
Monroe	4,812	7,743	2,906	4,837	2,487,394
Montgomery	209	367	143	224	144,170
Nassau	2,639	3,968	1,160	2,808	2,671,093
Niagara	1,039	1,515	486	1,029	494,704
Oneida	1,671	2,965	1,231	1,734	908,082
Onondaga	3,125	5,270	2,110	3,160	1,580,568
Ontario	422	488	77	411	288,227
Orange	1,034	1,636	594	1,042	1,129,235
Orleans	289	412	128	284	142,697
Oswego	689	1,080	351	729	327,548
Otsego	137	155	19	136	92,672
Putnam	38	42	8	34	18,348
Rensselaer	386	790	399	391	286,529
Rockland	526	794	251	543	351,452
St. Lawrence	526	777	233	544	272,575
Saratoga	231	262	49	213	160,523
Schenectady	649	1,069	426	643	391,889
Schoharie	59	81	21	60	58,474
Schuyler	91	112	18	94	71,979
Seneca	105	149	42	107	62,726
Steuben	533	678	136	542	273,640
Suffolk	4,307	6,401	1,920	4,481	5,296,391
Sullivan	336	485	147	338	212,945
Tioga	136	180	65	115	83,953
Tompkins	518	639	121	518	391,504
Ulster	502	735	222	513	415,915
Warren	134	142	10	132	106,323
Washington	180	210	34	176	137,111
Wayne	213	290	77	213	74,430
Westchester	2,594	4,123	1,440	2,683	2,632,005
Wyoming	96	111	15	96	46,689
Yates	71	86	16	70	38,000

* Includes Federally Non-Participating Family Assistance cases (non-disabled two-parent Family Assistance cases).

Table 8
TEMPORARY ASSISTANCE BY FUNDING SOURCE
Cases, Recipients, and Expenditures by Local District
August 2020

Local District	Total			Federally Participating-TANF Family Assistance-FP and Safety Net Assistance-FP			Federally Non-Participating Safety Net Assistance-FNP and Family Assistance-FNP		
	Cases	Recipients	Expenditures	Cases	Recipients	Expenditures	Cases	Recipients	Expenditures
New York State	279,085	507,562	\$173,711,730	80,626	184,603	\$50,484,454	198,459	322,959	\$123,227,276
New York City	207,317	379,399	123,381,644	51,241	120,790	29,406,943	156,076	258,609	93,974,701
Rest of State	71,768	128,163	50,330,086	29,385	63,813	21,077,511	42,383	64,350	29,252,575
Albany	1,873	3,501	1,271,440	915	1,976	600,328	958	1,525	671,112
Allegany	306	465	135,870	132	252	64,092	174	213	71,778
Broome	2,724	4,367	1,448,515	1,060	2,086	597,833	1,664	2,281	850,682
Cattaraugus	811	1,262	407,266	327	697	171,244	484	565	236,022
Cayuga	678	1,112	447,379	280	617	170,619	398	495	276,760
Chautauqua	1,845	3,515	988,301	817	1,892	449,879	1,028	1,623	538,422
Chemung	706	1,116	372,181	391	729	211,162	315	387	161,019
Chenango	277	415	125,940	156	276	75,598	121	139	50,342
Clinton	702	1,023	382,654	324	579	157,564	378	444	225,090
Columbia	377	602	360,329	148	324	110,419	229	278	249,910
Cortland	412	637	228,603	158	333	86,041	254	304	142,562
Delaware	176	262	95,707	96	170	46,938	80	92	48,769
Dutchess	1,151	1,850	1,175,074	487	1,018	511,536	664	832	663,538
Erie	9,732	19,247	4,777,489	4,096	9,479	2,204,214	5,636	9,768	2,573,275
Essex	88	123	48,362	50	82	24,959	38	41	23,403
Franklin	429	672	191,106	183	377	91,582	246	295	99,524
Fulton	209	324	115,801	104	204	51,269	105	120	64,532
Genesee	248	388	125,808	102	202	51,653	146	186	74,155
Greene	231	364	142,361	110	208	56,264	121	156	86,097
Hamilton	6	14	2,643	3	11	2,048	3	3	595
Herkimer	411	684	219,490	183	385	99,260	228	299	120,230
Jefferson	1,085	1,744	590,897	392	849	214,144	693	895	376,753
Lewis	99	146	50,339	47	91	22,870	52	55	27,469
Livingston	449	720	243,697	182	372	102,589	267	348	141,108
Madison	295	476	159,895	139	266	69,332	156	210	90,563
Monroe	8,252	15,365	4,640,579	3,600	8,072	2,240,353	4,652	7,293	2,400,226
Montgomery	380	726	239,753	175	369	97,828	205	357	141,925
Nassau	3,745	6,261	3,815,455	1,107	2,297	1,145,114	2,638	3,964	2,670,341
Niagara	1,791	2,992	891,518	783	1,559	412,627	1,008	1,433	478,891
Oneida	2,675	5,365	1,463,086	1,012	2,423	559,125	1,663	2,942	903,961
Onondaga	5,339	10,560	2,874,064	2,225	5,321	1,303,077	3,114	5,239	1,570,987
Ontario	692	1,001	435,655	275	525	151,342	417	476	284,313
Orange	1,674	2,967	1,758,778	650	1,357	641,809	1,024	1,610	1,116,969
Orleans	493	855	255,289	206	447	113,599	287	408	141,690
Oswego	1,265	2,296	632,340	591	1,254	311,496	674	1,042	320,844
Otsego	229	324	141,880	93	172	49,828	136	152	92,052
Putnam	72	101	47,443	36	63	29,856	36	38	17,587
Rensselaer	882	1,806	574,324	500	1,025	290,248	382	781	284,076
Rockland	814	1,435	565,482	289	645	214,481	525	790	351,001
St. Lawrence	850	1,439	432,729	330	678	164,101	520	761	268,628
Saratoga	405	576	250,269	178	322	93,225	227	254	157,044
Schenectady	1,236	2,352	743,464	589	1,288	353,275	647	1,064	390,189
Schoharie	122	191	93,849	63	110	35,375	59	81	58,474
Schuyler	145	223	129,249	54	111	57,270	91	112	71,979
Seneca	167	259	93,661	64	113	31,900	103	146	61,761
Steuben	847	1,312	455,215	315	637	181,939	532	675	273,276
Suffolk	6,454	11,219	8,458,595	2,186	4,923	3,224,449	4,268	6,296	5,234,146
Sullivan	587	992	348,206	252	511	135,549	335	481	212,657
Tioga	307	492	172,142	177	324	97,426	130	168	74,716
Tompkins	717	1,026	517,859	205	403	129,237	512	623	388,622
Ulster	877	1,466	768,170	376	733	352,737	501	733	415,433
Warren	234	327	166,118	100	185	59,795	134	142	106,323
Washington	343	566	238,451	166	360	102,291	177	206	136,160
Wayne	413	667	164,333	212	414	93,954	201	253	70,379
Westchester	4,142	7,548	4,702,787	1,556	3,455	2,090,185	2,586	4,093	2,612,602
Wyoming	150	199	73,272	59	100	29,087	91	99	44,185
Yates	149	226	78,924	79	142	41,496	70	84	37,428

Table 9
 TEMPORARY ASSISTANCE FOR NEEDY FAMILIES-FP BY PROGRAM
 Cases, Recipients, Children, Adults and Expenditures by Local District
 August 2020

Local District	Family Assistance-FP					Safety Net Assistance-FP				
	Cases	Recipients	Children	Adults	Expenditures	Cases	Recipients	Children	Adults	Expenditures
New York State	79,978	182,891	132,438	50,453	\$50,035,533	648	1,712	1,003	709	\$448,921
New York City	51,193	120,685	83,445	37,240	29,387,861	48	105	68	37	19,082
Rest of State	28,785	62,206	48,993	13,213	20,647,672	600	1,607	935	672	429,839
Albany	908	1,954	1,531	423	596,228	7	22	15	7	4,100
Allegany	132	252	195	57	64,092	0	0	0	0	0
Broome	1,032	2,014	1,610	404	578,045	28	72	38	34	19,788
Cattaraugus	294	607	482	125	152,629	33	90	53	37	18,615
Cayuga	267	581	469	112	157,141	13	36	21	15	13,478
Chautauqua	808	1,870	1,424	446	445,207	9	22	12	10	4,672
Chemung	382	699	621	78	205,787	9	30	20	10	5,375
Chenango	154	270	235	35	74,770	2	6	4	2	828
Clinton	314	558	478	80	152,863	10	21	10	11	4,701
Columbia	142	310	250	60	99,166	6	14	7	7	11,253
Cortland	153	316	253	63	82,775	5	17	12	5	3,266
Delaware	96	170	142	28	46,938	0	0	0	0	0
Dutchess	474	989	790	199	487,374	13	29	16	13	24,162
Erie	4,029	9,313	7,131	2,182	2,169,560	67	166	93	73	34,654
Essex	50	82	74	8	24,959	0	0	0	0	0
Franklin	180	368	263	105	90,740	3	9	6	3	842
Fulton	95	182	160	22	46,811	9	22	11	11	4,458
Genesee	95	184	147	37	47,711	7	18	11	7	3,942
Greene	108	204	174	30	56,004	2	4	2	2	260
Hamilton	3	11	9	2	2,048	0	0	0	0	0
Herkimer	179	373	299	74	96,659	4	12	6	6	2,601
Jefferson	379	810	622	188	206,632	13	39	26	13	7,512
Lewis	47	91	76	15	22,870	0	0	0	0	0
Livingston	179	363	279	84	100,341	3	9	6	3	2,248
Madison	134	256	217	39	67,174	5	10	7	3	2,158
Monroe	3,440	7,622	6,012	1,610	2,153,185	160	450	272	178	87,168
Montgomery	171	359	291	68	95,583	4	10	5	5	2,245
Nassau	1,106	2,293	1,821	472	1,144,362	1	4	3	1	752
Niagara	752	1,477	1,206	271	396,814	31	82	48	34	15,813
Oneida	1,004	2,400	1,847	553	555,004	8	23	14	9	4,121
Onondaga	2,214	5,290	3,975	1,315	1,293,496	11	31	17	14	9,581
Ontario	270	513	423	90	147,428	5	12	5	7	3,914
Orange	640	1,331	1,061	270	629,543	10	26	13	13	12,266
Orleans	204	443	333	110	112,592	2	4	2	2	1,007
Oswego	576	1,216	947	269	304,792	15	38	21	17	6,704
Otsego	92	169	147	22	49,208	1	3	1	2	620
Putnam	34	59	53	6	29,095	2	4	2	2	761
Rensselaer	496	1,016	812	204	287,795	4	9	4	5	2,453
Rockland	288	641	522	119	214,030	1	4	3	1	451
St. Lawrence	324	662	524	138	160,154	6	16	8	8	3,947
Saratoga	174	314	277	37	89,746	4	8	4	4	3,479
Schenectady	587	1,283	1,068	215	351,575	2	5	3	2	1,700
Schoharie	63	110	97	13	35,375	0	0	0	0	0
Schuyler	54	111	97	14	57,270	0	0	0	0	0
Seneca	62	110	91	19	30,935	2	3	1	2	965
Steuben	314	634	505	129	181,575	1	3	2	1	364
Suffolk	2,147	4,818	3,671	1,147	3,162,204	39	105	61	44	62,245
Sullivan	251	507	422	85	135,261	1	4	3	1	288
Tioga	171	312	282	30	88,189	6	12	5	7	9,237
Tompkins	199	387	298	89	126,355	6	16	10	6	2,882
Ulster	375	731	584	147	352,255	1	2	1	1	482
Warren	100	185	153	32	59,795	0	0	0	0	0
Washington	163	356	287	69	101,340	3	4	2	2	951
Wayne	200	377	314	63	89,903	12	37	22	15	4,051
Westchester	1,548	3,425	2,750	675	2,070,782	8	30	19	11	19,403
Wyoming	54	88	74	14	26,583	5	12	7	5	2,504
Yates	78	140	118	22	40,924	1	2	1	1	572

Table 10
 SAFETY NET ASSISTANCE-FNP AND FAMILY ASSISTANCE-FNP
 Cases, Recipients, Children, Adults and Expenditures by Local District
 August 2020

Local District	Safety Net Assistance-FNP and Family Assistance-FNP				
	Cases	Recipients	Children	Adults	Expenditures
New York State	198,459	322,959	101,097	221,862	\$123,227,276
New York City	156,076	258,609	79,852	178,757	93,974,701
Rest of State	42,383	64,350	21,245	43,105	29,252,575
Albany	958	1,525	526	999	671,112
Allegany	174	213	41	172	71,778
Broome	1,664	2,281	652	1,629	850,682
Cattaraugus	484	565	85	480	236,022
Cayuga	398	495	101	394	276,760
Chautauqua	1,028	1,623	563	1,060	538,422
Chemung	315	387	116	271	161,019
Chenango	121	139	22	117	50,342
Clinton	378	444	80	364	225,090
Columbia	229	278	55	223	249,910
Cortland	254	304	52	252	142,562
Delaware	80	92	16	76	48,769
Dutchess	664	832	188	644	663,538
Erie	5,636	9,768	3,868	5,900	2,573,275
Essex	38	41	7	34	23,403
Franklin	246	295	48	247	99,524
Fulton	105	120	27	93	64,532
Genesee	146	186	43	143	74,155
Greene	121	156	33	123	86,097
Hamilton	3	3	0	3	595
Herkimer	228	299	76	223	120,230
Jefferson	693	895	196	699	376,753
Lewis	52	55	12	43	27,469
Livingston	267	348	75	273	141,108
Madison	156	210	67	143	90,563
Monroe	4,652	7,293	2,634	4,659	2,400,226
Montgomery	205	357	138	219	141,925
Nassau	2,638	3,964	1,157	2,807	2,670,341
Niagara	1,008	1,433	438	995	478,891
Oneida	1,663	2,942	1,217	1,725	903,961
Onondaga	3,114	5,239	2,093	3,146	1,570,987
Ontario	417	476	72	404	284,313
Orange	1,024	1,610	581	1,029	1,116,969
Orleans	287	408	126	282	141,690
Oswego	674	1,042	330	712	320,844
Otsego	136	152	18	134	92,052
Putnam	36	38	6	32	17,587
Rensselaer	382	781	395	386	284,076
Rockland	525	790	248	542	351,001
St. Lawrence	520	761	225	536	268,628
Saratoga	227	254	45	209	157,044
Schenectady	647	1,064	423	641	390,189
Schoharie	59	81	21	60	58,474
Schuyler	91	112	18	94	71,979
Seneca	103	146	41	105	61,761
Steuben	532	675	134	541	273,276
Suffolk	4,268	6,296	1,859	4,437	5,234,146
Sullivan	335	481	144	337	212,657
Tioga	130	168	60	108	74,716
Tompkins	512	623	111	512	388,622
Ulster	501	733	221	512	415,433
Warren	134	142	10	132	106,323
Washington	177	206	32	174	136,160
Wayne	201	253	55	198	70,379
Westchester	2,586	4,093	1,421	2,672	2,612,602
Wyoming	91	99	8	91	44,185
Yates	70	84	15	69	37,428

Table 11
SAFETY NET ASSISTANCE-FNP BY MAINTENANCE OF EFFORT STATUS
Maintenance of Effort (MOE) vs. Non-Maintenance of Effort (Non-MOE)
Cases, Recipients, Children, Adults and Expenditures by Local District
August 2020

Local District	Maintenance of Effort (MOE)					Non-Maintenance of Effort (Non-MOE)*				
	Cases	Recipients	Children	Adults	Expenditures	Cases	Recipients	Children	Adults	Expenditures
New York State	34,955	115,226	73,766	41,460	\$26,289,669	163,504	207,733	27,331	180,402	\$96,937,607
New York City	28,637	92,929	58,112	34,817	20,092,865	127,439	165,680	21,740	143,940	73,881,836
Rest of State	6,318	22,297	15,654	6,643	6,196,804	36,065	42,053	5,591	36,462	23,055,771
Albany	141	497	351	146	115,234	817	1,028	175	853	555,878
Allegany	15	44	29	15	9,725	159	169	12	157	62,053
Broome	195	661	448	213	108,314	1,469	1,620	204	1,416	742,368
Cattaraugus	23	72	46	26	14,281	461	493	39	454	221,741
Cayuga	31	108	71	37	19,286	367	387	30	357	257,474
Chautauqua	174	600	411	189	106,569	854	1,023	152	871	431,853
Chemung	15	59	42	17	11,488	300	328	74	254	149,531
Chenango	3	10	7	3	1,620	118	129	15	114	48,722
Clinton	27	81	53	28	16,681	351	363	27	336	208,409
Columbia	17	53	36	17	16,571	212	225	19	206	233,339
Cortland	16	50	33	17	11,042	238	254	19	235	131,520
Delaware	2	10	8	2	1,810	78	82	8	74	46,959
Dutchess	50	172	121	51	58,706	614	660	67	593	604,832
Erie	1,042	3,825	2,749	1,076	641,124	4,594	5,943	1,119	4,824	1,932,151
Essex	1	2	1	1	442	37	39	6	33	22,961
Franklin	15	47	33	14	8,006	231	248	15	233	91,518
Fulton	5	18	13	5	2,362	100	102	14	88	62,170
Genesee	13	51	39	12	7,383	133	135	4	131	66,772
Greene	14	43	28	15	10,623	107	113	5	108	75,474
Hamilton	0	0	0	0	0	3	3	0	3	595
Herkimer	17	67	48	19	17,709	211	232	28	204	102,521
Jefferson	55	182	122	60	36,595	638	713	74	639	340,158
Lewis	0	0	0	0	0	52	55	12	43	27,469
Livingston	23	68	43	25	19,545	244	280	32	248	121,563
Madison	18	62	44	18	11,627	138	148	23	125	78,936
Monroe	884	3,150	2,230	920	610,427	3,768	4,143	404	3,739	1,789,799
Montgomery	43	147	103	44	23,535	162	210	35	175	118,390
Nassau	369	1,242	861	381	642,478	2,269	2,722	296	2,426	2,027,863
Niagara	133	474	331	143	81,310	875	959	107	852	397,581
Oneida	316	1,252	913	339	191,306	1,347	1,690	304	1,386	712,655
Onondaga	565	2,144	1,550	594	394,322	2,549	3,095	543	2,552	1,176,665
Ontario	19	59	40	19	14,587	398	417	32	385	269,726
Orange	203	680	478	202	262,571	821	930	103	827	854,398
Orleans	31	109	72	37	19,761	256	299	54	245	121,929
Oswego	83	285	193	92	50,870	591	757	137	620	269,974
Otsego	2	8	6	2	1,786	134	144	12	132	90,266
Putnam	0	0	0	0	0	36	38	6	32	17,587
Rensselaer	129	446	315	131	83,246	253	335	80	255	200,830
Rockland	61	190	128	62	47,453	464	600	120	480	303,548
St. Lawrence	65	222	151	71	36,420	455	539	74	465	232,208
Saratoga	5	23	17	6	1,531	222	231	28	203	155,513
Schenectady	122	441	315	126	89,230	525	623	108	515	300,959
Schoharie	5	21	16	5	3,252	54	60	5	55	55,222
Schuyler	3	15	11	4	2,796	88	97	7	90	69,183
Seneca	12	40	27	13	9,015	91	106	14	92	52,746
Steuben	41	123	78	45	22,163	491	552	56	496	251,113
Suffolk	538	1,953	1,355	598	1,238,131	3,730	4,343	504	3,839	3,996,015
Sullivan	42	133	90	43	31,851	293	348	54	294	180,806
Tioga	8	41	32	9	6,960	122	127	28	99	67,756
Tompkins	33	105	69	36	23,280	479	518	42	476	365,342
Ulster	78	247	162	85	82,756	423	486	59	427	332,677
Warren	2	8	6	2	454	132	134	4	130	105,869
Washington	6	18	13	5	4,278	171	188	19	169	131,882
Wayne	14	43	29	14	4,491	187	210	26	184	65,888
Westchester	589	1,878	1,273	605	966,206	1,997	2,215	148	2,067	1,646,396
Wyoming	3	11	8	3	2,266	88	88	0	88	41,919
Yates	2	7	6	1	1,329	68	77	9	68	36,099

* The Non-MOE category includes otherwise Temporary Assistance for Needy Families eligible or otherwise Safety Net Assistance MOE eligible non-disabled two-parent cases.

Table 12
SAFETY NET ASSISTANCE-FNP-CASH TOTAL*
Cases, Recipients, Children, Adults and Expenditures by Local District
August 2020

Local District	Safety Net Assistance-FNP Cash Total				
	Cases	Recipients	Children	Adults	Expenditures
New York State	See Note	See Note	See Note	See Note	See Note
New York City	See Note	See Note	See Note	See Note	See Note
Rest of State	25,595	32,301	6,369	25,932	\$16,114,503
Albany	556	761	183	578	379,016
Allegany	118	124	6	118	42,546
Broome	939	1,114	188	926	448,575
Cattaraugus	294	348	58	290	141,611
Cayuga	258	284	35	249	155,441
Chautauqua	676	920	229	691	339,132
Chemung	248	282	68	214	116,971
Chenango	94	104	15	89	36,735
Clinton	231	252	25	227	136,980
Columbia	137	151	19	132	120,231
Cortland	161	179	24	155	83,143
Delaware	69	73	7	66	43,282
Dutchess	424	521	98	423	413,226
Erie	3,336	4,772	1,254	3,518	1,412,746
Essex	31	32	4	28	21,109
Franklin	179	188	6	182	68,887
Fulton	61	63	14	49	30,377
Genesee	99	108	12	96	38,316
Greene	73	78	4	74	48,135
Hamilton	2	2	0	2	506
Herkimer	141	162	23	139	67,774
Jefferson	404	497	85	412	197,914
Lewis	34	36	4	32	19,754
Livingston	186	233	42	191	95,621
Madison	105	136	37	99	57,333
Monroe	2,526	3,179	687	2,492	1,189,918
Montgomery	103	133	23	110	80,327
Nassau	1,629	1,910	177	1,733	1,419,420
Niagara	597	717	141	576	263,624
Oneida	1,125	1,563	400	1,163	592,638
Onondaga	2,301	3,329	1,010	2,319	1,078,363
Ontario	264	284	30	254	164,496
Orange	550	659	113	546	554,522
Orleans	219	259	51	208	105,411
Oswego	440	610	139	471	196,269
Otsego	105	115	9	106	73,948
Putnam	20	22	5	17	8,884
Rensselaer	189	242	54	188	142,923
Rockland	227	243	15	228	143,055
St. Lawrence	284	339	49	290	153,841
Saratoga	184	201	36	165	115,019
Schenectady	326	408	103	305	183,680
Schoharie	39	45	5	40	40,420
Schuyler	71	83	11	72	61,225
Seneca	48	62	11	51	29,697
Steuben	406	473	58	415	198,558
Suffolk	2,907	3,569	560	3,009	3,139,412
Sullivan	211	260	48	212	123,826
Tioga	101	108	30	78	46,866
Tompkins	307	342	29	313	248,515
Ulster	266	293	30	263	213,089
Warren	104	105	4	101	88,539
Washington	136	149	10	139	110,133
Wayne	122	140	17	123	34,541
Westchester	815	913	65	848	739,394
Wyoming	65	65	0	65	30,800
Yates	52	61	9	52	27,789

Note: A breakout of Safety Net Assistance-FNP-Cash and Safety Net Assistance-FNP-Non-Cash data is not available for New York City.

* May include otherwise Temporary Assistance for Needy Families eligible or otherwise Safety Net Assistance MOE eligible non-disabled two-parent cases.

Table 13
SAFETY NET ASSISTANCE-FNP-CASH BY MAINTENANCE OF EFFORT STATUS
Maintenance of Effort (MOE) vs. Non-Maintenance of Effort (Non-MOE)
Cases, Recipients, Children, Adults and Expenditures by Local District
August 2020

Local District	Maintenance of Effort (MOE)					Non-Maintenance of Effort (Non-MOE)*				
	Cases	Recipients	Children	Adults	Expenditures	Cases	Recipients	Children	Adults	Expenditures
New York State	See Note	See Note	See Note	See Note	See Note	See Note	See Note	See Note	See Note	See Note
New York City	See Note	See Note	See Note	See Note	See Note	See Note	See Note	See Note	See Note	See Note
Rest of State	1,214	4,058	2,698	1,360	\$997,748	24,381	28,243	3,671	24,572	\$15,116,755
Albany	24	85	56	29	19,463	532	676	127	549	359,553
Allegany	1	1	0	1	649	117	123	6	117	41,897
Broome	47	141	85	56	24,677	892	973	103	870	423,898
Cattaraugus	12	39	25	14	8,212	282	309	33	276	133,399
Cayuga	3	10	5	5	1,325	255	274	30	244	154,116
Chautauqua	48	170	110	60	29,761	628	750	119	631	309,371
Chemung	7	24	16	8	4,801	241	258	52	206	112,170
Chenango	0	0	0	0	0	94	104	15	89	36,735
Clinton	9	22	13	9	4,483	222	230	12	218	132,497
Columbia	1	2	1	1	512	136	149	18	131	119,719
Cortland	4	11	7	4	2,602	157	168	17	151	80,541
Delaware	0	0	0	0	0	69	73	7	66	43,282
Dutchess	25	88	63	25	34,591	399	433	35	398	378,635
Erie	221	718	483	235	141,213	3,115	4,054	771	3,283	1,271,533
Essex	0	0	0	0	0	31	32	4	28	21,109
Franklin	0	0	0	0	0	179	188	6	182	68,887
Fulton	0	0	0	0	0	61	63	14	49	30,377
Genesee	3	10	8	2	1,934	96	98	4	94	36,382
Greene	0	0	0	0	0	73	78	4	74	48,135
Hamilton	0	0	0	0	0	2	2	0	2	506
Herkimer	0	0	0	0	0	141	162	23	139	67,774
Jefferson	17	64	43	21	12,668	387	433	42	391	185,246
Lewis	0	0	0	0	0	34	36	4	32	19,754
Livingston	6	18	10	8	3,700	180	215	32	183	91,921
Madison	10	33	22	11	5,911	95	103	15	88	51,422
Monroe	162	547	376	171	109,803	2,364	2,632	311	2,321	1,080,115
Montgomery	2	10	8	2	1,536	101	123	15	108	78,791
Nassau	28	78	48	30	39,924	1,601	1,832	129	1,703	1,379,496
Niagara	23	77	51	26	14,578	574	640	90	550	249,046
Oneida	79	284	187	97	47,927	1,046	1,279	213	1,066	544,711
Onondaga	224	825	578	247	170,967	2,077	2,504	432	2,072	907,396
Ontario	4	11	7	4	1,964	260	273	23	250	162,532
Orange	28	81	53	28	19,973	522	578	60	518	534,549
Orleans	3	12	8	4	2,635	216	247	43	204	102,776
Oswego	17	54	33	21	10,137	423	556	106	450	186,132
Otsego	0	0	0	0	0	105	115	9	106	73,948
Putnam	0	0	0	0	0	20	22	5	17	8,884
Rensselaer	2	6	3	3	1,164	187	236	51	185	141,759
Rockland	5	6	1	5	1,645	222	237	14	223	141,410
St. Lawrence	9	26	17	9	6,336	275	313	32	281	147,505
Saratoga	2	11	8	3	401	182	190	28	162	114,618
Schenectady	10	29	18	11	5,877	316	379	85	294	177,803
Schoharie	0	0	0	0	0	39	45	5	40	40,420
Schuyler	1	5	4	1	1,028	70	78	7	71	60,197
Seneca	0	0	0	0	0	48	62	11	51	29,697
Steuben	13	37	22	15	7,542	393	436	36	400	191,016
Suffolk	123	432	280	152	228,354	2,784	3,137	280	2,857	2,911,058
Sullivan	6	14	7	7	4,066	205	246	41	205	119,760
Tioga	1	3	2	1	674	100	105	28	77	46,192
Tompkins	5	10	5	5	2,623	302	332	24	308	245,892
Ulster	6	14	8	6	2,559	260	279	22	257	210,530
Warren	0	0	0	0	0	104	105	4	101	88,539
Washington	2	5	3	2	1,414	134	144	7	137	108,719
Wayne	5	17	12	5	1,950	117	123	5	118	32,591
Westchester	16	28	12	16	16,169	799	885	53	832	723,225
Wyoming	0	0	0	0	0	65	65	0	65	30,800
Yates	0	0	0	0	0	52	61	9	52	27,789

Note: A breakout of Safety Net Assistance-FNP-Cash and Safety Net Assistance-FNP-Non-Cash data is not available for New York City.

* The Non-MOE category includes otherwise Temporary Assistance for Needy Families eligible or otherwise Safety Net Assistance MOE eligible non-disabled two-parent cases.

Table 14
SAFETY NET ASSISTANCE-FNP-NON-CASH TOTAL*
Cases, Recipients, Children, Adults and Expenditures by Local District
August 2020

Local District	Safety Net Assistance-FNP-Non-Cash Total				
	Cases	Recipients	Children	Adults	Expenditures
New York State	See Note	See Note	See Note	See Note	See Note
New York City	See Note	See Note	See Note	See Note	See Note
Rest of State	16,788	32,049	14,876	17,173	\$13,138,072
Albany	402	764	343	421	292,096
Allegany	56	89	35	54	29,232
Broome	725	1,167	464	703	402,107
Cattaraugus	190	217	27	190	94,411
Cayuga	140	211	66	145	121,319
Chautauqua	352	703	334	369	199,290
Chemung	67	105	48	57	44,048
Chenango	27	35	7	28	13,607
Clinton	147	192	55	137	88,110
Columbia	92	127	36	91	129,679
Cortland	93	125	28	97	59,419
Delaware	11	19	9	10	5,487
Dutchess	240	311	90	221	250,312
Erie	2,300	4,996	2,614	2,382	1,160,529
Essex	7	9	3	6	2,294
Franklin	67	107	42	65	30,637
Fulton	44	57	13	44	34,155
Genesee	47	78	31	47	35,839
Greene	48	78	29	49	37,962
Hamilton	1	1	0	1	89
Herkimer	87	137	53	84	52,456
Jefferson	289	398	111	287	178,839
Lewis	18	19	8	11	7,715
Livingston	81	115	33	82	45,487
Madison	51	74	30	44	33,230
Monroe	2,126	4,114	1,947	2,167	1,210,308
Montgomery	102	224	115	109	61,598
Nassau	1,009	2,054	980	1,074	1,250,921
Niagara	411	716	297	419	215,267
Oneida	538	1,379	817	562	311,323
Onondaga	813	1,910	1,083	827	492,624
Ontario	153	192	42	150	119,817
Orange	474	951	468	483	562,447
Orleans	68	149	75	74	36,279
Oswego	234	432	191	241	124,575
Otsego	31	37	9	28	18,104
Putnam	16	16	1	15	8,703
Rensselaer	193	539	341	198	141,153
Rockland	298	547	233	314	207,946
St. Lawrence	236	422	176	246	114,787
Saratoga	43	53	9	44	42,025
Schenectady	321	656	320	336	206,509
Schoharie	20	36	16	20	18,054
Schuyler	20	29	7	22	10,754
Seneca	55	84	30	54	32,064
Steuben	126	202	76	126	74,718
Suffolk	1,361	2,727	1,299	1,428	2,094,734
Sullivan	124	221	96	125	88,831
Tioga	29	60	30	30	27,850
Tompkins	205	281	82	199	140,107
Ulster	235	440	191	249	202,344
Warren	30	37	6	31	17,784
Washington	41	57	22	35	26,027
Wayne	79	113	38	75	35,838
Westchester	1,771	3,180	1,356	1,824	1,873,208
Wyoming	26	34	8	26	13,385
Yates	18	23	6	17	9,639

Note: A breakout of Safety Net Assistance-FNP-Cash and Safety Net Assistance-FNP-Non-Cash data is not available for New York City.

* May include otherwise Temporary Assistance for Needy Families eligible or otherwise Safety Net Assistance MOE eligible non-disabled two-parent cases.

Table 15
SAFETY NET ASSISTANCE-FNP-NON-CASH BY MAINTENANCE OF EFFORT STATUS
Maintenance of Effort (MOE) vs. Non-Maintenance of Effort (Non-MOE)
Cases, Recipients, Children, Adults and Expenditures by Local District
August 2020

Local District	Maintenance of Effort (MOE)					Non-Maintenance of Effort (Non-MOE)*				
	Cases	Recipients	Children	Adults	Expenditures	Cases	Recipients	Children	Adults	Expenditures
New York State	See Note	See Note	See Note	See Note	See Note	See Note	See Note	See Note	See Note	See Note
New York City	See Note	See Note	See Note	See Note	See Note	See Note	See Note	See Note	See Note	See Note
Rest of State	5,104	18,239	12,956	5,283	\$5,199,056	11,684	13,810	1,920	11,890	\$7,939,016
Albany	117	412	295	117	95,771	285	352	48	304	196,325
Allegany	14	43	29	14	9,076	42	46	6	40	20,156
Broome	148	520	363	157	83,637	577	647	101	546	318,470
Cattaraugus	11	33	21	12	6,069	179	184	6	178	88,342
Cayuga	28	98	66	32	17,961	112	113	0	113	103,358
Chautauqua	126	430	301	129	76,808	226	273	33	240	122,482
Chemung	8	35	26	9	6,687	59	70	22	48	37,361
Chenango	3	10	7	3	1,620	24	25	0	25	11,987
Clinton	18	59	40	19	12,198	129	133	15	118	75,912
Columbia	16	51	35	16	16,059	76	76	1	75	113,620
Cortland	12	39	26	13	8,440	81	86	2	84	50,979
Delaware	2	10	8	2	1,810	9	9	1	8	3,677
Dutchess	25	84	58	26	24,115	215	227	32	195	226,197
Erie	821	3,107	2,266	841	499,911	1,479	1,889	348	1,541	660,618
Essex	1	2	1	1	442	6	7	2	5	1,852
Franklin	15	47	33	14	8,006	52	60	9	51	22,631
Fulton	5	18	13	5	2,362	39	39	0	39	31,793
Genesee	10	41	31	10	5,449	37	37	0	37	30,390
Greene	14	43	28	15	10,623	34	35	1	34	27,339
Hamilton	0	0	0	0	0	1	1	0	1	89
Herkimer	17	67	48	19	17,709	70	70	5	65	34,747
Jefferson	38	118	79	39	23,927	251	280	32	248	154,912
Lewis	0	0	0	0	0	18	19	8	11	7,715
Livingston	17	50	33	17	15,845	64	65	0	65	29,642
Madison	8	29	22	7	5,716	43	45	8	37	27,514
Monroe	722	2,603	1,854	749	500,624	1,404	1,511	93	1,418	709,684
Montgomery	41	137	95	42	21,999	61	87	20	67	39,599
Nassau	341	1,164	813	351	602,554	668	890	167	723	648,367
Niagara	110	397	280	117	66,732	301	319	17	302	148,535
Oneida	237	968	726	242	143,379	301	411	91	320	167,944
Onondaga	341	1,319	972	347	223,355	472	591	111	480	269,269
Ontario	15	48	33	15	12,623	138	144	9	135	107,194
Orange	175	599	425	174	242,598	299	352	43	309	319,849
Orleans	28	97	64	33	17,126	40	52	11	41	19,153
Oswego	66	231	160	71	40,733	168	201	31	170	83,842
Otsego	2	8	6	2	1,786	29	29	3	26	16,318
Putnam	0	0	0	0	0	16	16	1	15	8,703
Rensselaer	127	440	312	128	82,082	66	99	29	70	59,071
Rockland	56	184	127	57	45,808	242	363	106	257	162,138
St. Lawrence	56	196	134	62	30,084	180	226	42	184	84,703
Saratoga	3	12	9	3	1,130	40	41	0	41	40,895
Schenectady	112	412	297	115	83,353	209	244	23	221	123,156
Schoharie	5	21	16	5	3,252	15	15	0	15	14,802
Schuyler	2	10	7	3	1,768	18	19	0	19	8,986
Seneca	12	40	27	13	9,015	43	44	3	41	23,049
Steuben	28	86	56	30	14,621	98	116	20	96	60,097
Suffolk	415	1,521	1,075	446	1,009,777	946	1,206	224	982	1,084,957
Sullivan	36	119	83	36	27,785	88	102	13	89	61,046
Tioga	7	38	30	8	6,286	22	22	0	22	21,564
Tompkins	28	95	64	31	20,657	177	186	18	168	119,450
Ulster	72	233	154	79	80,197	163	207	37	170	122,147
Warren	2	8	6	2	454	28	29	0	29	17,330
Washington	4	13	10	3	2,864	37	44	12	32	23,163
Wayne	9	26	17	9	2,541	70	87	21	66	33,297
Westchester	573	1,850	1,261	589	950,037	1,198	1,330	95	1,235	923,171
Wyoming	3	11	8	3	2,266	23	23	0	23	11,119
Yates	2	7	6	1	1,329	16	16	0	16	8,310

Note: A breakout of Safety Net Assistance-FNP-Cash and Safety Net Assistance-FNP-Non-Cash data is not available for New York City.

* The Non-MOE category includes otherwise Temporary Assistance for Needy Families eligible or otherwise Safety Net Assistance MOE eligible non-disabled two-parent cases.

Table 16
SUPPLEMENTAL NUTRITION ASSISTANCE PROGRAM
Households, Persons and Value of Supplemental Nutrition Assistance Program Benefits by Local District
August 2020

Local District	Total			Temporary Assistance			Non-Temporary Assistance		
	Households	Persons	SNAP Benefits	Households	Persons	SNAP Benefits	Households	Persons	SNAP Benefits
New York State	1,592,924	2,756,187	\$488,159,706	647,925	933,391	\$170,259,376	944,999	1,822,796	\$317,900,330
New York City	985,088	1,683,674	298,690,166	447,232	670,159	121,606,208	537,856	1,013,515	177,083,958
Rest of State	607,836	1,072,513	189,469,540	200,693	263,232	48,653,168	407,143	809,281	140,816,372
Albany	18,966	33,989	5,969,850	5,730	7,326	1,353,485	13,236	26,663	4,616,365
Allegany	2,661	4,507	804,807	1,023	1,258	234,386	1,638	3,249	570,421
Broome	14,822	24,597	4,362,939	5,883	7,799	1,437,623	8,939	16,798	2,925,316
Cattaraugus	5,680	9,985	1,762,083	2,000	2,509	468,299	3,680	7,476	1,293,784
Cayuga	4,844	8,456	1,513,616	1,486	1,947	358,213	3,358	6,509	1,155,403
Chautauqua	12,580	22,319	3,982,582	3,942	5,746	1,040,905	8,638	16,573	2,941,677
Chemung	7,330	13,205	2,333,560	2,132	2,595	484,858	5,198	10,610	1,848,702
Chenango	3,112	5,324	962,874	970	1,132	214,720	2,142	4,192	748,154
Clinton	6,621	10,670	1,914,832	2,318	2,720	513,585	4,303	7,950	1,401,247
Columbia	3,350	5,412	964,294	1,137	1,398	260,665	2,213	4,014	703,629
Cortland	3,078	5,389	947,308	931	1,147	214,166	2,147	4,242	733,142
Delaware	2,343	3,916	698,721	715	823	155,999	1,628	3,093	542,722
Dutchess	10,510	16,652	3,021,773	3,688	4,454	840,187	6,822	12,198	2,181,586
Erie	79,308	144,314	25,275,214	24,655	34,772	6,310,222	54,653	109,542	18,964,992
Essex	1,818	2,994	544,343	635	673	130,482	1,183	2,321	413,861
Franklin	3,788	6,276	1,130,479	1,532	1,835	345,456	2,256	4,441	785,023
Fulton	4,090	6,628	1,188,924	1,377	1,529	292,810	2,713	5,099	896,114
Genesee	2,609	4,259	763,295	839	1,000	187,534	1,770	3,259	575,761
Greene	2,637	4,188	754,329	910	1,075	201,727	1,727	3,113	552,602
Hamilton	175	260	47,277	47	52	9,853	128	208	37,424
Herkimer	4,740	8,254	1,470,314	1,199	1,487	277,894	3,541	6,767	1,192,420
Jefferson	7,777	13,352	2,374,493	2,617	3,370	623,929	5,160	9,982	1,750,564
Lewis	1,488	2,580	456,625	416	483	92,309	1,072	2,097	364,316
Livingston	3,402	5,827	1,032,082	1,105	1,413	262,444	2,297	4,414	769,638
Madison	3,275	5,669	1,001,670	968	1,164	218,288	2,307	4,505	783,382
Monroe	58,306	101,177	17,972,210	22,188	30,561	5,583,586	36,118	70,616	12,388,624
Montgomery	3,850	7,055	1,236,516	1,338	1,781	326,608	2,512	5,274	909,908
Nassau	30,009	43,075	7,911,632	12,537	15,434	2,899,122	17,472	27,641	5,012,510
Niagara	14,973	24,637	4,382,210	4,789	6,102	1,129,872	10,184	18,535	3,252,338
Oneida	19,172	36,496	6,427,308	6,565	9,488	1,722,972	12,607	27,008	4,704,336
Onondaga	35,945	65,734	11,483,053	12,381	18,425	3,311,015	23,564	47,309	8,172,038
Ontario	4,791	7,582	1,360,517	1,662	1,983	374,165	3,129	5,599	986,352
Orange	16,743	39,078	6,587,434	5,011	6,397	1,188,044	11,732	32,681	5,399,390
Orleans	2,872	5,154	900,571	934	1,321	239,367	1,938	3,833	661,204
Oswego	8,674	16,231	2,846,462	2,621	3,759	685,247	6,053	12,472	2,161,215
Otsego	2,809	4,616	823,537	940	1,057	200,854	1,869	3,559	622,683
Putnam	1,446	2,033	375,745	494	535	103,332	952	1,498	272,413
Rensselaer	7,144	12,685	2,233,903	2,706	3,849	697,679	4,438	8,836	1,536,224
Rockland	14,441	41,643	6,772,055	3,481	4,225	792,880	10,960	37,418	5,979,175
St. Lawrence	7,127	12,297	2,177,563	2,736	3,440	639,532	4,391	8,857	1,538,031
Saratoga	7,501	11,979	2,133,086	1,967	2,149	410,337	5,534	9,830	1,722,749
Schenectady	11,329	20,930	3,638,528	4,108	5,489	1,002,919	7,221	15,441	2,635,609
Schoharie	1,971	3,381	599,420	486	556	105,049	1,485	2,825	494,371
Schuyler	1,162	1,980	351,718	302	368	68,933	860	1,612	282,785
Seneca	1,684	2,829	496,128	553	673	125,656	1,131	2,156	370,472
Steuben	5,444	9,576	1,717,431	1,940	2,448	459,087	3,504	7,128	1,258,344
Suffolk	60,032	97,348	17,631,739	17,668	22,037	4,190,631	42,364	75,311	13,441,108
Sullivan	6,070	12,076	2,077,126	1,855	2,299	430,412	4,215	9,777	1,646,714
Tioga	2,533	4,628	803,243	736	904	167,792	1,797	3,724	635,451
Tompkins	4,172	6,871	1,224,288	1,436	1,764	329,808	2,736	5,107	894,480
Ulster	10,187	16,532	2,949,163	3,154	3,804	714,604	7,033	12,728	2,234,559
Warren	3,575	5,818	1,033,785	1,097	1,220	231,916	2,478	4,598	801,869
Washington	3,427	6,004	1,058,286	1,048	1,300	241,071	2,379	4,704	817,215
Wayne	4,667	7,737	1,375,003	1,590	1,896	356,367	3,077	5,841	1,018,636
Westchester	42,283	72,398	12,908,814	13,258	17,251	3,203,666	29,025	55,147	9,705,148
Wyoming	1,378	2,137	384,434	480	550	104,437	898	1,587	279,997
Yates	1,115	1,774	318,348	377	460	86,169	738	1,314	232,179

Note: Supplemental Nutrition Assistance Program households containing only Supplemental Security Income recipients or a mix of Temporary Assistance and Supplemental Security Income recipients are counted as Temporary Assistance.

Table 17
SUPPLEMENTAL SECURITY INCOME
 Recipients, Total Program Expenditures and Federal and State Shares, by Local District
 August 2020

Local District	Recipients	Expenditures		
		Total	Federal	State
New York State*	661,773	\$413,567,620	\$365,630,240	\$47,937,380
New York City	389,553	244,052,781	217,274,419	26,778,362
Rest of State	269,247	167,941,097	147,230,903	20,710,194
Albany	7,413	4,514,006	3,998,093	515,913
Allegany	1,500	928,362	829,744	98,618
Broome	7,554	4,865,513	4,403,894	461,619
Cattaraugus	2,545	1,565,068	1,377,103	187,965
Cayuga	1,993	1,274,632	1,104,365	170,267
Chautauqua	4,864	3,062,032	2,715,645	346,387
Chemung	3,316	1,984,589	1,763,794	220,795
Chenango	1,647	969,212	867,499	101,713
Clinton	2,939	1,784,144	1,575,416	208,728
Columbia	1,550	935,162	758,960	176,202
Cortland	1,181	766,859	690,474	76,385
Delaware	1,262	720,008	624,006	96,002
Dutchess	5,751	3,520,692	2,906,205	614,487
Erie	29,596	19,144,924	17,011,233	2,133,691
Essex	1,018	603,557	486,559	116,998
Franklin	1,827	1,169,709	1,011,989	157,720
Fulton	2,276	1,379,027	1,173,371	205,656
Genesee	1,283	761,140	640,709	120,431
Greene	1,451	884,862	768,669	116,193
Hamilton	71	37,962	34,224	3,738
Herkimer	1,781	1,054,868	916,520	138,348
Jefferson	3,033	1,874,806	1,639,441	235,365
Lewis	598	347,094	308,595	38,499
Livingston	1,303	843,143	766,430	76,713
Madison	1,412	891,903	788,622	103,281
Monroe	28,509	19,175,082	17,210,318	1,964,764
Montgomery	2,115	1,335,829	1,145,053	190,776
Nassau	17,545	10,192,478	8,774,954	1,417,524
Niagara	6,305	4,103,477	3,624,611	478,866
Oneida	8,348	5,282,401	4,714,298	568,103
Onondaga	15,250	9,933,917	8,938,336	995,581
Ontario	2,081	1,284,154	1,139,634	144,520
Orange	7,440	4,684,678	4,073,662	611,016
Orleans	1,004	626,918	565,419	61,499
Oswego	3,573	2,240,996	2,030,287	210,709
Otsego	1,475	879,834	741,751	138,083
Putnam	935	540,728	451,817	88,911
Rensselaer	4,707	2,967,666	2,602,639	365,027
Rockland	5,454	3,291,176	2,598,403	692,773
St. Lawrence	3,891	2,379,059	2,126,915	252,144
Saratoga	3,237	1,881,240	1,654,811	226,429
Schenectady	5,796	3,680,889	3,277,740	403,149
Schoharie	746	453,811	384,300	69,511
Schuyler	461	279,857	233,747	46,110
Seneca	857	549,263	488,238	61,025
Steuben	3,099	1,963,346	1,770,092	193,254
Suffolk	21,823	13,205,460	11,226,947	1,978,513
Sullivan	2,871	1,782,367	1,483,733	298,634
Tioga	1,235	730,686	656,145	74,541
Tompkins	1,663	1,040,725	900,630	140,095
Ulster	4,338	2,603,689	2,240,353	363,336
Warren	1,648	928,828	806,564	122,264
Washington	1,780	1,061,795	930,668	131,127
Wayne	2,317	1,418,508	1,269,661	148,847
Westchester	18,393	10,872,365	9,403,173	1,469,192
Wyoming	678	385,362	343,263	42,099
Yates	509	301,239	261,181	40,058
Mental Hygiene	2,973	1,573,742	1,124,918	448,824

* Only New York State includes Mental Hygiene

Table 18
SUPPLEMENTAL SECURITY INCOME
 Recipients by Living Arrangement and Location
 August 2020

Living Arrangement	New York State	New York City	Rest of State	Mental Hygiene
Living Alone	311,715	196,920	114,794	1
Living With Others	265,870	151,511	114,347	12
Living in Household of Another	31,287	18,808	12,479	0
Congregate Care Level 1	1,677	178	512	987
Congregate Care Level 2	25,638	9,570	15,414	654
Congregate Care Level 3	11,611	5,606	6,005	0
Title XIX Institution	9,865	5,857	3,798	210
Other*	4,110	1,110	1,898	1,102
Total	661,773	389,560	269,247	2,966

Table 19
SUPPLEMENTAL SECURITY INCOME
 Recipients by Living Arrangement and Category of Assistance
 August 2020

Living Arrangement	Total	Category of Assistance		
		Aged	Blind	Disabled
Living Alone	311,715	85,522	1,302	224,891
Living With Others	265,870	29,794	1,397	234,679
Living in Household of Another	31,287	9,087	258	21,942
Congregate Care Level 1	1,677	211	7	1,459
Congregate Care Level 2	25,638	1,956	91	23,591
Congregate Care Level 3	11,611	5,095	34	6,482
Title XIX Institution & Other*	13,975	1,677	81	12,217
Total	661,773	133,342	3,170	525,261

* "Other" includes recipients either a) residing in a private medical facility and Medicaid is paying for less than 50% of the cost of care, b) residing in certain publicly operated residential facilities serving 16 or fewer residents, or c) residing in a public emergency shelter for six calendar months during a nine month period. Such cases receive no state Supplemental Security Income supplement.

Table 20
CHILD SUPPORT COLLECTIONS (IV-D)
August 2020

Local District	Total	Current Assistance	Former Assistance	Never Assistance
New York State	\$157,482,467.20	\$6,316,341.74	\$92,021,756.53	\$59,144,368.93
New York City	69,273,925.96	3,267,816.75	41,266,718.68	24,739,390.53
Rest of State	88,208,541.24	3,048,524.99	50,755,037.85	34,404,978.40
Albany	2,283,936.61	67,414.81	1,228,976.20	987,545.60
Allegany	436,824.39	18,959.70	295,529.68	122,335.01
Broome	1,348,259.53	91,823.64	850,189.73	406,246.16
Cattaraugus	712,868.14	30,510.30	467,086.68	215,271.16
Cayuga	734,541.61	24,917.89	496,274.86	213,348.86
Chautauqua	1,063,965.67	70,136.18	709,207.36	284,622.13
Chemung	723,326.57	40,968.81	466,294.44	216,063.32
Chenango	406,430.46	29,032.14	243,986.98	133,411.34
Clinton	772,610.33	42,467.78	455,118.25	275,024.30
Columbia	436,721.55	17,439.03	282,702.15	136,580.37
Cortland	374,607.03	19,506.26	225,711.88	129,388.89
Delaware	322,708.25	18,150.78	225,819.89	78,737.58
Dutchess	2,375,765.53	73,580.48	1,307,908.66	994,276.39
Erie	7,179,167.15	387,531.84	4,560,795.13	2,230,840.18
Essex	249,005.71	10,451.42	147,067.40	91,486.89
Franklin	415,205.00	8,868.57	246,775.11	159,561.32
Fulton	529,517.03	18,303.01	391,122.46	120,091.56
Genesee	458,168.39	12,106.96	296,361.26	149,700.17
Greene	348,402.88	13,565.19	198,483.36	136,354.33
Hamilton	24,044.58	474.26	14,894.40	8,675.92
Herkimer	467,684.99	17,694.96	316,505.33	133,484.70
Jefferson	1,158,574.46	38,811.77	567,302.88	552,459.81
Lewis	300,323.94	7,924.24	221,810.74	70,588.96
Livingston	555,519.96	28,034.87	367,854.79	159,630.30
Madison	456,429.17	16,512.48	282,490.09	157,426.60
Monroe	6,017,696.07	221,362.20	3,888,282.29	1,908,051.58
Montgomery	549,041.54	25,537.13	394,970.09	128,534.32
Nassau	8,454,596.24	144,524.43	3,993,071.53	4,317,000.28
Niagara	1,947,586.11	95,316.82	1,357,676.44	494,592.85
Oneida	1,567,853.91	81,685.00	1,092,444.87	393,724.04
Onondaga	3,843,847.12	142,774.79	2,512,182.88	1,188,889.45
Ontario	888,858.90	36,891.96	575,179.61	276,787.33
Orange	3,284,256.44	78,461.70	1,500,216.69	1,705,578.05
Orleans	353,361.97	22,942.69	248,095.94	82,323.34
Oswego	1,198,196.53	52,653.36	816,773.92	328,769.25
Otsego	361,217.62	12,874.32	224,281.91	124,061.39
Putnam	551,112.57	3,172.92	235,479.32	312,460.33
Rensselaer	1,580,193.18	74,654.80	859,552.18	645,986.20
Rockland	1,948,056.56	34,143.93	1,008,672.39	905,240.24
St. Lawrence	929,761.90	36,013.71	616,125.10	277,623.09
Saratoga	1,553,869.75	17,760.27	833,710.82	702,398.66
Schenectady	1,382,562.94	55,224.86	738,719.69	588,618.39
Schoharie	322,122.25	11,942.25	214,653.15	95,526.85
Schuyler	133,244.53	5,939.07	101,174.64	26,130.82
Seneca	273,941.46	7,482.65	181,795.12	84,663.69
Steuben	827,198.21	32,352.87	541,871.02	252,974.32
Suffolk	13,473,178.01	345,605.58	7,161,095.78	5,966,476.65
Sullivan	639,886.73	26,699.28	364,938.57	248,248.88
Tioga	429,711.70	31,278.62	283,336.05	115,097.03
Tompkins	658,834.47	27,331.79	406,166.72	225,335.96
Ulster	1,435,952.62	53,460.37	827,581.72	554,910.53
Warren	657,479.33	17,933.24	375,135.46	264,410.63
Washington	645,624.45	34,991.85	444,535.01	166,097.59
Wayne	789,212.61	25,550.90	443,656.14	320,005.57
Westchester	6,869,455.44	165,049.82	3,331,554.89	3,372,850.73
Wyoming	355,633.98	12,365.50	213,365.67	129,902.81
Yates	150,387.17	9,358.94	102,472.53	38,555.70

Table 21
AGGREGATE CLAIMS
TOTAL TEMPORARY ASSISTANCE
Family Assistance and Safety Net Assistance
August 2020

Month	New York State			New York City			Rest of State		
	Recipients	Net Expenditures	Monthly Average Payment	Recipients	Net Expenditures	Monthly Average Payment	Recipients	Net Expenditures	Monthly Average Payment
September 2018	510,103	\$272,479,639	\$534.17	344,537	\$216,743,271	\$629.09	165,566	\$55,736,368	\$336.64
October 2018	508,049	\$236,971,949	\$466.44	343,220	\$180,640,959	\$526.31	164,829	\$56,330,990	\$341.75
November 2018	503,109	\$185,163,807	\$368.04	340,654	\$129,850,536	\$381.18	162,455	\$55,313,271	\$340.48
December 2018	499,612	\$411,894,698	\$824.43	338,460	\$347,869,341	\$1,027.80	161,152	\$64,025,357	\$397.30
January 2019	494,824	\$260,874,999	\$527.21	334,120	\$203,153,181	\$608.02	160,704	\$57,721,818	\$359.18
February 2019	491,918	\$216,644,917	\$440.41	333,620	\$161,272,962	\$483.40	158,298	\$55,371,955	\$349.80
March 2019	491,533	\$256,909,297	\$522.67	333,593	\$199,781,328	\$598.88	157,940	\$57,127,969	\$361.71
April 2019	481,992	\$190,182,498	\$394.58	327,171	\$135,991,314	\$415.66	154,821	\$54,191,184	\$350.02
May 2019	480,419	\$180,867,620	\$376.48	326,453	\$125,224,910	\$383.59	153,966	\$55,642,710	\$361.40
June 2019	474,208	\$195,820,788	\$412.94	323,176	\$143,076,854	\$442.72	151,032	\$52,743,934	\$349.22
July 2019	472,409	\$204,370,657	\$432.61	322,790	\$150,502,508	\$466.26	149,619	\$53,868,149	\$360.04
August 2019	472,885	\$198,377,345	\$419.50	322,705	\$146,571,933	\$454.20	150,180	\$51,805,412	\$344.96
September 2019	467,763	\$210,922,274	\$450.92	321,290	\$160,008,622	\$498.02	146,473	\$50,913,652	\$347.60
October 2019	469,024	\$196,796,901	\$419.59	321,738	\$142,044,358	\$441.49	147,286	\$54,752,543	\$371.74
November 2019	463,031	\$222,705,771	\$480.97	319,153	\$173,681,463	\$544.19	143,878	\$49,024,308	\$340.74
December 2019	462,357	\$551,433,822	\$1,192.66	319,174	\$490,988,074	\$1,538.31	143,183	\$60,445,748	\$422.16
January 2020	457,899	\$247,815,782	\$541.20	314,173	\$193,475,358	\$615.82	143,726	\$54,340,424	\$378.08
February 2020	459,285	\$200,310,433	\$436.14	317,410	\$149,169,956	\$469.96	141,875	\$51,140,477	\$360.46
March 2020	457,969	\$188,201,278	\$410.95	318,153	\$136,422,141	\$428.79	139,816	\$51,779,137	\$370.34
April 2020	465,525	\$179,932,037	\$386.51	326,301	\$128,843,253	\$394.86	139,224	\$51,088,784	\$366.95
May 2020	497,420	\$186,072,322	\$374.07	356,601	\$134,032,567	\$375.86	140,819	\$52,039,755	\$369.55
June 2020	509,624	\$198,158,851	\$388.83	370,261	\$144,605,174	\$390.55	139,363	\$53,553,677	\$384.27
July 2020	511,907	\$188,596,051	\$368.42	378,171	\$137,113,479	\$362.57	133,736	\$51,482,572	\$384.96
August 2020	507,562	\$194,093,323	\$382.40	379,399	\$148,266,761	\$390.79	128,163	\$45,826,562	\$357.56

Note: Data pursuant to a New York State Legislative mandate S. 6057-B/A. 9557-B, Chapter 57, L. 2004.

Based on local district claims submitted on claims Schedules A and C. Includes reimbursable expenditures for basic assistance, rent supplements, family shelters, domestic violence shelters, security deposits, transitional services, diversion transportation, diversion payments, and other non-assistance. These claims are net of cancellations and refunds, and include any reconciliations and supplemental claims applied to the month after initial expenditure reporting is done. Thus, these data differ from the expenditure data presented elsewhere in this document, which are derived from original payment issuance activity during the month, net of cancellations and refunds in that month.

District claiming activity for recent months is generally not complete before the statutorily required due date for this report. Thus, claims for recent months may appear substantially below those for earlier months. Claims tables in future months of this report will continue to include the historical periods above, adjusted for claiming activity occurring subsequent to this report.

Table 22
AGGREGATE CLAIMS
FEDERALLY PARTICIPATING - TANF
Family Assistance-FP and Safety Net Assistance-FP
August 2020

Month	New York State			New York City			Rest of State		
	Recipients	Net Expenditures	Monthly Average Payment	Recipients	Net Expenditures	Monthly Average Payment	Recipients	Net Expenditures	Monthly Average Payment
September 2018	198,032	\$119,117,145	\$601.50	114,579	\$93,127,061	\$812.78	83,453	\$25,990,084	\$311.43
October 2018	197,147	\$98,864,776	\$501.48	113,980	\$72,260,669	\$633.98	83,167	\$26,604,107	\$319.89
November 2018	194,207	\$63,612,583	\$327.55	112,175	\$37,685,906	\$335.96	82,032	\$25,926,677	\$316.06
December 2018	192,483	\$157,883,937	\$820.25	111,594	\$127,850,624	\$1,145.68	80,889	\$30,033,313	\$371.29
January 2019	191,565	\$115,893,173	\$604.98	111,186	\$89,647,450	\$806.28	80,379	\$26,245,723	\$326.52
February 2019	188,505	\$86,602,461	\$459.42	109,508	\$61,406,895	\$560.75	78,997	\$25,195,566	\$318.94
March 2019	187,414	\$104,646,696	\$558.37	109,107	\$78,505,214	\$719.52	78,307	\$26,141,482	\$333.83
April 2019	184,952	\$67,070,694	\$362.64	108,297	\$42,389,428	\$391.42	76,655	\$24,681,266	\$321.98
May 2019	185,257	\$61,048,737	\$329.54	109,080	\$36,273,146	\$332.54	76,177	\$24,775,591	\$325.24
June 2019	179,613	\$71,818,846	\$399.85	104,347	\$47,748,146	\$457.59	75,266	\$24,070,700	\$319.81
July 2019	179,019	\$77,015,012	\$430.21	104,099	\$52,637,799	\$505.65	74,920	\$24,377,213	\$325.38
August 2019	179,680	\$70,347,428	\$391.52	104,300	\$46,747,345	\$448.20	75,380	\$23,600,083	\$313.08
September 2019	177,792	\$78,718,000	\$442.75	103,743	\$54,790,966	\$528.14	74,049	\$23,927,034	\$323.12
October 2019	177,773	\$66,583,737	\$374.54	103,543	\$41,908,016	\$404.74	74,230	\$24,675,721	\$332.42
November 2019	175,242	\$90,999,908	\$519.28	102,564	\$68,709,682	\$669.92	72,678	\$22,290,226	\$306.70
December 2019	174,645	\$251,851,914	\$1,442.08	102,673	\$223,655,871	\$2,178.33	71,972	\$28,196,043	\$391.76
January 2020	172,068	\$107,720,222	\$626.03	100,309	\$83,494,396	\$832.37	71,759	\$24,225,826	\$337.60
February 2020	171,767	\$67,381,169	\$392.28	100,569	\$44,223,282	\$439.73	71,198	\$23,157,887	\$325.26
March 2020	170,457	\$63,483,409	\$372.43	100,454	\$40,401,186	\$402.19	70,003	\$23,082,223	\$329.73
April 2020	174,726	\$57,570,059	\$329.49	105,635	\$35,014,475	\$331.47	69,091	\$22,555,584	\$326.46
May 2020	186,522	\$59,921,432	\$321.26	116,655	\$37,061,844	\$317.70	69,867	\$22,859,588	\$327.19
June 2020	188,789	\$66,934,978	\$354.55	120,028	\$43,641,104	\$363.59	68,761	\$23,293,874	\$338.77
July 2020	185,829	\$57,182,407	\$307.72	120,022	\$35,031,062	\$291.87	65,807	\$22,151,345	\$336.61
August 2020	184,603	\$63,302,640	\$342.91	120,790	\$43,326,236	\$358.69	63,813	\$19,976,404	\$313.05

Note: Data pursuant to a New York State Legislative mandate S. 6057-B/A. 9557-B, Chapter 57, L. 2004.

Based on local district claims submitted on claims Schedules A and C. Includes reimbursable expenditures for basic assistance, rent supplements, family shelters, domestic violence shelters, security deposits, transitional services, diversion transportation, diversion payments, and other non-assistance. These claims are net of cancellations and refunds, and include any reconciliations and supplemental claims applied to the month after initial expenditure reporting is done. Thus, these data differ from the expenditure data presented elsewhere in this document, which are derived from original payment issuance activity during the month, net of cancellations and refunds in that month.

District claiming activity for recent months is generally not complete before the statutorily required due date for this report. Thus, claims for recent months may appear substantially below those for earlier months. Claims tables in future months of this report will continue to include the historical periods above, adjusted for claiming activity occurring subsequent to this report.

Table 23
AGGREGATE CLAIMS
FEDERALLY NON-PARTICIPATING
Safety Net Assistance-FNP Maintenance of Effort
August 2020

Month	New York State			New York City			Rest of State		
	Recipients	Net Expenditures	Monthly Average Payment	Recipients	Net Expenditures	Monthly Average Payment	Recipients	Net Expenditures	Monthly Average Payment
September 2018	116,583	\$63,210,113	\$542.19	85,930	\$55,344,688	\$644.07	30,653	\$7,865,425	\$256.60
October 2018	115,548	\$36,016,949	\$311.71	85,269	\$28,525,855	\$334.54	30,279	\$7,491,094	\$247.40
November 2018	116,435	\$27,744,470	\$238.28	86,279	\$20,128,697	\$233.30	30,156	\$7,615,773	\$252.55
December 2018	114,834	\$89,798,909	\$781.99	85,016	\$82,272,215	\$967.73	29,818	\$7,526,694	\$252.42
January 2019	110,907	\$39,921,597	\$359.96	81,326	\$32,004,987	\$393.54	29,581	\$7,916,610	\$267.62
February 2019	114,868	\$31,908,995	\$277.79	85,824	\$24,608,503	\$286.73	29,044	\$7,300,492	\$251.36
March 2019	115,363	\$55,230,249	\$478.75	86,443	\$47,570,119	\$550.31	28,920	\$7,660,130	\$264.87
April 2019	110,518	\$21,727,585	\$196.60	82,431	\$14,207,179	\$172.35	28,087	\$7,520,406	\$267.75
May 2019	108,595	\$26,054,069	\$239.92	80,767	\$18,705,175	\$231.59	27,828	\$7,348,894	\$264.08
June 2019	111,324	\$44,613,760	\$400.76	83,974	\$37,813,389	\$450.30	27,350	\$6,800,371	\$248.64
July 2019	110,471	\$34,635,812	\$313.53	83,312	\$27,510,174	\$330.21	27,159	\$7,125,638	\$262.37
August 2019	109,834	\$32,925,466	\$299.77	82,783	\$26,329,027	\$318.05	27,051	\$6,596,439	\$243.85
September 2019	109,374	\$40,767,816	\$372.74	82,667	\$33,946,076	\$410.64	26,707	\$6,821,740	\$255.43
October 2019	109,120	\$25,086,877	\$229.90	82,431	\$17,893,614	\$217.07	26,689	\$7,193,263	\$269.52
November 2019	108,718	\$42,541,696	\$391.30	82,745	\$36,375,924	\$439.61	25,973	\$6,165,772	\$237.39
December 2019	108,831	\$109,233,249	\$1,003.70	82,810	\$101,686,770	\$1,227.95	26,021	\$7,546,479	\$290.01
January 2020	106,756	\$39,070,996	\$365.98	80,845	\$32,113,131	\$397.22	25,911	\$6,957,865	\$268.53
February 2020	108,244	\$32,830,607	\$303.30	82,885	\$26,153,851	\$315.54	25,359	\$6,676,756	\$263.29
March 2020	107,731	\$38,091,850	\$353.58	82,644	\$31,457,568	\$380.64	25,087	\$6,634,282	\$264.45
April 2020	106,572	\$28,231,782	\$264.91	81,381	\$21,641,458	\$265.93	25,191	\$6,590,324	\$261.61
May 2020	110,756	\$28,515,380	\$257.46	85,533	\$22,137,339	\$258.82	25,223	\$6,378,041	\$252.87
June 2020	114,354	\$38,387,056	\$335.69	89,568	\$31,265,430	\$349.07	24,786	\$7,121,626	\$287.32
July 2020	115,882	\$30,534,465	\$263.50	92,135	\$24,222,014	\$262.90	23,747	\$6,312,451	\$265.82
August 2020	115,226	\$30,303,224	\$262.99	92,929	\$24,350,836	\$262.04	22,297	\$5,952,388	\$266.96

Note: Data pursuant to a New York State Legislative mandate S. 6057-B/A. 9557-B, Chapter 57, L. 2004.

Based on local district claims submitted on claims Schedules A and C. Includes reimbursable expenditures for basic assistance, rent supplements, family shelters, domestic violence shelters, security deposits, transitional services, diversion transportation, diversion payments, and other non-assistance. These claims are net of cancellations and refunds, and include any reconciliations and supplemental claims applied to the month after initial expenditure reporting is done. Thus, these data differ from the expenditure data presented elsewhere in this document, which are derived from original payment issuance activity during the month, net of cancellations and refunds in that month.

District claiming activity for recent months is generally not complete before the statutorily required due date for this report. Thus, claims for recent months may appear substantially below those for earlier months. Claims tables in future months of this report will continue to include the historical periods above, adjusted for claiming activity occurring subsequent to this report.

Table 24
AGGREGATE CLAIMS
FEDERALLY NON-PARTICIPATING
Safety Net Assistance-FNP and Family Assistance-FNP Non-Maintenance of Effort
August 2020

Month	New York State			New York City			Rest of State		
	Recipients	Net Expenditures	Monthly Average Payment	Recipients	Net Expenditures	Monthly Average Payment	Recipients	Net Expenditures	Monthly Average Payment
September 2018	195,488	\$90,152,381	\$461.17	144,028	\$68,271,522	\$474.02	51,460	\$21,880,859	\$425.20
October 2018	195,354	\$102,090,224	\$522.59	143,971	\$79,854,435	\$554.66	51,383	\$22,235,789	\$432.75
November 2018	192,467	\$93,806,754	\$487.39	142,200	\$72,035,933	\$506.58	50,267	\$21,770,821	\$433.10
December 2018	192,295	\$164,211,852	\$853.96	141,850	\$137,746,502	\$971.07	50,445	\$26,465,350	\$524.64
January 2019	192,352	\$105,060,229	\$546.19	141,608	\$81,500,744	\$575.54	50,744	\$23,559,485	\$464.28
February 2019	188,545	\$98,133,461	\$520.48	138,288	\$75,257,564	\$544.21	50,257	\$22,875,897	\$455.18
March 2019	188,756	\$97,032,352	\$514.06	138,043	\$73,705,995	\$533.94	50,713	\$23,326,357	\$459.97
April 2019	186,522	\$101,384,219	\$543.55	136,443	\$79,394,707	\$581.89	50,079	\$21,989,512	\$439.10
May 2019	186,567	\$93,764,814	\$502.58	136,606	\$70,246,589	\$514.23	49,961	\$23,518,225	\$470.73
June 2019	183,271	\$79,388,182	\$433.17	134,855	\$57,515,319	\$426.50	48,416	\$21,872,863	\$451.77
July 2019	182,919	\$92,719,833	\$506.89	135,379	\$70,354,535	\$519.69	47,540	\$22,365,298	\$470.45
August 2019	183,371	\$95,104,451	\$518.64	135,622	\$73,495,561	\$541.91	47,749	\$21,608,890	\$452.55
September 2019	180,597	\$91,436,458	\$506.30	134,880	\$71,271,580	\$528.41	45,717	\$20,164,878	\$441.08
October 2019	182,131	\$105,126,287	\$577.20	135,764	\$82,242,728	\$605.78	46,367	\$22,883,559	\$493.53
November 2019	179,071	\$89,164,167	\$497.93	133,844	\$68,595,857	\$512.51	45,227	\$20,568,310	\$454.78
December 2019	178,881	\$190,348,659	\$1,064.11	133,691	\$165,645,433	\$1,239.02	45,190	\$24,703,226	\$546.65
January 2020	179,075	\$101,024,564	\$564.15	133,019	\$77,867,831	\$585.39	46,056	\$23,156,733	\$502.80
February 2020	179,274	\$100,098,657	\$558.36	133,956	\$78,792,823	\$588.20	45,318	\$21,305,834	\$470.14
March 2020	179,781	\$86,626,019	\$481.84	135,055	\$64,563,387	\$478.05	44,726	\$22,062,632	\$493.28
April 2020	184,227	\$94,130,196	\$510.95	139,285	\$72,187,320	\$518.27	44,942	\$21,942,876	\$488.25
May 2020	200,142	\$97,635,510	\$487.83	154,413	\$74,833,384	\$484.63	45,729	\$22,802,126	\$498.64
June 2020	206,481	\$92,836,817	\$449.61	160,665	\$69,698,640	\$433.81	45,816	\$23,138,177	\$505.02
July 2020	210,196	\$100,879,179	\$479.93	166,014	\$77,860,403	\$469.00	44,182	\$23,018,776	\$521.00
August 2020	207,733	\$100,487,459	\$483.73	165,680	\$80,589,689	\$486.42	42,053	\$19,897,770	\$473.16

Note: Data pursuant to a New York State Legislative mandate S. 6057-B/A. 9557-B, Chapter 57, L. 2004.

Based on local district claims submitted on claims Schedules A and C. Includes reimbursable expenditures for basic assistance, rent supplements, family shelters, domestic violence shelters, security deposits, transitional services, diversion transportation, diversion payments, and other non-assistance. These claims are net of cancellations and refunds, and include any reconciliations and supplemental claims applied to the month after initial expenditure reporting is done. Thus, these data differ from the expenditure data presented elsewhere in this document, which are derived from original payment issuance activity during the month, net of cancellations and refunds in that month.

District claiming activity for recent months is generally not complete before the statutorily required due date for this report. Thus, claims for recent months may appear substantially below those for earlier months. Claims tables in future months of this report will continue to include the historical periods above, adjusted for claiming activity occurring subsequent to this report.

Table 25
HOME ENERGY ASSISTANCE PROGRAM*
Number and Dollar Amount of Benefits Authorized and Administrative Allocations - Federal Fiscal Year to Date
August 2020

Local District	Benefits Authorized		Administrative Allocations
	Number	Dollar Amount	
New York State	1,669,308	\$302,928,245	\$30,079,936
New York City	877,938	38,184,857	6,113,809
Rest of State	791,370	264,743,388	23,966,127
Albany	20,139	5,628,546	446,952
Allegany	5,639	2,532,782	270,221
Broome	20,899	7,719,300	663,400
Cattaraugus	10,940	4,410,099	419,730
Cayuga	7,221	3,000,873	272,065
Chautauqua	16,915	5,963,891	530,387
Chemung	9,177	2,772,327	261,693
Chenango	5,769	3,056,408	250,794
Clinton	11,740	6,450,310	533,996
Columbia	4,996	2,428,515	187,683
Cortland	4,912	2,012,216	187,981
Delaware	5,629	2,917,243	258,427
Dutchess	14,213	4,622,917	383,487
Erie	109,734	30,916,048	3,489,533
Essex	3,132	1,779,622	145,654
Franklin	8,071	4,602,898	394,757
Fulton	7,095	3,223,972	304,776
Genesee	3,786	1,300,888	120,325
Greene	5,120	2,628,867	222,820
Hamilton	391	211,172	18,223
Herkimer	8,226	3,734,897	336,626
Jefferson	11,779	4,830,739	377,843
Lewis	3,344	1,868,302	161,131
Livingston	4,746	2,011,483	179,833
Madison	5,255	2,446,110	224,592
Monroe	70,647	17,834,924	1,369,771
Montgomery	6,877	3,060,929	265,138
Nassau	19,872	3,895,589	383,232
Niagara	20,910	6,182,147	680,171
Oneida	27,982	10,787,977	994,228
Onondaga	39,201	10,927,410	848,492
Ontario	7,308	2,481,961	223,581
Orange	20,721	6,915,449	681,027
Orleans	4,492	1,919,809	184,606
Oswego	11,661	5,380,894	394,847
Otsego	5,929	3,181,994	273,630
Putnam	1,767	662,493	63,010
Rensselaer	11,679	4,464,291	406,767
Rockland	16,543	3,511,875	278,797
St. Lawrence	14,169	6,821,129	718,491
Saratoga	13,600	5,998,934	535,464
Schenectady	12,491	3,409,780	254,059
Schoharie	3,900	2,126,950	174,967
Schuyler	2,351	1,348,114	119,837
Seneca	2,888	1,204,425	111,949
Steuben	11,261	4,676,121	489,439
Suffolk	59,721	15,399,831	1,230,284
Sullivan	9,815	4,744,659	404,628
Tioga	5,858	3,015,256	276,318
Tompkins	5,955	1,998,550	165,872
Ulster	16,549	6,856,793	581,261
Warren	5,701	2,587,974	223,053
Washington	6,238	3,306,242	281,194
Wayne	6,873	2,665,151	218,311
Westchester	34,892	2,368,364	301,828
Wyoming	2,735	1,093,696	110,806
Yates	1,916	843,255	78,140

* Please Note: The Home Energy Assistance Program Federal Fiscal Year runs from October 1 through September 30.

Table 26
HOME ENERGY ASSISTANCE PROGRAM - NON-EMERGENCY*
Number, Total Dollar Amount and Average Dollar Amount of Benefits Authorized - Federal Fiscal Year to Date
August 2020

Local District	Autopay			Regular Non-Autopay			Cooling Assistance Component		
	Benefits Authorized	Dollar Amount Authorized	Average Dollar Amount	Benefits Authorized	Dollar Amount Authorized	Average Dollar Amount	Benefits Authorized	Dollar Amount Authorized	Average Dollar Amount
New York State	1,248,351	\$136,966,481	\$110	261,137	\$87,148,456	\$334	4,547	\$3,244,642	\$714
New York City	795,304	29,782,915	37	77,075	6,037,974	78	915	700,658	766
Rest of State	453,047	107,183,566	237	184,062	81,110,482	441	3,632	2,543,984	700
Albany	13,841	2,860,180	207	4,462	1,734,388	389	45	33,813	751
Allegany	2,131	820,690	385	1,974	942,483	477	61	45,774	750
Broome	11,522	2,985,564	259	5,505	2,486,256	452	168	117,467	699
Cattaraugus	4,629	1,567,659	339	3,146	1,407,512	447	117	75,297	644
Cayuga	3,448	1,148,842	333	2,214	987,472	446	39	28,879	740
Chautauqua	9,255	2,779,654	300	4,831	1,944,799	403	144	100,259	696
Chemung	5,600	1,191,390	213	2,325	862,566	371	61	48,427	794
Chenango	2,248	931,192	414	1,995	1,163,533	583	32	21,114	660
Clinton	4,574	2,089,269	457	2,839	1,655,436	583	72	50,841	706
Columbia	2,331	781,523	335	1,470	861,440	586	21	15,345	731
Cortland	2,341	711,287	304	1,311	652,909	498	31	20,065	647
Delaware	1,909	741,458	388	1,879	1,100,432	586	33	17,398	527
Dutchess	8,467	1,724,189	204	3,342	1,565,820	469	44	34,122	776
Erie	58,880	15,079,521	256	24,987	9,312,178	373	528	390,433	739
Essex	1,147	459,674	401	1,237	800,909	647	14	8,528	609
Franklin	2,758	1,122,642	407	2,138	1,377,838	644	80	54,431	680
Fulton	3,173	1,084,081	342	2,071	1,064,483	514	22	13,865	630
Genesee	2,204	622,999	283	1,040	455,063	438	45	32,523	723
Greene	2,078	762,873	367	1,397	837,555	600	6	3,938	656
Hamilton	153	59,777	391	134	84,031	627	1	750	750
Herkimer	3,503	1,165,372	333	2,406	1,209,798	503	47	31,519	671
Jefferson	6,052	1,982,989	328	3,007	1,365,155	454	99	69,601	703
Lewis	1,184	585,599	495	902	547,110	607	33	20,894	633
Livingston	2,365	805,671	341	1,341	652,482	487	47	29,102	619
Madison	2,243	763,543	340	1,727	910,161	527	25	18,270	731
Monroe	51,236	10,147,870	198	11,090	3,556,972	321	298	219,133	735
Montgomery	3,209	1,073,654	335	1,855	932,409	503	35	23,553	673
Nassau	15,402	1,812,496	118	2,834	1,266,743	447	35	27,778	794
Niagara	11,583	2,856,542	247	5,840	2,113,582	362	155	111,100	717
Oneida	14,544	4,147,729	285	7,177	3,203,114	446	114	78,197	686
Onondaga	26,571	5,960,211	224	8,854	2,989,767	338	163	114,831	704
Ontario	4,124	1,028,232	249	2,146	903,022	421	48	36,809	767
Orange	10,474	2,085,662	199	5,551	2,358,638	425	33	25,462	772
Orleans	2,086	747,909	359	1,292	626,542	485	80	60,273	753
Oswego	6,194	2,424,810	391	2,924	1,502,189	514	59	24,619	417
Otsego	2,179	843,537	387	1,878	1,144,244	609	38	21,392	563
Putnam	965	211,578	219	568	305,815	538	0	0	0
Rensselaer	5,811	1,479,817	255	3,417	1,537,535	450	94	69,500	739
Rockland	12,177	1,876,719	154	2,401	676,896	282	0	0	0
St. Lawrence	5,113	1,884,684	369	3,837	2,158,320	563	112	77,380	691
Saratoga	6,201	2,060,317	332	4,093	1,969,796	481	61	46,737	766
Schenectady	8,536	1,876,736	220	2,960	998,287	337	45	32,244	717
Schoharie	1,503	674,058	448	1,083	635,504	587	14	9,096	650
Schuyler	858	346,646	404	718	424,594	591	15	11,933	796
Seneca	1,316	409,358	311	992	481,272	485	13	6,076	467
Steuben	4,041	1,306,924	323	3,581	1,726,131	482	90	48,297	537
Suffolk	39,716	6,760,062	170	10,972	4,393,455	400	66	50,980	772
Sullivan	3,814	1,045,365	274	2,425	1,503,074	620	13	9,700	746
Tioga	2,003	877,395	438	1,572	895,052	569	36	18,197	505
Tompkins	3,315	725,654	219	1,562	672,085	430	23	14,798	643
Ulster	8,313	2,276,608	274	3,670	1,971,055	537	34	25,074	737
Warren	2,571	840,715	327	1,724	913,921	530	19	9,754	513
Washington	2,316	983,122	424	1,880	1,060,444	564	33	24,650	747
Wayne	3,836	1,243,475	324	2,138	900,725	421	38	29,264	770
Westchester	32,983	1,678,942	51	1,649	509,564	309	12	9,503	792
Wyoming	1,148	384,156	335	1,082	480,417	444	31	17,011	549
Yates	873	284,945	326	617	317,509	515	10	7,988	799

* Please Note: The Home Energy Assistance Program Federal Fiscal Year runs from October 1 through September 30.

Table 27
HOME ENERGY ASSISTANCE PROGRAM - EMERGENCY*
Number, Total Dollar Amount and Average Dollar Amount of Benefits Authorized - Federal Fiscal Year to Date
August 2020

Local District	Emergency			Furnace Replacement			Furnace Repair, Estimates, and Clean & Tune**		
	Benefits Authorized	Dollar Amount Authorized	Average Dollar Amount	Benefits Authorized	Dollar Amount Authorized	Average Dollar Amount	Benefits Authorized	Dollar Amount Authorized	Average Dollar Amount
New York State	150,682	\$69,981,188	\$464	1,109	\$4,265,586	\$3,846	3,482	\$1,321,892	\$380
New York City	4,608	1,553,630	337	17	96,022	5,648	19	13,658	719
Rest of State	146,074	68,427,558	468	1,092	4,169,564	3,818	3,463	1,308,234	378
Albany	1,742	914,718	525	15	67,057	4,470	34	18,391	541
Allegany	1,416	655,265	463	13	57,160	4,397	44	11,409	259
Broome	3,570	1,963,566	550	33	130,451	3,953	101	35,996	356
Cattaraugus	2,956	1,262,370	427	21	67,889	3,233	71	29,371	414
Cayuga	1,468	783,645	534	10	35,220	3,522	42	16,815	400
Chautauqua	2,607	1,026,364	394	27	100,478	3,721	51	12,337	242
Chemung	1,153	590,731	512	18	74,644	4,147	20	4,568	228
Chenango	1,430	836,371	585	19	74,202	3,905	45	29,996	667
Clinton	4,151	2,550,927	615	21	70,253	3,345	83	33,585	405
Columbia	1,099	661,951	602	21	95,245	4,535	54	13,012	241
Cortland	1,173	592,527	505	10	25,828	2,583	46	9,600	209
Delaware	1,718	962,166	560	17	63,306	3,724	73	32,484	445
Dutchess	2,244	1,164,275	519	21	91,029	4,335	95	43,483	458
Erie	24,919	5,538,452	222	144	500,463	3,475	276	95,002	344
Essex	686	419,645	612	15	72,424	4,828	33	18,442	559
Franklin	2,950	1,854,767	629	39	145,236	3,724	106	47,984	453
Fulton	1,776	1,001,547	564	14	42,004	3,000	39	17,992	461
Genesee	480	182,890	381	2	5,249	2,625	15	2,164	144
Greene	1,586	939,052	592	22	72,126	3,278	31	13,323	430
Hamilton	91	58,585	644	1	2,690	2,690	11	5,339	485
Herkimer	2,149	1,224,655	570	20	69,713	3,486	101	33,840	335
Jefferson	2,579	1,375,783	533	8	28,015	3,502	34	9,196	270
Lewis	1,181	685,900	581	5	19,115	3,823	39	9,683	248
Livingston	966	479,817	497	12	39,956	3,330	15	4,455	297
Madison	1,225	712,950	582	11	35,188	3,199	24	5,997	250
Monroe	7,881	3,750,045	476	43	131,321	3,054	99	29,583	299
Montgomery	1,718	955,780	556	15	60,551	4,037	45	14,981	333
Nassau	1,535	685,131	446	16	83,440	5,215	50	20,001	400
Niagara	3,211	978,811	305	29	93,739	3,232	92	28,372	308
Oneida	6,052	3,242,699	536	32	93,568	2,924	63	22,670	360
Onondaga	3,505	1,722,401	491	38	117,013	3,079	70	23,187	331
Ontario	936	427,831	457	19	72,267	3,804	35	13,800	394
Orange	4,554	2,306,529	506	20	93,380	4,669	89	45,778	514
Orleans	966	434,891	450	12	35,887	2,991	56	14,308	256
Oswego	2,452	1,387,262	566	8	29,733	3,717	24	12,281	512
Otsego	1,760	1,065,536	605	16	67,358	4,210	58	39,927	688
Putnam	203	115,775	570	3	16,575	5,525	28	12,750	455
Rensselaer	2,272	1,230,869	542	28	117,054	4,181	57	29,516	518
Rockland	1,939	946,790	488	1	3,825	3,825	25	7,644	306
St. Lawrence	4,996	2,547,151	510	34	132,764	3,905	77	20,830	271
Saratoga	3,145	1,770,190	563	31	132,587	4,277	69	19,306	280
Schenectady	904	439,110	486	11	51,810	4,710	35	11,592	331
Schoharie	1,248	741,600	594	10	46,110	4,611	42	20,582	490
Schuyler	720	421,787	586	23	132,120	5,744	17	11,034	649
Seneca	537	280,605	523	6	20,757	3,460	24	6,357	265
Steuben	3,458	1,486,360	430	18	60,164	3,342	73	48,244	661
Suffolk	8,723	3,989,699	457	24	118,364	4,932	220	87,270	397
Sullivan	3,450	2,117,241	614	13	42,548	3,273	100	26,732	267
Tioga	1,992	1,053,385	529	28	104,694	3,739	227	66,533	293
Tompkins	1,013	538,000	531	7	29,177	4,168	35	18,836	538
Ulster	4,439	2,474,464	557	18	78,824	4,379	75	30,768	410
Warren	1,305	740,430	567	12	54,928	4,577	70	28,226	403
Washington	1,921	1,121,415	584	21	93,225	4,439	67	23,387	349
Wayne	836	464,245	555	6	20,312	3,385	19	7,130	375
Westchester	237	149,327	630	3	16,225	5,408	8	4,803	600
Wyoming	467	199,450	427	3	11,367	3,789	4	1,295	324
Yates	384	203,830	531	5	22,936	4,587	27	6,047	224

* Please Note: The Home Energy Assistance Program Federal Fiscal Year runs from October 1 through September 30.

** \$560,034 was authorized for 2,266 Heating Equipment Clean and Tune benefits statewide. The average dollar amount per Clean and Tune benefit was \$247.

Table 28
FEDERAL ALL FAMILIES WORK PARTICIPATION RATES
TANF, Safety Net Assistance MOE and Combined TANF and Safety Net Assistance MOE
August 2020

Local District	Combined TANF and Safety Net Assistance MOE			TANF			Safety Net Assistance MOE		
	Rate	Numerator	Denominator	Rate	Numerator	Denominator	Rate	Numerator	Denominator
New York State*	12.5%	9,927	79,692	12.3%	5,848	47,383	12.6%	4,080	32,309
New York City*	11.7%	6,988	59,193	11.4%	3,917	33,872	12.1%	3,071	25,320
Rest of State	6.6%	1,091	16,556	5.3%	566	10,744	9.0%	525	5,812
Albany	5.7%	23	402	5.3%	15	285	6.8%	8	117
Allegany	1.7%	1	59	2.2%	1	45	0.0%	0	14
Broome	4.9%	26	536	4.3%	15	350	5.9%	11	186
Cattaraugus	1.9%	3	156	2.2%	3	134	0.0%	0	22
Cayuga	4.3%	6	138	1.8%	2	113	16.0%	4	25
Chautauqua	4.7%	24	512	4.0%	14	353	6.3%	10	159
Chemung	1.1%	1	88	1.4%	1	74	0.0%	0	14
Chenango	0.0%	0	39	0.0%	0	35	0.0%	0	4
Clinton	4.1%	4	97	4.1%	3	74	4.3%	1	23
Columbia	6.3%	4	63	4.3%	2	47	12.5%	2	16
Cortland	5.2%	3	58	4.5%	2	44	7.1%	1	14
Delaware	7.4%	2	27	8.0%	2	25	0.0%	0	2
Dutchess	3.0%	6	197	2.0%	3	151	6.5%	3	46
Erie	7.9%	222	2,812	6.2%	114	1,832	11.0%	108	980
Essex	0.0%	0	8	0.0%	0	7	0.0%	0	1
Franklin	3.9%	4	103	2.2%	2	89	14.3%	2	14
Fulton	11.5%	3	26	9.1%	2	22	25.0%	1	4
Genesee	0.0%	0	45	0.0%	0	35	0.0%	0	10
Greene	5.7%	2	35	3.8%	1	26	11.1%	1	9
Hamilton	0.0%	0	2	0.0%	0	2	N/A	0	0
Herkimer	5.6%	4	71	1.8%	1	55	18.8%	3	16
Jefferson	2.2%	5	229	2.9%	5	173	0.0%	0	56
Lewis	7.7%	1	13	7.7%	1	13	N/A	0	0
Livingston	5.3%	5	95	5.5%	4	73	4.5%	1	22
Madison	1.9%	1	53	0.0%	0	39	7.1%	1	14
Monroe	6.0%	140	2,344	4.6%	70	1,518	8.5%	70	826
Montgomery	10.8%	10	93	5.5%	3	55	18.4%	7	38
Nassau	10.9%	76	697	10.8%	39	360	11.0%	37	337
Niagara	2.9%	11	374	2.3%	6	256	4.2%	5	118
Oneida	8.4%	61	722	4.8%	21	434	13.9%	40	288
Onondaga	6.4%	104	1,616	5.6%	60	1,071	8.1%	44	545
Ontario	6.1%	6	99	6.0%	5	84	6.7%	1	15
Orange	9.8%	37	378	11.1%	23	207	8.2%	14	171
Orleans	8.0%	9	113	6.0%	5	83	13.3%	4	30
Oswego	2.3%	7	309	1.7%	4	234	4.0%	3	75
Otsego	0.0%	0	20	0.0%	0	19	0.0%	0	1
Putnam	0.0%	0	5	0.0%	0	5	N/A	0	0
Rensselaer	7.4%	21	284	6.1%	10	164	9.2%	11	120
Rockland	10.6%	15	141	13.8%	12	87	5.6%	3	54
St. Lawrence	8.3%	15	180	6.7%	8	120	11.7%	7	60
Saratoga	3.0%	1	33	3.3%	1	30	0.0%	0	3
Schenectady	2.7%	8	294	2.8%	5	179	2.6%	3	115
Schoharie	16.7%	2	12	0.0%	0	7	40.0%	2	5
Schuyler	0.0%	0	10	0.0%	0	8	0.0%	0	2
Seneca	0.0%	0	28	0.0%	0	19	0.0%	0	9
Steuben	8.9%	12	135	7.9%	8	101	11.8%	4	34
Suffolk	11.3%	125	1,104	7.6%	48	631	16.3%	77	473
Sullivan	7.3%	8	109	7.2%	5	69	7.5%	3	40
Tioga	3.3%	1	30	0.0%	0	25	20.0%	1	5
Tompkins	3.6%	4	110	1.3%	1	77	9.1%	3	33
Ulster	2.9%	5	170	2.9%	3	104	3.0%	2	66
Warren	8.0%	2	25	8.7%	2	23	0.0%	0	2
Washington	5.4%	3	56	5.9%	3	51	0.0%	0	5
Wayne	0.0%	0	74	0.0%	0	60	0.0%	0	14
Westchester	5.3%	58	1,091	5.8%	31	535	4.9%	27	556
Wyoming	0.0%	0	20	0.0%	0	17	0.0%	0	3
Yates	0.0%	0	16	0.0%	0	15	0.0%	0	1

* Statewide and New York City participation rates are estimated from federal disaggregated reporting samples, which are the source of the rates used by the United States Department of Health and Human Services to determine if a state has met participation goals. Because the sample size is insufficient to permit rate estimates for non-New York City districts, rates for those districts are derived directly from automated systems data. Thus, Rest of State and New York City numerators and denominators will not sum to the statewide total. Estimates are from the latest available quarterly sample.

Table 29
WORK SANCTION STATUS BY PRESENCE IN FEDERAL ALL FAMILIES WORK PARTICIPATION CALCULATION
TANF, Safety Net Assistance MOE and Combined TANF and Safety Net Assistance MOE
 August 2020

Local District	Combined TANF and Safety Net Assistance MOE		TANF		Safety Net Assistance MOE	
	Sanctioned in the Denominator	Sanctioned Removed From Denominator	Sanctioned in the Denominator	Sanctioned Removed From Denominator	Sanctioned in the Denominator	Sanctioned Removed From Denominator
New York State*	3,140	758	1,580	384	1,560	374
New York City*	1,902	515	978	345	924	170
Rest of State	1,030	86	449	42	581	44
Albany	54	0	24	0	30	0
Allegany	0	1	0	0	0	1
Broome	77	3	31	2	46	1
Cattaraugus	9	0	8	0	1	0
Cayuga	8	2	4	0	4	2
Chautauqua	35	1	21	0	14	1
Chemung	3	1	2	1	1	0
Chenango	1	0	1	0	0	0
Clinton	3	0	3	0	0	0
Columbia	10	1	5	0	5	1
Cortland	4	2	3	2	1	0
Delaware	0	0	0	0	0	0
Dutchess	0	0	0	0	0	0
Erie	106	11	45	1	61	10
Essex	0	0	0	0	0	0
Franklin	2	1	1	1	1	0
Fulton	0	4	0	4	0	0
Genesee	4	0	2	0	2	0
Greene	4	2	2	0	2	2
Hamilton	0	0	0	0	0	0
Herkimer	9	2	5	2	4	0
Jefferson	27	1	15	0	12	1
Lewis	0	0	0	0	0	0
Livingston	6	1	5	1	1	0
Madison	1	2	1	0	0	2
Monroe	233	22	86	15	147	7
Montgomery	9	0	4	0	5	0
Nassau	58	1	28	0	30	1
Niagara	56	9	16	4	40	5
Oneida	31	2	11	0	20	2
Onondaga	47	1	17	1	30	0
Ontario	2	0	2	0	0	0
Orange	11	3	8	1	3	2
Orleans	7	0	3	0	4	0
Oswego	8	5	5	3	3	2
Otsego	3	0	3	0	0	0
Putnam	0	0	0	0	0	0
Rensselaer	21	1	9	1	12	0
Rockland	11	1	6	1	5	0
St. Lawrence	24	2	12	1	12	1
Saratoga	0	0	0	0	0	0
Schenectady	50	1	22	0	28	1
Schoharie	0	0	0	0	0	0
Schuyler	0	0	0	0	0	0
Seneca	3	0	1	0	2	0
Steuben	4	1	2	1	2	0
Suffolk	28	1	9	0	19	1
Sullivan	9	0	5	0	4	0
Tioga	1	1	0	0	1	1
Tompkins	12	0	6	0	6	0
Ulster	12	0	4	0	8	0
Warren	0	0	0	0	0	0
Washington	1	0	1	0	0	0
Wayne	0	0	0	0	0	0
Westchester	25	0	10	0	15	0
Wyoming	0	0	0	0	0	0
Yates	1	0	1	0	0	0

* Statewide and New York City sanction rates are estimated from federal disaggregated reporting samples, which are the source of such data used by the United States Department of Health and Human Services to determine if a state has met participation goals. Because the sample size is insufficient to permit sanction estimates for non-New York City districts, data for those districts are derived directly from automated systems. Thus, Rest of State and New York City counts may not sum to the statewide total. This table uses a federal definition of sanction and includes only persons who are deemed a work eligible individual and are sanctioned for non-compliance for work or substance abuse requirements. Estimates are from the latest available quarterly sample.

Table 30
TEMPORARY ASSISTANCE CASES WITH EARNED INCOME
Cases, Average Gross Earned Income and Average Net Earned Income after Application of Disregards
August 2020

Local District	TANF			Safety Net Assistance MOE			Safety Net Assistance Non-MOE		
	Cases	Average Gross Earned Income	Average Net Earned Income	Cases	Average Gross Earned Income	Average Net Earned Income	Cases	Average Gross Earned Income	Average Net Earned Income
New York State	7,252	\$1,344	\$672	6,578	\$1,240	\$555	7,619	\$1,675	\$1,148
New York City	6,148	1,403	714	5,649	1,263	569	6,975	1,736	1,203
Rest of State	1,104	1,011	441	929	1,098	474	644	1,009	549
Albany	17	983	411	13	1,102	465	15	1,265	844
Allegany	3	846	345	1	256	76	3	337	181
Broome	14	850	350	17	1,212	516	8	404	198
Cattaraugus	5	601	235	2	940	391	10	314	111
Cayuga	6	845	347	7	757	313	3	1,131	485
Chautauqua	31	836	343	23	832	341	12	570	297
Chemung	4	549	211	0	0	0	1	484	394
Chenango	1	490	184	0	0	0	0	0	0
Clinton	7	941	392	3	639	264	2	327	230
Columbia	6	959	468	4	1,282	632	4	685	595
Cortland	2	931	387	1	440	161	3	231	136
Delaware	1	1,300	557	0	0	0	1	217	127
Dutchess	14	1,328	646	6	1,072	454	6	287	171
Erie	130	1,008	422	171	1,060	447	115	1,283	569
Essex	0	0	0	0	0	0	0	0	0
Franklin	5	628	247	4	824	337	7	473	185
Fulton	0	0	0	1	217	58	0	0	0
Genesee	1	864	315	0	0	0	0	0	0
Greene	6	759	301	2	694	278	0	0	0
Hamilton	0	0	0	0	0	0	0	0	0
Herkimer	4	722	296	1	1,849	809	4	458	263
Jefferson	13	726	293	10	636	278	10	413	205
Lewis	0	0	0	0	0	0	1	250	160
Livingston	5	792	323	1	1,291	553	7	618	280
Madison	1	429	156	1	1,699	740	0	0	0
Monroe	86	937	390	141	1,056	444	64	646	341
Montgomery	6	1,001	419	8	1,001	419	6	843	391
Nassau	119	1,215	567	69	1,356	641	69	1,294	805
Niagara	13	868	361	21	1,072	452	11	886	427
Oneida	23	890	368	54	1,143	485	31	1,067	492
Onondaga	103	876	361	89	1,108	472	41	1,237	536
Ontario	6	649	260	3	1,203	512	0	0	0
Orange	40	1,051	442	23	1,236	569	10	1,430	676
Orleans	7	1,445	623	4	1,272	544	5	448	253
Oswego	14	786	324	12	861	351	19	534	232
Otsego	2	467	174	0	0	0	1	16	0
Putnam	0	0	0	0	0	0	1	516	426
Rensselaer	10	827	339	27	959	400	7	1,369	847
Rockland	37	976	407	9	1,395	600	15	1,644	784
St. Lawrence	16	636	255	12	893	401	16	417	182
Saratoga	4	691	276	0	0	0	0	0	0
Schenectady	20	736	323	10	1,114	472	10	875	466
Schoharie	0	0	0	2	927	385	4	491	251
Schuyler	2	522	199	0	0	0	1	277	86
Seneca	1	613	241	0	0	0	3	776	444
Steuben	9	745	317	4	393	158	11	611	479
Suffolk	120	1,275	606	96	1,272	559	67	1,330	923
Sullivan	11	755	306	3	1,197	516	5	666	325
Tioga	0	0	0	2	782	432	0	0	0
Tompkins	3	467	106	3	924	308	8	775	689
Ulster	8	802	358	9	1,048	442	11	1,192	869
Warren	3	1,519	754	0	0	0	1	87	0
Washington	6	830	339	0	0	0	3	192	129
Wayne	6	885	366	1	138	22	0	0	0
Westchester	152	1,131	502	58	1,074	474	11	1,372	846
Wyoming	1	562	217	0	0	0	1	260	170
Yates	0	0	0	1	440	161	0	0	0