



2023 Statistical Report On the Operations of New York State Public Assistance Programs

Prepared By:
New York State Office of Temporary and Disability Assistance
Bureau of Data Management and Analysis

This page intentionally left blank

2023 Statistical Report on the Operations of New York State Public Assistance Programs

Table of Contents

Introduction	1
Recent Public Assistance Recipient Trends	2
Report Summary	4
Data Tables	
<u>Section (a) Applications</u>	11
Table 1: Applications Approved - Total Public Assistance, Family Assistance and Safety Net Assistance Programs	
Table 2: Application Denials and Reasons for Denial - Total Public Assistance	
Table 3: Application Denials and Reasons for Denial - Family Assistance Program	
Table 4: Application Denials and Reasons for Denial - Safety Net Assistance Program	
<u>Section (b) Case Closings and Transfers</u>	17
Table 5: Case Closings by Reason - Total Public Assistance	
Table 6: Case Closings by Reason - Family Assistance Program	
Table 7: Case Closings by Reason - Safety Net Assistance Program	
Table 8: Cases Transferred between Public Assistance Programs	
<u>Section (c) Subsidized Work Activities</u>	23
Table 9: Monthly Average Number of Recipients Participating in Subsidized Work Activities by Type of Activity and Average Weekly Hours in all Activities - Temporary Assistance for Needy Families	
Table 10: Monthly Average Number of Recipients Participating in Subsidized Work Activities by Type of Activity and Average Weekly Hours in all Activities - Safety Net MOE	
Table 11: Monthly Average Number of Recipients Participating in Subsidized Work Activities by Type of Activity and Average Weekly Hours in all Activities - Safety Net Non-MOE	
Table 12: Monthly Average Number of Recipients Receiving an Exemption from Participating in Work Activities - Temporary Assistance for Needy Families	
Table 13: Monthly Average Number of Recipients Receiving an Exemption from Participating in Work Activities - Safety Net MOE	
Table 14: Monthly Average Number of Recipients Receiving an Exemption from Participating in Work Activities - Safety Net Non-MOE	
Table 15: Consecutive Number of Months in Work Limited Status - Total Public Assistance	
Table 16: Consecutive Number of Months in Work Limited Status by Case Category	
Table 17: Average Number of Children Receiving Subsidized Child Care Funded under the NYS Child Care Block Grant	
Table 18: Expenditures in Support of Work Activities	
Section (c) Footnotes	

Section (d) Unsubsidized Work Activities **35**

Table 19: Monthly Average Number of Recipients Participating in Unsubsidized Employment and Average Weekly Hours

Section (d) Footnotes

Section (e) Training and Educational Activities **39**

Table 20: Monthly Average Number of Recipients Participating in Training and Education by Type of Activity and Average Weekly Hours in all Activities - Temporary Assistance for Needy Families

Table 21: Monthly Average Number of Recipients Participating in Training and Education by Type of Activity and Average Weekly Hours in all Activities - Safety Net MOE

Table 22: Monthly Average Number of Recipients Participating in Training and Education by Type of Activity and Average Weekly Hours in all Activities - Safety Net Non-MOE

Section (e) Footnotes

Section (f) Sanctions **45**

Table 23: Monthly Average Number of Recipients in Sanction Status - Total Public Assistance

Table 24: Monthly Average Number of Recipients in Sanction Status - Temporary Assistance for Needy Families

Table 25: Monthly Average Number of Recipients in Sanction Status - Safety Net MOE

Table 26: Monthly Average Number of Recipients in Sanction Status - Safety Net Non-MOE

Table 27: Monthly Average Number of Sanctioned Recipients Complying and the Average Number of Days until Compliance - Total Public Assistance

Table 28: Monthly Average Number of Sanctioned Recipients Complying and the Average Number of Days until Compliance - Temporary Assistance for Needy Families

Table 29: Monthly Average Number of Sanctioned Recipients Complying and the Average Number of Days until Compliance - Safety Net MOE

Table 30: Monthly Average Number of Sanctioned Recipients Complying and the Average Number of Days until Compliance - Safety Net Non-MOE

Table 31: Administrative Hearings - Hearings Requested - Total Public Assistance

Table 32: Administrative Hearings - Hearings Held - Total Public Assistance

Table 33: Administrative Hearings - Issues Affirmed - Total Public Assistance

Table 34: Administrative Hearings - Issues Reversed - Total Public Assistance

Table 35: Administrative Hearings - Issues Withdrawn - Total Public Assistance

Table 36: Administrative Hearings - Agency Correct When Made - Total Public Assistance

Table 37: Administrative Hearings - Agency Settled - Total Public Assistance

Table 38: Administrative Hearings - Other Disposition - Total Public Assistance

Table 39: Administrative Disqualification Hearings – Eligibility Hearings Requested and Dispositions

Section (g) Case Closings **63**

Section (g) Referral Note

Section (h) Substance Use Disorder Programs **65**

Table 40: Monthly Average Number of Public Assistance Recipients in a Congregate Care Level II Drug/Alcohol Treatment Facility

Table 41: Number of Recipients by Length of Initial Stay in a Congregate Care Level II Drug/Alcohol Treatment Facility - Total Public Assistance

Note: Section (i) referring to Pregnancy Prevention Programs is no longer applicable, as such programs are no longer funded through TANF.

Section (j) Disabled and Work Limited Recipients 69

Section (j) Referral Note

Note: Section (k) referring to the Food Assistance Program is no longer applicable.

Section (l) Domestic Violence 71

Table 42: Domestic Violence Summary Totals - Persons Indicating Current Danger, Persons for Whom Assessments were Credible, Persons with Waivers and Persons with New Waivers Granted during the Year

Table 43: Domestic Violence - Total Number of Active Waivers by Waiver Type

Table 44: Domestic Violence - Average Duration of Active Waivers by Waiver Type (in Months)

Appendix A: Welfare Reform Act of 1997 Reporting Provisions

This page intentionally left blank

2023 Statistical Report On the Operations of New York State Public Assistance Programs

Introduction

This report was prepared in fulfillment of the reporting requirements contained in the Welfare Reform Act of 1997 and was compiled by the Office of Temporary and Disability Assistance (OTDA) with data developed by OTDA and the Office of Children and Family Services (OCFS).¹ Although the law requires that this reporting should begin upon the yet-to-be-realized completion of the redesign of the Welfare Management System, we continue to report on as many of the requirements that our current data infrastructure allows.

Except where otherwise noted, the time period covered in this report is July 2022 through June 2023 (referred to as the report year). This time period was selected to allow for the compilation of a year's worth of data prior to the end of calendar year issuance date of the report.

For this 2023 report, readers should keep in mind that the report period covered months impacted by the COVID-19 pandemic, and the various effects of the pandemic on society as a whole and the government's response affected many of the statistics reported. Given the multifaceted nature of these effects, it would be very difficult if not impossible to estimate the impacts the pandemic had on each statistic, so no such analysis is included. Thus, caution should be used when comparing the data here to that in previous or subsequent reports, or assessing the absolute levels of current data, especially data related to participation in work activities.

What follows is a brief summary of current trends in the Public Assistance (PA) caseload for the July 2022 to June 2023 time period and a high-level summary of the data supplied in the main body of the report.²

¹ The reporting provisions are codified in §149, Part B of Chapter 436 of the laws of 1997. The full text of §149 is reproduced at the end of the report.

² Throughout this narrative and report, totals reported for monthly average statistics may not equal the sum of tabular entries.

Recent Public Assistance Recipient Trends

Figure 1 illustrates the trend in total PA recipients for the July 2022 to June 2023 period. During this time, the total recipient count increased by 60,298, from 527,503 to 587,801 or 11.4%. This increase follows the 14.7% increase observed in the previous report year. Caseloads statewide have continued to increase over the course of the reporting period.

**Figure 1: New York State Public Assistance Recipients
July 2022 to June 2023**

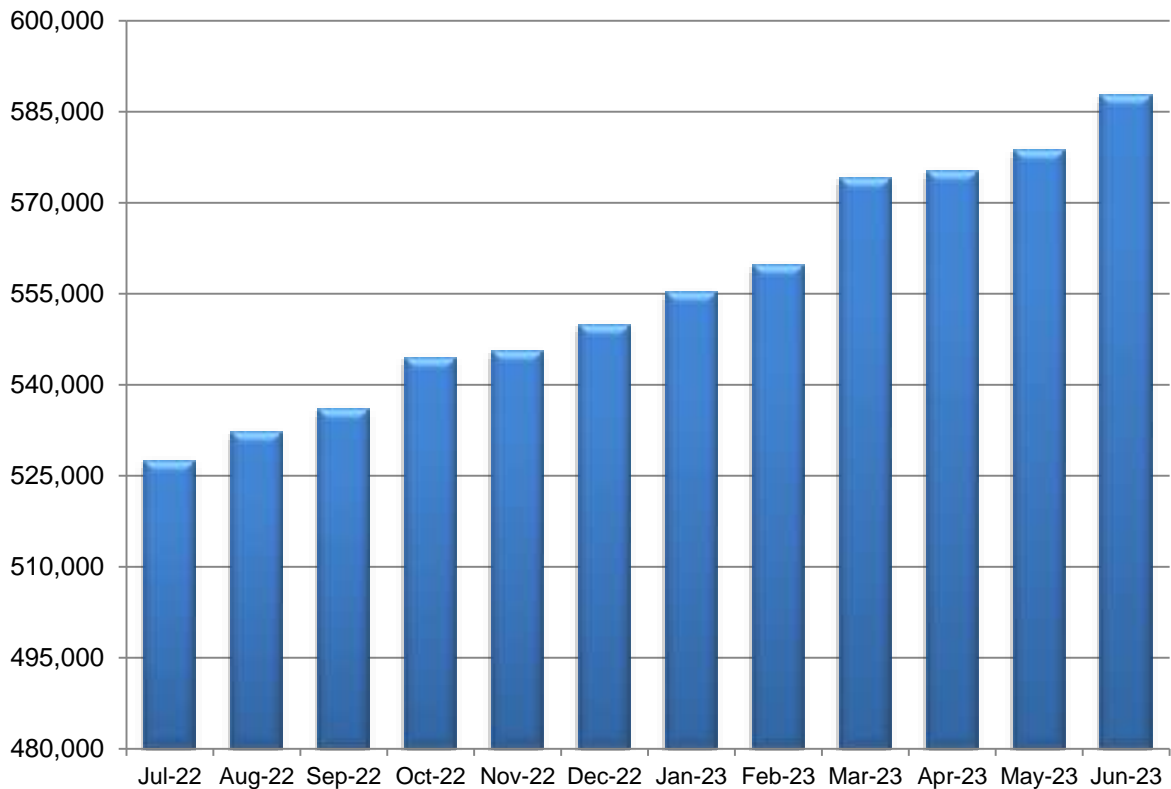


Figure 2 shows the recipient count change for the report period for “family” cases as a whole, and for each of this category’s components: 1) recipients in the Temporary Assistance for Needy Families (TANF) program (which consists of Family Assistance (FA) and a small number of federally funded Safety Net Assistance (SNA) families where an adult in the case is mandated into drug treatment), and 2) former TANF cases in the SNA program by virtue of exceeding the TANF 60 month time limit or cases that would be TANF except that they are barred from TANF participation due to their immigration status. These cases are referred to as SNA Maintenance of Effort (SNA MOE) cases because expenditures on these cases, while not TANF eligible, count toward a state’s requirement to maintain a certain level of historical assistance expenditures on families in order to access their TANF block grant funds.³

There was a 24,121 or 7.3% increase in the number of recipients in the family case category, which increased from 330,934 recipients to 355,055. This increase was almost equally shared in both the TANF and MOE categories, on both an absolute and percentage basis.

³ Note that the family recipient counts include persons in non-disabled two-parent cases, even though these cases were moved into the SNA Non-Maintenance of Effort (SNA Non-MOE) case category in October 2006 for the purposes of avoiding the risk of federal penalty for failure to meet extremely high work participation rates for this group. Such cases are distributed between the TANF and SNA MOE lines on Figure 2 based on the classification the case would have been in had they not been shifted.

Figure 2: New York State Recipients in “Family” (TANF and SNA MOE) Cases July 2022 to June 2023

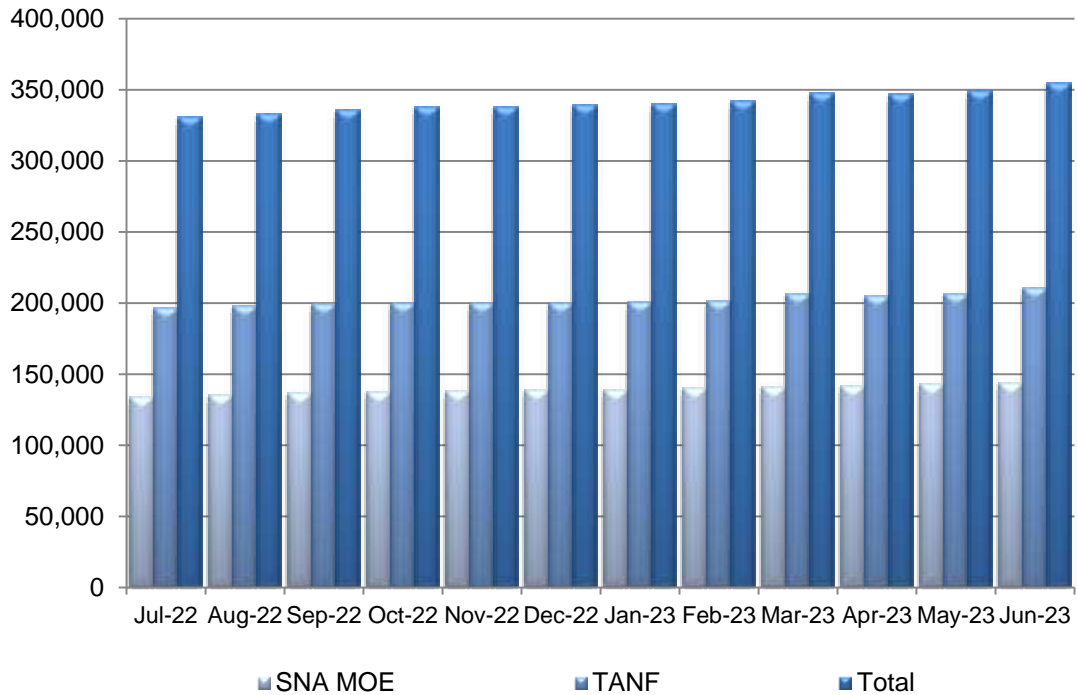
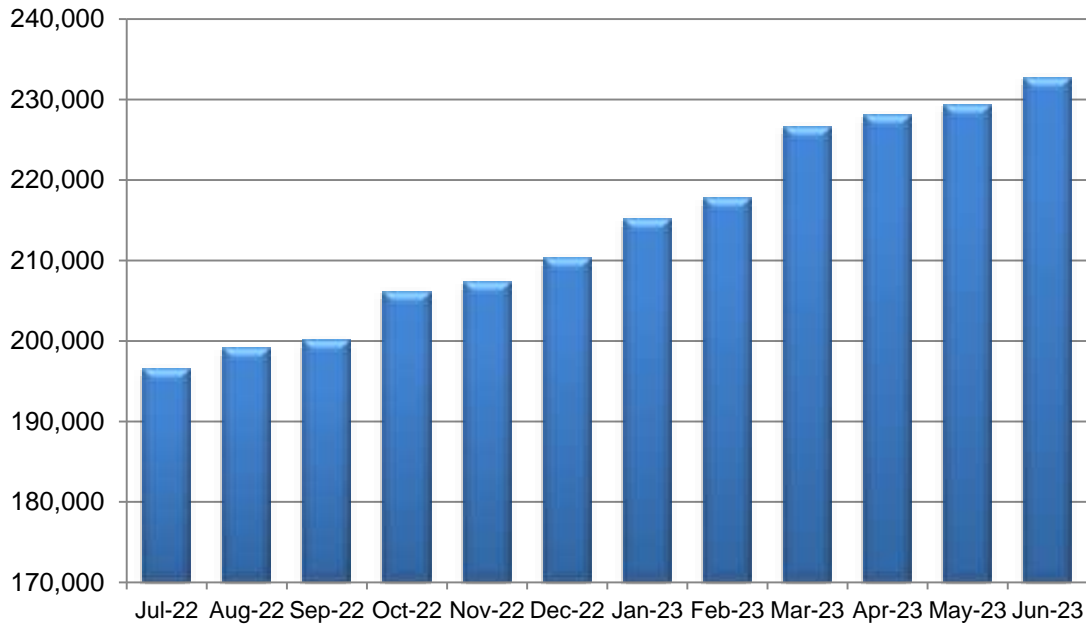


Figure 3 shows the report year trend for the recipient count for “traditional” SNA (Non-MOE) cases, usually referred to as “singles” cases since they consist primarily of one-person adult cases. There was an increase of 36,177 recipients or 18.4%, from 196,569 to 232,746.

Figure 3: New York State Recipients in “Singles” (SNA Non-MOE) Cases

July 2022 to June 2023



Report Summary

This summary, and the report as a whole, is organized by section headings that refer directly by letter to the subsections of the reporting requirements in statute. In some cases, reporting requirements for a particular section overlap with those in other sections. When this occurs, appropriate cross-references will be provided in the body of the report.

Section (a): Applications

Section (a) provides district level and statewide information on the number of case openings and denials, and the reasons for denials, for PA as a whole and for the FA and SNA categories. These numbers are summarized in Table S1.

**Table S1: Applications Approved and Denied
July 2022 to June 2023**

Public Assistance Applications	Application Approvals	Application Denials
Total Public Assistance	282,997	339,252
Family Assistance	71,311	95,943
Safety Net Assistance	211,686	243,309

The main reasons for application denials were failure to comply with application requirements, such as failure to appear for interviews or failure to provide documentation (188,719 or 55.6%), or employment-related requirements (5,143 or 1.5%). Denials related to financial issues (income and resources) totaled 65,087, or 19.2% of denials. There were 7,085 (2.1%) denials due to residence issues. Many denials (73,218 or 21.6%) fell into a miscellaneous “other” category. The denial codes in this category are not directly classifiable into the other categories. Denials in the “other” category include failure to locate the recipient, and cases where PA is denied but emergency assistance is provided.⁴

Section (b): Case Closings and Transfers

Section (b) provides district level and statewide information on the number of case closings, and closing counts by reason for closing, for PA as a whole and for the FA and SNA categories. It also provides district level and statewide information on transfers between the FA and SNA case categories that occurred during the year.

Case closings totaled 240,992 for total PA, 51,509 for FA and 189,483 for SNA. Overall, the most common reasons for PA case closings were failure to comply with program requirements not related to employment (138,315 or 57.4%) such as failure to recertify, and financial issues (41,663 or 17.3%) such as increased earnings or other income. Failure to comply with employment requirements totaled 3,997 or 1.7%. As was the case for denials, a large number of closings fell into the “other” category, mostly situations where the reason for closing was not directly classifiable into the other categories. The “other” category constituted 36,021 or 14.9% of closings. Client requests (8,428 or 3.5%) and residence issues (12,568 or 5.2%) rounded out the closing reasons.

Transfers from SNA to FA totaled 4,176 for the report year. Such transfers can occur for many reasons, including when an adult in an SNA case has a child, a time limited SNA case receives a time limit exemption, or an adult whose cash assistance count causes the case to be time limited leaves the household. Transfers from FA to SNA totaled 15,995. While a portion of these cases move from FA to SNA due to TANF time limits (an average of 466 TANF cases per month

⁴ Note that for trending purposes, denial and closing reason categories are not directly comparable to those that pertained previous to the 2014 report. This is because in that year a review of these code classifications resulted in some reassignment of codes across categories.

reached the 60-month limit), there are other reasons these transfers occur, such as a child “aging out” of TANF eligibility and creating an adult-only case.

Sections (c), (d) and (e): Subsidized Work Activities, Unsubsidized Work Activities and Training and Educational Activities

Section (c) provides data derived from both sample data and system data on the monthly average number of recipients participating in each subsidized or otherwise sponsored work activity exclusive of training and education activities, and the average number of hours engaged in subsidized activities per week. Also included are systems-derived data on the number of non-exempt and exempt adult recipients, with the non-exempts divided into those that are work limited and those that are not, and the exempts divided into three categories, disability/illness, substance use disorder and other (with the other category consisting primarily of caretaker situations). For those in work limited status, the duration of that status is provided. The above data is provided for each of the TANF, SNA MOE and SNA Non-MOE case types. Finally, Section (c) includes district level data on the number of persons receiving child care through the New York State Child Care Block Grant by PA status of the person, and federal and state expenditures on work activities, including Supplemental Nutrition Assistance Program Employment and Training expenditures.

Section (d) contains data on the number of TANF, SNA MOE and SNA Non-MOE recipients participating in unsubsidized employment and the average number of hours engaged per week, and Section (e) contains data on the number of recipients in training and education activities, and the average number of hours engaged per week.

Data Sources for Work Activities

The data source for work activity counts and hours in the activities varies by case category and region. For the rest of state region (all districts excluding New York City) all information on activities and hours regardless of case category is derived from the Welfare Reporting and Tracking System (WRTS), which receives data from the Welfare to Work Caseload Management System (the rest of state system for administering work programs) and the Welfare Management System (WMS, the State’s main eligibility system). For New York City and the State as a whole, TANF and SNA MOE information is derived from the quarterly disaggregated data reports submitted by New York State to the US Department of Health and Human Services for the purposes of reporting and calculating federal work participation rates. These reports contain detailed data on a representative sample of TANF and SNA MOE cases and are the only source of New York City and thus statewide data on federal work activities. It is important to note that because New York City and statewide activities data are sample-based in the TANF and SNA MOE instances, while activities for non-New York City districts are from systems data, the New York City and rest of state figures in these case categories will not sum to the statewide total. For SNA Non-MOE cases, the New York City data is based on reports submitted by the New York City Human Resources Administration (HRA), and the statewide data is a sum of the WRTS-derived data for the rest of state region and the reports submitted by HRA.

Summary of Section (c), (d) and (e) Data

Work Activities

An estimated monthly average of 276 TANF recipients, 406 SNA MOE recipients and 37,957 SNA Non-MOE recipients participated in subsidized or otherwise sponsored work activities (including subsidized public and private sector employment, on the job training, work experience, job search/job readiness training, community service, child care provider for a community service participant, substance use disorder treatment and other treatment activities).⁵ The statewide average hours of participation per week in these work activities were 12 and 24 for the TANF and SNA MOE recipients, respectively. The rest of state SNA Non-MOE recipients averaged 13

⁵ Work activity numbers are estimates both because the TANF and SNA MOE numbers are derived from sample and because a person may participate in more than one activity.

hours per week in these work activities (New York City HRA does not report hours in work activities for SNA Non-MOE recipients, as it only reports persons in activities if they meet or exceed the hours required). Also, an estimated monthly average of 14,476 TANF recipients, 9,183 SNA MOE and 7,113 SNA Non-MOE recipients participated in unsubsidized employment, with average weekly hours of 24, 24 and 19 (the latter rest of state only) for each case type respectively. An estimated monthly average of 437 TANF recipients, 256 SNA MOE and 1,091 SNA Non-MOE recipients participated in training or educational activities (including vocational education, job skills training, employment-related education and school attendance). The average number of hours per week participants spent in education and training activities was 20 hours for TANF, 14 hours for SNA MOE cases respectively, and 15 hours for rest of state SNA Non-MOE recipients.

Exemptions and the Work Limited

A monthly average of 10,631 TANF, 7,763 SNA MOE and 94,004 SNA Non-MOE adults were exempt from work activities (this is exclusive of the work limited persons discussed below). This represents 19.1%, 19.8% and 45.0% of the TANF, SNA MOE and SNA Non-MOE populations, respectively. For the TANF and SNA MOE caseloads, most exemptions fell within the illness/disability category and the “other” category, the latter of which consists primarily of persons exempt because they are a caretaker of a disabled family member, with the exemptions more prevalent in the illness/disability category. Relatively few fell into the substance use disorder category. For SNA Non-MOE, most (54,000 or 57.4% of the exempt) fell into the “other” category which in the SNA Non-MOE category consists mostly of exemptions due to advanced age and those contesting their employability determination. An additional 6,137 (6.5% of the exempts) fell into the substance use disorder category. The remaining 33,868 (36.0%) fell into the illness/disability category.

In order to assess the amount of time recipients remain in work limited (as opposed to exempt) status, we examined all adults coded as work limited at the end of the report period (June 2023) and looked backwards to see the consecutive number of months they had been in that status. Of the 7,043 adult recipients classified as work limited in that month (715 in TANF 2,085 in SNA MOE and 4,243 in SNA Non-MOE), 19.2% were classified work limited for 0 to 3 months, 20.0% for 4 to 6 months, 22.3% between 7 and 12 months, and the remaining 38.5% for 13 months or more.

Child Care

During the report period, a monthly average of 82,769 children received subsidized child care under the New York State Child Care Block Grant, 20,924 in PA and 61,845 in the low income category. These figures do not include child care subsidies that are distributed through several demonstration projects for students at CUNY and SUNY schools and migrant farm workers through the NYS Department of Agriculture and Markets.

Expenditures

Federal, state and local expenditures in support of work activities totaled \$317,914,723 for the October 2021 to September 2022 period (Federal Fiscal Year 2022), including \$111,370,428 in Supplemental Nutrition Assistance Program Employment and Training funds. The Federal Fiscal Year 2022 data is used, as opposed to the report period, to coincide with required expenditure reporting periods.

Section (f): Sanctions

Section (f) provides statewide and district level data on the monthly average number of recipients in sanction status, the type of sanction, the number of recipients that complied, and the average days to compliance in TANF, SNA MOE and SNA Non-MOE cases. The monthly average number of sanctioned persons for the report year was 2,745, which represents about 0.8% of the 322,958 monthly average number of adult recipients for the period. A portion (556 or 20.3%) of these sanctioned persons had an employment-related sanction. Each month, an average of 66

persons complied with requirements and ended their sanction. The average length of time to compliance for these persons was 315 days. Note that litigation, law changes and the COVID-19 pandemic have had effects on sanction activity, most notably in New York City. Comparisons to previous reports should be made with those changes in mind.

Section (f) also provides district level and statewide data on the number of sanction-related and work activity-related (the two overlap) fair hearings requested, the number of hearings held, and the outcomes of these hearings, for the full report year.⁶ Readers of this section should note that the numbers reported are based on issues addressed, not hearings per se: more than one issue can be addressed at a hearing, and separate issues addressed at the same hearing can have different outcomes.⁷

For the purposes of economy of presentation, Section (f) also contains fair hearings data on work-related issues, since these overlap with sanction-related hearings and follow a similar format. Also included in this section are data on the number and outcomes of administrative disqualification hearings, i.e., hearings initiated by districts.

Due to the large number of tables in the fair hearings section, they will not be summarized here. Readers should note, however, that outcome numbers will not sum exactly to hearing numbers since some issues initiated during the report year may still have been pending at the end of the report year, and issues from the previous year may have been resolved in the current year.

Section (g): Case Closings

All data available to meet the case closings requirements of this section were presented in Sections (b) and (c). We no longer present data on transitional Medicaid receipt because some follow-up data is no longer on WMS (our report source) due to changes to the Medicaid program brought on by the Affordable Care Act and the institution of New York's health care exchange.

Section (h): Substance Use Disorder Treatment Programs

Section (h) provides the monthly average number of PA persons residing in Congregate Care Level II drug and alcohol treatment facilities during the report period. This information is provided at the district level and by TANF, SNA MOE and SNA Non-MOE case type. For the report year, the monthly average number of persons receiving treatment in these facilities was 3,681, with most (3,619 or 98.3%) in the SNA Non-MOE program.

Section (h) also contains data on the duration of spells in these facilities, for persons entering in the period from July to December 2022. For the 3,138 entrants during this period, 10.0% had a spell of one month or less, 10.4% two months, 10.2% three months, 10.9% four months, 7.4% five months and 51.1% six months or more.

Section (i): Pregnancy Prevention Programs

TANF funding for pregnancy prevention programs was discontinued, so those programs are no longer included in this report. Data for non-TANF pregnancy prevention programs can be obtained from the Department of Health.

⁶ Fair hearings outcomes described in the report are issues affirmed (i.e., the agency's determination is deemed correct), issues reversed (i.e., where the agency's determination is incorrect), issues withdrawn, issues correct when made (i.e., where the agency was correct at the time the decision was made, but changes in circumstances require agency action in favor of the client), issues settled (i.e., where the issues are resolved through the Pre-Hearing Disposition process) and a catch-all "other" category.

⁷ In previous reports, fair hearings tables included a breakout by Family Assistance and Safety Net Assistance. Starting with the 2018 report only total PA tables are included, to consolidate report tables with few entries.

Section (j): Disabled and Work Limited Recipients

All data available to meet the requirements of this section were reported in Section (c) above.

Section (k): Food Assistance Program

The Food Assistance Program is no longer an active program.

Section (l): Domestic Violence

Section (l) reports district level and statewide data for the report year on the number of persons indicating a current danger on their domestic violence screening form, the number of persons whose domestic violence assessments showed a credible threat, the number of persons with a waiver from program requirements as a result of domestic violence, and the number of persons with new waivers granted during the year. Also reported is the number of active waivers broken down by the program requirements that are waived (e.g., time limits, employment, child support, etc.), as well as the average duration of waivers by waiver type.

For the reporting period 9,454 persons checked that there was a current domestic violence danger to them on the screening form. During the same period, 6,630 persons underwent a full domestic violence assessment where a credible threat was confirmed, and 6,545 persons were granted waivers.⁸ For the report period 7,788 persons had domestic violence waivers, including persons whose waivers were granted previous to the report year. These persons had a total of 15,551 active waivers during the report year. The number of waivers exceeds the number of persons with waivers because waivers are specific to the requirement for which the waiver is granted, not a blanket exception from all program requirements. That is, a single domestic violence victim can have more than one waiver. For example, if the person is exempted from both child support and work requirements, they will have two waivers. Note also that the number of active waivers for the year, like the number of persons with active waivers, includes those carried over from previous years.

Most domestic violence waivers were granted either from the requirement to cooperate in the establishment of child support (10,673), or from the requirement to participate in employment activities (4,359). Waivers active during the period averaged five months in duration

⁸ Note that the percentage of domestic violence interviews that result in a credible threat cannot be determined by taking the ratio of interviews that result in a credible threat to the number of persons indicating a current danger. This is because some of the difference between the number indicating a threat and the number where a credible threat was found is due to the client electing not to proceed to the interview stage.

Data Tables

This page intentionally left blank

Section (a)

Applications

- Applications approved
- Application denials and reasons for denial

**Table 1: Applications Approved
Total Public Assistance, Family Assistance and Safety Net Assistance Programs
July 2022 - June 2023**

Local District	Total Public Assistance Approved	Family Assistance	Safety Net Assistance
New York State	282,997	71,311	211,686
New York City	211,206	49,118	162,088
Rest of State	71,791	22,193	49,598
Albany	2,195	719	1,476
Allegany	214	69	145
Broome	3,531	807	2,724
Cattaraugus	1,124	260	864
Cayuga	769	214	555
Chautauqua	1,916	637	1,279
Chemung	1,439	373	1,066
Chenango	204	69	135
Clinton	1,107	275	832
Columbia	353	95	258
Cortland	420	133	287
Delaware	148	74	74
Dutchess	1,094	334	760
Erie	6,752	2,534	4,218
Essex	69	26	43
Franklin	501	112	389
Fulton	450	141	309
Genesee	253	69	184
Greene	307	104	203
Hamilton	3	1	2
Herkimer	473	118	355
Jefferson	1,025	208	817
Lewis	51	17	34
Livingston	426	103	323
Madison	163	55	108
Monroe	5,318	2,049	3,269
Montgomery	270	114	156
Nassau	3,275	821	2,454
Niagara	1,972	577	1,395
Oneida	1,339	427	912
Onondaga	4,999	1,510	3,489
Ontario	1,116	241	875
Orange	1,574	551	1,023
Orleans	530	136	394
Oswego	1,451	487	964
Otsego	161	54	107
Putnam	82	18	64
Rensselaer	972	585	387
Rockland	825	236	589
St. Lawrence	972	321	651
Saratoga	275	83	192
Schenectady	1,672	702	970
Schoharie	105	43	62
Schuyler	110	38	72
Seneca	285	98	187
Steuben	903	235	668
Suffolk	10,955	3,058	7,897
Sullivan	492	143	349
Tioga	186	39	147
Tompkins	720	163	557
Ulster	1,060	287	773
Warren	447	111	336
Washington	409	157	252
Wayne	391	93	298
Westchester	3,623	1,181	2,442
Wyoming	127	39	88
Yates	188	49	139

**Table 2: Application Denials and Reasons for Denial
Total Public Assistance
July 2022 - June 2023**

Local District	Total Denials	Financial Issues	Residence Issues	Compliance Issues		Other
				Employment	Other	
New York State	339,252	65,087	7,085	5,143	188,719	73,218
New York City	213,548	42,238	912	248	115,882	54,268
Rest of State	125,704	22,849	6,173	4,895	72,837	18,950
Albany	4,213	297	506	49	2,811	550
Allegany	581	88	16	94	329	54
Broome	4,560	738	195	34	2,288	1,305
Cattaraugus	1,070	96	129	41	686	118
Cayuga	707	33	71	50	466	87
Chautauqua	3,571	296	76	309	1,778	1,112
Chemung	2,330	87	40	68	1,704	431
Chenango	554	22	25	0	504	3
Clinton	943	19	21	3	450	450
Columbia	580	30	97	19	205	229
Cortland	670	44	25	47	543	11
Delaware	352	54	8	14	220	56
Dutchess	3,489	914	259	73	1,304	939
Erie	9,214	910	196	186	7,798	124
Essex	241	6	7	30	177	21
Franklin	476	33	32	112	204	95
Fulton	615	38	31	102	306	138
Genesee	459	30	66	55	287	21
Greene	261	75	23	62	92	9
Hamilton	4	2	0	1	1	0
Herkimer	749	157	26	91	395	80
Jefferson	2,464	495	71	152	1,429	317
Lewis	220	39	4	24	129	24
Livingston	751	23	62	31	494	141
Madison	333	18	19	44	224	28
Monroe	21,985	4,923	235	61	15,734	1,032
Montgomery	1,210	173	46	176	484	331
Nassau	6,050	1,744	764	279	2,027	1,236
Niagara	5,013	461	69	99	3,353	1,031
Oneida	5,541	748	338	133	3,569	753
Onondaga	8,962	2,501	311	601	4,462	1,087
Ontario	1,251	68	194	88	801	100
Orange	2,814	820	255	98	1,233	408
Orleans	427	26	7	62	238	94
Oswego	1,454	66	95	77	1,052	164
Otsego	832	73	41	94	617	7
Putnam	198	36	15	23	101	23
Rensselaer	2,290	329	106	319	1,129	407
Rockland	1,075	195	21	14	802	43
St. Lawrence	1,026	76	51	75	760	64
Saratoga	1,268	63	27	103	953	122
Schenectady	2,738	371	214	172	1,525	456
Schoharie	369	28	4	45	128	164
Schuyler	271	9	2	28	164	68
Seneca	484	51	124	58	238	13
Steuben	1,569	243	233	123	700	270
Suffolk	5,785	3,170	194	45	1,397	979
Sullivan	949	59	72	211	467	140
Tioga	249	19	20	2	204	4
Tompkins	1,239	203	80	2	874	80
Ulster	1,513	359	226	17	804	107
Warren	501	105	55	20	294	27
Washington	671	68	55	6	431	111
Wayne	724	55	101	39	446	83
Westchester	7,483	1,219	182	70	2,832	3,180
Wyoming	143	10	12	25	92	4
Yates	213	34	19	39	102	19

**Table 3: Application Denials and Reasons for Denial
Family Assistance Program
July 2022 - June 2023**

Local District	Total Denials	Financial Issues	Residence Issues	Compliance Issues		Other
				Employment	Other	
New York State	95,943	26,631	1,145	1,815	53,671	12,681
New York City	54,382	16,093	157	72	27,692	10,368
Rest of State	41,561	10,538	988	1,743	25,979	2,313
Albany	1,160	100	98	2	944	16
Allegany	177	36	5	35	100	1
Broome	1,379	331	29	2	736	281
Cattaraugus	249	43	6	17	179	4
Cayuga	143	10	3	16	110	4
Chautauqua	751	118	10	112	431	80
Chemung	735	34	5	18	549	129
Chenango	153	7	3	0	142	1
Clinton	252	6	0	0	109	137
Columbia	200	10	6	10	99	75
Cortland	128	14	2	9	101	2
Delaware	144	34	1	6	102	1
Dutchess	1,356	373	73	35	507	368
Erie	3,568	486	33	14	3,023	12
Essex	78	3	0	8	66	1
Franklin	192	15	6	51	99	21
Fulton	192	17	8	39	127	1
Genesee	161	10	5	15	127	4
Greene	98	26	5	32	32	3
Hamilton	2	1	0	1	0	0
Herkimer	211	74	5	13	109	10
Jefferson	780	249	12	62	453	4
Lewis	61	9	0	3	45	4
Livingston	257	7	13	14	205	18
Madison	136	8	4	26	97	1
Monroe	8,278	2,467	29	25	5,695	62
Montgomery	436	91	16	70	223	36
Nassau	1,738	789	143	137	535	134
Niagara	1,275	164	20	10	1,063	18
Oneida	1,644	366	36	7	1,141	94
Onondaga	3,057	1,216	44	166	1,492	139
Ontario	316	22	8	32	250	4
Orange	1,374	487	42	70	567	208
Orleans	123	18	2	17	79	7
Oswego	671	30	25	45	533	38
Otsego	191	16	6	7	162	0
Putnam	64	16	0	9	39	0
Rensselaer	963	210	24	194	521	14
Rockland	476	94	2	6	366	8
St. Lawrence	461	27	10	24	391	9
Saratoga	342	7	2	15	308	10
Schenectady	1,085	242	33	102	685	23
Schoharie	73	7	1	13	40	12
Schuyler	79	4	0	8	54	13
Seneca	163	14	18	23	106	2
Steuben	439	102	21	44	246	26
Suffolk	1,720	1,219	33	3	420	45
Sullivan	335	21	13	92	161	48
Tioga	114	13	7	1	93	0
Tompkins	322	71	9	0	236	6
Ulster	548	167	42	12	298	29
Warren	181	53	6	8	105	9
Washington	266	23	5	4	215	19
Wayne	248	27	8	15	188	10
Westchester	1,881	518	48	23	1,182	110
Wyoming	55	1	0	8	46	0
Yates	80	15	3	13	47	2

**Table 4: Application Denials and Reasons for Denial
Safety Net Assistance Program
July 2022 - June 2023**

Local District	Total Denials	Financial Issues	Residence Issues	Compliance Issues		Other
				Employment	Other	
New York State	243,309	38,456	5,940	3,328	135,048	60,537
New York City	159,166	26,145	755	176	88,190	43,900
Rest of State	84,143	12,311	5,185	3,152	46,858	16,637
Albany	3,053	197	408	47	1,867	534
Allegany	404	52	11	59	229	53
Broome	3,181	407	166	32	1,552	1,024
Cattaraugus	821	53	123	24	507	114
Cayuga	564	23	68	34	356	83
Chautauqua	2,820	178	66	197	1,347	1,032
Chemung	1,595	53	35	50	1,155	302
Chenango	401	15	22	0	362	2
Clinton	691	13	21	3	341	313
Columbia	380	20	91	9	106	154
Cortland	542	30	23	38	442	9
Delaware	208	20	7	8	118	55
Dutchess	2,133	541	186	38	797	571
Erie	5,646	424	163	172	4,775	112
Essex	163	3	7	22	111	20
Franklin	284	18	26	61	105	74
Fulton	423	21	23	63	179	137
Genesee	298	20	61	40	160	17
Greene	163	49	18	30	60	6
Hamilton	2	1	0	0	1	0
Herkimer	538	83	21	78	286	70
Jefferson	1,684	246	59	90	976	313
Lewis	159	30	4	21	84	20
Livingston	494	16	49	17	289	123
Madison	197	10	15	18	127	27
Monroe	13,707	2,456	206	36	10,039	970
Montgomery	774	82	30	106	261	295
Nassau	4,312	955	621	142	1,492	1,102
Niagara	3,738	297	49	89	2,290	1,013
Oneida	3,897	382	302	126	2,428	659
Onondaga	5,905	1,285	267	435	2,970	948
Ontario	935	46	186	56	551	96
Orange	1,440	333	213	28	666	200
Orleans	304	8	5	45	159	87
Oswego	783	36	70	32	519	126
Otsego	641	57	35	87	455	7
Putnam	134	20	15	14	62	23
Rensselaer	1,327	119	82	125	608	393
Rockland	599	101	19	8	436	35
St. Lawrence	565	49	41	51	369	55
Saratoga	926	56	25	88	645	112
Schenectady	1,653	129	181	70	840	433
Schoharie	296	21	3	32	88	152
Schuyler	192	5	2	20	110	55
Seneca	321	37	106	35	132	11
Steuben	1,130	141	212	79	454	244
Suffolk	4,065	1,951	161	42	977	934
Sullivan	614	38	59	119	306	92
Tioga	135	6	13	1	111	4
Tompkins	917	132	71	2	638	74
Ulster	965	192	184	5	506	78
Warren	320	52	49	12	189	18
Washington	405	45	50	2	216	92
Wayne	476	28	93	24	258	73
Westchester	5,602	701	134	47	1,650	3,070
Wyoming	88	9	12	17	46	4
Yates	133	19	16	26	55	17

This page intentionally left blank

Section (b)

Case Closings and Transfers

- Case closings by reason for closing
- Cases transferred between programs

**Table 5: Case Closings by Reason
Total Public Assistance
July 2022 - June 2023**

Local District	Total Closings	Client Request	Financial Issues	Residence Issues	Compliance Issues		Other
					Employment	Other	
New York State	240,992	8,428	41,663	12,568	3,997	138,315	36,021
New York City	158,337	3,343	27,270	3,237	190	90,937	33,360
Rest of State	82,655	5,085	14,393	9,331	3,807	47,378	2,661
Albany	2,240	117	367	417	32	1,255	52
Allegany	257	21	59	23	8	143	3
Broome	4,089	227	495	504	84	2,680	99
Cattaraugus	1,190	74	166	97	70	723	60
Cayuga	760	89	172	99	86	290	24
Chautauqua	2,036	105	365	202	119	1,200	45
Chemung	1,469	72	131	91	44	838	293
Chenango	291	24	62	28	3	161	13
Clinton	1,119	85	178	57	33	647	119
Columbia	365	45	87	64	5	151	13
Cortland	401	40	124	53	11	160	13
Delaware	153	13	46	13	3	74	4
Dutchess	1,345	72	225	200	67	728	53
Erie	8,706	922	1,891	660	529	4,434	270
Essex	91	4	17	11	12	46	1
Franklin	535	45	112	72	110	176	20
Fulton	418	51	64	38	50	207	8
Genesee	301	17	58	29	19	174	4
Greene	352	27	80	48	53	139	5
Hamilton	3	0	2	0	0	0	1
Herkimer	525	55	80	57	58	257	18
Jefferson	1,161	77	154	86	113	697	34
Lewis	67	9	14	2	1	34	7
Livingston	439	25	86	85	24	192	27
Madison	194	22	46	22	3	98	3
Monroe	7,018	184	1,525	261	4	4,882	162
Montgomery	269	12	70	33	16	131	7
Nassau	3,522	247	607	999	165	1,379	125
Niagara	2,238	125	373	95	66	1,521	58
Oneida	1,885	76	354	322	71	1,007	55
Onondaga	5,829	196	1,360	458	474	3,174	167
Ontario	1,200	97	243	202	102	517	39
Orange	1,736	79	270	373	69	918	27
Orleans	564	37	132	52	63	246	34
Oswego	1,656	122	221	132	75	991	115
Otsego	203	16	38	15	7	114	13
Putnam	88	9	19	12	4	42	2
Rensselaer	1,152	29	185	159	95	655	29
Rockland	840	54	153	53	53	518	9
St. Lawrence	1,025	85	110	87	96	621	26
Saratoga	269	66	50	22	10	116	5
Schenectady	1,961	51	333	255	148	1,102	72
Schoharie	132	33	27	16	5	45	6
Schuyler	107	18	15	10	9	49	6
Seneca	283	23	82	71	12	86	9
Steuben	1,019	115	155	202	106	418	23
Suffolk	11,644	636	1,263	1,111	323	8,049	262
Sullivan	619	30	82	106	113	268	20
Tioga	241	28	36	36	3	126	12
Tompkins	881	32	192	36	10	595	16
Ulster	1,116	60	139	344	10	504	59
Warren	490	39	106	44	31	265	5
Washington	363	29	76	63	4	176	15
Wayne	459	52	87	39	14	253	14
Westchester	4,990	218	909	726	53	3,013	71
Wyoming	143	25	40	20	10	44	4
Yates	206	24	60	19	49	49	5

**Table 6: Case Closings by Reason
Family Assistance Program
July 2022 - June 2023**

Local District	Total Closings	Client Request	Financial Issues	Residence Issues	Compliance Issues		Other
					Employment	Other	
New York State	51,509	3,207	10,658	2,310	706	33,021	1,607
New York City	28,136	1,229	6,435	397	35	19,120	920
Rest of State	23,373	1,978	4,223	1,913	671	13,901	687
Albany	719	49	119	105	3	423	20
Allegany	94	9	19	9	2	54	1
Broome	935	88	129	66	13	621	18
Cattaraugus	272	28	50	19	9	151	15
Cayuga	166	43	33	20	12	55	3
Chautauqua	604	54	125	49	23	339	14
Chemung	425	27	31	25	6	236	100
Chenango	100	10	18	15	1	50	6
Clinton	276	34	36	11	4	165	26
Columbia	87	11	17	6	3	48	2
Cortland	100	17	35	10	0	32	6
Delaware	69	7	21	5	0	35	1
Dutchess	391	31	69	31	20	234	6
Erie	2,820	206	677	186	75	1,620	56
Essex	22	2	3	2	3	12	0
Franklin	109	13	16	11	15	53	1
Fulton	128	26	17	9	9	64	3
Genesee	73	9	15	4	2	42	1
Greene	94	12	20	12	11	37	2
Hamilton	1	0	1	0	0	0	0
Herkimer	124	21	20	13	8	61	1
Jefferson	253	36	40	22	13	136	6
Lewis	23	3	5	1	0	13	1
Livingston	104	9	25	17	7	44	2
Madison	68	9	12	5	0	40	2
Monroe	2,277	95	458	65	1	1,612	46
Montgomery	94	5	25	12	2	50	0
Nassau	699	116	126	106	33	292	26
Niagara	605	52	101	31	9	394	18
Oneida	617	36	113	80	21	349	18
Onondaga	1,928	71	495	126	74	1,113	49
Ontario	277	34	62	30	14	136	1
Orange	524	32	95	66	19	304	8
Orleans	136	12	38	21	10	48	7
Oswego	526	58	71	26	18	325	28
Otsego	62	6	11	4	3	35	3
Putnam	16	3	3	2	0	7	1
Rensselaer	681	14	96	82	68	404	17
Rockland	249	23	54	20	6	146	0
St. Lawrence	287	36	29	23	13	182	4
Saratoga	73	29	5	11	1	26	1
Schenectady	621	27	99	71	27	369	28
Schoharie	56	24	7	5	0	19	1
Schuyler	38	11	2	4	1	18	2
Seneca	85	10	27	21	2	24	1
Steuben	229	50	30	31	10	103	5
Suffolk	2,681	246	249	153	60	1,902	71
Sullivan	176	15	22	16	14	104	5
Tioga	84	14	8	8	3	48	3
Tompkins	167	13	27	8	1	113	5
Ulster	259	22	32	64	1	118	22
Warren	136	18	23	9	5	80	1
Washington	142	17	24	21	0	75	5
Wayne	125	24	19	13	4	65	0
Westchester	1,378	90	298	121	5	850	14
Wyoming	34	16	5	5	0	8	0
Yates	54	5	16	5	7	17	4

**Table 7: Case Closings by Reason
Safety Net Assistance Program
July 2022 - June 2023**

Local District	Total Closings	Client Request	Financial Issues	Residence Issues	Compliance Issues		Other
					Employment	Other	
New York State	189,483	5,221	31,005	10,258	3,291	105,294	34,414
New York City	130,201	2,114	20,835	2,840	155	71,817	32,440
Rest of State	59,282	3,107	10,170	7,418	3,136	33,477	1,974
Albany	1,521	68	248	312	29	832	32
Allegany	163	12	40	14	6	89	2
Broome	3,154	139	366	438	71	2,059	81
Cattaraugus	918	46	116	78	61	572	45
Cayuga	594	46	139	79	74	235	21
Chautauqua	1,432	51	240	153	96	861	31
Chemung	1,044	45	100	66	38	602	193
Chenango	191	14	44	13	2	111	7
Clinton	843	51	142	46	29	482	93
Columbia	278	34	70	58	2	103	11
Cortland	301	23	89	43	11	128	7
Delaware	84	6	25	8	3	39	3
Dutchess	954	41	156	169	47	494	47
Erie	5,886	716	1,214	474	454	2,814	214
Essex	69	2	14	9	9	34	1
Franklin	426	32	96	61	95	123	19
Fulton	290	25	47	29	41	143	5
Genesee	228	8	43	25	17	132	3
Greene	258	15	60	36	42	102	3
Hamilton	2	0	1	0	0	0	1
Herkimer	401	34	60	44	50	196	17
Jefferson	908	41	114	64	100	561	28
Lewis	44	6	9	1	1	21	6
Livingston	335	16	61	68	17	148	25
Madison	126	13	34	17	3	58	1
Monroe	4,741	89	1,067	196	3	3,270	116
Montgomery	175	7	45	21	14	81	7
Nassau	2,823	131	481	893	132	1,087	99
Niagara	1,633	73	272	64	57	1,127	40
Oneida	1,268	40	241	242	50	658	37
Onondaga	3,901	125	865	332	400	2,061	118
Ontario	923	63	181	172	88	381	38
Orange	1,212	47	175	307	50	614	19
Orleans	428	25	94	31	53	198	27
Oswego	1,130	64	150	106	57	666	87
Otsego	141	10	27	11	4	79	10
Putnam	72	6	16	10	4	35	1
Rensselaer	471	15	89	77	27	251	12
Rockland	591	31	99	33	47	372	9
St. Lawrence	738	49	81	64	83	439	22
Saratoga	196	37	45	11	9	90	4
Schenectady	1,340	24	234	184	121	733	44
Schoharie	76	9	20	11	5	26	5
Schuyler	69	7	13	6	8	31	4
Seneca	198	13	55	50	10	62	8
Steuben	790	65	125	171	96	315	18
Suffolk	8,963	390	1,014	958	263	6,147	191
Sullivan	443	15	60	90	99	164	15
Tioga	157	14	28	28	0	78	9
Tompkins	714	19	165	28	9	482	11
Ulster	857	38	107	280	9	386	37
Warren	354	21	83	35	26	185	4
Washington	221	12	52	42	4	101	10
Wayne	334	28	68	26	10	188	14
Westchester	3,612	128	611	605	48	2,163	57
Wyoming	109	9	35	15	10	36	4
Yates	152	19	44	14	42	32	1

**Table 8: Cases Transferred between
Public Assistance Programs
July 2022 - June 2023**

Cases Transferred from Family Assistance to Safety Net Assistance		Cases Transferred from Safety Net Assistance to Family Assistance	
New York State	15,995	New York State	4,176
New York City	12,488	New York City	2,509
Rest of State	3,507	Rest of State	1,667
Albany	105	Albany	36
Allegany	9	Allegany	12
Broome	138	Broome	86
Cattaraugus	33	Cattaraugus	20
Cayuga	37	Cayuga	21
Chautauqua	131	Chautauqua	74
Chemung	25	Chemung	11
Chenango	12	Chenango	4
Clinton	47	Clinton	26
Columbia	22	Columbia	9
Cortland	10	Cortland	12
Delaware	3	Delaware	1
Dutchess	51	Dutchess	24
Erie	402	Erie	197
Essex	4	Essex	1
Franklin	29	Franklin	13
Fulton	14	Fulton	4
Genesee	17	Genesee	8
Greene	23	Greene	2
Hamilton	0	Hamilton	0
Herkimer	28	Herkimer	17
Jefferson	37	Jefferson	20
Lewis	4	Lewis	2
Livingston	15	Livingston	11
Madison	11	Madison	7
Monroe	348	Monroe	199
Montgomery	31	Montgomery	7
Nassau	151	Nassau	36
Niagara	70	Niagara	32
Oneida	116	Oneida	62
Onondaga	219	Onondaga	138
Ontario	45	Ontario	12
Orange	97	Orange	35
Orleans	27	Orleans	18
Oswego	96	Oswego	51
Otsego	4	Otsego	3
Putnam	3	Putnam	1
Rensselaer	61	Rensselaer	25
Rockland	33	Rockland	9
St. Lawrence	47	St. Lawrence	20
Saratoga	5	Saratoga	0
Schenectady	80	Schenectady	17
Schoharie	5	Schoharie	3
Schuyler	5	Schuyler	3
Seneca	13	Seneca	1
Steuben	27	Steuben	14
Suffolk	341	Suffolk	117
Sullivan	25	Sullivan	9
Tioga	6	Tioga	5
Tompkins	22	Tompkins	26
Ulster	46	Ulster	20
Warren	6	Warren	2
Washington	16	Washington	10
Wayne	11	Wayne	8
Westchester	327	Westchester	154
Wyoming	8	Wyoming	7
Yates	9	Yates	5

This page intentionally left blank

Section (c)

Subsidized Work Activities

- Number of recipients participating in subsidized work activities by type of activity
- Average weekly hours in subsidized work activities
- Number of recipients receiving an exemption from participating in work activities
- Months in work limited status
- Number of children receiving subsidized child care
- Expenditures in support of work activities
- Number of requests for administrative hearings – see Section (f) Sanctions

**Table 9: Monthly Average Number of Recipients
Participating in Subsidized Work Activities by Type of Activity and Average Weekly Hours in all Activities ¹
Temporary Assistance for Needy Families
July 2022 - June 2023**

Local District	Subsidized Private Sector Employment	Subsidized Public Sector Employment	On the Job Training	Work Experience	Job Search	Job Readiness Training	Community Service	Child Care Provider for Community Service Participant	Substance Use Disorder Treatment	Other Treatment	Average Weekly Hours
New York State	8	0	0	203	65	-	0	0	-	-	12
New York City	8	0	0	0	0	-	0	0	-	-	40
Rest of State	17	2	<1	193	192	46	10	0	195	363	9
Albany	0	0	<1	0	11	0	0	0	1	1	2
Allegany	0	0	0	1	3	<1	0	0	1	9	3
Broome	0	0	0	2	5	1	0	0	<1	<1	9
Cattaraugus	0	0	<1	1	<1	<1	<1	0	3	0	4
Cayuga	0	0	0	3	2	0	0	0	9	5	4
Chautauqua	0	0	0	10	17	1	0	0	6	18	10
Chemung	0	0	0	0	1	2	0	0	3	0	5
Chenango	0	0	0	0	0	0	0	0	1	0	<1
Clinton	0	0	0	<1	2	0	0	0	4	13	10
Columbia	0	0	0	0	1	<1	0	0	1	0	8
Cortland	0	0	0	1	4	1	0	0	2	0	7
Delaware	0	0	0	0	0	<1	0	0	<1	0	4
Dutchess	0	0	0	0	2	0	0	0	8	10	9
Erie	17	<1	0	126	0	0	0	0	0	1	15
Essex	0	0	0	0	1	0	0	0	<1	3	1
Franklin	0	0	0	2	0	0	0	0	0	1	15
Fulton	0	0	0	0	1	0	0	0	1	5	2
Genesee	0	0	0	0	0	0	0	0	1	3	1
Greene	0	0	0	<1	4	<1	0	0	2	0	9
Hamilton	0	0	0	0	0	0	0	0	0	0	0
Herkimer	0	0	0	1	0	1	0	0	1	17	4
Jefferson	0	0	0	3	3	0	0	0	8	26	6
Lewis	0	0	0	<1	1	1	0	0	1	3	3
Livingston	0	0	0	2	1	<1	0	0	<1	3	5
Madison	0	0	0	0	1	0	0	0	3	8	2
Monroe	0	0	0	0	12	4	0	0	50	45	3
Montgomery	0	0	0	0	2	0	0	0	<1	1	1
Nassau	0	0	0	9	4	1	1	0	<1	0	13
Niagara	0	0	0	2	<1	<1	0	0	6	0	8
Oneida	0	0	0	<1	3	3	0	0	<1	0	3
Onondaga	0	0	<1	<1	1	1	<1	0	11	83	3
Ontario	0	0	0	<1	11	0	0	0	1	4	3
Orange	0	<1	0	1	<1	5	0	0	7	<1	10
Orleans	0	0	0	1	0	<1	0	0	<1	<1	10
Oswego	0	1	0	<1	12	7	0	0	21	0	3
Otsego	0	0	0	<1	2	0	0	0	<1	1	3
Putnam	0	0	0	0	1	0	0	0	1	2	6
Rensselaer	0	0	0	<1	13	<1	0	0	2	0	5
Rockland	0	0	0	0	2	0	0	0	6	3	6
St. Lawrence	0	0	0	6	5	3	<1	0	4	5	8
Saratoga	0	0	0	0	0	0	0	0	2	2	1
Schenectady	0	0	0	0	4	1	<1	0	0	0	8
Schoharie	0	0	0	0	1	0	0	0	1	3	2
Schuyler	0	0	0	0	1	0	0	0	<1	2	1
Seneca	0	0	0	0	0	0	1	0	1	5	1
Steuben	0	0	0	2	3	<1	<1	0	<1	<1	7
Suffolk	0	1	0	19	<1	0	5	0	8	0	16
Sullivan	<1	0	0	1	3	1	1	0	1	1	7
Tioga	0	0	0	<1	<1	0	0	0	1	1	1
Tompkins	0	0	0	0	0	0	0	0	0	0	0
Ulster	0	0	0	0	0	0	0	0	1	0	<1
Warren	0	0	0	0	<1	0	1	0	1	2	19
Washington	0	0	0	0	0	0	0	0	3	5	8
Wayne	0	0	0	0	1	<1	0	0	5	16	2
Westchester	0	0	0	0	60	0	0	0	9	56	3
Wyoming	0	0	0	0	1	1	0	0	1	3	6
Yates	0	0	0	0	1	1	<1	0	0	<1	3

**Table 10: Monthly Average Number of Recipients
Participating in Subsidized Work Activities by Type of Activity and Average Weekly Hours in all Activities ¹
Safety Net MOE
July 2022 - June 2023**

Local District	Subsidized Private Sector Employment	Subsidized Public Sector Employment	On the Job Training	Work Experience	Job Search	Job Readiness Training	Community Service	Child Care Provider for Community Service Participant	Substance Use Disorder Treatment	Other Treatment	Average Weekly Hours
New York State	29	183	0	157	34	-	4	0	-	-	24
New York City	14	183	-	0	0	-	0	0	-	-	38
Rest of State	7	<1	0	138	130	29	9	0	104	169	10
Albany	0	0	0	0	0	12	0	0	1	1	2
Allegany	0	0	0	1	1	<1	0	0	1	1	6
Broome	0	0	0	2	2	<1	0	0	0	0	9
Cattaraugus	0	0	0	0	0	0	<1	0	<1	0	<1
Cayuga	0	0	0	2	1	0	0	0	1	<1	11
Chautauqua	0	0	0	6	4	<1	0	0	3	3	13
Chemung	0	0	0	0	1	1	0	0	1	0	5
Chenango	0	0	0	0	0	0	0	0	<1	0	0
Clinton	0	0	0	0	1	0	0	0	1	2	6
Columbia	0	0	0	0	1	<1	0	0	1	0	8
Cortland	0	0	0	0	<1	<1	0	0	<1	0	1
Delaware	0	0	0	0	0	0	0	0	0	0	0
Dutchess	0	0	0	0	<1	0	0	0	<1	5	3
Erie	7	<1	0	80	0	0	0	0	0	<1	14
Essex	0	0	0	0	0	0	0	0	0	0	0
Franklin	0	0	0	1	0	0	0	0	0	1	14
Fulton	0	0	0	0	0	0	0	0	0	1	0
Genesee	0	0	0	0	1	0	0	0	1	2	1
Greene	0	0	0	0	1	<1	0	0	1	<1	6
Hamilton	0	0	0	0	0	0	0	0	0	0	0
Herkimer	0	0	0	1	0	<1	0	0	2	3	8
Jefferson	0	0	0	1	1	0	0	0	3	6	7
Lewis	0	0	0	0	0	<1	0	0	<1	<1	0
Livingston	0	0	0	<1	0	0	0	0	0	1	2
Madison	0	0	0	0	0	0	0	0	0	4	0
Monroe	0	0	0	0	9	3	0	0	49	15	3
Montgomery	0	0	0	<1	1	0	0	0	0	0	2
Nassau	0	0	0	12	3	<1	2	0	<1	0	17
Niagara	0	0	0	4	0	0	0	0	2	0	15
Oneida	0	0	0	1	2	1	0	0	0	0	6
Onondaga	0	0	0	<1	<1	1	0	0	6	55	2
Ontario	0	0	0	0	4	0	0	0	1	1	3
Orange	0	0	0	<1	0	3	0	0	5	0	10
Orleans	0	0	0	<1	0	0	0	0	0	0	1
Oswego	0	0	0	<1	5	2	0	0	6	0	1
Otsego	0	0	0	0	<1	0	0	0	0	<1	1
Putnam	0	0	0	0	<1	0	0	0	0	1	1
Rensselaer	0	0	0	1	10	0	0	0	0	<1	4
Rockland	0	0	0	1	<1	0	0	0	2	<1	8
St. Lawrence	0	0	0	6	2	2	0	0	1	3	11
Saratoga	0	0	0	0	0	0	0	0	0	0	0
Schenectady	0	0	0	<1	3	1	<1	0	0	<1	5
Schoharie	0	0	0	0	<1	0	0	0	0	1	<1
Schuyler	0	0	0	0	<1	<1	0	0	0	2	0
Seneca	0	0	0	0	0	0	<1	0	2	<1	2
Steuben	0	0	0	0	<1	0	<1	0	<1	0	1
Suffolk	0	<1	0	16	0	0	6	0	4	0	18
Sullivan	0	0	0	1	1	<1	<1	0	0	2	10
Tioga	0	0	0	<1	<1	0	0	0	1	1	1
Tompkins	0	0	0	0	0	0	0	0	0	0	0
Ulster	0	0	0	0	0	0	0	0	0	0	0
Warren	0	0	0	0	0	0	0	0	0	0	0
Washington	0	0	0	0	0	0	0	0	0	1	<1
Wayne	0	0	0	0	<1	0	0	0	2	5	2
Westchester	0	0	0	0	76	<1	0	0	8	51	3
Wyoming	0	0	0	0	0	0	0	0	1	1	<1
Yates	0	0	0	0	0	1	<1	0	0	<1	0

**Table 11: Monthly Average Number of Recipients
Participating in Subsidized Work Activities by Type of Activity and Average Weekly Hours in all Activities ¹
Safety Net Non-MOE
July 2022 - June 2023**

Local District	Subsidized Private Sector Employment	Subsidized Public Sector Employment	On the Job Training	Work Experience	Job Search	Job Readiness Training	Community Service	Child Care Provider for Community Service Participant	Substance Use Disorder Treatment	Other Treatment	Average Weekly Hours
New York State	46	758	1	1,820	34,130	429	773	1	4,311	28,168	13
New York City	45	600	-	148	33,382	-	538	-	2,282	27,028	-
Rest of State	<1	158	<1	1,672	748	429	235	<1	2,029	1,140	13
Albany	0	0	0	3	0	51	4	0	35	4	9
Allegany	0	0	0	9	9	4	2	0	20	34	7
Broome	0	0	<1	41	34	3	14	0	1	<1	20
Cattaraugus	<1	0	<1	21	6	1	2	0	22	0	10
Cayuga	0	0	0	48	8	0	4	0	42	12	7
Chautauqua	0	0	0	48	16	3	12	0	77	27	21
Chemung	0	0	0	4	8	8	1	0	27	0	9
Chenango	0	0	0	3	0	0	1	0	10	0	13
Clinton	0	0	0	16	20	11	0	0	35	38	18
Columbia	0	0	0	4	6	0	3	0	13	0	22
Cortland	0	0	0	6	7	3	0	0	14	0	7
Delaware	0	0	0	3	1	2	0	0	2	0	15
Dutchess	0	0	0	7	2	0	2	0	68	48	35
Erie	0	0	0	355	0	0	40	0	11	0	19
Essex	0	0	0	3	1	0	0	0	5	9	8
Franklin	0	0	0	16	0	0	2	0	4	7	10
Fulton	0	0	0	2	1	0	2	0	11	16	7
Genesee	0	0	0	1	2	1	<1	0	40	29	6
Greene	0	0	0	7	8	1	<1	0	17	1	25
Hamilton	0	0	0	0	0	0	0	0	0	0	0
Herkimer	0	0	0	9	0	5	1	0	22	53	4
Jefferson	0	0	0	49	12	0	4	0	39	78	5
Lewis	0	0	0	1	1	1	0	0	6	11	2
Livingston	0	0	0	13	2	<1	<1	0	2	21	5
Madison	0	0	0	2	2	<1	0	0	8	26	5
Monroe	0	0	0	0	34	38	15	0	506	86	4
Montgomery	0	0	0	6	3	0	<1	0	6	3	5
Nassau	0	155	0	102	113	5	10	0	35	1	11
Niagara	0	0	0	70	2	5	2	0	69	0	15
Oneida	0	0	0	27	17	6	16	0	1	0	25
Onondaga	0	0	0	2	1	<1	18	0	119	231	4
Ontario	0	0	0	24	34	1	3	0	23	32	5
Orange	0	0	0	8	16	16	2	0	97	1	68
Orleans	0	<1	<1	12	0	3	2	0	13	23	14
Oswego	0	1	0	7	47	15	4	0	66	0	7
Otsego	0	0	0	5	5	0	1	0	1	3	12
Putnam	0	0	0	2	4	0	0	0	5	9	12
Rensselaer	0	0	0	2	6	0	2	0	7	4	12
Rockland	0	0	0	23	2	1	1	0	61	7	23
St. Lawrence	0	0	0	33	41	216	4	0	23	25	7
Saratoga	0	0	0	1	1	0	2	0	20	24	8
Schenectady	0	0	0	20	8	13	4	0	0	<1	24
Schoharie	0	0	0	1	2	<1	0	0	4	10	14
Schuyler	0	0	0	3	3	1	<1	0	<1	15	4
Seneca	0	0	0	5	0	0	1	0	15	4	6
Steuben	0	0	0	36	17	7	7	0	10	4	11
Suffolk	0	2	0	566	135	0	19	0	188	<1	21
Sullivan	0	0	0	13	11	2	3	0	23	11	20
Tioga	0	0	0	2	3	0	2	<1	2	6	12
Tompkins	0	0	0	5	<1	0	2	0	1	0	40
Ulster	0	0	0	7	0	0	1	0	25	0	13
Warren	0	0	0	5	3	0	<1	0	9	7	8
Washington	0	0	0	2	<1	0	1	0	16	16	14
Wayne	0	<1	0	4	4	<1	1	0	47	32	6
Westchester	0	0	0	12	86	3	8	0	98	162	11
Wyoming	0	0	0	1	5	5	<1	0	7	9	9
Yates	0	0	0	2	1	<1	13	0	2	2	6

**Table 12: Monthly Average Number of Recipients Receiving an Exemption from Participating in Work Activities
Temporary Assistance for Needy Families
July 2022 - June 2023**

Local District	Nonexempt			Exempt			
	Total Nonexempt	Work Limited	All Others	Total Exempt	Illness/Disability	Substance Use Disorder	All Others
New York State	44,888	790	44,098	10,631	5,330	365	4,936
New York City	39,564	370	39,195	5,069	2,066	37	2,966
Rest of State	5,324	420	4,904	5,563	3,264	329	1,970
Albany	228	10	219	65	25	3	37
Allegany	16	2	14	35	26	0	9
Broome	128	11	117	156	97	12	47
Cattaraugus	61	4	57	92	37	18	37
Cayuga	55	3	52	82	51	13	18
Chautauqua	211	25	185	203	113	11	79
Chemung	47	8	39	50	34	3	14
Chenango	25	2	23	24	16	1	7
Clinton	34	3	31	85	40	7	38
Columbia	18	0	18	35	14	5	16
Cortland	20	1	19	45	33	6	7
Delaware	14	2	13	29	19	0	10
Dutchess	27	6	21	87	56	8	24
Erie	956	62	895	934	468	39	428
Essex	2	0	2	8	5	1	3
Franklin	28	1	27	45	32	0	13
Fulton	19	4	15	20	13	2	5
Genesee	8	1	8	26	21	1	4
Greene	9	1	9	13	8	1	4
Hamilton	0	0	0	1	1	0	0
Herkimer	15	1	14	53	32	3	18
Jefferson	31	4	27	80	56	8	16
Lewis	2	1	1	5	3	0	2
Livingston	23	4	20	40	26	2	12
Madison	4	1	3	31	18	7	5
Monroe	667	61	606	672	448	73	150
Montgomery	26	4	22	29	19	3	7
Nassau	243	11	232	92	47	3	43
Niagara	98	7	91	125	91	11	23
Oneida	157	6	151	312	226	6	80
Onondaga	390	39	351	454	314	2	139
Ontario	55	4	51	50	21	3	26
Orange	110	5	105	98	35	10	54
Orleans	27	1	26	61	46	2	14
Oswego	89	7	83	147	100	12	34
Otsego	11	0	10	11	5	1	5
Putnam	3	0	3	3	1	1	2
Rensselaer	142	6	137	89	43	3	43
Rockland	61	0	60	55	28	4	23
St. Lawrence	48	4	44	56	27	2	27
Saratoga	3	0	3	25	13	3	9
Schenectady	113	12	102	92	49	2	41
Schoharie	9	0	9	15	11	0	4
Schuyler	4	0	4	4	3	0	1
Seneca	16	2	14	27	19	1	7
Steuben	40	6	34	68	49	1	18
Suffolk	278	61	217	277	115	7	155
Sullivan	40	2	39	32	21	0	12
Tioga	3	0	3	14	9	1	5
Tompkins	46	4	42	38	22	4	13
Ulster	57	5	52	54	26	3	25
Warren	12	1	11	19	9	3	7
Washington	31	3	28	47	22	4	21
Wayne	9	2	7	42	29	7	6
Westchester	543	16	527	286	159	5	122
Wyoming	6	0	6	15	9	3	4
Yates	6	1	5	9	7	0	2

**Table 13: Monthly Average Number of Recipients Receiving an Exemption from Participating in Work Activities
Safety Net MOE
July 2022 - June 2023**

Local District	Nonexempt			Exempt			
	Total Nonexempt	Work Limited	All Others	Total Exempt	Illness/Disability	Substance Use Disorder	All Others
New York State	39,151	2,306	36,845	7,763	2,585	334	4,843
New York City	36,178	1,825	34,353	5,658	1,456	96	4,106
Rest of State	2,973	481	2,492	2,105	1,130	238	737
Albany	99	20	78	35	8	4	23
Allegany	5	2	4	6	4	1	0
Broome	82	14	69	77	44	8	25
Cattaraugus	12	2	10	14	8	1	4
Cayuga	18	5	13	15	11	2	2
Chautauqua	107	18	90	73	33	8	32
Chemung	6	1	5	12	6	1	4
Chenango	2	0	2	2	1	1	1
Clinton	5	1	5	9	3	3	3
Columbia	7	0	7	11	6	1	3
Cortland	5	0	5	7	5	1	2
Delaware	2	0	2	2	2	0	0
Dutchess	7	2	4	18	14	0	4
Erie	514	71	443	346	112	45	190
Essex	0	0	0	0	0	0	0
Franklin	12	1	11	4	2	0	2
Fulton	0	0	0	4	4	0	0
Genesee	4	2	3	10	7	1	2
Greene	3	1	2	5	4	1	1
Hamilton	0	0	0	0	0	0	0
Herkimer	9	2	7	8	5	1	2
Jefferson	21	4	17	23	16	2	5
Lewis	0	0	0	0	0	0	0
Livingston	6	1	5	11	6	2	3
Madison	2	1	1	11	10	0	1
Monroe	414	99	315	280	146	89	45
Montgomery	18	3	15	13	7	1	5
Nassau	192	18	173	79	54	3	22
Niagara	43	5	38	33	19	7	7
Oneida	117	12	105	77	55	3	20
Onondaga	218	40	177	232	167	1	64
Ontario	12	2	10	12	5	2	5
Orange	52	3	49	83	40	9	34
Orleans	8	0	8	10	6	2	1
Oswego	36	10	27	35	18	6	11
Otsego	1	0	1	2	2	0	0
Putnam	1	0	1	1	1	0	0
Rensselaer	95	5	90	25	15	0	11
Rockland	16	1	15	9	4	2	4
St. Lawrence	29	4	25	22	15	1	7
Saratoga	1	0	1	1	1	0	0
Schenectady	55	4	51	51	27	2	22
Schoharie	2	0	2	0	0	0	0
Schuyler	2	2	0	1	1	0	0
Seneca	3	0	3	11	8	3	0
Steuben	5	0	4	14	8	1	5
Suffolk	218	71	147	149	67	5	76
Sullivan	10	0	10	17	10	0	7
Tioga	0	0	0	5	2	1	3
Tompkins	15	5	10	10	7	1	2
Ulster	41	7	34	21	14	2	5
Warren	0	0	0	1	1	0	0
Washington	3	2	2	5	4	0	1
Wayne	2	1	2	9	6	2	0
Westchester	433	40	393	189	105	11	73
Wyoming	0	0	0	4	2	1	0
Yates	1	0	1	3	3	0	0

**Table 14: Monthly Average Number of Recipients Receiving an Exemption from Participating in Work Activities
Safety Net Non-MOE
July 2022 - June 2023**

Local District	Nonexempt			Exempt			
	Total Nonexempt	Work Limited	All Others	Total Exempt	Illness/Disability	Substance Use Disorder	All Others
New York State	115,260	4,665	110,595	94,004	33,868	6,137	54,000
New York City	105,390	2,854	102,536	74,180	24,059	2,269	47,852
Rest of State	9,870	1,811	8,059	19,824	9,809	3,868	6,148
Albany	360	51	309	319	74	70	175
Allegany	24	11	13	93	60	15	18
Broome	233	52	181	682	304	170	208
Cattaraugus	121	11	109	311	141	101	69
Cayuga	63	14	49	244	141	74	29
Chautauqua	310	93	216	491	268	92	132
Chemung	72	9	63	209	123	45	41
Chenango	41	5	36	89	54	15	20
Clinton	64	7	57	267	98	72	97
Columbia	27	0	27	100	50	22	28
Cortland	25	4	20	176	100	56	19
Delaware	12	2	10	54	34	3	18
Dutchess	22	11	10	296	171	81	44
Erie	1,540	261	1,280	2,700	1,268	595	837
Essex	4	1	3	22	14	6	3
Franklin	68	9	60	144	98	17	28
Fulton	24	3	22	91	55	18	18
Genesee	6	3	4	101	74	21	5
Greene	21	3	17	70	43	12	14
Hamilton	0	0	0	3	3	0	0
Herkimer	33	5	27	133	81	25	26
Jefferson	75	16	60	274	156	70	48
Lewis	3	1	2	24	13	3	8
Livingston	34	11	23	142	79	31	32
Madison	5	2	3	90	63	17	9
Monroe	1,290	261	1,028	2,131	947	707	477
Montgomery	29	7	22	83	45	20	17
Nassau	643	91	552	1,315	448	83	785
Niagara	147	33	114	454	262	125	67
Oneida	325	21	304	761	524	76	162
Onondaga	949	138	812	1,349	881	101	367
Ontario	111	13	98	226	121	44	61
Orange	172	24	149	405	175	102	128
Orleans	60	5	55	163	123	17	22
Oswego	169	30	139	313	202	62	49
Otsego	16	3	13	58	33	15	11
Putnam	9	2	7	13	9	2	2
Rensselaer	55	6	49	109	67	26	16
Rockland	130	7	123	215	85	50	81
St. Lawrence	123	16	107	205	115	27	64
Saratoga	11	2	9	111	64	26	21
Schenectady	141	32	109	342	171	81	91
Schoharie	7	1	6	41	32	3	6
Schuyler	13	5	8	36	29	3	5
Seneca	30	3	28	69	41	23	6
Steuben	91	28	63	241	169	18	54
Suffolk	815	320	494	1,705	620	196	889
Sullivan	53	1	52	137	81	23	33
Tioga	8	1	7	50	25	15	11
Tompkins	122	27	95	225	128	53	44
Ulster	106	24	82	232	116	55	61
Warren	18	6	13	70	35	20	14
Washington	59	9	51	103	60	21	22
Wayne	17	5	12	138	70	60	9
Westchester	944	101	843	1,284	492	164	628
Wyoming	10	2	9	78	48	19	11
Yates	12	3	8	41	29	4	9

Table 15: Consecutive Number of Months in Work Limited Status
Total Public Assistance
June 2023

Local District	Total Work Limited Recipients	0-3 Months	4-6 Months	7-12 Months	> 1 Year
New York State	7,043	1,354	1,408	1,571	2,710
New York City	4,331	601	725	938	2,067
Rest of State	2,712	753	683	633	643
Albany	83	20	16	23	24
Allegany	8	0	4	2	2
Broome	76	24	16	24	12
Cattaraugus	14	2	3	3	6
Cayuga	23	8	7	5	3
Chautauqua	122	27	29	36	30
Chemung	16	5	2	6	3
Chenango	9	3	1	4	1
Clinton	15	6	6	2	1
Columbia	0	0	0	0	0
Cortland	9	7	2	0	0
Delaware	4	2	2	0	0
Dutchess	26	10	6	6	4
Erie	396	99	107	85	105
Essex	1	1	0	0	0
Franklin	17	6	5	4	2
Fulton	5	2	2	1	0
Genesee	4	0	3	1	0
Greene	5	3	1	1	0
Hamilton	0	0	0	0	0
Herkimer	6	4	1	0	1
Jefferson	24	8	5	7	4
Lewis	2	2	0	0	0
Livingston	16	5	4	6	1
Madison	3	2	0	0	1
Monroe	404	101	88	91	124
Montgomery	18	9	5	3	1
Nassau	128	28	32	43	25
Niagara	46	17	12	10	7
Oneida	37	6	7	6	18
Onondaga	188	55	62	41	30
Ontario	17	8	8	0	1
Orange	32	12	4	12	4
Orleans	8	4	2	1	1
Oswego	48	16	11	14	7
Otsego	3	2	0	1	0
Putnam	1	1	0	0	0
Rensselaer	16	6	3	4	3
Rockland	5	2	0	1	2
St. Lawrence	23	8	5	0	10
Saratoga	1	0	0	1	0
Schenectady	43	15	10	4	14
Schoharie	1	1	0	0	0
Schuyler	7	1	3	1	2
Seneca	6	1	3	0	2
Steuben	32	8	5	9	10
Suffolk	493	142	145	94	112
Sullivan	4	2	2	0	0
Tioga	2	2	0	0	0
Tompkins	36	6	11	10	9
Ulster	34	7	5	12	10
Warren	5	1	1	1	2
Washington	11	4	4	3	0
Wayne	9	4	1	4	0
Westchester	165	35	30	51	49
Wyoming	4	3	1	0	0
Yates	1	0	1	0	0

**Table 16: Consecutive Number of Months in Work Limited Status by Case Category
June 2023**

Local District	TANF				Safety Net MOE				Safety Net Non-MOE			
	0-3	4-6	7-12	> 1 Year	0-3	4-6	7-12	> 1 Year	0-3	4-6	7-12	> 1 Year
New York State	185	153	182	195	326	400	458	901	843	855	931	1,614
New York City	46	44	76	112	219	295	348	769	336	386	514	1,186
Rest of State	139	109	106	83	107	105	110	132	507	469	417	428
Albany	1	3	3	3	6	2	6	6	13	11	14	15
Allegany	0	2	0	0	0	0	0	1	0	2	2	1
Broome	8	3	1	1	2	3	3	3	14	10	20	8
Cattaraugus	0	1	1	1	1	0	0	1	1	2	2	4
Cayuga	4	3	0	0	0	1	0	2	4	3	5	1
Chautauqua	5	4	6	7	3	5	2	3	19	20	28	20
Chemung	2	1	3	2	1	0	1	0	2	1	2	1
Chenango	1	0	2	0	0	0	0	0	2	1	2	1
Clinton	1	0	1	0	0	1	0	0	5	5	1	1
Columbia	0	0	0	0	0	0	0	0	0	0	0	0
Cortland	3	0	0	0	0	0	0	0	4	2	0	0
Delaware	0	0	0	0	0	0	0	0	2	2	0	0
Dutchess	2	0	2	2	2	2	2	0	6	4	2	2
Erie	19	23	15	15	19	17	12	16	61	67	58	74
Essex	0	0	0	0	0	0	0	0	1	0	0	0
Franklin	1	0	1	0	0	0	0	1	5	5	3	1
Fulton	0	1	1	0	0	0	0	0	2	1	0	0
Genesee	0	1	0	0	0	1	1	0	0	1	0	0
Greene	1	0	0	0	0	0	1	0	2	1	0	0
Hamilton	0	0	0	0	0	0	0	0	0	0	0	0
Herkimer	1	0	0	0	0	1	0	0	3	0	0	1
Jefferson	2	1	0	1	0	1	1	1	6	3	6	2
Lewis	0	0	0	0	0	0	0	0	2	0	0	0
Livingston	1	1	2	1	0	0	0	0	4	3	4	0
Madison	1	0	0	0	0	0	0	1	1	0	0	0
Monroe	13	9	17	13	20	17	19	32	68	62	55	79
Montgomery	1	2	1	0	1	1	1	1	7	2	1	0
Nassau	2	8	5	1	3	2	9	5	23	22	29	19
Niagara	4	1	2	1	1	1	2	1	12	10	6	5
Oneida	1	0	1	4	0	4	2	6	5	3	3	8
Onondaga	10	9	6	4	13	13	10	7	32	40	25	19
Ontario	2	2	0	0	1	0	0	0	5	6	0	1
Orange	2	2	1	1	0	0	2	0	10	2	9	3
Orleans	0	0	0	0	1	0	0	0	3	2	1	1
Oswego	4	3	1	0	3	5	2	2	9	3	11	5
Otsego	1	0	0	0	0	0	0	0	1	0	1	0
Putnam	0	0	0	0	0	0	0	0	1	0	0	0
Rensselaer	1	0	1	2	1	1	1	0	4	2	2	1
Rockland	0	0	0	0	0	0	0	1	2	0	1	1
St. Lawrence	3	1	0	1	0	1	0	3	5	3	0	6
Saratoga	0	0	0	0	0	0	0	0	0	0	1	0
Schenectady	6	3	2	3	0	1	0	1	9	6	2	10
Schoharie	0	0	0	0	0	0	0	0	1	0	0	0
Schuyler	0	0	0	0	1	0	0	0	0	3	1	2
Seneca	0	0	0	2	0	0	0	0	1	3	0	0
Steuben	0	0	3	0	0	0	0	0	8	5	6	10
Suffolk	23	18	18	14	15	12	12	24	104	115	64	74
Sullivan	1	0	0	0	0	0	0	0	1	2	0	0
Tioga	0	0	0	0	0	0	0	0	2	0	0	0
Tompkins	0	3	1	1	0	1	3	1	6	7	6	7
Ulster	1	0	3	0	1	0	3	2	5	5	6	8
Warren	0	1	0	0	0	0	0	0	1	0	1	2
Washington	1	0	0	0	0	1	0	0	3	3	3	0
Wayne	3	0	0	0	1	1	0	0	0	0	4	0
Westchester	6	2	6	3	11	10	15	11	18	18	30	35
Wyoming	1	0	0	0	0	0	0	0	2	1	0	0
Yates	0	1	0	0	0	0	0	0	0	0	0	0

**Table 17: Average Number of Children Receiving Subsidized Child Care
Funded under the NYS Child Care Block Grant²
July 2022 - June 2023**

Local District	Low Income	Public Assistance	Total Subsidized Child Care
New York State	61,845	20,924	82,769
New York City	27,766	19,541	47,307
Rest of State	34,079	1,383	35,462
Albany	832	23	855
Allegany	56	1	57
Broome	775	38	813
Cattaraugus	316	5	321
Cayuga	225	5	230
Chautauqua	530	32	562
Chemung	375	3	378
Chenango	85	4	89
Clinton	179	2	181
Columbia	57	6	63
Cortland	113	3	116
Delaware	127	0	127
Dutchess	626	5	631
Erie	3,357	242	3,599
Essex	43	2	45
Franklin	128	1	129
Fulton	48	0	48
Genesee	92	2	94
Greene	30	1	31
Hamilton	4	0	4
Herkimer	129	0	129
Jefferson	276	0	276
Lewis	39	0	39
Livingston	193	7	200
Madison	144	10	154
Monroe	5,165	187	5,352
Montgomery	183	2	185
Nassau	4,973	66	5,039
Niagara	383	10	393
Oneida	1,158	47	1,205
Onondaga	2,470	239	2,709
Ontario	301	5	306
Orange	627	69	696
Orleans	75	2	77
Oswego	289	1	290
Otsego	68	4	72
Putnam	25	8	33
Rensselaer	505	0	505
Rockland	658	20	678
St. Lawrence	167	14	181
Saratoga	324	0	324
Schenectady	904	42	946
Schoharie	46	4	50
Schuyler	59	3	62
Seneca	78	4	82
Steuben	518	1	519
Suffolk	2,502	148	2,650
Sullivan	123	10	133
Tioga	180	1	181
Tompkins	213	2	215
Ulster	313	7	320
Warren	109	0	109
Washington	71	0	71
Wayne	134	0	134
Westchester	2,582	92	2,674
Wyoming	58	1	59
Yates	39	2	41

**Table 18: Expenditures in Support of Work Activities
October 2021 through September 2022**

	Federal	State	Local	Total Expenditures
Family Assistance (TANF)	\$142,932,008	\$1,128,183	\$6,760,780	\$150,820,971
Federally Non-Participating	\$0	\$1,943,777	\$53,779,547	\$55,723,324
Supplemental Nutrition Assistance Program Employment and Training	\$58,549,511	\$4,287,433	\$48,533,484	\$111,370,428
Total Expenditures	\$201,481,519	\$7,359,393	\$109,073,811	\$317,914,723

Section (c) Subsidized Work Activities Footnotes

- 1 Figures for New York State and New York City for TANF and SNA MOE are based on sample data from the Federal TANF and SNA MOE quarterly disaggregated reports submitted to the US Department of Health and Human Services for the period of July 2022 to June 2023. This is the only source for New York City and thus statewide data on TANF and SNA MOE work participation. Data for all other districts is derived from the Welfare Reporting and Tracking System, which contains all necessary data for this purpose (there is insufficient sample size to develop work activity estimates for non-New York City districts from the federal samples). As a result, New York City and rest of state figures will not sum to the statewide total. Recipients may be participating in more than one activity. Subsidized Private Sector Employment for New York City includes Subsidized Public Sector Employment. For sample-based data the Job Readiness Training, Substance Use Disorder and Other Treatment activities are included in the Job Search category.

Figures for New York City SNA Non-MOE are derived from work participation reports provided by the New York City Human Resources Administration (HRA). The HRA reports do not include hours in activities. All other SNA Non-MOE data is derived from the Welfare Reporting and Tracking System.

Due to rounding in the calculation of averages, the total averages may not equal summation of the individual averages. Dashes signify that the cell is not part of the reporting data set for that activity and region.

SNA Non-MOE activity counts for Subsidized Private Sector Employment, Subsidized Public Sector Employment, On-the-Job Training, Work Experience, Job Search, Job Readiness Training, Community Service, Child Care Provider for Community Service Participant, Substance Use Disorder Treatment, and Other Treatment may include referred for enrollment, conciliation and referred for noncompliance/sanction counts.

- 2 Data sources. For rest of state counties, child care payments in the Welfare Reporting and Tracking System database are extracted retrospectively for each month. Low Income Day Care children are those with a case type of 20 (Medical Assistance), 22 (Medical Assistance - SSI), 24 (Medical Assistance - Family Health Plus), 31 (Non-PA Supplemental Nutrition Assistance Program), or 40 (Services) and Services Type Suffix R (Low Income Day Care). Public Assistance Day care children are those with a case type of 11 (Family Assistance), 12 (Safety Net FP Non-Cash), 16 (Safety Net FNP Cash), 17 (Safety Net FNP Non-Cash), 19 (Emergency Assistance to Families), 32 (SNAP - Mixed Households), or 40 (Services) and Services Type Suffix S (PA Day Care) or E (Emergency Assistance to Families). For New York City, a monthly data file of all cases with child care authorizations from the Administration for Children's Services (ACS) and the Human Resources Administration (HRA) is forwarded to OCFS. New York City case types are estimated using the designation ACS (low income) or HRA (PA) as provided by New York City. Numbers of children receiving subsidized child care includes subsidies funded under the NYS Child Care Block Grant as well as supplemental child care subsidy funding under the American Recovery and Reinvestment Act.

A monthly average of 349 additional child care subsidies were also distributed through several demonstration projects for students at CUNY and SUNY schools through NYS Department of Agriculture and Markets. These additional subsidies are not included in Table 17.

Section (d)

Unsubsidized Work Activities

- Number of recipients in unsubsidized employment
- Average weekly hours in unsubsidized employment
- Number of requests for administrative hearings – see Section (f)
Sanctions

Table 19: Monthly Average Number of Recipients Participating in Unsubsidized Employment and Average Weekly Hours¹
July 2022 - June 2023

Local District	Monthly Average Recipients			Average Weekly Hours		
	TANF	Safety Net MOE	Safety Net Non-MOE	TANF	Safety Net MOE	Safety Net Non-MOE
New York State	14,476	9,183	7,113	24	24	-
New York City	10,952	7,995	6,016	24	25	-
Rest of State	1,362	933	1,097	20	21	19
Albany	41	15	20	22	22	23
Allegany	5	3	4	12	10	12
Broome	30	22	43	18	17	16
Cattaraugus	16	3	9	19	12	15
Cayuga	17	9	11	16	18	14
Chautauqua	42	34	19	18	23	19
Chemung	7	2	5	15	12	20
Chenango	4	2	7	24	9	15
Clinton	14	2	16	18	23	23
Columbia	6	3	5	23	20	21
Cortland	8	2	8	20	16	22
Delaware	3	1	2	19	13	5
Dutchess	8	2	6	19	19	15
Erie	236	173	92	20	21	19
Essex	1	0	<1	4	0	2
Franklin	7	5	23	18	18	13
Fulton	2	0	3	21	0	19
Genesee	5	1	3	21	21	10
Greene	4	1	6	18	11	18
Hamilton	<1	0	0	<1	0	0
Herkimer	4	2	9	16	18	20
Jefferson	11	7	15	18	12	17
Lewis	1	<1	1	8	4	19
Livingston	8	1	6	17	23	22
Madison	2	<1	3	15	3	14
Monroe	161	127	105	19	20	17
Montgomery	4	8	5	10	19	12
Nassau	83	68	197	25	24	23
Niagara	22	9	15	18	19	12
Oneida	42	47	20	19	23	19
Onondaga	133	87	71	18	18	17
Ontario	16	5	21	16	20	21
Orange	35	26	33	22	22	18
Orleans	10	3	14	18	19	19
Oswego	27	11	19	18	26	19
Otsego	2	1	5	16	12	17
Putnam	<1	0	1	6	0	11
Rensselaer	32	32	1	18	19	15
Rockland	17	7	15	22	17	21
St. Lawrence	9	6	14	16	16	13
Saratoga	2	<1	1	14	1	16
Schenectady	20	14	16	16	19	20
Schoharie	2	1	3	15	5	12
Schuyler	2	1	3	11	5	8
Seneca	8	3	3	17	14	16
Steuben	11	3	16	15	26	18
Suffolk	88	93	93	22	24	22
Sullivan	12	4	14	24	26	26
Tioga	1	<1	1	8	3	14
Tompkins	6	4	8	19	19	17
Ulster	7	5	6	16	19	15
Warren	3	0	4	18	0	16
Washington	7	<1	6	20	8	13
Wayne	6	3	4	23	26	21
Westchester	115	75	61	23	21	21
Wyoming	3	<1	3	13	6	13
Yates	1	1	2	12	13	16

Section (d) Unsubsidized Work Activities Footnotes

1 Figures for New York State and New York City for TANF and SNA MOE are based on sample data from the Federal TANF and SNA MOE quarterly disaggregated reports submitted to the US Department of Health and Human Services for the period of July 2022 to June 2023. This is the only source for New York City and thus statewide data on TANF and SNA MOE work participation. Data for all other districts is derived from the Welfare Reporting and Tracking System, which contains all necessary data for this purpose (there is insufficient sample size to develop work activity estimates for non-New York City districts from the federal samples). As a result, New York City and rest of state figures will not sum to the statewide total. See footnote 1 in Section (c) for details. Due to rounding in the calculation of averages, the total averages may not equal summation of the individual averages. New York City does not report hours for Safety Net Non-MOE cases.

SNA Non-MOE activity counts for Unsubsidized Employment may include referred for employment, conciliation and referred for noncompliance/sanction counts.

This page intentionally left blank

Section (e)

Training and Educational Activities

- Number of recipients in training or educational activities by type of activity
- Average weekly hours in training or educational activities
- Expenditures – see Section (c) Subsidized Work Activities

**Table 20: Monthly Average Number of Recipients
Participating in Training and Education by Type of Activity and Average Weekly Hours in all Activities ¹
Temporary Assistance for Needy Families
July 2022 - June 2023**

Local District	Vocational Education	Job Skills Training	Educational Training	Secondary School or Equivalent	Teen Head of Household	Other Activities	Average Weekly Hours
New York State	292	116	30	0	-	-	20
New York City	233	0	0	0	-	-	23
Rest of State	25	85	110	11	1	10	10
Albany	0	3	<1	0	0	0	1
Allegany	0	<1	1	0	0	0	1
Broome	<1	0	8	4	0	<1	7
Cattaraugus	<1	1	0	0	0	0	3
Cayuga	1	0	1	0	0	0	11
Chautauqua	<1	<1	2	<1	0	0	5
Chemung	0	0	0	0	0	6	0
Chenango	0	0	0	0	0	0	0
Clinton	0	0	0	0	0	0	0
Columbia	0	0	0	0	0	<1	0
Cortland	0	0	0	0	0	0	0
Delaware	0	0	0	0	0	0	0
Dutchess	0	0	0	1	0	1	2
Erie	1	80	49	0	0	0	10
Essex	0	0	0	0	0	0	0
Franklin	0	0	1	0	0	1	3
Fulton	0	0	0	0	0	<1	0
Genesee	0	0	0	0	0	0	0
Greene	0	0	0	<1	0	0	1
Hamilton	0	0	0	0	0	0	0
Herkimer	0	0	<1	1	0	0	12
Jefferson	0	0	0	1	0	0	1
Lewis	0	0	0	0	0	0	0
Livingston	0	0	3	0	<1	0	8
Madison	0	0	0	0	0	0	0
Monroe	4	0	9	0	0	0	12
Montgomery	0	0	0	0	0	<1	0
Nassau	3	0	2	<1	0	1	17
Niagara	<1	0	1	<1	0	0	6
Oneida	<1	0	4	0	0	<1	10
Onondaga	3	1	22	0	<1	0	7
Ontario	<1	0	<1	0	0	<1	6
Orange	2	0	<1	<1	0	0	8
Orleans	0	1	<1	0	0	<1	2
Oswego	1	<1	1	0	<1	<1	9
Otsego	0	0	0	0	0	0	0
Putnam	0	0	0	0	0	0	0
Rensselaer	<1	0	<1	0	0	1	1
Rockland	1	0	0	1	0	0	10
St. Lawrence	1	0	0	0	0	0	7
Saratoga	0	0	<1	0	0	0	<1
Schenectady	1	0	1	<1	0	0	8
Schoharie	0	0	0	0	0	0	0
Schuyler	<1	0	0	0	0	0	1
Seneca	0	0	0	2	0	<1	9
Steuben	1	0	<1	0	0	0	5
Suffolk	5	0	1	<1	0	0	23
Sullivan	1	<1	0	1	0	0	9
Tioga	0	0	0	<1	0	0	9
Tompkins	0	0	1	0	0	0	3
Ulster	0	0	0	0	0	0	0
Warren	0	0	0	0	0	0	0
Washington	0	<1	0	0	0	0	1
Wayne	0	0	0	0	0	0	0
Westchester	<1	0	3	0	0	0	9
Wyoming	0	0	0	0	0	0	0
Yates	<1	0	0	0	0	<1	1

**Table 21: Monthly Average Number of Recipients
Participating in Training and Education by Type of Activity and Average Weekly Hours in all Activities ¹
Safety Net MOE
July 2022 - June 2023**

	Vocational Education	Job Skills Training	Educational Training	Secondary School or Equivalent	Teen Head of Household	Other Activities	Average Weekly Hours
Local District							
New York State	104	104	33	15	-	-	14
New York City	104	15	0	0	-	-	24
Rest of State	8	64	58	4	0	2	10
Albany	0	2	0	0	0	0	<1
Allegany	<1	1	1	<1	0	0	4
Broome	0	0	2	1	0	0	7
Cattaraugus	<1	0	0	0	0	<1	2
Cayuga	0	0	0	0	0	0	0
Chautauqua	0	0	3	<1	0	0	5
Chemung	0	0	0	0	0	1	0
Chenango	0	0	0	0	0	0	0
Clinton	0	0	0	0	0	0	0
Columbia	0	0	0	0	0	<1	0
Cortland	0	0	0	0	0	0	0
Delaware	0	0	0	0	0	0	0
Dutchess	0	0	0	<1	0	0	<1
Erie	<1	60	29	0	0	0	10
Essex	0	0	0	0	0	0	0
Franklin	0	0	<1	0	0	<1	1
Fulton	0	0	0	0	0	0	0
Genesee	0	0	0	0	0	0	0
Greene	0	0	0	0	0	0	0
Hamilton	0	0	0	0	0	0	0
Herkimer	0	0	0	0	0	0	0
Jefferson	0	0	0	1	0	0	3
Lewis	0	0	0	0	0	0	0
Livingston	0	0	0	0	0	0	0
Madison	0	0	0	0	0	0	0
Monroe	2	0	6	0	0	0	9
Montgomery	0	0	<1	0	0	0	1
Nassau	1	0	2	0	0	0	16
Niagara	0	0	<1	0	0	0	1
Oneida	<1	0	4	0	0	0	8
Onondaga	1	1	6	0	0	0	7
Ontario	0	0	0	0	0	0	0
Orange	0	0	<1	0	0	0	3
Orleans	0	0	0	0	0	0	0
Oswego	0	0	1	0	0	0	2
Otsego	0	0	0	0	0	0	0
Putnam	0	0	0	0	0	0	0
Rensselaer	0	0	0	<1	0	<1	3
Rockland	0	0	0	0	0	0	0
St. Lawrence	0	0	0	0	0	0	0
Saratoga	0	0	0	0	0	0	0
Schenectady	<1	<1	<1	0	0	<1	2
Schoharie	0	0	0	0	0	0	0
Schuyler	0	0	0	0	0	0	0
Seneca	0	0	0	<1	0	0	<1
Steuben	0	0	0	0	0	0	0
Suffolk	1	1	1	0	0	0	19
Sullivan	0	0	<1	0	0	0	<1
Tioga	0	0	0	0	0	0	0
Tompkins	0	<1	0	0	0	0	2
Ulster	0	0	0	0	0	0	0
Warren	0	0	0	0	0	0	0
Washington	0	0	0	0	0	0	0
Wayne	0	0	0	0	0	0	0
Westchester	2	<1	3	0	0	0	10
Wyoming	0	0	0	0	0	0	0
Yates	0	0	0	0	0	0	0

**Table 22: Monthly Average Number of Recipients
Participating in Training and Education by Type of Activity and Average Weekly Hours in all Activities ¹
Safety Net Non-MOE
July 2022 - June 2023**

	Vocational Education	Job Skills Training	Educational Training	Secondary School or Equivalent	Teen Head of Household	Other Activities	Average Weekly Hours
Local District							
New York State	884	68	103	17	1	18	-
New York City	783	-	0	-	-	-	-
Rest of State	101	68	103	17	1	18	15
Albany	0	7	0	0	0	0	1
Allegany	0	3	<1	<1	0	0	9
Broome	<1	<1	7	1	0	1	9
Cattaraugus	1	2	0	0	0	<1	11
Cayuga	0	0	1	0	0	0	3
Chautauqua	<1	<1	4	0	0	0	5
Chemung	0	0	0	0	0	8	0
Chenango	0	0	0	0	0	0	0
Clinton	0	0	0	0	0	<1	0
Columbia	0	0	0	0	0	1	0
Cortland	0	0	<1	<1	<1	0	3
Delaware	0	0	0	0	0	0	0
Dutchess	0	0	<1	0	0	0	1
Erie	1	49	32	0	0	0	22
Essex	0	0	0	1	0	0	<1
Franklin	<1	0	1	0	0	0	5
Fulton	0	0	0	0	0	0	0
Genesee	<1	0	0	0	0	0	1
Greene	0	0	<1	<1	0	<1	<1
Hamilton	0	0	0	0	0	0	0
Herkimer	<1	0	<1	<1	0	0	2
Jefferson	0	0	<1	0	0	0	1
Lewis	0	0	0	<1	0	0	1
Livingston	0	0	1	1	0	0	10
Madison	0	0	0	0	0	0	0
Monroe	8	0	11	0	0	0	12
Montgomery	0	0	0	0	0	<1	0
Nassau	76	1	7	3	0	5	10
Niagara	<1	<1	1	0	0	0	6
Oneida	1	0	5	1	0	2	10
Onondaga	4	2	25	<1	0	0	8
Ontario	<1	0	<1	0	0	0	2
Orange	<1	0	1	0	0	0	2
Orleans	0	1	<1	0	0	0	10
Oswego	0	<1	<1	0	1	0	6
Otsego	0	0	0	0	0	0	0
Putnam	0	0	0	0	0	0	0
Rensselaer	0	0	0	0	0	1	0
Rockland	1	0	0	4	0	<1	6
St. Lawrence	<1	0	<1	0	0	0	3
Saratoga	0	<1	1	0	0	0	1
Schenectady	<1	<1	1	<1	0	0	3
Schoharie	0	0	0	0	0	0	0
Schuyler	0	1	<1	0	0	<1	<1
Seneca	0	0	0	4	0	0	2
Steuben	0	0	1	0	0	0	5
Suffolk	4	1	1	<1	0	0	22
Sullivan	0	0	<1	<1	0	<1	3
Tioga	<1	0	0	<1	0	0	3
Tompkins	0	0	0	0	0	0	0
Ulster	0	0	0	0	0	0	0
Warren	0	0	<1	<1	<1	0	10
Washington	0	0	0	0	0	0	0
Wayne	0	0	<1	0	0	0	<1
Westchester	3	1	1	0	0	0	13
Wyoming	0	0	0	0	0	0	0
Yates	<1	1	0	0	0	0	3

Section (e) Education and Training Work Activities Footnotes

1 Figures for New York State and New York City for TANF and SNA MOE are based on sample data from the Federal TANF and SNA MOE quarterly disaggregated reports submitted to the US Department of Health and Human Services for the period of July 2022 to June 2023. This is the only source for New York City and thus statewide data on work participation. Data for all other districts is derived from the Welfare Reporting and Tracking System, which contains all necessary data for this purpose (there is insufficient sample size to develop work activity estimates for non-New York City districts from the federal samples). As a result, New York City and rest of state figures will not sum to the statewide total. Recipients may be participating in more than one activity.

Figures for New York City SNA Non-MOE are derived from work participation reports provided by the New York City Human Resources Administration (HRA). The HRA reports do not include hours in activities. All other SNA Non-MOE data is derived from the Welfare Reporting and Tracking System.

Due to rounding in the calculation of averages, the total averages may not equal summation of the individual averages. Dashes signify that the cell is not part of the reporting data set for that activity and region.

SNA Non-MOE activity counts for Vocational Education may include referred for enrollment, conciliation and referred for noncompliance/sanction counts.

This page intentionally left blank

Section (f)

Sanctions

- Number of sanctions by type of sanction
- Average days until compliance
- Number and outcome of administrative hearings by issue

**Table 23: Monthly Average Number of Recipients in Sanction Status
Total Public Assistance
July 2022 - June 2023**

Local District	Employment		Child Support	Drug/Alcohol		Intentional Program Violation	Other		Total Non Durational / Durational		Grand Total
	Non Durational	Durational	Non Durational	Non Durational	Durational	Durational	Non Durational	Durational	Non Durational	Durational	
	New York State	46	510	1,841	110	127	33	59	19	2,056	
New York City	30	0	1,530	7	0	0	8	0	1,575	0	1,575
Rest of State	16	510	311	103	127	33	51	19	481	689	1,170
Albany	2	6	5	0	1	0	0	0	7	7	14
Allegany	0	3	1	0	0	1	0	1	1	5	6
Broome	1	20	21	2	3	12	1	2	25	37	62
Cattaraugus	0	4	11	7	1	0	0	0	18	5	23
Cayuga	0	19	1	2	3	0	2	0	5	22	27
Chautauqua	1	30	24	4	6	0	2	0	31	36	67
Chemung	0	3	0	2	2	0	0	0	2	5	7
Chenango	0	2	6	2	2	0	0	0	8	4	12
Clinton	0	5	0	1	1	0	1	1	2	7	9
Columbia	0	2	1	0	0	0	0	0	1	2	3
Cortland	0	2	1	0	0	0	0	0	1	2	3
Delaware	0	1	0	0	0	0	0	0	0	1	1
Dutchess	0	5	4	1	7	0	2	0	7	12	19
Erie	0	125	22	5	10	0	2	0	29	135	164
Essex	0	2	0	0	0	0	1	0	1	2	3
Franklin	0	6	1	0	0	0	1	0	2	6	8
Fulton	0	2	0	0	0	0	0	0	0	2	2
Genesee	0	0	0	0	1	0	0	0	0	1	1
Greene	0	3	0	0	1	0	0	0	0	4	4
Hamilton	0	0	0	0	0	0	0	0	0	0	0
Herkimer	1	5	1	1	2	0	2	1	5	8	13
Jefferson	2	15	4	2	5	1	4	0	12	21	33
Lewis	0	1	0	0	0	0	0	0	0	1	1
Livingston	0	1	0	0	1	0	0	0	0	2	2
Madison	0	2	1	0	0	0	0	0	1	2	3
Monroe	0	7	61	7	25	7	3	1	71	40	111
Montgomery	1	2	2	0	2	0	0	2	3	6	9
Nassau	0	38	7	0	1	0	1	0	8	39	47
Niagara	0	19	5	10	9	4	6	5	21	37	58
Oneida	0	7	4	0	2	1	1	1	5	11	16
Onondaga	0	13	45	7	4	3	11	0	63	20	83
Ontario	0	7	3	2	2	0	0	0	5	9	14
Orange	0	9	8	3	9	0	2	0	13	18	31
Orleans	0	5	2	1	1	1	0	0	3	7	10
Oswego	2	16	5	0	2	0	0	1	7	19	26
Otsego	0	0	0	0	0	0	0	0	0	0	0
Putnam	0	0	0	0	0	0	0	0	0	0	0
Rensselaer	0	7	4	0	0	0	1	0	5	7	12
Rockland	0	9	2	1	1	0	1	0	4	10	14
St. Lawrence	5	13	0	5	1	1	0	0	10	15	25
Saratoga	0	0	0	1	1	0	0	0	1	1	2
Schenectady	0	11	5	6	3	0	0	0	11	14	25
Schoharie	0	1	0	0	0	0	0	0	0	1	1
Schuyler	0	1	0	0	0	0	0	0	0	1	1
Seneca	0	2	1	0	1	0	0	0	1	3	4
Steuben	0	5	13	2	1	1	0	0	15	7	22
Suffolk	0	53	5	15	1	1	2	0	22	55	77
Sullivan	1	9	1	3	1	0	0	0	5	10	15
Tioga	0	0	0	0	1	0	0	0	0	1	1
Tompkins	0	1	5	4	2	0	0	0	9	3	12
Ulster	0	2	2	2	4	0	0	1	4	7	11
Warren	0	2	1	1	1	0	0	1	2	4	6
Washington	0	1	0	0	1	0	0	0	0	2	2
Wayne	0	2	0	1	3	0	0	0	1	5	6
Westchester	0	2	26	3	2	0	5	2	34	6	40
Wyoming	0	0	0	0	0	0	0	0	0	0	0
Yates	0	2	0	0	0	0	0	0	0	2	2

**Table 24: Monthly Average Number of Recipients in Sanction Status
Temporary Assistance for Needy Families
July 2022 - June 2023**

Local District	Employment		Child Support	Drug/Alcohol		Intentional Program Violation	Other		Total Non Durational / Durational		Grand Total
	Non	Durational	Non	Non	Durational	Durational	Non	Durational	Non	Durational	
	Durational	Durational	Durational	Durational	Durational	Durational	Durational	Durational	Durational	Durational	
New York State	9	185	1,354	18	21	14	38	13	1,419	233	1,652
New York City	3	0	1,111	0	0	0	1	0	1,115	0	1,115
Rest of State	6	185	243	18	21	14	37	13	304	233	537
Albany	0	2	4	0	0	0	0	0	4	2	6
Allegany	0	2	1	0	0	0	0	1	1	3	4
Broome	0	5	16	1	1	5	0	1	17	12	29
Cattaraugus	0	1	11	2	0	0	0	0	13	1	14
Cayuga	0	9	1	0	1	0	1	0	2	10	12
Chautauqua	0	15	19	1	1	0	2	0	22	16	38
Chemung	0	2	0	1	1	0	0	0	1	3	4
Chenango	0	1	6	1	1	0	0	0	7	2	9
Clinton	0	3	0	0	0	0	1	1	1	4	5
Columbia	0	1	1	0	0	0	0	0	1	1	2
Cortland	0	1	1	0	0	0	0	0	1	1	2
Delaware	0	1	0	0	0	0	0	0	0	1	1
Dutchess	0	3	4	0	1	0	1	0	5	4	9
Erie	0	48	15	0	0	0	2	0	17	48	65
Essex	0	0	0	0	0	0	1	0	1	0	1
Franklin	0	2	1	0	0	0	1	0	2	2	4
Fulton	0	1	0	0	0	0	0	0	0	1	1
Genesee	0	0	0	0	0	0	0	0	0	0	0
Greene	0	1	0	0	0	0	0	0	0	1	1
Hamilton	0	0	0	0	0	0	0	0	0	0	0
Herkimer	0	1	0	0	0	0	1	1	1	2	3
Jefferson	1	4	4	0	1	0	2	0	7	5	12
Lewis	0	1	0	0	0	0	0	0	0	1	1
Livingston	0	0	0	0	0	0	0	0	0	0	0
Madison	0	1	1	0	0	0	0	0	1	1	2
Monroe	0	3	43	1	7	2	3	1	47	13	60
Montgomery	0	1	2	0	1	0	0	2	2	4	6
Nassau	0	12	5	0	0	0	1	0	6	12	18
Niagara	0	7	4	2	1	1	4	3	10	12	22
Oneida	0	1	3	0	0	1	1	1	4	3	7
Onondaga	0	4	35	0	0	2	6	0	41	6	47
Ontario	0	3	1	0	0	0	0	0	1	3	4
Orange	0	3	6	1	2	0	2	0	9	5	14
Orleans	0	2	2	0	0	0	0	0	2	2	4
Oswego	1	8	4	0	0	0	0	1	5	9	14
Otsego	0	0	0	0	0	0	0	0	0	0	0
Putnam	0	0	0	0	0	0	0	0	0	0	0
Rensselaer	0	1	4	0	0	0	1	0	5	1	6
Rockland	0	2	2	1	0	0	1	0	4	2	6
St. Lawrence	3	4	0	1	0	1	0	0	4	5	9
Saratoga	0	0	0	0	0	0	0	0	0	0	0
Schenectady	0	2	5	2	0	0	0	0	7	2	9
Schoharie	0	1	0	0	0	0	0	0	0	1	1
Schuyler	0	0	0	0	0	0	0	0	0	0	0
Seneca	0	1	1	0	0	0	0	0	1	1	2
Steuben	0	1	11	1	0	1	0	0	12	2	14
Suffolk	0	15	3	2	0	1	2	0	7	16	23
Sullivan	1	4	1	1	0	0	0	0	3	4	7
Tioga	0	0	0	0	0	0	0	0	0	0	0
Tompkins	0	1	5	0	0	0	0	0	5	1	6
Ulster	0	0	1	0	2	0	0	0	1	2	3
Warren	0	1	1	0	0	0	0	0	1	1	2
Washington	0	0	0	0	0	0	0	0	0	0	0
Wayne	0	1	0	0	1	0	0	0	0	2	2
Westchester	0	1	19	0	0	0	4	1	23	2	25
Wyoming	0	0	0	0	0	0	0	0	0	0	0
Yates	0	1	0	0	0	0	0	0	0	1	1

**Table 25: Monthly Average Number of Recipients in Sanction Status
Safety Net MOE
July 2022 - June 2023**

Local District	Employment		Child Support	Drug/Alcohol		Intentional Program Violation	Other		Total Non Durational / Durational		Grand Total
	Non Durational	Durational	Non Durational	Non Durational	Durational	Durational	Non Durational	Durational	Non Durational	Durational	
	New York State	25	114	391	8	11	9	7	1	431	
New York City	17	0	335	3	0	0	1	0	356	0	356
Rest of State	8	114	56	5	11	9	6	1	75	135	210
Albany	2	2	1	0	0	0	0	0	3	2	5
Allegany	0	0	0	0	0	0	0	0	0	0	0
Broome	1	9	4	0	0	4	1	0	6	13	19
Cattaraugus	0	1	0	0	0	0	0	0	0	1	1
Cayuga	0	2	0	0	0	0	1	0	1	2	3
Chautauqua	1	7	3	0	1	0	0	0	4	8	12
Chemung	0	0	0	0	0	0	0	0	0	0	0
Chenango	0	0	0	0	0	0	0	0	0	0	0
Clinton	0	0	0	0	0	0	0	0	0	0	0
Columbia	0	1	0	0	0	0	0	0	0	1	1
Cortland	0	0	0	0	0	0	0	0	0	0	0
Delaware	0	0	0	0	0	0	0	0	0	0	0
Dutchess	0	0	0	0	0	0	0	0	0	0	0
Erie	0	27	5	0	2	0	0	0	5	29	34
Essex	0	0	0	0	0	0	0	0	0	0	0
Franklin	0	1	0	0	0	0	0	0	0	1	1
Fulton	0	0	0	0	0	0	0	0	0	0	0
Genesee	0	0	0	0	0	0	0	0	0	0	0
Greene	0	0	0	0	0	0	0	0	0	0	0
Hamilton	0	0	0	0	0	0	0	0	0	0	0
Herkimer	1	1	1	0	0	0	0	0	2	1	3
Jefferson	1	4	0	0	0	0	1	0	2	4	6
Lewis	0	0	0	0	0	0	0	0	0	0	0
Livingston	0	1	0	0	0	0	0	0	0	1	1
Madison	0	0	0	0	0	0	0	0	0	0	0
Monroe	0	2	15	2	5	3	0	0	17	10	27
Montgomery	1	0	0	0	0	0	0	0	1	0	1
Nassau	0	13	2	0	0	0	0	0	2	13	15
Niagara	0	5	1	0	2	1	0	1	1	9	10
Oneida	0	2	1	0	0	0	0	0	1	2	3
Onondaga	0	5	8	1	0	1	2	0	11	6	17
Ontario	0	0	2	0	0	0	0	0	2	0	2
Orange	0	3	2	0	1	0	0	0	2	4	6
Orleans	0	0	0	0	0	0	0	0	0	0	0
Oswego	0	1	0	0	0	0	0	0	0	1	1
Otsego	0	0	0	0	0	0	0	0	0	0	0
Putnam	0	0	0	0	0	0	0	0	0	0	0
Rensselaer	0	5	0	0	0	0	0	0	0	5	5
Rockland	0	1	0	0	0	0	0	0	0	1	1
St. Lawrence	1	3	0	0	0	0	0	0	1	3	4
Saratoga	0	0	0	0	0	0	0	0	0	0	0
Schenectady	0	2	0	0	0	0	0	0	0	2	2
Schoharie	0	0	0	0	0	0	0	0	0	0	0
Schuyler	0	0	0	0	0	0	0	0	0	0	0
Seneca	0	0	0	0	0	0	0	0	0	0	0
Steuben	0	0	1	0	0	0	0	0	1	0	1
Suffolk	0	13	2	1	0	0	0	0	3	13	16
Sullivan	0	1	0	0	0	0	0	0	0	1	1
Tioga	0	0	0	0	0	0	0	0	0	0	0
Tompkins	0	0	0	0	0	0	0	0	0	0	0
Ulster	0	2	1	0	0	0	0	0	1	2	3
Warren	0	0	0	0	0	0	0	0	0	0	0
Washington	0	0	0	0	0	0	0	0	0	0	0
Wayne	0	0	0	0	0	0	0	0	0	0	0
Westchester	0	0	7	1	0	0	1	0	9	0	9
Wyoming	0	0	0	0	0	0	0	0	0	0	0
Yates	0	0	0	0	0	0	0	0	0	0	0

**Table 26: Monthly Average Number of Recipients in Sanction Status
Safety Net Non-MOE
July 2022 - June 2023**

Local District	Employment		Child Support	Drug/Alcohol		Intentional Program Violation	Other		Total Non Durational / Durational		Grand Total
	Non Durational	Durational	Non Durational	Non Durational	Durational	Durational	Non Durational	Durational	Non Durational	Durational	
	New York State	12	211	96	84	95	10	14	5	206	
New York City	10	0	84	4	0	0	6	0	104	0	104
Rest of State	2	211	12	80	95	10	8	5	102	321	423
Albany	0	2	0	0	1	0	0	0	0	3	3
Allegany	0	1	0	0	0	1	0	0	0	2	2
Broome	0	6	1	1	2	3	0	1	2	12	14
Cattaraugus	0	2	0	5	1	0	0	0	5	3	8
Cayuga	0	8	0	2	2	0	0	0	2	10	12
Chautauqua	0	8	2	3	4	0	0	0	5	12	17
Chemung	0	1	0	1	1	0	0	0	1	2	3
Chenango	0	1	0	1	1	0	0	0	1	2	3
Clinton	0	2	0	1	1	0	0	0	1	3	4
Columbia	0	0	0	0	0	0	0	0	0	0	0
Cortland	0	1	0	0	0	0	0	0	0	1	1
Delaware	0	0	0	0	0	0	0	0	0	0	0
Dutchess	0	2	0	1	6	0	1	0	2	8	10
Erie	0	50	2	5	8	0	0	0	7	58	65
Essex	0	2	0	0	0	0	0	0	0	2	2
Franklin	0	3	0	0	0	0	0	0	0	3	3
Fulton	0	1	0	0	0	0	0	0	0	1	1
Genesee	0	0	0	0	1	0	0	0	0	1	1
Greene	0	2	0	0	1	0	0	0	0	3	3
Hamilton	0	0	0	0	0	0	0	0	0	0	0
Herkimer	0	3	0	1	2	0	1	0	2	5	7
Jefferson	0	7	0	2	4	1	1	0	3	12	15
Lewis	0	0	0	0	0	0	0	0	0	0	0
Livingston	0	0	0	0	1	0	0	0	0	1	1
Madison	0	1	0	0	0	0	0	0	0	1	1
Monroe	0	2	3	4	13	2	0	0	7	17	24
Montgomery	0	1	0	0	1	0	0	0	0	2	2
Nassau	0	13	0	0	1	0	0	0	0	14	14
Niagara	0	7	0	8	6	2	2	1	10	16	26
Oneida	0	4	0	0	2	0	0	0	0	6	6
Onondaga	0	4	2	6	4	0	3	0	11	8	19
Ontario	0	4	0	2	2	0	0	0	2	6	8
Orange	0	3	0	2	6	0	0	0	2	9	11
Orleans	0	3	0	1	1	1	0	0	1	5	6
Oswego	1	7	1	0	2	0	0	0	2	9	11
Otsego	0	0	0	0	0	0	0	0	0	0	0
Putnam	0	0	0	0	0	0	0	0	0	0	0
Rensselaer	0	1	0	0	0	0	0	0	0	1	1
Rockland	0	6	0	0	1	0	0	0	0	7	7
St. Lawrence	1	6	0	4	1	0	0	0	5	7	12
Saratoga	0	0	0	1	1	0	0	0	1	1	2
Schenectady	0	7	0	4	3	0	0	0	4	10	14
Schoharie	0	0	0	0	0	0	0	0	0	0	0
Schuyler	0	1	0	0	0	0	0	0	0	1	1
Seneca	0	1	0	0	1	0	0	0	0	2	2
Steuben	0	4	1	1	1	0	0	0	2	5	7
Suffolk	0	25	0	12	1	0	0	0	12	26	38
Sullivan	0	4	0	2	1	0	0	0	2	5	7
Tioga	0	0	0	0	1	0	0	0	0	1	1
Tompkins	0	0	0	4	2	0	0	0	4	2	6
Ulster	0	0	0	2	2	0	0	1	2	3	5
Warren	0	1	0	1	1	0	0	1	1	3	4
Washington	0	1	0	0	1	0	0	0	0	2	2
Wayne	0	1	0	1	2	0	0	0	1	3	4
Westchester	0	1	0	2	2	0	0	1	2	4	6
Wyoming	0	0	0	0	0	0	0	0	0	0	0
Yates	0	1	0	0	0	0	0	0	0	1	1

Table 27: Monthly Average Number of Sanctioned Recipients Complying and the Average Number of Days until Compliance
Total Public Assistance
July 2022 - June 2023

Local District	Employment		Child Support		Drug/Alcohol		Intentional Program Violation		Other		Total Complied / Total Avg Days Until Compliance	
	Number Complied	Avg Days Until Compliance	Number Complied	Avg Days Until Compliance	Number Complied	Avg Days Until Compliance	Number Complied	Avg Days Until Compliance	Number Complied	Avg Days Until Compliance	Number Complied	Avg Days Until Compliance
New York State ¹	28	337	16	118	18	451	<1	322	4	281	66	315
New York City ¹	<1	1,057	-	-	1	3,304	0	0	1	1,249	2	2,148
Rest of State	28	322	16	118	17	291	<1	322	3	183	64	256
Albany	<1	162	0	0	0	0	0	0	<1	57	<1	127
Allegany	<1	84	0	0	<1	462	0	0	<1	383	<1	243
Broome	<1	612	2	169	1	343	<1	184	<1	82	3	300
Cattaraugus	<1	91	<1	103	1	53	0	0	0	0	1	68
Cayuga	2	114	<1	23	<1	492	0	0	<1	17	2	187
Chautauqua	2	718	3	101	1	339	0	0	<1	1	6	357
Chemung	<1	43	<1	91	<1	20	0	0	0	0	<1	40
Chenango	0	0	0	0	<1	113	0	0	0	0	<1	113
Clinton	<1	22	0	0	<1	59	0	0	0	0	<1	44
Columbia	<1	152	<1	28	<1	39	<1	15	<1	40	<1	52
Cortland	0	0	<1	65	<1	62	0	0	<1	75	<1	66
Delaware	<1	91	0	0	<1	14	0	0	0	0	<1	40
Dutchess	<1	40	<1	26	<1	33	0	0	<1	146	<1	89
Erie	15	310	1	237	2	748	<1	213	<1	811	18	369
Essex	0	0	0	0	<1	57	0	0	0	0	<1	57
Franklin	<1	1,350	0	0	0	0	0	0	<1	35	<1	765
Fulton	0	0	0	0	0	0	0	0	0	0	0	0
Genesee	<1	30	0	0	0	0	0	0	0	0	<1	30
Greene	0	0	0	0	<1	166	0	0	0	0	<1	166
Hamilton	0	0	0	0	0	0	0	0	0	0	0	0
Herkimer	<1	1,703	<1	91	<1	7	0	0	<1	507	<1	629
Jefferson	2	113	1	143	1	71	<1	364	<1	35	4	99
Lewis	0	0	0	0	<1	60	0	0	0	0	<1	60
Livingston	<1	429	<1	91	<1	35	0	0	<1	14	<1	172
Madison	<1	90	0	0	0	0	0	0	<1	13	<1	52
Monroe	<1	865	4	88	3	412	<1	214	1	269	8	283
Montgomery	0	0	<1	106	<1	6,277	0	0	<1	116	<1	2,578
Nassau	1	588	<1	49	<1	189	0	0	0	0	1	415
Niagara	<1	123	1	52	1	89	<1	539	1	107	3	116
Oneida	<1	532	<1	120	<1	26	0	0	<1	119	<1	203
Onondaga	<1	351	2	123	1	937	<1	394	1	107	4	281
Ontario	1	146	<1	116	<1	182	0	0	0	0	1	151
Orange	<1	65	<1	167	<1	130	0	0	0	0	<1	121
Orleans	<1	770	<1	60	<1	952	0	0	<1	119	<1	671
Oswego	1	138	<1	74	<1	833	0	0	<1	48	1	247
Otsego	0	0	<1	619	0	0	0	0	0	0	<1	619
Putnam	0	0	<1	102	0	0	0	0	0	0	<1	102
Rensselaer	<1	73	<1	83	<1	108	0	0	0	0	<1	82
Rockland	<1	23	0	0	<1	95	0	0	<1	241	<1	106
St. Lawrence	1	114	<1	50	<1	74	0	0	0	0	1	97
Saratoga	0	0	0	0	0	0	0	0	0	0	0	0
Schenectady	<1	538	<1	91	<1	70	0	0	<1	686	<1	268
Schoharie	0	0	<1	96	0	0	0	0	0	0	<1	96
Schuyler	<1	229	0	0	0	0	0	0	0	0	<1	229
Seneca	<1	170	<1	92	<1	50	0	0	0	0	<1	114
Steuben	<1	145	<1	60	0	0	0	0	0	0	<1	97
Suffolk	3	88	1	150	2	23	0	0	0	0	6	74
Sullivan	<1	105	0	0	<1	38	0	0	0	0	<1	74
Tioga	0	0	<1	20	<1	63	0	0	<1	86	<1	64
Tompkins	<1	499	<1	198	2	49	0	0	0	0	2	155
Ulster	<1	92	<1	19	<1	96	0	0	0	0	<1	78
Warren	<1	16	0	0	<1	9	0	0	<1	2	<1	9
Washington	<1	31	0	0	0	0	0	0	0	0	<1	31
Wayne	0	0	<1	152	0	0	0	0	<1	61	<1	107
Westchester	<1	1,015	1	78	2	231	0	0	<1	231	3	318
Wyoming	<1	5,092	<1	90	<1	94	0	0	0	0	<1	1,759
Yates	<1	50	<1	60	0	0	0	0	0	0	<1	53

1. New York City data to determine child support compliance is not available.

**Table 28: Monthly Average Number of Sanctioned Recipients Complying and the Average Number of Days until Compliance
Temporary Assistance for Needy Families
July 2022 - June 2023**

Local District	Employment		Child Support		Drug/Alcohol		Intentional Program Violation		Other		Total Complied / Total Avg Days Until Compliance	
	Number Complied	Avg Days Until Compliance	Number Complied	Avg Days Until Compliance	Number Complied	Avg Days Until Compliance	Number Complied	Avg Days Until Compliance	Number Complied	Avg Days Until Compliance	Number Complied	Avg Days Until Compliance
New York State ¹	15	207	12	119	1	119	<1	559	3	152	31	164
New York City ¹	<1	1,136	0	0	0	0	0	0	<1	2,126	<1	1,466
Rest of State	15	199	12	119	1	119	<1	559	3	117	31	157
Albany	0	0	0	0	0	0	0	0	<1	57	<1	57
Allegany	<1	52	0	0	0	0	0	0	<1	30	<1	43
Broome	<1	60	1	107	<1	442	0	0	0	0	1	150
Cattaraugus	0	0	<1	103	<1	73	0	0	0	0	<1	90
Cayuga	1	65	<1	3	<1	29	0	0	<1	17	1	52
Chautauqua	1	1,319	2	109	<1	153	0	0	0	0	3	526
Chemung	<1	37	<1	91	0	0	0	0	0	0	<1	50
Chenango	0	0	0	0	<1	74	0	0	0	0	<1	74
Clinton	<1	30	0	0	0	0	0	0	0	0	<1	30
Columbia	0	0	<1	28	0	0	0	0	0	0	<1	28
Cortland	0	0	<1	23	<1	90	0	0	<1	75	<1	66
Delaware	<1	91	0	0	<1	25	0	0	0	0	<1	58
Dutchess	<1	27	<1	26	<1	26	0	0	<1	19	<1	24
Erie	8	157	1	278	<1	749	0	0	<1	19	9	179
Essex	0	0	0	0	0	0	0	0	0	0	0	0
Franklin	<1	71	0	0	0	0	0	0	<1	45	<1	60
Fulton	0	0	0	0	0	0	0	0	0	0	0	0
Genesee	<1	30	0	0	0	0	0	0	0	0	<1	30
Greene	0	0	0	0	0	0	0	0	0	0	0	0
Hamilton	0	0	0	0	0	0	0	0	0	0	0	0
Herkimer	0	0	0	0	0	0	0	0	<1	123	<1	123
Jefferson	1	89	1	143	<1	59	0	0	<1	75	2	101
Lewis	0	0	0	0	0	0	0	0	0	0	0	0
Livingston	<1	137	<1	91	0	0	0	0	<1	14	<1	81
Madison	<1	90	0	0	0	0	0	0	0	0	<1	90
Monroe	<1	354	3	91	1	96	0	0	1	269	5	142
Montgomery	0	0	<1	106	0	0	0	0	<1	140	<1	123
Nassau	<1	331	<1	39	0	0	0	0	0	0	<1	185
Niagara	<1	110	1	56	<1	81	<1	687	1	139	2	134
Oneida	<1	60	<1	100	0	0	0	0	<1	133	<1	103
Onondaga	<1	134	2	114	0	0	<1	303	1	117	3	123
Ontario	1	79	<1	116	0	0	0	0	0	0	1	86
Orange	<1	37	<1	221	<1	91	0	0	0	0	<1	132
Orleans	<1	2,111	<1	60	<1	76	0	0	0	0	<1	1,090
Oswego	1	147	<1	74	0	0	0	0	<1	48	1	129
Otsego	0	0	0	0	0	0	0	0	0	0	0	0
Putnam	0	0	0	0	0	0	0	0	0	0	0	0
Rensselaer	<1	33	<1	86	0	0	0	0	0	0	<1	78
Rockland	<1	23	0	0	0	0	0	0	0	0	<1	23
St. Lawrence	1	67	0	0	<1	49	0	0	0	0	1	61
Saratoga	0	0	0	0	0	0	0	0	0	0	0	0
Schenectady	<1	39	<1	91	<1	31	0	0	0	0	<1	67
Schoharie	0	0	<1	96	0	0	0	0	0	0	<1	96
Schuyler	0	0	0	0	0	0	0	0	0	0	0	0
Seneca	<1	15	0	0	0	0	0	0	0	0	<1	15
Steuben	<1	30	<1	60	0	0	0	0	0	0	<1	53
Suffolk	1	51	1	172	<1	24	0	0	0	0	2	87
Sullivan	<1	25	0	0	<1	41	0	0	0	0	<1	30
Tioga	0	0	<1	20	0	0	0	0	<1	86	<1	64
Tompkins	<1	109	<1	198	<1	30	0	0	0	0	<1	144
Ulster	0	0	<1	8	0	0	0	0	0	0	<1	8
Warren	0	0	0	0	0	0	0	0	0	0	0	0
Washington	0	0	0	0	0	0	0	0	0	0	0	0
Wayne	0	0	<1	152	0	0	0	0	<1	61	<1	107
Westchester	<1	15	<1	130	0	0	0	0	<1	200	<1	107
Wyoming	0	0	<1	90	0	0	0	0	0	0	<1	90
Yates	<1	14	0	0	0	0	0	0	0	0	<1	14

1. New York City data to determine child support compliance is not available.

Table 29: Monthly Average Number of Sanctioned Recipients Complying and the Average Number of Days until Compliance
Safety Net MOE
July 2022 - June 2023

Local District	Employment		Child Support		Drug/Alcohol		Intentional Program Violation		Other		Total Complied / Total Avg Days Until Compliance	
	Number Complied	Avg Days Until Compliance	Number Complied	Avg Days Until Compliance	Number Complied	Avg Days Until Compliance	Number Complied	Avg Days Until Compliance	Number Complied	Avg Days Until Compliance	Number Complied	Avg Days Until Compliance
New York State ¹	8	257	4	100	1	576	<1	273	<1	306	13	277
New York City ¹	<1	1,038	0	0	<1	4,256	0	0	<1	1,622	<1	2,312
Rest of State	8	220	4	100	1	116	<1	273	<1	109	13	167
Albany	<1	80	0	0	0	0	0	0	0	0	<1	80
Allegany	<1	182	0	0	0	0	0	0	0	0	<1	182
Broome	<1	257	1	276	0	0	<1	59	<1	82	1	235
Cattaraugus	0	0	0	0	0	0	0	0	0	0	0	0
Cayuga	1	208	<1	6	0	0	0	0	0	0	1	183
Chautauqua	1	148	1	19	<1	82	0	0	<1	1	2	74
Chemung	0	0	0	0	0	0	0	0	0	0	0	0
Chenango	0	0	0	0	0	0	0	0	0	0	0	0
Clinton	0	0	0	0	<1	152	0	0	0	0	<1	152
Columbia	<1	152	0	0	<1	63	0	0	0	0	<1	108
Cortland	0	0	<1	106	<1	64	0	0	0	0	<1	85
Delaware	0	0	0	0	0	0	0	0	0	0	0	0
Dutchess	0	0	0	0	0	0	0	0	0	0	0	0
Erie	4	257	<1	136	<1	98	<1	213	0	0	4	233
Essex	0	0	0	0	0	0	0	0	0	0	0	0
Franklin	0	0	0	0	0	0	0	0	0	0	0	0
Fulton	0	0	0	0	0	0	0	0	0	0	0	0
Genesee	0	0	0	0	0	0	0	0	0	0	0	0
Greene	0	0	0	0	<1	217	0	0	0	0	<1	217
Hamilton	0	0	0	0	0	0	0	0	0	0	0	0
Herkimer	0	0	<1	91	0	0	0	0	0	0	<1	91
Jefferson	1	113	0	0	<1	61	<1	364	0	0	1	126
Lewis	0	0	0	0	0	0	0	0	0	0	0	0
Livingston	0	0	0	0	<1	59	0	0	0	0	<1	59
Madison	0	0	0	0	0	0	0	0	<1	13	<1	13
Monroe	<1	802	1	75	1	213	<1	214	0	0	2	194
Montgomery	0	0	0	0	0	0	0	0	<1	91	<1	91
Nassau	<1	49	<1	75	0	0	0	0	0	0	<1	55
Niagara	<1	171	<1	15	<1	178	<1	242	<1	51	<1	131
Oneida	<1	46	<1	159	<1	3	0	0	<1	106	<1	92
Onondaga	<1	250	<1	148	0	0	<1	440	<1	121	<1	200
Ontario	<1	152	0	0	0	0	0	0	0	0	<1	152
Orange	<1	91	<1	33	<1	100	0	0	0	0	<1	85
Orleans	0	0	0	0	0	0	0	0	<1	158	<1	158
Oswego	<1	14	0	0	<1	10	0	0	0	0	<1	12
Otsego	0	0	0	0	0	0	0	0	0	0	0	0
Putnam	0	0	<1	102	0	0	0	0	0	0	<1	102
Rensselaer	<1	81	<1	66	0	0	0	0	0	0	<1	78
Rockland	0	0	0	0	<1	128	0	0	<1	241	<1	203
St. Lawrence	<1	182	<1	50	<1	183	0	0	0	0	<1	163
Saratoga	0	0	0	0	0	0	0	0	0	0	0	0
Schenectady	<1	2,061	0	0	0	0	0	0	0	0	<1	2,061
Schoharie	0	0	0	0	0	0	0	0	0	0	0	0
Schuyler	0	0	0	0	0	0	0	0	0	0	0	0
Seneca	<1	229	<1	92	<1	69	0	0	0	0	<1	115
Steuben	0	0	<1	60	0	0	0	0	0	0	<1	60
Suffolk	1	147	<1	82	<1	80	0	0	0	0	1	124
Sullivan	<1	234	0	0	0	0	0	0	0	0	<1	234
Tioga	0	0	0	0	<1	61	0	0	0	0	<1	61
Tompkins	<1	851	0	0	0	0	0	0	0	0	<1	851
Ulster	0	0	<1	29	<1	37	0	0	0	0	<1	33
Warren	<1	16	0	0	0	0	0	0	0	0	<1	16
Washington	0	0	0	0	0	0	0	0	0	0	0	0
Wayne	0	0	0	0	0	0	0	0	0	0	0	0
Westchester	0	0	1	53	<1	5	0	0	<1	262	1	69
Wyoming	0	0	0	0	0	0	0	0	0	0	0	0
Yates	<1	122	0	0	0	0	0	0	0	0	<1	122

1. New York City data to determine child support compliance is not available.

**Table 30: Monthly Average Number of Sanctioned Recipients Complying and the Average Number of Days until Compliance
Safety Net Non-MOE
July 2022 - June 2023**

Local District	Employment		Child Support		Drug/Alcohol		Intentional Program Violation		Other		Total Complied / Total Avg Days Until Compliance	
	Number Complied	Avg Days Until Compliance	Number Complied	Avg Days Until Compliance	Number Complied	Avg Days Until Compliance	Number Complied	Avg Days Until Compliance	Number Complied	Avg Days Until Compliance	Number Complied	Avg Days Until Compliance
New York State ¹	5	689	<1	190	16	501	<1	162	1	455	22	541
New York City ¹	<1	1,036	-	-	1	2,938	0	0	1	965	2	2,137
Rest of State	5	683	<1	190	15	362	<1	162	<1	343	20	452
Albany	<1	243	0	0	0	0	0	0	0	0	<1	243
Allegany	0	0	0	0	<1	462	0	0	<1	1,089	<1	776
Broome	<1	2,072	0	0	1	301	<1	309	0	0	1	656
Cattaraugus	<1	91	0	0	1	45	0	0	0	0	1	50
Cayuga	<1	103	<1	60	<1	646	0	0	0	0	<1	460
Chautauqua	<1	83	<1	199	1	473	0	0	0	0	1	282
Chemung	<1	60	0	0	<1	20	0	0	0	0	<1	30
Chenango	0	0	0	0	<1	153	0	0	0	0	<1	153
Clinton	<1	14	0	0	<1	12	0	0	0	0	<1	13
Columbia	0	0	0	0	<1	15	<1	15	<1	40	<1	23
Cortland	0	0	0	0	<1	33	0	0	0	0	<1	33
Delaware	0	0	0	0	<1	3	0	0	0	0	<1	3
Dutchess	<1	120	0	0	<1	37	0	0	<1	273	<1	195
Erie	3	861	<1	192	2	866	0	0	<1	1,405	5	866
Essex	0	0	0	0	<1	57	0	0	0	0	<1	57
Franklin	<1	3,269	0	0	0	0	0	0	<1	26	<1	1,647
Fulton	0	0	0	0	0	0	0	0	0	0	0	0
Genesee	0	0	0	0	0	0	0	0	0	0	0	0
Greene	0	0	0	0	<1	114	0	0	0	0	<1	114
Hamilton	0	0	0	0	0	0	0	0	0	0	0	0
Herkimer	<1	1,703	0	0	<1	7	0	0	<1	699	<1	803
Jefferson	<1	182	0	0	1	77	0	0	<1	15	1	80
Lewis	0	0	0	0	<1	60	0	0	0	0	<1	60
Livingston	<1	720	0	0	<1	11	0	0	0	0	<1	366
Madison	0	0	0	0	0	0	0	0	0	0	0	0
Monroe	<1	1,757	<1	106	1	817	0	0	0	0	1	895
Montgomery	0	0	0	0	<1	6,277	0	0	0	0	<1	6,277
Nassau	1	1,090	0	0	<1	189	0	0	0	0	1	813
Niagara	<1	67	0	0	1	86	0	0	<1	46	1	79
Oneida	<1	1,497	0	0	<1	32	0	0	0	0	<1	520
Onondaga	<1	1,087	<1	152	1	937	0	0	<1	79	1	641
Ontario	<1	324	0	0	<1	182	0	0	0	0	<1	243
Orange	<1	45	0	0	<1	207	0	0	0	0	<1	175
Orleans	<1	100	0	0	<1	1,244	0	0	<1	79	<1	526
Oswego	0	0	0	0	<1	1,107	0	0	0	0	<1	1,107
Otsego	0	0	<1	619	0	0	0	0	0	0	<1	619
Putnam	0	0	0	0	0	0	0	0	0	0	0	0
Rensselaer	<1	77	0	0	<1	108	0	0	0	0	<1	92
Rockland	0	0	0	0	<1	62	0	0	0	0	<1	62
St. Lawrence	<1	130	0	0	<1	76	0	0	0	0	<1	101
Saratoga	0	0	0	0	0	0	0	0	0	0	0	0
Schenectady	<1	14	0	0	<1	83	0	0	<1	686	<1	190
Schoharie	0	0	0	0	0	0	0	0	0	0	0	0
Schuyler	<1	229	0	0	0	0	0	0	0	0	<1	229
Seneca	<1	202	0	0	<1	31	0	0	0	0	<1	133
Steuben	<1	203	0	0	0	0	0	0	0	0	<1	203
Suffolk	1	75	0	0	2	15	0	0	0	0	3	36
Sullivan	<1	55	0	0	<1	38	0	0	0	0	<1	43
Tioga	0	0	0	0	<1	65	0	0	0	0	<1	65
Tompkins	<1	964	0	0	2	50	0	0	0	0	2	94
Ulster	<1	92	0	0	<1	108	0	0	0	0	<1	105
Warren	0	0	0	0	<1	9	0	0	<1	2	<1	6
Washington	<1	31	0	0	0	0	0	0	0	0	<1	31
Wayne	0	0	0	0	0	0	0	0	0	0	0	0
Westchester	<1	1,416	0	0	2	242	0	0	0	0	2	477
Wyoming	<1	5,092	0	0	<1	94	0	0	0	0	<1	2,593
Yates	<1	15	<1	60	0	0	0	0	0	0	<1	38

1. New York City data to determine child support compliance is not available.

Table 31: Administrative Hearings - Hearings Requested
Total Public Assistance
July 2022 - June 2023

Local District	Work Activities Related					
	Sanction Related			Work Supportive Services	Work Exemptions	
	Eligibility	Drug/ Alcohol	Work General		Disability Screening Exemptions	Other Work Exemptions
New York State	444	450	787	1,033	294	38
New York City	356	2	32	1,003	29	7
Rest of State	88	448	755	30	265	31
Albany	1	4	8	2	11	0
Allegany	0	0	3	0	1	0
Broome	4	9	20	0	8	1
Cattaraugus	0	0	3	0	1	0
Cayuga	0	2	7	0	2	0
Chautauqua	3	9	13	0	1	0
Chemung	0	9	2	0	1	0
Chenango	0	2	0	0	2	0
Clinton	0	4	5	0	4	0
Columbia	0	4	3	0	0	0
Cortland	0	2	3	0	0	0
Delaware	0	0	0	0	1	0
Dutchess	0	12	17	0	10	1
Erie	0	32	65	1	26	4
Essex	0	0	2	0	0	0
Franklin	0	1	4	0	0	0
Fulton	0	0	1	0	0	0
Genesee	0	3	2	0	0	0
Greene	0	0	3	0	1	0
Hamilton	0	0	0	0	0	0
Herkimer	0	6	2	0	0	0
Jefferson	0	27	38	0	2	1
Lewis	0	0	1	0	0	0
Livingston	0	1	3	0	5	0
Madison	0	1	0	0	0	0
Monroe	51	163	13	21	51	3
Montgomery	0	2	4	0	0	1
Nassau	0	5	78	2	24	2
Niagara	4	26	35	0	10	1
Oneida	1	16	17	0	2	0
Onondaga	4	4	17	0	24	4
Ontario	0	2	5	0	0	0
Orange	4	14	12	1	5	0
Orleans	0	3	3	0	2	0
Oswego	0	4	15	0	4	0
Otsego	0	2	5	0	1	0
Putnam	0	1	3	0	0	1
Rensselaer	0	2	12	0	0	0
Rockland	0	0	2	0	1	0
St. Lawrence	0	2	41	0	1	0
Saratoga	0	0	3	0	1	1
Schenectady	0	7	27	0	4	3
Schoharie	0	0	1	0	0	0
Schuyler	0	0	1	0	0	0
Seneca	0	0	1	0	0	0
Steuben	3	2	6	0	2	0
Suffolk	5	33	214	2	45	7
Sullivan	0	2	9	0	0	0
Tioga	0	0	0	0	0	0
Tompkins	1	10	1	0	1	1
Ulster	1	3	2	0	5	0
Warren	0	4	4	0	0	0
Washington	0	0	1	0	0	0
Wayne	0	1	1	0	0	0
Westchester	6	12	9	1	5	0
Wyoming	0	0	0	0	1	0
Yates	0	0	8	0	0	0

**Table 32: Administrative Hearings - Hearings Held
Total Public Assistance
July 2022 - June 2023**

Local District	Work Activities Related					
	Sanction Related			Work Supportive Services	Work Exemptions	
	Eligibility	Drug/ Alcohol	Work General		Disability Screening Exemptions	Other Work Exemptions
New York State	271	120	156	449	48	9
New York City	243	2	22	441	12	2
Rest of State	28	118	134	8	36	7
Albany	0	0	1	0	1	0
Allegany	0	0	1	0	1	0
Broome	2	1	4	0	1	0
Cattaraugus	0	0	1	0	0	0
Cayuga	0	0	0	0	1	0
Chautauqua	1	0	1	0	0	0
Chemung	0	0	0	0	0	0
Chenango	0	0	0	0	0	0
Clinton	0	0	1	0	0	0
Columbia	0	0	1	0	0	0
Cortland	0	1	0	0	0	0
Delaware	0	0	0	0	0	0
Dutchess	0	3	7	0	2	0
Erie	0	2	11	0	1	1
Essex	0	0	0	0	0	0
Franklin	0	0	0	0	0	0
Fulton	0	0	0	0	0	0
Genesee	0	0	0	0	0	0
Greene	0	0	0	0	0	0
Hamilton	0	0	0	0	0	0
Herkimer	0	2	1	0	0	0
Jefferson	0	8	5	0	0	0
Lewis	0	0	0	0	0	0
Livingston	0	0	1	0	0	0
Madison	0	0	0	0	0	0
Monroe	21	59	11	7	9	0
Montgomery	0	0	0	0	0	0
Nassau	0	0	9	0	3	0
Niagara	1	26	30	0	6	0
Oneida	0	3	1	0	0	0
Onondaga	2	0	7	0	3	2
Ontario	0	0	0	0	0	0
Orange	0	4	2	1	0	0
Orleans	0	1	0	0	0	0
Oswego	0	0	8	0	0	0
Otsego	0	0	0	0	0	0
Putnam	0	0	2	0	0	0
Rensselaer	0	0	2	0	0	0
Rockland	0	0	1	0	0	0
St. Lawrence	0	0	3	0	0	2
Saratoga	0	0	1	0	0	0
Schenectady	0	4	2	0	0	0
Schoharie	0	0	0	0	0	0
Schuyler	0	0	0	0	0	0
Seneca	0	0	0	0	0	0
Steuben	0	0	0	0	0	0
Suffolk	0	2	13	0	7	1
Sullivan	0	0	1	0	0	0
Tioga	0	0	0	0	0	0
Tompkins	0	2	0	0	0	0
Ulster	0	0	1	0	0	0
Warren	0	0	1	0	0	0
Washington	0	0	0	0	0	0
Wayne	0	0	0	0	0	0
Westchester	1	0	2	0	1	1
Wyoming	0	0	0	0	0	0
Yates	0	0	2	0	0	0

Table 33: Administrative Hearings - Issues Affirmed
Total Public Assistance
July 2022 - June 2023

Local District	Work Activities Related					
	Sanction Related			Work Supportive Services	Work Exemptions	
	Eligibility	Drug/ Alcohol	Work General		Disability Screening Exemptions	Other Work Exemptions
New York State	9	40	39	43	10	6
New York City	3	0	0	42	0	0
Rest of State	6	40	39	1	10	6
Albany	0	0	0	0	0	0
Allegany	0	0	1	0	1	0
Broome	1	1	2	0	1	0
Cattaraugus	0	0	0	0	0	0
Cayuga	0	0	0	0	0	0
Chautauqua	0	0	1	0	0	0
Chemung	0	0	0	0	0	0
Chenango	0	0	0	0	0	0
Clinton	0	0	0	0	0	0
Columbia	0	0	0	0	0	0
Cortland	0	1	0	0	0	0
Delaware	0	0	0	0	0	0
Dutchess	0	3	3	0	1	0
Erie	0	2	3	0	1	1
Essex	0	0	0	0	0	0
Franklin	0	0	0	0	0	0
Fulton	0	0	0	0	0	0
Genesee	0	0	0	0	0	0
Greene	0	0	0	0	0	0
Hamilton	0	0	0	0	0	0
Herkimer	0	1	1	0	0	0
Jefferson	0	5	4	0	0	0
Lewis	0	0	0	0	0	0
Livingston	0	0	0	0	0	0
Madison	0	0	0	0	0	0
Monroe	4	15	1	1	1	0
Montgomery	0	0	0	0	0	0
Nassau	0	0	4	0	1	0
Niagara	1	3	4	0	0	0
Oneida	0	2	0	0	0	0
Onondaga	0	0	1	0	1	1
Ontario	0	0	0	0	0	0
Orange	0	2	1	0	0	0
Orleans	0	1	0	0	0	0
Oswego	0	0	2	0	0	0
Otsego	0	0	0	0	0	0
Putnam	0	0	1	0	0	0
Rensselaer	0	0	0	0	0	0
Rockland	0	0	1	0	0	0
St. Lawrence	0	0	1	0	0	2
Saratoga	0	0	0	0	0	0
Schenectady	0	2	1	0	0	0
Schoharie	0	0	0	0	0	0
Schuyler	0	0	0	0	0	0
Seneca	0	0	0	0	0	0
Steuben	0	0	0	0	0	0
Suffolk	0	1	6	0	3	1
Sullivan	0	0	0	0	0	0
Tioga	0	0	0	0	0	0
Tompkins	0	1	0	0	0	0
Ulster	0	0	0	0	0	0
Warren	0	0	0	0	0	0
Washington	0	0	0	0	0	0
Wayne	0	0	0	0	0	0
Westchester	0	0	1	0	0	1
Wyoming	0	0	0	0	0	0
Yates	0	0	0	0	0	0

Table 34: Administrative Hearings - Issues Reversed
Total Public Assistance
July 2022 - June 2023

Local District	Work Activities Related					
	Sanction Related			Work Supportive Services	Work Exemptions	
	Eligibility	Drug/ Alcohol	Work General		Disability Screening Exemptions	Other Work Exemptions
New York State	52	5	21	207	3	0
New York City	49	1	4	207	2	0
Rest of State	3	4	17	0	1	0
Albany	0	0	0	0	0	0
Allegany	0	0	0	0	0	0
Broome	0	0	1	0	0	0
Cattaraugus	0	0	0	0	0	0
Cayuga	0	0	0	0	0	0
Chautauqua	0	0	0	0	0	0
Chemung	0	0	0	0	0	0
Chenango	0	0	0	0	0	0
Clinton	0	0	0	0	0	0
Columbia	0	0	1	0	0	0
Cortland	0	0	0	0	0	0
Delaware	0	0	0	0	0	0
Dutchess	0	0	1	0	0	0
Erie	0	0	2	0	0	0
Essex	0	0	0	0	0	0
Franklin	0	0	0	0	0	0
Fulton	0	0	0	0	0	0
Genesee	0	0	0	0	0	0
Greene	0	0	0	0	0	0
Hamilton	0	0	0	0	0	0
Herkimer	0	1	0	0	0	0
Jefferson	0	0	0	0	0	0
Lewis	0	0	0	0	0	0
Livingston	0	0	1	0	0	0
Madison	0	0	0	0	0	0
Monroe	2	3	0	0	0	0
Montgomery	0	0	0	0	0	0
Nassau	0	0	1	0	1	0
Niagara	0	0	2	0	0	0
Oneida	0	0	2	0	0	0
Onondaga	1	0	1	0	0	0
Ontario	0	0	0	0	0	0
Orange	0	0	0	0	0	0
Orleans	0	0	0	0	0	0
Oswego	0	0	0	0	0	0
Otsego	0	0	0	0	0	0
Putnam	0	0	0	0	0	0
Rensselaer	0	0	2	0	0	0
Rockland	0	0	0	0	0	0
St. Lawrence	0	0	1	0	0	0
Saratoga	0	0	1	0	0	0
Schenectady	0	0	0	0	0	0
Schoharie	0	0	0	0	0	0
Schuyler	0	0	0	0	0	0
Seneca	0	0	0	0	0	0
Steuben	0	0	0	0	0	0
Suffolk	0	0	0	0	0	0
Sullivan	0	0	0	0	0	0
Tioga	0	0	0	0	0	0
Tompkins	0	0	0	0	0	0
Ulster	0	0	0	0	0	0
Warren	0	0	0	0	0	0
Washington	0	0	0	0	0	0
Wayne	0	0	0	0	0	0
Westchester	0	0	0	0	0	0
Wyoming	0	0	0	0	0	0
Yates	0	0	1	0	0	0

**Table 35: Administrative Hearings - Issues Withdrawn
Total Public Assistance
July 2022 - June 2023**

Local District	Work Activities Related					
	Sanction Related			Work Supportive Services	Work Exemptions	
	Eligibility	Drug/ Alcohol	Work General		Disability Screening Exemptions	Other Work Exemptions
New York State	5	14	21	116	8	0
New York City	4	1	6	115	1	0
Rest of State	1	13	15	1	7	0
Albany	0	0	1	0	0	0
Allegany	0	0	0	0	0	0
Broome	1	0	0	0	0	0
Cattaraugus	0	0	0	0	0	0
Cayuga	0	0	0	0	1	0
Chautauqua	0	0	0	0	0	0
Chemung	0	0	0	0	0	0
Chenango	0	0	0	0	0	0
Clinton	0	0	0	0	0	0
Columbia	0	0	0	0	0	0
Cortland	0	0	0	0	0	0
Delaware	0	0	0	0	0	0
Dutchess	0	0	1	0	0	0
Erie	0	0	0	0	0	0
Essex	0	0	0	0	0	0
Franklin	0	0	0	0	0	0
Fulton	0	0	0	0	0	0
Genesee	0	0	0	0	0	0
Greene	0	0	0	0	0	0
Hamilton	0	0	0	0	0	0
Herkimer	0	0	0	0	0	0
Jefferson	0	1	0	0	0	0
Lewis	0	0	0	0	0	0
Livingston	0	0	0	0	0	0
Madison	0	0	0	0	0	0
Monroe	0	6	4	1	1	0
Montgomery	0	0	0	0	0	0
Nassau	0	0	0	0	1	0
Niagara	0	1	0	0	0	0
Oneida	0	2	1	0	0	0
Onondaga	0	0	2	0	2	0
Ontario	0	0	0	0	0	0
Orange	0	1	1	0	0	0
Orleans	0	0	0	0	0	0
Oswego	0	0	0	0	0	0
Otsego	0	0	0	0	0	0
Putnam	0	0	0	0	0	0
Rensselaer	0	0	0	0	0	0
Rockland	0	0	0	0	0	0
St. Lawrence	0	0	0	0	0	0
Saratoga	0	0	0	0	0	0
Schenectady	0	1	0	0	0	0
Schoharie	0	0	0	0	0	0
Schuyler	0	0	0	0	0	0
Seneca	0	0	0	0	0	0
Steuben	0	0	0	0	0	0
Suffolk	0	1	3	0	2	0
Sullivan	0	0	0	0	0	0
Tioga	0	0	0	0	0	0
Tompkins	0	0	0	0	0	0
Ulster	0	0	0	0	0	0
Warren	0	0	1	0	0	0
Washington	0	0	0	0	0	0
Wayne	0	0	0	0	0	0
Westchester	0	0	1	0	0	0
Wyoming	0	0	0	0	0	0
Yates	0	0	0	0	0	0

**Table 36: Administrative Hearings - Agency Correct When Made
Total Public Assistance
July 2022 - June 2023**

Local District	Work Activities Related					
	Sanction Related			Work Supportive Services	Work Exemptions	
	Eligibility	Drug/ Alcohol	Work General		Disability Screening Exemptions	Other Work Exemptions
New York State	2	6	17	4	0	0
New York City	2	0	0	4	0	0
Rest of State	0	6	17	0	0	0
Albany	0	0	0	0	0	0
Allegany	0	0	0	0	0	0
Broome	0	0	1	0	0	0
Cattaraugus	0	0	1	0	0	0
Cayuga	0	0	0	0	0	0
Chautauqua	0	0	0	0	0	0
Chemung	0	0	0	0	0	0
Chenango	0	0	0	0	0	0
Clinton	0	0	1	0	0	0
Columbia	0	0	0	0	0	0
Cortland	0	0	0	0	0	0
Delaware	0	0	0	0	0	0
Dutchess	0	0	1	0	0	0
Erie	0	0	3	0	0	0
Essex	0	0	0	0	0	0
Franklin	0	0	0	0	0	0
Fulton	0	0	0	0	0	0
Genesee	0	0	0	0	0	0
Greene	0	0	0	0	0	0
Hamilton	0	0	0	0	0	0
Herkimer	0	0	1	0	0	0
Jefferson	0	1	0	0	0	0
Lewis	0	0	0	0	0	0
Livingston	0	0	0	0	0	0
Madison	0	0	0	0	0	0
Monroe	0	4	1	0	0	0
Montgomery	0	0	0	0	0	0
Nassau	0	0	2	0	0	0
Niagara	0	0	0	0	0	0
Oneida	0	0	1	0	0	0
Onondaga	0	0	0	0	0	0
Ontario	0	0	0	0	0	0
Orange	0	0	0	0	0	0
Orleans	0	0	0	0	0	0
Oswego	0	0	0	0	0	0
Otsego	0	0	0	0	0	0
Putnam	0	0	0	0	0	0
Rensselaer	0	0	0	0	0	0
Rockland	0	0	0	0	0	0
St. Lawrence	0	0	1	0	0	0
Saratoga	0	0	0	0	0	0
Schenectady	0	1	0	0	0	0
Schoharie	0	0	0	0	0	0
Schuyler	0	0	0	0	0	0
Seneca	0	0	0	0	0	0
Steuben	0	0	0	0	0	0
Suffolk	0	0	3	0	0	0
Sullivan	0	0	1	0	0	0
Tioga	0	0	0	0	0	0
Tompkins	0	0	0	0	0	0
Ulster	0	0	0	0	0	0
Warren	0	0	0	0	0	0
Washington	0	0	0	0	0	0
Wayne	0	0	0	0	0	0
Westchester	0	0	0	0	0	0
Wyoming	0	0	0	0	0	0
Yates	0	0	0	0	0	0

Table 37: Administrative Hearings - Agency Settled
Total Public Assistance
July 2022 - June 2023

Local District	Work Activities Related					
	Sanction Related			Work Supportive Services	Work Exemptions	
	Eligibility	Drug/ Alcohol	Work General		Disability Screening Exemptions	Other Work Exemptions
New York State	195	52	45	73	22	0
New York City	177	0	8	68	7	0
Rest of State	18	52	37	5	15	0
Albany	0	0	0	0	0	0
Allegany	0	0	0	0	0	0
Broome	0	0	0	0	0	0
Cattaraugus	0	0	0	0	0	0
Cayuga	0	0	0	0	0	0
Chautauqua	1	0	0	0	0	0
Chemung	0	0	0	0	0	0
Chenango	0	0	0	0	0	0
Clinton	0	0	0	0	0	0
Columbia	0	0	0	0	0	0
Cortland	0	0	0	0	0	0
Delaware	0	0	0	0	0	0
Dutchess	0	0	0	0	0	0
Erie	0	0	1	0	0	0
Essex	0	0	0	0	0	0
Franklin	0	0	0	0	0	0
Fulton	0	0	0	0	0	0
Genesee	0	0	0	0	0	0
Greene	0	0	0	0	0	0
Hamilton	0	0	0	0	0	0
Herkimer	0	0	0	0	0	0
Jefferson	0	0	0	0	0	0
Lewis	0	0	0	0	0	0
Livingston	0	0	0	0	0	0
Madison	0	0	0	0	0	0
Monroe	16	32	6	5	7	0
Montgomery	0	0	0	0	0	0
Nassau	0	0	0	0	0	0
Niagara	0	20	23	0	6	0
Oneida	0	0	0	0	0	0
Onondaga	1	0	2	0	0	0
Ontario	0	0	0	0	0	0
Orange	0	0	0	0	0	0
Orleans	0	0	0	0	0	0
Oswego	0	0	5	0	0	0
Otsego	0	0	0	0	0	0
Putnam	0	0	0	0	0	0
Rensselaer	0	0	0	0	0	0
Rockland	0	0	0	0	0	0
St. Lawrence	0	0	0	0	0	0
Saratoga	0	0	0	0	0	0
Schenectady	0	0	0	0	0	0
Schoharie	0	0	0	0	0	0
Schuyler	0	0	0	0	0	0
Seneca	0	0	0	0	0	0
Steuben	0	0	0	0	0	0
Suffolk	0	0	0	0	1	0
Sullivan	0	0	0	0	0	0
Tioga	0	0	0	0	0	0
Tompkins	0	0	0	0	0	0
Ulster	0	0	0	0	0	0
Warren	0	0	0	0	0	0
Washington	0	0	0	0	0	0
Wayne	0	0	0	0	0	0
Westchester	0	0	0	0	1	0
Wyoming	0	0	0	0	0	0
Yates	0	0	0	0	0	0

Table 38: Administrative Hearings - Other Disposition
Total Public Assistance
July 2022 - June 2023

Local District	Work Activities Related					
	Sanction Related			Work Supportive Services	Work Exemptions	
	Eligibility	Drug/ Alcohol	Work General		Disability Screening Exemptions	Other Work Exemptions
New York State	7	1	17	63	4	3
New York City	5	1	7	62	2	2
Rest of State	2	0	10	1	2	1
Albany	0	0	0	0	0	0
Allegany	0	0	0	0	0	0
Broome	0	0	0	0	0	0
Cattaraugus	0	0	0	0	0	0
Cayuga	0	0	0	0	0	0
Chautauqua	0	0	0	0	0	0
Chemung	0	0	0	0	0	0
Chenango	0	0	0	0	0	0
Clinton	0	0	0	0	0	0
Columbia	0	0	0	0	0	0
Cortland	0	0	0	0	0	0
Delaware	0	0	0	0	0	0
Dutchess	0	0	1	0	2	0
Erie	0	0	0	0	0	0
Essex	0	0	0	0	0	0
Franklin	0	0	0	0	0	0
Fulton	0	0	0	0	0	0
Genesee	0	0	0	0	0	0
Greene	0	0	0	0	0	0
Hamilton	0	0	0	0	0	0
Herkimer	0	0	0	0	0	0
Jefferson	0	0	1	0	0	0
Lewis	0	0	0	0	0	0
Livingston	0	0	0	0	0	0
Madison	0	0	0	0	0	0
Monroe	1	0	0	0	0	0
Montgomery	0	0	0	0	0	0
Nassau	0	0	0	0	0	0
Niagara	0	0	2	0	0	0
Oneida	0	0	0	0	0	0
Onondaga	0	0	2	0	0	1
Ontario	0	0	0	0	0	0
Orange	0	0	0	1	0	0
Orleans	0	0	0	0	0	0
Oswego	0	0	0	0	0	0
Otsego	0	0	0	0	0	0
Putnam	0	0	1	0	0	0
Rensselaer	0	0	0	0	0	0
Rockland	0	0	0	0	0	0
St. Lawrence	0	0	0	0	0	0
Saratoga	0	0	0	0	0	0
Schenectady	0	0	1	0	0	0
Schoharie	0	0	0	0	0	0
Schuyler	0	0	0	0	0	0
Seneca	0	0	0	0	0	0
Steuben	0	0	0	0	0	0
Suffolk	0	0	1	0	0	0
Sullivan	0	0	0	0	0	0
Tioga	0	0	0	0	0	0
Tompkins	0	0	0	0	0	0
Ulster	0	0	1	0	0	0
Warren	0	0	0	0	0	0
Washington	0	0	0	0	0	0
Wayne	0	0	0	0	0	0
Westchester	1	0	0	0	0	0
Wyoming	0	0	0	0	0	0
Yates	0	0	0	0	0	0

**Table 39: Administrative Disqualification Hearings
Eligibility Hearings Requested and Dispositions
July 2022 - June 2023**

Local District	Hearings Requested	Hearings Held	Issues Affirmed	Issues Reversed	Issues Withdrawn	Agency Correct When Made	Agency Settled	Other Disposition
New York State	123	1	1	0	0	0	0	0
New York City	35	0	0	0	0	0	0	0
Rest of State	88	1	1	0	0	0	0	0
Albany	0	0	0	0	0	0	0	0
Allegany	0	0	0	0	0	0	0	0
Broome	0	0	0	0	0	0	0	0
Cattaraugus	0	0	0	0	0	0	0	0
Cayuga	0	0	0	0	0	0	0	0
Chautauqua	0	0	0	0	0	0	0	0
Chemung	0	0	0	0	0	0	0	0
Chenango	0	0	0	0	0	0	0	0
Clinton	0	0	0	0	0	0	0	0
Columbia	0	0	0	0	0	0	0	0
Cortland	0	0	0	0	0	0	0	0
Delaware	0	0	0	0	0	0	0	0
Dutchess	4	0	0	0	0	0	0	0
Erie	56	0	0	0	0	0	0	0
Essex	0	0	0	0	0	0	0	0
Franklin	0	0	0	0	0	0	0	0
Fulton	0	0	0	0	0	0	0	0
Genesee	0	0	0	0	0	0	0	0
Greene	0	0	0	0	0	0	0	0
Hamilton	0	0	0	0	0	0	0	0
Herkimer	0	0	0	0	0	0	0	0
Jefferson	0	0	0	0	0	0	0	0
Lewis	0	0	0	0	0	0	0	0
Livingston	0	0	0	0	0	0	0	0
Madison	0	0	0	0	0	0	0	0
Monroe	18	0	0	0	0	0	0	0
Montgomery	0	0	0	0	0	0	0	0
Nassau	4	0	0	0	0	0	0	0
Niagara	1	1	1	0	0	0	0	0
Oneida	0	0	0	0	0	0	0	0
Onondaga	0	0	0	0	0	0	0	0
Ontario	0	0	0	0	0	0	0	0
Orange	0	0	0	0	0	0	0	0
Orleans	0	0	0	0	0	0	0	0
Oswego	0	0	0	0	0	0	0	0
Otsego	0	0	0	0	0	0	0	0
Putnam	0	0	0	0	0	0	0	0
Rensselaer	0	0	0	0	0	0	0	0
Rockland	0	0	0	0	0	0	0	0
St. Lawrence	0	0	0	0	0	0	0	0
Saratoga	0	0	0	0	0	0	0	0
Schenectady	0	0	0	0	0	0	0	0
Schoharie	0	0	0	0	0	0	0	0
Schuyler	0	0	0	0	0	0	0	0
Seneca	0	0	0	0	0	0	0	0
Steuben	0	0	0	0	0	0	0	0
Suffolk	5	0	0	0	0	0	0	0
Sullivan	0	0	0	0	0	0	0	0
Tioga	0	0	0	0	0	0	0	0
Tompkins	0	0	0	0	0	0	0	0
Ulster	0	0	0	0	0	0	0	0
Warren	0	0	0	0	0	0	0	0
Washington	0	0	0	0	0	0	0	0
Wayne	0	0	0	0	0	0	0	0
Westchester	0	0	0	0	0	0	0	0
Wyoming	0	0	0	0	0	0	0	0
Yates	0	0	0	0	0	0	0	0

Section (g)

Case Closings

- See Section (b) for Closings and Transfers
- See Section (c) for Children Receiving Subsidized Child Care

Section (g) Referral Note

Data available to meet the remaining requirements of this section were reported in Sections (b) and (c).

Section (h)

Substance Use Disorder Programs

- Number of recipients served
- Duration of stay in residential treatment

**Table 40: Monthly Average
Number of Public Assistance Recipients in a
Congregate Care Level II Drug/Alcohol Treatment Facility
July 2022 - June 2023**

Local District	Total Recipients	TANF	Safety Net MOE	Safety Net Non-MOE
New York State	3,681	46	16	3,619
New York City	1,713	8	5	1,699
Rest of State	1,968	38	11	1,920
Albany	101	1	2	99
Allegany	10	0	1	9
Broome	46	1	0	45
Cattaraugus	25	0	0	25
Cayuga	21	0	0	21
Chautauqua	52	0	1	51
Chemung	23	0	0	23
Chenango	3	0	0	3
Clinton	19	1	0	18
Columbia	13	1	0	12
Cortland	16	0	0	16
Delaware	2	1	0	1
Dutchess	61	1	0	60
Erie	207	4	2	201
Essex	2	0	0	2
Franklin	11	0	0	11
Fulton	16	0	0	15
Genesee	12	0	0	12
Greene	10	0	0	10
Hamilton	0	0	0	0
Herkimer	5	0	0	5
Jefferson	18	0	0	18
Lewis	1	0	0	1
Livingston	16	0	0	15
Madison	13	1	0	12
Monroe	224	4	1	219
Montgomery	8	0	0	8
Nassau	61	1	0	59
Niagara	58	1	0	57
Oneida	43	2	1	41
Onondaga	142	1	0	141
Ontario	18	0	0	18
Orange	82	1	1	80
Orleans	6	0	0	6
Oswego	24	0	0	24
Otsego	4	0	0	4
Putnam	4	0	0	4
Rensselaer	19	2	0	17
Rockland	46	0	0	46
St. Lawrence	17	0	0	17
Saratoga	28	1	0	27
Schenectady	52	0	0	52
Schoharie	2	0	0	2
Schuyler	3	0	0	3
Seneca	12	1	0	11
Steuben	37	1	1	36
Suffolk	160	4	1	156
Sullivan	24	0	0	24
Tioga	12	0	0	12
Tompkins	14	1	0	13
Ulster	31	0	0	31
Warren	21	1	0	20
Washington	12	1	0	11
Wayne	13	0	0	13
Westchester	85	4	1	81
Wyoming	3	0	0	2
Yates	3	0	0	3

**Table 41: Number of Recipients by Length of Initial Stay in a
Congregate Care Level II Drug/Alcohol Treatment Facility
July 2022 to December 2022 Entrants
Total Public Assistance**

Local District	1 Month	2 Months	3 Months	4 Months	5 Months	6 or More Months
New York State	314	327	319	341	232	1,605
New York City	70	85	91	154	93	859
Rest of State	244	242	228	187	139	746
Albany	6	2	8	3	9	27
Allegany	1	1	1	1	0	4
Broome	6	5	5	4	2	16
Cattaraugus	4	3	2	0	3	10
Cayuga	4	2	3	3	0	9
Chautauqua	12	7	6	5	3	17
Chemung	7	4	4	4	1	8
Chenango	0	2	0	2	1	0
Clinton	13	3	1	0	3	7
Columbia	2	0	0	1	0	10
Cortland	1	1	1	2	0	9
Delaware	1	0	0	0	0	3
Dutchess	9	9	6	4	0	31
Erie	24	34	33	21	11	76
Essex	0	0	0	1	1	0
Franklin	2	0	1	1	2	5
Fulton	2	1	0	1	1	9
Genesee	2	2	2	1	1	5
Greene	0	1	1	2	4	2
Hamilton	0	0	0	0	0	0
Herkimer	2	0	0	1	0	2
Jefferson	0	3	2	3	2	11
Lewis	0	0	1	0	1	0
Livingston	2	2	1	0	2	10
Madison	0	1	1	1	0	5
Monroe	17	22	27	29	16	90
Montgomery	0	2	1	1	3	3
Nassau	8	14	8	7	8	22
Niagara	13	14	14	9	4	22
Oneida	13	8	8	7	7	13
Onondaga	11	12	4	7	8	60
Ontario	6	8	3	1	0	7
Orange	1	5	7	3	4	24
Orleans	0	0	2	2	0	2
Oswego	2	3	1	3	0	9
Otsego	1	0	0	0	0	3
Putnam	0	0	1	1	0	1
Rensselaer	2	3	4	2	1	5
Rockland	2	1	0	1	6	15
St. Lawrence	2	2	5	2	2	5
Saratoga	1	1	7	1	2	10
Schenectady	3	5	6	6	2	25
Schoharie	0	0	0	0	1	1
Schuyler	2	0	0	0	0	0
Seneca	2	1	0	1	2	3
Steuben	3	2	4	2	0	12
Suffolk	29	26	21	25	15	50
Sullivan	0	2	4	3	1	6
Tioga	0	1	1	1	0	7
Tompkins	2	2	5	1	1	6
Ulster	3	1	1	1	1	14
Warren	5	5	3	1	3	5
Washington	1	4	2	1	1	4
Wayne	4	5	4	1	3	5
Westchester	10	6	2	6	1	40
Wyoming	1	1	3	1	0	0
Yates	0	3	1	0	0	1

This page intentionally left blank

Section (j)

***Disabled and Work Limited
Recipients***

- Number of disabled recipients – see Section (c) Subsidized Work Activities
- Number of administrative hearings – see Section (f) Sanctions

Section (j) Referral Note

Refer to Sections (c) and (f) for data required in this section.

Section (I)

Domestic Violence

- Number of persons screened indicating current danger
- Number of positive findings
- Number of persons with waivers and waivers granted during the year
- Number of waivers by category
- Duration of waivers

**Table 42: Domestic Violence
Summary Totals
July 2022 - June 2023**

Local District	Persons Indicating Current Danger	Persons for Whom Assessments Were Credible	Persons with Waivers	Persons with New Waivers Granted During the Year
New York State	9,454	6,630	7,788	6,545
New York City	5,478	4,023	4,741	3,985
Rest of State	3,976	2,607	3,047	2,560
Albany	24	24	29	23
Allegany	15	10	11	10
Broome	114	89	106	81
Cattaraugus	5	5	7	5
Cayuga	38	31	42	40
Chautauqua	166	30	33	27
Chemung	34	28	32	31
Chenango	3	3	5	2
Clinton	10	10	12	10
Columbia	16	16	32	16
Cortland	32	25	28	22
Delaware	17	10	15	15
Dutchess	68	68	86	69
Erie	928	842	916	877
Essex	7	7	7	7
Franklin	1	0	0	0
Fulton	0	0	0	0
Genesee	0	0	1	0
Greene	29	1	0	0
Hamilton	0	0	0	0
Herkimer	2	2	5	1
Jefferson	12	12	17	15
Lewis	3	3	7	3
Livingston	30	3	7	3
Madison	3	3	3	3
Monroe	69	52	78	51
Montgomery	9	9	14	11
Nassau	12	11	9	8
Niagara	259	32	32	25
Oneida	35	13	14	9
Onondaga	209	208	177	152
Ontario	49	49	72	63
Orange	116	116	151	109
Orleans	1	0	1	0
Oswego	154	86	108	84
Otsego	1	1	1	1
Putnam	0	0	0	0
Rensselaer	95	95	111	86
Rockland	17	17	24	17
St. Lawrence	30	30	38	30
Saratoga	1	1	1	1
Schenectady	147	83	115	79
Schoharie	5	5	6	3
Schuyler	2	2	2	2
Seneca	6	4	3	3
Steuben	112	49	53	45
Suffolk	622	186	206	183
Sullivan	14	11	18	11
Tioga	14	14	18	14
Tompkins	3	3	2	2
Ulster	0	0	0	0
Warren	21	13	12	9
Washington	69	14	15	14
Wayne	84	28	31	28
Westchester	244	236	315	243
Wyoming	0	0	0	0
Yates	19	17	19	17

Table 43: Domestic Violence
Total Number of Active Waivers by Waiver Type
July 2022 - June 2023

Local District	Total Waivers	Child Support	Employment	Drug/ Alcohol	Time Limits	Alien Deeming	Residency	Minor Parent	Other
New York State	15,551	10,673	4,359	71	7	14	0	9	418
New York City	8,639	7,223	1,405	4	2	0	0	1	4
Rest of State	6,912	3,450	2,954	67	5	14	0	8	414
Albany	33	28	4	0	0	0	0	0	1
Allegany	18	7	7	1	0	0	0	1	2
Broome	167	121	45	1	0	0	0	0	0
Cattaraugus	14	2	8	1	0	0	0	0	3
Cayuga	99	69	30	0	0	0	0	0	0
Chautauqua	49	17	25	3	1	1	0	0	2
Chemung	62	17	35	8	1	0	0	0	1
Chenango	6	5	1	0	0	0	0	0	0
Clinton	23	9	11	2	1	0	0	0	0
Columbia	55	22	27	3	0	0	0	0	3
Cortland	42	32	7	3	0	0	0	0	0
Delaware	34	8	24	2	0	0	0	0	0
Dutchess	171	86	48	0	0	0	0	0	37
Erie	2,445	1,043	1,366	0	0	0	0	0	36
Essex	14	5	9	0	0	0	0	0	0
Franklin	0	0	0	0	0	0	0	0	0
Fulton	0	0	0	0	0	0	0	0	0
Genesee	2	1	1	0	0	0	0	0	0
Greene	0	0	0	0	0	0	0	0	0
Hamilton	0	0	0	0	0	0	0	0	0
Herkimer	9	2	5	2	0	0	0	0	0
Jefferson	44	14	29	0	0	0	0	0	1
Lewis	10	6	1	1	0	1	0	0	1
Livingston	7	6	1	0	0	0	0	0	0
Madison	5	0	4	1	0	0	0	0	0
Monroe	96	89	4	2	0	0	0	1	0
Montgomery	20	10	10	0	0	0	0	0	0
Nassau	13	8	3	0	0	1	0	0	1
Niagara	40	22	7	0	0	2	0	0	9
Oneida	17	11	6	0	0	0	0	0	0
Onondaga	420	302	94	1	0	0	0	0	23
Ontario	204	65	103	6	0	0	0	0	30
Orange	387	191	142	1	0	2	0	1	50
Orleans	2	0	1	1	0	0	0	0	0
Oswego	187	102	60	11	0	1	0	1	12
Otsego	1	1	0	0	0	0	0	0	0
Putnam	0	0	0	0	0	0	0	0	0
Rensselaer	227	123	78	3	0	1	0	0	22
Rockland	34	18	12	0	0	1	0	2	1
St. Lawrence	77	41	31	3	1	0	0	0	1
Saratoga	1	0	1	0	0	0	0	0	0
Schenectady	263	129	93	3	0	0	0	0	38
Schoharie	8	4	4	0	0	0	0	0	0
Schuyler	5	2	3	0	0	0	0	0	0
Seneca	4	1	3	0	0	0	0	0	0
Steuben	89	69	20	0	0	0	0	0	0
Suffolk	756	327	407	0	0	0	0	0	22
Sullivan	31	19	6	0	0	0	0	0	6
Tioga	32	4	21	5	1	0	0	0	1
Tompkins	6	1	3	1	0	0	0	1	0
Ulster	0	0	0	0	0	0	0	0	0
Warren	16	13	1	0	0	0	0	0	2
Washington	20	17	3	0	0	0	0	0	0
Wayne	42	24	7	0	0	3	0	0	8
Westchester	577	345	130	0	0	1	0	0	101
Wyoming	0	0	0	0	0	0	0	0	0
Yates	28	12	13	2	0	0	0	1	0

**Table 44: Domestic Violence
Average Duration of Active Waivers by Waiver Type (In Months)
July 2022 - June 2023**

Local District	Total Average Months	Child Support	Employment	Drug/ Alcohol	Time Limits	Alien Deeming	Residency	Minor Parent	Other
New York State	5	5	5	6	4	5	0	5	5
New York City	6	6	6	6	5	0	0	6	3
Rest of State	5	5	5	7	3	5	0	5	5
Albany	9	4	47	0	0	0	0	0	4
Allegany	5	4	5	6	0	0	0	6	6
Broome	4	4	4	3	0	0	0	0	0
Cattaraugus	13	5	17	6	0	0	0	0	10
Cayuga	5	4	5	0	0	0	0	0	0
Chautauqua	5	4	5	7	6	2	0	0	3
Chemung	5	5	5	3	0	0	0	0	6
Chenango	4	4	2	0	0	0	0	0	0
Clinton	5	4	5	6	4	0	0	0	0
Columbia	12	11	10	50	0	0	0	0	7
Cortland	5	5	3	6	0	0	0	0	0
Delaware	5	5	5	6	0	0	0	0	0
Dutchess	6	6	5	0	0	0	0	0	5
Erie	4	4	4	0	0	0	0	0	8
Essex	5	4	5	0	0	0	0	0	0
Franklin	0	0	0	0	0	0	0	0	0
Fulton	0	0	0	0	0	0	0	0	0
Genesee	6	6	6	0	0	0	0	0	0
Greene	0	0	0	0	0	0	0	0	0
Hamilton	0	0	0	0	0	0	0	0	0
Herkimer	4	4	4	4	0	0	0	0	0
Jefferson	5	5	5	0	0	0	0	0	6
Lewis	6	6	6	6	0	6	0	0	6
Livingston	5	5	3	0	0	0	0	0	0
Madison	4	0	3	4	0	0	0	0	0
Monroe	5	5	4	5	0	0	0	6	0
Montgomery	5	5	5	0	0	0	0	0	0
Nassau	14	22	4	0	0	3	0	0	2
Niagara	5	4	4	0	0	5	0	0	6
Oneida	5	5	6	0	0	0	0	0	0
Onondaga	5	5	5	6	0	0	0	0	4
Ontario	3	3	3	3	0	0	0	0	3
Orange	7	7	7	6	0	4	0	5	6
Orleans	6	0	6	6	0	0	0	0	0
Oswego	5	5	5	5	0	5	0	5	5
Otsego	2	2	0	0	0	0	0	0	0
Putnam	0	0	0	0	0	0	0	0	0
Rensselaer	5	5	5	4	0	6	0	0	5
Rockland	5	5	5	0	0	6	0	4	6
St. Lawrence	5	5	5	2	1	0	0	0	6
Saratoga	5	0	5	0	0	0	0	0	0
Schenectady	5	5	5	5	0	0	0	0	5
Schoharie	7	5	8	0	0	0	0	0	0
Schuyler	1	1	1	0	0	0	0	0	0
Seneca	4	4	4	0	0	0	0	0	0
Steuben	5	5	5	0	0	0	0	0	0
Suffolk	3	3	3	0	0	0	0	0	4
Sullivan	4	4	4	0	0	0	0	0	5
Tioga	4	4	4	4	4	0	0	0	4
Tompkins	4	4	4	4	0	0	0	4	0
Ulster	0	0	0	0	0	0	0	0	0
Warren	4	4	4	0	0	0	0	0	3
Washington	4	4	6	0	0	0	0	0	0
Wayne	3	3	3	0	0	3	0	0	3
Westchester	6	5	7	0	0	12	0	0	5
Wyoming	0	0	0	0	0	0	0	0	0
Yates	5	5	5	4	0	0	0	4	0

Appendix A

Welfare Reform Act of 1997 Reporting Provisions

(Section 149 of Part B of Chapter 436 of the Laws of 1997)

1. The department of social services or its successor agencies and the department of labor shall collect data related to the operation of public assistance programs including, but not limited to, information that must be submitted to the department of health and human services pursuant to the personal responsibility and work opportunities reconciliation act of 1996 (P.L. 104-193) and any other provision of federal or state law or regulations governing programs administered under title iv-a of the social security act or the social services law. Social services districts shall assist each agency in accumulating such data in accordance with instructions from the appropriate agency.
2. Each agency shall make reasonable efforts to collect and maintain the data required pursuant to this subdivision. Data collection shall begin as soon as practicable, but in no case later than upon the completion of the redesign of the welfare management system and the completion of welfare to work caseload management system. The responsible agency shall collect the data related to applicants and recipients of public assistance programs established pursuant to the personal responsibility and work opportunities reconciliation act of 1996 (P.L. 104-193) and the social services law including, but not limited to, the following:
 - a. Data related to applicants seeking public assistance including but not limited to:
 1. Number of applicants accepted to participate in each program;
 2. Number of applicants who are denied public assistance and the reason for denial;
 3. Number of applicants who were previous recipients of public assistance on or after December 2, 1997 including length of time previously on assistance; reason for initial termination; length of time between termination and reapplication; and reason for reapplication; and
 4. Number of applicants who have resided in the state for fewer than twelve months at the time of application.
 - b. Data related to recipients of public assistance including but not limited to:
 1. Number of terminated recipients of public assistance and reason for termination; and
 2. Number of recipients that move between public assistance programs.
 - c. Data related to work activities subsidized or otherwise sponsored by the department of social services, its successor agencies, the department of labor, or social services districts including but not limited to:
 1. Number of recipients participating in work activities;
 2. Number of recipients receiving an exemption from participating in work activities;
 3. The duration of and reasons for such exemptions;
 4. Number of participants receiving subsidized child care and the number of exemptions granted due to lack of available child care;
 5. The type of work activities;
 6. Hours of work per week per recipient;
 7. Duration of enrollment in such work activity;
 8. Reason for termination from work activity;
 9. Number of requests for administrative hearings related to work activity participation including the nature of such requests by general categories and the outcome of such hearings;
 10. Number of participants receiving subsidized transportation services;
 11. Participant retention in work activities by type of work activity;
 12. Length of time before assignment to a work activity;
 13. Number of recipients changing work activity assignments and reasons for such changes; and

14. Expenditures by social services districts in support of work activities.
- d. Data related to unsubsidized work activities including but not limited to:
1. Number of recipients hired;
 2. Initial rate of pay by either annual salary or wage basis;
 3. Retention rates;
 4. Means of obtaining unsubsidized employment including, but not limited to referral by the social services district and direct contact with employer; and
 5. Number of participants receiving subsidized child care and/or transportation services.
- e. Data related to recipient training and education activities including but not limited to:
1. Number of recipients in training or educational activities by type of activity;
 2. Number of recipients mandated to attend training or education activities that fulfill work participation requirements;
 3. Length and duration of training or education activity including the number of hours per week and duration;
 4. Number of recipients receiving subsidized child care and/or transportation services;
 5. Number of recipients transferred to work activities;
 6. To the extent available, the number of recipients who obtain work directly from training or education activities including starting salary and employee retention rates; and
 7. Expenditures by social services districts in support of training and education activities.
- f. Data related to recipient sanctions including but not limited to:
1. Number of sanctions, by type of sanction;
 2. Number of sanctions with defined minimum period, by type of sanction;
 3. Average length of sanction until recipient compliance, by type of sanction;
 4. Amount of sanction, by type of sanction;
 5. Period of time starting on or after December 2, 1996 that the participant was in program prior to the sanction;
 6. Number and outcome of administrative hearings related to sanctions, by type of sanction; and
 7. Number of sanctions against the entire assistance unit.
- g. Data related to case closings including but not limited to:
1. Number of case closings;
 2. Reason for case closing including, but not limited to, self-termination without reason;
 3. Length of time receiving assistance on or after December 2, 1996 before case closing;
 4. On an aggregate basis, the length of time recipients do not receive public assistance in New York state following case closing occurring on or after December 2, 1996; and
 5. Number of former public assistance recipients receiving subsidized child care and/or transitional medical assistance.
- h. Data related to substance abuse treatment programs including but not limited to:
1. Number of recipients receiving substance abuse treatment services for which the cost of such services is paid for by the social services district using public assistance monies;
 2. Length of reimbursed recipient participation in treatment program; and
 3. Types of substance abuse treatment programs receiving reimbursement from social services districts.
- i. Data related to pregnancy prevention programs funded through federal monies received by the state pursuant to title iv-a of the social security act including but not limited to:
1. Number of program participants;
 2. Duration of program participation; and

3. Types of services provided.
- j. Data related to disabled and work limited recipients of public assistance pursuant to provisions of the welfare reform act of 1997 including, but not limited to:
 1. Number of persons applying for public assistance that are screened;
 2. Number of current recipients of public assistance screened;
 3. Number of persons applying for public assistance that are found to be disabled;
 4. Number of current recipients of public assistance found to be disabled;
 5. Number of persons applying for public assistance found to be work limited;
 6. Number of current recipients of public assistance found to be work limited;
 7. Duration of finding by category;
 8. Number of changes in work activity exemption status;
 9. Number and outcome of administrative hearings related to the disability screening and the determination of work activity exemptions; and
 10. Data relating to work and training and education activities pursuant to subsections c, d and e of this section.
 - k. Data related to the food assistance program including but not limited to:
 1. Number of applicants under eighteen years of age by chronological age;
 2. Number of applications denied by reason for denial;
 3. Number of recipients under eighteen years of age by chronological age and the average amount of food assistance benefits per recipient issued by the social services district;
 4. Number of recipients under eighteen years of age by case and by household and the average amount of food assistance benefits issued per case and per household by the social services district;
 5. Number of recipients under eighteen years of age in a case and/or in a household where other individuals in the case and/or household are in receipt of federal food stamp benefits and the average amounts of federal and state food stamp benefits issued per case and/or per household by social services district;
 6. Number of recipients under eighteen years of age in a case or household receiving other public assistance benefits and the average amounts of food assistance benefits issued per recipient and per public assistance case by the social services district;
 7. Number of case closings for cases where the recipient is under eighteen years of age by reason for case closing including but not limited to case closing as a result of naturalization;
 8. Number of applicants applying for food assistance benefits where the primary reason for potential eligibility is a disability as defined by provisions of this act establishing a food assistance program;
 9. Number of applications denied by reason for denial;
 10. Number of disabled recipients by chronological age and the average amount of food assistance benefits per recipient issued by the social services district;
 11. Number of disabled recipients by case and by household and the average amount of food assistance benefits issued per case and per household by the social services district;
 12. Number of disabled recipients in a case and/or in a household where other individuals in the case and/or household are in receipt of federal food stamp benefits and the average amounts of federal and state food stamp benefits issued per case and/or per household by social services district;
 13. Number of disabled recipients in a case or household receiving other public assistance benefits and the average amount of food assistance benefits issued per recipient and per public assistance case by the social services district including, but not limited to, receipt of federal and/or state supplemental payment made pursuant to title xvi of the social security act;
 14. Number of case closings for cases where the recipient is disabled by reason for termination including but not limited to case closing as a result of naturalization;

15. Number of applicants applying for food assistance benefits where the primary reason for potential eligibility is that the applicant is elderly as defined by provisions of this act establishing a food assistance program;
 16. Number of applications denied by reason for denial;
 17. Number of elderly recipients by chronological age and the amount of food assistance benefits per recipient issued by the social services district;
 18. Number of elderly recipients by case and by household and the average amount of food assistance benefits issued per case and per household by the social services district;
 19. Number of elderly recipients in a case and/or in a household where other individuals in the case and/or household are in receipt of federal food stamp benefits and the average amount of federal and state food stamp benefits issued per case and/or per household by the social services district;
 20. Number of elderly recipients in a case or household receiving other public assistance benefits and the average amount of food assistance benefits issued per recipient and per public assistance case by the social services district including, but not limited to, receipt of federal and/or state supplemental payment made pursuant to title xvi of the social security act;
 21. Number of case closings for cases where the recipient is elderly by reason for termination including but not limited to case closing as a result of naturalization; and
 22. Number and outcome of administrative hearings related to the food assistance program by general category.
- i. Data related to the domestic violence screening process including but not limited to:
1. Number of applicants and recipients screened;
 2. Number of positive findings;
 3. Number of waivers by category granted as a result of a positive finding; and
 4. Duration of such waiver.
3. To the extent possible, the data collection activities required by this act shall be designed to collect data in the least expensive and least time consuming manner possible. Scientifically acceptable statistical sampling methods may be used to collect and maintain data on an aggregate basis when authorized by the department of health and human services or when the commissioner of social services or commissioners of its successor agencies determines that collection of such data by any other means is not practicable or would result in significant additional costs. To the extent that statistical sampling is used to collect and maintain data, and unless otherwise required by the department of health and human services, the sample size shall be no larger than the sample size required by the United States department of agriculture for food stamp quality control purposes pursuant to the food stamp act of 1977 and subsequent amendments.
 4. The commissioner of social services or commissioners of its successor agencies, and the commissioner of labor shall provide reports summarizing data collected pursuant to this act to the temporary president of the senate, the chairperson of the senate finance committee, the speaker of the assembly, and the chairperson of the assembly ways and means committee. The first such report shall be provided to the temporary president of the senate, the chairperson of the senate finance committee, the speaker of the assembly, and the chairperson of the assembly ways and means committee no later than December 2, 1998 and annually thereafter. The commissioner of social services or the commissioners of its successor agencies, in conjunction with the commissioner of health and the commissioner of labor, shall provide the temporary president of the senate, the chairperson of the senate finance committee, the speaker of the assembly, and the chairperson of the assembly ways and means committee with an annual report summarizing data collected pursuant to this act.
 5. Each agency shall provide the temporary president of the senate, the chairperson of the senate finance committee, the speaker of the assembly, and the chairperson of the assembly ways and means committee with all reports filed with the department of health and human services pursuant to

the data collection and reporting requirements of the personal responsibility and work opportunities reconciliation act of 1996 (P.L. 104-193).

6. The commissioner of social services or the commissioners of its successor agencies, in conjunction with the commissioner of labor, and the commissioner of health shall develop a plan to provide the legislature with the ability to have online access to the welfare management system and the welfare to work caseload management system upon completion of the redesign of the welfare management system and implementation of the welfare to work caseload management system for purposes of obtaining aggregate program data. Such plan shall provide for security measures necessary to ensure the confidentiality of data residing on the welfare management system and the welfare to work caseload management system in conformance with all applicable federal and state laws and regulations. The plan shall be submitted to the temporary president of the senate and the speaker of the assembly no later than February 15, 1998.