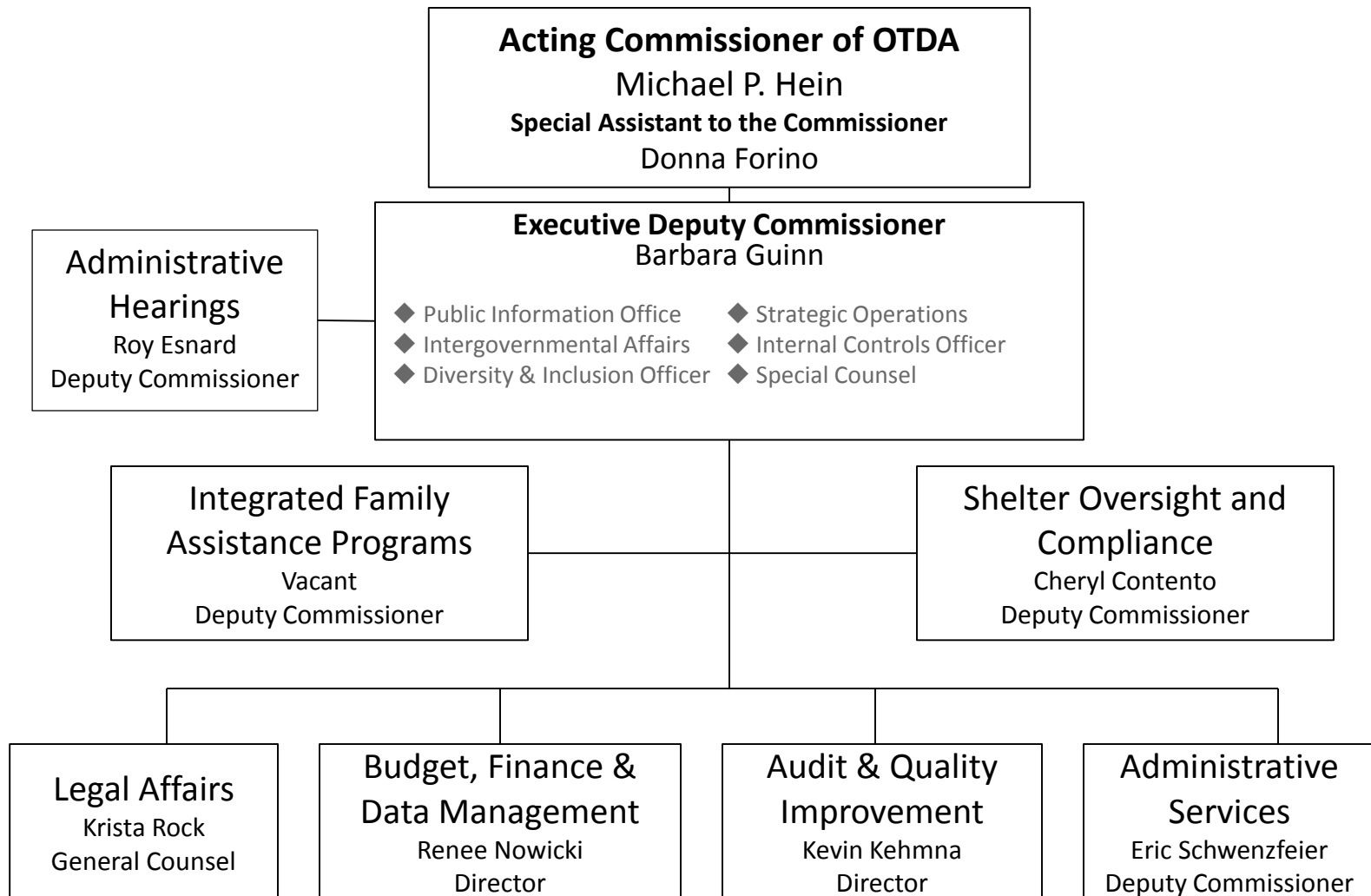




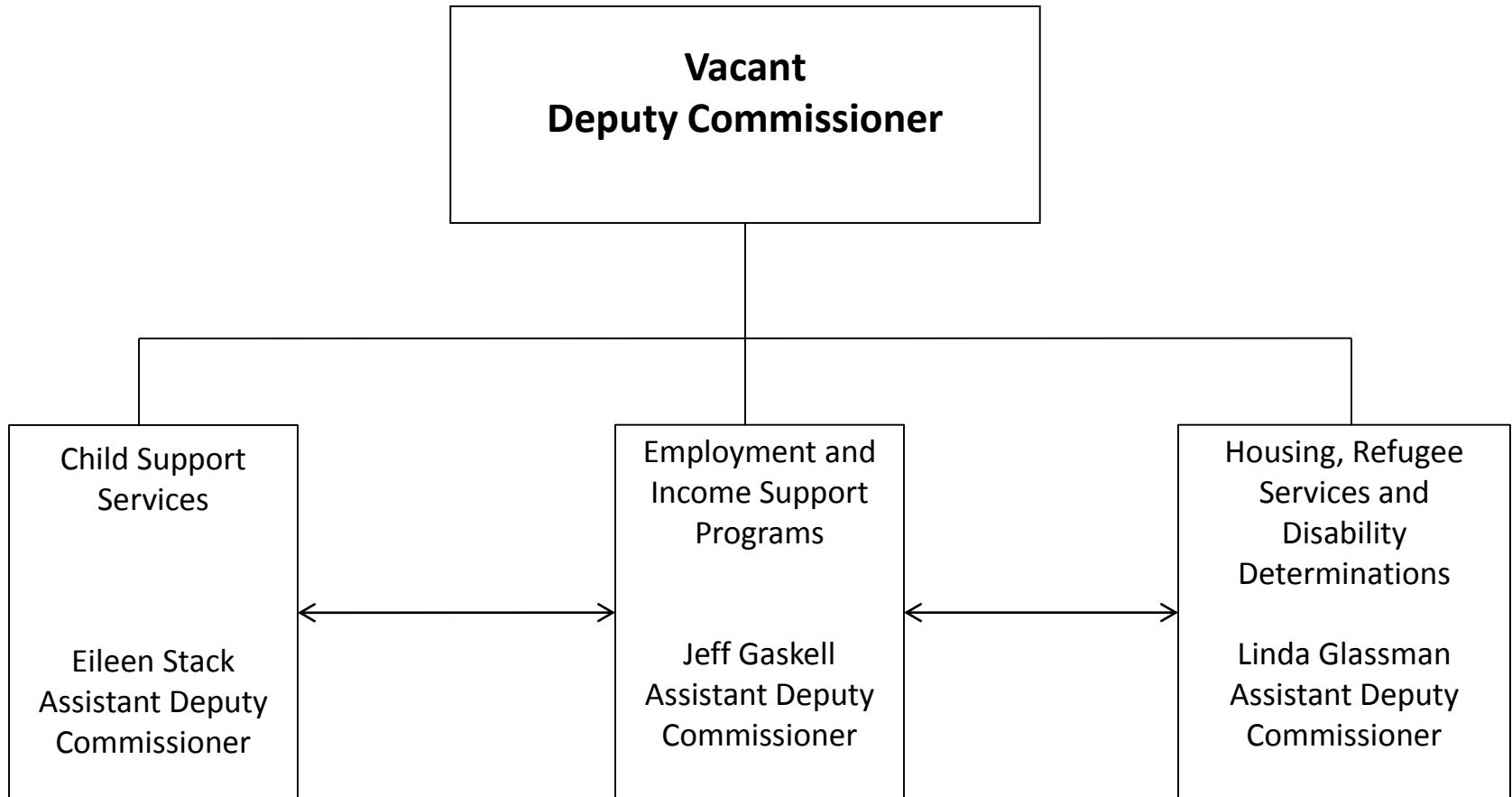
**Office of Temporary  
and Disability Assistance**

# Organization Charts

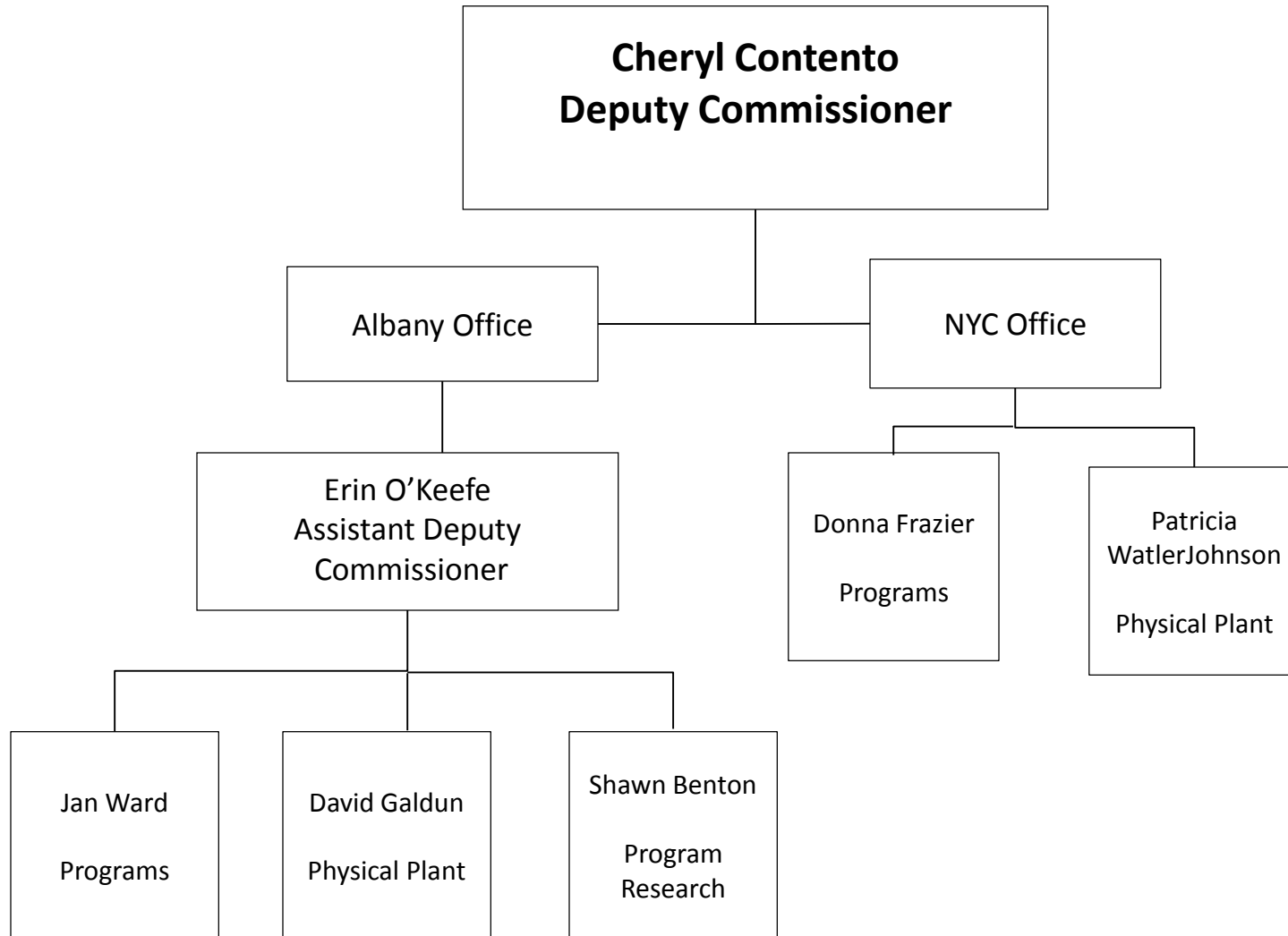
# Office of Temporary and Disability Assistance



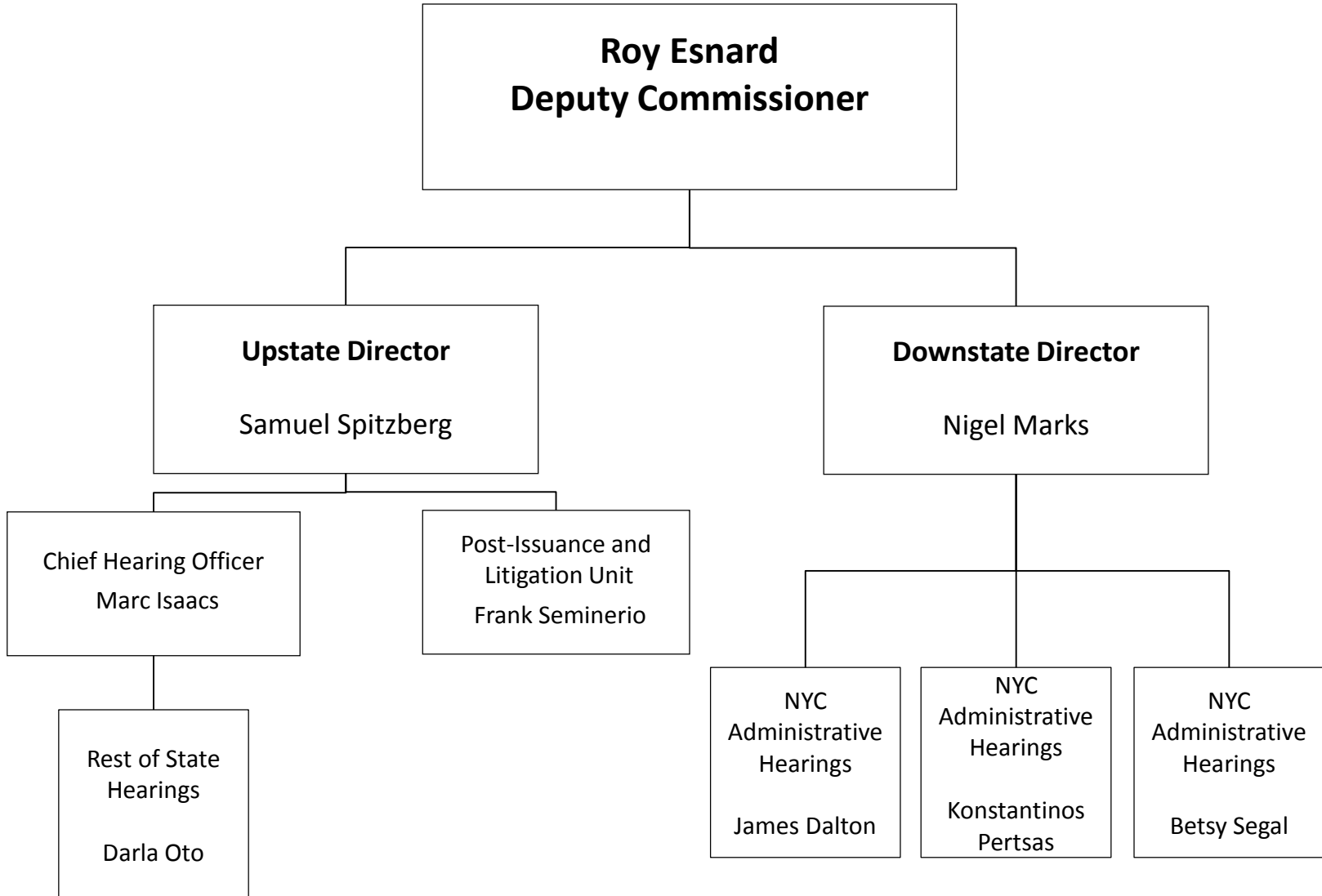
# Integrated Family Assistance Programs



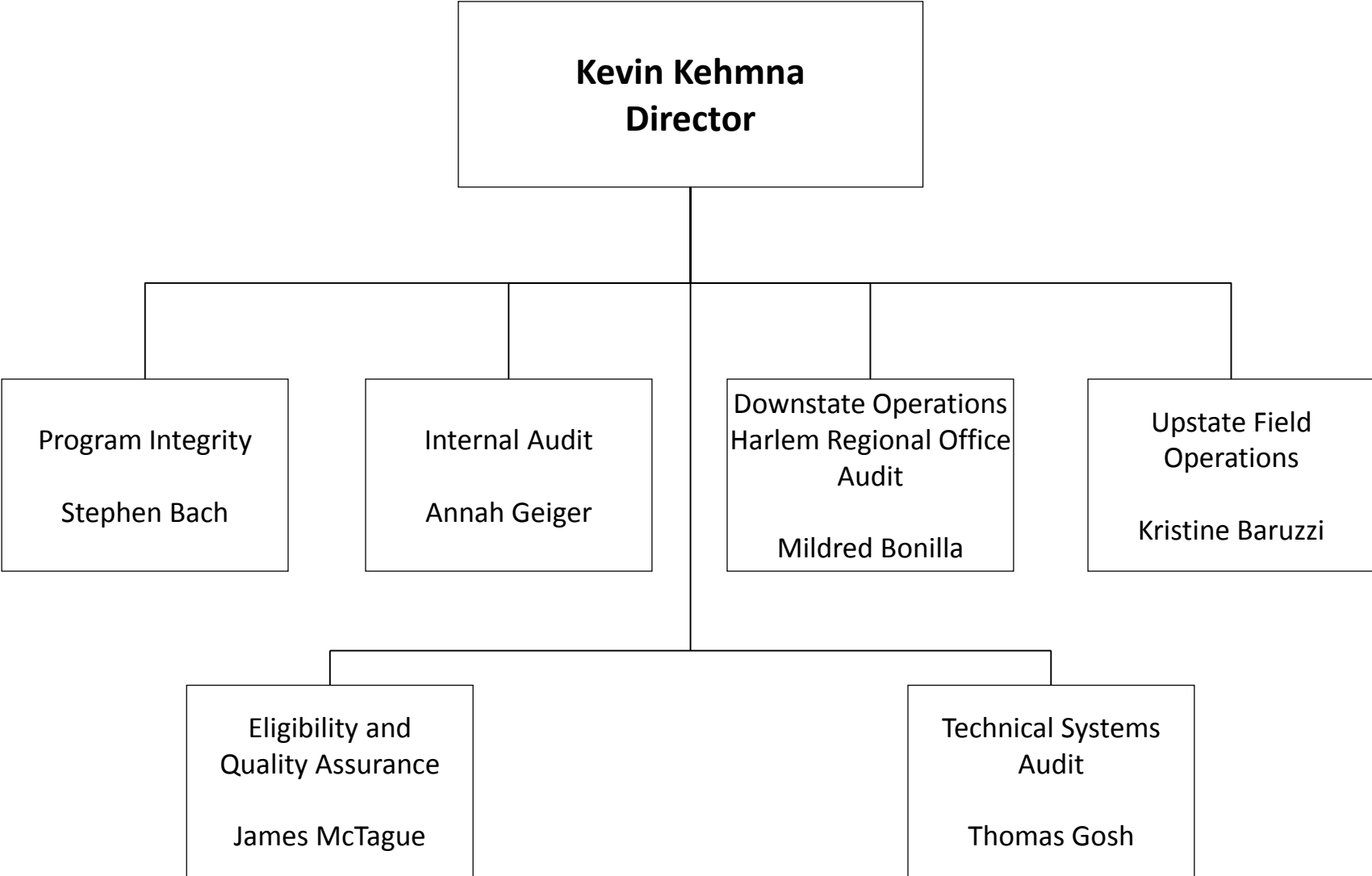
# Shelter Oversight and Compliance



# Administrative Hearings



# Audit and Quality Improvement



# Legal Affairs

**Krista Rock  
General Counsel**

Chief Deputy Counsel

Tiffinay Rutnik

Administrative and  
Management Support

Jeanine Behuniak

Shelter Services  
and FOIL

Douglas Goglia

Employment and IT  
Support

Kevin Hickey

Child Support and  
Homeless Housing  
Assistance Program

Brian Wootan

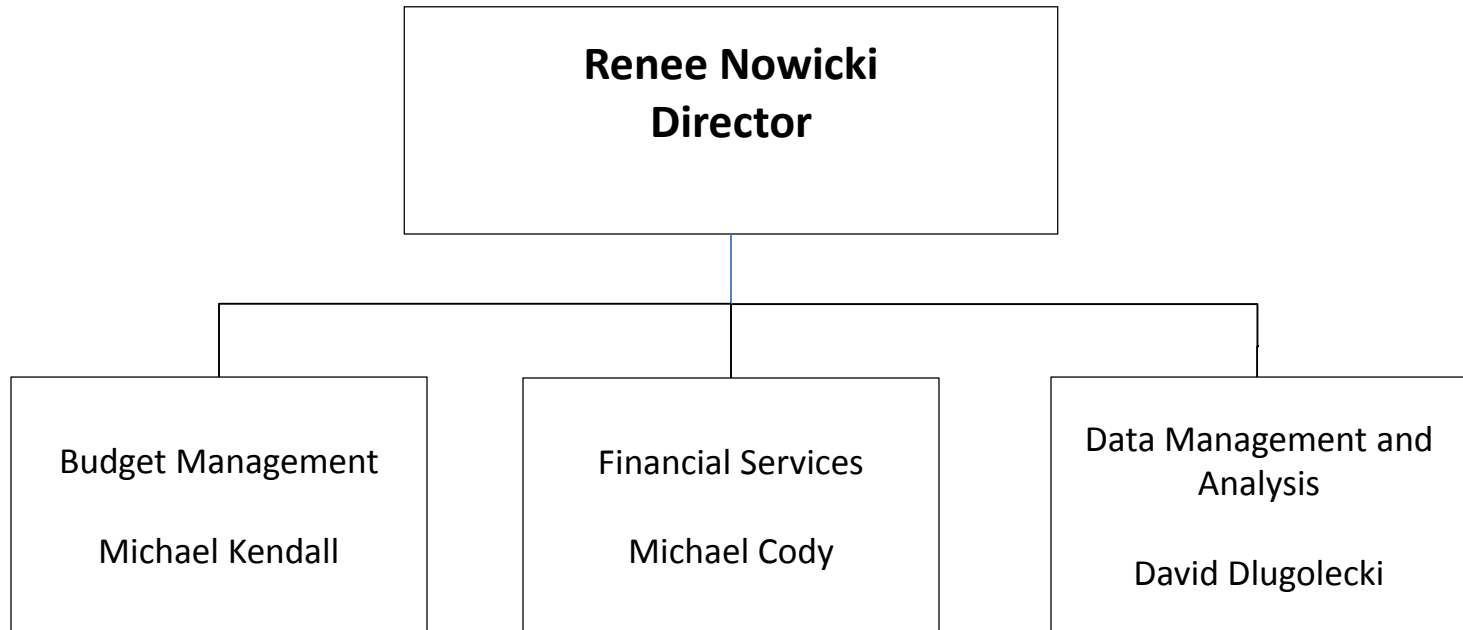
Economic and  
Non-Citizen Support

Malinka Gutierrez

Labor

Craig Crist

# Budget, Finance and Data Management





# Administrative Services

**Eric Schwenzfeier**  
**Deputy Commissioner**

**Management  
Services**

**Dawn  
Ballenberger**

**Human  
Resources**

**Jill Shadick**

**Equal Opportunity  
and Diversity/LEAN**

**Jessica Vaughn  
Tolle**

**Contract Management/  
Minority Women  
Business Enterprises**

**Christine Irvine/  
Wallis Howe-Rosenzweig**

**Training and  
Staff Development**

**Carlise Lovelady**