



NEW YORK STATE  
OFFICE OF TEMPORARY AND DISABILITY ASSISTANCE  
40 North Pearl Street, Albany, New York 12243-0001

George E. Pataki  
*Governor*

Brian J. Wing  
*Commissioner*

---

## Temporary and Disability Assistance Statistics January 2001

---

### Temporary Assistance

In January 2001, Temporary Assistance recipients totaled 736,613, decreasing 6,118 (-0.8%) from December 2000. Temporary Assistance expenditures totaled \$156,721,985 in January 2001, increasing \$1.0 million (+0.7%) over the previous month.

### Food Stamps

Recipients of Food Stamps numbered 1,328,554 in January 2001, decreasing 4,086 (-0.3%) from the previous month. Food Stamps expenditures totaled \$111,238,064 in January 2001, decreasing \$1.9 million (-1.7%) from December 2000.

### Supplemental Security Income

For January 2001, SSI recipients (including Mental Hygiene) totaled 618,215, decreasing only 704 from December 2000. SSI expenditures totaled \$278,600,833, in January 2001, increasing \$7.3 million (+2.7%) over the previous month.



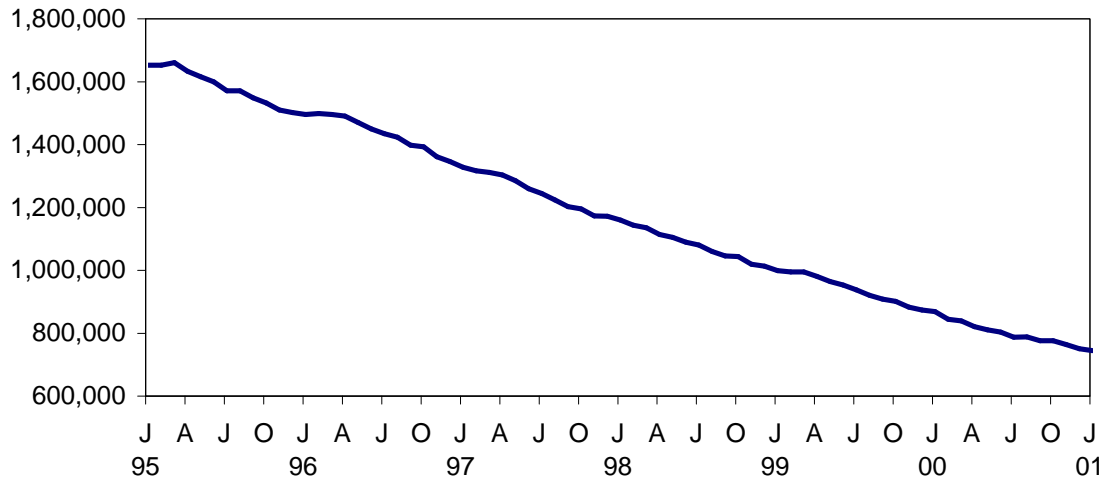
# Table of Contents

## Page Number

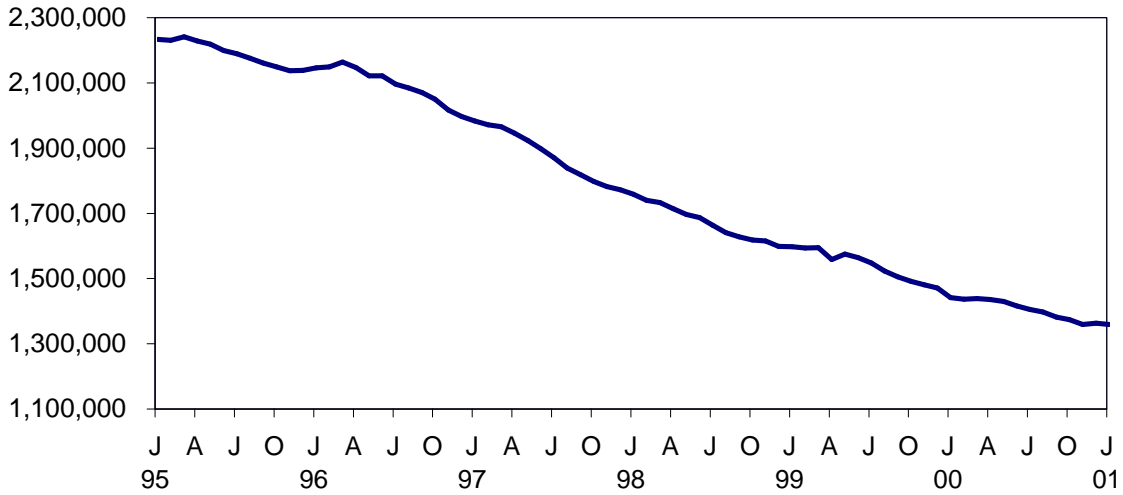
Graphs .....	4
Summary Tables.....	5
Temporary Assistance by Program Area .....	6
Temporary Assistance by Funding Source .....	10
Other Programs .....	18

# NEW YORK STATE JANUARY 1995 - JANUARY 2001

## TEMPORARY ASSISTANCE RECIPIENTS

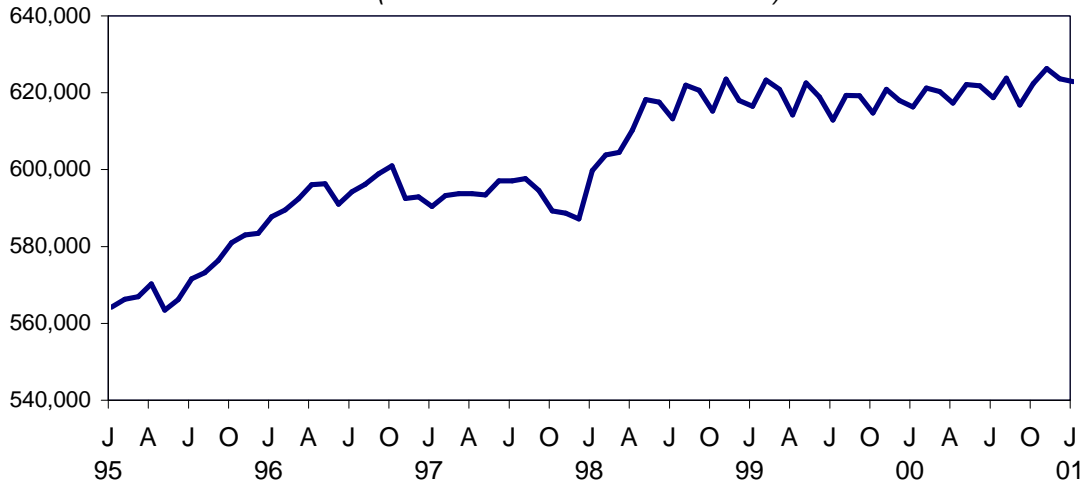


## FOOD STAMPS PERSONS



## SSI PERSONS

(INCLUDING MENTAL HYGIENE)



SELECTED SUMMARY PROGRAM DATA  
BY REGION

Table 1  
TEMPORARY AND DISABILITY ASSISTANCE CASES  
January 2001

Region	Cases				
	Temporary Assistance by Program			Supplemental Security Income	Food Stamps
	Total	Family Assistance	Safety Net Assistance		
New York State	344,210	230,751	113,459	607,640	665,313
New York City	251,480	167,147	84,333	392,110	433,069
Rest of State	92,730	63,604	29,126	215,530	232,244

Table 2  
TEMPORARY AND DISABILITY ASSISTANCE RECIPIENTS  
January 2001

Region	Recipients				
	Temporary Assistance by Program			Supplemental Security Income	Food Stamps
	Total	Family Assistance	Safety Net Assistance		
New York State	736,613	615,208	121,405	607,640	1,328,554
New York City	532,751	443,693	89,058	392,110	845,714
Rest of State	203,862	171,515	32,347	215,530	482,840

Table 3  
TEMPORARY AND DISABILITY ASSISTANCE EXPENDITURES  
January 2001

Region	Expenditures				
	Temporary Assistance by Program			Supplemental Security Income	Food Stamps
	Total	Family Assistance	Safety Net Assistance		
New York State	\$156,721,985	\$119,370,344	\$37,351,641	\$274,994,693	\$111,238,064
New York City	107,085,000	83,511,000	23,574,000	183,812,595	76,312,115
Rest of State	49,636,985	35,859,344	13,777,641	91,182,098	34,925,949

Note: SSI data listed here do not include Mental Hygiene data. See Tables 17 - 19 for total SSI data.

Table 4  
**TEMPORARY ASSISTANCE**  
 Year to Year Monthly Comparison by Local District  
 Cases, Recipients and Expenditures  
 January 2001

Local District	January 2001			January 2000			January 1999		
	Cases	Recipients	Expenditures	Cases	Recipients	Expenditures	Cases	Recipients	Expenditures
New York State	344,210	736,613	\$156,721,985	393,315	860,985	\$ 171,837,924	443,027	990,887	\$ 193,288,751
New York City*	251,480	532,751	107,085,000	286,694	622,128	118,457,000	318,787	703,367	130,710,000
Rest of State	92,730	203,862	49,636,985	106,621	238,857	53,380,924	124,240	287,520	62,578,751
Albany	3,294	7,399	1,827,142	3,411	7,841	1,826,196	3,628	8,811	1,928,271
Allegany	511	1,155	197,850	629	1,486	238,176	814	1,970	342,676
Broome	1,975	4,316	869,160	2,395	5,519	1,023,502	2,823	6,771	1,394,263
Cattaraugus	612	1,310	237,468	710	1,516	274,307	875	1,983	345,268
Cayuga	411	908	180,881	446	1,000	195,235	526	1,198	206,795
Chautauqua	1,988	4,317	913,412	2,229	4,993	949,024	2,389	5,681	983,148
Chemung	798	1,851	307,068	966	2,239	384,080	1,131	2,646	419,869
Chenango	227	519	94,290	277	621	105,816	352	886	138,464
Clinton	568	1,083	260,145	572	1,110	227,801	696	1,417	264,732
Columbia	372	742	146,583	396	811	169,591	546	1,219	214,124
Cortland	402	895	172,741	424	969	221,379	516	1,276	256,973
Delaware	189	363	76,076	232	436	105,435	227	465	82,984
Dutchess	1,288	2,588	689,726	1,475	3,065	723,295	1,874	4,002	852,818
Erie	14,850	33,261	7,016,050	17,763	39,924	7,267,511	21,591	49,332	9,427,357
Essex	219	427	97,803	246	497	92,443	311	684	141,755
Franklin	303	607	126,882	371	725	143,720	546	1,092	192,357
Fulton	376	704	167,414	437	921	173,540	505	1,144	196,050
Genesee	267	580	112,368	287	645	135,065	298	723	127,677
Greene	406	830	188,146	404	871	168,510	490	1,089	195,818
Hamilton	10	18	4,549	13	20	4,362	22	45	8,397
Herkimer	324	656	143,070	379	859	140,321	430	1,040	180,037
Jefferson	1,074	2,197	481,366	1,245	2,649	532,081	1,560	3,472	682,391
Lewis	127	258	52,205	162	349	52,956	198	452	69,267
Livingston	496	987	246,597	478	991	212,848	616	1,272	242,509
Madison	175	330	78,599	180	334	72,741	202	403	82,681
Monroe	14,470	33,113	7,265,472	17,304	40,082	9,282,611	18,560	44,024	10,273,525
Montgomery	293	593	156,581	296	655	123,811	346	761	149,266
Nassau	4,530	9,246	2,440,362	5,207	10,778	2,638,810	6,386	13,427	3,313,824
Niagara	2,521	5,183	1,119,281	2,899	5,988	1,161,188	3,448	7,607	1,466,752
Oneida	2,364	5,911	1,202,816	2,760	7,044	1,215,478	3,334	8,552	1,589,218
Onondaga	5,782	13,118	2,706,449	6,161	14,382	2,721,282	7,253	17,842	3,704,843
Ontario	564	1,064	254,159	539	1,052	220,701	659	1,440	278,195
Orange	2,904	7,675	1,684,054	3,059	7,926	1,693,583	3,238	8,751	1,635,747
Orleans	458	1,063	198,560	470	1,110	211,228	477	1,080	201,963
Oswego	790	1,815	363,996	934	2,197	411,153	1,129	2,812	463,046
Otsego	103	179	48,896	123	224	52,912	182	364	78,846
Putnam	97	172	46,553	113	189	62,723	138	242	70,022
Rensselaer	1,182	2,545	583,426	1,261	2,771	554,844	1,419	3,306	674,886
Rockland	1,184	3,460	764,286	1,336	3,787	732,170	1,575	4,458	981,600
St.Lawrence	1,054	2,158	401,997	1,253	2,663	489,904	1,616	3,538	623,780
Saratoga	240	382	118,364	288	471	136,884	303	539	123,453
Schenectady	991	2,220	501,860	1,156	2,683	500,035	1,280	3,211	601,972
Schoharie	86	141	38,801	101	188	49,592	130	276	61,655
Schuyler	118	240	47,216	102	213	46,342	152	324	58,917
Seneca	186	377	77,745	171	355	71,272	186	414	78,732
Steuben	784	1,617	313,613	1,082	2,335	426,889	1,371	3,182	525,680
Suffolk	7,154	14,658	5,141,464	7,871	16,818	5,047,771	9,367	20,833	5,499,967
Sullivan	555	1,084	292,793	556	1,242	216,344	736	1,735	313,285
Tioga	280	584	106,772	331	743	146,637	393	953	161,031
Tompkins	632	1,256	302,318	730	1,406	424,884	740	1,548	318,019
Ulster	1,232	2,524	654,526	1,421	2,801	692,359	1,731	3,732	847,543
Warren	258	528	130,432	240	459	104,126	254	565	109,038
Washington	322	583	165,901	364	699	174,253	503	1,045	226,261
Wayne	463	903	211,189	582	1,291	254,425	737	1,658	323,476
Westchester	9,588	20,647	7,501,587	11,495	25,339	7,967,532	13,110	29,573	8,705,450
Wyoming	193	353	72,599	183	362	68,026	204	412	98,871
Yates	90	169	35,326	106	213	41,220	117	243	43,207

\* Expenditures partially estimated.

Table 5  
**TEMPORARY ASSISTANCE**  
Cases, Recipients, Children, Adults and Expenditures by Local District  
January 2001

Local District	Temporary Assistance				
	Cases	Recipients	Children	Adults	Expenditures
New York State	344,210	736,613	433,918	302,695	\$156,721,985
New York City*	251,480	532,751	307,257	225,494	107,085,000
Rest of State	92,730	203,862	126,661	77,201	49,636,985
Albany	3,294	7,399	4,558	2,841	1,827,142
Allegany	511	1,155	701	454	197,850
Broome	1,975	4,316	2,674	1,642	869,160
Cattaraugus	612	1,310	850	460	237,468
Cayuga	411	908	597	311	180,881
Chautauqua	1,988	4,317	2,627	1,690	913,412
Chemung	798	1,851	1,269	582	307,068
Chenango	227	519	358	161	94,290
Clinton	568	1,083	643	440	260,145
Columbia	372	742	466	276	146,583
Cortland	402	895	532	363	172,741
Delaware	189	363	239	124	76,076
Dutchess	1,288	2,588	1,701	887	689,726
Erie	14,850	33,261	20,157	13,104	7,016,050
Essex	219	427	236	191	97,803
Franklin	303	607	364	243	126,882
Fulton	376	704	408	296	167,414
Genesee	267	580	374	206	112,368
Greene	406	830	493	337	188,146
Hamilton	10	18	11	7	4,549
Herkimer	324	656	420	236	143,070
Jefferson	1,074	2,197	1,217	980	481,366
Lewis	127	258	147	111	52,205
Livingston	496	987	499	488	246,597
Madison	175	330	238	92	78,599
Monroe	14,470	33,113	20,716	12,397	7,265,472
Montgomery	293	593	364	229	156,581
Nassau	4,530	9,246	6,050	3,196	2,440,362
Niagara	2,521	5,183	3,192	1,991	1,119,281
Oneida	2,364	5,911	3,836	2,075	1,202,816
Onondaga	5,782	13,118	8,444	4,674	2,706,449
Ontario	564	1,064	590	474	254,159
Orange	2,904	7,675	5,169	2,506	1,684,054
Orleans	458	1,063	654	409	198,560
Oswego	790	1,815	1,221	594	363,996
Otsego	103	179	123	56	48,896
Putnam	97	172	108	64	46,553
Rensselaer	1,182	2,545	1,531	1,014	583,426
Rockland	1,184	3,460	2,309	1,151	764,286
St.Lawrence	1,054	2,158	1,258	900	401,997
Saratoga	240	382	294	88	118,364
Schenectady	991	2,220	1,557	663	501,860
Schoharie	86	141	90	51	38,801
Schuyler	118	240	152	88	47,216
Seneca	186	377	229	148	77,745
Steuben	784	1,617	944	673	313,613
Suffolk	7,154	14,658	9,010	5,648	5,141,464
Sullivan	555	1,084	692	392	292,793
Tioga	280	584	380	204	106,772
Tompkins	632	1,256	723	533	302,318
Ulster	1,232	2,524	1,664	860	654,526
Warren	258	528	300	228	130,432
Washington	322	583	342	241	165,901
Wayne	463	903	581	322	211,189
Westchester	9,588	20,647	12,072	8,575	7,501,587
Wyoming	193	353	192	161	72,599
Yates	90	169	95	74	35,326

\* Expenditures partially estimated.

Table 6  
**FAMILY ASSISTANCE**  
Cases, Recipients, Children, Adults and Expenditures by Local District  
January 2001

Local District	Family Assistance				
	Cases	Recipients	Children	Adults	Expenditures
New York State	230,751	615,208	428,626	186,582	\$119,370,344
New York City*	167,147	443,693	305,226	138,467	83,511,000
Rest of State	63,604	171,515	123,400	48,115	35,859,344
Albany	2,478	6,527	4,496	2,031	1,376,202
Allegany	393	1,033	697	336	157,807
Broome	1,384	3,654	2,606	1,048	601,313
Cattaraugus	457	1,148	842	306	176,962
Cayuga	322	814	592	222	140,179
Chautauqua	1,423	3,713	2,585	1,128	715,550
Chemung	645	1,677	1,240	437	250,582
Chenango	189	479	357	122	80,782
Clinton	368	868	630	238	156,495
Columbia	269	636	462	174	113,559
Cortland	300	783	524	259	129,142
Delaware	139	309	236	73	57,549
Dutchess	878	2,099	1,599	500	495,855
Erie	10,212	28,427	20,017	8,410	5,195,600
Essex	147	353	235	118	69,372
Franklin	215	514	361	153	89,599
Fulton	243	557	398	159	104,065
Genesee	180	486	361	125	77,254
Greene	305	727	489	238	146,097
Hamilton	8	16	11	5	3,913
Herkimer	228	556	415	141	111,685
Jefferson	695	1,789	1,194	595	326,308
Lewis	92	220	141	79	36,675
Livingston	322	789	480	309	175,174
Madison	134	287	235	52	58,243
Monroe	9,581	27,092	19,591	7,501	5,008,541
Montgomery	184	478	361	117	95,375
Nassau	3,164	7,711	5,864	1,847	1,764,561
Niagara	1,773	4,351	3,103	1,248	791,489
Oneida	1,711	5,142	3,733	1,409	911,547
Onondaga	4,128	11,347	8,275	3,072	2,085,515
Ontario	343	825	570	255	142,819
Orange	2,178	6,884	5,119	1,765	1,274,664
Orleans	344	945	650	295	155,617
Oswego	621	1,629	1,198	431	271,938
Otsego	69	142	120	22	26,935
Putnam	55	124	99	25	25,958
Rensselaer	881	2,237	1,528	709	450,275
Rockland	767	2,990	2,268	722	492,485
St.Lawrence	755	1,845	1,248	597	302,214
Saratoga	175	313	285	28	82,929
Schenectady	721	1,907	1,507	400	358,649
Schoharie	59	111	89	22	24,566
Schuyler	87	208	150	58	37,444
Seneca	128	308	217	91	54,497
Steuben	527	1,345	929	416	213,682
Suffolk	4,315	11,499	8,652	2,847	3,771,992
Sullivan	380	894	675	219	204,650
Tioga	233	529	375	154	90,616
Tompkins	415	1,017	699	318	198,045
Ulster	890	2,105	1,578	527	484,236
Warren	165	433	296	137	81,430
Washington	209	465	330	135	103,291
Wayne	304	728	560	168	140,122
Westchester	6,246	17,048	11,853	5,195	5,296,963
Wyoming	113	266	182	84	47,274
Yates	57	136	93	43	23,063

\* Expenditures partially estimated.



Table 7  
SAFETY NET ASSISTANCE  
Cases, Recipients, Children, Adults and Expenditures by Local District  
January 2001

Local District	Safety Net Assistance				
	Cases	Recipients	Children	Adults	Expenditures
New York State	113,459	121,405	5,292	116,113	\$37,351,641
New York City*	84,333	89,058	2,031	87,027	23,574,000
Rest of State	29,126	32,347	3,261	29,086	13,777,641
Albany	816	872	62	810	450,940
Allegany	118	122	4	118	40,043
Broome	591	662	68	594	267,847
Cattaraugus	155	162	8	154	60,506
Cayuga	89	94	5	89	40,702
Chautauqua	565	604	42	562	197,862
Chemung	153	174	29	145	56,486
Chenango	38	40	1	39	13,508
Clinton	200	215	13	202	103,650
Columbia	103	106	4	102	33,024
Cortland	102	112	8	104	43,599
Delaware	50	54	3	51	18,527
Dutchess	410	489	102	387	193,871
Erie	4,638	4,834	140	4,694	1,820,450
Essex	72	74	1	73	28,431
Franklin	88	93	3	90	37,283
Fulton	133	147	10	137	63,349
Genesee	87	94	13	81	35,114
Greene	101	103	4	99	42,049
Hamilton	2	2	0	2	636
Herkimer	96	100	5	95	31,385
Jefferson	379	408	23	385	155,058
Lewis	35	38	6	32	15,530
Livingston	174	198	19	179	71,423
Madison	41	43	3	40	20,356
Monroe	4,889	6,021	1,125	4,896	2,256,931
Montgomery	109	115	3	112	61,206
Nassau	1,366	1,535	186	1,349	675,801
Niagara	748	832	89	743	327,792
Oneida	653	769	103	666	291,269
Onondaga	1,654	1,771	169	1,602	620,934
Ontario	221	239	20	219	111,340
Orange	726	791	50	741	409,390
Orleans	114	118	4	114	42,943
Oswego	169	186	23	163	92,058
Otsego	34	37	3	34	21,961
Putnam	42	48	9	39	20,595
Rensselaer	301	308	3	305	133,151
Rockland	417	470	41	429	271,801
St. Lawrence	299	313	10	303	99,783
Saratoga	65	69	9	60	35,435
Schenectady	270	313	50	263	143,211
Schoharie	27	30	1	29	14,235
Schuyler	31	32	2	30	9,772
Seneca	58	69	12	57	23,248
Steuben	257	272	15	257	99,931
Suffolk	2,839	3,159	358	2,801	1,369,472
Sullivan	175	190	17	173	88,143
Tioga	47	55	5	50	16,156
Tompkins	217	239	24	215	104,273
Ulster	342	419	86	333	170,290
Warren	93	95	4	91	49,002
Washington	113	118	12	106	62,610
Wayne	159	175	21	154	71,067
Westchester	3,342	3,599	219	3,380	2,204,624
Wyoming	80	87	10	77	25,325
Yates	33	33	2	31	12,263

\* Expenditures partially estimated.

Table 8  
 TEMPORARY ASSISTANCE BY FUNDING SOURCE  
 Cases, Recipients and Expenditures by Local District  
 January 2001

Local District	Total			Federally Participating - TANF Family Assistance and Safety Net - FP			Federally Non-Participating Safety Net Assistance - FNP		
	Cases	Recipients	Expenditures	Cases	Recipients	Expenditures	Cases	Recipients	Expenditures
New York State	344,210	736,613	\$156,721,985	232,151	619,045	\$120,230,377	112,059	117,568	\$36,491,608
New York City*	251,480	532,751	107,085,000	167,343	444,202	83,569,000	84,137	88,549	23,516,000
Rest of State	92,730	203,862	49,636,985	64,808	174,843	36,661,377	27,922	29,019	12,975,608
Albany	3,294	7,399	1,827,142	2,508	6,599	1,393,461	786	800	433,681
Allegany	511	1,155	197,850	393	1,033	157,807	118	122	40,043
Broome	1,975	4,316	869,160	1,419	3,732	616,923	556	584	252,237
Cattaraugus	612	1,310	237,468	458	1,150	177,567	154	160	59,901
Cayuga	411	908	180,881	326	823	142,031	85	85	38,850
Chautauqua	1,988	4,317	913,412	1,445	3,762	723,302	543	555	190,110
Chemung	798	1,851	307,068	650	1,692	252,162	148	159	54,906
Chenango	227	519	94,290	190	481	80,826	37	38	13,464
Clinton	568	1,083	260,145	373	879	159,101	195	204	101,044
Columbia	372	742	146,583	269	636	113,559	103	106	33,024
Cortland	402	895	172,741	302	789	131,070	100	106	41,671
Delaware	189	363	76,076	141	313	58,447	48	50	17,629
Dutchess	1,288	2,588	689,726	903	2,165	509,278	385	423	180,448
Erie	14,850	33,261	7,016,050	10,227	28,474	5,205,347	4,623	4,787	1,810,703
Essex	219	427	97,803	147	353	69,372	72	74	28,431
Franklin	303	607	126,882	216	518	90,092	87	89	36,790
Fulton	376	704	167,414	248	571	107,113	128	133	60,301
Genesee	267	580	112,368	181	491	77,311	86	89	35,057
Greene	406	830	188,146	306	728	147,014	100	102	41,132
Hamilton	10	18	4,549	8	16	3,913	2	2	636
Herkimer	324	656	143,070	231	561	112,526	93	95	30,544
Jefferson	1,074	2,197	481,366	713	1,823	334,900	361	374	146,466
Lewis	127	258	52,205	92	220	36,675	35	38	15,530
Livingston	496	987	246,597	331	813	179,803	165	174	66,794
Madison	175	330	78,599	135	288	58,618	40	42	19,981
Monroe	14,470	33,113	7,265,472	10,119	28,627	5,349,626	4,351	4,486	1,915,846
Montgomery	293	593	156,581	184	478	95,375	109	115	61,206
Nassau	4,530	9,246	2,440,362	3,236	7,905	1,810,961	1,294	1,341	629,401
Niagara	2,521	5,183	1,119,281	1,818	4,469	818,504	703	714	300,777
Oneida	2,364	5,911	1,202,816	1,739	5,228	928,906	625	683	273,910
Onondaga	5,782	13,118	2,706,449	4,158	11,412	2,105,883	1,624	1,706	600,566
Ontario	564	1,064	254,159	349	842	147,536	215	222	106,623
Orange	2,904	7,675	1,684,054	2,208	6,955	1,291,646	696	720	392,408
Orleans	458	1,063	198,560	344	945	155,617	114	118	42,943
Oswego	790	1,815	363,996	626	1,646	273,691	164	169	90,305
Otsego	103	179	48,896	70	146	27,797	33	33	21,099
Putnam	97	172	46,553	56	127	26,370	41	45	20,183
Rensselaer	1,182	2,545	583,426	883	2,241	450,886	299	304	132,540
Rockland	1,184	3,460	764,286	781	3,033	507,730	403	427	256,556
St. Lawrence	1,054	2,158	401,997	758	1,855	304,011	296	303	97,986
Saratoga	240	382	118,364	176	316	83,420	64	66	34,944
Schenectady	991	2,220	501,860	738	1,955	368,427	253	265	133,433
Schoharie	86	141	38,801	60	112	24,826	26	29	13,975
Schuyler	118	240	47,216	87	208	37,444	31	32	9,772
Seneca	186	377	77,745	133	322	56,601	53	55	21,144
Steuben	784	1,617	313,613	530	1,351	215,620	254	266	97,993
Suffolk	7,154	14,658	5,141,464	4,416	11,802	3,895,220	2,738	2,856	1,246,244
Sullivan	555	1,084	292,793	384	909	205,739	171	175	87,054
Tioga	280	584	106,772	235	535	91,144	45	49	15,628
Tompkins	632	1,256	302,318	426	1,037	205,830	206	219	96,488
Ulster	1,232	2,524	654,526	931	2,212	509,079	301	312	145,447
Warren	258	528	130,432	165	433	81,430	93	95	49,002
Washington	322	583	165,901	212	468	105,663	110	115	60,238
Wayne	463	903	211,189	308	741	142,163	155	162	69,026
Westchester	9,588	20,647	7,501,587	6,295	17,218	5,335,331	3,293	3,429	2,166,256
Wyoming	193	353	72,599	114	269	47,620	79	84	24,979
Yates	90	169	35,326	57	136	23,063	33	33	12,263

\* Expenditures partially estimated.

Table 9  
 TEMPORARY ASSISTANCE TO NEEDY FAMILIES (TANF) - FP BY PROGRAM  
 Cases, Recipients, Children, Adults and Expenditures by Local District  
 January 2001

Local District	Family Assistance					Safety Net Assistance - FP				
	Cases	Recipients	Children	Adults	Expenditures	Cases	Recipients	Children	Adults	Expenditures
New York State	230,751	615,208	428,626	186,582	\$119,370,344	1,400	3,837	2,368	1,469	\$860,033
New York City*	167,147	443,693	305,226	138,467	83,511,000	196	509	281	228	58,000
Rest of State	63,604	171,515	123,400	48,115	35,859,344	1,204	3,328	2,087	1,241	802,033
Albany	2,478	6,527	4,496	2,031	1,376,202	30	72	40	32	17,259
Allegany	393	1,033	697	336	157,807	0	0	0	0	0
Broome	1,384	3,654	2,606	1,048	601,313	35	78	42	36	15,610
Cattaraugus	457	1,148	842	306	176,962	1	2	0	2	605
Cayuga	322	814	592	222	140,179	4	9	4	5	1,852
Chautauqua	1,423	3,713	2,585	1,128	715,550	22	49	29	20	7,752
Chemung	645	1,677	1,240	437	250,582	5	15	10	5	1,580
Chenango	189	479	357	122	80,782	1	2	1	1	44
Clinton	368	868	630	238	156,495	5	11	7	4	2,606
Columbia	269	636	462	174	113,559	0	0	0	0	0
Cortland	300	783	524	259	129,142	2	6	4	2	1,928
Delaware	139	309	236	73	57,549	2	4	2	2	898
Dutchess	878	2,099	1,599	500	495,855	25	66	40	26	13,423
Erie	10,212	28,427	20,017	8,410	5,195,600	15	47	28	19	9,747
Essex	147	353	235	118	69,372	0	0	0	0	0
Franklin	215	514	361	153	89,599	1	4	2	2	493
Fulton	243	557	398	159	104,065	5	14	7	7	3,048
Genesee	180	486	361	125	77,254	1	5	4	1	57
Greene	305	727	489	238	146,097	1	1	0	1	917
Hamilton	8	16	11	5	3,913	0	0	0	0	0
Herkimer	228	556	415	141	111,685	3	5	2	3	841
Jefferson	695	1,789	1,194	595	326,308	18	34	18	16	8,592
Lewis	92	220	141	79	36,675	0	0	0	0	0
Livingston	322	789	480	309	175,174	9	24	14	10	4,629
Madison	134	287	235	52	58,243	1	1	0	1	375
Monroe	9,581	27,092	19,591	7,501	5,008,541	538	1,535	988	547	341,085
Montgomery	184	478	361	117	95,375	0	0	0	0	0
Nassau	3,164	7,711	5,864	1,847	1,764,561	72	194	119	75	46,400
Niagara	1,773	4,351	3,103	1,248	791,489	45	118	77	41	27,015
Oneida	1,711	5,142	3,733	1,409	911,547	28	86	56	30	17,359
Onondaga	4,128	11,347	8,275	3,072	2,085,515	30	65	32	33	20,368
Ontario	343	825	570	255	142,819	6	17	10	7	4,717
Orange	2,178	6,884	5,119	1,765	1,274,664	30	71	38	33	16,982
Orleans	344	945	650	295	155,617	0	0	0	0	0
Oswego	621	1,629	1,198	431	271,938	5	17	14	3	1,753
Otsego	69	142	120	22	26,935	1	4	3	1	862
Putnam	55	124	99	25	25,958	1	3	2	1	412
Rensselaer	881	2,237	1,528	709	450,275	2	4	2	2	611
Rockland	767	2,990	2,268	722	492,485	14	43	30	13	15,245
St.Lawrence	755	1,845	1,248	597	302,214	3	10	5	5	1,797
Saratoga	175	313	285	28	82,929	1	3	2	1	491
Schenectady	721	1,907	1,507	400	358,649	17	48	30	18	9,778
Schoharie	59	111	89	22	24,566	1	1	0	1	260
Schuyler	87	208	150	58	37,444	0	0	0	0	0
Seneca	128	308	217	91	54,497	5	14	8	6	2,104
Steuben	527	1,345	929	416	213,682	3	6	4	2	1,938
Suffolk	4,315	11,499	8,652	2,847	3,771,992	101	303	196	107	123,228
Sullivan	380	894	675	219	204,650	4	15	10	5	1,089
Tioga	233	529	375	154	90,616	2	6	2	4	528
Tompkins	415	1,017	699	318	198,045	11	20	10	10	7,785
Ulster	890	2,105	1,578	527	484,236	41	107	68	39	24,843
Warren	165	433	296	137	81,430	0	0	0	0	0
Washington	209	465	330	135	103,291	3	3	2	1	2,372
Wayne	304	728	560	168	140,122	4	13	9	4	2,041
Westchester	6,246	17,048	11,853	5,195	5,296,963	49	170	114	56	38,368
Wyoming	113	266	182	84	47,274	1	3	2	1	346
Yates	57	136	93	43	23,063	0	0	0	0	0

\* Expenditures partially estimated.

Table 10  
SAFETY NET ASSISTANCE - FNP  
Cases, Recipients, Children, Adults and Expenditures by Local District  
January 2001

Local District	Safety Net Assistance - FNP				
	Cases	Recipients	Children	Adults	Expenditures
New York State	112,059	117,568	2,924	114,644	\$36,491,608
New York City*	84,137	88,549	1,750	86,799	23,516,000
Rest of State	27,922	29,019	1,174	27,845	12,975,608
Albany	786	800	22	778	433,681
Allegany	118	122	4	118	40,043
Broome	556	584	26	558	252,237
Cattaraugus	154	160	8	152	59,901
Cayuga	85	85	1	84	38,850
Chautauqua	543	555	13	542	190,110
Chemung	148	159	19	140	54,906
Chenango	37	38	0	38	13,464
Clinton	195	204	6	198	101,044
Columbia	103	106	4	102	33,024
Cortland	100	106	4	102	41,671
Delaware	48	50	1	49	17,629
Dutchess	385	423	62	361	180,448
Erie	4,623	4,787	112	4,675	1,810,703
Essex	72	74	1	73	28,431
Franklin	87	89	1	88	36,790
Fulton	128	133	3	130	60,301
Genesee	86	89	9	80	35,057
Greene	100	102	4	98	41,132
Hamilton	2	2	0	2	636
Herkimer	93	95	3	92	30,544
Jefferson	361	374	5	369	146,466
Lewis	35	38	6	32	15,530
Livingston	165	174	5	169	66,794
Madison	40	42	3	39	19,981
Monroe	4,351	4,486	137	4,349	1,915,846
Montgomery	109	115	3	112	61,206
Nassau	1,294	1,341	67	1,274	629,401
Niagara	703	714	12	702	300,777
Oneida	625	683	47	636	273,910
Onondaga	1,624	1,706	137	1,569	600,566
Ontario	215	222	10	212	106,623
Orange	696	720	12	708	392,408
Orleans	114	118	4	114	42,943
Oswego	164	169	9	160	90,305
Otsego	33	33	0	33	21,099
Putnam	41	45	7	38	20,183
Rensselaer	299	304	1	303	132,540
Rockland	403	427	11	416	256,556
St. Lawrence	296	303	5	298	97,986
Saratoga	64	66	7	59	34,944
Schenectady	253	265	20	245	133,433
Schoharie	26	29	1	28	13,975
Schuyler	31	32	2	30	9,772
Seneca	53	55	4	51	21,144
Steuben	254	266	11	255	97,993
Suffolk	2,738	2,856	162	2,694	1,246,244
Sullivan	171	175	7	168	87,054
Tioga	45	49	3	46	15,628
Tompkins	206	219	14	205	96,488
Ulster	301	312	18	294	145,447
Warren	93	95	4	91	49,002
Washington	110	115	10	105	60,238
Wayne	155	162	12	150	69,026
Westchester	3,293	3,429	105	3,324	2,166,256
Wyoming	79	84	8	76	24,979
Yates	33	33	2	31	12,263

\* Expenditures partially estimated.

Table 11  
SAFETY NET ASSISTANCE - FNP BY CASE SIZE CATEGORY  
Cases, Recipients, Children, Adults and Expenditures by Local District  
January 2001

Local District	One Person					Multi-Person				
	Cases	Recipients	Children	Adults	Expenditures	Cases	Recipients	Children	Adults	Expenditures
New York State	See Note	See Note	See Note	See Note	See Note	See Note	See Note	See Note	See Note	See Note
New York City	See Note	See Note	See Note	See Note	See Note	See Note	See Note	See Note	See Note	See Note
Rest of State	27,063	27,063	557	26,506	\$12,521,728	859	1,956	617	1,339	\$453,880
Albany	777	777	10	767	428,864	9	23	12	11	4,817
Allegany	114	114	3	111	39,091	4	8	1	7	952
Broome	533	533	13	520	239,924	23	51	13	38	12,313
Cattaraugus	151	151	3	148	58,762	3	9	5	4	1,139
Cayuga	85	85	1	84	38,850	0	0	0	0	0
Chautauqua	533	533	8	525	186,491	10	22	5	17	3,619
Chemung	137	137	8	129	50,563	11	22	11	11	4,343
Chenango	36	36	0	36	13,231	1	2	0	2	233
Clinton	186	186	3	183	97,102	9	18	3	15	3,942
Columbia	100	100	2	98	32,092	3	6	2	4	932
Cortland	96	96	2	94	38,624	4	10	2	8	3,047
Delaware	46	46	1	45	17,096	2	4	0	4	533
Dutchess	364	364	27	337	165,681	21	59	35	24	14,767
Erie	4,492	4,492	42	4,450	1,751,906	131	295	70	225	58,797
Essex	70	70	1	69	27,907	2	4	0	4	524
Franklin	85	85	1	84	36,382	2	4	0	4	408
Fulton	123	123	1	122	58,320	5	10	2	8	1,981
Genesee	84	84	4	80	34,183	2	5	5	0	874
Greene	98	98	2	96	40,261	2	4	2	2	871
Hamilton	2	2	0	2	636	0	0	0	0	0
Herkimer	91	91	2	89	29,655	2	4	1	3	889
Jefferson	352	352	4	348	143,039	9	22	1	21	3,427
Lewis	33	33	1	32	14,416	2	5	5	0	1,114
Livingston	157	157	4	153	62,740	8	17	1	16	4,054
Madison	38	38	1	37	19,166	2	4	2	2	815
Monroe	4,241	4,241	53	4,188	1,858,694	110	245	84	161	57,152
Montgomery	105	105	0	105	59,216	4	10	3	7	1,990
Nassau	1,257	1,257	36	1,221	608,645	37	84	31	53	20,756
Niagara	693	693	8	685	297,354	10	21	4	17	3,423
Oneida	581	581	16	565	251,309	44	102	31	71	22,601
Onondaga	1,568	1,568	76	1,492	575,027	56	138	61	77	25,539
Ontario	211	211	3	208	105,135	4	11	7	4	1,488
Orange	675	675	3	672	378,890	21	45	9	36	13,518
Orleans	110	110	2	108	41,649	4	8	2	6	1,294
Oswego	160	160	2	158	87,986	4	9	7	2	2,319
Otsego	33	33	0	33	21,099	0	0	0	0	0
Putnam	37	37	3	34	18,711	4	8	4	4	1,472
Rensselaer	294	294	0	294	129,924	5	10	1	9	2,616
Rockland	381	381	3	378	241,924	22	46	8	38	14,632
St.Lawrence	289	289	5	284	95,064	7	14	0	14	2,922
Saratoga	62	62	5	57	34,289	2	4	2	2	655
Schenectady	245	245	9	236	128,397	8	20	11	9	5,036
Schoharie	23	23	1	22	12,345	3	6	0	6	1,630
Schuyler	30	30	2	28	9,324	1	2	0	2	448
Seneca	51	51	3	48	20,636	2	4	1	3	508
Steuben	246	246	2	244	95,659	8	20	9	11	2,334
Suffolk	2,662	2,662	78	2,584	1,206,159	76	194	84	110	40,085
Sullivan	168	168	4	164	86,653	3	7	3	4	401
Tioga	41	41	2	39	14,700	4	8	1	7	928
Tompkins	197	197	5	192	91,887	9	22	9	13	4,601
Ulster	292	292	6	286	140,887	9	20	12	8	4,560
Warren	91	91	4	87	48,583	2	4	0	4	419
Washington	105	105	8	97	58,022	5	10	2	8	2,216
Wayne	151	151	7	144	66,909	4	11	5	6	2,117
Westchester	3,174	3,174	59	3,115	2,076,100	119	255	46	209	90,156
Wyoming	74	74	6	68	23,306	5	10	2	8	1,673
Yates	33	33	2	31	12,263	0	0	0	0	0

Note: A breakout of One-Person and Multi-Person cases is not available for New York City.

Table 12  
**SAFETY NET ASSISTANCE - FNP - CASH TOTAL**  
Cases, Recipients, Children, Adults and Expenditures by Local District  
January 2001

Local District	Safety Net Assistance - FNP - Cash Total				
	Cases	Recipients	Children	Adults	Expenditures
New York State	90,833	95,854	2,376	93,478	See Note
New York City	69,730	73,779	1,386	72,393	See Note
Rest of State	21,103	22,075	990	21,085	\$9,372,315
Albany	783	797	22	775	433,188
Allegany	106	109	3	106	35,546
Broome	375	401	24	377	143,638
Cattaraugus	143	149	8	141	57,228
Cayuga	72	72	1	71	27,362
Chautauqua	467	478	11	467	162,827
Chemung	129	140	19	121	43,788
Chenango	26	26	0	26	9,765
Clinton	158	167	5	162	82,837
Columbia	91	93	2	91	26,856
Cortland	87	93	3	90	36,171
Delaware	40	42	1	41	13,070
Dutchess	194	228	41	187	84,973
Erie	3,475	3,617	105	3,512	1,364,457
Essex	61	63	0	63	22,433
Franklin	67	69	1	68	29,894
Fulton	90	95	2	93	41,057
Genesee	69	70	5	65	26,001
Greene	81	82	0	82	28,744
Hamilton	2	2	0	2	636
Herkimer	77	78	0	78	21,891
Jefferson	267	278	2	276	104,509
Lewis	25	28	6	22	9,755
Livingston	137	145	4	141	55,227
Madison	33	35	3	32	14,333
Monroe	2,485	2,587	112	2,475	1,015,079
Montgomery	105	111	3	108	60,025
Nassau	961	995	35	960	446,019
Niagara	411	420	10	410	163,523
Oneida	483	538	43	495	187,079
Onondaga	1,388	1,467	118	1,349	491,048
Ontario	143	149	9	140	61,192
Orange	507	526	9	517	257,972
Orleans	109	113	3	110	41,273
Oswego	132	137	9	128	67,868
Otsego	24	24	0	24	12,825
Putnam	25	28	2	26	10,923
Rensselaer	227	232	1	231	87,935
Rockland	176	192	10	182	113,313
St.Lawrence	256	263	5	258	76,434
Saratoga	52	54	6	48	24,581
Schenectady	189	200	19	181	92,040
Schoharie	25	28	1	27	12,854
Schuyler	21	22	2	20	6,411
Seneca	35	37	3	34	10,149
Steuben	203	211	8	203	70,726
Suffolk	2,265	2,376	136	2,240	868,883
Sullivan	112	116	7	109	37,748
Tioga	42	46	2	44	14,790
Tompkins	126	138	13	125	50,168
Ulster	214	225	17	208	95,418
Warren	81	83	4	79	35,192
Washington	92	97	8	89	44,324
Wayne	116	123	12	111	43,144
Westchester	2,938	3,070	105	2,965	1,961,768
Wyoming	74	79	8	71	23,659
Yates	31	31	2	29	11,766

Note: A breakout of Safety Net Assistance - FNP - Cash and Safety Net Assistance - FNP - Non-Cash expenditures is not available for New York City.

Table 13  
SAFETY NET ASSISTANCE - FNP - CASH BY CASE SIZE CATEGORY  
Cases, Recipients, Children, Adults and Expenditures by Local District  
January 2001

Local District	One Person					Multi-Person				
	Cases	Recipients	Children	Adults	Expenditures	Cases	Recipients	Children	Adults	Expenditures
New York State	See Note	See Note	See Note	See Note	See Note	See Note	See Note	See Note	See Note	See Note
New York City	See Note	See Note	See Note	See Note	See Note	See Note	See Note	See Note	See Note	See Note
Rest of State	20,346	20,346	464	19,882	\$8,972,931	757	1,729	526	1,203	\$399,384
Albany	774	774	10	764	428,371	9	23	12	11	4,817
Allegany	103	103	3	100	34,764	3	6	0	6	782
Broome	354	354	12	342	134,037	21	47	12	35	9,601
Cattaraugus	140	140	3	137	56,089	3	9	5	4	1,139
Cayuga	72	72	1	71	27,362	0	0	0	0	0
Chautauqua	458	458	8	450	159,853	9	20	3	17	2,974
Chemung	118	118	8	110	39,445	11	22	11	11	4,343
Chenango	26	26	0	26	9,765	0	0	0	0	0
Clinton	149	149	2	147	78,895	9	18	3	15	3,942
Columbia	89	89	2	87	26,610	2	4	0	4	246
Cortland	83	83	1	82	33,124	4	10	2	8	3,047
Delaware	38	38	1	37	12,537	2	4	0	4	533
Dutchess	177	177	14	163	72,176	17	51	27	24	12,797
Erie	3,362	3,362	42	3,320	1,314,040	113	255	63	192	50,417
Essex	59	59	0	59	21,909	2	4	0	4	524
Franklin	65	65	1	64	29,486	2	4	0	4	408
Fulton	85	85	0	85	39,076	5	10	2	8	1,981
Genesee	68	68	3	65	25,549	1	2	2	0	452
Greene	80	80	0	80	28,410	1	2	0	2	334
Hamilton	2	2	0	2	636	0	0	0	0	0
Herkimer	76	76	0	76	21,626	1	2	0	2	265
Jefferson	260	260	2	258	101,835	7	18	0	18	2,674
Lewis	23	23	1	22	8,641	2	5	5	0	1,114
Livingston	130	130	3	127	51,608	7	15	1	14	3,619
Madison	31	31	1	30	13,518	2	4	2	2	815
Monroe	2,402	2,402	51	2,351	974,589	83	185	61	124	40,490
Montgomery	101	101	0	101	58,035	4	10	3	7	1,990
Nassau	931	931	20	911	428,128	30	64	15	49	17,891
Niagara	403	403	7	396	160,530	8	17	3	14	2,993
Oneida	441	441	15	426	165,206	42	97	28	69	21,873
Onondaga	1,335	1,335	59	1,276	467,154	53	132	59	73	23,894
Ontario	140	140	3	137	59,933	3	9	6	3	1,259
Orange	488	488	3	485	247,587	19	38	6	32	10,385
Orleans	105	105	1	104	39,979	4	8	2	6	1,294
Oswego	128	128	2	126	65,549	4	9	7	2	2,319
Otsego	24	24	0	24	12,825	0	0	0	0	0
Putnam	22	22	0	22	9,743	3	6	2	4	1,180
Rensselaer	222	222	0	222	85,319	5	10	1	9	2,616
Rockland	162	162	3	159	103,236	14	30	7	23	10,077
St.Lawrence	249	249	5	244	73,512	7	14	0	14	2,922
Saratoga	50	50	4	46	23,926	2	4	2	2	655
Schenectady	182	182	9	173	87,136	7	18	10	8	4,904
Schoharie	22	22	1	21	11,224	3	6	0	6	1,630
Schuyler	20	20	2	18	5,963	1	2	0	2	448
Seneca	33	33	2	31	9,641	2	4	1	3	508
Steuben	197	197	2	195	68,703	6	14	6	8	2,023
Suffolk	2,196	2,196	59	2,137	832,758	69	180	77	103	36,125
Sullivan	109	109	4	105	37,347	3	7	3	4	401
Tioga	38	38	1	37	13,862	4	8	1	7	928
Tompkins	118	118	4	114	46,009	8	20	9	11	4,159
Ulster	205	205	5	200	90,858	9	20	12	8	4,560
Warren	79	79	4	75	34,773	2	4	0	4	419
Washington	87	87	6	81	42,108	5	10	2	8	2,216
Wayne	112	112	7	105	41,027	4	11	5	6	2,117
Westchester	2,823	2,823	59	2,764	1,873,157	115	247	46	201	88,611
Wyoming	69	69	6	63	21,986	5	10	2	8	1,673
Yates	31	31	2	29	11,766	0	0	0	0	0

Note: A breakout of One-Person and Multi-Person cases is not available for New York City.

Table 14  
**SAFETY NET ASSISTANCE - FNP - NON-CASH TOTAL**  
Cases, Recipients, Children, Adults and Expenditures by Local District  
January 2001

Local District	Safety Net Assistance - FNP - Non-Cash Total				
	Cases	Recipients	Children	Adults	Expenditures
New York State	21,226	21,714	548	21,166	See Note
New York City	14,407	14,770	364	14,406	See Note
Rest of State	6,819	6,944	184	6,760	\$3,603,293
Albany	3	3	0	3	493
Allegany	12	13	1	12	4,497
Broome	181	183	2	181	108,599
Cattaraugus	11	11	0	11	2,673
Cayuga	13	13	0	13	11,488
Chautauqua	76	77	2	75	27,283
Chemung	19	19	0	19	11,118
Chenango	11	12	0	12	3,699
Clinton	37	37	1	36	18,207
Columbia	12	13	2	11	6,168
Cortland	13	13	1	12	5,500
Delaware	8	8	0	8	4,559
Dutchess	191	195	21	174	95,475
Erie	1,148	1,170	7	1,163	446,246
Essex	11	11	1	10	5,998
Franklin	20	20	0	20	6,896
Fulton	38	38	1	37	19,244
Genesee	17	19	4	15	9,056
Greene	19	20	4	16	12,388
Hamilton	0	0	0	0	0
Herkimer	16	17	3	14	8,653
Jefferson	94	96	3	93	41,957
Lewis	10	10	0	10	5,775
Livingston	28	29	1	28	11,567
Madison	7	7	0	7	5,648
Monroe	1,866	1,899	25	1,874	900,767
Montgomery	4	4	0	4	1,181
Nassau	333	346	32	314	183,382
Niagara	292	294	2	292	137,254
Oneida	142	145	4	141	86,831
Onondaga	236	239	19	220	109,518
Ontario	72	73	1	72	45,431
Orange	189	194	3	191	134,436
Orleans	5	5	1	4	1,670
Oswego	32	32	0	32	22,437
Otsego	9	9	0	9	8,274
Putnam	16	17	5	12	9,260
Rensselaer	72	72	0	72	44,605
Rockland	227	235	1	234	143,243
St.Lawrence	40	40	0	40	21,552
Saratoga	12	12	1	11	10,363
Schenectady	64	65	1	64	41,393
Schoharie	1	1	0	1	1,121
Schuyler	10	10	0	10	3,361
Seneca	18	18	1	17	10,995
Steuben	51	55	3	52	27,267
Suffolk	473	480	26	454	377,361
Sullivan	59	59	0	59	49,306
Tioga	3	3	1	2	838
Tompkins	80	81	1	80	46,320
Ulster	87	87	1	86	50,029
Warren	12	12	0	12	13,810
Washington	18	18	2	16	15,914
Wayne	39	39	0	39	25,882
Westchester	355	359	0	359	204,488
Wyoming	5	5	0	5	1,320
Yates	2	2	0	2	497

Note: A breakout of Safety Net Assistance - FNP - Cash and Safety Net Assistance - FNP - Non-Cash expenditures is not available for New York City.



Table 15  
SAFETY NET ASSISTANCE - FNP - NON-CASH BY CASE SIZE CATEGORY  
Cases, Recipients, Children, Adults and Expenditures by Local District  
January 2001

Local District	One Person					Multi-Person				
	Cases	Recipients	Children	Adults	Expenditures	Cases	Recipients	Children	Adults	Expenditures
New York State	See Note	See Note	See Note	See Note	See Note	See Note	See Note	See Note	See Note	See Note
New York City	See Note	See Note	See Note	See Note	See Note	See Note	See Note	See Note	See Note	See Note
Rest of State	6,717	6,717	93	6,624	\$3,548,797	102	227	91	136	\$54,496
Albany	3	3	0	3	493	0	0	0	0	0
Allegany	11	11	0	11	4,327	1	2	1	1	170
Broome	179	179	1	178	105,887	2	4	1	3	2,712
Cattaraugus	11	11	0	11	2,673	0	0	0	0	0
Cayuga	13	13	0	13	11,488	0	0	0	0	0
Chautauqua	75	75	0	75	26,638	1	2	2	0	645
Chemung	19	19	0	19	11,118	0	0	0	0	0
Chenango	10	10	0	10	3,466	1	2	0	2	233
Clinton	37	37	1	36	18,207	0	0	0	0	0
Columbia	11	11	0	11	5,482	1	2	2	0	686
Cortland	13	13	1	12	5,500	0	0	0	0	0
Delaware	8	8	0	8	4,559	0	0	0	0	0
Dutchess	187	187	13	174	93,505	4	8	8	0	1,970
Erie	1,130	1,130	0	1,130	437,866	18	40	7	33	8,380
Essex	11	11	1	10	5,998	0	0	0	0	0
Franklin	20	20	0	20	6,896	0	0	0	0	0
Fulton	38	38	1	37	19,244	0	0	0	0	0
Genesee	16	16	1	15	8,634	1	3	3	0	422
Greene	18	18	2	16	11,851	1	2	2	0	537
Hamilton	0	0	0	0	0	0	0	0	0	0
Herkimer	15	15	2	13	8,029	1	2	1	1	624
Jefferson	92	92	2	90	41,204	2	4	1	3	753
Lewis	10	10	0	10	5,775	0	0	0	0	0
Livingston	27	27	1	26	11,132	1	2	0	2	435
Madison	7	7	0	7	5,648	0	0	0	0	0
Monroe	1,839	1,839	2	1,837	884,105	27	60	23	37	16,662
Montgomery	4	4	0	4	1,181	0	0	0	0	0
Nassau	326	326	16	310	180,517	7	20	16	4	2,865
Niagara	290	290	1	289	136,824	2	4	1	3	430
Oneida	140	140	1	139	86,103	2	5	3	2	728
Onondaga	233	233	17	216	107,873	3	6	2	4	1,645
Ontario	71	71	0	71	45,202	1	2	1	1	229
Orange	187	187	0	187	131,303	2	7	3	4	3,133
Orleans	5	5	1	4	1,670	0	0	0	0	0
Oswego	32	32	0	32	22,437	0	0	0	0	0
Otsego	9	9	0	9	8,274	0	0	0	0	0
Putnam	15	15	3	12	8,968	1	2	2	0	292
Rensselaer	72	72	0	72	44,605	0	0	0	0	0
Rockland	219	219	0	219	138,688	8	16	1	15	4,555
St.Lawrence	40	40	0	40	21,552	0	0	0	0	0
Saratoga	12	12	1	11	10,363	0	0	0	0	0
Schenectady	63	63	0	63	41,261	1	2	1	1	132
Schoharie	1	1	0	1	1,121	0	0	0	0	0
Schuyler	10	10	0	10	3,361	0	0	0	0	0
Seneca	18	18	1	17	10,995	0	0	0	0	0
Steuben	49	49	0	49	26,956	2	6	3	3	311
Suffolk	466	466	19	447	373,401	7	14	7	7	3,960
Sullivan	59	59	0	59	49,306	0	0	0	0	0
Tioga	3	3	1	2	838	0	0	0	0	0
Tompkins	79	79	1	78	45,878	1	2	0	2	442
Ulster	87	87	1	86	50,029	0	0	0	0	0
Warren	12	12	0	12	13,810	0	0	0	0	0
Washington	18	18	2	16	15,914	0	0	0	0	0
Wayne	39	39	0	39	25,882	0	0	0	0	0
Westchester	351	351	0	351	202,943	4	8	0	8	1,545
Wyoming	5	5	0	5	1,320	0	0	0	0	0
Yates	2	2	0	2	497	0	0	0	0	0

Note: A breakout of One-Person and Multi-Person cases is not available for New York City.

Table 16  
**FOOD STAMPS**  
Households, Persons and Value of Food Stamps Benefits by Local District  
January 2001

Local District	Total			Temporary Assistance			Non-Temporary Assistance		
	Households	Persons	Food Stamps Benefits	Households	Persons	Food Stamps Benefits	Households	Persons	Food Stamps Benefits
New York State	665,313	1,328,554	\$111,238,064	479,199	873,632	\$79,501,261	186,114	454,922	\$31,736,803
New York City	433,069	845,714	76,312,115	353,021	659,238	62,206,641	80,048	186,476	14,105,474
Rest of State	232,244	482,840	34,925,949	126,178	214,394	17,294,620	106,066	268,446	17,631,329
Albany	8,071	16,578	1,214,670	4,670	8,176	670,965	3,401	8,402	543,705
Allegany	1,662	3,461	224,931	835	1,381	98,966	827	2,080	125,965
Broome	5,381	10,594	729,773	2,893	4,784	375,454	2,488	5,810	354,319
Cattaraugus	2,559	5,170	326,125	1,087	1,558	116,619	1,472	3,612	209,506
Cayuga	1,818	3,942	275,660	702	1,006	74,672	1,116	2,936	200,988
Chautauqua	4,825	10,205	730,029	2,654	4,555	384,594	2,171	5,650	345,435
Chemung	2,217	4,764	312,528	1,186	1,927	145,686	1,031	2,837	166,842
Chenango	1,481	3,148	207,649	463	673	50,674	1,018	2,475	156,975
Clinton	2,776	5,214	354,289	1,310	1,640	118,951	1,466	3,574	235,338
Columbia	1,316	2,393	171,802	622	898	71,788	694	1,495	100,014
Cortland	1,317	2,750	191,564	634	992	77,696	683	1,758	113,868
Delaware	1,245	2,369	151,172	476	589	39,166	769	1,780	112,006
Dutchess	3,396	6,214	444,447	1,663	2,579	215,152	1,733	3,635	229,295
Erie	34,732	71,573	5,382,349	19,853	34,900	3,029,380	14,879	36,673	2,352,969
Essex	1,110	2,067	123,435	502	653	41,452	608	1,414	81,983
Franklin	1,534	3,106	205,252	682	910	63,773	852	2,196	141,479
Fulton	1,703	3,550	252,316	716	948	72,345	987	2,602	179,971
Genesee	1,063	2,179	139,667	467	682	51,029	596	1,497	88,638
Greene	1,227	2,430	171,992	579	890	76,426	648	1,540	95,566
Hamilton	144	212	10,414	27	33	2,143	117	179	8,271
Herkimer	1,763	3,646	244,597	671	921	64,503	1,092	2,725	180,094
Jefferson	3,437	7,588	527,284	1,646	2,554	198,735	1,791	5,034	328,549
Lewis	795	1,735	116,142	275	379	25,245	520	1,356	90,897
Livingston	1,457	2,772	198,942	706	1,128	99,042	751	1,644	99,900
Madison	1,335	2,711	185,563	534	647	45,278	801	2,064	140,285
Monroe	24,798	54,114	3,955,707	16,944	32,100	2,572,751	7,854	22,014	1,382,956
Montgomery	1,704	3,736	277,534	594	805	63,156	1,110	2,931	214,378
Nassau	9,537	17,158	1,325,121	5,962	9,638	817,171	3,575	7,520	507,950
Niagara	5,748	11,644	841,811	3,260	5,643	448,818	2,488	6,001	392,993
Oneida	8,639	18,323	1,320,325	3,979	6,579	520,375	4,660	11,744	799,950
Onondaga	12,247	27,372	2,023,693	6,677	12,615	1,024,506	5,570	14,757	999,187
Ontario	1,921	3,530	244,771	873	1,245	101,689	1,048	2,285	143,082
Orange	7,284	18,608	1,446,004	3,365	7,080	599,926	3,919	11,528	846,078
Orleans	1,121	2,499	183,619	572	1,054	90,453	549	1,445	93,166
Oswego	3,182	7,558	528,851	1,304	2,079	156,922	1,878	5,479	371,929
Otsego	1,122	2,053	129,987	424	473	29,611	698	1,580	100,376
Putnam	439	638	38,808	247	314	19,833	192	324	18,975
Rensselaer	3,718	7,591	563,774	1,698	2,669	213,347	2,020	4,922	350,427
Rockland	4,546	14,461	1,092,548	1,831	3,629	237,122	2,715	10,832	855,426
St. Lawrence	3,303	6,764	449,153	1,650	2,555	186,704	1,653	4,209	262,449
Saratoga	2,526	4,870	328,565	813	879	59,148	1,713	3,991	269,417
Schenectady	3,794	8,192	579,212	1,604	2,499	190,352	2,190	5,693	388,860
Schoharie	732	1,471	92,756	266	293	19,253	466	1,178	73,503
Schuyler	389	801	51,669	180	276	20,514	209	525	31,155
Seneca	785	1,431	90,825	318	461	32,759	467	970	58,066
Steuben	2,514	5,472	365,687	1,213	1,889	150,068	1,301	3,583	215,619
Suffolk	14,033	25,728	1,875,772	8,910	14,480	1,144,700	5,123	11,248	731,072
Sullivan	1,949	3,823	255,169	928	1,286	95,410	1,021	2,537	159,759
Tioga	862	1,913	125,208	402	611	48,017	460	1,302	77,191
Tompkins	1,678	3,309	226,842	902	1,418	106,626	776	1,891	120,216
Ulster	3,563	6,511	441,454	1,885	2,874	221,904	1,678	3,637	219,550
Warren	1,519	2,887	203,546	739	1,079	80,831	780	1,808	122,715
Washington	1,419	2,753	175,764	628	836	58,464	791	1,917	117,300
Wayne	1,963	3,578	239,585	892	1,220	93,868	1,071	2,358	145,717
Westchester	15,458	31,013	2,379,948	10,729	19,693	1,625,545	4,729	11,320	754,403
Wyoming	699	1,382	93,861	293	418	33,047	406	964	60,814
Yates	688	1,286	85,788	243	301	21,996	445	985	63,792

Note: Food Stamps households containing only SSI recipients are counted as TA in accordance with Federal reporting requirements.

Note: Rest of State data does not include the following FAP data: 82 households, 96 persons, and \$9,321 in expenditures.

Table 17  
**SUPPLEMENTAL SECURITY INCOME**  
 Recipients, Total Program Expenditures, Federal and State Shares, by Local District  
 January 2001

Local District	Expenditures			
	Recipients	Total	Federal	State
New York State*	618,215	\$278,600,833	\$231,610,450	\$46,990,383
New York City	392,110	183,812,595	156,381,290	27,431,305
Rest of State	215,530	91,182,098	72,875,441	18,306,657
Albany	6,296	2,702,218	2,137,972	564,246
Allegany	1,459	659,478	532,400	127,078
Broome	4,912	2,047,532	1,682,584	364,948
Cattaraugus	2,335	1,012,055	826,357	185,698
Cayuga	1,702	720,155	559,738	160,417
Chautauqua	3,795	1,617,794	1,309,252	308,542
Chemung	2,741	1,134,950	939,079	195,871
Chenango	1,291	490,749	410,394	80,355
Clinton	2,433	985,228	802,303	182,925
Columbia	1,488	593,979	448,036	145,943
Cortland	1,193	514,524	417,051	97,473
Delaware	1,145	434,035	345,025	89,010
Dutchess	4,299	1,830,307	1,380,391	449,916
Erie	24,893	11,049,512	9,025,321	2,024,191
Essex	933	362,521	267,323	95,198
Franklin	1,592	636,008	502,763	133,245
Fulton	1,641	725,644	583,690	141,954
Genesee	960	374,932	288,941	85,991
Greene	1,039	406,179	321,167	85,012
Hamilton	74	32,442	26,896	5,546
Herkimer	1,553	589,446	470,975	118,471
Jefferson	2,799	1,213,659	985,906	227,753
Lewis	644	248,619	202,207	46,412
Livingston	938	376,210	309,657	66,553
Madison	1,207	454,529	350,004	104,525
Monroe	17,087	7,621,982	6,211,344	1,410,638
Montgomery	1,271	502,270	404,719	97,551
Nassau	16,642	6,846,584	5,324,004	1,522,580
Niagara	4,759	1,995,370	1,599,933	395,437
Oneida	7,034	2,986,197	2,447,870	538,327
Onondaga	11,000	4,866,483	4,051,664	814,819
Ontario	1,470	604,422	482,539	121,883
Orange	5,907	2,486,826	2,026,218	460,608
Orleans	900	348,742	286,722	62,020
Oswego	2,851	1,214,618	1,024,140	190,478
Otsego	1,273	498,688	375,128	123,560
Putnam	724	315,865	229,096	86,769
Rensselaer	3,073	1,274,814	1,009,449	265,365
Rockland	4,304	1,811,901	1,308,577	503,324
St.Lawrence	3,573	1,470,440	1,224,298	246,142
Saratoga	2,448	934,326	737,773	196,553
Schenectady	3,621	1,550,667	1,251,294	299,373
Schoharie	702	269,197	196,642	72,555
Schuyler	504	198,387	153,838	44,549
Seneca	704	270,068	214,440	55,628
Steuben	2,786	1,163,211	962,987	200,224
Suffolk	20,687	8,692,955	6,622,811	2,070,144
Sullivan	2,482	1,045,809	766,732	279,077
Tioga	967	400,472	340,384	60,088
Tompkins	1,460	612,748	480,890	131,858
Ulster	3,950	1,699,897	1,357,498	342,399
Warren	1,436	526,905	424,533	102,372
Washington	1,399	532,983	429,734	103,249
Wayne	1,778	705,983	572,622	133,361
Westchester	14,311	6,128,194	4,921,610	1,206,584
Wyoming	613	231,460	186,330	45,130
Yates	452	160,929	124,190	36,739
Mental Hygiene	10,575	3,606,140	2,353,719	1,252,421

\* Only NYS includes Mental Hygiene

Table 18  
**SUPPLEMENTAL SECURITY INCOME**  
 SSI Recipients by Living Arrangement and Location  
 January 2001

Living Arrangement	New York State	New York City	Rest of State	Mental Hygiene
Living Alone	321,409	220,287	101,068	54
Living With Others	208,979	131,343	77,605	31
Living in Household of Another	24,611	15,635	8,973	3
Congregate Care Level I	6,039	601	506	4,932
Congregate Care Level II	36,270	14,124	21,658	488
Congregate Care Level III	272	74	198	0
Title XIX Institution	20,635	10,046	5,522	5,067
Total	618,215	392,110	215,530	10,575

Table 19  
**SUPPLEMENTAL SECURITY INCOME**  
 SSI Recipients by Living Arrangement and Category of Assistance  
 January 2001

Living Arrangement	Total	Category of Assistance		
		Aged	Blind	Disabled
Living Alone	321,409	101,657	1,743	218,009
Living With Others	208,979	17,645	1,136	190,198
Living in Household of Another	24,611	10,380	163	14,068
Congregate Care Level I	6,039	356	34	5,649
Congregate Care Level II	36,270	5,509	182	30,579
Congregate Care Level III	272	0	1	271
Title XIX Institution	20,635	3,497	119	17,019
Total	618,215	139,044	3,378	475,793

Table 20  
CHILD SUPPORT COLLECTIONS (IV-D)  
January 2001

Local District	Total	Current Assistance	Former Assistance	Never Assistance
New York State	\$90,262,536	\$9,804,538	\$33,675,399	\$46,782,599
New York City	32,883,827	6,105,711	12,992,113	13,786,003
Rest of State	57,378,709	3,698,827	20,683,286	32,996,596
Albany	1,674,783	79,564	536,469	1,058,750
Allegany	350,436	29,713	187,318	133,405
Broome	1,065,496	58,575	425,967	580,954
Cattaraugus	610,271	51,251	296,449	262,571
Cayuga	536,797	18,428	191,758	326,611
Chautauqua	988,765	88,101	578,349	322,315
Chemung	696,473	39,070	274,423	382,980
Chenango	382,046	18,383	124,972	238,691
Clinton	535,119	15,174	229,612	290,333
Columbia	359,741	18,169	135,157	206,415
Cortland	319,022	13,637	121,867	183,518
Delaware	321,587	12,980	119,374	189,233
Dutchess	1,651,945	65,844	454,613	1,131,488
Erie	4,085,588	375,366	2,073,912	1,636,310
Essex	242,985	9,315	132,346	101,324
Franklin	405,306	12,931	181,926	210,449
Fulton	420,824	14,773	164,102	241,949
Genesee	382,125	17,206	136,044	228,875
Greene	311,149	13,582	109,739	187,828
Hamilton	29,952	1,209	12,178	16,565
Herkimer	461,024	17,754	206,486	236,784
Jefferson	772,555	44,033	303,269	425,253
Lewis	187,862	4,225	67,404	116,233
Livingston	471,523	21,941	167,929	281,653
Madison	383,292	12,389	157,140	213,763
Monroe	3,921,238	470,451	1,654,567	1,796,220
Montgomery	355,921	16,946	147,566	191,409
Nassau	4,830,239	224,139	1,122,226	3,483,874
Niagara	1,285,452	107,666	659,810	517,976
Oneida	1,036,535	85,277	500,230	451,028
Onondaga	2,766,806	175,694	1,246,117	1,344,995
Ontario	748,168	32,142	236,752	479,274
Orange	1,886,377	116,884	498,099	1,271,394
Orleans	252,492	16,868	132,478	103,146
Oswego	904,324	40,552	430,240	433,532
Otsego	337,328	9,197	85,424	242,707
Putnam	427,232	4,792	83,664	338,776
Rensselaer	1,072,929	47,729	375,730	649,470
Rockland	1,305,752	59,178	337,515	909,059
St. Lawrence	703,968	41,205	334,272	328,491
Saratoga	1,076,400	21,719	216,086	838,595
Schenectady	929,053	44,500	275,327	609,226
Schoharie	217,111	11,302	81,140	124,669
Schuyler	111,025	3,799	36,696	70,530
Seneca	245,525	8,860	76,021	160,644
Steuben	611,587	38,097	286,940	286,550
Suffolk	7,097,335	475,103	2,016,326	4,605,906
Sullivan	413,776	30,258	159,511	224,007
Tioga	330,372	18,547	152,222	159,603
Tompkins	440,272	25,610	179,621	235,041
Ulster	959,027	45,313	304,258	609,456
Warren	551,151	17,768	176,057	357,326
Washington	463,542	15,849	159,350	288,343
Wayne	651,033	19,343	197,760	433,930
Westchester	3,386,693	402,121	970,388	2,014,184
Wyoming	271,029	12,096	105,359	153,574
Yates	142,351	6,209	56,731	79,411

Note: Effective February 1999, collection amounts include collections made on behalf of other states.