



NEW YORK STATE  
OFFICE OF TEMPORARY AND DISABILITY ASSISTANCE  
40 North Pearl Street, Albany, New York 12243-0001

George E. Pataki  
*Governor*

Brian J. Wing  
*Commissioner*

---

## Temporary and Disability Assistance Statistics February 2001

---

### Temporary Assistance

Recipients of Temporary Assistance totaled 724,063 in February 2001, decreasing 12,550 (-1.7%) from the previous month. Temporary Assistance expenditures in February 2001 totaled \$152,871,157, decreasing \$3.9 million (-2.5%) from the previous month.

### Food Stamps

Food Stamps recipients totaled 1,320,325 in February 2001, decreasing 8,229 (-0.6%) from January 2001. February Food Stamps expenditures totaled \$109,548,105, decreasing \$1.7 million (-1.5%) from the previous month.

### Supplemental Security Income

SSI recipients (including Mental Hygiene) totaled 622,119 in February 2001, increasing 3,904 (+0.6%) over the previous month, with SSI expenditures totaling \$281,539,856 in February 2001, increasing \$2.9 million (+1.1%) over January 2001 expenditures.



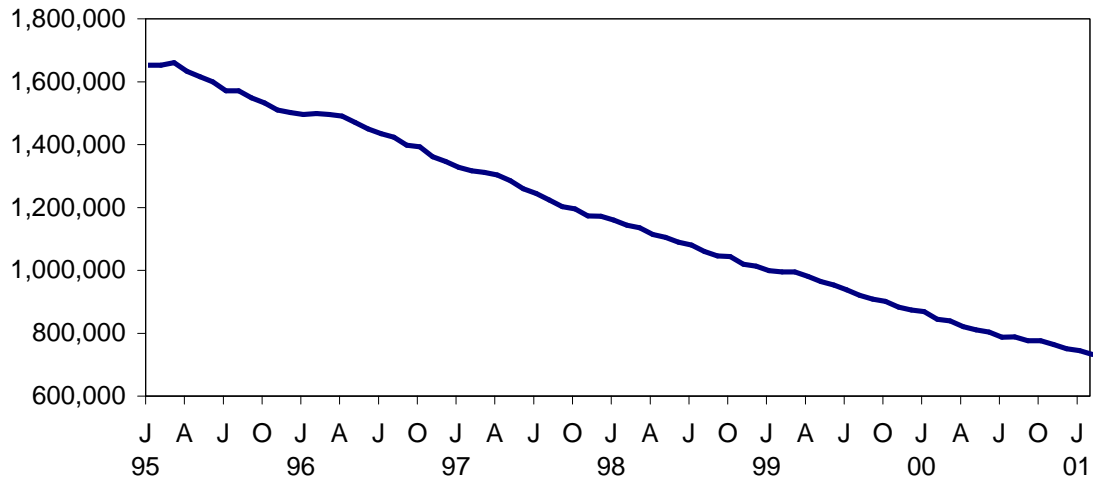
# Table of Contents

## Page Number

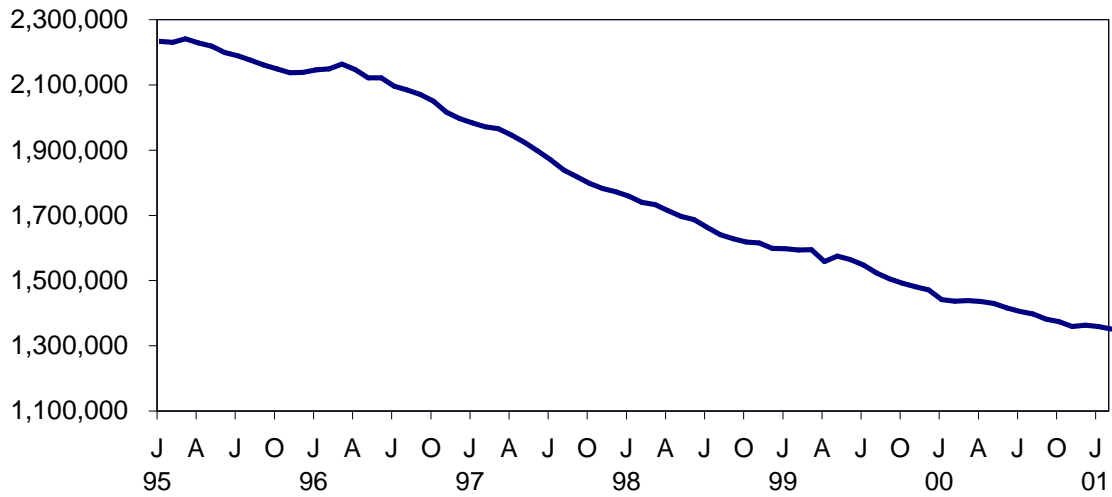
Graphs .....	4
Summary Tables.....	5
Temporary Assistance by Program Area .....	6
Temporary Assistance by Funding Source .....	10
Other Programs .....	18

# NEW YORK STATE JANUARY 1995 - FEBRUARY 2001

## TEMPORARY ASSISTANCE RECIPIENTS

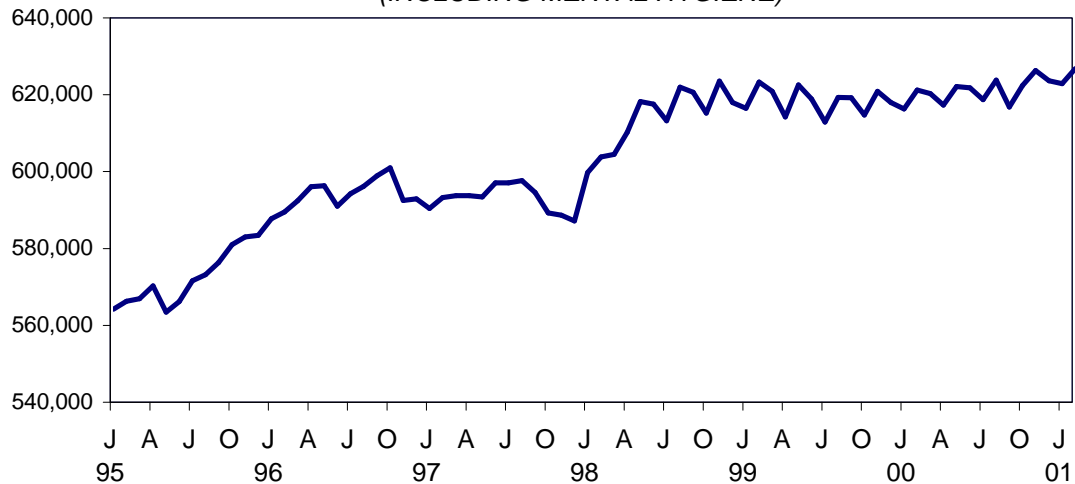


## FOOD STAMPS PERSONS



## SSI PERSONS

(INCLUDING MENTAL HYGIENE)



SELECTED SUMMARY PROGRAM DATA  
BY REGION

Table 1  
TEMPORARY AND DISABILITY ASSISTANCE CASES  
February 2001

Region	Cases				
	Temporary Assistance by Program			Supplemental Security Income	Food Stamps
	Total	Family Assistance	Safety Net Assistance		
New York State	337,989	226,708	111,281	611,528	662,949
New York City	246,337	163,880	82,457	394,306	429,637
Rest of State	91,652	62,828	28,824	217,222	233,312

Table 2  
TEMPORARY AND DISABILITY ASSISTANCE RECIPIENTS  
February 2001

Region	Recipients				
	Temporary Assistance by Program			Supplemental Security Income	Food Stamps
	Total	Family Assistance	Safety Net Assistance		
New York State	724,063	604,809	119,254	611,528	1,320,325
New York City	522,713	435,499	87,214	394,306	838,315
Rest of State	201,350	169,310	32,040	217,222	482,010

Table 3  
TEMPORARY AND DISABILITY ASSISTANCE EXPENDITURES  
February 2001

Region	Expenditures				
	Temporary Assistance by Program			Supplemental Security Income	Food Stamps
	Total	Family Assistance	Safety Net Assistance		
New York State	\$152,871,157	\$116,251,398	\$36,619,759	\$277,912,005	\$109,548,105
New York City	103,932,000	80,869,000	23,063,000	185,139,315	75,005,857
Rest of State	48,939,157	35,382,398	13,556,759	92,772,690	34,542,248

Note: SSI data listed here do not include Mental Hygiene data. See Tables 17 - 19 for total SSI data.

Table 4  
**TEMPORARY ASSISTANCE**  
 Year to Year Monthly Comparison by Local District  
 Cases, Recipients and Expenditures  
 February 2001

Local District	February 2001			February 2000			February 1999		
	Cases	Recipients	Expenditures	Cases	Recipients	Expenditures	Cases	Recipients	Expenditures
New York State	337,989	724,063	\$152,871,157	384,074	836,346	\$ 170,729,485	441,168	986,276	\$ 190,471,742
New York City*	246,337	522,713	103,932,000	277,809	598,910	116,739,000	317,436	700,591	129,050,000
Rest of State	91,652	201,350	48,939,157	106,265	237,436	53,990,485	123,732	285,685	61,421,742
Albany	3,205	7,205	1,774,307	3,437	7,854	1,839,533	3,712	8,926	1,992,510
Allegany	499	1,146	194,360	615	1,438	234,203	800	1,965	336,619
Broome	1,999	4,334	925,059	2,377	5,435	1,047,861	2,826	6,731	1,363,612
Cattaraugus	600	1,295	255,874	714	1,518	274,397	896	2,070	350,017
Cayuga	419	923	199,364	431	968	184,105	527	1,199	214,861
Chautauqua	2,038	4,345	870,800	2,195	4,872	922,165	2,403	5,664	1,069,954
Chemung	828	1,884	360,489	967	2,278	361,222	1,102	2,595	395,634
Chenango	242	524	111,148	263	586	104,456	358	917	138,265
Clinton	547	1,052	228,693	604	1,194	245,383	666	1,438	239,982
Columbia	377	720	158,575	407	820	179,553	579	1,266	228,767
Cortland	410	900	182,253	431	998	222,372	495	1,240	241,979
Delaware	191	356	74,599	228	447	100,006	231	472	101,684
Dutchess	1,304	2,550	668,842	1,527	3,143	771,730	1,841	3,955	877,402
Erie	14,569	32,633	6,335,249	17,658	39,577	7,489,314	21,431	48,986	9,277,650
Essex	216	423	84,260	251	502	99,648	314	693	118,262
Franklin	305	630	122,582	379	718	143,074	541	1,113	183,742
Fulton	378	697	159,324	441	941	209,876	509	1,150	186,606
Genesee	281	614	119,987	280	610	115,553	293	720	151,400
Greene	394	784	180,533	423	886	172,393	485	1,090	207,896
Hamilton	11	20	3,131	15	22	7,047	21	44	7,205
Herkimer	318	647	128,490	393	883	166,891	428	1,008	165,034
Jefferson	1,053	2,157	480,664	1,232	2,625	507,878	1,564	3,439	660,078
Lewis	119	250	53,511	153	328	58,603	195	409	73,384
Livingston	526	1,003	231,456	476	1,010	220,925	627	1,281	276,117
Madison	181	328	77,718	185	340	80,126	210	441	88,222
Monroe	14,676	33,575	8,205,782	17,097	39,435	9,874,646	18,610	44,071	9,430,168
Montgomery	291	601	141,522	301	657	147,662	370	812	156,529
Nassau	4,453	9,087	2,431,069	5,333	10,951	3,115,790	6,269	13,115	3,260,337
Niagara	2,460	5,124	989,390	2,894	5,991	1,198,471	3,438	7,618	1,460,575
Oneida	2,331	5,835	1,155,981	2,802	7,030	1,368,900	3,360	8,618	1,582,500
Onondaga	5,586	12,718	2,611,777	6,214	14,374	2,773,631	7,150	17,513	3,360,814
Ontario	558	1,048	257,895	548	1,069	253,016	676	1,462	290,250
Orange	2,882	7,574	1,766,114	3,034	7,896	1,617,996	3,229	8,708	1,664,616
Orleans	486	1,104	213,318	474	1,105	203,300	466	1,055	206,027
Oswego	797	1,800	370,149	900	2,156	417,805	1,166	2,858	496,342
Otsego	104	185	62,790	112	210	56,500	167	330	63,452
Putnam	107	192	113,942	126	216	111,958	142	256	107,888
Rensselaer	1,137	2,461	605,022	1,329	2,980	602,951	1,393	3,259	643,364
Rockland	1,136	3,354	670,426	1,347	3,815	792,454	1,548	4,380	892,874
St.Lawrence	1,040	2,139	390,163	1,264	2,657	506,485	1,583	3,454	609,957
Saratoga	236	368	112,853	269	455	119,000	290	509	115,261
Schenectady	980	2,199	453,437	1,173	2,735	545,350	1,314	3,256	653,210
Schoharie	92	144	68,063	109	196	56,706	126	268	63,879
Schuyler	116	231	44,880	106	226	43,316	150	302	61,276
Seneca	186	367	72,176	179	364	73,849	188	412	74,299
Steuben	821	1,652	348,720	1,115	2,364	451,260	1,366	3,168	563,566
Suffolk	6,744	13,926	4,511,030	7,547	16,323	4,813,007	9,143	20,320	5,552,291
Sullivan	593	1,131	246,774	566	1,269	251,947	714	1,719	328,841
Tioga	279	576	116,420	336	738	133,746	405	970	163,998
Tompkins	678	1,316	346,168	698	1,372	316,727	787	1,563	433,800
Ulster	1,166	2,401	607,792	1,366	2,736	672,823	1,721	3,657	835,749
Warren	272	545	122,472	261	488	127,424	267	590	105,997
Washington	334	613	161,904	359	700	164,834	507	1,066	219,170
Wayne	461	874	203,725	577	1,248	254,547	729	1,636	313,570
Westchester	9,371	20,286	7,436,062	11,465	25,107	7,053,848	13,089	29,303	8,642,318
Wyoming	187	350	89,886	180	365	72,143	205	407	79,813
Yates	82	154	30,187	102	215	40,079	110	218	42,129

\* Expenditures partially estimated.

Table 5  
**TEMPORARY ASSISTANCE**  
Cases, Recipients, Children, Adults and Expenditures by Local District  
February 2001

Local District	Temporary Assistance				
	Cases	Recipients	Children	Adults	Expenditures
New York State	337,989	724,063	427,086	296,977	\$152,871,157
New York City*	246,337	522,713	302,036	220,677	103,932,000
Rest of State	91,652	201,350	125,050	76,300	48,939,157
Albany	3,205	7,205	4,432	2,773	1,774,307
Allegany	499	1,146	704	442	194,360
Broome	1,999	4,334	2,677	1,657	925,059
Cattaraugus	600	1,295	836	459	255,874
Cayuga	419	923	597	326	199,364
Chautauqua	2,038	4,345	2,594	1,751	870,800
Chemung	828	1,884	1,267	617	360,489
Chenango	242	524	353	171	111,148
Clinton	547	1,052	640	412	228,693
Columbia	377	720	442	278	158,575
Cortland	410	900	523	377	182,253
Delaware	191	356	230	126	74,599
Dutchess	1,304	2,550	1,664	886	668,842
Erie	14,569	32,633	19,826	12,807	6,335,249
Essex	216	423	235	188	84,260
Franklin	305	630	383	247	122,582
Fulton	378	697	391	306	159,324
Genesee	281	614	391	223	119,987
Greene	394	784	465	319	180,533
Hamilton	11	20	12	8	3,131
Herkimer	318	647	412	235	128,490
Jefferson	1,053	2,157	1,193	964	480,664
Lewis	119	250	148	102	53,511
Livingston	526	1,003	493	510	231,456
Madison	181	328	228	100	77,718
Monroe	14,676	33,575	20,964	12,611	8,205,782
Montgomery	291	601	367	234	141,522
Nassau	4,453	9,087	5,948	3,139	2,431,069
Niagara	2,460	5,124	3,132	1,992	989,390
Oneida	2,331	5,835	3,800	2,035	1,155,981
Onondaga	5,586	12,718	8,238	4,480	2,611,777
Ontario	558	1,048	587	461	257,895
Orange	2,882	7,574	5,098	2,476	1,766,114
Orleans	486	1,104	666	438	213,318
Oswego	797	1,800	1,202	598	370,149
Otsego	104	185	127	58	62,790
Putnam	107	192	119	73	113,942
Rensselaer	1,137	2,461	1,498	963	605,022
Rockland	1,136	3,354	2,254	1,100	670,426
St.Lawrence	1,040	2,139	1,246	893	390,163
Saratoga	236	368	278	90	112,853
Schenectady	980	2,199	1,545	654	453,437
Schoharie	92	144	86	58	68,063
Schuyler	116	231	149	82	44,880
Seneca	186	367	222	145	72,176
Steuben	821	1,652	954	698	348,720
Suffolk	6,744	13,926	8,650	5,276	4,511,030
Sullivan	593	1,131	706	425	246,774
Tioga	279	576	363	213	116,420
Tompkins	678	1,316	728	588	346,168
Ulster	1,166	2,401	1,593	808	607,792
Warren	272	545	302	243	122,472
Washington	334	613	359	254	161,904
Wayne	461	874	556	318	203,725
Westchester	9,371	20,286	11,895	8,391	7,436,062
Wyoming	187	350	196	154	89,886
Yates	82	154	86	68	30,187

\* Expenditures partially estimated.

Table 6  
**FAMILY ASSISTANCE**  
Cases, Recipients, Children, Adults and Expenditures by Local District  
February 2001

Local District	Family Assistance				
	Cases	Recipients	Children	Adults	Expenditures
New York State	226,708	604,809	421,750	183,059	\$116,251,398
New York City*	163,880	435,499	299,995	135,504	80,869,000
Rest of State	62,828	169,310	121,755	47,555	35,382,398
Albany	2,396	6,345	4,377	1,968	1,291,692
Allegany	388	1,033	701	332	162,176
Broome	1,390	3,661	2,613	1,048	635,776
Cattaraugus	448	1,132	828	304	192,919
Cayuga	321	817	589	228	142,276
Chautauqua	1,433	3,696	2,544	1,152	683,893
Chemung	649	1,689	1,243	446	259,777
Chenango	190	470	351	119	85,211
Clinton	370	863	630	233	147,296
Columbia	258	599	437	162	108,706
Cortland	294	773	512	261	135,055
Delaware	137	298	227	71	59,171
Dutchess	876	2,052	1,565	487	465,615
Erie	10,034	27,911	19,684	8,227	4,606,237
Essex	147	350	231	119	59,032
Franklin	215	535	379	156	84,229
Fulton	240	543	380	163	99,938
Genesee	195	520	378	142	80,885
Greene	285	672	459	213	135,336
Hamilton	8	17	12	5	2,452
Herkimer	224	547	405	142	97,519
Jefferson	674	1,748	1,172	576	324,609
Lewis	89	217	143	74	42,081
Livingston	326	783	478	305	147,558
Madison	130	272	222	50	52,104
Monroe	9,677	27,375	19,770	7,605	5,774,869
Montgomery	180	487	366	121	82,815
Nassau	3,087	7,550	5,760	1,790	1,747,067
Niagara	1,720	4,306	3,049	1,257	702,097
Oneida	1,680	5,084	3,711	1,373	871,556
Onondaga	4,010	11,020	8,067	2,953	2,005,288
Ontario	343	819	569	250	156,362
Orange	2,176	6,810	5,049	1,761	1,377,012
Orleans	365	976	659	317	167,680
Oswego	620	1,606	1,176	430	265,714
Otsego	69	145	121	24	34,937
Putnam	61	140	111	29	76,935
Rensselaer	855	2,171	1,492	679	428,146
Rockland	740	2,907	2,215	692	433,761
St.Lawrence	749	1,835	1,235	600	292,621
Saratoga	166	293	268	25	71,772
Schenectady	717	1,885	1,487	398	332,910
Schoharie	58	107	85	22	31,378
Schuyler	85	199	146	53	35,353
Seneca	132	303	210	93	50,575
Steuben	553	1,369	943	426	237,192
Suffolk	4,140	11,014	8,299	2,715	3,431,711
Sullivan	391	915	687	228	178,485
Tioga	232	523	359	164	98,434
Tompkins	431	1,041	704	337	208,949
Ulster	859	2,026	1,517	509	451,381
Warren	170	438	297	141	78,281
Washington	220	493	349	144	103,132
Wayne	299	698	535	163	136,250
Westchester	6,159	16,834	11,686	5,148	5,344,343
Wyoming	115	274	188	86	53,613
Yates	52	124	85	39	20,236

\* Expenditures partially estimated.



Table 7  
SAFETY NET ASSISTANCE  
Cases, Recipients, Children, Adults and Expenditures by Local District  
February 2001

Local District	Safety Net Assistance				
	Cases	Recipients	Children	Adults	Expenditures
New York State	111,281	119,254	5,336	113,918	\$36,619,759
New York City*	82,457	87,214	2,041	85,173	23,063,000
Rest of State	28,824	32,040	3,295	28,745	13,556,759
Albany	809	860	55	805	482,615
Allegany	111	113	3	110	32,184
Broome	609	673	64	609	289,283
Cattaraugus	152	163	8	155	62,955
Cayuga	98	106	8	98	57,088
Chautauqua	605	649	50	599	186,907
Chemung	179	195	24	171	100,712
Chenango	52	54	2	52	25,937
Clinton	177	189	10	179	81,397
Columbia	119	121	5	116	49,869
Cortland	116	127	11	116	47,198
Delaware	54	58	3	55	15,428
Dutchess	428	498	99	399	203,227
Erie	4,535	4,722	142	4,580	1,729,012
Essex	69	73	4	69	25,228
Franklin	90	95	4	91	38,353
Fulton	138	154	11	143	59,386
Genesee	86	94	13	81	39,102
Greene	109	112	6	106	45,197
Hamilton	3	3	0	3	679
Herkimer	94	100	7	93	30,971
Jefferson	379	409	21	388	156,055
Lewis	30	33	5	28	11,430
Livingston	200	220	15	205	83,898
Madison	51	56	6	50	25,614
Monroe	4,999	6,200	1,194	5,006	2,430,913
Montgomery	111	114	1	113	58,707
Nassau	1,366	1,537	188	1,349	684,002
Niagara	740	818	83	735	287,293
Oneida	651	751	89	662	284,425
Onondaga	1,576	1,698	171	1,527	606,489
Ontario	215	229	18	211	101,533
Orange	706	764	49	715	389,102
Orleans	121	128	7	121	45,638
Oswego	177	194	26	168	104,435
Otsego	35	40	6	34	27,853
Putnam	46	52	8	44	37,007
Rensselaer	282	290	6	284	176,876
Rockland	396	447	39	408	236,665
St.Lawrence	291	304	11	293	97,542
Saratoga	70	75	10	65	41,081
Schenectady	263	314	58	256	120,527
Schoharie	34	37	1	36	36,685
Schuyler	31	32	3	29	9,527
Seneca	54	64	12	52	21,601
Steuben	268	283	11	272	111,528
Suffolk	2,604	2,912	351	2,561	1,079,319
Sullivan	202	216	19	197	68,289
Tioga	47	53	4	49	17,986
Tompkins	247	275	24	251	137,219
Ulster	307	375	76	299	156,411
Warren	102	107	5	102	44,191
Washington	114	120	10	110	58,772
Wayne	162	176	21	155	67,475
Westchester	3,212	3,452	209	3,243	2,091,719
Wyoming	72	76	8	68	36,273
Yates	30	30	1	29	9,951

\* Expenditures partially estimated.

Table 8  
 TEMPORARY ASSISTANCE BY FUNDING SOURCE  
 Cases, Recipients and Expenditures by Local District  
 February 2001

Local District	Total			Federally Participating - TANF Family Assistance and Safety Net - FP			Federally Non-Participating Safety Net Assistance - FNP		
	Cases	Recipients	Expenditures	Cases	Recipients	Expenditures	Cases	Recipients	Expenditures
New York State	337,989	724,063	\$152,871,157	228,109	608,669	\$117,123,906	109,880	115,394	\$35,747,251
New York City*	246,337	522,713	103,932,000	164,066	435,981	80,917,000	82,271	86,732	23,015,000
Rest of State	91,652	201,350	48,939,157	64,043	172,688	36,206,906	27,609	28,662	12,732,251
Albany	3,205	7,205	1,774,307	2,424	6,413	1,308,986	781	792	465,321
Allegany	499	1,146	194,360	388	1,033	162,176	111	113	32,184
Broome	1,999	4,334	925,059	1,423	3,729	652,408	576	605	272,651
Cattaraugus	600	1,295	255,874	449	1,134	193,119	151	161	62,755
Cayuga	419	923	199,364	324	828	144,124	95	95	55,240
Chautauqua	2,038	4,345	870,800	1,452	3,745	695,804	586	600	174,996
Chemung	828	1,884	360,489	652	1,698	262,153	176	186	98,336
Chenango	242	524	111,148	190	470	85,211	52	54	25,937
Clinton	547	1,052	228,693	374	874	148,939	173	178	79,754
Columbia	377	720	158,575	258	599	108,706	119	121	49,869
Cortland	410	900	182,253	297	782	136,649	113	118	45,604
Delaware	191	356	74,599	138	301	59,290	53	55	15,309
Dutchess	1,304	2,550	668,842	901	2,121	477,189	403	429	191,653
Erie	14,569	32,633	6,335,249	10,048	27,955	4,614,500	4,521	4,678	1,720,749
Essex	216	423	84,260	148	352	59,170	68	71	25,090
Franklin	305	630	122,582	216	539	85,277	89	91	37,305
Fulton	378	697	159,324	245	558	102,544	133	139	56,780
Genesee	281	614	119,987	196	525	80,945	85	89	39,042
Greene	394	784	180,533	285	672	135,336	109	112	45,197
Hamilton	11	20	3,131	8	17	2,452	3	3	679
Herkimer	318	647	128,490	228	555	98,748	90	92	29,742
Jefferson	1,053	2,157	480,664	692	1,783	331,732	361	374	148,932
Lewis	119	250	53,511	90	218	42,305	29	32	11,206
Livingston	526	1,003	231,456	336	806	152,753	190	197	78,703
Madison	181	328	77,718	132	277	52,585	49	51	25,133
Monroe	14,676	33,575	8,205,782	10,227	28,956	6,166,637	4,449	4,619	2,039,145
Montgomery	291	601	141,522	180	487	82,815	111	114	58,707
Nassau	4,453	9,087	2,431,069	3,158	7,742	1,790,337	1,295	1,345	640,732
Niagara	2,460	5,124	989,390	1,767	4,422	724,225	693	702	265,165
Oneida	2,331	5,835	1,155,981	1,707	5,162	890,277	624	673	265,704
Onondaga	5,586	12,718	2,611,777	4,041	11,102	2,024,680	1,545	1,616	587,097
Ontario	558	1,048	257,895	349	833	160,281	209	215	97,614
Orange	2,882	7,574	1,766,114	2,203	6,872	1,395,067	679	702	371,047
Orleans	486	1,104	213,318	365	976	167,680	121	128	45,638
Oswego	797	1,800	370,149	627	1,627	267,865	170	173	102,284
Otsego	104	185	62,790	71	152	36,286	33	33	26,504
Putnam	107	192	113,942	63	145	80,752	44	47	33,190
Rensselaer	1,137	2,461	605,022	857	2,175	428,798	280	286	176,224
Rockland	1,136	3,354	670,426	755	2,954	441,846	381	400	228,580
St. Lawrence	1,040	2,139	390,163	754	1,849	295,008	286	290	95,155
Saratoga	236	368	112,853	168	298	72,237	68	70	40,616
Schenectady	980	2,199	453,437	739	1,946	342,124	241	253	111,313
Schoharie	92	144	68,063	59	108	31,508	33	36	36,555
Schuyler	116	231	44,880	85	199	35,353	31	32	9,527
Seneca	186	367	72,176	139	319	53,359	47	48	18,817
Steuben	821	1,652	348,720	557	1,377	239,254	264	275	109,466
Suffolk	6,744	13,926	4,511,030	4,239	11,320	3,529,564	2,505	2,606	981,466
Sullivan	593	1,131	246,774	397	932	184,041	196	199	62,733
Tioga	279	576	116,420	234	528	99,178	45	48	17,242
Tompkins	678	1,316	346,168	443	1,063	217,351	235	253	128,817
Ulster	1,166	2,401	607,792	893	2,119	469,670	273	282	138,122
Warren	272	545	122,472	170	438	78,281	102	107	44,191
Washington	334	613	161,904	223	496	104,715	111	117	57,189
Wayne	461	874	203,725	303	711	141,144	158	163	62,581
Westchester	9,371	20,286	7,436,062	6,208	16,995	5,388,846	3,163	3,291	2,047,216
Wyoming	187	350	89,886	116	277	54,390	71	73	35,496
Yates	82	154	30,187	52	124	20,236	30	30	9,951

\* Expenditures partially estimated.

Table 9  
 TEMPORARY ASSISTANCE TO NEEDY FAMILIES (TANF) - FP BY PROGRAM  
 Cases, Recipients, Children, Adults and Expenditures by Local District  
 February 2001

Local District	Family Assistance					Safety Net Assistance - FP				
	Cases	Recipients	Children	Adults	Expenditures	Cases	Recipients	Children	Adults	Expenditures
New York State	226,708	604,809	421,750	183,059	\$116,251,398	1,401	3,860	2,403	1,457	\$872,508
New York City*	163,880	435,499	299,995	135,504	80,869,000	186	482	267	215	48,000
Rest of State	62,828	169,310	121,755	47,555	35,382,398	1,215	3,378	2,136	1,242	824,508
Albany	2,396	6,345	4,377	1,968	1,291,692	28	68	39	29	17,294
Allegany	388	1,033	701	332	162,176	0	0	0	0	0
Broome	1,390	3,661	2,613	1,048	635,776	33	68	33	35	16,632
Cattaraugus	448	1,132	828	304	192,919	1	2	1	1	200
Cayuga	321	817	589	228	142,276	3	11	7	4	1,848
Chautauqua	1,433	3,696	2,544	1,152	683,893	19	49	33	16	11,911
Chemung	649	1,689	1,243	446	259,777	3	9	6	3	2,376
Chenango	190	470	351	119	85,211	0	0	0	0	0
Clinton	370	863	630	233	147,296	4	11	7	4	1,643
Columbia	258	599	437	162	108,706	0	0	0	0	0
Cortland	294	773	512	261	135,055	3	9	6	3	1,594
Delaware	137	298	227	71	59,171	1	3	2	1	119
Dutchess	876	2,052	1,565	487	465,615	25	69	45	24	11,574
Erie	10,034	27,911	19,684	8,227	4,606,237	14	44	26	18	8,263
Essex	147	350	231	119	59,032	1	2	1	1	138
Franklin	215	535	379	156	84,229	1	4	2	2	1,048
Fulton	240	543	380	163	99,938	5	15	8	7	2,606
Genesee	195	520	378	142	80,885	1	5	4	1	60
Greene	285	672	459	213	135,336	0	0	0	0	0
Hamilton	8	17	12	5	2,452	0	0	0	0	0
Herkimer	224	547	405	142	97,519	4	8	4	4	1,229
Jefferson	674	1,748	1,172	576	324,609	18	35	17	18	7,123
Lewis	89	217	143	74	42,081	1	1	0	1	224
Livingston	326	783	478	305	147,558	10	23	11	12	5,195
Madison	130	272	222	50	52,104	2	5	3	2	481
Monroe	9,677	27,375	19,770	7,605	5,774,869	550	1,581	1,030	551	391,768
Montgomery	180	487	366	121	82,815	0	0	0	0	0
Nassau	3,087	7,550	5,760	1,790	1,747,067	71	192	120	72	43,270
Niagara	1,720	4,306	3,049	1,257	702,097	47	116	71	45	22,128
Oneida	1,680	5,084	3,711	1,373	871,556	27	78	49	29	18,721
Onondaga	4,010	11,020	8,067	2,953	2,005,288	31	82	48	34	19,392
Ontario	343	819	569	250	156,362	6	14	9	5	3,919
Orange	2,176	6,810	5,049	1,761	1,377,012	27	62	34	28	18,055
Orleans	365	976	659	317	167,680	0	0	0	0	0
Oswego	620	1,606	1,176	430	265,714	7	21	16	5	2,151
Otsego	69	145	121	24	34,937	2	7	5	2	1,349
Putnam	61	140	111	29	76,935	2	5	3	2	3,817
Rensselaer	855	2,171	1,492	679	428,146	2	4	2	2	652
Rockland	740	2,907	2,215	692	433,761	15	47	32	15	8,085
St.Lawrence	749	1,835	1,235	600	292,621	5	14	6	8	2,387
Saratoga	166	293	268	25	71,772	2	5	3	2	465
Schenectady	717	1,885	1,487	398	332,910	22	61	37	24	9,214
Schoharie	58	107	85	22	31,378	1	1	0	1	130
Schuyler	85	199	146	53	35,353	0	0	0	0	0
Seneca	132	303	210	93	50,575	7	16	9	7	2,784
Steuben	553	1,369	943	426	237,192	4	8	4	4	2,062
Suffolk	4,140	11,014	8,299	2,715	3,431,711	99	306	202	104	97,853
Sullivan	391	915	687	228	178,485	6	17	11	6	5,556
Tioga	232	523	359	164	98,434	2	5	2	3	744
Tompkins	431	1,041	704	337	208,949	12	22	10	12	8,402
Ulster	859	2,026	1,517	509	451,381	34	93	59	34	18,289
Warren	170	438	297	141	78,281	0	0	0	0	0
Washington	220	493	349	144	103,132	3	3	2	1	1,583
Wayne	299	698	535	163	136,250	4	13	9	4	4,894
Westchester	6,159	16,834	11,686	5,148	5,344,343	49	161	106	55	44,503
Wyoming	115	274	188	86	53,613	1	3	2	1	777
Yates	52	124	85	39	20,236	0	0	0	0	0

\* Expenditures partially estimated.

Table 10  
SAFETY NET ASSISTANCE - FNP  
Cases, Recipients, Children, Adults and Expenditures by Local District  
February 2001

Local District	Safety Net Assistance - FNP				
	Cases	Recipients	Children	Adults	Expenditures
New York State	109,880	115,394	2,933	112,461	\$35,747,251
New York City*	82,271	86,732	1,774	84,958	23,015,000
Rest of State	27,609	28,662	1,159	27,503	12,732,251
Albany	781	792	16	776	465,321
Allegany	111	113	3	110	32,184
Broome	576	605	31	574	272,651
Cattaraugus	151	161	7	154	62,755
Cayuga	95	95	1	94	55,240
Chautauqua	586	600	17	583	174,996
Chemung	176	186	18	168	98,336
Chenango	52	54	2	52	25,937
Clinton	173	178	3	175	79,754
Columbia	119	121	5	116	49,869
Cortland	113	118	5	113	45,604
Delaware	53	55	1	54	15,309
Dutchess	403	429	54	375	191,653
Erie	4,521	4,678	116	4,562	1,720,749
Essex	68	71	3	68	25,090
Franklin	89	91	2	89	37,305
Fulton	133	139	3	136	56,780
Genesee	85	89	9	80	39,042
Greene	109	112	6	106	45,197
Hamilton	3	3	0	3	679
Herkimer	90	92	3	89	29,742
Jefferson	361	374	4	370	148,932
Lewis	29	32	5	27	11,206
Livingston	190	197	4	193	78,703
Madison	49	51	3	48	25,133
Monroe	4,449	4,619	164	4,455	2,039,145
Montgomery	111	114	1	113	58,707
Nassau	1,295	1,345	68	1,277	640,732
Niagara	693	702	12	690	265,165
Oneida	624	673	40	633	265,704
Onondaga	1,545	1,616	123	1,493	587,097
Ontario	209	215	9	206	97,614
Orange	679	702	15	687	371,047
Orleans	121	128	7	121	45,638
Oswego	170	173	10	163	102,284
Otsego	33	33	1	32	26,504
Putnam	44	47	5	42	33,190
Rensselaer	280	286	4	282	176,224
Rockland	381	400	7	393	228,580
St. Lawrence	286	290	5	285	95,155
Saratoga	68	70	7	63	40,616
Schenectady	241	253	21	232	111,313
Schoharie	33	36	1	35	36,555
Schuyler	31	32	3	29	9,527
Seneca	47	48	3	45	18,817
Steuben	264	275	7	268	109,466
Suffolk	2,505	2,606	149	2,457	981,466
Sullivan	196	199	8	191	62,733
Tioga	45	48	2	46	17,242
Tompkins	235	253	14	239	128,817
Ulster	273	282	17	265	138,122
Warren	102	107	5	102	44,191
Washington	111	117	8	109	57,189
Wayne	158	163	12	151	62,581
Westchester	3,163	3,291	103	3,188	2,047,216
Wyoming	71	73	6	67	35,496
Yates	30	30	1	29	9,951

\* Expenditures partially estimated.

Table 11  
SAFETY NET ASSISTANCE - FNP BY CASE SIZE CATEGORY  
Cases, Recipients, Children, Adults and Expenditures by Local District  
February 2001

Local District	One Person					Multi-Person				
	Cases	Recipients	Children	Adults	Expenditures	Cases	Recipients	Children	Adults	Expenditures
New York State	See Note	See Note	See Note	See Note	See Note	See Note	See Note	See Note	See Note	See Note
New York City	See Note	See Note	See Note	See Note	See Note	See Note	See Note	See Note	See Note	See Note
Rest of State	26,778	26,778	562	26,216	\$12,291,446	831	1,884	597	1,287	\$440,805
Albany	773	773	5	768	461,783	8	19	11	8	3,538
Allegany	109	109	3	106	31,848	2	4	0	4	336
Broome	550	550	14	536	259,896	26	55	17	38	12,755
Cattaraugus	145	145	2	143	55,894	6	16	5	11	6,861
Cayuga	95	95	1	94	55,240	0	0	0	0	0
Chautauqua	574	574	9	565	170,766	12	26	8	18	4,230
Chemung	166	166	8	158	94,392	10	20	10	10	3,944
Chenango	50	50	0	50	25,174	2	4	2	2	763
Clinton	168	168	3	165	78,208	5	10	0	10	1,546
Columbia	117	117	3	114	49,446	2	4	2	2	423
Cortland	110	110	2	108	44,419	3	8	3	5	1,185
Delaware	51	51	1	50	14,390	2	4	0	4	919
Dutchess	386	386	29	357	180,402	17	43	25	18	11,251
Erie	4,399	4,399	47	4,352	1,672,145	122	279	69	210	48,604
Essex	65	65	1	64	22,283	3	6	2	4	2,807
Franklin	87	87	2	85	36,568	2	4	0	4	737
Fulton	127	127	0	127	54,753	6	12	3	9	2,027
Genesee	82	82	4	78	38,103	3	7	5	2	939
Greene	106	106	3	103	44,250	3	6	3	3	947
Hamilton	3	3	0	3	679	0	0	0	0	0
Herkimer	88	88	2	86	29,236	2	4	1	3	506
Jefferson	351	351	4	347	143,935	10	23	0	23	4,997
Lewis	27	27	0	27	10,092	2	5	5	0	1,114
Livingston	183	183	4	179	76,390	7	14	0	14	2,313
Madison	47	47	1	46	24,318	2	4	2	2	815
Monroe	4,327	4,327	51	4,276	1,978,763	122	292	113	179	60,382
Montgomery	108	108	0	108	57,628	3	6	1	5	1,079
Nassau	1,251	1,251	36	1,215	616,137	44	94	32	62	24,595
Niagara	687	687	8	679	262,771	6	15	4	11	2,394
Oneida	584	584	17	567	246,870	40	89	23	66	18,834
Onondaga	1,490	1,490	72	1,418	560,611	55	126	51	75	26,486
Ontario	204	204	3	201	95,089	5	11	6	5	2,525
Orange	661	661	6	655	362,972	18	41	9	32	8,075
Orleans	116	116	2	114	43,134	5	12	5	7	2,504
Oswego	168	168	5	163	101,184	2	5	5	0	1,100
Otsego	33	33	1	32	26,504	0	0	0	0	0
Putnam	41	41	3	38	31,912	3	6	2	4	1,278
Rensselaer	274	274	0	274	170,500	6	12	4	8	5,724
Rockland	363	363	3	360	215,691	18	37	4	33	12,889
St.Lawrence	282	282	5	277	93,765	4	8	0	8	1,390
Saratoga	66	66	5	61	38,626	2	4	2	2	1,990
Schenectady	232	232	10	222	108,493	9	21	11	10	2,820
Schoharie	31	31	1	30	32,015	2	5	0	5	4,540
Schuyler	30	30	3	27	9,079	1	2	0	2	448
Seneca	46	46	3	43	18,306	1	2	0	2	511
Steuben	255	255	2	253	106,963	9	20	5	15	2,503
Suffolk	2,443	2,443	77	2,366	945,936	62	163	72	91	35,530
Sullivan	193	193	6	187	62,129	3	6	2	4	604
Tioga	42	42	2	40	16,697	3	6	0	6	545
Tompkins	222	222	4	218	123,207	13	31	10	21	5,610
Ulster	265	265	7	258	133,604	8	17	10	7	4,518
Warren	97	97	5	92	42,585	5	10	0	10	1,606
Washington	105	105	6	99	55,003	6	12	2	10	2,186
Wayne	155	155	6	149	61,120	3	8	6	2	1,461
Westchester	3,049	3,049	58	2,991	1,955,354	114	242	45	197	91,862
Wyoming	69	69	6	63	34,237	2	4	0	4	1,259
Yates	30	30	1	29	9,951	0	0	0	0	0

Note: A breakout of One-Person and Multi-Person cases is not available for New York City.

Table 12  
**SAFETY NET ASSISTANCE - FNP - CASH TOTAL**  
Cases, Recipients, Children, Adults and Expenditures by Local District  
February 2001

Local District	Safety Net Assistance - FNP - Cash Total				
	Cases	Recipients	Children	Adults	Expenditures
New York State	88,845	93,863	2,380	91,483	See Note
New York City	68,186	72,285	1,412	70,873	See Note
Rest of State	20,659	21,578	968	20,610	\$9,266,272
Albany	780	791	16	775	465,000
Allegany	99	101	3	98	26,875
Broome	392	416	26	390	166,206
Cattaraugus	140	150	7	143	59,656
Cayuga	80	80	1	79	43,105
Chautauqua	494	508	17	491	145,364
Chemung	151	161	18	143	76,141
Chenango	40	40	0	40	21,377
Clinton	138	143	2	141	61,268
Columbia	104	105	3	102	37,417
Cortland	95	100	4	96	36,516
Delaware	44	45	1	44	11,770
Dutchess	209	231	33	198	84,737
Erie	3,361	3,496	110	3,386	1,304,496
Essex	57	60	2	58	21,313
Franklin	69	71	2	69	28,927
Fulton	101	106	2	104	40,256
Genesee	67	69	5	64	29,083
Greene	85	87	2	85	29,502
Hamilton	3	3	0	3	679
Herkimer	76	77	0	77	20,633
Jefferson	276	288	2	286	111,379
Lewis	19	22	5	17	5,768
Livingston	157	163	4	159	61,001
Madison	40	42	3	39	18,384
Monroe	2,507	2,635	132	2,503	1,072,022
Montgomery	107	110	1	109	57,540
Nassau	952	990	36	954	428,994
Niagara	390	398	11	387	129,685
Oneida	481	526	36	490	177,196
Onondaga	1,307	1,375	105	1,270	477,840
Ontario	140	144	7	137	52,056
Orange	486	504	11	493	243,751
Orleans	116	123	6	117	44,395
Oswego	139	142	10	132	84,096
Otsego	26	26	1	25	13,138
Putnam	25	27	0	27	18,595
Rensselaer	213	219	4	215	130,901
Rockland	160	173	7	166	96,689
St.Lawrence	246	250	5	245	73,624
Saratoga	59	61	6	55	32,732
Schenectady	176	185	18	167	73,373
Schoharie	29	32	1	31	34,399
Schuyler	22	23	3	20	6,199
Seneca	31	32	3	29	11,875
Steuben	207	217	6	211	82,328
Suffolk	2,028	2,123	122	2,001	798,220
Sullivan	140	143	8	135	25,399
Tioga	43	46	1	45	16,620
Tompkins	150	166	13	153	85,042
Ulster	188	197	15	182	84,596
Warren	90	95	5	90	35,453
Washington	89	95	5	90	39,637
Wayne	121	126	12	114	43,499
Westchester	2,819	2,943	103	2,840	1,848,881
Wyoming	66	68	6	62	31,089
Yates	29	29	1	28	9,555

Note: A breakout of Safety Net Assistance - FNP - Cash and Safety Net Assistance - FNP - Non-Cash expenditures is not available for New York City.

Table 13  
SAFETY NET ASSISTANCE - FNP - CASH BY CASE SIZE CATEGORY  
Cases, Recipients, Children, Adults and Expenditures by Local District  
February 2001

Local District	One Person					Multi-Person				
	Cases	Recipients	Children	Adults	Expenditures	Cases	Recipients	Children	Adults	Expenditures
New York State	See Note	See Note	See Note	See Note	See Note	See Note	See Note	See Note	See Note	See Note
New York City	See Note	See Note	See Note	See Note	See Note	See Note	See Note	See Note	See Note	See Note
Rest of State	19,934	19,934	466	19,468	\$8,878,403	725	1,644	502	1,142	\$387,869
Albany	772	772	5	767	461,462	8	19	11	8	3,538
Allegany	97	97	3	94	26,539	2	4	0	4	336
Broome	371	371	13	358	156,800	21	45	13	32	9,406
Cattaraugus	134	134	2	132	52,795	6	16	5	11	6,861
Cayuga	80	80	1	79	43,105	0	0	0	0	0
Chautauqua	482	482	9	473	141,134	12	26	8	18	4,230
Chemung	141	141	8	133	72,197	10	20	10	10	3,944
Chenango	40	40	0	40	21,377	0	0	0	0	0
Clinton	133	133	2	131	59,722	5	10	0	10	1,546
Columbia	103	103	3	100	37,297	1	2	0	2	120
Cortland	92	92	1	91	35,331	3	8	3	5	1,185
Delaware	43	43	1	42	11,291	1	2	0	2	479
Dutchess	196	196	16	180	75,483	13	35	17	18	9,254
Erie	3,257	3,257	47	3,210	1,261,650	104	239	63	176	42,846
Essex	54	54	0	54	18,506	3	6	2	4	2,807
Franklin	67	67	2	65	28,190	2	4	0	4	737
Fulton	96	96	0	96	38,491	5	10	2	8	1,765
Genesee	65	65	3	62	28,566	2	4	2	2	517
Greene	83	83	1	82	29,092	2	4	1	3	410
Hamilton	3	3	0	3	679	0	0	0	0	0
Herkimer	75	75	0	75	20,445	1	2	0	2	188
Jefferson	267	267	2	265	106,832	9	21	0	21	4,547
Lewis	17	17	0	17	4,654	2	5	5	0	1,114
Livingston	151	151	4	147	59,123	6	12	0	12	1,878
Madison	38	38	1	37	17,569	2	4	2	2	815
Monroe	2,412	2,412	50	2,362	1,026,151	95	223	82	141	45,871
Montgomery	104	104	0	104	56,461	3	6	1	5	1,079
Nassau	917	917	18	899	408,380	35	73	18	55	20,614
Niagara	385	385	7	378	127,711	5	13	4	9	1,974
Oneida	444	444	16	428	159,221	37	82	20	62	17,975
Onondaga	1,255	1,255	56	1,199	453,193	52	120	49	71	24,647
Ontario	137	137	3	134	50,636	3	7	4	3	1,420
Orange	470	470	5	465	236,199	16	34	6	28	7,552
Orleans	111	111	1	110	41,891	5	12	5	7	2,504
Oswego	137	137	5	132	82,996	2	5	5	0	1,100
Otsego	26	26	1	25	13,138	0	0	0	0	0
Putnam	23	23	0	23	17,609	2	4	0	4	986
Rensselaer	207	207	0	207	125,177	6	12	4	8	5,724
Rockland	148	148	3	145	88,310	12	25	4	21	8,379
St. Lawrence	242	242	5	237	72,234	4	8	0	8	1,390
Saratoga	57	57	4	53	30,742	2	4	2	2	1,990
Schenectady	169	169	10	159	71,111	7	16	8	8	2,262
Schoharie	27	27	1	26	29,859	2	5	0	5	4,540
Schuyler	21	21	3	18	5,751	1	2	0	2	448
Seneca	30	30	3	27	11,364	1	2	0	2	511
Steuben	199	199	1	198	80,202	8	18	5	13	2,126
Suffolk	1,972	1,972	56	1,916	766,477	56	151	66	85	31,743
Sullivan	137	137	6	131	24,795	3	6	2	4	604
Tioga	40	40	1	39	16,075	3	6	0	6	545
Tompkins	139	139	3	136	80,343	11	27	10	17	4,699
Ulster	180	180	5	175	80,078	8	17	10	7	4,518
Warren	85	85	5	80	33,847	5	10	0	10	1,606
Washington	83	83	3	80	37,451	6	12	2	10	2,186
Wayne	118	118	6	112	42,038	3	8	6	2	1,461
Westchester	2,709	2,709	58	2,651	1,761,248	110	234	45	189	87,633
Wyoming	64	64	6	58	29,830	2	4	0	4	1,259
Yates	29	29	1	28	9,555	0	0	0	0	0

Note: A breakout of One-Person and Multi-Person cases is not available for New York City.

Table 14  
**SAFETY NET ASSISTANCE - FNP - NON-CASH TOTAL**  
Cases, Recipients, Children, Adults and Expenditures by Local District  
February 2001

Local District	Safety Net Assistance - FNP - Non-Cash Total				
	Cases	Recipients	Children	Adults	Expenditures
New York State	21,035	21,531	553	20,978	See Note
New York City	14,085	14,447	362	14,085	See Note
Rest of State	6,950	7,084	191	6,893	\$3,465,979
Albany	1	1	0	1	321
Allegany	12	12	0	12	5,309
Broome	184	189	5	184	106,445
Cattaraugus	11	11	0	11	3,099
Cayuga	15	15	0	15	12,135
Chautauqua	92	92	0	92	29,632
Chemung	25	25	0	25	22,195
Chenango	12	14	2	12	4,560
Clinton	35	35	1	34	18,486
Columbia	15	16	2	14	12,452
Cortland	18	18	1	17	9,088
Delaware	9	10	0	10	3,539
Dutchess	194	198	21	177	106,916
Erie	1,160	1,182	6	1,176	416,253
Essex	11	11	1	10	3,777
Franklin	20	20	0	20	8,378
Fulton	32	33	1	32	16,524
Genesee	18	20	4	16	9,959
Greene	24	25	4	21	15,695
Hamilton	0	0	0	0	0
Herkimer	14	15	3	12	9,109
Jefferson	85	86	2	84	37,553
Lewis	10	10	0	10	5,438
Livingston	33	34	0	34	17,702
Madison	9	9	0	9	6,749
Monroe	1,942	1,984	32	1,952	967,123
Montgomery	4	4	0	4	1,167
Nassau	343	355	32	323	211,738
Niagara	303	304	1	303	135,480
Oneida	143	147	4	143	88,508
Onondaga	238	241	18	223	109,257
Ontario	69	71	2	69	45,558
Orange	193	198	4	194	127,296
Orleans	5	5	1	4	1,243
Oswego	31	31	0	31	18,188
Otsego	7	7	0	7	13,366
Putnam	19	20	5	15	14,595
Rensselaer	67	67	0	67	45,323
Rockland	221	227	0	227	131,891
St. Lawrence	40	40	0	40	21,531
Saratoga	9	9	1	8	7,884
Schenectady	65	68	3	65	37,940
Schoharie	4	4	0	4	2,156
Schuyler	9	9	0	9	3,328
Seneca	16	16	0	16	6,942
Steuben	57	58	1	57	27,138
Suffolk	477	483	27	456	183,246
Sullivan	56	56	0	56	37,334
Tioga	2	2	1	1	622
Tompkins	85	87	1	86	43,775
Ulster	85	85	2	83	53,526
Warren	12	12	0	12	8,738
Washington	22	22	3	19	17,552
Wayne	37	37	0	37	19,082
Westchester	344	348	0	348	198,335
Wyoming	5	5	0	5	4,407
Yates	1	1	0	1	396

Note: A breakout of Safety Net Assistance - FNP - Cash and Safety Net Assistance - FNP - Non-Cash expenditures is not available for New York City.



Table 15  
SAFETY NET ASSISTANCE - FNP - NON-CASH BY CASE SIZE CATEGORY  
Cases, Recipients, Children, Adults and Expenditures by Local District  
February 2001

Local District	One Person					Multi-Person				
	Cases	Recipients	Children	Adults	Expenditures	Cases	Recipients	Children	Adults	Expenditures
New York State	See Note	See Note	See Note	See Note	See Note	See Note	See Note	See Note	See Note	See Note
New York City	See Note	See Note	See Note	See Note	See Note	See Note	See Note	See Note	See Note	See Note
Rest of State	6,844	6,844	96	6,748	\$3,413,043	106	240	95	145	\$52,936
Albany	1	1	0	1	321	0	0	0	0	0
Allegany	12	12	0	12	5,309	0	0	0	0	0
Broome	179	179	1	178	103,096	5	10	4	6	3,349
Cattaraugus	11	11	0	11	3,099	0	0	0	0	0
Cayuga	15	15	0	15	12,135	0	0	0	0	0
Chautauqua	92	92	0	92	29,632	0	0	0	0	0
Chemung	25	25	0	25	22,195	0	0	0	0	0
Chenango	10	10	0	10	3,797	2	4	2	2	763
Clinton	35	35	1	34	18,486	0	0	0	0	0
Columbia	14	14	0	14	12,149	1	2	2	0	303
Cortland	18	18	1	17	9,088	0	0	0	0	0
Delaware	8	8	0	8	3,099	1	2	0	2	440
Dutchess	190	190	13	177	104,919	4	8	8	0	1,997
Erie	1,142	1,142	0	1,142	410,495	18	40	6	34	5,758
Essex	11	11	1	10	3,777	0	0	0	0	0
Franklin	20	20	0	20	8,378	0	0	0	0	0
Fulton	31	31	0	31	16,262	1	2	1	1	262
Genesee	17	17	1	16	9,537	1	3	3	0	422
Greene	23	23	2	21	15,158	1	2	2	0	537
Hamilton	0	0	0	0	0	0	0	0	0	0
Herkimer	13	13	2	11	8,791	1	2	1	1	318
Jefferson	84	84	2	82	37,103	1	2	0	2	450
Lewis	10	10	0	10	5,438	0	0	0	0	0
Livingston	32	32	0	32	17,267	1	2	0	2	435
Madison	9	9	0	9	6,749	0	0	0	0	0
Monroe	1,915	1,915	1	1,914	952,612	27	69	31	38	14,511
Montgomery	4	4	0	4	1,167	0	0	0	0	0
Nassau	334	334	18	316	207,757	9	21	14	7	3,981
Niagara	302	302	1	301	135,060	1	2	0	2	420
Oneida	140	140	1	139	87,649	3	7	3	4	859
Onondaga	235	235	16	219	107,418	3	6	2	4	1,839
Ontario	67	67	0	67	44,453	2	4	2	2	1,105
Orange	191	191	1	190	126,773	2	7	3	4	523
Orleans	5	5	1	4	1,243	0	0	0	0	0
Oswego	31	31	0	31	18,188	0	0	0	0	0
Otsego	7	7	0	7	13,366	0	0	0	0	0
Putnam	18	18	3	15	14,303	1	2	2	0	292
Rensselaer	67	67	0	67	45,323	0	0	0	0	0
Rockland	215	215	0	215	127,381	6	12	0	12	4,510
St.Lawrence	40	40	0	40	21,531	0	0	0	0	0
Saratoga	9	9	1	8	7,884	0	0	0	0	0
Schenectady	63	63	0	63	37,382	2	5	3	2	558
Schoharie	4	4	0	4	2,156	0	0	0	0	0
Schuyler	9	9	0	9	3,328	0	0	0	0	0
Seneca	16	16	0	16	6,942	0	0	0	0	0
Steuben	56	56	1	55	26,761	1	2	0	2	377
Suffolk	471	471	21	450	179,459	6	12	6	6	3,787
Sullivan	56	56	0	56	37,334	0	0	0	0	0
Tioga	2	2	1	1	622	0	0	0	0	0
Tompkins	83	83	1	82	42,864	2	4	0	4	911
Ulster	85	85	2	83	53,526	0	0	0	0	0
Warren	12	12	0	12	8,738	0	0	0	0	0
Washington	22	22	3	19	17,552	0	0	0	0	0
Wayne	37	37	0	37	19,082	0	0	0	0	0
Westchester	340	340	0	340	194,106	4	8	0	8	4,229
Wyoming	5	5	0	5	4,407	0	0	0	0	0
Yates	1	1	0	1	396	0	0	0	0	0

Note: A breakout of One-Person and Multi-Person cases is not available for New York City.

Table 16  
**FOOD STAMPS**  
Households, Persons and Value of Food Stamps Benefits by Local District  
February 2001

Local District	Total			Temporary Assistance			Non-Temporary Assistance		
	Households	Persons	Food Stamps Benefits	Households	Persons	Food Stamps Benefits	Households	Persons	Food Stamps Benefits
New York State	662,949	1,320,325	\$109,548,105	476,280	865,793	\$78,109,825	186,669	454,532	\$31,438,280
New York City	429,637	838,315	75,005,857	350,223	653,470	61,141,829	79,414	184,845	13,864,028
Rest of State	233,312	482,010	34,542,248	126,057	212,323	16,967,996	107,255	269,687	17,574,252
Albany	7,910	16,181	1,177,407	4,572	7,971	650,638	3,338	8,210	526,769
Allegany	1,740	3,569	231,733	881	1,451	102,834	859	2,118	128,899
Broome	5,300	10,320	705,063	2,854	4,637	361,713	2,446	5,683	343,350
Cattaraugus	2,654	5,273	329,929	1,114	1,579	113,463	1,540	3,694	216,466
Cayuga	1,880	4,043	278,065	732	1,051	77,176	1,148	2,992	200,889
Chautauqua	4,979	10,443	739,989	2,713	4,591	383,635	2,266	5,852	356,354
Chemung	2,280	4,820	319,491	1,217	1,978	149,620	1,063	2,842	169,871
Chenango	1,483	3,187	204,752	452	660	49,157	1,031	2,527	155,595
Clinton	2,777	5,243	355,733	1,299	1,625	117,087	1,478	3,618	238,646
Columbia	1,308	2,388	171,174	611	871	70,054	697	1,517	101,120
Cortland	1,320	2,745	190,918	644	1,012	79,034	676	1,733	111,884
Delaware	1,216	2,275	136,877	468	579	38,668	748	1,696	98,209
Dutchess	3,312	5,999	433,088	1,616	2,495	207,263	1,696	3,504	225,825
Erie	35,733	72,913	5,400,671	20,121	34,783	2,977,005	15,612	38,130	2,423,666
Essex	1,110	2,086	123,850	500	648	40,643	610	1,438	83,207
Franklin	1,528	3,119	204,954	672	889	61,638	856	2,230	143,316
Fulton	1,670	3,458	242,188	725	954	72,354	945	2,504	169,834
Genesee	1,102	2,206	140,646	488	706	53,206	614	1,500	87,440
Greene	1,228	2,425	170,385	573	866	73,068	655	1,559	97,317
Hamilton	145	215	10,530	27	33	1,913	118	182	8,617
Herkimer	1,766	3,684	246,332	661	903	64,008	1,105	2,781	182,324
Jefferson	3,425	7,534	520,701	1,627	2,505	191,688	1,798	5,029	329,013
Lewis	788	1,716	112,245	276	386	25,672	512	1,330	86,573
Livingston	1,499	2,777	192,464	733	1,154	98,529	766	1,623	93,935
Madison	1,339	2,698	185,133	542	651	46,026	797	2,047	139,107
Monroe	25,307	54,593	3,941,818	17,015	31,819	2,531,771	8,292	22,774	1,410,047
Montgomery	1,717	3,756	276,711	597	807	62,253	1,120	2,949	214,458
Nassau	9,360	16,720	1,270,953	5,864	9,411	782,693	3,496	7,309	488,260
Niagara	5,841	11,718	848,381	3,335	5,728	455,631	2,506	5,990	392,750
Oneida	8,540	18,085	1,287,941	3,930	6,503	506,903	4,610	11,582	781,038
Onondaga	12,167	27,127	1,989,527	6,588	12,396	995,295	5,579	14,731	994,232
Ontario	2,011	3,670	252,874	897	1,244	97,994	1,114	2,426	154,880
Orange	7,133	18,241	1,411,330	3,259	6,827	579,919	3,874	11,414	831,411
Orleans	1,193	2,616	188,305	608	1,104	91,541	585	1,512	96,764
Oswego	3,178	7,528	523,253	1,288	2,000	148,948	1,890	5,528	374,305
Otsego	1,125	2,041	131,487	421	470	29,821	704	1,571	101,666
Putnam	428	610	35,368	238	298	18,558	190	312	16,810
Rensselaer	3,619	7,378	536,237	1,691	2,675	212,973	1,928	4,703	323,264
Rockland	4,530	14,452	1,086,102	1,826	3,595	232,504	2,704	10,857	853,598
St. Lawrence	3,310	6,798	451,844	1,646	2,570	185,691	1,664	4,228	266,153
Saratoga	2,526	4,842	328,039	827	902	58,745	1,699	3,940	269,294
Schenectady	3,771	8,109	577,337	1,598	2,462	189,100	2,173	5,647	388,237
Schoharie	715	1,443	88,125	255	284	17,360	460	1,159	70,765
Schuyler	392	776	48,448	185	270	20,692	207	506	27,756
Seneca	794	1,431	92,404	317	458	32,920	477	973	59,484
Steuben	2,556	5,426	359,326	1,232	1,868	142,992	1,324	3,558	216,334
Suffolk	13,798	25,186	1,805,358	8,691	13,997	1,095,204	5,107	11,189	710,154
Sullivan	1,962	3,859	253,772	936	1,310	98,424	1,026	2,549	155,348
Tioga	913	1,968	130,785	433	639	49,622	480	1,329	81,163
Tompkins	1,848	3,519	236,768	985	1,537	112,121	863	1,982	124,647
Ulster	3,483	6,341	426,607	1,861	2,824	215,653	1,622	3,517	210,954
Warren	1,498	2,828	196,739	724	1,051	77,109	774	1,777	119,630
Washington	1,440	2,781	183,539	642	857	60,810	798	1,924	122,729
Wayne	2,044	3,668	240,202	918	1,250	93,574	1,126	2,418	146,628
Westchester	15,216	30,539	2,340,546	10,577	19,451	1,608,063	4,639	11,088	732,483
Wyoming	707	1,371	91,429	303	430	33,355	404	941	58,074
Yates	698	1,273	86,375	252	308	23,665	446	965	62,710

Note: Food Stamps households containing only SSI recipients are counted as TA in accordance with Federal reporting requirements.

Note: Rest of State data does not include the following FAP data: 79 households, 94 persons, and \$8,723 in expenditures.

Table 17  
**SUPPLEMENTAL SECURITY INCOME**  
 Recipients, Total Program Expenditures, Federal and State Shares, by Local District  
 February 2001

Local District	Expenditures			
	Recipients	Total	Federal	State
New York State*	622,119	\$281,539,856	\$233,971,580	\$47,568,276
New York City	394,306	185,139,315	157,467,585	27,671,730
Rest of State	217,222	92,772,690	74,145,438	18,627,252
Albany	6,361	2,737,447	2,180,314	557,133
Allegany	1,455	597,775	478,935	118,840
Broome	4,947	2,137,749	1,753,656	384,093
Cattaraugus	2,352	1,011,026	828,178	182,848
Cayuga	1,719	740,595	574,304	166,291
Chautauqua	3,837	1,623,946	1,314,572	309,374
Chemung	2,749	1,155,734	954,694	201,040
Chenango	1,312	504,416	422,741	81,675
Clinton	2,450	1,007,601	816,531	191,070
Columbia	1,505	613,137	468,833	144,304
Cortland	1,213	539,960	436,600	103,360
Delaware	1,151	427,376	338,295	89,081
Dutchess	4,333	1,854,257	1,402,572	451,685
Erie	25,036	11,261,419	9,191,011	2,070,408
Essex	939	376,756	279,290	97,466
Franklin	1,594	654,371	523,703	130,668
Fulton	1,652	647,110	511,386	135,724
Genesee	973	397,733	314,072	83,661
Greene	1,046	398,482	312,758	85,724
Hamilton	78	29,520	24,917	4,603
Herkimer	1,562	594,180	472,316	121,864
Jefferson	2,824	1,180,081	960,721	219,360
Lewis	641	259,780	210,978	48,802
Livingston	927	387,863	321,154	66,709
Madison	1,209	451,770	349,141	102,629
Monroe	17,228	7,764,718	6,333,114	1,431,604
Montgomery	1,282	475,080	382,965	92,115
Nassau	16,746	7,009,823	5,436,702	1,573,121
Niagara	4,776	2,013,896	1,612,496	401,400
Oneida	7,081	3,025,540	2,479,939	545,601
Onondaga	11,117	4,928,989	4,100,432	828,557
Ontario	1,511	652,638	525,485	127,153
Orange	5,950	2,490,033	2,021,792	468,241
Orleans	906	356,058	293,574	62,484
Oswego	2,871	1,228,688	1,034,673	194,015
Otsego	1,302	535,048	397,541	137,507
Putnam	736	307,883	225,845	82,038
Rensselaer	3,091	1,281,741	1,015,952	265,789
Rockland	4,370	1,929,422	1,399,381	530,041
St.Lawrence	3,605	1,533,910	1,277,810	256,100
Saratoga	2,447	933,643	732,860	200,783
Schenectady	3,658	1,576,211	1,268,495	307,716
Schoharie	708	283,755	206,831	76,924
Schuyler	503	199,047	154,730	44,317
Seneca	709	273,819	216,967	56,852
Steuben	2,826	1,215,178	1,000,562	214,616
Suffolk	20,847	8,985,989	6,875,319	2,110,670
Sullivan	2,503	1,062,741	783,053	279,688
Tioga	978	407,737	344,229	63,508
Tompkins	1,467	615,146	480,334	134,812
Ulster	4,003	1,752,694	1,399,732	352,962
Warren	1,431	515,457	416,690	98,767
Washington	1,402	543,485	439,446	104,039
Wayne	1,785	697,422	558,327	139,095
Westchester	14,440	6,161,407	4,951,234	1,210,173
Wyoming	618	258,380	207,567	50,813
Yates	460	167,028	129,689	37,339
Mental Hygiene	10,591	3,627,851	2,358,557	1,269,294

\* Only NYS includes Mental Hygiene

Table 18  
**SUPPLEMENTAL SECURITY INCOME**  
 SSI Recipients by Living Arrangement and Location  
 February 2001

Living Arrangement	New York State	New York City	Rest of State	Mental Hygiene
Living Alone	322,507	221,028	101,420	59
Living With Others	210,496	132,160	78,310	26
Living in Household of Another	24,663	15,635	9,026	2
Congregate Care Level I	6,018	602	522	4,894
Congregate Care Level II	36,371	14,167	21,703	501
Congregate Care Level III	255	71	184	0
Title XIX Institution	21,809	10,643	6,057	5,109
Total	622,119	394,306	217,222	10,591

Table 19  
**SUPPLEMENTAL SECURITY INCOME**  
 SSI Recipients by Living Arrangement and Category of Assistance  
 February 2001

Living Arrangement	Total	Category of Assistance		
		Aged	Blind	Disabled
Living Alone	322,507	101,854	1,744	218,909
Living With Others	210,496	17,731	1,145	191,620
Living in Household of Another	24,663	10,383	162	14,118
Congregate Care Level I	6,018	347	34	5,637
Congregate Care Level II	36,371	5,456	184	30,731
Congregate Care Level III	255	0	1	254
Title XIX Institution	21,809	3,791	128	17,890
Total	622,119	139,562	3,398	479,159

Table 20  
CHILD SUPPORT COLLECTIONS (IV-D)  
February 2001

Local District	Total	Current Assistance	Former Assistance	Never Assistance
New York State	\$93,055,384	\$10,046,165	\$34,691,795	\$48,317,424
New York City	34,049,598	6,318,080	13,289,013	14,442,505
Rest of State	59,005,786	3,728,085	21,402,782	33,874,919
Albany	1,721,527	83,184	542,195	1,096,148
Allegany	363,920	34,605	194,911	134,404
Broome	1,104,937	62,441	439,740	602,756
Cattaraugus	618,325	45,626	298,528	274,171
Cayuga	574,732	18,919	216,675	339,138
Chautauqua	1,023,341	95,938	587,590	339,813
Chemung	729,850	39,181	297,908	392,761
Chenango	375,958	15,783	124,121	236,054
Clinton	555,993	21,345	252,981	281,667
Columbia	358,427	17,184	132,463	208,780
Cortland	337,487	15,010	136,547	185,930
Delaware	322,220	11,110	115,082	196,028
Dutchess	1,637,056	68,510	429,964	1,138,582
Erie	4,099,931	370,322	2,111,501	1,618,108
Essex	260,761	10,420	144,826	105,515
Franklin	409,829	12,490	186,784	210,555
Fulton	439,037	16,290	178,565	244,182
Genesee	393,551	18,834	144,739	229,978
Greene	334,984	14,764	122,654	197,566
Hamilton	32,859	1,138	13,582	18,139
Herkimer	461,277	18,230	200,676	242,371
Jefferson	855,266	48,051	333,691	473,524
Lewis	191,353	4,164	75,513	111,676
Livingston	461,246	22,550	157,286	281,410
Madison	408,869	13,771	171,801	223,297
Monroe	3,985,904	466,273	1,696,620	1,823,011
Montgomery	352,365	15,547	145,275	191,543
Nassau	5,003,323	231,515	1,156,077	3,615,731
Niagara	1,322,796	109,199	687,899	525,698
Oneida	1,066,937	84,007	497,904	485,026
Onondaga	2,908,887	181,509	1,340,729	1,386,649
Ontario	743,868	28,837	247,206	467,825
Orange	1,963,033	133,837	517,642	1,311,554
Orleans	253,001	14,579	132,037	106,385
Oswego	917,905	38,852	452,786	426,267
Otsego	337,082	7,723	103,495	225,864
Putnam	407,641	3,971	71,697	331,973
Rensselaer	1,059,643	44,213	377,593	637,837
Rockland	1,396,873	64,569	368,099	964,205
St. Lawrence	737,163	42,662	377,904	316,597
Saratoga	1,152,594	17,263	223,846	911,485
Schenectady	1,017,193	55,916	283,912	677,365
Schoharie	226,416	12,090	87,062	127,264
Schuyler	111,387	2,858	36,575	71,954
Seneca	257,953	8,527	83,866	165,560
Steuben	644,726	38,536	309,040	297,150
Suffolk	7,288,230	465,050	2,064,967	4,758,213
Sullivan	407,710	30,666	161,661	215,383
Tioga	344,531	21,164	148,302	175,065
Tompkins	473,023	25,289	202,204	245,530
Ulster	976,404	48,773	305,882	621,749
Warren	570,418	16,614	182,935	370,869
Washington	478,077	21,993	155,143	300,941
Wayne	647,095	21,327	200,125	425,643
Westchester	3,454,959	375,853	1,010,354	2,068,752
Wyoming	274,008	11,312	103,716	158,980
Yates	151,905	7,701	59,906	84,298

Note: Effective February 1999, collection amounts include collections made on behalf of other states.