



NEW YORK STATE
OFFICE OF TEMPORARY AND DISABILITY ASSISTANCE
40 North Pearl Street, Albany, New York 12243-0001

George E. Pataki
Governor

Brian J. Wing
Commissioner

Temporary and Disability Assistance Statistics

March 2001

Temporary Assistance

Temporary Assistance recipients totaled 719,318 in March 2001, decreasing 4,745 (-0.7%) from the previous month. Related expenditures for totaled \$156,740,262 in March 2001, increasing \$3.9 million (+2.5%) over February 2001.

For State Fiscal Year 2000-01, Temporary Assistance recipients averaged 765,438 monthly, decreasing 132,785 (-14.8%) from the previous year's monthly average. State Fiscal Year Temporary Assistance expenditures totaled \$1.9 billion in 2000-01, decreasing \$236.9 million (-11.1%) from SFY 1999-2000.

Food Stamps

Recipients of Food Stamps numbered 1,325,587 in March 2001, increasing 5,262 (+0.4%) over February 2001. Food Stamps expenditures totaled \$117,887,005 in March 2001, increasing \$8.3 million (+7.6%) over the previous month.

The monthly average number of Food Stamps recipients was 1,355,132 in State Fiscal Year 2000-01, decreasing 116,965 (-8.0%) from the previous year's average. Total Food Stamps expenditures totaled \$1.3 billion in SFY 2000-01, decreasing \$70.4 million (-5.0%) from the previous fiscal year.

Supplemental Security Income

For March 2001, SSI recipients (including Mental Hygiene) totaled 620,502, decreasing 1,617 (-0.3%) from the previous month. SSI expenditures in March totaled \$280,369,189, decreasing \$1.2 million (-0.4%) from February 2001.

For State Fiscal Year 2000-01, the monthly average of SSI recipients (including Mental Hygiene) was 617,623, increasing 4,125 (+0.7%) over the previous year. SSI expenditures totaled \$3.3 billion in SFY 2001-01, increasing \$71.1 million (+2.2%) over SFY 1999-2000.

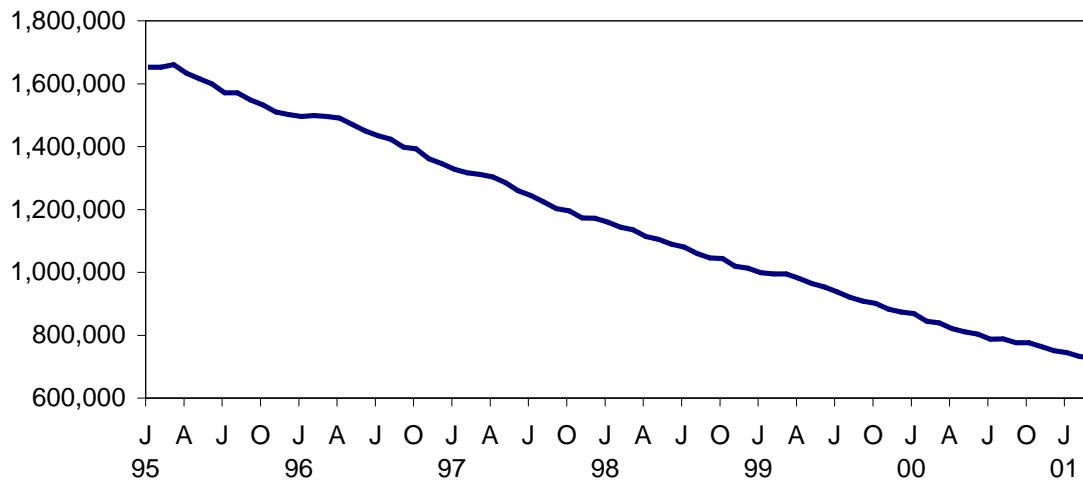
Table of Contents

Page Number

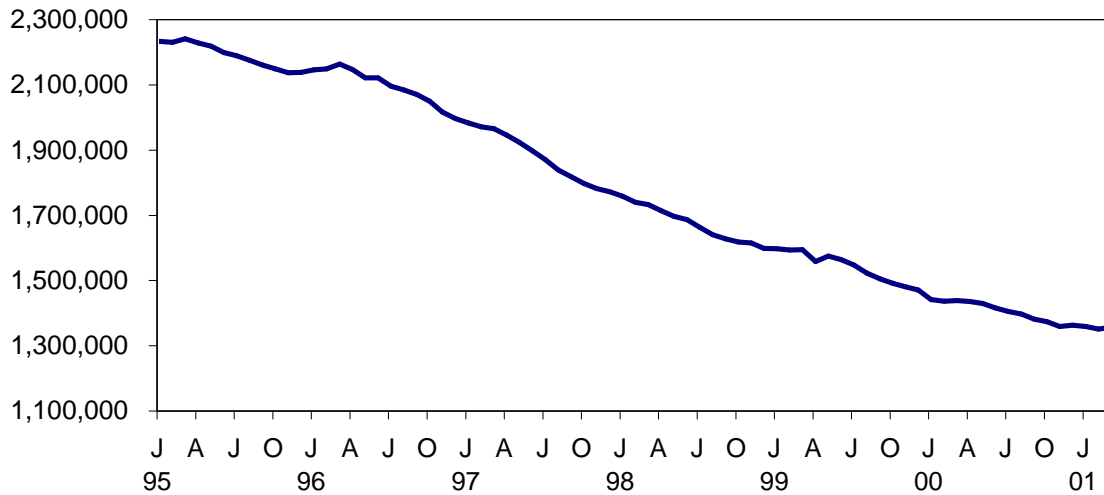
Graphs	4
Summary Tables.....	5
Temporary Assistance by Program Area	6
Temporary Assistance by Funding Source	10
Other Programs	18

NEW YORK STATE JANUARY 1995 - MARCH 2001

TEMPORARY ASSISTANCE RECIPIENTS

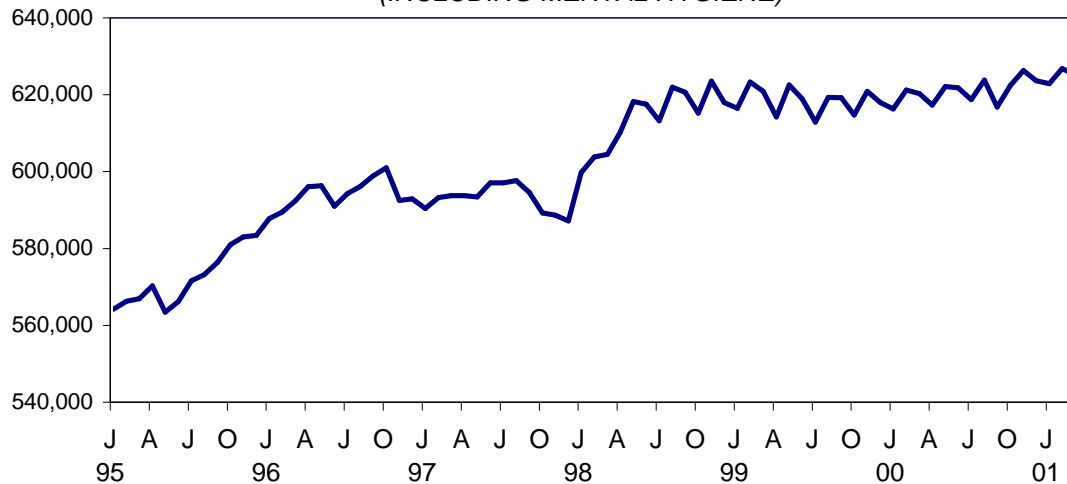


FOOD STAMPS PERSONS



SSI PERSONS

(INCLUDING MENTAL HYGIENE)



SELECTED SUMMARY PROGRAM DATA
BY REGION

Table 1
TEMPORARY AND DISABILITY ASSISTANCE CASES
March 2001

Region	Cases				
	Temporary Assistance by Program			Supplemental Security Income	Food Stamps
	Total	Family Assistance	Safety Net Assistance		
New York State	337,512	224,529	112,983	609,925	668,371
New York City	245,104	162,171	82,933	393,705	431,064
Rest of State	92,408	62,358	30,050	216,220	237,307

Table 2
TEMPORARY AND DISABILITY ASSISTANCE RECIPIENTS
March 2001

Region	Recipients				
	Temporary Assistance by Program			Supplemental Security Income	Food Stamps
	Total	Family Assistance	Safety Net Assistance		
New York State	719,318	598,494	120,824	609,925	1,325,587
New York City	518,264	430,623	87,641	393,705	836,426
Rest of State	201,054	167,871	33,183	216,220	489,161

Table 3
TEMPORARY AND DISABILITY ASSISTANCE EXPENDITURES
March 2001

Region	Expenditures				
	Temporary Assistance by Program			Supplemental Security Income	Food Stamps
	Total	Family Assistance	Safety Net Assistance		
New York State	\$156,740,262	\$118,294,287	\$38,445,975	\$276,740,516	\$117,887,005
New York City	105,326,000	81,644,000	23,682,000	184,672,339	80,480,193
Rest of State	51,414,262	36,650,287	14,763,975	92,068,177	37,406,812

Note: SSI data listed here do not include Mental Hygiene data. See Tables 17 - 19 for total SSI data.

Table 4
TEMPORARY ASSISTANCE
 Year to Year Monthly Comparison by Local District
 Cases, Recipients and Expenditures
 March 2001

Local District	March 2001			March 2000			March 1999		
	Cases	Recipients	Expenditures	Cases	Recipients	Expenditures	Cases	Recipients	Expenditures
New York State	337,512	719,318	\$156,740,262	383,997	831,458	\$ 178,029,556	443,096	986,500	\$ 194,945,463
New York City*	245,104	518,264	105,326,000	277,406	595,538	118,441,000	317,611	699,939	130,757,000
Rest of State	92,408	201,054	51,414,262	106,591	235,920	59,588,556	125,485	286,561	64,188,463
Albany	3,184	7,148	1,684,687	3,480	7,845	2,069,538	3,809	8,878	2,095,882
Allegany	513	1,157	198,001	589	1,343	220,614	813	2,021	325,575
Broome	1,952	4,242	832,231	2,388	5,411	1,150,741	2,846	6,668	1,332,430
Cattaraugus	629	1,311	263,296	709	1,508	295,717	892	2,006	332,424
Cayuga	426	923	191,751	464	1,031	199,551	539	1,212	227,029
Chautauqua	2,059	4,348	970,107	2,213	4,860	950,699	2,383	5,624	1,002,697
Chemung	824	1,841	347,188	984	2,280	396,192	1,079	2,563	398,518
Chenango	233	509	105,484	264	569	107,858	363	935	151,426
Clinton	569	1,074	257,146	598	1,144	256,535	694	1,424	275,136
Columbia	382	696	164,769	407	804	203,790	560	1,193	236,124
Cortland	394	844	178,575	445	1,006	230,182	519	1,284	249,229
Delaware	183	340	73,387	211	419	103,202	234	462	104,120
Dutchess	1,377	2,656	763,407	1,541	3,130	789,956	1,924	3,990	884,742
Erie	14,431	32,250	6,418,667	17,481	39,152	7,400,581	21,470	48,866	9,423,682
Essex	214	428	103,402	259	510	119,188	314	684	97,118
Franklin	322	658	126,796	380	717	155,658	547	1,111	186,688
Fulton	378	682	184,850	461	980	185,024	509	1,130	184,535
Genesee	299	635	137,858	307	666	137,191	311	740	134,195
Greene	408	803	187,719	430	882	208,948	499	1,065	203,823
Hamilton	16	25	6,133	16	24	5,996	25	55	8,884
Herkimer	304	621	122,258	396	861	159,458	432	989	158,975
Jefferson	1,095	2,204	512,856	1,316	2,749	639,858	1,565	3,412	706,934
Lewis	121	250	59,796	162	331	61,853	207	442	69,134
Livingston	547	1,039	261,154	510	1,038	268,031	621	1,281	265,867
Madison	191	331	79,869	190	358	79,002	213	437	87,608
Monroe	14,335	32,538	7,728,532	16,842	38,894	9,564,096	18,859	44,408	10,261,732
Montgomery	291	603	137,167	310	645	143,241	369	813	175,675
Nassau	4,574	9,199	2,806,116	5,232	10,684	2,790,003	6,359	13,198	3,370,355
Niagara	2,506	5,213	1,044,400	2,895	6,003	1,179,551	3,406	7,551	1,399,916
Oneida	2,316	5,751	1,135,931	2,736	6,844	1,293,138	3,443	8,634	1,628,994
Onondaga	5,778	12,885	2,579,997	6,110	14,050	2,746,298	7,165	17,271	3,451,697
Ontario	547	1,021	246,344	552	1,059	236,396	677	1,458	314,229
Orange	2,901	7,691	1,900,614	3,301	8,242	2,692,097	3,325	8,921	1,799,138
Orleans	478	1,076	214,368	481	1,080	221,634	470	1,096	207,134
Oswego	774	1,730	357,108	875	2,042	427,442	1,182	2,854	488,087
Otsego	113	187	52,199	129	225	66,392	160	305	62,449
Putnam	109	200	76,827	137	214	101,307	147	265	120,692
Rensselaer	1,138	2,448	564,676	1,273	2,798	566,150	1,481	3,341	691,797
Rockland	1,157	3,400	678,266	1,355	3,832	839,912	1,580	4,424	931,000
St.Lawrence	1,060	2,169	429,939	1,269	2,632	474,956	1,573	3,402	642,090
Saratoga	235	360	117,912	267	431	128,122	301	529	133,327
Schenectady	1,037	2,288	498,748	1,133	2,598	512,090	1,377	3,356	660,473
Schoharie	89	151	36,582	114	196	58,887	134	272	73,277
Schuyler	122	233	47,052	113	239	47,892	151	304	64,290
Seneca	191	368	86,466	187	392	88,356	178	374	73,740
Steuben	762	1,525	318,445	1,103	2,309	474,545	1,469	3,302	572,276
Suffolk	7,365	14,674	6,002,506	8,002	16,945	6,430,974	9,748	20,965	6,680,922
Sullivan	551	1,118	261,930	601	1,291	303,356	732	1,749	332,080
Tioga	281	573	113,658	343	739	144,907	404	941	158,980
Tompkins	700	1,321	411,027	737	1,397	352,165	778	1,557	393,045
Ulster	1,171	2,381	615,921	1,383	2,637	678,837	1,668	3,530	839,447
Warren	252	488	112,954	269	493	127,365	281	620	127,478
Washington	338	631	203,482	367	743	174,343	512	1,058	225,270
Wayne	477	890	215,182	580	1,216	253,556	718	1,600	326,012
Westchester	9,432	20,427	8,094,169	11,401	24,817	9,946,356	13,146	29,370	8,709,584
Wyoming	192	349	64,127	193	394	79,401	215	404	87,340
Yates	85	151	30,230	100	221	49,428	109	217	43,162

* Expenditures partially estimated.

Table 5
TEMPORARY ASSISTANCE
Cases, Recipients, Children, Adults and Expenditures by Local District
March 2001

Local District	Temporary Assistance				
	Cases	Recipients	Children	Adults	Expenditures
New York State	337,512	719,318	422,715	296,603	\$156,740,262
New York City*	245,104	518,264	298,680	219,584	105,326,000
Rest of State	92,408	201,054	124,035	77,019	51,414,262
Albany	3,184	7,148	4,379	2,769	1,684,687
Allegany	513	1,157	712	445	198,001
Broome	1,952	4,242	2,645	1,597	832,231
Cattaraugus	629	1,311	812	499	263,296
Cayuga	426	923	599	324	191,751
Chautauqua	2,059	4,348	2,583	1,765	970,107
Chemung	824	1,841	1,240	601	347,188
Chenango	233	509	349	160	105,484
Clinton	569	1,074	640	434	257,146
Columbia	382	696	416	280	164,769
Cortland	394	844	495	349	178,575
Delaware	183	340	218	122	73,387
Dutchess	1,377	2,656	1,681	975	763,407
Erie	14,431	32,250	19,574	12,676	6,418,667
Essex	214	428	243	185	103,402
Franklin	322	658	396	262	126,796
Fulton	378	682	383	299	184,850
Genesee	299	635	401	234	137,858
Greene	408	803	475	328	187,719
Hamilton	16	25	12	13	6,133
Herkimer	304	621	389	232	122,258
Jefferson	1,095	2,204	1,204	1,000	512,856
Lewis	121	250	147	103	59,796
Livingston	547	1,039	511	528	261,154
Madison	191	331	235	96	79,869
Monroe	14,335	32,538	20,234	12,304	7,728,532
Montgomery	291	603	372	231	137,167
Nassau	4,574	9,199	5,942	3,257	2,806,116
Niagara	2,506	5,213	3,158	2,055	1,044,400
Oneida	2,316	5,751	3,750	2,001	1,135,931
Onondaga	5,778	12,885	8,222	4,663	2,579,997
Ontario	547	1,021	569	452	246,344
Orange	2,901	7,691	5,169	2,522	1,900,614
Orleans	478	1,076	647	429	214,368
Oswego	774	1,730	1,152	578	357,108
Otsego	113	187	120	67	52,199
Putnam	109	200	122	78	76,827
Rensselaer	1,138	2,448	1,473	975	564,676
Rockland	1,157	3,400	2,277	1,123	678,266
St.Lawrence	1,060	2,169	1,253	916	429,939
Saratoga	235	360	275	85	117,912
Schenectady	1,037	2,288	1,598	690	498,748
Schoharie	89	151	95	56	36,582
Schuyler	122	233	144	89	47,052
Seneca	191	368	219	149	86,466
Steuben	762	1,525	901	624	318,445
Suffolk	7,365	14,674	8,793	5,881	6,002,506
Sullivan	551	1,118	731	387	261,930
Tioga	281	573	363	210	113,658
Tompkins	700	1,321	719	602	411,027
Ulster	1,171	2,381	1,561	820	615,921
Warren	252	488	272	216	112,954
Washington	338	631	375	256	203,482
Wayne	477	890	552	338	215,182
Westchester	9,432	20,427	11,968	8,459	8,094,169
Wyoming	192	349	186	163	64,127
Yates	85	151	84	67	30,230

* Expenditures partially estimated.

Table 6
FAMILY ASSISTANCE
Cases, Recipients, Children, Adults and Expenditures by Local District
March 2001

Local District	Family Assistance				
	Cases	Recipients	Children	Adults	Expenditures
New York State	224,529	598,494	417,459	181,035	\$118,294,287
New York City*	162,171	430,623	296,686	133,937	81,644,000
Rest of State	62,358	167,871	120,773	47,098	36,650,287
Albany	2,304	6,213	4,318	1,895	1,219,176
Allegany	394	1,034	708	326	159,001
Broome	1,388	3,604	2,573	1,031	594,757
Cattaraugus	449	1,112	801	311	195,891
Cayuga	326	812	589	223	142,938
Chautauqua	1,413	3,659	2,528	1,131	743,813
Chemung	646	1,648	1,216	432	260,619
Chenango	185	456	343	113	88,425
Clinton	372	866	630	236	160,477
Columbia	254	564	411	153	120,500
Cortland	273	714	486	228	122,177
Delaware	129	282	216	66	53,161
Dutchess	888	2,101	1,587	514	461,101
Erie	9,878	27,535	19,446	8,089	4,665,380
Essex	150	360	241	119	71,510
Franklin	223	558	395	163	84,122
Fulton	239	522	367	155	100,266
Genesee	202	532	391	141	99,666
Greene	299	692	469	223	141,781
Hamilton	8	17	12	5	3,169
Herkimer	214	528	382	146	91,630
Jefferson	691	1,767	1,182	585	348,489
Lewis	87	211	139	72	48,957
Livingston	321	787	488	299	164,659
Madison	129	263	219	44	54,052
Monroe	9,321	26,414	19,123	7,291	5,274,051
Montgomery	183	492	372	120	75,882
Nassau	3,125	7,586	5,761	1,825	2,039,634
Niagara	1,714	4,335	3,071	1,264	725,792
Oneida	1,670	5,004	3,652	1,352	852,354
Onondaga	4,091	11,103	8,076	3,027	1,944,734
Ontario	334	797	555	242	148,055
Orange	2,150	6,873	5,109	1,764	1,434,717
Orleans	355	949	643	306	172,996
Oswego	599	1,540	1,130	410	267,297
Otsego	68	138	117	21	33,573
Putnam	66	151	115	36	44,501
Rensselaer	834	2,136	1,467	669	411,472
Rockland	748	2,938	2,236	702	438,906
St.Lawrence	749	1,841	1,240	601	313,448
Saratoga	167	289	265	24	75,968
Schenectady	755	1,963	1,544	419	367,887
Schoharie	59	119	95	24	25,237
Schuyler	87	197	142	55	34,601
Seneca	128	292	206	86	59,875
Steuben	500	1,246	883	363	211,004
Suffolk	4,254	11,239	8,417	2,822	4,474,577
Sullivan	389	937	708	229	185,922
Tioga	226	511	358	153	91,892
Tompkins	430	1,028	691	337	261,393
Ulster	852	1,995	1,487	508	452,992
Warren	160	393	269	124	76,619
Washington	218	506	364	142	125,424
Wayne	299	695	527	168	133,046
Westchester	6,200	16,944	11,753	5,191	5,637,305
Wyoming	113	265	178	87	44,460
Yates	52	118	82	36	18,956

* Expenditures partially estimated.

Table 7
SAFETY NET ASSISTANCE
Cases, Recipients, Children, Adults and Expenditures by Local District
March 2001

Local District	Safety Net Assistance				
	Cases	Recipients	Children	Adults	Expenditures
New York State	112,983	120,824	5,256	115,568	\$38,445,975
New York City*	82,933	87,641	1,994	85,647	23,682,000
Rest of State	30,050	33,183	3,262	29,921	14,763,975
Albany	880	935	61	874	465,511
Allegany	119	123	4	119	39,000
Broome	564	638	72	566	237,474
Cattaraugus	180	199	11	188	67,405
Cayuga	100	111	10	101	48,813
Chautauqua	646	689	55	634	226,294
Chemung	178	193	24	169	86,569
Chenango	48	53	6	47	17,059
Clinton	197	208	10	198	96,669
Columbia	128	132	5	127	44,269
Cortland	121	130	9	121	56,398
Delaware	54	58	2	56	20,226
Dutchess	489	555	94	461	302,306
Erie	4,553	4,715	128	4,587	1,753,287
Essex	64	68	2	66	31,892
Franklin	99	100	1	99	42,674
Fulton	139	160	16	144	84,584
Genesee	97	103	10	93	38,192
Greene	109	111	6	105	45,938
Hamilton	8	8	0	8	2,964
Herkimer	90	93	7	86	30,628
Jefferson	404	437	22	415	164,367
Lewis	34	39	8	31	10,839
Livingston	226	252	23	229	96,495
Madison	62	68	16	52	25,817
Monroe	5,014	6,124	1,111	5,013	2,454,481
Montgomery	108	111	0	111	61,285
Nassau	1,449	1,613	181	1,432	766,482
Niagara	792	878	87	791	318,608
Oneida	646	747	98	649	283,577
Onondaga	1,687	1,782	146	1,636	635,263
Ontario	213	224	14	210	98,289
Orange	751	818	60	758	465,897
Orleans	123	127	4	123	41,372
Oswego	175	190	22	168	89,811
Otsego	45	49	3	46	18,626
Putnam	43	49	7	42	32,326
Rensselaer	304	312	6	306	153,204
Rockland	409	462	41	421	239,360
St.Lawrence	311	328	13	315	116,491
Saratoga	68	71	10	61	41,944
Schenectady	282	325	54	271	130,861
Schoharie	30	32	0	32	11,345
Schuyler	35	36	2	34	12,451
Seneca	63	76	13	63	26,591
Steuben	262	279	18	261	107,441
Suffolk	3,111	3,435	376	3,059	1,527,929
Sullivan	162	181	23	158	76,008
Tioga	55	62	5	57	21,766
Tompkins	270	293	28	265	149,634
Ulster	319	386	74	312	162,929
Warren	92	95	3	92	36,335
Washington	120	125	11	114	78,058
Wayne	178	195	25	170	82,136
Westchester	3,232	3,483	215	3,268	2,456,864
Wyoming	79	84	8	76	19,667
Yates	33	33	2	31	11,274

* Expenditures partially estimated.

Table 8
 TEMPORARY ASSISTANCE BY FUNDING SOURCE
 Cases, Recipients and Expenditures by Local District
 March 2001

Local District	Total			Federally Participating - TANF Family Assistance and Safety Net - FP			Federally Non-Participating Safety Net Assistance - FNP		
	Cases	Recipients	Expenditures	Cases	Recipients	Expenditures	Cases	Recipients	Expenditures
New York State	337,512	719,318	\$156,740,262	225,909	602,234	\$119,195,569	111,603	117,084	\$37,544,693
New York City*	245,104	518,264	105,326,000	162,359	431,085	81,691,000	82,745	87,179	23,635,000
Rest of State	92,408	201,054	51,414,262	63,550	171,149	37,504,569	28,858	29,905	13,909,693
Albany	3,184	7,148	1,684,687	2,331	6,278	1,233,371	853	870	451,316
Allegany	513	1,157	198,001	394	1,034	159,001	119	123	39,000
Broome	1,952	4,242	832,231	1,426	3,686	610,924	526	556	221,307
Cattaraugus	629	1,311	263,296	451	1,116	196,723	178	195	66,573
Cayuga	426	923	191,751	330	826	146,124	96	97	45,627
Chautauqua	2,059	4,348	970,107	1,438	3,715	756,561	621	633	213,546
Chemung	824	1,841	347,188	650	1,658	262,802	174	183	84,386
Chenango	233	509	105,484	186	461	89,042	47	48	16,442
Clinton	569	1,074	257,146	377	878	162,589	192	196	94,557
Columbia	382	696	164,769	254	564	120,500	128	132	44,269
Cortland	394	844	178,575	278	725	124,252	116	119	54,323
Delaware	183	340	73,387	130	283	53,654	53	57	19,733
Dutchess	1,377	2,656	763,407	911	2,166	474,786	466	490	288,621
Erie	14,431	32,250	6,418,667	9,893	27,580	4,673,424	4,538	4,670	1,745,243
Essex	214	428	103,402	151	362	71,979	63	66	31,423
Franklin	322	658	126,796	223	558	84,122	99	100	42,674
Fulton	378	682	184,850	245	540	104,469	133	142	80,381
Genesee	299	635	137,858	202	532	99,666	97	103	38,192
Greene	408	803	187,719	299	692	141,781	109	111	45,938
Hamilton	16	25	6,133	8	17	3,169	8	8	2,964
Herkimer	304	621	122,258	218	535	93,045	86	86	29,213
Jefferson	1,095	2,204	512,856	704	1,794	354,188	391	410	158,668
Lewis	121	250	59,796	89	214	49,159	32	36	10,637
Livingston	547	1,039	261,154	334	818	170,156	213	221	90,998
Madison	191	331	79,869	130	267	54,197	61	64	25,672
Monroe	14,335	32,538	7,728,532	9,844	27,883	5,633,099	4,491	4,655	2,095,433
Montgomery	291	603	137,167	183	492	75,882	108	111	61,285
Nassau	4,574	9,199	2,806,116	3,192	7,769	2,081,611	1,382	1,430	724,505
Niagara	2,506	5,213	1,044,400	1,765	4,465	751,792	741	748	292,608
Oneida	2,316	5,751	1,135,931	1,696	5,088	865,271	620	663	270,660
Onondaga	5,778	12,885	2,579,997	4,112	11,153	1,958,006	1,666	1,732	621,991
Ontario	547	1,021	246,344	337	805	149,634	210	216	96,710
Orange	2,901	7,691	1,900,614	2,178	6,943	1,460,932	723	748	439,682
Orleans	478	1,076	214,368	355	949	172,996	123	127	41,372
Oswego	774	1,730	357,108	604	1,555	269,029	170	175	88,079
Otsego	113	187	52,199	69	141	34,002	44	46	18,197
Putnam	109	200	76,827	68	156	46,498	41	44	30,329
Rensselaer	1,138	2,448	564,676	836	2,141	412,562	302	307	152,114
Rockland	1,157	3,400	678,266	765	2,989	445,843	392	411	232,423
St. Lawrence	1,060	2,169	429,939	756	1,860	316,777	304	309	113,162
Saratoga	235	360	117,912	168	292	76,295	67	68	41,617
Schenectady	1,037	2,288	498,748	773	2,012	375,720	264	276	123,028
Schoharie	89	151	36,582	59	119	25,237	30	32	11,345
Schuyler	122	233	47,052	87	197	34,601	35	36	12,451
Seneca	191	368	86,466	134	308	64,386	57	60	22,080
Steuben	762	1,525	318,445	506	1,262	214,462	256	263	103,983
Suffolk	7,365	14,674	6,002,506	4,359	11,549	4,627,477	3,006	3,125	1,375,029
Sullivan	551	1,118	261,930	394	953	188,669	157	165	73,261
Tioga	281	573	113,658	229	518	92,754	52	55	20,904
Tompkins	700	1,321	411,027	443	1,051	267,948	257	270	143,079
Ulster	1,171	2,381	615,921	885	2,086	475,109	286	295	140,812
Warren	252	488	112,954	160	393	76,619	92	95	36,335
Washington	338	631	203,482	220	509	127,164	118	122	76,318
Wayne	477	890	215,182	303	705	135,972	174	185	79,210
Westchester	9,432	20,427	8,094,169	6,252	17,121	5,695,000	3,180	3,306	2,399,169
Wyoming	192	349	64,127	114	268	44,582	78	81	19,545
Yates	85	151	30,230	52	118	18,956	33	33	11,274

* Expenditures partially estimated.

Table 9
 TEMPORARY ASSISTANCE TO NEEDY FAMILIES (TANF) - FP BY PROGRAM
 Cases, Recipients, Children, Adults and Expenditures by Local District
 March 2001

Local District	Family Assistance					Safety Net Assistance - FP				
	Cases	Recipients	Children	Adults	Expenditures	Cases	Recipients	Children	Adults	Expenditures
New York State	224,529	598,494	417,459	181,035	\$118,294,287	1,380	3,740	2,291	1,449	\$901,282
New York City*	162,171	430,623	296,686	133,937	81,644,000	188	462	250	212	47,000
Rest of State	62,358	167,871	120,773	47,098	36,650,287	1,192	3,278	2,041	1,237	854,282
Albany	2,304	6,213	4,318	1,895	1,219,176	27	65	37	28	14,195
Allegany	394	1,034	708	326	159,001	0	0	0	0	0
Broome	1,388	3,604	2,573	1,031	594,757	38	82	40	42	16,167
Cattaraugus	449	1,112	801	311	195,891	2	4	3	1	832
Cayuga	326	812	589	223	142,938	4	14	9	5	3,186
Chautauqua	1,413	3,659	2,528	1,131	743,813	25	56	41	15	12,748
Chemung	646	1,648	1,216	432	260,619	4	10	6	4	2,183
Chenango	185	456	343	113	88,425	1	5	4	1	617
Clinton	372	866	630	236	160,477	5	12	7	5	2,112
Columbia	254	564	411	153	120,500	0	0	0	0	0
Cortland	273	714	486	228	122,177	5	11	6	5	2,075
Delaware	129	282	216	66	53,161	1	1	0	1	493
Dutchess	888	2,101	1,587	514	461,101	23	65	40	25	13,685
Erie	9,878	27,535	19,446	8,089	4,665,380	15	45	26	19	8,044
Essex	150	360	241	119	71,510	1	2	1	1	469
Franklin	223	558	395	163	84,122	0	0	0	0	0
Fulton	239	522	367	155	100,266	6	18	10	8	4,203
Genesee	202	532	391	141	99,666	0	0	0	0	0
Greene	299	692	469	223	141,781	0	0	0	0	0
Hamilton	8	17	12	5	3,169	0	0	0	0	0
Herkimer	214	528	382	146	91,630	4	7	4	3	1,415
Jefferson	691	1,767	1,182	585	348,489	13	27	12	15	5,699
Lewis	87	211	139	72	48,957	2	3	1	2	202
Livingston	321	787	488	299	164,659	13	31	15	16	5,497
Madison	129	263	219	44	54,052	1	4	3	1	145
Monroe	9,321	26,414	19,123	7,291	5,274,051	523	1,469	947	522	359,048
Montgomery	183	492	372	120	75,882	0	0	0	0	0
Nassau	3,125	7,586	5,761	1,825	2,039,634	67	183	114	69	41,977
Niagara	1,714	4,335	3,071	1,264	725,792	51	130	75	55	26,000
Oneida	1,670	5,004	3,652	1,352	852,354	26	84	55	29	12,917
Onondaga	4,091	11,103	8,076	3,027	1,944,734	21	50	27	23	13,272
Ontario	334	797	555	242	148,055	3	8	5	3	1,579
Orange	2,150	6,873	5,109	1,764	1,434,717	28	70	39	31	26,215
Orleans	355	949	643	306	172,996	0	0	0	0	0
Oswego	599	1,540	1,130	410	267,297	5	15	11	4	1,732
Otsego	68	138	117	21	33,573	1	3	2	1	429
Putnam	66	151	115	36	44,501	2	5	3	2	1,997
Rensselaer	834	2,136	1,467	669	411,472	2	5	3	2	1,090
Rockland	748	2,938	2,236	702	438,906	17	51	34	17	6,937
St.Lawrence	749	1,841	1,240	601	313,448	7	19	8	11	3,329
Saratoga	167	289	265	24	75,968	1	3	2	1	327
Schenectady	755	1,963	1,544	419	367,887	18	49	29	20	7,833
Schoharie	59	119	95	24	25,237	0	0	0	0	0
Schuyler	87	197	142	55	34,601	0	0	0	0	0
Seneca	128	292	206	86	59,875	6	16	9	7	4,511
Steuben	500	1,246	883	363	211,004	6	16	9	7	3,458
Suffolk	4,254	11,239	8,417	2,822	4,474,577	105	310	203	107	152,900
Sullivan	389	937	708	229	185,922	5	16	11	5	2,747
Tioga	226	511	358	153	91,892	3	7	3	4	862
Tompkins	430	1,028	691	337	261,393	13	23	9	14	6,555
Ulster	852	1,995	1,487	508	452,992	33	91	54	37	22,117
Warren	160	393	269	124	76,619	0	0	0	0	0
Washington	218	506	364	142	125,424	2	3	1	2	1,740
Wayne	299	695	527	168	133,046	4	10	6	4	2,926
Westchester	6,200	16,944	11,753	5,191	5,637,305	52	177	115	62	57,695
Wyoming	113	265	178	87	44,460	1	3	2	1	122
Yates	52	118	82	36	18,956	0	0	0	0	0

* Expenditures partially estimated.

Table 10
SAFETY NET ASSISTANCE - FNP
Cases, Recipients, Children, Adults and Expenditures by Local District
March 2001

Local District	Safety Net Assistance - FNP				
	Cases	Recipients	Children	Adults	Expenditures
New York State	111,603	117,084	2,965	114,119	\$37,544,693
New York City*	82,745	87,179	1,744	85,435	23,635,000
Rest of State	28,858	29,905	1,221	28,684	13,909,693
Albany	853	870	24	846	451,316
Allegany	119	123	4	119	39,000
Broome	526	556	32	524	221,307
Cattaraugus	178	195	8	187	66,573
Cayuga	96	97	1	96	45,627
Chautauqua	621	633	14	619	213,546
Chemung	174	183	18	165	84,386
Chenango	47	48	2	46	16,442
Clinton	192	196	3	193	94,557
Columbia	128	132	5	127	44,269
Cortland	116	119	3	116	54,323
Delaware	53	57	2	55	19,733
Dutchess	466	490	54	436	288,621
Erie	4,538	4,670	102	4,568	1,745,243
Essex	63	66	1	65	31,423
Franklin	99	100	1	99	42,674
Fulton	133	142	6	136	80,381
Genesee	97	103	10	93	38,192
Greene	109	111	6	105	45,938
Hamilton	8	8	0	8	2,964
Herkimer	86	86	3	83	29,213
Jefferson	391	410	10	400	158,668
Lewis	32	36	7	29	10,637
Livingston	213	221	8	213	90,998
Madison	61	64	13	51	25,672
Monroe	4,491	4,655	164	4,491	2,095,433
Montgomery	108	111	0	111	61,285
Nassau	1,382	1,430	67	1,363	724,505
Niagara	741	748	12	736	292,608
Oneida	620	663	43	620	270,660
Onondaga	1,666	1,732	119	1,613	621,991
Ontario	210	216	9	207	96,710
Orange	723	748	21	727	439,682
Orleans	123	127	4	123	41,372
Oswego	170	175	11	164	88,079
Otsego	44	46	1	45	18,197
Putnam	41	44	4	40	30,329
Rensselaer	302	307	3	304	152,114
Rockland	392	411	7	404	232,423
St. Lawrence	304	309	5	304	113,162
Saratoga	67	68	8	60	41,617
Schenectady	264	276	25	251	123,028
Schoharie	30	32	0	32	11,345
Schuyler	35	36	2	34	12,451
Seneca	57	60	4	56	22,080
Steuben	256	263	9	254	103,983
Suffolk	3,006	3,125	173	2,952	1,375,029
Sullivan	157	165	12	153	73,261
Tioga	52	55	2	53	20,904
Tompkins	257	270	19	251	143,079
Ulster	286	295	20	275	140,812
Warren	92	95	3	92	36,335
Washington	118	122	10	112	76,318
Wayne	174	185	19	166	79,210
Westchester	3,180	3,306	100	3,206	2,399,169
Wyoming	78	81	6	75	19,545
Yates	33	33	2	31	11,274

* Expenditures partially estimated.

Table 11
SAFETY NET ASSISTANCE - FNP BY CASE SIZE CATEGORY
Cases, Recipients, Children, Adults and Expenditures by Local District
March 2001

Local District	One Person					Multi-Person				
	Cases	Recipients	Children	Adults	Expenditures	Cases	Recipients	Children	Adults	Expenditures
New York State	See Note	See Note	See Note	See Note	See Note	See Note	See Note	See Note	See Note	See Note
New York City	See Note	See Note	See Note	See Note	See Note	See Note	See Note	See Note	See Note	See Note
Rest of State	28,031	28,031	600	27,431	\$13,459,044	827	1,874	621	1,253	\$450,649
Albany	841	841	9	832	446,910	12	29	15	14	4,406
Allegany	116	116	1	115	37,885	3	7	3	4	1,115
Broome	501	501	14	487	209,380	25	55	18	37	11,927
Cattaraugus	164	164	2	162	60,628	14	31	6	25	5,945
Cayuga	95	95	1	94	45,365	1	2	0	2	262
Chautauqua	610	610	7	603	208,473	11	23	7	16	5,073
Chemung	165	165	8	157	81,167	9	18	10	8	3,219
Chenango	46	46	0	46	16,177	1	2	2	0	265
Clinton	188	188	3	185	92,995	4	8	0	8	1,562
Columbia	124	124	3	121	42,641	4	8	2	6	1,628
Cortland	113	113	2	111	53,288	3	6	1	5	1,035
Delaware	50	50	2	48	18,344	3	7	0	7	1,389
Dutchess	449	449	31	418	273,964	17	41	23	18	14,657
Erie	4,431	4,431	44	4,387	1,699,702	107	239	58	181	45,541
Essex	60	60	1	59	28,268	3	6	0	6	3,155
Franklin	98	98	1	97	42,385	1	2	0	2	289
Fulton	126	126	1	125	76,631	7	16	5	11	3,750
Genesee	93	93	4	89	36,930	4	10	6	4	1,262
Greene	107	107	4	103	42,998	2	4	2	2	2,940
Hamilton	8	8	0	8	2,964	0	0	0	0	0
Herkimer	86	86	3	83	29,213	0	0	0	0	0
Jefferson	379	379	5	374	154,604	12	31	5	26	4,064
Lewis	29	29	1	28	9,266	3	7	6	1	1,371
Livingston	206	206	5	201	88,116	7	15	3	12	2,882
Madison	58	58	7	51	24,594	3	6	6	0	1,078
Monroe	4,373	4,373	53	4,320	2,029,751	118	282	111	171	65,682
Montgomery	105	105	0	105	60,104	3	6	0	6	1,181
Nassau	1,340	1,340	37	1,303	702,182	42	90	30	60	22,323
Niagara	735	735	9	726	290,278	6	13	3	10	2,330
Oneida	586	586	17	569	254,742	34	77	26	51	15,918
Onondaga	1,620	1,620	74	1,546	600,904	46	112	45	67	21,087
Ontario	205	205	4	201	94,761	5	11	5	6	1,949
Orange	701	701	10	691	428,986	22	47	11	36	10,696
Orleans	119	119	2	117	39,689	4	8	2	6	1,683
Oswego	167	167	4	163	83,179	3	8	7	1	4,900
Otsego	43	43	1	42	17,899	1	3	0	3	298
Putnam	38	38	3	35	29,051	3	6	1	5	1,278
Rensselaer	297	297	2	295	149,505	5	10	1	9	2,609
Rockland	375	375	3	372	219,184	17	36	4	32	13,239
St. Lawrence	299	299	4	295	110,365	5	10	1	9	2,797
Saratoga	66	66	6	60	41,127	1	2	2	0	490
Schenectady	255	255	13	242	116,431	9	21	12	9	6,597
Schoharie	28	28	0	28	10,467	2	4	0	4	878
Schuyler	34	34	2	32	12,003	1	2	0	2	448
Seneca	54	54	3	51	21,531	3	6	1	5	549
Steuben	251	251	3	248	101,864	5	12	6	6	2,119
Suffolk	2,925	2,925	83	2,842	1,327,424	81	200	90	110	47,605
Sullivan	153	153	6	147	69,963	4	12	6	6	3,298
Tioga	49	49	2	47	19,999	3	6	0	6	905
Tompkins	247	247	8	239	138,859	10	23	11	12	4,220
Ulster	278	278	9	269	136,597	8	17	11	6	4,215
Warren	89	89	3	86	35,169	3	6	0	6	1,166
Washington	114	114	8	106	74,850	4	8	2	6	1,468
Wayne	168	168	10	158	76,343	6	17	9	8	2,867
Westchester	3,066	3,066	54	3,012	2,313,073	114	240	46	194	86,096
Wyoming	75	75	6	69	18,602	3	6	0	6	943
Yates	33	33	2	31	11,274	0	0	0	0	0

Note: A breakout of One-Person and Multi-Person cases is not available for New York City.

Table 12
SAFETY NET ASSISTANCE - FNP - CASH TOTAL
Cases, Recipients, Children, Adults and Expenditures by Local District
March 2001

Local District	Safety Net Assistance - FNP - Cash Total				
	Cases	Recipients	Children	Adults	Expenditures
New York State	90,221	95,207	2,426	92,781	See Note
New York City	68,517	72,590	1,406	71,184	See Note
Rest of State	21,704	22,617	1,020	21,597	\$10,011,162
Albany	852	869	24	845	450,995
Allegany	107	111	4	107	34,448
Broome	371	397	28	369	135,641
Cattaraugus	164	181	7	174	62,761
Cayuga	77	78	1	77	30,456
Chautauqua	522	533	13	520	178,092
Chemung	149	158	18	140	67,716
Chenango	35	35	0	35	12,028
Clinton	153	157	2	155	75,677
Columbia	116	119	3	116	35,638
Cortland	100	103	2	101	47,206
Delaware	45	49	2	47	16,289
Dutchess	240	259	32	227	106,248
Erie	3,366	3,478	96	3,382	1,314,560
Essex	51	54	0	54	24,221
Franklin	77	78	1	77	36,634
Fulton	100	108	5	103	60,186
Genesee	78	82	6	76	28,769
Greene	84	85	2	83	29,702
Hamilton	8	8	0	8	2,964
Herkimer	72	72	3	69	20,769
Jefferson	293	311	8	303	104,403
Lewis	22	25	6	19	5,310
Livingston	174	182	8	174	71,563
Madison	50	53	13	40	18,092
Monroe	2,545	2,671	134	2,537	1,115,718
Montgomery	103	106	0	106	60,018
Nassau	1,034	1,070	32	1,038	499,953
Niagara	420	426	11	415	153,346
Oneida	483	522	39	483	187,431
Onondaga	1,402	1,463	97	1,366	509,431
Ontario	143	148	8	140	53,311
Orange	503	522	13	509	268,757
Orleans	117	121	3	118	39,858
Oswego	136	141	11	130	68,562
Otsego	33	35	1	34	13,621
Putnam	24	26	0	26	21,261
Rensselaer	226	230	2	228	93,705
Rockland	177	191	7	184	107,796
St.Lawrence	262	267	5	262	86,148
Saratoga	55	56	7	49	28,819
Schenectady	193	203	24	179	76,231
Schoharie	25	27	0	27	9,058
Schuyler	27	28	2	26	9,490
Seneca	41	43	4	39	14,561
Steuben	200	206	8	198	76,239
Suffolk	2,474	2,587	145	2,442	952,316
Sullivan	94	97	8	89	33,844
Tioga	49	52	1	51	19,711
Tompkins	172	183	18	165	94,840
Ulster	207	215	19	196	96,391
Warren	83	86	3	83	29,632
Washington	99	103	8	95	52,907
Wayne	136	147	18	129	56,754
Westchester	2,829	2,951	100	2,851	2,181,399
Wyoming	74	77	6	71	18,808
Yates	32	32	2	30	10,878

Note: A breakout of Safety Net Assistance - FNP - Cash and Safety Net Assistance - FNP - Non-Cash expenditures is not available for New York City.

Table 13
 SAFETY NET ASSISTANCE - FNP - CASH BY CASE SIZE CATEGORY
 Cases, Recipients, Children, Adults and Expenditures by Local District
 March 2001

Local District	One Person					Multi-Person				
	Cases	Recipients	Children	Adults	Expenditures	Cases	Recipients	Children	Adults	Expenditures
New York State	See Note	See Note	See Note	See Note	See Note	See Note	See Note	See Note	See Note	See Note
New York City	See Note	See Note	See Note	See Note	See Note	See Note	See Note	See Note	See Note	See Note
Rest of State	20,984	20,984	498	20,486	\$9,620,827	720	1,633	522	1,111	\$390,335
Albany	840	840	9	831	446,589	12	29	15	14	4,406
Allegany	104	104	1	103	33,333	3	7	3	4	1,115
Broome	349	349	13	336	125,718	22	48	15	33	9,923
Cattaraugus	150	150	1	149	56,816	14	31	6	25	5,945
Cayuga	76	76	1	75	30,194	1	2	0	2	262
Chautauqua	512	512	7	505	173,330	10	21	6	15	4,762
Chemung	140	140	8	132	64,497	9	18	10	8	3,219
Chenango	35	35	0	35	12,028	0	0	0	0	0
Clinton	149	149	2	147	74,115	4	8	0	8	1,562
Columbia	113	113	3	110	34,642	3	6	0	6	996
Cortland	97	97	1	96	46,171	3	6	1	5	1,035
Delaware	42	42	2	40	14,900	3	7	0	7	1,389
Dutchess	228	228	17	211	93,657	12	31	15	16	12,591
Erie	3,276	3,276	44	3,232	1,276,039	90	202	52	150	38,521
Essex	48	48	0	48	21,066	3	6	0	6	3,155
Franklin	76	76	1	75	36,345	1	2	0	2	289
Fulton	94	94	1	93	56,786	6	14	4	10	3,400
Genesee	75	75	3	72	27,929	3	7	3	4	840
Greene	83	83	2	81	27,299	1	2	0	2	2,403
Hamilton	8	8	0	8	2,964	0	0	0	0	0
Herkimer	72	72	3	69	20,769	0	0	0	0	0
Jefferson	282	282	3	279	100,789	11	29	5	24	3,614
Lewis	20	20	1	19	4,196	2	5	5	0	1,114
Livingston	167	167	5	162	68,681	7	15	3	12	2,882
Madison	47	47	7	40	17,014	3	6	6	0	1,078
Monroe	2,455	2,455	51	2,404	1,069,263	90	216	83	133	46,455
Montgomery	100	100	0	100	58,837	3	6	0	6	1,181
Nassau	1,001	1,001	18	983	484,017	33	69	14	55	15,936
Niagara	415	415	8	407	151,436	5	11	3	8	1,910
Oneida	452	452	16	436	173,026	31	70	23	47	14,405
Onondaga	1,360	1,360	56	1,304	489,911	42	103	41	62	19,520
Ontario	139	139	4	135	51,591	4	9	4	5	1,720
Orange	484	484	7	477	259,038	19	38	6	32	9,719
Orleans	113	113	1	112	38,175	4	8	2	6	1,683
Oswego	133	133	4	129	63,662	3	8	7	1	4,900
Otsego	32	32	1	31	13,323	1	3	0	3	298
Putnam	22	22	0	22	20,275	2	4	0	4	986
Rensselaer	222	222	2	220	92,031	4	8	0	8	1,674
Rockland	165	165	3	162	96,448	12	26	4	22	11,348
St.Lawrence	257	257	4	253	83,351	5	10	1	9	2,797
Saratoga	54	54	5	49	28,329	1	2	2	0	490
Schenectady	186	186	13	173	71,311	7	17	11	6	4,920
Schoharie	23	23	0	23	8,180	2	4	0	4	878
Schuyler	26	26	2	24	9,042	1	2	0	2	448
Seneca	39	39	3	36	14,196	2	4	1	3	365
Steuben	196	196	2	194	74,657	4	10	6	4	1,582
Suffolk	2,399	2,399	61	2,338	908,475	75	188	84	104	43,841
Sullivan	91	91	6	85	32,036	3	6	2	4	1,808
Tioga	46	46	1	45	18,806	3	6	0	6	905
Tompkins	164	164	7	157	91,600	8	19	11	8	3,240
Ulster	200	200	8	192	92,699	7	15	11	4	3,692
Warren	80	80	3	77	28,466	3	6	0	6	1,166
Washington	95	95	6	89	51,439	4	8	2	6	1,468
Wayne	130	130	9	121	53,887	6	17	9	8	2,867
Westchester	2,719	2,719	54	2,665	2,098,710	110	232	46	186	82,689
Wyoming	71	71	6	65	17,865	3	6	0	6	943
Yates	32	32	2	30	10,878	0	0	0	0	0

Note: A breakout of One-Person and Multi-Person cases is not available for New York City.

Table 14
SAFETY NET ASSISTANCE - FNP - NON-CASH TOTAL
Cases, Recipients, Children, Adults and Expenditures by Local District
March 2001

Local District	Safety Net Assistance - FNP - Non-Cash Total				
	Cases	Recipients	Children	Adults	Expenditures
New York State	21,382	21,877	539	21,338	See Note
New York City	14,228	14,589	338	14,251	See Note
Rest of State	7,154	7,288	201	7,087	\$3,898,531
Albany	1	1	0	1	321
Allegany	12	12	0	12	4,552
Broome	155	159	4	155	85,666
Cattaraugus	14	14	1	13	3,812
Cayuga	19	19	0	19	15,171
Chautauqua	99	100	1	99	35,454
Chemung	25	25	0	25	16,670
Chenango	12	13	2	11	4,414
Clinton	39	39	1	38	18,880
Columbia	12	13	2	11	8,631
Cortland	16	16	1	15	7,117
Delaware	8	8	0	8	3,444
Dutchess	226	231	22	209	182,373
Erie	1,172	1,192	6	1,186	430,683
Essex	12	12	1	11	7,202
Franklin	22	22	0	22	6,040
Fulton	33	34	1	33	20,195
Genesee	19	21	4	17	9,423
Greene	25	26	4	22	16,236
Hamilton	0	0	0	0	0
Herkimer	14	14	0	14	8,444
Jefferson	98	99	2	97	54,265
Lewis	10	11	1	10	5,327
Livingston	39	39	0	39	19,435
Madison	11	11	0	11	7,580
Monroe	1,946	1,984	30	1,954	979,715
Montgomery	5	5	0	5	1,267
Nassau	348	360	35	325	224,552
Niagara	321	322	1	321	139,262
Oneida	137	141	4	137	83,229
Onondaga	264	269	22	247	112,560
Ontario	67	68	1	67	43,399
Orange	220	226	8	218	170,925
Orleans	6	6	1	5	1,514
Oswego	34	34	0	34	19,517
Otsego	11	11	0	11	4,576
Putnam	17	18	4	14	9,068
Rensselaer	76	77	1	76	58,409
Rockland	215	220	0	220	124,627
St. Lawrence	42	42	0	42	27,014
Saratoga	12	12	1	11	12,798
Schenectady	71	73	1	72	46,797
Schoharie	5	5	0	5	2,287
Schuyler	8	8	0	8	2,961
Seneca	16	17	0	17	7,519
Steuben	56	57	1	56	27,744
Suffolk	532	538	28	510	422,713
Sullivan	63	68	4	64	39,417
Tioga	3	3	1	2	1,193
Tompkins	85	87	1	86	48,239
Ulster	79	80	1	79	44,421
Warren	9	9	0	9	6,703
Washington	19	19	2	17	23,411
Wayne	38	38	1	37	22,456
Westchester	351	355	0	355	217,770
Wyoming	4	4	0	4	737
Yates	1	1	0	1	396

Note: A breakout of Safety Net Assistance - FNP - Cash and Safety Net Assistance - FNP - Non-Cash expenditures is not available for New York City.

Table 15
SAFETY NET ASSISTANCE - FNP - NON-CASH BY CASE SIZE CATEGORY
Cases, Recipients, Children, Adults and Expenditures by Local District
March 2001

Local District	One Person					Multi-Person				
	Cases	Recipients	Children	Adults	Expenditures	Cases	Recipients	Children	Adults	Expenditures
New York State	See Note	See Note	See Note	See Note	See Note	See Note	See Note	See Note	See Note	See Note
New York City	See Note	See Note	See Note	See Note	See Note	See Note	See Note	See Note	See Note	See Note
Rest of State	7,047	7,047	102	6,945	\$3,838,217	107	241	99	142	\$60,314
Albany	1	1	0	1	321	0	0	0	0	0
Allegany	12	12	0	12	4,552	0	0	0	0	0
Broome	152	152	1	151	83,662	3	7	3	4	2,004
Cattaraugus	14	14	1	13	3,812	0	0	0	0	0
Cayuga	19	19	0	19	15,171	0	0	0	0	0
Chautauqua	98	98	0	98	35,143	1	2	1	1	311
Chemung	25	25	0	25	16,670	0	0	0	0	0
Chenango	11	11	0	11	4,149	1	2	2	0	265
Clinton	39	39	1	38	18,880	0	0	0	0	0
Columbia	11	11	0	11	7,999	1	2	2	0	632
Cortland	16	16	1	15	7,117	0	0	0	0	0
Delaware	8	8	0	8	3,444	0	0	0	0	0
Dutchess	221	221	14	207	180,307	5	10	8	2	2,066
Erie	1,155	1,155	0	1,155	423,663	17	37	6	31	7,020
Essex	12	12	1	11	7,202	0	0	0	0	0
Franklin	22	22	0	22	6,040	0	0	0	0	0
Fulton	32	32	0	32	19,845	1	2	1	1	350
Genesee	18	18	1	17	9,001	1	3	3	0	422
Greene	24	24	2	22	15,699	1	2	2	0	537
Hamilton	0	0	0	0	0	0	0	0	0	0
Herkimer	14	14	0	14	8,444	0	0	0	0	0
Jefferson	97	97	2	95	53,815	1	2	0	2	450
Lewis	9	9	0	9	5,070	1	2	1	1	257
Livingston	39	39	0	39	19,435	0	0	0	0	0
Madison	11	11	0	11	7,580	0	0	0	0	0
Monroe	1,918	1,918	2	1,916	960,488	28	66	28	38	19,227
Montgomery	5	5	0	5	1,267	0	0	0	0	0
Nassau	339	339	19	320	218,165	9	21	16	5	6,387
Niagara	320	320	1	319	138,842	1	2	0	2	420
Oneida	134	134	1	133	81,716	3	7	3	4	1,513
Onondaga	260	260	18	242	110,993	4	9	4	5	1,567
Ontario	66	66	0	66	43,170	1	2	1	1	229
Orange	217	217	3	214	169,948	3	9	5	4	977
Orleans	6	6	1	5	1,514	0	0	0	0	0
Oswego	34	34	0	34	19,517	0	0	0	0	0
Otsego	11	11	0	11	4,576	0	0	0	0	0
Putnam	16	16	3	13	8,776	1	2	1	1	292
Rensselaer	75	75	0	75	57,474	1	2	1	1	935
Rockland	210	210	0	210	122,736	5	10	0	10	1,891
St.Lawrence	42	42	0	42	27,014	0	0	0	0	0
Saratoga	12	12	1	11	12,798	0	0	0	0	0
Schenectady	69	69	0	69	45,120	2	4	1	3	1,677
Schoharie	5	5	0	5	2,287	0	0	0	0	0
Schuyler	8	8	0	8	2,961	0	0	0	0	0
Seneca	15	15	0	15	7,335	1	2	0	2	184
Steuben	55	55	1	54	27,207	1	2	0	2	537
Suffolk	526	526	22	504	418,949	6	12	6	6	3,764
Sullivan	62	62	0	62	37,927	1	6	4	2	1,490
Tioga	3	3	1	2	1,193	0	0	0	0	0
Tompkins	83	83	1	82	47,259	2	4	0	4	980
Ulster	78	78	1	77	43,898	1	2	0	2	523
Warren	9	9	0	9	6,703	0	0	0	0	0
Washington	19	19	2	17	23,411	0	0	0	0	0
Wayne	38	38	1	37	22,456	0	0	0	0	0
Westchester	347	347	0	347	214,363	4	8	0	8	3,407
Wyoming	4	4	0	4	737	0	0	0	0	0
Yates	1	1	0	1	396	0	0	0	0	0

Note: A breakout of One-Person and Multi-Person cases is not available for New York City.

Table 16
FOOD STAMPS
Households, Persons and Value of Food Stamps Benefits by Local District
March 2001

Local District	Total			Temporary Assistance			Non-Temporary Assistance		
	Households	Persons	Food Stamps Benefits	Households	Persons	Food Stamps Benefits	Households	Persons	Food Stamps Benefits
New York State	668,371	1,325,587	\$117,887,005	477,625	864,199	\$83,716,009	190,746	461,388	\$34,170,996
New York City	431,064	836,426	80,480,193	351,386	651,998	65,604,294	79,678	184,428	14,875,899
Rest of State	237,307	489,161	37,406,812	126,239	212,201	18,111,715	111,068	276,960	19,295,097
Albany	8,077	16,456	1,274,465	4,668	8,120	698,669	3,409	8,336	575,796
Allegany	1,754	3,551	253,925	858	1,361	108,470	896	2,190	145,455
Broome	5,341	10,379	771,899	2,879	4,621	392,987	2,462	5,758	378,912
Cattaraugus	2,739	5,460	375,987	1,136	1,612	131,652	1,603	3,848	244,335
Cayuga	1,933	4,116	304,464	738	1,076	85,326	1,195	3,040	219,138
Chautauqua	5,132	10,769	824,679	2,783	4,683	423,861	2,349	6,086	400,818
Chemung	2,376	4,974	364,611	1,240	2,004	164,645	1,136	2,970	199,966
Chenango	1,502	3,190	221,624	484	717	60,718	1,018	2,473	160,906
Clinton	2,821	5,301	392,926	1,328	1,662	135,371	1,493	3,639	257,555
Columbia	1,320	2,364	179,921	621	865	74,703	699	1,499	105,218
Cortland	1,306	2,668	199,653	638	981	82,921	668	1,687	116,732
Delaware	1,236	2,298	159,821	483	593	46,680	753	1,705	113,141
Dutchess	3,367	6,112	466,211	1,644	2,560	222,292	1,723	3,552	243,919
Erie	36,055	73,408	5,761,383	20,107	34,603	3,119,824	15,948	38,805	2,641,559
Essex	1,103	2,056	134,020	505	662	47,202	598	1,394	86,818
Franklin	1,547	3,142	222,126	674	880	67,068	873	2,262	155,058
Fulton	1,733	3,638	275,506	729	971	81,739	1,004	2,667	193,767
Genesee	1,108	2,236	157,222	484	693	57,718	624	1,543	99,504
Greene	1,255	2,481	189,892	592	904	80,872	663	1,577	109,020
Hamilton	144	212	10,446	28	35	2,201	116	177	8,245
Herkimer	1,769	3,694	261,756	650	881	67,612	1,119	2,813	194,144
Jefferson	3,466	7,614	564,078	1,616	2,506	205,424	1,850	5,108	358,654
Lewis	787	1,695	118,842	285	391	29,628	502	1,304	89,214
Livingston	1,555	2,930	220,801	737	1,166	107,514	818	1,764	113,287
Madison	1,387	2,791	209,134	550	656	51,208	837	2,135	157,926
Monroe	25,697	55,235	4,257,814	16,038	30,796	2,646,331	9,659	24,439	1,611,483
Montgomery	1,779	3,926	307,349	618	840	70,825	1,161	3,086	236,524
Nassau	9,549	16,934	1,331,830	5,992	9,480	807,506	3,557	7,454	524,324
Niagara	5,963	11,950	919,073	3,347	5,699	484,317	2,616	6,251	434,756
Oneida	8,724	18,479	1,403,895	3,936	6,454	543,918	4,788	12,025	859,977
Onondaga	12,384	27,483	2,143,917	6,673	12,505	1,070,682	5,711	14,978	1,073,235
Ontario	2,051	3,730	273,552	898	1,244	106,461	1,153	2,486	167,091
Orange	7,274	18,566	1,525,722	3,332	6,984	629,997	3,942	11,582	895,725
Orleans	1,218	2,692	201,877	602	1,066	95,685	616	1,626	106,192
Oswego	3,276	7,769	575,360	1,282	1,967	159,313	1,994	5,802	416,047
Otsego	1,157	2,114	147,833	425	471	33,551	732	1,643	114,282
Putnam	453	631	40,326	257	317	21,079	196	314	19,247
Rensselaer	3,741	7,668	603,737	1,711	2,674	228,748	2,030	4,994	374,989
Rockland	4,617	14,628	1,144,099	1,856	3,650	251,034	2,761	10,978	893,065
St. Lawrence	3,352	6,905	501,940	1,631	2,466	202,717	1,721	4,439	299,223
Saratoga	2,606	5,001	372,604	844	916	70,342	1,762	4,085	302,262
Schenectady	3,918	8,424	653,327	1,671	2,592	215,948	2,247	5,832	437,379
Schoharie	749	1,517	101,381	268	313	22,701	481	1,204	78,680
Schuyler	398	796	52,973	187	276	21,896	211	520	31,077
Seneca	824	1,518	106,865	322	458	35,234	502	1,060	71,631
Steuben	2,570	5,389	384,028	1,240	1,884	157,817	1,330	3,505	226,211
Suffolk	14,021	25,528	1,955,412	8,889	14,280	1,188,857	5,132	11,248	766,555
Sullivan	1,985	3,919	269,511	942	1,334	106,225	1,043	2,585	163,286
Tioga	910	1,956	137,878	423	627	50,313	487	1,329	87,565
Tompkins	1,858	3,512	253,127	968	1,491	116,967	890	2,021	136,160
Ulster	3,532	6,399	463,202	1,875	2,812	228,211	1,657	3,587	234,991
Warren	1,577	2,971	225,856	766	1,132	91,216	811	1,839	134,640
Washington	1,501	2,899	213,301	649	867	68,609	852	2,032	144,692
Wayne	2,088	3,720	267,449	942	1,260	105,237	1,146	2,460	162,212
Westchester	15,287	30,672	2,464,806	10,630	19,389	1,669,221	4,657	11,283	795,585
Wyoming	721	1,387	100,570	312	438	37,881	409	949	62,689
Yates	714	1,308	90,806	256	316	26,571	458	992	64,235

Note: Food Stamps households containing only SSI recipients are counted as TA in accordance with Federal reporting requirements.

Note: Rest of State data does not include the following FAP data: 79 households, 94 persons, and \$8,723 in expenditures.

Table 17
SUPPLEMENTAL SECURITY INCOME
 Recipients, Total Program Expenditures, Federal and State Shares, by Local District
 March 2001

Local District	Expenditures			
	Recipients	Total	Federal	State
New York State*	620,502	\$280,369,189	\$233,023,346	\$47,345,843
New York City	393,705	184,672,339	157,093,501	27,578,838
Rest of State	216,220	92,068,177	73,567,660	18,500,517
Albany	6,275	2,706,919	2,146,279	560,640
Allegany	1,449	631,530	511,134	120,396
Broome	4,969	2,120,466	1,741,222	379,244
Cattaraugus	2,345	1,029,765	841,401	188,364
Cayuga	1,723	718,179	558,467	159,712
Chautauqua	3,815	1,655,313	1,342,935	312,378
Chemung	2,734	1,135,051	935,333	199,718
Chenango	1,308	505,916	420,759	85,157
Clinton	2,439	987,028	801,077	185,951
Columbia	1,487	604,150	459,427	144,723
Cortland	1,210	507,134	411,793	95,341
Delaware	1,152	432,421	339,894	92,527
Dutchess	4,288	1,803,042	1,360,370	442,672
Erie	24,989	11,171,354	9,127,782	2,043,572
Essex	934	360,907	265,626	95,281
Franklin	1,581	631,274	499,729	131,545
Fulton	1,629	627,993	493,945	134,048
Genesee	968	362,435	281,770	80,665
Greene	1,048	416,566	332,086	84,480
Hamilton	79	27,461	22,926	4,535
Herkimer	1,539	589,540	471,824	117,716
Jefferson	2,810	1,198,746	971,632	227,114
Lewis	638	272,422	222,343	50,079
Livingston	913	386,483	323,056	63,427
Madison	1,211	474,420	365,777	108,643
Monroe	17,169	7,706,383	6,280,366	1,426,017
Montgomery	1,285	486,478	394,031	92,447
Nassau	16,773	7,038,014	5,436,455	1,601,559
Niagara	4,766	2,075,067	1,655,838	419,229
Oneida	7,014	2,950,971	2,417,939	533,032
Onondaga	11,029	4,845,515	4,035,702	809,813
Ontario	1,497	681,834	554,278	127,556
Orange	5,917	2,543,029	2,072,102	470,927
Orleans	896	353,395	293,105	60,290
Oswego	2,856	1,220,541	1,032,076	188,465
Otsego	1,289	524,991	399,356	125,635
Putnam	727	333,544	239,470	94,074
Rensselaer	3,071	1,266,423	1,002,512	263,911
Rockland	4,384	1,919,312	1,382,320	536,992
St.Lawrence	3,576	1,519,850	1,266,204	253,646
Saratoga	2,437	948,476	751,230	197,246
Schenectady	3,662	1,565,849	1,259,471	306,378
Schoharie	698	270,457	196,829	73,628
Schuyler	499	198,257	153,666	44,591
Seneca	703	280,845	223,934	56,911
Steuben	2,820	1,232,981	1,015,406	217,575
Suffolk	20,692	8,693,901	6,649,471	2,044,430
Sullivan	2,483	1,044,761	773,465	271,296
Tioga	965	391,657	332,236	59,421
Tompkins	1,456	607,743	481,114	126,629
Ulster	3,982	1,638,384	1,299,133	339,251
Warren	1,429	543,219	438,678	104,541
Washington	1,399	561,222	453,683	107,539
Wayne	1,766	705,900	568,543	137,357
Westchester	14,389	6,156,615	4,941,391	1,215,224
Wyoming	605	229,858	182,140	47,718
Yates	453	176,190	136,929	39,261
Mental Hygiene	10,577	3,628,673	2,362,185	1,266,488

* Only NYS includes Mental Hygiene

Table 18
SUPPLEMENTAL SECURITY INCOME
 SSI Recipients by Living Arrangement and Location
 March 2001

Living Arrangement	New York State	New York City	Rest of State	Mental Hygiene
Living Alone	322,396	221,054	101,285	57
Living With Others	209,273	131,687	77,551	35
Living in Household of Another	24,523	15,518	9,002	3
Congregate Care Level I	5,994	603	501	4,890
Congregate Care Level II	36,416	14,153	21,753	510
Congregate Care Level III	242	71	171	0
Title XIX Institution	21,658	10,619	5,957	5,082
Total	620,502	393,705	216,220	10,577

Table 19
SUPPLEMENTAL SECURITY INCOME
 SSI Recipients by Living Arrangement and Category of Assistance
 March 2001

Living Arrangement	Total	Category of Assistance		
		Aged	Blind	Disabled
Living Alone	322,396	101,729	1,722	218,945
Living With Others	209,273	17,649	1,131	190,493
Living in Household of Another	24,523	10,288	158	14,077
Congregate Care Level I	5,994	340	35	5,619
Congregate Care Level II	36,416	5,436	178	30,802
Congregate Care Level III	242	0	1	241
Title XIX Institution	21,658	3,785	133	17,740
Total	620,502	139,227	3,358	477,917

Table 20
CHILD SUPPORT COLLECTIONS (IV-D)
March 2001

Local District	Total	Current Assistance	Former Assistance	Never Assistance
New York State	\$126,516,164	\$14,909,993	\$49,071,852	\$62,534,319
New York City	46,989,953	8,959,567	18,688,180	19,342,206
Rest of State	79,526,211	5,950,426	30,383,672	43,192,113
Albany	2,283,483	140,113	743,405	1,399,965
Allegany	523,700	52,920	292,118	178,662
Broome	1,449,171	99,175	586,223	763,773
Cattaraugus	947,279	77,173	516,922	353,184
Cayuga	760,385	27,655	287,243	445,487
Chautauqua	1,368,906	134,234	791,143	443,529
Chemung	1,025,628	83,948	433,541	508,139
Chenango	509,621	19,964	173,964	315,693
Clinton	690,574	31,252	306,189	353,133
Columbia	460,938	19,291	173,332	268,315
Cortland	463,641	28,595	188,812	246,234
Delaware	420,190	16,135	152,639	251,416
Dutchess	2,137,545	108,069	631,073	1,398,403
Erie	5,669,840	574,800	2,989,190	2,105,850
Essex	335,927	15,355	185,368	135,204
Franklin	579,703	23,926	286,297	269,480
Fulton	613,546	22,046	233,402	358,098
Genesee	510,017	22,284	202,652	285,081
Greene	433,705	24,472	166,796	242,437
Hamilton	41,669	1,176	18,332	22,161
Herkimer	646,625	29,424	320,906	296,295
Jefferson	1,104,411	73,687	457,870	572,854
Lewis	256,257	9,421	93,241	153,595
Livingston	624,126	30,929	222,763	370,434
Madison	530,316	21,009	208,436	300,871
Monroe	5,641,189	785,195	2,498,876	2,357,118
Montgomery	508,110	36,100	226,835	245,175
Nassau	6,602,009	364,755	1,644,177	4,593,077
Niagara	1,814,459	197,645	962,176	654,638
Oneida	1,516,790	149,252	777,707	589,831
Onondaga	3,879,927	317,861	1,809,689	1,752,377
Ontario	1,026,566	45,407	368,405	612,754
Orange	2,638,557	195,776	763,063	1,679,718
Orleans	350,501	28,240	187,394	134,867
Oswego	1,276,658	64,259	668,205	544,194
Otsego	418,471	10,375	125,658	282,438
Putnam	551,202	5,520	90,336	455,346
Rensselaer	1,389,905	70,272	527,527	792,106
Rockland	1,724,607	101,253	474,954	1,148,400
St.Lawrence	986,586	68,638	513,139	404,809
Saratoga	1,381,375	22,523	292,418	1,066,434
Schenectady	1,298,398	80,370	403,040	814,988
Schoharie	320,584	19,604	118,445	182,535
Schuyler	167,413	5,595	57,982	103,836
Seneca	366,324	17,810	134,313	214,201
Steuben	870,376	58,836	435,337	376,203
Suffolk	9,751,689	686,746	2,963,729	6,101,214
Sullivan	569,591	48,608	233,664	287,319
Tioga	457,694	29,543	217,521	210,630
Tompkins	674,686	44,445	297,116	333,125
Ulster	1,205,307	59,771	401,117	744,419
Warren	741,348	27,153	241,883	472,312
Washington	618,021	25,246	228,884	363,891
Wayne	899,740	31,082	296,393	572,265
Westchester	4,886,469	639,849	1,538,698	2,707,922
Wyoming	380,482	17,868	143,757	218,857
Yates	223,974	7,776	79,377	136,821

Note: Effective February 1999, collection amounts include collections made on behalf of other states.