



NEW YORK STATE
OFFICE OF TEMPORARY AND DISABILITY ASSISTANCE
40 North Pearl Street, Albany, New York 12243-0001

George E. Pataki
Governor

Brian J. Wing
Commissioner

Temporary and Disability Assistance Statistics

April 2001

Temporary Assistance

Recipients of Temporary Assistance totaled 710,007 in April 2001, decreasing 9,311 (-1.3%) from the previous month. Temporary Assistance expenditures totaled \$151,900,655 in April 2001, decreasing \$4.8 million (-3.1%) from March 2001.

Food Stamps

Food Stamps recipients totaled 1,326,751 in April 2001, increasing 1,164 (+0.1%) from March 2001. Expenditures in the Food Stamps program totaled \$116,046,838, decreasing \$1.8 million (-1.6%) from the previous month.

Supplemental Security Income

In April 2001, SSI recipients (including Mental Hygiene) numbered 618,620, decreasing 1,882 (-0.3%) from the previous month. SSI expenditures totaled \$283,074,788 in April 2001, increasing \$2.7 million (+1.0%) from the March 2001 expenditures.

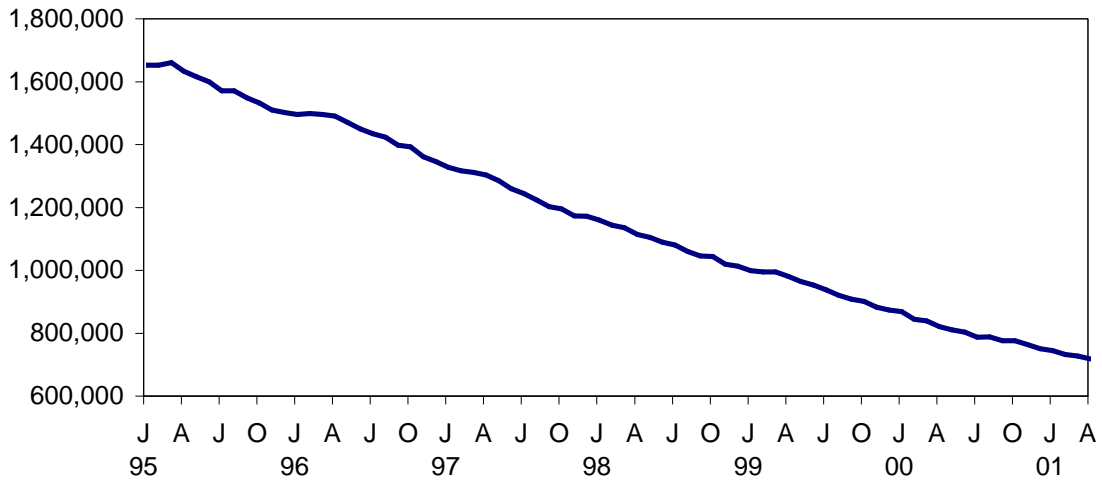
Table of Contents

Page Number

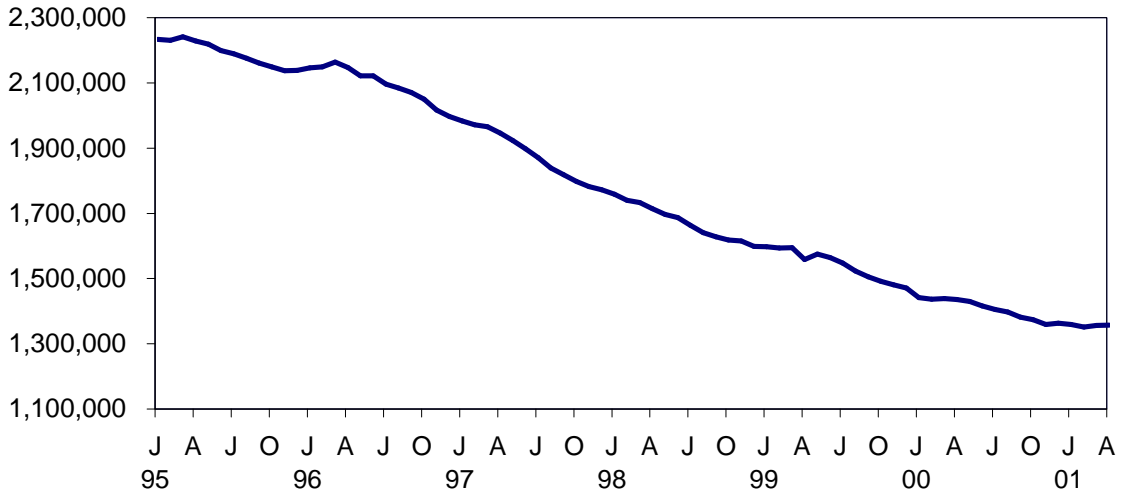
Graphs	4
Summary Tables.....	5
Temporary Assistance by Program Area	6
Temporary Assistance by Funding Source	10
Other Programs	18

NEW YORK STATE JANUARY 1995 - APRIL 2001

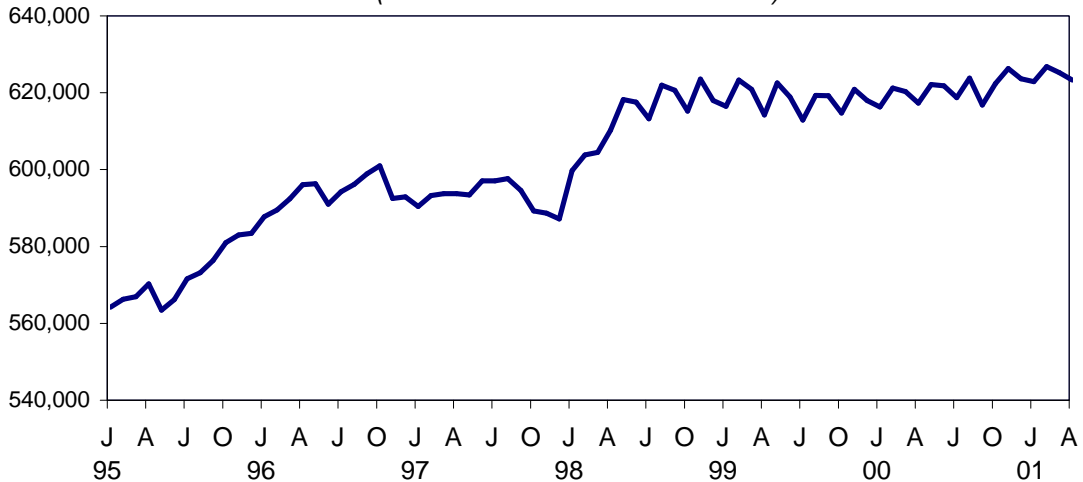
TEMPORARY ASSISTANCE RECIPIENTS



FOOD STAMPS PERSONS



SSI PERSONS (INCLUDING MENTAL HYGIENE)



SELECTED SUMMARY PROGRAM DATA
BY REGION

Table 1
TEMPORARY AND DISABILITY ASSISTANCE CASES
April 2001

Region	Cases				
	Temporary Assistance by Program			Supplemental Security Income	Food Stamps
	Total	Family Assistance	Safety Net Assistance		
New York State	334,165	221,797	112,368	608,140	668,154
New York City	242,662	160,116	82,546	392,506	432,859
Rest of State	91,503	61,681	29,822	215,634	235,295

Table 2
TEMPORARY AND DISABILITY ASSISTANCE RECIPIENTS
April 2001

Region	Recipients				
	Temporary Assistance by Program			Supplemental Security Income	Food Stamps
	Total	Family Assistance	Safety Net Assistance		
New York State	710,007	589,692	120,315	608,140	1,326,751
New York City	511,561	424,279	87,282	392,506	842,343
Rest of State	198,446	165,413	33,033	215,634	484,408

Table 3
TEMPORARY AND DISABILITY ASSISTANCE EXPENDITURES
April 2001

Region	Expenditures				
	Temporary Assistance by Program			Supplemental Security Income	Food Stamps
	Total	Family Assistance	Safety Net Assistance		
New York State	\$151,900,655	\$114,475,360	\$37,425,295	\$279,482,070	\$116,046,838
New York City	102,694,000	79,423,000	23,271,000	185,793,576	79,266,842
Rest of State	49,206,655	35,052,360	14,154,295	93,688,494	36,779,996

Note: SSI data listed here do not include Mental Hygiene data. See Tables 17 - 19 for total SSI data.

Table 4
 TEMPORARY ASSISTANCE
 Year to Year Monthly Comparison by Local District
 Cases, Recipients and Expenditures
 April 2001

Local District	April 2001			April 2000			April 1999		
	Cases	Recipients	Expenditures	Cases	Recipients	Expenditures	Cases	Recipients	Expenditures
New York State	334,165	710,007	\$151,900,655	375,335	813,053	\$ 163,570,498	436,589	972,292	\$ 192,248,500
New York City*	242,662	511,561	102,694,000	272,113	584,070	112,789,000	313,881	691,167	129,576,000
Rest of State	91,503	198,446	49,206,655	103,222	228,983	50,781,498	122,708	281,125	62,672,500
Albany	3,255	7,233	1,621,782	3,351	7,512	1,791,286	3,594	8,546	1,786,085
Allegany	493	1,128	179,667	578	1,332	226,484	793	1,970	319,828
Broome	1,900	4,109	869,497	2,265	5,148	938,527	2,787	6,628	1,321,422
Cattaraugus	629	1,319	258,071	669	1,451	258,443	853	1,927	322,700
Cayuga	407	890	165,177	441	989	179,879	510	1,137	202,880
Chautauqua	2,029	4,318	882,905	2,121	4,688	846,265	2,368	5,534	981,227
Chemung	841	1,866	341,397	962	2,199	392,387	1,058	2,534	399,208
Chenango	228	507	106,267	264	560	113,610	343	862	143,508
Clinton	590	1,100	254,075	584	1,150	236,599	658	1,342	251,079
Columbia	384	709	157,923	392	793	163,657	534	1,138	205,269
Cortland	379	830	169,281	409	934	191,830	514	1,260	243,081
Delaware	192	355	73,728	207	396	92,215	215	436	88,351
Dutchess	1,317	2,504	693,225	1,533	3,068	726,534	1,853	3,930	857,429
Erie	14,393	31,734	6,106,046	17,002	38,069	6,652,368	21,066	48,038	8,818,262
Essex	209	426	72,237	250	488	97,079	303	654	148,485
Franklin	300	593	122,684	352	686	121,200	490	996	172,418
Fulton	378	704	157,124	421	905	167,862	476	1,048	178,391
Genesee	277	580	121,814	301	642	138,510	324	755	151,580
Greene	406	800	184,278	419	869	170,951	483	1,045	196,207
Hamilton	18	29	6,240	15	22	5,853	26	51	8,415
Herkimer	306	624	120,236	376	803	137,578	422	960	156,431
Jefferson	1,032	2,112	459,066	1,263	2,619	523,349	1,536	3,285	680,119
Lewis	121	245	43,058	143	289	49,716	195	425	69,217
Livingston	535	1,029	236,325	480	998	204,463	596	1,231	241,987
Madison	170	296	72,256	177	336	69,526	204	408	80,418
Monroe	14,497	32,629	8,430,694	16,642	38,382	8,702,219	18,769	44,253	10,983,735
Montgomery	286	579	126,693	311	632	130,362	338	742	124,677
Nassau	4,441	8,963	2,501,608	5,012	10,236	2,643,171	6,112	12,826	3,123,104
Niagara	2,469	5,180	990,682	2,773	5,814	1,030,883	3,361	7,445	1,362,432
Oneida	2,274	5,673	1,013,390	2,611	6,522	1,141,011	3,294	8,421	1,452,823
Onondaga	5,728	12,776	2,573,108	5,983	13,838	2,593,650	7,098	17,040	3,298,730
Ontario	559	1,068	244,792	548	1,050	236,501	662	1,422	285,309
Orange	2,870	7,622	1,554,970	3,107	7,976	1,786,832	3,334	8,883	1,875,608
Orleans	485	1,099	212,260	484	1,111	216,369	463	1,068	219,281
Oswego	784	1,707	362,895	828	1,970	366,861	1,168	2,825	484,097
Otsego	109	173	52,678	112	187	52,965	150	280	64,060
Putnam	120	187	75,188	132	214	81,417	144	257	115,698
Rensselaer	1,102	2,405	520,273	1,189	2,669	520,751	1,406	3,195	614,937
Rockland	1,144	3,375	650,468	1,278	3,704	709,928	1,568	4,359	845,747
St.Lawrence	1,028	2,054	391,651	1,235	2,580	456,434	1,553	3,375	592,591
Saratoga	242	373	105,652	256	430	115,545	289	498	121,236
Schenectady	1,053	2,272	492,890	1,097	2,493	495,317	1,320	3,260	615,870
Schoharie	87	154	40,529	101	176	44,758	130	261	70,077
Schuyler	114	226	43,968	114	242	45,712	149	312	61,613
Seneca	184	344	73,527	189	396	74,407	178	381	77,155
Steuben	761	1,523	305,220	989	2,088	382,562	1,361	3,169	527,950
Suffolk	7,046	14,217	5,045,574	7,764	16,300	4,692,373	9,357	20,281	5,793,520
Sullivan	570	1,144	252,166	574	1,226	253,851	681	1,632	303,707
Tioga	266	562	114,129	332	734	132,409	402	942	158,561
Tompkins	649	1,244	304,940	670	1,330	299,363	752	1,531	334,950
Ulster	1,195	2,346	613,049	1,330	2,551	694,110	1,664	3,483	795,793
Warren	277	516	140,438	259	490	110,071	291	653	119,179
Washington	282	520	105,152	351	689	164,134	488	1,001	202,842
Wayne	473	868	201,237	569	1,198	234,537	713	1,575	301,429
Westchester	9,335	20,078	8,079,693	11,131	24,237	7,762,047	12,998	29,007	9,593,459
Wyoming	199	378	75,301	179	361	72,365	198	381	83,189
Yates	85	151	37,481	97	211	42,412	116	227	45,144

* Expenditures partially estimated.

Table 5
TEMPORARY ASSISTANCE
Cases, Recipients, Children, Adults and Expenditures by Local District
April 2001

Local District	Temporary Assistance				
	Cases	Recipients	Children	Adults	Expenditures
New York State	334,165	710,007	416,986	293,021	\$151,900,655
New York City*	242,662	511,561	294,615	216,946	102,694,000
Rest of State	91,503	198,446	122,371	76,075	49,206,655
Albany	3,255	7,233	4,397	2,836	1,621,782
Allegany	493	1,128	701	427	179,667
Broome	1,900	4,109	2,575	1,534	869,497
Cattaraugus	629	1,319	823	496	258,071
Cayuga	407	890	586	304	165,177
Chautauqua	2,029	4,318	2,592	1,726	882,905
Chemung	841	1,866	1,243	623	341,397
Chenango	228	507	346	161	106,267
Clinton	590	1,100	646	454	254,075
Columbia	384	709	422	287	157,923
Cortland	379	830	498	332	169,281
Delaware	192	355	221	134	73,728
Dutchess	1,317	2,504	1,602	902	693,225
Erie	14,393	31,734	19,137	12,597	6,106,046
Essex	209	426	244	182	72,237
Franklin	300	593	363	230	122,684
Fulton	378	704	396	308	157,124
Genesee	277	580	371	209	121,814
Greene	406	800	465	335	184,278
Hamilton	18	29	14	15	6,240
Herkimer	306	624	392	232	120,236
Jefferson	1,032	2,112	1,174	938	459,066
Lewis	121	245	144	101	43,058
Livingston	535	1,029	510	519	236,325
Madison	170	296	216	80	72,256
Monroe	14,497	32,629	20,199	12,430	8,430,694
Montgomery	286	579	356	223	126,693
Nassau	4,441	8,963	5,803	3,160	2,501,608
Niagara	2,469	5,180	3,165	2,015	990,682
Oneida	2,274	5,673	3,702	1,971	1,013,390
Onondaga	5,728	12,776	8,165	4,611	2,573,108
Ontario	559	1,068	603	465	244,792
Orange	2,870	7,622	5,119	2,503	1,554,970
Orleans	485	1,099	648	451	212,260
Oswego	784	1,707	1,115	592	362,895
Otsego	109	173	110	63	52,678
Putnam	120	187	103	84	75,188
Rensselaer	1,102	2,405	1,482	923	520,273
Rockland	1,144	3,375	2,262	1,113	650,468
St. Lawrence	1,028	2,054	1,173	881	391,651
Saratoga	242	373	285	88	105,652
Schenectady	1,053	2,272	1,570	702	492,890
Schoharie	87	154	102	52	40,529
Schuyler	114	226	136	90	43,968
Seneca	184	344	204	140	73,527
Steuben	761	1,523	896	627	305,220
Suffolk	7,046	14,217	8,626	5,591	5,045,574
Sullivan	570	1,144	745	399	252,166
Tioga	266	562	363	199	114,129
Tompkins	649	1,244	688	556	304,940
Ulster	1,195	2,346	1,530	816	613,049
Warren	277	516	282	234	140,438
Washington	282	520	317	203	105,152
Wayne	473	868	532	336	201,237
Westchester	9,335	20,078	11,725	8,353	8,079,693
Wyoming	199	378	204	174	75,301
Yates	85	151	83	68	37,481

* Expenditures partially estimated.

Table 6
FAMILY ASSISTANCE
Cases, Recipients, Children, Adults and Expenditures by Local District
April 2001

Local District	Family Assistance				
	Cases	Recipients	Children	Adults	Expenditures
New York State	221,797	589,692	411,599	178,093	\$114,475,360
New York City*	160,116	424,279	292,554	131,725	79,423,000
Rest of State	61,681	165,413	119,045	46,368	35,052,360
Albany	2,309	6,230	4,336	1,894	1,143,215
Allegany	381	1,011	697	314	146,148
Broome	1,340	3,485	2,507	978	601,580
Cattaraugus	451	1,127	814	313	189,319
Cayuga	312	782	573	209	121,283
Chautauqua	1,416	3,664	2,543	1,121	687,160
Chemung	660	1,668	1,216	452	263,436
Chenango	179	453	340	113	80,685
Clinton	374	872	633	239	160,505
Columbia	262	585	417	168	113,143
Cortland	263	699	482	217	120,331
Delaware	133	291	220	71	56,172
Dutchess	853	1,983	1,516	467	471,343
Erie	9,870	27,057	19,007	8,050	4,464,248
Essex	145	358	242	116	52,559
Franklin	215	508	362	146	96,180
Fulton	241	545	379	166	97,535
Genesee	188	488	362	126	87,658
Greene	289	681	460	221	137,194
Hamilton	9	19	13	6	3,265
Herkimer	222	537	385	152	92,200
Jefferson	674	1,728	1,159	569	317,074
Lewis	88	209	138	71	34,304
Livingston	319	784	488	296	148,017
Madison	120	244	207	37	49,259
Monroe	9,303	26,289	19,040	7,249	5,863,949
Montgomery	178	470	356	114	73,038
Nassau	3,049	7,400	5,623	1,777	1,800,272
Niagara	1,706	4,332	3,079	1,253	691,566
Oneida	1,639	4,944	3,606	1,338	740,981
Onondaga	3,985	10,894	7,976	2,918	1,909,809
Ontario	348	845	589	256	145,821
Orange	2,109	6,786	5,047	1,739	1,187,806
Orleans	362	972	643	329	163,887
Oswego	595	1,505	1,096	409	270,518
Otsego	65	125	107	18	26,743
Putnam	62	120	92	28	39,191
Rensselaer	832	2,125	1,472	653	362,859
Rockland	735	2,910	2,217	693	405,778
St.Lawrence	735	1,745	1,160	585	288,671
Saratoga	170	297	275	22	68,513
Schenectady	770	1,946	1,520	426	356,875
Schoharie	59	126	102	24	30,184
Schuyler	81	190	134	56	33,500
Seneca	124	273	191	82	51,171
Steuben	500	1,249	883	366	204,110
Suffolk	4,156	10,979	8,251	2,728	3,769,747
Sullivan	398	951	721	230	184,691
Tioga	215	506	359	147	93,218
Tompkins	410	985	663	322	186,185
Ulster	857	1,945	1,460	485	439,850
Warren	167	403	279	124	86,640
Washington	196	429	309	120	76,557
Wayne	291	670	510	160	131,592
Westchester	6,101	16,584	11,510	5,074	5,565,770
Wyoming	122	296	198	98	49,401
Yates	48	114	81	33	19,654

* Expenditures partially estimated.

Table 7
SAFETY NET ASSISTANCE
Cases, Recipients, Children, Adults and Expenditures by Local District
April 2001

Local District	Safety Net Assistance				
	Cases	Recipients	Children	Adults	Expenditures
New York State	112,368	120,315	5,387	114,928	\$37,425,295
New York City*	82,546	87,282	2,061	85,221	23,271,000
Rest of State	29,822	33,033	3,326	29,707	14,154,295
Albany	946	1,003	61	942	478,567
Allegany	112	117	4	113	33,519
Broome	560	624	68	556	267,917
Cattaraugus	178	192	9	183	68,752
Cayuga	95	108	13	95	43,894
Chautauqua	613	654	49	605	195,745
Chemung	181	198	27	171	77,961
Chenango	49	54	6	48	25,582
Clinton	216	228	13	215	93,570
Columbia	122	124	5	119	44,780
Cortland	116	131	16	115	48,950
Delaware	59	64	1	63	17,556
Dutchess	464	521	86	435	221,882
Erie	4,523	4,677	130	4,547	1,641,798
Essex	64	68	2	66	19,678
Franklin	85	85	1	84	26,504
Fulton	137	159	17	142	59,589
Genesee	89	92	9	83	34,156
Greene	117	119	5	114	47,084
Hamilton	9	10	1	9	2,975
Herkimer	84	87	7	80	28,036
Jefferson	358	384	15	369	141,992
Lewis	33	36	6	30	8,754
Livingston	216	245	22	223	88,308
Madison	50	52	9	43	22,997
Monroe	5,194	6,340	1,159	5,181	2,566,745
Montgomery	108	109	0	109	53,655
Nassau	1,392	1,563	180	1,383	701,336
Niagara	763	848	86	762	299,116
Oneida	635	729	96	633	272,409
Onondaga	1,743	1,882	189	1,693	663,299
Ontario	211	223	14	209	98,971
Orange	761	836	72	764	367,164
Orleans	123	127	5	122	48,373
Oswego	189	202	19	183	92,377
Otsego	44	48	3	45	25,935
Putnam	58	67	11	56	35,997
Rensselaer	270	280	10	270	157,414
Rockland	409	465	45	420	244,690
St.Lawrence	293	309	13	296	102,980
Saratoga	72	76	10	66	37,139
Schenectady	283	326	50	276	136,015
Schoharie	28	28	0	28	10,345
Schuyler	33	36	2	34	10,468
Seneca	60	71	13	58	22,356
Steuben	261	274	13	261	101,110
Suffolk	2,890	3,238	375	2,863	1,275,827
Sullivan	172	193	24	169	67,475
Tioga	51	56	4	52	20,911
Tompkins	239	259	25	234	118,755
Ulster	338	401	70	331	173,199
Warren	110	113	3	110	53,798
Washington	86	91	8	83	28,595
Wayne	182	198	22	176	69,645
Westchester	3,234	3,494	215	3,279	2,513,923
Wyoming	77	82	6	76	25,900
Yates	37	37	2	35	17,827

* Expenditures partially estimated.

Table 8
 TEMPORARY ASSISTANCE BY FUNDING SOURCE
 Cases, Recipients and Expenditures by Local District
 April 2001

Local District	Total			Federally Participating - TANF Family Assistance and Safety Net - FP			Federally Non-Participating Safety Net Assistance - FNP		
	Cases	Recipients	Expenditures	Cases	Recipients	Expenditures	Cases	Recipients	Expenditures
New York State	334,165	710,007	\$151,900,655	223,232	593,551	\$115,410,645	110,933	116,456	\$36,490,010
New York City*	242,662	511,561	102,694,000	160,302	424,738	79,473,000	82,360	86,823	23,221,000
Rest of State	91,503	198,446	49,206,655	62,930	168,813	35,937,645	28,573	29,633	13,269,010
Albany	3,255	7,233	1,621,782	2,336	6,297	1,158,797	919	936	462,985
Allegany	493	1,128	179,667	381	1,011	146,148	112	117	33,519
Broome	1,900	4,109	869,497	1,377	3,563	620,255	523	546	249,242
Cattaraugus	629	1,319	258,071	453	1,131	189,872	176	188	68,199
Cayuga	407	890	165,177	316	797	123,353	91	93	41,824
Chautauqua	2,029	4,318	882,905	1,441	3,713	697,547	588	605	185,358
Chemung	841	1,866	341,397	667	1,685	267,434	174	181	73,963
Chenango	228	507	106,267	180	458	81,234	48	49	25,033
Clinton	590	1,100	254,075	379	884	162,119	211	216	91,956
Columbia	384	709	157,923	262	585	113,143	122	124	44,780
Cortland	379	830	169,281	268	715	122,866	111	115	46,415
Delaware	192	355	73,728	135	293	56,485	57	62	17,243
Dutchess	1,317	2,504	693,225	881	2,050	492,450	436	454	200,775
Erie	14,393	31,734	6,106,046	9,887	27,105	4,472,833	4,506	4,629	1,633,213
Essex	209	426	72,237	146	360	52,861	63	66	19,376
Franklin	300	593	122,684	215	508	96,180	85	85	26,504
Fulton	378	704	157,124	250	571	101,420	128	133	55,704
Genesee	277	580	121,814	189	489	87,867	88	91	33,947
Greene	406	800	184,278	290	682	138,189	116	118	46,089
Hamilton	18	29	6,240	9	19	3,265	9	10	2,975
Herkimer	306	624	120,236	226	544	94,226	80	80	26,010
Jefferson	1,032	2,112	459,066	687	1,755	322,904	345	357	136,162
Lewis	121	245	43,058	88	209	34,304	33	36	8,754
Livingston	535	1,029	236,325	333	817	159,120	202	212	77,205
Madison	170	296	72,256	120	244	49,259	50	52	22,997
Monroe	14,497	32,629	8,430,694	9,867	27,846	6,267,849	4,630	4,783	2,162,845
Montgomery	286	579	126,693	178	470	73,038	108	109	53,655
Nassau	4,441	8,963	2,501,608	3,113	7,576	1,844,164	1,328	1,387	657,444
Niagara	2,469	5,180	990,682	1,754	4,459	712,681	715	721	278,001
Oneida	2,274	5,673	1,013,390	1,665	5,023	763,008	609	650	250,382
Onondaga	5,728	12,776	2,573,108	4,026	10,999	1,930,997	1,702	1,777	642,111
Ontario	559	1,068	244,792	352	855	147,228	207	213	97,564
Orange	2,870	7,622	1,554,970	2,136	6,862	1,206,247	734	760	348,723
Orleans	485	1,099	212,260	362	972	163,887	123	127	48,373
Oswego	784	1,707	362,895	600	1,521	272,555	184	186	90,340
Otsego	109	173	52,678	66	128	27,420	43	45	25,258
Putnam	120	187	75,188	64	125	41,120	56	62	34,068
Rensselaer	1,102	2,405	520,273	835	2,131	364,595	267	274	155,678
Rockland	1,144	3,375	650,468	756	2,967	418,921	388	408	231,547
St. Lawrence	1,028	2,054	391,651	742	1,764	291,774	286	290	99,877
Saratoga	242	373	105,652	171	300	68,840	71	73	36,812
Schenectady	1,053	2,272	492,890	792	2,001	367,061	261	271	125,829
Schoharie	87	154	40,529	59	126	30,184	28	28	10,345
Schuyler	114	226	43,968	81	190	33,500	33	36	10,468
Seneca	184	344	73,527	129	287	53,725	55	57	19,802
Steuben	761	1,523	305,220	504	1,260	206,891	257	263	98,329
Suffolk	7,046	14,217	5,045,574	4,250	11,268	3,888,788	2,796	2,949	1,156,786
Sullivan	570	1,144	252,166	401	962	185,998	169	182	66,168
Tioga	266	562	114,129	217	511	93,854	49	51	20,275
Tompkins	649	1,244	304,940	421	1,004	191,947	228	240	112,993
Ulster	1,195	2,346	613,049	886	2,030	456,126	309	316	156,923
Warren	277	516	140,438	167	403	86,640	110	113	53,798
Washington	282	520	105,152	198	432	76,653	84	88	28,499
Wayne	473	868	201,237	295	679	133,431	178	189	67,806
Westchester	9,335	20,078	8,079,693	6,156	16,764	5,624,659	3,179	3,314	2,455,034
Wyoming	199	378	75,301	123	299	50,079	76	79	25,222
Yates	85	151	37,481	48	114	19,654	37	37	17,827

* Expenditures partially estimated.

Table 9
 TEMPORARY ASSISTANCE TO NEEDY FAMILIES (TANF) - FP BY PROGRAM
 Cases, Recipients, Children, Adults and Expenditures by Local District
 April 2001

Local District	Family Assistance					Safety Net Assistance - FP				
	Cases	Recipients	Children	Adults	Expenditures	Cases	Recipients	Children	Adults	Expenditures
New York State	221,797	589,692	411,599	178,093	\$114,475,360	1,435	3,859	2,360	1,499	\$935,285
New York City*	160,116	424,279	292,554	131,725	79,423,000	186	459	249	210	50,000
Rest of State	61,681	165,413	119,045	46,368	35,052,360	1,249	3,400	2,111	1,289	885,285
Albany	2,309	6,230	4,336	1,894	1,143,215	27	67	39	28	15,582
Allegany	381	1,011	697	314	146,148	0	0	0	0	0
Broome	1,340	3,485	2,507	978	601,580	37	78	38	40	18,675
Cattaraugus	451	1,127	814	313	189,319	2	4	3	1	553
Cayuga	312	782	573	209	121,283	4	15	10	5	2,070
Chautauqua	1,416	3,664	2,543	1,121	687,160	25	49	35	14	10,387
Chemung	660	1,668	1,216	452	263,436	7	17	10	7	3,998
Chenango	179	453	340	113	80,685	1	5	4	1	549
Clinton	374	872	633	239	160,505	5	12	7	5	1,614
Columbia	262	585	417	168	113,143	0	0	0	0	0
Cortland	263	699	482	217	120,331	5	16	10	6	2,535
Delaware	133	291	220	71	56,172	2	2	0	2	313
Dutchess	853	1,983	1,516	467	471,343	28	67	36	31	21,107
Erie	9,870	27,057	19,007	8,050	4,464,248	17	48	27	21	8,585
Essex	145	358	242	116	52,559	1	2	1	1	302
Franklin	215	508	362	146	96,180	0	0	0	0	0
Fulton	241	545	379	166	97,535	9	26	15	11	3,885
Genesee	188	488	362	126	87,658	1	1	0	1	209
Greene	289	681	460	221	137,194	1	1	0	1	995
Hamilton	9	19	13	6	3,265	0	0	0	0	0
Herkimer	222	537	385	152	92,200	4	7	4	3	2,026
Jefferson	674	1,728	1,159	569	317,074	13	27	11	16	5,830
Lewis	88	209	138	71	34,304	0	0	0	0	0
Livingston	319	784	488	296	148,017	14	33	16	17	11,103
Madison	120	244	207	37	49,259	0	0	0	0	0
Monroe	9,303	26,289	19,040	7,249	5,863,949	564	1,557	1,001	556	403,900
Montgomery	178	470	356	114	73,038	0	0	0	0	0
Nassau	3,049	7,400	5,623	1,777	1,800,272	64	176	109	67	43,892
Niagara	1,706	4,332	3,079	1,253	691,566	48	127	75	52	21,115
Oneida	1,639	4,944	3,606	1,338	740,981	26	79	51	28	22,027
Onondaga	3,985	10,894	7,976	2,918	1,909,809	41	105	62	43	21,188
Ontario	348	845	589	256	145,821	4	10	6	4	1,407
Orange	2,109	6,786	5,047	1,739	1,187,806	27	76	44	32	18,441
Orleans	362	972	643	329	163,887	0	0	0	0	0
Oswego	595	1,505	1,096	409	270,518	5	16	11	5	2,037
Otsego	65	125	107	18	26,743	1	3	2	1	677
Putnam	62	120	92	28	39,191	2	5	3	2	1,929
Rensselaer	832	2,125	1,472	653	362,859	3	6	3	3	1,736
Rockland	735	2,910	2,217	693	405,778	21	57	37	20	13,143
St.Lawrence	735	1,745	1,160	585	288,671	7	19	8	11	3,103
Saratoga	170	297	275	22	68,513	1	3	2	1	327
Schenectady	770	1,946	1,520	426	356,875	22	55	31	24	10,186
Schoharie	59	126	102	24	30,184	0	0	0	0	0
Schuyler	81	190	134	56	33,500	0	0	0	0	0
Seneca	124	273	191	82	51,171	5	14	9	5	2,554
Steuben	500	1,249	883	366	204,110	4	11	6	5	2,781
Suffolk	4,156	10,979	8,251	2,728	3,769,747	94	289	192	97	119,041
Sullivan	398	951	721	230	184,691	3	11	7	4	1,307
Tioga	215	506	359	147	93,218	2	5	2	3	636
Tompkins	410	985	663	322	186,185	11	19	7	12	5,762
Ulster	857	1,945	1,460	485	439,850	29	85	52	33	16,276
Warren	167	403	279	124	86,640	0	0	0	0	0
Washington	196	429	309	120	76,557	2	3	1	2	96
Wayne	291	670	510	160	131,592	4	9	5	4	1,839
Westchester	6,101	16,584	11,510	5,074	5,565,770	55	180	117	63	58,889
Wyoming	122	296	198	98	49,401	1	3	2	1	678
Yates	48	114	81	33	19,654	0	0	0	0	0

* Expenditures partially estimated.

Table 10
SAFETY NET ASSISTANCE - FNP
Cases, Recipients, Children, Adults and Expenditures by Local District
April 2001

Local District	Safety Net Assistance - FNP				
	Cases	Recipients	Children	Adults	Expenditures
New York State	110,933	116,456	3,027	113,429	\$36,490,010
New York City*	82,360	86,823	1,812	85,011	23,221,000
Rest of State	28,573	29,633	1,215	28,418	13,269,010
Albany	919	936	22	914	462,985
Allegany	112	117	4	113	33,519
Broome	523	546	30	516	249,242
Cattaraugus	176	188	6	182	68,199
Cayuga	91	93	3	90	41,824
Chautauqua	588	605	14	591	185,358
Chemung	174	181	17	164	73,963
Chenango	48	49	2	47	25,033
Clinton	211	216	6	210	91,956
Columbia	122	124	5	119	44,780
Cortland	111	115	6	109	46,415
Delaware	57	62	1	61	17,243
Dutchess	436	454	50	404	200,775
Erie	4,506	4,629	103	4,526	1,633,213
Essex	63	66	1	65	19,376
Franklin	85	85	1	84	26,504
Fulton	128	133	2	131	55,704
Genesee	88	91	9	82	33,947
Greene	116	118	5	113	46,089
Hamilton	9	10	1	9	2,975
Herkimer	80	80	3	77	26,010
Jefferson	345	357	4	353	136,162
Lewis	33	36	6	30	8,754
Livingston	202	212	6	206	77,205
Madison	50	52	9	43	22,997
Monroe	4,630	4,783	158	4,625	2,162,845
Montgomery	108	109	0	109	53,655
Nassau	1,328	1,387	71	1,316	657,444
Niagara	715	721	11	710	278,001
Oneida	609	650	45	605	250,382
Onondaga	1,702	1,777	127	1,650	642,111
Ontario	207	213	8	205	97,564
Orange	734	760	28	732	348,723
Orleans	123	127	5	122	48,373
Oswego	184	186	8	178	90,340
Otsego	43	45	1	44	25,258
Putnam	56	62	8	54	34,068
Rensselaer	267	274	7	267	155,678
Rockland	388	408	8	400	231,547
St. Lawrence	286	290	5	285	99,877
Saratoga	71	73	8	65	36,812
Schenectady	261	271	19	252	125,829
Schoharie	28	28	0	28	10,345
Schuyler	33	36	2	34	10,468
Seneca	55	57	4	53	19,802
Steuben	257	263	7	256	98,329
Suffolk	2,796	2,949	183	2,766	1,156,786
Sullivan	169	182	17	165	66,168
Tioga	49	51	2	49	20,275
Tompkins	228	240	18	222	112,993
Ulster	309	316	18	298	156,923
Warren	110	113	3	110	53,798
Washington	84	88	7	81	28,499
Wayne	178	189	17	172	67,806
Westchester	3,179	3,314	98	3,216	2,455,034
Wyoming	76	79	4	75	25,222
Yates	37	37	2	35	17,827

* Expenditures partially estimated.

Table 11
SAFETY NET ASSISTANCE - FNP BY CASE SIZE CATEGORY
Cases, Recipients, Children, Adults and Expenditures by Local District
April 2001

Local District	One Person					Multi-Person				
	Cases	Recipients	Children	Adults	Expenditures	Cases	Recipients	Children	Adults	Expenditures
New York State	See Note	See Note	See Note	See Note	See Note	See Note	See Note	See Note	See Note	See Note
New York City	See Note	See Note	See Note	See Note	See Note	See Note	See Note	See Note	See Note	See Note
Rest of State	27,724	27,724	605	27,119	\$12,783,209	849	1,909	610	1,299	\$485,801
Albany	903	903	8	895	456,989	16	33	14	19	5,996
Allegany	108	108	1	107	32,377	4	9	3	6	1,142
Broome	502	502	14	488	239,548	21	44	16	28	9,694
Cattaraugus	167	167	1	166	64,440	9	21	5	16	3,759
Cayuga	89	89	1	88	41,140	2	4	2	2	684
Chautauqua	574	574	6	568	178,556	14	31	8	23	6,802
Chemung	167	167	7	160	70,961	7	14	10	4	3,002
Chenango	47	47	0	47	24,768	1	2	2	0	265
Clinton	206	206	5	201	90,580	5	10	1	9	1,376
Columbia	120	120	3	117	44,019	2	4	2	2	761
Cortland	107	107	4	103	44,998	4	8	2	6	1,417
Delaware	54	54	1	53	15,997	3	8	0	8	1,246
Dutchess	422	422	34	388	190,452	14	32	16	16	10,323
Erie	4,408	4,408	49	4,359	1,576,757	98	221	54	167	56,456
Essex	61	61	1	60	19,108	2	5	0	5	268
Franklin	85	85	1	84	26,504	0	0	0	0	0
Fulton	123	123	1	122	53,818	5	10	1	9	1,886
Genesee	86	86	4	82	33,073	2	5	5	0	874
Greene	114	114	3	111	45,254	2	4	2	2	835
Hamilton	8	8	0	8	2,553	1	2	1	1	422
Herkimer	80	80	3	77	26,010	0	0	0	0	0
Jefferson	334	334	3	331	131,076	11	23	1	22	5,086
Lewis	31	31	1	30	7,640	2	5	5	0	1,114
Livingston	192	192	4	188	74,212	10	20	2	18	2,993
Madison	48	48	5	43	21,919	2	4	4	0	1,078
Monroe	4,507	4,507	58	4,449	2,093,186	123	276	100	176	69,659
Montgomery	107	107	0	107	53,276	1	2	0	2	379
Nassau	1,278	1,278	35	1,243	633,237	50	109	36	73	24,207
Niagara	710	710	9	701	275,754	5	11	2	9	2,247
Oneida	573	573	18	555	235,625	36	77	27	50	14,757
Onondaga	1,647	1,647	76	1,571	616,880	55	130	51	79	25,231
Ontario	202	202	4	198	94,556	5	11	4	7	3,008
Orange	712	712	19	693	338,046	22	48	9	39	10,677
Orleans	119	119	3	116	46,914	4	8	2	6	1,459
Oswego	183	183	5	178	89,670	1	3	3	0	670
Otsego	42	42	1	41	24,747	1	3	0	3	511
Putnam	51	51	4	47	29,989	5	11	4	7	4,079
Rensselaer	261	261	0	261	150,895	6	13	7	6	4,783
Rockland	370	370	3	367	220,132	18	38	5	33	11,415
St. Lawrence	282	282	4	278	97,747	4	8	1	7	2,130
Saratoga	69	69	6	63	33,787	2	4	2	2	3,025
Schenectady	254	254	10	244	118,401	7	17	9	8	7,428
Schoharie	28	28	0	28	10,345	0	0	0	0	0
Schuyler	30	30	1	29	9,704	3	6	1	5	764
Seneca	53	53	3	50	19,586	2	4	1	3	216
Steuben	253	253	2	251	96,783	4	10	5	5	1,546
Suffolk	2,698	2,698	83	2,615	1,097,011	98	251	100	151	59,775
Sullivan	162	162	7	155	61,084	7	20	10	10	5,084
Tioga	47	47	2	45	20,042	2	4	0	4	233
Tompkins	219	219	8	211	109,521	9	21	10	11	3,472
Ulster	303	303	8	295	153,639	6	13	10	3	3,284
Warren	107	107	3	104	52,656	3	6	0	6	1,142
Washington	80	80	5	75	27,777	4	8	2	6	722
Wayne	169	169	11	158	62,318	9	20	6	14	5,488
Westchester	3,062	3,062	51	3,011	2,355,287	117	252	47	205	99,747
Wyoming	73	73	4	69	24,038	3	6	0	6	1,184
Yates	37	37	2	35	17,827	0	0	0	0	0

Note: A breakout of One-Person and Multi-Person cases is not available for New York City.

Table 12
SAFETY NET ASSISTANCE - FNP - CASH TOTAL
Cases, Recipients, Children, Adults and Expenditures by Local District
April 2001

Local District	Safety Net Assistance - FNP - Cash Total				
	Cases	Recipients	Children	Adults	Expenditures
New York State	89,295	94,327	2,434	91,893	See Note
New York City	68,078	72,194	1,443	70,751	See Note
Rest of State	21,217	22,133	991	21,142	\$9,646,321
Albany	917	934	22	912	462,364
Allegany	98	103	4	99	29,363
Broome	361	380	26	354	151,151
Cattaraugus	159	171	5	166	63,238
Cayuga	68	69	0	69	27,977
Chautauqua	489	506	14	492	149,132
Chemung	148	155	17	138	53,997
Chenango	40	40	0	40	20,520
Clinton	172	177	5	172	71,925
Columbia	110	111	3	108	38,132
Cortland	93	97	5	92	37,992
Delaware	47	52	1	51	12,681
Dutchess	230	245	29	216	88,644
Erie	3,311	3,417	97	3,320	1,220,698
Essex	52	55	0	55	17,218
Franklin	65	65	1	64	20,784
Fulton	94	98	1	97	40,783
Genesee	68	69	5	64	25,307
Greene	91	92	1	91	29,008
Hamilton	9	10	1	9	2,975
Herkimer	69	69	3	66	19,818
Jefferson	254	265	2	263	94,134
Lewis	22	25	6	19	5,775
Livingston	165	175	6	169	60,814
Madison	40	42	9	33	15,123
Monroe	2,533	2,636	116	2,520	1,108,165
Montgomery	100	101	0	101	51,849
Nassau	990	1,034	35	999	454,784
Niagara	404	407	8	399	143,857
Oneida	452	488	40	448	153,664
Onondaga	1,425	1,496	103	1,393	515,644
Ontario	147	152	7	145	57,966
Orange	473	493	13	480	181,983
Orleans	117	121	4	117	46,727
Oswego	148	150	8	142	71,885
Otsego	30	32	1	31	13,193
Putnam	32	37	3	34	19,246
Rensselaer	195	201	6	195	108,676
Rockland	169	184	8	176	100,677
St. Lawrence	246	250	5	245	76,221
Saratoga	58	60	7	53	29,166
Schenectady	193	202	19	183	86,325
Schoharie	24	24	0	24	8,047
Schuyler	25	27	1	26	7,181
Seneca	38	39	4	35	12,415
Steuben	201	207	7	200	70,483
Suffolk	2,298	2,445	156	2,289	965,340
Sullivan	111	119	13	106	38,358
Tioga	46	48	1	47	18,623
Tompkins	146	156	17	139	69,509
Ulster	221	227	17	210	102,481
Warren	96	99	3	96	38,490
Washington	75	79	5	74	25,341
Wayne	141	152	17	135	52,988
Westchester	2,804	2,935	98	2,837	2,217,962
Wyoming	71	74	4	70	21,981
Yates	36	36	2	34	17,541

Note: A breakout of Safety Net Assistance - FNP - Cash and Safety Net Assistance - FNP - Non-Cash expenditures is not available for New York City.

Table 13
 SAFETY NET ASSISTANCE - FNP - CASH BY CASE SIZE CATEGORY
 Cases, Recipients, Children, Adults and Expenditures by Local District
 April 2001

Local District	One Person					Multi-Person				
	Cases	Recipients	Children	Adults	Expenditures	Cases	Recipients	Children	Adults	Expenditures
New York State	See Note	See Note	See Note	See Note	See Note	See Note	See Note	See Note	See Note	See Note
New York City	See Note	See Note	See Note	See Note	See Note	See Note	See Note	See Note	See Note	See Note
Rest of State	20,478	20,478	494	19,984	\$9,227,953	739	1,655	497	1,158	\$418,368
Albany	901	901	8	893	456,368	16	33	14	19	5,996
Allegany	94	94	1	93	28,221	4	9	3	6	1,142
Broome	343	343	13	330	143,314	18	37	13	24	7,837
Cattaraugus	150	150	0	150	59,479	9	21	5	16	3,759
Cayuga	67	67	0	67	27,796	1	2	0	2	181
Chautauqua	475	475	6	469	142,330	14	31	8	23	6,802
Chemung	141	141	7	134	50,995	7	14	10	4	3,002
Chenango	40	40	0	40	20,520	0	0	0	0	0
Clinton	167	167	4	163	70,549	5	10	1	9	1,376
Columbia	109	109	3	106	38,012	1	2	0	2	120
Cortland	89	89	3	86	36,575	4	8	2	6	1,417
Delaware	44	44	1	43	11,435	3	8	0	8	1,246
Dutchess	219	219	18	201	80,386	11	26	11	15	8,258
Erie	3,227	3,227	49	3,178	1,170,125	84	190	48	142	50,573
Essex	50	50	0	50	16,950	2	5	0	5	268
Franklin	65	65	1	64	20,784	0	0	0	0	0
Fulton	90	90	1	89	39,247	4	8	0	8	1,536
Genesee	67	67	3	64	24,855	1	2	2	0	452
Greene	90	90	1	89	28,710	1	2	0	2	298
Hamilton	8	8	0	8	2,553	1	2	1	1	422
Herkimer	69	69	3	66	19,818	0	0	0	0	0
Jefferson	244	244	1	243	89,498	10	21	1	20	4,636
Lewis	20	20	1	19	4,661	2	5	5	0	1,114
Livingston	155	155	4	151	57,821	10	20	2	18	2,993
Madison	38	38	5	33	14,045	2	4	4	0	1,078
Monroe	2,443	2,443	55	2,388	1,063,907	90	193	61	132	44,258
Montgomery	99	99	0	99	51,470	1	2	0	2	379
Nassau	952	952	18	934	436,454	38	82	17	65	18,330
Niagara	401	401	8	393	142,474	3	6	0	6	1,383
Oneida	420	420	17	403	140,502	32	68	23	45	13,162
Onondaga	1,374	1,374	56	1,318	492,190	51	122	47	75	23,454
Ontario	143	143	4	139	55,834	4	9	3	6	2,132
Orange	454	454	7	447	172,539	19	39	6	33	9,444
Orleans	113	113	2	111	45,268	4	8	2	6	1,459
Oswego	147	147	5	142	71,215	1	3	3	0	670
Otsego	29	29	1	28	12,682	1	3	0	3	511
Putnam	28	28	0	28	15,459	4	9	3	6	3,787
Rensselaer	190	190	0	190	104,828	5	11	6	5	3,848
Rockland	156	156	3	153	91,485	13	28	5	23	9,192
St.Lawrence	242	242	4	238	74,091	4	8	1	7	2,130
Saratoga	56	56	5	51	26,141	2	4	2	2	3,025
Schenectady	187	187	10	177	79,341	6	15	9	6	6,984
Schoharie	24	24	0	24	8,047	0	0	0	0	0
Schuyler	23	23	1	22	6,719	2	4	0	4	462
Seneca	37	37	3	34	12,308	1	2	1	1	107
Steuben	197	197	2	195	68,937	4	10	5	5	1,546
Suffolk	2,206	2,206	64	2,142	908,568	92	239	92	147	56,772
Sullivan	105	105	7	98	35,723	6	14	6	8	2,635
Tioga	44	44	1	43	18,390	2	4	0	4	233
Tompkins	139	139	7	132	67,017	7	17	10	7	2,492
Ulster	216	216	7	209	99,720	5	11	10	1	2,761
Warren	93	93	3	90	37,348	3	6	0	6	1,142
Washington	71	71	3	68	24,619	4	8	2	6	722
Wayne	132	132	11	121	47,500	9	20	6	14	5,488
Westchester	2,691	2,691	51	2,640	2,123,792	113	244	47	197	94,170
Wyoming	68	68	4	64	20,797	3	6	0	6	1,184
Yates	36	36	2	34	17,541	0	0	0	0	0

Note: A breakout of One-Person and Multi-Person cases is not available for New York City.

Table 14
SAFETY NET ASSISTANCE - FNP - NON-CASH TOTAL
Cases, Recipients, Children, Adults and Expenditures by Local District
April 2001

Local District	Safety Net Assistance - FNP - Non-Cash Total				
	Cases	Recipients	Children	Adults	Expenditures
New York State	21,638	22,129	593	21,536	See Note
New York City	14,282	14,629	369	14,260	See Note
Rest of State	7,356	7,500	224	7,276	\$3,622,689
Albany	2	2	0	2	621
Allegany	14	14	0	14	4,156
Broome	162	166	4	162	98,091
Cattaraugus	17	17	1	16	4,961
Cayuga	23	24	3	21	13,847
Chautauqua	99	99	0	99	36,226
Chemung	26	26	0	26	19,966
Chenango	8	9	2	7	4,513
Clinton	39	39	1	38	20,031
Columbia	12	13	2	11	6,648
Cortland	18	18	1	17	8,423
Delaware	10	10	0	10	4,562
Dutchess	206	209	21	188	112,131
Erie	1,195	1,212	6	1,206	412,515
Essex	11	11	1	10	2,158
Franklin	20	20	0	20	5,720
Fulton	34	35	1	34	14,921
Genesee	20	22	4	18	8,640
Greene	25	26	4	22	17,081
Hamilton	0	0	0	0	0
Herkimer	11	11	0	11	6,192
Jefferson	91	92	2	90	42,028
Lewis	11	11	0	11	2,979
Livingston	37	37	0	37	16,391
Madison	10	10	0	10	7,874
Monroe	2,097	2,147	42	2,105	1,054,680
Montgomery	8	8	0	8	1,806
Nassau	338	353	36	317	202,660
Niagara	311	314	3	311	134,144
Oneida	157	162	5	157	96,718
Onondaga	277	281	24	257	126,467
Ontario	60	61	1	60	39,598
Orange	261	267	15	252	166,740
Orleans	6	6	1	5	1,646
Oswego	36	36	0	36	18,455
Otsego	13	13	0	13	12,065
Putnam	24	25	5	20	14,822
Rensselaer	72	73	1	72	47,002
Rockland	219	224	0	224	130,870
St. Lawrence	40	40	0	40	23,656
Saratoga	13	13	1	12	7,646
Schenectady	68	69	0	69	39,504
Schoharie	4	4	0	4	2,298
Schuyler	8	9	1	8	3,287
Seneca	17	18	0	18	7,387
Steuben	56	56	0	56	27,846
Suffolk	498	504	27	477	191,446
Sullivan	58	63	4	59	27,810
Tioga	3	3	1	2	1,652
Tompkins	82	84	1	83	43,484
Ulster	88	89	1	88	54,442
Warren	14	14	0	14	15,308
Washington	9	9	2	7	3,158
Wayne	37	37	0	37	14,818
Westchester	375	379	0	379	237,072
Wyoming	5	5	0	5	3,241
Yates	1	1	0	1	286

Note: A breakout of Safety Net Assistance - FNP - Cash and Safety Net Assistance - FNP - Non-Cash expenditures is not available for New York City.

Table 15
SAFETY NET ASSISTANCE - FNP - NON-CASH BY CASE SIZE CATEGORY
Cases, Recipients, Children, Adults and Expenditures by Local District
April 2001

Local District	One Person					Multi-Person				
	Cases	Recipients	Children	Adults	Expenditures	Cases	Recipients	Children	Adults	Expenditures
New York State	See Note	See Note	See Note	See Note	See Note	See Note	See Note	See Note	See Note	See Note
New York City	See Note	See Note	See Note	See Note	See Note	See Note	See Note	See Note	See Note	See Note
Rest of State	7,246	7,246	111	7,135	\$3,555,256	110	254	113	141	\$67,433
Albany	2	2	0	2	621	0	0	0	0	0
Allegany	14	14	0	14	4,156	0	0	0	0	0
Broome	159	159	1	158	96,234	3	7	3	4	1,857
Cattaraugus	17	17	1	16	4,961	0	0	0	0	0
Cayuga	22	22	1	21	13,344	1	2	2	0	503
Chautauqua	99	99	0	99	36,226	0	0	0	0	0
Chemung	26	26	0	26	19,966	0	0	0	0	0
Chenango	7	7	0	7	4,248	1	2	2	0	265
Clinton	39	39	1	38	20,031	0	0	0	0	0
Columbia	11	11	0	11	6,007	1	2	2	0	641
Cortland	18	18	1	17	8,423	0	0	0	0	0
Delaware	10	10	0	10	4,562	0	0	0	0	0
Dutchess	203	203	16	187	110,066	3	6	5	1	2,065
Erie	1,181	1,181	0	1,181	406,632	14	31	6	25	5,883
Essex	11	11	1	10	2,158	0	0	0	0	0
Franklin	20	20	0	20	5,720	0	0	0	0	0
Fulton	33	33	0	33	14,571	1	2	1	1	350
Genesee	19	19	1	18	8,218	1	3	3	0	422
Greene	24	24	2	22	16,544	1	2	2	0	537
Hamilton	0	0	0	0	0	0	0	0	0	0
Herkimer	11	11	0	11	6,192	0	0	0	0	0
Jefferson	90	90	2	88	41,578	1	2	0	2	450
Lewis	11	11	0	11	2,979	0	0	0	0	0
Livingston	37	37	0	37	16,391	0	0	0	0	0
Madison	10	10	0	10	7,874	0	0	0	0	0
Monroe	2,064	2,064	3	2,061	1,029,279	33	83	39	44	25,401
Montgomery	8	8	0	8	1,806	0	0	0	0	0
Nassau	326	326	17	309	196,783	12	27	19	8	5,877
Niagara	309	309	1	308	133,280	2	5	2	3	864
Oneida	153	153	1	152	95,123	4	9	4	5	1,595
Onondaga	273	273	20	253	124,690	4	8	4	4	1,777
Ontario	59	59	0	59	38,722	1	2	1	1	876
Orange	258	258	12	246	165,507	3	9	3	6	1,233
Orleans	6	6	1	5	1,646	0	0	0	0	0
Oswego	36	36	0	36	18,455	0	0	0	0	0
Otsego	13	13	0	13	12,065	0	0	0	0	0
Putnam	23	23	4	19	14,530	1	2	1	1	292
Rensselaer	71	71	0	71	46,067	1	2	1	1	935
Rockland	214	214	0	214	128,647	5	10	0	10	2,223
St.Lawrence	40	40	0	40	23,656	0	0	0	0	0
Saratoga	13	13	1	12	7,646	0	0	0	0	0
Schenectady	67	67	0	67	39,060	1	2	0	2	444
Schoharie	4	4	0	4	2,298	0	0	0	0	0
Schuyler	7	7	0	7	2,985	1	2	1	1	302
Seneca	16	16	0	16	7,278	1	2	0	2	109
Steuben	56	56	0	56	27,846	0	0	0	0	0
Suffolk	492	492	19	473	188,443	6	12	8	4	3,003
Sullivan	57	57	0	57	25,361	1	6	4	2	2,449
Tioga	3	3	1	2	1,652	0	0	0	0	0
Tompkins	80	80	1	79	42,504	2	4	0	4	980
Ulster	87	87	1	86	53,919	1	2	0	2	523
Warren	14	14	0	14	15,308	0	0	0	0	0
Washington	9	9	2	7	3,158	0	0	0	0	0
Wayne	37	37	0	37	14,818	0	0	0	0	0
Westchester	371	371	0	371	231,495	4	8	0	8	5,577
Wyoming	5	5	0	5	3,241	0	0	0	0	0
Yates	1	1	0	1	286	0	0	0	0	0

Note: A breakout of One-Person and Multi-Person cases is not available for New York City.

Table 16
FOOD STAMPS
Households, Persons and Value of Food Stamps Benefits by Local District
April 2001

Local District	Total			Temporary Assistance			Non-Temporary Assistance		
	Households	Persons	Food Stamps Benefits	Households	Persons	Food Stamps Benefits	Households	Persons	Food Stamps Benefits
New York State	668,154	1,326,751	\$116,046,838	477,697	865,616	\$82,356,884	190,457	461,135	\$33,689,954
New York City	432,859	842,343	79,266,842	352,850	656,610	64,615,219	80,009	185,733	14,651,623
Rest of State	235,295	484,408	36,779,996	124,847	209,006	17,741,665	110,448	275,402	19,038,331
Albany	8,064	16,362	1,261,793	4,678	8,133	695,522	3,386	8,229	566,271
Allegany	1,743	3,553	250,989	848	1,360	107,036	895	2,193	143,953
Broome	5,327	10,327	775,066	2,881	4,630	396,679	2,446	5,697	378,387
Cattaraugus	2,707	5,360	370,777	1,130	1,592	129,867	1,577	3,768	240,910
Cayuga	1,937	4,155	306,004	744	1,081	86,143	1,193	3,074	219,861
Chautauqua	5,077	10,646	812,179	2,746	4,641	419,899	2,331	6,005	392,280
Chemung	2,373	4,967	359,514	1,225	1,955	162,958	1,148	3,012	196,556
Chenango	1,506	3,169	224,015	484	706	57,737	1,022	2,463	166,278
Clinton	2,826	5,343	388,309	1,300	1,637	128,823	1,526	3,706	259,486
Columbia	1,306	2,362	179,146	617	868	74,004	689	1,494	105,142
Cortland	1,320	2,697	200,296	627	970	78,534	693	1,727	121,762
Delaware	1,225	2,263	158,252	478	589	46,075	747	1,674	112,177
Dutchess	3,365	6,031	467,121	1,655	2,523	223,396	1,710	3,508	243,725
Erie	35,617	72,451	5,638,969	19,663	33,631	3,014,440	15,954	38,820	2,624,529
Essex	1,092	2,015	133,386	506	671	47,774	586	1,344	85,612
Franklin	1,519	3,091	214,704	652	844	62,919	867	2,247	151,785
Fulton	1,735	3,594	272,922	748	1,039	88,180	987	2,555	184,742
Genesee	1,110	2,237	157,224	493	714	58,980	617	1,523	98,244
Greene	1,246	2,463	189,551	596	895	80,514	650	1,568	109,037
Hamilton	145	211	11,133	27	31	2,331	118	180	8,802
Herkimer	1,776	3,695	261,216	650	892	68,198	1,126	2,803	193,018
Jefferson	3,418	7,511	544,787	1,591	2,474	199,151	1,827	5,037	345,636
Lewis	767	1,648	116,004	273	366	26,843	494	1,282	89,161
Livingston	1,542	2,881	212,846	720	1,109	100,745	822	1,772	112,101
Madison	1,377	2,774	207,932	537	633	47,853	840	2,141	160,079
Monroe	25,389	54,530	4,176,519	15,744	30,121	2,570,801	9,645	24,409	1,605,718
Montgomery	1,742	3,869	300,803	616	845	70,706	1,126	3,024	230,097
Nassau	9,554	16,856	1,320,814	6,035	9,490	806,864	3,519	7,366	513,950
Niagara	5,909	11,839	900,926	3,328	5,675	480,483	2,581	6,164	420,443
Oneida	8,632	18,341	1,375,423	3,893	6,329	531,531	4,739	12,012	843,892
Onondaga	12,301	27,269	2,115,225	6,581	12,229	1,038,210	5,720	15,040	1,077,015
Ontario	2,051	3,737	267,166	918	1,288	109,162	1,133	2,449	158,004
Orange	7,135	18,256	1,473,536	3,239	6,766	598,554	3,896	11,490	874,982
Orleans	1,218	2,692	204,107	601	1,089	96,567	617	1,603	107,540
Oswego	3,260	7,694	568,752	1,305	1,986	162,716	1,955	5,708	406,036
Otsego	1,156	2,099	144,331	424	465	33,394	732	1,634	110,937
Putnam	459	636	40,597	263	320	21,363	196	316	19,234
Rensselaer	3,599	7,324	571,908	1,697	2,647	228,038	1,902	4,677	343,870
Rockland	4,648	14,772	1,145,526	1,867	3,684	252,696	2,781	11,088	892,830
St. Lawrence	3,358	6,908	496,687	1,649	2,511	206,948	1,709	4,397	289,739
Saratoga	2,569	4,901	361,351	854	912	67,639	1,715	3,989	293,712
Schenectady	3,882	8,373	631,607	1,645	2,527	209,993	2,237	5,846	421,614
Schoharie	745	1,499	101,460	268	309	22,736	477	1,190	78,724
Schuyler	399	783	53,836	188	276	21,709	211	507	32,127
Seneca	800	1,480	99,662	313	447	34,812	487	1,033	64,850
Steuben	2,561	5,369	390,203	1,237	1,874	157,562	1,324	3,495	232,641
Suffolk	13,891	25,175	1,907,789	8,807	14,070	1,158,282	5,084	11,105	749,507
Sullivan	1,974	3,844	261,547	944	1,333	105,270	1,030	2,511	156,277
Tioga	921	1,988	139,890	428	648	53,283	493	1,340	86,607
Tompkins	1,821	3,455	248,040	957	1,476	115,452	864	1,979	132,588
Ulster	3,453	6,206	448,433	1,858	2,778	224,663	1,595	3,428	223,770
Warren	1,553	2,921	219,265	757	1,102	88,539	796	1,819	130,726
Washington	1,487	2,902	206,066	628	830	64,844	859	2,072	141,222
Wayne	2,084	3,692	263,744	931	1,224	102,098	1,153	2,468	161,646
Westchester	15,216	30,558	2,443,107	10,446	19,041	1,639,155	4,770	11,517	803,952
Wyoming	715	1,386	100,894	309	423	36,740	406	963	64,154
Yates	693	1,248	86,647	248	307	26,254	445	941	60,393

Note: Food Stamps households containing only SSI recipients are counted as TA in accordance with Federal reporting requirements.

Note: Rest of State data does not include the following FAP data: 72 households, 85 persons, and \$8,119 in expenditures.

Table 17
SUPPLEMENTAL SECURITY INCOME
 Recipients, Total Program Expenditures, Federal and State Shares, by Local District
 April 2001

Local District	Expenditures			
	Recipients	Total	Federal	State
New York State*	618,620	\$283,074,788	\$235,345,006	\$47,729,782
New York City	392,506	185,793,576	158,057,085	27,736,491
Rest of State	215,634	93,688,494	74,956,309	18,732,185
Albany	6,275	2,744,965	2,179,318	565,647
Allegany	1,456	637,929	515,840	122,089
Broome	4,946	2,184,940	1,809,091	375,849
Cattaraugus	2,317	981,845	797,224	184,621
Cayuga	1,693	739,308	565,448	173,860
Chautauqua	3,807	1,643,342	1,335,545	307,797
Chemung	2,716	1,180,546	974,002	206,544
Chenango	1,309	500,371	419,720	80,651
Clinton	2,457	1,037,682	844,187	193,495
Columbia	1,502	641,184	488,131	153,053
Cortland	1,194	521,472	419,936	101,536
Delaware	1,148	450,091	358,202	91,889
Dutchess	4,260	1,794,628	1,349,862	444,766
Erie	24,855	11,115,675	9,086,593	2,029,082
Essex	933	391,043	285,561	105,482
Franklin	1,569	643,331	512,788	130,543
Fulton	1,618	677,985	534,096	143,889
Genesee	961	357,745	279,761	77,984
Greene	1,050	435,723	346,711	89,012
Hamilton	79	27,434	22,842	4,592
Herkimer	1,517	610,395	491,551	118,844
Jefferson	2,810	1,254,135	1,026,423	227,712
Lewis	639	272,785	224,425	48,360
Livingston	907	387,886	323,820	64,066
Madison	1,205	474,970	367,791	107,179
Monroe	17,265	8,052,554	6,577,897	1,474,657
Montgomery	1,278	528,421	423,548	104,873
Nassau	16,643	7,090,669	5,507,715	1,582,954
Niagara	4,737	2,168,958	1,746,602	422,356
Oneida	7,002	3,021,340	2,471,746	549,594
Onondaga	10,992	4,918,803	4,105,427	813,376
Ontario	1,508	663,042	529,518	133,524
Orange	5,857	2,523,012	2,048,668	474,344
Orleans	894	353,180	292,866	60,314
Oswego	2,847	1,185,638	997,647	187,991
Otsego	1,277	508,094	386,015	122,079
Putnam	731	306,532	220,786	85,746
Rensselaer	3,039	1,290,805	1,024,780	266,025
Rockland	4,382	1,894,988	1,367,445	527,543
St.Lawrence	3,553	1,504,718	1,252,380	252,338
Saratoga	2,463	980,844	776,128	204,716
Schenectady	3,658	1,564,248	1,259,771	304,477
Schoharie	698	274,303	200,221	74,082
Schuyler	496	194,542	149,944	44,598
Seneca	694	285,236	229,554	55,682
Steuben	2,839	1,267,830	1,049,648	218,182
Suffolk	20,609	8,937,701	6,838,491	2,099,210
Sullivan	2,497	1,076,605	792,937	283,668
Tioga	968	411,547	349,753	61,794
Tompkins	1,455	622,073	487,970	134,103
Ulster	3,960	1,708,600	1,363,246	345,354
Warren	1,426	564,620	456,237	108,383
Washington	1,389	557,487	447,736	109,751
Wayne	1,781	777,782	629,814	147,968
Westchester	14,401	6,328,155	5,081,356	1,246,799
Wyoming	612	238,696	190,944	47,752
Yates	460	180,061	140,651	39,410
Mental Hygiene	10,480	3,592,718	2,331,612	1,261,106

* Only NYS includes Mental Hygiene

Table 18
SUPPLEMENTAL SECURITY INCOME
 SSI Recipients by Living Arrangement and Location
 April 2001

Living Arrangement	New York State	New York City	Rest of State	Mental Hygiene
Living Alone	321,432	220,478	100,902	52
Living With Others	209,419	131,617	77,772	30
Living in Household of Another	24,333	15,387	8,942	4
Congregate Care Level I	5,956	607	498	4,851
Congregate Care Level II	36,350	14,124	21,718	508
Congregate Care Level III	238	70	168	0
Title XIX Institution	20,892	10,223	5,634	5,035
Total	618,620	392,506	215,634	10,480

Table 19
SUPPLEMENTAL SECURITY INCOME
 SSI Recipients by Living Arrangement and Category of Assistance
 April 2001

Living Arrangement	Total	Category of Assistance		
		Aged	Blind	Disabled
Living Alone	321,432	101,301	1,710	218,421
Living With Others	209,419	17,493	1,127	190,799
Living in Household of Another	24,333	10,198	154	13,981
Congregate Care Level I	5,956	336	30	5,590
Congregate Care Level II	36,350	5,338	182	30,830
Congregate Care Level III	238	0	1	237
Title XIX Institution	20,892	3,483	122	17,287
Total	618,620	138,149	3,326	477,145

Table 20
CHILD SUPPORT COLLECTIONS (IV-D)
April 2001

Local District	Total	Current Assistance	Former Assistance	Never Assistance
New York State	\$102,670,623	\$12,352,057	\$39,486,776	\$50,831,790
New York City	38,595,488	7,686,354	15,452,594	15,456,540
Rest of State	64,075,135	4,665,703	24,034,182	35,375,250
Albany	1,843,309	108,501	595,300	1,139,508
Allegany	416,371	45,840	233,625	136,906
Broome	1,183,616	72,606	478,402	632,608
Cattaraugus	709,793	50,142	387,685	271,966
Cayuga	588,306	16,417	215,162	356,727
Chautauqua	1,166,878	128,529	678,667	359,682
Chemung	802,567	51,250	329,075	422,242
Chenango	415,585	22,683	136,122	256,780
Clinton	627,970	24,590	296,189	307,191
Columbia	379,596	16,304	149,963	213,329
Cortland	369,272	19,872	149,107	200,293
Delaware	341,366	12,153	124,049	205,164
Dutchess	1,741,027	92,672	485,947	1,162,408
Erie	4,593,559	468,179	2,397,769	1,727,611
Essex	280,652	10,416	162,794	107,442
Franklin	444,063	13,583	217,508	212,972
Fulton	474,978	24,728	200,488	249,762
Genesee	402,822	20,981	145,938	235,903
Greene	351,283	18,039	130,048	203,196
Hamilton	29,645	-508	14,634	15,519
Herkimer	540,805	27,335	241,051	272,419
Jefferson	888,287	54,091	360,160	474,036
Lewis	208,658	6,602	78,555	123,501
Livingston	517,043	25,063	187,301	304,679
Madison	422,026	16,304	175,477	230,245
Monroe	4,414,515	621,828	1,906,008	1,886,679
Montgomery	400,895	23,093	183,224	194,578
Nassau	5,397,460	274,998	1,302,549	3,819,913
Niagara	1,464,832	138,204	787,542	539,086
Oneida	1,210,627	125,684	589,592	495,351
Onondaga	3,100,444	220,083	1,465,104	1,415,257
Ontario	766,162	40,169	267,597	458,396
Orange	2,121,815	155,396	607,826	1,358,593
Orleans	274,670	20,969	140,436	113,265
Oswego	981,157	51,075	482,668	447,414
Otsego	363,508	12,960	103,769	246,779
Putnam	420,045	4,234	74,299	341,512
Rensselaer	1,126,915	54,099	417,455	655,361
Rockland	1,477,460	80,366	429,420	967,674
St. Lawrence	764,692	47,407	389,660	327,625
Saratoga	1,233,248	19,112	238,362	975,774
Schenectady	1,048,578	52,713	314,335	681,530
Schoharie	247,986	14,865	91,229	141,892
Schuyler	125,719	7,238	44,380	74,101
Seneca	262,582	10,282	81,421	170,879
Steuben	720,268	43,642	367,369	309,257
Suffolk	7,902,954	550,472	2,307,492	5,044,990
Sullivan	468,052	37,618	179,682	250,752
Tioga	399,646	27,551	186,081	186,014
Tompkins	489,863	29,036	214,250	246,577
Ulster	1,023,228	58,657	331,206	633,365
Warren	597,465	19,302	197,999	380,164
Washington	514,697	25,688	178,702	310,307
Wayne	723,923	25,801	239,319	458,803
Westchester	3,823,666	504,196	1,152,309	2,167,161
Wyoming	300,419	16,049	122,531	161,839
Yates	168,167	6,544	69,350	92,273

Note: Effective February 1999, collection amounts include collections made on behalf of other states.