



NEW YORK STATE
OFFICE OF TEMPORARY AND DISABILITY ASSISTANCE
40 North Pearl Street, Albany, New York 12243-0001

George E. Pataki
Governor

Brian J. Wing
Commissioner

Temporary and Disability Assistance Statistics January 2002

Temporary Assistance

In January 2002, Temporary Assistance recipients totaled 656,067, increasing by 787 over December 2001. Temporary Assistance expenditures totaled \$145,674,607 in January 2002, increasing \$5.7 million (+4.1%) over the previous month.

Food Stamps

Recipients of Food Stamps numbered 1,319,574 in January 2002, increasing 9,646 (+0.7%) over the previous month. Food Stamps expenditures totaled \$124,554,107 in January 2002, increasing \$745,083 (+0.6%) over December 2001.

Supplemental Security Income

For January 2002, SSI recipients totaled 624,564 (including Mental Hygiene), decreasing by 675 from December 2001. SSI expenditures totaled \$289,862,637 in January 2002, increasing \$5.9 million (+2.1%) over the previous month.

Table of Contents

Page Number

60-Month Limit Notice.....	3
Graphs.....	5
Summary Tables.....	6
Temporary Assistance by Program Area.....	7
Temporary Assistance by Funding Source.....	11
Other Programs.....	19

NOTICE

Changes in Caseload Trends and Reporting Tables Related to Cases Reaching The 60-Month Time Limit

Caseload Trends

December 2001 and January 2002 were the first months where TANF (Family Assistance and Safety Net - FP) cases in New York State exhausted their 60-month limit on federally funded cash assistance. As a result, a significant number of cases transferred from federally funded assistance categories to those financed entirely by the State and its localities, especially in December. While these transfers will not affect the trend in overall Temporary Assistance recipient and case counts, significant shifts from the previous month will occur within the various case types, primarily through a movement of cases from Family Assistance to the Safety Net - FNP categories. Such transfers will continue to occur in subsequent months as more TANF cases reach the 60-month limit. However, based on our observations regarding the number of cases approaching the time limit, the maximum number of these transfers will be substantially smaller in the coming months, and is expected to rapidly diminish to a constant and relatively low level. Interpretation of caseload trends should be made with this information in mind.

Changes In Reporting Tables

To accommodate changes related to cases reaching the time limit, we have revised the structure of Tables 11, 13, and 15 of this report to provide more useful information regarding persons exceeding the 60-month time limit. Previously, these tables reported cases, recipients, children, adults and expenditures for all Safety Net - FNP Assistance (Table 11), and the two subcategories of Safety Net - FNP Assistance, Safety Net - FNP-Cash (Table 13) and Safety Net - FNP - Non-Cash (Table 15), and divided each of these tables into one-person and multi-person cases. Before the onset of TANF, these tables were used to distinguish two groups subject to different policies: single adult cases and cases consisting of families with children. At that time, many families were served under the previous Home Relief program, since under the former AFDC program, most two-parent family cases were not eligible for federal assistance. With the onset of TANF, two-parent families become eligible for federal assistance and moved predominantly into the Family Assistance case type, thus eroding the usefulness of the one-person/multi-person distinction in these tables.

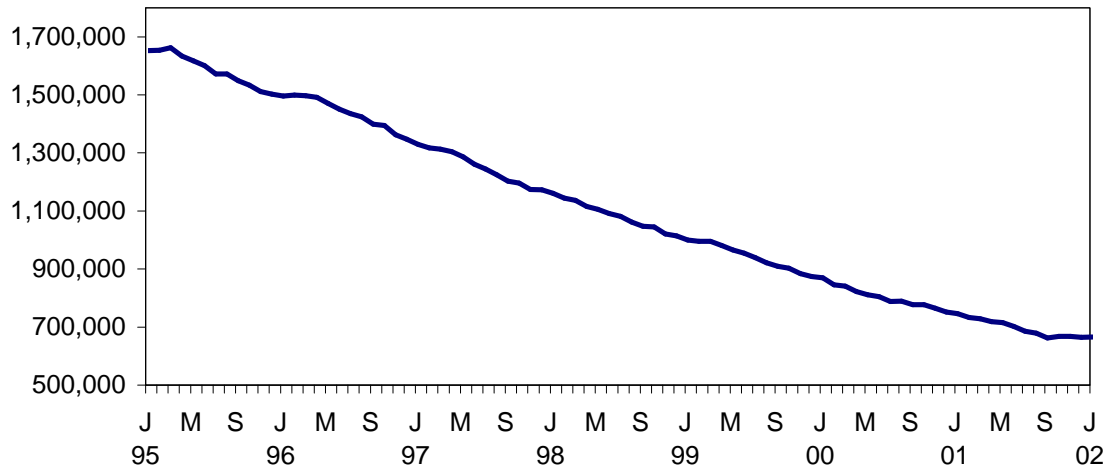
NOTICE

Changes in Caseload Trends and Reporting Tables Related to Cases Reaching The 60-Month Time Limit (Cont'd.)

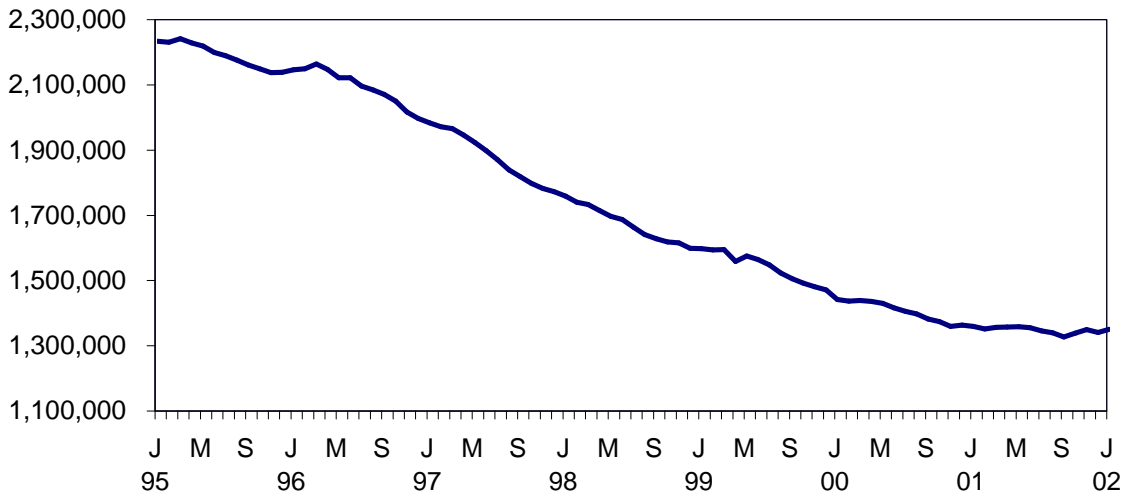
For this report, and those to follow, Tables 11, 13, and 15 will be divided not by case size, but by whether or not the expenditures for the case count toward the State's maintenance of effort (MOE) requirement for drawing down federal TANF dollars. For the most part, the MOE cases are those where an adult on the case has exceeded the 60-month limit on federal assistance and then transferred to the Safety Net - FNP category. By dividing the tables in this way, trends in MOE expenditures will be easier to track. Also, because the MOE classification will contain most of the family (adults with children) cases in the Safety Net - FNP categories, and the non-MOE cases will be predominantly childless singles or couples, observers will be able to separately track categories of cases that are distinct in terms of the policies applied to them.

NEW YORK STATE JANUARY 1995 - JANUARY 2002

TEMPORARY ASSISTANCE RECIPIENTS

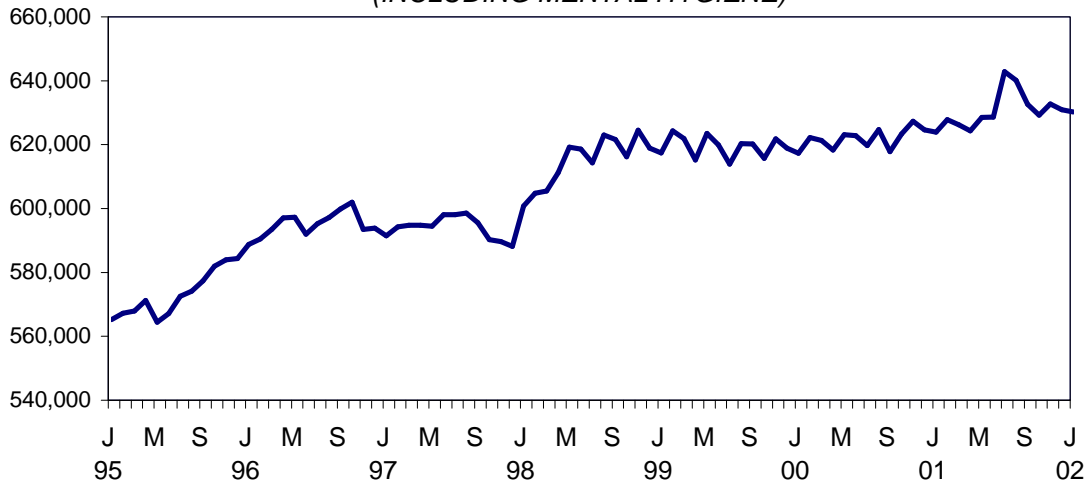


FOOD STAMPS PERSONS



SSI PERSONS

(INCLUDING MENTAL HYGIENE)



SELECTED SUMMARY PROGRAM DATA
BY REGION

Table 1
TEMPORARY AND DISABILITY ASSISTANCE CASES
January 2002
(See NOTICE, page 3)

Region	Cases				
	Temporary Assistance by Program			Supplemental Security Income	Food Stamps
	Total	Family Assistance	Safety Net Assistance		
New York State	311,926	168,403	143,523	614,532	665,795
New York City	219,926	112,702	107,224	397,049	415,846
Rest of State	92,000	55,701	36,299	217,483	249,949

Table 2
TEMPORARY AND DISABILITY ASSISTANCE RECIPIENTS
January 2002
(See NOTICE, page 3)

Region	Recipients				
	Temporary Assistance by Program			Supplemental Security Income	Food Stamps
	Total	Family Assistance	Safety Net Assistance		
New York State	656,067	414,687	241,380	614,532	1,319,574
New York City	458,514	272,605	185,909	397,049	798,396
Rest of State	197,553	142,082	55,471	217,483	521,178

Table 3
TEMPORARY AND DISABILITY ASSISTANCE EXPENDITURES
January 2002
(See NOTICE, page 3)

Region	Expenditures				
	Temporary Assistance by Program			Supplemental Security Income	Food Stamps
	Total	Family Assistance	Safety Net Assistance		
New York State	\$145,674,607	\$88,624,064	\$57,050,543	\$286,374,382	\$124,554,107
New York City	96,152,000	56,805,000	39,347,000	191,725,246	82,644,581
Rest of State	49,522,607	31,819,064	17,703,543	94,649,136	41,909,526

Note: SSI data listed here do not include Mental Hygiene data. See Tables 17 - 19 for total SSI data.

Table 4
TEMPORARY ASSISTANCE
 Year to Year Monthly Comparison by Local District
 Cases, Recipients and Expenditures
 January 2002

Local District	January 2002			January 2001			January 2000		
	Cases	Recipients	Expenditures	Cases	Recipients	Expenditures	Cases	Recipients	Expenditures
New York State	311,926	656,067	\$145,674,607	344,210	736,613	\$156,721,985	393,315	860,985	\$ 171,837,924
New York City*	219,926	458,514	96,152,000	251,480	532,751	107,085,000	286,694	622,128	118,457,000
Rest of State	92,000	197,553	49,522,607	92,730	203,862	49,636,985	106,621	238,857	53,380,924
Albany	3,562	7,518	1,982,648	3,294	7,399	1,827,142	3,411	7,841	1,826,196
Allegany	488	1,090	187,531	511	1,155	197,850	629	1,486	238,176
Broome	2,017	4,259	961,675	1,975	4,316	869,160	2,395	5,519	1,023,502
Cattaraugus	653	1,363	254,254	612	1,310	237,468	710	1,516	274,307
Cayuga	432	928	193,323	411	908	180,881	446	1,000	195,235
Chautauqua	2,233	4,835	929,682	1,988	4,317	913,412	2,229	4,993	949,024
Chemung	910	2,038	370,733	798	1,851	307,068	966	2,239	384,080
Chenango	225	458	94,193	227	519	94,290	277	621	105,816
Clinton	622	1,184	284,932	568	1,083	260,145	572	1,110	227,801
Columbia	372	688	163,515	372	742	146,583	396	811	169,591
Cortland	456	973	218,572	402	895	172,741	424	969	221,379
Delaware	184	324	68,874	189	363	76,076	232	436	105,435
Dutchess	1,238	2,373	640,601	1,288	2,588	689,726	1,475	3,065	723,295
Erie	12,777	28,358	5,409,242	14,850	33,261	7,016,050	17,763	39,924	7,267,511
Essex	189	393	75,550	219	427	97,803	246	497	92,443
Franklin	295	559	101,634	303	607	126,882	371	725	143,720
Fulton	401	745	188,025	376	704	167,414	437	921	173,540
Genesee	289	601	145,181	267	580	112,368	287	645	135,065
Greene	422	832	186,916	406	830	188,146	404	871	168,510
Hamilton	14	21	4,388	10	18	4,549	13	20	4,362
Herkimer	338	711	142,990	324	656	143,070	379	859	140,321
Jefferson	1,017	2,133	453,935	1,074	2,197	481,366	1,245	2,649	532,081
Lewis	121	249	48,460	127	258	52,205	162	349	52,956
Livingston	604	1,140	282,383	496	987	246,597	478	991	212,848
Madison	159	287	68,143	175	330	78,599	180	334	72,741
Monroe	14,520	33,161	7,227,324	14,470	33,113	7,265,472	17,304	40,082	9,282,611
Montgomery	308	679	130,249	293	593	156,581	296	655	123,811
Nassau	4,333	8,548	2,564,803	4,530	9,246	2,440,362	5,207	10,778	2,638,810
Niagara	2,462	5,376	1,011,227	2,521	5,183	1,119,281	2,899	5,988	1,161,188
Oneida	2,333	5,616	1,122,064	2,364	5,911	1,202,816	2,760	7,044	1,215,478
Onondaga	6,259	13,683	2,698,887	5,782	13,118	2,706,449	6,161	14,382	2,721,282
Ontario	640	1,177	399,695	564	1,064	254,159	539	1,052	220,701
Orange	2,736	6,682	1,629,859	2,904	7,675	1,684,054	3,059	7,926	1,693,583
Orleans	516	1,140	229,331	458	1,063	198,560	470	1,110	211,228
Oswego	813	1,668	418,012	790	1,815	363,996	934	2,197	411,153
Otsego	123	213	57,481	103	179	48,896	123	224	52,912
Putnam	123	201	82,447	97	172	46,553	113	189	62,723
Rensselaer	1,359	2,887	639,536	1,182	2,545	583,426	1,261	2,771	554,844
Rockland	1,168	3,107	700,273	1,184	3,460	764,286	1,336	3,787	732,170
St.Lawrence	1,027	1,992	418,422	1,054	2,158	401,997	1,253	2,663	489,904
Saratoga	268	417	124,455	240	382	118,364	288	471	136,884
Schenectady	1,037	2,132	516,559	991	2,220	501,860	1,156	2,683	500,035
Schoharie	100	191	53,270	86	141	38,801	101	188	49,592
Schuyler	133	287	60,572	118	240	47,216	102	213	46,342
Seneca	159	325	68,751	186	377	77,745	171	355	71,272
Steuben	842	1,616	324,527	784	1,617	313,613	1,082	2,335	426,889
Suffolk	7,300	14,786	6,394,436	7,154	14,658	5,141,464	7,871	16,818	5,047,771
Sullivan	567	1,207	263,235	555	1,084	292,793	556	1,242	216,344
Tioga	315	654	134,347	280	584	106,772	331	743	146,637
Tompkins	664	1,234	333,490	632	1,256	302,318	730	1,406	424,884
Ulster	1,247	2,500	710,644	1,232	2,524	654,526	1,421	2,801	692,359
Warren	262	463	119,083	258	528	130,432	240	459	104,126
Washington	346	571	169,693	322	583	165,901	364	699	174,253
Wayne	480	868	214,017	463	903	211,189	582	1,291	254,425
Westchester	9,253	19,615	7,140,368	9,588	20,647	7,501,587	11,495	25,339	7,967,532
Wyoming	186	325	70,729	193	353	72,599	183	362	68,026
Yates	103	172	37,441	90	169	35,326	106	213	41,220

* Expenditures partially estimated.

Table 5
TEMPORARY ASSISTANCE
Cases, Recipients, Children, Adults and Expenditures by Local District
January 2002

Local District	Temporary Assistance				
	Cases	Recipients	Children	Adults	Expenditures
New York State	311,926	656,067	385,238	270,829	\$145,674,607
New York City*	219,926	458,514	263,946	194,568	96,152,000
Rest of State	92,000	197,553	121,292	76,261	49,522,607
Albany	3,562	7,518	4,442	3,076	1,982,648
Allegany	488	1,090	660	430	187,531
Broome	2,017	4,259	2,621	1,638	961,675
Cattaraugus	653	1,363	817	546	254,254
Cayuga	432	928	596	332	193,323
Chautauqua	2,233	4,835	2,858	1,977	929,682
Chemung	910	2,038	1,310	728	370,733
Chenango	225	458	299	159	94,193
Clinton	622	1,184	682	502	284,932
Columbia	372	688	407	281	163,515
Cortland	456	973	554	419	218,572
Delaware	184	324	203	121	68,874
Dutchess	1,238	2,373	1,530	843	640,601
Erie	12,777	28,358	17,509	10,849	5,409,242
Essex	189	393	221	172	75,550
Franklin	295	559	337	222	101,634
Fulton	401	745	416	329	188,025
Genesee	289	601	367	234	145,181
Greene	422	832	460	372	186,916
Hamilton	14	21	8	13	4,388
Herkimer	338	711	455	256	142,990
Jefferson	1,017	2,133	1,183	950	453,935
Lewis	121	249	156	93	48,460
Livingston	604	1,140	561	579	282,383
Madison	159	287	210	77	68,143
Monroe	14,520	33,161	20,926	12,235	7,227,324
Montgomery	308	679	410	269	130,249
Nassau	4,333	8,548	5,426	3,122	2,564,803
Niagara	2,462	5,376	3,251	2,125	1,011,227
Oneida	2,333	5,616	3,597	2,019	1,122,064
Onondaga	6,259	13,683	8,548	5,135	2,698,887
Ontario	640	1,177	642	535	399,695
Orange	2,736	6,682	4,470	2,212	1,629,859
Orleans	516	1,140	659	481	229,331
Oswego	813	1,668	1,049	619	418,012
Otsego	123	213	137	76	57,481
Putnam	123	201	107	94	82,447
Rensselaer	1,359	2,887	1,711	1,176	639,536
Rockland	1,168	3,107	2,062	1,045	700,273
St.Lawrence	1,027	1,992	1,116	876	418,422
Saratoga	268	417	299	118	124,455
Schenectady	1,037	2,132	1,444	688	516,559
Schoharie	100	191	125	66	53,270
Schuyler	133	287	172	115	60,572
Seneca	159	325	200	125	68,751
Steuben	842	1,616	905	711	324,527
Suffolk	7,300	14,786	8,880	5,906	6,394,436
Sullivan	567	1,207	780	427	263,235
Tioga	315	654	400	254	134,347
Tompkins	664	1,234	666	568	333,490
Ulster	1,247	2,500	1,606	894	710,644
Warren	262	463	251	212	119,083
Washington	346	571	320	251	169,693
Wayne	480	868	523	345	214,017
Westchester	9,253	19,615	11,486	8,129	7,140,368
Wyoming	186	325	173	152	70,729
Yates	103	172	89	83	37,441

* Expenditures partially estimated.

Table 6
FAMILY ASSISTANCE
Cases, Recipients, Children, Adults and Expenditures by Local District
January 2002
(See NOTICE, page 3)

Local District	Family Assistance				
	Cases	Recipients	Children	Adults	Expenditures
New York State	168,403	414,687	294,543	120,144	\$88,624,064
New York City*	112,702	272,605	192,103	80,502	56,805,000
Rest of State	55,701	142,082	102,440	39,642	31,819,064
Albany	2,306	5,889	4,081	1,808	1,293,724
Allegany	340	853	582	271	138,717
Broome	1,289	3,220	2,316	904	621,789
Cattaraugus	422	1,062	759	303	169,601
Cayuga	320	768	551	217	145,347
Chautauqua	1,467	3,756	2,547	1,209	677,908
Chemung	669	1,715	1,226	489	271,511
Chenango	168	390	289	101	68,389
Clinton	377	888	631	257	166,246
Columbia	242	531	381	150	110,822
Cortland	300	782	517	265	149,357
Delaware	115	244	192	52	42,604
Dutchess	786	1,795	1,376	419	437,178
Erie	7,550	19,794	14,302	5,492	3,320,260
Essex	128	312	202	110	55,320
Franklin	207	437	306	131	75,411
Fulton	268	599	410	189	108,762
Genesee	176	469	343	126	90,194
Greene	270	654	434	220	125,541
Hamilton	7	14	8	6	2,536
Herkimer	254	613	434	179	119,050
Jefferson	596	1,568	1,050	518	276,042
Lewis	84	200	143	57	33,167
Livingston	351	835	512	323	164,096
Madison	123	250	204	46	53,680
Monroe	8,046	21,869	16,082	5,787	4,207,522
Montgomery	199	568	409	159	82,648
Nassau	2,648	6,109	4,672	1,437	1,696,252
Niagara	1,547	3,869	2,664	1,205	628,720
Oneida	1,529	4,370	3,166	1,204	776,790
Onondaga	4,083	10,800	7,795	3,005	1,895,724
Ontario	355	811	562	249	195,168
Orange	1,844	4,975	3,688	1,287	1,152,410
Orleans	338	885	584	301	161,032
Oswego	590	1,395	1,000	395	307,363
Otsego	73	153	128	25	30,564
Putnam	61	135	100	35	36,602
Rensselaer	925	2,350	1,616	734	435,054
Rockland	613	1,784	1,386	398	382,247
St.Lawrence	660	1,486	977	509	283,143
Saratoga	173	313	280	33	77,049
Schenectady	724	1,682	1,299	383	362,146
Schoharie	67	156	122	34	31,875
Schuyler	93	243	170	73	45,940
Seneca	100	235	165	70	41,883
Steuben	494	1,195	833	362	194,884
Suffolk	3,813	9,814	7,375	2,439	4,361,304
Sullivan	413	1,028	754	274	197,045
Tioga	236	546	374	172	104,242
Tompkins	384	896	610	286	179,910
Ulster	881	2,003	1,464	539	530,658
Warren	152	335	235	100	68,118
Washington	202	402	289	113	88,951
Wayne	282	647	493	154	129,180
Westchester	5,191	13,020	9,101	3,919	4,347,104
Wyoming	116	249	166	83	48,032
Yates	54	121	85	36	22,252

* Expenditures partially estimated.

Table 7
SAFETY NET ASSISTANCE
Cases, Recipients, Children, Adults and Expenditures by Local District
January 2002
(See NOTICE, page 3)

Local District	Safety Net Assistance				
	Cases	Recipients	Children	Adults	Expenditures
New York State	143,523	241,380	90,695	150,685	\$57,050,543
New York City*	107,224	185,909	71,843	114,066	39,347,000
Rest of State	36,299	55,471	18,852	36,619	17,703,543
Albany	1,256	1,629	361	1,268	688,924
Allegany	148	237	78	159	48,814
Broome	728	1,039	305	734	339,886
Cattaraugus	231	301	58	243	84,653
Cayuga	112	160	45	115	47,976
Chautauqua	766	1,079	311	768	251,774
Chemung	241	323	84	239	99,222
Chenango	57	68	10	58	25,804
Clinton	245	296	51	245	118,686
Columbia	130	157	26	131	52,693
Cortland	156	191	37	154	69,215
Delaware	69	80	11	69	26,270
Dutchess	452	578	154	424	203,423
Erie	5,227	8,564	3,207	5,357	2,088,982
Essex	61	81	19	62	20,230
Franklin	88	122	31	91	26,223
Fulton	133	146	6	140	79,263
Genesee	113	132	24	108	54,987
Greene	152	178	26	152	61,375
Hamilton	7	7	0	7	1,852
Herkimer	84	98	21	77	23,940
Jefferson	421	565	133	432	177,893
Lewis	37	49	13	36	15,293
Livingston	253	305	49	256	118,287
Madison	36	37	6	31	14,463
Monroe	6,474	11,292	4,844	6,448	3,019,802
Montgomery	109	111	1	110	47,601
Nassau	1,685	2,439	754	1,685	868,551
Niagara	915	1,507	587	920	382,507
Oneida	804	1,246	431	815	345,274
Onondaga	2,176	2,883	753	2,130	803,163
Ontario	285	366	80	286	204,527
Orange	892	1,707	782	925	477,449
Orleans	178	255	75	180	68,299
Oswego	223	273	49	224	110,649
Otsego	50	60	9	51	26,917
Putnam	62	66	7	59	45,845
Rensselaer	434	537	95	442	204,482
Rockland	555	1,323	676	647	318,026
St.Lawrence	367	506	139	367	135,279
Saratoga	95	104	19	85	47,406
Schenectady	313	450	145	305	154,413
Schoharie	33	35	3	32	21,395
Schuyler	40	44	2	42	14,632
Seneca	59	90	35	55	26,868
Steuben	348	421	72	349	129,643
Suffolk	3,487	4,972	1,505	3,467	2,033,132
Sullivan	154	179	26	153	66,190
Tioga	79	108	26	82	30,105
Tompkins	280	338	56	282	153,580
Ulster	366	497	142	355	179,986
Warren	110	128	16	112	50,965
Washington	144	169	31	138	80,742
Wayne	198	221	30	191	84,837
Westchester	4,062	6,595	2,385	4,210	2,793,264
Wyoming	70	76	7	69	22,697
Yates	49	51	4	47	15,189

* Expenditures partially estimated.

Table 8
TEMPORARY ASSISTANCE BY FUNDING SOURCE
 Cases, Recipients and Expenditures by Local District
 January 2002
 (See NOTICE, page 3)

Local District	Total			Federally Participating - TANF Family Assistance and Safety Net - FP			Federally Non-Participating Safety Net Assistance - FNP		
	Cases	Recipients	Expenditures	Cases	Recipients	Expenditures	Cases	Recipients	Expenditures
New York State	311,926	656,067	\$145,674,607	170,003	418,889	\$89,588,814	141,923	237,178	\$56,085,793
New York City*	219,926	458,514	96,152,000	112,836	272,908	56,843,000	107,090	185,606	39,309,000
Rest of State	92,000	197,553	49,522,607	57,167	145,981	32,745,814	34,833	51,572	16,776,793
Albany	3,562	7,518	1,982,648	2,331	5,954	1,306,009	1,231	1,564	676,639
Allegany	488	1,090	187,531	340	853	138,717	148	237	48,814
Broome	2,017	4,259	961,675	1,326	3,311	637,694	691	948	323,981
Cattaraugus	653	1,363	254,254	432	1,091	172,806	221	272	81,448
Cayuga	432	928	193,323	330	789	148,975	102	139	44,348
Chautauqua	2,233	4,835	929,682	1,496	3,825	687,438	737	1,010	242,244
Chemung	910	2,038	370,733	673	1,726	272,831	237	312	97,902
Chenango	225	458	94,193	168	390	68,389	57	68	25,804
Clinton	622	1,184	284,932	386	907	170,509	236	277	114,423
Columbia	372	688	163,515	242	531	110,822	130	157	52,693
Cortland	456	973	218,572	306	797	151,977	150	176	66,595
Delaware	184	324	68,874	116	245	43,554	68	79	25,320
Dutchess	1,238	2,373	640,601	817	1,845	452,730	421	528	187,871
Erie	12,777	28,358	5,409,242	7,819	20,522	3,445,658	4,958	7,836	1,963,584
Essex	189	393	75,550	132	323	56,879	57	70	18,671
Franklin	295	559	101,634	209	442	76,436	86	117	25,198
Fulton	401	745	188,025	270	605	109,666	131	140	78,359
Genesee	289	601	145,181	181	482	94,037	108	119	51,144
Greene	422	832	186,916	271	655	125,875	151	177	61,041
Hamilton	14	21	4,388	7	14	2,536	7	7	1,852
Herkimer	338	711	142,990	255	617	119,284	83	94	23,706
Jefferson	1,017	2,133	453,935	608	1,608	281,321	409	525	172,614
Lewis	121	249	48,460	84	200	33,167	37	49	15,293
Livingston	604	1,140	282,383	367	875	172,820	237	265	109,563
Madison	159	287	68,143	123	250	53,680	36	37	14,463
Monroe	14,520	33,161	7,227,324	8,557	23,260	4,497,302	5,963	9,901	2,730,022
Montgomery	308	679	130,249	199	568	82,648	109	111	47,601
Nassau	4,333	8,548	2,564,803	2,682	6,195	1,717,780	1,651	2,353	847,023
Niagara	2,462	5,376	1,011,227	1,595	4,010	649,520	867	1,366	361,707
Oneida	2,333	5,616	1,122,064	1,562	4,463	795,689	771	1,153	326,375
Onondaga	6,259	13,683	2,698,887	4,104	10,855	1,905,515	2,155	2,828	793,372
Ontario	640	1,177	399,695	361	832	202,776	279	345	196,919
Orange	2,736	6,682	1,629,859	1,869	5,042	1,170,327	867	1,640	459,532
Orleans	516	1,140	229,331	343	895	163,697	173	245	65,634
Oswego	813	1,668	418,012	601	1,423	312,433	212	245	105,579
Otsego	123	213	57,481	78	162	33,072	45	51	24,409
Putnam	123	201	82,447	62	137	36,820	61	64	45,627
Rensselaer	1,359	2,887	639,536	935	2,385	440,770	424	502	198,766
Rockland	1,168	3,107	700,273	630	1,827	400,887	538	1,280	299,386
St. Lawrence	1,027	1,992	418,422	661	1,489	283,152	366	503	135,270
Saratoga	268	417	124,455	173	313	77,049	95	104	47,406
Schenectady	1,037	2,132	516,559	737	1,719	367,460	300	413	149,099
Schoharie	100	191	53,270	67	156	31,875	33	35	21,395
Schuyler	133	287	60,572	93	243	45,940	40	44	14,632
Seneca	159	325	68,751	102	240	43,267	57	85	25,484
Steuben	842	1,616	324,527	499	1,206	196,248	343	410	128,279
Suffolk	7,300	14,786	6,394,436	3,899	10,055	4,489,969	3,401	4,731	1,904,467
Sullivan	567	1,207	263,235	414	1,031	197,617	153	176	65,618
Tioga	315	654	134,347	239	553	107,174	76	101	27,173
Tompkins	664	1,234	333,490	401	936	190,090	263	298	143,400
Ulster	1,247	2,500	710,644	924	2,107	554,021	323	393	156,623
Warren	262	463	119,083	154	342	69,090	108	121	49,993
Washington	346	571	169,693	204	406	89,456	142	165	80,237
Wayne	480	868	214,017	286	661	131,321	194	207	82,696
Westchester	9,253	19,615	7,140,368	5,274	13,234	4,457,298	3,979	6,381	2,683,070
Wyoming	186	325	70,729	119	258	49,489	67	67	21,240
Yates	103	172	37,441	54	121	22,252	49	51	15,189

* Expenditures partially estimated.

Table 9
 TEMPORARY ASSISTANCE TO NEEDY FAMILIES (TANF) - FP BY PROGRAM
 Cases, Recipients, Children, Adults and Expenditures by Local District
 January 2002

(See NOTICE, page 3)

Local District	Family Assistance					Safety Net Assistance - FP				
	Cases	Recipients	Children	Adults	Expenditures	Cases	Recipients	Children	Adults	Expenditures
New York State	168,403	414,687	294,543	120,144	\$88,624,064	1,600	4,202	2,523	1,679	\$964,750
New York City*	112,702	272,605	192,103	80,502	56,805,000	134	303	158	145	38,000
Rest of State	55,701	142,082	102,440	39,642	31,819,064	1,466	3,899	2,365	1,534	926,750
Albany	2,306	5,889	4,081	1,808	1,293,724	25	65	38	27	12,285
Allegany	340	853	582	271	138,717	0	0	0	0	0
Broome	1,289	3,220	2,316	904	621,789	37	91	49	42	15,905
Cattaraugus	422	1,062	759	303	169,601	10	29	16	13	3,205
Cayuga	320	768	551	217	145,347	10	21	10	11	3,628
Chautauqua	1,467	3,756	2,547	1,209	677,908	29	69	40	29	9,530
Chemung	669	1,715	1,226	489	271,511	4	11	6	5	1,320
Chenango	168	390	289	101	68,389	0	0	0	0	0
Clinton	377	888	631	257	166,246	9	19	10	9	4,263
Columbia	242	531	381	150	110,822	0	0	0	0	0
Cortland	300	782	517	265	149,357	6	15	8	7	2,620
Delaware	115	244	192	52	42,604	1	1	0	1	950
Dutchess	786	1,795	1,376	419	437,178	31	50	25	25	15,552
Erie	7,550	19,794	14,302	5,492	3,320,260	269	728	422	306	125,398
Essex	128	312	202	110	55,320	4	11	7	4	1,559
Franklin	207	437	306	131	75,411	2	5	2	3	1,025
Fulton	268	599	410	189	108,762	2	6	4	2	904
Genesee	176	469	343	126	90,194	5	13	7	6	3,843
Greene	270	654	434	220	125,541	1	1	0	1	334
Hamilton	7	14	8	6	2,536	0	0	0	0	0
Herkimer	254	613	434	179	119,050	1	4	2	2	234
Jefferson	596	1,568	1,050	518	276,042	12	40	23	17	5,279
Lewis	84	200	143	57	33,167	0	0	0	0	0
Livingston	351	835	512	323	164,096	16	40	22	18	8,724
Madison	123	250	204	46	53,680	0	0	0	0	0
Monroe	8,046	21,869	16,082	5,787	4,207,522	511	1,391	910	481	289,780
Montgomery	199	568	409	159	82,648	0	0	0	0	0
Nassau	2,648	6,109	4,672	1,437	1,696,252	34	86	52	34	21,528
Niagara	1,547	3,869	2,664	1,205	628,720	48	141	86	55	20,800
Oneida	1,529	4,370	3,166	1,204	776,790	33	93	57	36	18,899
Onondaga	4,083	10,800	7,795	3,005	1,895,724	21	55	29	26	9,791
Ontario	355	811	562	249	195,168	6	21	13	8	7,608
Orange	1,844	4,975	3,688	1,287	1,152,410	25	67	37	30	17,917
Orleans	338	885	584	301	161,032	5	10	4	6	2,665
Oswego	590	1,395	1,000	395	307,363	11	28	14	14	5,070
Otsego	73	153	128	25	30,564	5	9	4	5	2,508
Putnam	61	135	100	35	36,602	1	2	1	1	218
Rensselaer	925	2,350	1,616	734	435,054	10	35	26	9	5,716
Rockland	613	1,784	1,386	398	382,247	17	43	24	19	18,640
St.Lawrence	660	1,486	977	509	283,143	1	3	1	2	9
Saratoga	173	313	280	33	77,049	0	0	0	0	0
Schenectady	724	1,682	1,299	383	362,146	13	37	24	13	5,314
Schoharie	67	156	122	34	31,875	0	0	0	0	0
Schuyler	93	243	170	73	45,940	0	0	0	0	0
Seneca	100	235	165	70	41,883	2	5	3	2	1,384
Steuben	494	1,195	833	362	194,884	5	11	6	5	1,364
Suffolk	3,813	9,814	7,375	2,439	4,361,304	86	241	147	94	128,665
Sullivan	413	1,028	754	274	197,045	1	3	2	1	572
Tioga	236	546	374	172	104,242	3	7	3	4	2,932
Tompkins	384	896	610	286	179,910	17	40	21	19	10,180
Ulster	881	2,003	1,464	539	530,658	43	104	60	44	23,363
Warren	152	335	235	100	68,118	2	7	5	2	972
Washington	202	402	289	113	88,951	2	4	2	2	505
Wayne	282	647	493	154	129,180	4	14	9	5	2,141
Westchester	5,191	13,020	9,101	3,919	4,347,104	83	214	129	85	110,194
Wyoming	116	249	166	83	48,032	3	9	5	4	1,457
Yates	54	121	85	36	22,252	0	0	0	0	0

* Expenditures partially estimated.

Table 10
SAFETY NET ASSISTANCE - FNP
 Cases, Recipients, Children, Adults and Expenditures by Local District
 January 2002
 (See NOTICE, page 3)

Local District	Safety Net Assistance - FNP				
	Cases	Recipients	Children	Adults	Expenditures
New York State	141,923	237,178	88,172	149,006	\$56,085,793
New York City*	107,090	185,606	71,685	113,921	39,309,000
Rest of State	34,833	51,572	16,487	35,085	16,776,793
Albany	1,231	1,564	323	1,241	676,639
Allegany	148	237	78	159	48,814
Broome	691	948	256	692	323,981
Cattaraugus	221	272	42	230	81,448
Cayuga	102	139	35	104	44,348
Chautauqua	737	1,010	271	739	242,244
Chemung	237	312	78	234	97,902
Chenango	57	68	10	58	25,804
Clinton	236	277	41	236	114,423
Columbia	130	157	26	131	52,693
Cortland	150	176	29	147	66,595
Delaware	68	79	11	68	25,320
Dutchess	421	528	129	399	187,871
Erie	4,958	7,836	2,785	5,051	1,963,584
Essex	57	70	12	58	18,671
Franklin	86	117	29	88	25,198
Fulton	131	140	2	138	78,359
Genesee	108	119	17	102	51,144
Greene	151	177	26	151	61,041
Hamilton	7	7	0	7	1,852
Herkimer	83	94	19	75	23,706
Jefferson	409	525	110	415	172,614
Lewis	37	49	13	36	15,293
Livingston	237	265	27	238	109,563
Madison	36	37	6	31	14,463
Monroe	5,963	9,901	3,934	5,967	2,730,022
Montgomery	109	111	1	110	47,601
Nassau	1,651	2,353	702	1,651	847,023
Niagara	867	1,366	501	865	361,707
Oneida	771	1,153	374	779	326,375
Onondaga	2,155	2,828	724	2,104	793,372
Ontario	279	345	67	278	196,919
Orange	867	1,640	745	895	459,532
Orleans	173	245	71	174	65,634
Oswego	212	245	35	210	105,579
Otsego	45	51	5	46	24,409
Putnam	61	64	6	58	45,627
Rensselaer	424	502	69	433	198,766
Rockland	538	1,280	652	628	299,386
St. Lawrence	366	503	138	365	135,270
Saratoga	95	104	19	85	47,406
Schenectady	300	413	121	292	149,099
Schoharie	33	35	3	32	21,395
Schuyler	40	44	2	42	14,632
Seneca	57	85	32	53	25,484
Steuben	343	410	66	344	128,279
Suffolk	3,401	4,731	1,358	3,373	1,904,467
Sullivan	153	176	24	152	65,618
Tioga	76	101	23	78	27,173
Tompkins	263	298	35	263	143,400
Ulster	323	393	82	311	156,623
Warren	108	121	11	110	49,993
Washington	142	165	29	136	80,237
Wayne	194	207	21	186	82,696
Westchester	3,979	6,381	2,256	4,125	2,683,070
Wyoming	67	67	2	65	21,240
Yates	49	51	4	47	15,189

* Expenditures partially estimated.

Table 11
SAFETY NET ASSISTANCE - FNP BY CASE CATEGORY
(Maintenance of Effort (MOE) vs. Non-Maintenance of Effort (Non-MOE))
Cases, Recipients, Children, Adults and Expenditures by Local District
January 2002

(See NOTICE, page 3)

Local District	Maintenance of Effort (MOE)					Non-Maintenance of Effort (Non-MOE)				
	Cases	Recipients	Children	Adults	Expenditures	Cases	Recipients	Children	Adults	Expenditures
New York State	35,418	121,688	82,077	39,611	\$17,391,782	106,505	115,490	6,095	109,395	\$38,694,011
New York City*	30,729	102,932	68,494	34,438	14,757,000	76,361	82,674	3,191	79,483	24,552,000
Rest of State	4,689	18,756	13,583	5,173	2,634,782	30,144	32,816	2,904	29,912	14,142,011
Albany	90	343	248	95	50,611	1,141	1,221	75	1,146	626,028
Allegany	26	100	70	30	8,320	122	137	8	129	40,494
Broome	74	301	215	86	30,721	617	647	41	606	293,260
Cattaraugus	8	31	20	11	2,697	213	241	22	219	78,751
Cayuga	10	44	32	12	5,277	92	95	3	92	39,071
Chautauqua	79	284	207	77	31,797	658	726	64	662	210,447
Chemung	16	75	55	20	7,612	221	237	23	214	90,290
Chenango	2	9	6	3	1,135	55	59	4	55	24,669
Clinton	9	34	23	11	3,239	227	243	18	225	111,184
Columbia	7	27	20	7	2,411	123	130	6	124	50,282
Cortland	9	34	24	10	3,268	141	142	5	137	63,327
Delaware	1	5	4	1	190	67	74	7	67	25,130
Dutchess	28	92	64	28	10,307	393	436	65	371	177,564
Erie	864	3,405	2,466	939	342,399	4,094	4,431	319	4,112	1,621,185
Essex	3	13	10	3	2,040	54	57	2	55	16,631
Franklin	15	44	29	15	5,003	71	73	0	73	20,195
Fulton	0	0	0	0	0	131	140	2	138	78,359
Genesee	2	6	5	1	705	106	113	12	101	50,439
Greene	3	12	9	3	1,068	148	165	17	148	59,973
Hamilton	0	0	0	0	0	7	7	0	7	1,852
Herkimer	1	6	5	1	23	82	88	14	74	23,683
Jefferson	39	134	90	44	20,626	370	391	20	371	151,988
Lewis	2	8	5	3	880	35	41	8	33	14,413
Livingston	9	26	16	10	3,330	228	239	11	228	106,233
Madison	1	2	1	1	555	35	35	5	30	13,908
Monroe	1,220	4,762	3,500	1,262	635,543	4,743	5,139	434	4,705	2,094,479
Montgomery	0	0	0	0	0	109	111	1	110	47,601
Nassau	201	754	542	212	123,618	1,450	1,599	160	1,439	723,405
Niagara	144	567	412	155	60,805	723	799	89	710	300,902
Oneida	97	402	296	106	39,228	674	751	78	673	287,147
Onondaga	155	658	490	168	71,827	2,000	2,170	234	1,936	721,545
Ontario	18	69	50	19	9,802	261	276	17	259	187,117
Orange	147	846	646	200	61,313	720	794	99	695	398,219
Orleans	7	28	20	8	4,134	166	217	51	166	61,500
Oswego	11	38	26	12	4,211	201	207	9	198	101,368
Otsego	1	7	5	2	198	44	44	0	44	24,211
Putnam	0	0	0	0	0	61	64	6	58	45,627
Rensselaer	13	54	41	13	7,611	411	448	28	420	191,155
Rockland	108	678	501	177	62,312	430	602	151	451	237,074
St.Lawrence	46	169	119	50	19,785	320	334	19	315	115,485
Saratoga	1	8	7	1	100	94	96	12	84	47,306
Schenectady	20	88	66	22	9,257	280	325	55	270	139,842
Schoharie	0	0	0	0	0	33	35	3	32	21,395
Schuyler	0	0	0	0	0	40	44	2	42	14,632
Seneca	7	33	26	7	2,922	50	52	6	46	22,562
Steuben	5	21	15	6	2,161	338	389	51	338	126,118
Suffolk	378	1,490	1,077	413	420,384	3,023	3,241	281	2,960	1,484,083
Sullivan	7	25	18	7	2,244	146	151	6	145	63,374
Tioga	6	28	20	8	2,941	70	73	3	70	24,232
Tompkins	8	30	22	8	2,974	255	268	13	255	140,426
Ulster	22	87	62	25	8,980	301	306	20	286	147,643
Warren	1	2	1	1	468	107	119	10	109	49,525
Washington	3	13	10	3	892	139	152	19	133	79,345
Wayne	2	7	5	2	449	192	200	16	184	82,247
Westchester	762	2,856	1,982	874	546,173	3,217	3,525	274	3,251	2,136,897
Wyoming	1	1	0	1	236	66	66	2	64	21,004
Yates	0	0	0	0	0	49	51	4	47	15,189

* Expenditures partially estimated.

Table 12
SAFETY NET ASSISTANCE - FNP - CASH TOTAL
Cases, Recipients, Children, Adults and Expenditures by Local District
January 2002
(See NOTICE, page 3)

Local District	Safety Net Assistance - FNP - Cash Total				
	Cases	Recipients	Children	Adults	Expenditures
New York State	See Note	See Note	See Note	See Note	See Note
New York City	See Note	See Note	See Note	See Note	See Note
Rest of State	21,196	23,777	2,673	21,104	\$9,458,414
Albany	946	1,032	80	952	475,775
Allegany	108	125	9	116	33,505
Broome	435	478	52	426	179,305
Cattaraugus	180	205	18	187	66,470
Cayuga	76	84	8	76	30,615
Chautauqua	510	563	47	516	164,449
Chemung	178	191	15	176	66,771
Chenango	45	46	0	46	20,116
Clinton	185	197	11	186	87,345
Columbia	109	115	4	111	38,651
Cortland	109	119	12	107	47,082
Delaware	57	63	6	57	18,132
Dutchess	217	253	47	206	84,572
Erie	2,362	2,675	304	2,371	944,069
Essex	44	47	0	47	13,080
Franklin	57	59	1	58	15,658
Fulton	95	104	2	102	44,514
Genesee	74	79	8	71	29,446
Greene	127	134	4	130	46,865
Hamilton	7	7	0	7	1,852
Herkimer	72	74	10	64	19,629
Jefferson	268	297	27	270	101,815
Lewis	25	28	3	25	6,963
Livingston	176	189	13	176	79,060
Madison	35	36	6	30	13,513
Monroe	2,711	3,182	506	2,676	1,180,825
Montgomery	92	94	1	93	41,538
Nassau	1,114	1,189	62	1,127	516,211
Niagara	429	453	45	408	158,093
Oneida	531	621	83	538	196,965
Onondaga	1,730	1,942	252	1,690	608,970
Ontario	193	203	12	191	114,074
Orange	478	541	60	481	229,122
Orleans	139	152	12	140	47,540
Oswego	160	171	14	157	76,362
Otsego	30	30	0	30	14,786
Putnam	37	39	2	37	26,000
Rensselaer	327	349	14	335	124,734
Rockland	214	286	67	219	118,083
St.Lawrence	263	272	14	258	87,536
Saratoga	83	92	18	74	38,809
Schenectady	193	224	42	182	87,358
Schoharie	24	26	3	23	11,254
Schuyler	33	37	2	35	10,018
Seneca	31	31	2	29	11,096
Steuben	265	285	19	266	88,557
Suffolk	2,411	2,703	320	2,383	1,075,682
Sullivan	108	114	8	106	44,377
Tioga	59	61	1	60	16,840
Tompkins	155	171	16	155	87,578
Ulster	205	213	19	194	89,114
Warren	91	98	4	94	37,443
Washington	119	130	14	116	62,494
Wayne	146	154	16	138	54,071
Westchester	2,226	2,610	352	2,258	1,540,659
Wyoming	57	57	2	55	18,600
Yates	45	47	4	43	14,373

Note: A breakout of Safety Net Assistance - FNP - Cash and Safety Net Assistance - FNP - Non-Cash data is not available for New York City.

Table 13
SAFETY NET ASSISTANCE - FNP - CASH BY CASE CATEGORY
(Maintenance of Effort (MOE) vs. Non-Maintenance of Effort (Non-MOE))
Cases, Recipients, Children, Adults and Expenditures by Local District
January 2002

(See NOTICE, page 3)

Local District	Maintenance of Effort (MOE)					Non-Maintenance of Effort (Non-MOE)				
	Cases	Recipients	Children	Adults	Expenditures	Cases	Recipients	Children	Adults	Expenditures
New York State	See Note	See Note	See Note	See Note	See Note	See Note	See Note	See Note	See Note	See Note
New York City	See Note	See Note	See Note	See Note	See Note	See Note	See Note	See Note	See Note	See Note
Rest of State	528	1,812	1,204	608	\$322,126	20,668	21,965	1,469	20,496	\$9,136,288
Albany	23	79	54	25	11,869	923	953	26	927	463,906
Allegany	4	10	5	5	899	104	115	4	111	32,606
Broome	10	27	15	12	4,378	425	451	37	414	174,927
Cattaraugus	1	5	3	2	397	179	200	15	185	66,073
Cayuga	2	9	7	2	1,437	74	75	1	74	29,178
Chautauqua	4	11	7	4	1,673	506	552	40	512	162,776
Chemung	1	4	3	1	554	177	187	12	175	66,217
Chenango	0	0	0	0	0	45	46	0	46	20,116
Clinton	1	6	4	2	216	184	191	7	184	87,129
Columbia	0	0	0	0	0	109	115	4	111	38,651
Cortland	2	11	8	3	1,409	107	108	4	104	45,673
Delaware	0	0	0	0	0	57	63	6	57	18,132
Dutchess	8	23	15	8	2,317	209	230	32	198	82,255
Erie	77	256	168	88	31,371	2,285	2,419	136	2,283	912,698
Essex	0	0	0	0	0	44	47	0	47	13,080
Franklin	1	2	1	1	246	56	57	0	57	15,412
Fulton	0	0	0	0	0	95	104	2	102	44,514
Genesee	0	0	0	0	0	74	79	8	71	29,446
Greene	1	1	0	1	262	126	133	4	129	46,603
Hamilton	0	0	0	0	0	7	7	0	7	1,852
Herkimer	0	0	0	0	0	72	74	10	64	19,629
Jefferson	6	21	14	7	2,701	262	276	13	263	99,114
Lewis	0	0	0	0	0	25	28	3	25	6,963
Livingston	2	4	2	2	851	174	185	11	174	78,209
Madison	1	2	1	1	555	34	34	5	29	12,958
Monroe	123	418	281	137	66,076	2,588	2,764	225	2,539	1,114,749
Montgomery	0	0	0	0	0	92	94	1	93	41,538
Nassau	9	24	11	13	5,384	1,105	1,165	51	1,114	510,827
Niagara	5	10	5	5	1,913	424	443	40	403	156,180
Oneida	17	61	41	20	7,114	514	560	42	518	189,851
Onondaga	36	147	105	42	19,340	1,694	1,795	147	1,648	589,630
Ontario	0	0	0	0	0	193	203	12	191	114,074
Orange	15	57	42	15	7,771	463	484	18	466	221,351
Orleans	3	10	7	3	1,594	136	142	5	137	45,946
Oswego	5	12	7	5	1,201	155	159	7	152	75,161
Otsego	0	0	0	0	0	30	30	0	30	14,786
Putnam	0	0	0	0	0	37	39	2	37	26,000
Rensselaer	0	0	0	0	0	327	349	14	335	124,734
Rockland	14	50	35	15	7,342	200	236	32	204	110,741
St. Lawrence	1	1	0	1	237	262	271	14	257	87,299
Saratoga	1	8	7	1	100	82	84	11	73	38,709
Schenectady	2	7	5	2	926	191	217	37	180	86,432
Schoharie	0	0	0	0	0	24	26	3	23	11,254
Schuyler	0	0	0	0	0	33	37	2	35	10,018
Seneca	0	0	0	0	0	31	31	2	29	11,096
Steuben	2	7	4	3	918	263	278	15	263	87,639
Suffolk	46	168	110	58	72,113	2,365	2,535	210	2,325	1,003,569
Sullivan	1	3	2	1	581	107	111	6	105	43,796
Tioga	0	0	0	0	0	59	61	1	60	16,840
Tompkins	1	5	4	1	679	154	166	12	154	86,899
Ulster	2	7	4	3	222	203	206	15	191	88,892
Warren	0	0	0	0	0	91	98	4	94	37,443
Washington	0	0	0	0	0	119	130	14	116	62,494
Wayne	0	0	0	0	0	146	154	16	138	54,071
Westchester	100	345	227	118	67,244	2,126	2,265	125	2,140	1,473,415
Wyoming	1	1	0	1	236	56	56	2	54	18,364
Yates	0	0	0	0	0	45	47	4	43	14,373

Note: Data from New York City does not allow the separation of Safety Net - FNP - Cash and Safety Net - FNP - Non-Cash data.

Table 14
SAFETY NET ASSISTANCE - FNP - NON-CASH TOTAL
Cases, Recipients, Children, Adults and Expenditures by Local District
January 2002
(See NOTICE, page 3)

Local District	Safety Net Assistance - FNP - Non-Cash Total				
	Cases	Recipients	Children	Adults	Expenditures
New York State	See Note	See Note	See Note	See Note	See Note
New York City	See Note	See Note	See Note	See Note	See Note
Rest of State	13,637	27,795	13,814	13,981	\$7,318,379
Albany	285	532	243	289	200,864
Allegany	40	112	69	43	15,309
Broome	256	470	204	266	144,676
Cattaraugus	41	67	24	43	14,978
Cayuga	26	55	27	28	13,733
Chautauqua	227	447	224	223	77,795
Chemung	59	121	63	58	31,131
Chenango	12	22	10	12	5,688
Clinton	51	80	30	50	27,078
Columbia	21	42	22	20	14,042
Cortland	41	57	17	40	19,513
Delaware	11	16	5	11	7,188
Dutchess	204	275	82	193	103,299
Erie	2,596	5,161	2,481	2,680	1,019,515
Essex	13	23	12	11	5,591
Franklin	29	58	28	30	9,540
Fulton	36	36	0	36	33,845
Genesee	34	40	9	31	21,698
Greene	24	43	22	21	14,176
Hamilton	0	0	0	0	0
Herkimer	11	20	9	11	4,077
Jefferson	141	228	83	145	70,799
Lewis	12	21	10	11	8,330
Livingston	61	76	14	62	30,503
Madison	1	1	0	1	950
Monroe	3,252	6,719	3,428	3,291	1,549,197
Montgomery	17	17	0	17	6,063
Nassau	537	1,164	640	524	330,812
Niagara	438	913	456	457	203,614
Oneida	240	532	291	241	129,410
Onondaga	425	886	472	414	184,402
Ontario	86	142	55	87	82,845
Orange	389	1,099	685	414	230,410
Orleans	34	93	59	34	18,094
Oswego	52	74	21	53	29,217
Otsego	15	21	5	16	9,623
Putnam	24	25	4	21	19,627
Rensselaer	97	153	55	98	74,032
Rockland	324	994	585	409	181,303
St.Lawrence	103	231	124	107	47,734
Saratoga	12	12	1	11	8,597
Schenectady	107	189	79	110	61,741
Schoharie	9	9	0	9	10,141
Schuyler	7	7	0	7	4,614
Seneca	26	54	30	24	14,388
Steuben	78	125	47	78	39,722
Suffolk	990	2,028	1,038	990	828,785
Sullivan	45	62	16	46	21,241
Tioga	17	40	22	18	10,333
Tompkins	108	127	19	108	55,822
Ulster	118	180	63	117	67,509
Warren	17	23	7	16	12,550
Washington	23	35	15	20	17,743
Wayne	48	53	5	48	28,625
Westchester	1,753	3,771	1,904	1,867	1,142,411
Wyoming	10	10	0	10	2,640
Yates	4	4	0	4	816

Note: A breakout of Safety Net Assistance - FNP - Cash and Safety Net Assistance - FNP - Non-Cash data is not available for New York City.

Table 15
 SAFETY NET ASSISTANCE - FNP - NON-CASH BY CASE CATEGORY
 (Maintenance of Effort (MOE) vs. Non-Maintenance of Effort (Non-MOE))
 Cases, Recipients, Children, Adults and Expenditures by Local District
 January 2002

(See NOTICE, page 3)

Local District	Maintenance of Effort (MOE)					Non-Maintenance of Effort (Non-MOE)				
	Cases	Recipients	Children	Adults	Expenditures	Cases	Recipients	Children	Adults	Expenditures
New York State	See Note	See Note	See Note	See Note	See Note	See Note	See Note	See Note	See Note	See Note
New York City	See Note	See Note	See Note	See Note	See Note	See Note	See Note	See Note	See Note	See Note
Rest of State	4,161	16,944	12,379	4,565	\$2,312,656	9,476	10,851	1,435	9,416	\$5,005,723
Albany	67	264	194	70	38,742	218	268	49	219	162,122
Allegany	22	90	65	25	7,421	18	22	4	18	7,888
Broome	64	274	200	74	26,343	192	196	4	192	118,333
Cattaraugus	7	26	17	9	2,300	34	41	7	34	12,678
Cayuga	8	35	25	10	3,840	18	20	2	18	9,893
Chautauqua	75	273	200	73	30,124	152	174	24	150	47,671
Chemung	15	71	52	19	7,058	44	50	11	39	24,073
Chenango	2	9	6	3	1,135	10	13	4	9	4,553
Clinton	8	28	19	9	3,023	43	52	11	41	24,055
Columbia	7	27	20	7	2,411	14	15	2	13	11,631
Cortland	7	23	16	7	1,859	34	34	1	33	17,654
Delaware	1	5	4	1	190	10	11	1	10	6,998
Dutchess	20	69	49	20	7,990	184	206	33	173	95,309
Erie	787	3,149	2,298	851	311,028	1,809	2,012	183	1,829	708,487
Essex	3	13	10	3	2,040	10	10	2	8	3,551
Franklin	14	42	28	14	4,757	15	16	0	16	4,783
Fulton	0	0	0	0	0	36	36	0	36	33,845
Genesee	2	6	5	1	705	32	34	4	30	20,993
Greene	2	11	9	2	806	22	32	13	19	13,370
Hamilton	0	0	0	0	0	0	0	0	0	0
Herkimer	1	6	5	1	23	10	14	4	10	4,054
Jefferson	33	113	76	37	17,925	108	115	7	108	52,874
Lewis	2	8	5	3	880	10	13	5	8	7,450
Livingston	7	22	14	8	2,479	54	54	0	54	28,024
Madison	0	0	0	0	0	1	1	0	1	950
Monroe	1,097	4,344	3,219	1,125	569,467	2,155	2,375	209	2,166	979,730
Montgomery	0	0	0	0	0	17	17	0	17	6,063
Nassau	192	730	531	199	118,234	345	434	109	325	212,578
Niagara	139	557	407	150	58,892	299	356	49	307	144,722
Oneida	80	341	255	86	32,114	160	191	36	155	97,296
Onondaga	119	511	385	126	52,487	306	375	87	288	131,915
Ontario	18	69	50	19	9,802	68	73	5	68	73,043
Orange	132	789	604	185	53,542	257	310	81	229	176,868
Orleans	4	18	13	5	2,540	30	75	46	29	15,554
Oswego	6	26	19	7	3,010	46	48	2	46	26,207
Otsego	1	7	5	2	198	14	14	0	14	9,425
Putnam	0	0	0	0	0	24	25	4	21	19,627
Rensselaer	13	54	41	13	7,611	84	99	14	85	66,421
Rockland	94	628	466	162	54,970	230	366	119	247	126,333
St.Lawrence	45	168	119	49	19,548	58	63	5	58	28,186
Saratoga	0	0	0	0	0	12	12	1	11	8,597
Schenectady	18	81	61	20	8,331	89	108	18	90	53,410
Schoharie	0	0	0	0	0	9	9	0	9	10,141
Schuyler	0	0	0	0	0	7	7	0	7	4,614
Seneca	7	33	26	7	2,922	19	21	4	17	11,466
Steuben	3	14	11	3	1,243	75	111	36	75	38,479
Suffolk	332	1,322	967	355	348,271	658	706	71	635	480,514
Sullivan	6	22	16	6	1,663	39	40	0	40	19,578
Tioga	6	28	20	8	2,941	11	12	2	10	7,392
Tompkins	7	25	18	7	2,295	101	102	1	101	53,527
Ulster	20	80	58	22	8,758	98	100	5	95	58,751
Warren	1	2	1	1	468	16	21	6	15	12,082
Washington	3	13	10	3	892	20	22	5	17	16,851
Wayne	2	7	5	2	449	46	46	0	46	28,176
Westchester	662	2,511	1,755	756	478,929	1,091	1,260	149	1,111	663,482
Wyoming	0	0	0	0	0	10	10	0	10	2,640
Yates	0	0	0	0	0	4	4	0	4	816

Note: Data from New York City does not allow the separation of Safety Net - FNP - Cash and Safety Net - FNP - Non-Cash data.

Table 16
FOOD STAMPS
Households, Persons and Value of Food Stamps Benefits by Local District
January 2002

Local District	Total			Temporary Assistance			Non-Temporary Assistance		
	Households	Persons	Food Stamps Benefits	Households	Persons	Food Stamps Benefits	Households	Persons	Food Stamps Benefits
New York State	665,795	1,319,574	\$124,554,107	463,452	825,179	\$85,543,207	202,343	494,395	\$39,010,900
New York City	415,846	798,396	82,644,581	338,982	622,353	67,368,618	76,864	176,043	15,275,963
Rest of State	249,949	521,178	41,909,526	124,470	202,826	18,174,589	125,479	318,352	23,734,937
Albany	8,598	17,533	1,451,349	4,885	8,301	782,692	3,713	9,232	668,657
Allegany	1,812	3,783	277,998	842	1,330	108,485	970	2,453	169,513
Broome	6,000	11,905	938,534	3,010	4,694	420,727	2,990	7,211	517,807
Cattaraugus	3,041	6,164	432,312	1,225	1,713	140,490	1,816	4,451	291,822
Cayuga	2,159	4,830	376,009	754	1,068	90,769	1,405	3,762	285,240
Chautauqua	5,523	11,755	964,526	2,892	4,867	464,529	2,631	6,888	499,997
Chemung	2,702	5,869	450,645	1,355	2,191	190,543	1,347	3,678	260,102
Chenango	1,704	3,758	286,522	483	666	57,186	1,221	3,092	229,336
Clinton	2,945	5,581	421,385	1,348	1,706	140,938	1,597	3,875	280,447
Columbia	1,365	2,521	196,052	584	815	72,726	781	1,706	123,326
Cortland	1,577	3,324	261,077	704	1,066	94,950	873	2,258	166,127
Delaware	1,287	2,446	172,917	482	600	45,155	805	1,846	127,762
Dutchess	3,450	6,343	494,759	1,546	2,249	204,561	1,904	4,094	290,198
Erie	36,226	74,130	6,110,598	18,566	30,568	2,881,777	17,660	43,562	3,228,821
Essex	1,153	2,167	155,747	508	662	48,456	645	1,505	107,291
Franklin	1,658	3,437	254,297	656	867	67,503	1,002	2,570	186,794
Fulton	1,935	4,242	331,697	761	1,027	90,320	1,174	3,215	241,377
Genesee	1,267	2,585	203,039	520	748	65,839	747	1,837	137,200
Greene	1,342	2,646	212,108	617	937	89,613	725	1,709	122,495
Hamilton	163	245	12,722	28	36	2,766	135	209	9,956
Herkimer	1,967	4,220	325,080	693	980	82,478	1,274	3,240	242,602
Jefferson	3,695	8,231	637,984	1,575	2,427	202,789	2,120	5,804	435,195
Lewis	834	1,829	133,430	283	379	29,039	551	1,450	104,391
Livingston	1,668	3,254	258,586	777	1,249	120,029	891	2,005	138,557
Madison	1,524	3,178	246,088	545	635	48,663	979	2,543	197,425
Monroe	26,983	58,347	4,762,736	15,205	28,260	2,508,472	11,778	30,087	2,254,264
Montgomery	1,921	4,373	358,598	645	893	80,035	1,276	3,480	278,563
Nassau	9,672	17,112	1,422,554	5,936	9,086	817,409	3,736	8,026	605,145
Niagara	6,339	13,055	1,043,855	3,308	5,549	489,716	3,031	7,506	554,139
Oneida	9,406	20,160	1,605,540	3,879	5,994	524,557	5,527	14,166	1,080,983
Onondaga	13,665	30,677	2,526,006	6,885	12,282	1,149,927	6,780	18,395	1,376,079
Ontario	2,322	4,395	334,658	998	1,441	127,166	1,324	2,954	207,492
Orange	7,271	18,491	1,608,321	3,070	5,789	550,027	4,201	12,702	1,058,294
Orleans	1,329	3,011	242,381	640	1,170	106,667	689	1,841	135,714
Oswego	3,655	8,691	678,767	1,328	1,957	170,189	2,327	6,734	508,578
Otsego	1,252	2,366	170,980	437	493	37,574	815	1,873	133,406
Putnam	488	675	42,340	283	337	23,203	205	338	19,137
Rensselaer	4,005	8,293	715,831	1,881	3,080	300,827	2,124	5,213	415,004
Rockland	4,742	15,156	1,243,339	1,792	3,420	237,771	2,950	11,736	1,005,568
St. Lawrence	3,557	7,436	560,362	1,645	2,441	211,584	1,912	4,995	348,778
Saratoga	2,757	5,353	395,646	912	1,011	78,677	1,845	4,342	316,969
Schenectady	4,092	8,865	704,350	1,675	2,470	219,187	2,417	6,395	485,163
Schoharie	791	1,606	114,258	263	321	22,496	528	1,285	91,762
Schuyler	456	957	74,208	212	354	30,591	244	603	43,617
Seneca	845	1,639	120,601	300	420	33,302	545	1,219	87,299
Steuben	2,868	6,108	460,493	1,319	2,004	175,617	1,549	4,104	284,876
Suffolk	14,571	26,375	2,156,237	8,998	14,266	1,248,490	5,573	12,109	907,747
Sullivan	2,089	4,280	322,810	948	1,420	121,450	1,141	2,860	201,360
Tioga	1,091	2,435	184,920	465	702	62,200	626	1,733	122,720
Tompkins	1,924	3,705	277,131	970	1,441	118,240	954	2,264	158,891
Ulster	3,523	6,566	486,707	1,851	2,814	234,468	1,672	3,752	252,239
Warren	1,697	3,267	257,197	793	1,124	97,795	904	2,143	159,402
Washington	1,639	3,265	247,690	654	820	68,838	985	2,445	178,852
Wayne	2,332	4,290	333,789	988	1,260	109,945	1,344	3,030	223,844
Westchester	15,523	31,258	2,636,349	9,996	17,724	1,614,621	5,527	13,534	1,021,728
Wyoming	812	1,627	116,137	320	424	36,482	492	1,203	79,655
Yates	737	1,368	99,274	235	278	24,043	502	1,090	75,231

Note: Food Stamps households containing only SSI recipients are counted as TA in accordance with Federal reporting requirements.

Note: Rest of State data does not include the following FAP data: 46 households, 55 persons, and \$5,549 in expenditures.

Table 17
SUPPLEMENTAL SECURITY INCOME
 Recipients, Total Program Expenditures, Federal and State Shares, by Local District
 January 2002

Local District	Expenditures			
	Recipients	Total	Federal	State
New York State*	624,564	\$289,862,637	\$242,259,280	\$47,603,357
New York City	397,049	191,725,246	163,882,738	27,842,508
Rest of State	217,483	94,649,136	76,105,437	18,543,699
Albany	6,140	2,711,588	2,152,131	559,457
Allegany	1,443	631,151	511,199	119,952
Broome	5,041	2,198,283	1,819,685	378,598
Cattaraugus	2,360	1,039,453	856,243	183,210
Cayuga	1,738	769,253	595,351	173,902
Chautauqua	3,913	1,724,985	1,412,316	312,669
Chemung	2,771	1,190,096	987,536	202,560
Chenango	1,336	529,631	450,457	79,174
Clinton	2,436	997,868	813,265	184,603
Columbia	1,482	623,659	475,781	147,878
Cortland	1,171	494,211	399,059	95,152
Delaware	1,207	472,650	377,871	94,779
Dutchess	4,279	1,832,891	1,395,185	437,706
Erie	24,980	11,250,421	9,219,419	2,031,002
Essex	950	387,900	286,005	101,895
Franklin	1,565	638,140	507,059	131,081
Fulton	1,622	653,292	518,655	134,637
Genesee	981	376,091	295,439	80,652
Greene	1,065	476,292	383,286	93,006
Hamilton	75	25,107	20,868	4,239
Herkimer	1,525	624,966	504,702	120,264
Jefferson	2,846	1,248,377	1,025,974	222,403
Lewis	633	272,771	225,687	47,084
Livingston	911	371,052	308,267	62,785
Madison	1,219	476,416	375,201	101,215
Monroe	17,731	8,099,863	6,665,455	1,434,408
Montgomery	1,324	549,125	451,901	97,224
Nassau	16,559	7,110,814	5,537,789	1,573,025
Niagara	4,750	2,047,675	1,651,271	396,404
Oneida	7,101	3,149,466	2,602,861	546,605
Onondaga	11,174	5,021,186	4,170,381	850,805
Ontario	1,536	627,365	502,619	124,746
Orange	5,927	2,554,000	2,084,697	469,303
Orleans	891	367,841	301,032	66,809
Oswego	2,863	1,261,704	1,062,559	199,145
Otsego	1,276	527,276	398,335	128,941
Putnam	732	324,461	239,046	85,415
Rensselaer	3,122	1,323,525	1,060,843	262,682
Rockland	4,418	1,940,151	1,409,815	530,336
St.Lawrence	3,606	1,611,902	1,347,144	264,758
Saratoga	2,459	959,607	765,583	194,024
Schenectady	3,713	1,621,732	1,317,874	303,858
Schoharie	690	285,002	211,530	73,472
Schuyler	469	187,978	147,799	40,179
Seneca	663	264,697	209,600	55,097
Steuben	2,910	1,311,028	1,096,879	214,149
Suffolk	20,648	8,977,888	6,932,962	2,044,926
Sullivan	2,500	1,049,210	768,656	280,554
Tioga	976	404,894	346,696	58,198
Tompkins	1,476	614,592	481,972	132,620
Ulster	3,937	1,649,862	1,321,636	328,226
Warren	1,411	553,513	452,554	100,959
Washington	1,405	545,979	439,926	106,053
Wayne	1,784	758,506	618,410	140,096
Westchester	14,693	6,519,179	5,263,366	1,255,813
Wyoming	615	245,735	196,773	48,962
Yates	435	166,836	130,832	36,004
Mental Hygiene	10,032	3,488,255	2,271,105	1,217,150

* Only NYS includes Mental Hygiene

Table 18
SUPPLEMENTAL SECURITY INCOME
 SSI Recipients by Living Arrangement and Location
 January 2002

Living Arrangement	New York State	New York City	Rest of State	Mental Hygiene
Living Alone	325,709	223,497	102,164	48
Living With Others	211,130	132,778	78,329	23
Living in Household of Another	24,321	15,494	8,822	5
Congregate Care Level I	5,700	602	460	4,638
Congregate Care Level II	36,506	14,119	21,847	540
Congregate Care Level III	163	35	128	0
Title XIX Institution	21,035	10,524	5,733	4,778
Total	624,564	397,049	217,483	10,032

Table 19
SUPPLEMENTAL SECURITY INCOME
 SSI Recipients by Living Arrangement and Category of Assistance
 January 2002

Living Arrangement	Total	Category of Assistance		
		Aged	Blind	Disabled
Living Alone	325,709	101,495	1,682	222,532
Living With Others	211,130	17,442	1,106	192,582
Living in Household of Another	24,329	10,191	162	13,976
Congregate Care Level I	5,700	296	26	5,378
Congregate Care Level II	36,506	5,080	187	31,239
Congregate Care Level III	163	1	0	162
Title XIX Institution	21,027	3,404	125	17,498
Total	624,564	137,909	3,288	483,367

Table 20
CHILD SUPPORT COLLECTIONS (IV-D)
January 2002

Local District	Total	Current Assistance	Former Assistance	Never Assistance
New York State	\$90,891,078	\$7,030,707	\$34,334,947	\$49,525,424
New York City	33,879,598	4,182,274	14,295,207	15,402,117
Rest of State	57,011,480	2,848,433	20,039,740	34,123,307
Albany	1,644,089	62,894	479,956	1,101,239
Allegany	349,924	24,961	193,292	131,671
Broome	1,072,049	52,749	382,085	637,215
Cattaraugus	607,364	43,405	280,065	283,894
Cayuga	547,801	18,138	201,266	328,397
Chautauqua	932,811	66,088	526,482	340,241
Chemung	680,566	29,817	249,037	401,712
Chenango	361,342	14,922	115,146	231,274
Clinton	518,028	18,975	222,182	276,871
Columbia	344,422	12,133	113,565	218,724
Cortland	323,270	10,511	129,808	182,951
Delaware	290,146	9,419	98,950	181,777
Dutchess	1,656,968	59,149	433,256	1,164,563
Erie	4,090,032	252,340	2,130,663	1,707,029
Essex	247,655	10,022	137,025	100,608
Franklin	383,674	12,128	158,592	212,954
Fulton	388,622	15,573	137,458	235,591
Genesee	373,847	14,623	121,409	237,815
Greene	317,594	13,273	124,891	179,430
Hamilton	33,430	375	11,816	21,239
Herkimer	480,600	17,086	206,091	257,423
Jefferson	764,431	38,490	290,480	435,461
Lewis	177,386	9,132	56,326	111,928
Livingston	476,648	23,152	151,568	301,928
Madison	380,715	11,781	151,238	217,696
Monroe	3,885,428	305,603	1,719,801	1,860,024
Montgomery	346,305	15,763	138,892	191,650
Nassau	4,784,340	180,158	1,016,961	3,587,221
Niagara	1,259,885	85,402	650,705	523,778
Oneida	976,819	62,209	437,705	476,905
Onondaga	2,702,494	143,015	1,198,874	1,360,605
Ontario	681,078	24,771	214,698	441,609
Orange	1,918,494	107,227	513,322	1,297,945
Orleans	249,416	16,968	115,788	116,660
Oswego	911,001	33,957	456,896	420,148
Otsego	331,387	10,695	78,452	242,240
Putnam	425,647	3,634	60,261	361,752
Rensselaer	1,021,440	42,229	351,366	627,845
Rockland	1,319,369	49,346	323,266	946,757
St.Lawrence	656,190	27,863	337,687	290,640
Saratoga	1,106,903	16,771	204,261	885,871
Schenectady	966,942	31,061	263,005	672,876
Schoharie	226,562	10,247	83,628	132,687
Schuyler	113,602	3,094	34,563	75,945
Seneca	260,063	5,166	74,651	180,246
Steuben	617,668	33,089	288,066	296,513
Suffolk	7,273,936	367,313	1,942,506	4,964,117
Sullivan	402,020	26,088	148,175	227,757
Tioga	318,624	18,684	132,931	167,009
Tompkins	465,590	20,149	169,663	275,778
Ulster	977,624	39,785	293,592	644,247
Warren	531,323	16,813	164,540	349,970
Washington	481,563	19,277	150,019	312,267
Wayne	624,710	17,680	174,026	433,004
Westchester	3,323,227	261,256	1,041,906	2,020,065
Wyoming	270,702	9,724	104,083	156,895
Yates	137,714	2,260	52,804	82,650

Note: Effective February 1999, collection amounts include collections made on behalf of other states.