



NEW YORK STATE
OFFICE OF TEMPORARY AND DISABILITY ASSISTANCE
40 North Pearl Street, Albany, New York 12243-0001

George E. Pataki
Governor

Brian J. Wing
Commissioner

Temporary and Disability Assistance Statistics February 2002

Temporary Assistance

Recipients of Temporary Assistance totaled 640,131 in February 2002, decreasing 15,936 (-2.4%) from the previous month. Temporary Assistance expenditures in February 2002 totaled \$139,532,540, decreasing \$6.1 million (-4.2%) from the previous month.

Food Stamps

Food Stamps recipients totaled 1,332,154 in February 2002, increasing 12,580 (+1.0%) over January 2002. February Food Stamps expenditures totaled \$123,578,116, decreasing \$1.0 million (-0.8%) from the previous month.

Supplemental Security Income

SSI recipients (including Mental Hygiene) totaled 629,383 in February 2002, increasing 4,819 (+0.8%) over the previous month, with SSI expenditures totaling \$292,233,419 in February 2002, increasing \$2.4 million (+0.8%) over January 2002 expenditures.

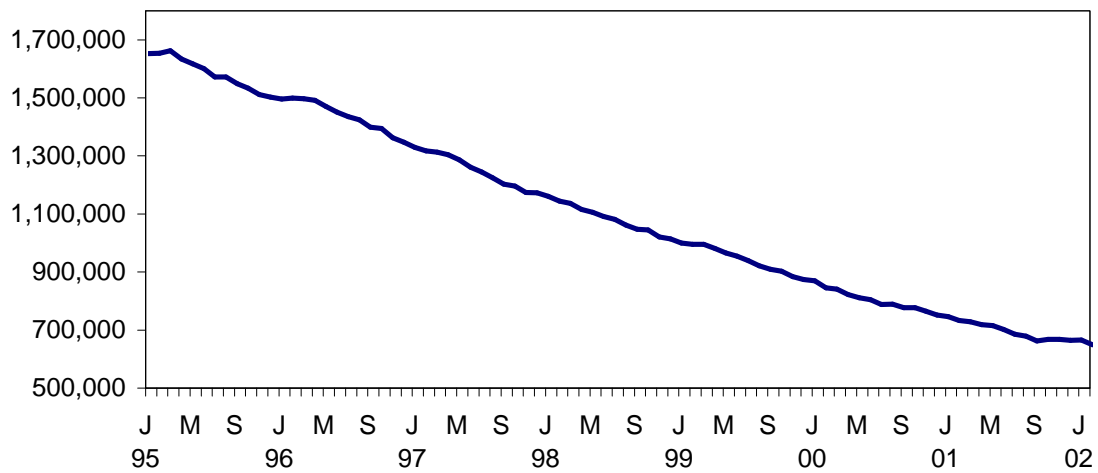
Table of Contents

Page Number

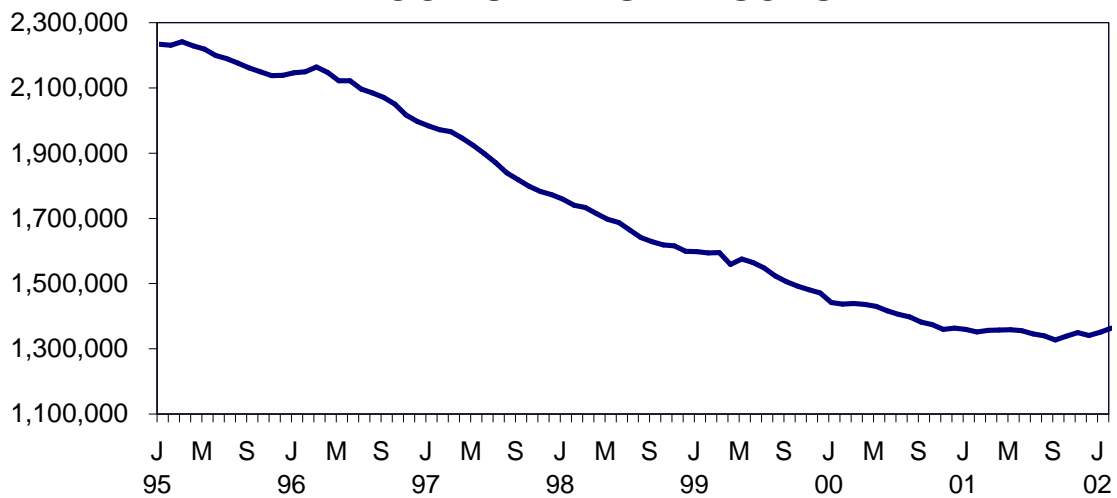
Graphs.....	3
Summary Tables.....	4
Temporary Assistance by Program Area.....	5
Temporary Assistance by Funding Source.....	9
Other Programs.....	17

NEW YORK STATE JANUARY 1995 - FEBRUARY 2002

TEMPORARY ASSISTANCE RECIPIENTS

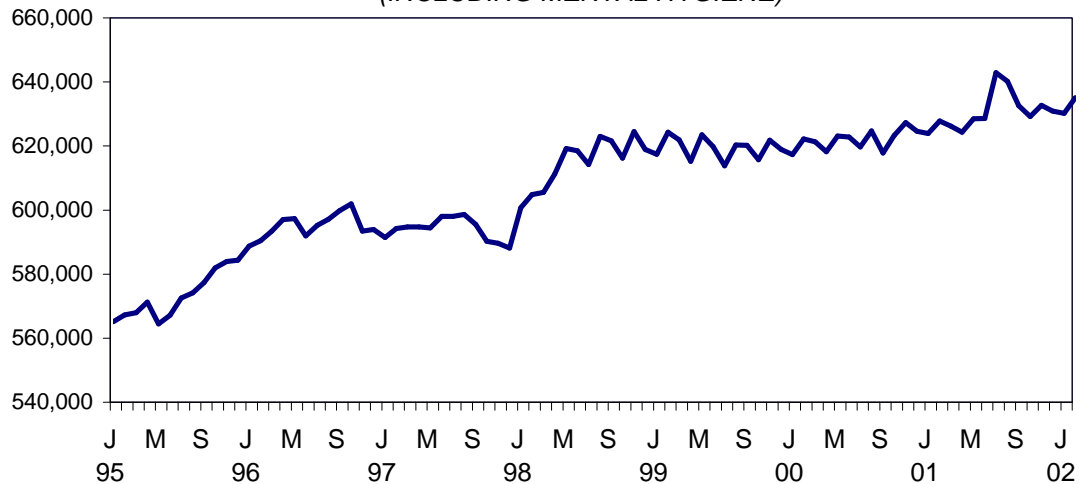


FOOD STAMPS PERSONS



SSI PERSONS

(INCLUDING MENTAL HYGIENE)



SELECTED SUMMARY PROGRAM DATA
BY REGION

Table 1
TEMPORARY AND DISABILITY ASSISTANCE CASES
February 2002

Region	Cases				
	Temporary Assistance by Program			Supplemental Security Income	Food Stamps
	Total	Family Assistance	Safety Net Assistance		
New York State	306,103	160,537	145,566	619,290	672,294
New York City	216,357	107,258	109,099	399,918	422,046
Rest of State	89,746	53,279	36,467	219,372	250,248

Table 2
TEMPORARY AND DISABILITY ASSISTANCE RECIPIENTS
February 2002

Region	Recipients				
	Temporary Assistance by Program			Supplemental Security Income	Food Stamps
	Total	Family Assistance	Safety Net Assistance		
New York State	640,131	389,863	250,268	619,290	1,332,154
New York City	449,859	256,459	193,400	399,918	810,390
Rest of State	190,272	133,404	56,868	219,372	521,764

Table 3
TEMPORARY AND DISABILITY ASSISTANCE EXPENDITURES
February 2002

Region	Expenditures				
	Temporary Assistance by Program			Supplemental Security Income	Food Stamps
	Total	Family Assistance	Safety Net Assistance		
New York State	\$139,532,540	\$81,695,159	\$57,837,381	\$288,712,517	\$123,578,116
New York City	94,143,000	53,500,000	40,643,000	192,761,505	81,786,250
Rest of State	45,389,540	28,195,159	17,194,381	95,951,012	41,791,866

Note: SSI data listed here do not include Mental Hygiene data. See Tables 17 - 19 for total SSI data.

Table 4
TEMPORARY ASSISTANCE
 Year to Year Monthly Comparison by Local District
 Cases, Recipients and Expenditures
 February 2002

Local District	February 2002			February 2001			February 2000		
	Cases	Recipients	Expenditures	Cases	Recipients	Expenditures	Cases	Recipients	Expenditures
New York State	306,103	640,131	\$139,539,540	337,989	724,063	\$152,871,157	384,074	836,346	\$ 170,729,485
New York City*	216,357	449,859	94,150,000	246,337	522,713	103,932,000	277,809	598,910	116,739,000
Rest of State	89,746	190,272	45,389,540	91,652	201,350	48,939,157	106,265	237,436	53,990,485
Albany	3,490	7,368	2,009,475	3,205	7,205	1,774,307	3,437	7,854	1,839,533
Allegany	484	1,090	175,703	499	1,146	194,360	615	1,438	234,203
Broome	2,029	4,326	959,873	1,999	4,334	925,059	2,377	5,435	1,047,861
Cattaraugus	649	1,357	265,072	600	1,295	255,874	714	1,518	274,397
Cayuga	400	845	170,352	419	923	199,364	431	968	184,105
Chautauqua	2,292	4,904	974,287	2,038	4,345	870,800	2,195	4,872	922,165
Chemung	934	2,058	397,969	828	1,884	360,489	967	2,278	361,222
Chenango	230	480	98,952	242	524	111,148	263	586	104,456
Clinton	636	1,159	298,673	547	1,052	228,693	604	1,194	245,383
Columbia	351	657	150,877	377	720	158,575	407	820	179,553
Cortland	445	905	207,812	410	900	182,253	431	998	222,372
Delaware	167	304	75,814	191	356	74,599	228	447	100,006
Dutchess	1,286	2,314	695,929	1,304	2,550	668,842	1,527	3,143	771,730
Erie	12,552	27,239	5,271,527	14,569	32,633	6,335,249	17,658	39,577	7,489,314
Essex	185	377	73,872	216	423	84,260	251	502	99,648
Franklin	314	604	123,238	305	630	122,582	379	718	143,074
Fulton	408	764	160,892	378	697	159,324	441	941	209,876
Genesee	281	558	124,695	281	614	119,987	280	610	115,553
Greene	424	831	201,717	394	784	180,533	423	886	172,393
Hamilton	14	19	3,757	11	20	3,131	15	22	7,047
Herkimer	338	710	135,689	318	647	128,490	393	883	166,891
Jefferson	1,001	2,080	440,476	1,053	2,157	480,664	1,232	2,625	507,878
Lewis	124	248	49,453	119	250	53,511	153	328	58,603
Livingston	592	1,096	269,880	526	1,003	231,456	476	1,010	220,925
Madison	166	292	71,084	181	328	77,718	185	340	80,126
Monroe	13,883	30,887	7,163,870	14,676	33,575	8,205,782	17,097	39,435	9,874,646
Montgomery	327	736	158,372	291	601	141,522	301	657	147,662
Nassau	4,202	8,317	2,435,737	4,453	9,087	2,431,069	5,333	10,951	3,115,790
Niagara	2,482	5,263	1,021,389	2,460	5,124	989,390	2,894	5,991	1,198,471
Oneida	2,248	5,378	1,127,672	2,331	5,835	1,155,981	2,802	7,030	1,368,900
Onondaga	6,133	13,484	2,713,474	5,586	12,718	2,611,777	6,214	14,374	2,773,631
Ontario	593	1,077	209,696	558	1,048	257,895	548	1,069	253,016
Orange	2,589	6,148	1,380,682	2,882	7,574	1,766,114	3,034	7,896	1,617,996
Orleans	512	1,122	227,800	486	1,104	213,318	474	1,105	203,300
Oswego	777	1,589	367,384	797	1,800	370,149	900	2,156	417,805
Otsego	128	208	64,129	104	185	62,790	112	210	56,500
Putnam	132	213	96,526	107	192	113,942	126	216	111,958
Rensselaer	1,278	2,789	577,639	1,137	2,461	605,022	1,329	2,980	602,951
Rockland	1,127	3,045	655,981	1,136	3,354	670,426	1,347	3,815	792,454
St.Lawrence	1,025	2,018	388,246	1,040	2,139	390,163	1,264	2,657	506,485
Saratoga	271	417	133,726	236	368	112,853	269	455	119,000
Schenectady	1,071	2,169	571,256	980	2,199	453,437	1,173	2,735	545,350
Schoharie	92	165	45,405	92	144	68,063	109	196	56,706
Schuyler	144	326	62,467	116	231	44,880	106	226	43,316
Seneca	154	313	64,643	186	367	72,176	179	364	73,849
Steuben	871	1,701	354,944	821	1,652	348,720	1,115	2,364	451,260
Suffolk	6,835	13,776	4,436,569	6,744	13,926	4,511,030	7,547	16,323	4,813,007
Sullivan	610	1,257	338,036	593	1,131	246,774	566	1,269	251,947
Tioga	337	706	148,365	279	576	116,420	336	738	133,746
Tompkins	667	1,267	343,459	678	1,316	346,168	698	1,372	316,727
Ulster	1,244	2,517	657,888	1,166	2,401	607,792	1,366	2,736	672,823
Warren	287	513	136,236	272	545	122,472	261	488	127,424
Washington	348	598	195,353	334	613	161,904	359	700	164,834
Wayne	519	937	233,301	461	874	203,725	577	1,248	254,547
Westchester	8,779	18,258	5,564,954	9,371	20,286	7,436,062	11,465	25,107	7,053,848
Wyoming	186	318	70,157	187	350	89,886	180	365	72,143
Yates	103	175	37,116	82	154	30,187	102	215	40,079

* Expenditures partially estimated.

Table 5
TEMPORARY ASSISTANCE
Cases, Recipients, Children, Adults and Expenditures by Local District
February 2002

Local District	Temporary Assistance				
	Cases	Recipients	Children	Adults	Expenditures
New York State	306,103	640,131	375,241	264,890	\$139,532,540
New York City*	216,357	449,859	259,020	190,839	94,143,000
Rest of State	89,746	190,272	116,221	74,051	45,389,540
Albany	3,490	7,368	4,350	3,018	2,009,475
Allegany	484	1,090	662	428	175,703
Broome	2,029	4,326	2,652	1,674	959,873
Cattaraugus	649	1,357	808	549	265,072
Cayuga	400	845	549	296	170,352
Chautauqua	2,292	4,904	2,874	2,030	974,287
Chemung	934	2,058	1,304	754	397,969
Chenango	230	480	310	170	98,952
Clinton	636	1,159	652	507	298,673
Columbia	351	657	402	255	150,877
Cortland	445	905	499	406	207,812
Delaware	167	304	197	107	75,814
Dutchess	1,286	2,314	1,418	896	695,929
Erie	12,552	27,239	16,636	10,603	5,271,527
Essex	185	377	217	160	73,872
Franklin	314	604	357	247	123,238
Fulton	408	764	426	338	160,892
Genesee	281	558	337	221	124,695
Greene	424	831	458	373	201,717
Hamilton	14	19	7	12	3,757
Herkimer	338	710	450	260	135,689
Jefferson	1,001	2,080	1,168	912	440,476
Lewis	124	248	155	93	49,453
Livingston	592	1,096	535	561	269,880
Madison	166	292	209	83	71,084
Monroe	13,883	30,887	19,235	11,652	7,163,870
Montgomery	327	736	444	292	158,372
Nassau	4,202	8,317	5,339	2,978	2,435,737
Niagara	2,482	5,263	3,122	2,141	1,021,389
Oneida	2,248	5,378	3,458	1,920	1,127,672
Onondaga	6,133	13,484	8,490	4,994	2,713,474
Ontario	593	1,077	583	494	209,696
Orange	2,589	6,148	4,078	2,070	1,380,682
Orleans	512	1,122	634	488	227,800
Oswego	777	1,589	1,009	580	367,384
Otsego	128	208	131	77	64,129
Putnam	132	213	114	99	96,526
Rensselaer	1,278	2,789	1,686	1,103	577,639
Rockland	1,127	3,045	2,037	1,008	655,981
St.Lawrence	1,025	2,018	1,133	885	388,246
Saratoga	271	417	293	124	133,726
Schenectady	1,071	2,169	1,449	720	571,256
Schoharie	92	165	107	58	45,405
Schuyler	144	326	193	133	62,467
Seneca	154	313	191	122	64,643
Steuben	871	1,701	939	762	354,944
Suffolk	6,835	13,776	8,327	5,449	4,436,569
Sullivan	610	1,257	793	464	338,036
Tioga	337	706	436	270	148,365
Tompkins	667	1,267	688	579	343,459
Ulster	1,244	2,517	1,611	906	657,888
Warren	287	513	273	240	136,236
Washington	348	598	337	261	195,353
Wayne	519	937	558	379	233,301
Westchester	8,779	18,258	10,641	7,617	5,564,954
Wyoming	186	318	172	146	70,157
Yates	103	175	88	87	37,116

* Expenditures partially estimated.

Table 6
FAMILY ASSISTANCE
Cases, Recipients, Children, Adults and Expenditures by Local District
February 2002

Local District	Family Assistance				
	Cases	Recipients	Children	Adults	Expenditures
New York State	160,537	389,863	278,346	111,517	\$81,695,159
New York City*	107,258	256,459	182,167	74,292	53,500,000
Rest of State	53,279	133,404	96,179	37,225	28,195,159
Albany	2,218	5,599	3,870	1,729	1,329,368
Allegany	335	859	590	269	123,883
Broome	1,283	3,249	2,334	915	603,185
Cattaraugus	422	1,061	750	311	186,053
Cayuga	300	703	507	196	126,814
Chautauqua	1,477	3,758	2,551	1,207	685,436
Chemung	676	1,707	1,207	500	283,758
Chenango	173	412	300	112	70,596
Clinton	386	875	609	266	170,541
Columbia	244	531	382	149	104,081
Cortland	279	704	463	241	140,896
Delaware	109	239	190	49	45,655
Dutchess	750	1,637	1,250	387	455,305
Erie	7,168	18,285	13,194	5,091	3,230,845
Essex	125	306	203	103	49,254
Franklin	209	456	321	135	84,232
Fulton	267	611	421	190	101,686
Genesee	164	424	314	110	72,866
Greene	279	660	434	226	138,147
Hamilton	7	12	7	5	2,033
Herkimer	255	613	430	183	104,580
Jefferson	578	1,493	1,017	476	270,293
Lewis	84	197	142	55	36,069
Livingston	339	789	485	304	159,685
Madison	125	249	203	46	55,206
Monroe	7,344	19,281	14,159	5,122	4,005,051
Montgomery	218	618	437	181	108,289
Nassau	2,566	5,870	4,527	1,343	1,579,843
Niagara	1,519	3,681	2,510	1,171	630,209
Oneida	1,445	4,107	2,997	1,110	779,093
Onondaga	4,046	10,573	7,617	2,956	1,890,370
Ontario	332	750	521	229	133,027
Orange	1,703	4,443	3,286	1,157	947,604
Orleans	322	830	538	292	155,158
Oswego	560	1,314	950	364	250,095
Otsego	75	146	123	23	30,908
Putnam	69	146	106	40	58,024
Rensselaer	884	2,264	1,563	701	387,280
Rockland	577	1,696	1,330	366	332,540
St. Lawrence	646	1,494	985	509	258,148
Saratoga	174	312	277	35	69,590
Schenectady	721	1,669	1,289	380	360,749
Schoharie	59	129	105	24	25,262
Schuyler	100	274	187	87	45,552
Seneca	95	222	156	66	41,954
Steuben	508	1,235	841	394	215,294
Suffolk	3,570	9,038	6,835	2,203	2,825,114
Sullivan	433	1,039	756	283	252,796
Tioga	246	584	407	177	110,692
Tompkins	379	904	616	288	182,779
Ulster	871	1,996	1,459	537	471,911
Warren	160	365	254	111	82,113
Washington	209	434	304	130	102,940
Wayne	303	696	525	171	148,032
Westchester	4,729	11,507	8,098	3,409	3,019,825
Wyoming	110	236	163	73	44,329
Yates	54	122	84	38	20,121

* Expenditures partially estimated.

Table 7
SAFETY NET ASSISTANCE
Cases, Recipients, Children, Adults and Expenditures by Local District
February 2002

Local District	Safety Net Assistance				
	Cases	Recipients	Children	Adults	Expenditures
New York State	145,566	250,268	96,895	153,373	\$57,837,381
New York City*	109,099	193,400	76,853	116,547	40,643,000
Rest of State	36,467	56,868	20,042	36,826	17,194,381
Albany	1,272	1,769	480	1,289	680,107
Allegany	149	231	72	159	51,820
Broome	746	1,077	318	759	356,688
Cattaraugus	227	296	58	238	79,019
Cayuga	100	142	42	100	43,538
Chautauqua	815	1,146	323	823	288,851
Chemung	258	351	97	254	114,211
Chenango	57	68	10	58	28,356
Clinton	250	284	43	241	128,132
Columbia	107	126	20	106	46,796
Cortland	166	201	36	165	66,916
Delaware	58	65	7	58	30,159
Dutchess	536	677	168	509	240,624
Erie	5,384	8,954	3,442	5,512	2,040,682
Essex	60	71	14	57	24,618
Franklin	105	148	36	112	39,006
Fulton	141	153	5	148	59,206
Genesee	117	134	23	111	51,829
Greene	145	171	24	147	63,570
Hamilton	7	7	0	7	1,724
Herkimer	83	97	20	77	31,109
Jefferson	423	587	151	436	170,183
Lewis	40	51	13	38	13,384
Livingston	253	307	50	257	110,195
Madison	41	43	6	37	15,878
Monroe	6,539	11,606	5,076	6,530	3,158,819
Montgomery	109	118	7	111	50,083
Nassau	1,636	2,447	812	1,635	855,894
Niagara	963	1,582	612	970	391,180
Oneida	803	1,271	461	810	348,579
Onondaga	2,087	2,911	873	2,038	823,104
Ontario	261	327	62	265	76,669
Orange	886	1,705	792	913	433,078
Orleans	190	292	96	196	72,642
Oswego	217	275	59	216	117,289
Otsego	53	62	8	54	33,221
Putnam	63	67	8	59	38,502
Rensselaer	394	525	123	402	190,359
Rockland	550	1,349	707	642	323,441
St.Lawrence	379	524	148	376	130,098
Saratoga	97	105	16	89	64,136
Schenectady	350	500	160	340	210,507
Schoharie	33	36	2	34	20,143
Schuyler	44	52	6	46	16,915
Seneca	59	91	35	56	22,689
Steuben	363	466	98	368	139,650
Suffolk	3,265	4,738	1,492	3,246	1,611,455
Sullivan	177	218	37	181	85,240
Tioga	91	122	29	93	37,673
Tompkins	288	363	72	291	160,680
Ulster	373	521	152	369	185,977
Warren	127	148	19	129	54,123
Washington	139	164	33	131	92,413
Wayne	216	241	33	208	85,269
Westchester	4,050	6,751	2,543	4,208	2,545,129
Wyoming	76	82	9	73	25,828
Yates	49	53	4	49	16,995

* Expenditures partially estimated.

Table 8
 TEMPORARY ASSISTANCE BY FUNDING SOURCE
 Cases, Recipients and Expenditures by Local District
 February 2002

Local District	Total			Federally Participating - TANF Family Assistance and Safety Net - FP			Federally Non-Participating Safety Net Assistance - FNP		
	Cases	Recipients	Expenditures	Cases	Recipients	Expenditures	Cases	Recipients	Expenditures
New York State	306,103	640,131	\$139,532,540	162,091	393,934	\$82,583,305	144,012	246,197	\$56,949,235
New York City*	216,357	449,859	94,143,000	107,392	256,755	53,534,000	108,965	193,104	40,609,000
Rest of State	89,746	190,272	45,389,540	54,699	137,179	29,049,305	35,047	53,093	16,340,235
Albany	3,490	7,368	2,009,475	2,246	5,674	1,344,682	1,244	1,694	664,793
Allegany	484	1,090	175,703	336	863	124,364	148	227	51,339
Broome	2,029	4,326	959,873	1,313	3,318	617,050	716	1,008	342,823
Cattaraugus	649	1,357	265,072	433	1,091	189,922	216	266	75,150
Cayuga	400	845	170,352	307	717	131,196	93	128	39,156
Chautauqua	2,292	4,904	974,287	1,506	3,833	699,826	786	1,071	274,461
Chemung	934	2,058	397,969	681	1,720	291,322	253	338	106,647
Chenango	230	480	98,952	173	412	70,596	57	68	28,356
Clinton	636	1,159	298,673	395	893	174,663	241	266	124,010
Columbia	351	657	150,877	245	534	104,572	106	123	46,305
Cortland	445	905	207,812	285	719	143,931	160	186	63,881
Delaware	167	304	75,814	111	244	47,061	56	60	28,753
Dutchess	1,286	2,314	695,929	775	1,686	477,115	511	628	218,814
Erie	12,552	27,239	5,271,527	7,451	19,070	3,358,803	5,101	8,169	1,912,724
Essex	185	377	73,872	127	309	51,990	58	68	21,882
Franklin	314	604	123,238	210	457	85,262	104	147	37,976
Fulton	408	764	160,892	269	617	102,443	139	147	58,449
Genesee	281	558	124,695	169	437	76,154	112	121	48,541
Greene	424	831	201,717	281	662	143,334	143	169	58,383
Hamilton	14	19	3,757	7	12	2,033	7	7	1,724
Herkimer	338	710	135,689	257	618	104,992	81	92	30,697
Jefferson	1,001	2,080	440,476	598	1,552	278,426	403	528	162,050
Lewis	124	248	49,453	84	197	36,069	40	51	13,384
Livingston	592	1,096	269,880	358	836	169,299	234	260	100,581
Madison	166	292	71,084	125	249	55,206	41	43	15,878
Monroe	13,883	30,887	7,163,870	7,818	20,544	4,297,238	6,065	10,343	2,866,632
Montgomery	327	736	158,372	218	618	108,289	109	118	50,083
Nassau	4,202	8,317	2,435,737	2,596	5,943	1,601,770	1,606	2,374	833,967
Niagara	2,482	5,263	1,021,389	1,563	3,812	649,825	919	1,451	371,564
Oneida	2,248	5,378	1,127,672	1,474	4,193	795,446	774	1,185	332,226
Onondaga	6,133	13,484	2,713,474	4,067	10,625	1,901,139	2,066	2,859	812,335
Ontario	593	1,077	209,696	338	770	137,095	255	307	72,601
Orange	2,589	6,148	1,380,682	1,725	4,501	964,361	864	1,647	416,321
Orleans	512	1,122	227,800	327	842	157,658	185	280	70,142
Oswego	777	1,589	367,384	570	1,339	254,791	207	250	112,593
Otsego	128	208	64,129	79	152	33,063	49	56	31,066
Putnam	132	213	96,526	70	148	61,392	62	65	35,134
Rensselaer	1,278	2,789	577,639	894	2,299	394,796	384	490	182,843
Rockland	1,127	3,045	655,981	592	1,737	341,105	535	1,308	314,876
St. Lawrence	1,025	2,018	388,246	647	1,496	258,460	378	522	129,786
Saratoga	271	417	133,726	174	312	69,590	97	105	64,136
Schenectady	1,071	2,169	571,256	735	1,706	373,585	336	463	197,671
Schoharie	92	165	45,405	59	129	25,262	33	36	20,143
Schuyler	144	326	62,467	100	274	45,552	44	52	16,915
Seneca	154	313	64,643	96	224	42,782	58	89	21,861
Steuben	871	1,701	354,944	514	1,249	217,729	357	452	137,215
Suffolk	6,835	13,776	4,436,569	3,649	9,260	2,887,932	3,186	4,516	1,548,637
Sullivan	610	1,257	338,036	436	1,047	256,499	174	210	81,537
Tioga	337	706	148,365	249	591	112,857	88	115	35,508
Tompkins	667	1,267	343,459	397	948	192,236	270	319	151,223
Ulster	1,244	2,517	657,888	913	2,105	501,221	331	412	156,667
Warren	287	513	136,236	162	373	83,085	125	140	53,151
Washington	348	598	195,353	213	444	104,153	135	154	91,200
Wayne	519	937	233,301	307	710	149,951	212	227	83,350
Westchester	8,779	18,258	5,564,954	4,807	11,700	3,084,466	3,972	6,558	2,480,488
Wyoming	186	318	70,157	114	246	45,545	72	72	24,612
Yates	103	175	37,116	54	122	20,121	49	53	16,995

* Expenditures partially estimated.

Table 9
 TEMPORARY ASSISTANCE TO NEEDY FAMILIES (TANF) - FP BY PROGRAM
 Cases, Recipients, Children, Adults and Expenditures by Local District
 February 2002

Local District	Family Assistance					Safety Net Assistance - FP				
	Cases	Recipients	Children	Adults	Expenditures	Cases	Recipients	Children	Adults	Expenditures
New York State	160,537	389,863	278,346	111,517	\$81,695,159	1,554	4,071	2,424	1,647	\$888,146
New York City*	107,258	256,459	182,167	74,292	53,500,000	134	296	153	143	34,000
Rest of State	53,279	133,404	96,179	37,225	28,195,159	1,420	3,775	2,271	1,504	854,146
Albany	2,218	5,599	3,870	1,729	1,329,368	28	75	43	32	15,314
Allegany	335	859	590	269	123,883	1	4	2	2	481
Broome	1,283	3,249	2,334	915	603,185	30	69	32	37	13,865
Cattaraugus	422	1,061	750	311	186,053	11	30	16	14	3,869
Cayuga	300	703	507	196	126,814	7	14	8	6	4,382
Chautauqua	1,477	3,758	2,551	1,207	685,436	29	75	47	28	14,390
Chemung	676	1,707	1,207	500	283,758	5	13	10	3	7,564
Chenango	173	412	300	112	70,596	0	0	0	0	0
Clinton	386	875	609	266	170,541	9	18	10	8	4,122
Columbia	244	531	382	149	104,081	1	3	2	1	491
Cortland	279	704	463	241	140,896	6	15	8	7	3,035
Delaware	109	239	190	49	45,655	2	5	3	2	1,406
Dutchess	750	1,637	1,250	387	455,305	25	49	26	23	21,810
Erie	7,168	18,285	13,194	5,091	3,230,845	283	785	457	328	127,958
Essex	125	306	203	103	49,254	2	3	1	2	2,736
Franklin	209	456	321	135	84,232	1	1	0	1	1,030
Fulton	267	611	421	190	101,686	2	6	4	2	757
Genesee	164	424	314	110	72,866	5	13	7	6	3,288
Greene	279	660	434	226	138,147	2	2	0	2	5,187
Hamilton	7	12	7	5	2,033	0	0	0	0	0
Herkimer	255	613	430	183	104,580	2	5	2	3	412
Jefferson	578	1,493	1,017	476	270,293	20	59	32	27	8,133
Lewis	84	197	142	55	36,069	0	0	0	0	0
Livingston	339	789	485	304	159,685	19	47	27	20	9,614
Madison	125	249	203	46	55,206	0	0	0	0	0
Monroe	7,344	19,281	14,159	5,122	4,005,051	474	1,263	812	451	292,187
Montgomery	218	618	437	181	108,289	0	0	0	0	0
Nassau	2,566	5,870	4,527	1,343	1,579,843	30	73	43	30	21,927
Niagara	1,519	3,681	2,510	1,171	630,209	44	131	79	52	19,616
Oneida	1,445	4,107	2,997	1,110	779,093	29	86	53	33	16,353
Onondaga	4,046	10,573	7,617	2,956	1,890,370	21	52	27	25	10,769
Ontario	332	750	521	229	133,027	6	20	12	8	4,068
Orange	1,703	4,443	3,286	1,157	947,604	22	58	33	25	16,757
Orleans	322	830	538	292	155,158	5	12	5	7	2,500
Oswego	560	1,314	950	364	250,095	10	25	14	11	4,696
Otsego	75	146	123	23	30,908	4	6	2	4	2,155
Putnam	69	146	106	40	58,024	1	2	1	1	3,368
Rensselaer	884	2,264	1,563	701	387,280	10	35	26	9	7,516
Rockland	577	1,696	1,330	366	332,540	15	41	25	16	8,565
St.Lawrence	646	1,494	985	509	258,148	1	2	1	1	312
Saratoga	174	312	277	35	69,590	0	0	0	0	0
Schenectady	721	1,669	1,289	380	360,749	14	37	23	14	12,836
Schoharie	59	129	105	24	25,262	0	0	0	0	0
Schuyler	100	274	187	87	45,552	0	0	0	0	0
Seneca	95	222	156	66	41,954	1	2	1	1	828
Steuben	508	1,235	841	394	215,294	6	14	8	6	2,435
Suffolk	3,570	9,038	6,835	2,203	2,825,114	79	222	132	90	62,818
Sullivan	433	1,039	756	283	252,796	3	8	4	4	3,703
Tioga	246	584	407	177	110,692	3	7	3	4	2,165
Tompkins	379	904	616	288	182,779	18	44	26	18	9,457
Ulster	871	1,996	1,459	537	471,911	42	109	62	47	29,310
Warren	160	365	254	111	82,113	2	8	6	2	972
Washington	209	434	304	130	102,940	4	10	6	4	1,213
Wayne	303	696	525	171	148,032	4	14	9	5	1,919
Westchester	4,729	11,507	8,098	3,409	3,019,825	78	193	114	79	64,641
Wyoming	110	236	163	73	44,329	4	10	7	3	1,216
Yates	54	122	84	38	20,121	0	0	0	0	0

* Expenditures partially estimated.

Table 10
SAFETY NET ASSISTANCE - FNP
Cases, Recipients, Children, Adults and Expenditures by Local District
February 2002

Local District	Safety Net Assistance - FNP				
	Cases	Recipients	Children	Adults	Expenditures
New York State	144,012	246,197	94,471	151,726	\$56,949,235
New York City*	108,965	193,104	76,700	116,404	40,609,000
Rest of State	35,047	53,093	17,771	35,322	16,340,235
Albany	1,244	1,694	437	1,257	664,793
Allegany	148	227	70	157	51,339
Broome	716	1,008	286	722	342,823
Cattaraugus	216	266	42	224	75,150
Cayuga	93	128	34	94	39,156
Chautauqua	786	1,071	276	795	274,461
Chemung	253	338	87	251	106,647
Chenango	57	68	10	58	28,356
Clinton	241	266	33	233	124,010
Columbia	106	123	18	105	46,305
Cortland	160	186	28	158	63,881
Delaware	56	60	4	56	28,753
Dutchess	511	628	142	486	218,814
Erie	5,101	8,169	2,985	5,184	1,912,724
Essex	58	68	13	55	21,882
Franklin	104	147	36	111	37,976
Fulton	139	147	1	146	58,449
Genesee	112	121	16	105	48,541
Greene	143	169	24	145	58,383
Hamilton	7	7	0	7	1,724
Herkimer	81	92	18	74	30,697
Jefferson	403	528	119	409	162,050
Lewis	40	51	13	38	13,384
Livingston	234	260	23	237	100,581
Madison	41	43	6	37	15,878
Monroe	6,065	10,343	4,264	6,079	2,866,632
Montgomery	109	118	7	111	50,083
Nassau	1,606	2,374	769	1,605	833,967
Niagara	919	1,451	533	918	371,564
Oneida	774	1,185	408	777	332,226
Onondaga	2,066	2,859	846	2,013	812,335
Ontario	255	307	50	257	72,601
Orange	864	1,647	759	888	416,321
Orleans	185	280	91	189	70,142
Oswego	207	250	45	205	112,593
Otsego	49	56	6	50	31,066
Putnam	62	65	7	58	35,134
Rensselaer	384	490	97	393	182,843
Rockland	535	1,308	682	626	314,876
St.Lawrence	378	522	147	375	129,786
Saratoga	97	105	16	89	64,136
Schenectady	336	463	137	326	197,671
Schoharie	33	36	2	34	20,143
Schuyler	44	52	6	46	16,915
Seneca	58	89	34	55	21,861
Steuben	357	452	90	362	137,215
Suffolk	3,186	4,516	1,360	3,156	1,548,637
Sullivan	174	210	33	177	81,537
Tioga	88	115	26	89	35,508
Tompkins	270	319	46	273	151,223
Ulster	331	412	90	322	156,667
Warren	125	140	13	127	53,151
Washington	135	154	27	127	91,200
Wayne	212	227	24	203	83,350
Westchester	3,972	6,558	2,429	4,129	2,480,488
Wyoming	72	72	2	70	24,612
Yates	49	53	4	49	16,995

* Expenditures partially estimated.

Table 11
SAFETY NET ASSISTANCE - FNP BY CASE CATEGORY
(Maintenance of Effort (MOE) vs. Non-Maintenance of Effort (Non-MOE))
Cases, Recipients, Children, Adults and Expenditures by Local District
February 2002

Local District	Maintenance of Effort (MOE)					Non-Maintenance of Effort (Non-MOE)				
	Cases	Recipients	Children	Adults	Expenditures	Cases	Recipients	Children	Adults	Expenditures
New York State	37,844	129,799	87,232	42,567	\$18,715,091	106,168	116,398	7,239	109,159	\$38,234,144
New York City*	32,677	109,353	72,468	36,885	15,784,000	76,288	83,751	4,232	79,519	24,825,000
Rest of State	5,167	20,446	14,764	5,682	2,931,091	29,880	32,647	3,007	29,640	13,409,144
Albany	116	469	345	124	69,630	1,128	1,225	92	1,133	595,163
Allegany	25	94	65	29	8,636	123	133	5	128	42,703
Broome	79	322	230	92	36,009	637	686	56	630	306,814
Cattaraugus	9	32	20	12	2,734	207	234	22	212	72,416
Cayuga	9	41	30	11	5,963	84	87	4	83	33,193
Chautauqua	82	298	217	81	37,840	704	773	59	714	236,621
Chemung	16	79	58	21	6,653	237	259	29	230	99,994
Chenango	2	9	6	3	1,275	55	59	4	55	27,081
Clinton	8	24	16	8	2,592	233	242	17	225	121,418
Columbia	4	17	13	4	1,540	102	106	5	101	44,765
Cortland	8	30	21	9	3,856	152	156	7	149	60,025
Delaware	0	0	0	0	0	56	60	4	56	28,753
Dutchess	26	95	69	26	12,336	485	533	73	460	206,478
Erie	926	3,625	2,625	1,000	379,219	4,175	4,544	360	4,184	1,533,505
Essex	3	13	10	3	1,582	55	55	3	52	20,300
Franklin	15	48	32	16	5,753	89	99	4	95	32,223
Fulton	0	0	0	0	0	139	147	1	146	58,449
Genesee	2	6	5	1	712	110	115	11	104	47,829
Greene	2	8	6	2	681	141	161	18	143	57,702
Hamilton	0	0	0	0	0	7	7	0	7	1,724
Herkimer	1	6	5	1	23	80	86	13	73	30,674
Jefferson	37	136	94	42	19,225	366	392	25	367	142,825
Lewis	2	8	5	3	1,053	38	43	8	35	12,331
Livingston	9	25	15	10	3,336	225	235	8	227	97,245
Madison	1	2	1	1	452	40	41	5	36	15,426
Monroe	1,344	5,210	3,805	1,405	784,799	4,721	5,133	459	4,674	2,081,833
Montgomery	1	4	3	1	349	108	114	4	110	49,734
Nassau	232	849	605	244	132,899	1,374	1,525	164	1,361	701,068
Niagara	162	629	452	177	69,199	757	822	81	741	302,365
Oneida	112	456	333	123	49,761	662	729	75	654	282,465
Onondaga	199	818	608	210	103,152	1,867	2,041	238	1,803	709,183
Ontario	14	52	36	16	5,044	241	255	14	241	67,557
Orange	165	882	665	217	95,698	699	765	94	671	320,623
Orleans	8	32	23	9	5,785	177	248	68	180	64,357
Oswego	11	41	29	12	4,333	196	209	16	193	108,260
Otsego	1	7	5	2	506	48	49	1	48	30,560
Putnam	0	0	0	0	0	62	65	7	58	35,134
Rensselaer	25	100	74	26	10,700	359	390	23	367	172,143
Rockland	107	692	515	177	65,724	428	616	167	449	249,152
St. Lawrence	45	170	121	49	17,541	333	352	26	326	112,245
Saratoga	2	7	5	2	1,054	95	98	11	87	63,082
Schenectady	23	96	70	26	11,482	313	367	67	300	186,189
Schoharie	0	0	0	0	0	33	36	2	34	20,143
Schuyler	0	0	0	0	0	44	52	6	46	16,915
Seneca	8	36	28	8	3,115	50	53	6	47	18,746
Steuben	24	92	65	27	9,527	333	360	25	335	127,688
Suffolk	397	1,563	1,131	432	365,901	2,789	2,953	229	2,724	1,182,736
Sullivan	9	35	25	10	3,943	165	175	8	167	77,594
Tioga	11	34	22	12	4,620	77	81	4	77	30,888
Tompkins	11	38	26	12	5,474	259	281	20	261	145,749
Ulster	23	85	59	26	12,870	308	327	31	296	143,797
Warren	1	2	1	1	468	124	138	12	126	52,683
Washington	3	13	10	3	1,298	132	141	17	124	89,902
Wayne	0	0	0	0	0	212	227	24	203	83,350
Westchester	846	3,115	2,160	955	564,513	3,126	3,443	269	3,174	1,915,975
Wyoming	1	1	0	1	236	71	71	2	69	24,376
Yates	0	0	0	0	0	49	53	4	49	16,995

* Expenditures partially estimated.

Table 12
SAFETY NET ASSISTANCE - FNP - CASH TOTAL
Cases, Recipients, Children, Adults and Expenditures by Local District
February 2002

Local District	Safety Net Assistance - FNP - Cash Total				
	Cases	Recipients	Children	Adults	Expenditures
New York State	See Note	See Note	See Note	See Note	See Note
New York City	See Note	See Note	See Note	See Note	See Note
Rest of State	20,526	23,124	2,717	20,407	\$9,006,133
Albany	909	1,026	113	913	450,421
Allegany	104	114	5	109	32,549
Broome	445	500	62	438	188,815
Cattaraugus	168	192	18	174	60,411
Cayuga	69	77	8	69	26,551
Chautauqua	542	594	41	553	185,874
Chemung	189	201	13	188	71,140
Chenango	42	43	0	43	20,094
Clinton	190	193	9	184	93,627
Columbia	91	94	3	91	36,207
Cortland	113	124	12	112	39,872
Delaware	47	50	3	47	21,036
Dutchess	248	287	54	233	105,264
Erie	2,326	2,652	326	2,326	867,227
Essex	47	47	1	46	16,585
Franklin	72	77	1	76	26,515
Fulton	103	111	1	110	46,304
Genesee	81	84	7	77	30,088
Greene	116	122	1	121	43,266
Hamilton	7	7	0	7	1,724
Herkimer	63	65	9	56	20,417
Jefferson	252	276	23	253	88,006
Lewis	28	30	3	27	5,982
Livingston	177	187	8	179	74,714
Madison	40	42	6	36	14,928
Monroe	2,637	3,123	525	2,598	1,135,955
Montgomery	82	85	1	84	36,990
Nassau	1,029	1,095	59	1,036	477,626
Niagara	451	473	42	431	157,652
Oneida	510	599	89	510	186,383
Onondaga	1,596	1,816	260	1,556	599,858
Ontario	178	187	9	178	53,582
Orange	465	534	68	466	182,943
Orleans	144	162	17	145	51,835
Oswego	157	171	16	155	83,619
Otsego	37	38	1	37	21,730
Putnam	39	41	3	38	19,113
Rensselaer	266	293	20	273	111,982
Rockland	200	258	55	203	123,789
St.Lawrence	267	276	15	261	82,118
Saratoga	80	88	15	73	42,841
Schenectady	213	247	47	200	104,943
Schoharie	24	27	2	25	12,152
Schuyler	37	45	6	39	12,444
Seneca	31	32	2	30	9,274
Steuben	273	296	20	276	100,398
Suffolk	2,198	2,440	275	2,165	1,001,039
Sullivan	132	152	18	134	54,822
Tioga	69	72	2	70	22,976
Tompkins	158	185	24	161	87,990
Ulster	198	203	15	188	84,072
Warren	107	116	6	110	39,806
Washington	112	120	13	107	74,069
Wayne	159	167	17	150	56,549
Westchester	2,101	2,477	342	2,135	1,374,698
Wyoming	62	62	2	60	19,479
Yates	45	49	4	45	15,789

Note: A breakout of Safety Net Assistance - FNP - Cash and Safety Net Assistance - FNP - Non-Cash data is not available for New York City.

Table 13
SAFETY NET ASSISTANCE - FNP - CASH BY CASE CATEGORY
(Maintenance of Effort (MOE) vs. Non-Maintenance of Effort (Non-MOE))
Cases, Recipients, Children, Adults and Expenditures by Local District
February 2002

Local District	Maintenance of Effort (MOE)					Non-Maintenance of Effort (Non-MOE)				
	Cases	Recipients	Children	Adults	Expenditures	Cases	Recipients	Children	Adults	Expenditures
New York State	See Note	See Note	See Note	See Note	See Note	See Note	See Note	See Note	See Note	See Note
New York City	See Note	See Note	See Note	See Note	See Note	See Note	See Note	See Note	See Note	See Note
Rest of State	596	1,962	1,285	677	\$365,098	19,930	21,162	1,432	19,730	\$8,641,035
Albany	29	114	81	33	18,296	880	912	32	880	432,125
Allegany	3	6	2	4	768	101	108	3	105	31,781
Broome	9	24	14	10	3,984	436	476	48	428	184,831
Cattaraugus	1	5	3	2	397	167	187	15	172	60,014
Cayuga	2	9	7	2	1,813	67	68	1	67	24,738
Chautauqua	4	13	9	4	1,489	538	581	32	549	184,385
Chemung	1	4	3	1	554	188	197	10	187	70,586
Chenango	0	0	0	0	0	42	43	0	43	20,094
Clinton	0	0	0	0	0	190	193	9	184	93,627
Columbia	0	0	0	0	0	91	94	3	91	36,207
Cortland	2	11	8	3	1,436	111	113	4	109	38,436
Delaware	0	0	0	0	0	47	50	3	47	21,036
Dutchess	4	14	10	4	1,702	244	273	44	229	103,562
Erie	84	272	178	94	35,264	2,242	2,380	148	2,232	831,963
Essex	0	0	0	0	0	47	47	1	46	16,585
Franklin	1	2	1	1	111	71	75	0	75	26,404
Fulton	0	0	0	0	0	103	111	1	110	46,304
Genesee	0	0	0	0	0	81	84	7	77	30,088
Greene	0	0	0	0	0	116	122	1	121	43,266
Hamilton	0	0	0	0	0	7	7	0	7	1,724
Herkimer	0	0	0	0	0	63	65	9	56	20,417
Jefferson	3	12	9	3	1,438	249	264	14	250	86,568
Lewis	0	0	0	0	0	28	30	3	27	5,982
Livingston	2	3	1	2	926	175	184	7	177	73,788
Madison	1	2	1	1	452	39	40	5	35	14,476
Monroe	144	455	293	162	87,070	2,493	2,668	232	2,436	1,048,885
Montgomery	0	0	0	0	0	82	85	1	84	36,990
Nassau	11	21	8	13	4,669	1,018	1,074	51	1,023	472,957
Niagara	6	14	8	6	1,667	445	459	34	425	155,985
Oneida	20	68	45	23	8,731	490	531	44	487	177,652
Onondaga	47	179	126	53	26,640	1,549	1,637	134	1,503	573,218
Ontario	0	0	0	0	0	178	187	9	178	53,582
Orange	18	64	46	18	10,054	447	470	22	448	172,889
Orleans	4	12	8	4	3,320	140	150	9	141	48,515
Oswego	3	8	5	3	1,054	154	163	11	152	82,565
Otsego	0	0	0	0	0	37	38	1	37	21,730
Putnam	0	0	0	0	0	39	41	3	38	19,113
Rensselaer	3	12	9	3	1,169	263	281	11	270	110,813
Rockland	11	43	31	12	10,517	189	215	24	191	113,272
St.Lawrence	1	4	2	2	5	266	272	13	259	82,113
Saratoga	2	7	5	2	1,054	78	81	10	71	41,787
Schenectady	3	8	5	3	2,064	210	239	42	197	102,879
Schoharie	0	0	0	0	0	24	27	2	25	12,152
Schuyler	0	0	0	0	0	37	45	6	39	12,444
Seneca	0	0	0	0	0	31	32	2	30	9,274
Steuben	3	9	5	4	1,253	270	287	15	272	99,145
Suffolk	46	160	104	56	68,365	2,152	2,280	171	2,109	932,674
Sullivan	4	15	10	5	1,863	128	137	8	129	52,959
Tioga	2	2	0	2	479	67	70	2	68	22,497
Tompkins	3	11	7	4	1,994	155	174	17	157	85,996
Ulster	0	0	0	0	0	198	203	15	188	84,072
Warren	0	0	0	0	0	107	116	6	110	39,806
Washington	0	0	0	0	0	112	120	13	107	74,069
Wayne	0	0	0	0	0	159	167	17	150	56,549
Westchester	118	378	241	137	64,264	1,983	2,099	101	1,998	1,310,434
Wyoming	1	1	0	1	236	61	61	2	59	19,243
Yates	0	0	0	0	0	45	49	4	45	15,789

Note: Data from New York City does not allow the separation of Safety Net - FNP - Cash and Safety Net - FNP - Non-Cash data.

Table 14
SAFETY NET ASSISTANCE - FNP - NON-CASH TOTAL
Cases, Recipients, Children, Adults and Expenditures by Local District
February 2002

Local District	Safety Net Assistance - FNP - Non-Cash Total				
	Cases	Recipients	Children	Adults	Expenditures
New York State	See Note	See Note	See Note	See Note	See Note
New York City	See Note	See Note	See Note	See Note	See Note
Rest of State	14,521	29,969	15,054	14,915	\$7,334,102
Albany	335	668	324	344	214,372
Allegany	44	113	65	48	18,790
Broome	271	508	224	284	154,008
Cattaraugus	48	74	24	50	14,739
Cayuga	24	51	26	25	12,605
Chautauqua	244	477	235	242	88,587
Chemung	64	137	74	63	35,507
Chenango	15	25	10	15	8,262
Clinton	51	73	24	49	30,383
Columbia	15	29	15	14	10,098
Cortland	47	62	16	46	24,009
Delaware	9	10	1	9	7,717
Dutchess	263	341	88	253	113,550
Erie	2,775	5,517	2,659	2,858	1,045,497
Essex	11	21	12	9	5,297
Franklin	32	70	35	35	11,461
Fulton	36	36	0	36	12,145
Genesee	31	37	9	28	18,453
Greene	27	47	23	24	15,117
Hamilton	0	0	0	0	0
Herkimer	18	27	9	18	10,280
Jefferson	151	252	96	156	74,044
Lewis	12	21	10	11	7,402
Livingston	57	73	15	58	25,867
Madison	1	1	0	1	950
Monroe	3,428	7,220	3,739	3,481	1,730,677
Montgomery	27	33	6	27	13,093
Nassau	577	1,279	710	569	356,341
Niagara	468	978	491	487	213,912
Oneida	264	586	319	267	145,843
Onondaga	470	1,043	586	457	212,477
Ontario	77	120	41	79	19,019
Orange	399	1,113	691	422	233,378
Orleans	41	118	74	44	18,307
Oswego	50	79	29	50	28,974
Otsego	12	18	5	13	9,336
Putnam	23	24	4	20	16,021
Rensselaer	118	197	77	120	70,861
Rockland	335	1,050	627	423	191,087
St.Lawrence	111	246	132	114	47,668
Saratoga	17	17	1	16	21,295
Schenectady	123	216	90	126	92,728
Schoharie	9	9	0	9	7,991
Schuyler	7	7	0	7	4,471
Seneca	27	57	32	25	12,587
Steuben	84	156	70	86	36,817
Suffolk	988	2,076	1,085	991	547,598
Sullivan	42	58	15	43	26,715
Tioga	19	43	24	19	12,532
Tompkins	112	134	22	112	63,233
Ulster	133	209	75	134	72,595
Warren	18	24	7	17	13,345
Washington	23	34	14	20	17,131
Wayne	53	60	7	53	26,801
Westchester	1,871	4,081	2,087	1,994	1,105,790
Wyoming	10	10	0	10	5,133
Yates	4	4	0	4	1,206

Note: A breakout of Safety Net Assistance - FNP - Cash and Safety Net Assistance - FNP - Non-Cash data is not available for New York City.

Table 15
SAFETY NET ASSISTANCE - FNP - NON-CASH BY CASE CATEGORY
(Maintenance of Effort (MOE) vs. Non-Maintenance of Effort (Non-MOE))
Cases, Recipients, Children, Adults and Expenditures by Local District
February 2002

Local District	Maintenance of Effort (MOE)					Non-Maintenance of Effort (Non-MOE)				
	Cases	Recipients	Children	Adults	Expenditures	Cases	Recipients	Children	Adults	Expenditures
New York State	See Note	See Note	See Note	See Note	See Note	See Note	See Note	See Note	See Note	See Note
New York City	See Note	See Note	See Note	See Note	See Note	See Note	See Note	See Note	See Note	See Note
Rest of State	4,571	18,484	13,479	5,005	\$2,565,993	9,950	11,485	1,575	9,910	\$4,768,109
Albany	87	355	264	91	51,334	248	313	60	253	163,038
Allegany	22	88	63	25	7,868	22	25	2	23	10,922
Broome	70	298	216	82	32,025	201	210	8	202	121,983
Cattaraugus	8	27	17	10	2,337	40	47	7	40	12,402
Cayuga	7	32	23	9	4,150	17	19	3	16	8,455
Chautauqua	78	285	208	77	36,351	166	192	27	165	52,236
Chemung	15	75	55	20	6,099	49	62	19	43	29,408
Chenango	2	9	6	3	1,275	13	16	4	12	6,987
Clinton	8	24	16	8	2,592	43	49	8	41	27,791
Columbia	4	17	13	4	1,540	11	12	2	10	8,558
Cortland	6	19	13	6	2,420	41	43	3	40	21,589
Delaware	0	0	0	0	0	9	10	1	9	7,717
Dutchess	22	81	59	22	10,634	241	260	29	231	102,916
Erie	842	3,353	2,447	906	343,955	1,933	2,164	212	1,952	701,542
Essex	3	13	10	3	1,582	8	8	2	6	3,715
Franklin	14	46	31	15	5,642	18	24	4	20	5,819
Fulton	0	0	0	0	0	36	36	0	36	12,145
Genesee	2	6	5	1	712	29	31	4	27	17,741
Greene	2	8	6	2	681	25	39	17	22	14,436
Hamilton	0	0	0	0	0	0	0	0	0	0
Herkimer	1	6	5	1	23	17	21	4	17	10,257
Jefferson	34	124	85	39	17,787	117	128	11	117	56,257
Lewis	2	8	5	3	1,053	10	13	5	8	6,349
Livingston	7	22	14	8	2,410	50	51	1	50	23,457
Madison	0	0	0	0	0	1	1	0	1	950
Monroe	1,200	4,755	3,512	1,243	697,729	2,228	2,465	227	2,238	1,032,948
Montgomery	1	4	3	1	349	26	29	3	26	12,744
Nassau	221	828	597	231	128,230	356	451	113	338	228,111
Niagara	156	615	444	171	67,532	312	363	47	316	146,380
Oneida	92	388	288	100	41,030	172	198	31	167	104,813
Onondaga	152	639	482	157	76,512	318	404	104	300	135,965
Ontario	14	52	36	16	5,044	63	68	5	63	13,975
Orange	147	818	619	199	85,644	252	295	72	223	147,734
Orleans	4	20	15	5	2,465	37	98	59	39	15,842
Oswego	8	33	24	9	3,279	42	46	5	41	25,695
Otsego	1	7	5	2	506	11	11	0	11	8,830
Putnam	0	0	0	0	0	23	24	4	20	16,021
Rensselaer	22	88	65	23	9,531	96	109	12	97	61,330
Rockland	96	649	484	165	55,207	239	401	143	258	135,880
St.Lawrence	44	166	119	47	17,536	67	80	13	67	30,132
Saratoga	0	0	0	0	0	17	17	1	16	21,295
Schenectady	20	88	65	23	9,418	103	128	25	103	83,310
Schoharie	0	0	0	0	0	9	9	0	9	7,991
Schuyler	0	0	0	0	0	7	7	0	7	4,471
Seneca	8	36	28	8	3,115	19	21	4	17	9,472
Steuben	21	83	60	23	8,274	63	73	10	63	28,543
Suffolk	351	1,403	1,027	376	297,536	637	673	58	615	250,062
Sullivan	5	20	15	5	2,080	37	38	0	38	24,635
Tioga	9	32	22	10	4,141	10	11	2	9	8,391
Tompkins	8	27	19	8	3,480	104	107	3	104	59,753
Ulster	23	85	59	26	12,870	110	124	16	108	59,725
Warren	1	2	1	1	468	17	22	6	16	12,877
Washington	3	13	10	3	1,298	20	21	4	17	15,833
Wayne	0	0	0	0	0	53	60	7	53	26,801
Westchester	728	2,737	1,919	818	500,249	1,143	1,344	168	1,176	605,541
Wyoming	0	0	0	0	0	10	10	0	10	5,133
Yates	0	0	0	0	0	4	4	0	4	1,206

Note: Data from New York City does not allow the separation of Safety Net - FNP - Cash and Safety Net - FNP - Non-Cash data.

Table 16
FOOD STAMPS
Households, Persons and Value of Food Stamps Benefits by Local District
February 2002

Local District	Total			Temporary Assistance			Non-Temporary Assistance		
	Households	Persons	Food Stamps Benefits	Households	Persons	Food Stamps Benefits	Households	Persons	Food Stamps Benefits
New York State	672,294	1,332,154	\$123,578,116	468,119	833,357	\$84,684,530	204,175	498,797	\$38,893,586
New York City	422,046	810,390	81,786,250	344,035	631,702	66,668,941	78,011	178,688	15,117,309
Rest of State	250,248	521,764	41,791,866	124,084	201,655	18,015,589	126,164	320,109	23,776,277
Albany	8,479	17,306	1,420,320	4,822	8,194	766,088	3,657	9,112	654,232
Allegany	1,808	3,741	275,472	837	1,328	106,583	971	2,413	168,889
Broome	6,013	11,951	938,075	3,033	4,786	429,021	2,980	7,165	509,054
Cattaraugus	3,074	6,237	439,878	1,235	1,729	144,415	1,839	4,508	295,463
Cayuga	2,118	4,759	367,718	738	1,044	87,403	1,380	3,715	280,315
Chautauqua	5,586	11,887	970,617	2,891	4,878	464,186	2,695	7,009	506,431
Chemung	2,740	5,967	464,229	1,363	2,210	194,146	1,377	3,757	270,083
Chenango	1,712	3,777	283,365	487	677	59,243	1,225	3,100	224,122
Clinton	2,961	5,592	426,405	1,357	1,715	141,302	1,604	3,877	285,103
Columbia	1,357	2,466	193,194	586	808	72,455	771	1,658	120,739
Cortland	1,567	3,267	256,308	700	1,051	93,913	867	2,216	162,395
Delaware	1,275	2,425	170,210	483	604	45,875	792	1,821	124,335
Dutchess	3,435	6,328	490,918	1,558	2,256	205,882	1,877	4,072	285,036
Erie	36,161	74,026	6,062,005	18,400	30,150	2,820,094	17,761	43,876	3,241,911
Essex	1,151	2,142	153,140	499	653	47,457	652	1,489	105,683
Franklin	1,647	3,458	256,791	646	858	66,443	1,001	2,600	190,348
Fulton	1,975	4,324	340,291	771	1,051	93,543	1,204	3,273	246,748
Genesee	1,281	2,643	213,764	507	725	63,624	774	1,918	150,140
Greene	1,348	2,672	212,203	611	921	85,471	737	1,751	126,732
Hamilton	161	244	12,271	28	39	2,963	133	205	9,308
Herkimer	2,000	4,299	326,608	691	982	80,448	1,309	3,317	246,160
Jefferson	3,700	8,254	633,987	1,566	2,409	198,684	2,134	5,845	435,303
Lewis	826	1,818	129,876	276	373	27,840	550	1,445	102,036
Livingston	1,686	3,269	261,984	782	1,228	119,701	904	2,041	142,283
Madison	1,547	3,198	246,154	551	650	49,853	996	2,548	196,301
Monroe	27,063	58,579	4,757,156	15,207	28,170	2,497,697	11,856	30,409	2,259,459
Montgomery	1,928	4,370	359,115	638	904	80,501	1,290	3,466	278,614
Nassau	9,675	17,045	1,413,997	5,960	9,097	816,949	3,715	7,948	597,048
Niagara	6,352	13,057	1,039,379	3,271	5,471	487,686	3,081	7,586	551,693
Oneida	9,398	20,143	1,590,117	3,869	5,996	519,952	5,529	14,147	1,070,165
Onondaga	13,668	30,633	2,533,073	6,826	12,033	1,132,714	6,842	18,600	1,400,359
Ontario	2,323	4,405	331,786	1,011	1,454	129,861	1,312	2,951	201,925
Orange	7,189	18,220	1,564,151	3,000	5,621	530,147	4,189	12,599	1,034,004
Orleans	1,320	2,945	235,558	632	1,126	103,913	688	1,819	131,645
Oswego	3,611	8,612	671,936	1,310	1,900	165,517	2,301	6,712	506,419
Otsego	1,261	2,391	176,623	444	511	38,324	817	1,880	138,299
Putnam	503	697	46,803	287	346	25,088	216	351	21,715
Rensselaer	4,033	8,400	716,510	1,871	3,078	297,780	2,162	5,322	418,730
Rockland	4,745	15,217	1,248,743	1,781	3,375	234,387	2,964	11,842	1,014,356
St. Lawrence	3,552	7,456	558,992	1,621	2,393	204,761	1,931	5,063	354,231
Saratoga	2,811	5,417	409,312	934	1,026	80,176	1,877	4,391	329,136
Schenectady	4,120	8,892	709,019	1,705	2,484	221,845	2,415	6,408	487,174
Schoharie	789	1,613	116,568	259	316	23,161	530	1,297	93,407
Schuyler	467	1,017	77,891	209	350	30,782	258	667	47,109
Seneca	862	1,681	123,248	307	437	36,076	555	1,244	87,172
Steuben	2,934	6,283	469,289	1,338	2,043	176,228	1,596	4,240	293,061
Suffolk	14,626	26,466	2,132,150	9,003	14,287	1,234,474	5,623	12,179	897,676
Sullivan	2,172	4,400	337,737	1,014	1,487	130,588	1,158	2,913	207,149
Tioga	1,094	2,438	181,676	477	725	64,192	617	1,713	117,484
Tompkins	1,926	3,708	275,276	971	1,442	117,120	955	2,266	158,156
Ulster	3,493	6,506	481,888	1,845	2,822	235,031	1,648	3,684	246,857
Warren	1,674	3,179	246,615	772	1,067	89,593	902	2,112	157,022
Washington	1,678	3,380	255,197	656	824	69,321	1,022	2,556	185,876
Wayne	2,389	4,426	337,651	994	1,292	112,484	1,395	3,134	225,167
Westchester	15,437	31,121	2,628,160	9,893	17,543	1,601,422	5,544	13,578	1,026,738
Wyoming	811	1,641	119,650	322	425	36,286	489	1,216	83,364
Yates	736	1,376	100,817	239	291	24,900	497	1,085	75,917

Note: Food Stamps households containing only SSI recipients are counted as TA in accordance with Federal reporting requirements.

Note: Rest of State data does not include the following FAP data: 41 households, 43 persons, and \$4,847 in expenditures.

Table 17
SUPPLEMENTAL SECURITY INCOME
 Recipients, Total Program Expenditures, Federal and State Shares, by Local District
 February 2002

Local District	Expenditures			
	Recipients	Total	Federal	State
New York State*	629,383	\$292,233,419	\$244,199,622	\$48,033,797
New York City	399,918	192,761,505	164,728,410	28,033,095
Rest of State	219,372	95,951,012	77,175,184	18,775,828
Albany	6,204	2,703,233	2,158,029	545,204
Allegany	1,461	625,570	504,278	121,292
Broome	5,113	2,244,184	1,844,778	399,406
Cattaraugus	2,371	1,023,288	833,120	190,168
Cayuga	1,754	765,900	606,628	159,272
Chautauqua	3,948	1,772,689	1,445,767	326,922
Chemung	2,816	1,234,453	1,020,863	213,590
Chenango	1,358	546,903	464,603	82,300
Clinton	2,476	1,043,058	853,203	189,855
Columbia	1,503	650,164	496,009	154,155
Cortland	1,176	512,365	415,302	97,063
Delaware	1,209	473,877	376,234	97,643
Dutchess	4,306	1,876,350	1,423,651	452,699
Erie	25,121	11,451,097	9,387,741	2,063,356
Essex	937	368,952	270,256	98,696
Franklin	1,571	643,124	510,706	132,418
Fulton	1,656	675,258	539,503	135,755
Genesee	1,004	377,118	295,848	81,270
Greene	1,086	446,844	358,400	88,444
Hamilton	76	26,631	21,923	4,708
Herkimer	1,532	595,784	478,427	117,357
Jefferson	2,866	1,256,002	1,030,613	225,389
Lewis	634	262,517	215,868	46,649
Livingston	924	398,518	330,127	68,391
Madison	1,232	525,977	414,029	111,948
Monroe	17,838	8,327,356	6,838,423	1,488,933
Montgomery	1,332	513,216	415,419	97,797
Nassau	16,708	7,180,970	5,595,120	1,585,850
Niagara	4,795	2,090,503	1,685,177	405,326
Oneida	7,179	3,179,052	2,638,963	540,089
Onondaga	11,251	5,064,714	4,225,760	838,954
Ontario	1,556	652,392	527,919	124,473
Orange	6,010	2,581,137	2,105,612	475,525
Orleans	897	350,562	287,800	62,762
Oswego	2,878	1,300,671	1,095,470	205,201
Otsego	1,300	531,779	406,332	125,447
Putnam	745	344,741	256,299	88,442
Rensselaer	3,166	1,336,083	1,069,299	266,784
Rockland	4,427	1,950,346	1,417,659	532,687
St.Lawrence	3,649	1,625,298	1,362,431	262,867
Saratoga	2,490	1,007,988	800,830	207,158
Schenectady	3,751	1,638,249	1,329,140	309,109
Schoharie	697	279,489	207,640	71,849
Schuyler	476	208,649	165,026	43,623
Seneca	695	286,603	226,365	60,238
Steuben	2,935	1,261,578	1,054,813	206,765
Suffolk	20,798	9,128,776	7,039,103	2,089,673
Sullivan	2,519	1,065,872	783,099	282,773
Tioga	987	433,404	369,126	64,278
Tompkins	1,503	634,258	499,151	135,107
Ulster	3,942	1,667,336	1,340,581	326,755
Warren	1,420	545,916	442,852	103,064
Washington	1,404	574,532	466,833	107,699
Wayne	1,814	736,540	601,100	135,440
Westchester	14,806	6,545,415	5,301,696	1,243,719
Wyoming	634	240,275	191,894	48,381
Yates	436	167,456	132,346	35,110
Mental Hygiene	10,093	3,520,902	2,296,028	1,224,874

* Only NYS includes Mental Hygiene

Table 18
SUPPLEMENTAL SECURITY INCOME
 SSI Recipients by Living Arrangement and Location
 February 2002

Living Arrangement	New York State	New York City	Rest of State	Mental Hygiene
Living Alone	327,145	224,508	102,579	58
Living With Others	213,295	133,956	79,316	23
Living in Household of Another	24,486	15,642	8,839	5
Congregate Care Level I	5,703	601	480	4,622
Congregate Care Level II	36,759	14,187	22,017	555
Congregate Care Level III	162	35	127	0
Title XIX Institution	21,833	10,989	6,014	4,830
Total	629,383	399,918	219,372	10,093

Table 19
SUPPLEMENTAL SECURITY INCOME
 SSI Recipients by Living Arrangement and Category of Assistance
 February 2002

Living Arrangement	Total	Category of Assistance		
		Aged	Blind	Disabled
Living Alone	327,145	101,732	1,681	223,732
Living With Others	213,295	17,510	1,096	194,689
Living in Household of Another	24,486	10,160	165	14,161
Congregate Care Level I	5,703	295	25	5,383
Congregate Care Level II	36,759	5,068	187	31,504
Congregate Care Level III	162	1	0	161
Title XIX Institution	21,833	3,689	130	18,014
Total	629,383	138,455	3,284	487,644

Table 20
CHILD SUPPORT COLLECTIONS (IV-D)
February 2002

Local District	Total	Current Assistance	Former Assistance	Never Assistance
New York State	\$97,113,652	\$7,267,179	\$36,984,922	\$52,861,551
New York City	35,404,142	4,214,493	15,269,493	15,920,156
Rest of State	61,709,510	3,052,686	21,715,429	36,941,395
Albany	1,760,511	72,757	495,064	1,192,690
Allegany	377,583	27,453	212,437	137,693
Broome	1,135,034	56,942	425,273	652,819
Cattaraugus	645,900	47,601	305,223	293,076
Cayuga	591,007	17,276	210,589	363,142
Chautauqua	1,054,610	73,191	594,674	386,745
Chemung	718,812	33,357	270,653	414,802
Chenango	392,108	19,921	117,281	254,906
Clinton	573,857	24,496	254,433	294,928
Columbia	360,532	11,446	120,474	228,612
Cortland	358,658	13,201	132,420	213,037
Delaware	323,910	11,097	110,940	201,873
Dutchess	1,783,526	57,335	452,905	1,273,286
Erie	4,271,755	266,862	2,228,004	1,776,889
Essex	266,203	10,724	145,707	109,772
Franklin	432,928	13,831	182,510	236,587
Fulton	434,738	17,181	152,801	264,756
Genesee	395,516	11,754	137,616	246,146
Greene	356,056	16,266	142,845	196,945
Hamilton	32,710	65	13,701	18,944
Herkimer	474,438	17,939	209,998	246,501
Jefferson	887,701	49,705	343,195	494,801
Lewis	187,773	6,409	61,536	119,828
Livingston	499,072	27,428	164,546	307,098
Madison	412,736	14,444	153,608	244,684
Monroe	4,188,972	349,676	1,837,809	2,001,487
Montgomery	370,136	19,183	148,208	202,745
Nassau	5,392,726	188,039	1,193,353	4,011,334
Niagara	1,309,893	87,096	663,567	559,230
Oneida	1,087,643	70,870	495,905	520,868
Onondaga	2,974,666	161,101	1,323,824	1,489,741
Ontario	743,548	31,437	234,971	477,140
Orange	2,072,648	103,063	547,230	1,422,355
Orleans	261,448	15,045	124,059	122,344
Oswego	941,787	28,930	471,245	441,612
Otsego	360,664	7,874	93,429	259,361
Putnam	466,292	2,968	71,830	391,494
Rensselaer	1,089,509	47,945	356,854	684,710
Rockland	1,538,780	51,000	463,314	1,024,466
St.Lawrence	747,666	30,116	364,716	352,834
Saratoga	1,186,977	17,362	220,483	949,132
Schenectady	1,002,122	34,541	278,637	688,944
Schoharie	245,203	8,610	91,871	144,722
Schuyler	123,541	3,890	37,601	82,050
Seneca	260,560	7,954	78,519	174,087
Steuben	659,673	34,704	297,495	327,474
Suffolk	7,819,741	367,281	2,068,248	5,384,212
Sullivan	424,635	27,088	153,758	243,789
Tioga	333,747	18,230	137,794	177,723
Tompkins	471,927	21,653	184,448	265,826
Ulster	1,010,352	42,479	290,507	677,366
Warren	594,265	20,103	175,990	398,172
Washington	532,841	24,080	169,868	338,893
Wayne	705,116	21,161	192,297	491,658
Westchester	3,622,063	276,404	1,149,267	2,196,392
Wyoming	282,663	10,949	103,459	168,255
Yates	160,032	3,173	56,440	100,419

Note: Effective February 1999, collection amounts include collections made on behalf of other states.