



NEW YORK STATE
OFFICE OF TEMPORARY AND DISABILITY ASSISTANCE
40 North Pearl Street, Albany, New York 12243-0001

George E. Pataki
Governor

Brian J. Wing
Commissioner

Temporary and Disability Assistance Statistics

April 2002

Temporary Assistance

Temporary Assistance: Temporary Assistance recipients totaled 628,008 in April 2002, decreasing 10,245 (-1.6%) from the previous month. Related expenditures totaled \$143,945,862 in April 2002, decreasing just over \$2.0 million (-1.4%) over March 2002.

Food Stamps

Food Stamps: Recipients of Food Stamps numbered 1,351,135 in April 2002, increasing 4,824 (+0.4%) over March 2002. Food Stamps expenditures totaled \$123,732,057 in April 2002, decreasing \$1.6 million (-1.3%) over the previous month.

Supplemental Security Income

Supplemental Security Income: For April 2002, SSI recipients (including Mental Hygiene) totaled 625,907, decreasing 2,502 (-0.4%) from the previous month. SSI expenditures in April totaled \$293,484,358 increasing (+0.5) from March 2002.

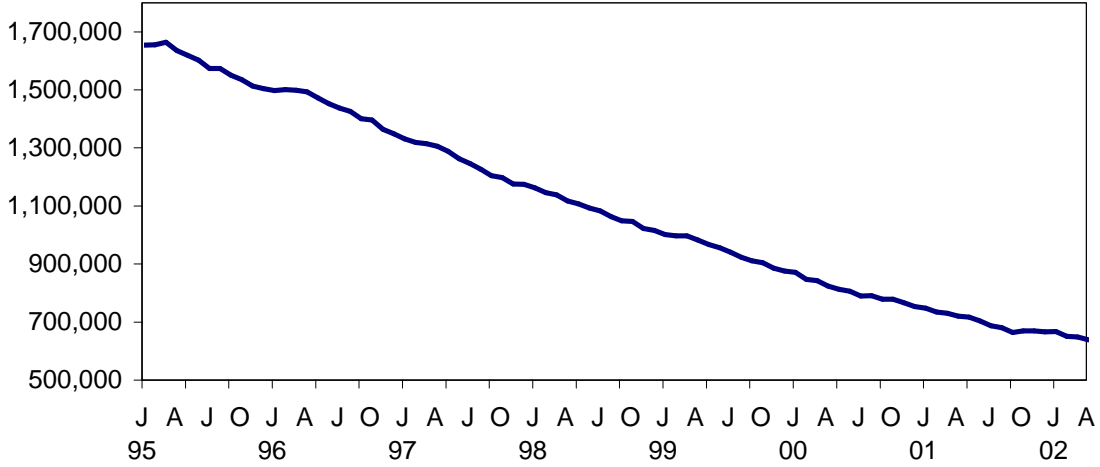
Table of Contents

Page Number

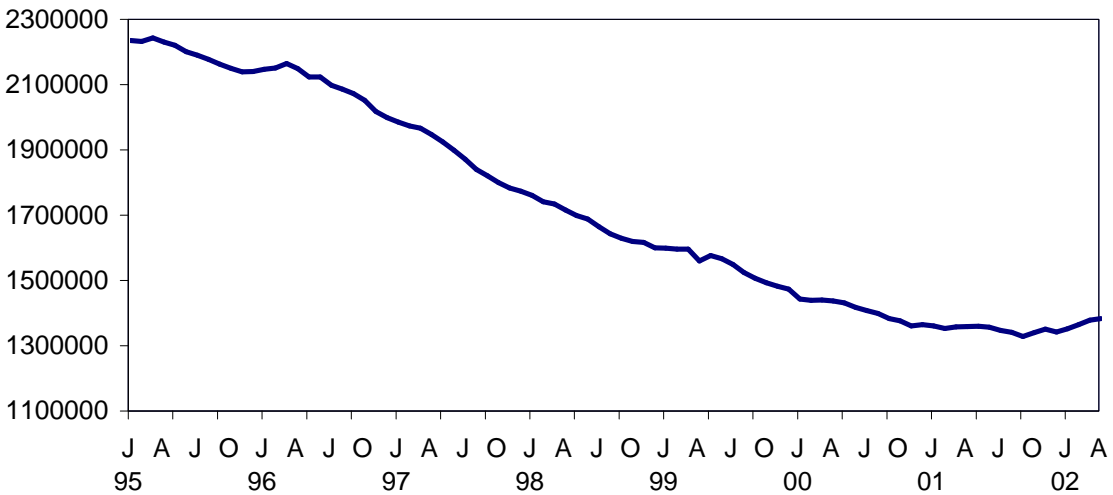
Graphs.....	3
Summary Tables.....	4
Temporary Assistance by Program Area.....	5
Temporary Assistance by Funding Source.....	9
Other Programs.....	17

NEW YORK STATE

TEMPORARY ASSISTANCE RECIPIENTS

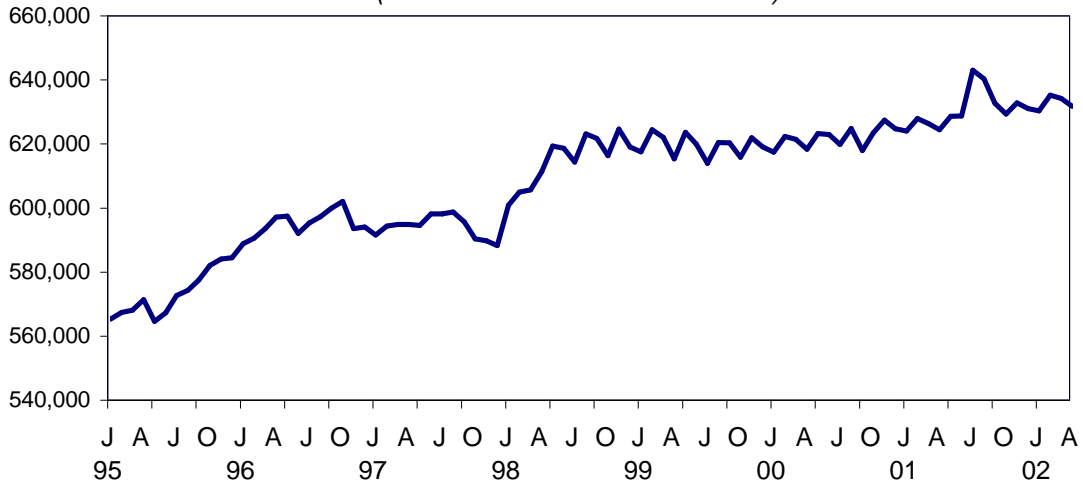


FOOD STAMPS PERSONS



SSI PERSONS

(INCLUDING MENTAL HYGIENE)



SELECTED SUMMARY PROGRAM DATA
BY REGION

Table 1
TEMPORARY AND DISABILITY ASSISTANCE CASES
April 2002

Region	Cases				
	Temporary Assistance by Program			Supplemental Security Income	Food Stamps
	Total	Family Assistance	Safety Net Assistance		
New York State	302,689	150,975	151,714	616,004	683,994
New York City	211,803	98,810	112,993	398,122	429,459
Rest of State	90,886	52,165	38,721	217,882	254,535

Table 2
TEMPORARY AND DISABILITY ASSISTANCE RECIPIENTS
April 2002

Region	Recipients				
	Temporary Assistance by Program			Supplemental Security Income	Food Stamps
	Total	Family Assistance	Safety Net Assistance		
New York State	628,008	359,623	268,385	616,004	1,351,135
New York City	438,499	230,966	207,533	398,122	822,530
Rest of State	189,509	128,657	60,852	217,882	528,605

Table 3
TEMPORARY AND DISABILITY ASSISTANCE EXPENDITURES
April 2002

Region	Expenditures				
	Temporary Assistance by Program			Supplemental Security Income	Food Stamps
	Total	Family Assistance	Safety Net Assistance		
New York State	\$143,945,862	\$79,348,121	\$64,597,741	\$289,881,740	\$123,732,057
New York City	93,682,000	49,126,000	44,556,000	192,795,495	81,386,498
Rest of State	50,263,862	30,222,121	20,041,741	97,086,245	42,345,559

Note: SSI data listed here do not include Mental Hygiene data. See Tables 17 - 19 for total SSI data.

Table 4
TEMPORARY ASSISTANCE
 Year to Year Monthly Comparison by Local District
 Cases, Recipients and Expenditures
 April 2002

Local District	April 2002			April 2001			April 2000		
	Cases	Recipients	Expenditures	Cases	Recipients	Expenditures	Cases	Recipients	Expenditures
New York State	302,689	628,008	\$143,945,862	334,165	710,007	\$151,900,655	375,335	813,053	\$163,570,498
New York City*	211,803	438,499	93,682,000	242,662	511,561	102,694,000	272,113	584,070	112,789,000
Rest of State	90,886	189,509	50,263,862	91,503	198,446	49,206,655	103,222	228,983	50,781,498
Albany	3,597	7,487	2,134,568	3,255	7,233	1,621,782	3,351	7,512	1,791,286
Allegany	490	1,099	193,545	493	1,128	179,667	578	1,332	226,484
Broome	2,153	4,505	1,021,739	1,900	4,109	869,497	2,265	5,148	938,527
Cattaraugus	635	1,309	265,691	629	1,319	258,071	669	1,451	258,443
Cayuga	404	862	173,422	407	890	165,177	441	989	179,879
Chautauqua	2,303	4,850	959,945	2,029	4,318	882,905	2,121	4,688	846,265
Chemung	1,014	2,212	417,627	841	1,866	341,397	962	2,199	392,387
Chenango	229	476	96,493	228	507	106,267	264	560	113,610
Clinton	656	1,184	281,553	590	1,100	254,075	584	1,150	236,599
Columbia	400	737	173,130	384	709	157,923	392	793	163,657
Cortland	459	968	202,743	379	830	169,281	409	934	191,830
Delaware	155	264	61,319	192	355	73,728	207	396	92,215
Dutchess	1,315	2,379	757,217	1,317	2,504	693,225	1,533	3,068	726,534
Erie	12,598	27,030	5,310,034	14,393	31,734	6,106,046	17,002	38,069	6,652,368
Essex	196	390	63,553	209	426	72,237	250	488	97,079
Franklin	327	643	129,104	300	593	122,684	352	686	121,200
Fulton	409	762	181,993	378	704	157,124	421	905	167,862
Genesee	281	541	119,190	277	580	121,814	301	642	138,510
Greene	420	800	188,894	406	800	184,278	419	869	170,951
Hamilton	17	22	5,854	18	29	6,240	15	22	5,853
Herkimer	343	693	151,029	306	624	120,236	376	803	137,578
Jefferson	1,028	2,120	469,186	1,032	2,112	459,066	1,263	2,619	523,349
Lewis	127	248	49,037	121	245	43,058	143	289	49,716
Livingston	585	1,106	258,613	535	1,029	236,325	480	998	204,463
Madison	164	296	71,225	170	296	72,256	177	336	69,526
Monroe	13,704	29,851	7,046,605	14,497	32,629	8,430,694	16,642	38,382	8,702,219
Montgomery	370	801	178,365	286	579	126,693	311	632	130,362
Nassau	4,263	8,341	2,773,092	4,441	8,963	2,501,608	5,012	10,236	2,643,171
Niagara	2,433	5,135	974,182	2,469	5,180	990,682	2,773	5,814	1,030,883
Oneida	2,254	5,342	1,018,592	2,274	5,673	1,013,390	2,611	6,522	1,141,011
Onondaga	6,080	13,001	2,686,665	5,728	12,776	2,573,108	5,983	13,838	2,593,650
Ontario	661	1,199	311,438	559	1,068	244,792	548	1,050	236,501
Orange	2,576	5,933	1,398,241	2,870	7,622	1,554,970	3,107	7,976	1,786,832
Orleans	506	1,081	217,800	485	1,099	212,260	484	1,111	216,369
Oswego	778	1,597	363,515	784	1,707	362,895	828	1,970	366,861
Otsego	148	217	77,074	109	173	52,678	112	187	52,965
Putnam	130	211	102,187	120	187	75,188	132	214	81,417
Rensselaer	1,298	2,734	617,763	1,102	2,405	520,273	1,189	2,669	520,751
Rockland	1,139	3,018	614,674	1,144	3,375	650,468	1,278	3,704	709,928
St.Lawrence	1,012	1,977	397,981	1,028	2,054	391,651	1,235	2,580	456,434
Saratoga	288	428	142,433	242	373	105,652	256	430	115,545
Schenectady	1,065	2,123	554,580	1,053	2,272	492,890	1,097	2,493	495,317
Schoharie	99	171	63,747	87	154	40,529	101	176	44,758
Schuyler	137	304	63,031	114	226	43,968	114	242	45,712
Seneca	165	327	67,175	184	344	73,527	189	396	74,407
Steuben	898	1,712	353,921	761	1,523	305,220	989	2,088	382,562
Suffolk	7,462	14,721	6,439,550	7,046	14,217	5,045,574	7,764	16,300	4,692,373
Sullivan	606	1,295	301,150	570	1,144	252,166	574	1,226	253,851
Tioga	334	668	144,134	266	562	114,129	332	734	132,409
Tompkins	678	1,291	347,261	649	1,244	304,940	670	1,330	299,363
Ulster	1,232	2,487	632,138	1,195	2,346	613,049	1,330	2,551	694,110
Warren	277	508	118,645	277	516	140,438	259	490	110,071
Washington	350	583	170,450	282	520	105,152	351	689	164,134
Wayne	538	971	243,428	473	868	201,237	569	1,198	234,537
Westchester	8,830	18,063	8,010,014	9,335	20,078	8,079,693	11,131	24,237	7,762,047
Wyoming	165	267	57,497	199	378	75,301	179	361	72,365
Yates	105	169	39,830	85	151	37,481	97	211	42,412

* Expenditures partially estimated.

Table 5
TEMPORARY ASSISTANCE
Cases, Recipients, Children, Adults and Expenditures by Local District
April 2002

Local District	Temporary Assistance				
	Cases	Recipients	Children	Adults	Expenditures
New York State	302,689	628,008	367,445	260,563	\$143,945,862
New York City*	211,803	438,499	252,863	185,636	93,682,000
Rest of State	90,886	189,509	114,582	74,927	50,263,862
Albany	3,597	7,487	4,353	3,134	2,134,568
Allegany	490	1,099	664	435	193,545
Broome	2,153	4,505	2,726	1,779	1,021,739
Cattaraugus	635	1,309	794	515	265,691
Cayuga	404	862	563	299	173,422
Chautauqua	2,303	4,850	2,832	2,018	959,945
Chemung	1,014	2,212	1,387	825	417,627
Chenango	229	476	299	177	96,493
Clinton	656	1,184	653	531	281,553
Columbia	400	737	434	303	173,130
Cortland	459	968	541	427	202,743
Delaware	155	264	177	87	61,319
Dutchess	1,315	2,379	1,482	897	757,217
Erie	12,598	27,030	16,405	10,625	5,310,034
Essex	196	390	218	172	63,553
Franklin	327	643	379	264	129,104
Fulton	409	762	429	333	181,993
Genesee	281	541	320	221	119,190
Greene	420	800	437	363	188,894
Hamilton	17	22	8	14	5,854
Herkimer	343	693	439	254	151,029
Jefferson	1,028	2,120	1,177	943	469,186
Lewis	127	248	159	89	49,037
Livingston	585	1,106	545	561	258,613
Madison	164	296	214	82	71,225
Monroe	13,704	29,851	18,366	11,485	7,046,605
Montgomery	370	801	466	335	178,365
Nassau	4,263	8,341	5,261	3,080	2,773,092
Niagara	2,433	5,135	3,060	2,075	974,182
Oneida	2,254	5,342	3,416	1,926	1,018,592
Onondaga	6,080	13,001	8,054	4,947	2,686,665
Ontario	661	1,199	645	554	311,438
Orange	2,576	5,933	3,901	2,032	1,398,241
Orleans	506	1,081	616	465	217,800
Oswego	778	1,597	1,025	572	363,515
Otsego	148	217	122	95	77,074
Putnam	130	211	108	103	102,187
Rensselaer	1,298	2,734	1,634	1,100	617,763
Rockland	1,139	3,018	2,013	1,005	614,674
St.Lawrence	1,012	1,977	1,108	869	397,981
Saratoga	288	428	298	130	142,433
Schenectady	1,065	2,123	1,405	718	554,580
Schoharie	99	171	109	62	63,747
Schuyler	137	304	183	121	63,031
Seneca	165	327	197	130	67,175
Steuben	898	1,712	916	796	353,921
Suffolk	7,462	14,721	8,615	6,106	6,439,550
Sullivan	606	1,295	835	460	301,150
Tioga	334	668	415	253	144,134
Tompkins	678	1,291	708	583	347,261
Ulster	1,232	2,487	1,594	893	632,138
Warren	277	508	276	232	118,645
Washington	350	583	329	254	170,450
Wayne	538	971	569	402	243,428
Westchester	8,830	18,063	10,475	7,588	8,010,014
Wyoming	165	267	143	124	57,497
Yates	105	169	85	84	39,830

* Expenditures partially estimated.

Table 6
FAMILY ASSISTANCE
Cases, Recipients, Children, Adults and Expenditures by Local District
April 2002

Local District	Family Assistance				
	Cases	Recipients	Children	Adults	Expenditures
New York State	150,975	359,623	259,353	100,270	\$79,348,121
New York City*	98,810	230,966	166,488	64,478	49,126,000
Rest of State	52,165	128,657	92,865	35,792	30,222,121
Albany	2,176	5,475	3,781	1,694	1,304,446
Allegany	332	849	581	268	139,264
Broome	1,330	3,331	2,382	949	641,560
Cattaraugus	402	998	719	279	176,074
Cayuga	301	711	518	193	123,263
Chautauqua	1,441	3,618	2,455	1,163	664,397
Chemung	710	1,777	1,254	523	296,640
Chenango	166	400	285	115	71,935
Clinton	395	876	605	271	163,718
Columbia	263	589	422	167	115,878
Cortland	291	756	499	257	138,234
Delaware	102	206	173	33	38,621
Dutchess	772	1,701	1,307	394	481,159
Erie	6,946	17,524	12,679	4,845	3,152,630
Essex	132	309	204	105	45,171
Franklin	223	492	336	156	90,203
Fulton	273	608	419	189	119,399
Genesee	157	391	286	105	71,911
Greene	270	626	413	213	128,939
Hamilton	5	9	8	1	1,538
Herkimer	250	585	421	164	113,321
Jefferson	578	1,499	1,022	477	265,954
Lewis	86	199	148	51	34,050
Livingston	333	787	482	305	157,383
Madison	123	251	209	42	53,701
Monroe	6,948	17,754	13,047	4,707	3,793,575
Montgomery	231	644	449	195	108,145
Nassau	2,522	5,723	4,394	1,329	1,811,962
Niagara	1,424	3,422	2,373	1,049	581,157
Oneida	1,437	4,019	2,931	1,088	665,264
Onondaga	3,808	9,679	6,953	2,726	1,753,904
Ontario	363	833	578	255	167,669
Orange	1,632	4,148	3,091	1,057	882,800
Orleans	298	786	533	253	134,802
Oswego	545	1,291	951	340	248,137
Otsego	68	124	110	14	29,556
Putnam	62	137	99	38	62,464
Rensselaer	911	2,226	1,516	710	437,626
Rockland	585	1,657	1,297	360	321,022
St.Lawrence	634	1,445	953	492	262,601
Saratoga	177	304	275	29	76,400
Schenectady	705	1,609	1,244	365	357,249
Schoharie	62	133	106	27	34,831
Schuyler	97	254	177	77	41,087
Seneca	102	230	160	70	40,608
Steuben	510	1,214	812	402	214,018
Suffolk	3,648	9,133	6,865	2,268	4,132,427
Sullivan	432	1,079	794	285	221,658
Tioga	249	555	389	166	106,565
Tompkins	385	927	637	290	204,799
Ulster	859	1,960	1,438	522	451,399
Warren	163	375	261	114	74,339
Washington	206	418	297	121	90,681
Wayne	309	718	535	183	149,093
Westchester	4,590	10,986	7,774	3,212	4,120,230
Wyoming	93	191	136	55	34,798
Yates	53	116	82	34	21,866

* Expenditures partially estimated.

Table 7
SAFETY NET ASSISTANCE
Cases, Recipients, Children, Adults and Expenditures by Local District
April 2002

Local District	Safety Net Assistance				
	Cases	Recipients	Children	Adults	Expenditures
New York State	151,714	268,385	108,092	160,293	\$64,597,741
New York City*	112,993	207,533	86,375	121,158	44,556,000
Rest of State	38,721	60,852	21,717	39,135	20,041,741
Albany	1,421	2,012	572	1,440	830,122
Allegany	158	250	83	167	54,281
Broome	823	1,174	344	830	380,179
Cattaraugus	233	311	75	236	89,617
Cayuga	103	151	45	106	50,159
Chautauqua	862	1,232	377	855	295,548
Chemung	304	435	133	302	120,987
Chenango	63	76	14	62	24,558
Clinton	261	308	48	260	117,835
Columbia	137	148	12	136	57,252
Cortland	168	212	42	170	64,509
Delaware	53	58	4	54	22,698
Dutchess	543	678	175	503	276,058
Erie	5,652	9,506	3,726	5,780	2,157,404
Essex	64	81	14	67	18,382
Franklin	104	151	43	108	38,901
Fulton	136	154	10	144	62,594
Genesee	124	150	34	116	47,279
Greene	150	174	24	150	59,955
Hamilton	12	13	0	13	4,316
Herkimer	93	108	18	90	37,708
Jefferson	450	621	155	466	203,232
Lewis	41	49	11	38	14,987
Livingston	252	319	63	256	101,230
Madison	41	45	5	40	17,524
Monroe	6,756	12,097	5,319	6,778	3,253,030
Montgomery	139	157	17	140	70,220
Nassau	1,741	2,618	867	1,751	961,130
Niagara	1,009	1,713	687	1,026	393,025
Oneida	817	1,323	485	838	353,328
Onondaga	2,272	3,322	1,101	2,221	932,761
Ontario	298	366	67	299	143,769
Orange	944	1,785	810	975	515,441
Orleans	208	295	83	212	82,998
Oswego	233	306	74	232	115,378
Otsego	80	93	12	81	47,518
Putnam	68	74	9	65	39,723
Rensselaer	387	508	118	390	180,137
Rockland	554	1,361	716	645	293,652
St.Lawrence	378	532	155	377	135,380
Saratoga	111	124	23	101	66,033
Schenectady	360	514	161	353	197,331
Schoharie	37	38	3	35	28,916
Schuyler	40	50	6	44	21,944
Seneca	63	97	37	60	26,567
Steuben	388	498	104	394	139,903
Suffolk	3,814	5,588	1,750	3,838	2,307,123
Sullivan	174	216	41	175	79,492
Tioga	85	113	26	87	37,569
Tompkins	293	364	71	293	142,462
Ulster	373	527	156	371	180,739
Warren	114	133	15	118	44,306
Washington	144	165	32	133	79,769
Wayne	229	253	34	219	94,335
Westchester	4,240	7,077	2,701	4,376	3,889,784
Wyoming	72	76	7	69	22,699
Yates	52	53	3	50	17,964

* Expenditures partially estimated.

Table 8
 TEMPORARY ASSISTANCE BY FUNDING SOURCE
 Cases, Recipients and Expenditures by Local District
 April 2002

Local District	Total			Federally Participating-TANF Family Assistance and Safety Net-FP			Federally Non-Participating Safety Net Assistance-FNP		
	Cases	Recipients	Expenditures	Cases	Recipients	Expenditures	Cases	Recipients	Expenditures
New York State	302,689	628,008	\$143,945,862	152,882	363,891	\$80,374,199	150,076	264,117	\$63,571,663
New York City*	211,803	438,499	93,682,000	98,942	231,258	49,158,000	112,861	207,241	44,524,000
Rest of State	90,886	189,509	50,263,862	53,940	132,633	31,216,199	37,215	56,876	19,047,663
Albany	3,597	7,487	2,134,568	2,204	5,546	1,329,257	1,393	1,941	805,311
Allegany	490	1,099	193,545	333	853	139,311	157	246	54,234
Broome	2,153	4,505	1,021,739	1,365	3,420	658,023	788	1,085	363,716
Cattaraugus	635	1,309	265,691	416	1,038	179,170	219	271	86,521
Cayuga	404	862	173,422	305	720	125,323	99	142	48,099
Chautauqua	2,303	4,850	959,945	1,472	3,702	675,821	831	1,148	284,124
Chemung	1,014	2,212	417,627	719	1,804	301,315	295	408	116,312
Chenango	229	476	96,493	166	400	71,935	63	76	24,558
Clinton	656	1,184	281,553	404	893	168,179	252	291	113,374
Columbia	400	737	173,130	264	592	116,698	136	145	56,432
Cortland	459	968	202,743	302	783	143,708	157	185	59,035
Delaware	155	264	61,319	103	207	39,693	52	57	21,626
Dutchess	1,315	2,379	757,217	800	1,752	506,324	515	627	250,893
Erie	12,598	27,030	5,310,034	7,246	18,318	3,289,716	5,352	8,712	2,020,318
Essex	196	390	63,553	135	316	45,800	61	74	17,753
Franklin	327	643	129,104	225	496	91,323	102	147	37,781
Fulton	409	762	181,993	276	621	121,774	133	141	60,219
Genesee	281	541	119,190	166	412	75,162	115	129	44,028
Greene	420	800	188,894	271	627	129,816	149	173	59,078
Hamilton	17	22	5,854	5	9	1,538	12	13	4,316
Herkimer	343	693	151,029	251	589	113,835	92	104	37,194
Jefferson	1,028	2,120	469,186	601	1,554	273,855	427	566	195,331
Lewis	127	248	49,037	86	199	34,050	41	49	14,987
Livingston	585	1,106	258,613	357	848	169,233	228	258	89,380
Madison	164	296	71,225	123	251	53,701	41	45	17,524
Monroe	13,704	29,851	7,046,605	7,419	19,002	4,077,879	6,285	10,849	2,968,726
Montgomery	370	801	178,365	231	644	108,145	139	157	70,220
Nassau	4,263	8,341	2,773,092	2,563	5,833	1,829,813	1,700	2,508	943,279
Niagara	2,433	5,135	974,182	1,525	3,559	600,091	962	1,576	374,091
Oneida	2,254	5,342	1,018,592	1,467	4,112	678,779	787	1,230	339,813
Onondaga	6,080	13,001	2,686,665	3,902	9,750	1,771,628	2,245	3,251	915,037
Ontario	661	1,199	311,438	371	848	172,214	292	351	139,224
Orange	2,576	5,933	1,398,241	1,755	4,202	901,079	922	1,731	497,162
Orleans	506	1,081	217,800	319	792	136,532	205	289	81,268
Oswego	778	1,597	363,515	591	1,318	253,021	222	279	110,494
Otsego	148	217	77,074	81	134	31,692	75	83	45,382
Putnam	130	211	102,187	58	139	64,179	67	72	38,008
Rensselaer	1,298	2,734	617,763	920	2,282	449,053	367	452	168,710
Rockland	1,139	3,018	614,674	597	1,693	326,688	542	1,325	287,986
St.Lawrence	1,012	1,977	397,981	637	1,454	263,285	375	523	134,696
Saratoga	288	428	142,433	178	308	77,073	110	120	65,360
Schenectady	1,065	2,123	554,580	722	1,655	369,221	343	468	185,359
Schoharie	99	171	63,747	62	133	34,831	37	38	28,916
Schuyler	137	304	63,031	97	254	41,087	40	50	21,944
Seneca	165	327	67,175	105	239	42,886	60	88	24,289
Steuben	898	1,712	353,921	515	1,225	215,760	383	487	138,161
Suffolk	7,462	14,721	6,439,550	3,727	9,368	4,244,594	3,735	5,353	2,194,956
Sullivan	606	1,295	301,150	434	1,086	222,840	172	209	78,310
Tioga	334	668	144,134	252	561	111,158	82	107	32,976
Tompkins	678	1,291	347,261	399	956	212,801	279	335	134,460
Ulster	1,232	2,487	632,138	903	2,078	476,031	329	409	156,107
Warren	277	508	118,645	165	383	75,701	112	125	42,944
Washington	350	583	170,450	210	428	92,222	140	155	78,228
Wayne	538	971	243,428	314	734	151,738	224	237	91,690
Westchester	8,830	18,063	8,010,014	4,677	11,199	4,272,451	4,153	6,864	3,737,563
Wyoming	165	267	57,497	96	198	35,301	69	69	22,196
Yates	105	169	39,830	53	116	21,866	52	53	17,964

* Expenditures partially estimated.

Table 9
 TEMPORARY ASSISTANCE TO NEEDY FAMILIES (TANF)-FP BY PROGRAM
 Cases, Recipients, Children, Adults and Expenditures by Local District
 April 2002

Local District	Family Assistance					Safety Net Assistance-FP				
	Cases	Recipients	Children	Adults	Expenditures	Cases	Recipients	Children	Adults	Expenditures
New York State	150,975	359,623	259,353	100,270	\$79,348,121	1,638	3,976	2,531	1,737	\$1,026,078
New York City*	98,810	230,966	166,488	64,478	49,126,000	132	292	153	139	32,000
Rest of State	52,165	128,657	92,865	35,792	30,222,121	1,506	3,976	2,378	1,598	994,078
Albany	2,176	5,475	3,781	1,694	1,304,446	28	71	39	32	24,811
Allegany	332	849	581	268	139,264	1	4	2	2	47
Broome	1,330	3,331	2,382	949	641,560	35	89	45	44	16,463
Cattaraugus	402	998	719	279	176,074	14	40	26	14	3,096
Cayuga	301	711	518	193	123,263	4	9	5	4	2,060
Chautauqua	1,441	3,618	2,455	1,163	664,397	31	84	58	26	11,424
Chemung	710	1,777	1,254	523	296,640	9	27	19	8	4,675
Chenango	166	400	285	115	71,935	0	0	0	0	0
Clinton	395	876	605	271	163,718	9	17	8	9	4,461
Columbia	263	589	422	167	115,878	1	3	2	1	820
Cortland	291	756	499	257	138,234	11	27	13	14	5,474
Delaware	102	206	173	33	38,621	1	1	0	1	1,072
Dutchess	772	1,701	1,307	394	481,159	28	51	27	24	25,165
Erie	6,946	17,524	12,679	4,845	3,152,630	300	794	460	334	137,086
Essex	132	309	204	105	45,171	3	7	3	4	629
Franklin	223	492	336	156	90,203	2	4	2	2	1,120
Fulton	273	608	419	189	119,399	3	13	8	5	2,375
Genesee	157	391	286	105	71,911	9	21	11	10	3,251
Greene	270	626	413	213	128,939	1	1	0	1	877
Hamilton	5	9	8	1	1,538	0	0	0	0	0
Herkimer	250	585	421	164	113,321	1	4	2	2	514
Jefferson	578	1,499	1,022	477	265,954	23	55	28	27	7,901
Lewis	86	199	148	51	34,050	0	0	0	0	0
Livingston	333	787	482	305	157,383	24	61	33	28	11,850
Madison	123	251	209	42	53,701	0	0	0	0	0
Monroe	6,948	17,754	13,047	4,707	3,793,575	471	1,248	789	459	284,304
Montgomery	231	644	449	195	108,145	0	0	0	0	0
Nassau	2,522	5,723	4,394	1,329	1,811,962	41	110	67	43	17,851
Niagara	1,424	3,422	2,373	1,049	581,157	47	137	80	57	18,934
Oneida	1,437	4,019	2,931	1,088	665,264	30	93	58	35	13,515
Onondaga	3,808	9,679	6,953	2,726	1,753,904	27	71	40	31	17,724
Ontario	363	833	578	255	167,669	6	15	6	9	4,545
Orange	1,632	4,148	3,091	1,057	882,800	22	54	29	25	18,279
Orleans	298	786	533	253	134,802	3	6	2	4	1,730
Oswego	545	1,291	951	340	248,137	11	27	16	11	4,884
Otsego	68	124	110	14	29,556	5	10	5	5	2,136
Putnam	62	137	99	38	62,464	1	2	1	1	1,715
Rensselaer	911	2,226	1,516	710	437,626	20	56	38	18	11,427
Rockland	585	1,657	1,297	360	321,022	12	36	25	11	5,666
St.Lawrence	634	1,445	953	492	262,601	3	9	5	4	684
Saratoga	177	304	275	29	76,400	1	4	3	1	673
Schenectady	705	1,609	1,244	365	357,249	17	46	28	18	11,972
Schoharie	62	133	106	27	34,831	0	0	0	0	0
Schuyler	97	254	177	77	41,087	0	0	0	0	0
Seneca	102	230	160	70	40,608	3	9	5	4	2,278
Steuben	510	1,214	812	402	214,018	5	11	6	5	1,742
Suffolk	3,648	9,133	6,865	2,268	4,132,427	79	235	143	92	112,167
Sullivan	432	1,079	794	285	221,658	2	7	4	3	1,182
Tioga	249	555	389	166	106,565	3	6	2	4	4,593
Tompkins	385	927	637	290	204,799	14	29	17	12	8,002
Ulster	859	1,960	1,438	522	451,399	44	118	68	50	24,632
Warren	163	375	261	114	74,339	2	8	6	2	1,362
Washington	206	418	297	121	90,681	4	10	6	4	1,541
Wayne	309	718	535	183	149,093	5	16	10	6	2,645
Westchester	4,590	10,986	7,774	3,212	4,120,230	87	213	123	90	152,221
Wyoming	93	191	136	55	34,798	3	7	5	2	503
Yates	53	116	82	34	21,866	0	0	0	0	0

* Expenditures partially estimated.

Table 10
SAFETY NET ASSISTANCE-FNP
Cases, Recipients, Children, Adults and Expenditures by Local District
April 2002

Local District	Safety Net Assistance-FNP				
	Cases	Recipients	Children	Adults	Expenditures
New York State	150,076	264,117	105,561	158,556	\$63,571,663
New York City*	112,861	207,241	86,222	121,019	44,524,000
Rest of State	37,215	56,876	19,339	37,537	19,047,663
Albany	1,393	1,941	533	1,408	805,311
Allegany	157	246	81	165	54,234
Broome	788	1,085	299	786	363,716
Cattaraugus	219	271	49	222	86,521
Cayuga	99	142	40	102	48,099
Chautauqua	831	1,148	319	829	284,124
Chemung	295	408	114	294	116,312
Chenango	63	76	14	62	24,558
Clinton	252	291	40	251	113,374
Columbia	136	145	10	135	56,432
Cortland	157	185	29	156	59,035
Delaware	52	57	4	53	21,626
Dutchess	515	627	148	479	250,893
Erie	5,352	8,712	3,266	5,446	2,020,318
Essex	61	74	11	63	17,753
Franklin	102	147	41	106	37,781
Fulton	133	141	2	139	60,219
Genesee	115	129	23	106	44,028
Greene	149	173	24	149	59,078
Hamilton	12	13	0	13	4,316
Herkimer	92	104	16	88	37,194
Jefferson	427	566	127	439	195,331
Lewis	41	49	11	38	14,987
Livingston	228	258	30	228	89,380
Madison	41	45	5	40	17,524
Monroe	6,285	10,849	4,530	6,319	2,968,726
Montgomery	139	157	17	140	70,220
Nassau	1,700	2,508	800	1,708	943,279
Niagara	962	1,576	607	969	374,091
Oneida	787	1,230	427	803	339,813
Onondaga	2,245	3,251	1,061	2,190	915,037
Ontario	292	351	61	290	139,224
Orange	922	1,731	781	950	497,162
Orleans	205	289	81	208	81,268
Oswego	222	279	58	221	110,494
Otsego	75	83	7	76	45,382
Putnam	67	72	8	64	38,008
Rensselaer	367	452	80	372	168,710
Rockland	542	1,325	691	634	287,986
St.Lawrence	375	523	150	373	134,696
Saratoga	110	120	20	100	65,360
Schenectady	343	468	133	335	185,359
Schoharie	37	38	3	35	28,916
Schuyler	40	50	6	44	21,944
Seneca	60	88	32	56	24,289
Steuben	383	487	98	389	138,161
Suffolk	3,735	5,353	1,607	3,746	2,194,956
Sullivan	172	209	37	172	78,310
Tioga	82	107	24	83	32,976
Tompkins	279	335	54	281	134,460
Ulster	329	409	88	321	156,107
Warren	112	125	9	116	42,944
Washington	140	155	26	129	78,228
Wayne	224	237	24	213	91,690
Westchester	4,153	6,864	2,578	4,286	3,737,563
Wyoming	69	69	2	67	22,196
Yates	52	53	3	50	17,964

* Expenditures partially estimated.

Table 11
SAFETY NET ASSISTANCE-FNP BY CASE CATEGORY
(Maintenance of Effort (MOE) vs. Non-Maintenance of Effort (Non-MOE))
Cases, Recipients, Children, Adults and Expenditures by Local District
April 2002

Local District	Maintenance of Effort (MOE)					Non-Maintenance of Effort (Non-MOE)				
	Cases	Recipients	Children	Adults	Expenditures	Cases	Recipients	Children	Adults	Expenditures
New York State	42,269	143,616	95,857	47,759	\$22,353,288	107,807	120,501	9,704	110,797	\$41,218,375
New York City*	36,556	121,432	79,970	41,462	18,461,000	76,305	85,809	6,252	79,557	26,063,000
Rest of State	5,713	22,184	15,887	6,297	3,892,288	31,502	34,692	3,452	31,240	15,155,375
Albany	151	601	442	159	94,899	1,242	1,340	91	1,249	710,412
Allegany	29	104	71	33	10,323	128	142	10	132	43,911
Broome	82	335	242	93	39,202	706	750	57	693	324,514
Cattaraugus	12	32	16	16	3,263	207	239	33	206	83,258
Cayuga	11	50	35	15	4,798	88	92	5	87	43,301
Chautauqua	100	343	251	92	46,887	731	805	68	737	237,237
Chemung	24	114	83	31	12,274	271	294	31	263	104,038
Chenango	4	13	9	4	1,137	59	63	5	58	23,421
Clinton	9	28	17	11	3,201	243	263	23	240	110,173
Columbia	3	7	4	3	860	133	138	6	132	55,572
Cortland	8	32	23	9	3,973	149	153	6	147	55,062
Delaware	0	0	0	0	0	52	57	4	53	21,626
Dutchess	29	104	76	28	13,448	486	523	72	451	237,445
Erie	1,032	3,963	2,836	1,127	449,503	4,320	4,749	430	4,319	1,570,815
Essex	4	13	10	3	1,498	57	61	1	60	16,255
Franklin	18	55	36	19	7,544	84	92	5	87	30,237
Fulton	2	2	0	2	443	131	139	2	137	59,776
Genesee	4	13	10	3	971	111	116	13	103	43,057
Greene	1	7	6	1	419	148	166	18	148	58,659
Hamilton	0	0	0	0	0	12	13	0	13	4,316
Herkimer	2	8	6	2	2,196	90	96	10	86	34,998
Jefferson	48	158	106	52	28,341	379	408	21	387	166,990
Lewis	3	9	6	3	1,306	38	40	5	35	13,681
Livingston	10	31	20	11	3,470	218	227	10	217	85,910
Madison	0	0	0	0	0	41	45	5	40	17,524
Monroe	1,445	5,564	4,046	1,518	819,591	4,840	5,285	484	4,801	2,149,135
Montgomery	6	20	14	6	1,728	133	137	3	134	68,492
Nassau	253	896	628	268	183,958	1,447	1,612	172	1,440	759,321
Niagara	190	736	522	214	79,109	772	840	85	755	294,982
Oneida	110	457	335	122	44,309	677	773	92	681	295,504
Onondaga	257	1,059	785	274	123,367	1,988	2,192	276	1,916	791,670
Ontario	18	63	44	19	7,741	274	288	17	271	131,483
Orange	177	889	662	227	98,999	745	842	119	723	398,163
Orleans	6	23	17	6	4,193	199	266	64	202	77,075
Oswego	11	46	34	12	5,140	211	233	24	209	105,354
Otsego	1	7	5	2	371	74	76	2	74	45,011
Putnam	0	0	0	0	0	67	72	8	64	38,008
Rensselaer	22	66	45	21	9,056	345	386	35	351	159,654
Rockland	106	679	501	178	57,674	436	646	190	456	230,312
St.Lawrence	45	168	119	49	17,746	330	355	31	324	116,950
Saratoga	2	7	5	2	955	108	113	15	98	64,405
Schenectady	20	88	65	23	9,585	323	380	68	312	175,774
Schoharie	0	0	0	0	0	37	38	3	35	28,916
Schuyler	0	0	0	0	0	40	50	6	44	21,944
Seneca	7	30	23	7	2,523	53	58	9	49	21,766
Steuben	31	105	71	34	14,851	352	382	27	355	123,310
Suffolk	452	1,786	1,277	509	720,220	3,283	3,567	330	3,237	1,474,736
Sullivan	11	41	27	14	4,405	161	168	10	158	73,905
Tioga	10	32	21	11	4,455	72	75	3	72	28,521
Tompkins	17	54	36	18	7,671	262	281	18	263	126,789
Ulster	21	86	63	23	10,595	308	323	25	298	145,512
Warren	1	2	1	1	697	111	123	8	115	42,247
Washington	3	13	10	3	1,218	137	142	16	126	77,010
Wayne	3	11	8	3	1,086	221	226	16	210	90,604
Westchester	902	3,234	2,218	1,016	931,089	3,251	3,630	360	3,270	2,806,474
Wyoming	0	0	0	0	0	69	69	2	67	22,196
Yates	0	0	0	0	0	52	53	3	50	17,964

* Expenditures partially estimated.

Table 12
SAFETY NET ASSISTANCE-FNP-CASH TOTAL
Cases, Recipients, Children, Adults and Expenditures by Local District
April 2002

Local District	Safety Net Assistance-FNP-Cash Total				
	Cases	Recipients	Children	Adults	Expenditures
New York State	See Note	See Note	See Note	See Note	See Note
New York City	See Note	See Note	See Note	See Note	See Note
Rest of State	21,491	24,317	2,968	21,349	\$10,040,490
Albany	955	1,095	137	958	510,200
Allegany	109	122	11	111	35,221
Broome	476	515	52	463	198,286
Cattaraugus	163	189	26	163	67,506
Cayuga	70	80	10	70	26,952
Chautauqua	552	602	40	562	175,984
Chemung	221	235	17	218	78,770
Chenango	49	53	4	49	19,194
Clinton	209	223	13	210	90,886
Columbia	112	115	3	112	38,286
Cortland	106	119	11	108	37,185
Delaware	43	47	3	44	15,252
Dutchess	269	304	55	249	139,532
Erie	2,284	2,629	355	2,274	846,294
Essex	51	55	1	54	15,452
Franklin	71	74	1	73	24,583
Fulton	99	105	1	104	40,800
Genesee	81	86	12	74	27,697
Greene	116	120	1	119	38,964
Hamilton	12	13	0	13	4,316
Herkimer	70	73	7	66	22,668
Jefferson	265	297	26	271	106,414
Lewis	28	31	4	27	7,607
Livingston	167	177	11	166	60,897
Madison	40	44	5	39	16,574
Monroe	2,717	3,216	540	2,676	1,170,284
Montgomery	103	108	4	104	55,227
Nassau	1,106	1,170	53	1,117	526,812
Niagara	461	513	69	444	155,798
Oneida	512	623	102	521	203,857
Onondaga	1,685	1,971	325	1,646	658,766
Ontario	211	218	9	209	89,785
Orange	500	582	73	509	210,299
Orleans	163	183	19	164	61,320
Oswego	163	178	17	161	71,883
Otsego	57	59	2	57	28,448
Putnam	41	45	3	42	17,310
Rensselaer	240	254	9	245	96,245
Rockland	201	259	56	203	101,124
St.Lawrence	270	289	27	262	83,294
Saratoga	92	102	19	83	49,196
Schenectady	215	248	42	206	111,370
Schoharie	29	30	3	27	20,945
Schuyler	32	42	6	36	17,237
Seneca	30	30	2	28	8,682
Steuben	283	301	17	284	83,708
Suffolk	2,642	2,974	349	2,625	1,292,812
Sullivan	118	129	13	116	49,897
Tioga	67	69	1	68	23,830
Tompkins	156	179	23	156	62,317
Ulster	174	183	15	168	77,030
Warren	90	98	3	95	28,121
Washington	119	123	12	111	63,141
Wayne	166	171	16	155	61,205
Westchester	2,124	2,460	328	2,132	1,880,877
Wyoming	58	58	2	56	17,328
Yates	48	49	3	46	16,822

Note: A breakout of Safety Net Assistance-FNP-Cash and Safety Net Assistance-FNP-Non-Cash data is not available for New York City.

Table 13
SAFETY NET ASSISTANCE-FNP-CASH BY CASE CATEGORY
(Maintenance of Effort (MOE) vs. Non-Maintenance of Effort (Non-MOE))
Cases, Recipients, Children, Adults and Expenditures by Local District
April 2002

Local District	Maintenance of Effort (MOE)					Non-Maintenance of Effort (Non-MOE)				
	Cases	Recipients	Children	Adults	Expenditures	Cases	Recipients	Children	Adults	Expenditures
New York State	See Note	See Note	See Note	See Note	See Note	See Note	See Note	See Note	See Note	See Note
New York City	See Note	See Note	See Note	See Note	See Note	See Note	See Note	See Note	See Note	See Note
Rest of State	712	2,224	1,416	808	\$476,842	20,779	22,093	1,552	20,541	\$9,563,648
Albany	38	146	105	41	24,635	917	949	32	917	485,565
Allegany	4	11	7	4	1,068	105	111	4	107	34,153
Broome	8	20	11	9	3,316	468	495	41	454	194,970
Cattaraugus	1	5	3	2	369	162	184	23	161	67,137
Cayuga	2	10	7	3	1,040	68	70	3	67	25,912
Chautauqua	6	14	7	7	1,193	546	588	33	555	174,791
Chemung	2	6	4	2	732	219	229	13	216	78,038
Chenango	1	4	3	1	394	48	49	1	48	18,800
Clinton	3	9	4	5	646	206	214	9	205	90,240
Columbia	2	2	0	2	424	110	113	3	110	37,862
Cortland	2	11	8	3	1,363	104	108	3	105	35,822
Delaware	0	0	0	0	0	43	47	3	44	15,252
Dutchess	6	21	15	6	2,567	263	283	40	243	136,965
Erie	88	285	186	99	41,327	2,196	2,344	169	2,175	804,967
Essex	0	0	0	0	0	51	55	1	54	15,452
Franklin	1	2	1	1	180	70	72	0	72	24,403
Fulton	2	2	0	2	443	97	103	1	102	40,357
Genesee	0	0	0	0	0	81	86	12	74	27,697
Greene	0	0	0	0	0	116	120	1	119	38,964
Hamilton	0	0	0	0	0	12	13	0	13	4,316
Herkimer	1	2	1	1	429	69	71	6	65	22,239
Jefferson	7	23	16	7	4,122	258	274	10	264	102,292
Lewis	1	2	1	1	228	27	29	3	26	7,379
Livingston	1	3	2	1	211	166	174	9	165	60,686
Madison	0	0	0	0	0	40	44	5	39	16,574
Monroe	162	502	321	181	88,001	2,555	2,714	219	2,495	1,082,283
Montgomery	2	6	4	2	667	101	102	0	102	54,560
Nassau	17	32	13	19	7,731	1,089	1,138	40	1,098	519,081
Niagara	15	47	28	19	5,136	446	466	41	425	150,662
Oneida	20	68	45	23	10,116	492	555	57	498	193,741
Onondaga	54	207	143	64	25,803	1,631	1,764	182	1,582	632,963
Ontario	1	1	0	1	344	210	217	9	208	89,441
Orange	25	85	57	28	11,289	475	497	16	481	199,010
Orleans	3	10	7	3	2,041	160	173	12	161	59,279
Oswego	3	10	7	3	1,509	160	168	10	158	70,374
Otsego	0	0	0	0	0	57	59	2	57	28,448
Putnam	0	0	0	0	0	41	45	3	42	17,310
Rensselaer	1	1	0	1	137	239	253	9	244	96,108
Rockland	12	45	32	13	6,292	189	214	24	190	94,832
St.Lawrence	4	12	8	4	946	266	277	19	258	82,348
Saratoga	2	7	5	2	955	90	95	14	81	48,241
Schenectady	3	11	7	4	1,401	212	237	35	202	109,969
Schoharie	0	0	0	0	0	29	30	3	27	20,945
Schuyler	0	0	0	0	0	32	42	6	36	17,237
Seneca	0	0	0	0	0	30	30	2	28	8,682
Steuben	4	8	4	4	1,196	279	293	13	280	82,512
Suffolk	58	178	106	72	116,951	2,584	2,796	243	2,553	1,175,861
Sullivan	2	7	4	3	562	116	122	9	113	49,335
Tioga	2	2	0	2	479	65	67	1	66	23,351
Tompkins	4	13	8	5	1,641	152	166	15	151	60,676
Ulster	2	8	5	3	564	172	175	10	165	76,466
Warren	0	0	0	0	0	90	98	3	95	28,121
Washington	0	0	0	0	0	119	123	12	111	63,141
Wayne	1	1	0	1	278	165	170	16	154	60,927
Westchester	139	385	231	154	108,116	1,985	2,075	97	1,978	1,772,761
Wyoming	0	0	0	0	0	58	58	2	56	17,328
Yates	0	0	0	0	0	48	49	3	46	16,822

Note: Data from New York City does not allow the separation of Safety Net-FNP-Cash and Safety Net-FNP-Non-Cash data.

Table 14
SAFETY NET ASSISTANCE-FNP-NON-CASH TOTAL
Cases, Recipients, Children, Adults and Expenditures by Local District
April 2002

Local District	Safety Net Assistance-FNP-Non-Cash Total				
	Cases	Recipients	Children	Adults	Expenditures
New York State	See Note	See Note	See Note	See Note	See Note
New York City	See Note	See Note	See Note	See Note	See Note
Rest of State	15,724	32,559	16,371	16,188	\$9,007,173
Albany	438	846	396	450	295,111
Allegany	48	124	70	54	19,013
Broome	312	570	247	323	165,430
Cattaraugus	56	82	23	59	19,015
Cayuga	29	62	30	32	21,147
Chautauqua	279	546	279	267	108,140
Chemung	74	173	97	76	37,542
Chenango	14	23	10	13	5,364
Clinton	43	68	27	41	22,488
Columbia	24	30	7	23	18,146
Cortland	51	66	18	48	21,850
Delaware	9	10	1	9	6,374
Dutchess	246	323	93	230	111,361
Erie	3,068	6,083	2,911	3,172	1,174,024
Essex	10	19	10	9	2,301
Franklin	31	73	40	33	13,198
Fulton	34	36	1	35	19,419
Genesee	34	43	11	32	16,331
Greene	33	53	23	30	20,114
Hamilton	0	0	0	0	0
Herkimer	22	31	9	22	14,526
Jefferson	162	269	101	168	88,917
Lewis	13	18	7	11	7,380
Livingston	61	81	19	62	28,483
Madison	1	1	0	1	950
Monroe	3,568	7,633	3,990	3,643	1,798,442
Montgomery	36	49	13	36	14,993
Nassau	594	1,338	747	591	416,467
Niagara	501	1,063	538	525	218,293
Oneida	275	607	325	282	135,956
Onondaga	560	1,280	736	544	256,271
Ontario	81	133	52	81	49,439
Orange	422	1,149	708	441	286,863
Orleans	42	106	62	44	19,948
Oswego	59	101	41	60	38,611
Otsego	18	24	5	19	16,934
Putnam	26	27	5	22	20,698
Rensselaer	127	198	71	127	72,465
Rockland	341	1,066	635	431	186,862
St.Lawrence	105	234	123	111	51,402
Saratoga	18	18	1	17	16,164
Schenectady	128	220	91	129	73,989
Schoharie	8	8	0	8	7,971
Schuyler	8	8	0	8	4,707
Seneca	30	58	30	28	15,607
Steuben	100	186	81	105	54,453
Suffolk	1,093	2,379	1,258	1,121	902,144
Sullivan	54	80	24	56	28,413
Tioga	15	38	23	15	9,146
Tompkins	123	156	31	125	72,143
Ulster	155	226	73	153	79,077
Warren	22	27	6	21	14,823
Washington	21	32	14	18	15,087
Wayne	58	66	8	58	30,485
Westchester	2,029	4,404	2,250	2,154	1,856,686
Wyoming	11	11	0	11	4,868
Yates	4	4	0	4	1,142

Note: A breakout of Safety Net Assistance-FNP-Cash and Safety Net Assistance-FNP-Non-Cash data is not available for New York City.

Table 15
SAFETY NET ASSISTANCE-FNP-NON-CASH BY CASE CATEGORY
(Maintenance of Effort (MOE) vs. Non-Maintenance of Effort (Non-MOE))
Cases, Recipients, Children, Adults and Expenditures by Local District
April 2002

Local District	Maintenance of Effort (MOE)					Non-Maintenance of Effort (Non-MOE)				
	Cases	Recipients	Children	Adults	Expenditures	Cases	Recipients	Children	Adults	Expenditures
New York State	See Note	See Note	See Note	See Note	See Note	See Note	See Note	See Note	See Note	See Note
New York City	See Note	See Note	See Note	See Note	See Note	See Note	See Note	See Note	See Note	See Note
Rest of State	5,001	19,960	14,471	5,489	\$3,415,446	10,723	12,599	1,900	10,699	\$5,591,727
Albany	113	455	337	118	70,264	325	391	59	332	224,847
Allegany	25	93	64	29	9,255	23	31	6	25	9,758
Broome	74	315	231	84	35,886	238	255	16	239	129,544
Cattaraugus	11	27	13	14	2,894	45	55	10	45	16,121
Cayuga	9	40	28	12	3,758	20	22	2	20	17,389
Chautauqua	94	329	244	85	45,694	185	217	35	182	62,446
Chemung	22	108	79	29	11,542	52	65	18	47	26,000
Chenango	3	9	6	3	743	11	14	4	10	4,621
Clinton	6	19	13	6	2,555	37	49	14	35	19,933
Columbia	1	5	4	1	436	23	25	3	22	17,710
Cortland	6	21	15	6	2,610	45	45	3	42	19,240
Delaware	0	0	0	0	0	9	10	1	9	6,374
Dutchess	23	83	61	22	10,881	223	240	32	208	100,480
Erie	944	3,678	2,650	1,028	408,176	2,124	2,405	261	2,144	765,848
Essex	4	13	10	3	1,498	6	6	0	6	803
Franklin	17	53	35	18	7,364	14	20	5	15	5,834
Fulton	0	0	0	0	0	34	36	1	35	19,419
Genesee	4	13	10	3	971	30	30	1	29	15,360
Greene	1	7	6	1	419	32	46	17	29	19,695
Hamilton	0	0	0	0	0	0	0	0	0	0
Herkimer	1	6	5	1	1,767	21	25	4	21	12,759
Jefferson	41	135	90	45	24,219	121	134	11	123	64,698
Lewis	2	7	5	2	1,078	11	11	2	9	6,302
Livingston	9	28	18	10	3,259	52	53	1	52	25,224
Madison	0	0	0	0	0	1	1	0	1	950
Monroe	1,283	5,062	3,725	1,337	731,590	2,285	2,571	265	2,306	1,066,852
Montgomery	4	14	10	4	1,061	32	35	3	32	13,932
Nassau	236	864	615	249	176,227	358	474	132	342	240,240
Niagara	175	689	494	195	73,973	326	374	44	330	144,320
Oneida	90	389	290	99	34,193	185	218	35	183	101,763
Onondaga	203	852	642	210	97,564	357	428	94	334	158,707
Ontario	17	62	44	18	7,397	64	71	8	63	42,042
Orange	152	804	605	199	87,710	270	345	103	242	199,153
Orleans	3	13	10	3	2,152	39	93	52	41	17,796
Oswego	8	36	27	9	3,631	51	65	14	51	34,980
Otsego	1	7	5	2	371	17	17	0	17	16,563
Putnam	0	0	0	0	0	26	27	5	22	20,698
Rensselaer	21	65	45	20	8,919	106	133	26	107	63,546
Rockland	94	634	469	165	51,382	247	432	166	266	135,480
St.Lawrence	41	156	111	45	16,800	64	78	12	66	34,602
Saratoga	0	0	0	0	0	18	18	1	17	16,164
Schenectady	17	77	58	19	8,184	111	143	33	110	65,805
Schoharie	0	0	0	0	0	8	8	0	8	7,971
Schuyler	0	0	0	0	0	8	8	0	8	4,707
Seneca	7	30	23	7	2,523	23	28	7	21	13,084
Steuben	27	97	67	30	13,655	73	89	14	75	40,798
Suffolk	394	1,608	1,171	437	603,269	699	771	87	684	298,875
Sullivan	9	34	23	11	3,843	45	46	1	45	24,570
Tioga	8	30	21	9	3,976	7	8	2	6	5,170
Tompkins	13	41	28	13	6,030	110	115	3	112	66,113
Ulster	19	78	58	20	10,031	136	148	15	133	69,046
Warren	1	2	1	1	697	21	25	5	20	14,126
Washington	3	13	10	3	1,218	18	19	4	15	13,869
Wayne	2	10	8	2	808	56	56	0	56	29,677
Westchester	763	2,849	1,987	862	822,973	1,266	1,555	263	1,292	1,033,713
Wyoming	0	0	0	0	0	11	11	0	11	4,868
Yates	0	0	0	0	0	4	4	0	4	1,142

Note: Data from New York City does not allow the separation of Safety Net-FNP-Cash and Safety Net-FNP-Non-Cash data.

Table 16
FOOD STAMPS
Households, Persons and Value of Food Stamps Benefits by Local District
April 2002

Local District	Total			Temporary Assistance			Non-Temporary Assistance		
	Households	Persons	Food Stamps Benefits	Households	Persons	Food Stamps Benefits	Households	Persons	Food Stamps Benefits
New York State	683,994	1,351,135	\$123,732,057	474,902	842,784	\$84,327,901	209,092	508,351	\$39,404,156
New York City	429,459	822,530	81,386,498	350,078	641,166	66,343,078	79,381	181,364	15,043,420
Rest of State	254,535	528,605	42,345,559	124,824	201,618	17,984,823	129,711	326,987	24,360,736
Albany	8,603	17,363	1,438,730	4,891	8,209	767,340	3,712	9,154	671,390
Allegany	1,815	3,717	272,875	863	1,388	113,401	952	2,329	159,474
Broome	6,157	12,248	975,368	3,086	4,913	446,036	3,071	7,335	529,332
Cattaraugus	3,030	6,047	433,123	1,192	1,660	135,724	1,838	4,387	297,399
Cayuga	2,140	4,750	366,038	739	1,021	83,831	1,401	3,729	282,207
Chautauqua	5,661	12,012	988,501	2,903	4,920	470,806	2,758	7,092	517,695
Chemung	2,836	6,142	472,371	1,441	2,339	209,703	1,395	3,803	262,668
Chenango	1,736	3,831	284,651	481	659	55,968	1,255	3,172	228,683
Clinton	3,004	5,692	431,170	1,369	1,752	146,947	1,635	3,940	284,223
Columbia	1,410	2,546	196,462	622	886	80,436	788	1,660	116,026
Cortland	1,614	3,345	262,304	723	1,081	95,803	891	2,264	166,501
Delaware	1,271	2,404	168,056	467	565	41,533	804	1,839	126,523
Dutchess	3,532	6,397	500,480	1,611	2,296	210,622	1,921	4,101	289,858
Erie	36,426	74,409	6,072,063	18,430	30,075	2,800,851	17,996	44,334	3,271,212
Essex	1,173	2,225	157,592	504	671	49,733	669	1,554	107,859
Franklin	1,674	3,512	260,119	663	904	72,516	1,011	2,608	187,603
Fulton	1,982	4,335	334,457	775	1,044	92,008	1,207	3,291	242,449
Genesee	1,328	2,725	206,591	505	695	60,650	823	2,030	145,941
Greene	1,356	2,619	210,694	614	893	84,459	742	1,726	126,235
Hamilton	164	247	11,982	27	33	2,517	137	214	9,465
Herkimer	2,037	4,357	336,605	701	960	77,281	1,336	3,397	259,324
Jefferson	3,762	8,287	640,381	1,599	2,442	201,819	2,163	5,845	438,562
Lewis	840	1,881	129,656	279	371	27,287	561	1,510	102,369
Livingston	1,695	3,299	255,794	761	1,173	111,490	934	2,126	144,304
Madison	1,582	3,306	254,025	553	636	48,246	1,029	2,670	205,779
Monroe	27,774	59,832	4,855,143	15,136	27,991	2,480,568	12,638	31,841	2,374,575
Montgomery	1,949	4,372	355,470	667	955	85,466	1,282	3,417	270,004
Nassau	9,843	17,160	1,422,518	5,980	9,002	807,577	3,863	8,158	614,941
Niagara	6,455	13,289	1,058,988	3,263	5,422	482,459	3,192	7,867	576,529
Oneida	9,518	20,370	1,596,076	3,873	5,980	515,556	5,645	14,390	1,080,520
Onondaga	13,927	31,102	2,579,058	6,837	12,063	1,127,223	7,090	19,039	1,451,835
Ontario	2,357	4,458	333,023	1,009	1,456	126,956	1,348	3,002	206,067
Orange	7,379	18,729	1,622,863	3,016	5,558	531,772	4,363	13,171	1,091,091
Orleans	1,345	2,978	240,766	600	1,018	95,007	745	1,960	145,759
Oswego	3,698	8,842	690,977	1,272	1,825	155,749	2,426	7,017	535,228
Otsego	1,295	2,472	184,704	450	515	37,923	845	1,957	146,781
Putnam	516	712	48,004	296	350	25,221	220	362	22,783
Rensselaer	4,107	8,463	717,749	1,869	2,958	287,855	2,238	5,505	429,894
Rockland	4,784	15,350	1,263,300	1,780	3,331	233,685	3,004	12,019	1,029,615
St. Lawrence	3,575	7,474	554,420	1,638	2,432	205,286	1,937	5,042	349,134
Saratoga	2,830	5,465	410,070	929	1,040	81,843	1,901	4,425	328,227
Schenectady	4,189	8,951	707,435	1,720	2,502	221,746	2,469	6,449	485,689
Schoharie	810	1,643	120,188	266	314	22,404	544	1,329	97,784
Schuyler	496	1,075	81,737	218	360	31,486	278	715	50,251
Seneca	867	1,709	124,815	330	464	37,198	537	1,245	87,617
Steuben	2,996	6,388	486,620	1,332	2,023	176,941	1,664	4,365	309,679
Suffolk	15,127	27,246	2,218,519	9,224	14,432	1,247,308	5,903	12,814	971,211
Sullivan	2,250	4,564	333,362	1,048	1,515	124,160	1,202	3,049	209,202
Tioga	1,117	2,478	188,388	491	764	68,332	626	1,714	120,056
Tompkins	1,965	3,735	280,250	982	1,474	120,468	983	2,261	159,782
Ulster	3,502	6,477	477,024	1,852	2,809	233,815	1,650	3,668	243,209
Warren	1,687	3,161	242,425	804	1,135	94,197	883	2,026	148,228
Washington	1,691	3,362	252,757	650	835	68,324	1,041	2,527	184,433
Wayne	2,519	4,733	357,814	1,053	1,406	121,682	1,466	3,327	236,132
Westchester	15,573	31,306	2,660,490	9,881	17,417	1,590,415	5,692	13,889	1,070,075
Wyoming	802	1,600	116,599	314	396	33,578	488	1,204	83,021
Yates	764	1,413	103,919	245	290	25,616	519	1,123	78,303

Note: Food Stamps households containing only SSI recipients are counted as TA in accordance with Federal reporting requirements.

Note: Rest of State data does not include the following FAP data: 39 households, 41 persons, and \$4,811 in expenditures.

Table 17
SUPPLEMENTAL SECURITY INCOME
 Recipients, Total Program Expenditures, Federal and State Shares, by Local District
 April 2002

Local District	Expenditures			
	Recipients	Total	Federal	State
New York State*	625,907	\$293,484,358	\$245,338,541	\$48,145,817
New York City	398,122	192,795,495	164,817,626	27,977,869
Rest of State	217,882	97,086,245	78,195,318	18,890,927
Albany	6,185	2,771,339	2,204,768	566,571
Allegany	1,429	628,805	510,440	118,365
Broome	5,099	2,302,065	1,904,890	397,175
Cattaraugus	2,310	992,720	811,955	180,765
Cayuga	1,750	747,555	589,313	158,242
Chautauqua	3,920	1,737,777	1,426,519	311,258
Chemung	2,797	1,228,846	1,013,990	214,856
Chenango	1,325	552,249	468,983	83,266
Clinton	2,460	1,024,473	836,700	187,773
Columbia	1,478	614,168	469,528	144,640
Cortland	1,169	510,862	417,439	93,423
Delaware	1,180	474,593	379,361	95,232
Dutchess	4,301	1,883,900	1,424,493	459,407
Erie	24,869	11,325,140	9,297,108	2,028,032
Essex	947	380,919	281,380	99,539
Franklin	1,577	675,475	536,818	138,657
Fulton	1,625	695,530	558,075	137,455
Genesee	988	383,962	299,934	84,028
Greene	1,073	450,291	361,296	88,995
Hamilton	74	25,707	21,029	4,678
Herkimer	1,534	612,168	494,025	118,143
Jefferson	2,873	1,332,696	1,098,377	234,319
Lewis	624	251,021	204,026	46,995
Livingston	918	417,186	349,705	67,481
Madison	1,226	491,661	382,417	109,244
Monroe	17,810	8,424,672	6,916,438	1,508,234
Montgomery	1,320	510,371	414,160	96,211
Nassau	16,636	7,315,948	5,735,325	1,580,623
Niagara	4,776	2,171,813	1,754,068	417,745
Oneida	7,110	3,207,036	2,649,649	557,387
Onondaga	11,157	5,147,605	4,312,834	834,771
Ontario	1,526	653,209	524,360	128,849
Orange	5,947	2,589,554	2,114,242	475,312
Orleans	900	365,214	302,185	63,029
Oswego	2,883	1,307,747	1,099,824	207,923
Otsego	1,292	556,183	432,111	124,072
Putnam	728	356,439	249,192	107,247
Rensselaer	3,150	1,373,165	1,099,215	273,950
Rockland	4,386	1,973,567	1,435,717	537,850
St.Lawrence	3,645	1,676,168	1,407,553	268,615
Saratoga	2,452	1,011,333	809,073	202,260
Schenectady	3,742	1,701,698	1,382,283	319,415
Schoharie	696	281,643	211,641	70,002
Schuyler	455	189,681	149,883	39,798
Seneca	698	297,077	239,541	57,536
Steuben	2,920	1,313,236	1,104,172	209,064
Suffolk	20,614	9,173,296	7,086,163	2,087,133
Sullivan	2,506	1,131,677	834,672	297,005
Tioga	999	460,533	395,829	64,704
Tompkins	1,488	662,018	517,972	144,046
Ulster	3,933	1,716,519	1,380,266	336,253
Warren	1,402	530,382	422,438	107,944
Washington	1,381	588,713	474,397	114,316
Wayne	1,792	770,948	631,055	139,893
Westchester	14,752	6,688,194	5,424,166	1,264,028
Wyoming	621	242,819	194,503	48,316
Yates	434	186,679	147,822	38,857
Mental Hygiene	9,903	3,602,618	2,325,597	1,277,021

* Only NYS includes Mental Hygiene

Table 18
SUPPLEMENTAL SECURITY INCOME
 SSI Recipients by Living Arrangement and Location
 April 2002

Living Arrangement	New York State	New York City	Rest of State	Mental Hygiene
Living Alone	325,639	223,664	101,933	42
Living With Others	212,515	133,606	78,888	21
Living in Household of Another	24,219	15,468	8748	3
Congregate Care Level I	5,635	607	449	4,579
Congregate Care Level II	36,667	14,129	21,971	567
Congregate Care Level III	159	36	123	0
Title XIX Institution	21,073	10,612	5,770	4,691
Total	625,907	398,122	217,882	9,903

Table 19
SUPPLEMENTAL SECURITY INCOME
 SSI Recipients by Living Arrangement and Category of Assistance
 April 2002

Living Arrangement	Total	Category of Assistance		
		Aged	Blind	Disabled
Living Alone	325,639	100,890	1,662	223,087
Living With Others	212,515	17,408	1,093	194,014
Living in Household of Another	24,219	9,995	163	14,061
Congregate Care Level I	5,635	286	26	5,323
Congregate Care Level II	36,667	4,957	188	31,522
Congregate Care Level III	159	1	0	158
Title XIX Institution	21,073	3,386	129	17,558
Total	625,907	136,923	3,261	485,723

Table 20
CHILD SUPPORT COLLECTIONS (IV-D)
April 2002

Local District	Total	Current Assistance	Former Assistance	Never Assistance
New York State	\$106,609,345	\$8,541,543	\$42,622,600	\$55,445,202
New York City	38,906,779	4,529,782	17,489,864	16,887,133
Rest of State	67,702,566	4,011,761	25,132,736	38,558,069
Albany	1,955,748	96,205	616,877	1,242,666
Allegany	455,244	50,304	253,950	150,990
Broome	1,246,552	78,174	491,663	676,715
Cattaraugus	732,057	57,500	355,892	318,665
Cayuga	614,373	19,506	220,900	373,968
Chautauqua	1,171,046	103,684	694,702	372,660
Chemung	870,246	53,085	373,218	443,942
Chenango	428,426	19,411	137,610	271,405
Clinton	613,948	27,517	266,955	319,475
Columbia	392,997	15,935	137,260	239,802
Cortland	376,605	13,500	146,930	216,174
Delaware	358,493	15,351	127,359	215,784
Dutchess	1,939,109	76,609	531,934	1,330,566
Erie	4,879,142	340,166	2,635,736	1,903,239
Essex	273,548	11,944	156,185	105,419
Franklin	445,717	13,735	198,605	233,376
Fulton	455,678	20,244	168,723	266,712
Genesee	422,512	11,962	150,976	259,574
Greene	372,672	17,345	151,828	203,499
Hamilton	41,133	717	16,577	23,839
Herkimer	539,158	22,428	233,652	283,079
Jefferson	975,840	69,632	374,502	531,706
Lewis	217,352	7,475	83,756	126,121
Livingston	518,155	32,445	177,273	308,437
Madison	430,708	18,479	148,648	263,581
Monroe	4,730,220	443,460	2,180,305	2,106,455
Montgomery	425,567	24,047	195,233	206,287
Nassau	5,802,490	271,888	1,336,965	4,193,637
Niagara	1,535,411	110,863	840,731	583,817
Oneida	1,190,944	91,925	551,561	547,458
Onondaga	3,279,023	221,378	1,519,237	1,538,408
Ontario	783,029	35,545	255,640	491,845
Orange	2,269,704	146,655	651,415	1,471,635
Orleans	284,588	19,176	131,136	134,276
Oswego	1,045,923	47,546	523,790	474,586
Otsego	403,629	11,369	115,717	276,542
Putnam	470,059	5,205	72,838	392,015
Rensselaer	1,179,524	64,520	428,784	686,220
Rockland	1,497,243	63,812	391,601	1,041,831
St. Lawrence	823,092	47,902	420,788	354,402
Saratoga	1,234,927	18,819	251,695	964,413
Schenectady	1,054,420	41,574	308,627	704,219
Schoharie	259,404	11,444	100,217	147,743
Schuyler	139,614	9,063	45,023	85,529
Seneca	297,391	11,117	96,949	189,325
Steuben	744,397	34,775	374,351	335,272
Suffolk	8,453,116	486,892	2,373,034	5,593,190
Sullivan	500,562	32,642	205,649	262,271
Tioga	368,724	19,716	156,299	192,709
Tompkins	560,544	35,802	245,806	278,936
Ulster	1,112,735	52,682	331,151	728,903
Warren	621,778	21,808	198,872	401,098
Washington	523,679	20,455	175,515	327,709
Wayne	768,843	20,874	215,198	532,771
Westchester	4,122,793	376,581	1,389,789	2,356,423
Wyoming	320,374	15,463	127,852	177,060
Yates	172,359	3,412	69,258	99,689

Note: Effective February 1999, collection amounts include collections made on behalf of other states.