



NEW YORK STATE  
OFFICE OF TEMPORARY AND DISABILITY ASSISTANCE  
40 North Pearl Street, Albany, New York 12243-0001

George E. Pataki  
*Governor*

Brian J. Wing  
*Commissioner*

---

# Temporary and Disability Assistance Statistics May 2002

---

## Temporary Assistance

Temporary Assistance: Temporary Assistance recipients totaled 624,750 in May 2002, decreasing 3,258 (-0.5%) from the previous month. Related expenditures totaled \$142,176,458 in May 2002, decreasing approximately \$1.8 million (-1.2%) over April 2002.

## Food Stamps

Food Stamps: Recipients of Food Stamps numbered 1,351,125 in May 2002, decreasing by just 10 over April 2002. Food Stamps expenditures totaled \$123,879,191 in May 2002, increasing \$1.5k (+0.1%) over the previous month.

## Supplemental Security Income

Supplemental Security Income: For May 2002, SSI recipients (including Mental Hygiene) totaled 626,666 increasing 759 (+0.1) from the previous month. SSI expenditures in May totaled \$290,350,166 decreasing (-1.1) from April 2002.

# Table of Contents

Page Number

Graphs.....3

Summary Tables.....4

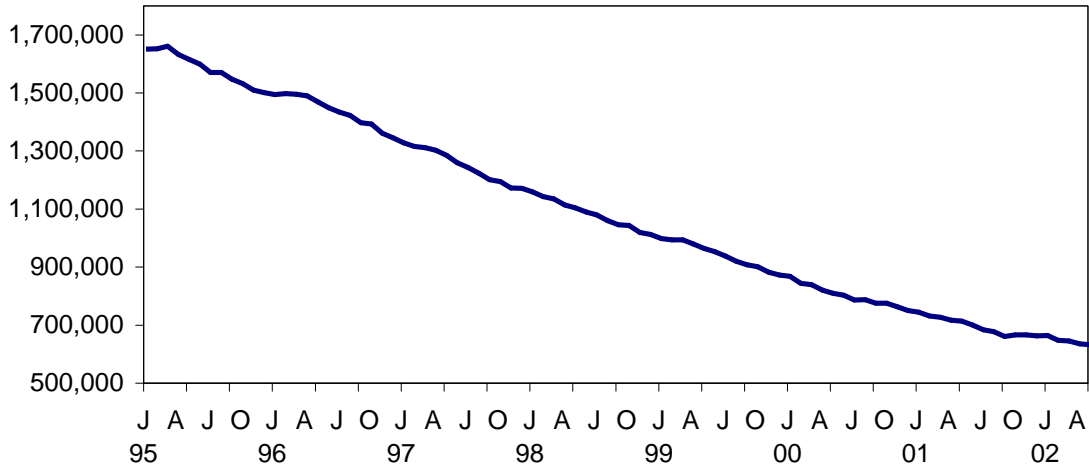
Temporary Assistance  
by Program Area.....5

Temporary Assistance  
by Funding Source.....9

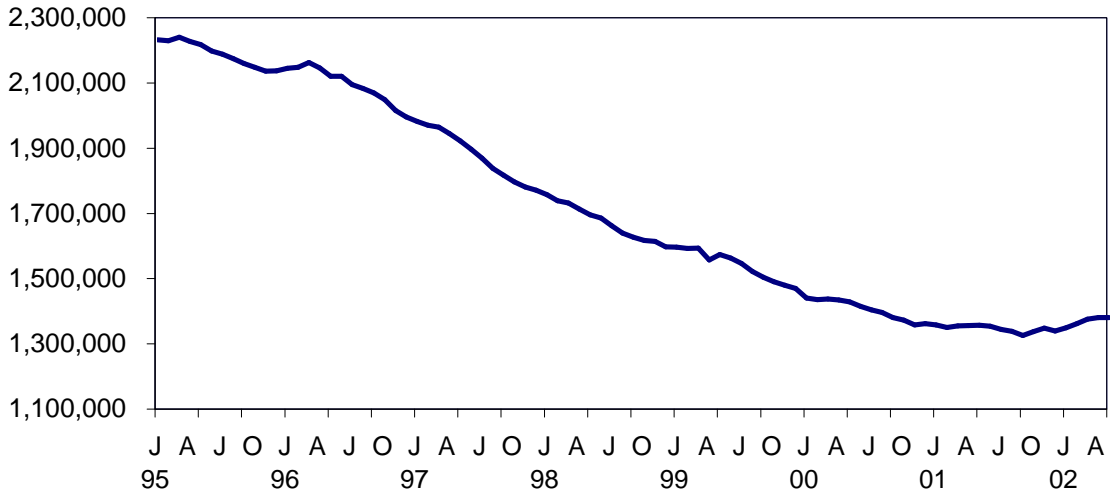
Other Programs.....17

# NEW YORK STATE JANUARY 1995 - MAY 2002

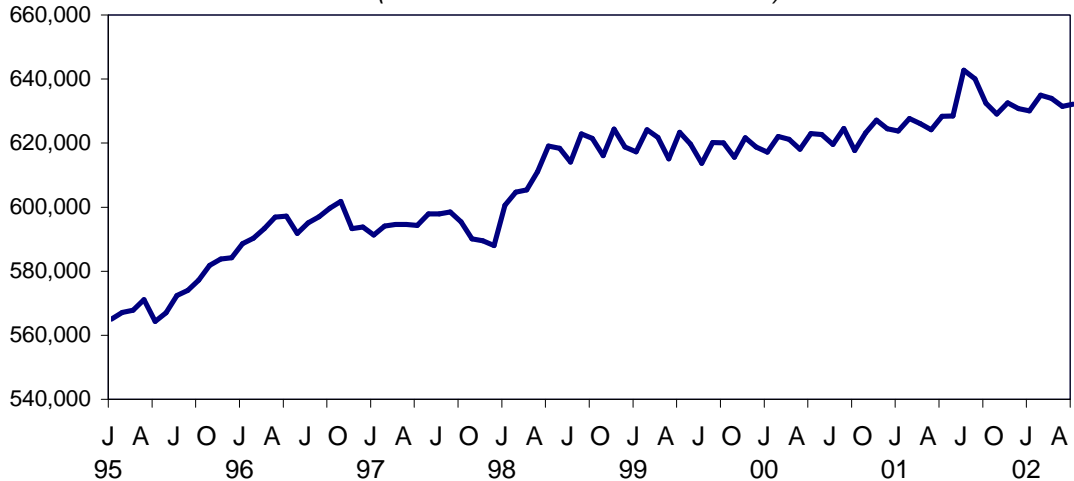
## TEMPORARY ASSISTANCE RECIPIENTS



## FOOD STAMPS PERSONS



## SSI PERSONS (INCLUDING MENTAL HYGIENE)



SELECTED SUMMARY PROGRAM DATA  
BY REGION

Table 1  
TEMPORARY AND DISABILITY ASSISTANCE CASES  
May 2002

Region	Cases				
	Temporary Assistance by Program			Supplemental Security Income	Food Stamps
	Total	Family Assistance	Safety Net Assistance		
New York State	301,353	149,899	151,454	616,772	0
New York City	210,606	97,939	112,667	398,700	0
Rest of State	90,747	51,960	38,787	218,072	0

Table 2  
TEMPORARY AND DISABILITY ASSISTANCE RECIPIENTS  
May 2002

Region	Recipients				
	Temporary Assistance by Program			Supplemental Security Income	Food Stamps
	Total	Family Assistance	Safety Net Assistance		
New York State	624,750	356,423	268,327	616,772	1,351,125
New York City	435,709	228,720	206,989	398,700	821,179
Rest of State	189,041	127,703	61,338	218,072	529,946

Table 3  
TEMPORARY AND DISABILITY ASSISTANCE EXPENDITURES  
May 2002

Region	Expenditures				
	Temporary Assistance by Program			Supplemental Security Income	Food Stamps
	Total	Family Assistance	Safety Net Assistance		
New York State	\$142,176,458	\$77,671,770	\$64,504,688	\$286,907,202	\$123,879,191
New York City	93,165,000	48,445,000	44,720,000	191,669,336	81,543,734
Rest of State	49,011,458	29,226,770	19,784,688	95,237,866	42,335,457

Note: SSI data listed here do not include Mental Hygiene data. See Tables 17 - 19 for total SSI data.

Table 4  
**TEMPORARY ASSISTANCE**  
 Year to Year Monthly Comparison by Local District  
 Cases, Recipients and Expenditures  
 May 2002

Local District	May 2002			May 2001			May 2000		
	Cases	Recipients	Expenditures	Cases	Recipients	Expenditures	Cases	Recipients	Expenditures
New York State	301,353	624,750	142,176,458	333,077	706,662	154,128,896	370,572	802,472	162,856,370
New York City*	210,606	435,709	93,165,000	241,163	508,061	103,781,000	268,427	576,214	111,794,000
Rest of State	90,747	189,041	49,011,458	91,914	198,601	50,347,896	102,145	226,258	51,062,370
Albany	3,542	7,385	1,935,579	3,283	7,261	1,664,810	3,414	7,625	1,770,499
Allegany	480	1,066	180,232	489	1,106	181,628	547	1,276	195,750
Broome	2,173	4,573	1,012,993	1,920	4,157	897,476	2,305	5,171	993,717
Cattaraugus	621	1,251	242,296	629	1,333	269,197	688	1,476	260,740
Cayuga	405	876	181,963	403	902	166,208	453	982	186,339
Chautauqua	2,288	4,827	960,793	2,048	4,367	906,819	2,098	4,581	879,723
Chemung	1,034	2,283	442,274	857	1,925	346,632	939	2,174	357,131
Chenango	234	470	107,773	228	508	98,614	286	604	109,168
Clinton	661	1,206	292,069	606	1,149	242,702	584	1,188	243,601
Columbia	380	691	178,817	399	749	167,869	413	812	165,131
Cortland	462	943	224,768	375	820	176,548	417	963	204,564
Delaware	168	268	72,996	191	360	81,061	206	389	95,137
Dutchess	1,288	2,335	702,447	1,340	2,542	677,484	1,572	3,055	719,849
Erie	12,771	27,204	5,492,197	14,026	31,143	6,159,039	16,844	37,691	6,565,278
Essex	195	393	90,072	210	428	92,700	250	499	68,188
Franklin	330	642	131,633	283	549	117,801	336	668	127,111
Fulton	368	670	166,442	382	728	154,128	434	895	169,173
Genesee	285	559	123,180	284	587	127,375	292	623	114,698
Greene	420	807	177,634	413	815	174,287	408	801	172,213
Hamilton	14	19	4,172	14	22	5,989	12	17	4,321
Herkimer	335	677	136,757	307	621	130,601	364	777	140,390
Jefferson	1,024	2,116	473,849	1,032	2,120	452,807	1,227	2,537	496,184
Lewis	121	243	43,412	129	245	44,223	145	285	50,445
Livingston	625	1,197	292,685	533	1,016	236,539	469	975	207,632
Madison	151	270	63,321	160	289	69,887	173	314	71,278
Monroe	14,014	30,564	7,469,220	14,561	32,501	9,365,442	16,257	37,577	8,245,629
Montgomery	365	818	148,901	279	575	141,343	305	651	121,691
Nassau	4,177	8,136	2,661,523	4,436	8,908	2,524,131	4,964	10,142	2,672,868
Niagara	2,422	5,093	990,730	2,505	5,173	1,032,628	2,763	5,760	1,084,929
Oneida	2,232	5,201	1,001,337	2,330	5,689	1,006,707	2,627	6,540	1,109,120
Onondaga	6,145	12,930	2,700,981	5,851	12,870	2,659,662	5,875	13,602	2,528,056
Ontario	661	1,209	299,234	586	1,108	298,901	553	1,043	243,733
Orange	2,670	6,056	1,747,593	2,888	7,575	1,641,755	3,084	7,985	1,706,437
Orleans	493	1,027	218,563	489	1,114	218,917	486	1,096	222,115
Oswego	764	1,563	416,823	799	1,738	372,014	849	2,000	404,572
Otsego	141	208	81,521	119	190	55,523	129	202	59,260
Putnam	126	206	78,026	111	189	61,875	121	197	64,578
Rensselaer	1,262	2,742	606,677	1,141	2,521	495,134	1,184	2,654	498,296
Rockland	1,148	2,966	674,549	1,193	3,428	710,824	1,252	3,628	725,566
St. Lawrence	1,052	2,060	465,083	1,031	2,061	390,687	1,213	2,547	463,161
Saratoga	278	419	130,860	247	373	120,837	246	414	112,783
Schenectady	1,108	2,225	529,921	1,035	2,236	482,568	1,032	2,366	424,285
Schoharie	101	177	46,797	102	171	59,787	90	161	37,806
Schuyler	131	272	54,647	115	218	48,610	120	254	48,388
Seneca	172	317	72,741	181	334	72,067	189	389	72,243
Steuben	875	1,685	352,665	767	1,549	325,091	980	2,030	359,921
Suffolk	7,037	14,125	5,596,759	7,148	14,387	5,136,030	7,667	16,151	5,036,722
Sullivan	627	1,291	330,928	583	1,177	309,601	571	1,212	272,301
Tioga	350	700	154,285	275	580	119,420	327	712	131,037
Tompkins	692	1,310	332,672	689	1,310	321,264	685	1,343	337,786
Ulster	1,240	2,431	689,406	1,170	2,323	579,133	1,232	2,497	635,684
Warren	255	466	119,669	280	558	131,418	251	475	103,246
Washington	369	626	186,726	337	613	163,983	341	669	154,251
Wayne	543	993	242,873	473	827	212,697	573	1,185	246,056
Westchester	8,649	17,811	6,777,272	9,375	20,070	7,541,481	11,032	23,862	8,467,510
Wyoming	161	256	58,712	198	358	78,486	180	350	69,505
Yates	112	187	43,410	79	135	27,456	91	186	34,575

\* Expenditures partially estimated.

Table 5  
**TEMPORARY ASSISTANCE**  
Cases, Recipients, Children, Adults and Expenditures by Local District  
May 2002

Local District	Temporary Assistance				
	Cases	Recipients	Children	Adults	Expenditures
New York State	301,353	624,750	366,474	258,276	\$142,176,458
New York City*	210,606	435,709	252,077	183,632	93,165,000
Rest of State	90,747	189,041	114,397	74,644	49,011,458
Albany	3,542	7,385	4,320	3,065	1,935,579
Allegany	480	1,066	649	417	180,232
Broome	2,173	4,573	2,758	1,815	1,012,993
Cattaraugus	621	1,251	767	484	242,296
Cayuga	405	876	566	310	181,963
Chautauqua	2,288	4,827	2,825	2,002	960,793
Chemung	1,034	2,283	1,434	849	442,274
Chenango	234	470	295	175	107,773
Clinton	661	1,206	677	529	292,069
Columbia	380	691	409	282	178,817
Cortland	462	943	513	430	224,768
Delaware	168	268	169	99	72,996
Dutchess	1,288	2,335	1,470	865	702,447
Erie	12,771	27,204	16,439	10,765	5,492,197
Essex	195	393	221	172	90,072
Franklin	330	642	383	259	131,633
Fulton	368	670	385	285	166,442
Genesee	285	559	331	228	123,180
Greene	420	807	437	370	177,634
Hamilton	14	19	8	11	4,172
Herkimer	335	677	423	254	136,757
Jefferson	1,024	2,116	1,177	939	473,849
Lewis	121	243	158	85	43,412
Livingston	625	1,197	591	606	292,685
Madison	151	270	202	68	63,321
Monroe	14,014	30,564	18,718	11,846	7,469,220
Montgomery	365	818	497	321	148,901
Nassau	4,177	8,136	5,149	2,987	2,661,523
Niagara	2,422	5,093	3,042	2,051	990,730
Oneida	2,232	5,201	3,344	1,857	1,001,337
Onondaga	6,145	12,930	7,941	4,989	2,700,981
Ontario	661	1,209	666	543	299,234
Orange	2,670	6,056	3,911	2,145	1,747,593
Orleans	493	1,027	583	444	218,563
Oswego	764	1,563	1,010	553	416,823
Otsego	141	208	118	90	81,521
Putnam	126	206	110	96	78,026
Rensselaer	1,262	2,742	1,679	1,063	606,677
Rockland	1,148	2,966	1,960	1,006	674,549
St. Lawrence	1,052	2,060	1,159	901	465,083
Saratoga	278	419	303	116	130,860
Schenectady	1,108	2,225	1,479	746	529,921
Schoharie	101	177	110	67	46,797
Schuyler	131	272	160	112	54,647
Seneca	172	317	185	132	72,741
Steuben	875	1,685	910	775	352,665
Suffolk	7,037	14,125	8,455	5,670	5,596,759
Sullivan	627	1,291	822	469	330,928
Tioga	350	700	429	271	154,285
Tompkins	692	1,310	711	599	332,672
Ulster	1,240	2,431	1,527	904	689,406
Warren	255	466	264	202	119,669
Washington	369	626	342	284	186,726
Wayne	543	993	585	408	242,873
Westchester	8,649	17,811	10,390	7,421	6,777,272
Wyoming	161	256	134	122	58,712
Yates	112	187	97	90	43,410

\* Expenditures partially estimated.

Table 6  
**FAMILY ASSISTANCE**  
Cases, Recipients, Children, Adults and Expenditures by Local District  
May 2002

Local District	Family Assistance				
	Cases	Recipients	Children	Adults	Expenditures
New York State	149,899	356,423	257,412	99,011	77,671,770
New York City*	97,939	228,720	165,146	63,574	48,445,000
Rest of State	51,960	127,703	92,266	35,437	29,226,770
Albany	2,158	5,395	3,730	1,665	1,159,856
Allegany	327	824	568	256	129,705
Broome	1,344	3,363	2,391	972	643,730
Cattaraugus	402	955	686	269	166,348
Cayuga	296	701	505	196	131,679
Chautauqua	1,447	3,611	2,444	1,167	671,292
Chemung	725	1,835	1,292	543	312,422
Chenango	162	385	281	104	77,939
Clinton	396	891	629	262	183,131
Columbia	250	547	393	154	124,124
Cortland	286	726	476	250	143,044
Delaware	103	197	165	32	40,959
Dutchess	791	1,708	1,300	408	451,773
Erie	6,976	17,490	12,642	4,848	3,153,653
Essex	136	317	208	109	61,994
Franklin	214	480	336	144	85,102
Fulton	244	533	375	158	105,664
Genesee	160	412	302	110	71,989
Greene	268	628	412	216	117,884
Hamilton	5	10	8	2	1,611
Herkimer	244	571	407	164	98,438
Jefferson	578	1,498	1,018	480	278,175
Lewis	83	194	145	49	30,516
Livingston	356	864	528	336	168,938
Madison	115	233	197	36	49,860
Monroe	7,022	18,030	13,229	4,801	3,988,102
Montgomery	235	669	480	189	98,417
Nassau	2,469	5,570	4,291	1,279	1,696,084
Niagara	1,415	3,379	2,353	1,026	573,319
Oneida	1,430	3,898	2,853	1,045	665,310
Onondaga	3,767	9,518	6,862	2,656	1,758,818
Ontario	366	856	603	253	165,628
Orange	1,649	4,201	3,117	1,084	1,023,846
Orleans	292	734	496	238	137,263
Oswego	538	1,256	929	327	266,812
Otsego	69	126	109	17	34,982
Putnam	62	135	100	35	41,162
Rensselaer	897	2,239	1,546	693	426,915
Rockland	563	1,565	1,237	328	344,774
St.Lawrence	654	1,495	991	504	305,122
Saratoga	175	307	284	23	74,461
Schenectady	727	1,673	1,290	383	333,336
Schoharie	64	137	107	30	27,638
Schuyler	89	220	154	66	36,814
Seneca	99	209	145	64	39,875
Steuben	502	1,205	804	401	212,375
Suffolk	3,578	8,964	6,764	2,200	3,352,305
Sullivan	427	1,045	776	269	218,644
Tioga	255	571	398	173	110,311
Tompkins	388	931	639	292	181,582
Ulster	849	1,907	1,391	516	494,744
Warren	152	350	251	99	72,079
Washington	210	440	310	130	104,298
Wayne	314	736	548	188	142,268
Westchester	4,489	10,655	7,545	3,110	3,782,069
Wyoming	91	185	132	53	34,173
Yates	57	129	94	35	23,418

\* Expenditures partially estimated.

Table 7  
SAFETY NET ASSISTANCE  
Cases, Recipients, Children, Adults and Expenditures by Local District  
May 2002

Local District	Safety Net Assistance				
	Cases	Recipients	Children	Adults	Expenditures
New York State	151,454	268,327	109,062	159,265	\$64,504,688
New York City*	112,667	206,989	86,931	120,058	44,720,000
Rest of State	38,787	61,338	22,131	39,207	19,784,688
Albany	1,384	1,990	590	1,400	775,723
Allegany	153	242	81	161	50,527
Broome	829	1,210	367	843	369,263
Cattaraugus	219	296	81	215	75,948
Cayuga	109	175	61	114	50,284
Chautauqua	841	1,216	381	835	289,501
Chemung	309	448	142	306	129,852
Chenango	72	85	14	71	29,834
Clinton	265	315	48	267	108,938
Columbia	130	144	16	128	54,693
Cortland	176	217	37	180	81,724
Delaware	65	71	4	67	32,037
Dutchess	497	627	170	457	250,674
Erie	5,795	9,714	3,797	5,917	2,338,544
Essex	59	76	13	63	28,078
Franklin	116	162	47	115	46,531
Fulton	124	137	10	127	60,778
Genesee	125	147	29	118	51,191
Greene	152	179	25	154	59,750
Hamilton	9	9	0	9	2,561
Herkimer	91	106	16	90	38,319
Jefferson	446	618	159	459	195,674
Lewis	38	49	13	36	12,896
Livingston	269	333	63	270	123,747
Madison	36	37	5	32	13,461
Monroe	6,992	12,534	5,489	7,045	3,481,118
Montgomery	130	149	17	132	50,484
Nassau	1,708	2,566	858	1,708	965,439
Niagara	1,007	1,714	689	1,025	417,411
Oneida	802	1,303	491	812	336,027
Onondaga	2,378	3,412	1,079	2,333	942,163
Ontario	295	353	63	290	133,606
Orange	1,021	1,855	794	1,061	723,747
Orleans	201	293	87	206	81,300
Oswego	226	307	81	226	150,011
Otsego	72	82	9	73	46,539
Putnam	64	71	10	61	36,864
Rensselaer	365	503	133	370	179,762
Rockland	585	1,401	723	678	329,775
St.Lawrence	398	565	168	397	159,961
Saratoga	103	112	19	93	56,399
Schenectady	381	552	189	363	196,585
Schoharie	37	40	3	37	19,159
Schuyler	42	52	6	46	17,833
Seneca	73	108	40	68	32,866
Steuben	373	480	106	374	140,290
Suffolk	3,459	5,161	1,691	3,470	2,244,454
Sullivan	200	246	46	200	112,284
Tioga	95	129	31	98	43,974
Tompkins	304	379	72	307	151,090
Ulster	391	524	136	388	194,662
Warren	103	116	13	103	47,590
Washington	159	186	32	154	82,428
Wayne	229	257	37	220	100,605
Westchester	4,160	7,156	2,845	4,311	2,995,203
Wyoming	70	71	2	69	24,539
Yates	55	58	3	55	19,992

\* Expenditures partially estimated.



Table 8  
 TEMPORARY ASSISTANCE BY FUNDING SOURCE  
 Cases, Recipients and Expenditures by Local District  
 May 2002

Local District	Total			Federally Participating - TANF Family Assistance and Safety Net - FP			Federally Non-Participating Safety Net Assistance - FNP		
	Cases	Recipients	Expenditures	Cases	Recipients	Expenditures	Cases	Recipients	Expenditures
New York State	301,353	624,750	\$142,176,458	151,608	360,876	\$78,776,573	149,745	263,874	\$63,399,885
New York City*	210,606	435,709	93,165,000	98,080	229,035	48,482,000	112,526	206,674	44,683,000
Rest of State	90,747	189,041	49,011,458	53,528	131,841	30,294,573	37,219	57,200	18,716,885
Albany	3,542	7,385	1,935,579	2,188	5,476	1,174,724	1,354	1,909	760,855
Allegany	480	1,066	180,232	327	824	129,705	153	242	50,527
Broome	2,173	4,573	1,012,993	1,375	3,450	661,491	798	1,123	351,502
Cattaraugus	621	1,251	242,296	417	1,001	171,599	204	250	70,697
Cayuga	405	876	181,963	300	711	133,079	105	165	48,884
Chautauqua	2,288	4,827	960,793	1,482	3,704	687,841	806	1,123	272,952
Chemung	1,034	2,283	442,274	732	1,858	317,207	302	425	125,067
Chenango	234	470	107,773	162	385	77,939	72	85	29,834
Clinton	661	1,206	292,069	407	915	188,175	254	291	103,894
Columbia	380	691	178,817	251	550	124,615	129	141	54,202
Cortland	462	943	224,768	294	745	147,495	168	198	77,273
Delaware	168	268	72,996	104	198	41,909	64	70	31,087
Dutchess	1,288	2,335	702,447	821	1,769	478,064	467	566	224,383
Erie	12,771	27,204	5,492,197	7,295	18,328	3,303,774	5,476	8,876	2,188,423
Essex	195	393	90,072	139	326	63,454	56	67	26,618
Franklin	330	642	131,633	216	484	86,359	114	158	45,274
Fulton	368	670	166,442	246	542	106,437	122	128	60,005
Genesee	285	559	123,180	170	430	77,246	115	129	45,934
Greene	420	807	177,634	268	628	117,884	152	179	59,750
Hamilton	14	19	4,172	5	10	1,611	9	9	2,561
Herkimer	335	677	136,757	245	573	98,746	90	104	38,011
Jefferson	1,024	2,116	473,849	599	1,550	285,706	425	566	188,143
Lewis	121	243	43,412	84	198	31,042	37	45	12,370
Livingston	625	1,197	292,685	380	921	178,881	245	276	113,804
Madison	151	270	63,321	115	233	49,860	36	37	13,461
Monroe	14,014	30,564	7,469,220	7,534	19,396	4,319,892	6,480	11,168	3,149,328
Montgomery	365	818	148,901	235	669	98,417	130	149	50,484
Nassau	4,177	8,136	2,661,523	2,499	5,644	1,711,936	1,678	2,492	949,587
Niagara	2,422	5,093	990,730	1,466	3,525	597,864	956	1,568	392,866
Oneida	2,232	5,201	1,001,337	1,459	3,986	687,585	773	1,215	313,752
Onondaga	6,145	12,930	2,700,981	3,791	9,578	1,770,432	2,354	3,352	930,549
Ontario	661	1,209	299,234	373	873	168,997	288	336	130,237
Orange	2,670	6,056	1,747,593	1,672	4,263	1,043,797	998	1,793	703,796
Orleans	493	1,027	218,563	296	746	140,082	197	281	78,481
Oswego	764	1,563	416,823	551	1,294	273,137	213	269	143,686
Otsego	141	208	81,521	73	132	35,843	68	76	45,678
Putnam	126	206	78,026	64	139	41,627	62	67	36,399
Rensselaer	1,262	2,742	606,677	920	2,313	439,818	342	429	166,859
Rockland	1,148	2,966	674,549	575	1,600	352,027	573	1,366	322,522
St. Lawrence	1,052	2,060	465,083	657	1,503	305,734	395	557	159,349
Saratoga	278	419	130,860	176	311	75,134	102	108	55,726
Schenectady	1,108	2,225	529,921	746	1,721	340,214	362	504	189,707
Schoharie	101	177	46,797	64	137	27,638	37	40	19,159
Schuyler	131	272	54,647	89	220	36,814	42	52	17,833
Seneca	172	317	72,741	101	217	40,833	71	100	31,908
Steuben	875	1,685	352,665	506	1,212	213,656	369	473	139,009
Suffolk	7,037	14,125	5,596,759	3,662	9,193	3,479,655	3,375	4,932	2,117,104
Sullivan	627	1,291	330,928	430	1,057	220,689	197	234	110,239
Tioga	350	700	154,285	258	577	112,421	92	123	41,864
Tompkins	692	1,310	332,672	402	959	187,069	290	351	145,603
Ulster	1,240	2,431	689,406	892	2,009	523,057	348	422	166,349
Warren	255	466	119,669	154	356	73,228	101	110	46,441
Washington	369	626	186,726	215	452	106,292	154	174	80,434
Wayne	543	993	242,873	319	752	145,540	224	241	97,333
Westchester	8,649	17,811	6,777,272	4,578	10,883	3,932,636	4,071	6,928	2,844,636
Wyoming	161	256	58,712	92	186	34,248	69	70	24,464
Yates	112	187	43,410	57	129	23,418	55	58	19,992

\* Expenditures partially estimated.

Table 9  
 TEMPORARY ASSISTANCE TO NEEDY FAMILIES (TANF) - FP BY PROGRAM  
 Cases, Recipients, Children, Adults and Expenditures by Local District  
 May 2002

Local District	Family Assistance					Safety Net Assistance - FP				
	Cases	Recipients	Children	Adults	Expenditures	Cases	Recipients	Children	Adults	Expenditures
New York State	149,899	356,423	257,412	99,011	\$77,671,770	1,709	4,453	2,652	1,801	\$1,104,803
New York City*	97,939	228,720	165,146	63,574	48,445,000	141	315	165	150	37,000
Rest of State	51,960	127,703	92,266	35,437	29,226,770	1,568	4,138	2,487	1,651	1,067,803
Albany	2,158	5,395	3,730	1,665	1,159,856	30	81	46	35	14,868
Allegany	327	824	568	256	129,705	0	0	0	0	0
Broome	1,344	3,363	2,391	972	643,730	31	87	48	39	17,761
Cattaraugus	402	955	686	269	166,348	15	46	31	15	5,251
Cayuga	296	701	505	196	131,679	4	10	5	5	1,400
Chautauqua	1,447	3,611	2,444	1,167	671,292	35	93	62	31	16,549
Chemung	725	1,835	1,292	543	312,422	7	23	17	6	4,785
Chenango	162	385	281	104	77,939	0	0	0	0	0
Clinton	396	891	629	262	183,131	11	24	12	12	5,044
Columbia	250	547	393	154	124,124	1	3	2	1	491
Cortland	286	726	476	250	143,044	8	19	9	10	4,451
Delaware	103	197	165	32	40,959	1	1	0	1	950
Dutchess	791	1,708	1,300	408	451,773	30	61	34	27	26,291
Erie	6,976	17,490	12,642	4,848	3,153,653	319	838	487	351	150,121
Essex	136	317	208	109	61,994	3	9	5	4	1,460
Franklin	214	480	336	144	85,102	2	4	2	2	1,257
Fulton	244	533	375	158	105,664	2	9	6	3	773
Genesee	160	412	302	110	71,989	10	18	9	9	5,257
Greene	268	628	412	216	117,884	0	0	0	0	0
Hamilton	5	10	8	2	1,611	0	0	0	0	0
Herkimer	244	571	407	164	98,438	1	2	1	1	308
Jefferson	578	1,498	1,018	480	278,175	21	52	29	23	7,531
Lewis	83	194	145	49	30,516	1	4	3	1	526
Livingston	356	864	528	336	168,938	24	57	31	26	9,943
Madison	115	233	197	36	49,860	0	0	0	0	0
Monroe	7,022	18,030	13,229	4,801	3,988,102	512	1,366	858	508	331,790
Montgomery	235	669	480	189	98,417	0	0	0	0	0
Nassau	2,469	5,570	4,291	1,279	1,696,084	30	74	45	29	15,852
Niagara	1,415	3,379	2,353	1,026	573,319	51	146	87	59	24,545
Oneida	1,430	3,898	2,853	1,045	665,310	29	88	56	32	22,275
Onondaga	3,767	9,518	6,862	2,656	1,758,818	24	60	35	25	11,614
Ontario	366	856	603	253	165,628	7	17	8	9	3,369
Orange	1,649	4,201	3,117	1,084	1,023,846	23	62	37	25	19,951
Orleans	292	734	496	238	137,263	4	12	6	6	2,819
Oswego	538	1,256	929	327	266,812	13	38	22	16	6,325
Otsego	69	126	109	17	34,982	4	6	3	3	861
Putnam	62	135	100	35	41,162	2	4	2	2	465
Rensselaer	897	2,239	1,546	693	426,915	23	74	52	22	12,903
Rockland	563	1,565	1,237	328	344,774	12	35	24	11	7,253
St.Lawrence	654	1,495	991	504	305,122	3	8	5	3	612
Saratoga	175	307	284	23	74,461	1	4	3	1	673
Schenectady	727	1,673	1,290	383	333,336	19	48	28	20	6,878
Schoharie	64	137	107	30	27,638	0	0	0	0	0
Schuyler	89	220	154	66	36,814	0	0	0	0	0
Seneca	99	209	145	64	39,875	2	8	5	3	958
Steuben	502	1,205	804	401	212,375	4	7	4	3	1,281
Suffolk	3,578	8,964	6,764	2,200	3,352,305	84	229	137	92	127,350
Sullivan	427	1,045	776	269	218,644	3	12	7	5	2,045
Tioga	255	571	398	173	110,311	3	6	2	4	2,110
Tompkins	388	931	639	292	181,582	14	28	16	12	5,487
Ulster	849	1,907	1,391	516	494,744	43	102	54	48	28,313
Warren	152	350	251	99	72,079	2	6	4	2	1,149
Washington	210	440	310	130	104,298	5	12	7	5	1,994
Wayne	314	736	548	188	142,268	5	16	10	6	3,272
Westchester	4,489	10,655	7,545	3,110	3,782,069	89	228	131	97	150,567
Wyoming	91	185	132	53	34,173	1	1	0	1	75
Yates	57	129	94	35	23,418	0	0	0	0	0

\* Expenditures partially estimated.

Table 10  
SAFETY NET ASSISTANCE - FNP  
Cases, Recipients, Children, Adults and Expenditures by Local District  
May 2002

Local District	Safety Net Assistance - FNP				
	Cases	Recipients	Children	Adults	Expenditures
New York State	149,745	263,874	106,410	157,464	\$63,399,885
New York City*	112,526	206,674	86,766	119,908	44,683,000
Rest of State	37,219	57,200	19,644	37,556	18,716,885
Albany	1,354	1,909	544	1,365	760,855
Allegany	153	242	81	161	50,527
Broome	798	1,123	319	804	351,502
Cattaraugus	204	250	50	200	70,697
Cayuga	105	165	56	109	48,884
Chautauqua	806	1,123	319	804	272,952
Chemung	302	425	125	300	125,067
Chenango	72	85	14	71	29,834
Clinton	254	291	36	255	103,894
Columbia	129	141	14	127	54,202
Cortland	168	198	28	170	77,273
Delaware	64	70	4	66	31,087
Dutchess	467	566	136	430	224,383
Erie	5,476	8,876	3,310	5,566	2,188,423
Essex	56	67	8	59	26,618
Franklin	114	158	45	113	45,274
Fulton	122	128	4	124	60,005
Genesee	115	129	20	109	45,934
Greene	152	179	25	154	59,750
Hamilton	9	9	0	9	2,561
Herkimer	90	104	15	89	38,011
Jefferson	425	566	130	436	188,143
Lewis	37	45	10	35	12,370
Livingston	245	276	32	244	113,804
Madison	36	37	5	32	13,461
Monroe	6,480	11,168	4,631	6,537	3,149,328
Montgomery	130	149	17	132	50,484
Nassau	1,678	2,492	813	1,679	949,587
Niagara	956	1,568	602	966	392,866
Oneida	773	1,215	435	780	313,752
Onondaga	2,354	3,352	1,044	2,308	930,549
Ontario	288	336	55	281	130,237
Orange	998	1,793	757	1,036	703,796
Orleans	197	281	81	200	78,481
Oswego	213	269	59	210	143,686
Otsego	68	76	6	70	45,678
Putnam	62	67	8	59	36,399
Rensselaer	342	429	81	348	166,859
Rockland	573	1,366	699	667	322,522
St.Lawrence	395	557	163	394	159,349
Saratoga	102	108	16	92	55,726
Schenectady	362	504	161	343	189,707
Schoharie	37	40	3	37	19,159
Schuyler	42	52	6	46	17,833
Seneca	71	100	35	65	31,908
Steuben	369	473	102	371	139,009
Suffolk	3,375	4,932	1,554	3,378	2,117,104
Sullivan	197	234	39	195	110,239
Tioga	92	123	29	94	41,864
Tompkins	290	351	56	295	145,603
Ulster	348	422	82	340	166,349
Warren	101	110	9	101	46,441
Washington	154	174	25	149	80,434
Wayne	224	241	27	214	97,333
Westchester	4,071	6,928	2,714	4,214	2,844,636
Wyoming	69	70	2	68	24,464
Yates	55	58	3	55	19,992

\* Expenditures partially estimated.

Table 11  
**SAFETY NET ASSISTANCE - FNP BY CASE CATEGORY**  
(Maintenance of Effort (MOE) vs. Non-Maintenance of Effort (Non-MOE))  
Cases, Recipients, Children, Adults and Expenditures by Local District  
May 2002

Local District	Maintenance of Effort (MOE)					Non-Maintenance of Effort (Non-MOE)				
	Cases	Recipients	Children	Adults	Expenditures	Cases	Recipients	Children	Adults	Expenditures
New York State	42,690	143,993	96,468	47,525	\$22,243,633	107,055	119,881	9,942	109,939	\$41,156,252
New York City*	36,938	121,668	80,482	41,186	18,583,000	75,588	85,006	6,284	78,722	26,100,000
Rest of State	5,752	22,325	15,986	6,339	3,660,633	31,467	34,875	3,658	31,217	15,056,252
Albany	161	645	471	174	97,979	1,193	1,264	73	1,191	662,876
Allegany	25	95	66	29	9,886	128	147	15	132	40,641
Broome	85	343	247	96	44,535	713	780	72	708	306,967
Cattaraugus	14	44	25	19	4,121	190	206	25	181	66,576
Cayuga	14	63	45	18	6,170	91	102	11	91	42,714
Chautauqua	92	324	241	83	43,634	714	799	78	721	229,318
Chemung	29	133	97	36	15,366	273	292	28	264	109,701
Chenango	5	16	11	5	1,873	67	69	3	66	27,961
Clinton	9	30	19	11	3,147	245	261	17	244	100,747
Columbia	6	14	8	6	1,821	123	127	6	121	52,381
Cortland	9	33	23	10	3,382	159	165	5	160	73,891
Delaware	0	0	0	0	0	64	70	4	66	31,087
Dutchess	25	87	62	25	14,820	442	479	74	405	209,563
Erie	1,044	3,971	2,834	1,137	455,099	4,432	4,905	476	4,429	1,733,324
Essex	2	9	7	2	1,492	54	58	1	57	25,126
Franklin	19	56	37	19	5,769	95	102	8	94	39,505
Fulton	1	1	0	1	296	121	127	4	123	59,709
Genesee	3	10	7	3	1,592	112	119	13	106	44,342
Greene	1	7	6	1	523	151	172	19	153	59,227
Hamilton	0	0	0	0	0	9	9	0	9	2,561
Herkimer	1	6	5	1	652	89	98	10	88	37,359
Jefferson	48	158	106	52	22,982	377	408	24	384	165,161
Lewis	4	11	7	4	1,104	33	34	3	31	11,266
Livingston	12	34	21	13	3,832	233	242	11	231	109,972
Madison	0	0	0	0	0	36	37	5	32	13,461
Monroe	1,475	5,675	4,120	1,555	876,892	5,005	5,493	511	4,982	2,272,436
Montgomery	5	17	12	5	1,286	125	132	5	127	49,198
Nassau	255	905	632	273	177,796	1,423	1,587	181	1,406	771,791
Niagara	187	733	522	211	80,242	769	835	80	755	312,624
Oneida	105	451	340	111	51,203	668	764	95	669	262,549
Onondaga	251	1,019	754	265	131,605	2,103	2,333	290	2,043	798,944
Ontario	15	50	35	15	6,912	273	286	20	266	123,325
Orange	171	855	637	218	108,322	827	938	120	818	595,474
Orleans	5	17	12	5	2,928	192	264	69	195	75,553
Oswego	8	38	30	8	3,872	205	231	29	202	139,814
Otsego	1	7	5	2	525	67	69	1	68	45,153
Putnam	0	0	0	0	0	62	67	8	59	36,399
Rensselaer	18	57	40	17	8,969	324	372	41	331	157,890
Rockland	107	673	495	178	60,850	466	693	204	489	261,672
St.Lawrence	48	180	131	49	21,533	347	377	32	345	137,816
Saratoga	1	4	3	1	416	101	104	13	91	55,310
Schenectady	21	97	73	24	8,406	341	407	88	319	181,301
Schoharie	0	0	0	0	0	37	40	3	37	19,159
Schuyler	0	0	0	0	0	42	52	6	46	17,833
Seneca	7	29	23	6	2,329	64	71	12	59	29,579
Steuben	35	122	85	37	14,482	334	351	17	334	124,527
Suffolk	447	1,757	1,251	506	498,780	2,928	3,175	303	2,872	1,618,324
Sullivan	9	33	23	10	7,240	188	201	16	185	102,999
Tioga	10	34	23	11	4,532	82	89	6	83	37,332
Tompkins	17	57	39	18	5,934	273	294	17	277	139,669
Ulster	20	81	60	21	9,690	328	341	22	319	156,659
Warren	1	2	1	1	697	100	108	8	100	45,744
Washington	3	11	7	4	1,744	151	163	18	145	78,690
Wayne	3	11	8	3	1,118	221	230	19	211	96,215
Westchester	918	3,320	2,280	1,040	832,255	3,153	3,608	434	3,174	2,012,381
Wyoming	0	0	0	0	0	69	70	2	68	24,464
Yates	0	0	0	0	0	55	58	3	55	19,992

\* Expenditures partially estimated.

Table 12  
**SAFETY NET ASSISTANCE - FNP - CASH TOTAL**  
Cases, Recipients, Children, Adults and Expenditures by Local District  
May 2002

Local District	Safety Net Assistance - FNP - Cash Total				
	Cases	Recipients	Children	Adults	Expenditures
New York State	See Note	See Note	See Note	See Note	See Note
New York City	See Note	See Note	See Note	See Note	See Note
Rest of State	21,144	23,862	2,851	21,011	\$9,370,837
Albany	891	1,031	141	890	462,595
Allegany	105	123	15	108	29,635
Broome	480	525	54	471	185,135
Cattaraugus	149	164	21	143	49,293
Cayuga	72	85	12	73	29,162
Chautauqua	526	568	33	535	161,945
Chemung	229	240	15	225	86,819
Chenango	54	58	4	54	19,397
Clinton	212	225	12	213	80,146
Columbia	101	102	2	100	35,952
Cortland	115	130	11	119	50,533
Delaware	54	59	3	56	21,922
Dutchess	249	283	55	228	113,288
Erie	2,309	2,645	346	2,299	898,250
Essex	47	51	1	50	19,603
Franklin	79	82	3	79	31,973
Fulton	91	95	3	92	37,285
Genesee	81	88	12	76	26,302
Greene	119	125	1	124	41,372
Hamilton	9	9	0	9	2,561
Herkimer	67	71	4	67	21,500
Jefferson	264	296	26	270	107,290
Lewis	25	27	3	24	5,324
Livingston	179	187	10	177	79,324
Madison	34	35	5	30	10,938
Monroe	2,832	3,325	521	2,804	1,257,754
Montgomery	95	103	6	97	36,493
Nassau	1,102	1,154	48	1,106	534,004
Niagara	454	497	57	440	157,826
Oneida	504	609	103	506	178,224
Onondaga	1,787	2,039	285	1,754	663,166
Ontario	209	215	13	202	77,138
Orange	566	640	55	585	342,008
Orleans	154	174	19	155	58,380
Oswego	151	157	9	148	89,880
Otsego	49	51	1	50	29,985
Putnam	38	42	4	38	14,858
Rensselaer	217	242	20	222	92,480
Rockland	223	262	35	227	117,212
St.Lawrence	279	302	26	276	100,031
Saratoga	87	93	15	78	43,388
Schenectady	218	250	52	198	97,996
Schoharie	30	33	3	30	13,390
Schuyler	32	41	5	36	10,967
Seneca	40	42	5	37	12,631
Steuben	268	284	18	266	87,532
Suffolk	2,217	2,504	310	2,194	1,011,460
Sullivan	140	153	16	137	55,487
Tioga	77	80	1	79	31,739
Tompkins	164	188	20	168	82,915
Ulster	184	190	11	179	81,003
Warren	79	83	3	80	31,596
Washington	130	145	17	128	65,418
Wayne	164	172	18	154	65,039
Westchester	2,001	2,372	358	2,014	1,282,946
Wyoming	61	62	2	60	21,223
Yates	51	54	3	51	19,124

Note: A breakout of Safety Net Assistance - FNP - Cash and Safety Net Assistance - FNP - Non-Cash data is not available for New York City.

Table 13  
**SAFETY NET ASSISTANCE - FNP - CASH BY CASE CATEGORY**  
(Maintenance of Effort (MOE) vs. Non-Maintenance of Effort (Non-MOE))  
Cases, Recipients, Children, Adults and Expenditures by Local District  
May 2002

Local District	Maintenance of Effort (MOE)					Non-Maintenance of Effort (Non-MOE)				
	Cases	Recipients	Children	Adults	Expenditures	Cases	Recipients	Children	Adults	Expenditures
New York State	See Note	See Note	See Note	See Note	See Note	See Note	See Note	See Note	See Note	See Note
New York City	See Note	See Note	See Note	See Note	See Note	See Note	See Note	See Note	See Note	See Note
Rest of State	691	2,112	1,326	786	\$406,545	20,453	21,750	1,525	20,225	\$8,964,292
Albany	37	143	102	41	21,720	854	888	39	849	440,875
Allegany	3	12	9	3	1,086	102	111	6	105	28,549
Broome	10	23	12	11	3,643	470	502	42	460	181,492
Cattaraugus	3	12	8	4	1,475	146	152	13	139	47,818
Cayuga	2	10	7	3	743	70	75	5	70	28,419
Chautauqua	3	7	3	4	707	523	561	30	531	161,238
Chemung	2	6	4	2	732	227	234	11	223	86,087
Chenango	1	4	3	1	241	53	54	1	53	19,156
Clinton	2	7	4	3	412	210	218	8	210	79,734
Columbia	3	3	0	3	529	98	99	2	97	35,423
Cortland	3	12	8	4	1,655	112	118	3	115	48,878
Delaware	0	0	0	0	0	54	59	3	56	21,922
Dutchess	7	21	14	7	4,652	242	262	41	221	108,636
Erie	84	259	163	96	37,809	2,225	2,386	183	2,203	860,441
Essex	0	0	0	0	0	47	51	1	50	19,603
Franklin	1	2	1	1	108	78	80	2	78	31,865
Fulton	1	1	0	1	296	90	94	3	91	36,989
Genesee	0	0	0	0	0	81	88	12	76	26,302
Greene	0	0	0	0	0	119	125	1	124	41,372
Hamilton	0	0	0	0	0	9	9	0	9	2,561
Herkimer	0	0	0	0	0	67	71	4	67	21,500
Jefferson	7	23	16	7	4,948	257	273	10	263	102,342
Lewis	1	2	1	1	92	24	25	2	23	5,232
Livingston	2	4	2	2	659	177	183	8	175	78,665
Madison	0	0	0	0	0	34	35	5	30	10,938
Monroe	157	477	302	175	83,131	2,675	2,848	219	2,629	1,174,623
Montgomery	2	6	4	2	316	93	97	2	95	36,177
Nassau	18	28	7	21	7,951	1,084	1,126	41	1,085	526,053
Niagara	13	43	26	17	3,512	441	454	31	423	154,314
Oneida	17	59	42	17	7,017	487	550	61	489	171,207
Onondaga	41	152	105	47	21,064	1,746	1,887	180	1,707	642,102
Ontario	1	1	0	1	344	208	214	13	201	76,794
Orange	23	69	42	27	13,433	543	571	13	558	328,575
Orleans	3	10	7	3	1,930	151	164	12	152	56,450
Oswego	2	5	3	2	658	149	152	6	146	89,222
Otsego	0	0	0	0	0	49	51	1	50	29,985
Putnam	0	0	0	0	0	38	42	4	38	14,858
Rensselaer	1	1	0	1	137	216	241	20	221	92,343
Rockland	10	30	19	11	4,341	213	232	16	216	112,871
St.Lawrence	4	11	8	3	1,303	275	291	18	273	98,728
Saratoga	1	4	3	1	416	86	89	12	77	42,972
Schenectady	3	11	7	4	1,401	215	239	45	194	96,595
Schoharie	0	0	0	0	0	30	33	3	30	13,390
Schuyler	0	0	0	0	0	32	41	5	36	10,967
Seneca	0	0	0	0	0	40	42	5	37	12,631
Steuben	6	12	6	6	1,728	262	272	12	260	85,804
Suffolk	61	188	111	77	64,051	2,156	2,316	199	2,117	947,409
Sullivan	2	7	4	3	562	138	146	12	134	54,925
Tioga	2	2	0	2	479	75	78	1	77	31,260
Tompkins	4	11	6	5	598	160	177	14	163	82,317
Ulster	1	3	1	2	335	183	187	10	177	80,668
Warren	0	0	0	0	0	79	83	3	80	31,596
Washington	1	6	4	2	676	129	139	13	126	64,742
Wayne	1	1	0	1	337	163	171	18	153	64,702
Westchester	145	424	262	162	109,318	1,856	1,948	96	1,852	1,173,628
Wyoming	0	0	0	0	0	61	62	2	60	21,223
Yates	0	0	0	0	0	51	54	3	51	19,124

Note: Data from New York City does not allow the separation of Safety Net - FNP - Cash and Safety Net - FNP - Non-Cash data.

Table 14  
**SAFETY NET ASSISTANCE - FNP - NON-CASH TOTAL**  
Cases, Recipients, Children, Adults and Expenditures by Local District  
May 2002

Local District	Safety Net Assistance - FNP - Non-Cash Total				
	Cases	Recipients	Children	Adults	Expenditures
New York State	See Note	See Note	See Note	See Note	See Note
New York City	See Note	See Note	See Note	See Note	See Note
Rest of State	16,075	33,338	16,793	16,545	\$9,346,048
Albany	463	878	403	475	298,260
Allegany	48	119	66	53	20,892
Broome	318	598	265	333	166,367
Cattaraugus	55	86	29	57	21,404
Cayuga	33	80	44	36	19,722
Chautauqua	280	555	286	269	111,007
Chemung	73	185	110	75	38,248
Chenango	18	27	10	17	10,437
Clinton	42	66	24	42	23,748
Columbia	28	39	12	27	18,250
Cortland	53	68	17	51	26,740
Delaware	10	11	1	10	9,165
Dutchess	218	283	81	202	111,095
Erie	3,167	6,231	2,964	3,267	1,290,173
Essex	9	16	7	9	7,015
Franklin	35	76	42	34	13,301
Fulton	31	33	1	32	22,720
Genesee	34	41	8	33	19,632
Greene	33	54	24	30	18,378
Hamilton	0	0	0	0	0
Herkimer	23	33	11	22	16,511
Jefferson	161	270	104	166	80,853
Lewis	12	18	7	11	7,046
Livingston	66	89	22	67	34,480
Madison	2	2	0	2	2,523
Monroe	3,648	7,843	4,110	3,733	1,891,574
Montgomery	35	46	11	35	13,991
Nassau	576	1,338	765	573	415,583
Niagara	502	1,071	545	526	235,040
Oneida	269	606	332	274	135,528
Onondaga	567	1,313	759	554	267,383
Ontario	79	121	42	79	53,099
Orange	432	1,153	702	451	361,788
Orleans	43	107	62	45	20,101
Oswego	62	112	50	62	53,806
Otsego	19	25	5	20	15,693
Putnam	24	25	4	21	21,541
Rensselaer	125	187	61	126	74,379
Rockland	350	1,104	664	440	205,310
St.Lawrence	116	255	137	118	59,318
Saratoga	15	15	1	14	12,338
Schenectady	144	254	109	145	91,711
Schoharie	7	7	0	7	5,769
Schuyler	10	11	1	10	6,866
Seneca	31	58	30	28	19,277
Steuben	101	189	84	105	51,477
Suffolk	1,158	2,428	1,244	1,184	1,105,644
Sullivan	57	81	23	58	54,752
Tioga	15	43	28	15	10,125
Tompkins	126	163	36	127	62,688
Ulster	164	232	71	161	85,346
Warren	22	27	6	21	14,845
Washington	24	29	8	21	15,016
Wayne	60	69	9	60	32,294
Westchester	2,070	4,556	2,356	2,200	1,561,690
Wyoming	8	8	0	8	3,241
Yates	4	4	0	4	868

Note: A breakout of Safety Net Assistance - FNP - Cash and Safety Net Assistance - FNP - Non-Cash data is not available for New York City.

Table 15  
SAFETY NET ASSISTANCE - FNP - NON-CASH BY CASE CATEGORY  
(Maintenance of Effort (MOE) vs. Non-Maintenance of Effort (Non-MOE))  
Cases, Recipients, Children, Adults and Expenditures by Local District  
May 2002

Local District	Maintenance of Effort (MOE)					Non-Maintenance of Effort (Non-MOE)				
	Cases	Recipients	Children	Adults	Expenditures	Cases	Recipients	Children	Adults	Expenditures
New York State	See Note	See Note	See Note	See Note	See Note	See Note	See Note	See Note	See Note	See Note
New York City	See Note	See Note	See Note	See Note	See Note	See Note	See Note	See Note	See Note	See Note
Rest of State	5,061	20,213	14,660	5,553	\$3,254,088	11,014	13,125	2,133	10,992	\$6,091,960
Albany	124	502	369	133	76,259	339	376	34	342	222,001
Allegany	22	83	57	26	8,800	26	36	9	27	12,092
Broome	75	320	235	85	40,892	243	278	30	248	125,475
Cattaraugus	11	32	17	15	2,646	44	54	12	42	18,758
Cayuga	12	53	38	15	5,427	21	27	6	21	14,295
Chautauqua	89	317	238	79	42,927	191	238	48	190	68,080
Chemung	27	127	93	34	14,634	46	58	17	41	23,614
Chenango	4	12	8	4	1,632	14	15	2	13	8,805
Clinton	7	23	15	8	2,735	35	43	9	34	21,013
Columbia	3	11	8	3	1,292	25	28	4	24	16,958
Cortland	6	21	15	6	1,727	47	47	2	45	25,013
Delaware	0	0	0	0	0	10	11	1	10	9,165
Dutchess	18	66	48	18	10,168	200	217	33	184	100,927
Erie	960	3,712	2,671	1,041	417,290	2,207	2,519	293	2,226	872,883
Essex	2	9	7	2	1,492	7	7	0	7	5,523
Franklin	18	54	36	18	5,661	17	22	6	16	7,640
Fulton	0	0	0	0	0	31	33	1	32	22,720
Genesee	3	10	7	3	1,592	31	31	1	30	18,040
Greene	1	7	6	1	523	32	47	18	29	17,855
Hamilton	0	0	0	0	0	0	0	0	0	0
Herkimer	1	6	5	1	652	22	27	6	21	15,859
Jefferson	41	135	90	45	18,034	120	135	14	121	62,819
Lewis	3	9	6	3	1,012	9	9	1	8	6,034
Livingston	10	30	19	11	3,173	56	59	3	56	31,307
Madison	0	0	0	0	0	2	2	0	2	2,523
Monroe	1,318	5,198	3,818	1,380	793,761	2,330	2,645	292	2,353	1,097,813
Montgomery	3	11	8	3	970	32	35	3	32	13,021
Nassau	237	877	625	252	169,845	339	461	140	321	245,738
Niagara	174	690	496	194	76,730	328	381	49	332	158,310
Oneida	88	392	298	94	44,186	181	214	34	180	91,342
Onondaga	210	867	649	218	110,541	357	446	110	336	156,842
Ontario	14	49	35	14	6,568	65	72	7	65	46,531
Orange	148	786	595	191	94,889	284	367	107	260	266,899
Orleans	2	7	5	2	998	41	100	57	43	19,103
Oswego	6	33	27	6	3,214	56	79	23	56	50,592
Otsego	1	7	5	2	525	18	18	0	18	15,168
Putnam	0	0	0	0	0	24	25	4	21	21,541
Rensselaer	17	56	40	16	8,832	108	131	21	110	65,547
Rockland	97	643	476	167	56,509	253	461	188	273	148,801
St.Lawrence	44	169	123	46	20,230	72	86	14	72	39,088
Saratoga	0	0	0	0	0	15	15	1	14	12,338
Schenectady	18	86	66	20	7,005	126	168	43	125	84,706
Schoharie	0	0	0	0	0	7	7	0	7	5,769
Schuyler	0	0	0	0	0	10	11	1	10	6,866
Seneca	7	29	23	6	2,329	24	29	7	22	16,948
Steuben	29	110	79	31	12,754	72	79	5	74	38,723
Suffolk	386	1,569	1,140	429	434,729	772	859	104	755	670,915
Sullivan	7	26	19	7	6,678	50	55	4	51	48,074
Tioga	8	32	23	9	4,053	7	11	5	6	6,072
Tompkins	13	46	33	13	5,336	113	117	3	114	57,352
Ulster	19	78	59	19	9,355	145	154	12	142	75,991
Warren	1	2	1	1	697	21	25	5	20	14,148
Washington	2	5	3	2	1,068	22	24	5	19	13,948
Wayne	2	10	8	2	781	58	59	1	58	31,513
Westchester	773	2,896	2,018	878	722,937	1,297	1,660	338	1,322	838,753
Wyoming	0	0	0	0	0	8	8	0	8	3,241
Yates	0	0	0	0	0	4	4	0	4	868

Note: Data from New York City does not allow the separation of Safety Net - FNP - Cash and Safety Net - FNP - Non-Cash data.



Table 16  
**FOOD STAMPS**  
Households, Persons and Value of Food Stamps Benefits by Local District  
May 2002

Local District	Total			Temporary Assistance			Non-Temporary Assistance		
	Households	Persons	Food Stamps Benefits	Households	Persons	Food Stamps Benefits	Households	Persons	Food Stamps Benefits
New York State	685,056	1,351,125	\$123,879,191	474,495	840,281	\$84,207,138	210,561	510,844	\$39,672,053
New York City	429,908	821,179	81,543,734	350,444	640,112	66,471,251	79,464	181,067	15,072,483
Rest of State	255,148	529,946	42,335,457	124,051	200,169	17,735,887	131,097	329,777	24,599,570
Albany	8,659	17,500	1,448,692	4,878	8,183	763,500	3,781	9,317	685,192
Allegany	1,803	3,678	271,583	851	1,349	110,488	952	2,329	161,095
Broome	6,242	12,442	992,460	3,088	4,903	444,623	3,154	7,539	547,837
Cattaraugus	2,999	6,010	423,991	1,177	1,637	134,292	1,822	4,373	289,699
Cayuga	2,161	4,775	367,241	731	1,008	83,095	1,430	3,767	284,146
Chautauqua	5,610	11,899	970,232	2,835	4,761	449,796	2,775	7,138	520,436
Chemung	2,871	6,166	477,284	1,464	2,377	214,047	1,407	3,789	263,237
Chenango	1,729	3,820	281,257	475	659	54,969	1,254	3,161	226,288
Clinton	3,046	5,798	438,183	1,373	1,735	144,210	1,673	4,063	293,973
Columbia	1,396	2,534	192,465	598	847	73,135	798	1,687	119,330
Cortland	1,667	3,452	272,610	700	1,034	90,119	967	2,418	182,491
Delaware	1,282	2,425	166,854	461	537	39,605	821	1,888	127,249
Dutchess	3,492	6,306	492,799	1,595	2,237	206,013	1,897	4,069	286,786
Erie	36,517	74,607	6,096,987	18,361	29,926	2,771,622	18,156	44,681	3,325,365
Essex	1,171	2,211	157,374	490	653	47,561	681	1,558	109,813
Franklin	1,674	3,487	257,626	657	900	71,715	1,017	2,587	185,911
Fulton	1,965	4,289	328,513	734	971	83,011	1,231	3,318	245,502
Genesee	1,312	2,678	197,264	488	662	57,503	824	2,016	139,761
Greene	1,342	2,567	205,597	607	885	83,128	735	1,682	122,469
Hamilton	164	242	12,293	28	35	2,718	136	207	9,575
Herkimer	2,021	4,309	334,302	713	1,003	81,224	1,308	3,306	253,078
Jefferson	3,731	8,206	626,249	1,566	2,405	197,642	2,165	5,801	428,607
Lewis	846	1,877	129,601	276	382	27,404	570	1,495	102,197
Livingston	1,704	3,329	263,196	756	1,177	110,767	948	2,152	152,429
Madison	1,587	3,267	251,844	548	623	47,017	1,039	2,644	204,827
Monroe	27,917	60,256	4,866,110	15,036	27,887	2,448,400	12,881	32,369	2,417,710
Montgomery	1,936	4,339	348,092	665	931	83,475	1,271	3,408	264,617
Nassau	9,902	17,216	1,420,016	5,977	8,918	794,460	3,925	8,298	625,556
Niagara	6,434	13,223	1,044,603	3,216	5,295	471,363	3,218	7,928	573,240
Oneida	9,474	20,266	1,576,053	3,890	6,013	515,193	5,584	14,253	1,060,860
Onondaga	13,952	31,297	2,600,870	6,689	11,793	1,096,459	7,263	19,504	1,504,411
Ontario	2,354	4,467	333,916	1,012	1,461	128,629	1,342	3,006	205,287
Orange	7,355	18,653	1,604,036	2,997	5,508	519,242	4,358	13,145	1,084,794
Orleans	1,369	3,033	242,251	586	1,002	92,035	783	2,031	150,216
Oswego	3,721	8,861	695,719	1,291	1,869	160,269	2,430	6,992	535,450
Otsego	1,305	2,534	188,393	457	518	38,862	848	2,016	149,531
Putnam	520	716	45,726	296	349	24,159	224	367	21,567
Rensselaer	4,125	8,568	724,945	1,866	2,964	287,362	2,259	5,604	437,583
Rockland	4,850	15,473	1,266,235	1,775	3,331	230,194	3,075	12,142	1,036,041
St. Lawrence	3,574	7,513	551,893	1,641	2,465	206,748	1,933	5,048	345,145
Saratoga	2,797	5,430	409,094	908	1,004	75,485	1,889	4,426	333,609
Schenectady	4,192	8,964	709,215	1,699	2,450	217,048	2,493	6,514	492,167
Schoharie	813	1,659	122,477	265	317	23,025	548	1,342	99,452
Schuyler	487	1,039	78,564	203	323	27,728	284	716	50,836
Seneca	872	1,683	121,691	324	445	35,029	548	1,238	86,662
Steuben	3,001	6,422	483,858	1,341	2,063	177,800	1,660	4,359	306,058
Suffolk	15,295	27,596	2,253,972	9,314	14,660	1,261,356	5,981	12,936	992,616
Sullivan	2,270	4,533	326,767	1,042	1,491	121,879	1,228	3,042	204,888
Tioga	1,122	2,471	190,120	492	755	69,367	630	1,716	120,753
Tompkins	1,978	3,750	281,555	979	1,457	119,792	999	2,293	161,763
Ulster	3,472	6,437	473,484	1,816	2,746	224,547	1,656	3,691	248,937
Warren	1,644	3,083	238,767	773	1,081	89,930	871	2,002	148,837
Washington	1,711	3,379	252,248	658	846	68,890	1,053	2,533	183,358
Wayne	2,525	4,741	353,404	1,049	1,412	121,875	1,476	3,329	231,529
Westchester	15,629	31,454	2,658,210	9,785	17,234	1,557,380	5,844	14,220	1,100,830
Wyoming	795	1,595	113,394	313	398	32,624	482	1,197	80,770
Yates	766	1,421	103,282	246	294	26,078	520	1,127	77,204

Note: Food Stamps households containing only SSI recipients are counted as TA in accordance with Federal reporting requirements.

Note: Rest of State data does not include the following FAP data: 40 households, 44 persons, and \$4,793 in expenditures.

Table 17  
**SUPPLEMENTAL SECURITY INCOME**  
 Recipients, Total Program Expenditures, Federal and State Shares, by Local District  
 May 2002

Local District	Expenditures			
	Recipients	Total	Federal	State
New York State*	626,666	\$290,350,166	\$242,612,591	\$47,737,575
New York City	398,700	191,669,336	163,759,927	27,909,409
Rest of State	218,072	95,237,866	76,623,124	18,614,742
Albany	6,188	2,722,930	2,164,275	558,655
Allegany	1,429	644,523	522,859	121,664
Broome	5,090	2,201,330	1,813,129	388,201
Cattaraugus	2,315	975,646	797,912	177,734
Cayuga	1,733	729,965	573,720	156,245
Chautauqua	3,918	1,674,635	1,361,949	312,686
Chemung	2,778	1,180,187	974,663	205,524
Chenango	1,318	531,937	451,048	80,889
Clinton	2,457	1,060,595	864,910	195,685
Columbia	1,476	621,297	473,410	147,887
Cortland	1,160	489,322	399,014	90,308
Delaware	1,186	468,813	375,732	93,081
Dutchess	4,321	1,880,063	1,424,302	455,761
Erie	24,864	11,343,872	9,328,350	2,015,522
Essex	955	391,981	290,520	101,461
Franklin	1,573	639,411	507,165	132,246
Fulton	1,615	680,287	541,500	138,787
Genesee	992	392,178	306,145	86,033
Greene	1,083	445,399	356,325	89,074
Hamilton	71	33,059	27,615	5,444
Herkimer	1,557	652,539	523,539	129,000
Jefferson	2,866	1,266,323	1,039,076	227,247
Lewis	622	251,662	204,811	46,851
Livingston	906	390,853	328,048	62,805
Madison	1,224	483,027	378,901	104,126
Monroe	17,791	8,200,750	6,729,349	1,471,401
Montgomery	1,333	522,646	425,530	97,116
Nassau	16,699	7,129,304	5,573,337	1,555,967
Niagara	4,780	2,067,712	1,671,182	396,530
Oneida	7,128	3,222,594	2,665,814	556,780
Onondaga	11,218	5,092,544	4,264,339	828,205
Ontario	1,524	643,895	520,366	123,529
Orange	5,950	2,530,107	2,052,749	477,358
Orleans	884	352,832	291,669	61,163
Oswego	2,878	1,239,923	1,041,850	198,073
Otsego	1,315	536,695	412,334	124,361
Putnam	723	312,474	225,130	87,344
Rensselaer	3,158	1,383,141	1,101,098	282,043
Rockland	4,438	2,045,649	1,493,014	552,635
St.Lawrence	3,635	1,562,957	1,305,253	257,704
Saratoga	2,465	970,956	773,198	197,758
Schenectady	3,760	1,671,784	1,360,215	311,569
Schoharie	689	267,579	199,012	68,567
Schuyler	452	196,010	157,513	38,497
Seneca	685	266,934	211,382	55,552
Steuben	2,900	1,250,992	1,049,829	201,163
Suffolk	20,584	8,934,324	6,885,839	2,048,485
Sullivan	2,532	1,113,701	823,376	290,325
Tioga	1,002	424,011	359,600	64,411
Tompkins	1,493	647,852	513,385	134,467
Ulster	3,960	1,721,424	1,386,426	334,998
Warren	1,401	534,969	425,733	109,236
Washington	1,364	549,594	442,928	106,666
Wayne	1,779	743,720	609,629	134,091
Westchester	14,799	6,532,026	5,294,046	1,237,980
Wyoming	615	241,291	192,118	49,173
Yates	441	175,642	136,963	38,679
Mental Hygiene	9,894	3,442,964	2,229,540	1,213,424

\* Only NYS includes Mental Hygiene

Table 18  
**SUPPLEMENTAL SECURITY INCOME**  
 SSI Recipients by Living Arrangement and Location  
 May 2002

Living Arrangement	New York State	New York City	Rest of State	Mental Hygiene
Living Alone	326,166	223,995	102,166	5
Living With Others	211,666	133,360	78,295	11
Living in Household of Another	24,275	15,489	8,785	1
Congregate Care Level I	5,622	606	450	4,566
Congregate Care Level II	36,867	14,182	22,099	586
Congregate Care Level III	164	35	129	0
Title XIX Institution	21,906	11,033	6,148	4,725
Total	626,666	398,700	218,072	9,894

Table 19  
**SUPPLEMENTAL SECURITY INCOME**  
 SSI Recipients by Living Arrangement and Category of Assistance  
 May 2002

Living Arrangement	Total	Category of Assistance		
		Aged	Blind	Disabled
Living Alone	326,166	100,991	1,662	223,513
Living With Others	211,666	17,420	1,078	193,168
Living in Household of Another	24,275	9,993	168	14,114
Congregate Care Level I	5,622	284	26	5,312
Congregate Care Level II	36,867	4,981	185	31,701
Congregate Care Level III	164	1	0	163
Title XIX Institution	21,906	3,696	129	18,081
Total	626,666	137,366	3,248	486,052

Table 20  
CHILD SUPPORT COLLECTIONS (IV-D)  
May 2002

Local District	Total	Current Assistance	Former Assistance	Never Assistance
New York State	\$132,111,347	\$9,950,433	\$52,934,488	\$69,226,426
New York City	48,550,959	5,407,490	21,995,148	21,148,321
Rest of State	83,560,388	4,542,943	30,939,340	48,078,105
Albany	2,263,255	95,888	694,597	1,472,770
Allegany	583,505	62,971	324,565	195,969
Broome	1,601,393	79,228	593,582	928,583
Cattaraugus	909,665	74,388	443,437	391,840
Cayuga	837,378	26,655	308,142	502,581
Chautauqua	1,448,029	115,787	879,790	452,452
Chemung	974,547	47,712	390,525	536,310
Chenango	559,631	25,219	191,029	343,383
Clinton	803,615	34,956	370,755	397,904
Columbia	491,745	15,420	175,066	301,259
Cortland	465,824	18,307	174,535	272,982
Delaware	478,979	55,788	160,562	262,629
Dutchess	2,353,293	89,828	632,544	1,630,921
Erie	5,895,584	384,530	3,172,005	2,339,049
Essex	383,228	12,570	203,394	167,264
Franklin	577,012	25,129	253,594	298,289
Fulton	576,087	17,807	216,585	341,695
Genesee	517,270	18,335	173,062	325,873
Greene	462,888	21,211	178,001	263,676
Hamilton	41,745	808	17,662	23,275
Herkimer	702,000	28,429	314,736	358,835
Jefferson	1,252,047	68,831	500,469	682,747
Lewis	268,852	7,330	96,822	164,700
Livingston	721,240	43,085	233,623	444,532
Madison	533,959	24,454	200,576	308,929
Monroe	5,730,739	484,707	2,628,669	2,617,363
Montgomery	511,765	29,715	218,423	263,627
Nassau	7,002,715	285,949	1,690,125	5,026,641
Niagara	1,842,155	123,587	968,619	749,949
Oneida	1,513,121	113,361	699,304	700,456
Onondaga	4,093,789	236,906	1,948,716	1,908,167
Ontario	987,925	47,379	324,223	616,323
Orange	2,831,527	149,825	839,754	1,841,948
Orleans	390,586	29,230	191,207	170,149
Oswego	1,273,159	56,817	641,642	574,700
Otsego	493,987	12,378	136,960	344,649
Putnam	656,785	5,744	102,616	548,425
Rensselaer	1,455,900	69,479	501,654	884,767
Rockland	1,791,369	79,129	478,016	1,234,224
St.Lawrence	1,051,910	46,340	520,664	484,906
Saratoga	1,541,988	27,466	295,860	1,218,662
Schenectady	1,301,961	46,817	396,081	859,063
Schoharie	311,656	16,230	121,585	173,841
Schuyler	158,807	5,420	48,494	104,893
Seneca	361,613	9,326	121,959	230,328
Steuben	915,780	53,400	436,808	425,572
Suffolk	10,327,805	552,817	2,851,710	6,923,278
Sullivan	610,087	40,626	243,225	326,236
Tioga	458,319	24,559	185,462	248,298
Tompkins	617,524	37,122	252,633	327,769
Ulster	1,407,820	60,263	413,231	934,326
Warren	792,538	22,431	260,459	509,648
Washington	697,561	33,576	220,056	443,929
Wayne	979,544	27,311	281,008	671,225
Westchester	5,164,595	399,742	1,798,793	2,966,060
Wyoming	372,906	14,172	138,723	220,011
Yates	209,681	6,453	83,003	120,225

Note: Effective February 1999, collection amounts include collections made on behalf of other states.