

NEW YORK STATE
OFFICE OF TEMPORARY AND DISABILITY ASSISTANCE
40 North Pearl Street, Albany, New York 12243-0001

George E. Pataki
Governor

Robert Doar
Acting Commissioner

Temporary and Disability Assistance Statistics NOVEMBER 2003

Temporary Assistance

Temporary Assistance: Temporary Assistance recipients totaled 615,341 in November 2003, decreasing by 6,727 (-1.1%) from the previous month. Related expenditures totaled \$145,944,469 in November 2003 decreasing approximately \$4.0 million (-2.7%) over October 2003.

Food Stamps

Food Stamps: Recipients of Food Stamps numbered 1,528,848 in November 2003, increasing by 12,964 (+0.9%) over October 2003. Food Stamps expenditures totaled \$151,246,364 in November 2003, decreasing by \$2.2 million (-1.4%) over the previous month.

Supplemental Security Income

Supplemental Security Income: For November 2003, SSI recipients (including Mental Hygiene) totaled 629,691 increasing 1,208 (+0.2%) from the previous month. SSI expenditures in November totaled \$295,247,487 increasing approximately \$181 thousand (+0.1%) from October 2003.

Table of Contents

Graphs

Total Temporary Assistance Recipients, January 1995 to Present	3
Food Stamp Persons, January 1995 to Present	3
Supplemental Security Income Persons, January 1995 to Present	3

Temporary Assistance and SSI Summary

Table 1: Total TA, Family Assistance, Safety Net Assistance and SSI Cases by Region	4
Table 2: Total TA, Family Assistance, Safety Net Assistance and SSI Recipients by Region	4
Table 3: Total TA, Family Assistance, Safety Net Assistance and SSI Expenditures by Region	4

Temporary Assistance by Program Area

Table 4: TA Year to Year Monthly Comparison Cases, Recipients and Expenditures	5
Table 5: TA Cases, Recipients, Children, Adults and Expenditures	6
Table 6: Family Assistance Cases, Recipients, Children, Adults and Expenditures	7
Table 7: Safety Net Assistance Cases, Recipients, Children, Adults and Expenditures	8

Temporary Assistance by Funding Source and Program Area

Table 8: TA by Funding Source (Temporary Assistance to Needy Families (TANF) and Non-TANF) Cases, Recipients and Expenditures	9
Table 9: TANF by Program (Family Assistance and Safety Net Assistance-FP) Cases, Recipients, Children, Adults and Expenditures	10
Table 10: Safety Net Assistance-FNP Cases, Recipients, Children, Adults and Expenditures	11
Table 11: Safety Net Assistance-FNP by Case Category (Maintenance of Effort (MOE) and Non-MOE) Cases, Recipients, Children, Adults and Expenditures	12
Table 12: Safety Net Assistance-FNP Cash Total Cases, Recipients, Children, Adults and Expenditures	13
Table 13: Safety Net Assistance-FNP Cash by Case Category (MOE and Non-MOE) Cases, Recipients, Children, Adults and Expenditures	14
Table 14: Safety Net Assistance-FNP Non-Cash Total Cases, Recipients, Children, Adults and Expenditures	15
Table 15: Safety Net Assistance-FNP Non-Cash by Case Category (MOE and Non-MOE) Cases, Recipients, Children, Adults and Expenditures	16

Food Stamps

Table 16: Food Stamp Households, Persons and Value of Food Stamp Benefits	17
--	----

Supplemental Security Income

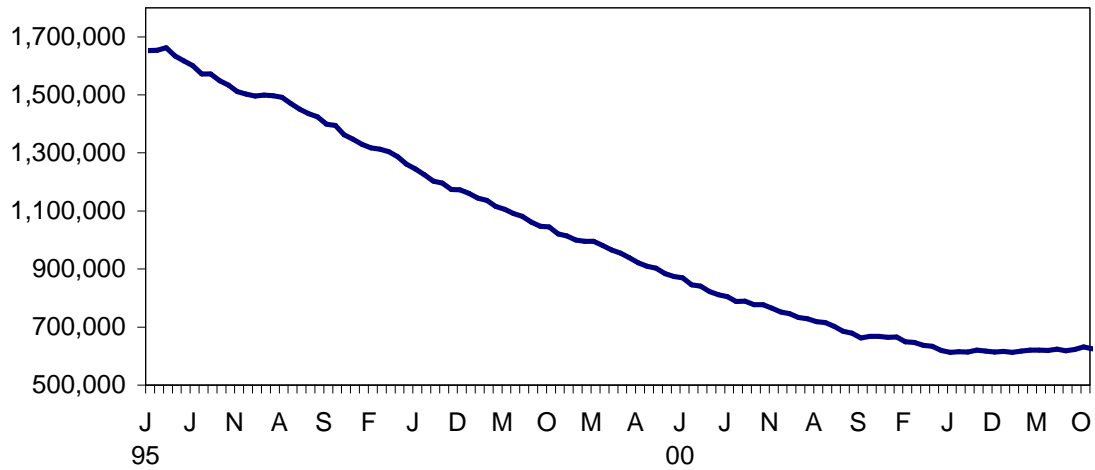
Table 17: SSI Recipients, Total Program Expenditures and State and Federal Shares	18
Table 18: SSI Recipients by Living Arrangement and Location	19
Table 19: SSI Recipients by Living Arrangement and Category of Assistance	19

Child Support

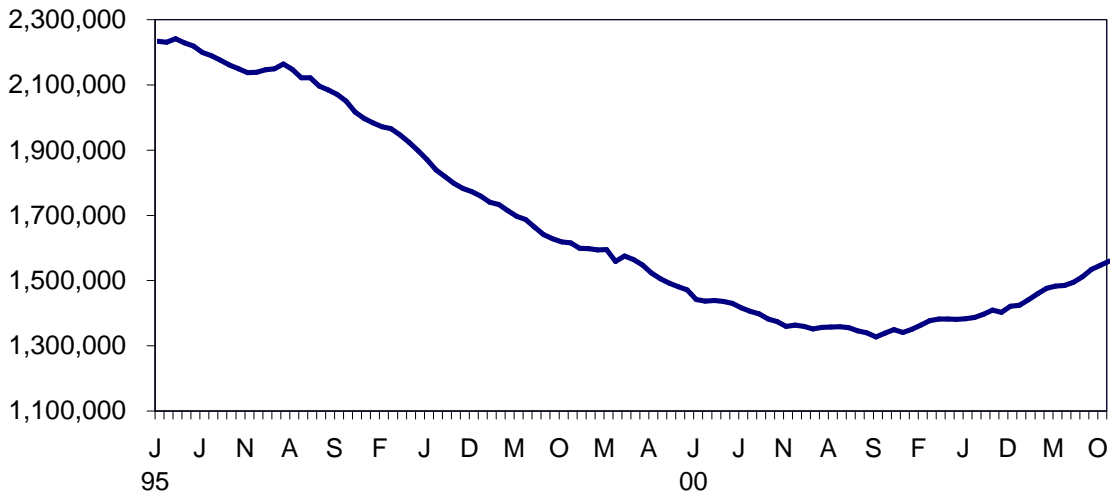
Table 20: Child Support Collections (IV-D)	20
---	----

NEW YORK STATE JANUARY 1995 - NOVEMBER 2003

TEMPORARY ASSISTANCE RECIPIENTS

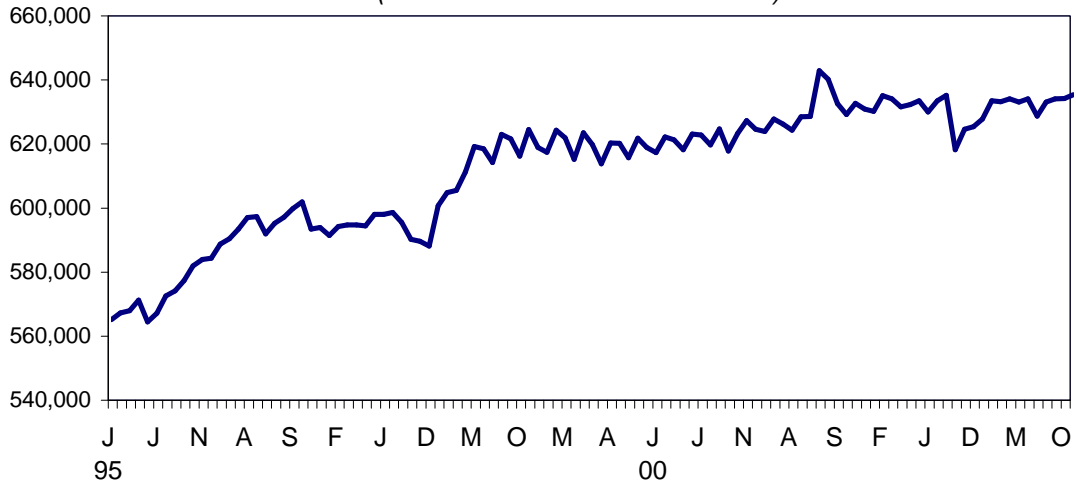


FOOD STAMPS PERSONS



SSI PERSONS

(INCLUDING MENTAL HYGIENE)



SELECTED SUMMARY PROGRAM DATA
BY REGION

Table 1
TEMPORARY AND DISABILITY ASSISTANCE CASES
November 2003

Region	Cases				
	Temporary Assistance by Program			Supplemental Security Income	Food Stamps
	Total	Family Assistance	Safety Net Assistance		
New York State	302,483	138,027	164,456	620,352	760,988
New York City	212,539	88,657	123,882	398,761	477,453
Rest of State	89,944	49,370	40,574	221,591	283,535

Table 2
TEMPORARY AND DISABILITY ASSISTANCE RECIPIENTS
November 2003

Region	Recipients				
	Temporary Assistance by Program			Supplemental Security Income	Food Stamps
	Total	Family Assistance	Safety Net Assistance		
New York State	615,341	320,288	295,053	620,352	1,528,848
New York City	428,916	201,236	227,680	398,761	930,011
Rest of State	186,425	119,052	67,373	221,591	598,837

Table 3
TEMPORARY AND DISABILITY ASSISTANCE EXPENDITURES
November 2003

Region	Expenditures				
	Temporary Assistance by Program			Supplemental Security Income	Food Stamps
	Total	Family Assistance	Safety Net Assistance		
New York State	\$145,944,469	\$75,765,805	\$70,178,664	\$292,234,287	\$151,246,364
New York City	96,169,000	46,899,000	49,270,000	192,741,108	99,309,771
Rest of State	49,775,469	28,866,805	20,908,664	99,493,179	51,936,593

Note: SSI data listed here do not include Mental Hygiene data. See Tables 17-19 for total SSI data.

Table 4
TEMPORARY ASSISTANCE
 Year to Year Monthly Comparison by Local District
 Cases, Recipients and Expenditures
 November 2003

Local District	November 2003			November 2002			November 2001		
	Cases	Recipients	Expenditures	Cases	Recipients	Expenditures	Cases	Recipients	Expenditures
New York State	302,483	615,341	\$145,944,469	294,634	607,932	\$138,506,817	311,686	659,160	\$141,657,501
New York City*	212,539	428,916	96,169,000	206,881	424,623	91,662,000	223,004	468,680	94,891,000
Rest of State	89,944	186,425	49,775,469	87,753	183,309	46,844,817	88,682	190,480	46,766,501
Albany	3,407	7,774	2,060,004	3,607	7,795	1,935,720	3,411	7,600	1,742,910
Allegany	502	1,033	196,659	497	1,129	189,438	468	1,067	173,738
Broome	2,344	4,844	1,094,245	2,164	4,473	992,843	1,866	3,999	860,452
Cattaraugus	630	1,248	257,959	629	1,304	261,517	643	1,374	274,359
Cayuga	439	905	185,681	409	877	168,204	400	884	163,250
Chautauqua	2,002	4,317	878,585	2,189	4,610	843,436	2,112	4,497	927,198
Chemung	1,350	2,839	565,358	1,107	2,358	452,325	870	1,965	355,310
Chenango	321	683	134,477	251	510	95,982	231	485	106,505
Clinton	776	1,359	366,270	727	1,268	344,800	607	1,078	260,848
Columbia	359	666	174,832	341	639	141,012	334	626	156,873
Cortland	406	877	182,434	435	945	195,200	418	895	194,624
Delaware	160	274	63,320	148	262	58,578	171	319	75,444
Dutchess	1,268	2,325	768,044	1,305	2,357	829,718	1,217	2,339	667,889
Erie	11,578	23,957	5,189,802	11,919	25,501	5,125,138	12,787	28,143	5,433,209
Essex	212	407	90,502	171	335	69,118	183	397	85,070
Franklin	331	618	137,733	306	613	137,464	264	490	97,820
Fulton	345	620	147,504	338	587	141,219	366	663	154,990
Genesee	336	653	167,558	269	555	120,704	297	627	132,009
Greene	428	840	203,881	420	815	185,609	411	812	174,162
Hamilton	12	22	4,381	11	17	2,810	15	20	6,847
Herkimer	340	667	148,725	311	574	122,989	319	653	151,215
Jefferson	928	1,843	411,095	906	1,810	407,930	970	2,025	456,539
Lewis	125	270	51,914	112	223	39,006	111	209	40,375
Livingston	581	1,092	272,053	575	1,102	296,078	560	1,074	270,511
Madison	155	257	70,239	156	258	67,800	168	300	75,946
Monroe	13,966	30,262	6,815,124	13,261	29,051	6,552,298	13,772	30,648	6,889,504
Montgomery	384	829	197,970	307	662	142,810	295	620	125,863
Nassau	4,284	8,333	2,871,456	4,023	7,895	2,567,389	4,151	8,347	2,378,919
Niagara	2,272	4,719	948,148	2,259	4,668	948,006	2,363	5,100	956,801
Oneida	2,296	5,307	1,025,082	2,147	4,982	916,049	2,195	5,284	934,707
Onondaga	6,467	13,779	2,914,296	5,982	12,720	2,658,374	6,193	13,552	2,726,548
Ontario	654	1,207	324,898	669	1,205	280,357	582	1,076	273,647
Orange	2,478	5,574	1,901,455	2,474	5,755	1,424,855	2,882	7,269	1,823,134
Orleans	397	799	171,225	433	868	186,280	459	1,015	207,681
Oswego	806	1,674	391,610	757	1,570	370,640	735	1,528	343,725
Otsego	176	254	112,127	136	189	89,743	114	193	56,442
Putnam	98	157	65,680	124	205	79,286	125	204	135,638
Rensselaer	1,247	2,704	622,638	1,241	2,679	604,069	1,220	2,695	523,337
Rockland	1,061	2,553	592,485	1,028	2,621	549,179	1,126	3,224	618,825
St.Lawrence	974	2,029	383,059	903	1,777	343,731	988	1,959	377,970
Saratoga	293	446	127,008	273	412	135,503	240	369	106,400
Schenectady	1,249	2,549	651,351	1,167	2,348	609,177	1,040	2,183	498,559
Schoharie	121	226	66,285	101	173	58,256	99	164	57,252
Schuyler	153	296	62,589	126	289	54,835	126	274	55,817
Seneca	184	337	77,312	160	285	63,487	147	285	59,475
Steuben	1,009	2,000	427,273	911	1,784	361,054	766	1,547	301,999
Suffolk	7,152	13,920	6,300,040	6,997	14,015	6,211,354	6,868	13,825	4,650,624
Sullivan	673	1,400	379,696	571	1,270	282,724	511	1,116	237,179
Tioga	401	789	174,160	369	731	165,116	292	594	131,363
Tompkins	724	1,418	344,636	666	1,262	326,903	616	1,191	312,493
Ulster	1,257	2,443	714,155	1,260	2,514	640,558	1,223	2,419	597,189
Warren	255	443	138,441	248	422	118,597	247	458	108,208
Washington	351	584	194,005	374	671	190,870	341	571	163,881
Wayne	554	991	241,426	524	931	213,435	444	808	186,407
Westchester	8,395	17,516	6,596,495	8,685	17,970	6,367,445	9,044	18,900	7,783,913
Wyoming	166	299	71,506	160	270	64,583	194	370	75,048
Yates	112	198	48,583	114	198	43,216	85	151	29,860

* Expenditures partially estimated.

Table 5
TEMPORARY ASSISTANCE
Cases, Recipients, Children, Adults and Expenditures by Local District
November 2003

Local District	Temporary Assistance				
	Cases	Recipients	Children	Adults	Expenditures
New York State	302,483	615,341	358,208	257,133	\$145,944,469
New York City*	212,539	428,916	245,927	182,989	96,169,000
Rest of State	89,944	186,425	112,281	74,144	49,775,469
Albany	3,407	7,774	4,811	2,963	2,060,004
Allegany	502	1,033	602	431	196,659
Broome	2,344	4,844	2,787	2,057	1,094,245
Cattaraugus	630	1,248	752	496	257,959
Cayuga	439	905	574	331	185,681
Chautauqua	2,002	4,317	2,634	1,683	878,585
Chemung	1,350	2,839	1,640	1,199	565,358
Chenango	321	683	421	262	134,477
Clinton	776	1,359	722	637	366,270
Columbia	359	666	381	285	174,832
Cortland	406	877	514	363	182,434
Delaware	160	274	154	120	63,320
Dutchess	1,268	2,325	1,443	882	768,044
Erie	11,578	23,957	14,562	9,395	5,189,802
Essex	212	407	217	190	90,502
Franklin	331	618	350	268	137,733
Fulton	345	620	345	275	147,504
Genesee	336	653	391	262	167,558
Greene	428	840	465	375	203,881
Hamilton	12	22	10	12	4,381
Herkimer	340	667	401	266	148,725
Jefferson	928	1,843	1,017	826	411,095
Lewis	125	270	159	111	51,914
Livingston	581	1,092	535	557	272,053
Madison	155	257	181	76	70,239
Monroe	13,966	30,262	18,434	11,828	6,815,124
Montgomery	384	829	484	345	197,970
Nassau	4,284	8,333	5,129	3,204	2,871,456
Niagara	2,272	4,719	2,776	1,943	948,148
Oneida	2,296	5,307	3,427	1,880	1,025,082
Onondaga	6,467	13,779	8,423	5,356	2,914,296
Ontario	654	1,207	636	571	324,898
Orange	2,478	5,574	3,604	1,970	1,901,455
Orleans	397	799	483	316	171,225
Oswego	806	1,674	1,080	594	391,610
Otsego	176	254	125	129	112,127
Putnam	98	157	85	72	65,680
Rensselaer	1,247	2,704	1,628	1,076	622,638
Rockland	1,061	2,553	1,705	848	592,485
St.Lawrence	974	2,029	1,218	811	383,059
Saratoga	293	446	305	141	127,008
Schenectady	1,249	2,549	1,683	866	651,351
Schoharie	121	226	135	91	66,285
Schuyler	153	296	156	140	62,589
Seneca	184	337	204	133	77,312
Steuben	1,009	2,000	1,084	916	427,273
Suffolk	7,152	13,920	8,000	5,920	6,300,040
Sullivan	673	1,400	889	511	379,696
Tioga	401	789	464	325	174,160
Tompkins	724	1,418	754	664	344,636
Ulster	1,257	2,443	1,540	903	714,155
Warren	255	443	237	206	138,441
Washington	351	584	321	263	194,005
Wayne	554	991	545	446	241,426
Westchester	8,395	17,516	10,379	7,137	6,596,495
Wyoming	166	299	166	133	71,506
Yates	112	198	114	84	48,583

* Expenditures partially estimated.

Table 6
FAMILY ASSISTANCE
Cases, Recipients, Children, Adults and Expenditures by Local District
November 2003

Local District	Family Assistance				
	Cases	Recipients	Children	Adults	Expenditures
New York State	138,027	320,288	231,063	89,225	\$75,765,805
New York City*	88,657	201,236	145,056	56,180	46,899,000
Rest of State	49,370	119,052	86,007	33,045	28,866,805
Albany	2,116	5,402	3,762	1,640	1,305,597
Allegany	313	733	501	232	128,579
Broome	1,335	3,235	2,224	1,011	637,901
Cattaraugus	373	884	647	237	159,640
Cayuga	305	699	508	191	133,720
Chautauqua	1,227	3,078	2,163	915	564,524
Chemung	855	2,118	1,423	695	382,860
Chenango	212	528	376	152	89,098
Clinton	429	934	647	287	198,466
Columbia	214	496	358	138	98,370
Cortland	250	656	449	207	116,609
Delaware	90	192	142	50	36,224
Dutchess	763	1,642	1,225	417	497,137
Erie	6,019	14,342	10,599	3,743	2,892,019
Essex	130	307	200	107	57,390
Franklin	197	437	311	126	80,520
Fulton	205	466	333	133	86,667
Genesee	191	458	340	118	96,282
Greene	271	633	419	214	143,029
Hamilton	3	10	7	3	1,801
Herkimer	221	526	380	146	99,167
Jefferson	491	1,209	842	367	225,949
Lewis	81	211	146	65	35,447
Livingston	309	734	462	272	152,500
Madison	101	191	164	27	44,932
Monroe	6,597	16,326	11,927	4,399	3,340,616
Montgomery	239	632	439	193	130,757
Nassau	2,497	5,599	4,182	1,417	1,837,989
Niagara	1,275	3,034	2,101	933	543,309
Oneida	1,442	3,796	2,781	1,015	661,541
Onondaga	3,687	9,257	6,654	2,603	1,777,579
Ontario	358	823	541	282	164,328
Orange	1,470	3,646	2,725	921	1,170,676
Orleans	227	552	401	151	106,982
Oswego	544	1,292	960	332	264,662
Otsego	74	143	116	27	41,707
Putnam	51	105	79	26	45,381
Rensselaer	918	2,305	1,564	741	446,418
Rockland	537	1,265	1,016	249	292,966
St.Lawrence	619	1,469	1,015	454	260,021
Saratoga	186	336	292	44	77,901
Schenectady	812	1,892	1,448	444	395,800
Schoharie	74	168	125	43	39,078
Schuyler	91	219	143	76	41,130
Seneca	101	222	164	58	42,522
Steuben	534	1,348	915	433	244,297
Suffolk	3,420	8,406	6,256	2,150	3,893,349
Sullivan	447	1,092	800	292	244,833
Tioga	262	595	408	187	121,402
Tompkins	392	954	627	327	203,581
Ulster	810	1,788	1,325	463	471,922
Warren	133	295	211	84	69,504
Washington	178	374	278	96	100,585
Wayne	286	674	492	182	139,974
Westchester	4,248	9,963	7,135	2,828	3,358,914
Wyoming	94	214	152	62	44,623
Yates	66	147	107	40	28,030

* Expenditures partially estimated.

Table 7
SAFETY NET ASSISTANCE
Cases, Recipients, Children, Adults and Expenditures by Local District
November 2003

Local District	Safety Net Assistance				
	Cases	Recipients	Children	Adults	Expenditures
New York State	164,456	295,053	127,145	167,908	\$70,178,664
New York City*	123,882	227,680	100,871	126,809	49,270,000
Rest of State	40,574	67,373	26,274	41,099	20,908,664
Albany	1,291	2,372	1,049	1,323	754,407
Allegany	189	300	101	199	68,080
Broome	1,009	1,609	563	1,046	456,344
Cattaraugus	257	364	105	259	98,319
Cayuga	134	206	66	140	51,961
Chautauqua	775	1,239	471	768	314,061
Chemung	495	721	217	504	182,498
Chenango	109	155	45	110	45,379
Clinton	347	425	75	350	167,804
Columbia	145	170	23	147	76,462
Cortland	156	221	65	156	65,825
Delaware	70	82	12	70	27,096
Dutchess	505	683	218	465	270,907
Erie	5,559	9,615	3,963	5,652	2,297,783
Essex	82	100	17	83	33,112
Franklin	134	181	39	142	57,213
Fulton	140	154	12	142	60,837
Genesee	145	195	51	144	71,276
Greene	157	207	46	161	60,852
Hamilton	9	12	3	9	2,580
Herkimer	119	141	21	120	49,558
Jefferson	437	634	175	459	185,146
Lewis	44	59	13	46	16,467
Livingston	272	358	73	285	119,553
Madison	54	66	17	49	25,307
Monroe	7,369	13,936	6,507	7,429	3,474,508
Montgomery	145	197	45	152	67,213
Nassau	1,787	2,734	947	1,787	1,033,467
Niagara	997	1,685	675	1,010	404,839
Oneida	854	1,511	646	865	363,541
Onondaga	2,780	4,522	1,769	2,753	1,136,717
Ontario	296	384	95	289	160,570
Orange	1,008	1,928	879	1,049	730,779
Orleans	170	247	82	165	64,243
Oswego	262	382	120	262	126,948
Otsego	102	111	9	102	70,420
Putnam	47	52	6	46	20,299
Rensselaer	329	399	64	335	176,220
Rockland	524	1,288	689	599	299,519
St.Lawrence	355	560	203	357	123,038
Saratoga	107	110	13	97	49,107
Schenectady	437	657	235	422	255,551
Schoharie	47	58	10	48	27,207
Schuyler	62	77	13	64	21,459
Seneca	83	115	40	75	34,790
Steuben	475	652	169	483	182,976
Suffolk	3,732	5,514	1,744	3,770	2,406,691
Sullivan	226	308	89	219	134,863
Tioga	139	194	56	138	52,758
Tompkins	332	464	127	337	141,055
Ulster	447	655	215	440	242,233
Warren	122	148	26	122	68,937
Washington	173	210	43	167	93,420
Wayne	268	317	53	264	101,452
Westchester	4,147	7,553	3,244	4,309	3,237,581
Wyoming	72	85	14	71	26,883
Yates	46	51	7	44	20,553

* Expenditures partially estimated.

Table 8
 TEMPORARY ASSISTANCE BY FUNDING SOURCE
 Cases, Recipients and Expenditures by Local District
 November 2003

Local District	Total			Federally Participating-TANF Family Assistance and Safety Net-FP			Federally Non-Participating Safety Net Assistance-FNP		
	Cases	Recipients	Expenditures	Cases	Recipients	Expenditures	Cases	Recipients	Expenditures
New York State	302,483	615,341	\$145,944,469	139,791	324,707	\$76,765,329	162,692	290,634	\$69,179,140
New York City*	212,539	428,916	96,169,000	88,874	201,658	46,962,000	123,665	227,258	49,207,000
Rest of State	89,944	186,425	49,775,469	50,917	123,049	29,803,329	39,027	63,376	19,972,140
Albany	3,407	7,774	2,060,004	2,156	5,497	1,327,920	1,251	2,277	732,084
Allegany	502	1,033	196,659	317	744	131,249	185	289	65,410
Broome	2,344	4,844	1,094,245	1,358	3,301	649,923	986	1,543	444,322
Cattaraugus	630	1,248	257,959	392	934	166,978	238	314	90,981
Cayuga	439	905	185,681	312	724	136,629	127	181	49,052
Chautauqua	2,002	4,317	878,585	1,254	3,149	577,910	748	1,168	300,675
Chemung	1,350	2,839	565,358	868	2,146	389,501	482	693	175,857
Chenango	321	683	134,477	214	534	89,566	107	149	44,911
Clinton	776	1,359	366,270	440	963	203,895	336	396	162,375
Columbia	359	666	174,832	215	497	98,425	144	169	76,407
Cortland	406	877	182,434	256	672	119,671	150	205	62,763
Delaware	160	274	63,320	90	192	36,224	70	82	27,096
Dutchess	1,268	2,325	768,044	780	1,675	509,324	488	650	258,720
Erie	11,578	23,957	5,189,802	6,302	15,037	3,031,058	5,276	8,920	2,158,744
Essex	212	407	90,502	131	310	57,772	81	97	32,730
Franklin	331	618	137,733	197	437	80,520	134	181	57,213
Fulton	345	620	147,504	209	475	88,453	136	145	59,051
Genesee	336	653	167,558	195	474	99,313	141	179	68,245
Greene	428	840	203,881	276	646	145,306	152	194	58,575
Hamilton	12	22	4,381	3	10	1,801	9	12	2,580
Herkimer	340	667	148,725	223	531	100,075	117	136	48,650
Jefferson	928	1,843	411,095	503	1,240	231,076	425	603	180,019
Lewis	125	270	51,914	81	211	35,447	44	59	16,467
Livingston	581	1,092	272,053	322	771	158,446	259	321	113,607
Madison	155	257	70,239	107	208	48,760	48	49	21,479
Monroe	13,966	30,262	6,815,124	7,136	17,768	3,638,619	6,830	12,494	3,176,505
Montgomery	384	829	197,970	242	645	132,271	142	184	65,699
Nassau	4,284	8,333	2,871,456	2,524	5,664	1,853,727	1,760	2,669	1,017,729
Niagara	2,272	4,719	948,148	1,304	3,113	554,570	968	1,606	393,578
Oneida	2,296	5,307	1,025,082	1,476	3,889	684,942	820	1,418	340,140
Onondaga	6,467	13,779	2,914,296	3,705	9,307	1,788,011	2,762	4,472	1,126,285
Ontario	654	1,207	324,898	365	843	169,357	289	364	155,541
Orange	2,478	5,574	1,901,455	1,493	3,704	1,187,159	985	1,870	714,296
Orleans	397	799	171,225	244	581	114,838	153	218	56,387
Oswego	806	1,674	391,610	557	1,332	271,574	249	342	120,036
Otsego	176	254	112,127	79	157	44,426	97	97	67,701
Putnam	98	157	65,680	54	112	46,282	44	45	19,398
Rensselaer	1,247	2,704	622,638	940	2,353	455,440	307	351	167,198
Rockland	1,061	2,553	592,485	546	1,284	295,200	515	1,269	297,285
St.Lawrence	974	2,029	383,059	622	1,476	260,436	352	553	122,623
Saratoga	293	446	127,008	187	338	78,119	106	108	48,889
Schenectady	1,249	2,549	651,351	828	1,932	407,114	421	617	244,237
Schoharie	121	226	66,285	74	168	39,078	47	58	27,207
Schuyler	153	296	62,589	91	219	41,130	62	77	21,459
Seneca	184	337	77,312	104	228	43,757	80	109	33,555
Steuben	1,009	2,000	427,273	537	1,356	246,750	472	644	180,523
Suffolk	7,152	13,920	6,300,040	3,492	8,590	3,952,121	3,660	5,330	2,347,919
Sullivan	673	1,400	379,696	458	1,127	254,320	215	273	125,376
Tioga	401	789	174,160	267	607	124,542	134	182	49,618
Tompkins	724	1,418	344,636	408	999	211,349	316	419	133,287
Ulster	1,257	2,443	714,155	839	1,868	496,136	418	575	218,019
Warren	255	443	138,441	137	309	71,678	118	134	66,763
Washington	351	584	194,005	181	379	102,023	170	205	91,982
Wayne	554	991	241,426	295	688	143,731	259	303	97,695
Westchester	8,395	17,516	6,596,495	4,370	10,273	3,506,686	4,025	7,243	3,089,809
Wyoming	166	299	71,506	95	215	44,671	71	84	26,835
Yates	112	198	48,583	66	147	28,030	46	51	20,553

* Expenditures partially estimated.

Table 9
 TEMPORARY ASSISTANCE TO NEEDY FAMILIES (TANF) BY PROGRAM
 Cases, Recipients, Children, Adults and Expenditures by Local District
 November 2003

Local District	Family Assistance					Safety Net Assistance-FP				
	Cases	Recipients	Children	Adults	Expenditures	Cases	Recipients	Children	Adults	Expenditures
New York State	138,027	320,288	231,063	89,225	\$75,765,805	1,764	4,419	2,582	1,837	\$999,524
New York City*	88,657	201,236	145,056	56,180	46,899,000	217	422	223	199	63,000
Rest of State	49,370	119,052	86,007	33,045	28,866,805	1,547	3,997	2,359	1,638	936,524
Albany	2,116	5,402	3,762	1,640	1,305,597	40	95	51	44	22,323
Allegany	313	733	501	232	128,579	4	11	8	3	2,670
Broome	1,335	3,235	2,224	1,011	637,901	23	66	39	27	12,022
Cattaraugus	373	884	647	237	159,640	19	50	26	24	7,338
Cayuga	305	699	508	191	133,720	7	25	16	9	2,909
Chautauqua	1,227	3,078	2,163	915	564,524	27	71	43	28	13,386
Chemung	855	2,118	1,423	695	382,860	13	28	14	14	6,641
Chenango	212	528	376	152	89,098	2	6	4	2	468
Clinton	429	934	647	287	198,466	11	29	16	13	5,429
Columbia	214	496	358	138	98,370	1	1	0	1	55
Cortland	250	656	449	207	116,609	6	16	9	7	3,062
Delaware	90	192	142	50	36,224	0	0	0	0	0
Dutchess	763	1,642	1,225	417	497,137	17	33	17	16	12,187
Erie	6,019	14,342	10,599	3,743	2,892,019	283	695	395	300	139,039
Essex	130	307	200	107	57,390	1	3	1	2	382
Franklin	197	437	311	126	80,520	0	0	0	0	0
Fulton	205	466	333	133	86,667	4	9	4	5	1,786
Genesee	191	458	340	118	96,282	4	16	10	6	3,031
Greene	271	633	419	214	143,029	5	13	8	5	2,277
Hamilton	3	10	7	3	1,801	0	0	0	0	0
Herkimer	221	526	380	146	99,167	2	5	3	2	908
Jefferson	491	1,209	842	367	225,949	12	31	15	16	5,127
Lewis	81	211	146	65	35,447	0	0	0	0	0
Livingston	309	734	462	272	152,500	13	37	19	18	5,946
Madison	101	191	164	27	44,932	6	17	9	8	3,828
Monroe	6,597	16,326	11,927	4,399	3,340,616	539	1,442	904	538	298,003
Montgomery	239	632	439	193	130,757	3	13	9	4	1,514
Nassau	2,497	5,599	4,182	1,417	1,837,989	27	65	38	27	15,738
Niagara	1,275	3,034	2,101	933	543,309	29	79	46	33	11,261
Oneida	1,442	3,796	2,781	1,015	661,541	34	93	54	39	23,401
Onondaga	3,687	9,257	6,654	2,603	1,777,579	18	50	30	20	10,432
Ontario	358	823	541	282	164,328	7	20	11	9	5,029
Orange	1,470	3,646	2,725	921	1,170,676	23	58	35	23	16,483
Orleans	227	552	401	151	106,982	17	29	12	17	7,856
Oswego	544	1,292	960	332	264,662	13	40	25	15	6,912
Otsego	74	143	116	27	41,707	5	14	8	6	2,719
Putnam	51	105	79	26	45,381	3	7	3	4	901
Rensselaer	918	2,305	1,564	741	446,418	22	48	24	24	9,022
Rockland	537	1,265	1,016	249	292,966	9	19	11	8	2,234
St.Lawrence	619	1,469	1,015	454	260,021	3	7	4	3	415
Saratoga	186	336	292	44	77,901	1	2	1	1	218
Schenectady	812	1,892	1,448	444	395,800	16	40	24	16	11,314
Schoharie	74	168	125	43	39,078	0	0	0	0	0
Schuyler	91	219	143	76	41,130	0	0	0	0	0
Seneca	101	222	164	58	42,522	3	6	3	3	1,235
Steuben	534	1,348	915	433	244,297	3	8	4	4	2,453
Suffolk	3,420	8,406	6,256	2,150	3,893,349	72	184	103	81	58,772
Sullivan	447	1,092	800	292	244,833	11	35	25	10	9,487
Tioga	262	595	408	187	121,402	5	12	8	4	3,140
Tompkins	392	954	627	327	203,581	16	45	28	17	7,768
Ulster	810	1,788	1,325	463	471,922	29	80	49	31	24,214
Warren	133	295	211	84	69,504	4	14	10	4	2,174
Washington	178	374	278	96	100,585	3	5	2	3	1,438
Wayne	286	674	492	182	139,974	9	14	5	9	3,757
Westchester	4,248	9,963	7,135	2,828	3,358,914	122	310	176	134	147,772
Wyoming	94	214	152	62	44,623	1	1	0	1	48
Yates	66	147	107	40	28,030	0	0	0	0	0

* Expenditures partially estimated.

Table 10
SAFETY NET ASSISTANCE-FNP
Cases, Recipients, Children, Adults and Expenditures by Local District
November 2003

Local District	Safety Net Assistance-FNP				
	Cases	Recipients	Children	Adults	Expenditures
New York State	162,692	290,634	124,563	166,071	\$69,179,140
New York City*	123,665	227,258	100,648	126,610	49,207,000
Rest of State	39,027	63,376	23,915	39,461	19,972,140
Albany	1,251	2,277	998	1,279	732,084
Allegany	185	289	93	196	65,410
Broome	986	1,543	524	1,019	444,322
Cattaraugus	238	314	79	235	90,981
Cayuga	127	181	50	131	49,052
Chautauqua	748	1,168	428	740	300,675
Chemung	482	693	203	490	175,857
Chenango	107	149	41	108	44,911
Clinton	336	396	59	337	162,375
Columbia	144	169	23	146	76,407
Cortland	150	205	56	149	62,763
Delaware	70	82	12	70	27,096
Dutchess	488	650	201	449	258,720
Erie	5,276	8,920	3,568	5,352	2,158,744
Essex	81	97	16	81	32,730
Franklin	134	181	39	142	57,213
Fulton	136	145	8	137	59,051
Genesee	141	179	41	138	68,245
Greene	152	194	38	156	58,575
Hamilton	9	12	3	9	2,580
Herkimer	117	136	18	118	48,650
Jefferson	425	603	160	443	180,019
Lewis	44	59	13	46	16,467
Livingston	259	321	54	267	113,607
Madison	48	49	8	41	21,479
Monroe	6,830	12,494	5,603	6,891	3,176,505
Montgomery	142	184	36	148	65,699
Nassau	1,760	2,669	909	1,760	1,017,729
Niagara	968	1,606	629	977	393,578
Oneida	820	1,418	592	826	340,140
Onondaga	2,762	4,472	1,739	2,733	1,126,285
Ontario	289	364	84	280	155,541
Orange	985	1,870	844	1,026	714,296
Orleans	153	218	70	148	56,387
Oswego	249	342	95	247	120,036
Otsego	97	97	1	96	67,701
Putnam	44	45	3	42	19,398
Rensselaer	307	351	40	311	167,198
Rockland	515	1,269	678	591	297,285
St.Lawrence	352	553	199	354	122,623
Saratoga	106	108	12	96	48,889
Schenectady	421	617	211	406	244,237
Schoharie	47	58	10	48	27,207
Schuyler	62	77	13	64	21,459
Seneca	80	109	37	72	33,555
Steuben	472	644	165	479	180,523
Suffolk	3,660	5,330	1,641	3,689	2,347,919
Sullivan	215	273	64	209	125,376
Tioga	134	182	48	134	49,618
Tompkins	316	419	99	320	133,287
Ulster	418	575	166	409	218,019
Warren	118	134	16	118	66,763
Washington	170	205	41	164	91,982
Wayne	259	303	48	255	97,695
Westchester	4,025	7,243	3,068	4,175	3,089,809
Wyoming	71	84	14	70	26,835
Yates	46	51	7	44	20,553

* Expenditures partially estimated.

Table 11
SAFETY NET ASSISTANCE-FNP BY CASE CATEGORY
(Maintenance of Effort (MOE) vs. Non-Maintenance of Effort (Non-MOE))
Cases, Recipients, Children, Adults and Expenditures by Local District
November 2003

Local District	Maintenance of Effort (MOE)					Non-Maintenance of Effort (Non-MOE)				
	Cases	Recipients	Children	Adults	Expenditures	Cases	Recipients	Children	Adults	Expenditures
New York State	48,803	159,949	111,364	48,585	\$25,234,658	113,889	130,685	13,199	117,486	\$43,944,482
New York City*	41,876	133,135	92,159	40,976	20,461,000	81,789	94,123	8,489	85,634	28,746,000
Rest of State	6,927	26,814	19,205	7,609	4,773,658	32,100	36,562	4,710	31,852	15,198,482
Albany	251	984	710	274	162,332	1,000	1,293	288	1,005	569,752
Allegany	27	98	63	35	12,037	158	191	30	161	53,373
Broome	151	594	416	178	71,078	835	949	108	841	373,244
Cattaraugus	22	76	50	26	10,414	216	238	29	209	80,567
Cayuga	15	65	46	19	6,529	112	116	4	112	42,523
Chautauqua	118	418	310	108	59,247	630	750	118	632	241,428
Chemung	57	233	167	66	26,635	425	460	36	424	149,222
Chenango	11	43	31	12	4,442	96	106	10	96	40,469
Clinton	13	46	31	15	6,295	323	350	28	322	156,080
Columbia	9	22	12	10	22,281	135	147	11	136	54,126
Cortland	18	67	46	21	9,701	132	138	10	128	53,062
Delaware	0	0	0	0	0	70	82	12	70	27,096
Dutchess	32	129	96	33	17,766	456	521	105	416	240,954
Erie	1,136	4,294	3,073	1,221	559,608	4,140	4,626	495	4,131	1,599,136
Essex	5	16	11	5	2,570	76	81	5	76	30,160
Franklin	18	59	38	21	9,516	116	122	1	121	47,697
Fulton	0	0	0	0	0	136	145	8	137	59,051
Genesee	11	46	35	11	5,802	130	133	6	127	62,443
Greene	10	39	29	10	5,502	142	155	9	146	53,073
Hamilton	1	4	3	1	290	8	8	0	8	2,290
Herkimer	5	17	11	6	1,964	112	119	7	112	46,686
Jefferson	50	197	135	62	24,408	375	406	25	381	155,611
Lewis	4	14	9	5	1,895	40	45	4	41	14,572
Livingston	12	42	27	15	6,901	247	279	27	252	106,706
Madison	0	0	0	0	0	48	49	8	41	21,479
Monroe	1,634	6,415	4,686	1,729	878,227	5,196	6,079	917	5,162	2,298,278
Montgomery	2	9	7	2	777	140	175	29	146	64,922
Nassau	264	874	596	278	209,028	1,496	1,795	313	1,482	808,701
Niagara	193	732	524	208	83,321	775	874	105	769	310,257
Oneida	162	689	510	179	76,789	658	729	82	647	263,351
Onondaga	424	1,734	1,280	454	229,313	2,338	2,738	459	2,279	896,972
Ontario	19	71	48	23	10,489	270	293	36	257	145,052
Orange	195	950	696	254	175,949	790	920	148	772	538,347
Orleans	19	73	52	21	10,867	134	145	18	127	45,520
Oswego	21	87	68	19	9,567	228	255	27	228	110,469
Otsego	0	0	0	0	0	97	97	1	96	67,701
Putnam	1	1	0	1	374	43	44	3	41	19,024
Rensselaer	13	51	38	13	6,836	294	300	2	298	160,362
Rockland	124	778	574	204	83,508	391	491	104	387	213,777
St.Lawrence	58	238	174	64	28,638	294	315	25	290	93,985
Saratoga	1	2	0	2	430	105	106	12	94	48,459
Schenectady	54	225	164	61	36,753	367	392	47	345	207,484
Schoharie	1	3	1	2	556	46	55	9	46	26,651
Schuyler	4	14	9	5	1,728	58	63	4	59	19,731
Seneca	3	12	9	3	791	77	97	28	69	32,764
Steuben	44	139	100	39	17,111	428	505	65	440	163,412
Suffolk	516	1,934	1,369	565	828,067	3,144	3,396	272	3,124	1,519,852
Sullivan	8	44	35	9	9,581	207	229	29	200	115,795
Tioga	10	36	26	10	3,333	124	146	22	124	46,285
Tompkins	27	102	74	28	11,827	289	317	25	292	121,460
Ulster	43	182	133	49	36,861	375	393	33	360	181,158
Warren	0	0	0	0	0	118	134	16	118	66,763
Washington	4	15	11	4	2,907	166	190	30	160	89,075
Wayne	13	43	29	14	5,319	246	260	19	241	92,376
Westchester	1,093	3,857	2,642	1,215	987,318	2,932	3,386	426	2,960	2,102,491
Wyoming	1	1	1	0	180	70	83	13	70	26,655
Yates	0	0	0	0	0	46	51	7	44	20,553

Table 12
SAFETY NET ASSISTANCE-FNP-CASH TOTAL
Cases, Recipients, Children, Adults and Expenditures by Local District
November 2003

Local District	Safety Net Assistance-FNP-Cash Total				
	Cases	Recipients	Children	Adults	Expenditures
New York State	See Note	See Note	See Note	See Note	See Note
New York City	See Note	See Note	See Note	See Note	See Note
Rest of State	21,396	24,059	2,871	21,188	\$9,434,419
Albany	584	653	74	579	289,170
Allegany	133	144	10	134	40,038
Broome	590	658	67	591	238,265
Cattaraugus	176	211	41	170	66,083
Cayuga	95	104	9	95	31,994
Chautauqua	454	476	21	455	156,162
Chemung	340	357	18	339	107,930
Chenango	81	89	8	81	32,854
Clinton	260	285	24	261	120,797
Columbia	109	116	4	112	58,721
Cortland	104	116	14	102	37,588
Delaware	62	73	11	62	21,759
Dutchess	296	329	64	265	135,800
Erie	2,226	2,698	488	2,210	844,160
Essex	66	71	4	67	22,983
Franklin	93	98	1	97	35,084
Fulton	101	107	7	100	34,208
Genesee	89	91	5	86	32,059
Greene	119	131	8	123	39,309
Hamilton	8	8	0	8	2,290
Herkimer	83	87	5	82	31,367
Jefferson	272	315	35	280	103,365
Lewis	34	39	5	34	10,158
Livingston	170	179	7	172	71,818
Madison	28	29	8	21	8,610
Monroe	2,816	3,389	606	2,783	1,200,541
Montgomery	85	94	5	89	31,026
Nassau	1,094	1,174	83	1,091	511,468
Niagara	489	530	47	483	176,529
Oneida	488	561	76	485	160,956
Onondaga	1,983	2,292	329	1,963	731,324
Ontario	198	208	19	189	77,907
Orange	549	626	92	534	346,859
Orleans	91	95	11	84	28,782
Oswego	153	167	12	155	63,806
Otsego	71	71	1	70	41,535
Putnam	30	31	2	29	11,031
Rensselaer	192	198	2	196	95,674
Rockland	206	219	17	202	100,563
St.Lawrence	235	252	19	233	67,818
Saratoga	76	78	12	66	24,479
Schenectady	256	271	35	236	122,411
Schoharie	35	37	1	36	18,326
Schuyler	55	66	9	57	17,370
Seneca	43	44	8	36	15,546
Steuben	338	358	14	344	115,004
Suffolk	2,468	2,731	283	2,448	1,221,091
Sullivan	144	178	41	137	77,110
Tioga	103	110	6	104	36,328
Tompkins	171	198	26	172	70,978
Ulster	232	243	25	218	99,268
Warren	75	76	2	74	42,769
Washington	131	154	27	127	62,129
Wayne	169	179	9	170	54,016
Westchester	1,755	1,864	104	1,760	1,203,463
Wyoming	46	50	3	47	15,187
Yates	46	51	7	44	20,553

Note: A breakout of Safety Net Assistance-FNP-Cash and Safety Net Assistance-FNP-Non-Cash data is not available for New York City.

Table 13
SAFETY NET ASSISTANCE-FNP-CASH BY CASE CATEGORY
(Maintenance of Effort (MOE) vs. Non-Maintenance of Effort (Non-MOE))
Cases, Recipients, Children, Adults and Expenditures by Local District
November 2003

Local District	Maintenance of Effort (MOE)					Non-Maintenance of Effort (Non-MOE)				
	Cases	Recipients	Children	Adults	Expenditures	Cases	Recipients	Children	Adults	Expenditures
New York State	See Note	See Note	See Note	See Note	See Note	See Note	See Note	See Note	See Note	See Note
New York City	See Note	See Note	See Note	See Note	See Note	See Note	See Note	See Note	See Note	See Note
Rest of State	662	1,954	1,233	721	\$390,990	20,734	22,105	1,638	20,467	\$9,043,429
Albany	20	67	47	20	9,352	564	586	27	559	279,818
Allegany	3	7	3	4	1,466	130	137	7	130	38,572
Broome	5	16	10	6	2,740	585	642	57	585	235,525
Cattaraugus	11	31	19	12	4,234	165	180	22	158	61,849
Cayuga	2	7	5	2	936	93	97	4	93	31,058
Chautauqua	0	0	0	0	0	454	476	21	455	156,162
Chemung	0	0	0	0	0	340	357	18	339	107,930
Chenango	1	5	4	1	405	80	84	4	80	32,449
Clinton	4	13	8	5	1,303	256	272	16	256	119,494
Columbia	3	3	0	3	19,725	106	113	4	109	38,996
Cortland	2	8	5	3	576	102	108	9	99	37,012
Delaware	0	0	0	0	0	62	73	11	62	21,759
Dutchess	5	11	6	5	1,932	291	318	58	260	133,868
Erie	117	374	250	124	55,967	2,109	2,324	238	2,086	788,193
Essex	0	0	0	0	0	66	71	4	67	22,983
Franklin	0	0	0	0	0	93	98	1	97	35,084
Fulton	0	0	0	0	0	101	107	7	100	34,208
Genesee	0	0	0	0	0	89	91	5	86	32,059
Greene	2	6	4	2	386	117	125	4	121	38,923
Hamilton	0	0	0	0	0	8	8	0	8	2,290
Herkimer	1	1	0	1	335	82	86	5	81	31,032
Jefferson	7	34	23	11	3,119	265	281	12	269	100,246
Lewis	1	2	1	1	298	33	37	4	33	9,860
Livingston	0	0	0	0	0	170	179	7	172	71,818
Madison	0	0	0	0	0	28	29	8	21	8,610
Monroe	182	575	375	200	96,079	2,634	2,814	231	2,583	1,104,462
Montgomery	1	1	0	1	295	84	93	5	88	30,731
Nassau	31	47	16	31	11,928	1,063	1,127	67	1,060	499,540
Niagara	4	10	5	5	1,431	485	520	42	478	175,098
Oneida	10	38	27	11	3,752	478	523	49	474	157,204
Onondaga	66	231	161	70	33,319	1,917	2,061	168	1,893	698,005
Ontario	2	2	0	2	702	196	206	19	187	77,205
Orange	22	63	37	26	23,055	527	563	55	508	323,804
Orleans	1	2	1	1	316	90	93	10	83	28,466
Oswego	1	5	4	1	2	152	162	8	154	63,804
Otsego	0	0	0	0	0	71	71	1	70	41,535
Putnam	1	1	0	1	374	29	30	2	28	10,657
Rensselaer		0				192	198	2	196	95,674
Rockland	8	13	4	9	1,868	198	206	13	193	98,695
St.Lawrence	3	10	7	3	1,801	232	242	12	230	66,017
Saratoga	1	2	0	2	430	75	76	12	64	24,049
Schenectady	3	4	0	4	1,428	253	267	35	232	120,983
Schoharie	0	0	0	0	0	35	37	1	36	18,326
Schuyler	2	8	6	2	1,027	53	58	3	55	16,343
Seneca	0	0	0	0	0	43	44	8	36	15,546
Steuben	0	0	0	0	0	338	358	14	344	115,004
Suffolk	69	183	107	76	72,887	2,399	2,548	176	2,372	1,148,204
Sullivan	5	31	26	5	4,848	139	147	15	132	72,262
Tioga	1	3	2	1	182	102	107	4	103	36,146
Tompkins	3	8	5	3	1,206	168	190	21	169	69,772
Ulster	0	0	0	0	0	232	243	25	218	99,268
Warren	0	0	0	0	0	75	76	2	74	42,769
Washington	4	15	11	4	2,907	127	139	16	123	59,222
Wayne	1	1	0	1	337	168	178	9	169	53,679
Westchester	57	116	54	62	28,042	1,698	1,748	50	1,698	1,175,421
Wyoming	0	0	0	0	0	46	50	3	47	15,187
Yates	0	0	0	0	0	46	51	7	44	20,553

Note: A breakout of Safety Net Assistance-FNP-Cash and Safety Net Assistance-FNP-Non-Cash data is not available for New York City.

Table 14
SAFETY NET ASSISTANCE-FNP-NON-CASH TOTAL
Cases, Recipients, Children, Adults and Expenditures by Local District
November 2003

Local District	Safety Net Assistance-FNP-Non-Cash Total				
	Cases	Recipients	Children	Adults	Expenditures
New York State	See Note	See Note	See Note	See Note	See Note
New York City	See Note	See Note	See Note	See Note	See Note
Rest of State	17,631	39,317	21,044	18,273	\$10,537,721
Albany	667	1,624	924	700	442,914
Allegany	52	145	83	62	25,372
Broome	396	885	457	428	206,057
Cattaraugus	62	103	38	65	24,898
Cayuga	32	77	41	36	17,058
Chautauqua	294	692	407	285	144,513
Chemung	142	336	185	151	67,927
Chenango	26	60	33	27	12,057
Clinton	76	111	35	76	41,578
Columbia	35	53	19	34	17,686
Cortland	46	89	42	47	25,175
Delaware	8	9	1	8	5,337
Dutchess	192	321	137	184	122,920
Erie	3,050	6,222	3,080	3,142	1,314,584
Essex	15	26	12	14	9,747
Franklin	41	83	38	45	22,129
Fulton	35	38	1	37	24,843
Genesee	52	88	36	52	36,186
Greene	33	63	30	33	19,266
Hamilton	1	4	3	1	290
Herkimer	34	49	13	36	17,283
Jefferson	153	288	125	163	76,654
Lewis	10	20	8	12	6,309
Livingston	89	142	47	95	41,789
Madison	20	20	0	20	12,869
Monroe	4,014	9,105	4,997	4,108	1,975,964
Montgomery	57	90	31	59	34,673
Nassau	666	1,495	826	669	506,261
Niagara	479	1,076	582	494	217,049
Oneida	332	857	516	341	179,184
Onondaga	779	2,180	1,410	770	394,961
Ontario	91	156	65	91	77,634
Orange	436	1,244	752	492	367,437
Orleans	62	123	59	64	27,605
Oswego	96	175	83	92	56,230
Otsego	26	26	0	26	26,166
Putnam	14	14	1	13	8,367
Rensselaer	115	153	38	115	71,524
Rockland	309	1,050	661	389	196,722
St.Lawrence	117	301	180	121	54,805
Saratoga	30	30	0	30	24,410
Schenectady	165	346	176	170	121,826
Schoharie	12	21	9	12	8,881
Schuyler	7	11	4	7	4,089
Seneca	37	65	29	36	18,009
Steuben	134	286	151	135	65,519
Suffolk	1,192	2,599	1,358	1,241	1,126,828
Sullivan	71	95	23	72	48,266
Tioga	31	72	42	30	13,290
Tompkins	145	221	73	148	62,309
Ulster	186	332	141	191	118,751
Warren	43	58	14	44	23,994
Washington	39	51	14	37	29,853
Wayne	90	124	39	85	43,679
Westchester	2,270	5,379	2,964	2,415	1,886,346
Wyoming	25	34	11	23	11,648
Yates	0	0	0	0	0

Note: A breakout of Safety Net Assistance-FNP-Cash and Safety Net Assistance-FNP-Non-Cash data is not available for New York City.

Table 15
SAFETY NET ASSISTANCE-FNP-NON-CASH BY CASE CATEGORY
(Maintenance of Effort (MOE) vs. Non-Maintenance of Effort (Non-MOE))
Cases, Recipients, Children, Adults and Expenditures by Local District
November 2003

Local District	Maintenance of Effort (MOE)					Non-Maintenance of Effort (Non-MOE)				
	Cases	Recipients	Children	Adults	Expenditures	Cases	Recipients	Children	Adults	Expenditures
New York State	See Note	See Note	See Note	See Note	See Note	See Note	See Note	See Note	See Note	See Note
New York City	See Note	See Note	See Note	See Note	See Note	See Note	See Note	See Note	See Note	See Note
Rest of State	6,265	24,860	17,972	6,888	\$4,382,668	11,366	14,457	3,072	11,385	\$6,155,053
Albany	231	917	663	254	152,980	436	707	261	446	289,934
Allegany	24	91	60	31	10,571	28	54	23	31	14,801
Broome	146	578	406	172	68,338	250	307	51	256	137,719
Cattaraugus	11	45	31	14	6,180	51	58	7	51	18,718
Cayuga	13	58	41	17	5,593	19	19	0	19	11,465
Chautauqua	118	418	310	108	59,247	176	274	97	177	85,266
Chemung	57	233	167	66	26,635	85	103	18	85	41,292
Chenango	10	38	27	11	4,037	16	22	6	16	8,020
Clinton	9	33	23	10	4,992	67	78	12	66	36,586
Columbia	6	19	12	7	2,556	29	34	7	27	15,130
Cortland	16	59	41	18	9,125	30	30	1	29	16,050
Delaware	0	0	0	0	0	8	9	1	8	5,337
Dutchess	27	118	90	28	15,834	165	203	47	156	107,086
Erie	1,019	3,920	2,823	1,097	503,641	2,031	2,302	257	2,045	810,943
Essex	5	16	11	5	2,570	10	10	1	9	7,177
Franklin	18	59	38	21	9,516	23	24	0	24	12,613
Fulton	0	0	0	0	0	35	38	1	37	24,843
Genesee	11	46	35	11	5,802	41	42	1	41	30,384
Greene	8	33	25	8	5,116	25	30	5	25	14,150
Hamilton	1	4	3	1	290	0	0	0	0	0
Herkimer	4	16	11	5	1,629	30	33	2	31	15,654
Jefferson	43	163	112	51	21,289	110	125	13	112	55,365
Lewis	3	12	8	4	1,597	7	8	0	8	4,712
Livingston	12	42	27	15	6,901	77	100	20	80	34,888
Madison	0	0	0	0	0	20	20	0	20	12,869
Monroe	1,452	5,840	4,311	1,529	782,148	2,562	3,265	686	2,579	1,193,816
Montgomery	1	8	7	1	482	56	82	24	58	34,191
Nassau	233	827	580	247	197,100	433	668	246	422	309,161
Niagara	189	722	519	203	81,890	290	354	63	291	135,159
Oneida	152	651	483	168	73,037	180	206	33	173	106,147
Onondaga	358	1,503	1,119	384	195,994	421	677	291	386	198,967
Ontario	17	69	48	21	9,787	74	87	17	70	67,847
Orange	173	887	659	228	152,894	263	357	93	264	214,543
Orleans	18	71	51	20	10,551	44	52	8	44	17,054
Oswego	20	82	64	18	9,565	76	93	19	74	46,665
Otsego	0	0	0	0	0	26	26	0	26	26,166
Putnam	0	0	0	0	0	14	14	1	13	8,367
Rensselaer	13	51	38	13	6,836	102	102	0	102	64,688
Rockland	116	765	570	195	81,640	193	285	91	194	115,082
St.Lawrence	55	228	167	61	26,837	62	73	13	60	27,968
Saratoga	0	0	0	0	0	30	30	0	30	24,410
Schenectady	51	221	164	57	35,325	114	125	12	113	86,501
Schoharie	1	3	1	2	556	11	18	8	10	8,325
Schuyler	2	6	3	3	701	5	5	1	4	3,388
Seneca	3	12	9	3	791	34	53	20	33	17,218
Steuben	44	139	100	39	17,111	90	147	51	96	48,408
Suffolk	447	1,751	1,262	489	755,180	745	848	96	752	371,648
Sullivan	3	13	9	4	4,733	68	82	14	68	43,533
Tioga	9	33	24	9	3,151	22	39	18	21	10,139
Tompkins	24	94	69	25	10,621	121	127	4	123	51,688
Ulster	43	182	133	49	36,861	143	150	8	142	81,890
Warren	0	0	0	0	0	43	58	14	44	23,994
Washington	0	0	0	0	0	39	51	14	37	29,853
Wayne	12	42	29	13	4,982	78	82	10	72	38,697
Westchester	1,036	3,741	2,588	1,153	959,276	1,234	1,638	376	1,262	927,070
Wyoming	1	1	1	0	180	24	33	10	23	11,468
Yates	0	0	0	0	0	0	0	0	0	0

Note: A breakout of Safety Net Assistance-FNP-Cash and Safety Net Assistance-FNP-Non-Cash data is not available for New York City.

Table 16
FOOD STAMPS
Households, Persons and Value of Food Stamps Benefits by Local District
November 2003

Local District	Total			Temporary Assistance			Non-Temporary Assistance		
	Households	Persons	Food Stamps Benefits	Households	Persons	Food Stamps Benefits	Households	Persons	Food Stamps Benefits
New York State	760,988	1,528,848	\$151,246,364	519,187	934,275	\$101,073,797	241,801	594,573	\$50,172,567
New York City	477,453	930,011	99,309,771	389,202	724,947	80,953,427	88,251	205,064	18,356,344
Rest of State	283,535	598,837	51,936,593	129,985	209,328	20,120,370	153,550	389,509	31,816,223
Albany	8,940	18,992	1,650,806	4,765	8,460	815,584	4,175	10,532	835,222
Allegany	2,010	4,147	327,638	903	1,372	123,054	1,107	2,775	204,584
Broome	6,992	14,263	1,243,851	3,434	5,557	556,076	3,558	8,706	687,775
Cattaraugus	3,192	6,521	495,252	1,228	1,720	148,699	1,964	4,801	346,553
Cayuga	2,325	5,186	425,689	804	1,156	104,450	1,521	4,030	321,239
Chautauqua	6,233	13,536	1,162,101	2,767	4,577	452,468	3,466	8,959	709,633
Chemung	3,718	8,430	719,973	1,735	2,977	298,488	1,983	5,453	421,485
Chenango	2,040	4,619	369,548	588	900	84,266	1,452	3,719	285,282
Clinton	3,406	6,484	545,003	1,551	2,038	193,273	1,855	4,446	351,730
Columbia	1,515	2,825	237,878	662	939	91,946	853	1,886	145,932
Cortland	1,760	3,719	306,526	723	1,093	98,768	1,037	2,626	207,758
Delaware	1,389	2,559	202,648	533	644	56,783	856	1,915	145,865
Dutchess	4,032	7,666	656,281	1,726	2,515	250,107	2,306	5,151	406,174
Erie	39,512	82,088	7,255,327	17,937	28,173	2,799,948	21,575	53,915	4,455,379
Essex	1,155	2,181	162,667	511	683	51,197	644	1,498	111,470
Franklin	1,836	3,742	299,332	710	940	79,418	1,126	2,802	219,914
Fulton	2,151	4,646	401,923	797	1,062	99,057	1,354	3,584	302,866
Genesee	1,512	3,263	267,746	549	761	71,056	963	2,502	196,690
Greene	1,467	2,977	255,770	642	945	93,607	825	2,032	162,163
Hamilton	168	245	12,929	28	37	3,293	140	208	9,636
Herkimer	2,418	5,178	434,768	756	1,002	88,730	1,662	4,176	346,038
Jefferson	4,006	8,851	713,014	1,576	2,326	202,627	2,430	6,525	510,387
Lewis	927	2,048	162,048	292	392	33,241	635	1,656	128,807
Livingston	1,861	3,742	326,491	790	1,267	126,643	1,071	2,475	199,848
Madison	1,835	3,927	332,094	578	673	56,989	1,257	3,254	275,105
Monroe	32,531	69,799	6,110,669	16,823	30,841	2,944,220	15,708	38,958	3,166,449
Montgomery	2,279	5,152	440,902	792	1,165	109,082	1,487	3,987	331,820
Nassau	10,874	19,423	1,868,831	6,228	9,575	1,001,327	4,646	9,848	867,504
Niagara	7,170	14,732	1,270,169	3,282	5,278	504,238	3,888	9,454	765,931
Oneida	10,463	22,562	1,908,476	4,080	6,258	590,373	6,383	16,304	1,318,103
Onondaga	16,318	36,760	3,301,436	7,308	12,888	1,292,838	9,010	23,872	2,008,598
Ontario	2,537	4,953	409,114	1,055	1,536	145,952	1,482	3,417	263,162
Orange	7,691	19,946	1,831,372	2,976	5,327	537,690	4,715	14,619	1,293,682
Orleans	1,459	3,229	268,451	576	898	88,059	883	2,331	180,392
Oswego	4,276	10,448	868,450	1,377	2,060	182,221	2,899	8,388	686,229
Otsego	1,444	2,896	232,242	461	527	44,641	983	2,369	187,601
Putnam	564	820	58,223	290	333	25,845	274	487	32,378
Rensselaer	4,318	9,234	820,102	1,898	3,105	307,700	2,420	6,129	512,402
Rockland	5,255	16,846	1,472,448	1,801	3,130	244,413	3,454	13,716	1,228,035
St.Lawrence	3,927	8,486	690,278	1,705	2,565	234,957	2,222	5,921	455,321
Saratoga	3,254	6,465	532,963	983	1,081	95,203	2,271	5,384	437,760
Schenectady	5,132	11,263	975,442	2,039	3,096	296,989	3,093	8,167	678,453
Schoharie	877	1,765	143,076	301	371	32,209	576	1,394	110,867
Schuyler	574	1,256	104,946	241	374	34,782	333	882	70,164
Seneca	943	1,879	147,603	316	434	38,025	627	1,445	109,578
Steuben	3,473	7,716	638,610	1,520	2,395	230,128	1,953	5,321	408,482
Suffolk	16,546	30,287	2,728,677	9,637	15,126	1,445,222	6,909	15,161	1,283,455
Sullivan	2,516	5,099	405,668	1,127	1,636	139,083	1,389	3,463	266,585
Tioga	1,444	3,274	281,624	560	877	89,201	884	2,397	192,423
Tompkins	2,263	4,493	378,821	1,069	1,613	147,959	1,194	2,880	230,862
Ulster	3,771	7,242	583,913	1,887	2,842	255,511	1,884	4,400	328,402
Warren	1,763	3,330	272,561	756	976	85,872	1,007	2,354	186,689
Washington	1,884	3,933	324,709	673	868	81,427	1,211	3,065	243,282
Wayne	2,748	5,334	428,823	1,113	1,446	138,415	1,635	3,888	290,408
Westchester	17,099	34,923	3,186,441	9,956	17,757	1,705,768	7,143	17,166	1,480,673
Wyoming	850	1,686	140,129	307	411	40,035	543	1,275	100,094
Yates	892	1,771	144,121	263	330	31,217	629	1,441	112,904

Note: Food Stamps households containing only SSI recipients are counted as TA in accordance with Federal reporting requirements.

Note: Statewide data does not include the following FAP data: 4 households, 4 persons and \$550 in expenditures.

Table 17
SUPPLEMENTAL SECURITY INCOME
 Recipients, Total Program Expenditures, Federal and State Shares, by Local District
 November 2003

Local District	Expenditures			
	Recipients	Total	Federal	State
New York State*	629,691	\$295,509,617	\$247,550,826	\$47,958,791
New York City	398,761	192,741,108	164,866,349	27,874,759
Rest of State	221,591	99,493,179	80,573,683	18,919,496
Albany	6,304	2,844,548	2,281,382	563,166
Allegany	1,467	662,640	539,232	123,408
Broome	5,248	2,448,289	2,029,065	419,224
Cattaraugus	2,356	1,130,458	939,792	190,666
Cayuga	1,759	780,258	621,083	159,175
Chautauqua	3,956	1,780,004	1,469,514	310,490
Chemung	2,863	1,231,575	1,017,832	213,743
Chenango	1,350	553,414	469,281	84,133
Clinton	2,532	1,096,579	901,700	194,879
Columbia	1,509	681,997	530,173	151,824
Cortland	1,182	512,809	417,261	95,548
Delaware	1,225	473,035	378,197	94,838
Dutchess	4,368	1,869,540	1,404,617	464,923
Erie	25,146	11,698,376	9,666,609	2,031,767
Essex	935	387,274	279,200	108,074
Franklin	1,594	693,555	557,887	135,668
Fulton	1,662	705,072	558,455	146,617
Genesee	1,012	401,342	312,577	88,765
Greene	1,140	546,047	448,790	97,257
Hamilton	75	28,104	23,390	4,714
Herkimer	1,553	621,582	499,237	122,345
Jefferson	2,871	1,311,534	1,083,088	228,446
Lewis	643	281,711	232,187	49,524
Livingston	949	415,271	350,013	65,258
Madison	1,253	531,175	420,083	111,092
Monroe	18,396	8,873,888	7,348,629	1,525,259
Montgomery	1,374	555,357	455,365	99,992
Nassau	16,602	7,231,258	5,678,546	1,552,712
Niagara	4,882	2,230,311	1,824,491	405,820
Oneida	7,292	3,306,581	2,758,031	548,550
Onondaga	11,644	5,675,809	4,781,268	894,541
Ontario	1,572	660,168	533,829	126,339
Orange	5,923	2,599,891	2,125,688	474,203
Orleans	883	349,020	285,726	63,294
Oswego	2,893	1,297,811	1,103,565	194,246
Otsego	1,303	534,127	410,400	123,727
Putnam	783	365,740	254,689	111,051
Rensselaer	3,152	1,356,118	1,084,218	271,900
Rockland	4,294	1,886,009	1,380,288	505,721
St.Lawrence	3,675	1,601,843	1,350,383	251,460
Saratoga	2,565	1,037,143	836,874	200,269
Schenectady	3,979	1,797,000	1,482,201	314,799
Schoharie	690	274,494	206,510	67,984
Schuyler	423	165,291	131,156	34,135
Seneca	679	281,818	228,321	53,497
Steuben	2,879	1,245,905	1,045,084	200,821
Suffolk	20,754	9,250,432	7,176,695	2,073,737
Sullivan	2,551	1,105,421	812,152	293,269
Tioga	999	454,621	389,066	65,555
Tompkins	1,544	695,030	549,110	145,920
Ulster	4,018	1,826,443	1,471,504	354,939
Warren	1,469	596,989	483,063	113,926
Washington	1,404	601,933	490,737	111,196
Wayne	1,811	797,014	652,867	144,147
Westchester	15,133	6,723,402	5,468,373	1,255,029
Wyoming	604	244,816	198,181	46,635
Yates	469	185,307	146,028	39,279
Mental Hygiene	9,339	3,275,330	2,110,794	1,164,536

* Only NYS includes Mental Hygiene

Table 18
SUPPLEMENTAL SECURITY INCOME
 SSI Recipients by Living Arrangement and Location
 November 2003

Living Arrangement	New York State	New York City	Rest of State	Mental Hygiene
Living Alone	328,371	225,203	103,154	14
Living With Others	213,807	133,024	80,776	7
Living in Household of Another	23,907	15,064	8,843	0
Congregate Care Level I	5,168	556	403	4,209
Congregate Care Level II	37,003	14,100	22,247	656
Congregate Care Level III	138	28	110	0
Title XIX Institution	21,297	10,786	6,058	4,453
Total	629,691	398,761	221,591	9,339

Table 19
SUPPLEMENTAL SECURITY INCOME
 SSI Recipients by Living Arrangement and Category of Assistance
 November 2003

Living Arrangement	Total	Category of Assistance		
		Aged	Blind	Disabled
Living Alone	328,371	100,387	1,638	226,346
Living With Others	213,807	17,278	1,052	195,477
Living in Household of Another	23,907	9,584	156	14,167
Congregate Care Level I	5,168	225	24	4,919
Congregate Care Level II	37,003	4,429	195	32,379
Congregate Care Level III	138	1	0	137
Title XIX Institution	21,297	3,444	137	17,716
Total	629,691	135,348	3,202	491,141

Table 20
CHILD SUPPORT COLLECTIONS (IV-D)
November 2003

Local District	Total	Current Assistance	Former Assistance	Never Assistance
New York State	\$103,386,189	\$6,160,789	\$35,792,444	\$61,432,956
New York City	36,579,074	3,273,716	14,291,288	19,014,070
Rest of State	66,807,115	2,887,073	21,501,156	42,418,886
Albany	1,901,983	67,118	513,937	1,320,928
Allegany	408,507	29,382	207,049	172,076
Broome	1,231,138	65,699	443,932	721,507
Cattaraugus	728,998	44,131	340,165	344,702
Cayuga	660,801	22,810	212,285	425,706
Chautauqua	1,092,314	57,722	605,743	428,849
Chemung	706,901	40,071	259,755	407,075
Chenango	408,403	14,821	113,198	280,384
Clinton	650,048	21,117	261,419	367,512
Columbia	436,435	11,726	140,796	283,913
Cortland	364,550	20,550	118,116	225,884
Delaware	324,207	9,833	98,478	215,896
Dutchess	2,004,653	73,256	467,732	1,463,665
Erie	4,527,533	233,110	2,245,471	2,048,952
Essex	271,962	11,245	144,561	116,156
Franklin	433,810	10,948	182,691	240,171
Fulton	464,393	10,655	152,405	301,333
Genesee	441,678	16,430	145,968	279,280
Greene	444,501	19,374	194,470	230,657
Hamilton	40,793	925	14,981	24,887
Herkimer	493,328	30,397	196,053	266,878
Jefferson	935,408	44,992	325,550	564,866
Lewis	221,115	5,729	69,222	146,164
Livingston	498,976	21,470	148,793	328,713
Madison	409,801	10,634	150,731	248,436
Monroe	4,512,440	288,972	1,875,556	2,347,912
Montgomery	390,991	26,614	149,001	215,376
Nassau	5,943,230	180,967	1,091,754	4,670,509
Niagara	1,324,995	61,497	666,131	597,367
Oneida	1,112,510	66,806	439,710	605,994
Onondaga	3,139,102	138,592	1,296,740	1,703,770
Ontario	795,266	25,739	227,934	541,593
Orange	2,350,354	102,927	570,290	1,677,137
Orleans	326,451	15,085	162,726	148,640
Oswego	1,015,397	35,056	459,785	520,556
Otsego	390,990	6,980	93,322	290,688
Putnam	516,994	3,059	62,597	451,338
Rensselaer	1,186,458	56,270	367,580	762,608
Rockland	1,644,297	45,124	342,107	1,257,066
St. Lawrence	821,648	36,224	397,902	387,522
Saratoga	1,302,496	15,320	206,601	1,080,575
Schenectady	1,065,907	34,502	239,190	792,215
Schoharie	268,574	11,145	91,938	165,491
Schuyler	125,774	5,868	33,719	86,187
Seneca	294,499	8,864	85,801	199,834
Steuben	715,818	31,293	321,865	362,660
Suffolk	8,500,907	353,471	1,948,837	6,198,599
Sullivan	484,967	42,263	168,605	274,099
Tioga	349,466	18,951	124,734	205,781
Tompkins	497,445	28,154	192,775	276,516
Ulster	1,151,668	35,972	292,835	822,861
Warren	609,586	16,215	173,050	420,321
Washington	542,924	18,747	154,076	370,101
Wayne	804,841	18,522	207,348	578,971
Westchester	4,035,401	247,912	1,138,443	2,649,046
Wyoming	312,403	11,940	104,701	195,762
Yates	171,080	3,877	60,002	107,201

Note: Effective February 1999, collection amounts include collections made on behalf of other states.