



NEW YORK STATE  
OFFICE OF TEMPORARY AND DISABILITY ASSISTANCE  
40 North Pearl Street, Albany, New York 12243-0001

George E. Pataki  
*Governor*

Robert Doar  
*Commissioner*

---

# Temporary and Disability Assistance Statistics MARCH 2004

---

## Temporary Assistance

Temporary Assistance: Temporary Assistance recipients totaled 632,773 in March 2004, increasing by 9,178 (+1.5%) from the previous month. Related expenditures totaled \$164,484,114 in March 2004 increasing approximately \$11.9 million (+7.8%) over February 2004.

## Food Stamps

Food Stamps: Recipients of Food Stamps numbered 1,603,591 in March 2004, increasing by 19,637 (+1.2%) over February 2004. Food Stamps expenditures totaled \$158,667,354 in March 2004, increasing by \$3.5 million (+2.2%) over the previous month.

## Supplemental Security Income

Supplemental Security Income: For March 2004, SSI recipients (including Mental Hygiene) totaled 628,853 increasing 190 (+0.0%) from the previous month. SSI expenditures in March totaled \$303,104,083 decreasing approximately \$1 million (-0.3%) from February 2004.

# Table of Contents

## Graphs

Total Temporary Assistance Recipients, January 1995 to Present	3
Food Stamp Persons, January 1995 to Present	3
Supplemental Security Income Persons, January 1995 to Present	3

## Temporary Assistance and SSI Summary

<b>Table 1:</b> Total TA, Family Assistance, Safety Net Assistance and SSI Cases by Region	4
<b>Table 2:</b> Total TA, Family Assistance, Safety Net Assistance and SSI Recipients by Region	4
<b>Table 3:</b> Total TA, Family Assistance, Safety Net Assistance and SSI Expenditures by Region	4

## Temporary Assistance by Program Area

<b>Table 4:</b> TA Year to Year Monthly Comparison Cases, Recipients and Expenditures	5
<b>Table 5:</b> TA Cases, Recipients, Children, Adults and Expenditures	6
<b>Table 6:</b> Family Assistance Cases, Recipients, Children, Adults and Expenditures	7
<b>Table 7:</b> Safety Net Assistance Cases, Recipients, Children, Adults and Expenditures	8

## Temporary Assistance by Funding Source and Program Area

<b>Table 8:</b> TA by Funding Source (Temporary Assistance to Needy Families (TANF) and Non-TANF) Cases, Recipients and Expenditures	9
<b>Table 9:</b> TANF by Program (Family Assistance and Safety Net Assistance-FP) Cases, Recipients, Children, Adults and Expenditures	10
<b>Table 10:</b> Safety Net Assistance-FNP Cases, Recipients, Children, Adults and Expenditures	11
<b>Table 11:</b> Safety Net Assistance-FNP by Case Category (Maintenance of Effort (MOE) and Non-MOE) Cases, Recipients, Children, Adults and Expenditures	12
<b>Table 12:</b> Safety Net Assistance-FNP Cash Total Cases, Recipients, Children, Adults and Expenditures	13
<b>Table 13:</b> Safety Net Assistance-FNP Cash by Case Category (MOE and Non-MOE) Cases, Recipients, Children, Adults and Expenditures	14
<b>Table 14:</b> Safety Net Assistance-FNP Non-Cash Total Cases, Recipients, Children, Adults and Expenditures	15
<b>Table 15:</b> Safety Net Assistance-FNP Non-Cash by Case Category (MOE and Non-MOE) Cases, Recipients, Children, Adults and Expenditures	16

## Food Stamps

<b>Table 16:</b> Food Stamp Households, Persons and Value of Food Stamp Benefits	17
--	----

## Supplemental Security Income

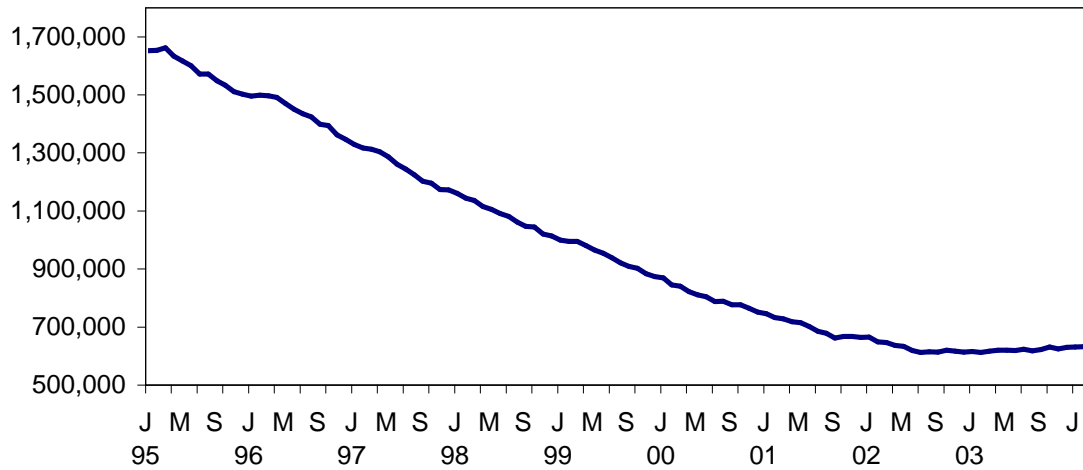
<b>Table 17:</b> SSI Recipients, Total Program Expenditures and State and Federal Shares	18
<b>Table 18:</b> SSI Recipients by Living Arrangement and Location	19
<b>Table 19:</b> SSI Recipients by Living Arrangement and Category of Assistance	19

## Child Support

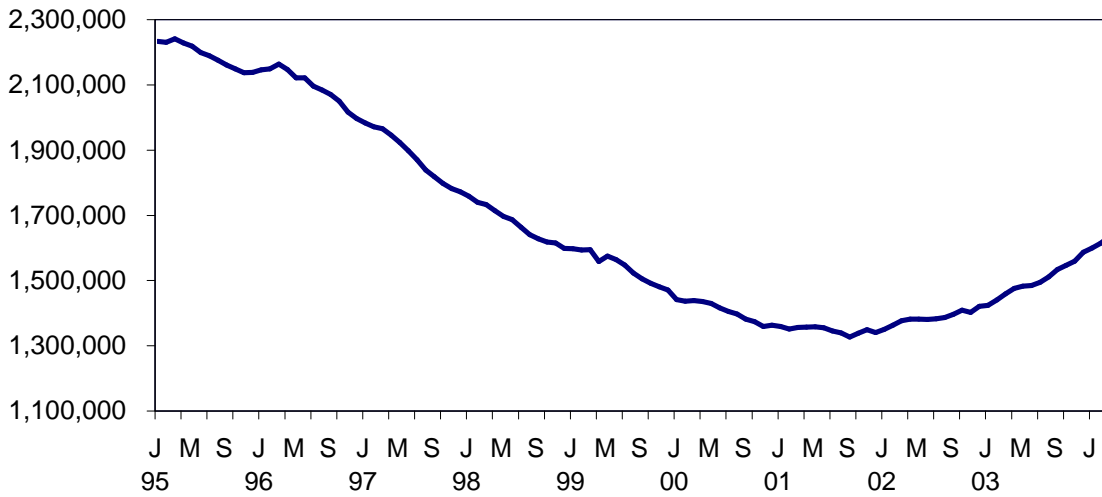
<b>Table 20:</b> Child Support Collections (IV-D)	20
---	----

# NEW YORK STATE JANUARY 1995 - MARCH 2004

## TEMPORARY ASSISTANCE RECIPIENTS

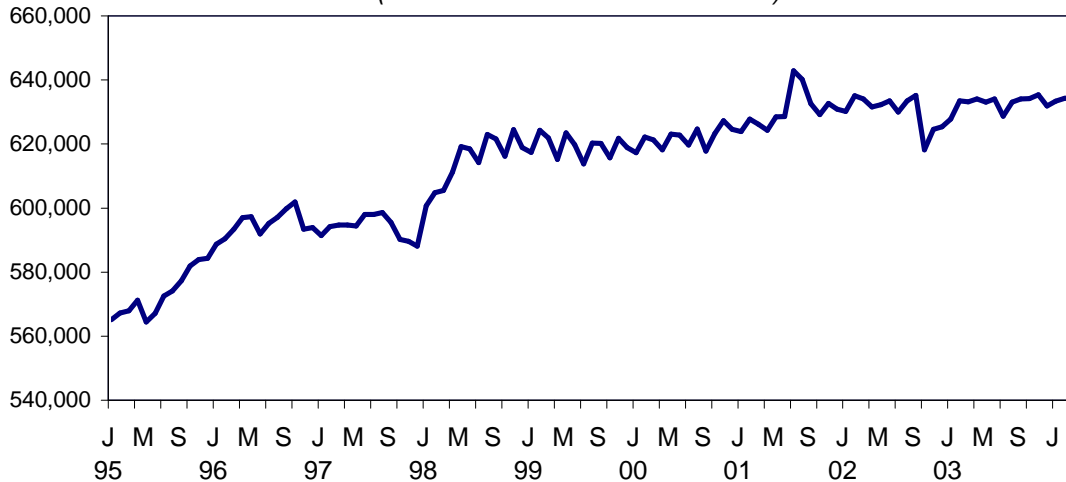


## FOOD STAMPS PERSONS



## SSI PERSONS

(INCLUDING MENTAL HYGIENE)



SELECTED SUMMARY PROGRAM DATA  
BY REGION

Table 1  
TEMPORARY AND DISABILITY ASSISTANCE CASES  
March 2004

Region	Cases				
	Temporary Assistance by Program			Supplemental Security Income	Food Stamps
	Total	Family Assistance	Safety Net Assistance		
New York State	310,935	139,703	171,232	619,672	799,544
New York City	215,526	89,357	126,169	397,889	502,049
Rest of State	95,409	50,346	45,063	221,783	297,495

Table 2  
TEMPORARY AND DISABILITY ASSISTANCE RECIPIENTS  
March 2004

Region	Recipients				
	Temporary Assistance by Program			Supplemental Security Income	Food Stamps
	Total	Family Assistance	Safety Net Assistance		
New York State	632,773	325,862	306,911	619,672	1,603,591
New York City	436,838	203,087	233,751	397,889	978,406
Rest of State	195,935	122,775	73,160	221,783	625,185

Table 3  
TEMPORARY AND DISABILITY ASSISTANCE EXPENDITURES  
March 2004

Region	Expenditures				
	Temporary Assistance by Program			Supplemental Security Income	Food Stamps
	Total	Family Assistance	Safety Net Assistance		
New York State	\$164,484,114	\$82,943,300	\$81,540,814	\$299,838,653	\$158,667,354
New York City	105,463,000	50,216,000	55,247,000	197,096,791	103,939,988
Rest of State	59,021,114	32,727,300	26,293,814	102,741,862	54,727,366

Note: SSI data listed here do not include Mental Hygiene data. See Tables 17-19 for total SSI data.

Table 4  
**TEMPORARY ASSISTANCE**  
 Year to Year Monthly Comparison by Local District  
 Cases, Recipients and Expenditures  
 March 2004

Local District	March 2004			March 2003			March 2002		
	Cases	Recipients	Expenditures	Cases	Recipients	Expenditures	Cases	Recipients	Expenditures
New York State	310,985	632,773	\$164,484,114	299,388	608,497	\$142,344,981	306,460	638,253	\$145,994,543
New York City*	215,526	436,838	105,463,000	207,418	420,666	90,622,000	214,863	446,266	95,013,000
Rest of State	95,409	195,935	59,021,114	91,970	187,831	51,722,981	91,597	191,987	50,981,543
Albany	3,465	7,752	2,286,552	3,664	7,917	2,136,657	3,477	7,309	1,883,059
Allegany	568	1,191	242,938	527	1,128	217,944	479	1,078	192,539
Broome	2,625	5,406	1,390,714	2,241	4,543	1,051,439	2,088	4,398	995,513
Cattaraugus	628	1,238	286,400	642	1,252	269,301	643	1,348	248,016
Cayuga	481	996	251,042	443	904	196,351	402	849	183,923
Chautauqua	2,030	4,337	1,016,726	2,295	4,744	1,026,401	2,306	4,903	1,005,358
Chemung	1,478	3,164	669,246	1,311	2,718	542,792	973	2,167	418,942
Chenango	374	785	173,063	275	540	118,496	236	495	109,414
Clinton	829	1,466	407,576	726	1,263	340,340	658	1,189	326,785
Columbia	358	657	172,521	364	657	189,131	406	731	194,304
Cortland	457	986	246,656	464	972	212,974	472	962	221,249
Delaware	190	326	95,399	163	292	68,466	161	282	62,562
Dutchess	1,335	2,464	1,069,776	1,232	2,206	826,907	1,350	2,424	762,816
Erie	12,244	25,246	6,030,047	11,980	25,127	5,365,480	12,756	27,374	5,649,486
Essex	211	425	68,060	200	391	72,867	213	420	104,960
Franklin	340	640	148,537	350	674	146,263	321	626	131,146
Fulton	370	681	182,969	360	657	153,526	413	781	177,911
Genesee	374	721	183,605	323	583	137,529	291	587	128,563
Greene	439	888	211,443	461	849	213,679	417	804	173,300
Hamilton	17	31	8,627	15	28	5,240	14	19	3,868
Herkimer	361	696	188,285	334	627	136,492	351	722	146,558
Jefferson	941	1,867	441,893	1,003	1,905	469,369	1,006	2,122	457,628
Lewis	137	287	60,667	117	237	44,560	127	246	49,637
Livingston	633	1,269	326,024	649	1,164	303,733	612	1,144	293,680
Madison	163	269	74,605	168	280	79,683	161	280	65,641
Monroe	14,803	31,745	7,460,022	13,849	29,752	8,063,816	13,932	30,748	7,813,099
Montgomery	433	902	258,357	330	689	166,376	336	747	178,446
Nassau	4,719	8,976	3,554,162	4,143	8,058	2,690,473	4,252	8,386	2,619,837
Niagara	2,418	4,904	1,123,037	2,297	4,606	1,006,986	2,492	5,282	1,046,555
Oneida	2,571	5,962	1,480,980	2,232	5,119	1,094,550	2,258	5,331	1,006,439
Onondaga	6,667	14,184	3,333,601	6,341	13,002	2,846,204	6,230	13,238	2,778,880
Ontario	770	1,435	362,494	716	1,263	324,596	665	1,223	303,402
Orange	2,349	5,457	1,548,107	2,530	5,682	1,576,829	2,716	6,196	1,637,377
Orleans	450	922	215,932	477	929	205,544	531	1,105	245,692
Oswego	854	1,748	475,276	913	1,812	511,126	805	1,677	376,409
Otsego	167	253	118,016	159	241	99,613	132	223	62,633
Putnam	130	215	82,316	118	216	89,956	122	196	76,954
Rensselaer	1,336	2,878	696,665	1,244	2,718	604,406	1,302	2,790	588,775
Rockland	1,129	2,604	732,672	1,067	2,644	643,971	1,161	3,086	696,498
St. Lawrence	1,120	2,302	547,761	982	1,946	428,980	1,061	2,038	452,895
Saratoga	295	442	151,491	308	462	172,601	277	424	135,751
Schenectady	1,299	2,668	799,619	1,241	2,443	659,720	1,102	2,201	587,495
Schoharie	141	267	75,620	117	182	69,403	85	151	47,241
Schuyler	192	388	89,216	159	347	69,915	141	326	65,749
Seneca	192	340	91,484	191	348	87,794	171	339	73,323
Steuben	1,184	2,397	564,702	1,108	2,190	504,616	931	1,768	412,244
Suffolk	7,768	14,633	7,704,967	7,726	14,717	6,057,834	7,215	14,456	5,866,531
Sullivan	741	1,514	429,993	655	1,362	341,889	629	1,282	340,581
Tioga	396	800	196,816	421	837	193,352	339	681	155,162
Tompkins	855	1,586	483,660	739	1,401	406,495	687	1,305	361,742
Ulster	1,266	2,375	715,819	1,316	2,481	749,337	1,258	2,517	669,829
Warren	269	477	168,244	285	497	153,496	290	538	126,824
Washington	368	636	228,287	362	592	192,706	362	605	183,783
Wayne	581	1,021	275,754	650	1,099	295,010	552	991	266,851
Westchester	8,579	17,545	8,672,122	8,700	18,045	6,979,426	8,941	18,410	7,706,603
Wyoming	165	270	72,458	177	304	69,890	180	292	68,416
Yates	154	301	78,093	110	189	40,451	109	175	42,667

\* Expenditures partially estimated.

Table 5  
**TEMPORARY ASSISTANCE**  
Cases, Recipients, Children, Adults and Expenditures by Local District  
March 2004

Local District	Temporary Assistance				
	Cases	Recipients	Children	Adults	Expenditures
New York State	310,935	632,773	365,162	267,611	\$164,484,114
New York City*	215,526	436,838	249,116	187,722	105,463,000
Rest of State	95,409	195,935	116,046	79,889	59,021,114
Albany	3,465	7,752	4,742	3,010	2,286,552
Allegany	568	1,191	677	514	242,938
Broome	2,625	5,406	3,058	2,348	1,390,714
Cattaraugus	628	1,238	733	505	286,400
Cayuga	481	996	630	366	251,042
Chautauqua	2,030	4,337	2,656	1,681	1,016,726
Chemung	1,478	3,164	1,813	1,351	669,246
Chenango	374	785	458	327	173,063
Clinton	829	1,466	751	715	407,576
Columbia	358	657	378	279	172,521
Cortland	457	986	559	427	246,656
Delaware	190	326	182	144	95,399
Dutchess	1,335	2,464	1,507	957	1,069,776
Erie	12,244	25,246	15,179	10,067	6,030,047
Essex	211	425	230	195	68,060
Franklin	340	640	362	278	148,537
Fulton	370	681	385	296	182,969
Genesee	374	721	402	319	183,605
Greene	439	888	490	398	211,443
Hamilton	17	31	13	18	8,627
Herkimer	361	696	408	288	188,285
Jefferson	941	1,867	1,037	830	441,893
Lewis	137	287	161	126	60,667
Livingston	633	1,269	644	625	326,024
Madison	163	269	184	85	74,605
Monroe	14,803	31,745	19,068	12,677	7,460,022
Montgomery	433	902	509	393	258,357
Nassau	4,719	8,976	5,325	3,651	3,554,162
Niagara	2,418	4,904	2,835	2,069	1,123,037
Oneida	2,571	5,962	3,760	2,202	1,480,980
Onondaga	6,667	14,184	8,617	5,567	3,333,601
Ontario	770	1,435	737	698	362,494
Orange	2,349	5,457	3,568	1,889	1,548,107
Orleans	450	922	528	394	215,932
Oswego	854	1,748	1,103	645	475,276
Otsego	167	253	141	112	118,016
Putnam	130	215	109	106	82,316
Rensselaer	1,336	2,878	1,693	1,185	696,665
Rockland	1,129	2,604	1,698	906	732,672
St.Lawrence	1,120	2,302	1,315	987	547,761
Saratoga	295	442	298	144	151,491
Schenectady	1,299	2,668	1,745	923	799,619
Schoharie	141	267	151	116	75,620
Schuyler	192	388	190	198	89,216
Seneca	192	340	196	144	91,484
Steuben	1,184	2,397	1,291	1,106	564,702
Suffolk	7,768	14,633	8,112	6,521	7,704,967
Sullivan	741	1,514	928	586	429,993
Tioga	396	800	482	318	196,816
Tompkins	855	1,586	806	780	483,660
Ulster	1,266	2,375	1,503	872	715,819
Warren	269	477	253	224	168,244
Washington	368	636	359	277	228,287
Wayne	581	1,021	550	471	275,754
Westchester	8,579	17,545	10,231	7,314	8,672,122
Wyoming	165	270	147	123	72,458
Yates	154	301	159	142	78,093

\* Expenditures partially estimated.

Table 6  
**FAMILY ASSISTANCE**  
Cases, Recipients, Children, Adults and Expenditures by Local District  
March 2004

Local District	Family Assistance				
	Cases	Recipients	Children	Adults	Expenditures
New York State	139,703	325,862	234,544	91,318	\$82,943,300
New York City*	89,357	203,087	145,983	57,104	50,216,000
Rest of State	50,346	122,775	88,561	34,214	32,727,300
Albany	2,030	5,137	3,587	1,550	1,299,909
Allegany	340	856	574	282	162,520
Broome	1,442	3,570	2,437	1,133	784,881
Cattaraugus	371	896	648	248	173,966
Cayuga	321	751	549	202	166,304
Chautauqua	1,189	3,014	2,156	858	649,328
Chemung	907	2,321	1,564	757	435,565
Chenango	233	596	414	182	112,046
Clinton	450	1,015	682	333	223,754
Columbia	207	485	353	132	103,320
Cortland	273	709	480	229	152,022
Delaware	100	227	171	56	50,541
Dutchess	774	1,711	1,282	429	593,793
Erie	6,312	15,206	11,190	4,016	3,318,790
Essex	116	302	203	99	41,056
Franklin	201	453	316	137	96,541
Fulton	224	520	369	151	109,258
Genesee	197	495	355	140	103,649
Greene	248	629	427	202	124,331
Hamilton	7	18	10	8	3,758
Herkimer	226	541	387	154	111,887
Jefferson	492	1,231	869	362	249,048
Lewis	81	216	149	67	40,179
Livingston	324	864	561	303	173,416
Madison	105	200	167	33	45,187
Monroe	6,751	16,776	12,225	4,551	3,575,060
Montgomery	248	660	454	206	152,450
Nassau	2,586	5,848	4,329	1,519	2,213,143
Niagara	1,301	3,111	2,166	945	636,680
Oneida	1,580	4,251	3,071	1,180	966,883
Onondaga	3,761	9,439	6,779	2,660	2,010,598
Ontario	387	928	614	314	193,607
Orange	1,363	3,536	2,675	861	955,611
Orleans	231	614	443	171	127,331
Oswego	547	1,323	981	342	295,433
Otsego	78	152	126	26	47,040
Putnam	57	132	100	32	42,205
Rensselaer	932	2,361	1,586	775	467,351
Rockland	561	1,283	1,021	262	358,918
St. Lawrence	668	1,622	1,100	522	351,144
Saratoga	180	317	279	38	78,701
Schenectady	804	1,953	1,510	443	452,948
Schoharie	81	191	141	50	43,854
Schuyler	107	284	176	108	53,707
Seneca	103	220	161	59	48,510
Steuben	632	1,641	1,097	544	333,079
Suffolk	3,423	8,464	6,307	2,157	4,372,734
Sullivan	456	1,146	839	307	271,451
Tioga	255	602	426	176	130,510
Tompkins	446	1,050	689	361	248,892
Ulster	791	1,718	1,297	421	450,337
Warren	133	312	227	85	72,616
Washington	195	426	315	111	113,337
Wayne	267	629	462	167	128,405
Westchester	4,073	9,410	6,781	2,629	4,126,811
Wyoming	88	181	130	51	39,104
Yates	91	232	154	78	43,801

\* Expenditures partially estimated.

Table 7  
SAFETY NET ASSISTANCE  
Cases, Recipients, Children, Adults and Expenditures by Local District  
March 2004

Local District	Safety Net Assistance				
	Cases	Recipients	Children	Adults	Expenditures
New York State	171,232	306,911	130,618	176,293	\$81,540,814
New York City*	126,169	233,751	103,133	130,618	55,247,000
Rest of State	45,063	73,160	27,485	45,675	26,293,814
Albany	1,435	2,615	1,155	1,460	986,643
Allegany	228	335	103	232	80,418
Broome	1,183	1,836	621	1,215	605,833
Cattaraugus	257	342	85	257	112,434
Cayuga	160	245	81	164	84,738
Chautauqua	841	1,323	500	823	367,398
Chemung	571	843	249	594	233,681
Chenango	141	189	44	145	61,017
Clinton	379	451	69	382	183,822
Columbia	151	172	25	147	69,201
Cortland	184	277	79	198	94,634
Delaware	90	99	11	88	44,858
Dutchess	561	753	225	528	475,983
Erie	5,932	10,040	3,989	6,051	2,711,257
Essex	95	123	27	96	27,004
Franklin	139	187	46	141	51,996
Fulton	146	161	16	145	73,711
Genesee	177	226	47	179	79,956
Greene	191	259	63	196	87,112
Hamilton	10	13	3	10	4,869
Herkimer	135	155	21	134	76,398
Jefferson	449	636	168	468	192,845
Lewis	56	71	12	59	20,488
Livingston	309	405	83	322	152,608
Madison	58	69	17	52	29,418
Monroe	8,052	14,969	6,843	8,126	3,884,962
Montgomery	185	242	55	187	105,907
Nassau	2,133	3,128	996	2,132	1,341,019
Niagara	1,117	1,793	669	1,124	486,357
Oneida	991	1,711	689	1,022	514,097
Onondaga	2,906	4,745	1,838	2,907	1,323,003
Ontario	383	507	123	384	168,887
Orange	986	1,921	893	1,028	592,496
Orleans	219	308	85	223	88,601
Oswego	307	425	122	303	179,843
Otsego	89	101	15	86	70,976
Putnam	73	83	9	74	40,111
Rensselaer	404	517	107	410	229,314
Rockland	568	1,321	677	644	373,754
St.Lawrence	452	680	215	465	196,617
Saratoga	115	125	19	106	72,790
Schenectady	495	715	235	480	346,671
Schoharie	60	76	10	66	31,766
Schuyler	85	104	14	90	35,509
Seneca	89	120	35	85	42,974
Steuben	552	756	194	562	231,623
Suffolk	4,345	6,169	1,805	4,364	3,332,233
Sullivan	285	368	89	279	158,542
Tioga	141	198	56	142	66,306
Tompkins	409	536	117	419	234,768
Ulster	475	657	206	451	265,482
Warren	136	165	26	139	95,628
Washington	173	210	44	166	114,950
Wayne	314	392	88	304	147,349
Westchester	4,506	8,135	3,450	4,685	4,545,311
Wyoming	77	89	17	72	33,354
Yates	63	69	5	64	34,292

\* Expenditures partially estimated.



Table 8  
 TEMPORARY ASSISTANCE BY FUNDING SOURCE  
 Cases, Recipients and Expenditures by Local District  
 March 2004

Local District	Total			Federally Participating-TANF Family Assistance and Safety Net-FP			Federally Non-Participating Safety Net Assistance-FNP		
	Cases	Recipients	Expenditures	Cases	Recipients	Expenditures	Cases	Recipients	Expenditures
New York State	310,935	632,773	\$164,484,114	141,528	330,443	\$84,216,481	169,407	302,330	\$80,267,633
New York City*	215,526	436,838	105,463,000	89,573	203,537	50,296,000	125,953	233,301	55,167,000
Rest of State	95,409	195,935	59,021,114	51,955	126,906	33,920,481	43,454	69,029	25,100,633
Albany	3,465	7,752	2,286,552	2,079	5,261	1,333,901	1,386	2,491	952,651
Allegany	568	1,191	242,938	342	863	162,931	226	328	80,007
Broome	2,625	5,406	1,390,714	1,470	3,654	797,064	1,155	1,752	593,650
Cattaraugus	628	1,238	286,400	380	919	178,458	248	319	107,942
Cayuga	481	996	251,042	329	777	170,243	152	219	80,799
Chautauqua	2,030	4,337	1,016,726	1,212	3,071	661,243	818	1,266	355,483
Chemung	1,478	3,164	669,246	921	2,354	441,638	557	810	227,608
Chenango	374	785	173,063	235	602	113,432	139	183	59,631
Clinton	829	1,466	407,576	456	1,031	227,090	373	435	180,486
Columbia	358	657	172,521	208	486	103,774	150	171	68,747
Cortland	457	986	246,656	281	731	156,705	176	255	89,951
Delaware	190	326	95,399	100	227	50,541	90	99	44,858
Dutchess	1,335	2,464	1,069,776	795	1,763	632,553	540	701	437,223
Erie	12,244	25,246	6,030,047	6,580	15,886	3,464,295	5,664	9,360	2,565,752
Essex	211	425	68,060	119	313	41,847	92	112	26,213
Franklin	340	640	148,537	203	457	96,794	137	183	51,743
Fulton	370	681	182,969	228	531	113,096	142	150	69,873
Genesee	374	721	183,605	203	511	107,749	171	210	75,856
Greene	439	888	211,443	254	647	126,355	185	241	85,088
Hamilton	17	31	8,627	7	18	3,758	10	13	4,869
Herkimer	361	696	188,285	230	551	113,744	131	145	74,541
Jefferson	941	1,867	441,893	514	1,280	260,183	427	587	181,710
Lewis	137	287	60,667	81	216	40,179	56	71	20,488
Livingston	633	1,269	326,024	344	915	187,509	289	354	138,515
Madison	163	269	74,605	111	212	48,717	52	57	25,888
Monroe	14,803	31,745	7,460,022	7,298	18,179	3,894,617	7,505	13,566	3,565,405
Montgomery	433	902	258,357	255	679	156,687	178	223	101,670
Nassau	4,719	8,976	3,554,162	2,612	5,918	2,225,963	2,107	3,058	1,328,199
Niagara	2,418	4,904	1,123,037	1,342	3,211	658,399	1,076	1,693	464,638
Oneida	2,571	5,962	1,480,980	1,621	4,356	1,003,587	950	1,606	477,393
Onondaga	6,667	14,184	3,333,601	3,788	9,512	2,023,829	2,879	4,672	1,309,772
Ontario	770	1,435	362,494	401	972	201,271	369	463	161,223
Orange	2,349	5,457	1,548,107	1,382	3,587	974,098	967	1,870	574,009
Orleans	450	922	215,932	241	632	133,436	209	290	82,496
Oswego	854	1,748	475,276	558	1,359	302,091	296	389	173,185
Otsego	167	253	118,016	82	162	50,791	85	91	67,225
Putnam	130	215	82,316	63	142	49,617	67	73	32,699
Rensselaer	1,336	2,878	696,665	961	2,427	478,446	375	451	218,219
Rockland	1,129	2,604	732,672	569	1,303	362,764	560	1,301	369,908
St.Lawrence	1,120	2,302	547,761	671	1,630	352,078	449	672	195,683
Saratoga	295	442	151,491	184	326	79,984	111	116	71,507
Schenectady	1,299	2,668	799,619	810	1,962	457,718	489	706	341,901
Schoharie	141	267	75,620	81	191	43,854	60	76	31,766
Schuyler	192	388	89,216	107	284	53,707	85	104	35,509
Seneca	192	340	91,484	108	230	49,719	84	110	41,765
Steuben	1,184	2,397	564,702	634	1,643	334,478	550	754	230,224
Suffolk	7,768	14,633	7,704,967	3,515	8,698	4,511,299	4,253	5,935	3,193,668
Sullivan	741	1,514	429,993	465	1,176	276,819	276	338	153,174
Tioga	396	800	196,816	258	614	132,313	138	186	64,503
Tompkins	855	1,586	483,660	467	1,105	270,632	388	481	213,028
Ulster	1,266	2,375	715,819	813	1,773	465,208	453	602	250,611
Warren	269	477	168,244	138	329	75,005	131	148	93,239
Washington	368	636	228,287	198	435	114,502	170	201	113,785
Wayne	581	1,021	275,754	278	657	133,944	303	364	141,810
Westchester	8,579	17,545	8,672,122	4,193	9,721	4,335,971	4,386	7,824	4,336,151
Wyoming	165	270	72,458	88	181	39,104	77	89	33,354
Yates	154	301	78,093	92	236	44,751	62	65	33,342

\* Expenditures partially estimated.

Table 9  
 TEMPORARY ASSISTANCE TO NEEDY FAMILIES (TANF) BY PROGRAM  
 Cases, Recipients, Children, Adults and Expenditures by Local District  
 March 2004

Local District	Family Assistance					Safety Net Assistance-FP				
	Cases	Recipients	Children	Adults	Expenditures	Cases	Recipients	Children	Adults	Expenditures
New York State	139,703	325,862	234,544	91,318	\$82,943,300	1,825	4,581	2,655	1,926	\$1,273,181
New York City*	89,357	203,087	145,983	57,104	50,216,000	216	450	244	206	80,000
Rest of State	50,346	122,775	88,561	34,214	32,727,300	1,609	4,131	2,411	1,720	1,193,181
Albany	2,030	5,137	3,587	1,550	1,299,909	49	124	70	54	33,992
Allegany	340	856	574	282	162,520	2	7	4	3	411
Broome	1,442	3,570	2,437	1,133	784,881	28	84	51	33	12,183
Cattaraugus	371	896	648	248	173,966	9	23	12	11	4,492
Cayuga	321	751	549	202	166,304	8	26	16	10	3,939
Chautauqua	1,189	3,014	2,156	858	649,328	23	57	38	19	11,915
Chemung	907	2,321	1,564	757	435,565	14	33	16	17	6,073
Chenango	233	596	414	182	112,046	2	6	4	2	1,386
Clinton	450	1,015	682	333	223,754	6	16	8	8	3,336
Columbia	207	485	353	132	103,320	1	1	0	1	454
Cortland	273	709	480	229	152,022	8	22	12	10	4,683
Delaware	100	227	171	56	50,541	0	0	0	0	0
Dutchess	774	1,711	1,282	429	593,793	21	52	30	22	38,760
Erie	6,312	15,206	11,190	4,016	3,318,790	268	680	383	297	145,505
Essex	116	302	203	99	41,056	3	11	5	6	791
Franklin	201	453	316	137	96,541	2	4	2	2	253
Fulton	224	520	369	151	109,258	4	11	6	5	3,838
Genesee	197	495	355	140	103,649	6	16	9	7	4,100
Greene	248	629	427	202	124,331	6	18	10	8	2,024
Hamilton	7	18	10	8	3,758	0	0	0	0	0
Herkimer	226	541	387	154	111,887	4	10	6	4	1,857
Jefferson	492	1,231	869	362	249,048	22	49	26	23	11,135
Lewis	81	216	149	67	40,179	0	0	0	0	0
Livingston	324	864	561	303	173,416	20	51	26	25	14,093
Madison	105	200	167	33	45,187	6	12	6	6	3,530
Monroe	6,751	16,776	12,225	4,551	3,575,060	547	1,403	849	554	319,557
Montgomery	248	660	454	206	152,450	7	19	10	9	4,237
Nassau	2,586	5,848	4,329	1,519	2,213,143	26	70	44	26	12,820
Niagara	1,301	3,111	2,166	945	636,680	41	100	59	41	21,719
Oneida	1,580	4,251	3,071	1,180	966,883	41	105	58	47	36,704
Onondaga	3,761	9,439	6,779	2,660	2,010,598	27	73	41	32	13,231
Ontario	387	928	614	314	193,607	14	44	27	17	7,664
Orange	1,363	3,536	2,675	861	955,611	19	51	32	19	18,487
Orleans	231	614	443	171	127,331	10	18	9	9	6,105
Oswego	547	1,323	981	342	295,433	11	36	23	13	6,658
Otsego	78	152	126	26	47,040	4	10	7	3	3,751
Putnam	57	132	100	32	42,205	6	10	4	6	7,412
Rensselaer	932	2,361	1,586	775	467,351	29	66	38	28	11,095
Rockland	561	1,283	1,021	262	358,918	8	20	12	8	3,846
St.Lawrence	668	1,622	1,100	522	351,144	3	8	4	4	934
Saratoga	180	317	279	38	78,701	4	9	5	4	1,283
Schenectady	804	1,953	1,510	443	452,948	6	9	3	6	4,770
Schoharie	81	191	141	50	43,854	0	0	0	0	0
Schuyler	107	284	176	108	53,707	0	0	0	0	0
Seneca	103	220	161	59	48,510	5	10	5	5	1,209
Steuben	632	1,641	1,097	544	333,079	2	2	1	1	1,399
Suffolk	3,423	8,464	6,307	2,157	4,372,734	92	234	136	98	138,565
Sullivan	456	1,146	839	307	271,451	9	30	21	9	5,368
Tioga	255	602	426	176	130,510	3	12	8	4	1,803
Tompkins	446	1,050	689	361	248,892	21	55	30	25	21,740
Ulster	791	1,718	1,297	421	450,337	22	55	34	21	14,871
Warren	133	312	227	85	72,616	5	17	12	5	2,389
Washington	195	426	315	111	113,337	3	9	6	3	1,165
Wayne	267	629	462	167	128,405	11	28	17	11	5,539
Westchester	4,073	9,410	6,781	2,629	4,126,811	120	311	173	138	209,160
Wyoming	88	181	130	51	39,104	0	0	0	0	0
Yates	91	232	154	78	43,801	1	4	3	1	950

\* Expenditures partially estimated.

Table 10  
SAFETY NET ASSISTANCE-FNP  
Cases, Recipients, Children, Adults and Expenditures by Local District  
March 2004

Local District	Safety Net Assistance-FNP				
	Cases	Recipients	Children	Adults	Expenditures
New York State	169,407	302,330	127,963	174,367	\$80,267,633
New York City*	125,953	233,301	102,889	130,412	55,167,000
Rest of State	43,454	69,029	25,074	43,955	25,100,633
Albany	1,386	2,491	1,085	1,406	952,651
Allegany	226	328	99	229	80,007
Broome	1,155	1,752	570	1,182	593,650
Cattaraugus	248	319	73	246	107,942
Cayuga	152	219	65	154	80,799
Chautauqua	818	1,266	462	804	355,483
Chemung	557	810	233	577	227,608
Chenango	139	183	40	143	59,631
Clinton	373	435	61	374	180,486
Columbia	150	171	25	146	68,747
Cortland	176	255	67	188	89,951
Delaware	90	99	11	88	44,858
Dutchess	540	701	195	506	437,223
Erie	5,664	9,360	3,606	5,754	2,565,752
Essex	92	112	22	90	26,213
Franklin	137	183	44	139	51,743
Fulton	142	150	10	140	69,873
Genesee	171	210	38	172	75,856
Greene	185	241	53	188	85,088
Hamilton	10	13	3	10	4,869
Herkimer	131	145	15	130	74,541
Jefferson	427	587	142	445	181,710
Lewis	56	71	12	59	20,488
Livingston	289	354	57	297	138,515
Madison	52	57	11	46	25,888
Monroe	7,505	13,566	5,994	7,572	3,565,405
Montgomery	178	223	45	178	101,670
Nassau	2,107	3,058	952	2,106	1,328,199
Niagara	1,076	1,693	610	1,083	464,638
Oneida	950	1,606	631	975	477,393
Onondaga	2,879	4,672	1,797	2,875	1,309,772
Ontario	369	463	96	367	161,223
Orange	967	1,870	861	1,009	574,009
Orleans	209	290	76	214	82,496
Oswego	296	389	99	290	173,185
Otsego	85	91	8	83	67,225
Putnam	67	73	5	68	32,699
Rensselaer	375	451	69	382	218,219
Rockland	560	1,301	665	636	369,908
St.Lawrence	449	672	211	461	195,683
Saratoga	111	116	14	102	71,507
Schenectady	489	706	232	474	341,901
Schoharie	60	76	10	66	31,766
Schuyler	85	104	14	90	35,509
Seneca	84	110	30	80	41,765
Steuben	550	754	193	561	230,224
Suffolk	4,253	5,935	1,669	4,266	3,193,668
Sullivan	276	338	68	270	153,174
Tioga	138	186	48	138	64,503
Tompkins	388	481	87	394	213,028
Ulster	453	602	172	430	250,611
Warren	131	148	14	134	93,239
Washington	170	201	38	163	113,785
Wayne	303	364	71	293	141,810
Westchester	4,386	7,824	3,277	4,547	4,336,151
Wyoming	77	89	17	72	33,354
Yates	62	65	2	63	33,342

\* Expenditures partially estimated.

Table 11  
**SAFETY NET ASSISTANCE-FNP BY CASE CATEGORY**  
(Maintenance of Effort (MOE) vs. Non-Maintenance of Effort (Non-MOE))  
Cases, Recipients, Children, Adults and Expenditures by Local District  
March 2004

Local District	Maintenance of Effort (MOE)					Non-Maintenance of Effort (Non-MOE)				
	Cases	Recipients	Children	Adults	Expenditures	Cases	Recipients	Children	Adults	Expenditures
New York State	50,179	164,068	114,798	49,270	\$28,989,949	119,228	138,262	13,165	125,097	\$51,277,684
New York City*	42,072	132,636	92,189	40,447	22,272,000	83,881	100,665	10,700	89,965	32,895,000
Rest of State	8,107	31,432	22,609	8,823	6,717,949	35,347	37,597	2,465	35,132	18,382,684
Albany	346	1,392	1,024	368	287,161	1,040	1,099	61	1,038	665,490
Allegany	34	120	81	39	16,401	192	208	18	190	63,606
Broome	186	720	510	210	127,550	969	1,032	60	972	466,100
Cattaraugus	21	83	58	25	11,804	227	236	15	221	96,138
Cayuga	20	85	62	23	17,252	132	134	3	131	63,547
Chautauqua	156	563	421	142	96,979	662	703	41	662	258,504
Chemung	68	289	207	82	35,888	489	521	26	495	191,720
Chenango	13	52	36	16	6,502	126	131	4	127	53,129
Clinton	18	60	41	19	11,196	355	375	20	355	169,290
Columbia	10	25	14	11	4,199	140	146	11	135	64,548
Cortland	25	87	57	30	16,580	151	168	10	158	73,371
Delaware	2	8	6	2	1,003	88	91	5	86	43,855
Dutchess	46	169	127	42	43,908	494	532	68	464	393,315
Erie	1,214	4,593	3,290	1,303	758,618	4,450	4,767	316	4,451	1,807,134
Essex	5	19	13	6	2,063	87	93	9	84	24,150
Franklin	18	59	40	19	10,474	119	124	4	120	41,269
Fulton	1	2	1	1	563	141	148	9	139	69,310
Genesee	12	49	36	13	7,194	159	161	2	159	68,662
Greene	13	52	39	13	7,568	172	189	14	175	77,520
Hamilton	1	4	3	1	430	9	9	0	9	4,439
Herkimer	4	14	10	4	1,742	127	131	5	126	72,799
Jefferson	52	204	135	69	29,724	375	383	7	376	151,986
Lewis	5	13	8	5	2,096	51	58	4	54	18,392
Livingston	20	65	43	22	10,493	269	289	14	275	128,022
Madison	2	6	4	2	592	50	51	7	44	25,296
Monroe	1,979	7,737	5,660	2,077	1,124,990	5,526	5,829	334	5,495	2,440,415
Montgomery	12	54	43	11	6,491	166	169	2	167	95,179
Nassau	333	1,144	803	341	355,791	1,774	1,914	149	1,765	972,408
Niagara	203	781	559	222	124,644	873	912	51	861	339,994
Oneida	191	780	569	211	132,435	759	826	62	764	344,958
Onondaga	534	2,167	1,582	585	385,469	2,345	2,505	215	2,290	924,303
Ontario	26	100	69	31	14,810	343	363	27	336	146,413
Orange	211	1,066	790	276	166,216	756	804	71	733	407,793
Orleans	22	88	63	25	10,926	187	202	13	189	71,570
Oswego	22	100	81	19	20,114	274	289	18	271	153,071
Otsego	2	7	6	1	7,509	83	84	2	82	59,716
Putnam	1	3	2	1	291	66	70	3	67	32,408
Rensselaer	23	90	66	24	11,150	352	361	3	358	207,069
Rockland	128	815	611	204	100,716	432	486	54	432	269,192
St. Lawrence	69	268	193	75	51,603	380	404	18	386	144,080
Saratoga	1	2	2	0	523	110	114	12	102	70,984
Schenectady	66	268	197	71	48,665	423	438	35	403	293,236
Schoharie	2	10	7	3	3,675	58	66	3	63	28,091
Schuyler	5	17	10	7	2,672	80	87	4	83	32,837
Seneca	6	30	23	7	3,728	78	80	7	73	38,037
Steuben	60	215	153	62	38,534	490	539	40	499	191,690
Suffolk	540	2,044	1,456	588	1,083,777	3,713	3,891	213	3,678	2,109,891
Sullivan	18	66	47	19	11,743	258	272	21	251	141,431
Tioga	16	56	39	17	10,708	122	130	9	121	53,795
Tompkins	27	96	68	28	16,008	361	385	19	366	197,020
Ulster	46	172	124	48	41,635	407	430	48	382	208,976
Warren	4	18	13	5	2,428	127	130	1	129	90,811
Washington	9	30	22	8	5,459	161	171	16	155	108,326
Wayne	18	68	47	21	10,327	285	296	24	272	131,483
Westchester	1,235	4,389	3,025	1,364	1,413,694	3,151	3,435	252	3,183	2,922,457
Wyoming	6	18	13	5	3,238	71	71	4	67	30,116
Yates	0	0	0	0	0	62	65	2	63	33,342

Table 12  
**SAFETY NET ASSISTANCE-FNP-CASH TOTAL**  
Cases, Recipients, Children, Adults and Expenditures by Local District  
March 2004

Local District	Safety Net Assistance-FNP-Cash Total				
	Cases	Recipients	Children	Adults	Expenditures
New York State	See Note	See Note	See Note	See Note	See Note
New York City	See Note	See Note	See Note	See Note	See Note
Rest of State	23,962	26,609	2,788	23,821	\$11,720,989
Albany	671	735	68	667	399,457
Allegany	167	175	12	163	51,720
Broome	704	764	61	703	313,174
Cattaraugus	189	222	37	185	86,460
Cayuga	108	113	6	107	43,913
Chautauqua	490	510	22	488	187,410
Chemung	382	413	25	388	139,483
Chenango	116	124	7	117	46,510
Clinton	290	315	24	291	133,362
Columbia	118	123	8	115	45,585
Cortland	124	146	14	132	56,396
Delaware	71	74	5	69	30,154
Dutchess	323	356	56	300	244,822
Erie	2,451	2,914	469	2,445	1,022,713
Essex	71	78	8	70	20,532
Franklin	102	106	4	102	32,583
Fulton	99	103	8	95	41,689
Genesee	110	112	2	110	36,226
Greene	137	148	8	140	55,343
Hamilton	9	9	0	9	4,439
Herkimer	88	91	4	87	51,086
Jefferson	267	306	31	275	99,445
Lewis	46	53	5	48	16,465
Livingston	187	201	11	190	82,160
Madison	27	30	9	21	8,213
Monroe	2,920	3,515	635	2,880	1,262,496
Montgomery	105	110	4	106	54,717
Nassau	1,322	1,402	75	1,327	655,554
Niagara	584	618	42	576	214,104
Oneida	565	658	79	579	214,798
Onondaga	2,044	2,360	320	2,040	809,537
Ontario	253	266	17	249	100,986
Orange	517	575	74	501	249,782
Orleans	139	152	11	141	50,720
Oswego	201	212	15	197	101,785
Otsego	62	64	2	62	36,982
Putnam	45	48	2	46	16,303
Rensselaer	232	240	3	237	114,388
Rockland	225	249	24	225	124,011
St.Lawrence	310	335	18	317	108,191
Saratoga	69	73	12	61	35,373
Schenectady	318	334	35	299	183,673
Schoharie	46	54	2	52	18,723
Schuyler	72	85	9	76	24,592
Seneca	56	58	5	53	24,308
Steuben	398	422	14	408	142,158
Suffolk	2,930	3,189	284	2,905	1,662,216
Sullivan	190	212	31	181	86,673
Tioga	97	99	2	97	38,528
Tompkins	247	270	20	250	137,686
Ulster	249	260	31	229	110,999
Warren	76	76	1	75	48,599
Washington	128	140	17	123	77,375
Wayne	202	207	12	195	78,503
Westchester	1,901	1,990	85	1,905	1,635,980
Wyoming	51	51	1	50	18,614
Yates	61	64	2	62	33,295

Note: A breakout of Safety Net Assistance-FNP-Cash and Safety Net Assistance-FNP-Non-Cash data is not available for New York City.

Table 13  
**SAFETY NET ASSISTANCE-FNP-CASH BY CASE CATEGORY**  
(Maintenance of Effort (MOE) vs. Non-Maintenance of Effort (Non-MOE))  
Cases, Recipients, Children, Adults and Expenditures by Local District  
March 2004

Local District	Maintenance of Effort (MOE)					Non-Maintenance of Effort (Non-MOE)				
	Cases	Recipients	Children	Adults	Expenditures	Cases	Recipients	Children	Adults	Expenditures
New York State	See Note	See Note	See Note	See Note	See Note	See Note	See Note	See Note	See Note	See Note
New York City	See Note	See Note	See Note	See Note	See Note	See Note	See Note	See Note	See Note	See Note
Rest of State	638	2,142	1,445	697	\$449,394	23,324	24,467	1,343	23,124	\$11,271,595
Albany	19	69	47	22	9,805	652	666	21	645	389,652
Allegany	2	4	2	2	837	165	171	10	161	50,883
Broome	6	20	14	6	5,103	698	744	47	697	308,071
Cattaraugus	10	35	24	11	6,323	179	187	13	174	80,137
Cayuga	2	5	3	2	1,682	106	108	3	105	42,231
Chautauqua	0	0	0	0	0	490	510	22	488	187,410
Chemung	1	5	4	1	573	381	408	21	387	138,910
Chenango	1	4	3	1	342	115	120	4	116	46,168
Clinton	5	17	11	6	3,095	285	298	13	285	130,267
Columbia	0	0	0	0	0	118	123	8	115	45,585
Cortland	4	10	5	5	1,622	120	136	9	127	54,774
Delaware	0	0	0	0	0	71	74	5	69	30,154
Dutchess	6	20	14	6	7,664	317	336	42	294	237,158
Erie	122	412	286	126	75,073	2,329	2,502	183	2,319	947,640
Essex	1	5	3	2	310	70	73	5	68	20,222
Franklin	0	0	0	0	0	102	106	4	102	32,583
Fulton	0	0	0	0	0	99	103	8	95	41,689
Genesee	0	0	0	0	0	110	112	2	110	36,226
Greene	0	0	0	0	0	137	148	8	140	55,343
Hamilton	0	0	0	0	0	9	9	0	9	4,439
Herkimer	0	0	0	0	0	88	91	4	87	51,086
Jefferson	10	44	28	16	5,769	257	262	3	259	93,676
Lewis	1	2	1	1	204	45	51	4	47	16,261
Livingston	1	1	0	1	18	186	200	11	189	82,142
Madison	1	3	2	1	304	26	27	7	20	7,909
Monroe	190	664	459	205	115,586	2,730	2,851	176	2,675	1,146,910
Montgomery	1	3	2	1	606	104	107	2	105	54,111
Nassau	22	39	19	20	10,068	1,300	1,363	56	1,307	645,486
Niagara	5	20	13	7	3,159	579	598	29	569	210,945
Oneida	16	56	39	17	6,016	549	602	40	562	208,782
Onondaga	79	296	203	93	52,364	1,965	2,064	117	1,947	757,173
Ontario	1	1	0	1	358	252	265	17	248	100,628
Orange	18	55	33	22	10,766	499	520	41	479	239,016
Orleans	0	0	0	0	0	139	152	11	141	50,720
Oswego	1	3	2	1	351	200	209	13	196	101,434
Otsego	1	2	1	1	6,650	61	62	1	61	30,332
Putnam	0	0	0	0	0	45	48	2	46	16,303
Rensselaer	0	0	0	0	0	232	240	3	237	114,388
Rockland	5	9	4	5	1,448	220	240	20	220	122,563
St.Lawrence	4	12	8	4	2,404	306	323	10	313	105,787
Saratoga	0	0	0	0	0	69	73	12	61	35,373
Schenectady	2	5	3	2	1,100	316	329	32	297	182,573
Schoharie	0	0	0	0	0	46	54	2	52	18,723
Schuyler	3	11	7	4	1,888	69	74	2	72	22,704
Seneca	0	0	0	0	0	56	58	5	53	24,308
Steuben	2	6	3	3	742	396	416	11	405	141,416
Suffolk	56	196	135	61	91,904	2,874	2,993	149	2,844	1,570,312
Sullivan	4	18	14	4	1,649	186	194	17	177	85,024
Tioga	0	0	0	0	0	97	99	2	97	38,528
Tompkins	1	3	2	1	551	246	267	18	249	137,135
Ulster	0	0	0	0	0	249	260	31	229	110,999
Warren	0	0	0	0	0	76	76	1	75	48,599
Washington	3	11	8	3	2,539	125	129	9	120	74,836
Wayne	0	0	0	0	0	202	207	12	195	78,503
Westchester	32	76	43	33	20,521	1,869	1,914	42	1,872	1,615,459
Wyoming	0	0	0	0	0	51	51	1	50	18,614
Yates	0	0	0	0	0	61	64	2	62	33,295

Note: A breakout of Safety Net Assistance-FNP-Cash and Safety Net Assistance-FNP-Non-Cash data is not available for New York City.

Table 14  
**SAFETY NET ASSISTANCE-FNP-NON-CASH TOTAL**  
Cases, Recipients, Children, Adults and Expenditures by Local District  
March 2004

Local District	Safety Net Assistance-FNP-Non-Cash Total				
	Cases	Recipients	Children	Adults	Expenditures
New York State	See Note	See Note	See Note	See Note	See Note
New York City	See Note	See Note	See Note	See Note	See Note
Rest of State	19,492	42,420	22,286	20,134	\$13,379,644
Albany	715	1,756	1,017	739	553,194
Allegany	59	153	87	66	28,287
Broome	451	988	509	479	280,476
Cattaraugus	59	97	36	61	21,482
Cayuga	44	106	59	47	36,886
Chautauqua	328	756	440	316	168,073
Chemung	175	397	208	189	88,125
Chenango	23	59	33	26	13,121
Clinton	83	120	37	83	47,124
Columbia	32	48	17	31	23,162
Cortland	52	109	53	56	33,555
Delaware	19	25	6	19	14,704
Dutchess	217	345	139	206	192,401
Erie	3,213	6,446	3,137	3,309	1,543,039
Essex	21	34	14	20	5,681
Franklin	35	77	40	37	19,160
Fulton	43	47	2	45	28,184
Genesee	61	98	36	62	39,630
Greene	48	93	45	48	29,745
Hamilton	1	4	3	1	430
Herkimer	43	54	11	43	23,455
Jefferson	160	281	111	170	82,265
Lewis	10	18	7	11	4,023
Livingston	102	153	46	107	56,355
Madison	25	27	2	25	17,675
Monroe	4,585	10,051	5,359	4,692	2,302,909
Montgomery	73	113	41	72	46,953
Nassau	785	1,656	877	779	672,645
Niagara	492	1,075	568	507	250,534
Oneida	385	948	552	396	262,595
Onondaga	835	2,312	1,477	835	500,235
Ontario	116	197	79	118	60,237
Orange	450	1,295	787	508	324,227
Orleans	70	138	65	73	31,776
Oswego	95	177	84	93	71,400
Otsego	23	27	6	21	30,243
Putnam	22	25	3	22	16,396
Rensselaer	143	211	66	145	103,831
Rockland	335	1,052	641	411	245,897
St.Lawrence	139	337	193	144	87,492
Saratoga	42	43	2	41	36,134
Schenectady	171	372	197	175	158,228
Schoharie	14	22	8	14	13,043
Schuyler	13	19	5	14	10,917
Seneca	28	52	25	27	17,457
Steuben	152	332	179	153	88,066
Suffolk	1,323	2,746	1,385	1,361	1,531,452
Sullivan	86	126	37	89	66,501
Tioga	41	87	46	41	25,975
Tompkins	141	211	67	144	75,342
Ulster	204	342	141	201	139,612
Warren	55	72	13	59	44,640
Washington	42	61	21	40	36,410
Wayne	101	157	59	98	63,307
Westchester	2,485	5,834	3,192	2,642	2,700,171
Wyoming	26	38	16	22	14,740
Yates	1	1	0	1	47

Note: A breakout of Safety Net Assistance-FNP-Cash and Safety Net Assistance-FNP-Non-Cash data is not available for New York City.

Table 15  
**SAFETY NET ASSISTANCE-FNP-NON-CASH BY CASE CATEGORY**  
(Maintenance of Effort (MOE) vs. Non-Maintenance of Effort (Non-MOE))  
Cases, Recipients, Children, Adults and Expenditures by Local District  
March 2004

Local District	Maintenance of Effort (MOE)					Non-Maintenance of Effort (Non-MOE)				
	Cases	Recipients	Children	Adults	Expenditures	Cases	Recipients	Children	Adults	Expenditures
New York State	See Note	See Note	See Note	See Note	See Note	See Note	See Note	See Note	See Note	See Note
New York City	See Note	See Note	See Note	See Note	See Note	See Note	See Note	See Note	See Note	See Note
Rest of State	7,469	29,290	21,164	8,126	\$6,268,555	12,023	13,130	1,122	12,008	\$7,111,089
Albany	327	1,323	977	346	277,356	388	433	40	393	275,838
Allegany	32	116	79	37	15,564	27	37	8	29	12,723
Broome	180	700	496	204	122,447	271	288	13	275	158,029
Cattaraugus	11	48	34	14	5,481	48	49	2	47	16,001
Cayuga	18	80	59	21	15,570	26	26	0	26	21,316
Chautauqua	156	563	421	142	96,979	172	193	19	174	71,094
Chemung	67	284	203	81	35,315	108	113	5	108	52,810
Chenango	12	48	33	15	6,160	11	11	0	11	6,961
Clinton	13	43	30	13	8,101	70	77	7	70	39,023
Columbia	10	25	14	11	4,199	22	23	3	20	18,963
Cortland	21	77	52	25	14,958	31	32	1	31	18,597
Delaware	2	8	6	2	1,003	17	17	0	17	13,701
Dutchess	40	149	113	36	36,244	177	196	26	170	156,157
Erie	1,092	4,181	3,004	1,177	683,545	2,121	2,265	133	2,132	859,494
Essex	4	14	10	4	1,753	17	20	4	16	3,928
Franklin	18	59	40	19	10,474	17	18	0	18	8,686
Fulton	1	2	1	1	563	42	45	1	44	27,621
Genesee	12	49	36	13	7,194	49	49	0	49	32,436
Greene	13	52	39	13	7,568	35	41	6	35	22,177
Hamilton	1	4	3	1	430	0	0	0	0	0
Herkimer	4	14	10	4	1,742	39	40	1	39	21,713
Jefferson	42	160	107	53	23,955	118	121	4	117	58,310
Lewis	4	11	7	4	1,892	6	7	0	7	2,131
Livingston	19	64	43	21	10,475	83	89	3	86	45,880
Madison	1	3	2	1	288	24	24	0	24	17,387
Monroe	1,789	7,073	5,201	1,872	1,009,404	2,796	2,978	158	2,820	1,293,505
Montgomery	11	51	41	10	5,885	62	62	0	62	41,068
Nassau	311	1,105	784	321	345,723	474	551	93	458	326,922
Niagara	198	761	546	215	121,485	294	314	22	292	129,049
Oneida	175	724	530	194	126,419	210	224	22	202	136,176
Onondaga	455	1,871	1,379	492	333,105	380	441	98	343	167,130
Ontario	25	99	69	30	14,452	91	98	10	88	45,785
Orange	193	1,011	757	254	155,450	257	284	30	254	168,777
Orleans	22	88	63	25	10,926	48	50	2	48	20,850
Oswego	21	97	79	18	19,763	74	80	5	75	51,637
Otsego	1	5	5	0	859	22	22	1	21	29,384
Putnam	1	3	2	1	291	21	22	1	21	16,105
Rensselaer	23	90	66	24	11,150	120	121	0	121	92,681
Rockland	123	806	607	199	99,268	212	246	34	212	146,629
St.Lawrence	65	256	185	71	49,199	74	81	8	73	38,293
Saratoga	1	2	2	0	523	41	41	0	41	35,611
Schenectady	64	263	194	69	47,565	107	109	3	106	110,663
Schoharie	2	10	7	3	3,675	12	12	1	11	9,368
Schuyler	2	6	3	3	784	11	13	2	11	10,133
Seneca	6	30	23	7	3,728	22	22	2	20	13,729
Steuben	58	209	150	59	37,792	94	123	29	94	50,274
Suffolk	484	1,848	1,321	527	991,873	839	898	64	834	539,579
Sullivan	14	48	33	15	10,094	72	78	4	74	56,407
Tioga	16	56	39	17	10,708	25	31	7	24	15,267
Tompkins	26	93	66	27	15,457	115	118	1	117	59,885
Ulster	46	172	124	48	41,635	158	170	17	153	97,977
Warren	4	18	13	5	2,428	51	54	0	54	42,212
Washington	6	19	14	5	2,920	36	42	7	35	33,490
Wayne	18	68	47	21	10,327	83	89	12	77	52,980
Westchester	1,203	4,313	2,982	1,331	1,393,173	1,282	1,521	210	1,311	1,306,998
Wyoming	6	18	13	5	3,238	20	20	3	17	11,502
Yates	0	0	0	0	0	1	1	0	1	47

Note: A breakout of Safety Net Assistance-FNP-Cash and Safety Net Assistance-FNP-Non-Cash data is not available for New York City.



Table 16  
**FOOD STAMPS**  
Households, Persons and Value of Food Stamps Benefits by Local District  
March 2004

Local District	Total			Temporary Assistance			Non-Temporary Assistance		
	Households	Persons	Food Stamps Benefits	Households	Persons	Food Stamps Benefits	Households	Persons	Food Stamps Benefits
New York State	799,544	1,603,591	\$158,667,354	544,547	980,512	\$106,002,392	254,997	623,079	\$52,664,962
New York City	502,049	978,406	103,939,988	409,251	762,672	84,727,799	92,798	215,734	19,212,189
Rest of State	297,495	625,185	54,727,366	135,296	217,840	21,274,593	162,199	407,345	33,452,773
Albany	9,136	19,053	1,655,239	4,820	8,415	805,590	4,316	10,638	849,649
Allegany	2,198	4,580	368,388	981	1,493	139,261	1,217	3,087	229,127
Broome	7,451	15,174	1,346,911	3,647	5,984	613,088	3,804	9,190	733,823
Cattaraugus	3,316	6,864	528,787	1,233	1,720	154,702	2,083	5,144	374,085
Cayuga	2,468	5,418	453,199	853	1,264	115,234	1,615	4,154	337,965
Chautauqua	6,502	14,213	1,216,707	2,820	4,650	464,663	3,682	9,563	752,044
Chemung	4,022	8,974	770,583	1,910	3,273	323,637	2,112	5,701	446,946
Chenango	2,098	4,738	384,940	610	942	89,761	1,488	3,796	295,179
Clinton	3,586	6,794	581,994	1,592	2,110	206,257	1,994	4,684	375,737
Columbia	1,594	2,998	257,801	674	936	94,060	920	2,062	163,741
Cortland	1,824	3,811	311,354	763	1,145	105,655	1,061	2,666	205,699
Delaware	1,461	2,641	211,725	588	712	66,691	873	1,929	145,034
Dutchess	4,352	8,293	732,020	1,847	2,711	274,659	2,505	5,582	457,361
Erie	41,326	85,118	7,597,055	18,489	29,025	2,924,004	22,837	56,093	4,673,051
Essex	1,221	2,292	170,315	550	749	57,200	671	1,543	113,115
Franklin	1,945	3,956	322,797	721	956	82,191	1,224	3,000	240,606
Fulton	2,320	4,987	428,203	790	1,034	95,060	1,530	3,953	333,143
Genesee	1,615	3,455	291,013	582	815	79,727	1,033	2,640	211,286
Greene	1,543	3,092	272,252	664	996	99,302	879	2,096	172,950
Hamilton	183	276	15,671	31	42	3,416	152	234	12,255
Herkimer	2,523	5,472	460,004	768	1,015	93,116	1,755	4,457	366,888
Jefferson	4,248	9,334	764,969	1,626	2,388	211,241	2,622	6,946	553,728
Lewis	1,013	2,241	176,677	306	429	36,498	707	1,812	140,179
Livingston	1,953	3,992	350,601	804	1,359	137,663	1,149	2,633	212,938
Madison	1,925	4,151	352,245	579	655	56,564	1,346	3,496	295,681
Monroe	33,688	71,349	6,274,692	17,558	31,991	3,093,438	16,130	39,358	3,181,254
Montgomery	2,383	5,379	465,593	838	1,248	119,299	1,545	4,131	346,294
Nassau	11,300	20,129	1,955,799	6,534	10,085	1,064,276	4,766	10,044	891,523
Niagara	7,752	15,833	1,416,136	3,506	5,681	558,777	4,246	10,152	857,359
Oneida	10,828	23,331	1,977,569	4,212	6,504	621,812	6,616	16,827	1,355,757
Onondaga	17,219	38,469	3,447,408	7,783	13,740	1,386,258	9,436	24,729	2,061,150
Ontario	2,719	5,313	450,058	1,169	1,780	172,317	1,550	3,533	277,741
Orange	7,903	20,324	1,887,879	3,085	5,520	561,104	4,818	14,804	1,326,775
Orleans	1,587	3,554	302,534	620	1,003	102,149	967	2,551	200,385
Oswego	4,481	10,914	913,163	1,406	2,082	194,781	3,075	8,832	718,382
Otsego	1,565	3,156	254,659	473	552	47,191	1,092	2,604	207,468
Putnam	600	835	62,134	325	373	29,434	275	462	32,700
Rensselaer	4,532	9,641	875,497	1,903	3,158	319,352	2,629	6,483	556,145
Rockland	5,493	17,362	1,513,785	1,897	3,281	266,918	3,596	14,081	1,246,867
St. Lawrence	4,372	9,638	793,397	1,833	2,796	267,232	2,539	6,842	526,165
Saratoga	3,544	7,035	584,491	1,005	1,108	99,285	2,539	5,927	485,206
Schenectady	5,420	11,850	1,041,433	2,151	3,282	321,670	3,269	8,568	719,763
Schoharie	927	1,922	155,771	298	380	34,126	629	1,542	121,645
Schuyler	638	1,357	113,605	273	449	44,056	365	908	69,549
Seneca	1,019	2,039	169,014	323	427	38,721	696	1,612	130,293
Steuben	3,788	8,427	707,139	1,621	2,640	256,510	2,167	5,787	450,629
Suffolk	17,303	31,494	2,898,373	10,175	15,723	1,542,240	7,128	15,771	1,356,133
Sullivan	2,632	5,390	437,116	1,209	1,801	162,222	1,423	3,589	274,894
Tioga	1,528	3,459	294,194	579	908	89,807	949	2,551	204,387
Tompkins	2,416	4,819	412,675	1,109	1,717	159,862	1,307	3,102	252,813
Ulster	3,927	7,608	616,296	1,893	2,772	252,072	2,034	4,836	364,224
Warren	1,922	3,654	303,628	790	1,032	92,197	1,132	2,622	211,431
Washington	1,958	4,093	346,499	698	936	89,721	1,260	3,157	256,778
Wayne	2,896	5,631	462,002	1,159	1,510	146,222	1,737	4,121	315,780
Westchester	17,435	35,423	3,248,205	10,010	17,715	1,730,945	7,425	17,708	1,517,260
Wyoming	914	1,881	160,752	310	408	39,683	604	1,473	121,069
Yates	983	1,959	164,420	303	420	41,676	680	1,539	122,744

Note: Food Stamps households containing only SSI recipients are counted as TA in accordance with Federal reporting requirements.

Table 17  
**SUPPLEMENTAL SECURITY INCOME**  
 Recipients, Total Program Expenditures, Federal and State Shares, by Local District  
 March 2004

Local District	Expenditures			
	Recipients	Total	Federal	State
New York State*	628,853	\$303,104,083	\$254,964,045	\$48,140,038
New York City	397,889	197,096,791	169,109,485	27,987,306
Rest of State	221,783	102,741,862	83,724,705	19,017,157
Albany	6,302	2,949,588	2,383,687	565,901
Allegany	1,452	667,845	544,850	122,995
Broome	5,254	2,421,895	2,017,035	404,860
Cattaraugus	2,341	1,089,147	903,278	185,869
Cayuga	1,769	789,215	630,315	158,900
Chautauqua	3,989	1,922,271	1,602,152	320,119
Chemung	2,826	1,278,053	1,064,424	213,629
Chenango	1,348	613,786	527,044	86,742
Clinton	2,568	1,147,429	946,375	201,054
Columbia	1,482	649,301	513,390	135,911
Cortland	1,178	508,991	419,114	89,877
Delaware	1,224	527,198	430,585	96,613
Dutchess	4,424	2,055,065	1,577,146	477,919
Erie	25,257	12,092,967	10,053,830	2,039,137
Essex	941	417,451	308,991	108,460
Franklin	1,585	699,250	561,144	138,106
Fulton	1,701	739,440	585,952	153,488
Genesee	1,035	428,488	338,219	90,269
Greene	1,142	508,285	417,256	91,029
Hamilton	66	25,494	20,938	4,556
Herkimer	1,511	618,656	499,535	119,121
Jefferson	2,876	1,339,255	1,104,715	234,540
Lewis	627	272,794	223,927	48,867
Livingston	934	409,281	344,594	64,687
Madison	1,226	505,931	400,708	105,223
Monroe	18,636	9,335,225	7,778,758	1,556,467
Montgomery	1,372	589,422	488,067	101,355
Nassau	16,600	7,538,893	5,957,459	1,581,434
Niagara	4,908	2,277,153	1,867,629	409,524
Oneida	7,285	3,414,749	2,855,386	559,363
Onondaga	11,670	5,694,009	4,821,812	872,197
Ontario	1,584	715,271	581,932	133,339
Orange	5,892	2,680,533	2,197,745	482,788
Orleans	921	377,957	310,568	67,389
Oswego	2,926	1,448,860	1,244,095	204,765
Otsego	1,313	593,504	468,951	124,553
Putnam	789	374,343	268,995	105,348
Rensselaer	3,174	1,436,961	1,156,491	280,470
Rockland	4,281	1,942,043	1,435,678	506,365
St. Lawrence	3,666	1,645,762	1,389,658	256,104
Saratoga	2,530	1,134,294	922,394	211,900
Schenectady	3,991	1,824,074	1,500,662	323,412
Schoharie	677	295,864	226,083	69,781
Schuyler	408	174,027	139,277	34,750
Seneca	666	272,402	219,765	52,637
Steuben	2,878	1,331,064	1,121,872	209,192
Suffolk	20,517	9,455,834	7,412,352	2,043,482
Sullivan	2,532	1,128,483	844,319	284,164
Tioga	1,013	474,914	407,316	67,598
Tompkins	1,546	688,274	548,520	139,754
Ulster	3,988	1,776,945	1,433,536	343,409
Warren	1,480	596,442	487,472	108,970
Washington	1,439	609,039	490,107	118,932
Wayne	1,819	799,544	658,257	141,287
Westchester	15,151	6,944,687	5,666,369	1,278,318
Wyoming	598	251,945	207,193	44,752
Yates	475	242,269	196,783	45,486
Mental Hygiene	9,181	3,265,430	2,129,855	1,135,575

\* Only NYS includes Mental Hygiene

Table 18  
**SUPPLEMENTAL SECURITY INCOME**  
 SSI Recipients by Living Arrangement and Location  
 March 2004

Living Arrangement	New York State	New York City	Rest of State	Mental Hygiene
Living Alone	327,599	224,440	103,147	12
Living With Others	214,446	133,158	81,278	10
Living in Household of Another	23,121	14,561	8,554	6
Congregate Care Level I	5,068	550	395	4,123
Congregate Care Level II	36,786	14,101	21,995	690
Congregate Care Level III	135	25	110	0
Title XIX Institution	21,698	11,054	6,304	4,340
<b>Total</b>	<b>628,853</b>	<b>397,889</b>	<b>221,783</b>	<b>9,181</b>

Table 19  
**SUPPLEMENTAL SECURITY INCOME**  
 SSI Recipients by Living Arrangement and Category of Assistance  
 March 2004

Living Arrangement	Total	Category of Assistance		
		Aged	Blind	Disabled
Living Alone	327,599	99,983	1,613	226,003
Living With Others	214,446	17,250	1,037	196,159
Living in Household of Another	23,121	9,088	148	13,885
Congregate Care Level I	5,068	214	24	4,830
Congregate Care Level II	36,786	4,264	192	32,330
Congregate Care Level III	135	1	0	134
Title XIX Institution	21,698	3,429	129	18,140
<b>Total</b>	<b>628,853</b>	<b>134,229</b>	<b>3,143</b>	<b>491,481</b>

Table 20  
CHILD SUPPORT COLLECTIONS (IV-D)  
March 2004

Local District	Total	Current Assistance	Former Assistance	Never Assistance
New York State	\$114,466,515	\$7,616,312	\$41,073,602	\$65,776,601
New York City	42,198,842	3,753,963	16,978,156	21,466,723
Rest of State	72,267,673	3,862,349	24,095,446	44,309,878
Albany	2,028,713	95,172	541,758	1,391,783
Allegany	463,720	28,395	242,009	193,316
Broome	1,304,454	81,034	481,679	741,741
Cattaraugus	798,695	58,732	376,674	363,289
Cayuga	676,638	30,742	217,200	428,696
Chautauqua	1,218,565	101,695	670,835	446,035
Chemung	777,619	55,302	280,054	442,263
Chenango	441,548	18,913	133,579	289,056
Clinton	663,259	33,294	274,838	355,127
Columbia	444,755	18,721	139,107	286,927
Cortland	390,289	23,468	139,295	227,526
Delaware	358,197	10,643	104,244	243,310
Dutchess	2,059,680	98,366	508,348	1,452,966
Erie	5,121,546	336,909	2,622,854	2,161,783
Essex	302,283	11,903	167,877	122,503
Franklin	441,154	12,740	184,181	244,233
Fulton	528,179	11,475	175,918	340,786
Genesee	446,031	16,870	139,753	289,408
Greene	391,808	20,650	140,728	230,430
Hamilton	36,868	1,288	14,871	20,709
Herkimer	556,251	25,830	240,546	289,875
Jefferson	992,148	49,259	375,705	567,184
Lewis	228,143	5,931	73,696	148,516
Livingston	514,276	30,027	150,114	334,135
Madison	430,498	12,081	162,065	256,352
Monroe	4,983,829	388,680	2,101,152	2,493,997
Montgomery	421,051	36,456	156,410	228,185
Nassau	6,263,862	214,986	1,207,930	4,840,946
Niagara	1,546,579	102,946	813,488	630,145
Oneida	1,240,137	95,808	522,346	621,983
Onondaga	3,370,385	186,895	1,426,799	1,756,691
Ontario	863,353	35,986	284,891	542,476
Orange	2,507,140	136,582	653,445	1,717,113
Orleans	323,203	17,687	149,427	156,089
Oswego	1,138,895	51,146	564,875	522,874
Otsego	393,012	12,686	91,840	288,486
Putnam	577,524	4,362	75,500	497,662
Rensselaer	1,272,570	55,578	429,440	787,552
Rockland	1,813,264	57,965	391,860	1,363,439
St. Lawrence	903,637	56,814	439,124	407,699
Saratoga	1,401,301	17,312	240,737	1,143,252
Schenectady	1,183,826	53,562	291,304	838,960
Schoharie	297,698	11,950	103,119	182,629
Schuyler	134,677	8,234	42,618	83,825
Seneca	306,892	11,811	88,935	206,146
Steuben	744,074	53,262	337,730	353,082
Suffolk	9,258,303	500,664	2,206,716	6,550,923
Sullivan	559,237	62,507	207,593	289,137
Tioga	382,427	27,759	159,652	195,016
Tompkins	549,125	37,599	221,513	290,013
Ulster	1,155,113	46,601	294,085	814,427
Warren	657,698	16,531	190,858	450,309
Washington	587,065	24,388	179,249	383,428
Wayne	856,313	26,885	221,700	607,728
Westchester	4,462,407	300,591	1,266,792	2,895,024
Wyoming	310,118	12,136	108,225	189,757
Yates	187,641	6,540	68,165	112,936

Note: Effective February 1999, collection amounts include collections made on behalf of other states.