



**Office of Temporary
and Disability Assistance**

Temporary and Disability Assistance Statistics

November 2014



Temporary and Disability Assistance Statistics

NOVEMBER 2014

Temporary Assistance

Temporary Assistance recipients totaled 566,688 in November 2014, decreasing by 5,154 (-0.9%) from the previous month. Related expenditures totaled \$176,987,332 in November 2014, decreasing by approximately \$15.2 million (-7.9%) over October 2014.

Supplemental Nutrition Assistance Program

Supplemental Nutrition Assistance Program recipients totaled 3,057,644 in November 2014, decreasing by 11,181 (-0.4%) from the previous month. Related expenditures totaled \$430,248,769 in November 2014, decreasing by approximately \$5.1 million (-1.2%) over October 2014.

Supplemental Security Income

Supplemental Security Income recipients (including Mental Hygiene) totaled 703,156 in November 2014, decreasing by 4,153 (-0.6%) from the previous month. Related expenditures totaled \$411,145,841 in November 2014, increasing by approximately \$2.5 million (+0.6%) over October 2014.

Note: New York State's October 2014 administrative takeover of the State Supplement portion of the Supplemental Security Income (SSI) benefit precipitated systems changes that disrupted the pre-existing statistical reporting processes for the SSI program overall. This has resulted in overcounting program participants and possibly expenditures on the monthly reports from October 2014 to the present. The New York State Office of Information Technology Services is working on tracing and correcting the cause of this problem, but, until these adjustments are made, the SSI statistics contained in this report are included to fulfill statutory reporting requirements only and should not be used for trending or other purposes.

Date Issued January 29, 2015

Table of Contents

Ten Year Trend Graphs

Temporary Assistance Recipients	4
Supplemental Nutrition Assistance Program Recipients	4
Supplemental Security Income Recipients	4

Temporary Assistance, SSI and SNAP Summary

Table 1:	Temporary Assistance, Family Assistance-FP, Safety Net Assistance, Supplemental Security Income and Supplemental Nutrition Assistance Program Cases by Region	5
Table 2:	Temporary Assistance, Family Assistance-FP, Safety Net Assistance, Supplemental Security Income and Supplemental Nutrition Assistance Program Recipients by Region	5
Table 3:	Temporary Assistance, Family Assistance-FP, Safety Net Assistance, Supplemental Security Income and Supplemental Nutrition Assistance Program Expenditures by Region	5

Temporary Assistance by Program Area

Table 4:	Temporary Assistance Year to Year Monthly Comparison Cases, Recipients and Expenditures	6
Table 5:	Temporary Assistance Cases, Recipients, Children, Adults and Expenditures	7
Table 6:	Family Assistance-FP Cases, Recipients, Children, Adults and Expenditures	8
Table 7:	Safety Net Assistance Cases, Recipients, Children, Adults and Expenditures	9

Temporary Assistance by Funding Source and Program Area

Table 8:	Temporary Assistance by Funding Source (Federally Participating and Federally Non-Participating) Cases, Recipients and Expenditures	10
Table 9:	Temporary Assistance for Needy Families-FP by Program (Family Assistance-FP and Safety Net Assistance-FP) Cases, Recipients, Children, Adults and Expenditures	11
Table 10:	Safety Net Assistance-FNP and Family Assistance-FNP Cases, Recipients, Children, Adults and Expenditures	12
Table 11:	Safety Net Assistance-FNP by Maintenance of Effort Status Cases, Recipients, Children, Adults and Expenditures	13
Table 12:	Safety Net Assistance-FNP-Cash Total Cases, Recipients, Children, Adults and Expenditures	14
Table 13:	Safety Net Assistance-FNP-Cash by Maintenance of Effort Status Cases, Recipients, Children, Adults and Expenditures	15
Table 14:	Safety Net Assistance-FNP-Non-Cash Total Cases, Recipients, Children, Adults and Expenditures	16
Table 15:	Safety Net Assistance-FNP-Non-Cash by Maintenance of Effort Status Cases, Recipients, Children, Adults and Expenditures	17

Supplemental Nutrition Assistance Program

Table 16:	Supplemental Nutrition Assistance Program Households, Persons and Value of Supplemental Nutrition Assistance Program Benefits	18
------------------	---	----

Supplemental Security Income

Table 17:	Supplemental Security Income Recipients, Total Program Expenditures and Federal and State Shares	19
Table 18:	Supplemental Security Income Recipients by Living Arrangement and Location	20
Table 19:	Supplemental Security Income Recipients by Living Arrangement and Category of Assistance	20

Table of Contents

Child Support

Table 20:	Child Support Collections (IV-D)	21
------------------	----------------------------------	----

Aggregate Claims

Table 21:	Aggregate Claims - Total Temporary Assistance	22
Table 22:	Aggregate Claims - Federally Participating - TANF	23
Table 23:	Aggregate Claims - Federally Non-Participating Safety Net Assistance-FNP Maintenance of Effort	24
Table 24:	Aggregate Claims - Federally Non-Participating Safety Net Assistance-FNP and Family Assistance-FNP Maintenance of Effort	25

Home Energy Assistance Program

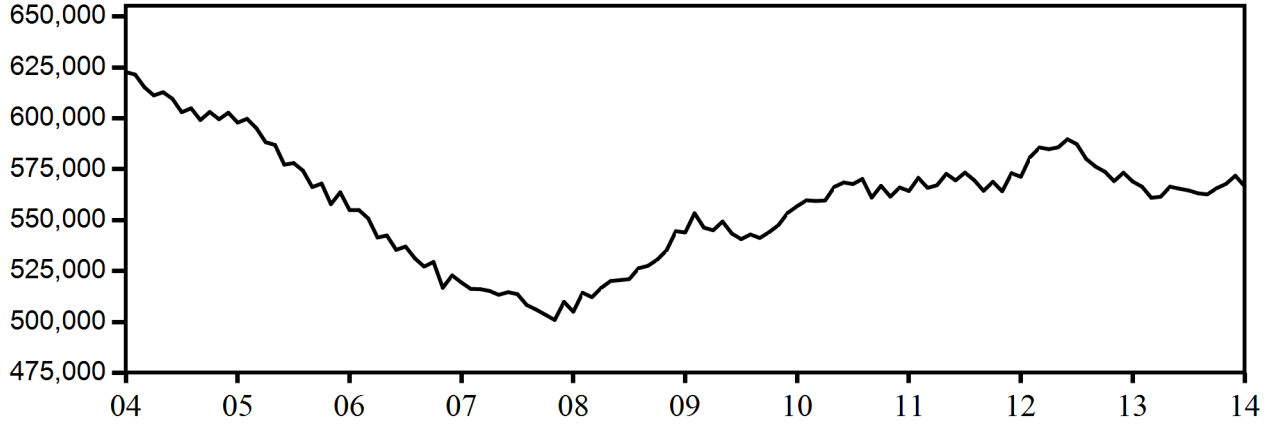
Table 25:	Home Energy Assistance Program Number and Dollar Amount of Benefits Authorized and Administrative Allocations	26
Table 26:	Home Energy Assistance Program - Non-Emergency Number, Total Dollar Amount and Average Dollar Amount of Benefits Authorized	27
Table 27:	Home Energy Assistance Program - Emergency Number, Total Dollar Amount and Average Dollar Amount of Benefits Authorized	28

Welfare to Work Statistical Tables

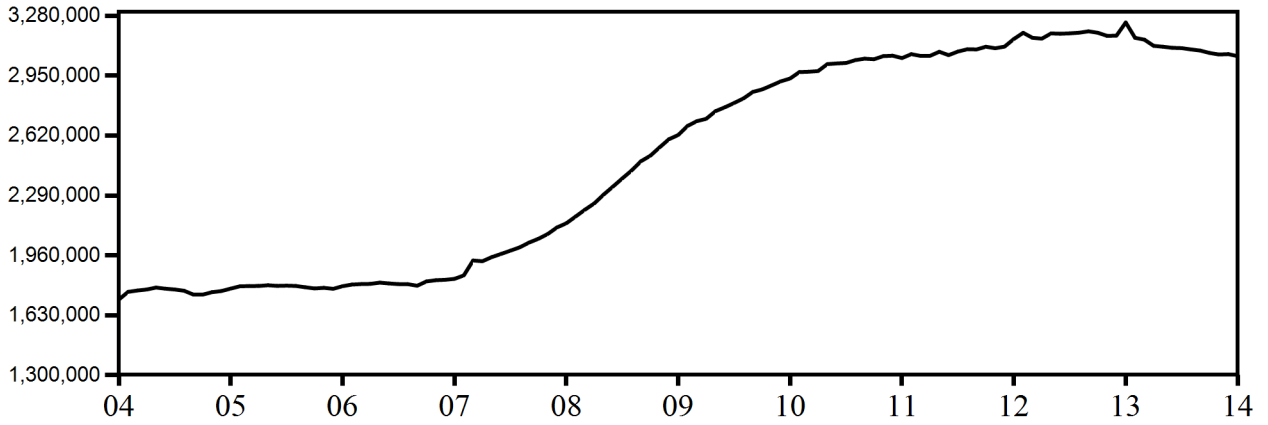
Table 28:	Federal All Families Work Participation Rates TANF, Safety Net Assistance MOE and Combined TANF and Safety Net Assistance MOE	29
Table 29:	Work Sanction Status by Presence in Federal All Families Work Participation Calculation TANF, Safety Net Assistance MOE and Combined TANF and Safety Net Assistance MOE	30
Table 30:	Temporary Assistance Cases with Earned Income Cases, Average Gross Earned Income and Average Net Earned Income after Application of Disregards	31

**NEW YORK STATE
December 2004 - November 2014
TEN YEAR TREND**

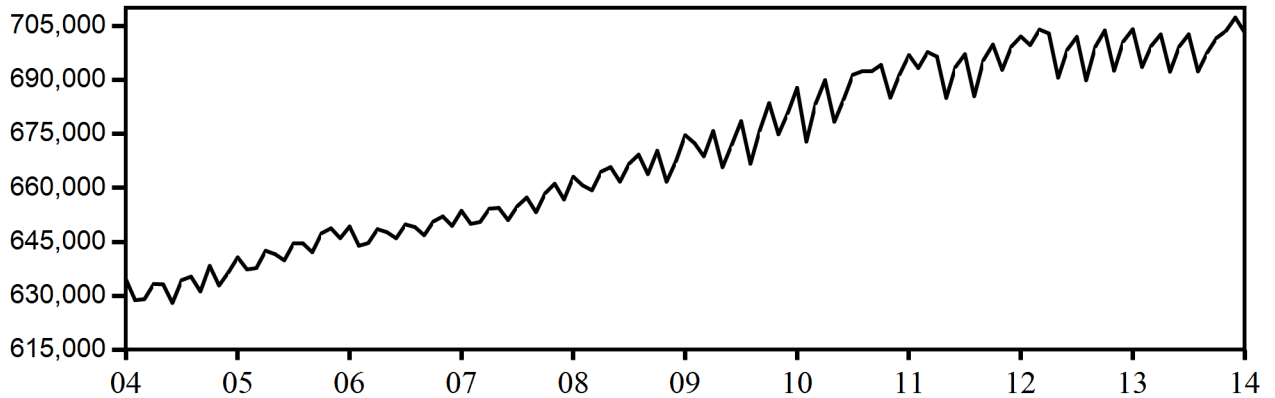
Temporary Assistance Recipients



Supplemental Nutrition Assistance Program Recipients



**Supplemental Security Income Recipients
(Including Mental Hygiene)**



SELECTED SUMMARY PROGRAM DATA
BY REGION

Table 1
TEMPORARY AND DISABILITY ASSISTANCE CASES
November 2014

Region	Cases				
	Temporary Assistance by Program			Supplemental Security Income	Supplemental Nutrition Assistance Program
	Total	Family Assistance-FP	Safety Net Assistance		
New York State	295,083	109,214	185,869	698,607	1,671,667
New York City	183,279	60,290	122,989	426,989	966,467
Rest of State	111,804	48,924	62,880	271,618	705,200

Table 2
TEMPORARY AND DISABILITY ASSISTANCE RECIPIENTS
November 2014

Region	Recipients				
	Temporary Assistance by Program			Supplemental Security Income	Supplemental Nutrition Assistance Program
	Total	Family Assistance-FP	Safety Net Assistance		
New York State	566,688	252,677	314,011	698,607	3,057,644
New York City	341,498	138,813	202,685	426,989	1,732,347
Rest of State	225,190	113,864	111,326	271,618	1,325,297

Table 3
TEMPORARY AND DISABILITY ASSISTANCE EXPENDITURES
November 2014

Region	Expenditures				
	Temporary Assistance by Program			Supplemental Security Income	Supplemental Nutrition Assistance Program
	Total	Family Assistance-FP	Safety Net Assistance		
New York State	\$176,987,332	\$66,153,247	\$110,834,085	\$409,020,830	\$430,248,769
New York City	109,663,189	34,823,803	74,839,386	252,705,546	255,181,584
Rest of State	67,324,143	31,329,444	35,994,699	156,315,284	175,067,185

Note: Supplemental Security Income data listed here do not include Mental Hygiene data. See Tables 17 - 19 for total Supplemental Security Income data.

Table 4
TEMPORARY ASSISTANCE
 Year to Year Monthly Comparison by Local District
 Cases, Recipients and Expenditures
 November 2014

Local District	November 2014			November 2013			November 2012		
	Cases	Recipients	Expenditures	Cases	Recipients	Expenditures	Cases	Recipients	Expenditures
New York State	295,083	566,688	\$176,987,332	295,928	568,983	\$179,695,775	298,478	571,304	\$181,483,513
New York City	183,279	341,498	109,663,189	182,829	340,896	109,673,073	187,055	347,923	112,401,292
Rest of State	111,804	225,190	67,324,143	113,099	228,087	70,022,702	111,423	223,381	69,082,221
Albany	2,768	6,137	1,817,803	3,076	6,754	1,844,375	3,004	6,583	2,042,322
Allegany	488	956	235,280	528	1,026	254,664	577	1,131	275,656
Broome	3,675	7,080	1,971,618	3,746	7,328	2,031,450	3,848	7,564	2,144,304
Cattaraugus	628	1,019	312,162	529	848	263,819	510	821	259,458
Cayuga	823	1,562	499,952	802	1,512	458,912	678	1,364	396,018
Chautauqua	2,604	5,517	1,322,290	2,681	5,888	1,424,229	2,658	5,813	1,451,783
Chemung	836	1,453	438,124	825	1,506	428,489	826	1,585	468,584
Chenango	457	799	216,139	387	672	212,513	404	720	208,267
Clinton	870	1,434	503,602	951	1,609	560,181	938	1,619	531,565
Columbia	524	1,019	295,751	556	1,058	371,083	523	990	335,038
Cortland	644	1,073	339,400	648	1,210	367,254	569	1,086	308,850
Delaware	287	503	150,743	302	489	155,254	278	467	133,434
Dutchess	1,356	2,493	907,850	1,395	2,577	1,214,396	1,531	2,899	1,061,541
Erie	14,747	32,577	7,081,504	14,270	31,092	7,170,785	13,357	28,534	6,838,201
Essex	143	232	85,328	141	247	106,994	140	222	83,216
Franklin	506	931	252,600	488	931	240,337	486	912	235,747
Fulton	318	500	162,407	353	639	185,676	338	611	196,027
Genesee	306	588	163,113	371	667	213,202	318	611	182,935
Greene	438	830	249,292	555	1,054	328,352	580	1,158	358,411
Hamilton	18	24	5,979	13	21	4,318	14	22	9,825
Herkimer	537	947	266,305	507	935	258,444	536	995	288,514
Jefferson	1,141	1,911	594,725	932	1,533	521,751	905	1,446	499,362
Lewis	112	186	54,608	124	200	67,013	110	186	58,881
Livingston	826	1,561	432,382	829	1,599	450,450	700	1,306	363,545
Madison	403	721	238,132	395	737	226,328	375	729	193,862
Monroe	15,622	32,320	8,516,071	16,482	33,606	9,204,776	16,194	32,849	8,964,483
Montgomery	590	1,381	314,532	544	1,268	280,634	541	1,263	295,380
Nassau	7,529	13,730	5,021,600	7,271	13,437	4,804,434	7,905	14,440	6,135,631
Niagara	3,226	6,319	1,414,060	3,224	6,265	1,507,462	2,923	5,643	1,091,774
Oneida	4,436	10,417	2,189,381	4,407	10,403	2,242,587	4,211	9,931	2,309,416
Onondaga	7,349	16,065	3,831,036	7,484	16,036	3,988,811	7,341	15,837	3,957,609
Ontario	888	1,496	480,106	829	1,427	479,404	811	1,442	477,582
Orange	2,892	6,184	1,961,915	3,303	6,981	2,576,166	3,236	6,983	2,637,074
Orleans	728	1,289	387,716	703	1,292	347,193	611	1,146	312,584
Oswego	1,708	3,610	907,859	1,655	3,517	838,526	1,515	3,097	787,917
Otsego	200	290	147,963	242	385	202,501	219	361	177,691
Putnam	139	202	111,146	132	184	120,681	105	141	86,372
Rensselaer	1,742	4,216	1,038,450	1,738	4,331	1,078,162	1,630	4,066	1,065,194
Rockland	1,530	2,991	954,972	1,670	3,315	999,867	1,745	3,471	1,137,264
St. Lawrence	1,343	2,642	663,201	1,230	2,449	610,923	1,222	2,377	632,573
Saratoga	395	628	242,943	401	589	233,290	405	569	286,168
Schenectady	1,913	4,259	1,074,905	1,937	4,283	1,051,398	1,742	3,725	1,106,881
Schoharie	207	356	109,846	210	373	119,718	156	264	100,169
Schuyler	199	383	103,143	229	425	142,632	223	415	151,190
Seneca	261	513	145,891	249	477	135,526	197	351	99,013
Steuben	968	1,815	478,697	998	1,911	526,081	947	1,828	498,623
Suffolk	10,237	18,954	10,161,415	9,864	18,602	8,747,568	10,512	19,566	7,987,874
Sullivan	638	1,314	369,975	871	1,781	500,039	1,080	2,221	664,510
Tioga	398	655	246,052	401	679	238,560	388	641	261,154
Tompkins	827	1,426	450,677	913	1,615	515,117	824	1,495	467,733
Ulster	2,174	3,992	1,419,815	2,122	4,038	1,324,502	2,080	3,924	1,403,748
Warren	221	361	132,319	229	381	170,171	219	336	146,687
Washington	351	619	229,425	353	584	245,739	362	581	259,578
Wayne	625	1,051	346,723	635	1,075	314,691	606	1,040	288,184
Westchester	6,678	13,091	5,086,146	7,018	13,666	6,935,781	6,944	13,435	6,194,261
Wyoming	181	321	99,030	200	338	102,389	178	338	89,370
Yates	154	247	90,044	151	242	77,104	148	231	83,188

Table 5
TEMPORARY ASSISTANCE
Cases, Recipients, Children, Adults and Expenditures by Local District
November 2014

Local District	Temporary Assistance				
	Cases	Recipients	Children	Adults	Expenditures
New York State	295,083	566,688	299,267	267,421	\$176,987,332
New York City	183,279	341,498	171,144	170,354	109,663,189
Rest of State	111,804	225,190	128,123	97,067	67,324,143
Albany	2,768	6,137	3,764	2,373	1,817,803
Allegany	488	956	549	407	235,280
Broome	3,675	7,080	4,029	3,051	1,971,618
Cattaraugus	628	1,019	584	435	312,162
Cayuga	823	1,562	846	716	499,952
Chautauqua	2,604	5,517	3,168	2,349	1,322,290
Chemung	836	1,453	933	520	438,124
Chenango	457	799	458	341	216,139
Clinton	870	1,434	831	603	503,602
Columbia	524	1,019	562	457	295,751
Cortland	644	1,073	509	564	339,400
Delaware	287	503	306	197	150,743
Dutchess	1,356	2,493	1,573	920	907,850
Erie	14,747	32,577	19,010	13,567	7,081,504
Essex	143	232	142	90	85,328
Franklin	506	931	483	448	252,600
Fulton	318	500	295	205	162,407
Genesee	306	588	343	245	163,113
Greene	438	830	442	388	249,292
Hamilton	18	24	9	15	5,979
Herkimer	537	947	548	399	266,305
Jefferson	1,141	1,911	917	994	594,725
Lewis	112	186	121	65	54,608
Livingston	826	1,561	787	774	432,382
Madison	403	721	419	302	238,132
Monroe	15,622	32,320	18,224	14,096	8,516,071
Montgomery	590	1,381	888	493	314,532
Nassau	7,529	13,730	7,221	6,509	5,021,600
Niagara	3,226	6,319	3,493	2,826	1,414,060
Oneida	4,436	10,417	6,107	4,310	2,189,381
Onondaga	7,349	16,065	9,455	6,610	3,831,036
Ontario	888	1,496	806	690	480,106
Orange	2,892	6,184	3,669	2,515	1,961,915
Orleans	728	1,289	683	606	387,716
Oswego	1,708	3,610	2,025	1,585	907,859
Otsego	200	290	152	138	147,963
Putnam	139	202	106	96	111,146
Rensselaer	1,742	4,216	2,690	1,526	1,038,450
Rockland	1,530	2,991	1,770	1,221	954,972
St. Lawrence	1,343	2,642	1,401	1,241	663,201
Saratoga	395	628	409	219	242,943
Schenectady	1,913	4,259	2,714	1,545	1,074,905
Schoharie	207	356	200	156	109,846
Schuyler	199	383	197	186	103,143
Seneca	261	513	300	213	145,891
Steuben	968	1,815	1,016	799	478,697
Suffolk	10,237	18,954	9,702	9,252	10,161,415
Sullivan	638	1,314	884	430	369,975
Tioga	398	655	425	230	246,052
Tompkins	827	1,426	702	724	450,677
Ulster	2,174	3,992	2,046	1,946	1,419,815
Warren	221	361	219	142	132,319
Washington	351	619	386	233	229,425
Wayne	625	1,051	591	460	346,723
Westchester	6,678	13,091	7,669	5,422	5,086,146
Wyoming	181	321	193	128	99,030
Yates	154	247	152	95	90,044

Table 6
FAMILY ASSISTANCE-FP
Cases, Recipients, Children, Adults and Expenditures by Local District
November 2014

Local District	Family Assistance-FP				
	Cases	Recipients	Children	Adults	Expenditures
New York State	109,214	252,677	187,565	65,112	\$66,153,247
New York City	60,290	138,813	103,350	35,463	34,823,803
Rest of State	48,924	113,864	84,215	29,649	31,329,444
Albany	1,396	3,244	2,377	867	976,854
Allegany	232	530	398	132	120,661
Broome	1,587	3,465	2,626	839	892,680
Cattaraugus	312	609	490	119	155,360
Cayuga	373	880	631	249	239,550
Chautauqua	1,193	2,804	2,022	782	633,764
Chemung	443	893	745	148	238,766
Chenango	228	486	375	111	118,678
Clinton	444	858	688	170	237,904
Columbia	262	617	443	174	141,138
Cortland	240	518	376	142	131,690
Delaware	162	351	283	68	86,299
Dutchess	685	1,456	1,176	280	478,289
Erie	6,469	15,700	11,430	4,270	3,440,870
Essex	79	160	131	29	44,553
Franklin	210	474	342	132	108,348
Fulton	164	333	277	56	83,453
Genesee	157	367	273	94	86,108
Greene	167	379	284	95	98,222
Hamilton	7	12	9	3	3,110
Herkimer	283	598	459	139	142,686
Jefferson	431	945	703	242	223,681
Lewis	63	123	105	18	33,084
Livingston	368	884	600	284	210,285
Madison	194	415	318	97	107,763
Monroe	6,305	15,148	10,902	4,246	3,812,963
Montgomery	379	944	695	249	191,608
Nassau	2,893	6,406	4,787	1,619	2,128,674
Niagara	1,389	3,184	2,310	874	671,944
Oneida	1,971	5,139	3,685	1,454	1,062,636
Onondaga	3,391	8,187	5,922	2,265	1,894,204
Ontario	406	853	654	199	216,115
Orange	1,263	3,012	2,257	755	922,249
Orleans	296	605	447	158	162,782
Oswego	815	2,040	1,447	593	474,496
Otsego	97	176	140	36	64,385
Putnam	58	108	93	15	29,668
Rensselaer	1,025	2,434	1,730	704	608,819
Rockland	676	1,547	1,262	285	463,476
St. Lawrence	573	1,300	938	362	291,368
Saratoga	220	419	362	57	133,673
Schenectady	1,013	2,369	1,779	590	561,260
Schoharie	101	221	175	46	51,850
Schuyler	76	195	141	54	46,014
Seneca	122	280	209	71	68,843
Steuben	407	933	706	227	222,455
Suffolk	3,820	9,079	6,625	2,454	4,295,832
Sullivan	347	763	625	138	191,112
Tioga	247	467	388	79	150,230
Tompkins	310	659	480	179	173,449
Ulster	937	2,104	1,477	627	652,806
Warren	120	244	197	47	65,931
Washington	183	391	325	66	116,380
Wayne	314	651	501	150	197,513
Westchester	2,839	6,544	5,104	1,440	2,266,545
Wyoming	99	212	166	46	55,348
Yates	83	149	125	24	51,020

Table 7
SAFETY NET ASSISTANCE*
Cases, Recipients, Children, Adults and Expenditures by Local District
November 2014

Local District	Safety Net Assistance				
	Cases	Recipients	Children	Adults	Expenditures
New York State	185,869	314,011	111,702	202,309	\$110,834,085
New York City	122,989	202,685	67,794	134,891	74,839,386
Rest of State	62,880	111,326	43,908	67,418	35,994,699
Albany	1,372	2,893	1,387	1,506	840,949
Allegany	256	426	151	275	114,619
Broome	2,088	3,615	1,403	2,212	1,078,938
Cattaraugus	316	410	94	316	156,802
Cayuga	450	682	215	467	260,402
Chautauqua	1,411	2,713	1,146	1,567	688,526
Chemung	393	560	188	372	199,358
Chenango	229	313	83	230	97,461
Clinton	426	576	143	433	265,698
Columbia	262	402	119	283	154,613
Cortland	404	555	133	422	207,710
Delaware	125	152	23	129	64,444
Dutchess	671	1,037	397	640	429,561
Erie	8,278	16,877	7,580	9,297	3,640,634
Essex	64	72	11	61	40,775
Franklin	296	457	141	316	144,252
Fulton	154	167	18	149	78,954
Genesee	149	221	70	151	77,005
Greene	271	451	158	293	151,070
Hamilton	11	12	0	12	2,869
Herkimer	254	349	89	260	123,619
Jefferson	710	966	214	752	371,044
Lewis	49	63	16	47	21,524
Livingston	458	677	187	490	222,097
Madison	209	306	101	205	130,369
Monroe	9,317	17,172	7,322	9,850	4,703,108
Montgomery	211	437	193	244	122,924
Nassau	4,636	7,324	2,434	4,890	2,892,926
Niagara	1,837	3,135	1,183	1,952	742,116
Oneida	2,465	5,278	2,422	2,856	1,126,745
Onondaga	3,958	7,878	3,533	4,345	1,936,832
Ontario	482	643	152	491	263,991
Orange	1,629	3,172	1,412	1,760	1,039,666
Orleans	432	684	236	448	224,934
Oswego	893	1,570	578	992	433,363
Otsego	103	114	12	102	83,578
Putnam	81	94	13	81	81,478
Rensselaer	717	1,782	960	822	429,631
Rockland	854	1,444	508	936	491,496
St. Lawrence	770	1,342	463	879	371,833
Saratoga	175	209	47	162	109,270
Schenectady	900	1,890	935	955	513,645
Schoharie	106	135	25	110	57,996
Schuyler	123	188	56	132	57,129
Seneca	139	233	91	142	77,048
Steuben	561	882	310	572	256,242
Suffolk	6,417	9,875	3,077	6,798	5,865,583
Sullivan	291	551	259	292	178,863
Tioga	151	188	37	151	95,822
Tompkins	517	767	222	545	277,228
Ulster	1,237	1,888	569	1,319	767,009
Warren	101	117	22	95	66,388
Washington	168	228	61	167	113,045
Wayne	311	400	90	310	149,210
Westchester	3,839	6,547	2,565	3,982	2,819,601
Wyoming	82	109	27	82	43,682
Yates	71	98	27	71	39,024

* Includes Federally Non-Participating Family Assistance cases (non-disabled two-parent Family Assistance cases).

Table 8
TEMPORARY ASSISTANCE BY FUNDING SOURCE
 Cases, Recipients, and Expenditures by Local District
 November 2014

Local District	Total			Federally Participating-TANF Family Assistance-FP and Safety Net Assistance-FP			Federally Non-Participating Safety Net Assistance-FNP and Family Assistance-FNP		
	Cases	Recipients	Expenditures	Cases	Recipients	Expenditures	Cases	Recipients	Expenditures
New York State	295,083	566,688	\$176,987,332	110,447	255,842	\$66,903,232	184,636	310,846	\$110,084,100
New York City	183,279	341,498	109,663,189	60,512	139,293	34,912,745	122,767	202,205	74,750,444
Rest of State	111,804	225,190	67,324,143	49,935	116,549	31,990,487	61,869	108,641	35,333,656
Albany	2,768	6,137	1,817,803	1,408	3,274	986,381	1,360	2,863	831,422
Allegany	488	956	235,280	233	533	122,607	255	423	112,673
Broome	3,675	7,080	1,971,618	1,624	3,566	916,274	2,051	3,514	1,055,344
Cattaraugus	628	1,019	312,162	314	614	156,189	314	405	155,973
Cayuga	823	1,562	499,952	391	927	249,037	432	635	250,915
Chautauqua	2,604	5,517	1,322,290	1,205	2,835	638,826	1,399	2,682	683,464
Chemung	836	1,453	438,124	449	912	242,821	387	541	195,303
Chenango	457	799	216,139	230	490	119,090	227	309	97,049
Clinton	870	1,434	503,602	452	880	243,716	418	554	259,886
Columbia	524	1,019	295,751	266	630	143,144	258	389	152,607
Cortland	644	1,073	339,400	249	539	135,831	395	534	203,569
Delaware	287	503	150,743	162	351	86,299	125	152	64,444
Dutchess	1,356	2,493	907,850	692	1,478	490,540	664	1,015	417,310
Erie	14,747	32,577	7,081,504	6,564	15,944	3,488,097	8,183	16,633	3,593,407
Essex	143	232	85,328	83	170	47,627	60	62	37,701
Franklin	506	931	252,600	211	475	108,648	295	456	143,952
Fulton	318	500	162,407	166	338	84,272	152	162	78,135
Genesee	306	588	163,113	162	381	89,361	144	207	73,752
Greene	438	830	249,292	172	394	101,023	266	436	148,269
Hamilton	18	24	5,979	7	12	3,110	11	12	2,869
Herkimer	537	947	266,305	286	605	144,240	251	342	122,065
Jefferson	1,141	1,911	594,725	454	998	236,327	687	913	358,398
Lewis	112	186	54,608	64	125	34,638	48	61	19,970
Livingston	826	1,561	432,382	380	911	217,167	446	650	215,215
Madison	403	721	238,132	206	455	118,220	197	266	119,912
Monroe	15,622	32,320	8,516,071	6,642	16,046	4,004,549	8,980	16,274	4,511,522
Montgomery	590	1,381	314,532	383	952	193,868	207	429	120,664
Nassau	7,529	13,730	5,021,600	2,906	6,435	2,136,679	4,623	7,295	2,884,921
Niagara	3,226	6,319	1,414,060	1,450	3,344	697,809	1,776	2,975	716,251
Oneida	4,436	10,417	2,189,381	2,011	5,251	1,082,754	2,425	5,166	1,106,627
Onondaga	7,349	16,065	3,831,036	3,409	8,240	1,903,318	3,940	7,825	1,927,718
Ontario	888	1,496	480,106	412	866	220,212	476	630	259,894
Orange	2,892	6,184	1,961,915	1,276	3,040	929,415	1,616	3,144	1,032,500
Orleans	728	1,289	387,716	303	628	167,696	425	661	220,020
Oswego	1,708	3,610	907,859	846	2,146	491,144	862	1,464	416,715
Otsego	200	290	147,963	99	180	65,431	101	110	82,532
Putnam	139	202	111,146	59	111	33,534	80	91	77,612
Rensselaer	1,742	4,216	1,038,450	1,046	2,485	623,797	696	1,731	414,653
Rockland	1,530	2,991	954,972	679	1,556	465,072	851	1,435	489,900
St. Lawrence	1,343	2,642	663,201	576	1,305	295,434	767	1,337	367,767
Saratoga	395	628	242,943	225	428	138,462	170	200	104,481
Schenectady	1,913	4,259	1,074,905	1,016	2,379	563,591	897	1,880	511,314
Schoharie	207	356	109,846	101	221	51,850	106	135	57,996
Schuyler	199	383	103,143	76	195	46,014	123	188	57,129
Seneca	261	513	145,891	123	283	69,382	138	230	76,509
Steuben	968	1,815	478,697	407	933	222,455	561	882	256,242
Suffolk	10,237	18,954	10,161,415	3,898	9,304	4,406,970	6,339	9,650	5,754,445
Sullivan	638	1,314	369,975	354	782	194,278	284	532	175,697
Tioga	398	655	246,052	251	475	157,305	147	180	88,747
Tompkins	827	1,426	450,677	321	677	178,990	506	749	271,687
Ulster	2,174	3,992	1,419,815	948	2,129	658,277	1,226	1,863	761,538
Warren	221	361	132,319	125	259	69,069	96	102	63,250
Washington	351	619	229,425	193	419	125,891	158	200	103,534
Wayne	625	1,051	346,723	330	689	205,818	295	362	140,905
Westchester	6,678	13,091	5,086,146	2,858	6,593	2,281,570	3,820	6,498	2,804,576
Wyoming	181	321	99,030	99	212	55,348	82	109	43,682
Yates	154	247	90,044	83	149	51,020	71	98	39,024

Table 9
TEMPORARY ASSISTANCE FOR NEEDY FAMILIES-FP BY PROGRAM
 Cases, Recipients, Children, Adults and Expenditures by Local District
 November 2014

Local District	Family Assistance-FP					Safety Net Assistance-FP				
	Cases	Recipients	Children	Adults	Expenditures	Cases	Recipients	Children	Adults	Expenditures
New York State	109,214	252,677	187,565	65,112	\$66,153,247	1,233	3,165	1,870	1,295	\$749,985
New York City	60,290	138,813	103,350	35,463	34,823,803	222	480	336	144	88,942
Rest of State	48,924	113,864	84,215	29,649	31,329,444	1,011	2,685	1,534	1,151	661,043
Albany	1,396	3,244	2,377	867	976,854	12	30	18	12	9,527
Allegany	232	530	398	132	120,661	1	3	1	2	1,946
Broome	1,587	3,465	2,626	839	892,680	37	101	54	47	23,594
Cattaraugus	312	609	490	119	155,360	2	5	3	2	829
Cayuga	373	880	631	249	239,550	18	47	27	20	9,487
Chautauqua	1,193	2,804	2,022	782	633,764	12	31	19	12	5,062
Chemung	443	893	745	148	238,766	6	19	13	6	4,055
Chenango	228	486	375	111	118,678	2	4	1	3	412
Clinton	444	858	688	170	237,904	8	22	13	9	5,812
Columbia	262	617	443	174	141,138	4	13	7	6	2,006
Cortland	240	518	376	142	131,690	9	21	10	11	4,141
Delaware	162	351	283	68	86,299	0	0	0	0	0
Dutchess	685	1,456	1,176	280	478,289	7	22	13	9	12,251
Erie	6,469	15,700	11,430	4,270	3,440,870	95	244	135	109	47,227
Essex	79	160	131	29	44,553	4	10	6	4	3,074
Franklin	210	474	342	132	108,348	1	1	0	1	300
Fulton	164	333	277	56	83,453	2	5	3	2	819
Genesee	157	367	273	94	86,108	5	14	9	5	3,253
Greene	167	379	284	95	98,222	5	15	8	7	2,801
Hamilton	7	12	9	3	3,110	0	0	0	0	0
Herkimer	283	598	459	139	142,686	3	7	3	4	1,554
Jefferson	431	945	703	242	223,681	23	53	28	25	12,646
Lewis	63	123	105	18	33,084	1	2	1	1	1,554
Livingston	368	884	600	284	210,285	12	27	14	13	6,882
Madison	194	415	318	97	107,763	12	40	26	14	10,457
Monroe	6,305	15,148	10,902	4,246	3,812,963	337	898	524	374	191,586
Montgomery	379	944	695	249	191,608	4	8	4	4	2,260
Nassau	2,893	6,406	4,787	1,619	2,128,674	13	29	16	13	8,005
Niagara	1,389	3,184	2,310	874	671,944	61	160	90	70	25,865
Oneida	1,971	5,139	3,685	1,454	1,062,636	40	112	64	48	20,118
Onondaga	3,391	8,187	5,922	2,265	1,894,204	18	53	31	22	9,114
Ontario	406	853	654	199	216,115	6	13	6	7	4,097
Orange	1,263	3,012	2,257	755	922,249	13	28	14	14	7,166
Orleans	296	605	447	158	162,782	7	23	15	8	4,914
Oswego	815	2,040	1,447	593	474,496	31	106	64	42	16,648
Otsego	97	176	140	36	64,385	2	4	2	2	1,046
Putnam	58	108	93	15	29,668	1	3	2	1	3,866
Rensselaer	1,025	2,434	1,730	704	608,819	21	51	28	23	14,978
Rockland	676	1,547	1,262	285	463,476	3	9	5	4	1,596
St. Lawrence	573	1,300	938	362	291,368	3	5	2	3	4,066
Saratoga	220	419	362	57	133,673	5	9	4	5	4,789
Schenectady	1,013	2,369	1,779	590	561,260	3	10	7	3	2,331
Schoharie	101	221	175	46	51,850	0	0	0	0	0
Schuyler	76	195	141	54	46,014	0	0	0	0	0
Seneca	122	280	209	71	68,843	1	3	2	1	539
Steuben	407	933	706	227	222,455	0	0	0	0	0
Suffolk	3,820	9,079	6,625	2,454	4,295,832	78	225	132	93	111,138
Sullivan	347	763	625	138	191,112	7	19	11	8	3,166
Tioga	247	467	388	79	150,230	4	8	3	5	7,075
Tompkins	310	659	480	179	173,449	11	18	7	11	5,541
Ulster	937	2,104	1,477	627	652,806	11	25	11	14	5,471
Warren	120	244	197	47	65,931	5	15	9	6	3,138
Washington	183	391	325	66	116,380	10	28	18	10	9,511
Wayne	314	651	501	150	197,513	16	38	21	17	8,305
Westchester	2,839	6,544	5,104	1,440	2,266,545	19	49	30	19	15,025
Wyoming	99	212	166	46	55,348	0	0	0	0	0
Yates	83	149	125	24	51,020	0	0	0	0	0

Table 10
 SAFETY NET ASSISTANCE-FNP AND FAMILY ASSISTANCE-FNP
 Cases, Recipients, Children, Adults and Expenditures by Local District
 November 2014

Local District	Safety Net Assistance-FNP and Family Assistance-FNP				
	Cases	Recipients	Children	Adults	Expenditures
New York State	184,636	310,846	109,832	201,014	\$110,084,100
New York City	122,767	202,205	67,458	134,747	74,750,444
Rest of State	61,869	108,641	42,374	66,267	35,333,656
Albany	1,360	2,863	1,369	1,494	831,422
Allegany	255	423	150	273	112,673
Broome	2,051	3,514	1,349	2,165	1,055,344
Cattaraugus	314	405	91	314	155,973
Cayuga	432	635	188	447	250,915
Chautauqua	1,399	2,682	1,127	1,555	683,464
Chemung	387	541	175	366	195,303
Chenango	227	309	82	227	97,049
Clinton	418	554	130	424	259,886
Columbia	258	389	112	277	152,607
Cortland	395	534	123	411	203,569
Delaware	125	152	23	129	64,444
Dutchess	664	1,015	384	631	417,310
Erie	8,183	16,633	7,445	9,188	3,593,407
Essex	60	62	5	57	37,701
Franklin	295	456	141	315	143,952
Fulton	152	162	15	147	78,135
Genesee	144	207	61	146	73,752
Greene	266	436	150	286	148,269
Hamilton	11	12	0	12	2,869
Herkimer	251	342	86	256	122,065
Jefferson	687	913	186	727	358,398
Lewis	48	61	15	46	19,970
Livingston	446	650	173	477	215,215
Madison	197	266	75	191	119,912
Monroe	8,980	16,274	6,798	9,476	4,511,522
Montgomery	207	429	189	240	120,664
Nassau	4,623	7,295	2,418	4,877	2,884,921
Niagara	1,776	2,975	1,093	1,882	716,251
Oneida	2,425	5,166	2,358	2,808	1,106,627
Onondaga	3,940	7,825	3,502	4,323	1,927,718
Ontario	476	630	146	484	259,894
Orange	1,616	3,144	1,398	1,746	1,032,500
Orleans	425	661	221	440	220,020
Oswego	862	1,464	514	950	416,715
Otsego	101	110	10	100	82,532
Putnam	80	91	11	80	77,612
Rensselaer	696	1,731	932	799	414,653
Rockland	851	1,435	503	932	489,900
St. Lawrence	767	1,337	461	876	367,767
Saratoga	170	200	43	157	104,481
Schenectady	897	1,880	928	952	511,314
Schoharie	106	135	25	110	57,996
Schuyler	123	188	56	132	57,129
Seneca	138	230	89	141	76,509
Steuben	561	882	310	572	256,242
Suffolk	6,339	9,650	2,945	6,705	5,754,445
Sullivan	284	532	248	284	175,697
Tioga	147	180	34	146	88,747
Tompkins	506	749	215	534	271,687
Ulster	1,226	1,863	558	1,305	761,538
Warren	96	102	13	89	63,250
Washington	158	200	43	157	103,534
Wayne	295	362	69	293	140,905
Westchester	3,820	6,498	2,535	3,963	2,804,576
Wyoming	82	109	27	82	43,682
Yates	71	98	27	71	39,024

Table 11
SAFETY NET ASSISTANCE-FNP BY MAINTENANCE OF EFFORT STATUS
 Maintenance of Effort (MOE) vs. Non-Maintenance of Effort (Non-MOE)
 Cases, Recipients, Children, Adults and Expenditures by Local District
 November 2014

Local District	Maintenance of Effort (MOE)					Non-Maintenance of Effort (Non-MOE)*				
	Cases	Recipients	Children	Adults	Expenditures	Cases	Recipients	Children	Adults	Expenditures
New York State	35,699	116,448	79,275	37,173	\$23,819,463	148,937	194,398	30,557	163,841	\$86,264,637
New York City	24,373	76,629	51,159	25,470	15,248,443	98,394	125,576	16,299	109,277	59,502,001
Rest of State	11,326	39,819	28,116	11,703	8,571,020	50,543	68,822	14,258	54,564	26,762,636
Albany	329	1,179	846	333	263,757	1,031	1,684	523	1,161	567,665
Allegany	34	105	70	35	19,761	221	318	80	238	92,912
Broome	368	1,303	911	392	217,473	1,683	2,211	438	1,773	837,871
Cattaraugus	19	75	55	20	12,690	295	330	36	294	143,283
Cayuga	42	147	101	46	38,013	390	488	87	401	212,902
Chautauqua	345	1,138	760	378	212,161	1,054	1,544	367	1,177	471,303
Chemung	34	141	103	38	21,159	353	400	72	328	174,144
Chenango	13	48	35	13	6,398	214	261	47	214	90,651
Clinton	36	112	73	39	24,178	382	442	57	385	235,708
Columbia	27	98	70	28	16,130	231	291	42	249	136,477
Cortland	39	124	82	42	22,799	356	410	41	369	180,770
Delaware	3	11	8	3	1,797	122	141	15	126	62,647
Dutchess	98	337	243	94	74,213	566	678	141	537	343,097
Erie	1,711	6,188	4,440	1,748	972,722	6,472	10,445	3,005	7,440	2,620,685
Essex	1	2	1	1	231	59	60	4	56	37,470
Franklin	39	120	81	39	23,492	256	336	60	276	120,460
Fulton	0	0	0	0	0	152	162	15	147	78,135
Genesee	15	57	41	16	7,754	129	150	20	130	65,998
Greene	38	129	91	38	19,398	228	307	59	248	128,871
Hamilton	0	0	0	0	0	11	12	0	12	2,869
Herkimer	24	78	55	23	13,532	227	264	31	233	108,533
Jefferson	37	124	83	41	19,509	650	789	103	686	338,889
Lewis	2	6	4	2	715	46	55	11	44	19,255
Livingston	43	139	93	46	29,653	403	511	80	431	185,562
Madison	22	66	45	21	14,734	175	200	30	170	105,178
Monroe	2,210	7,698	5,407	2,291	1,470,768	6,770	8,576	1,391	7,185	3,040,754
Montgomery	44	158	113	45	23,290	163	271	76	195	97,374
Nassau	838	2,707	1,854	853	776,290	3,785	4,588	564	4,024	2,108,631
Niagara	307	1,088	768	320	159,844	1,469	1,887	325	1,562	556,407
Oneida	444	1,713	1,253	460	263,531	1,981	3,453	1,105	2,348	843,096
Onondaga	683	2,635	1,949	686	424,100	3,257	5,190	1,553	3,637	1,503,618
Ontario	35	114	78	36	24,984	441	516	68	448	234,910
Orange	399	1,421	1,010	411	320,538	1,217	1,723	388	1,335	711,962
Orleans	54	176	118	58	33,004	371	485	103	382	187,016
Oswego	102	384	268	116	62,804	760	1,080	246	834	353,911
Otsego	1	2	1	1	412	100	108	9	99	82,120
Putnam	4	11	8	3	2,531	76	80	3	77	75,081
Rensselaer	229	820	585	235	141,439	467	911	347	564	273,214
Rockland	69	241	169	72	42,750	782	1,194	334	860	447,150
St. Lawrence	91	300	205	95	51,003	676	1,037	256	781	316,764
Saratoga	0	0	0	0	0	170	200	43	157	104,481
Schenectady	229	898	662	236	145,650	668	982	266	716	365,664
Schoharie	3	11	8	3	1,074	103	124	17	107	56,922
Schuyler	12	39	25	14	5,579	111	149	31	118	51,550
Seneca	18	71	51	20	10,185	120	159	38	121	66,324
Steuben	78	263	182	81	38,187	483	619	128	491	218,055
Suffolk	815	2,992	2,124	868	1,342,938	5,524	6,658	821	5,837	4,411,507
Sullivan	59	204	145	59	39,335	225	328	103	225	136,362
Tioga	4	14	12	2	2,392	143	166	22	144	86,355
Tompkins	54	198	139	59	29,574	452	551	76	475	242,113
Ulster	154	492	341	151	97,848	1,072	1,371	217	1,154	663,690
Warren	2	4	4	0	895	94	98	9	89	62,355
Washington	4	14	10	4	2,916	154	186	33	153	100,618
Wayne	20	58	38	20	13,164	275	304	31	273	127,741
Westchester	1,038	3,332	2,272	1,060	1,006,305	2,782	3,166	263	2,903	1,798,271
Wyoming	5	23	17	6	3,313	77	86	10	76	40,369
Yates	2	11	9	2	2,108	69	87	18	69	36,916

* The Non-MOE category includes otherwise Temporary Assistance for Needy Families eligible or otherwise Safety Net Assistance MOE eligible non-disabled two-parent cases.

Table 12
SAFETY NET ASSISTANCE-FNP-CASH TOTAL*
 Cases, Recipients, Children, Adults and Expenditures by Local District
 November 2014

Local District	Safety Net Assistance-FNP Cash Total				
	Cases	Recipients	Children	Adults	Expenditures
New York State	See Note	See Note	See Note	See Note	See Note
New York City	See Note	See Note	See Note	See Note	See Note
Rest of State	35,627	52,015	12,967	39,048	\$18,596,610
Albany	725	1,288	450	838	400,821
Allegany	155	250	74	176	59,112
Broome	1,099	1,506	317	1,189	530,916
Cattaraugus	234	293	50	243	118,219
Cayuga	311	400	81	319	162,010
Chautauqua	724	1,109	290	819	312,964
Chemung	284	341	83	258	133,925
Chenango	185	235	50	185	77,594
Clinton	306	386	73	313	193,881
Columbia	174	230	39	191	80,391
Cortland	228	278	38	240	104,612
Delaware	105	128	19	109	54,968
Dutchess	407	582	196	386	213,459
Erie	4,803	8,386	2,729	5,657	2,031,034
Essex	51	52	4	48	31,297
Franklin	192	259	49	210	89,446
Fulton	114	121	13	108	51,602
Genesee	87	106	18	88	36,207
Greene	170	241	51	190	89,548
Hamilton	10	11	0	11	2,777
Herkimer	164	204	32	172	74,813
Jefferson	466	593	93	500	227,969
Lewis	33	42	7	35	11,785
Livingston	335	435	74	361	148,763
Madison	131	172	43	129	78,156
Monroe	4,352	6,274	1,566	4,708	1,957,571
Montgomery	113	205	63	142	62,760
Nassau	2,565	3,172	426	2,746	1,415,239
Niagara	963	1,272	239	1,033	347,666
Oneida	1,569	2,904	1,002	1,902	653,621
Onondaga	2,883	4,808	1,591	3,217	1,318,971
Ontario	314	377	51	326	143,859
Orange	827	1,186	281	905	449,936
Orleans	252	356	97	259	127,872
Oswego	611	921	240	681	276,510
Otsego	80	86	6	80	67,930
Putnam	45	50	7	43	46,270
Rensselaer	361	695	260	435	186,402
Rockland	402	604	156	448	224,235
St. Lawrence	480	758	199	559	209,642
Saratoga	126	156	41	115	65,509
Schenectady	473	678	185	493	243,860
Schoharie	78	99	17	82	39,250
Schuyler	90	124	29	95	42,865
Seneca	87	138	46	92	46,266
Steuben	364	479	106	373	159,176
Suffolk	3,973	5,087	841	4,246	3,285,083
Sullivan	144	223	85	138	73,583
Tioga	112	135	21	114	57,136
Tompkins	288	363	63	300	167,188
Ulster	742	1,005	192	813	464,722
Warren	63	64	6	58	36,446
Washington	125	158	36	122	68,696
Wayne	181	211	25	186	73,914
Westchester	1,366	1,648	191	1,457	915,966
Wyoming	53	61	8	53	27,688
Yates	52	70	18	52	24,509

Note: A breakout of Safety Net Assistance-FNP-Cash and Safety Net Assistance-FNP-Non-Cash data is not available for New York City.

* May include otherwise Temporary Assistance for Needy Families eligible or otherwise Safety Net Assistance MOE eligible non-disabled two-parent cases.

Table 13
SAFETY NET ASSISTANCE-FNP-CASH BY MAINTENANCE OF EFFORT STATUS
Maintenance of Effort (MOE) vs. Non-Maintenance of Effort (Non-MOE)
Cases, Recipients, Children, Adults and Expenditures by Local District
November 2014

Local District	Maintenance of Effort (MOE)					Non-Maintenance of Effort (Non-MOE)*				
	Cases	Recipients	Children	Adults	Expenditures	Cases	Recipients	Children	Adults	Expenditures
New York State	See Note	See Note	See Note	See Note	See Note	See Note	See Note	See Note	See Note	See Note
New York City	See Note	See Note	See Note	See Note	See Note	See Note	See Note	See Note	See Note	See Note
Rest of State	1,152	3,839	2,583	1,256	\$890,544	34,475	48,176	10,384	37,792	\$17,706,066
Albany	22	67	45	22	18,808	703	1,221	405	816	382,013
Allegany	1	4	2	2	602	154	246	72	174	58,510
Broome	25	76	48	28	14,719	1,074	1,430	269	1,161	516,197
Cattaraugus	10	38	27	11	7,640	224	255	23	232	110,579
Cayuga	7	22	15	7	6,681	304	378	66	312	155,329
Chautauqua	23	69	39	30	11,922	701	1,040	251	789	301,042
Chemung	4	21	16	5	3,403	280	320	67	253	130,522
Chenango	2	5	3	2	879	183	230	47	183	76,715
Clinton	15	42	24	18	11,603	291	344	49	295	182,278
Columbia	4	14	10	4	1,055	170	216	29	187	79,336
Cortland	4	11	7	4	2,092	224	267	31	236	102,520
Delaware	1	5	4	1	964	104	123	15	108	54,004
Dutchess	43	140	99	41	27,772	364	442	97	345	185,687
Erie	183	589	395	194	106,547	4,620	7,797	2,334	5,463	1,924,487
Essex	0	0	0	0	0	51	52	4	48	31,297
Franklin	0	0	0	0	0	192	259	49	210	89,446
Fulton	0	0	0	0	0	114	121	13	108	51,602
Genesee	2	6	5	1	601	85	100	13	87	35,606
Greene	4	14	9	5	2,667	166	227	42	185	86,881
Hamilton	0	0	0	0	0	10	11	0	11	2,777
Herkimer	2	6	3	3	592	162	198	29	169	74,221
Jefferson	9	26	15	11	4,690	457	567	78	489	223,279
Lewis	0	0	0	0	0	33	42	7	35	11,785
Livingston	6	23	16	7	4,791	329	412	58	354	143,972
Madison	9	28	18	10	5,074	122	144	25	119	73,082
Monroe	220	738	504	234	151,187	4,132	5,536	1,062	4,474	1,806,384
Montgomery	3	11	7	4	1,872	110	194	56	138	60,888
Nassau	42	100	55	45	28,584	2,523	3,072	371	2,701	1,386,655
Niagara	23	67	41	26	12,051	940	1,205	198	1,007	335,615
Oneida	56	202	137	65	41,174	1,513	2,702	865	1,837	612,447
Onondaga	142	557	407	150	97,508	2,741	4,251	1,184	3,067	1,221,463
Ontario	0	0	0	0	0	314	377	51	326	143,859
Orange	34	105	67	38	31,445	793	1,081	214	867	418,491
Orleans	6	20	13	7	3,865	246	336	84	252	124,007
Oswego	21	68	41	27	10,522	590	853	199	654	265,988
Otsego	0	0	0	0	0	80	86	6	80	67,930
Putnam	2	5	4	1	1,397	43	45	3	42	44,873
Rensselaer	2	10	8	2	1,973	359	685	252	433	184,429
Rockland	5	17	12	5	2,748	397	587	144	443	221,487
St. Lawrence	14	50	35	15	7,782	466	708	164	544	201,860
Saratoga	0	0	0	0	0	126	156	41	115	65,509
Schenectady	8	26	18	8	5,578	465	652	167	485	238,282
Schoharie	0	0	0	0	0	78	99	17	82	39,250
Schuyler	4	14	9	5	1,811	86	110	20	90	41,054
Seneca	5	19	13	6	3,862	82	119	33	86	42,404
Steuben	6	20	14	6	3,407	358	459	92	367	155,769
Suffolk	126	453	306	147	209,043	3,847	4,634	535	4,099	3,076,040
Sullivan	4	15	10	5	2,950	140	208	75	133	70,633
Tioga	0	0	0	0	0	112	135	21	114	57,136
Tompkins	1	3	2	1	922	287	360	61	299	166,266
Ulster	7	19	12	7	3,158	735	986	180	806	461,564
Warren	0	0	0	0	0	63	64	6	58	36,446
Washington	2	8	6	2	1,686	123	150	30	120	67,010
Wayne	6	17	11	6	2,124	175	194	14	180	71,790
Westchester	37	89	51	38	30,793	1,329	1,559	140	1,419	885,173
Wyoming	0	0	0	0	0	53	61	8	53	27,688
Yates	0	0	0	0	0	52	70	18	52	24,509

Note: A breakout of Safety Net Assistance-FNP-Cash and Safety Net Assistance-FNP-Non-Cash data is not available for New York City.

* The Non-MOE category includes otherwise Temporary Assistance for Needy Families eligible or otherwise Safety Net Assistance MOE eligible non-disabled two-parent cases.

Table 14
SAFETY NET ASSISTANCE-FNP-NON-CASH TOTAL*
Cases, Recipients, Children, Adults and Expenditures by Local District
November 2014

Local District	Safety Net Assistance-FNP-Non-Cash Total				
	Cases	Recipients	Children	Adults	Expenditures
New York State	See Note	See Note	See Note	See Note	See Note
New York City	See Note	See Note	See Note	See Note	See Note
Rest of State	26,242	56,626	29,407	27,219	\$16,737,046
Albany	635	1,575	919	656	430,601
Allegany	100	173	76	97	53,561
Broome	952	2,008	1,032	976	524,428
Cattaraugus	80	112	41	71	37,754
Cayuga	121	235	107	128	88,905
Chautauqua	675	1,573	837	736	370,500
Chemung	103	200	92	108	61,378
Chenango	42	74	32	42	19,455
Clinton	112	168	57	111	66,005
Columbia	84	159	73	86	72,216
Cortland	167	256	85	171	98,957
Delaware	20	24	4	20	9,476
Dutchess	257	433	188	245	203,851
Erie	3,380	8,247	4,716	3,531	1,562,373
Essex	9	10	1	9	6,404
Franklin	103	197	92	105	54,506
Fulton	38	41	2	39	26,533
Genesee	57	101	43	58	37,545
Greene	96	195	99	96	58,721
Hamilton	1	1	0	1	92
Herkimer	87	138	54	84	47,252
Jefferson	221	320	93	227	130,429
Lewis	15	19	8	11	8,185
Livingston	111	215	99	116	66,452
Madison	66	94	32	62	41,756
Monroe	4,628	10,000	5,232	4,768	2,553,951
Montgomery	94	224	126	98	57,904
Nassau	2,058	4,123	1,992	2,131	1,469,682
Niagara	813	1,703	854	849	368,585
Oneida	856	2,262	1,356	906	453,006
Onondaga	1,057	3,017	1,911	1,106	608,747
Ontario	162	253	95	158	116,035
Orange	789	1,958	1,117	841	582,564
Orleans	173	305	124	181	92,148
Oswego	251	543	274	269	140,205
Otsego	21	24	4	20	14,602
Putnam	35	41	4	37	31,342
Rensselaer	335	1,036	672	364	228,251
Rockland	449	831	347	484	265,665
St. Lawrence	287	579	262	317	158,125
Saratoga	44	44	2	42	38,972
Schenectady	424	1,202	743	459	267,454
Schoharie	28	36	8	28	18,746
Schuyler	33	64	27	37	14,264
Seneca	51	92	43	49	30,243
Steuben	197	403	204	199	97,066
Suffolk	2,366	4,563	2,104	2,459	2,469,362
Sullivan	140	309	163	146	102,114
Tioga	35	45	13	32	31,611
Tompkins	218	386	152	234	104,499
Ulster	484	858	366	492	296,816
Warren	33	38	7	31	26,804
Washington	33	42	7	35	34,838
Wayne	114	151	44	107	66,991
Westchester	2,454	4,850	2,344	2,506	1,888,610
Wyoming	29	48	19	29	15,994
Yates	19	28	9	19	14,515

Note: A breakout of Safety Net Assistance-FNP-Cash and Safety Net Assistance-FNP-Non-Cash data is not available for New York City.

* May include otherwise Temporary Assistance for Needy Families eligible or otherwise Safety Net Assistance MOE eligible non-disabled two-parent cases.

Table 15
SAFETY NET ASSISTANCE-FNP-NON-CASH BY MAINTENANCE OF EFFORT STATUS
 Maintenance of Effort (MOE) vs. Non-Maintenance of Effort (Non-MOE)
 Cases, Recipients, Children, Adults and Expenditures by Local District
 November 2014

Local District	Maintenance of Effort (MOE)					Non-Maintenance of Effort (Non-MOE)*				
	Cases	Recipients	Children	Adults	Expenditures	Cases	Recipients	Children	Adults	Expenditures
New York State	See Note	See Note	See Note	See Note	See Note	See Note	See Note	See Note	See Note	See Note
New York City	See Note	See Note	See Note	See Note	See Note	See Note	See Note	See Note	See Note	See Note
Rest of State	10,174	35,980	25,533	10,447	\$7,680,476	16,068	20,646	3,874	16,772	\$9,056,570
Albany	307	1,112	801	311	244,949	328	463	118	345	185,652
Allegany	33	101	68	33	19,159	67	72	8	64	34,402
Broome	343	1,227	863	364	202,754	609	781	169	612	321,674
Cattaraugus	9	37	28	9	5,050	71	75	13	62	32,704
Cayuga	35	125	86	39	31,332	86	110	21	89	57,573
Chautauqua	322	1,069	721	348	200,239	353	504	116	388	170,261
Chemung	30	120	87	33	17,756	73	80	5	75	43,622
Chenango	11	43	32	11	5,519	31	31	0	31	13,936
Clinton	21	70	49	21	12,575	91	98	8	90	53,430
Columbia	23	84	60	24	15,075	61	75	13	62	57,141
Cortland	35	113	75	38	20,707	132	143	10	133	78,250
Delaware	2	6	4	2	833	18	18	0	18	8,643
Dutchess	55	197	144	53	46,441	202	236	44	192	157,410
Erie	1,528	5,599	4,045	1,554	866,175	1,852	2,648	671	1,977	696,198
Essex	1	2	1	1	231	8	8	0	8	6,173
Franklin	39	120	81	39	23,492	64	77	11	66	31,014
Fulton	0	0	0	0	0	38	41	2	39	26,533
Genesee	13	51	36	15	7,153	44	50	7	43	30,392
Greene	34	115	82	33	16,731	62	80	17	63	41,990
Hamilton	0	0	0	0	0	1	1	0	1	92
Herkimer	22	72	52	20	12,940	65	66	2	64	34,312
Jefferson	28	98	68	30	14,819	193	222	25	197	115,610
Lewis	2	6	4	2	715	13	13	4	9	7,470
Livingston	37	116	77	39	24,862	74	99	22	77	41,590
Madison	13	38	27	11	9,660	53	56	5	51	32,096
Monroe	1,990	6,960	4,903	2,057	1,319,581	2,638	3,040	329	2,711	1,234,370
Montgomery	41	147	106	41	21,418	53	77	20	57	36,486
Nassau	796	2,607	1,799	808	747,706	1,262	1,516	193	1,323	721,976
Niagara	284	1,021	727	294	147,793	529	682	127	555	220,792
Oneida	388	1,511	1,116	395	222,357	468	751	240	511	230,649
Onondaga	541	2,078	1,542	536	326,592	516	939	369	570	282,155
Ontario	35	114	78	36	24,984	127	139	17	122	91,051
Orange	365	1,316	943	373	289,093	424	642	174	468	293,471
Orleans	48	156	105	51	29,139	125	149	19	130	63,009
Oswego	81	316	227	89	52,282	170	227	47	180	87,923
Otsego	1	2	1	1	412	20	22	3	19	14,190
Putnam	2	6	4	2	1,134	33	35	0	35	30,208
Rensselaer	227	810	577	233	139,466	108	226	95	131	88,785
Rockland	64	224	157	67	40,002	385	607	190	417	225,663
St. Lawrence	77	250	170	80	43,221	210	329	92	237	114,904
Saratoga	0	0	0	0	0	44	44	2	42	38,972
Schenectady	221	872	644	228	140,072	203	330	99	231	127,382
Schoharie	3	11	8	3	1,074	25	25	0	25	17,672
Schuyler	8	25	16	9	3,768	25	39	11	28	10,496
Seneca	13	52	38	14	6,323	38	40	5	35	23,920
Steuben	72	243	168	75	34,780	125	160	36	124	62,286
Suffolk	689	2,539	1,818	721	1,133,895	1,677	2,024	286	1,738	1,335,467
Sullivan	55	189	135	54	36,385	85	120	28	92	65,729
Tioga	4	14	12	2	2,392	31	31	1	30	29,219
Tompkins	53	195	137	58	28,652	165	191	15	176	75,847
Ulster	147	473	329	144	94,690	337	385	37	348	202,126
Warren	2	4	4	0	895	31	34	3	31	25,909
Washington	2	6	4	2	1,230	31	36	3	33	33,608
Wayne	14	41	27	14	11,040	100	110	17	93	55,951
Westchester	1,001	3,243	2,221	1,022	975,512	1,453	1,607	123	1,484	913,098
Wyoming	5	23	17	6	3,313	24	25	2	23	12,681
Yates	2	11	9	2	2,108	17	17	0	17	12,407

Note: A breakout of Safety Net Assistance-FNP-Cash and Safety Net Assistance-FNP-Non-Cash data is not available for New York City.

* The Non-MOE category includes otherwise Temporary Assistance for Needy Families eligible or otherwise Safety Net Assistance MOE eligible non-disabled two-parent cases.

Table 16
SUPPLEMENTAL NUTRITION ASSISTANCE PROGRAM
Households, Persons and Value of Supplemental Nutrition Assistance Program Benefits by Local District
November 2014

Local District	Total			Temporary Assistance			Non-Temporary Assistance		
	Households	Persons	SNAP Benefits	Households	Persons	SNAP Benefits	Households	Persons	SNAP Benefits
New York State	1,671,667	3,057,644	\$430,248,769	656,151	980,382	\$151,376,340	1,015,516	2,077,262	\$278,872,429
New York City	966,467	1,732,347	255,181,584	437,583	663,814	102,758,218	528,884	1,068,533	152,423,366
Rest of State	705,200	1,325,297	175,067,185	218,568	316,568	48,618,122	486,632	1,008,729	126,449,063
Albany	19,634	36,704	4,844,606	6,054	8,828	1,359,097	13,580	27,876	3,485,509
Allegany	3,444	6,599	784,881	1,179	1,581	245,909	2,265	5,018	538,972
Broome	16,783	30,927	4,055,349	5,929	8,529	1,374,967	10,854	22,398	2,680,382
Cattaraugus	6,458	12,644	1,542,332	1,650	1,981	320,380	4,808	10,663	1,221,952
Cayuga	5,605	10,822	1,358,109	1,437	1,985	311,962	4,168	8,837	1,046,147
Chautauqua	14,155	27,359	3,573,414	4,236	6,783	1,040,039	9,919	20,576	2,533,375
Chemung	8,105	15,713	2,053,621	2,143	2,618	419,799	5,962	13,095	1,633,822
Chenango	4,009	7,797	962,304	1,010	1,277	193,701	2,999	6,520	768,603
Clinton	6,881	11,913	1,494,931	2,190	2,545	408,376	4,691	9,368	1,086,555
Columbia	3,765	6,543	847,253	1,246	1,637	257,163	2,519	4,906	590,090
Cortland	3,820	7,004	877,510	1,090	1,433	226,490	2,730	5,571	651,020
Delaware	3,329	6,616	804,261	825	961	142,785	2,504	5,655	661,476
Dutchess	13,401	24,045	3,225,290	3,580	4,437	690,145	9,821	19,608	2,535,145
Erie	84,403	157,891	20,941,973	27,100	42,466	6,566,832	57,303	115,425	14,375,141
Essex	2,103	3,772	470,962	687	764	120,643	1,416	3,008	350,319
Franklin	4,037	7,380	959,369	1,406	1,774	280,202	2,631	5,606	679,167
Fulton	5,048	9,455	1,191,783	1,299	1,432	237,172	3,749	8,023	954,611
Genesee	3,280	6,100	748,317	867	1,092	172,771	2,413	5,008	575,546
Greene	3,309	5,815	771,401	1,095	1,478	230,448	2,214	4,337	540,953
Hamilton	250	439	55,199	45	52	8,852	205	387	46,347
Herkimer	5,547	10,540	1,324,142	1,234	1,546	256,861	4,313	8,994	1,067,281
Jefferson	8,122	15,378	1,960,974	2,340	2,989	477,531	5,782	12,389	1,483,443
Lewis	1,817	3,572	405,428	410	497	75,314	1,407	3,075	330,114
Livingston	3,961	7,406	946,646	1,215	1,808	287,659	2,746	5,598	658,987
Madison	4,616	9,096	1,172,513	1,014	1,259	201,915	3,602	7,837	970,598
Monroe	66,143	121,946	16,633,317	25,416	39,897	6,147,277	40,727	82,049	10,486,040
Montgomery	4,737	9,768	1,253,809	1,386	2,042	313,685	3,351	7,726	940,124
Nassau	41,688	67,508	9,113,209	16,170	22,342	3,392,147	25,518	45,166	5,721,062
Niagara	18,136	32,864	4,279,284	5,696	8,338	1,302,261	12,440	24,526	2,977,023
Oneida	20,437	41,270	5,302,896	7,357	12,580	1,874,086	13,080	28,690	3,428,810
Onondaga	38,563	74,277	9,727,114	12,019	19,395	2,939,675	26,544	54,882	6,787,439
Ontario	5,743	10,440	1,316,653	1,575	2,054	331,864	4,168	8,386	984,789
Orange	20,654	48,303	6,359,018	5,674	8,520	1,250,698	14,980	39,783	5,108,320
Orleans	3,263	6,290	772,063	1,009	1,469	230,200	2,254	4,821	541,863
Oswego	9,614	20,036	2,543,608	2,759	4,348	674,369	6,855	15,688	1,869,239
Otsego	3,275	6,106	752,747	812	885	142,426	2,463	5,221	610,321
Putnam	1,757	2,759	357,698	538	587	88,114	1,219	2,172	269,584
Rensselaer	9,302	18,667	2,359,897	3,171	5,214	758,946	6,131	13,453	1,600,951
Rockland	17,251	47,575	6,285,266	3,885	5,253	815,462	13,366	42,322	5,469,804
St. Lawrence	8,500	16,714	2,070,302	2,850	3,928	604,292	5,650	12,786	1,466,010
Saratoga	8,954	15,884	1,982,277	1,875	2,051	334,797	7,079	13,833	1,647,480
Schenectady	13,418	25,406	3,436,201	4,398	6,616	1,008,290	9,020	18,790	2,427,911
Schoharie	2,021	3,776	479,566	521	637	101,145	1,500	3,139	378,421
Schuyler	1,277	2,528	297,615	333	498	77,076	944	2,030	220,539
Seneca	1,866	3,553	455,501	537	742	113,036	1,329	2,811	342,465
Steuben	6,117	12,270	1,448,413	1,889	2,670	400,136	4,228	9,600	1,048,277
Suffolk	75,086	129,074	18,107,380	20,170	27,544	4,184,804	54,916	101,530	13,922,576
Sullivan	5,989	11,939	1,611,692	1,767	2,280	350,704	4,222	9,659	1,260,988
Tioga	3,164	6,420	759,818	740	909	142,155	2,424	5,511	617,663
Tompkins	5,195	9,150	1,188,368	1,497	1,956	308,825	3,698	7,194	879,543
Ulster	12,124	21,430	2,885,135	4,104	5,821	911,864	8,020	15,609	1,973,271
Warren	4,076	7,372	911,922	1,094	1,239	200,481	2,982	6,133	711,441
Washington	4,019	7,664	934,681	979	1,158	185,731	3,040	6,506	748,950
Wayne	5,691	10,690	1,318,548	1,563	1,910	309,048	4,128	8,780	1,009,500
Westchester	48,106	86,057	12,050,309	14,725	20,988	3,068,927	33,381	65,069	8,981,382
Wyoming	1,759	3,356	387,938	467	576	91,023	1,292	2,780	296,915
Yates	1,393	2,675	312,372	311	369	57,565	1,082	2,306	254,807

Note: Supplemental Nutrition Assistance Program households containing only Supplemental Security Income recipients or a mix of Temporary Assistance and Supplemental Security Income recipients are counted as Temporary Assistance.

Table 17
SUPPLEMENTAL SECURITY INCOME
 Recipients, Total Program Expenditures and Federal and State Shares, by Local District
 November 2014

Local District	Recipients	Expenditures		
		Total	Federal	State
New York State*	703,156	\$411,145,841	\$360,063,598	\$51,082,243
New York City	426,989	252,705,546	222,962,322	29,743,224
Rest of State	271,618	156,315,284	135,573,875	20,741,409
Albany	7,442	4,264,066	3,749,298	514,768
Allegany	1,592	926,268	813,370	112,898
Broome	7,272	4,279,025	3,823,541	455,484
Cattaraugus	2,623	1,438,852	1,257,197	181,655
Cayuga	1,934	1,077,526	915,981	161,545
Chautauqua	5,108	2,934,358	2,572,332	362,026
Chemung	3,565	1,952,066	1,703,519	248,547
Chenango	1,632	913,017	812,850	100,167
Clinton	3,111	1,696,805	1,473,852	222,953
Columbia	1,661	1,023,549	858,642	164,907
Cortland	1,329	720,872	625,270	95,602
Delaware	1,304	704,859	601,868	102,991
Dutchess	5,863	3,403,835	2,787,160	616,675
Erie	30,038	17,715,353	15,580,550	2,134,803
Essex	1,074	597,175	474,410	122,765
Franklin	1,799	1,038,433	884,784	153,649
Fulton	2,168	1,248,435	1,059,259	189,176
Genesee	1,270	731,765	618,583	113,182
Greene	1,515	843,779	736,077	107,702
Hamilton	63	28,720	25,155	3,565
Herkimer	1,773	960,970	834,904	126,066
Jefferson	2,978	1,630,054	1,400,508	229,546
Lewis	644	331,504	291,511	39,993
Livingston	1,284	726,134	651,453	74,681
Madison	1,462	837,770	736,408	101,362
Monroe	27,148	16,579,490	14,702,743	1,876,747
Montgomery	2,020	1,139,648	988,801	150,847
Nassau	18,367	10,106,004	8,642,723	1,463,281
Niagara	6,339	3,716,799	3,249,240	467,559
Oneida	8,724	5,082,508	4,501,362	581,146
Onondaga	15,165	9,162,681	8,198,442	964,239
Ontario	1,993	1,087,424	953,498	133,926
Orange	7,329	4,217,072	3,642,458	574,614
Orleans	1,031	573,516	506,324	67,192
Oswego	3,542	2,046,674	1,857,314	189,360
Otsego	1,469	821,365	684,923	136,442
Putnam	904	492,566	406,722	85,844
Rensselaer	4,709	2,791,252	2,408,472	382,780
Rockland	5,437	3,183,146	2,465,590	717,556
St. Lawrence	3,994	2,204,064	1,948,513	255,551
Saratoga	3,154	1,766,098	1,546,411	219,687
Schenectady	5,832	3,448,755	3,058,490	390,265
Schoharie	765	459,386	386,432	72,954
Schuyler	482	264,530	215,384	49,146
Seneca	804	442,840	383,885	58,955
Steuben	3,208	1,756,380	1,557,284	199,096
Suffolk	22,666	12,820,208	10,758,999	2,061,209
Sullivan	2,788	1,583,537	1,298,841	284,696
Tioga	1,271	703,692	623,595	80,097
Tompkins	1,682	964,800	828,274	136,526
Ulster	4,484	2,574,641	2,192,019	382,622
Warren	1,757	925,118	793,911	131,207
Washington	1,696	953,067	830,949	122,118
Wayne	2,300	1,294,829	1,149,584	145,245
Westchester	18,798	10,426,005	8,893,682	1,532,323
Wyoming	699	380,648	334,228	46,420
Yates	557	321,351	276,300	45,051
Mental Hygiene	4,549	2,125,011	1,527,401	597,610

* Only New York State includes Mental Hygiene

Table 18
SUPPLEMENTAL SECURITY INCOME
 Recipients by Living Arrangement and Location
 November 2014

Living Arrangement	New York State	New York City	Rest of State	Mental Hygiene
Living Alone	352,611	231,164	121,445	2
Living With Others	268,338	154,930	113,400	8
Living in Household of Another	28,275	16,920	11,352	3
Congregate Care Level 1	2,387	284	507	1,596
Congregate Care Level 2	22,490	8,706	13,219	565
Congregate Care Level 3	11,900	6,070	5,830	0
Title XIX Institution	12,373	7,508	4,127	738
Other*	4,782	1,522	1,738	1,522
Total	703,156	427,104	271,618	4,434

Table 19
SUPPLEMENTAL SECURITY INCOME
 Recipients by Living Arrangement and Category of Assistance
 November 2014

Living Arrangement	Total	Category of Assistance		
		Aged	Blind	Disabled
Living Alone	352,611	100,305	1,330	250,976
Living With Others	268,338	21,318	1,163	245,857
Living in Household of Another	28,275	8,025	193	20,057
Congregate Care Level 1	2,387	112	14	2,261
Congregate Care Level 2	22,490	785	101	21,604
Congregate Care Level 3	11,900	4,629	35	7,236
Title XIX Institution & Other*	17,155	2,403	90	14,662
Total	703,156	137,577	2,926	562,653

* "Other" includes recipients either a) residing in a private medical facility and Medicaid is paying for less than 50% of the cost of care, b) residing in certain publicly operated residential facilities serving 16 or fewer residents, or c) residing in a public emergency shelter for six calendar months during a nine month period. Such cases receive no state Supplemental Security Income supplement.

Table 20
CHILD SUPPORT COLLECTIONS (IV-D)
November 2014

Local District	Total	Current Assistance	Former Assistance	Never Assistance
New York State	\$135,430,517.10	\$5,020,362.90	\$64,717,734.01	\$65,692,420.22
New York City	55,350,681.21	2,331,987.88	27,668,560.09	25,350,133.24
Rest of State	80,079,835.92	2,688,375.02	37,049,173.92	40,342,286.98
Albany	2,114,483.34	60,346.40	857,879.79	1,196,257.15
Allegany	414,608.18	24,295.56	258,636.94	131,675.68
Broome	1,233,289.47	80,064.03	629,665.67	523,559.77
Cattaraugus	751,300.54	29,627.25	428,855.94	292,817.35
Cayuga	708,294.72	35,964.79	430,791.85	241,538.08
Chautauqua	969,257.55	61,321.64	603,275.11	304,660.80
Chemung	660,862.62	23,053.69	402,740.84	235,068.09
Chenango	370,721.59	11,149.22	211,646.25	147,926.12
Clinton	743,591.79	45,099.93	356,645.42	341,846.44
Columbia	436,384.99	15,634.88	223,817.90	196,932.21
Cortland	372,453.59	17,132.65	205,001.19	150,319.75
Delaware	331,955.08	18,364.45	197,626.18	115,964.45
Dutchess	2,330,229.03	37,601.15	824,063.50	1,468,564.38
Erie	5,566,255.85	254,234.02	3,020,033.38	2,291,988.45
Essex	263,641.19	12,631.07	133,497.60	117,512.52
Franklin	420,932.84	12,519.93	212,584.57	195,828.34
Fulton	484,453.53	11,599.96	316,835.52	156,018.05
Genesee	456,413.04	11,577.11	239,826.55	205,009.38
Greene	371,307.95	11,881.62	179,553.23	179,873.10
Hamilton	20,483.70	249.90	13,122.82	7,110.98
Herkimer	438,919.83	17,822.87	246,175.69	174,921.27
Jefferson	1,206,272.21	35,713.55	479,830.31	690,728.35
Lewis	304,469.88	6,240.34	191,373.38	106,856.16
Livingston	500,803.09	28,917.03	273,816.26	198,069.80
Madison	445,096.46	12,455.82	241,986.99	190,653.65
Monroe	5,057,507.76	247,618.12	2,569,445.11	2,240,444.53
Montgomery	432,120.45	30,643.22	265,772.01	135,705.22
Nassau	7,480,142.23	153,592.16	2,585,605.95	4,740,944.12
Niagara	1,377,417.58	73,790.53	827,241.10	476,385.95
Oneida	1,388,123.79	90,212.81	801,529.49	496,381.49
Onondaga	3,656,757.45	107,758.95	2,104,070.60	1,444,927.90
Ontario	881,832.58	34,279.54	437,665.05	409,887.99
Orange	3,083,827.22	89,923.05	1,101,668.76	1,892,235.41
Orleans	334,089.30	16,145.27	192,387.93	125,556.10
Oswego	1,057,967.61	53,828.88	625,495.14	378,643.59
Otsego	361,866.93	6,013.29	167,446.93	188,406.71
Putnam	605,862.18	4,982.59	179,224.46	421,655.13
Rensselaer	1,467,176.82	68,840.25	596,204.45	802,132.12
Rockland	2,096,359.70	40,881.08	784,385.39	1,271,093.23
St. Lawrence	907,092.02	34,146.76	567,434.76	305,510.50
Saratoga	1,560,733.61	15,972.62	645,356.29	899,404.70
Schenectady	1,280,556.01	35,158.87	548,722.39	696,674.75
Schoharie	282,901.12	8,199.60	157,499.15	117,202.37
Schuyler	152,088.28	5,770.37	101,654.59	44,663.32
Seneca	281,030.53	13,829.87	148,270.14	118,930.52
Steuben	794,241.22	26,079.60	497,341.22	270,820.40
Suffolk	12,308,038.69	277,255.41	5,277,687.37	6,753,095.91
Sullivan	629,155.37	24,149.12	320,552.31	284,453.94
Tioga	424,311.19	29,937.24	224,740.33	169,633.62
Tompkins	527,292.35	26,806.40	250,811.08	249,674.87
Ulster	1,371,919.37	70,280.23	679,203.67	622,435.47
Warren	688,834.32	17,860.09	324,371.63	346,602.60
Washington	614,051.38	18,375.75	323,057.39	272,618.24
Wayne	792,079.52	21,248.10	382,113.36	388,718.06
Westchester	5,728,918.39	154,269.47	1,936,117.72	3,638,531.20
Wyoming	389,922.05	10,900.78	159,652.29	219,368.98
Yates	149,136.84	4,126.14	87,162.98	57,847.72

Table 21
AGGREGATE CLAIMS
TOTAL TEMPORARY ASSISTANCE
Family Assistance and Safety Net Assistance
November 2014

Month	New York State			New York City			Rest of State		
	Recipients	Net Expenditures	Monthly Average Payment	Recipients	Net Expenditures	Monthly Average Payment	Recipients	Net Expenditures	Monthly Average Payment
December 2012	581,005	\$302,255,608	\$520.23	356,465	\$229,721,378	\$644.44	224,540	\$72,534,230	\$323.03
January 2013	585,685	\$238,536,446	\$407.28	359,214	\$171,039,712	\$476.15	226,471	\$67,496,734	\$298.04
February 2013	584,874	\$226,399,716	\$387.09	357,200	\$158,355,307	\$443.32	227,674	\$68,044,409	\$298.87
March 2013	585,762	\$218,825,901	\$373.57	357,234	\$150,189,997	\$420.42	228,528	\$68,635,904	\$300.34
April 2013	589,725	\$229,924,511	\$389.88	359,652	\$158,688,921	\$441.23	230,073	\$71,235,590	\$309.62
May 2013	587,316	\$232,005,475	\$395.03	356,604	\$159,988,278	\$448.64	230,712	\$72,017,197	\$312.15
June 2013	580,109	\$226,898,703	\$391.13	352,026	\$158,719,731	\$450.88	228,083	\$68,178,972	\$298.92
July 2013	576,355	\$211,426,179	\$366.83	347,892	\$143,454,205	\$412.35	228,463	\$67,971,974	\$297.52
August 2013	573,835	\$210,360,299	\$366.59	345,020	\$142,617,183	\$413.36	228,815	\$67,743,116	\$296.06
September 2013	569,174	\$227,485,267	\$399.68	341,812	\$160,904,569	\$470.74	227,362	\$66,580,698	\$292.84
October 2013	573,292	\$222,891,580	\$388.79	342,337	\$153,692,785	\$448.95	230,955	\$69,198,795	\$299.62
November 2013	568,983	\$218,665,959	\$384.31	340,896	\$151,876,636	\$445.52	228,087	\$66,789,323	\$292.82
December 2013	566,424	\$284,303,969	\$501.93	339,513	\$209,886,676	\$618.20	226,911	\$74,417,293	\$327.96
January 2014	560,991	\$217,920,198	\$388.46	333,708	\$150,620,722	\$451.35	227,283	\$67,299,476	\$296.10
February 2014	561,525	\$210,100,410	\$374.16	333,162	\$140,749,161	\$422.46	228,363	\$69,351,249	\$303.69
March 2014	566,456	\$228,183,381	\$402.83	334,732	\$155,317,544	\$464.01	231,724	\$72,865,837	\$314.45
April 2014	565,463	\$233,259,990	\$412.51	332,074	\$158,003,253	\$475.81	233,389	\$75,256,737	\$322.45
May 2014	564,612	\$219,692,156	\$389.10	330,872	\$144,710,332	\$437.36	233,740	\$74,981,824	\$320.79
June 2014	563,201	\$223,560,059	\$396.95	331,315	\$151,506,837	\$457.29	231,886	\$72,053,222	\$310.73
July 2014	562,676	\$217,050,586	\$385.75	331,407	\$147,863,357	\$446.17	231,269	\$69,187,229	\$299.16
August 2014	565,719	\$204,112,783	\$360.80	336,383	\$134,766,087	\$400.63	229,336	\$69,346,696	\$302.38
September 2014	567,809	\$227,445,210	\$400.57	339,380	\$158,551,814	\$467.18	228,429	\$68,893,396	\$301.60
October 2014	571,842	\$243,203,161	\$425.30	339,804	\$170,327,854	\$501.25	232,038	\$72,875,307	\$314.07
November 2014	566,688	\$205,097,001	\$361.92	341,498	\$142,210,519	\$416.43	225,190	\$62,886,482	\$279.26

Note: Data pursuant to a New York State Legislative mandate S. 6057-B/A. 9557-B, Chapter 57, L. 2004.

Based on local district claims submitted on claims Schedules A and C. Includes reimbursable expenditures for basic assistance, rent supplements, family shelters, domestic violence shelters, security deposits, transitional services, diversion transportation, diversion payments, and other non-assistance. These claims are net of cancellations and refunds, and include any reconciliations and supplemental claims applied to the month after initial expenditure reporting is done. Thus, these data differ from the expenditure data presented elsewhere in this document, which are derived from original payment issuance activity during the month, net of cancellations and refunds in that month.

District claiming activity for recent months is generally not complete before the statutorily required due date for this report. Thus, claims for recent months may appear substantially below those for earlier months. Claims tables in future months of this report will continue to include the historical periods above, adjusted for claiming activity occurring subsequent to this report.

Table 22
AGGREGATE CLAIMS
FEDERALLY PARTICIPATING - TANF
Family Assistance-FP and Safety Net Assistance-FP
November 2014

Month	New York State			New York City			Rest of State		
	Recipients	Net Expenditures	Monthly Average Payment	Recipients	Net Expenditures	Monthly Average Payment	Recipients	Net Expenditures	Monthly Average Payment
December 2012	263,831	\$162,329,567	\$615.28	143,558	\$124,886,770	\$869.94	120,273	\$37,442,797	\$311.32
January 2013	262,170	\$108,274,130	\$412.99	141,976	\$74,803,776	\$526.88	120,194	\$33,470,354	\$278.47
February 2013	261,491	\$98,041,269	\$374.93	141,314	\$64,505,287	\$456.47	120,177	\$33,535,982	\$279.05
March 2013	259,524	\$103,364,886	\$398.29	139,783	\$69,652,596	\$498.29	119,741	\$33,712,290	\$281.54
April 2013	260,660	\$101,492,686	\$389.37	140,974	\$66,368,426	\$470.78	119,686	\$35,124,260	\$293.47
May 2013	259,401	\$99,347,713	\$382.99	138,701	\$63,963,986	\$461.16	120,700	\$35,383,727	\$293.15
June 2013	266,926	\$105,715,334	\$396.05	147,058	\$71,922,193	\$489.07	119,868	\$33,793,141	\$281.92
July 2013	264,767	\$90,319,986	\$341.13	144,851	\$57,077,984	\$394.05	119,916	\$33,242,002	\$277.21
August 2013	265,230	\$89,152,840	\$336.13	144,486	\$55,672,931	\$385.32	120,744	\$33,479,909	\$277.28
September 2013	263,064	\$105,076,551	\$399.43	142,765	\$71,623,613	\$501.69	120,299	\$33,452,938	\$278.08
October 2013	265,039	\$97,345,794	\$367.29	143,191	\$62,967,599	\$439.75	121,848	\$34,378,195	\$282.14
November 2013	261,958	\$96,127,899	\$366.96	141,744	\$63,281,911	\$446.45	120,214	\$32,845,988	\$273.23
December 2013	260,468	\$134,680,423	\$517.07	141,437	\$97,225,183	\$687.41	119,031	\$37,455,240	\$314.67
January 2014	256,124	\$95,355,999	\$372.30	137,459	\$62,390,603	\$453.89	118,665	\$32,965,396	\$277.80
February 2014	255,541	\$89,422,412	\$349.93	136,833	\$56,115,950	\$410.11	118,708	\$33,306,462	\$280.57
March 2014	255,898	\$100,889,135	\$394.26	136,966	\$65,654,316	\$479.35	118,932	\$35,234,819	\$296.26
April 2014	253,936	\$100,956,353	\$397.57	134,985	\$64,926,898	\$480.99	118,951	\$36,029,455	\$302.89
May 2014	253,505	\$92,440,031	\$364.65	134,113	\$57,980,291	\$432.32	119,392	\$34,459,740	\$288.63
June 2014	253,465	\$101,553,766	\$400.66	134,148	\$67,129,170	\$500.41	119,317	\$34,424,596	\$288.51
July 2014	252,643	\$88,882,394	\$351.81	133,462	\$55,599,258	\$416.59	119,181	\$33,283,136	\$279.27
August 2014	254,875	\$83,741,076	\$328.56	136,240	\$50,378,086	\$369.77	118,635	\$33,362,990	\$281.22
September 2014	254,656	\$98,796,691	\$387.96	136,630	\$65,143,997	\$476.79	118,026	\$33,652,694	\$285.13
October 2014	255,720	\$104,674,976	\$409.33	136,355	\$69,707,487	\$511.22	119,365	\$34,967,489	\$292.95
November 2014	255,842	\$85,627,091	\$334.69	139,293	\$54,977,009	\$394.69	116,549	\$30,650,082	\$262.98

Note: Data pursuant to a New York State Legislative mandate S. 6057-B/A. 9557-B, Chapter 57, L. 2004.

Based on local district claims submitted on claims Schedules A and C. Includes reimbursable expenditures for basic assistance, rent supplements, family shelters, domestic violence shelters, security deposits, transitional services, diversion transportation, diversion payments, and other non-assistance. These claims are net of cancellations and refunds, and include any reconciliations and supplemental claims applied to the month after initial expenditure reporting is done. Thus, these data differ from the expenditure data presented elsewhere in this document, which are derived from original payment issuance activity during the month, net of cancellations and refunds in that month.

District claiming activity for recent months is generally not complete before the statutorily required due date for this report. Thus, claims for recent months may appear substantially below those for earlier months. Claims tables in future months of this report will continue to include the historical periods above, adjusted for claiming activity occurring subsequent to this report.

Table 23
AGGREGATE CLAIMS
FEDERALLY NON-PARTICIPATING
Safety Net Assistance-FNP Maintenance of Effort
November 2014

Month	New York State			New York City			Rest of State		
	Recipients	Net Expenditures	Monthly Average Payment	Recipients	Net Expenditures	Monthly Average Payment	Recipients	Net Expenditures	Monthly Average Payment
December 2012	123,529	\$36,495,635	\$295.44	87,237	\$28,275,393	\$324.12	36,292	\$8,220,242	\$226.50
January 2013	125,540	\$38,743,759	\$308.62	88,956	\$30,481,386	\$342.66	36,584	\$8,262,373	\$225.85
February 2013	124,851	\$36,130,991	\$289.39	88,079	\$27,528,668	\$312.55	36,772	\$8,602,323	\$233.94
March 2013	127,575	\$30,026,618	\$235.36	90,723	\$21,776,180	\$240.03	36,852	\$8,250,438	\$223.88
April 2013	127,116	\$38,705,045	\$304.49	90,049	\$29,825,647	\$331.22	37,067	\$8,879,398	\$239.55
May 2013	126,753	\$38,944,721	\$307.25	89,559	\$30,063,718	\$335.69	37,194	\$8,881,003	\$238.78
June 2013	116,556	\$31,079,711	\$266.65	79,424	\$23,033,165	\$290.00	37,132	\$8,046,546	\$216.70
July 2013	116,391	\$32,899,994	\$282.67	78,992	\$24,451,850	\$309.55	37,399	\$8,448,144	\$225.89
August 2013	117,690	\$30,713,124	\$260.97	80,021	\$22,284,105	\$278.48	37,669	\$8,429,019	\$223.77
September 2013	117,493	\$41,604,989	\$354.11	79,627	\$33,179,665	\$416.69	37,866	\$8,425,324	\$222.50
October 2013	116,490	\$35,690,808	\$306.39	78,167	\$26,775,317	\$342.54	38,323	\$8,915,491	\$232.64
November 2013	118,437	\$34,340,355	\$289.95	80,274	\$25,654,665	\$319.59	38,163	\$8,685,690	\$227.59
December 2013	117,452	\$51,946,222	\$442.28	78,754	\$42,551,530	\$540.31	38,698	\$9,394,692	\$242.77
January 2014	116,278	\$35,308,552	\$303.66	77,255	\$26,504,400	\$343.08	39,023	\$8,804,152	\$225.61
February 2014	116,505	\$31,251,811	\$268.24	77,327	\$22,124,863	\$286.12	39,178	\$9,126,948	\$232.96
March 2014	117,670	\$41,140,089	\$349.62	78,426	\$31,555,885	\$402.37	39,244	\$9,584,204	\$244.22
April 2014	114,869	\$37,590,471	\$327.25	75,862	\$27,432,360	\$361.61	39,007	\$10,158,111	\$260.42
May 2014	114,478	\$33,510,002	\$292.72	75,265	\$24,181,272	\$321.28	39,213	\$9,328,730	\$237.90
June 2014	114,786	\$39,007,843	\$339.83	75,107	\$29,713,919	\$395.62	39,679	\$9,293,924	\$234.23
July 2014	114,537	\$33,265,243	\$290.43	74,604	\$24,145,121	\$323.64	39,933	\$9,120,122	\$228.39
August 2014	116,548	\$29,348,374	\$251.81	77,266	\$20,625,986	\$266.95	39,282	\$8,722,388	\$222.05
September 2014	117,457	\$39,881,199	\$339.54	77,600	\$30,949,827	\$398.84	39,857	\$8,931,372	\$224.09
October 2014	117,954	\$36,923,686	\$313.03	77,641	\$27,254,967	\$351.04	40,313	\$9,668,719	\$239.84
November 2014	116,448	\$30,964,733	\$265.91	76,629	\$22,565,979	\$294.48	39,819	\$8,398,754	\$210.92

Note: Data pursuant to a New York State Legislative mandate S. 6057-B/A. 9557-B, Chapter 57, L. 2004.

Based on local district claims submitted on claims Schedules A and C. Includes reimbursable expenditures for basic assistance, rent supplements, family shelters, domestic violence shelters, security deposits, transitional services, diversion transportation, diversion payments, and other non-assistance. These claims are net of cancellations and refunds, and include any reconciliations and supplemental claims applied to the month after initial expenditure reporting is done. Thus, these data differ from the expenditure data presented elsewhere in this document, which are derived from original payment issuance activity during the month, net of cancellations and refunds in that month.

District claiming activity for recent months is generally not complete before the statutorily required due date for this report. Thus, claims for recent months may appear substantially below those for earlier months. Claims tables in future months of this report will continue to include the historical periods above, adjusted for claiming activity occurring subsequent to this report.

Table 24
AGGREGATE CLAIMS
FEDERALLY NON-PARTICIPATING
Safety Net Assistance-FNP and Family Assistance-FNP Non-Maintenance of Effort
November 2014

Month	New York State			New York City			Rest of State		
	Recipients	Net Expenditures	Monthly Average Payment	Recipients	Net Expenditures	Monthly Average Payment	Recipients	Net Expenditures	Monthly Average Payment
December 2012	193,645	\$103,430,406	\$534.12	125,670	\$76,559,215	\$609.21	67,975	\$26,871,191	\$395.31
January 2013	197,975	\$91,518,557	\$462.27	128,282	\$65,754,550	\$512.58	69,693	\$25,764,007	\$369.68
February 2013	198,532	\$92,227,456	\$464.55	127,807	\$66,321,352	\$518.92	70,725	\$25,906,104	\$366.29
March 2013	198,663	\$85,434,397	\$430.05	126,728	\$58,761,221	\$463.68	71,935	\$26,673,176	\$370.80
April 2013	201,949	\$89,726,780	\$444.30	128,629	\$62,494,848	\$485.85	73,320	\$27,231,932	\$371.41
May 2013	201,162	\$93,713,041	\$465.86	128,344	\$65,960,574	\$513.94	72,818	\$27,752,467	\$381.12
June 2013	196,627	\$90,103,658	\$458.25	125,544	\$63,764,373	\$507.90	71,083	\$26,339,285	\$370.54
July 2013	195,197	\$88,206,199	\$451.88	124,049	\$61,924,371	\$499.19	71,148	\$26,281,828	\$369.40
August 2013	190,915	\$90,494,335	\$474.00	120,513	\$64,660,147	\$536.54	70,402	\$25,834,188	\$366.95
September 2013	188,617	\$80,803,727	\$428.40	119,420	\$56,101,291	\$469.78	69,197	\$24,702,436	\$356.99
October 2013	191,763	\$89,854,978	\$468.57	120,979	\$63,949,869	\$528.60	70,784	\$25,905,109	\$365.97
November 2013	188,588	\$88,197,705	\$467.67	118,878	\$62,940,060	\$529.45	69,710	\$25,257,645	\$362.32
December 2013	188,504	\$97,677,324	\$518.17	119,322	\$70,109,963	\$587.57	69,182	\$27,567,361	\$398.48
January 2014	188,589	\$87,255,647	\$462.68	118,994	\$61,725,719	\$518.73	69,595	\$25,529,928	\$366.84
February 2014	189,479	\$89,426,187	\$471.96	119,002	\$62,508,348	\$525.27	70,477	\$26,917,839	\$381.94
March 2014	192,888	\$86,154,157	\$446.65	119,340	\$58,107,343	\$486.91	73,548	\$28,046,814	\$381.34
April 2014	196,658	\$94,713,166	\$481.61	121,227	\$65,643,995	\$541.50	75,431	\$29,069,171	\$385.37
May 2014	196,629	\$93,742,123	\$476.75	121,494	\$62,548,769	\$514.83	75,135	\$31,193,354	\$415.16
June 2014	194,950	\$82,998,450	\$425.74	122,060	\$54,663,748	\$447.84	72,890	\$28,334,702	\$388.73
July 2014	195,496	\$94,902,949	\$485.45	123,341	\$68,118,978	\$552.28	72,155	\$26,783,971	\$371.20
August 2014	194,296	\$91,023,333	\$468.48	122,877	\$63,762,015	\$518.91	71,419	\$27,261,318	\$381.71
September 2014	195,696	\$88,767,320	\$453.60	125,150	\$62,457,990	\$499.07	70,546	\$26,309,330	\$372.94
October 2014	198,168	\$101,604,499	\$512.72	125,808	\$73,365,400	\$583.15	72,360	\$28,239,099	\$390.26
November 2014	194,398	\$88,505,177	\$455.28	125,576	\$64,667,531	\$514.97	68,822	\$23,837,646	\$346.37

Note: Data pursuant to a New York State Legislative mandate S. 6057-B/A. 9557-B, Chapter 57, L. 2004.

Based on local district claims submitted on claims Schedules A and C. Includes reimbursable expenditures for basic assistance, rent supplements, family shelters, domestic violence shelters, security deposits, transitional services, diversion transportation, diversion payments, and other non-assistance. These claims are net of cancellations and refunds, and include any reconciliations and supplemental claims applied to the month after initial expenditure reporting is done. Thus, these data differ from the expenditure data presented elsewhere in this document, which are derived from original payment issuance activity during the month, net of cancellations and refunds in that month.

District claiming activity for recent months is generally not complete before the statutorily required due date for this report. Thus, claims for recent months may appear substantially below those for earlier months. Claims tables in future months of this report will continue to include the historical periods above, adjusted for claiming activity occurring subsequent to this report.

Table 25
HOME ENERGY ASSISTANCE PROGRAM*
Number and Dollar Amount of Benefits Authorized and Administrative Allocations - Federal Fiscal Year to Date
November 2014

Local District	Benefits Authorized		Administrative Allocations
	Number	Dollar Amount	
New York State	511,439	\$141,412,556	\$19,198,136
New York City	0	0	5,173,161
Rest of State	511,439	141,412,556	14,024,975
Albany	14,879	3,446,001	243,078
Allegany	2,860	1,173,584	138,945
Broome	12,862	3,794,994	321,348
Cattaraugus	6,363	2,318,960	230,836
Cayuga	4,161	1,505,340	146,043
Chautauqua	11,007	3,739,344	347,265
Chemung	6,318	1,588,673	136,616
Chenango	3,620	1,579,678	163,864
Clinton	6,013	2,817,164	282,493
Columbia	3,355	1,196,769	105,630
Cortland	3,018	990,588	106,439
Delaware	3,415	1,484,708	141,216
Dutchess	10,130	2,378,908	239,627
Erie	66,142	18,379,448	2,404,000
Essex	1,977	883,163	88,777
Franklin	3,872	1,726,743	190,923
Fulton	4,414	1,690,894	188,772
Genesee	2,820	847,462	89,110
Greene	3,133	1,284,406	133,895
Hamilton	287	125,184	12,167
Herkimer	5,116	1,868,310	176,938
Jefferson	6,626	2,315,205	219,402
Lewis	1,782	879,215	89,794
Livingston	3,241	1,215,369	112,426
Madison	3,455	1,281,779	149,048
Monroe	47,090	10,223,873	705,604
Montgomery	4,019	1,500,805	150,507
Nassau	21,715	2,985,202	243,040
Niagara	14,446	3,987,169	368,624
Oneida	17,008	5,422,659	584,020
Onondaga	27,560	6,989,114	538,547
Ontario	4,750	1,375,881	115,374
Orange	12,862	3,188,229	341,830
Orleans	2,381	1,011,113	100,913
Oswego	7,160	2,941,653	247,674
Otsego	3,109	1,318,162	152,763
Putnam	1,371	354,074	36,266
Rensselaer	7,045	1,972,567	191,282
Rockland	11,926	2,025,322	155,821
St. Lawrence	7,254	2,960,534	368,087
Saratoga	7,348	2,743,394	288,124
Schenectady	8,778	2,251,603	187,910
Schoharie	1,929	883,597	98,740
Schuyler	1,171	538,672	60,928
Seneca	1,545	491,632	60,002
Steuben	5,115	1,906,676	258,257
Suffolk	35,919	9,678,286	813,253
Sullivan	4,358	1,297,816	197,575
Tioga	2,776	1,231,549	127,020
Tompkins	4,044	1,021,925	96,438
Ulster	10,491	3,210,042	363,049
Warren	3,518	1,304,197	145,876
Washington	3,217	1,407,181	147,770
Wayne	4,696	1,692,725	118,205
Westchester	32,880	1,847,774	192,045
Wyoming	1,771	656,887	63,412
Yates	1,321	480,354	47,367

* Please Note: The 2015 Home Energy Assistance Program Federal Fiscal Year is October 1, 2014 through September 30, 2015.

Table 26
HOME ENERGY ASSISTANCE PROGRAM - NON-EMERGENCY*
Number, Total Dollar Amount and Average Dollar Amount of Benefits Authorized - Federal Fiscal Year to Date
November 2014

Local District	Autopay			Regular Non-Autopay		
	Benefits Authorized	Dollar Amount Authorized	Average Dollar Amount	Benefits Authorized	Dollar Amount Authorized	Average Dollar Amount
New York State	442,137	\$108,778,704	\$246	69,228	\$32,526,993	\$470
New York City	0	0	0	0	0	0
Rest of State	442,137	108,778,704	246	69,228	32,526,993	470
Albany	13,510	2,872,318	213	1,366	572,815	419
Allegany	2,225	856,135	385	627	302,820	483
Broome	10,714	2,837,083	265	2,144	954,382	445
Cattaraugus	4,831	1,616,736	335	1,526	699,800	459
Cayuga	3,422	1,145,103	335	738	360,077	488
Chautauqua	8,944	2,870,779	321	2,062	866,065	420
Chemung	5,265	1,157,371	220	1,051	427,927	407
Chenango	2,451	926,460	378	1,168	651,033	557
Clinton	4,715	2,072,556	440	1,295	743,549	574
Columbia	2,669	818,369	307	685	375,250	548
Cortland	2,442	721,389	295	576	269,199	467
Delaware	2,360	900,924	382	1,051	580,353	552
Dutchess	9,355	1,958,799	209	772	413,299	535
Erie	56,239	14,587,736	259	9,902	3,791,682	383
Essex	1,287	481,865	374	690	401,298	582
Franklin	2,806	1,104,917	394	1,065	621,353	583
Fulton	3,406	1,167,694	343	1,008	523,200	519
Genesee	2,417	665,531	275	403	181,931	451
Greene	2,239	784,565	350	891	495,761	556
Hamilton	181	62,774	347	106	62,410	589
Herkimer	3,860	1,256,552	326	1,256	611,758	487
Jefferson	5,617	1,819,315	324	1,009	495,890	491
Lewis	1,241	573,066	462	540	305,706	566
Livingston	2,658	937,469	353	583	277,900	477
Madison	2,807	939,112	335	647	339,667	525
Monroe	44,535	9,295,604	209	2,554	925,624	362
Montgomery	3,163	1,066,515	337	856	434,290	507
Nassau	20,009	2,235,818	112	1,706	749,384	439
Niagara	12,428	3,134,436	252	2,016	846,778	420
Oneida	13,649	3,866,133	283	3,359	1,556,526	463
Onondaga	24,158	5,645,215	234	3,400	1,343,551	395
Ontario	4,053	1,063,913	263	696	310,741	446
Orange	11,562	2,560,800	221	1,300	627,429	483
Orleans	1,742	698,000	401	637	306,784	482
Oswego	5,991	2,335,971	390	1,169	605,682	518
Otsego	2,263	846,323	374	846	471,839	558
Putnam	1,157	245,485	212	213	108,350	509
Rensselaer	6,148	1,516,193	247	897	456,374	509
Rockland	11,503	1,862,448	162	423	162,874	385
St. Lawrence	5,624	2,082,758	370	1,626	877,058	539
Saratoga	6,295	2,171,090	345	1,044	552,831	530
Schenectady	8,390	2,085,268	249	388	166,335	429
Schoharie	1,420	601,901	424	509	281,696	553
Schuyler	824	347,607	422	346	188,515	545
Seneca	1,338	377,559	282	207	114,073	551
Steuben	3,959	1,345,854	340	1,156	560,822	485
Suffolk	31,878	7,602,439	238	4,040	2,071,447	513
Sullivan	3,880	1,017,782	262	477	279,409	586
Tioga	2,154	900,037	418	622	331,512	533
Tompkins	3,657	840,256	230	387	181,669	469
Ulster	9,067	2,397,999	264	1,422	811,476	571
Warren	2,817	932,501	331	700	368,886	527
Washington	2,352	927,293	394	863	473,061	548
Wayne	3,967	1,347,038	340	729	345,687	474
Westchester	32,159	1,515,338	47	721	332,436	461
Wyoming	1,286	437,578	340	485	219,309	452
Yates	1,048	340,934	325	273	139,420	511

* Please Note: The 2015 Home Energy Assistance Program Federal Fiscal Year is October 1, 2014 through September 30, 2015.

Table 27
HOME ENERGY ASSISTANCE PROGRAM - EMERGENCY*
 Number, Total Dollar Amount and Average Dollar Amount of Benefits Authorized - Federal Fiscal Year to Date
 November 2014

Local District	Emergency			Furnace Replacement			Furnace Repair & Repair/Replacement Estimates		
	Benefits Authorized	Dollar Amount Authorized	Average Dollar Amount	Benefits Authorized	Dollar Amount Authorized	Average Dollar Amount	Benefits Authorized	Dollar Amount Authorized	Average Dollar Amount
New York State	0	\$0	\$0	28	\$89,342	\$3,191	46	\$17,517	\$381
New York City	0	0	0	0	0	0	0	0	0
Rest of State	0	0	0	28	89,342	3,191	46	17,517	381
Albany	0	0	0	0	0	0	3	868	289
Allegany	0	0	0	4	13,516	3,379	4	1,113	278
Broome	0	0	0	1	2,995	2,995	3	534	178
Cattaraugus	0	0	0	1	1,528	1,528	5	896	179
Cayuga	0	0	0	0	0	0	1	160	160
Chautauqua	0	0	0	0	0	0	1	2,500	2,500
Chemung	0	0	0	1	2,950	2,950	1	425	425
Chenango	0	0	0	0	0	0	1	2,185	2,185
Clinton	0	0	0	0	0	0	3	1,059	353
Columbia	0	0	0	1	3,150	3,150	0	0	0
Cortland	0	0	0	0	0	0	0	0	0
Delaware	0	0	0	1	2,797	2,797	3	634	211
Dutchess	0	0	0	1	6,500	6,500	2	310	155
Erie	0	0	0	0	0	0	1	30	30
Essex	0	0	0	0	0	0	0	0	0
Franklin	0	0	0	0	0	0	1	473	473
Fulton	0	0	0	0	0	0	0	0	0
Genesee	0	0	0	0	0	0	0	0	0
Greene	0	0	0	1	2,400	2,400	2	1,680	840
Hamilton	0	0	0	0	0	0	0	0	0
Herkimer	0	0	0	0	0	0	0	0	0
Jefferson	0	0	0	0	0	0	0	0	0
Lewis	0	0	0	0	0	0	1	443	443
Livingston	0	0	0	0	0	0	0	0	0
Madison	0	0	0	1	3,000	3,000	0	0	0
Monroe	0	0	0	1	2,645	2,645	0	0	0
Montgomery	0	0	0	0	0	0	0	0	0
Nassau	0	0	0	0	0	0	0	0	0
Niagara	0	0	0	1	5,650	5,650	1	305	305
Oneida	0	0	0	0	0	0	0	0	0
Onondaga	0	0	0	0	0	0	2	348	174
Ontario	0	0	0	0	0	0	1	1,227	1,227
Orange	0	0	0	0	0	0	0	0	0
Orleans	0	0	0	2	6,329	3,165	0	0	0
Oswego	0	0	0	0	0	0	0	0	0
Otsego	0	0	0	0	0	0	0	0	0
Putnam	0	0	0	0	0	0	1	239	239
Rensselaer	0	0	0	0	0	0	0	0	0
Rockland	0	0	0	0	0	0	0	0	0
St. Lawrence	0	0	0	0	0	0	4	718	179
Saratoga	0	0	0	7	19,295	2,756	2	178	89
Schenectady	0	0	0	0	0	0	0	0	0
Schoharie	0	0	0	0	0	0	0	0	0
Schuyler	0	0	0	1	2,550	2,550	0	0	0
Seneca	0	0	0	0	0	0	0	0	0
Steuben	0	0	0	0	0	0	0	0	0
Suffolk	0	0	0	1	4,400	4,400	0	0	0
Sullivan	0	0	0	0	0	0	1	625	625
Tioga	0	0	0	0	0	0	0	0	0
Tompkins	0	0	0	0	0	0	0	0	0
Ulster	0	0	0	0	0	0	2	567	284
Warren	0	0	0	1	2,810	2,810	0	0	0
Washington	0	0	0	2	6,827	3,414	0	0	0
Wayne	0	0	0	0	0	0	0	0	0
Westchester	0	0	0	0	0	0	0	0	0
Wyoming	0	0	0	0	0	0	0	0	0
Yates	0	0	0	0	0	0	0	0	0

* Please Note: The 2015 Home Energy Assistance Program Federal Fiscal Year is October 1, 2014 through September 30, 2015.

Table 28
FEDERAL ALL FAMILIES WORK PARTICIPATION RATES
TANF, Safety Net Assistance MOE and Combined TANF and Safety Net Assistance MOE
November 2014

Local District	Combined TANF and Safety Net Assistance MOE			TANF			Safety Net Assistance MOE		
	Rate	Numerator	Denominator	Rate	Numerator	Denominator	Rate	Numerator	Denominator
New York State*	31.9%	28,733	89,907	31.8%	18,633	58,576	32.2%	10,100	31,332
New York City*	33.1%	17,172	51,956	31.0%	9,737	31,561	36.5%	7,435	20,395
Rest of State	23.7%	8,162	34,378	22.7%	5,499	24,172	26.1%	2,663	10,206
Albany	22.9%	215	940	21.8%	145	666	25.5%	70	274
Allegany	18.1%	27	149	16.5%	19	115	23.5%	8	34
Broome	17.6%	180	1,020	17.5%	120	684	17.9%	60	336
Cattaraugus	26.5%	27	102	29.8%	25	84	11.1%	2	18
Cayuga	16.3%	39	240	14.6%	29	199	24.4%	10	41
Chautauqua	20.1%	182	904	21.1%	126	597	18.2%	56	307
Chemung	16.3%	24	147	15.4%	18	117	20.0%	6	30
Chenango	12.7%	14	110	11.1%	11	99	27.3%	3	11
Clinton	14.7%	24	163	17.2%	22	128	5.7%	2	35
Columbia	17.8%	28	157	17.4%	24	138	21.1%	4	19
Cortland	19.2%	30	156	18.5%	22	119	21.6%	8	37
Delaware	23.2%	13	56	24.1%	13	54	0.0%	0	2
Dutchess	9.5%	28	294	8.1%	17	211	13.3%	11	83
Erie	39.9%	2,027	5,076	38.0%	1,334	3,510	44.3%	693	1,566
Essex	24.0%	6	25	25.0%	6	24	0.0%	0	1
Franklin	13.6%	20	147	11.6%	13	112	20.0%	7	35
Fulton	41.7%	20	48	41.7%	20	48	N/A	0	0
Genesee	17.6%	15	85	13.3%	10	75	50.0%	5	10
Greene	42.6%	43	101	39.1%	27	69	50.0%	16	32
Hamilton	0.0%	0	3	0.0%	0	3	N/A	0	0
Herkimer	16.5%	22	133	14.0%	16	114	31.6%	6	19
Jefferson	13.9%	32	230	15.5%	31	200	3.3%	1	30
Lewis	5.9%	1	17	6.7%	1	15	0.0%	0	2
Livingston	14.6%	39	268	14.7%	33	224	13.6%	6	44
Madison	17.1%	18	105	20.5%	18	88	0.0%	0	17
Monroe	16.4%	958	5,840	15.4%	583	3,793	18.3%	375	2,047
Montgomery	24.6%	51	207	25.6%	45	176	19.4%	6	31
Nassau	29.6%	639	2,158	28.2%	392	1,389	32.1%	247	769
Niagara	17.5%	181	1,033	16.8%	125	742	19.2%	56	291
Oneida	20.0%	316	1,581	18.8%	221	1,173	23.3%	95	408
Onondaga	13.7%	323	2,358	13.3%	233	1,750	14.8%	90	608
Ontario	17.7%	35	198	17.5%	29	166	18.8%	6	32
Orange	27.0%	259	961	26.6%	160	602	27.6%	99	359
Orleans	14.8%	25	169	15.7%	19	121	12.5%	6	48
Oswego	11.5%	67	582	11.4%	56	493	12.4%	11	89
Otsego	0.0%	0	22	0.0%	0	21	0.0%	0	1
Putnam	35.3%	6	17	38.5%	5	13	25.0%	1	4
Rensselaer	20.6%	168	814	20.2%	122	605	22.0%	46	209
Rockland	26.8%	75	280	26.2%	56	214	28.8%	19	66
St. Lawrence	24.4%	91	373	23.5%	69	294	27.8%	22	79
Saratoga	25.5%	12	47	25.5%	12	47	N/A	0	0
Schenectady	16.7%	113	676	16.8%	80	476	16.5%	33	200
Schoharie	16.2%	6	37	14.7%	5	34	33.3%	1	3
Schuyler	15.4%	8	52	12.5%	5	40	25.0%	3	12
Seneca	27.8%	22	79	29.7%	19	64	20.0%	3	15
Steuben	30.1%	75	249	28.2%	51	181	35.3%	24	68
Suffolk	34.9%	840	2,408	33.9%	581	1,713	37.3%	259	695
Sullivan	17.0%	28	165	16.5%	19	115	18.0%	9	50
Tioga	21.7%	13	60	20.3%	12	59	100.0%	1	1
Tompkins	23.2%	45	194	21.1%	31	147	29.8%	14	47
Ulster	11.6%	74	637	12.3%	62	506	9.2%	12	131
Warren	15.0%	6	40	15.0%	6	40	N/A	0	0
Washington	23.0%	14	61	22.0%	13	59	50.0%	1	2
Wayne	16.3%	24	147	15.8%	21	133	21.4%	3	14
Westchester	27.7%	608	2,196	28.8%	363	1,259	26.1%	245	937
Wyoming	7.5%	3	40	2.9%	1	35	40.0%	2	5
Yates	14.3%	3	21	15.8%	3	19	0.0%	0	2

* Statewide and New York City participation rates are estimated from federal disaggregated reporting samples, which are the source of the rates used by the United States Department of Health and Human Services to determine if a state has met participation goals. Because the sample size is insufficient to permit rate estimates for non-New York City districts, rates for those districts are derived directly from automated systems data. Thus, Rest of State and New York City numerators and denominators will not sum to the statewide total. Estimates are from fourth quarter Federal Fiscal Year 2014 samples.

Table 29
WORK SANCTION STATUS BY PRESENCE IN FEDERAL ALL FAMILIES WORK PARTICIPATION CALCULATION
TANF, Safety Net Assistance MOE and Combined TANF and Safety Net Assistance MOE
November 2014

Local District	Combined TANF and Safety Net Assistance MOE		TANF		Safety Net Assistance MOE	
	Sanctioned in the Denominator	Sanctioned Removed From Denominator	Sanctioned in the Denominator	Sanctioned Removed From Denominator	Sanctioned in the Denominator	Sanctioned Removed From Denominator
New York State*	6,633	5,611	2,905	2,810	3,728	2,801
New York City*	3,506	3,818	1,537	1,983	1,969	1,835
Rest of State	2,932	1,374	1,504	946	1,428	428
Albany	74	31	35	20	39	11
Allegany	10	1	5	1	5	0
Broome	148	34	73	21	75	13
Cattaraugus	8	4	3	3	5	1
Cayuga	27	8	15	8	12	0
Chautauqua	58	28	24	22	34	6
Chemung	19	10	7	8	12	2
Chenango	7	3	3	2	4	1
Clinton	6	2	4	1	2	1
Columbia	29	14	23	10	6	4
Cortland	2	2	1	2	1	0
Delaware	0	2	0	2	0	0
Dutchess	8	8	6	4	2	4
Erie	280	165	145	110	135	55
Essex	5	2	5	2	0	0
Franklin	16	4	12	3	4	1
Fulton	3	1	3	1	0	0
Genesee	4	6	1	3	3	3
Greene	8	9	3	8	5	1
Hamilton	0	0	0	0	0	0
Herkimer	7	6	3	5	4	1
Jefferson	24	17	20	15	4	2
Lewis	0	2	0	2	0	0
Livingston	4	3	3	3	1	0
Madison	1	6	1	5	0	1
Monroe	541	304	235	195	306	109
Montgomery	15	16	11	14	4	2
Nassau	205	83	119	53	86	30
Niagara	128	42	58	37	70	5
Oneida	122	54	72	41	50	13
Onondaga	360	105	188	75	172	30
Ontario	4	5	2	4	2	1
Orange	108	44	51	28	57	16
Orleans	10	9	6	6	4	3
Oswego	37	21	25	17	12	4
Otsego	0	0	0	0	0	0
Putnam	2	1	2	1	0	0
Rensselaer	60	34	26	22	34	12
Rockland	43	11	32	11	11	0
St. Lawrence	41	22	20	18	21	4
Saratoga	0	1	0	1	0	0
Schenectady	173	55	97	37	76	18
Schoharie	1	4	0	4	1	0
Schuyler	2	0	2	0	0	0
Seneca	2	1	2	1	0	0
Steuben	10	7	7	5	3	2
Suffolk	132	88	65	54	67	34
Sullivan	28	1	17	1	11	0
Tioga	0	3	0	3	0	0
Tompkins	27	9	10	7	17	2
Ulster	39	30	23	24	16	6
Warren	3	0	3	0	0	0
Washington	2	2	2	2	0	0
Wayne	5	8	2	4	3	4
Westchester	81	44	31	18	50	26
Wyoming	3	1	1	1	2	0
Yates	0	1	0	1	0	0

* Statewide and New York City sanction rates are estimated from federal disaggregated reporting samples, which are the source of such data used by the United States Department of Health and Human Services to determine if a state has met participation goals. Because the sample size is insufficient to permit sanction estimates for non-New York City districts, data for those districts are derived directly from automated systems. Thus, Rest of State and New York City counts may not sum to the statewide total. This table uses a federal definition of sanction and includes only persons who are deemed a work eligible individual and are sanctioned for non-compliance for work or substance abuse requirements. Estimates are from fourth quarter Federal Fiscal Year 2014 samples.

Table 30
 TEMPORARY ASSISTANCE CASES WITH EARNED INCOME
 Cases, Average Gross Earned Income and Average Net Earned Income after Application of Disregards
 November 2014

Local District	TANF			Safety Net Assistance MOE			Safety Net Assistance Non-MOE		
	Cases	Average Gross Earned Income	Average Net Earned Income	Cases	Average Gross Earned Income	Average Net Earned Income	Cases	Average Gross Earned Income	Average Net Earned Income
New York State	16,034	\$941	\$440	11,048	\$969	\$448	9,158	\$1,216	\$722
New York City	10,406	999	472	8,128	990	458	6,321	1,343	838
Rest of State	5,628	833	380	2,920	908	418	2,837	932	464
Albany	150	821	372	96	856	391	83	1,220	576
Allegany	25	513	216	9	728	332	23	588	279
Broome	112	780	352	92	836	381	77	717	347
Cattaraugus	20	761	342	2	1,017	473	9	674	313
Cayuga	27	781	353	12	652	289	10	499	222
Chautauqua	143	792	365	71	698	313	71	767	379
Chemung	19	799	359	12	770	344	10	507	240
Chenango	16	736	329	6	798	361	14	537	271
Clinton	20	867	396	3	535	231	8	886	620
Columbia	29	909	425	2	350	133	11	866	448
Cortland	25	677	298	12	641	281	15	472	234
Delaware	13	629	280	0	0	0	6	273	126
Dutchess	38	925	441	16	1,029	481	10	777	457
Erie	653	832	378	456	951	439	546	1,071	509
Essex	6	920	423	1	737	330	2	277	114
Franklin	14	643	282	7	801	363	14	646	323
Fulton	10	821	373	0	0	0	3	577	347
Genesee	12	800	362	5	1,110	520	5	477	238
Greene	25	782	353	12	1,057	493	15	1,075	525
Hamilton	1	200	185	0	0	0	1	243	153
Herkimer	12	558	240	4	556	238	9	559	257
Jefferson	29	737	331	4	670	296	23	648	339
Lewis	2	448	183	1	260	87	1	163	73
Livingston	58	758	340	10	815	370	16	909	440
Madison	14	918	422	1	240	150	0	0	0
Monroe	742	797	361	567	896	411	307	851	423
Montgomery	43	827	376	14	930	428	17	1,128	532
Nassau	473	898	419	223	913	422	157	793	448
Niagara	161	771	347	74	874	409	62	761	356
Oneida	263	755	335	124	853	380	223	1,095	521
Onondaga	376	803	364	180	904	416	251	1,151	559
Ontario	53	793	359	13	952	439	15	760	369
Orange	208	925	426	137	936	432	73	1,002	492
Orleans	15	755	339	7	958	443	18	798	387
Oswego	72	744	336	15	752	339	31	774	363
Otsego	1	883	404	0	0	0	5	627	395
Putnam	6	759	341	1	921	424	4	359	269
Rensselaer	136	740	332	69	782	353	60	1,000	465
Rockland	172	913	421	25	982	435	68	1,067	525
St. Lawrence	57	657	289	21	684	303	65	585	281
Saratoga	8	854	391	0	0	0	3	1,019	634
Schenectady	111	854	390	62	926	426	49	1,017	524
Schoharie	11	715	319	1	1,618	780	7	587	301
Schuyler	12	634	278	8	942	435	12	710	316
Seneca	20	744	334	7	1,031	480	8	975	610
Steuben	49	783	354	22	829	377	17	639	346
Suffolk	523	973	458	255	1,068	506	215	984	562
Sullivan	25	704	313	12	929	428	8	666	438
Tioga	10	1,043	486	1	899	413	2	692	412
Tompkins	37	736	317	19	911	416	18	651	353
Ulster	103	734	328	39	752	342	69	674	339
Warren	4	865	395	0	0	0	1	235	145
Washington	12	864	395	2	956	442	3	368	168
Wayne	19	679	283	1	439	349	2	268	170
Westchester	427	901	413	186	947	438	77	835	437
Wyoming	2	585	253	1	1,432	685	2	318	159
Yates	4	971	449	0	0	0	6	663	391