



**Office of Temporary  
and Disability Assistance**

# **Temporary and Disability Assistance Statistics**

**December 2014**



---

# Temporary and Disability Assistance Statistics

## DECEMBER 2014

---

### Temporary Assistance

Temporary Assistance recipients totaled 573,328 in December 2014, increasing by 6,640 (+1.2%) from the previous month. Related expenditures totaled \$191,924,511 in November 2014, increasing by approximately \$14.9 million (+8.4%) over November 2014.

### Supplemental Nutrition Assistance Program

Supplemental Nutrition Assistance Program recipients totaled 3,075,720 in December 2014, increasing by 18,076 (+0.6%) from the previous month. Related expenditures totaled \$431,369,618 in December 2014, increasing by approximately \$1.1 million (+0.3%) over November 2014.

### Supplemental Security Income

Supplemental Security Income recipients (including Mental Hygiene) totaled 717,040 in December 2014, increasing by 13,884 (+2.0%) from the previous month. Related expenditures totaled \$413,666,178 in December 2014, increasing by approximately \$2.5 million (+0.6%) over November 2014.

Note: New York State's October 2014 administrative takeover of the State Supplement portion of the Supplemental Security Income (SSI) benefit precipitated systems changes that disrupted the pre-existing statistical reporting processes for the SSI program overall. This has resulted in overcounting program participants and possibly expenditures on the monthly reports from October 2014 to the present. The New York State Office of Information Technology Services is working on tracing and correcting the cause of this problem, but, until these adjustments are made, the SSI statistics contained in this report are included to fulfill statutory reporting requirements only and should not be used for trending or other purposes.

**The Calendar Year 2014 Annual Summary begins on page 32 of this issue.**

Date Issued January 30, 2015

# Table of Contents

## Ten Year Trend Graphs

Temporary Assistance Recipients	4
Supplemental Nutrition Assistance Program Recipients	4
Supplemental Security Income Recipients	4

## Temporary Assistance, SSI and SNAP Summary

<b>Table 1:</b>	Temporary Assistance, Family Assistance-FP, Safety Net Assistance, Supplemental Security Income and Supplemental Nutrition Assistance Program Cases by Region	5
<b>Table 2:</b>	Temporary Assistance, Family Assistance-FP, Safety Net Assistance, Supplemental Security Income and Supplemental Nutrition Assistance Program Recipients by Region	5
<b>Table 3:</b>	Temporary Assistance, Family Assistance-FP, Safety Net Assistance, Supplemental Security Income and Supplemental Nutrition Assistance Program Expenditures by Region	5

## Temporary Assistance by Program Area

<b>Table 4:</b>	Temporary Assistance Year to Year Monthly Comparison Cases, Recipients and Expenditures	6
<b>Table 5:</b>	Temporary Assistance Cases, Recipients, Children, Adults and Expenditures	7
<b>Table 6:</b>	Family Assistance-FP Cases, Recipients, Children, Adults and Expenditures	8
<b>Table 7:</b>	Safety Net Assistance Cases, Recipients, Children, Adults and Expenditures	9

## Temporary Assistance by Funding Source and Program Area

<b>Table 8:</b>	Temporary Assistance by Funding Source (Federally Participating and Federally Non-Participating) Cases, Recipients and Expenditures	10
<b>Table 9:</b>	Temporary Assistance for Needy Families-FP by Program (Family Assistance-FP and Safety Net Assistance-FP) Cases, Recipients, Children, Adults and Expenditures	11
<b>Table 10:</b>	Safety Net Assistance-FNP and Family Assistance-FNP Cases, Recipients, Children, Adults and Expenditures	12
<b>Table 11:</b>	Safety Net Assistance-FNP by Maintenance of Effort Status Cases, Recipients, Children, Adults and Expenditures	13
<b>Table 12:</b>	Safety Net Assistance-FNP-Cash Total Cases, Recipients, Children, Adults and Expenditures	14
<b>Table 13:</b>	Safety Net Assistance-FNP-Cash by Maintenance of Effort Status Cases, Recipients, Children, Adults and Expenditures	15
<b>Table 14:</b>	Safety Net Assistance-FNP-Non-Cash Total Cases, Recipients, Children, Adults and Expenditures	16
<b>Table 15:</b>	Safety Net Assistance-FNP-Non-Cash by Maintenance of Effort Status Cases, Recipients, Children, Adults and Expenditures	17

## Supplemental Nutrition Assistance Program

<b>Table 16:</b>	Supplemental Nutrition Assistance Program Households, Persons and Value of Supplemental Nutrition Assistance Program Benefits	18
------------------	---	----

## Supplemental Security Income

<b>Table 17:</b>	Supplemental Security Income Recipients, Total Program Expenditures and Federal and State Shares	19
<b>Table 18:</b>	Supplemental Security Income Recipients by Living Arrangement and Location	20
<b>Table 19:</b>	Supplemental Security Income Recipients by Living Arrangement and Category of Assistance	20

# Table of Contents

## Child Support

<b>Table 20:</b>	Child Support Collections (IV-D)	21
------------------	----------------------------------	----

## Aggregate Claims

<b>Table 21:</b>	Aggregate Claims - Total Temporary Assistance	22
<b>Table 22:</b>	Aggregate Claims - Federally Participating - TANF	23
<b>Table 23:</b>	Aggregate Claims - Federally Non-Participating Safety Net Assistance-FNP Maintenance of Effort	24
<b>Table 24:</b>	Aggregate Claims - Federally Non-Participating Safety Net Assistance-FNP and Family Assistance-FNP Maintenance of Effort	25

## Home Energy Assistance Program

<b>Table 25:</b>	Home Energy Assistance Program Number and Dollar Amount of Benefits Authorized and Administrative Allocations	26
<b>Table 26:</b>	Home Energy Assistance Program - Non-Emergency Number, Total Dollar Amount and Average Dollar Amount of Benefits Authorized	27
<b>Table 27:</b>	Home Energy Assistance Program - Emergency Number, Total Dollar Amount and Average Dollar Amount of Benefits Authorized	28

## Welfare to Work Statistical Tables

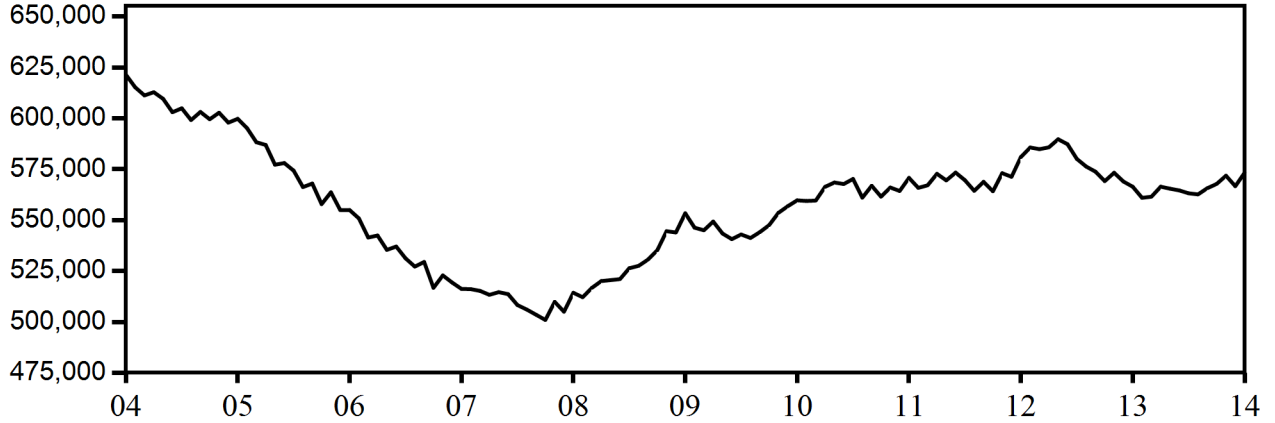
<b>Table 28:</b>	Federal All Families Work Participation Rates TANF, Safety Net Assistance MOE and Combined TANF and Safety Net Assistance MOE	29
<b>Table 29:</b>	Work Sanction Status by Presence in Federal All Families Work Participation Calculation TANF, Safety Net Assistance MOE and Combined TANF and Safety Net Assistance MOE	30
<b>Table 30:</b>	Temporary Assistance Cases with Earned Income Cases, Average Gross Earned Income and Average Net Earned Income after Application of Disregards	31

## 2014 Summary Tables

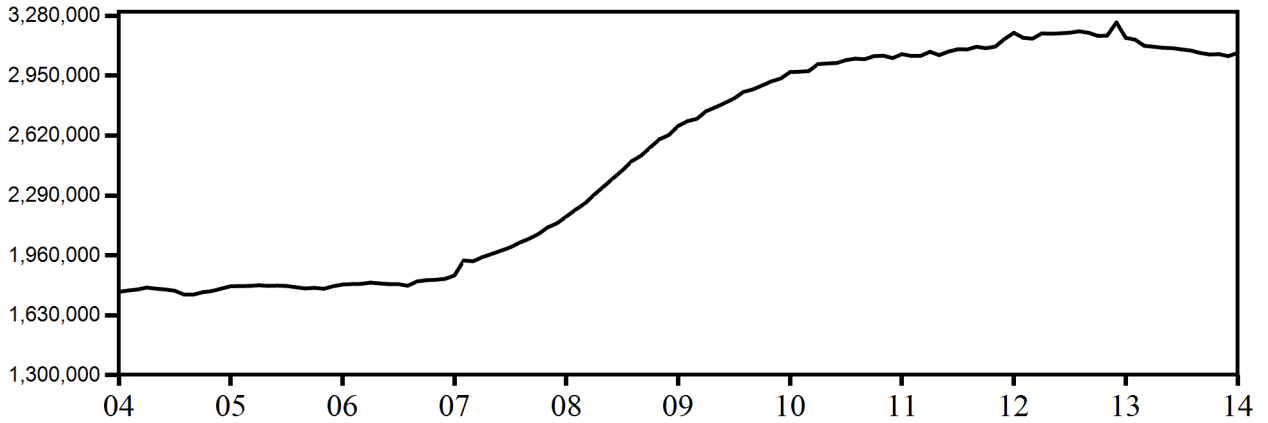
<b>Table A-1:</b>	Comparison of Monthly Average Cases and Recipients, and Annual Expenditures	33
<b>Table A-2:</b>	Temporary Assistance Year to Year Comparison by Local District	34
<b>Table A-3:</b>	Supplemental Nutrition Assistance Program Year to Year Comparison by Local District	35
<b>Table A-4:</b>	Supplemental Security Income Year to Year Comparison by Local District	36
<b>Table A-5:</b>	Temporary Assistance Monthly Average Cases, Recipients, Children and Adults, and Annual Expenditures	37
<b>Table A-6:</b>	Family Assistance-FP Monthly Average Cases, Recipients, Children and Adults, and Annual Expenditures	38
<b>Table A-7:</b>	Safety Net Assistance Monthly Average Cases, Recipients, Children and Adults, and Annual Expenditures	39
<b>Table A-8:</b>	Temporary Assistance by Funding Source Monthly Average Cases, Recipients, Children and Adults, and Annual Expenditures	40
<b>Table A-9:</b>	Safety Net Assistance-FNP by Case Category Monthly Average Cases, Recipients, Children and Adults, and Annual Expenditures	41
<b>Table A-10:</b>	Supplemental Nutrition Assistance Program Monthly Average Households and Persons, and Annual Expenditures	42
<b>Table A-11:</b>	Supplemental Security Income Monthly Average Recipients, Total Annual Program Expenditures and Federal and State Shares	43
<b>Table A-12:</b>	Child Support Collections (IV-D)	44

**NEW YORK STATE**  
**January 2005 - December 2014**  
**TEN YEAR TREND**

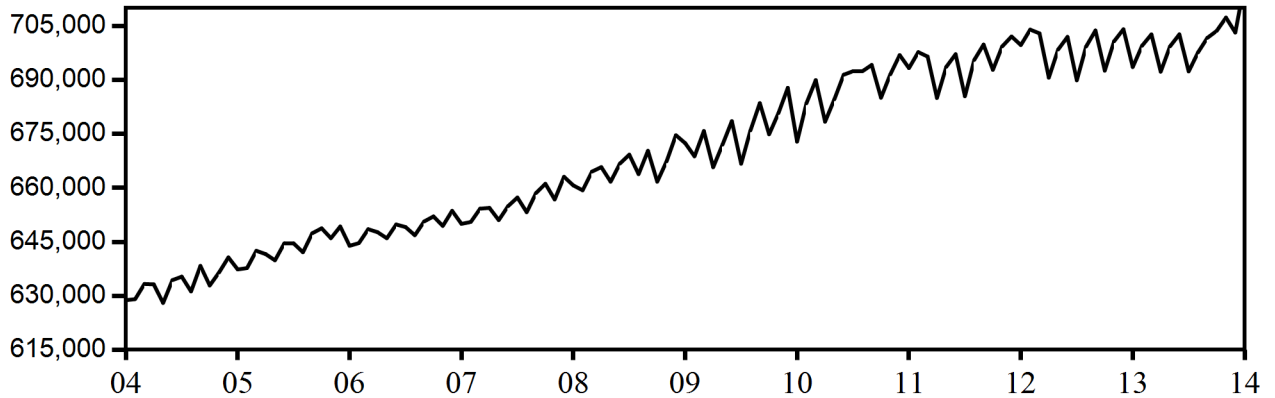
**Temporary Assistance Recipients**



**Supplemental Nutrition Assistance Program Recipients**



**Supplemental Security Income Recipients  
(Including Mental Hygiene)**



SELECTED SUMMARY PROGRAM DATA  
BY REGION

Table 1  
TEMPORARY AND DISABILITY ASSISTANCE CASES  
December 2014

Region	Cases				
	Temporary Assistance by Program			Supplemental Security Income	Supplemental Nutrition Assistance Program
	Total	Family Assistance-FP	Safety Net Assistance		
New York State	298,605	108,393	190,212	711,967	1,682,099
New York City	184,419	59,387	125,032	432,656	972,357
Rest of State	114,186	49,006	65,180	279,311	709,742

Table 2  
TEMPORARY AND DISABILITY ASSISTANCE RECIPIENTS  
December 2014

Region	Recipients				
	Temporary Assistance by Program			Supplemental Security Income	Supplemental Nutrition Assistance Program
	Total	Family Assistance-FP	Safety Net Assistance		
New York State	573,328	250,935	322,393	711,967	3,075,720
New York City	344,154	136,665	207,489	432,656	1,742,730
Rest of State	229,174	114,270	114,904	279,311	1,332,990

Table 3  
TEMPORARY AND DISABILITY ASSISTANCE EXPENDITURES  
December 2014

Region	Expenditures				
	Temporary Assistance by Program			Supplemental Security Income	Supplemental Nutrition Assistance Program
	Total	Family Assistance-FP	Safety Net Assistance		
New York State	\$191,924,511	\$70,516,766	\$121,407,745	\$411,444,371	\$431,369,618
New York City	114,576,032	36,080,018	78,496,014	253,354,510	255,417,953
Rest of State	77,348,479	34,436,748	42,911,731	158,089,861	175,951,665

Note: Supplemental Security Income data listed here do not include Mental Hygiene data. See Tables 17 - 19 for total Supplemental Security Income data.

Table 4  
**TEMPORARY ASSISTANCE**  
 Year to Year Monthly Comparison by Local District  
 Cases, Recipients and Expenditures  
 December 2014

Local District	December 2014			December 2013			December 2012		
	Cases	Recipients	Expenditures	Cases	Recipients	Expenditures	Cases	Recipients	Expenditures
New York State	298,605	573,328	\$191,924,511	294,694	566,424	\$183,182,513	302,912	581,005	\$188,195,856
New York City	184,419	344,154	114,576,032	182,291	339,513	110,168,748	190,905	356,465	116,416,102
Rest of State	114,186	229,174	77,348,479	112,403	226,911	73,013,765	112,007	224,540	71,779,754
Albany	2,799	6,184	1,729,450	2,991	6,584	2,152,339	2,910	6,451	1,950,376
Allegany	498	985	244,564	509	990	248,260	580	1,133	276,415
Broome	3,769	7,174	2,108,668	3,723	7,195	2,078,513	3,874	7,638	2,153,781
Cattaraugus	625	1,043	311,105	540	862	274,252	555	904	275,868
Cayuga	822	1,537	491,841	836	1,573	528,348	671	1,314	372,279
Chautauqua	2,773	5,840	1,468,371	2,640	5,818	1,404,546	2,688	5,858	1,445,437
Chemung	846	1,500	438,636	827	1,466	426,196	843	1,591	461,545
Chenango	487	874	243,594	381	673	193,765	423	749	222,787
Clinton	878	1,441	532,943	892	1,534	543,646	918	1,612	515,792
Columbia	547	1,037	326,066	529	1,016	297,693	537	1,019	315,110
Cortland	662	1,093	395,215	637	1,135	339,306	573	1,069	315,960
Delaware	287	516	153,407	295	494	150,198	293	503	152,840
Dutchess	1,377	2,566	1,139,785	1,393	2,542	1,045,408	1,521	2,880	1,110,132
Erie	15,330	33,478	8,287,861	14,179	31,038	7,335,030	13,453	28,945	7,038,615
Essex	138	224	54,751	131	224	66,798	133	230	87,047
Franklin	524	971	278,839	537	1,050	303,450	530	970	309,282
Fulton	336	537	180,898	340	580	194,676	346	634	189,298
Genesee	327	618	196,731	351	666	199,453	326	611	185,442
Greene	456	839	263,682	550	1,028	329,930	583	1,151	330,539
Hamilton	17	26	7,345	14	20	5,858	16	22	3,843
Herkimer	530	946	266,192	503	908	245,777	524	974	265,821
Jefferson	1,210	2,010	679,934	948	1,558	517,562	878	1,431	488,624
Lewis	129	209	67,534	120	194	64,496	118	196	66,396
Livingston	854	1,635	450,147	817	1,572	466,006	693	1,292	385,708
Madison	391	705	237,620	401	734	217,718	376	726	199,102
Monroe	15,442	32,048	8,656,179	16,253	33,248	8,803,823	16,236	32,869	8,961,713
Montgomery	568	1,361	311,959	560	1,312	319,244	566	1,316	348,411
Nassau	7,613	13,955	5,033,166	7,284	13,446	4,957,868	7,800	14,349	5,204,983
Niagara	3,293	6,414	1,536,977	3,289	6,393	1,597,322	3,213	6,136	1,595,982
Oneida	4,573	10,796	2,430,599	4,407	10,406	2,264,265	4,093	9,615	2,053,860
Onondaga	7,404	16,131	4,012,317	7,368	15,877	3,940,262	7,023	15,499	3,693,753
Ontario	910	1,541	539,021	819	1,436	467,512	799	1,424	428,833
Orange	2,886	6,158	2,197,756	3,138	6,764	2,381,104	3,256	7,056	2,571,879
Orleans	736	1,307	386,721	722	1,317	371,608	633	1,168	338,900
Oswego	1,722	3,674	917,798	1,676	3,530	919,169	1,505	3,094	788,796
Otsego	227	335	198,705	232	366	190,850	211	341	150,235
Putnam	145	206	123,372	133	183	94,685	107	147	85,329
Rensselaer	1,760	4,301	1,130,726	1,699	4,293	1,114,106	1,619	4,007	1,017,526
Rockland	1,537	2,984	981,160	1,664	3,264	1,006,729	1,738	3,423	1,062,301
St. Lawrence	1,370	2,664	697,918	1,258	2,544	653,285	1,212	2,342	675,334
Saratoga	411	647	235,903	414	607	268,464	387	547	247,709
Schenectady	1,986	4,408	1,298,124	1,984	4,334	1,251,438	1,732	3,780	1,041,205
Schoharie	196	337	124,724	215	370	120,754	161	265	100,245
Schuyler	212	403	124,541	236	440	140,610	220	391	130,091
Seneca	283	556	169,443	260	495	138,548	198	355	111,270
Steuben	1,007	1,870	519,311	971	1,883	565,852	950	1,861	512,906
Suffolk	10,627	19,408	13,084,796	9,938	18,672	11,161,931	10,840	19,852	10,668,006
Sullivan	613	1,261	348,610	877	1,802	501,296	1,068	2,227	689,241
Tioga	381	650	217,988	391	654	242,896	381	627	243,725
Tompkins	813	1,415	452,094	897	1,595	496,506	855	1,562	540,520
Ulster	2,225	4,132	1,483,936	2,115	4,035	1,418,723	2,144	4,067	1,440,437
Warren	245	402	196,450	271	461	207,170	219	348	161,054
Washington	373	620	277,964	345	581	248,699	423	704	332,603
Wayne	627	1,046	321,813	634	1,070	347,959	627	1,077	319,220
Westchester	7,030	13,543	8,567,889	6,908	13,475	6,997,815	7,096	13,617	6,964,991
Wyoming	193	342	96,900	207	358	106,407	187	345	95,858
Yates	166	271	118,440	154	246	87,641	146	226	84,799

Table 5  
**TEMPORARY ASSISTANCE**  
Cases, Recipients, Children, Adults and Expenditures by Local District  
December 2014

Local District	Temporary Assistance				
	Cases	Recipients	Children	Adults	Expenditures
New York State	298,605	573,328	301,043	272,285	\$191,924,511
New York City	184,419	344,154	171,545	172,609	114,576,032
Rest of State	114,186	229,174	129,498	99,676	77,348,479
Albany	2,799	6,184	3,788	2,396	1,729,450
Allegany	498	985	565	420	244,564
Broome	3,769	7,174	4,030	3,144	2,108,668
Cattaraugus	625	1,043	605	438	311,105
Cayuga	822	1,537	826	711	491,841
Chautauqua	2,773	5,840	3,335	2,505	1,468,371
Chemung	846	1,500	965	535	438,636
Chenango	487	874	498	376	243,594
Clinton	878	1,441	841	600	532,943
Columbia	547	1,037	559	478	326,066
Cortland	662	1,093	509	584	395,215
Delaware	287	516	314	202	153,407
Dutchess	1,377	2,566	1,625	941	1,139,785
Erie	15,330	33,478	19,284	14,194	8,287,861
Essex	138	224	133	91	54,751
Franklin	524	971	502	469	278,839
Fulton	336	537	314	223	180,898
Genesee	327	618	352	266	196,731
Greene	456	839	439	400	263,682
Hamilton	17	26	11	15	7,345
Herkimer	530	946	548	398	266,192
Jefferson	1,210	2,010	956	1,054	679,934
Lewis	129	209	128	81	67,534
Livingston	854	1,635	826	809	450,147
Madison	391	705	408	297	237,620
Monroe	15,442	32,048	18,139	13,909	8,656,179
Montgomery	568	1,361	884	477	311,959
Nassau	7,613	13,955	7,340	6,615	5,033,166
Niagara	3,293	6,414	3,519	2,895	1,536,977
Oneida	4,573	10,796	6,291	4,505	2,430,599
Onondaga	7,404	16,131	9,468	6,663	4,012,317
Ontario	910	1,541	812	729	539,021
Orange	2,886	6,158	3,659	2,499	2,197,756
Orleans	736	1,307	695	612	386,721
Oswego	1,722	3,674	2,057	1,617	917,798
Otsego	227	335	163	172	198,705
Putnam	145	206	97	109	123,372
Rensselaer	1,760	4,301	2,744	1,557	1,130,726
Rockland	1,537	2,984	1,755	1,229	981,160
St. Lawrence	1,370	2,664	1,393	1,271	697,918
Saratoga	411	647	421	226	235,903
Schenectady	1,986	4,408	2,762	1,646	1,298,124
Schoharie	196	337	197	140	124,724
Schuyler	212	403	202	201	124,541
Seneca	283	556	318	238	169,443
Steuben	1,007	1,870	1,025	845	519,311
Suffolk	10,627	19,408	9,742	9,666	13,084,796
Sullivan	613	1,261	862	399	348,610
Tioga	381	650	437	213	217,988
Tompkins	813	1,415	702	713	452,094
Ulster	2,225	4,132	2,124	2,008	1,483,936
Warren	245	402	232	170	196,450
Washington	373	620	374	246	277,964
Wayne	627	1,046	582	464	321,813
Westchester	7,030	13,543	7,777	5,766	8,567,889
Wyoming	193	342	204	138	96,900
Yates	166	271	160	111	118,440



Table 6  
**FAMILY ASSISTANCE-FP**  
Cases, Recipients, Children, Adults and Expenditures by Local District  
December 2014

Local District	Family Assistance-FP				
	Cases	Recipients	Children	Adults	Expenditures
New York State	108,393	250,935	186,055	64,880	\$70,516,766
New York City	59,387	136,665	101,534	35,131	36,080,018
Rest of State	49,006	114,270	84,521	29,749	34,436,748
Albany	1,376	3,219	2,375	844	801,521
Allegany	235	538	405	133	124,012
Broome	1,595	3,454	2,608	846	955,881
Cattaraugus	317	641	510	131	169,935
Cayuga	368	868	625	243	226,007
Chautauqua	1,261	2,958	2,123	835	712,543
Chemung	445	914	758	156	241,289
Chenango	240	523	402	121	138,173
Clinton	450	874	703	171	247,338
Columbia	256	604	438	166	142,295
Cortland	238	519	377	142	159,699
Delaware	160	349	281	68	86,642
Dutchess	684	1,457	1,183	274	585,880
Erie	6,578	15,995	11,599	4,396	3,787,968
Essex	73	142	116	26	25,881
Franklin	218	497	351	146	117,940
Fulton	169	340	281	59	92,265
Genesee	162	378	279	99	95,631
Greene	175	379	281	98	103,311
Hamilton	7	12	9	3	3,086
Herkimer	278	600	460	140	146,206
Jefferson	444	978	729	249	230,866
Lewis	69	137	113	24	34,685
Livingston	371	902	616	286	220,699
Madison	186	402	309	93	100,291
Monroe	6,222	14,964	10,791	4,173	3,862,045
Montgomery	362	939	699	240	196,917
Nassau	2,871	6,405	4,796	1,609	2,002,301
Niagara	1,381	3,134	2,278	856	698,251
Oneida	1,989	5,261	3,767	1,494	1,161,788
Onondaga	3,382	8,071	5,828	2,243	1,921,240
Ontario	407	848	645	203	231,095
Orange	1,251	2,982	2,242	740	955,072
Orleans	303	629	466	163	170,904
Oswego	816	2,066	1,467	599	451,940
Otsego	99	190	147	43	92,034
Putnam	55	105	86	19	33,687
Rensselaer	1,018	2,444	1,746	698	617,700
Rockland	662	1,516	1,241	275	457,525
St. Lawrence	571	1,292	927	365	302,856
Saratoga	229	436	375	61	120,692
Schenectady	1,007	2,369	1,773	596	674,459
Schoharie	99	218	176	42	55,733
Schuyler	81	205	148	57	50,399
Seneca	124	290	217	73	69,735
Steuben	419	960	720	240	222,088
Suffolk	3,801	9,051	6,632	2,419	5,575,128
Sullivan	347	752	619	133	213,061
Tioga	245	484	402	82	132,419
Tompkins	311	674	487	187	185,650
Ulster	933	2,090	1,482	608	662,737
Warren	124	252	202	50	91,963
Washington	176	369	311	58	106,845
Wayne	309	647	499	148	182,478
Westchester	2,865	6,547	5,105	1,442	3,276,386
Wyoming	106	232	179	53	57,513
Yates	86	168	137	31	54,063

Table 7  
SAFETY NET ASSISTANCE\*  
Cases, Recipients, Children, Adults and Expenditures by Local District  
December 2014

Local District	Safety Net Assistance				
	Cases	Recipients	Children	Adults	Expenditures
New York State	190,212	322,393	114,988	207,405	\$121,407,745
New York City	125,032	207,489	70,011	137,478	78,496,014
Rest of State	65,180	114,904	44,977	69,927	42,911,731
Albany	1,423	2,965	1,413	1,552	927,929
Allegany	263	447	160	287	120,552
Broome	2,174	3,720	1,422	2,298	1,152,787
Cattaraugus	308	402	95	307	141,170
Cayuga	454	669	201	468	265,834
Chautauqua	1,512	2,882	1,212	1,670	755,828
Chemung	401	586	207	379	197,347
Chenango	247	351	96	255	105,421
Clinton	428	567	138	429	285,605
Columbia	291	433	121	312	183,771
Cortland	424	574	132	442	235,516
Delaware	127	167	33	134	66,765
Dutchess	693	1,109	442	667	553,905
Erie	8,752	17,483	7,685	9,798	4,499,893
Essex	65	82	17	65	28,870
Franklin	306	474	151	323	160,899
Fulton	167	197	33	164	88,633
Genesee	165	240	73	167	101,100
Greene	281	460	158	302	160,371
Hamilton	10	14	2	12	4,259
Herkimer	252	346	88	258	119,986
Jefferson	766	1,032	227	805	449,068
Lewis	60	72	15	57	32,849
Livingston	483	733	210	523	229,448
Madison	205	303	99	204	137,329
Monroe	9,220	17,084	7,348	9,736	4,794,134
Montgomery	206	422	185	237	115,042
Nassau	4,742	7,550	2,544	5,006	3,030,865
Niagara	1,912	3,280	1,241	2,039	838,726
Oneida	2,584	5,535	2,524	3,011	1,268,811
Onondaga	4,022	8,060	3,640	4,420	2,091,077
Ontario	503	693	167	526	307,926
Orange	1,635	3,176	1,417	1,759	1,242,684
Orleans	433	678	229	449	215,817
Oswego	906	1,608	590	1,018	465,858
Otsego	128	145	16	129	106,671
Putnam	90	101	11	90	89,685
Rensselaer	742	1,857	998	859	513,026
Rockland	875	1,468	514	954	523,635
St. Lawrence	799	1,372	466	906	395,062
Saratoga	182	211	46	165	115,211
Schenectady	979	2,039	989	1,050	623,665
Schoharie	97	119	21	98	68,991
Schuyler	131	198	54	144	74,142
Seneca	159	266	101	165	99,708
Steuben	588	910	305	605	297,223
Suffolk	6,826	10,357	3,110	7,247	7,509,668
Sullivan	266	509	243	266	135,549
Tioga	136	166	35	131	85,569
Tompkins	502	741	215	526	266,444
Ulster	1,292	2,042	642	1,400	821,199
Warren	121	150	30	120	104,487
Washington	197	251	63	188	171,119
Wayne	318	399	83	316	139,335
Westchester	4,165	6,996	2,672	4,324	5,291,503
Wyoming	87	110	25	85	39,387
Yates	80	103	23	80	64,377

\* Includes Federally Non-Participating Family Assistance cases (non-disabled two-parent Family Assistance cases).

Table 8  
**TEMPORARY ASSISTANCE BY FUNDING SOURCE**  
**Cases, Recipients, and Expenditures by Local District**  
**December 2014**

Local District	Total			Federally Participating-TANF Family Assistance-FP and Safety Net Assistance-FP			Federally Non-Participating Safety Net Assistance-FNP and Family Assistance-FNP		
	Cases	Recipients	Expenditures	Cases	Recipients	Expenditures	Cases	Recipients	Expenditures
New York State	298,605	573,328	\$191,924,511	109,625	254,126	\$71,406,589	188,980	319,202	\$120,517,922
New York City	184,419	344,154	114,576,032	59,595	137,103	36,170,278	124,824	207,051	78,405,754
Rest of State	114,186	229,174	77,348,479	50,030	117,023	35,236,311	64,156	112,151	42,112,168
Albany	2,799	6,184	1,729,450	1,392	3,258	814,242	1,407	2,926	915,208
Allegany	498	985	244,564	236	541	125,892	262	444	118,672
Broome	3,769	7,174	2,108,668	1,637	3,574	981,100	2,132	3,600	1,127,568
Cattaraugus	625	1,043	311,105	325	657	174,080	300	386	137,025
Cayuga	822	1,537	491,841	389	923	242,188	433	614	249,653
Chautauqua	2,773	5,840	1,468,371	1,272	2,985	717,694	1,501	2,855	750,677
Chemung	846	1,500	438,636	454	944	248,144	392	556	190,492
Chenango	487	874	243,594	243	531	138,917	244	343	104,677
Clinton	878	1,441	532,943	457	895	252,049	421	546	280,894
Columbia	547	1,037	326,066	262	620	144,470	285	417	181,596
Cortland	662	1,093	395,215	248	541	165,731	414	552	229,484
Delaware	287	516	153,407	160	349	86,642	127	167	66,765
Dutchess	1,377	2,566	1,139,785	694	1,486	614,511	683	1,080	525,274
Erie	15,330	33,478	8,287,861	6,672	16,233	3,842,361	8,658	17,245	4,445,500
Essex	138	224	54,751	77	152	26,474	61	72	28,277
Franklin	524	971	278,839	219	499	119,494	305	472	159,345
Fulton	336	537	180,898	173	352	94,280	163	185	86,618
Genesee	327	618	196,731	170	400	101,057	157	218	95,674
Greene	456	839	263,682	181	397	106,662	275	442	157,020
Hamilton	17	26	7,345	7	12	3,086	10	14	4,259
Herkimer	530	946	266,192	281	607	147,829	249	339	118,363
Jefferson	1,210	2,010	679,934	471	1,044	246,768	739	966	433,166
Lewis	129	209	67,534	72	143	37,291	57	66	30,243
Livingston	854	1,635	450,147	381	927	225,475	473	708	224,672
Madison	391	705	237,620	197	438	108,015	194	267	129,605
Monroe	15,442	32,048	8,656,179	6,564	15,882	4,065,187	8,878	16,166	4,590,992
Montgomery	568	1,361	311,959	365	945	198,217	203	416	113,742
Nassau	7,613	13,955	5,033,166	2,885	6,437	2,016,392	4,728	7,518	3,016,774
Niagara	3,293	6,414	1,536,977	1,446	3,301	727,019	1,847	3,113	809,958
Oneida	4,573	10,796	2,430,599	2,021	5,349	1,177,172	2,552	5,447	1,253,427
Onondaga	7,404	16,131	4,012,317	3,395	8,110	1,929,560	4,009	8,021	2,082,757
Ontario	910	1,541	539,021	412	864	235,883	498	677	303,138
Orange	2,886	6,158	2,197,756	1,262	3,009	963,107	1,624	3,149	1,234,649
Orleans	736	1,307	386,721	312	658	177,977	424	649	208,744
Oswego	1,722	3,674	917,798	842	2,164	467,389	880	1,510	450,409
Otsego	227	335	198,705	101	194	95,780	126	141	102,925
Putnam	145	206	123,372	56	108	33,882	89	98	89,490
Rensselaer	1,760	4,301	1,130,726	1,033	2,480	632,541	727	1,821	498,185
Rockland	1,537	2,984	981,160	664	1,521	458,982	873	1,463	522,178
St. Lawrence	1,370	2,664	697,918	575	1,300	307,380	795	1,364	390,538
Saratoga	411	647	235,903	232	441	122,735	179	206	113,168
Schenectady	1,986	4,408	1,298,124	1,011	2,379	677,576	975	2,029	620,548
Schoharie	196	337	124,724	99	218	55,733	97	119	68,991
Schuyler	212	403	124,541	81	205	50,399	131	198	74,142
Seneca	283	556	169,443	126	295	71,485	157	261	97,958
Steuben	1,007	1,870	519,311	419	960	222,088	588	910	297,223
Suffolk	10,627	19,408	13,084,796	3,877	9,279	5,746,007	6,750	10,129	7,338,789
Sullivan	613	1,261	348,610	354	771	215,413	259	490	133,197
Tioga	381	650	217,988	248	489	140,494	133	161	77,494
Tompkins	813	1,415	452,094	326	706	191,402	487	709	260,692
Ulster	2,225	4,132	1,483,936	942	2,112	668,497	1,283	2,020	815,439
Warren	245	402	196,450	129	272	96,275	116	130	100,175
Washington	373	620	277,964	186	393	120,040	187	227	157,924
Wayne	627	1,046	321,813	323	681	190,211	304	365	131,602
Westchester	7,030	13,543	8,567,889	2,882	6,592	3,305,460	4,148	6,951	5,262,429
Wyoming	193	342	96,900	106	232	57,513	87	110	39,387
Yates	166	271	118,440	86	168	54,063	80	103	64,377

Table 9  
**TEMPORARY ASSISTANCE FOR NEEDY FAMILIES-FP BY PROGRAM**  
 Cases, Recipients, Children, Adults and Expenditures by Local District  
 December 2014

Local District	Family Assistance-FP					Safety Net Assistance-FP				
	Cases	Recipients	Children	Adults	Expenditures	Cases	Recipients	Children	Adults	Expenditures
New York State	108,393	250,935	186,055	64,880	\$70,516,766	1,232	3,191	1,885	1,306	\$889,823
New York City	59,387	136,665	101,534	35,131	36,080,018	208	438	305	133	90,260
Rest of State	49,006	114,270	84,521	29,749	34,436,748	1,024	2,753	1,580	1,173	799,563
Albany	1,376	3,219	2,375	844	801,521	16	39	25	14	12,721
Allegany	235	538	405	133	124,012	1	3	1	2	1,880
Broome	1,595	3,454	2,608	846	955,881	42	120	68	52	25,219
Cattaraugus	317	641	510	131	169,935	8	16	8	8	4,145
Cayuga	368	868	625	243	226,007	21	55	31	24	16,181
Chautauqua	1,261	2,958	2,123	835	712,543	11	27	15	12	5,151
Chemung	445	914	758	156	241,289	9	30	20	10	6,855
Chenango	240	523	402	121	138,173	3	8	4	4	744
Clinton	450	874	703	171	247,338	7	21	13	8	4,711
Columbia	256	604	438	166	142,295	6	16	8	8	2,175
Cortland	238	519	377	142	159,699	10	22	11	11	6,032
Delaware	160	349	281	68	86,642	0	0	0	0	0
Dutchess	684	1,457	1,183	274	585,880	10	29	16	13	28,631
Erie	6,578	15,995	11,599	4,396	3,787,968	94	238	130	108	54,393
Essex	73	142	116	26	25,881	4	10	6	4	593
Franklin	218	497	351	146	117,940	1	2	1	1	1,554
Fulton	169	340	281	59	92,265	4	12	8	4	2,015
Genesee	162	378	279	99	95,631	8	22	14	8	5,426
Greene	175	379	281	98	103,311	6	18	10	8	3,351
Hamilton	7	12	9	3	3,086	0	0	0	0	0
Herkimer	278	600	460	140	146,206	3	7	3	4	1,623
Jefferson	444	978	729	249	230,866	27	66	37	29	15,902
Lewis	69	137	113	24	34,685	3	6	3	3	2,606
Livingston	371	902	616	286	220,699	10	25	13	12	4,776
Madison	186	402	309	93	100,291	11	36	22	14	7,724
Monroe	6,222	14,964	10,791	4,173	3,862,045	342	918	535	383	203,142
Montgomery	362	939	699	240	196,917	3	6	3	3	1,300
Nassau	2,871	6,405	4,796	1,609	2,002,301	14	32	18	14	14,091
Niagara	1,381	3,134	2,278	856	698,251	65	167	91	76	28,768
Oneida	1,989	5,261	3,767	1,494	1,161,788	32	88	50	38	15,384
Onondaga	3,382	8,071	5,828	2,243	1,921,240	13	39	24	15	8,320
Ontario	407	848	645	203	231,095	5	16	9	7	4,788
Orange	1,251	2,982	2,242	740	955,072	11	27	15	12	8,035
Orleans	303	629	466	163	170,904	9	29	18	11	7,073
Oswego	816	2,066	1,467	599	451,940	26	98	62	36	15,449
Otsego	99	190	147	43	92,034	2	4	2	2	3,746
Putnam	55	105	86	19	33,687	1	3	2	1	195
Rensselaer	1,018	2,444	1,746	698	617,700	15	36	19	17	14,841
Rockland	662	1,516	1,241	275	457,525	2	5	2	3	1,457
St. Lawrence	571	1,292	927	365	302,856	4	8	4	4	4,524
Saratoga	229	436	375	61	120,692	3	5	2	3	2,043
Schenectady	1,007	2,369	1,773	596	674,459	4	10	7	3	3,117
Schoharie	99	218	176	42	55,733	0	0	0	0	0
Schuyler	81	205	148	57	50,399	0	0	0	0	0
Seneca	124	290	217	73	69,735	2	5	2	3	1,750
Steuben	419	960	720	240	222,088	0	0	0	0	0
Suffolk	3,801	9,051	6,632	2,419	5,575,128	76	228	135	93	170,879
Sullivan	347	752	619	133	213,061	7	19	12	7	2,352
Tioga	245	484	402	82	132,419	3	5	2	3	8,075
Tompkins	311	674	487	187	185,650	15	32	14	18	5,752
Ulster	933	2,090	1,482	608	662,737	9	22	10	12	5,760
Warren	124	252	202	50	91,963	5	20	13	7	4,312
Washington	176	369	311	58	106,845	10	24	16	8	13,195
Wayne	309	647	499	148	182,478	14	34	19	15	7,733
Westchester	2,865	6,547	5,105	1,442	3,276,386	17	45	27	18	29,074
Wyoming	106	232	179	53	57,513	0	0	0	0	0
Yates	86	168	137	31	54,063	0	0	0	0	0

Table 10  
 SAFETY NET ASSISTANCE-FNP AND FAMILY ASSISTANCE-FNP  
 Cases, Recipients, Children, Adults and Expenditures by Local District  
 December 2014

Local District	Safety Net Assistance-FNP and Family Assistance-FNP				
	Cases	Recipients	Children	Adults	Expenditures
New York State	188,980	319,202	113,103	206,099	\$120,517,922
New York City	124,824	207,051	69,706	137,345	78,405,754
Rest of State	64,156	112,151	43,397	68,754	42,112,168
Albany	1,407	2,926	1,388	1,538	915,208
Allegany	262	444	159	285	118,672
Broome	2,132	3,600	1,354	2,246	1,127,568
Cattaraugus	300	386	87	299	137,025
Cayuga	433	614	170	444	249,653
Chautauqua	1,501	2,855	1,197	1,658	750,677
Chemung	392	556	187	369	190,492
Chenango	244	343	92	251	104,677
Clinton	421	546	125	421	280,894
Columbia	285	417	113	304	181,596
Cortland	414	552	121	431	229,484
Delaware	127	167	33	134	66,765
Dutchess	683	1,080	426	654	525,274
Erie	8,658	17,245	7,555	9,690	4,445,500
Essex	61	72	11	61	28,277
Franklin	305	472	150	322	159,345
Fulton	163	185	25	160	86,618
Genesee	157	218	59	159	95,674
Greene	275	442	148	294	157,020
Hamilton	10	14	2	12	4,259
Herkimer	249	339	85	254	118,363
Jefferson	739	966	190	776	433,166
Lewis	57	66	12	54	30,243
Livingston	473	708	197	511	224,672
Madison	194	267	77	190	129,605
Monroe	8,878	16,166	6,813	9,353	4,590,992
Montgomery	203	416	182	234	113,742
Nassau	4,728	7,518	2,526	4,992	3,016,774
Niagara	1,847	3,113	1,150	1,963	809,958
Oneida	2,552	5,447	2,474	2,973	1,253,427
Onondaga	4,009	8,021	3,616	4,405	2,082,757
Ontario	498	677	158	519	303,138
Orange	1,624	3,149	1,402	1,747	1,234,649
Orleans	424	649	211	438	208,744
Oswego	880	1,510	528	982	450,409
Otsego	126	141	14	127	102,925
Putnam	89	98	9	89	89,490
Rensselaer	727	1,821	979	842	498,185
Rockland	873	1,463	512	951	522,178
St. Lawrence	795	1,364	462	902	390,538
Saratoga	179	206	44	162	113,168
Schenectady	975	2,029	982	1,047	620,548
Schoharie	97	119	21	98	68,991
Schuyler	131	198	54	144	74,142
Seneca	157	261	99	162	97,958
Steuben	588	910	305	605	297,223
Suffolk	6,750	10,129	2,975	7,154	7,338,789
Sullivan	259	490	231	259	133,197
Tioga	133	161	33	128	77,494
Tompkins	487	709	201	508	260,692
Ulster	1,283	2,020	632	1,388	815,439
Warren	116	130	17	113	100,175
Washington	187	227	47	180	157,924
Wayne	304	365	64	301	131,602
Westchester	4,148	6,951	2,645	4,306	5,262,429
Wyoming	87	110	25	85	39,387
Yates	80	103	23	80	64,377

Table 11  
**SAFETY NET ASSISTANCE-FNP BY MAINTENANCE OF EFFORT STATUS**  
 Maintenance of Effort (MOE) vs. Non-Maintenance of Effort (Non-MOE)  
 Cases, Recipients, Children, Adults and Expenditures by Local District  
 December 2014

Local District	Maintenance of Effort (MOE)					Non-Maintenance of Effort (Non-MOE)*				
	Cases	Recipients	Children	Adults	Expenditures	Cases	Recipients	Children	Adults	Expenditures
New York State	37,394	121,796	82,522	39,274	\$27,134,995	151,586	197,406	30,581	166,825	\$93,382,927
New York City	25,752	80,895	53,689	27,206	17,167,408	99,072	126,156	16,017	110,139	61,238,346
Rest of State	11,642	40,901	28,833	12,068	9,967,587	52,514	71,250	14,564	56,686	32,144,581
Albany	328	1,205	868	337	216,546	1,079	1,721	520	1,201	698,662
Allegany	38	118	79	39	23,164	224	326	80	246	95,508
Broome	379	1,322	911	411	255,902	1,753	2,278	443	1,835	871,666
Cattaraugus	23	74	51	23	16,025	277	312	36	276	121,000
Cayuga	42	142	96	46	28,349	391	472	74	398	221,304
Chautauqua	365	1,198	801	397	248,566	1,136	1,657	396	1,261	502,111
Chemung	36	148	109	39	23,540	356	408	78	330	166,952
Chenango	13	50	36	14	7,312	231	293	56	237	97,365
Clinton	40	120	77	43	29,358	381	426	48	378	251,536
Columbia	29	101	71	30	19,549	256	316	42	274	162,047
Cortland	39	127	83	44	28,564	375	425	38	387	200,920
Delaware	4	15	11	4	2,230	123	152	22	130	64,535
Dutchess	109	376	269	107	97,232	574	704	157	547	428,042
Erie	1,749	6,330	4,536	1,794	1,194,354	6,909	10,915	3,019	7,896	3,251,146
Essex	2	6	5	1	533	59	66	6	60	27,744
Franklin	40	124	84	40	24,390	265	348	66	282	134,955
Fulton	2	5	3	2	686	161	180	22	158	85,932
Genesee	14	54	39	15	9,444	143	164	20	144	86,230
Greene	38	127	90	37	20,558	237	315	58	257	136,462
Hamilton	0	0	0	0	0	10	14	2	12	4,259
Herkimer	22	67	48	19	13,639	227	272	37	235	104,724
Jefferson	39	129	84	45	23,302	700	837	106	731	409,864
Lewis	1	4	3	1	706	56	62	9	53	29,537
Livingston	48	158	103	55	31,916	425	550	94	456	192,756
Madison	21	65	46	19	16,438	173	202	31	171	113,167
Monroe	2,236	7,803	5,484	2,319	1,526,616	6,642	8,363	1,329	7,034	3,064,376
Montgomery	46	163	114	49	24,510	157	253	68	185	89,232
Nassau	878	2,835	1,942	893	862,637	3,850	4,683	584	4,099	2,154,137
Niagara	332	1,187	837	350	196,744	1,515	1,926	313	1,613	613,214
Oneida	456	1,784	1,308	476	294,690	2,096	3,663	1,166	2,497	958,737
Onondaga	710	2,750	2,026	724	458,977	3,299	5,271	1,590	3,681	1,623,780
Ontario	36	122	82	40	25,909	462	555	76	479	277,229
Orange	418	1,469	1,041	428	371,212	1,206	1,680	361	1,319	863,437
Orleans	58	190	125	65	40,983	366	459	86	373	167,761
Oswego	98	368	258	110	62,625	782	1,142	270	872	387,784
Otsego	1	2	1	1	414	125	139	13	126	102,511
Putnam	3	9	6	3	2,227	86	89	3	86	87,263
Rensselaer	236	852	610	242	159,182	491	969	369	600	339,003
Rockland	80	278	196	82	52,104	793	1,185	316	869	470,074
St. Lawrence	87	291	199	92	56,860	708	1,073	263	810	333,678
Saratoga	1	3	2	1	547	178	203	42	161	112,621
Schenectady	243	931	679	252	184,049	732	1,098	303	795	436,499
Schoharie	3	11	8	3	886	94	108	13	95	68,105
Schuyler	11	36	23	13	5,467	120	162	31	131	68,675
Seneca	20	74	52	22	11,376	137	187	47	140	86,582
Steuben	75	263	182	81	41,626	513	647	123	524	255,597
Suffolk	823	2,993	2,122	871	1,726,782	5,927	7,136	853	6,283	5,612,007
Sullivan	58	192	134	58	31,331	201	298	97	201	101,866
Tioga	5	18	15	3	5,096	128	143	18	125	72,398
Tompkins	51	186	129	57	27,013	436	523	72	451	233,679
Ulster	160	515	360	155	113,032	1,123	1,505	272	1,233	702,407
Warren	2	5	4	1	1,328	114	125	13	112	98,847
Washington	5	16	11	5	3,027	182	211	36	175	154,897
Wayne	18	52	34	18	10,629	286	313	30	283	120,973
Westchester	1,065	3,414	2,328	1,086	1,333,298	3,083	3,537	317	3,220	3,929,131
Wyoming	4	18	14	4	2,581	83	92	11	81	36,806
Yates	2	6	4	2	1,526	78	97	19	78	62,851

\* The Non-MOE category includes otherwise Temporary Assistance for Needy Families eligible or otherwise Safety Net Assistance MOE eligible non-disabled two-parent cases.

Table 12  
**SAFETY NET ASSISTANCE-FNP-CASH TOTAL\***  
 Cases, Recipients, Children, Adults and Expenditures by Local District  
 December 2014

Local District	Safety Net Assistance-FNP Cash Total				
	Cases	Recipients	Children	Adults	Expenditures
New York State	See Note	See Note	See Note	See Note	See Note
New York City	See Note	See Note	See Note	See Note	See Note
Rest of State	37,172	53,992	13,284	40,708	\$22,384,356
Albany	771	1,329	452	877	505,023
Allegany	158	258	74	184	62,732
Broome	1,140	1,517	297	1,220	548,848
Cattaraugus	217	275	51	224	95,179
Cayuga	306	384	73	311	169,838
Chautauqua	796	1,226	333	893	332,136
Chemung	286	345	85	260	126,692
Chenango	196	260	58	202	81,473
Clinton	310	382	70	312	207,876
Columbia	189	249	42	207	102,798
Cortland	244	283	31	252	114,973
Delaware	107	140	26	114	56,439
Dutchess	423	628	222	406	323,138
Erie	5,063	8,670	2,741	5,929	2,293,240
Essex	50	57	6	51	24,580
Franklin	199	265	51	214	103,367
Fulton	126	140	17	123	59,210
Genesee	93	110	15	95	42,682
Greene	180	248	51	197	102,060
Hamilton	10	14	2	12	4,259
Herkimer	161	201	32	169	66,106
Jefferson	503	626	91	535	278,502
Lewis	42	48	5	43	20,639
Livingston	361	486	95	391	158,886
Madison	130	169	41	128	69,705
Monroe	4,263	6,111	1,518	4,593	1,989,940
Montgomery	107	186	55	131	61,568
Nassau	2,610	3,239	449	2,790	1,455,610
Niagara	1,014	1,340	253	1,087	396,636
Oneida	1,675	3,101	1,065	2,036	742,491
Onondaga	2,907	4,857	1,618	3,239	1,442,105
Ontario	336	418	61	357	177,552
Orange	819	1,173	278	895	586,146
Orleans	241	332	86	246	104,196
Oswego	629	968	257	711	304,443
Otsego	106	118	10	108	87,431
Putnam	51	56	7	49	43,940
Rensselaer	387	752	280	472	241,534
Rockland	414	611	152	459	234,335
St. Lawrence	507	798	211	587	228,421
Saratoga	125	152	42	110	66,743
Schenectady	519	770	216	554	274,759
Schoharie	71	85	13	72	46,799
Schuyler	95	132	28	104	50,806
Seneca	100	162	55	107	66,491
Steuben	396	508	102	406	193,930
Suffolk	4,307	5,477	858	4,619	4,302,802
Sullivan	127	206	85	121	70,299
Tioga	97	112	17	95	45,834
Tompkins	285	355	62	293	153,388
Ulster	791	1,117	231	886	501,423
Warren	78	86	10	76	48,929
Washington	143	174	39	135	108,964
Wayne	194	223	24	199	81,866
Westchester	1,598	1,923	218	1,705	2,255,966
Wyoming	61	69	9	60	26,308
Yates	58	71	14	57	42,320

Note: A breakout of Safety Net Assistance-FNP-Cash and Safety Net Assistance-FNP-Non-Cash data is not available for New York City.

\* May include otherwise Temporary Assistance for Needy Families eligible or otherwise Safety Net Assistance MOE eligible non-disabled two-parent cases.

Table 13  
**SAFETY NET ASSISTANCE-FNP-CASH BY MAINTENANCE OF EFFORT STATUS**  
 Maintenance of Effort (MOE) vs. Non-Maintenance of Effort (Non-MOE)  
 Cases, Recipients, Children, Adults and Expenditures by Local District  
 December 2014

Local District	Maintenance of Effort (MOE)					Non-Maintenance of Effort (Non-MOE)*				
	Cases	Recipients	Children	Adults	Expenditures	Cases	Recipients	Children	Adults	Expenditures
New York State	See Note	See Note	See Note	See Note	See Note	See Note	See Note	See Note	See Note	See Note
New York City	See Note	See Note	See Note	See Note	See Note	See Note	See Note	See Note	See Note	See Note
Rest of State	1,246	4,157	2,795	1,362	\$1,114,695	35,926	49,835	10,489	39,346	\$21,269,661
Albany	23	75	51	24	14,303	748	1,254	401	853	490,720
Allegany	1	4	2	2	850	157	254	72	182	61,882
Broome	25	74	45	29	16,020	1,115	1,443	252	1,191	532,828
Cattaraugus	12	38	26	12	8,555	205	237	25	212	86,624
Cayuga	8	21	13	8	4,565	298	363	60	303	165,273
Chautauqua	33	107	66	41	17,603	763	1,119	267	852	314,533
Chemung	6	27	20	7	4,279	280	318	65	253	122,413
Chenango	1	3	2	1	588	195	257	56	201	80,885
Clinton	16	45	26	19	11,607	294	337	44	293	196,269
Columbia	4	14	10	4	2,852	185	235	32	203	99,946
Cortland	3	9	6	3	2,252	241	274	25	249	112,721
Delaware	1	5	4	1	964	106	135	22	113	55,475
Dutchess	48	158	110	48	39,752	375	470	112	358	283,386
Erie	194	627	420	207	132,764	4,869	8,043	2,321	5,722	2,160,476
Essex	0	0	0	0	0	50	57	6	51	24,580
Franklin	2	6	4	2	1,641	197	259	47	212	101,726
Fulton	1	2	1	1	427	125	138	16	122	58,783
Genesee	0	0	0	0	0	93	110	15	95	42,682
Greene	5	17	11	6	3,519	175	231	40	191	98,541
Hamilton	0	0	0	0	0	10	14	2	12	4,259
Herkimer	2	6	4	2	1,452	159	195	28	167	64,654
Jefferson	10	27	15	12	5,362	493	599	76	523	273,140
Lewis	0	0	0	0	0	42	48	5	43	20,639
Livingston	8	28	18	10	6,678	353	458	77	381	152,208
Madison	9	29	20	9	6,333	121	140	21	119	63,372
Monroe	221	755	521	234	150,040	4,042	5,356	997	4,359	1,839,900
Montgomery	4	15	10	5	2,078	103	171	45	126	59,490
Nassau	40	102	60	42	31,156	2,570	3,137	389	2,748	1,424,454
Niagara	31	99	63	36	15,714	983	1,241	190	1,051	380,922
Oneida	59	231	163	68	38,016	1,616	2,870	902	1,968	704,475
Onondaga	160	615	443	172	114,948	2,747	4,242	1,175	3,067	1,327,157
Ontario	1	5	3	2	89	335	413	58	355	177,463
Orange	37	114	73	41	34,326	782	1,059	205	854	551,820
Orleans	10	30	18	12	5,740	231	302	68	234	98,456
Oswego	19	55	31	24	10,379	610	913	226	687	294,064
Otsego	0	0	0	0	0	106	118	10	108	87,431
Putnam	2	6	4	2	1,397	49	50	3	47	42,543
Rensselaer	3	14	11	3	2,074	384	738	269	469	239,460
Rockland	10	30	19	11	4,856	404	581	133	448	229,479
St. Lawrence	12	44	31	13	9,025	495	754	180	574	219,396
Saratoga	1	3	2	1	547	124	149	40	109	66,196
Schenectady	11	36	24	12	6,316	508	734	192	542	268,443
Schoharie	0	0	0	0	0	71	85	13	72	46,799
Schuyler	4	13	8	5	2,214	91	119	20	99	48,592
Seneca	5	19	13	6	3,841	95	143	42	101	62,650
Steuben	7	28	20	8	3,735	389	480	82	398	190,195
Suffolk	131	449	300	149	338,454	4,176	5,028	558	4,470	3,964,348
Sullivan	4	15	10	5	3,256	123	191	75	116	67,043
Tioga	0	0	0	0	0	97	112	17	95	45,834
Tompkins	1	3	2	1	350	284	352	60	292	153,038
Ulster	11	26	15	11	6,405	780	1,091	216	875	495,018
Warren	0	0	0	0	0	78	86	10	76	48,929
Washington	2	8	6	2	1,251	141	166	33	133	107,713
Wayne	6	14	8	6	2,993	188	209	16	193	78,873
Westchester	41	105	63	42	42,765	1,557	1,818	155	1,663	2,213,201
Wyoming	0	0	0	0	0	61	69	9	60	26,308
Yates	1	1	0	1	364	57	70	14	56	41,956

Note: A breakout of Safety Net Assistance-FNP-Cash and Safety Net Assistance-FNP-Non-Cash data is not available for New York City.

\* The Non-MOE category includes otherwise Temporary Assistance for Needy Families eligible or otherwise Safety Net Assistance MOE eligible non-disabled two-parent cases.



Table 14  
SAFETY NET ASSISTANCE-FNP-NON-CASH TOTAL\*  
Cases, Recipients, Children, Adults and Expenditures by Local District  
December 2014

Local District	Safety Net Assistance-FNP-Non-Cash Total				
	Cases	Recipients	Children	Adults	Expenditures
New York State	See Note	See Note	See Note	See Note	See Note
New York City	See Note	See Note	See Note	See Note	See Note
Rest of State	26,984	58,159	30,113	28,046	\$19,727,812
Albany	636	1,597	936	661	410,185
Allegany	104	186	85	101	55,940
Broome	992	2,083	1,057	1,026	578,720
Cattaraugus	83	111	36	75	41,846
Cayuga	127	230	97	133	79,815
Chautauqua	705	1,629	864	765	418,541
Chemung	106	211	102	109	63,800
Chenango	48	83	34	49	23,204
Clinton	111	164	55	109	73,018
Columbia	96	168	71	97	78,798
Cortland	170	269	90	179	114,511
Delaware	20	27	7	20	10,326
Dutchess	260	452	204	248	202,136
Erie	3,595	8,575	4,814	3,761	2,152,260
Essex	11	15	5	10	3,697
Franklin	106	207	99	108	55,978
Fulton	37	45	8	37	27,408
Genesee	64	108	44	64	52,992
Greene	95	194	97	97	54,960
Hamilton	0	0	0	0	0
Herkimer	88	138	53	85	52,257
Jefferson	236	340	99	241	154,664
Lewis	15	18	7	11	9,604
Livingston	112	222	102	120	65,786
Madison	64	98	36	62	59,900
Monroe	4,615	10,055	5,295	4,760	2,601,052
Montgomery	96	230	127	103	52,174
Nassau	2,118	4,279	2,077	2,202	1,561,164
Niagara	833	1,773	897	876	413,322
Oneida	877	2,346	1,409	937	510,936
Onondaga	1,102	3,164	1,998	1,166	640,652
Ontario	162	259	97	162	125,586
Orange	805	1,976	1,124	852	648,503
Orleans	183	317	125	192	104,548
Oswego	251	542	271	271	145,966
Otsego	20	23	4	19	15,494
Putnam	38	42	2	40	45,550
Rensselaer	340	1,069	699	370	256,651
Rockland	459	852	360	492	287,843
St. Lawrence	288	566	251	315	162,117
Saratoga	54	54	2	52	46,425
Schenectady	456	1,259	766	493	345,789
Schoharie	26	34	8	26	22,192
Schuyler	36	66	26	40	23,336
Seneca	57	99	44	55	31,467
Steuben	192	402	203	199	103,293
Suffolk	2,443	4,652	2,117	2,535	3,035,987
Sullivan	132	284	146	138	62,898
Tioga	36	49	16	33	31,660
Tompkins	202	354	139	215	107,304
Ulster	492	903	401	502	314,016
Warren	38	44	7	37	51,246
Washington	44	53	8	45	48,960
Wayne	110	142	40	102	49,736
Westchester	2,550	5,028	2,427	2,601	3,006,463
Wyoming	26	41	16	25	13,079
Yates	22	32	9	23	22,057

Note: A breakout of Safety Net Assistance-FNP-Cash and Safety Net Assistance-FNP-Non-Cash data is not available for New York City.

\* May include otherwise Temporary Assistance for Needy Families eligible or otherwise Safety Net Assistance MOE eligible non-disabled two-parent cases.

Table 15  
**SAFETY NET ASSISTANCE-FNP-NON-CASH BY MAINTENANCE OF EFFORT STATUS**  
 Maintenance of Effort (MOE) vs. Non-Maintenance of Effort (Non-MOE)  
 Cases, Recipients, Children, Adults and Expenditures by Local District  
 December 2014

Local District	Maintenance of Effort (MOE)					Non-Maintenance of Effort (Non-MOE)*				
	Cases	Recipients	Children	Adults	Expenditures	Cases	Recipients	Children	Adults	Expenditures
New York State	See Note	See Note	See Note	See Note	See Note	See Note	See Note	See Note	See Note	See Note
New York City	See Note	See Note	See Note	See Note	See Note	See Note	See Note	See Note	See Note	See Note
Rest of State	10,396	36,744	26,038	10,706	\$8,852,892	16,588	21,415	4,075	17,340	\$10,874,920
Albany	305	1,130	817	313	202,243	331	467	119	348	207,942
Allegany	37	114	77	37	22,314	67	72	8	64	33,626
Broome	354	1,248	866	382	239,882	638	835	191	644	338,838
Cattaraugus	11	36	25	11	7,470	72	75	11	64	34,376
Cayuga	34	121	83	38	23,784	93	109	14	95	56,031
Chautauqua	332	1,091	735	356	230,963	373	538	129	409	187,578
Chemung	30	121	89	32	19,261	76	90	13	77	44,539
Chenango	12	47	34	13	6,724	36	36	0	36	16,480
Clinton	24	75	51	24	17,751	87	89	4	85	55,267
Columbia	25	87	61	26	16,697	71	81	10	71	62,101
Cortland	36	118	77	41	26,312	134	151	13	138	88,199
Delaware	3	10	7	3	1,266	17	17	0	17	9,060
Dutchess	61	218	159	59	57,480	199	234	45	189	144,656
Erie	1,555	5,703	4,116	1,587	1,061,590	2,040	2,872	698	2,174	1,090,670
Essex	2	6	5	1	533	9	9	0	9	3,164
Franklin	38	118	80	38	22,749	68	89	19	70	33,229
Fulton	1	3	2	1	259	36	42	6	36	27,149
Genesee	14	54	39	15	9,444	50	54	5	49	43,548
Greene	33	110	79	31	17,039	62	84	18	66	37,921
Hamilton	0	0	0	0	0	0	0	0	0	0
Herkimer	20	61	44	17	12,187	68	77	9	68	40,070
Jefferson	29	102	69	33	17,940	207	238	30	208	136,724
Lewis	1	4	3	1	706	14	14	4	10	8,898
Livingston	40	130	85	45	25,238	72	92	17	75	40,548
Madison	12	36	26	10	10,105	52	62	10	52	49,795
Monroe	2,015	7,048	4,963	2,085	1,376,576	2,600	3,007	332	2,675	1,224,476
Montgomery	42	148	104	44	22,432	54	82	23	59	29,742
Nassau	838	2,733	1,882	851	831,481	1,280	1,546	195	1,351	729,683
Niagara	301	1,088	774	314	181,030	532	685	123	562	232,292
Oneida	397	1,553	1,145	408	256,674	480	793	264	529	254,262
Onondaga	550	2,135	1,583	552	344,029	552	1,029	415	614	296,623
Ontario	35	117	79	38	25,820	127	142	18	124	99,766
Orange	381	1,355	968	387	336,886	424	621	156	465	311,617
Orleans	48	160	107	53	35,243	135	157	18	139	69,305
Oswego	79	313	227	86	52,246	172	229	44	185	93,720
Otsego	1	2	1	1	414	19	21	3	18	15,080
Putnam	1	3	2	1	830	37	39	0	39	44,720
Rensselaer	233	838	599	239	157,108	107	231	100	131	99,543
Rockland	70	248	177	71	47,248	389	604	183	421	240,595
St. Lawrence	75	247	168	79	47,835	213	319	83	236	114,282
Saratoga	0	0	0	0	0	54	54	2	52	46,425
Schenectady	232	895	655	240	177,733	224	364	111	253	168,056
Schoharie	3	11	8	3	886	23	23	0	23	21,306
Schuyler	7	23	15	8	3,253	29	43	11	32	20,083
Seneca	15	55	39	16	7,535	42	44	5	39	23,932
Steuben	68	235	162	73	37,891	124	167	41	126	65,402
Suffolk	692	2,544	1,822	722	1,388,328	1,751	2,108	295	1,813	1,647,659
Sullivan	54	177	124	53	28,075	78	107	22	85	34,823
Tioga	5	18	15	3	5,096	31	31	1	30	26,564
Tompkins	50	183	127	56	26,663	152	171	12	159	80,641
Ulster	149	489	345	144	106,627	343	414	56	358	207,389
Warren	2	5	4	1	1,328	36	39	3	36	49,918
Washington	3	8	5	3	1,776	41	45	3	42	47,184
Wayne	12	38	26	12	7,636	98	104	14	90	42,100
Westchester	1,024	3,309	2,265	1,044	1,290,533	1,526	1,719	162	1,557	1,715,930
Wyoming	4	18	14	4	2,581	22	23	2	21	10,498
Yates	1	5	4	1	1,162	21	27	5	22	20,895

Note: A breakout of Safety Net Assistance-FNP-Cash and Safety Net Assistance-FNP-Non-Cash data is not available for New York City.

\* The Non-MOE category includes otherwise Temporary Assistance for Needy Families eligible or otherwise Safety Net Assistance MOE eligible non-disabled two-parent cases.

Table 16  
**SUPPLEMENTAL NUTRITION ASSISTANCE PROGRAM**  
Households, Persons and Value of Supplemental Nutrition Assistance Program Benefits by Local District  
December 2014

Local District	Total			Temporary Assistance			Non-Temporary Assistance		
	Households	Persons	SNAP Benefits	Households	Persons	SNAP Benefits	Households	Persons	SNAP Benefits
New York State	1,682,099	3,075,720	\$431,369,618	656,736	983,356	\$151,460,348	1,025,363	2,092,364	\$279,909,270
New York City	972,357	1,742,730	255,417,953	438,565	667,426	102,944,738	533,792	1,075,304	152,473,215
Rest of State	709,742	1,332,990	175,951,665	218,171	315,930	48,515,610	491,571	1,017,060	127,436,055
Albany	19,701	36,790	4,833,343	6,057	8,762	1,346,107	13,644	28,028	3,487,236
Allegany	3,464	6,664	791,779	1,166	1,562	242,429	2,298	5,102	549,350
Broome	16,989	31,349	4,108,446	5,930	8,568	1,373,468	11,059	22,781	2,734,978
Cattaraugus	6,513	12,803	1,563,197	1,644	1,977	322,994	4,869	10,826	1,240,203
Cayuga	5,637	10,867	1,369,445	1,454	2,054	322,097	4,183	8,813	1,047,348
Chautauqua	14,256	27,498	3,579,083	4,230	6,793	1,034,680	10,026	20,705	2,544,403
Chemung	8,148	15,811	2,070,178	2,134	2,587	415,924	6,014	13,224	1,654,254
Chenango	4,086	8,007	977,355	1,017	1,292	196,466	3,069	6,715	780,889
Clinton	6,927	11,942	1,503,638	2,183	2,552	411,244	4,744	9,390	1,092,394
Columbia	3,776	6,543	848,120	1,270	1,676	261,412	2,506	4,867	586,708
Cortland	3,820	7,006	878,426	1,077	1,408	224,193	2,743	5,598	654,233
Delaware	3,360	6,687	816,775	830	971	142,985	2,530	5,716	673,790
Dutchess	13,400	24,095	3,207,214	3,562	4,428	684,373	9,838	19,667	2,522,841
Erie	85,172	158,942	21,133,856	27,341	42,980	6,661,019	57,831	115,962	14,472,837
Essex	2,115	3,795	472,644	690	774	122,954	1,425	3,021	349,690
Franklin	4,093	7,474	980,196	1,402	1,774	280,832	2,691	5,700	699,364
Fulton	5,129	9,616	1,206,849	1,318	1,456	241,935	3,811	8,160	964,914
Genesee	3,305	6,113	754,628	876	1,110	177,312	2,429	5,003	577,316
Greene	3,337	5,901	778,655	1,053	1,411	218,937	2,284	4,490	559,718
Hamilton	262	461	56,957	42	48	7,867	220	413	49,090
Herkimer	5,569	10,592	1,326,152	1,236	1,551	255,459	4,333	9,041	1,070,693
Jefferson	8,204	15,515	1,975,345	2,318	3,014	475,939	5,886	12,501	1,499,406
Lewis	1,851	3,666	419,819	404	491	75,186	1,447	3,175	344,633
Livingston	3,979	7,439	956,583	1,212	1,792	286,048	2,767	5,647	670,535
Madison	4,629	9,165	1,167,958	1,009	1,273	200,550	3,620	7,892	967,408
Monroe	66,446	122,444	16,720,620	25,062	39,187	6,055,041	41,384	83,257	10,665,579
Montgomery	4,736	9,797	1,244,759	1,368	2,020	307,728	3,368	7,777	937,031
Nassau	41,961	67,922	9,115,859	16,302	22,580	3,420,991	25,659	45,342	5,694,868
Niagara	18,246	32,972	4,295,882	5,653	8,274	1,288,545	12,593	24,698	3,007,337
Oneida	20,572	41,516	5,352,015	7,340	12,494	1,863,877	13,232	29,022	3,488,138
Onondaga	38,709	74,266	9,677,580	12,020	19,440	2,935,708	26,689	54,826	6,741,872
Ontario	5,779	10,517	1,330,851	1,564	2,013	326,771	4,215	8,504	1,004,080
Orange	20,343	47,734	6,273,119	5,554	8,353	1,224,703	14,789	39,381	5,048,416
Orleans	3,260	6,320	774,443	991	1,460	228,610	2,269	4,860	545,833
Oswego	9,679	20,170	2,552,368	2,741	4,371	674,202	6,938	15,799	1,878,166
Otsego	3,315	6,201	764,434	812	891	144,372	2,503	5,310	620,062
Putnam	1,772	2,779	366,141	531	582	87,486	1,241	2,197	278,655
Rensselaer	9,326	18,722	2,346,128	3,191	5,258	755,682	6,135	13,464	1,590,446
Rockland	17,331	47,743	6,297,457	3,864	5,207	805,998	13,467	42,536	5,491,459
St. Lawrence	8,636	17,001	2,103,730	2,854	3,920	606,556	5,782	13,081	1,497,174
Saratoga	8,933	15,825	1,980,410	1,868	2,043	333,776	7,065	13,782	1,646,634
Schenectady	13,564	25,642	3,470,706	4,371	6,513	999,047	9,193	19,129	2,471,659
Schoharie	2,036	3,801	482,447	511	619	98,586	1,525	3,182	383,861
Schuyler	1,298	2,561	301,587	336	491	77,674	962	2,070	223,913
Seneca	1,903	3,626	465,272	535	748	112,137	1,368	2,878	353,135
Steuben	6,221	12,504	1,475,819	1,894	2,628	394,896	4,327	9,876	1,080,923
Suffolk	75,808	130,394	18,204,569	20,207	27,546	4,179,837	55,601	102,848	14,024,732
Sullivan	6,020	11,921	1,623,754	1,771	2,282	352,126	4,249	9,639	1,271,628
Tioga	3,176	6,476	757,028	722	890	138,577	2,454	5,586	618,451
Tompkins	5,227	9,189	1,192,574	1,516	1,988	314,427	3,711	7,201	878,147
Ulster	12,228	21,583	2,921,567	4,109	5,820	912,668	8,119	15,763	2,008,899
Warren	4,135	7,489	932,617	1,090	1,240	201,714	3,045	6,249	730,903
Washington	4,047	7,757	950,284	961	1,133	180,160	3,086	6,624	770,124
Wayne	5,687	10,662	1,313,206	1,577	1,911	309,406	4,110	8,751	1,003,800
Westchester	48,385	86,451	12,161,399	14,611	20,753	3,048,804	33,774	65,698	9,112,595
Wyoming	1,787	3,414	393,278	464	574	90,756	1,323	2,840	302,522
Yates	1,454	2,850	333,121	326	397	62,339	1,128	2,453	270,782

Note: Supplemental Nutrition Assistance Program households containing only Supplemental Security Income recipients or a mix of Temporary Assistance and Supplemental Security Income recipients are counted as Temporary Assistance.

Table 17  
**SUPPLEMENTAL SECURITY INCOME**  
 Recipients, Total Program Expenditures and Federal and State Shares, by Local District  
 December 2014

Local District	Recipients	Expenditures		
		Total	Federal	State
New York State*	717,040	\$413,666,178	\$360,836,989	\$52,829,189
New York City	432,656	253,354,510	222,981,854	30,372,656
Rest of State	279,311	158,089,861	136,329,468	21,760,393
Albany	7,615	4,310,272	3,776,482	533,790
Allegany	1,607	867,438	751,706	115,732
Broome	7,400	4,244,804	3,777,729	467,075
Cattaraugus	2,695	1,452,473	1,259,807	192,666
Cayuga	1,971	1,103,639	936,818	166,821
Chautauqua	5,194	2,925,603	2,550,849	374,754
Chemung	3,642	1,970,660	1,716,200	254,460
Chenango	1,665	898,607	792,778	105,829
Clinton	3,181	1,778,488	1,545,577	232,911
Columbia	1,739	994,834	806,635	188,199
Cortland	1,338	718,042	618,741	99,301
Delaware	1,329	706,518	600,639	105,879
Dutchess	6,081	3,442,767	2,784,446	658,321
Erie	30,847	17,986,501	15,761,277	2,225,224
Essex	1,137	650,123	517,162	132,961
Franklin	1,845	1,039,669	880,574	159,095
Fulton	2,286	1,284,526	1,078,365	206,161
Genesee	1,320	742,251	619,958	122,293
Greene	1,540	881,849	771,406	110,443
Hamilton	59	42,552	38,709	3,843
Herkimer	1,815	985,587	850,935	134,652
Jefferson	3,067	1,685,872	1,445,334	240,538
Lewis	659	356,526	313,421	43,105
Livingston	1,313	753,753	675,743	78,010
Madison	1,492	791,196	685,199	105,997
Monroe	27,801	16,793,514	14,833,039	1,960,475
Montgomery	2,054	1,193,873	1,039,256	154,617
Nassau	19,145	10,364,896	8,802,170	1,562,726
Niagara	6,475	3,684,215	3,193,295	490,920
Oneida	8,922	5,050,029	4,442,910	607,119
Onondaga	15,579	9,182,001	8,182,095	999,906
Ontario	2,065	1,079,141	939,810	139,331
Orange	7,526	4,246,194	3,649,155	597,039
Orleans	1,050	565,220	494,769	70,451
Oswego	3,597	2,120,709	1,926,303	194,406
Otsego	1,522	884,731	741,851	142,880
Putnam	938	491,991	399,513	92,478
Rensselaer	4,825	2,776,358	2,373,987	402,371
Rockland	5,793	3,197,237	2,434,972	762,265
St. Lawrence	4,076	2,225,616	1,957,811	267,805
Saratoga	3,250	1,732,376	1,499,842	232,534
Schenectady	5,966	3,511,213	3,104,470	406,743
Schoharie	797	464,438	386,325	78,113
Schuyler	489	256,363	205,802	50,561
Seneca	837	462,830	400,800	62,030
Steuben	3,308	1,791,045	1,581,672	209,373
Suffolk	23,572	13,089,459	10,902,350	2,187,109
Sullivan	2,890	1,582,942	1,280,345	302,597
Tioga	1,301	767,443	685,086	82,357
Tompkins	1,744	982,792	836,136	146,656
Ulster	4,581	2,547,650	2,153,405	394,245
Warren	1,774	955,785	822,207	133,578
Washington	1,744	951,863	823,036	128,827
Wayne	2,336	1,320,990	1,172,842	148,148
Westchester	19,232	10,510,507	8,911,159	1,599,348
Wyoming	715	380,702	332,517	48,185
Yates	570	311,188	264,048	47,140
Mental Hygiene	5,073	2,221,807	1,525,667	696,140

\* Only New York State includes Mental Hygiene

Table 18  
**SUPPLEMENTAL SECURITY INCOME**  
 Recipients by Living Arrangement and Location  
 December 2014

Living Arrangement	New York State	New York City	Rest of State	Mental Hygiene
Living Alone	353,359	231,329	122,028	2
Living With Others	275,541	158,772	116,763	6
Living in Household of Another	28,872	17,277	11,594	1
Congregate Care Level 1	2,672	298	557	1,817
Congregate Care Level 2	26,794	9,709	16,197	888
Congregate Care Level 3	12,847	6,466	6,381	0
Title XIX Institution	12,554	7,601	4,224	729
Other*	4,401	1,317	1,567	1,517
<b>Total</b>	<b>717,040</b>	<b>432,769</b>	<b>279,311</b>	<b>4,960</b>

Table 19  
**SUPPLEMENTAL SECURITY INCOME**  
 Recipients by Living Arrangement and Category of Assistance  
 December 2014

Living Arrangement	Total	Category of Assistance		
		Aged	Blind	Disabled
Living Alone	353,359	101,226	1,323	250,810
Living With Others	275,541	22,553	1,181	251,807
Living in Household of Another	28,872	8,188	191	20,493
Congregate Care Level 1	2,672	306	12	2,354
Congregate Care Level 2	26,794	1,618	96	25,080
Congregate Care Level 3	12,847	5,028	32	7,787
Title XIX Institution & Other*	16,955	2,341	92	14,522
<b>Total</b>	<b>717,040</b>	<b>141,260</b>	<b>2,927</b>	<b>572,853</b>

\* "Other" includes recipients either a) residing in a private medical facility and Medicaid is paying for less than 50% of the cost of care, b) residing in certain publicly operated residential facilities serving 16 or fewer residents, or c) residing in a public emergency shelter for six calendar months during a nine month period. Such cases receive no state Supplemental Security Income supplement.

Table 20  
CHILD SUPPORT COLLECTIONS (IV-D)  
December 2014

Local District	Total	Current Assistance	Former Assistance	Never Assistance
New York State	\$152,250,046.60	\$5,795,324.82	\$74,385,801.94	\$72,068,919.87
New York City	61,992,870.90	2,747,037.44	31,543,141.58	27,702,691.88
Rest of State	90,257,175.73	3,048,287.38	42,842,660.36	44,366,227.99
Albany	2,358,359.93	71,639.71	986,949.49	1,299,770.73
Allegany	503,176.24	28,726.87	313,563.18	160,886.19
Broome	1,386,618.18	82,713.43	728,083.70	575,821.05
Cattaraugus	912,537.06	33,811.45	520,934.60	357,791.01
Cayuga	722,393.73	31,468.67	421,320.91	269,604.15
Chautauqua	1,193,540.15	79,559.56	727,491.02	386,489.57
Chemung	758,482.41	26,633.85	479,369.93	252,478.63
Chenango	407,608.80	16,811.54	228,980.65	161,816.61
Clinton	843,466.05	46,171.69	424,249.28	373,045.08
Columbia	477,096.46	20,245.34	250,742.33	206,108.79
Cortland	397,047.48	18,134.65	240,161.09	138,751.74
Delaware	367,507.39	17,368.27	222,938.03	127,201.09
Dutchess	2,661,607.03	55,018.84	909,668.96	1,696,919.23
Erie	6,796,275.62	309,669.59	3,740,869.48	2,745,736.55
Essex	301,142.27	10,272.30	156,488.11	134,381.86
Franklin	448,108.08	12,900.60	223,153.54	212,053.94
Fulton	567,184.32	14,545.86	374,084.80	178,553.66
Genesee	516,774.69	14,719.49	259,051.88	243,003.32
Greene	398,128.19	12,223.72	199,023.49	186,880.98
Hamilton	25,999.21	119.49	15,587.29	10,292.43
Herkimer	483,050.45	17,888.82	266,687.67	198,473.96
Jefferson	1,308,213.67	46,127.93	539,711.98	722,373.76
Lewis	357,139.81	7,067.90	236,833.23	113,238.68
Livingston	601,238.54	38,036.75	333,881.79	229,320.00
Madison	498,997.94	13,861.86	266,973.50	218,162.58
Monroe	5,851,766.58	267,339.26	3,083,237.02	2,501,190.30
Montgomery	484,381.62	31,573.03	310,754.41	142,054.18
Nassau	8,753,628.41	174,308.10	3,139,289.25	5,440,031.06
Niagara	1,600,537.43	83,819.61	960,689.51	556,028.31
Oneida	1,590,532.52	88,152.45	947,332.89	555,047.18
Onondaga	3,856,518.29	130,541.65	2,239,067.94	1,486,908.70
Ontario	970,435.52	33,481.03	508,695.05	428,259.44
Orange	3,416,779.84	98,246.90	1,292,998.12	2,025,534.82
Orleans	366,160.48	16,417.89	216,298.98	133,443.61
Oswego	1,134,317.87	60,375.54	675,982.87	397,959.46
Otsego	386,877.46	7,968.56	185,491.48	193,417.42
Putnam	697,453.51	5,134.62	244,493.17	447,825.72
Rensselaer	1,699,121.45	80,274.58	726,196.47	892,650.40
Rockland	2,313,626.58	53,939.14	903,348.73	1,356,338.71
St. Lawrence	1,102,095.64	44,891.45	697,975.92	359,228.27
Saratoga	1,712,011.78	17,482.15	721,205.67	973,323.96
Schenectady	1,361,605.78	39,321.80	576,067.72	746,216.26
Schoharie	311,902.83	11,755.91	175,326.20	124,820.72
Schuyler	172,571.06	8,669.00	116,355.33	47,546.73
Seneca	301,591.86	19,406.79	144,368.59	137,816.48
Steuben	946,442.61	31,743.18	578,510.75	336,188.68
Suffolk	13,494,911.88	324,018.93	6,024,793.54	7,146,099.41
Sullivan	698,267.73	23,238.56	352,964.76	322,064.41
Tioga	484,282.73	24,941.77	271,873.34	187,467.62
Tompkins	631,072.82	31,481.04	298,290.46	301,301.32
Ulster	1,493,580.42	72,982.08	713,851.73	706,746.61
Warren	786,992.95	19,166.48	373,680.60	394,145.87
Washington	669,283.25	20,406.84	357,732.09	291,144.32
Wayne	883,449.99	21,537.83	447,604.80	414,307.36
Westchester	6,216,968.56	160,509.60	2,200,399.20	3,856,059.76
Wyoming	412,695.25	14,637.35	194,069.37	203,988.53
Yates	163,617.33	4,786.08	96,914.47	61,916.78

Table 21  
**AGGREGATE CLAIMS**  
**TOTAL TEMPORARY ASSISTANCE**  
Family Assistance and Safety Net Assistance  
December 2014

Month	New York State			New York City			Rest of State		
	Recipients	Net Expenditures	Monthly Average Payment	Recipients	Net Expenditures	Monthly Average Payment	Recipients	Net Expenditures	Monthly Average Payment
January 2013	585,685	\$238,536,446	\$407.28	359,214	\$171,039,712	\$476.15	226,471	\$67,496,734	\$298.04
February 2013	584,874	\$226,399,716	\$387.09	357,200	\$158,355,307	\$443.32	227,674	\$68,044,409	\$298.87
March 2013	585,762	\$218,825,901	\$373.57	357,234	\$150,189,997	\$420.42	228,528	\$68,635,904	\$300.34
April 2013	589,725	\$229,924,511	\$389.88	359,652	\$158,688,921	\$441.23	230,073	\$71,235,590	\$309.62
May 2013	587,316	\$232,005,475	\$395.03	356,604	\$159,988,278	\$448.64	230,712	\$72,017,197	\$312.15
June 2013	580,109	\$226,898,703	\$391.13	352,026	\$158,719,731	\$450.88	228,083	\$68,178,972	\$298.92
July 2013	576,355	\$211,426,179	\$366.83	347,892	\$143,454,205	\$412.35	228,463	\$67,971,974	\$297.52
August 2013	573,835	\$210,360,299	\$366.59	345,020	\$142,617,183	\$413.36	228,815	\$67,743,116	\$296.06
September 2013	569,174	\$227,485,267	\$399.68	341,812	\$160,904,569	\$470.74	227,362	\$66,580,698	\$292.84
October 2013	573,292	\$222,891,580	\$388.79	342,337	\$153,692,785	\$448.95	230,955	\$69,198,795	\$299.62
November 2013	568,983	\$218,665,959	\$384.31	340,896	\$151,876,636	\$445.52	228,087	\$66,789,323	\$292.82
December 2013	566,424	\$284,303,969	\$501.93	339,513	\$209,886,676	\$618.20	226,911	\$74,417,293	\$327.96
January 2014	560,991	\$217,920,198	\$388.46	333,708	\$150,620,722	\$451.35	227,283	\$67,299,476	\$296.10
February 2014	561,525	\$210,100,410	\$374.16	333,162	\$140,749,161	\$422.46	228,363	\$69,351,249	\$303.69
March 2014	566,456	\$228,183,381	\$402.83	334,732	\$155,317,544	\$464.01	231,724	\$72,865,837	\$314.45
April 2014	565,463	\$233,259,990	\$412.51	332,074	\$158,003,253	\$475.81	233,389	\$75,256,737	\$322.45
May 2014	564,612	\$219,692,156	\$389.10	330,872	\$144,710,332	\$437.36	233,740	\$74,981,824	\$320.79
June 2014	563,201	\$223,560,059	\$396.95	331,315	\$151,506,837	\$457.29	231,886	\$72,053,222	\$310.73
July 2014	562,676	\$217,050,586	\$385.75	331,407	\$147,863,357	\$446.17	231,269	\$69,187,229	\$299.16
August 2014	565,719	\$204,112,783	\$360.80	336,383	\$134,766,087	\$400.63	229,336	\$69,346,696	\$302.38
September 2014	567,809	\$227,445,210	\$400.57	339,380	\$158,551,814	\$467.18	228,429	\$68,893,396	\$301.60
October 2014	571,842	\$243,203,161	\$425.30	339,804	\$170,327,854	\$501.25	232,038	\$72,875,307	\$314.07
November 2014	566,688	\$206,422,145	\$364.26	341,498	\$142,210,519	\$416.43	225,190	\$64,211,626	\$285.14
December 2014	573,328	\$150,389,127	\$262.31	344,154	\$104,281,330	\$303.01	229,174	\$46,107,797	\$201.19

Note: Data pursuant to a New York State Legislative mandate S. 6057-B/A. 9557-B, Chapter 57, L. 2004.

Based on local district claims submitted on claims Schedules A and C. Includes reimbursable expenditures for basic assistance, rent supplements, family shelters, domestic violence shelters, security deposits, transitional services, diversion transportation, diversion payments, and other non-assistance. These claims are net of cancellations and refunds, and include any reconciliations and supplemental claims applied to the month after initial expenditure reporting is done. Thus, these data differ from the expenditure data presented elsewhere in this document, which are derived from original payment issuance activity during the month, net of cancellations and refunds in that month.

District claiming activity for recent months is generally not complete before the statutorily required due date for this report. Thus, claims for recent months may appear substantially below those for earlier months. Claims tables in future months of this report will continue to include the historical periods above, adjusted for claiming activity occurring subsequent to this report.

Table 22  
**AGGREGATE CLAIMS**  
**FEDERALLY PARTICIPATING - TANF**  
**Family Assistance-FP and Safety Net Assistance-FP**  
**December 2014**

Month	New York State			New York City			Rest of State		
	Recipients	Net Expenditures	Monthly Average Payment	Recipients	Net Expenditures	Monthly Average Payment	Recipients	Net Expenditures	Monthly Average Payment
January 2013	262,170	\$108,274,130	\$412.99	141,976	\$74,803,776	\$526.88	120,194	\$33,470,354	\$278.47
February 2013	261,491	\$98,041,269	\$374.93	141,314	\$64,505,287	\$456.47	120,177	\$33,535,982	\$279.05
March 2013	259,524	\$103,364,886	\$398.29	139,783	\$69,652,596	\$498.29	119,741	\$33,712,290	\$281.54
April 2013	260,660	\$101,492,686	\$389.37	140,974	\$66,368,426	\$470.78	119,686	\$35,124,260	\$293.47
May 2013	259,401	\$99,347,713	\$382.99	138,701	\$63,963,986	\$461.16	120,700	\$35,383,727	\$293.15
June 2013	266,926	\$105,715,334	\$396.05	147,058	\$71,922,193	\$489.07	119,868	\$33,793,141	\$281.92
July 2013	264,767	\$90,319,986	\$341.13	144,851	\$57,077,984	\$394.05	119,916	\$33,242,002	\$277.21
August 2013	265,230	\$89,152,840	\$336.13	144,486	\$55,672,931	\$385.32	120,744	\$33,479,909	\$277.28
September 2013	263,064	\$105,076,551	\$399.43	142,765	\$71,623,613	\$501.69	120,299	\$33,452,938	\$278.08
October 2013	265,039	\$97,345,794	\$367.29	143,191	\$62,967,599	\$439.75	121,848	\$34,378,195	\$282.14
November 2013	261,958	\$96,127,899	\$366.96	141,744	\$63,281,911	\$446.45	120,214	\$32,845,988	\$273.23
December 2013	260,468	\$134,680,423	\$517.07	141,437	\$97,225,183	\$687.41	119,031	\$37,455,240	\$314.67
January 2014	256,124	\$95,355,999	\$372.30	137,459	\$62,390,603	\$453.89	118,665	\$32,965,396	\$277.80
February 2014	255,541	\$89,422,412	\$349.93	136,833	\$56,115,950	\$410.11	118,708	\$33,306,462	\$280.57
March 2014	255,898	\$100,889,135	\$394.26	136,966	\$65,654,316	\$479.35	118,932	\$35,234,819	\$296.26
April 2014	253,936	\$100,956,353	\$397.57	134,985	\$64,926,898	\$480.99	118,951	\$36,029,455	\$302.89
May 2014	253,505	\$92,440,031	\$364.65	134,113	\$57,980,291	\$432.32	119,392	\$34,459,740	\$288.63
June 2014	253,465	\$101,553,766	\$400.66	134,148	\$67,129,170	\$500.41	119,317	\$34,424,596	\$288.51
July 2014	252,643	\$88,882,394	\$351.81	133,462	\$55,599,258	\$416.59	119,181	\$33,283,136	\$279.27
August 2014	254,875	\$83,741,076	\$328.56	136,240	\$50,378,086	\$369.77	118,635	\$33,362,990	\$281.22
September 2014	254,656	\$98,796,691	\$387.96	136,630	\$65,143,997	\$476.79	118,026	\$33,652,694	\$285.13
October 2014	255,720	\$104,674,976	\$409.33	136,355	\$69,707,487	\$511.22	119,365	\$34,967,489	\$292.95
November 2014	255,842	\$86,276,048	\$337.22	139,293	\$54,977,009	\$394.69	116,549	\$31,299,039	\$268.55
December 2014	254,126	\$60,947,341	\$239.83	137,103	\$39,038,955	\$284.74	117,023	\$21,908,386	\$187.21

Note: Data pursuant to a New York State Legislative mandate S. 6057-B/A. 9557-B, Chapter 57, L. 2004.

Based on local district claims submitted on claims Schedules A and C. Includes reimbursable expenditures for basic assistance, rent supplements, family shelters, domestic violence shelters, security deposits, transitional services, diversion transportation, diversion payments, and other non-assistance. These claims are net of cancellations and refunds, and include any reconciliations and supplemental claims applied to the month after initial expenditure reporting is done. Thus, these data differ from the expenditure data presented elsewhere in this document, which are derived from original payment issuance activity during the month, net of cancellations and refunds in that month.

District claiming activity for recent months is generally not complete before the statutorily required due date for this report. Thus, claims for recent months may appear substantially below those for earlier months. Claims tables in future months of this report will continue to include the historical periods above, adjusted for claiming activity occurring subsequent to this report.



Table 23  
**AGGREGATE CLAIMS**  
**FEDERALLY NON-PARTICIPATING**  
Safety Net Assistance-FNP Maintenance of Effort  
December 2014

Month	New York State			New York City			Rest of State		
	Recipients	Net Expenditures	Monthly Average Payment	Recipients	Net Expenditures	Monthly Average Payment	Recipients	Net Expenditures	Monthly Average Payment
January 2013	125,540	\$38,743,759	\$308.62	88,956	\$30,481,386	\$342.66	36,584	\$8,262,373	\$225.85
February 2013	124,851	\$36,130,991	\$289.39	88,079	\$27,528,668	\$312.55	36,772	\$8,602,323	\$233.94
March 2013	127,575	\$30,026,618	\$235.36	90,723	\$21,776,180	\$240.03	36,852	\$8,250,438	\$223.88
April 2013	127,116	\$38,705,045	\$304.49	90,049	\$29,825,647	\$331.22	37,067	\$8,879,398	\$239.55
May 2013	126,753	\$38,944,721	\$307.25	89,559	\$30,063,718	\$335.69	37,194	\$8,881,003	\$238.78
June 2013	116,556	\$31,079,711	\$266.65	79,424	\$23,033,165	\$290.00	37,132	\$8,046,546	\$216.70
July 2013	116,391	\$32,899,994	\$282.67	78,992	\$24,451,850	\$309.55	37,399	\$8,448,144	\$225.89
August 2013	117,690	\$30,713,124	\$260.97	80,021	\$22,284,105	\$278.48	37,669	\$8,429,019	\$223.77
September 2013	117,493	\$41,604,989	\$354.11	79,627	\$33,179,665	\$416.69	37,866	\$8,425,324	\$222.50
October 2013	116,490	\$35,690,808	\$306.39	78,167	\$26,775,317	\$342.54	38,323	\$8,915,491	\$232.64
November 2013	118,437	\$34,340,355	\$289.95	80,274	\$25,654,665	\$319.59	38,163	\$8,685,690	\$227.59
December 2013	117,452	\$51,946,222	\$442.28	78,754	\$42,551,530	\$540.31	38,698	\$9,394,692	\$242.77
January 2014	116,278	\$35,308,552	\$303.66	77,255	\$26,504,400	\$343.08	39,023	\$8,804,152	\$225.61
February 2014	116,505	\$31,251,811	\$268.24	77,327	\$22,124,863	\$286.12	39,178	\$9,126,948	\$232.96
March 2014	117,670	\$41,140,089	\$349.62	78,426	\$31,555,885	\$402.37	39,244	\$9,584,204	\$244.22
April 2014	114,869	\$37,590,471	\$327.25	75,862	\$27,432,360	\$361.61	39,007	\$10,158,111	\$260.42
May 2014	114,478	\$33,510,002	\$292.72	75,265	\$24,181,272	\$321.28	39,213	\$9,328,730	\$237.90
June 2014	114,786	\$39,007,843	\$339.83	75,107	\$29,713,919	\$395.62	39,679	\$9,293,924	\$234.23
July 2014	114,537	\$33,265,243	\$290.43	74,604	\$24,145,121	\$323.64	39,933	\$9,120,122	\$228.39
August 2014	116,548	\$29,348,374	\$251.81	77,266	\$20,625,986	\$266.95	39,282	\$8,722,388	\$222.05
September 2014	117,457	\$39,881,199	\$339.54	77,600	\$30,949,827	\$398.84	39,857	\$8,931,372	\$224.09
October 2014	117,954	\$36,923,686	\$313.03	77,641	\$27,254,967	\$351.04	40,313	\$9,668,719	\$239.84
November 2014	116,448	\$31,063,890	\$266.76	76,629	\$22,565,979	\$294.48	39,819	\$8,497,911	\$213.41
December 2014	121,796	\$33,727,941	\$276.92	80,895	\$27,638,540	\$341.66	40,901	\$6,089,401	\$148.88

Note: Data pursuant to a New York State Legislative mandate S. 6057-B/A. 9557-B, Chapter 57, L. 2004.

Based on local district claims submitted on claims Schedules A and C. Includes reimbursable expenditures for basic assistance, rent supplements, family shelters, domestic violence shelters, security deposits, transitional services, diversion transportation, diversion payments, and other non-assistance. These claims are net of cancellations and refunds, and include any reconciliations and supplemental claims applied to the month after initial expenditure reporting is done. Thus, these data differ from the expenditure data presented elsewhere in this document, which are derived from original payment issuance activity during the month, net of cancellations and refunds in that month.

District claiming activity for recent months is generally not complete before the statutorily required due date for this report. Thus, claims for recent months may appear substantially below those for earlier months. Claims tables in future months of this report will continue to include the historical periods above, adjusted for claiming activity occurring subsequent to this report.

Table 24  
**AGGREGATE CLAIMS**  
**FEDERALLY NON-PARTICIPATING**  
Safety Net Assistance-FNP and Family Assistance-FNP Non-Maintenance of Effort  
December 2014

Month	New York State			New York City			Rest of State		
	Recipients	Net Expenditures	Monthly Average Payment	Recipients	Net Expenditures	Monthly Average Payment	Recipients	Net Expenditures	Monthly Average Payment
January 2013	197,975	\$91,518,557	\$462.27	128,282	\$65,754,550	\$512.58	69,693	\$25,764,007	\$369.68
February 2013	198,532	\$92,227,456	\$464.55	127,807	\$66,321,352	\$518.92	70,725	\$25,906,104	\$366.29
March 2013	198,663	\$85,434,397	\$430.05	126,728	\$58,761,221	\$463.68	71,935	\$26,673,176	\$370.80
April 2013	201,949	\$89,726,780	\$444.30	128,629	\$62,494,848	\$485.85	73,320	\$27,231,932	\$371.41
May 2013	201,162	\$93,713,041	\$465.86	128,344	\$65,960,574	\$513.94	72,818	\$27,752,467	\$381.12
June 2013	196,627	\$90,103,658	\$458.25	125,544	\$63,764,373	\$507.90	71,083	\$26,339,285	\$370.54
July 2013	195,197	\$88,206,199	\$451.88	124,049	\$61,924,371	\$499.19	71,148	\$26,281,828	\$369.40
August 2013	190,915	\$90,494,335	\$474.00	120,513	\$64,660,147	\$536.54	70,402	\$25,834,188	\$366.95
September 2013	188,617	\$80,803,727	\$428.40	119,420	\$56,101,291	\$469.78	69,197	\$24,702,436	\$356.99
October 2013	191,763	\$89,854,978	\$468.57	120,979	\$63,949,869	\$528.60	70,784	\$25,905,109	\$365.97
November 2013	188,588	\$88,197,705	\$467.67	118,878	\$62,940,060	\$529.45	69,710	\$25,257,645	\$362.32
December 2013	188,504	\$97,677,324	\$518.17	119,322	\$70,109,963	\$587.57	69,182	\$27,567,361	\$398.48
January 2014	188,589	\$87,255,647	\$462.68	118,994	\$61,725,719	\$518.73	69,595	\$25,529,928	\$366.84
February 2014	189,479	\$89,426,187	\$471.96	119,002	\$62,508,348	\$525.27	70,477	\$26,917,839	\$381.94
March 2014	192,888	\$86,154,157	\$446.65	119,340	\$58,107,343	\$486.91	73,548	\$28,046,814	\$381.34
April 2014	196,658	\$94,713,166	\$481.61	121,227	\$65,643,995	\$541.50	75,431	\$29,069,171	\$385.37
May 2014	196,629	\$93,742,123	\$476.75	121,494	\$62,548,769	\$514.83	75,135	\$31,193,354	\$415.16
June 2014	194,950	\$82,998,450	\$425.74	122,060	\$54,663,748	\$447.84	72,890	\$28,334,702	\$388.73
July 2014	195,496	\$94,902,949	\$485.45	123,341	\$68,118,978	\$552.28	72,155	\$26,783,971	\$371.20
August 2014	194,296	\$91,023,333	\$468.48	122,877	\$63,762,015	\$518.91	71,419	\$27,261,318	\$381.71
September 2014	195,696	\$88,767,320	\$453.60	125,150	\$62,457,990	\$499.07	70,546	\$26,309,330	\$372.94
October 2014	198,168	\$101,604,499	\$512.72	125,808	\$73,365,400	\$583.15	72,360	\$28,239,099	\$390.26
November 2014	194,398	\$89,082,207	\$458.25	125,576	\$64,667,531	\$514.97	68,822	\$24,414,676	\$354.75
December 2014	197,406	\$55,713,845	\$282.23	126,156	\$37,603,835	\$298.07	71,250	\$18,110,010	\$254.18

Note: Data pursuant to a New York State Legislative mandate S. 6057-B/A. 9557-B, Chapter 57, L. 2004.

Based on local district claims submitted on claims Schedules A and C. Includes reimbursable expenditures for basic assistance, rent supplements, family shelters, domestic violence shelters, security deposits, transitional services, diversion transportation, diversion payments, and other non-assistance. These claims are net of cancellations and refunds, and include any reconciliations and supplemental claims applied to the month after initial expenditure reporting is done. Thus, these data differ from the expenditure data presented elsewhere in this document, which are derived from original payment issuance activity during the month, net of cancellations and refunds in that month.

District claiming activity for recent months is generally not complete before the statutorily required due date for this report. Thus, claims for recent months may appear substantially below those for earlier months. Claims tables in future months of this report will continue to include the historical periods above, adjusted for claiming activity occurring subsequent to this report.

Table 25  
HOME ENERGY ASSISTANCE PROGRAM\*  
Number and Dollar Amount of Benefits Authorized and Administrative Allocations - Federal Fiscal Year to Date  
December 2014

Local District	Benefits Authorized		Administrative Allocations
	Number	Dollar Amount	
New York State	1,202,414	\$188,962,938	\$19,198,136
New York City	657,530	30,770,038	5,173,161
Rest of State	544,884	158,192,900	14,024,975
Albany	15,391	3,685,300	243,078
Allegany	3,618	1,548,752	138,945
Broome	13,864	4,254,717	321,348
Cattaraugus	6,886	2,582,491	230,836
Cayuga	4,680	1,754,230	146,043
Chautauqua	11,850	4,130,514	347,265
Chemung	6,695	1,755,541	136,616
Chenango	4,210	1,906,900	163,864
Clinton	6,643	3,198,590	282,493
Columbia	3,645	1,361,020	105,630
Cortland	3,297	1,128,561	106,439
Delaware	3,867	1,739,811	141,216
Dutchess	10,661	2,666,385	239,627
Erie	69,919	19,939,940	2,404,000
Essex	2,375	1,113,228	88,777
Franklin	4,392	2,027,453	190,923
Fulton	4,911	1,933,077	188,772
Genesee	3,113	987,365	89,110
Greene	3,423	1,449,081	133,895
Hamilton	339	154,609	12,167
Herkimer	5,649	2,139,286	176,938
Jefferson	7,285	2,639,616	219,402
Lewis	2,072	1,041,159	89,794
Livingston	3,570	1,390,063	112,426
Madison	3,799	1,463,974	149,048
Monroe	48,358	10,769,075	705,604
Montgomery	4,429	1,701,940	150,507
Nassau	22,160	3,221,545	243,040
Niagara	15,486	4,446,330	368,624
Oneida	18,457	6,120,660	584,020
Onondaga	28,873	7,520,720	538,547
Ontario	5,127	1,554,844	115,374
Orange	13,606	3,573,309	341,830
Orleans	2,787	1,236,104	100,913
Oswego	7,791	3,281,333	247,674
Otsego	3,436	1,507,446	152,763
Putnam	1,557	452,814	36,266
Rensselaer	7,675	2,282,094	191,282
Rockland	12,068	2,091,611	155,821
St. Lawrence	8,175	3,504,103	368,087
Saratoga	8,118	3,167,378	288,124
Schenectady	9,141	2,414,050	187,910
Schoharie	2,291	1,093,618	98,740
Schuyler	1,363	667,244	60,928
Seneca	1,831	635,631	60,002
Steuben	5,896	2,291,161	258,257
Suffolk	37,047	10,331,385	813,253
Sullivan	5,017	1,683,809	197,575
Tioga	3,168	1,460,365	127,020
Tompkins	4,459	1,234,152	96,438
Ulster	11,410	3,728,435	363,049
Warren	3,975	1,549,201	145,876
Washington	3,562	1,613,745	147,770
Wayne	4,957	1,824,274	118,205
Westchester	33,065	1,931,330	192,045
Wyoming	2,002	767,633	63,412
Yates	1,443	543,898	47,367

\* Please Note: The 2015 Home Energy Assistance Program Federal Fiscal Year is October 1, 2014 through September 30, 2015.

Table 26  
**HOME ENERGY ASSISTANCE PROGRAM - NON-EMERGENCY\***  
 Number, Total Dollar Amount and Average Dollar Amount of Benefits Authorized - Federal Fiscal Year to Date  
 December 2014

Local District	Autopay			Regular Non-Autopay		
	Benefits Authorized	Dollar Amount Authorized	Average Dollar Amount	Benefits Authorized	Dollar Amount Authorized	Average Dollar Amount
New York State	1,087,962	\$135,419,319	\$124	113,923	\$52,510,037	\$461
New York City	645,825	26,640,615	41	11,702	4,110,025	351
Rest of State	442,137	108,778,704	246	102,221	48,400,012	473
Albany	13,510	2,872,318	213	1,867	779,317	417
Allegany	2,225	856,135	385	1,367	649,501	475
Broome	10,714	2,837,083	265	3,138	1,401,764	447
Cattaraugus	4,831	1,616,736	335	2,031	933,358	460
Cayuga	3,422	1,145,103	335	1,246	593,559	476
Chautauqua	8,944	2,870,779	321	2,887	1,219,347	422
Chemung	5,265	1,157,371	220	1,419	578,872	408
Chenango	2,451	926,460	378	1,750	959,139	548
Clinton	4,715	2,072,556	440	1,904	1,098,576	577
Columbia	2,669	818,369	307	974	536,151	550
Cortland	2,442	721,389	295	854	406,886	476
Delaware	2,360	900,924	382	1,496	821,445	549
Dutchess	9,355	1,958,799	209	1,298	683,343	526
Erie	56,239	14,587,736	259	13,630	5,227,157	384
Essex	1,287	481,865	374	1,085	630,675	581
Franklin	2,806	1,104,917	394	1,585	922,063	582
Fulton	3,406	1,167,694	343	1,502	764,695	509
Genesee	2,417	665,531	275	696	321,834	462
Greene	2,239	784,565	350	1,176	649,282	552
Hamilton	181	62,774	347	158	91,835	581
Herkimer	3,860	1,256,552	326	1,784	871,514	489
Jefferson	5,617	1,819,315	324	1,664	816,042	490
Lewis	1,241	573,066	462	829	464,750	561
Livingston	2,658	937,469	353	899	431,331	480
Madison	2,807	939,112	335	991	521,862	527
Monroe	44,535	9,295,604	209	3,805	1,434,091	377
Montgomery	3,163	1,066,515	337	1,262	630,005	499
Nassau	20,009	2,235,818	112	2,151	985,727	458
Niagara	12,428	3,134,436	252	3,031	1,270,238	419
Oneida	13,649	3,866,133	283	4,796	2,227,217	464
Onondaga	24,158	5,645,215	234	4,698	1,852,083	394
Ontario	4,053	1,063,913	263	1,068	475,424	445
Orange	11,562	2,560,800	221	2,035	982,032	483
Orleans	1,742	698,000	401	1,031	497,810	483
Oswego	5,991	2,335,971	390	1,794	933,306	520
Otsego	2,263	846,323	374	1,169	654,929	560
Putnam	1,157	245,485	212	398	206,870	520
Rensselaer	6,148	1,516,193	247	1,524	757,570	497
Rockland	11,503	1,862,448	162	564	228,668	405
St. Lawrence	5,624	2,082,758	370	2,514	1,382,707	550
Saratoga	6,295	2,171,090	345	1,799	951,432	529
Schenectady	8,390	2,085,268	249	746	315,159	422
Schoharie	1,420	601,901	424	869	481,967	555
Schuyler	824	347,607	422	528	285,765	541
Seneca	1,338	377,559	282	491	253,084	515
Steuben	3,959	1,345,854	340	1,934	942,878	488
Suffolk	31,878	7,602,439	238	5,159	2,700,252	523
Sullivan	3,880	1,017,782	262	1,136	665,402	586
Tioga	2,154	900,037	418	1,010	548,160	543
Tompkins	3,657	840,256	230	798	389,883	489
Ulster	9,067	2,397,999	264	2,334	1,308,965	561
Warren	2,817	932,501	331	1,152	599,995	521
Washington	2,352	927,293	394	1,198	655,494	547
Wayne	3,967	1,347,038	340	984	467,255	475
Westchester	32,159	1,515,338	47	906	415,992	459
Wyoming	1,286	437,578	340	715	327,334	458
Yates	1,048	340,934	325	392	198,020	505

\* Please Note: The 2015 Home Energy Assistance Program Federal Fiscal Year is October 1, 2014 through September 30, 2015.

Table 27  
**HOME ENERGY ASSISTANCE PROGRAM - EMERGENCY\***  
 Number, Total Dollar Amount and Average Dollar Amount of Benefits Authorized - Federal Fiscal Year to Date  
 December 2014

Local District	Emergency			Furnace Replacement			Furnace Repair & Repair/Replacement Estimates		
	Benefits Authorized	Dollar Amount Authorized	Average Dollar Amount	Benefits Authorized	Dollar Amount Authorized	Average Dollar Amount	Benefits Authorized	Dollar Amount Authorized	Average Dollar Amount
New York State	0	\$0	\$0	282	\$898,040	\$3,185	247	\$135,542	\$549
New York City	0	0	0	3	19,398	6,466	0	0	0
Rest of State	0	0	0	279	878,642	3,149	247	135,542	549
Albany	0	0	0	6	31,231	5,205	8	2,434	304
Allegany	0	0	0	11	39,669	3,606	15	3,447	230
Broome	0	0	0	4	14,229	3,557	8	1,641	205
Cattaraugus	0	0	0	10	29,521	2,952	14	2,876	205
Cayuga	0	0	0	3	12,679	4,226	9	2,889	321
Chautauqua	0	0	0	6	15,179	2,530	13	25,209	1,939
Chemung	0	0	0	6	17,540	2,923	5	1,758	352
Chenango	0	0	0	7	19,017	2,717	2	2,284	1,142
Clinton	0	0	0	8	21,852	2,731	16	5,606	350
Columbia	0	0	0	2	6,500	3,250	0	0	0
Cortland	0	0	0	0	0	0	1	286	286
Delaware	0	0	0	3	13,928	4,643	8	3,514	439
Dutchess	0	0	0	1	6,500	6,500	7	17,743	2,535
Erie	0	0	0	40	120,102	3,003	10	4,945	495
Essex	0	0	0	0	0	0	3	688	229
Franklin	0	0	0	0	0	0	1	473	473
Fulton	0	0	0	0	0	0	3	688	229
Genesee	0	0	0	0	0	0	0	0	0
Greene	0	0	0	3	10,825	3,608	5	4,409	882
Hamilton	0	0	0	0	0	0	0	0	0
Herkimer	0	0	0	4	9,044	2,261	1	2,176	2,176
Jefferson	0	0	0	1	3,400	3,400	3	859	286
Lewis	0	0	0	1	2,900	2,900	1	443	443
Livingston	0	0	0	9	20,888	2,321	4	375	94
Madison	0	0	0	1	3,000	3,000	0	0	0
Monroe	0	0	0	15	38,430	2,562	3	950	317
Montgomery	0	0	0	1	3,920	3,920	3	1,500	500
Nassau	0	0	0	0	0	0	0	0	0
Niagara	0	0	0	12	38,175	3,181	15	3,481	232
Oneida	0	0	0	11	27,010	2,455	1	300	300
Onondaga	0	0	0	7	19,980	2,854	10	3,442	344
Ontario	0	0	0	4	13,730	3,433	2	1,777	889
Orange	0	0	0	8	30,072	3,759	1	405	405
Orleans	0	0	0	12	39,295	3,275	2	999	500
Oswego	0	0	0	4	10,786	2,696	2	1,270	635
Otsego	0	0	0	2	5,600	2,800	2	594	297
Putnam	0	0	0	0	0	0	2	459	229
Rensselaer	0	0	0	2	6,679	3,340	1	1,652	1,652
Rockland	0	0	0	0	0	0	1	495	495
St. Lawrence	0	0	0	9	28,489	3,165	28	10,149	362
Saratoga	0	0	0	15	43,015	2,868	9	1,841	205
Schenectady	0	0	0	3	11,658	3,886	2	1,965	982
Schoharie	0	0	0	2	9,750	4,875	0	0	0
Schuyler	0	0	0	10	33,547	3,355	1	325	325
Seneca	0	0	0	1	3,700	3,700	1	1,288	1,288
Steuben	0	0	0	1	1,941	1,941	2	488	244
Suffolk	0	0	0	6	27,212	4,535	4	1,482	371
Sullivan	0	0	0	0	0	0	1	625	625
Tioga	0	0	0	2	3,538	1,769	2	8,630	4,315
Tompkins	0	0	0	1	2,800	2,800	3	1,213	404
Ulster	0	0	0	6	19,954	3,326	3	1,517	506
Warren	0	0	0	5	16,425	3,285	1	280	280
Washington	0	0	0	9	28,175	3,131	3	2,783	928
Wayne	0	0	0	3	9,636	3,212	3	345	115
Westchester	0	0	0	0	0	0	0	0	0
Wyoming	0	0	0	1	2,721	2,721	0	0	0
Yates	0	0	0	1	4,400	4,400	2	544	272

\* Please Note: The 2015 Home Energy Assistance Program Federal Fiscal Year is October 1, 2014 through September 30, 2015.

Table 28  
**FEDERAL ALL FAMILIES WORK PARTICIPATION RATES**  
TANF, Safety Net Assistance MOE and Combined TANF and Safety Net Assistance MOE  
December 2014

Local District	Combined TANF and Safety Net Assistance MOE			TANF			Safety Net Assistance MOE		
	Rate	Numerator	Denominator	Rate	Numerator	Denominator	Rate	Numerator	Denominator
New York State*	31.9%	28,733	89,907	31.8%	18,633	58,576	32.2%	10,100	31,332
New York City*	33.1%	17,172	51,956	31.0%	9,737	31,561	36.5%	7,435	20,395
Rest of State	23.0%	7,931	34,499	22.0%	5,296	24,037	25.2%	2,635	10,462
Albany	18.3%	172	939	16.8%	111	661	21.9%	61	278
Allegany	17.4%	26	149	15.8%	18	114	22.9%	8	35
Broome	15.9%	158	993	15.2%	99	652	17.3%	59	341
Cattaraugus	19.1%	22	115	20.2%	19	94	14.3%	3	21
Cayuga	14.2%	34	240	11.9%	24	201	25.6%	10	39
Chautauqua	18.7%	176	940	18.9%	119	629	18.3%	57	311
Chemung	17.7%	28	158	18.1%	23	127	16.1%	5	31
Chenango	8.0%	9	112	5.1%	5	99	30.8%	4	13
Clinton	15.7%	27	172	18.7%	25	134	5.3%	2	38
Columbia	15.2%	24	158	14.2%	19	134	20.8%	5	24
Cortland	22.1%	34	154	22.4%	26	116	21.1%	8	38
Delaware	19.6%	10	51	18.4%	9	49	50.0%	1	2
Dutchess	11.3%	32	283	10.5%	21	200	13.3%	11	83
Erie	39.2%	2,030	5,182	37.5%	1,341	3,576	42.9%	689	1,606
Essex	3.8%	1	26	4.2%	1	24	0.0%	0	2
Franklin	11.0%	17	155	9.8%	12	122	15.2%	5	33
Fulton	33.3%	14	42	34.1%	14	41	0.0%	0	1
Genesee	15.6%	14	90	12.8%	10	78	33.3%	4	12
Greene	39.7%	46	116	38.1%	32	84	43.8%	14	32
Hamilton	0.0%	0	3	0.0%	0	3	N/A	0	0
Herkimer	11.5%	15	130	11.7%	13	111	10.5%	2	19
Jefferson	13.1%	31	236	14.1%	29	206	6.7%	2	30
Lewis	9.1%	2	22	10.0%	2	20	0.0%	0	2
Livingston	11.5%	31	269	12.1%	27	224	8.9%	4	45
Madison	15.9%	17	107	18.2%	16	88	5.3%	1	19
Monroe	17.1%	992	5,790	16.3%	605	3,716	18.7%	387	2,074
Montgomery	21.5%	43	200	20.6%	34	165	25.7%	9	35
Nassau	29.0%	624	2,155	28.1%	382	1,361	30.5%	242	794
Niagara	17.3%	172	997	16.9%	118	699	18.1%	54	298
Oneida	19.7%	312	1,581	18.2%	216	1,184	24.2%	96	397
Onondaga	12.4%	294	2,376	11.2%	194	1,736	15.6%	100	640
Ontario	18.6%	38	204	18.0%	31	172	21.9%	7	32
Orange	28.1%	270	962	28.4%	165	582	27.6%	105	380
Orleans	13.1%	23	176	14.1%	18	128	10.4%	5	48
Oswego	10.0%	58	582	9.8%	48	491	11.0%	10	91
Otsego	12.0%	3	25	12.5%	3	24	0.0%	0	1
Putnam	26.7%	4	15	30.8%	4	13	0.0%	0	2
Rensselaer	18.9%	155	822	17.9%	109	608	21.5%	46	214
Rockland	28.7%	79	275	29.7%	60	202	26.0%	19	73
St. Lawrence	20.6%	78	379	19.8%	60	303	23.7%	18	76
Saratoga	13.7%	7	51	14.0%	7	50	0.0%	0	1
Schenectady	17.0%	115	677	16.3%	77	472	18.5%	38	205
Schoharie	18.4%	7	38	17.1%	6	35	33.3%	1	3
Schuyler	15.1%	8	53	11.9%	5	42	27.3%	3	11
Seneca	22.2%	18	81	22.2%	14	63	22.2%	4	18
Steuben	29.4%	77	262	29.8%	57	191	28.2%	20	71
Suffolk	34.1%	826	2,423	32.8%	558	1,700	37.1%	268	723
Sullivan	16.0%	25	156	13.8%	15	109	21.3%	10	47
Tioga	15.3%	9	59	13.8%	8	58	100.0%	1	1
Tompkins	19.0%	39	205	17.4%	27	155	24.0%	12	50
Ulster	11.5%	71	619	12.6%	61	484	7.4%	10	135
Warren	7.0%	3	43	7.1%	3	42	0.0%	0	1
Washington	25.4%	15	59	25.0%	14	56	33.3%	1	3
Wayne	12.9%	18	140	13.7%	17	124	6.3%	1	16
Westchester	26.0%	568	2,182	29.3%	357	1,220	21.9%	211	962
Wyoming	18.2%	8	44	15.0%	6	40	50.0%	2	4
Yates	7.7%	2	26	8.0%	2	25	0.0%	0	1

\* Statewide and New York City participation rates are estimated from federal disaggregated reporting samples, which are the source of the rates used by the United States Department of Health and Human Services to determine if a state has met participation goals. Because the sample size is insufficient to permit rate estimates for non-New York City districts, rates for those districts are derived directly from automated systems data. Thus, Rest of State and New York City numerators and denominators will not sum to the statewide total. Estimates are from fourth quarter Federal Fiscal Year 2014 samples.

Table 29  
**WORK SANCTION STATUS BY PRESENCE IN FEDERAL ALL FAMILIES WORK PARTICIPATION CALCULATION**  
**TANF, Safety Net Assistance MOE and Combined TANF and Safety Net Assistance MOE**  
**December 2014**

Local District	Combined TANF and Safety Net Assistance MOE		TANF		Safety Net Assistance MOE	
	Sanctioned in the Denominator	Sanctioned Removed From Denominator	Sanctioned in the Denominator	Sanctioned Removed From Denominator	Sanctioned in the Denominator	Sanctioned Removed From Denominator
New York State*	6,633	5,611	2,905	2,810	3,728	2,801
New York City*	3,506	3,818	1,537	1,983	1,969	1,835
Rest of State	2,941	1,332	1,502	915	1,439	417
Albany	72	33	34	23	38	10
Allegany	12	8	5	6	7	2
Broome	142	39	65	25	77	14
Cattaraugus	7	3	4	2	3	1
Cayuga	27	11	15	9	12	2
Chautauqua	69	31	34	20	35	11
Chemung	22	7	9	5	13	2
Chenango	7	5	3	5	4	0
Clinton	6	4	4	3	2	1
Columbia	29	14	23	9	6	5
Cortland	3	0	1	0	2	0
Delaware	2	1	2	1	0	0
Dutchess	8	11	6	6	2	5
Erie	309	149	163	103	146	46
Essex	3	1	2	1	1	0
Franklin	16	5	11	4	5	1
Fulton	4	1	4	1	0	0
Genesee	8	2	3	0	5	2
Greene	12	7	7	6	5	1
Hamilton	0	0	0	0	0	0
Herkimer	7	3	4	3	3	0
Jefferson	25	18	19	14	6	4
Lewis	1	3	1	3	0	0
Livingston	4	6	3	4	1	2
Madison	5	2	4	2	1	0
Monroe	539	295	235	184	304	111
Montgomery	19	15	14	11	5	4
Nassau	189	69	109	43	80	26
Niagara	125	51	57	44	68	7
Oneida	123	59	76	41	47	18
Onondaga	348	106	174	75	174	31
Ontario	2	8	2	7	0	1
Orange	106	40	45	28	61	12
Orleans	12	6	7	4	5	2
Oswego	30	22	19	16	11	6
Otsego	0	1	0	1	0	0
Putnam	3	0	3	0	0	0
Rensselaer	58	28	28	20	30	8
Rockland	42	14	30	13	12	1
St. Lawrence	43	19	20	14	23	5
Saratoga	0	0	0	0	0	0
Schenectady	168	58	97	39	71	19
Schoharie	0	4	0	4	0	0
Schuyler	3	0	3	0	0	0
Seneca	2	2	1	1	1	1
Steuben	7	4	4	4	3	0
Suffolk	134	70	61	47	73	23
Sullivan	23	2	15	1	8	1
Tioga	0	3	0	2	0	1
Tompkins	30	3	12	3	18	0
Ulster	45	21	27	16	18	5
Warren	3	1	3	1	0	0
Washington	1	2	1	1	0	1
Wayne	7	7	3	6	4	1
Westchester	75	57	28	33	47	24
Wyoming	3	0	1	0	2	0
Yates	1	1	1	1	0	0

\* Statewide and New York City sanction rates are estimated from federal disaggregated reporting samples, which are the source of such data used by the United States Department of Health and Human Services to determine if a state has met participation goals. Because the sample size is insufficient to permit sanction estimates for non-New York City districts, data for those districts are derived directly from automated systems. Thus, Rest of State and New York City counts may not sum to the statewide total. This table uses a federal definition of sanction and includes only persons who are deemed a work eligible individual and are sanctioned for non-compliance for work or substance abuse requirements. Estimates are from fourth quarter Federal Fiscal Year 2014 samples.

Table 30  
 TEMPORARY ASSISTANCE CASES WITH EARNED INCOME  
 Cases, Average Gross Earned Income and Average Net Earned Income after Application of Disregards  
 December 2014

Local District	TANF			Safety Net Assistance MOE			Safety Net Assistance Non-MOE		
	Cases	Average Gross Earned Income	Average Net Earned Income	Cases	Average Gross Earned Income	Average Net Earned Income	Cases	Average Gross Earned Income	Average Net Earned Income
New York State	16,164	\$939	\$439	11,139	\$975	\$452	9,165	\$1,229	\$734
New York City	10,423	1,004	475	8,165	999	464	6,331	1,358	852
Rest of State	5,741	820	374	2,974	907	419	2,834	940	469
Albany	140	782	352	108	866	400	84	1,221	578
Allegany	25	483	200	12	681	306	22	414	199
Broome	121	765	344	91	833	379	78	683	336
Cattaraugus	21	788	356	2	990	459	11	609	278
Cayuga	30	748	336	10	577	251	13	510	246
Chautauqua	148	763	350	69	716	338	69	763	375
Chemung	17	886	436	7	758	336	10	519	265
Chenango	14	742	333	6	835	380	13	816	408
Clinton	22	807	366	4	545	295	10	860	649
Columbia	32	832	385	5	791	444	12	854	449
Cortland	28	671	295	11	634	277	14	475	253
Delaware	11	766	351	0	0	0	7	420	191
Dutchess	37	942	449	20	931	431	12	918	536
Erie	682	805	364	456	944	436	547	1,083	516
Essex	4	842	384	0	0	0	1	18	0
Franklin	16	697	312	7	636	278	14	590	301
Fulton	9	710	316	0	0	0	2	676	357
Genesee	12	724	324	4	1,210	571	5	700	347
Greene	26	824	375	12	1,069	499	16	997	538
Hamilton	1	200	185	0	0	0	1	236	146
Herkimer	17	559	239	4	559	239	9	526	226
Jefferson	27	647	285	7	592	256	25	700	368
Lewis	5	345	130	0	0	0	2	203	71
Livingston	48	749	336	12	856	391	15	935	434
Madison	15	847	386	1	240	150	0	0	0
Monroe	763	790	357	585	918	422	301	836	415
Montgomery	42	848	386	12	907	438	13	1,049	491
Nassau	484	879	411	234	926	428	158	782	437
Niagara	158	763	343	73	853	395	60	754	352
Oneida	263	747	331	126	836	374	217	1,118	533
Onondaga	385	779	351	177	900	415	247	1,149	558
Ontario	52	797	361	11	905	415	14	789	393
Orange	206	940	432	145	919	423	76	989	488
Orleans	17	695	308	11	899	412	17	683	352
Oswego	72	749	336	17	851	389	34	731	340
Otsego	1	565	242	0	0	0	7	650	447
Putnam	6	759	341	0	0	0	5	521	431
Rensselaer	154	773	349	72	747	335	65	956	444
Rockland	165	895	406	25	883	400	67	1,113	537
St. Lawrence	56	567	244	17	737	330	60	651	309
Saratoga	10	881	405	0	0	0	5	840	483
Schenectady	116	873	400	66	918	423	45	1,044	535
Schoharie	11	725	324	2	1,091	511	6	528	264
Schuyler	11	606	263	6	960	444	11	573	250
Seneca	20	717	321	7	921	424	9	973	591
Steuben	47	718	322	25	828	378	26	677	339
Suffolk	514	968	456	264	1,050	493	209	1,071	612
Sullivan	25	705	313	11	934	430	9	621	408
Tioga	11	831	378	1	899	413	1	208	118
Tompkins	42	728	305	16	851	385	18	501	243
Ulster	113	757	340	37	742	337	67	752	388
Warren	5	729	326	0	0	0	1	136	46
Washington	15	841	383	2	1,031	480	4	889	427
Wayne	16	775	329	2	648	370	4	596	325
Westchester	446	904	416	181	965	460	79	830	431
Wyoming	4	652	286	1	1,432	685	2	657	332
Yates	3	727	325	0	0	0	5	748	381



## **2014 Summary**

Table A-1  
Comparison of Monthly Average Cases and Recipients, and Annual Expenditures for 2014 and 2013  
2014 SUMMARY

Program	2014	2013	Absolute Change	Percentage Change
New York State				(%)
Temporary Assistance				
Cases	296,157	302,797	(6,640)	(2.19)
Recipients	565,859	578,461	(12,602)	(2.18)
Expenditures	\$2,217,173,489	\$2,239,850,475	(\$22,676,986)	(1.01)
Supplemental Nutrition Assistance Program				
Households	1,684,597	1,719,970	(35,372)	(2.06)
Recipients	3,092,073	3,180,751	(88,677)	(2.79)
Expenditures	\$5,135,576,347	\$5,617,041,885	(\$481,465,538)	(8.57)
Supplemental Security Income				
Recipients	696,423	692,896	3,527	0.51
Expenditures	\$4,911,022,249	\$4,857,513,561	\$53,508,688	1.10
New York City				
Temporary Assistance				
Cases	181,200	188,433	(7,233)	(3.84)
Recipients	335,707	349,950	(14,243)	(4.07)
Expenditures	\$1,324,850,287	\$1,368,844,144	(\$43,993,857)	(3.21)
Supplemental Nutrition Assistance Program				
Households	978,645	1,032,251	(53,606)	(5.19)
Recipients	1,758,605	1,867,061	(108,457)	(5.81)
Expenditures	\$3,066,495,622	\$3,470,999,524	(\$404,503,902)	(11.65)
Supplemental Security Income				
Recipients	425,123	425,536	(414)	(0.10)
Expenditures	\$3,033,542,880	\$3,020,242,731	\$13,300,149	0.44
Rest of State				
Temporary Assistance				
Cases	114,957	114,364	593	0.52
Recipients	230,152	228,511	1,641	0.72
Expenditures	\$892,323,202	\$871,006,331	\$21,316,871	2.45
Supplemental Nutrition Assistance Program				
Households	705,952	687,719	18,233	2.65
Recipients	1,333,469	1,313,690	19,779	1.51
Expenditures	\$2,069,080,725	\$2,146,042,361	(\$76,961,636)	(3.59)
Supplemental Security Income				
Recipients	271,300	267,360	3,940	1.47
Expenditures	\$1,877,479,369	\$1,837,270,830	\$40,208,539	2.19

Note: Supplemental Security Income data listed here do not include Mental Hygiene data.  
See Table A-11 for total Supplemental Security Income data.

Table A-2  
**TEMPORARY ASSISTANCE**  
 Year to Year Comparison by Local District  
 Monthly Average Cases and Recipients, and Annual Expenditures  
 2014 SUMMARY

Local District	2014			2013			Percentage Change		
	Cases	Recipients	Expenditures	Cases	Recipients	Expenditures	Cases (%)	Recipients (%)	Expenditures (%)
New York State	296,157	565,859	\$2,217,173,489	302,797	578,461	\$2,239,850,475	(2.19)	(2.18)	(1.01)
New York City	181,200	335,707	1,324,850,287	188,433	349,950	1,368,844,144	(3.84)	(4.07)	(3.21)
Rest of State	114,957	230,152	892,323,202	114,364	228,511	871,006,331	0.52	0.72	2.45
Albany	2,882	6,274	22,989,700	3,083	6,710	24,922,553	(6.49)	(6.50)	(7.76)
Allegany	509	988	2,955,875	555	1,062	3,191,029	(8.33)	(6.98)	(7.37)
Broome	3,735	7,199	24,926,179	3,876	7,534	25,630,728	(3.65)	(4.45)	(2.75)
Cattaraugus	598	975	3,768,438	544	859	3,136,003	9.91	13.56	20.17
Cayuga	824	1,535	5,787,720	753	1,445	5,282,655	9.41	6.20	9.56
Chautauqua	2,681	5,783	17,201,457	2,647	5,773	17,348,485	1.28	0.16	(0.85)
Chemung	847	1,485	5,491,816	820	1,510	5,288,152	3.30	(1.68)	3.85
Chenango	436	765	2,674,295	398	702	2,434,031	9.44	9.00	9.87
Clinton	880	1,460	6,177,477	929	1,585	6,689,701	(5.32)	(7.90)	(7.66)
Columbia	571	1,084	4,056,435	578	1,081	4,223,086	(1.28)	0.28	(3.95)
Cortland	674	1,161	4,509,171	617	1,128	4,119,647	9.24	2.92	9.46
Delaware	315	541	1,912,251	301	491	1,763,248	4.82	10.22	8.45
Dutchess	1,389	2,525	12,897,797	1,433	2,662	13,281,775	(3.10)	(5.15)	(2.89)
Erie	14,827	32,404	93,088,242	13,972	30,178	86,551,881	6.12	7.38	7.55
Essex	140	226	998,714	142	241	1,026,784	(1.58)	(6.20)	(2.73)
Franklin	529	997	3,304,830	523	971	3,197,209	1.24	2.66	3.37
Fulton	362	587	2,337,159	350	623	2,334,324	3.67	(5.79)	0.12
Genesee	334	622	2,199,353	339	634	2,355,834	(1.33)	(1.95)	(6.64)
Greene	512	963	3,668,070	585	1,119	4,109,482	(12.45)	(13.97)	(10.74)
Hamilton	17	27	79,886	16	23	76,747	11.29	16.42	4.09
Herkimer	528	953	3,296,684	520	950	3,183,745	1.65	0.34	3.55
Jefferson	1,096	1,812	7,345,751	950	1,539	6,402,951	15.34	17.77	14.72
Lewis	123	204	751,231	120	191	738,060	2.78	7.08	1.78
Livingston	865	1,645	5,579,615	804	1,528	5,356,685	7.57	7.63	4.16
Madison	400	723	2,692,980	388	725	2,683,222	3.14	(0.33)	0.36
Monroe	16,353	33,448	110,864,883	16,642	33,649	111,259,873	(1.74)	(0.60)	(0.36)
Montgomery	571	1,367	3,938,745	572	1,325	3,963,890	(0.25)	3.16	(0.63)
Nassau	7,468	13,659	61,400,645	7,493	13,740	62,553,583	(0.34)	(0.59)	(1.84)
Niagara	3,337	6,417	19,468,279	3,256	6,262	19,549,959	2.49	2.48	(0.42)
Oneida	4,538	10,673	30,266,777	4,357	10,193	28,202,055	4.16	4.70	7.32
Onondaga	7,420	16,130	47,568,599	7,598	16,199	47,736,948	(2.35)	(0.43)	(0.35)
Ontario	897	1,547	6,241,175	830	1,460	5,553,221	8.11	5.94	12.39
Orange	3,035	6,407	30,245,378	3,310	7,025	32,444,669	(8.32)	(8.79)	(6.78)
Orleans	740	1,351	4,669,461	684	1,234	4,252,772	8.18	9.49	9.80
Oswego	1,743	3,672	11,291,813	1,657	3,481	10,798,269	5.15	5.47	4.57
Otsego	223	323	2,202,099	243	384	2,399,907	(8.33)	(15.72)	(8.24)
Putnam	144	206	1,411,443	129	181	1,491,993	11.30	14.21	(5.40)
Rensselaer	1,790	4,407	14,051,806	1,739	4,314	13,327,147	2.90	2.15	5.44
Rockland	1,585	3,096	11,596,749	1,690	3,357	12,654,528	(6.18)	(7.78)	(8.36)
St. Lawrence	1,335	2,638	8,213,185	1,252	2,464	7,792,169	6.59	7.06	5.40
Saratoga	421	625	3,104,333	400	573	3,011,513	5.42	8.97	3.08
Schenectady	2,004	4,395	15,565,117	1,910	4,156	14,439,836	4.91	5.75	7.79
Schoharie	223	388	1,649,407	202	348	1,496,641	10.50	11.34	10.21
Schuyler	235	446	1,626,821	235	430	1,630,355	0.21	3.76	(0.22)
Seneca	277	527	1,882,661	240	434	1,577,712	15.79	21.42	19.33
Steuben	1,020	1,948	6,366,315	984	1,892	6,243,646	3.66	2.97	1.96
Suffolk	10,687	19,474	129,220,558	10,612	19,518	116,106,071	0.71	(0.23)	11.30
Sullivan	773	1,595	5,809,284	1,003	2,068	7,534,260	(22.95)	(22.85)	(22.90)
Tioga	393	660	2,785,867	394	656	2,847,699	(0.34)	0.60	(2.17)
Tompkins	901	1,561	5,928,903	885	1,563	5,855,652	1.78	(0.15)	1.25
Ulster	2,228	4,127	18,497,359	2,173	4,073	17,093,683	2.55	1.33	8.21
Warren	243	396	1,954,017	241	387	1,982,469	0.83	2.20	(1.44)
Washington	342	594	2,554,854	354	592	3,039,957	(3.28)	0.44	(15.96)
Wayne	655	1,105	4,162,285	641	1,076	4,011,142	2.24	2.68	3.77
Westchester	6,954	13,440	84,766,237	7,047	13,639	82,604,177	(1.33)	(1.46)	2.62
Wyoming	193	334	1,207,235	199	344	1,243,318	(3.06)	(2.86)	(2.90)
Yates	159	260	1,119,786	153	230	979,200	3.76	13.35	14.36

Table A-3  
**SUPPLEMENTAL NUTRITION ASSISTANCE PROGRAM**  
 Year to Year Comparison by Local District  
 Monthly Average Households and Persons, and Annual Expenditures  
 2014 SUMMARY

Local District	2014			2013			Percentage Change		
	Households	Persons	Expenditures	Households	Persons	Expenditures	Households (%)	Persons (%)	Expenditures (%)
New York State	1,684,597	3,092,073	5,135,576,347	1,719,970	3,180,751	5,617,041,885	(2.06)	(2.79)	(8.57)
New York City	978,645	1,758,605	3,066,495,622	1,032,251	1,867,061	3,470,999,524	(5.19)	(5.81)	(11.65)
Rest of State	705,952	1,333,469	2,069,080,725	687,719	1,313,690	2,146,042,361	2.65	1.51	(3.59)
Albany	19,767	36,990	57,323,897	19,660	37,090	60,800,154	0.54	(0.27)	(5.72)
Allegany	3,500	6,792	9,413,716	3,533	6,928	10,440,287	(0.94)	(1.96)	(9.83)
Broome	16,993	31,453	48,344,995	16,847	31,195	51,371,508	0.87	0.83	(5.89)
Cattaraugus	6,453	12,700	17,998,671	6,195	12,270	18,577,623	4.17	3.51	(3.12)
Cayuga	5,601	10,950	16,175,238	5,455	10,821	17,198,782	2.68	1.20	(5.95)
Chautauqua	14,087	27,533	42,082,009	13,481	26,760	42,680,301	4.49	2.89	(1.40)
Chemung	8,151	15,999	24,640,340	8,001	16,008	25,774,149	1.88	(0.06)	(4.40)
Chenango	4,065	7,930	11,480,573	4,083	8,046	12,253,394	(0.43)	(1.44)	(6.31)
Clinton	6,946	12,079	17,906,558	6,908	12,245	18,963,503	0.55	(1.35)	(5.57)
Columbia	3,781	6,598	10,293,144	3,614	6,326	10,446,721	4.62	4.31	(1.47)
Cortland	3,851	7,181	10,464,949	3,887	7,403	11,389,212	(0.93)	(3.01)	(8.12)
Delaware	3,366	6,685	9,700,342	3,223	6,418	9,982,170	4.44	4.15	(2.82)
Dutchess	13,600	24,577	39,205,481	13,664	24,899	42,268,008	(0.46)	(1.30)	(7.25)
Erie	84,950	159,050	246,381,477	83,028	156,469	252,768,969	2.31	1.65	(2.53)
Essex	2,123	3,813	5,610,861	2,115	3,871	6,051,806	0.36	(1.50)	(7.29)
Franklin	4,083	7,562	11,636,808	4,017	7,449	12,393,704	1.64	1.51	(6.11)
Fulton	5,125	9,648	14,316,790	5,045	9,578	15,317,792	1.57	0.73	(6.53)
Genesee	3,315	6,179	8,984,177	3,270	6,199	9,750,847	1.38	(0.33)	(7.86)
Greene	3,384	6,051	9,444,262	3,478	6,335	10,472,077	(2.72)	(4.49)	(9.81)
Hamilton	260	464	697,211	246	438	699,216	5.97	5.82	(0.29)
Herkimer	5,511	10,573	15,418,973	5,455	10,601	16,243,063	1.03	(0.26)	(5.07)
Jefferson	8,255	15,755	23,316,226	8,259	16,027	24,804,676	(0.05)	(1.70)	(6.00)
Lewis	1,854	3,664	4,909,463	1,859	3,682	5,122,473	(0.28)	(0.49)	(4.16)
Livingston	4,012	7,519	11,319,670	3,851	7,311	11,513,992	4.18	2.85	(1.69)
Madison	4,669	9,308	13,940,773	4,585	9,340	14,437,610	1.84	(0.35)	(3.44)
Monroe	65,659	121,674	193,453,906	63,654	119,326	199,900,829	3.15	1.97	(3.23)
Montgomery	4,816	9,958	14,968,345	4,728	9,966	15,995,701	1.86	(0.07)	(6.42)
Nassau	41,410	67,831	109,188,931	41,068	68,532	117,653,666	0.83	(1.02)	(7.19)
Niagara	17,935	32,575	50,179,013	17,088	31,392	51,261,089	4.96	3.77	(2.11)
Oneida	20,601	41,775	62,784,571	20,396	41,590	65,476,479	1.01	0.45	(4.11)
Onondaga	38,416	74,297	113,820,525	38,007	74,503	119,808,177	1.07	(0.28)	(5.00)
Ontario	5,740	10,438	15,572,714	5,628	10,352	16,451,445	2.00	0.84	(5.34)
Orange	20,518	48,038	75,095,158	20,012	46,893	77,207,607	2.53	2.44	(2.74)
Orleans	3,297	6,399	9,242,339	3,202	6,202	9,699,881	2.98	3.18	(4.72)
Oswego	9,773	20,694	30,573,454	9,527	20,584	31,787,635	2.58	0.53	(3.82)
Otsego	3,313	6,244	8,833,382	3,272	6,316	9,416,306	1.24	(1.14)	(6.19)
Putnam	1,764	2,795	4,464,171	1,706	2,708	4,496,801	3.41	3.22	(0.73)
Rensselaer	9,422	18,913	28,386,946	9,376	19,099	30,340,461	0.49	(0.98)	(6.44)
Rockland	17,298	47,534	73,700,442	16,943	46,255	75,671,136	2.09	2.77	(2.60)
St. Lawrence	8,630	17,023	24,741,162	8,541	17,023	25,872,596	1.04	0.00	(4.37)
Saratoga	9,143	16,365	24,083,712	9,012	16,421	25,365,935	1.45	(0.34)	(5.05)
Schenectady	13,474	25,592	40,866,447	12,988	25,160	42,107,178	3.73	1.72	(2.95)
Schoharie	2,052	3,880	5,695,543	2,022	3,892	5,932,845	1.50	(0.30)	(4.00)
Schuyler	1,309	2,601	3,581,945	1,287	2,606	3,803,617	1.70	(0.18)	(5.83)
Seneca	1,923	3,680	5,501,363	1,827	3,549	5,636,609	5.25	3.69	(2.40)
Steuben	6,367	12,942	18,004,790	6,305	12,934	19,043,198	0.98	0.06	(5.45)
Suffolk	74,156	128,330	211,984,239	68,034	119,553	207,962,288	9.00	7.34	1.93
Sullivan	6,262	12,459	19,889,001	6,682	13,487	22,697,668	(6.29)	(7.62)	(12.37)
Tioga	3,178	6,482	8,928,548	3,083	6,461	9,403,378	3.08	0.33	(5.05)
Tompkins	5,294	9,341	14,349,965	5,255	9,420	15,305,440	0.74	(0.84)	(6.24)
Ulster	12,291	21,835	34,595,323	12,030	21,582	35,833,780	2.17	1.17	(3.46)
Warren	4,132	7,569	11,049,385	4,031	7,473	11,475,998	2.50	1.29	(3.72)
Washington	4,058	7,886	11,346,674	3,978	7,862	11,964,834	1.99	0.31	(5.17)
Wayne	5,768	10,901	15,907,519	5,735	10,954	16,537,695	0.57	(0.49)	(3.81)
Westchester	47,073	84,241	138,828,395	45,319	81,671	140,850,921	3.87	3.15	(1.44)
Wyoming	1,776	3,418	4,705,036	1,817	3,470	5,315,283	(2.25)	(1.49)	(11.48)
Yates	1,401	2,708	3,751,177	1,404	2,746	4,043,848	(0.20)	(1.37)	(7.24)

Table A-4  
**SUPPLEMENTAL SECURITY INCOME**  
 Year to Year Comparison by Local District  
 Monthly Average Recipients and Annual Expenditures  
 2014 SUMMARY

Local District	2014		2013		Percentage Change	
	Recipients	Expenditures	Recipients	Expenditures	Recipients (%)	Expenditures (%)
New York State	701,600	\$4,937,873,247	698,479	\$4,885,932,435	0.45	1.06
New York City	425,123	3,033,542,880	425,536	3,020,242,731	(0.10)	0.44
Rest of State	271,300	1,877,479,369	267,360	1,837,270,830	1.47	2.19
Albany	7,425	50,836,949	7,365	49,941,667	0.81	1.79
Allegany	1,587	10,695,575	1,578	10,722,973	0.58	(0.26)
Broome	7,186	50,435,560	7,006	48,783,158	2.57	3.39
Cattaraugus	2,650	17,687,456	2,631	17,867,534	0.71	(1.01)
Cayuga	1,931	13,266,712	1,935	13,141,253	(0.19)	0.95
Chautauqua	5,102	35,260,385	5,030	34,856,021	1.45	1.16
Chemung	3,586	23,695,152	3,561	23,725,351	0.69	(0.13)
Chenango	1,631	10,782,202	1,656	10,979,047	(1.51)	(1.79)
Clinton	3,104	20,801,866	3,071	20,391,822	1.06	2.01
Columbia	1,700	11,924,392	1,652	11,355,733	2.88	5.01
Cortland	1,313	8,800,212	1,301	8,569,420	0.94	2.69
Delaware	1,297	8,493,421	1,260	8,036,945	2.96	5.68
Dutchess	5,866	41,267,727	5,712	40,710,598	2.69	1.37
Erie	30,170	213,873,092	29,778	211,250,243	1.31	1.24
Essex	1,111	7,436,084	1,105	7,382,150	0.55	0.73
Franklin	1,817	12,645,136	1,802	12,557,082	0.81	0.70
Fulton	2,165	14,859,276	2,126	14,123,604	1.83	5.21
Genesee	1,279	8,761,810	1,243	8,518,333	2.93	2.86
Greene	1,493	10,103,246	1,440	9,715,419	3.68	3.99
Hamilton	61	366,740	57	329,374	5.96	11.34
Herkimer	1,775	11,499,241	1,761	11,179,112	0.82	2.86
Jefferson	2,964	19,645,235	2,958	19,656,626	0.23	(0.06)
Lewis	669	4,260,751	690	4,498,720	(3.01)	(5.29)
Livingston	1,275	8,958,648	1,219	8,524,886	4.54	5.09
Madison	1,465	9,709,017	1,432	9,347,019	2.29	3.87
Monroe	26,998	199,743,263	26,402	194,371,763	2.26	2.76
Montgomery	2,014	14,098,649	1,953	13,290,715	3.14	6.08
Nassau	18,523	122,145,874	18,333	120,509,844	1.04	1.36
Niagara	6,308	44,351,988	6,191	43,660,094	1.88	1.58
Oneida	8,710	61,050,227	8,625	60,094,083	0.98	1.59
Onondaga	15,058	109,347,001	14,850	105,646,803	1.40	3.50
Ontario	1,983	13,146,717	1,997	13,157,630	(0.70)	(0.08)
Orange	7,346	51,170,232	7,224	49,729,193	1.69	2.90
Orleans	1,031	6,959,744	1,006	6,839,880	2.46	1.75
Oswego	3,502	24,508,244	3,464	23,885,350	1.10	2.61
Otsego	1,481	9,996,313	1,458	9,561,291	1.61	4.55
Putnam	913	5,793,994	892	5,749,620	2.40	0.77
Rensselaer	4,665	33,282,078	4,471	31,299,863	4.33	6.33
Rockland	5,452	37,849,627	5,375	37,397,573	1.43	1.21
St. Lawrence	4,000	26,714,434	3,983	26,548,837	0.43	0.62
Saratoga	3,135	20,636,337	3,063	19,588,619	2.34	5.35
Schenectady	5,728	41,068,860	5,526	39,284,662	3.66	4.54
Schoharie	762	5,158,742	747	4,876,255	2.02	5.79
Schuyler	476	3,153,757	454	2,998,414	4.89	5.18
Seneca	818	5,526,925	800	5,440,498	2.21	1.59
Steuben	3,221	21,412,281	3,254	21,757,515	(1.01)	(1.59)
Suffolk	22,869	155,474,366	22,778	153,826,661	0.40	1.07
Sullivan	2,788	18,551,675	2,794	18,315,005	(0.23)	1.29
Tioga	1,247	8,472,159	1,205	7,972,069	3.53	6.27
Tompkins	1,707	11,739,154	1,725	11,344,510	(1.03)	3.48
Ulster	4,447	30,209,234	4,390	29,528,629	1.31	2.30
Warren	1,730	11,103,808	1,733	10,853,338	(0.20)	2.31
Washington	1,684	10,983,238	1,656	10,607,775	1.72	3.54
Wayne	2,270	15,675,049	2,218	15,482,629	2.36	1.24
Westchester	18,561	123,740,903	18,185	119,399,556	2.07	3.64
Wyoming	707	4,613,988	703	4,575,671	0.60	0.84
Yates	548	3,734,623	539	3,512,395	1.56	6.33
Mental Hygiene	5,178	26,850,998	5,583	28,418,874	(7.27)	(5.52)

Note: Only New York State includes Mental Hygiene.

Table A-5  
**TEMPORARY ASSISTANCE**  
 Monthly Average Cases, Recipients, Children and Adults, and Annual Expenditures by Local District  
 2014 SUMMARY

Local District	Temporary Assistance				
	Monthly Average				Total Expenditures
	Cases	Recipients	Children	Adults	
New York State	296,157	565,859	299,378	266,482	\$2,217,173,489
New York City	181,200	335,707	169,696	166,011	1,324,850,287
Rest of State	114,957	230,152	129,682	100,470	892,323,202
Albany	2,882	6,274	3,771	2,503	22,989,700
Allegany	509	988	549	439	2,955,875
Broome	3,735	7,199	4,087	3,112	24,926,179
Cattaraugus	598	975	563	413	3,768,438
Cayuga	824	1,535	827	707	5,787,720
Chautauqua	2,681	5,783	3,335	2,448	17,201,457
Chemung	847	1,485	945	540	5,491,816
Chenango	436	765	436	329	2,674,295
Clinton	880	1,460	844	615	6,177,477
Columbia	571	1,084	585	499	4,056,435
Cortland	674	1,161	559	603	4,509,171
Delaware	315	541	312	229	1,912,251
Dutchess	1,389	2,525	1,581	944	12,897,797
Erie	14,827	32,404	18,752	13,652	93,088,242
Essex	140	226	136	90	998,714
Franklin	529	997	518	479	3,304,830
Fulton	362	587	335	252	2,337,159
Genesee	334	622	353	269	2,199,353
Greene	512	963	496	467	3,668,070
Hamilton	17	27	12	15	79,886
Herkimer	528	953	550	403	3,296,684
Jefferson	1,096	1,812	867	945	7,345,751
Lewis	123	204	130	74	751,231
Livingston	865	1,645	820	825	5,579,615
Madison	400	723	415	308	2,692,980
Monroe	16,353	33,448	18,595	14,853	110,864,883
Montgomery	571	1,367	883	484	3,938,745
Nassau	7,468	13,659	7,222	6,437	61,400,645
Niagara	3,337	6,417	3,465	2,951	19,468,279
Oneida	4,538	10,673	6,195	4,478	30,266,777
Onondaga	7,420	16,130	9,449	6,681	47,568,599
Ontario	897	1,547	831	716	6,241,175
Orange	3,035	6,407	3,753	2,654	30,245,378
Orleans	740	1,351	733	619	4,669,461
Oswego	1,743	3,672	2,056	1,615	11,291,813
Otsego	223	323	163	161	2,202,099
Putnam	144	206	102	105	1,411,443
Rensselaer	1,790	4,407	2,793	1,614	14,051,806
Rockland	1,585	3,096	1,833	1,263	11,596,749
St. Lawrence	1,335	2,638	1,398	1,240	8,213,185
Saratoga	421	625	385	240	3,104,333
Schenectady	2,004	4,395	2,731	1,664	15,565,117
Schoharie	223	388	209	179	1,649,407
Schuyler	235	446	225	222	1,626,821
Seneca	277	527	286	242	1,882,661
Steuben	1,020	1,948	1,070	878	6,366,315
Suffolk	10,687	19,474	9,840	9,634	129,220,558
Sullivan	773	1,595	1,013	582	5,809,284
Tioga	393	660	439	221	2,785,867
Tompkins	901	1,561	751	810	5,928,903
Ulster	2,228	4,127	2,141	1,986	18,497,359
Warren	243	396	229	167	1,954,017
Washington	342	594	377	217	2,554,854
Wayne	655	1,105	616	489	4,162,285
Westchester	6,954	13,440	7,780	5,660	84,766,237
Wyoming	193	334	192	142	1,207,235
Yates	159	260	155	106	1,119,786

Table A-6  
**FAMILY ASSISTANCE-FP**  
 Monthly Average Cases, Recipients, Children and Adults, and Annual Expenditures by Local District  
 2014 SUMMARY

Local District	Family Assistance-FP					Total Expenditures
	Monthly Average					
	Cases	Recipients	Children	Adults		
New York State	109,263	251,491	187,601	63,890	\$835,084,865	
New York City	59,556	135,674	102,130	33,543	428,362,350	
Rest of State	49,706	115,817	85,470	30,347	406,722,515	
Albany	1,410	3,303	2,420	883	11,177,841	
Allegany	234	540	399	141	1,458,970	
Broome	1,616	3,544	2,666	878	11,375,192	
Cattaraugus	295	578	468	110	1,938,725	
Cayuga	363	834	607	227	2,612,913	
Chautauqua	1,267	3,031	2,166	865	8,539,509	
Chemung	443	883	737	146	2,924,331	
Chenango	221	467	356	111	1,457,608	
Clinton	452	892	709	183	3,008,795	
Columbia	261	623	457	166	1,788,407	
Cortland	260	583	415	169	1,844,469	
Delaware	168	360	285	75	1,082,881	
Dutchess	700	1,491	1,207	285	7,098,239	
Erie	6,394	15,388	11,196	4,192	42,895,167	
Essex	80	154	125	29	503,019	
Franklin	222	512	367	145	1,400,860	
Fulton	175	367	298	68	1,167,519	
Genesee	161	365	273	92	1,063,081	
Greene	193	447	325	122	1,439,441	
Hamilton	8	13	10	4	37,972	
Herkimer	280	593	455	138	1,764,733	
Jefferson	421	911	682	229	2,674,856	
Lewis	71	143	117	26	445,713	
Livingston	379	930	631	299	2,711,297	
Madison	196	419	319	100	1,291,396	
Monroe	6,497	15,584	11,184	4,400	49,007,773	
Montgomery	369	943	690	252	2,545,732	
Nassau	2,871	6,411	4,799	1,612	25,677,801	
Niagara	1,377	3,121	2,270	851	8,761,539	
Oneida	1,999	5,261	3,742	1,519	14,380,127	
Onondaga	3,403	8,262	5,983	2,279	23,053,432	
Ontario	411	882	665	216	2,786,727	
Orange	1,314	3,128	2,339	789	13,379,797	
Orleans	309	665	494	171	2,078,411	
Oswego	826	2,038	1,452	586	5,748,774	
Otsego	98	178	145	34	872,365	
Putnam	61	113	93	21	460,557	
Rensselaer	1,034	2,483	1,753	730	7,903,392	
Rockland	703	1,610	1,311	299	5,675,329	
St. Lawrence	575	1,312	939	373	3,721,113	
Saratoga	222	402	348	54	1,426,097	
Schenectady	1,019	2,413	1,805	608	7,929,417	
Schoharie	103	225	174	51	710,542	
Schuyler	94	225	160	65	666,529	
Seneca	120	285	207	78	809,152	
Steuben	439	1,042	770	272	2,929,006	
Suffolk	3,915	9,266	6,795	2,471	55,242,718	
Sullivan	395	882	696	186	2,843,216	
Tioga	250	481	398	84	1,700,941	
Tompkins	328	704	502	203	2,285,793	
Ulster	968	2,174	1,534	640	8,500,507	
Warren	126	259	206	53	930,346	
Washington	182	386	322	64	1,285,593	
Wayne	321	678	522	156	2,173,291	
Westchester	2,927	6,665	5,191	1,474	36,332,913	
Wyoming	99	209	163	45	654,210	
Yates	84	157	129	28	546,441	

Table A-7  
SAFETY NET ASSISTANCE\*  
Monthly Average Cases, Recipients, Children and Adults, and Annual Expenditures by Local District  
2014 SUMMARY

Local District	Safety Net Assistance					Total Expenditures
	Monthly Average					
	Cases	Recipients	Children	Adults		
New York State	186,894	314,369	111,777	202,592	\$1,382,088,624	
New York City	121,643	200,034	67,566	132,468	896,487,937	
Rest of State	65,251	114,335	44,211	70,124	485,600,687	
Albany	1,472	2,971	1,351	1,620	11,811,859	
Allegany	275	448	150	298	1,496,905	
Broome	2,118	3,655	1,421	2,234	13,550,987	
Cattaraugus	303	397	94	303	1,829,713	
Cayuga	461	701	220	481	3,174,807	
Chautauqua	1,414	2,752	1,169	1,583	8,661,948	
Chemung	404	601	208	394	2,567,485	
Chenango	215	298	80	218	1,216,687	
Clinton	428	568	135	433	3,168,682	
Columbia	309	461	128	334	2,268,028	
Cortland	414	578	144	434	2,664,702	
Delaware	147	181	27	154	829,370	
Dutchess	689	1,033	374	660	5,799,558	
Erie	8,432	17,016	7,557	9,460	50,193,075	
Essex	61	72	11	61	495,695	
Franklin	307	485	151	333	1,903,970	
Fulton	187	220	37	184	1,169,640	
Genesee	174	256	79	177	1,136,272	
Greene	319	517	171	345	2,228,629	
Hamilton	10	13	2	11	41,914	
Herkimer	249	360	95	265	1,531,951	
Jefferson	675	901	185	716	4,670,895	
Lewis	52	61	13	48	305,518	
Livingston	486	715	189	525	2,868,318	
Madison	204	304	96	208	1,401,584	
Monroe	9,856	17,864	7,411	10,453	61,857,110	
Montgomery	201	424	192	232	1,393,013	
Nassau	4,597	7,248	2,423	4,825	35,722,844	
Niagara	1,960	3,296	1,195	2,101	10,706,740	
Oneida	2,540	5,412	2,453	2,960	15,886,650	
Onondaga	4,016	7,868	3,466	4,402	24,515,167	
Ontario	486	665	165	500	3,454,448	
Orange	1,721	3,279	1,414	1,865	16,865,581	
Orleans	430	687	239	448	2,591,050	
Oswego	917	1,634	604	1,030	5,543,039	
Otsego	125	145	18	127	1,329,734	
Putnam	83	93	9	84	950,886	
Rensselaer	756	1,923	1,040	884	6,148,414	
Rockland	882	1,486	521	965	5,921,420	
St. Lawrence	760	1,326	459	867	4,492,072	
Saratoga	199	222	36	186	1,678,236	
Schenectady	984	1,982	926	1,056	7,635,700	
Schoharie	120	163	35	128	938,865	
Schuyler	142	221	65	157	960,292	
Seneca	157	243	79	164	1,073,509	
Steuben	581	906	300	606	3,437,309	
Suffolk	6,772	10,208	3,045	7,163	73,977,840	
Sullivan	378	713	317	396	2,966,068	
Tioga	143	179	42	137	1,084,926	
Tompkins	573	856	249	607	3,643,110	
Ulster	1,261	1,953	607	1,346	9,996,852	
Warren	117	137	23	114	1,023,671	
Washington	160	208	56	153	1,269,261	
Wayne	334	427	94	334	1,988,994	
Westchester	4,027	6,775	2,590	4,186	48,433,324	
Wyoming	94	126	29	97	553,025	
Yates	75	103	25	78	573,345	

\* Includes Federally Non-Participating Family Assistance cases (non-disabled two-parent Family Assistance cases).



Table A-8  
**TEMPORARY ASSISTANCE BY FUNDING SOURCE**  
 Monthly Average Cases and Recipients, and Annual Expenditures  
 2014 SUMMARY

Local District	Total			Federally Participating-TANF Family Assistance-FP and Safety Net Assistance-FP			Federally Non-Participating Safety Net Assistance-FNP and Family Assistance-FNP		
	Cases	Recipients	Expenditures	Cases	Recipients	Expenditures	Cases	Recipients	Expenditures
New York State	296,157	565,859	\$2,217,173,489	110,518	254,694	\$844,772,125	185,639	311,165	\$1,372,401,364
New York City	181,200	335,707	1,324,850,287	59,779	136,132	429,493,995	121,421	199,575	895,356,292
Rest of State	114,957	230,152	892,323,202	50,740	118,562	415,278,130	64,217	111,590	477,045,072
Albany	2,882	6,274	22,989,700	1,428	3,350	11,343,397	1,455	2,924	11,646,303
Allegany	509	988	2,955,875	236	546	1,481,372	273	442	1,474,503
Broome	3,735	7,199	24,926,179	1,646	3,626	11,604,639	2,089	3,574	13,321,540
Cattaraugus	598	975	3,768,438	302	592	1,985,249	296	383	1,783,189
Cayuga	824	1,535	5,787,720	383	889	2,763,559	441	645	3,024,161
Chautauqua	2,681	5,783	17,201,457	1,274	3,048	8,577,953	1,408	2,735	8,623,504
Chemung	847	1,485	5,491,816	450	905	2,978,886	397	579	2,512,930
Chenango	436	765	2,674,295	224	472	1,476,431	212	293	1,197,864
Clinton	880	1,460	6,177,477	458	909	3,067,761	421	551	3,109,716
Columbia	571	1,084	4,056,435	265	636	1,836,156	305	448	2,220,279
Cortland	674	1,161	4,509,171	273	617	1,949,540	401	544	2,559,631
Delaware	315	541	1,912,251	168	360	1,082,881	147	181	829,370
Dutchess	1,389	2,525	12,897,797	704	1,501	7,164,633	685	1,024	5,733,164
Erie	14,827	32,404	93,088,242	6,497	15,660	43,594,788	8,329	16,744	49,493,454
Essex	140	226	998,714	81	157	518,810	59	69	479,904
Franklin	529	997	3,304,830	223	513	1,403,336	306	484	1,901,494
Fulton	362	587	2,337,159	180	380	1,192,785	182	207	1,144,374
Genesee	334	622	2,199,353	170	391	1,140,494	164	231	1,058,859
Greene	512	963	3,668,070	199	463	1,496,643	313	501	2,171,427
Hamilton	17	27	79,886	8	15	41,074	9	12	38,812
Herkimer	528	953	3,296,684	286	611	1,803,787	243	342	1,492,897
Jefferson	1,096	1,812	7,345,751	438	948	2,787,233	658	865	4,558,518
Lewis	123	204	751,231	72	145	460,069	51	59	291,162
Livingston	865	1,645	5,579,615	391	958	2,797,270	474	686	2,782,345
Madison	400	723	2,692,980	210	465	1,411,845	190	257	1,281,135
Monroe	16,353	33,448	110,864,883	6,848	16,499	51,435,793	9,505	16,949	59,429,090
Montgomery	571	1,367	3,938,745	373	952	2,572,844	197	415	1,365,901
Nassau	7,468	13,659	61,400,645	2,888	6,451	25,839,680	4,579	7,208	35,560,965
Niagara	3,337	6,417	19,468,279	1,444	3,306	9,170,595	1,893	3,111	10,297,684
Oneida	4,538	10,673	30,266,777	2,035	5,365	14,640,618	2,503	5,308	15,626,159
Onondaga	7,420	16,130	47,568,599	3,421	8,313	23,192,375	3,998	7,817	24,376,224
Ontario	897	1,547	6,241,175	419	900	2,868,384	479	646	3,372,791
Orange	3,035	6,407	30,245,378	1,329	3,164	13,582,014	1,705	3,243	16,663,364
Orleans	740	1,351	4,669,461	317	687	2,132,639	423	664	2,536,822
Oswego	1,743	3,672	11,291,813	859	2,141	5,966,113	884	1,531	5,325,700
Otsego	223	323	2,202,099	99	182	895,429	123	142	1,306,670
Putnam	144	206	1,411,443	62	116	486,620	81	90	924,823
Rensselaer	1,790	4,407	14,051,806	1,054	2,533	8,096,254	736	1,874	5,955,552
Rockland	1,585	3,096	11,596,749	706	1,616	5,694,206	880	1,480	5,902,543
St. Lawrence	1,335	2,638	8,213,185	578	1,318	3,751,525	757	1,320	4,461,660
Saratoga	421	625	3,104,333	225	408	1,449,249	196	217	1,655,084
Schenectady	2,004	4,395	15,565,117	1,028	2,442	8,023,607	975	1,953	7,541,510
Schoharie	223	388	1,649,407	104	230	721,136	119	158	928,271
Schuyler	235	446	1,626,821	95	227	671,778	141	219	955,043
Seneca	277	527	1,882,661	122	288	820,322	155	239	1,062,339
Steuben	1,020	1,948	6,366,315	440	1,045	2,948,944	580	903	3,417,371
Suffolk	10,687	19,474	129,220,558	3,974	9,434	56,392,148	6,713	10,040	72,828,410
Sullivan	773	1,595	5,809,284	400	904	2,890,965	373	691	2,918,319
Tioga	393	660	2,785,867	254	487	1,793,346	139	174	992,521
Tompkins	901	1,561	5,928,903	343	736	2,400,948	558	825	3,527,955
Ulster	2,228	4,127	18,497,359	975	2,191	8,549,275	1,253	1,935	9,948,084
Warren	243	396	1,954,017	130	270	967,371	113	126	986,646
Washington	342	594	2,554,854	189	409	1,347,074	153	186	1,207,780
Wayne	655	1,105	4,162,285	337	717	2,279,943	318	388	1,882,342
Westchester	6,954	13,440	84,766,237	2,944	6,708	36,535,638	4,010	6,732	48,230,599
Wyoming	193	334	1,207,235	99	209	654,210	94	126	553,025
Yates	159	260	1,119,786	84	158	546,496	75	103	573,290

Table A-9  
SAFETY NET ASSISTANCE-FNP BY CASE CATEGORY  
Monthly Average Cases and Recipients, and Annual Expenditures  
2014 SUMMARY

Local District	Total			Maintenance of Effort (MOE)			Non-Maintenance of Effort (Non-MOE)*		
	Cases	Recipients	Expenditures	Cases	Recipients	Expenditures	Cases	Recipients	Expenditures
New York State	185,639	311,165	\$1,372,401,364	36,040	116,611	\$305,693,315	149,599	194,554	\$1,066,708,049
New York City	121,421	199,575	895,356,292	24,735	76,990	192,802,137	96,686	122,585	702,554,155
Rest of State	64,217	111,590	477,045,072	11,305	39,621	112,891,178	52,912	71,969	364,153,894
Albany	1,455	2,924	11,646,303	329	1,179	2,970,547	1,126	1,745	8,675,756
Allegany	273	442	1,474,503	38	121	243,370	236	321	1,231,133
Broome	2,089	3,574	13,321,540	369	1,278	2,949,936	1,720	2,296	10,371,604
Cattaraugus	296	383	1,783,189	20	72	162,175	276	311	1,621,014
Cayuga	441	645	3,024,161	46	161	377,304	395	484	2,646,857
Chautauqua	1,408	2,735	8,623,504	341	1,137	2,764,123	1,066	1,598	5,859,381
Chemung	397	579	2,512,930	39	156	318,637	358	423	2,194,293
Chenango	212	293	1,197,864	13	44	90,320	199	249	1,107,544
Clinton	421	551	3,109,716	35	115	302,584	386	436	2,807,132
Columbia	305	448	2,220,279	29	99	222,035	276	349	1,998,244
Cortland	401	544	2,559,631	33	116	263,954	368	429	2,295,677
Delaware	147	181	829,370	4	13	23,795	143	169	805,575
Dutchess	685	1,024	5,733,164	100	349	1,038,620	585	675	4,694,544
Erie	8,329	16,744	49,493,454	1,689	6,142	13,271,705	6,640	10,601	36,221,749
Essex	59	69	479,904	2	7	13,953	57	62	465,951
Franklin	306	484	1,901,494	37	115	272,722	269	369	1,628,772
Fulton	182	207	1,144,374	4	11	21,669	178	196	1,122,705
Genesee	164	231	1,058,859	18	64	126,718	147	168	932,141
Greene	313	501	2,171,427	40	132	307,731	273	369	1,863,696
Hamilton	9	12	38,812	0	0	0	9	12	38,812
Herkimer	243	342	1,492,897	21	71	156,239	222	271	1,336,658
Jefferson	658	865	4,558,518	32	106	246,490	627	759	4,312,028
Lewis	51	59	291,162	1	3	4,771	50	56	286,391
Livingston	474	686	2,782,345	41	130	327,184	433	556	2,455,161
Madison	190	257	1,281,135	23	70	179,843	167	188	1,101,292
Monroe	9,505	16,949	59,429,090	2,233	7,788	18,978,074	7,272	9,161	40,451,016
Montgomery	197	415	1,365,901	41	146	310,293	156	269	1,055,608
Nassau	4,579	7,208	35,560,965	832	2,674	9,581,365	3,748	4,534	25,979,600
Niagara	1,893	3,111	10,297,684	308	1,069	2,234,864	1,585	2,041	8,062,820
Oneida	2,503	5,308	15,626,159	442	1,701	3,742,716	2,062	3,607	11,883,443
Onondaga	3,998	7,817	24,376,224	673	2,580	5,406,963	3,326	5,237	18,969,261
Ontario	479	646	3,372,791	37	117	283,345	442	530	3,089,446
Orange	1,705	3,243	16,663,364	388	1,381	4,632,915	1,318	1,862	12,030,449
Orleans	423	664	2,536,822	58	194	484,959	365	471	2,051,863
Oswego	884	1,531	5,325,700	101	377	825,055	783	1,154	4,500,645
Otsego	123	142	1,306,670	1	2	3,291	122	139	1,303,379
Putnam	81	90	924,823	2	7	23,510	79	83	901,313
Rensselaer	736	1,874	5,955,552	243	854	1,865,344	493	1,020	4,090,208
Rockland	880	1,480	5,902,543	70	244	533,370	810	1,237	5,369,173
St. Lawrence	757	1,320	4,461,660	83	281	579,304	674	1,038	3,882,356
Saratoga	196	217	1,655,084	1	2	6,508	195	214	1,648,576
Schenectady	975	1,953	7,541,510	229	867	2,168,633	746	1,085	5,372,877
Schoharie	119	158	928,271	2	8	7,487	117	150	920,784
Schuyler	141	219	955,043	11	40	89,396	130	179	865,647
Seneca	155	239	1,062,339	16	59	129,375	140	180	932,964
Steuben	580	903	3,417,371	73	252	526,338	507	651	2,891,033
Suffolk	6,713	10,040	72,828,410	808	2,930	15,981,712	5,906	7,111	56,846,698
Sullivan	373	691	2,918,319	75	252	616,359	297	439	2,301,960
Tioga	139	174	992,521	7	25	56,569	132	149	935,952
Tompkins	558	825	3,527,955	61	217	418,933	497	608	3,109,022
Ulster	1,253	1,935	9,948,084	157	506	1,491,456	1,097	1,429	8,456,628
Warren	113	126	986,646	2	6	13,623	111	120	973,023
Washington	153	186	1,207,780	4	14	35,373	149	171	1,172,407
Wayne	318	388	1,882,342	17	50	142,321	301	339	1,740,021
Westchester	4,010	6,732	48,230,599	1,022	3,253	14,969,947	2,988	3,479	33,260,652
Wyoming	94	126	553,025	6	25	57,623	88	101	495,402
Yates	75	103	573,290	2	11	37,732	72	92	535,558

\* The Non-MOE category includes otherwise Temporary Assistance for Needy Families eligible or otherwise Safety Net Assistance MOE eligible non-disabled two-parent cases.

Table A-10  
**SUPPLEMENTAL NUTRITION ASSISTANCE PROGRAM**  
 Monthly Average Households and Persons, and Annual Expenditures  
 2014 SUMMARY

Local District	Total			Temporary Assistance			Non-Temporary Assistance		
	Households	Persons	SNAP Benefits	Households	Persons	SNAP Benefits	Households	Persons	SNAP Benefits
New York State	1,684,597	3,092,073	\$5,135,576,347	657,084	980,624	\$1,793,170,091	1,027,513	2,111,449	\$3,342,406,256
New York City	978,645	1,758,605	3,066,495,622	438,498	663,646	1,217,763,945	540,147	1,094,958	1,848,731,677
Rest of State	705,952	1,333,469	2,069,080,725	218,586	316,978	575,406,146	487,366	1,016,491	1,493,674,579
Albany	19,767	36,990	57,323,897	6,120	8,908	16,212,579	13,647	28,082	41,111,318
Allegany	3,500	6,792	9,413,716	1,170	1,558	2,837,773	2,330	5,234	6,575,943
Broome	16,993	31,453	48,344,995	5,952	8,592	16,256,839	11,041	22,861	32,088,156
Cattaraugus	6,453	12,700	17,998,671	1,632	1,951	3,666,451	4,821	10,750	14,332,220
Cayuga	5,601	10,950	16,175,238	1,437	2,008	3,715,583	4,164	8,942	12,459,655
Chautauqua	14,087	27,533	42,082,009	4,216	6,833	12,207,129	9,872	20,700	29,874,880
Chemung	8,151	15,999	24,640,340	2,128	2,587	4,908,456	6,023	13,412	19,731,884
Chenango	4,065	7,930	11,480,573	994	1,242	2,243,981	3,071	6,687	9,236,592
Clinton	6,946	12,079	17,906,558	2,175	2,563	4,807,864	4,772	9,517	13,098,694
Columbia	3,781	6,598	10,293,144	1,251	1,657	3,125,737	2,530	4,941	7,167,407
Cortland	3,851	7,181	10,464,949	1,098	1,472	2,744,250	2,753	5,709	7,720,699
Delaware	3,366	6,685	9,700,342	849	1,001	1,800,537	2,517	5,684	7,899,805
Dutchess	13,600	24,577	39,205,481	3,585	4,431	8,358,533	10,016	20,146	30,846,948
Erie	84,950	159,050	246,381,477	26,942	41,990	76,100,314	58,008	117,059	170,281,163
Essex	2,123	3,813	5,610,861	685	759	1,420,946	1,438	3,054	4,189,915
Franklin	4,083	7,562	11,636,808	1,401	1,817	3,365,064	2,683	5,745	8,271,744
Fulton	5,125	9,648	14,316,790	1,304	1,454	2,849,411	3,820	8,193	11,467,379
Genesee	3,315	6,179	8,984,177	887	1,107	2,086,312	2,428	5,071	6,897,865
Greene	3,384	6,051	9,444,262	1,104	1,511	2,813,093	2,280	4,540	6,631,169
Hamilton	260	464	697,211	42	52	98,961	218	412	598,250
Herkimer	5,511	10,573	15,418,973	1,226	1,552	2,986,087	4,285	9,021	12,432,886
Jefferson	8,255	15,755	23,316,226	2,274	2,859	5,329,445	5,981	12,897	17,986,781
Lewis	1,854	3,664	4,909,463	411	494	859,292	1,444	3,170	4,050,171
Livingston	4,012	7,519	11,319,670	1,234	1,842	3,432,204	2,778	5,677	7,887,466
Madison	4,669	9,308	13,940,773	1,006	1,259	2,376,844	3,663	8,049	11,563,929
Monroe	65,659	121,674	193,453,906	25,803	40,564	73,379,514	39,856	81,110	120,074,392
Montgomery	4,816	9,958	14,968,345	1,397	2,083	3,821,127	3,419	7,875	11,147,218
Nassau	41,410	67,831	109,188,931	16,130	22,329	40,676,459	25,280	45,502	68,512,472
Niagara	17,935	32,575	50,179,013	5,690	8,295	15,311,528	12,245	24,281	34,867,485
Oneida	20,601	41,775	62,784,571	7,360	12,543	21,991,225	13,241	29,232	40,793,346
Onondaga	38,416	74,297	113,820,525	11,881	19,075	34,018,080	26,535	55,222	79,802,445
Ontario	5,740	10,438	15,572,714	1,595	2,107	4,000,578	4,146	8,332	11,572,136
Orange	20,518	48,038	75,095,158	5,687	8,605	15,090,194	14,831	39,433	60,004,964
Orleans	3,297	6,399	9,242,339	1,009	1,510	2,791,801	2,288	4,889	6,450,538
Oswego	9,773	20,694	30,573,454	2,695	4,294	7,772,561	7,078	16,400	22,800,893
Otsego	3,313	6,244	8,833,382	815	896	1,691,756	2,498	5,347	7,141,626
Putnam	1,764	2,795	4,464,171	545	599	1,109,178	1,219	2,195	3,354,993
Rensselaer	9,422	18,913	28,386,946	3,197	5,323	9,236,478	6,225	13,589	19,150,468
Rockland	17,298	47,534	73,700,442	3,896	5,326	9,741,483	13,402	42,208	63,958,959
St. Lawrence	8,630	17,023	24,741,162	2,812	3,889	7,041,395	5,818	13,134	17,699,767
Saratoga	9,143	16,365	24,083,712	1,886	2,046	3,959,059	7,257	14,319	20,124,653
Schenectady	13,474	25,592	40,866,447	4,344	6,482	11,814,159	9,130	19,111	29,052,288
Schoharie	2,052	3,880	5,695,543	527	652	1,223,164	1,525	3,228	4,472,379
Schuyler	1,309	2,601	3,581,945	348	523	951,647	961	2,078	2,630,298
Seneca	1,923	3,680	5,501,363	550	762	1,370,768	1,373	2,919	4,130,595
Steuben	6,367	12,942	18,004,790	1,953	2,755	4,869,616	4,414	10,186	13,135,174
Suffolk	74,156	128,330	211,984,239	20,111	27,573	50,201,687	54,045	100,757	161,782,552
Sullivan	6,262	12,459	19,889,001	1,863	2,485	4,618,038	4,400	9,974	15,270,963
Tioga	3,178	6,482	8,928,548	723	906	1,653,204	2,455	5,576	7,275,344
Tompkins	5,294	9,341	14,349,965	1,567	2,086	3,905,514	3,727	7,255	10,444,451
Ulster	12,291	21,835	34,595,323	4,093	5,816	10,762,815	8,199	16,019	23,832,508
Warren	4,132	7,569	11,049,385	1,082	1,230	2,359,909	3,050	6,339	8,689,476
Washington	4,058	7,886	11,346,674	947	1,117	2,122,117	3,111	6,768	9,224,557
Wayne	5,768	10,901	15,907,519	1,566	1,912	3,622,995	4,202	8,989	12,284,524
Westchester	47,073	84,241	138,828,395	14,607	20,732	35,896,390	32,466	63,509	102,932,005
Wyoming	1,776	3,418	4,705,036	466	572	1,073,135	1,310	2,846	3,631,901
Yates	1,401	2,708	3,751,177	322	392	724,887	1,079	2,316	3,026,290

Note: Supplemental Nutrition Assistance Program households containing only Supplemental Security Income recipients or a mix of Temporary Assistance and Supplemental Security Income recipients are counted as Temporary Assistance.

Table A-11  
**SUPPLEMENTAL SECURITY INCOME**  
 Monthly Average Recipients, Total Annual Program Expenditures and Federal and State Shares by Local District  
 2014 SUMMARY

Local District	Recipients	Expenditures		
		Total	Federal	State
New York State	701,600	\$4,937,873,246	\$4,295,950,368	\$641,922,878
New York City	425,123	3,033,542,880	2,665,354,871	368,188,009
Rest of State	271,300	1,877,479,370	1,611,906,386	265,572,984
Albany	7,425	50,836,948	44,230,481	6,606,467
Allegany	1,587	10,695,574	9,257,592	1,437,982
Broome	7,186	50,435,559	44,688,411	5,747,148
Cattaraugus	2,650	17,687,457	15,303,617	2,383,840
Cayuga	1,931	13,266,713	11,182,358	2,084,355
Chautauqua	5,102	35,260,385	30,651,235	4,609,150
Chemung	3,586	23,695,153	20,567,482	3,127,671
Chenango	1,631	10,782,204	9,507,509	1,274,695
Clinton	3,104	20,801,867	17,934,461	2,867,406
Columbia	1,700	11,924,391	9,651,595	2,272,796
Cortland	1,313	8,800,215	7,582,990	1,217,225
Delaware	1,297	8,493,420	7,200,856	1,292,564
Dutchess	5,866	41,267,728	33,285,521	7,982,207
Erie	30,170	213,873,092	186,486,017	27,387,075
Essex	1,111	7,436,083	5,848,905	1,587,178
Franklin	1,817	12,645,138	10,676,085	1,969,053
Fulton	2,165	14,859,275	12,385,986	2,473,289
Genesee	1,279	8,761,808	7,257,538	1,504,270
Greene	1,493	10,103,245	8,767,054	1,336,191
Hamilton	61	366,742	319,375	47,367
Herkimer	1,775	11,499,241	9,900,088	1,599,153
Jefferson	2,964	19,645,234	16,710,982	2,934,252
Lewis	669	4,260,751	3,730,698	530,053
Livingston	1,275	8,958,648	7,987,631	971,017
Madison	1,465	9,709,016	8,414,585	1,294,431
Monroe	26,998	199,743,261	175,694,731	24,048,530
Montgomery	2,014	14,098,651	12,172,066	1,926,585
Nassau	18,523	122,145,872	103,489,944	18,655,928
Niagara	6,308	44,351,987	38,307,896	6,044,091
Oneida	8,710	61,050,228	53,622,295	7,427,933
Onondaga	15,058	109,347,000	97,077,331	12,269,669
Ontario	1,983	13,146,718	11,396,785	1,749,933
Orange	7,346	51,170,233	43,849,490	7,320,743
Orleans	1,031	6,959,743	6,092,000	867,743
Oswego	3,502	24,508,244	22,077,012	2,431,232
Otsego	1,481	9,996,313	8,234,270	1,762,043
Putnam	913	5,793,994	4,670,983	1,123,011
Rensselaer	4,665	33,282,077	28,342,404	4,939,673
Rockland	5,452	37,849,626	28,744,734	9,104,892
St. Lawrence	4,000	26,714,434	23,423,169	3,291,265
Saratoga	3,135	20,636,336	17,765,325	2,871,011
Schenectady	5,728	41,068,860	36,046,465	5,022,395
Schoharie	762	5,158,744	4,196,656	962,088
Schuyler	476	3,153,758	2,529,093	624,665
Seneca	818	5,526,927	4,723,921	803,006
Steuben	3,221	21,412,280	18,838,960	2,573,320
Suffolk	22,869	155,474,364	128,833,462	26,640,902
Sullivan	2,788	18,551,678	14,931,631	3,620,047
Tioga	1,247	8,472,154	7,483,070	989,084
Tompkins	1,707	11,739,154	9,940,047	1,799,107
Ulster	4,447	30,209,233	25,402,503	4,806,730
Warren	1,730	11,103,809	9,430,422	1,673,387
Washington	1,684	10,983,237	9,454,581	1,528,656
Wayne	2,270	15,675,050	13,810,806	1,864,244
Westchester	18,561	123,740,904	104,621,031	19,119,873
Wyoming	707	4,613,992	4,014,928	599,064
Yates	548	3,734,622	3,159,323	575,299
Mental Hygiene	5,178	26,850,996	18,689,111	8,161,885

Note: Only New York State includes Mental Hygiene.

Table A-12  
CHILD SUPPORT COLLECTIONS (IV-D)  
2014 SUMMARY

Local District	Total	Curent Assistance	Former Assistance	Never Assistance
New York State	\$1,807,932,269.56	\$70,500,049.01	\$871,256,864.06	\$866,175,356.53
New York City	742,026,900.83	31,888,623.65	376,948,017.43	333,190,259.75
Rest of State	1,065,905,368.77	38,611,425.36	494,308,846.63	532,985,096.78
Albany	28,820,905.23	906,677.82	11,607,355.23	16,306,872.18
Allegany	6,037,253.91	334,539.17	3,807,221.75	1,895,492.99
Broome	17,176,301.17	1,094,690.72	9,049,234.70	7,032,375.75
Cattaraugus	10,635,009.28	389,027.65	6,111,850.35	4,134,131.28
Cayuga	8,805,336.29	381,062.64	5,106,965.28	3,317,308.37
Chautauqua	13,765,613.58	987,323.63	8,319,395.16	4,458,894.79
Chemung	9,184,167.46	365,733.04	5,730,759.17	3,087,675.25
Chenango	5,082,086.10	193,109.36	2,845,903.63	2,043,073.11
Clinton	9,805,828.30	534,046.19	4,732,662.70	4,539,119.41
Columbia	6,046,548.43	304,142.31	2,921,329.49	2,821,076.63
Cortland	4,875,657.13	257,852.23	2,816,200.05	1,801,604.85
Delaware	4,418,662.48	227,748.88	2,722,837.77	1,468,075.83
Dutchess	30,415,090.22	622,454.54	10,542,587.09	19,250,048.59
Erie	77,708,494.33	3,958,726.58	42,568,352.57	31,181,415.18
Essex	3,544,897.82	122,189.97	1,849,718.37	1,572,989.48
Franklin	5,508,424.99	188,939.24	2,709,997.47	2,609,488.28
Fulton	6,742,569.26	203,131.26	4,363,562.06	2,175,875.94
Genesee	6,127,434.58	147,637.43	3,136,912.79	2,842,884.36
Greene	4,946,129.45	205,341.96	2,317,783.79	2,423,003.70
Hamilton	310,261.28	4,819.24	194,578.34	110,863.70
Herkimer	5,923,835.16	282,796.51	3,195,594.48	2,445,444.17
Jefferson	15,680,592.22	526,215.92	6,179,502.92	8,974,873.38
Lewis	4,101,097.41	97,465.94	2,678,231.10	1,325,400.37
Livingston	7,026,666.12	478,838.46	3,788,509.05	2,759,318.61
Madison	6,138,577.77	182,937.22	3,320,021.04	2,635,619.51
Monroe	68,519,218.01	3,410,740.75	35,243,924.59	29,864,552.67
Montgomery	6,063,868.00	448,194.55	3,772,200.25	1,843,473.20
Nassau	99,935,852.72	1,879,497.96	34,858,308.34	63,198,046.42
Niagara	19,184,941.92	1,092,470.33	11,641,415.17	6,451,056.42
Oneida	18,081,581.97	1,259,911.00	10,243,280.73	6,578,390.24
Onondaga	45,853,246.12	1,560,826.41	25,904,485.35	18,387,934.36
Ontario	11,855,257.66	404,789.34	5,913,033.79	5,537,434.53
Orange	40,218,874.22	1,497,085.68	14,826,363.70	23,895,424.84
Orleans	4,558,375.17	263,553.27	2,683,078.22	1,611,743.68
Oswego	14,219,650.70	752,191.49	8,318,792.96	5,148,666.25
Otsego	4,771,845.15	109,070.89	2,280,129.33	2,382,644.93
Putnam	7,781,377.72	68,948.18	2,308,619.97	5,403,809.57
Rensselaer	19,828,343.38	1,033,885.67	8,238,755.84	10,555,701.87
Rockland	27,709,305.41	687,831.07	10,278,290.47	16,743,183.87
St. Lawrence	12,372,485.17	516,800.27	7,762,901.58	4,092,783.32
Saratoga	20,496,008.08	242,690.55	8,374,758.56	11,878,558.97
Schenectady	16,549,145.26	544,773.02	6,819,848.77	9,184,523.47
Schoharie	3,749,346.54	139,462.57	2,035,281.50	1,574,602.47
Schuyler	2,095,517.49	90,554.66	1,433,920.31	571,042.52
Seneca	3,636,620.89	152,612.67	1,866,840.02	1,617,168.20
Steuben	11,006,832.56	436,982.65	6,686,593.75	3,883,256.16
Suffolk	157,610,939.42	3,840,310.90	67,658,425.45	86,112,203.07
Sullivan	8,538,823.76	352,198.00	4,221,676.30	3,964,949.46
Tioga	5,577,187.08	334,366.74	3,079,112.02	2,163,708.32
Tompkins	7,533,121.25	378,542.19	3,571,242.16	3,583,336.90
Ulster	18,304,096.10	951,775.17	8,713,276.01	8,639,044.92
Warren	9,424,312.83	246,849.32	4,310,643.73	4,866,819.78
Washington	8,129,707.56	264,213.40	4,173,317.15	3,692,177.01
Wayne	10,526,736.45	285,200.04	5,127,693.08	5,113,843.33
Westchester	75,849,797.81	2,130,369.59	25,911,019.69	47,808,408.53
Wyoming	5,015,294.67	162,779.45	2,210,097.93	2,642,417.29
Yates	2,080,217.73	74,499.67	1,224,453.56	781,264.50