



**Office of Temporary  
and Disability Assistance**



# **Temporary and Disability Assistance Statistics**

**November 2015**



# Temporary and Disability Assistance Statistics

November 2015



## Temporary Assistance

	This Month	Change From Last Month	Change From Last Year
	<b>571,591</b>	<b>-6,439 (-1.1%)</b>	<b>4,903 (0.9%)</b>
	<b>\$180,381,968</b>	<b>-\$9.0 mil (-4.7%)</b>	<b>\$3.4 mil (1.9%)</b>

## Supplemental Nutrition Assistance Program

	This Month	Change From Last Month	Change From Last Year
	<b>2,982,398</b>	<b>-14,251 (-0.5%)</b>	<b>-75,246 (-2.5%)</b>
	<b>\$418,495,674</b>	<b>-\$376,516 (-0.1%)</b>	<b>-\$11.8 mil (-2.7%)</b>

## Supplemental Security Income

	This Month	Change From Last Month	Change From Last Year
	<b>710,076</b>	<b>2,661 (0.4%)</b>	<b>6,920 (1.0%)</b>
	<b>\$423,778,757</b>	<b>\$4.1 mil (1.0%)</b>	<b>\$12.6 mil (3.1%)</b>

Date Revised: February 16, 2017

# Table of Contents

## Ten Year Trend Graphs

Temporary Assistance Recipients	5
Supplemental Nutrition Assistance Program Recipients	5
Supplemental Security Income Recipients	5

## Temporary Assistance, SSI and SNAP Summary

<b>Table 1:</b>	Temporary Assistance, Family Assistance-FP, Safety Net Assistance, Supplemental Security Income and Supplemental Nutrition Assistance Program Cases by Region	6
<b>Table 2:</b>	Temporary Assistance, Family Assistance-FP, Safety Net Assistance, Supplemental Security Income and Supplemental Nutrition Assistance Program Recipients by Region	6
<b>Table 3:</b>	Temporary Assistance, Family Assistance-FP, Safety Net Assistance, Supplemental Security Income and Supplemental Nutrition Assistance Program Expenditures by Region	6

## Temporary Assistance by Program Area

<b>Table 4:</b>	Temporary Assistance Year to Year Monthly Comparison Cases, Recipients and Expenditures	7
<b>Table 5:</b>	Temporary Assistance Cases, Recipients, Children, Adults and Expenditures	8
<b>Table 6:</b>	Family Assistance-FP Cases, Recipients, Children, Adults and Expenditures	9
<b>Table 7:</b>	Safety Net Assistance Cases, Recipients, Children, Adults and Expenditures	10

## Temporary Assistance by Funding Source and Program Area

<b>Table 8:</b>	Temporary Assistance by Funding Source (Federally Participating and Federally Non-Participating) Cases, Recipients and Expenditures	11
<b>Table 9:</b>	Temporary Assistance for Needy Families-FP by Program (Family Assistance-FP and Safety Net Assistance-FP) Cases, Recipients, Children, Adults and Expenditures	12
<b>Table 10:</b>	Safety Net Assistance-FNP and Family Assistance-FNP Cases, Recipients, Children, Adults and Expenditures	13
<b>Table 11:</b>	Safety Net Assistance-FNP by Maintenance of Effort Status Cases, Recipients, Children, Adults and Expenditures	14
<b>Table 12:</b>	Safety Net Assistance-FNP-Cash Total Cases, Recipients, Children, Adults and Expenditures	15
<b>Table 13:</b>	Safety Net Assistance-FNP-Cash by Maintenance of Effort Status Cases, Recipients, Children, Adults and Expenditures	16
<b>Table 14:</b>	Safety Net Assistance-FNP-Non-Cash Total Cases, Recipients, Children, Adults and Expenditures	17
<b>Table 15:</b>	Safety Net Assistance-FNP-Non-Cash by Maintenance of Effort Status Cases, Recipients, Children, Adults and Expenditures	18

## Supplemental Nutrition Assistance Program

<b>Table 16:</b>	Supplemental Nutrition Assistance Program Households, Persons and Value of Supplemental Nutrition Assistance Program Benefits	19
------------------	---	----

## Supplemental Security Income

<b>Table 17:</b>	Supplemental Security Income Recipients, Total Program Expenditures and Federal and State Shares	20
<b>Table 18:</b>	Supplemental Security Income Recipients by Living Arrangement and Location	21
<b>Table 19:</b>	Supplemental Security Income Recipients by Living Arrangement and Category of Assistance	21

# Table of Contents

## Child Support

<b>Table 20:</b>	Child Support Collections (IV-D)	22
------------------	----------------------------------	----

## Aggregate Claims

<b>Table 21:</b>	Aggregate Claims - Total Temporary Assistance	23
<b>Table 22:</b>	Aggregate Claims - Federally Participating - TANF	24
<b>Table 23:</b>	Aggregate Claims - Federally Non-Participating Safety Net Assistance-FNP Maintenance of Effort	25
<b>Table 24:</b>	Aggregate Claims - Federally Non-Participating Safety Net Assistance-FNP and Family Assistance-FNP Non-Maintenance of Effort	26

## Home Energy Assistance Program

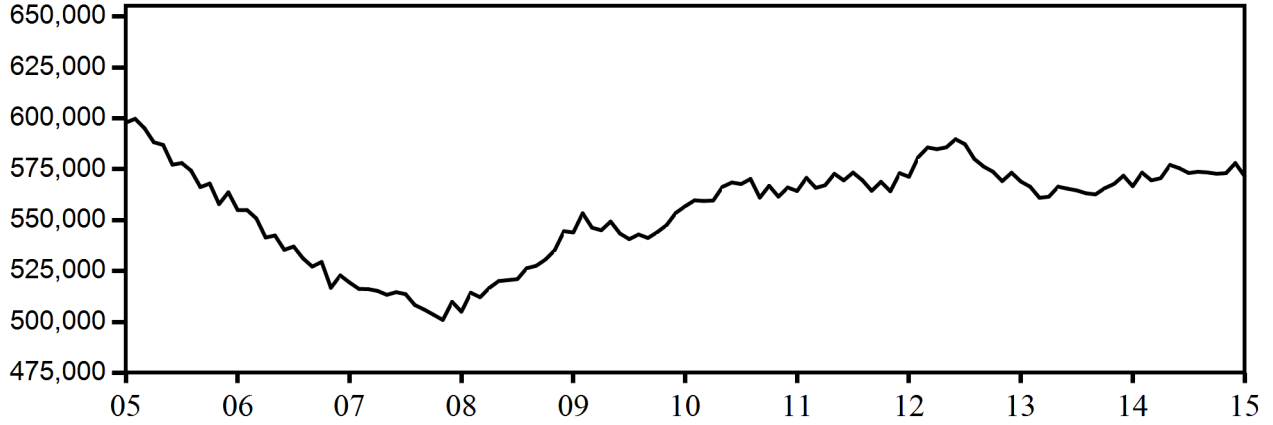
<b>Table 25:</b>	Home Energy Assistance Program Number and Dollar Amount of Benefits Authorized and Administrative Allocations	27
<b>Table 26:</b>	Home Energy Assistance Program - Non-Emergency Number, Total Dollar Amount and Average Dollar Amount of Benefits Authorized	28
<b>Table 27:</b>	Home Energy Assistance Program - Emergency Number, Total Dollar Amount and Average Dollar Amount of Benefits Authorized	29

## Welfare to Work Statistical Tables

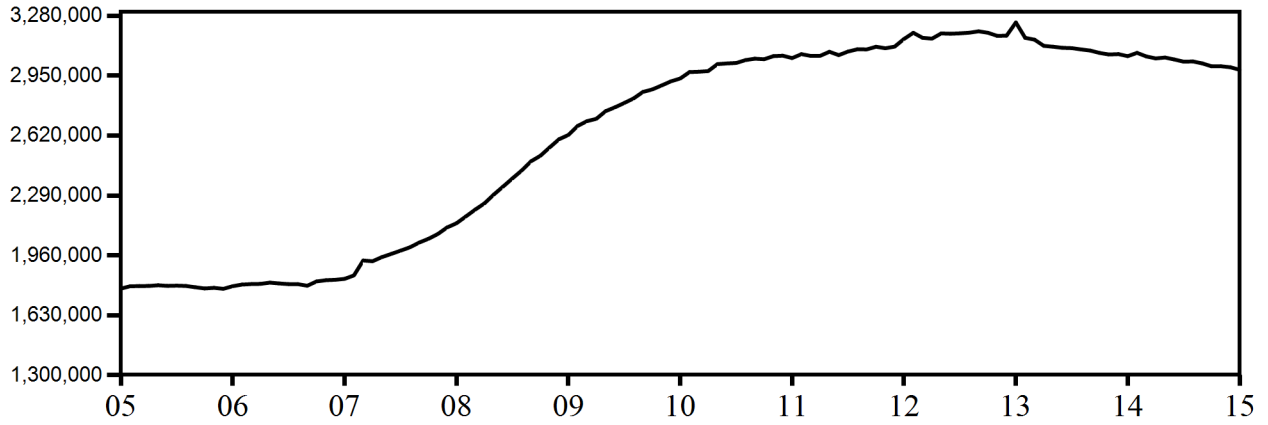
<b>Table 28:</b>	Federal All Families Work Participation Rates TANF, Safety Net Assistance MOE and Combined TANF and Safety Net Assistance MOE	30
<b>Table 29:</b>	Work Sanction Status by Presence in Federal All Families Work Participation Calculation TANF, Safety Net Assistance MOE and Combined TANF and Safety Net Assistance MOE	31
<b>Table 30:</b>	Temporary Assistance Cases with Earned Income Cases, Average Gross Earned Income and Average Net Earned Income after Application of Disregards	32

**NEW YORK STATE  
December 2005 - November 2015  
TEN YEAR TREND**

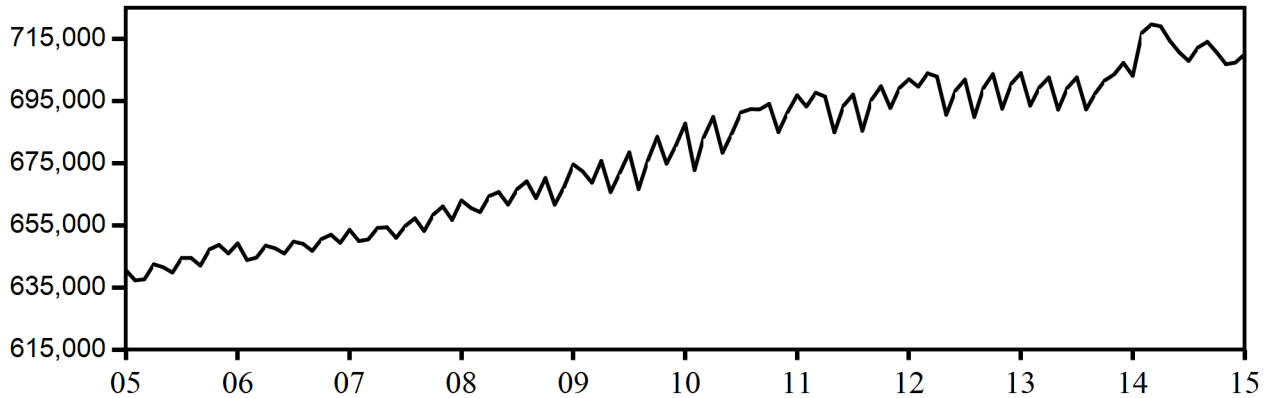
**Temporary Assistance Recipients**



**Supplemental Nutrition Assistance Program Recipients**



**Supplemental Security Income Recipients  
(Including Mental Hygiene)**



SELECTED SUMMARY PROGRAM DATA  
BY REGION

Table 1  
TEMPORARY AND DISABILITY ASSISTANCE CASES  
November 2015

Region	Cases				
	Temporary Assistance by Program			Supplemental Security Income	Supplemental Nutrition Assistance Program
	Total	Family Assistance-FP	Safety Net Assistance		
New York State	298,135	104,981	193,154	705,563	1,640,839
New York City	190,936	59,364	131,572	427,738	945,838
Rest of State	107,199	45,617	61,582	277,825	695,001

Table 2  
TEMPORARY AND DISABILITY ASSISTANCE RECIPIENTS  
November 2015

Region	Recipients				
	Temporary Assistance by Program			Supplemental Security Income	Supplemental Nutrition Assistance Program
	Total	Family Assistance-FP	Safety Net Assistance		
New York State	571,591	243,050	328,541	705,563	2,982,398
New York City	358,322	137,712	220,610	427,738	1,686,941
Rest of State	213,269	105,338	107,931	277,825	1,295,457

Table 3  
TEMPORARY AND DISABILITY ASSISTANCE EXPENDITURES  
November 2015

Region	Expenditures				
	Temporary Assistance by Program			Supplemental Security Income	Supplemental Nutrition Assistance Program
	Total	Family Assistance-FP	Safety Net Assistance		
New York State	\$180,381,968	\$64,913,516	\$115,468,452	\$421,675,759	\$418,495,674
New York City	112,423,340	34,347,595	78,075,745	257,463,028	250,570,264
Rest of State	67,958,628	30,565,921	37,392,707	164,212,731	167,925,410

Note: Supplemental Security Income data listed here do not include Mental Hygiene data. See Tables 17 - 19 for total Supplemental Security Income data.

Table 4  
**TEMPORARY ASSISTANCE**  
 Year to Year Monthly Comparison by Local District  
 Cases, Recipients and Expenditures  
 November 2015

Local District	November 2015			November 2014			November 2013		
	Cases	Recipients	Expenditures	Cases	Recipients	Expenditures	Cases	Recipients	Expenditures
New York State	298,135	571,591	\$180,381,968	295,083	566,688	\$176,987,332	295,928	568,983	\$179,695,775
New York City	190,936	358,322	112,423,340	183,279	341,498	109,663,189	182,829	340,896	109,673,073
Rest of State	107,199	213,269	67,958,628	111,804	225,190	67,324,143	113,099	228,087	70,022,702
Albany	2,997	6,250	2,112,165	2,768	6,137	1,817,803	3,076	6,754	1,844,375
Allegany	460	852	216,448	488	956	235,280	528	1,026	254,664
Broome	3,691	6,962	1,969,792	3,675	7,080	1,971,618	3,746	7,328	2,031,450
Cattaraugus	724	1,138	357,826	628	1,019	312,162	529	848	263,819
Cayuga	934	1,741	554,922	823	1,562	499,952	802	1,512	458,912
Chautauqua	2,613	5,491	1,269,102	2,604	5,517	1,322,290	2,681	5,888	1,424,229
Chemung	743	1,261	397,914	836	1,453	438,124	825	1,506	428,489
Chenango	426	756	194,573	457	799	216,139	387	672	212,513
Clinton	878	1,393	536,837	870	1,434	503,602	951	1,609	560,181
Columbia	495	927	319,481	524	1,019	295,751	556	1,058	371,083
Cortland	679	1,127	369,944	644	1,073	339,400	648	1,210	367,254
Delaware	243	400	121,934	287	503	150,743	302	489	155,254
Dutchess	1,224	2,159	872,295	1,356	2,493	907,850	1,395	2,577	1,214,396
Erie	14,838	32,166	7,261,009	14,747	32,577	7,081,504	14,270	31,092	7,170,785
Essex	108	161	42,442	143	232	85,328	141	247	106,994
Franklin	575	1,012	307,923	506	931	252,600	488	931	240,337
Fulton	309	507	169,983	318	500	162,407	353	639	185,676
Genesee	298	556	182,315	306	588	163,113	371	667	213,202
Greene	401	730	230,787	438	830	249,292	555	1,054	328,352
Hamilton	17	27	5,943	18	24	5,979	13	21	4,318
Herkimer	523	892	263,048	537	947	266,305	507	935	258,444
Jefferson	1,200	2,008	657,833	1,141	1,911	594,725	932	1,533	521,751
Lewis	104	162	58,093	112	186	54,608	124	200	67,013
Livingston	736	1,353	368,965	826	1,561	432,382	829	1,599	450,450
Madison	380	679	204,921	403	721	238,132	395	737	226,328
Monroe	14,173	29,246	7,975,071	15,622	32,320	8,516,071	16,482	33,606	9,204,776
Montgomery	524	1,161	352,349	590	1,381	314,532	544	1,268	280,634
Nassau	6,787	12,522	4,772,440	7,529	13,730	5,021,600	7,271	13,437	4,804,434
Niagara	3,057	5,825	1,425,951	3,226	6,319	1,414,060	3,224	6,265	1,507,462
Oneida	4,253	9,924	1,992,930	4,436	10,417	2,189,381	4,407	10,403	2,242,587
Onondaga	7,253	15,656	3,860,658	7,349	16,065	3,831,036	7,484	16,036	3,988,811
Ontario	843	1,424	511,831	888	1,496	480,106	829	1,427	479,404
Orange	2,765	5,733	2,249,007	2,892	6,184	1,961,915	3,303	6,981	2,576,166
Orleans	652	1,141	321,834	728	1,289	387,716	703	1,292	347,193
Oswego	1,662	3,410	859,955	1,708	3,610	907,859	1,655	3,517	838,526
Otsego	224	321	201,053	200	290	147,963	242	385	202,501
Putnam	121	166	116,634	139	202	111,146	132	184	120,681
Rensselaer	1,625	4,043	1,039,095	1,742	4,216	1,038,450	1,738	4,331	1,078,162
Rockland	1,239	2,487	882,495	1,530	2,991	954,972	1,670	3,315	999,867
St. Lawrence	1,227	2,387	589,106	1,343	2,642	663,201	1,230	2,449	610,923
Saratoga	378	536	229,811	395	628	242,943	401	589	233,290
Schenectady	2,008	4,378	1,193,352	1,913	4,259	1,074,905	1,937	4,283	1,051,398
Schoharie	183	320	107,522	207	356	109,846	210	373	119,718
Schuyler	216	417	121,636	199	383	103,143	229	425	142,632
Seneca	244	462	133,715	261	513	145,891	249	477	135,526
Steuben	941	1,708	446,019	968	1,815	478,697	998	1,911	526,081
Suffolk	9,595	17,520	10,658,626	10,237	18,954	10,161,415	9,864	18,602	8,747,568
Sullivan	698	1,333	377,233	638	1,314	369,975	871	1,781	500,039
Tioga	381	628	217,770	398	655	246,052	401	679	238,560
Tompkins	751	1,303	416,565	827	1,426	450,677	913	1,615	515,117
Ulster	1,921	3,571	1,365,876	2,174	3,992	1,419,815	2,122	4,038	1,324,502
Warren	227	351	149,357	221	361	132,319	229	381	170,171
Washington	318	560	199,127	351	619	229,425	353	584	245,739
Wayne	647	1,090	322,567	625	1,051	346,723	635	1,075	314,691
Westchester	6,309	12,315	5,622,679	6,678	13,091	5,086,146	7,018	13,666	6,935,781
Wyoming	205	337	96,379	181	321	99,030	200	338	102,389
Yates	176	284	103,490	154	247	90,044	151	242	77,104

Table 5  
**TEMPORARY ASSISTANCE**  
Cases, Recipients, Children, Adults and Expenditures by Local District  
November 2015

Local District	Temporary Assistance				
	Cases	Recipients	Children	Adults	Expenditures
New York State	298,135	571,591	295,709	275,882	\$180,381,968
New York City	190,936	358,322	174,337	183,985	112,423,340
Rest of State	107,199	213,269	121,372	91,897	67,958,628
Albany	2,997	6,250	3,629	2,621	2,112,165
Allegany	460	852	480	372	216,448
Broome	3,691	6,962	3,927	3,035	1,969,792
Cattaraugus	724	1,138	600	538	357,826
Cayuga	934	1,741	919	822	554,922
Chautauqua	2,613	5,491	3,121	2,370	1,269,102
Chemung	743	1,261	824	437	397,914
Chenango	426	756	466	290	194,573
Clinton	878	1,393	790	603	536,837
Columbia	495	927	505	422	319,481
Cortland	679	1,127	533	594	369,944
Delaware	243	400	252	148	121,934
Dutchess	1,224	2,159	1,382	777	872,295
Erie	14,838	32,166	18,604	13,562	7,261,009
Essex	108	161	93	68	42,442
Franklin	575	1,012	495	517	307,923
Fulton	309	507	296	211	169,983
Genesee	298	556	332	224	182,315
Greene	401	730	386	344	230,787
Hamilton	17	27	13	14	5,943
Herkimer	523	892	500	392	263,048
Jefferson	1,200	2,008	986	1,022	657,833
Lewis	104	162	105	57	58,093
Livingston	736	1,353	681	672	368,965
Madison	380	679	402	277	204,921
Monroe	14,173	29,246	16,733	12,513	7,975,071
Montgomery	524	1,161	753	408	352,349
Nassau	6,787	12,522	6,703	5,819	4,772,440
Niagara	3,057	5,825	3,154	2,671	1,425,951
Oneida	4,253	9,924	5,816	4,108	1,992,930
Onondaga	7,253	15,656	9,190	6,466	3,860,658
Ontario	843	1,424	772	652	511,831
Orange	2,765	5,733	3,347	2,386	2,249,007
Orleans	652	1,141	623	518	321,834
Oswego	1,662	3,410	1,922	1,488	859,955
Otsego	224	321	159	162	201,053
Putnam	121	166	88	78	116,634
Rensselaer	1,625	4,043	2,624	1,419	1,039,095
Rockland	1,239	2,487	1,553	934	882,495
St. Lawrence	1,227	2,387	1,295	1,092	589,106
Saratoga	378	536	345	191	229,811
Schenectady	2,008	4,378	2,745	1,633	1,193,352
Schoharie	183	320	195	125	107,522
Schuyler	216	417	224	193	121,636
Seneca	244	462	270	192	133,715
Steuben	941	1,708	943	765	446,019
Suffolk	9,595	17,520	9,034	8,486	10,658,626
Sullivan	698	1,333	869	464	377,233
Tioga	381	628	414	214	217,770
Tompkins	751	1,303	652	651	416,565
Ulster	1,921	3,571	1,861	1,710	1,365,876
Warren	227	351	198	153	149,357
Washington	318	560	376	184	199,127
Wayne	647	1,090	615	475	322,567
Westchester	6,309	12,315	7,214	5,101	5,622,679
Wyoming	205	337	189	148	96,379
Yates	176	284	175	109	103,490



Table 6  
**FAMILY ASSISTANCE-FP**  
Cases, Recipients, Children, Adults and Expenditures by Local District  
November 2015

Local District	Family Assistance-FP				
	Cases	Recipients	Children	Adults	Expenditures
New York State	104,981	243,050	179,673	63,377	\$64,913,516
New York City	59,364	137,712	100,691	37,021	34,347,595
Rest of State	45,617	105,338	78,982	26,356	30,565,921
Albany	1,309	3,037	2,236	801	877,884
Allegany	206	455	354	101	100,019
Broome	1,590	3,507	2,644	863	909,865
Cattaraugus	304	604	486	118	154,192
Cayuga	377	884	642	242	235,139
Chautauqua	1,090	2,569	1,888	681	553,993
Chemung	389	772	662	110	210,328
Chenango	233	484	388	96	117,027
Clinton	418	797	657	140	246,049
Columbia	221	502	366	136	149,566
Cortland	266	582	422	160	150,987
Delaware	148	299	245	54	75,077
Dutchess	612	1,257	1,055	202	451,183
Erie	6,358	15,458	11,259	4,199	3,466,794
Essex	59	105	89	16	23,710
Franklin	218	468	336	132	118,617
Fulton	162	339	270	69	87,685
Genesee	145	332	261	71	82,116
Greene	156	366	276	90	85,498
Hamilton	6	16	13	3	2,990
Herkimer	256	519	405	114	132,153
Jefferson	448	986	751	235	241,143
Lewis	60	101	83	18	31,347
Livingston	309	711	494	217	177,411
Madison	178	366	287	79	94,318
Monroe	5,706	13,594	9,942	3,652	3,625,483
Montgomery	313	784	610	174	209,929
Nassau	2,531	5,639	4,292	1,347	1,883,254
Niagara	1,215	2,715	2,009	706	633,048
Oneida	1,797	4,620	3,347	1,273	902,630
Onondaga	3,221	7,724	5,651	2,073	1,795,076
Ontario	394	820	623	197	220,948
Orange	1,152	2,731	2,070	661	1,018,416
Orleans	270	560	421	139	141,470
Oswego	765	1,846	1,345	501	423,852
Otsego	97	171	138	33	72,711
Putnam	51	88	76	12	51,447
Rensselaer	929	2,227	1,610	617	563,080
Rockland	554	1,242	1,048	194	422,619
St. Lawrence	530	1,248	929	319	263,986
Saratoga	208	354	317	37	106,520
Schenectady	1,021	2,389	1,815	574	650,715
Schoharie	98	223	178	45	56,647
Schuyler	95	238	171	67	54,453
Seneca	119	259	188	71	64,074
Steuben	382	873	670	203	192,208
Suffolk	3,502	8,190	6,120	2,070	4,416,328
Sullivan	376	808	669	139	214,413
Tioga	243	462	379	83	126,712
Tompkins	282	586	430	156	159,320
Ulster	760	1,700	1,232	468	586,937
Warren	115	217	178	39	63,880
Washington	188	385	323	62	113,925
Wayne	318	661	513	148	163,242
Westchester	2,667	6,082	4,800	1,282	2,492,728
Wyoming	109	211	167	44	54,431
Yates	91	175	152	23	46,348

Table 7  
SAFETY NET ASSISTANCE\*  
Cases, Recipients, Children, Adults and Expenditures by Local District  
November 2015

Local District	Safety Net Assistance				
	Cases	Recipients	Children	Adults	Expenditures
New York State	193,154	328,541	116,036	212,505	\$115,468,452
New York City	131,572	220,610	73,646	146,964	78,075,745
Rest of State	61,582	107,931	42,390	65,541	37,392,707
Albany	1,688	3,213	1,393	1,820	1,234,281
Allegany	254	397	126	271	116,429
Broome	2,101	3,455	1,283	2,172	1,059,927
Cattaraugus	420	534	114	420	203,634
Cayuga	557	857	277	580	319,783
Chautauqua	1,523	2,922	1,233	1,689	715,109
Chemung	354	489	162	327	187,586
Chenango	193	272	78	194	77,546
Clinton	460	596	133	463	290,788
Columbia	274	425	139	286	169,915
Cortland	413	545	111	434	218,957
Delaware	95	101	7	94	46,857
Dutchess	612	902	327	575	421,112
Erie	8,480	16,708	7,345	9,363	3,794,215
Essex	49	56	4	52	18,732
Franklin	357	544	159	385	189,306
Fulton	147	168	26	142	82,298
Genesee	153	224	71	153	100,199
Greene	245	364	110	254	145,289
Hamilton	11	11	0	11	2,953
Herkimer	267	373	95	278	130,895
Jefferson	752	1,022	235	787	416,690
Lewis	44	61	22	39	26,746
Livingston	427	642	187	455	191,554
Madison	202	313	115	198	110,603
Monroe	8,467	15,652	6,791	8,861	4,349,588
Montgomery	211	377	143	234	142,420
Nassau	4,256	6,883	2,411	4,472	2,889,186
Niagara	1,842	3,110	1,145	1,965	792,903
Oneida	2,456	5,304	2,469	2,835	1,090,300
Onondaga	4,032	7,932	3,539	4,393	2,065,582
Ontario	449	604	149	455	290,883
Orange	1,613	3,002	1,277	1,725	1,230,591
Orleans	382	581	202	379	180,364
Oswego	897	1,564	577	987	436,103
Otsego	127	150	21	129	128,342
Putnam	70	78	12	66	65,187
Rensselaer	696	1,816	1,014	802	476,015
Rockland	685	1,245	505	740	459,876
St. Lawrence	697	1,139	366	773	325,120
Saratoga	170	182	28	154	123,291
Schenectady	987	1,989	930	1,059	542,637
Schoharie	85	97	17	80	50,875
Schuyler	121	179	53	126	67,183
Seneca	125	203	82	121	69,641
Steuben	559	835	273	562	253,811
Suffolk	6,093	9,330	2,914	6,416	6,242,298
Sullivan	322	525	200	325	162,820
Tioga	138	166	35	131	91,058
Tompkins	469	717	222	495	257,245
Ulster	1,161	1,871	629	1,242	778,939
Warren	112	134	20	114	85,477
Washington	130	175	53	122	85,202
Wayne	329	429	102	327	159,325
Westchester	3,642	6,233	2,414	3,819	3,129,951
Wyoming	96	126	22	104	41,948
Yates	85	109	23	86	57,142

\* Includes Federally Non-Participating Family Assistance cases (non-disabled two-parent Family Assistance cases).

Table 8  
**TEMPORARY ASSISTANCE BY FUNDING SOURCE**  
 Cases, Recipients, and Expenditures by Local District  
 November 2015

Local District	Total			Federally Participating-TANF Family Assistance-FP and Safety Net Assistance-FP			Federally Non-Participating Safety Net Assistance-FNP and Family Assistance-FNP		
	Cases	Recipients	Expenditures	Cases	Recipients	Expenditures	Cases	Recipients	Expenditures
New York State	298,135	571,591	\$180,381,968	106,222	246,296	\$65,718,661	191,913	325,295	\$114,663,307
New York City	190,936	358,322	112,423,340	59,513	138,047	34,414,593	131,423	220,275	78,008,747
Rest of State	107,199	213,269	67,958,628	46,709	108,249	31,304,068	60,490	105,020	36,654,560
Albany	2,997	6,250	2,112,165	1,324	3,074	890,804	1,673	3,176	1,221,361
Allegany	460	852	216,448	208	463	101,132	252	389	115,316
Broome	3,691	6,962	1,969,792	1,631	3,619	933,887	2,060	3,343	1,035,905
Cattaraugus	724	1,138	357,826	319	641	161,332	405	497	196,494
Cayuga	934	1,741	554,922	403	965	251,580	531	776	303,342
Chautauqua	2,613	5,491	1,269,102	1,113	2,622	563,879	1,500	2,869	705,223
Chemung	743	1,261	397,914	394	785	212,852	349	476	185,062
Chenango	426	756	194,573	236	491	117,561	190	265	77,012
Clinton	878	1,393	536,837	424	806	248,200	454	587	288,637
Columbia	495	927	319,481	226	518	152,874	269	409	166,607
Cortland	679	1,127	369,944	279	614	159,371	400	513	210,573
Delaware	243	400	121,934	148	299	75,077	95	101	46,857
Dutchess	1,224	2,159	872,295	617	1,271	457,696	607	888	414,599
Erie	14,838	32,166	7,261,009	6,455	15,711	3,515,363	8,383	16,455	3,745,646
Essex	108	161	42,442	61	109	24,599	47	52	17,843
Franklin	575	1,012	307,923	219	470	120,884	356	542	187,039
Fulton	309	507	169,983	163	341	89,315	146	166	80,668
Genesee	298	556	182,315	152	351	86,144	146	205	96,171
Greene	401	730	230,787	157	368	87,046	244	362	143,741
Hamilton	17	27	5,943	6	16	2,990	11	11	2,953
Herkimer	523	892	263,048	260	531	135,440	263	361	127,608
Jefferson	1,200	2,008	657,833	461	1,017	247,758	739	991	410,075
Lewis	104	162	58,093	61	105	32,188	43	57	25,905
Livingston	736	1,353	368,965	316	727	181,687	420	626	187,278
Madison	380	679	204,921	189	404	101,711	191	275	103,210
Monroe	14,173	29,246	7,975,071	6,085	14,606	3,830,999	8,088	14,640	4,144,072
Montgomery	524	1,161	352,349	315	788	210,738	209	373	141,611
Nassau	6,787	12,522	4,772,440	2,538	5,655	1,887,683	4,249	6,867	2,884,757
Niagara	3,057	5,825	1,425,951	1,295	2,934	671,365	1,762	2,891	754,586
Oneida	4,253	9,924	1,992,930	1,831	4,708	921,904	2,422	5,216	1,071,026
Onondaga	7,253	15,656	3,860,658	3,239	7,771	1,803,949	4,014	7,885	2,056,709
Ontario	843	1,424	511,831	399	831	227,941	444	593	283,890
Orange	2,765	5,733	2,249,007	1,177	2,787	1,038,831	1,588	2,946	1,210,176
Orleans	652	1,141	321,834	282	595	148,370	370	546	173,464
Oswego	1,662	3,410	859,955	791	1,942	438,828	871	1,468	421,127
Otsego	224	321	201,053	100	182	75,990	124	139	125,063
Putnam	121	166	116,634	54	93	56,705	67	73	59,929
Rensselaer	1,625	4,043	1,039,095	938	2,257	569,035	687	1,786	470,060
Rockland	1,239	2,487	882,495	561	1,258	428,024	678	1,229	454,471
St. Lawrence	1,227	2,387	589,106	533	1,254	267,114	694	1,133	321,992
Saratoga	378	536	229,811	210	358	107,812	168	178	121,999
Schenectady	2,008	4,378	1,193,352	1,026	2,399	652,677	982	1,979	540,675
Schoharie	183	320	107,522	98	223	56,647	85	97	50,875
Schuyler	216	417	121,636	95	238	54,453	121	179	67,183
Seneca	244	462	133,715	120	260	64,422	124	202	69,293
Steuben	941	1,708	446,019	385	881	192,640	556	827	253,379
Suffolk	9,595	17,520	10,658,626	3,570	8,389	4,535,246	6,025	9,131	6,123,380
Sullivan	698	1,333	377,233	381	820	215,776	317	513	161,457
Tioga	381	628	217,770	253	474	142,135	128	154	75,635
Tompkins	751	1,303	416,565	298	626	167,097	453	677	249,468
Ulster	1,921	3,571	1,365,876	769	1,723	595,443	1,152	1,848	770,433
Warren	227	351	149,357	121	236	66,808	106	115	82,549
Washington	318	560	199,127	195	402	118,114	123	158	81,013
Wayne	647	1,090	322,567	337	708	176,035	310	382	146,532
Westchester	6,309	12,315	5,622,679	2,690	6,144	2,528,470	3,619	6,171	3,094,209
Wyoming	205	337	96,379	110	214	55,099	95	123	41,280
Yates	176	284	103,490	91	175	46,348	85	109	57,142

Table 9  
 TEMPORARY ASSISTANCE FOR NEEDY FAMILIES-FP BY PROGRAM  
 Cases, Recipients, Children, Adults and Expenditures by Local District  
 November 2015

Local District	Family Assistance-FP					Safety Net Assistance-FP				
	Cases	Recipients	Children	Adults	Expenditures	Cases	Recipients	Children	Adults	Expenditures
New York State	104,981	243,050	179,673	63,377	\$64,913,516	1,241	3,246	1,897	1,349	\$805,145
New York City	59,364	137,712	100,691	37,021	34,347,595	149	335	237	98	66,998
Rest of State	45,617	105,338	78,982	26,356	30,565,921	1,092	2,911	1,660	1,251	738,147
Albany	1,309	3,037	2,236	801	877,884	15	37	22	15	12,920
Allegany	206	455	354	101	100,019	2	8	4	4	1,113
Broome	1,590	3,507	2,644	863	909,865	41	112	62	50	24,022
Cattaraugus	304	604	486	118	154,192	15	37	21	16	7,140
Cayuga	377	884	642	242	235,139	26	81	49	32	16,441
Chautauqua	1,090	2,569	1,888	681	553,993	23	53	28	25	9,886
Chemung	389	772	662	110	210,328	5	13	6	7	2,524
Chenango	233	484	388	96	117,027	3	7	4	3	534
Clinton	418	797	657	140	246,049	6	9	4	5	2,151
Columbia	221	502	366	136	149,566	5	16	9	7	3,308
Cortland	266	582	422	160	150,987	13	32	15	17	8,384
Delaware	148	299	245	54	75,077	0	0	0	0	0
Dutchess	612	1,257	1,055	202	451,183	5	14	8	6	6,513
Erie	6,358	15,458	11,259	4,199	3,466,794	97	253	144	109	48,569
Essex	59	105	89	16	23,710	2	4	2	2	889
Franklin	218	468	336	132	118,617	1	2	1	1	2,267
Fulton	162	339	270	69	87,685	1	2	1	1	1,630
Genesee	145	332	261	71	82,116	7	19	12	7	4,028
Greene	156	366	276	90	85,498	1	2	1	1	1,548
Hamilton	6	16	13	3	2,990	0	0	0	0	0
Herkimer	256	519	405	114	132,153	4	12	5	7	3,287
Jefferson	448	986	751	235	241,143	13	31	17	14	6,615
Lewis	60	101	83	18	31,347	1	4	3	1	841
Livingston	309	711	494	217	177,411	7	16	8	8	4,276
Madison	178	366	287	79	94,318	11	38	25	13	7,393
Monroe	5,706	13,594	9,942	3,652	3,625,483	379	1,012	593	419	205,516
Montgomery	313	784	610	174	209,929	2	4	2	2	809
Nassau	2,531	5,639	4,292	1,347	1,883,254	7	16	8	8	4,429
Niagara	1,215	2,715	2,009	706	633,048	80	219	118	101	38,317
Oneida	1,797	4,620	3,347	1,273	902,630	34	88	47	41	19,274
Onondaga	3,221	7,724	5,651	2,073	1,795,076	18	47	28	19	8,873
Ontario	394	820	623	197	220,948	5	11	6	5	6,993
Orange	1,152	2,731	2,070	661	1,018,416	25	56	28	28	20,415
Orleans	270	560	421	139	141,470	12	35	22	13	6,900
Oswego	765	1,846	1,345	501	423,852	26	96	61	35	14,976
Otsego	97	171	138	33	72,711	3	11	7	4	3,279
Putnam	51	88	76	12	51,447	3	5	2	3	5,258
Rensselaer	929	2,227	1,610	617	563,080	9	30	20	10	5,955
Rockland	554	1,242	1,048	194	422,619	7	16	7	9	5,405
St. Lawrence	530	1,248	929	319	263,986	3	6	3	3	3,128
Saratoga	208	354	317	37	106,520	2	4	2	2	1,292
Schenectady	1,021	2,389	1,815	574	650,715	5	10	5	5	1,962
Schoharie	98	223	178	45	56,647	0	0	0	0	0
Schuyler	95	238	171	67	54,453	0	0	0	0	0
Seneca	119	259	188	71	64,074	1	1	0	1	348
Steuben	382	873	670	203	192,208	3	8	4	4	432
Suffolk	3,502	8,190	6,120	2,070	4,416,328	68	199	117	82	118,918
Sullivan	376	808	669	139	214,413	5	12	7	5	1,363
Tioga	243	462	379	83	126,712	10	12	2	10	15,423
Tompkins	282	586	430	156	159,320	16	40	21	19	7,777
Ulster	760	1,700	1,232	468	586,937	9	23	13	10	8,506
Warren	115	217	178	39	63,880	6	19	11	8	2,928
Washington	188	385	323	62	113,925	7	17	11	6	4,189
Wayne	318	661	513	148	163,242	19	47	27	20	12,793
Westchester	2,667	6,082	4,800	1,282	2,492,728	23	62	35	27	35,742
Wyoming	109	211	167	44	54,431	1	3	2	1	668
Yates	91	175	152	23	46,348	0	0	0	0	0

Table 10  
SAFETY NET ASSISTANCE-FNP AND FAMILY ASSISTANCE-FNP  
Cases, Recipients, Children, Adults and Expenditures by Local District  
November 2015

Local District	Safety Net Assistance-FNP and Family Assistance-FNP				
	Cases	Recipients	Children	Adults	Expenditures
New York State	191,913	325,295	114,139	211,156	\$114,663,307
New York City	131,423	220,275	73,409	146,866	78,008,747
Rest of State	60,490	105,020	40,730	64,290	36,654,560
Albany	1,673	3,176	1,371	1,805	1,221,361
Allegany	252	389	122	267	115,316
Broome	2,060	3,343	1,221	2,122	1,035,905
Cattaraugus	405	497	93	404	196,494
Cayuga	531	776	228	548	303,342
Chautauqua	1,500	2,869	1,205	1,664	705,223
Chemung	349	476	156	320	185,062
Chenango	190	265	74	191	77,012
Clinton	454	587	129	458	288,637
Columbia	269	409	130	279	166,607
Cortland	400	513	96	417	210,573
Delaware	95	101	7	94	46,857
Dutchess	607	888	319	569	414,599
Erie	8,383	16,455	7,201	9,254	3,745,646
Essex	47	52	2	50	17,843
Franklin	356	542	158	384	187,039
Fulton	146	166	25	141	80,668
Genesee	146	205	59	146	96,171
Greene	244	362	109	253	143,741
Hamilton	11	11	0	11	2,953
Herkimer	263	361	90	271	127,608
Jefferson	739	991	218	773	410,075
Lewis	43	57	19	38	25,905
Livingston	420	626	179	447	187,278
Madison	191	275	90	185	103,210
Monroe	8,088	14,640	6,198	8,442	4,144,072
Montgomery	209	373	141	232	141,611
Nassau	4,249	6,867	2,403	4,464	2,884,757
Niagara	1,762	2,891	1,027	1,864	754,586
Oneida	2,422	5,216	2,422	2,794	1,071,026
Onondaga	4,014	7,885	3,511	4,374	2,056,709
Ontario	444	593	143	450	283,890
Orange	1,588	2,946	1,249	1,697	1,210,176
Orleans	370	546	180	366	173,464
Oswego	871	1,468	516	952	421,127
Otsego	124	139	14	125	125,063
Putnam	67	73	10	63	59,929
Rensselaer	687	1,786	994	792	470,060
Rockland	678	1,229	498	731	454,471
St. Lawrence	694	1,133	363	770	321,992
Saratoga	168	178	26	152	121,999
Schenectady	982	1,979	925	1,054	540,675
Schoharie	85	97	17	80	50,875
Schuyler	121	179	53	126	67,183
Seneca	124	202	82	120	69,293
Steuben	556	827	269	558	253,379
Suffolk	6,025	9,131	2,797	6,334	6,123,380
Sullivan	317	513	193	320	161,457
Tioga	128	154	33	121	75,635
Tompkins	453	677	201	476	249,468
Ulster	1,152	1,848	616	1,232	770,433
Warren	106	115	9	106	82,549
Washington	123	158	42	116	81,013
Wayne	310	382	75	307	146,532
Westchester	3,619	6,171	2,379	3,792	3,094,209
Wyoming	95	123	20	103	41,280
Yates	85	109	23	86	57,142

Table 11  
**SAFETY NET ASSISTANCE-FNP BY MAINTENANCE OF EFFORT STATUS**  
Maintenance of Effort (MOE) vs. Non-Maintenance of Effort (Non-MOE)  
Cases, Recipients, Children, Adults and Expenditures by Local District  
November 2015

Local District	Maintenance of Effort (MOE)					Non-Maintenance of Effort (Non-MOE)*				
	Cases	Recipients	Children	Adults	Expenditures	Cases	Recipients	Children	Adults	Expenditures
New York State	38,337	125,942	83,621	42,321	\$25,741,371	153,576	199,353	30,518	168,835	\$88,921,936
New York City	27,166	86,629	55,943	30,686	16,751,606	104,257	133,646	17,466	116,180	61,257,141
Rest of State	11,171	39,313	27,678	11,635	8,989,765	49,319	65,707	13,052	52,655	27,664,795
Albany	366	1,325	946	379	299,925	1,307	1,851	425	1,426	921,436
Allegany	37	119	81	38	22,900	215	270	41	229	92,416
Broome	345	1,177	814	363	208,767	1,715	2,166	407	1,759	827,138
Cattaraugus	21	70	48	22	13,234	384	427	45	382	183,260
Cayuga	58	183	125	58	35,409	473	593	103	490	267,933
Chautauqua	374	1,260	849	411	233,115	1,126	1,609	356	1,253	472,108
Chemung	31	118	88	30	22,552	318	358	68	290	162,510
Chenango	11	37	26	11	5,359	179	228	48	180	71,653
Clinton	45	129	82	47	28,445	409	458	47	411	260,192
Columbia	35	124	88	36	26,068	234	285	42	243	140,539
Cortland	24	70	45	25	13,551	376	443	51	392	197,022
Delaware	0	0	0	0	0	95	101	7	94	46,857
Dutchess	91	321	227	94	65,144	516	567	92	475	349,455
Erie	1,669	6,024	4,311	1,713	1,043,037	6,714	10,431	2,890	7,541	2,702,609
Essex	0	0	0	0	0	47	52	2	50	17,843
Franklin	34	113	78	35	17,647	322	429	80	349	169,392
Fulton	2	6	4	2	990	144	160	21	139	79,678
Genesee	14	53	39	14	9,872	132	152	20	132	86,299
Greene	40	132	92	40	23,882	204	230	17	213	119,859
Hamilton	0	0	0	0	0	11	11	0	11	2,953
Herkimer	29	103	72	31	19,187	234	258	18	240	108,421
Jefferson	44	141	96	45	25,718	695	850	122	728	384,357
Lewis	1	4	3	1	1,240	42	53	16	37	24,665
Livingston	50	157	102	55	33,974	370	469	77	392	153,304
Madison	24	89	63	26	17,351	167	186	27	159	85,859
Monroe	2,067	7,278	5,133	2,145	1,367,877	6,021	7,362	1,065	6,297	2,776,195
Montgomery	45	156	105	51	33,942	164	217	36	181	107,669
Nassau	847	2,715	1,850	865	839,101	3,402	4,152	553	3,599	2,045,656
Niagara	305	1,064	742	322	163,638	1,457	1,827	285	1,542	590,948
Oneida	461	1,799	1,306	493	263,657	1,961	3,417	1,116	2,301	807,369
Onondaga	716	2,752	2,016	736	423,493	3,298	5,133	1,495	3,638	1,633,216
Ontario	33	115	82	33	22,190	411	478	61	417	261,700
Orange	372	1,338	946	392	364,868	1,216	1,608	303	1,305	845,308
Orleans	43	150	106	44	29,324	327	396	74	322	144,140
Oswego	113	376	258	118	64,653	758	1,092	258	834	356,474
Otsego	0	0	0	0	0	124	139	14	125	125,063
Putnam	2	4	2	2	894	65	69	8	61	59,035
Rensselaer	240	882	633	249	151,018	447	904	361	543	319,042
Rockland	79	302	218	84	55,556	599	927	280	647	398,915
St. Lawrence	79	241	164	77	38,207	615	892	199	693	283,785
Saratoga	0	0	0	0	0	168	178	26	152	121,999
Schenectady	226	871	637	234	151,484	756	1,108	288	820	389,191
Schoharie	2	6	4	2	1,820	83	91	13	78	49,055
Schuyler	12	36	22	14	8,204	109	143	31	112	58,979
Seneca	21	73	51	22	11,579	103	129	31	98	57,714
Steuben	68	235	164	71	34,080	488	592	105	487	219,299
Suffolk	825	3,030	2,143	887	1,531,899	5,200	6,101	654	5,447	4,591,481
Sullivan	45	159	114	45	27,939	272	354	79	275	133,518
Tioga	9	27	21	6	5,521	119	127	12	115	70,114
Tompkins	50	181	129	52	29,925	403	496	72	424	219,543
Ulster	169	571	400	171	138,534	983	1,277	216	1,061	631,899
Warren	2	7	6	1	1,114	104	108	3	105	81,435
Washington	6	19	12	7	4,183	117	139	30	109	76,830
Wayne	18	54	37	17	11,460	292	328	38	290	135,072
Westchester	963	3,083	2,075	1,008	1,039,544	2,656	3,088	304	2,784	2,054,665
Wyoming	6	27	18	9	4,103	89	96	2	94	37,177
Yates	2	7	5	2	2,591	83	102	18	84	54,551

\* The Non-MOE category includes otherwise Temporary Assistance for Needy Families eligible or otherwise Safety Net Assistance MOE eligible non-disabled two-parent cases.

Table 12  
SAFETY NET ASSISTANCE-FNP-CASH TOTAL\*  
Cases, Recipients, Children, Adults and Expenditures by Local District  
November 2015

Local District	Safety Net Assistance-FNP Cash Total				
	Cases	Recipients	Children	Adults	Expenditures
New York State	See Note	See Note	See Note	See Note	See Note
New York City	See Note	See Note	See Note	See Note	See Note
Rest of State	34,444	49,116	11,935	37,181	\$19,086,860
Albany	940	1,426	380	1,046	657,861
Allegany	132	180	34	146	51,754
Broome	1,134	1,448	269	1,179	491,857
Cattaraugus	282	343	53	290	133,133
Cayuga	361	468	94	374	196,361
Chautauqua	757	1,136	288	848	293,811
Chemung	272	324	81	243	136,152
Chenango	148	192	46	146	55,945
Clinton	326	398	70	328	205,078
Columbia	147	193	37	156	78,407
Cortland	238	295	44	251	115,959
Delaware	76	82	7	75	31,588
Dutchess	367	479	136	343	242,085
Erie	4,807	8,100	2,592	5,508	1,992,131
Essex	39	44	2	42	16,079
Franklin	243	336	71	265	129,603
Fulton	109	125	21	104	54,416
Genesee	68	80	12	68	32,928
Greene	148	178	19	159	84,479
Hamilton	9	9	0	9	2,285
Herkimer	169	201	25	176	73,496
Jefferson	492	634	110	524	256,785
Lewis	26	36	10	26	11,267
Livingston	315	416	79	337	125,426
Madison	134	186	58	128	72,679
Monroe	3,890	5,390	1,273	4,117	1,833,655
Montgomery	121	175	37	138	75,253
Nassau	2,296	2,835	404	2,431	1,404,079
Niagara	938	1,216	220	996	372,822
Oneida	1,523	2,815	1,000	1,815	607,821
Onondaga	2,909	4,835	1,614	3,221	1,457,046
Ontario	281	328	39	289	164,174
Orange	808	1,124	250	874	538,238
Orleans	212	280	75	205	94,483
Oswego	578	853	213	640	268,989
Otsego	98	112	10	102	96,157
Putnam	46	50	8	42	37,310
Rensselaer	339	636	234	402	235,454
Rockland	294	422	105	317	182,351
St. Lawrence	419	625	148	477	182,441
Saratoga	117	127	25	102	65,655
Schenectady	534	764	191	573	258,085
Schoharie	70	78	13	65	39,677
Schuyler	85	109	26	83	44,424
Seneca	74	107	36	71	39,766
Steuben	376	466	86	380	164,568
Suffolk	3,783	4,805	808	3,997	3,444,650
Sullivan	177	235	63	172	77,647
Tioga	99	107	11	96	52,303
Tompkins	256	323	48	275	143,166
Ulster	636	869	173	696	430,556
Warren	74	78	3	75	47,677
Washington	100	125	34	91	63,705
Wayne	198	232	31	201	87,291
Westchester	1,247	1,533	197	1,336	974,100
Wyoming	64	73	6	67	24,677
Yates	63	80	16	64	37,075

Note: A breakout of Safety Net Assistance-FNP-Cash and Safety Net Assistance-FNP-Non-Cash data is not available for New York City.

\* May include otherwise Temporary Assistance for Needy Families eligible or otherwise Safety Net Assistance MOE eligible non-disabled two-parent cases.

Table 13  
**SAFETY NET ASSISTANCE-FNP-CASH BY MAINTENANCE OF EFFORT STATUS**  
 Maintenance of Effort (MOE) vs. Non-Maintenance of Effort (Non-MOE)  
 Cases, Recipients, Children, Adults and Expenditures by Local District  
 November 2015

Local District	Maintenance of Effort (MOE)					Non-Maintenance of Effort (Non-MOE)*				
	Cases	Recipients	Children	Adults	Expenditures	Cases	Recipients	Children	Adults	Expenditures
New York State	See Note	See Note	See Note	See Note	See Note	See Note	See Note	See Note	See Note	See Note
New York City	See Note	See Note	See Note	See Note	See Note	See Note	See Note	See Note	See Note	See Note
Rest of State	1,316	4,369	2,915	1,454	\$1,062,498	33,128	44,747	9,020	35,727	\$18,024,362
Albany	31	99	63	36	22,792	909	1,327	317	1,010	635,069
Allegany	1	5	3	2	995	131	175	31	144	50,759
Broome	24	74	46	28	15,006	1,110	1,374	223	1,151	476,851
Cattaraugus	12	34	21	13	7,284	270	309	32	277	125,849
Cayuga	5	17	14	3	3,259	356	451	80	371	193,102
Chautauqua	27	82	50	32	13,844	730	1,054	238	816	279,967
Chemung	8	25	17	8	5,272	264	299	64	235	130,880
Chenango	2	9	7	2	1,666	146	183	39	144	54,279
Clinton	20	50	30	20	11,864	306	348	40	308	193,214
Columbia	3	9	6	3	2,219	144	184	31	153	76,188
Cortland	1	3	2	1	670	237	292	42	250	115,289
Delaware	0	0	0	0	0	76	82	7	75	31,588
Dutchess	33	114	79	35	27,949	334	365	57	308	214,136
Erie	228	737	492	245	140,737	4,579	7,363	2,100	5,263	1,851,394
Essex	0	0	0	0	0	39	44	2	42	16,079
Franklin	3	11	8	3	1,903	240	325	63	262	127,700
Fulton	0	0	0	0	0	109	125	21	104	54,416
Genesee	1	3	2	1	630	67	77	10	67	32,298
Greene	2	10	7	3	3,379	146	168	12	156	81,100
Hamilton	0	0	0	0	0	9	9	0	9	2,285
Herkimer	8	26	16	10	4,955	161	175	9	166	68,541
Jefferson	10	26	15	11	5,060	482	608	95	513	251,725
Lewis	0	0	0	0	0	26	36	10	26	11,267
Livingston	11	30	16	14	4,877	304	386	63	323	120,549
Madison	13	46	32	14	9,489	121	140	26	114	63,190
Monroe	221	738	505	233	151,260	3,669	4,652	768	3,884	1,682,395
Montgomery	6	19	12	7	4,352	115	156	25	131	70,901
Nassau	49	135	84	51	48,833	2,247	2,700	320	2,380	1,355,246
Niagara	36	114	70	44	18,654	902	1,102	150	952	354,168
Oneida	60	216	146	70	35,300	1,463	2,599	854	1,745	572,521
Onondaga	193	737	523	214	120,881	2,716	4,098	1,091	3,007	1,336,165
Ontario	0	0	0	0	0	281	328	39	289	164,174
Orange	35	119	78	41	29,708	773	1,005	172	833	508,530
Orleans	5	19	13	6	2,929	207	261	62	199	91,554
Oswego	12	33	21	12	5,478	566	820	192	628	263,511
Otsego	0	0	0	0	0	98	112	10	102	96,157
Putnam	1	2	1	1	291	45	48	7	41	37,019
Rensselaer	2	8	6	2	1,088	337	628	228	400	234,366
Rockland	4	18	12	6	753	290	404	93	311	181,598
St. Lawrence	12	27	15	12	5,248	407	598	133	465	177,193
Saratoga	0	0	0	0	0	117	127	25	102	65,655
Schenectady	10	28	18	10	3,572	524	736	173	563	254,513
Schoharie	0	0	0	0	0	70	78	13	65	39,677
Schuyler	3	8	4	4	1,849	82	101	22	79	42,575
Seneca	6	21	15	6	3,922	68	86	21	65	35,844
Steuben	2	3	2	1	1,950	374	463	84	379	162,618
Suffolk	143	539	365	174	289,834	3,640	4,266	443	3,823	3,154,816
Sullivan	3	8	5	3	1,646	174	227	58	169	76,001
Tioga	0	0	0	0	0	99	107	11	96	52,303
Tompkins	3	8	5	3	1,925	253	315	43	272	141,241
Ulster	9	22	12	10	5,641	627	847	161	686	424,915
Warren	0	0	0	0	0	74	78	3	75	47,677
Washington	3	12	9	3	1,801	97	113	25	88	61,904
Wayne	6	15	9	6	4,020	192	217	22	195	83,271
Westchester	48	105	55	50	36,929	1,199	1,428	142	1,286	937,171
Wyoming	1	5	4	1	784	63	68	2	66	23,893
Yates	0	0	0	0	0	63	80	16	64	37,075

Note: A breakout of Safety Net Assistance-FNP-Cash and Safety Net Assistance-FNP-Non-Cash data is not available for New York City.

\* The Non-MOE category includes otherwise Temporary Assistance for Needy Families eligible or otherwise Safety Net Assistance MOE eligible non-disabled two-parent cases.



Table 14  
SAFETY NET ASSISTANCE-FNP-NON-CASH TOTAL\*  
Cases, Recipients, Children, Adults and Expenditures by Local District  
November 2015

Local District	Safety Net Assistance-FNP-Non-Cash Total				
	Cases	Recipients	Children	Adults	Expenditures
New York State	See Note	See Note	See Note	See Note	See Note
New York City	See Note	See Note	See Note	See Note	See Note
Rest of State	26,046	55,904	28,795	27,109	\$17,567,700
Albany	733	1,750	991	759	563,500
Allegany	120	209	88	121	63,562
Broome	926	1,895	952	943	544,048
Cattaraugus	123	154	40	114	63,361
Cayuga	170	308	134	174	106,981
Chautauqua	743	1,733	917	816	411,412
Chemung	77	152	75	77	48,910
Chenango	42	73	28	45	21,067
Clinton	128	189	59	130	83,559
Columbia	122	216	93	123	88,200
Cortland	162	218	52	166	94,614
Delaware	19	19	0	19	15,269
Dutchess	240	409	183	226	172,514
Erie	3,576	8,355	4,609	3,746	1,753,515
Essex	8	8	0	8	1,764
Franklin	113	206	87	119	57,436
Fulton	37	41	4	37	26,252
Genesee	78	125	47	78	63,243
Greene	96	184	90	94	59,262
Hamilton	2	2	0	2	668
Herkimer	94	160	65	95	54,112
Jefferson	247	357	108	249	153,290
Lewis	17	21	9	12	14,638
Livingston	105	210	100	110	61,852
Madison	57	89	32	57	30,531
Monroe	4,198	9,250	4,925	4,325	2,310,417
Montgomery	88	198	104	94	66,358
Nassau	1,953	4,032	1,999	2,033	1,480,678
Niagara	824	1,675	807	868	381,764
Oneida	899	2,401	1,422	979	463,205
Onondaga	1,105	3,050	1,897	1,153	599,663
Ontario	163	265	104	161	119,716
Orange	780	1,822	999	823	671,938
Orleans	158	266	105	161	78,981
Oswego	293	615	303	312	152,138
Otsego	26	27	4	23	28,906
Putnam	21	23	2	21	22,619
Rensselaer	348	1,150	760	390	234,606
Rockland	384	807	393	414	272,120
St. Lawrence	275	508	215	293	139,551
Saratoga	51	51	1	50	56,344
Schenectady	448	1,215	734	481	282,590
Schoharie	15	19	4	15	11,198
Schuyler	36	70	27	43	22,759
Seneca	50	95	46	49	29,527
Steuben	180	361	183	178	88,811
Suffolk	2,242	4,326	1,989	2,337	2,678,730
Sullivan	140	278	130	148	83,810
Tioga	29	47	22	25	23,332
Tompkins	197	354	153	201	106,302
Ulster	516	979	443	536	339,877
Warren	32	37	6	31	34,872
Washington	23	33	8	25	17,308
Wayne	112	150	44	106	59,241
Westchester	2,372	4,638	2,182	2,456	2,120,109
Wyoming	31	50	14	36	16,603
Yates	22	29	7	22	20,067

Note: A breakout of Safety Net Assistance-FNP-Cash and Safety Net Assistance-FNP-Non-Cash data is not available for New York City.

\* May include otherwise Temporary Assistance for Needy Families eligible or otherwise Safety Net Assistance MOE eligible non-disabled two-parent cases.

Table 15  
SAFETY NET ASSISTANCE-FNP-NON-CASH BY MAINTENANCE OF EFFORT STATUS  
Maintenance of Effort (MOE) vs. Non-Maintenance of Effort (Non-MOE)  
Cases, Recipients, Children, Adults and Expenditures by Local District  
November 2015

Local District	Maintenance of Effort (MOE)					Non-Maintenance of Effort (Non-MOE)*				
	Cases	Recipients	Children	Adults	Expenditures	Cases	Recipients	Children	Adults	Expenditures
New York State	See Note	See Note	See Note	See Note	See Note	See Note	See Note	See Note	See Note	See Note
New York City	See Note	See Note	See Note	See Note	See Note	See Note	See Note	See Note	See Note	See Note
Rest of State	9,855	34,944	24,763	10,181	\$7,927,267	16,191	20,960	4,032	16,928	\$9,640,433
Albany	335	1,226	883	343	277,133	398	524	108	416	286,367
Allegany	36	114	78	36	21,905	84	95	10	85	41,657
Broome	321	1,103	768	335	193,761	605	792	184	608	350,287
Cattaraugus	9	36	27	9	5,950	114	118	13	105	57,411
Cayuga	53	166	111	55	32,150	117	142	23	119	74,831
Chautauqua	347	1,178	799	379	219,271	396	555	118	437	192,141
Chemung	23	93	71	22	17,280	54	59	4	55	31,630
Chenango	9	28	19	9	3,693	33	45	9	36	17,374
Clinton	25	79	52	27	16,581	103	110	7	103	66,978
Columbia	32	115	82	33	23,849	90	101	11	90	64,351
Cortland	23	67	43	24	12,881	139	151	9	142	81,733
Delaware	0	0	0	0	0	19	19	0	19	15,269
Dutchess	58	207	148	59	37,195	182	202	35	167	135,319
Erie	1,441	5,287	3,819	1,468	902,300	2,135	3,068	790	2,278	851,215
Essex	0	0	0	0	0	8	8	0	8	1,764
Franklin	31	102	70	32	15,744	82	104	17	87	41,692
Fulton	2	6	4	2	990	35	35	0	35	25,262
Genesee	13	50	37	13	9,242	65	75	10	65	54,001
Greene	38	122	85	37	20,503	58	62	5	57	38,759
Hamilton	0	0	0	0	0	2	2	0	2	668
Herkimer	21	77	56	21	14,232	73	83	9	74	39,880
Jefferson	34	115	81	34	20,658	213	242	27	215	132,632
Lewis	1	4	3	1	1,240	16	17	6	11	13,398
Livingston	39	127	86	41	29,097	66	83	14	69	32,755
Madison	11	43	31	12	7,862	46	46	1	45	22,669
Monroe	1,846	6,540	4,628	1,912	1,216,617	2,352	2,710	297	2,413	1,093,800
Montgomery	39	137	93	44	29,590	49	61	11	50	36,768
Nassau	798	2,580	1,766	814	790,268	1,155	1,452	233	1,219	690,410
Niagara	269	950	672	278	144,984	555	725	135	590	236,780
Oneida	401	1,583	1,160	423	228,357	498	818	262	556	234,848
Onondaga	523	2,015	1,493	522	302,612	582	1,035	404	631	297,051
Ontario	33	115	82	33	22,190	130	150	22	128	97,526
Orange	337	1,219	868	351	335,160	443	603	131	472	336,778
Orleans	38	131	93	38	26,395	120	135	12	123	52,586
Oswego	101	343	237	106	59,175	192	272	66	206	92,963
Otsego	0	0	0	0	0	26	27	4	23	28,906
Putnam	1	2	1	1	603	20	21	1	20	22,016
Rensselaer	238	874	627	247	149,930	110	276	133	143	84,676
Rockland	75	284	206	78	54,803	309	523	187	336	217,317
St. Lawrence	67	214	149	65	32,959	208	294	66	228	106,592
Saratoga	0	0	0	0	0	51	51	1	50	56,344
Schenectady	216	843	619	224	147,912	232	372	115	257	134,678
Schoharie	2	6	4	2	1,820	13	13	0	13	9,378
Schuyler	9	28	18	10	6,355	27	42	9	33	16,404
Seneca	15	52	36	16	7,657	35	43	10	33	21,870
Steuben	66	232	162	70	32,130	114	129	21	108	56,681
Suffolk	682	2,491	1,778	713	1,242,065	1,560	1,835	211	1,624	1,436,665
Sullivan	42	151	109	42	26,293	98	127	21	106	57,517
Tioga	9	27	21	6	5,521	20	20	1	19	17,811
Tompkins	47	173	124	49	28,000	150	181	29	152	78,302
Ulster	160	549	388	161	132,893	356	430	55	375	206,984
Warren	2	7	6	1	1,114	30	30	0	30	33,758
Washington	3	7	3	4	2,382	20	26	5	21	14,926
Wayne	12	39	28	11	7,440	100	111	16	95	51,801
Westchester	915	2,978	2,020	958	1,002,615	1,457	1,660	162	1,498	1,117,494
Wyoming	5	22	14	8	3,319	26	28	0	28	13,284
Yates	2	7	5	2	2,591	20	22	2	20	17,476

Note: A breakout of Safety Net Assistance-FNP-Cash and Safety Net Assistance-FNP-Non-Cash data is not available for New York City.

\* The Non-MOE category includes otherwise Temporary Assistance for Needy Families eligible or otherwise Safety Net Assistance MOE eligible non-disabled two-parent cases.

Table 16  
**SUPPLEMENTAL NUTRITION ASSISTANCE PROGRAM**  
 Households, Persons and Value of Supplemental Nutrition Assistance Program Benefits by Local District  
 November 2015

Local District	Total			Temporary Assistance			Non-Temporary Assistance		
	Households	Persons	SNAP Benefits	Households	Persons	SNAP Benefits	Households	Persons	SNAP Benefits
New York State	1,640,839	2,982,398	\$418,495,674	674,651	1,021,189	\$159,743,324	966,188	1,961,209	\$258,752,350
New York City	945,838	1,686,941	250,570,264	442,697	674,560	108,387,747	503,141	1,012,381	142,182,517
Rest of State	695,001	1,295,457	167,925,410	231,954	346,629	51,355,577	463,047	948,828	116,569,833
Albany	19,653	36,524	4,668,292	6,661	10,116	1,491,505	12,992	26,408	3,176,787
Allegany	3,210	6,012	704,831	1,195	1,663	243,215	2,015	4,349	461,616
Broome	16,986	31,192	4,036,364	6,831	10,594	1,622,977	10,155	20,598	2,413,387
Cattaraugus	6,405	12,311	1,464,195	1,832	2,328	355,626	4,573	9,983	1,108,569
Cayuga	5,521	10,539	1,304,844	1,647	2,478	368,647	3,874	8,061	936,197
Chautauqua	13,836	26,360	3,403,690	4,517	7,431	1,086,773	9,319	18,929	2,316,917
Chemung	8,046	15,665	2,038,433	2,234	2,836	438,354	5,812	12,829	1,600,079
Chenango	3,769	7,286	866,048	1,112	1,421	213,695	2,657	5,865	652,353
Clinton	6,705	11,494	1,408,155	2,418	3,068	463,718	4,287	8,426	944,437
Columbia	3,694	6,286	805,312	1,305	1,771	272,469	2,389	4,515	532,843
Cortland	3,693	6,648	826,446	1,163	1,643	250,482	2,530	5,005	575,964
Delaware	3,116	6,104	719,879	850	1,021	151,474	2,266	5,083	568,405
Dutchess	12,772	22,526	2,946,264	3,736	4,694	726,764	9,036	17,832	2,219,500
Erie	83,438	155,036	20,332,115	29,040	47,131	7,038,865	54,398	107,905	13,293,250
Essex	1,992	3,519	435,206	692	767	118,350	1,300	2,752	316,856
Franklin	4,093	7,399	956,045	1,563	2,096	323,040	2,530	5,303	633,005
Fulton	4,815	8,832	1,084,738	1,411	1,647	265,634	3,404	7,185	819,104
Genesee	3,133	5,714	676,636	906	1,195	179,005	2,227	4,519	497,631
Greene	3,205	5,598	732,219	1,084	1,467	223,122	2,121	4,131	509,097
Hamilton	221	357	43,587	61	70	12,319	160	287	31,268
Herkimer	5,314	9,935	1,188,045	1,337	1,729	267,772	3,977	8,206	920,273
Jefferson	8,297	15,483	1,902,430	2,509	3,427	520,397	5,788	12,056	1,382,033
Lewis	1,807	3,424	390,188	415	507	71,942	1,392	2,917	318,246
Livingston	3,796	7,003	878,116	1,322	2,022	304,845	2,474	4,981	573,271
Madison	4,438	8,534	1,052,314	1,054	1,373	208,267	3,384	7,161	844,047
Monroe	66,602	122,415	16,258,932	26,970	43,760	6,426,809	39,632	78,655	9,832,123
Montgomery	4,722	9,566	1,199,519	1,498	2,285	333,834	3,224	7,281	865,685
Nassau	40,244	64,637	8,393,746	16,135	22,253	3,270,896	24,109	42,384	5,122,850
Niagara	17,738	31,665	4,103,079	5,894	8,734	1,328,332	11,844	22,931	2,774,747
Oneida	20,123	40,764	5,107,787	7,988	14,015	2,007,993	12,135	26,749	3,099,794
Onondaga	38,349	73,222	9,432,753	13,294	22,501	3,226,927	25,055	50,721	6,205,826
Ontario	5,406	9,631	1,182,239	1,721	2,357	364,619	3,685	7,274	817,620
Orange	19,733	46,114	5,963,857	6,101	9,145	1,332,212	13,632	36,969	4,631,645
Orleans	3,115	5,974	712,720	1,048	1,554	236,328	2,067	4,420	476,392
Oswego	9,511	19,537	2,391,208	2,989	4,953	718,308	6,522	14,584	1,672,900
Otsego	3,223	5,963	709,374	870	970	154,074	2,353	4,993	555,300
Putnam	1,694	2,652	343,874	522	568	86,403	1,172	2,084	257,471
Rensselaer	8,824	17,531	2,174,316	3,381	6,083	833,525	5,443	11,448	1,340,791
Rockland	16,812	46,778	6,066,717	4,007	5,397	821,207	12,805	41,381	5,245,510
St. Lawrence	8,280	16,015	1,929,743	3,006	4,261	621,605	5,274	11,754	1,308,138
Saratoga	8,426	14,570	1,763,877	1,908	2,098	335,997	6,518	12,472	1,427,880
Schenectady	12,765	23,889	3,221,465	4,611	7,042	1,029,861	8,154	16,847	2,191,604
Schoharie	2,010	3,713	459,705	525	671	103,411	1,485	3,042	356,294
Schuyler	1,235	2,382	285,861	359	551	83,606	876	1,831	202,255
Seneca	1,779	3,328	411,126	586	836	120,180	1,193	2,492	290,946
Steuben	5,872	11,652	1,357,704	1,988	2,813	411,668	3,884	8,839	946,036
Suffolk	75,332	128,479	17,815,335	21,420	29,829	4,493,245	53,912	98,650	13,322,090
Sullivan	6,425	12,719	1,641,796	1,958	2,642	384,910	4,467	10,077	1,256,886
Tioga	3,067	6,211	721,821	803	1,092	161,688	2,264	5,119	560,133
Tompkins	4,961	8,719	1,110,410	1,502	2,105	317,709	3,459	6,614	792,701
Ulster	11,772	20,700	2,737,764	4,104	5,848	898,000	7,668	14,852	1,839,764
Warren	3,920	7,040	849,170	1,085	1,255	196,116	2,835	5,785	653,054
Washington	3,972	7,500	900,955	1,019	1,305	197,350	2,953	6,195	703,605
Wayne	5,580	10,264	1,223,712	1,707	2,200	336,569	3,873	8,064	887,143
Westchester	48,517	86,495	11,945,929	15,163	21,876	3,134,025	33,354	64,619	8,811,904
Wyoming	1,644	2,949	337,594	517	659	98,338	1,127	2,290	239,256
Yates	1,393	2,602	306,930	380	476	70,575	1,013	2,126	236,355

Note: Supplemental Nutrition Assistance Program households containing only Supplemental Security Income recipients or a mix of Temporary Assistance and Supplemental Security Income recipients are counted as Temporary Assistance.

Table 17  
**SUPPLEMENTAL SECURITY INCOME**  
 Recipients, Total Program Expenditures and Federal and State Shares, by Local District  
 November 2015

Local District	Recipients	Expenditures		
		Total	Federal	State
New York State*	710,076	\$423,778,757	\$372,170,400	\$51,608,357
New York City	427,738	257,463,028	227,910,581	29,552,447
Rest of State	277,825	164,212,731	142,801,130	21,411,601
Albany	7,518	4,553,790	4,040,686	513,104
Allegany	1,591	911,522	798,324	113,198
Broome	7,342	4,499,191	4,045,143	454,048
Cattaraugus	2,628	1,471,291	1,284,850	186,441
Cayuga	1,998	1,171,272	1,005,894	165,378
Chautauqua	5,119	2,963,107	2,593,675	369,432
Chemung	3,572	2,078,507	1,835,912	242,595
Chenango	1,641	905,249	804,171	101,078
Clinton	3,168	1,870,041	1,635,591	234,450
Columbia	1,709	1,099,528	917,233	182,295
Cortland	1,305	745,718	650,074	95,644
Delaware	1,333	743,416	638,089	105,327
Dutchess	6,025	3,535,755	2,905,297	630,458
Erie	30,626	18,539,316	16,360,454	2,178,862
Essex	1,101	633,171	498,474	134,697
Franklin	1,857	1,115,141	955,154	159,987
Fulton	2,302	1,342,613	1,139,751	202,862
Genesee	1,309	806,027	686,525	119,502
Greene	1,522	899,454	790,482	108,972
Hamilton	69	44,323	40,024	4,299
Herkimer	1,808	984,322	848,177	136,145
Jefferson	3,056	1,821,133	1,589,591	231,542
Lewis	651	356,279	315,400	40,879
Livingston	1,320	832,022	757,528	74,494
Madison	1,455	831,619	728,847	102,772
Monroe	27,846	17,529,574	15,606,240	1,923,334
Montgomery	2,079	1,257,059	1,098,156	158,903
Nassau	19,326	10,871,984	9,209,217	1,662,767
Niagara	6,446	3,826,416	3,353,603	472,813
Oneida	8,882	5,255,411	4,659,361	596,050
Onondaga	15,530	9,783,380	8,808,575	974,805
Ontario	2,077	1,151,298	1,011,483	139,815
Orange	7,448	4,384,292	3,802,520	581,772
Orleans	1,060	639,453	570,929	68,524
Oswego	3,591	2,171,112	1,970,474	200,638
Otsego	1,551	893,484	745,870	147,614
Putnam	924	499,949	411,828	88,121
Rensselaer	4,888	2,945,135	2,539,840	405,295
Rockland	5,619	3,225,643	2,485,740	739,903
St. Lawrence	4,083	2,378,612	2,116,677	261,935
Saratoga	3,198	1,751,093	1,523,436	227,657
Schenectady	5,983	3,672,383	3,272,452	399,931
Schoharie	749	419,901	344,677	75,224
Schuyler	484	260,652	211,722	48,930
Seneca	849	503,791	445,885	57,906
Steuben	3,241	1,867,449	1,666,893	200,556
Suffolk	23,333	13,370,479	11,245,183	2,125,296
Sullivan	2,845	1,602,201	1,304,842	297,359
Tioga	1,267	732,455	653,056	79,399
Tompkins	1,719	1,013,927	872,680	141,247
Ulster	4,545	2,543,456	2,165,266	378,190
Warren	1,772	999,258	865,389	133,869
Washington	1,755	966,038	840,763	125,275
Wayne	2,320	1,424,477	1,280,541	143,936
Westchester	19,121	10,757,184	9,183,103	1,574,081
Wyoming	721	436,264	390,411	45,853
Yates	548	325,114	278,972	46,142
Mental Hygiene	4,513	2,102,998	1,458,689	644,309

\* Only New York State includes Mental Hygiene

Table 18  
**SUPPLEMENTAL SECURITY INCOME**  
 Recipients by Living Arrangement and Location  
 November 2015

Living Arrangement	New York State	New York City	Rest of State	Mental Hygiene
Living Alone	337,089	219,586	117,501	2
Living With Others	283,773	164,231	119,525	17
Living in Household of Another	29,361	17,694	11,667	0
Congregate Care Level 1	2,463	283	555	1,625
Congregate Care Level 2	26,433	9,688	15,915	830
Congregate Care Level 3	12,829	6,465	6,362	2
Title XIX Institution	12,900	7,940	4,414	546
Other*	5,228	1,911	1,886	1,431
<b>Total</b>	<b>710,076</b>	<b>427,798</b>	<b>277,825</b>	<b>4,453</b>

Table 19  
**SUPPLEMENTAL SECURITY INCOME**  
 Recipients by Living Arrangement and Category of Assistance  
 November 2015

Living Arrangement	Total	Category of Assistance		
		Aged	Blind	Disabled
Living Alone	337,089	95,724	1,260	240,105
Living With Others	283,773	26,629	1,278	255,866
Living in Household of Another	29,361	8,282	228	20,851
Congregate Care Level 1	2,463	270	12	2,181
Congregate Care Level 2	26,433	1,560	90	24,783
Congregate Care Level 3	12,829	5,087	32	7,710
Title XIX Institution & Other*	18,128	2,751	93	15,284
<b>Total</b>	<b>710,076</b>	<b>140,303</b>	<b>2,993</b>	<b>566,780</b>

\* "Other" includes recipients either a) residing in a private medical facility and Medicaid is paying for less than 50% of the cost of care, b) residing in certain publicly operated residential facilities serving 16 or fewer residents, or c) residing in a public emergency shelter for six calendar months during a nine month period. Such cases receive no state Supplemental Security Income supplement.

Table 20  
CHILD SUPPORT COLLECTIONS (IV-D)  
November 2015

Local District	Total	Current Assistance	Former Assistance	Never Assistance
New York State	\$136,552,837.20	\$5,073,774.75	\$67,854,825.64	\$63,624,236.77
New York City	56,210,395.49	2,419,730.68	28,725,732.42	25,064,932.39
Rest of State	80,342,441.67	2,654,044.07	39,129,093.22	38,559,304.38
Albany	2,218,246.62	63,078.49	988,936.09	1,166,232.04
Allegany	434,046.66	18,729.38	288,205.05	127,112.23
Broome	1,240,107.38	69,831.83	681,729.33	488,546.22
Cattaraugus	745,081.77	27,978.21	423,756.55	293,347.01
Cayuga	649,989.60	25,434.49	386,048.55	238,506.56
Chautauqua	986,922.16	71,036.58	619,168.16	296,717.42
Chemung	680,032.12	30,348.46	407,213.48	242,470.18
Chenango	382,399.86	14,366.68	226,030.88	142,002.30
Clinton	732,890.29	41,817.70	369,405.56	321,667.03
Columbia	433,392.89	15,854.59	234,975.21	182,563.09
Cortland	348,499.66	17,681.09	212,223.43	118,595.14
Delaware	307,829.24	13,331.55	204,997.63	89,500.06
Dutchess	2,315,893.84	48,844.40	900,699.86	1,366,349.58
Erie	5,653,151.50	292,103.09	3,127,016.59	2,234,031.82
Essex	280,385.02	7,003.23	156,238.80	117,142.99
Franklin	412,470.16	11,270.91	218,043.46	183,155.79
Fulton	473,173.67	11,518.98	319,655.27	141,999.42
Genesee	447,002.98	8,951.28	232,950.95	205,100.75
Greene	340,614.97	12,630.30	172,383.18	155,601.49
Hamilton	23,151.65	605.82	13,215.11	9,330.72
Herkimer	433,129.64	17,132.59	243,981.86	172,015.19
Jefferson	1,214,979.87	42,552.51	497,657.35	674,770.01
Lewis	317,523.75	6,297.10	205,683.68	105,542.97
Livingston	546,135.10	28,427.97	315,005.88	202,701.25
Madison	462,317.43	17,779.80	256,381.88	188,155.75
Monroe	5,209,387.12	216,374.35	2,842,018.30	2,150,994.47
Montgomery	445,433.74	22,274.87	290,059.36	133,099.51
Nassau	7,638,011.81	152,117.07	2,933,454.82	4,552,439.92
Niagara	1,512,023.44	80,625.67	946,747.86	484,649.91
Oneida	1,311,780.52	72,683.46	772,998.63	466,098.43
Onondaga	3,440,728.72	110,990.65	2,034,055.28	1,295,682.79
Ontario	901,267.86	40,416.57	475,270.34	385,580.95
Orange	3,055,827.84	69,753.84	1,213,570.19	1,772,503.81
Orleans	324,070.87	19,764.97	198,742.93	105,562.97
Oswego	1,019,109.50	42,252.33	613,886.83	362,970.34
Otsego	334,448.76	7,718.01	163,714.15	163,016.60
Putnam	622,683.56	5,680.11	198,156.44	418,847.01
Rensselaer	1,421,935.29	68,071.76	609,640.86	744,222.67
Rockland	2,156,413.61	43,965.58	877,817.70	1,234,630.33
St. Lawrence	938,735.56	34,004.68	581,864.79	322,866.09
Saratoga	1,536,318.73	17,984.69	666,671.96	851,662.08
Schenectady	1,200,618.39	49,503.98	507,865.19	643,249.22
Schoharie	264,690.59	9,472.02	149,699.37	105,519.20
Schuyler	155,523.56	5,740.22	112,530.90	37,252.44
Seneca	259,279.98	8,733.43	141,609.87	108,936.68
Steuben	791,389.84	29,819.10	474,577.70	286,993.04
Suffolk	12,239,728.20	278,541.86	5,556,554.30	6,404,632.04
Sullivan	676,329.20	21,695.51	363,177.92	291,455.77
Tioga	408,113.14	20,162.11	237,542.13	150,408.90
Tompkins	565,972.05	21,594.63	303,031.67	241,345.75
Ulster	1,403,318.97	58,984.02	720,965.07	623,369.88
Warren	667,704.67	26,394.23	340,736.82	300,573.62
Washington	570,310.92	18,552.83	303,735.41	248,022.68
Wayne	809,287.06	24,029.23	414,360.69	370,897.14
Westchester	5,863,091.33	140,684.10	2,120,726.78	3,601,680.45
Wyoming	368,352.81	13,536.91	176,354.40	178,461.50
Yates	151,186.20	7,314.25	85,350.77	58,521.18

Table 21  
**AGGREGATE CLAIMS**  
**TOTAL TEMPORARY ASSISTANCE**  
Family Assistance and Safety Net Assistance  
November 2015

Month	New York State			New York City			Rest of State		
	Recipients	Net Expenditures	Monthly Average Payment	Recipients	Net Expenditures	Monthly Average Payment	Recipients	Net Expenditures	Monthly Average Payment
December 2013	566,424	\$289,591,660	\$511.26	339,513	\$215,151,686	\$633.71	226,911	\$74,439,974	\$328.06
January 2014	560,991	\$214,034,507	\$381.53	333,708	\$146,731,005	\$439.70	227,283	\$67,303,502	\$296.12
February 2014	561,525	\$210,098,286	\$374.16	333,162	\$140,749,161	\$422.46	228,363	\$69,349,125	\$303.68
March 2014	566,456	\$228,168,831	\$402.80	334,732	\$155,317,544	\$464.01	231,724	\$72,851,287	\$314.39
April 2014	565,463	\$226,859,192	\$401.19	332,074	\$151,598,291	\$456.52	233,389	\$75,260,901	\$322.47
May 2014	564,612	\$219,689,737	\$389.10	330,872	\$144,710,332	\$437.36	233,740	\$74,979,405	\$320.78
June 2014	563,201	\$223,682,858	\$397.16	331,315	\$151,675,137	\$457.80	231,886	\$72,007,721	\$310.53
July 2014	562,676	\$213,011,582	\$378.57	331,407	\$143,826,733	\$433.99	231,269	\$69,184,849	\$299.15
August 2014	565,719	\$204,522,862	\$361.53	336,383	\$135,173,840	\$401.85	229,336	\$69,349,022	\$302.39
September 2014	567,809	\$227,631,174	\$400.89	339,380	\$158,726,208	\$467.69	228,429	\$68,904,966	\$301.65
October 2014	571,842	\$243,254,336	\$425.39	339,804	\$170,325,629	\$501.25	232,038	\$72,928,707	\$314.30
November 2014	566,688	\$206,226,591	\$363.92	341,498	\$142,024,104	\$415.89	225,190	\$64,202,487	\$285.10
December 2014	573,328	\$295,716,201	\$515.79	344,154	\$219,794,242	\$638.65	229,174	\$75,921,959	\$331.29
January 2015	569,551	\$253,499,500	\$445.09	343,400	\$184,987,118	\$538.69	226,151	\$68,512,382	\$302.95
February 2015	570,637	\$219,308,988	\$384.32	346,155	\$152,246,046	\$439.82	224,482	\$67,062,942	\$298.75
March 2015	577,132	\$236,980,733	\$410.62	349,639	\$162,425,660	\$464.55	227,493	\$74,555,073	\$327.72
April 2015	575,508	\$230,158,671	\$399.92	349,039	\$158,568,220	\$454.30	226,469	\$71,590,451	\$316.12
May 2015	573,167	\$219,539,899	\$383.03	350,112	\$149,863,337	\$428.04	223,055	\$69,676,562	\$312.37
June 2015	573,775	\$221,367,377	\$385.81	351,701	\$152,451,203	\$433.47	222,074	\$68,916,174	\$310.33
July 2015	573,450	\$218,605,612	\$381.21	352,855	\$150,264,804	\$425.85	220,595	\$68,340,808	\$309.80
August 2015	572,799	\$204,722,474	\$357.41	355,100	\$139,941,444	\$394.09	217,699	\$64,781,030	\$297.57
September 2015	573,074	\$212,612,737	\$371.00	357,047	\$147,066,548	\$411.90	216,027	\$65,546,189	\$303.42
October 2015	578,030	\$223,407,569	\$386.50	361,421	\$156,899,051	\$434.12	216,609	\$66,508,518	\$307.04
November 2015	571,591	\$215,877,966	\$377.68	358,322	\$151,749,736	\$423.50	213,269	\$64,128,230	\$300.69

Note: Data pursuant to a New York State Legislative mandate S. 6057-B/A. 9557-B, Chapter 57, L. 2004.

Based on local district claims submitted on claims Schedules A and C. Includes reimbursable expenditures for basic assistance, rent supplements, family shelters, domestic violence shelters, security deposits, transitional services, diversion transportation, diversion payments, and other non-assistance. These claims are net of cancellations and refunds, and include any reconciliations and supplemental claims applied to the month after initial expenditure reporting is done. Thus, these data differ from the expenditure data presented elsewhere in this document, which are derived from original payment issuance activity during the month, net of cancellations and refunds in that month.

District claiming activity for recent months is generally not complete before the statutorily required due date for this report. Thus, claims for recent months may appear substantially below those for earlier months. Claims tables in future months of this report will continue to include the historical periods above, adjusted for claiming activity occurring subsequent to this report.

Table 22  
**AGGREGATE CLAIMS**  
**FEDERALLY PARTICIPATING - TANF**  
**Family Assistance-FP and Safety Net Assistance-FP**  
**November 2015**

Month	New York State			New York City			Rest of State		
	Recipients	Net Expenditures	Monthly Average Payment	Recipients	Net Expenditures	Monthly Average Payment	Recipients	Net Expenditures	Monthly Average Payment
December 2013	260,468	\$133,229,448	\$511.50	141,437	\$95,747,960	\$676.97	119,031	\$37,481,488	\$314.89
January 2014	256,124	\$92,822,352	\$362.41	137,459	\$59,856,956	\$435.45	118,665	\$32,965,396	\$277.80
February 2014	255,541	\$89,422,412	\$349.93	136,833	\$56,115,950	\$410.11	118,708	\$33,306,462	\$280.57
March 2014	255,898	\$100,952,077	\$394.50	136,966	\$65,683,012	\$479.56	118,932	\$35,269,065	\$296.55
April 2014	253,936	\$97,135,029	\$382.52	134,985	\$61,105,554	\$452.68	118,951	\$36,029,475	\$302.89
May 2014	253,505	\$92,440,031	\$364.65	134,113	\$57,980,291	\$432.32	119,392	\$34,459,740	\$288.63
June 2014	253,465	\$101,579,583	\$400.76	134,148	\$67,116,281	\$500.32	119,317	\$34,463,302	\$288.84
July 2014	252,643	\$86,880,628	\$343.89	133,462	\$53,597,492	\$401.59	119,181	\$33,283,136	\$279.27
August 2014	254,875	\$83,867,022	\$329.05	136,240	\$50,504,032	\$370.70	118,635	\$33,362,990	\$281.22
September 2014	254,656	\$99,973,439	\$392.58	136,630	\$66,244,980	\$484.85	118,026	\$33,728,459	\$285.77
October 2014	255,720	\$104,840,640	\$409.98	136,355	\$69,873,173	\$512.44	119,365	\$34,967,467	\$292.95
November 2014	255,842	\$86,424,571	\$337.80	139,293	\$55,125,642	\$395.75	116,549	\$31,298,929	\$268.55
December 2014	254,126	\$113,433,127	\$446.37	137,103	\$77,034,245	\$561.87	117,023	\$36,398,882	\$311.04
January 2015	251,342	\$107,431,110	\$427.43	136,237	\$74,910,192	\$549.85	115,105	\$32,520,918	\$282.53
February 2015	250,234	\$88,902,237	\$355.28	136,216	\$57,298,669	\$420.65	114,018	\$31,603,568	\$277.18
March 2015	251,794	\$101,350,721	\$402.51	137,283	\$66,515,785	\$484.52	114,511	\$34,834,936	\$304.21
April 2015	248,893	\$92,265,661	\$370.70	135,267	\$59,547,538	\$440.22	113,626	\$32,718,123	\$287.95
May 2015	248,133	\$89,716,201	\$361.56	136,046	\$57,289,140	\$421.10	112,087	\$32,427,061	\$289.30
June 2015	247,686	\$95,661,384	\$386.22	135,971	\$63,269,004	\$465.31	111,715	\$32,392,380	\$289.96
July 2015	247,654	\$87,356,550	\$352.74	136,308	\$55,292,868	\$405.65	111,346	\$32,063,682	\$287.96
August 2015	246,643	\$80,175,837	\$325.07	136,286	\$49,399,587	\$362.47	110,357	\$30,776,250	\$278.88
September 2015	247,329	\$85,102,022	\$344.08	137,716	\$53,879,715	\$391.24	109,613	\$31,222,307	\$284.84
October 2015	249,057	\$89,426,673	\$359.06	138,939	\$57,571,781	\$414.37	110,118	\$31,854,892	\$289.28
November 2015	246,296	\$88,287,140	\$358.46	138,047	\$57,710,814	\$418.05	108,249	\$30,576,326	\$282.46

Note: Data pursuant to a New York State Legislative mandate S. 6057-B/A. 9557-B, Chapter 57, L. 2004. Based on local district claims submitted on claims Schedules A and C. Includes reimbursable expenditures for basic assistance, rent supplements, family shelters, domestic violence shelters, security deposits, transitional services, diversion transportation, diversion payments, and other non-assistance. These claims are net of cancellations and refunds, and include any reconciliations and supplemental claims applied to the month after initial expenditure reporting is done. Thus, these data differ from the expenditure data presented elsewhere in this document, which are derived from original payment issuance activity during the month, net of cancellations and refunds in that month. District claiming activity for recent months is generally not complete before the statutorily required due date for this report. Thus, claims for recent months may appear substantially below those for earlier months. Claims tables in future months of this report will continue to include the historical periods above, adjusted for claiming activity occurring subsequent to this report.



Table 23  
**AGGREGATE CLAIMS**  
**FEDERALLY NON-PARTICIPATING**  
**Safety Net Assistance-FNP Maintenance of Effort**  
**November 2015**

Month	New York State			New York City			Rest of State		
	Recipients	Net Expenditures	Monthly Average Payment	Recipients	Net Expenditures	Monthly Average Payment	Recipients	Net Expenditures	Monthly Average Payment
December 2013	117,452	\$51,656,607	\$439.81	78,754	\$42,298,783	\$537.10	38,698	\$9,357,824	\$241.82
January 2014	116,278	\$34,146,338	\$293.66	77,255	\$25,344,805	\$328.07	39,023	\$8,801,533	\$225.55
February 2014	116,505	\$31,249,687	\$268.23	77,327	\$22,124,863	\$286.12	39,178	\$9,124,824	\$232.91
March 2014	117,670	\$41,094,156	\$349.23	78,426	\$31,555,885	\$402.37	39,244	\$9,538,271	\$243.05
April 2014	114,869	\$35,803,039	\$311.69	75,862	\$25,646,627	\$338.07	39,007	\$10,156,412	\$260.37
May 2014	114,478	\$33,507,779	\$292.70	75,265	\$24,181,272	\$321.28	39,213	\$9,326,507	\$237.84
June 2014	114,786	\$38,909,832	\$338.98	75,107	\$29,713,919	\$395.62	39,679	\$9,195,913	\$231.76
July 2014	114,537	\$32,490,337	\$283.67	74,604	\$23,371,909	\$313.28	39,933	\$9,118,428	\$228.34
August 2014	116,548	\$29,347,170	\$251.80	77,266	\$20,625,986	\$266.95	39,282	\$8,721,184	\$222.01
September 2014	117,457	\$39,794,520	\$338.80	77,600	\$30,949,827	\$398.84	39,857	\$8,844,693	\$221.91
October 2014	117,954	\$36,920,579	\$313.01	77,641	\$27,254,967	\$351.04	40,313	\$9,665,612	\$239.76
November 2014	116,448	\$31,064,132	\$266.76	76,629	\$22,565,979	\$294.48	39,819	\$8,498,153	\$213.42
December 2014	121,796	\$57,862,779	\$475.08	80,895	\$48,437,391	\$598.77	40,901	\$9,425,388	\$230.44
January 2015	120,097	\$43,742,063	\$364.22	79,585	\$34,571,287	\$434.39	40,512	\$9,170,776	\$226.37
February 2015	122,369	\$34,736,336	\$283.87	82,108	\$25,627,840	\$312.12	40,261	\$9,108,496	\$226.24
March 2015	121,592	\$42,725,935	\$351.39	81,214	\$32,916,088	\$405.30	40,378	\$9,809,847	\$242.95
April 2015	121,779	\$36,466,493	\$299.45	81,603	\$26,620,651	\$326.22	40,176	\$9,845,842	\$245.07
May 2015	122,015	\$33,591,105	\$275.30	82,123	\$24,140,499	\$293.96	39,892	\$9,450,606	\$236.90
June 2015	122,737	\$40,053,265	\$326.33	82,813	\$31,055,912	\$375.01	39,924	\$8,997,353	\$225.36
July 2015	122,406	\$34,354,172	\$280.66	82,218	\$25,254,747	\$307.17	40,188	\$9,099,425	\$226.42
August 2015	125,311	\$30,740,111	\$245.31	85,637	\$21,965,870	\$256.50	39,674	\$8,774,241	\$221.16
September 2015	124,711	\$37,841,895	\$303.44	85,244	\$28,831,262	\$338.22	39,467	\$9,010,633	\$228.31
October 2015	125,581	\$33,970,289	\$270.51	86,021	\$24,620,067	\$286.21	39,560	\$9,350,222	\$236.36
November 2015	125,942	\$33,163,991	\$263.33	86,629	\$24,338,329	\$280.95	39,313	\$8,825,662	\$224.50

Note: Data pursuant to a New York State Legislative mandate S. 6057-B/A. 9557-B, Chapter 57, L. 2004.

Based on local district claims submitted on claims Schedules A and C. Includes reimbursable expenditures for basic assistance, rent supplements, family shelters, domestic violence shelters, security deposits, transitional services, diversion transportation, diversion payments, and other non-assistance. These claims are net of cancellations and refunds, and include any reconciliations and supplemental claims applied to the month after initial expenditure reporting is done. Thus, these data differ from the expenditure data presented elsewhere in this document, which are derived from original payment issuance activity during the month, net of cancellations and refunds in that month.

District claiming activity for recent months is generally not complete before the statutorily required due date for this report. Thus, claims for recent months may appear substantially below those for earlier months. Claims tables in future months of this report will continue to include the historical periods above, adjusted for claiming activity occurring subsequent to this report.

Table 24  
**AGGREGATE CLAIMS**  
**FEDERALLY NON-PARTICIPATING**  
Safety Net Assistance-FNP and Family Assistance-FNP Non-Maintenance of Effort  
November 2015

Month	New York State			New York City			Rest of State		
	Recipients	Net Expenditures	Monthly Average Payment	Recipients	Net Expenditures	Monthly Average Payment	Recipients	Net Expenditures	Monthly Average Payment
December 2013	188,504	\$104,705,605	\$555.46	119,322	\$77,104,943	\$646.19	69,182	\$27,600,662	\$398.96
January 2014	188,589	\$87,065,817	\$461.67	118,994	\$61,529,244	\$517.08	69,595	\$25,536,573	\$366.93
February 2014	189,479	\$89,426,187	\$471.96	119,002	\$62,508,348	\$525.27	70,477	\$26,917,839	\$381.94
March 2014	192,888	\$86,122,598	\$446.49	119,340	\$58,078,647	\$486.67	73,548	\$28,043,951	\$381.30
April 2014	196,658	\$93,921,124	\$477.59	121,227	\$64,846,110	\$534.91	75,431	\$29,075,014	\$385.45
May 2014	196,629	\$93,741,927	\$476.75	121,494	\$62,548,769	\$514.83	75,135	\$31,193,158	\$415.16
June 2014	194,950	\$83,193,443	\$426.74	122,060	\$54,844,937	\$449.33	72,890	\$28,348,506	\$388.92
July 2014	195,496	\$93,640,617	\$478.99	123,341	\$66,857,332	\$542.05	72,155	\$26,783,285	\$371.19
August 2014	194,296	\$91,308,670	\$469.95	122,877	\$64,043,822	\$521.20	71,419	\$27,264,848	\$381.76
September 2014	195,696	\$87,863,215	\$448.98	125,150	\$61,531,401	\$491.66	70,546	\$26,331,814	\$373.26
October 2014	198,168	\$101,493,117	\$512.16	125,808	\$73,197,489	\$581.82	72,360	\$28,295,628	\$391.04
November 2014	194,398	\$88,737,888	\$456.48	125,576	\$64,332,483	\$512.30	68,822	\$24,405,405	\$354.62
December 2014	197,406	\$124,420,295	\$630.28	126,156	\$94,322,606	\$747.67	71,250	\$30,097,689	\$422.42
January 2015	198,112	\$102,326,327	\$516.51	127,578	\$75,505,639	\$591.84	70,534	\$26,820,688	\$380.25
February 2015	198,034	\$95,670,415	\$483.10	127,831	\$69,319,537	\$542.27	70,203	\$26,350,878	\$375.35
March 2015	203,746	\$92,904,077	\$455.98	131,142	\$62,993,787	\$480.35	72,604	\$29,910,290	\$411.96
April 2015	204,836	\$101,426,517	\$495.16	132,169	\$72,400,031	\$547.78	72,667	\$29,026,486	\$399.45
May 2015	203,019	\$96,232,593	\$474.01	131,943	\$68,433,698	\$518.66	71,076	\$27,798,895	\$391.12
June 2015	203,352	\$85,652,728	\$421.20	132,917	\$58,126,287	\$437.31	70,435	\$27,526,441	\$390.81
July 2015	203,390	\$96,894,890	\$476.40	134,329	\$69,717,189	\$519.00	69,061	\$27,177,701	\$393.53
August 2015	200,845	\$93,806,526	\$467.06	133,177	\$68,575,987	\$514.92	67,668	\$25,230,539	\$372.86
September 2015	201,034	\$89,668,820	\$446.04	134,087	\$64,355,571	\$479.95	66,947	\$25,313,249	\$378.11
October 2015	203,392	\$100,010,607	\$491.71	136,461	\$74,707,203	\$547.46	66,931	\$25,303,404	\$378.05
November 2015	199,353	\$94,426,835	\$473.67	133,646	\$69,700,593	\$521.53	65,707	\$24,726,242	\$376.31

Note: Data pursuant to a New York State Legislative mandate S. 6057-B/A. 9557-B, Chapter 57, L. 2004.

Based on local district claims submitted on claims Schedules A and C. Includes reimbursable expenditures for basic assistance, rent supplements, family shelters, domestic violence shelters, security deposits, transitional services, diversion transportation, diversion payments, and other non-assistance. These claims are net of cancellations and refunds, and include any reconciliations and supplemental claims applied to the month after initial expenditure reporting is done. Thus, these data differ from the expenditure data presented elsewhere in this document, which are derived from original payment issuance activity during the month, net of cancellations and refunds in that month.

District claiming activity for recent months is generally not complete before the statutorily required due date for this report. Thus, claims for recent months may appear substantially below those for earlier months. Claims tables in future months of this report will continue to include the historical periods above, adjusted for claiming activity occurring subsequent to this report.

Table 25  
HOME ENERGY ASSISTANCE PROGRAM\*  
Number and Dollar Amount of Benefits Authorized and Administrative Allocations - Federal Fiscal Year to Date  
November 2015

Local District	Benefits Authorized		Administrative Allocations
	Number	Dollar Amount	
New York State	528,939	\$142,669,497	\$18,062,458
New York City	0	0	3,856,659
Rest of State	528,939	142,669,497	14,205,799
Albany	15,921	3,351,999	250,974
Allegany	3,036	1,223,509	137,588
Broome	13,371	3,791,604	358,933
Cattaraugus	6,337	2,263,429	228,985
Cayuga	4,443	1,543,663	160,390
Chautauqua	11,271	3,693,996	339,091
Chemung	6,542	1,591,715	161,127
Chenango	3,505	1,515,380	160,963
Clinton	5,873	2,702,612	284,412
Columbia	3,345	1,111,885	108,980
Cortland	3,059	951,599	102,844
Delaware	3,329	1,438,945	146,412
Dutchess	10,587	2,359,503	236,691
Erie	70,140	19,345,248	2,452,379
Essex	1,927	837,773	85,157
Franklin	4,013	1,680,619	197,927
Fulton	4,331	1,645,417	181,736
Genesee	2,786	843,150	79,504
Greene	3,038	1,183,767	134,093
Hamilton	251	102,262	11,271
Herkimer	4,965	1,764,447	189,867
Jefferson	7,016	2,333,689	221,034
Lewis	1,701	814,540	87,498
Livingston	3,125	1,137,942	108,637
Madison	3,547	1,271,304	149,260
Monroe	51,169	11,091,621	765,529
Montgomery	4,147	1,439,790	147,912
Nassau	20,840	3,073,099	196,084
Niagara	14,890	3,983,415	397,195
Oneida	16,983	5,140,505	582,647
Onondaga	28,998	6,987,265	556,319
Ontario	4,793	1,357,591	130,458
Orange	13,292	3,211,357	349,006
Orleans	2,440	980,226	97,764
Oswego	7,094	2,790,808	228,635
Otsego	3,096	1,299,691	152,672
Putnam	1,395	365,970	36,006
Rensselaer	7,489	2,074,309	194,429
Rockland	11,834	2,093,224	169,503
St. Lawrence	7,444	2,976,573	362,124
Saratoga	6,879	2,488,658	274,108
Schenectady	9,268	2,315,207	167,500
Schoharie	1,936	890,496	95,033
Schuyler	1,217	551,648	60,309
Seneca	1,691	525,929	62,954
Steuben	5,742	2,079,957	261,532
Suffolk	37,034	9,705,281	803,627
Sullivan	5,360	1,750,109	189,980
Tioga	2,884	1,301,629	128,346
Tompkins	4,314	1,035,723	105,197
Ulster	10,844	3,269,365	374,540
Warren	3,714	1,334,413	138,382
Washington	3,333	1,418,700	142,029
Wayne	4,733	1,679,104	124,891
Westchester	33,642	1,862,702	221,201
Wyoming	1,746	650,209	61,247
Yates	1,239	444,926	52,887

\* Please Note: The 2016 Home Energy Assistance Program Federal Fiscal Year is October 1, 2015 through September 30, 2016.

Table 26  
**HOME ENERGY ASSISTANCE PROGRAM - NON-EMERGENCY\***  
 Number, Total Dollar Amount and Average Dollar Amount of Benefits Authorized - Federal Fiscal Year to Date  
 November 2015

Local District	Autopay			Regular Non-Autopay		
	Benefits Authorized	Dollar Amount Authorized	Average Dollar Amount	Benefits Authorized	Dollar Amount Authorized	Average Dollar Amount
New York State	464,852	\$112,403,982	\$242	64,008	\$30,140,222	\$471
New York City	0	0	0	0	0	0
Rest of State	464,852	112,403,982	242	64,008	30,140,222	471
Albany	15,052	2,982,829	198	868	364,491	420
Allegany	2,237	851,840	381	799	371,669	465
Broome	11,491	2,933,286	255	1,873	851,413	455
Cattaraugus	5,038	1,655,615	329	1,296	601,881	464
Cayuga	3,727	1,196,242	321	712	343,561	483
Chautauqua	9,529	2,952,651	310	1,736	734,231	423
Chemung	5,774	1,259,473	218	764	319,942	419
Chenango	2,488	949,732	382	1,017	565,648	556
Clinton	4,740	2,053,718	433	1,131	648,014	573
Columbia	2,880	864,449	300	465	247,436	532
Cortland	2,542	708,458	279	517	243,141	470
Delaware	2,415	922,381	382	911	513,635	564
Dutchess	9,949	2,000,531	201	638	358,972	563
Erie	60,275	15,551,698	258	9,859	3,777,416	383
Essex	1,308	476,446	364	619	361,327	584
Franklin	3,083	1,138,599	369	927	540,980	584
Fulton	3,393	1,159,158	342	938	486,259	518
Genesee	2,339	637,713	273	447	205,437	460
Greene	2,353	805,283	342	685	378,484	553
Hamilton	175	57,891	331	76	44,371	584
Herkimer	3,913	1,246,517	319	1,052	517,930	492
Jefferson	6,289	1,968,196	313	726	362,968	500
Lewis	1,291	583,513	452	409	230,834	564
Livingston	2,648	910,442	344	477	227,500	477
Madison	2,871	927,244	323	675	343,695	509
Monroe	48,653	10,131,761	208	2,516	959,860	382
Montgomery	3,351	1,046,182	312	795	393,522	495
Nassau	19,082	2,198,696	115	1,758	874,403	497
Niagara	12,906	3,160,848	245	1,978	814,602	412
Oneida	14,600	4,043,468	277	2,381	1,092,487	459
Onondaga	26,259	5,895,075	224	2,729	1,073,246	393
Ontario	4,065	1,029,456	253	727	321,786	443
Orange	12,007	2,594,346	216	1,285	617,011	480
Orleans	1,903	724,753	381	535	248,517	465
Oswego	6,228	2,334,811	375	866	455,997	527
Otsego	2,362	887,082	376	734	412,609	562
Putnam	1,149	238,730	208	246	127,240	517
Rensselaer	6,415	1,558,990	243	1,074	515,319	480
Rockland	11,507	1,971,707	171	327	121,517	372
St. Lawrence	5,741	2,046,852	357	1,692	925,923	547
Saratoga	6,000	2,053,538	342	879	435,120	495
Schenectady	8,727	2,090,694	240	541	224,513	415
Schoharie	1,434	606,556	423	502	283,940	566
Schuyler	898	377,030	420	318	174,125	548
Seneca	1,409	383,048	272	282	142,881	507
Steuben	4,297	1,410,520	328	1,445	669,437	463
Suffolk	33,606	7,921,019	236	3,426	1,776,517	519
Sullivan	4,280	1,128,393	264	1,080	621,716	576
Tioga	2,184	935,752	428	700	365,877	523
Tompkins	3,837	809,255	211	477	226,468	475
Ulster	9,326	2,413,844	259	1,518	855,521	564
Warren	2,973	943,194	317	740	387,669	524
Washington	2,582	1,008,049	390	751	410,651	547
Wayne	3,997	1,328,646	332	736	350,458	476
Westchester	32,957	1,556,154	47	685	306,548	448
Wyoming	1,276	438,731	344	470	211,478	450
Yates	1,041	342,897	329	198	102,029	515

\* Please Note: The 2016 Home Energy Assistance Program Federal Fiscal Year is October 1, 2015 through September 30, 2016.

Table 27  
**HOME ENERGY ASSISTANCE PROGRAM - EMERGENCY\***  
 Number, Total Dollar Amount and Average Dollar Amount of Benefits Authorized - Federal Fiscal Year to Date  
 November 2015

Local District	Emergency			Furnace Replacement			Furnace Repair & Repair/Replacement Estimates		
	Benefits Authorized	Dollar Amount Authorized	Average Dollar Amount	Benefits Authorized	Dollar Amount Authorized	Average Dollar Amount	Benefits Authorized	Dollar Amount Authorized	Average Dollar Amount
New York State	0	\$0	\$0	36	\$111,571	\$3,099	43	\$13,722	\$319
New York City	0	0	0	0	0	0	0	0	0
Rest of State	0	0	0	36	111,571	3,099	43	13,722	319
Albany	0	0	0	1	4,679	4,679	0	0	0
Allegany	0	0	0	0	0	0	0	0	0
Broome	0	0	0	2	6,295	3,148	5	610	122
Cattaraugus	0	0	0	2	5,734	2,867	1	199	199
Cayuga	0	0	0	1	3,090	3,090	3	770	257
Chautauqua	0	0	0	2	6,229	3,115	4	885	221
Chemung	0	0	0	3	9,500	3,167	1	2,800	2,800
Chenango	0	0	0	0	0	0	0	0	0
Clinton	0	0	0	0	0	0	2	880	440
Columbia	0	0	0	0	0	0	0	0	0
Cortland	0	0	0	0	0	0	0	0	0
Delaware	0	0	0	1	2,449	2,449	2	480	240
Dutchess	0	0	0	0	0	0	0	0	0
Erie	0	0	0	5	15,486	3,097	1	648	648
Essex	0	0	0	0	0	0	0	0	0
Franklin	0	0	0	0	0	0	3	1,040	347
Fulton	0	0	0	0	0	0	0	0	0
Genesee	0	0	0	0	0	0	0	0	0
Greene	0	0	0	0	0	0	0	0	0
Hamilton	0	0	0	0	0	0	0	0	0
Herkimer	0	0	0	0	0	0	0	0	0
Jefferson	0	0	0	1	2,525	2,525	0	0	0
Lewis	0	0	0	0	0	0	1	193	193
Livingston	0	0	0	0	0	0	0	0	0
Madison	0	0	0	0	0	0	1	365	365
Monroe	0	0	0	0	0	0	0	0	0
Montgomery	0	0	0	0	0	0	1	86	86
Nassau	0	0	0	0	0	0	0	0	0
Niagara	0	0	0	3	7,322	2,441	3	643	214
Oneida	0	0	0	2	4,550	2,275	0	0	0
Onondaga	0	0	0	6	17,498	2,916	4	1,446	362
Ontario	0	0	0	1	6,349	6,349	0	0	0
Orange	0	0	0	0	0	0	0	0	0
Orleans	0	0	0	2	6,956	3,478	0	0	0
Oswego	0	0	0	0	0	0	0	0	0
Otsego	0	0	0	0	0	0	0	0	0
Putnam	0	0	0	0	0	0	0	0	0
Rensselaer	0	0	0	0	0	0	0	0	0
Rockland	0	0	0	0	0	0	0	0	0
St. Lawrence	0	0	0	1	1,614	1,614	10	2,184	218
Saratoga	0	0	0	0	0	0	0	0	0
Schenectady	0	0	0	0	0	0	0	0	0
Schoharie	0	0	0	0	0	0	0	0	0
Schuyler	0	0	0	0	0	0	1	493	493
Seneca	0	0	0	0	0	0	0	0	0
Steuben	0	0	0	0	0	0	0	0	0
Suffolk	0	0	0	2	7,745	3,873	0	0	0
Sullivan	0	0	0	0	0	0	0	0	0
Tioga	0	0	0	0	0	0	0	0	0
Tompkins	0	0	0	0	0	0	0	0	0
Ulster	0	0	0	0	0	0	0	0	0
Warren	0	0	0	1	3,550	3,550	0	0	0
Washington	0	0	0	0	0	0	0	0	0
Wayne	0	0	0	0	0	0	0	0	0
Westchester	0	0	0	0	0	0	0	0	0
Wyoming	0	0	0	0	0	0	0	0	0
Yates	0	0	0	0	0	0	0	0	0

\* Please Note: The 2016 Home Energy Assistance Program Federal Fiscal Year is October 1, 2015 through September 30, 2016.

Table 28  
**FEDERAL ALL FAMILIES WORK PARTICIPATION RATES**  
TANF, Safety Net Assistance MOE and Combined TANF and Safety Net Assistance MOE  
November 2015

Local District	Combined TANF and Safety Net Assistance MOE			TANF			Safety Net Assistance MOE		
	Rate	Numerator	Denominator	Rate	Numerator	Denominator	Rate	Numerator	Denominator
New York State*	33.8%	30,375	89,880	33.2%	18,159	54,687	34.7%	12,215	35,193
New York City*	35.5%	20,576	58,032	34.8%	11,433	32,825	36.4%	9,142	25,207
Rest of State	23.6%	7,418	31,443	22.2%	4,749	21,416	26.6%	2,669	10,027
Albany	20.0%	193	966	19.0%	122	642	21.9%	71	324
Allegany	17.5%	21	120	17.9%	15	84	16.7%	6	36
Broome	16.4%	160	975	15.6%	105	674	18.3%	55	301
Cattaraugus	30.8%	37	120	30.7%	31	101	31.6%	6	19
Cayuga	11.5%	30	262	9.9%	21	212	18.0%	9	50
Chautauqua	19.1%	157	822	18.2%	90	494	20.4%	67	328
Chemung	12.6%	16	127	13.0%	13	100	11.1%	3	27
Chenango	18.3%	17	93	16.5%	14	85	37.5%	3	8
Clinton	9.9%	13	131	9.4%	9	96	11.4%	4	35
Columbia	13.0%	18	138	12.3%	13	106	15.6%	5	32
Cortland	17.1%	26	152	18.5%	24	130	9.1%	2	22
Delaware	22.7%	10	44	22.7%	10	44	N/A	0	0
Dutchess	17.9%	42	234	14.7%	23	156	24.4%	19	78
Erie	38.1%	1,852	4,865	35.7%	1,195	3,345	43.2%	657	1,520
Essex	21.4%	3	14	21.4%	3	14	N/A	0	0
Franklin	13.5%	17	126	13.3%	13	98	14.3%	4	28
Fulton	26.0%	13	50	24.5%	12	49	100.0%	1	1
Genesee	23.5%	16	68	21.8%	12	55	30.8%	4	13
Greene	35.7%	35	98	35.8%	24	67	35.5%	11	31
Hamilton	0.0%	0	2	0.0%	0	2	N/A	0	0
Herkimer	18.1%	23	127	22.2%	22	99	3.6%	1	28
Jefferson	12.9%	30	233	13.4%	26	194	10.3%	4	39
Lewis	10.5%	2	19	11.1%	2	18	0.0%	0	1
Livingston	9.1%	20	219	8.3%	15	181	13.2%	5	38
Madison	20.6%	20	97	18.9%	14	74	26.1%	6	23
Monroe	18.7%	986	5,276	17.0%	571	3,363	21.7%	415	1,913
Montgomery	21.2%	39	184	23.3%	35	150	11.8%	4	34
Nassau	28.2%	528	1,870	27.4%	307	1,120	29.5%	221	750
Niagara	15.3%	135	884	13.6%	83	609	18.9%	52	275
Oneida	21.9%	318	1,454	20.9%	215	1,029	24.2%	103	425
Onondaga	13.5%	302	2,236	11.6%	185	1,600	18.4%	117	636
Ontario	14.4%	28	194	13.8%	22	159	17.1%	6	35
Orange	26.7%	227	849	23.8%	125	526	31.6%	102	323
Orleans	15.5%	24	155	15.4%	18	117	15.8%	6	38
Oswego	9.6%	50	522	10.2%	43	423	7.1%	7	99
Otsego	10.5%	2	19	10.5%	2	19	N/A	0	0
Putnam	42.9%	6	14	41.7%	5	12	50.0%	1	2
Rensselaer	24.5%	184	751	25.0%	134	536	23.3%	50	215
Rockland	37.3%	82	220	39.9%	59	148	31.9%	23	72
St. Lawrence	20.5%	67	327	19.4%	50	258	24.6%	17	69
Saratoga	6.7%	2	30	6.7%	2	30	N/A	0	0
Schenectady	25.5%	147	576	25.1%	95	378	26.3%	52	198
Schoharie	23.7%	9	38	22.2%	8	36	50.0%	1	2
Schuyler	13.1%	8	61	12.2%	6	49	16.7%	2	12
Seneca	20.3%	16	79	22.0%	13	59	15.0%	3	20
Steuben	21.9%	47	215	22.7%	35	154	19.7%	12	61
Suffolk	34.1%	747	2,191	32.1%	476	1,483	38.3%	271	708
Sullivan	26.3%	40	152	28.1%	32	114	21.1%	8	38
Tioga	21.7%	15	69	20.6%	13	63	33.3%	2	6
Tompkins	15.5%	28	181	13.6%	18	132	20.4%	10	49
Ulster	13.9%	71	510	14.8%	54	364	11.6%	17	146
Warren	25.0%	8	32	25.8%	8	31	0.0%	0	1
Washington	16.4%	9	55	18.0%	9	50	0.0%	0	5
Wayne	15.6%	23	147	16.3%	21	129	11.1%	2	18
Westchester	24.6%	488	1,984	24.4%	267	1,095	24.9%	221	889
Wyoming	20.9%	9	43	21.1%	8	38	20.0%	1	5
Yates	8.7%	2	23	9.1%	2	22	0.0%	0	1

\* Statewide and New York City participation rates are estimated from federal disaggregated reporting samples, which are the source of the rates used by the United States Department of Health and Human Services to determine if a state has met participation goals. Because the sample size is insufficient to permit rate estimates for non-New York City districts, rates for those districts are derived directly from automated systems data. Thus, Rest of State and New York City numerators and denominators will not sum to the statewide total. Estimates are from fourth quarter Federal Fiscal Year 2015 samples.

Table 29  
**WORK SANCTION STATUS BY PRESENCE IN FEDERAL ALL FAMILIES WORK PARTICIPATION CALCULATION**  
**TANF, Safety Net Assistance MOE and Combined TANF and Safety Net Assistance MOE**  
**November 2015**

Local District	Combined TANF and Safety Net Assistance MOE		TANF		Safety Net Assistance MOE	
	Sanctioned in the Denominator	Sanctioned Removed From Denominator	Sanctioned in the Denominator	Sanctioned Removed From Denominator	Sanctioned in the Denominator	Sanctioned Removed From Denominator
New York State*	4,156	4,204	1,386	2,680	2,770	1,524
New York City*	2,043	2,497	739	1,340	1,304	1,157
Rest of State	2,523	1,195	1,190	791	1,333	404
Albany	60	25	24	21	36	4
Allegany	3	9	0	8	3	1
Broome	125	46	57	29	68	17
Cattaraugus	10	8	8	7	2	1
Cayuga	22	11	16	9	6	2
Chautauqua	67	36	35	23	32	13
Chemung	16	7	8	6	8	1
Chenango	5	6	4	4	1	2
Clinton	6	6	1	4	5	2
Columbia	19	5	11	3	8	2
Cortland	2	3	1	3	1	0
Delaware	2	0	2	0	0	0
Dutchess	13	6	7	3	6	3
Erie	243	153	115	100	128	53
Essex	1	2	1	2	0	0
Franklin	7	4	4	3	3	1
Fulton	1	3	1	3	0	0
Genesee	5	3	2	2	3	1
Greene	4	8	3	3	1	5
Hamilton	0	0	0	0	0	0
Herkimer	5	4	4	4	1	0
Jefferson	30	13	22	12	8	1
Lewis	1	0	1	0	0	0
Livingston	2	6	2	3	0	3
Madison	4	1	3	1	1	0
Monroe	504	245	202	149	302	96
Montgomery	15	5	10	3	5	2
Nassau	170	89	90	52	80	37
Niagara	146	25	64	19	82	6
Oneida	120	45	54	32	66	13
Onondaga	244	60	97	43	147	17
Ontario	3	6	2	6	1	0
Orange	59	24	29	12	30	12
Orleans	15	7	10	5	5	2
Oswego	31	16	21	11	10	5
Otsego	2	0	2	0	0	0
Putnam	1	0	1	0	0	0
Rensselaer	53	48	30	32	23	16
Rockland	12	11	7	8	5	3
St. Lawrence	36	26	19	19	17	7
Saratoga	0	0	0	0	0	0
Schenectady	147	36	78	21	69	15
Schoharie	2	0	2	0	0	0
Schuyler	4	3	3	3	1	0
Seneca	6	1	1	1	5	0
Steuben	5	2	2	2	3	0
Suffolk	101	82	48	56	53	26
Sullivan	19	7	12	3	7	4
Tioga	1	0	0	0	1	0
Tompkins	25	7	10	7	15	0
Ulster	52	21	28	14	24	7
Warren	2	1	2	1	0	0
Washington	2	2	2	2	0	0
Wayne	6	4	2	4	4	0
Westchester	86	57	29	33	57	24
Wyoming	1	0	1	0	0	0
Yates	0	0	0	0	0	0

\* Statewide and New York City sanction rates are estimated from federal disaggregated reporting samples, which are the source of such data used by the United States Department of Health and Human Services to determine if a state has met participation goals. Because the sample size is insufficient to permit sanction estimates for non-New York City districts, data for those districts are derived directly from automated systems. Thus, Rest of State and New York City counts may not sum to the statewide total. This table uses a federal definition of sanction and includes only persons who are deemed a work eligible individual and are sanctioned for non-compliance for work or substance abuse requirements. Estimates are from fourth quarter Federal Fiscal Year 2015 samples.

Table 30  
 TEMPORARY ASSISTANCE CASES WITH EARNED INCOME  
 Cases, Average Gross Earned Income and Average Net Earned Income after Application of Disregards  
 November 2015

Local District	TANF			Safety Net Assistance MOE			Safety Net Assistance Non-MOE		
	Cases	Average Gross Earned Income	Average Net Earned Income	Cases	Average Gross Earned Income	Average Net Earned Income	Cases	Average Gross Earned Income	Average Net Earned Income
New York State	15,310	\$1,004	\$470	11,753	\$1,021	\$468	9,757	\$1,284	\$791
New York City	10,191	1,064	504	8,743	1,039	477	7,318	1,382	892
Rest of State	5,119	885	401	3,010	968	443	2,439	990	489
Albany	131	938	427	98	1,008	459	75	1,322	623
Allegany	16	740	326	11	711	316	9	293	116
Broome	119	881	395	74	903	407	61	818	390
Cattaraugus	23	799	354	4	1,223	566	4	491	252
Cayuga	28	635	273	15	756	345	10	666	330
Chautauqua	105	892	401	78	867	393	69	780	368
Chemung	23	793	350	6	861	380	5	506	219
Chenango	12	509	227	2	952	431	11	416	214
Clinton	16	1,035	494	4	913	412	10	904	591
Columbia	15	762	336	9	909	432	9	923	512
Cortland	25	865	388	6	738	324	21	736	377
Delaware	9	824	367	0	0	0	6	132	29
Dutchess	30	968	444	22	1,106	506	7	648	374
Erie	663	868	387	458	984	447	486	1,197	564
Essex	2	916	413	0	0	0	3	161	38
Franklin	18	714	312	9	622	266	19	544	252
Fulton	9	780	344	1	948	429	1	65	0
Genesee	12	762	336	2	1,188	549	3	1,001	552
Greene	23	977	443	12	1,037	474	7	471	220
Hamilton	0	0	0	0	0	0	1	252	162
Herkimer	18	664	287	4	552	241	7	580	265
Jefferson	34	667	289	6	796	353	28	712	358
Lewis	2	624	267	0	0	0	1	481	391
Livingston	21	718	314	13	908	409	20	841	388
Madison	11	980	445	4	1,087	499	2	723	517
Monroe	673	863	392	585	937	428	236	855	416
Montgomery	50	836	373	9	930	432	11	867	438
Nassau	450	955	439	233	1,009	460	138	808	458
Niagara	114	707	309	83	900	409	45	766	361
Oneida	224	843	376	148	888	399	210	1,256	587
Onondaga	343	836	373	205	1,008	463	216	1,193	567
Ontario	38	774	342	7	1,014	462	3	461	202
Orange	172	955	432	138	999	457	48	940	451
Orleans	15	842	376	12	547	234	12	642	314
Oswego	67	805	359	17	881	396	37	816	382
Otsego	2	643	277	0	0	0	9	344	264
Putnam	7	1,002	503	0	0	0	4	441	355
Rensselaer	161	798	354	68	911	416	63	1,134	558
Rockland	146	933	416	27	1,030	472	60	1,109	541
St. Lawrence	54	721	316	26	755	368	49	533	240
Saratoga	2	441	175	0	0	0	3	171	82
Schenectady	115	942	426	69	1,067	492	34	963	494
Schoharie	12	853	382	1	815	362	5	873	580
Schuyler	15	806	358	4	713	311	9	541	236
Seneca	17	754	330	10	1,012	461	5	262	126
Steuben	32	892	401	15	906	404	16	549	279
Suffolk	439	1,041	489	271	1,120	520	191	1,001	572
Sullivan	37	654	283	11	1,127	534	7	735	335
Tioga	13	920	415	3	891	400	0	0	0
Tompkins	23	815	324	16	789	350	14	755	380
Ulster	104	913	420	33	801	409	51	779	383
Warren	11	892	397	0	0	0	1	523	216
Washington	8	1,106	508	3	877	394	2	1,120	795
Wayne	17	862	386	1	108	18	11	702	430
Westchester	385	936	432	176	975	448	69	1,001	572
Wyoming	4	661	285	1	1,798	854	1	69	0
Yates	4	676	293	0	0	0	4	751	331