



**Office of Temporary
and Disability Assistance**

Temporary and Disability Assistance Statistics

December 2015



Temporary and Disability Assistance Statistics

DECEMBER 2015

Temporary Assistance

Temporary Assistance recipients totaled 574,037 in December 2015, increasing by 2,446 (+0.4%) from the previous month. Related expenditures totaled \$190,630,033 in December 2015, increasing by approximately \$10.2 million (+5.7%) over November 2015.

Supplemental Nutrition Assistance Program

Supplemental Nutrition Assistance Program recipients totaled 2,990,471 in December 2015, increasing by 8,073 (+0.3%) from the previous month. Related expenditures totaled \$415,860,810 in December 2015, decreasing by approximately \$2.6 million (-0.6%) over November 2015.

Supplemental Security Income

Supplemental Security Income recipients (including Mental Hygiene) totaled 705,747 in December 2015, decreasing by 4,329 (-0.6%) from the previous month. Related expenditures totaled \$414,989,679 in December 2015, decreasing by approximately \$8.8 million (-2.1%) over November 2015.

The Calendar Year 2015 Annual Summary begins on page 32 of this issue.

Date Revised March 11, 2016

Table of Contents

Ten Year Trend Graphs

Temporary Assistance Recipients	4
Supplemental Nutrition Assistance Program Recipients	4
Supplemental Security Income Recipients	4

Temporary Assistance, SSI and SNAP Summary

Table 1:	Temporary Assistance, Family Assistance-FP, Safety Net Assistance, Supplemental Security Income and Supplemental Nutrition Assistance Program Cases by Region	5
Table 2:	Temporary Assistance, Family Assistance-FP, Safety Net Assistance, Supplemental Security Income and Supplemental Nutrition Assistance Program Recipients by Region	5
Table 3:	Temporary Assistance, Family Assistance-FP, Safety Net Assistance, Supplemental Security Income and Supplemental Nutrition Assistance Program Expenditures by Region	5

Temporary Assistance by Program Area

Table 4:	Temporary Assistance Year to Year Monthly Comparison Cases, Recipients and Expenditures	6
Table 5:	Temporary Assistance Cases, Recipients, Children, Adults and Expenditures	7
Table 6:	Family Assistance-FP Cases, Recipients, Children, Adults and Expenditures	8
Table 7:	Safety Net Assistance Cases, Recipients, Children, Adults and Expenditures	9

Temporary Assistance by Funding Source and Program Area

Table 8:	Temporary Assistance by Funding Source (Federally Participating and Federally Non-Participating) Cases, Recipients and Expenditures	10
Table 9:	Temporary Assistance for Needy Families-FP by Program (Family Assistance-FP and Safety Net Assistance-FP) Cases, Recipients, Children, Adults and Expenditures	11
Table 10:	Safety Net Assistance-FNP and Family Assistance-FNP Cases, Recipients, Children, Adults and Expenditures	12
Table 11:	Safety Net Assistance-FNP by Maintenance of Effort Status Cases, Recipients, Children, Adults and Expenditures	13
Table 12:	Safety Net Assistance-FNP-Cash Total Cases, Recipients, Children, Adults and Expenditures	14
Table 13:	Safety Net Assistance-FNP-Cash by Maintenance of Effort Status Cases, Recipients, Children, Adults and Expenditures	15
Table 14:	Safety Net Assistance-FNP-Non-Cash Total Cases, Recipients, Children, Adults and Expenditures	16
Table 15:	Safety Net Assistance-FNP-Non-Cash by Maintenance of Effort Status Cases, Recipients, Children, Adults and Expenditures	17

Supplemental Nutrition Assistance Program

Table 16:	Supplemental Nutrition Assistance Program Households, Persons and Value of Supplemental Nutrition Assistance Program Benefits	18
------------------	---	----

Supplemental Security Income

Table 17:	Supplemental Security Income Recipients, Total Program Expenditures and Federal and State Shares	19
Table 18:	Supplemental Security Income Recipients by Living Arrangement and Location	20
Table 19:	Supplemental Security Income Recipients by Living Arrangement and Category of Assistance	20

Table of Contents

Child Support

Table 20:	Child Support Collections (IV-D)	21
------------------	----------------------------------	----

Aggregate Claims

Table 21:	Aggregate Claims - Total Temporary Assistance	22
Table 22:	Aggregate Claims - Federally Participating - TANF	23
Table 23:	Aggregate Claims - Federally Non-Participating Safety Net Assistance-FNP Maintenance of Effort	24
Table 24:	Aggregate Claims - Federally Non-Participating Safety Net Assistance-FNP and Family Assistance-FNP Maintenance of Effort	25

Home Energy Assistance Program

Table 25:	Home Energy Assistance Program Number and Dollar Amount of Benefits Authorized and Administrative Allocations	26
Table 26:	Home Energy Assistance Program - Non-Emergency Number, Total Dollar Amount and Average Dollar Amount of Benefits Authorized	27
Table 27:	Home Energy Assistance Program - Emergency Number, Total Dollar Amount and Average Dollar Amount of Benefits Authorized	28

Welfare to Work Statistical Tables

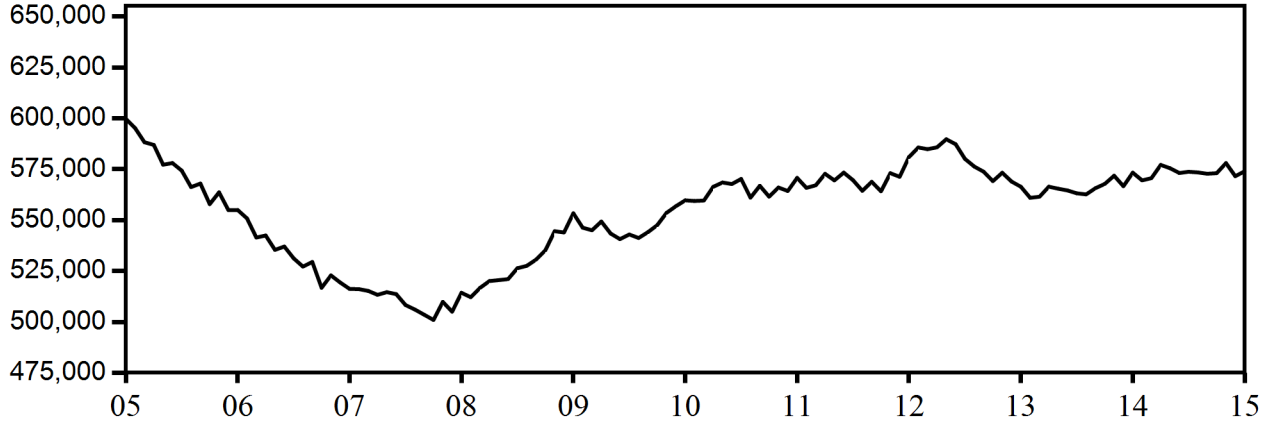
Table 28:	Federal All Families Work Participation Rates TANF, Safety Net Assistance MOE and Combined TANF and Safety Net Assistance MOE	29
Table 29:	Work Sanction Status by Presence in Federal All Families Work Participation Calculation TANF, Safety Net Assistance MOE and Combined TANF and Safety Net Assistance MOE	30
Table 30:	Temporary Assistance Cases with Earned Income Cases, Average Gross Earned Income and Average Net Earned Income after Application of Disregards	31

2015 Summary Tables

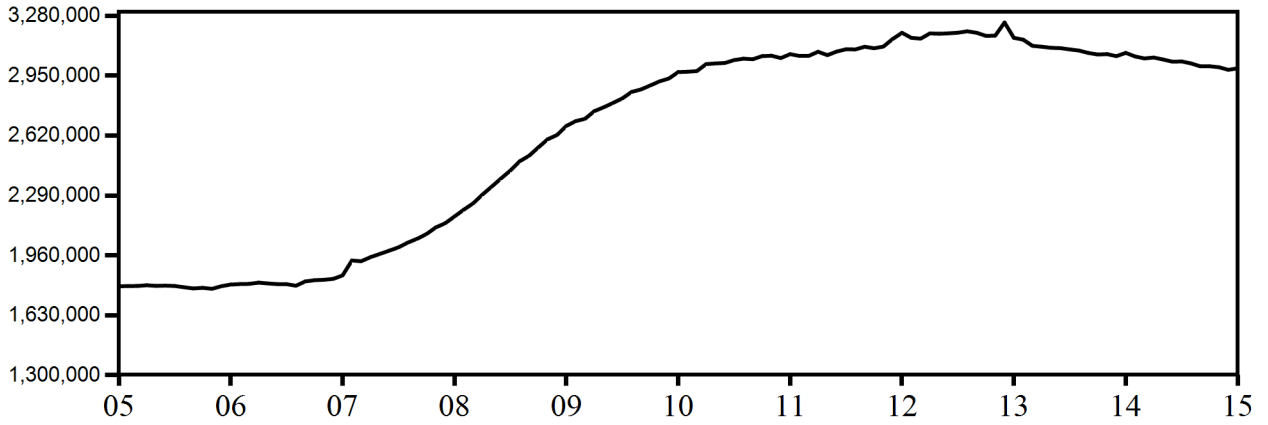
Table A-1:	Comparison of Monthly Average Cases and Recipients, and Annual Expenditures	33
Table A-2:	Temporary Assistance Year to Year Comparison by Local District	34
Table A-3:	Supplemental Nutrition Assistance Program Year to Year Comparison by Local District	35
Table A-4:	Supplemental Security Income Year to Year Comparison by Local District	36
Table A-5:	Temporary Assistance Monthly Average Cases, Recipients, Children and Adults, and Annual Expenditures	37
Table A-6:	Family Assistance-FP Monthly Average Cases, Recipients, Children and Adults, and Annual Expenditures	38
Table A-7:	Safety Net Assistance Monthly Average Cases, Recipients, Children and Adults, and Annual Expenditures	39
Table A-8:	Temporary Assistance by Funding Source Monthly Average Cases, Recipients, Children and Adults, and Annual Expenditures	40
Table A-9:	Safety Net Assistance-FNP by Case Category Monthly Average Cases, Recipients, Children and Adults, and Annual Expenditures	41
Table A-10:	Supplemental Nutrition Assistance Program Monthly Average Households and Persons, and Annual Expenditures	42
Table A-11:	Supplemental Security Income Monthly Average Recipients, Total Annual Program Expenditures and Federal and State Shares	43
Table A-12:	Child Support Collections (IV-D)	44

NEW YORK STATE
January 2006 - December 2015
TEN YEAR TREND

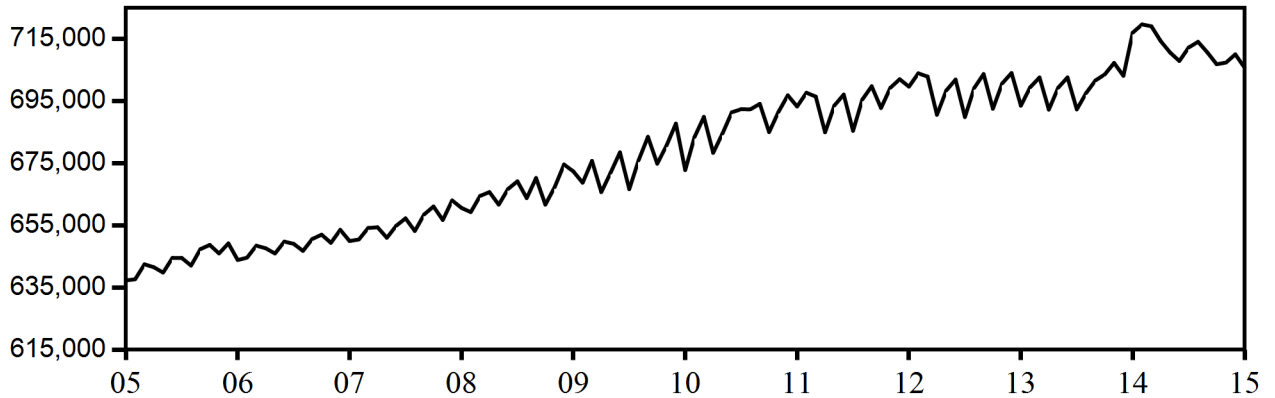
Temporary Assistance Recipients



Supplemental Nutrition Assistance Program Recipients



**Supplemental Security Income Recipients
(Including Mental Hygiene)**



SELECTED SUMMARY PROGRAM DATA
BY REGION

Table 1
TEMPORARY AND DISABILITY ASSISTANCE CASES
December 2015

Region	Cases				
	Temporary Assistance by Program			Supplemental Security Income	Supplemental Nutrition Assistance Program
	Total	Family Assistance-FP	Safety Net Assistance		
New York State	299,646	104,706	194,940	701,230	1,646,713
New York City	192,056	59,116	132,940	425,442	947,736
Rest of State	107,590	45,590	62,000	275,788	698,977

Table 2
TEMPORARY AND DISABILITY ASSISTANCE RECIPIENTS
December 2015

Region	Recipients				
	Temporary Assistance by Program			Supplemental Security Income	Supplemental Nutrition Assistance Program
	Total	Family Assistance-FP	Safety Net Assistance		
New York State	574,037	242,930	331,107	701,230	2,990,471
New York City	360,398	137,515	222,883	425,442	1,688,470
Rest of State	213,639	105,415	108,224	275,788	1,302,001

Table 3
TEMPORARY AND DISABILITY ASSISTANCE EXPENDITURES
December 2015

Region	Expenditures				
	Temporary Assistance by Program			Supplemental Security Income	Supplemental Nutrition Assistance Program
	Total	Family Assistance-FP	Safety Net Assistance		
New York State	\$190,630,033	\$67,081,282	\$123,548,751	\$412,889,988	\$415,860,810
New York City	118,668,704	35,521,512	83,147,192	253,258,842	247,316,920
Rest of State	71,961,329	31,559,770	40,401,559	159,631,146	168,543,890

Note: Supplemental Security Income data listed here do not include Mental Hygiene data. See Tables 17 - 19 for total Supplemental Security Income data.

Table 4
TEMPORARY ASSISTANCE
 Year to Year Monthly Comparison by Local District
 Cases, Recipients and Expenditures
 December 2015

Local District	December 2015			December 2014			December 2013		
	Cases	Recipients	Expenditures	Cases	Recipients	Expenditures	Cases	Recipients	Expenditures
New York State	299,646	574,037	\$190,630,033	298,605	573,328	\$191,924,511	294,694	566,424	\$183,182,513
New York City	192,056	360,398	118,668,704	184,419	344,154	114,576,032	182,291	339,513	110,168,748
Rest of State	107,590	213,639	71,961,329	114,186	229,174	77,348,479	112,403	226,911	73,013,765
Albany	2,990	6,260	2,275,908	2,799	6,184	1,729,450	2,991	6,584	2,152,339
Allegany	484	882	260,884	498	985	244,564	509	990	248,260
Broome	3,799	7,117	2,117,952	3,769	7,174	2,108,668	3,723	7,195	2,078,513
Cattaraugus	713	1,172	393,879	625	1,043	311,105	540	862	274,252
Cayuga	950	1,789	593,714	822	1,537	491,841	836	1,573	528,348
Chautauqua	2,676	5,590	1,461,718	2,773	5,840	1,468,371	2,640	5,818	1,404,546
Chemung	781	1,340	416,145	846	1,500	438,636	827	1,466	426,196
Chenango	434	753	213,829	487	874	243,594	381	673	193,765
Clinton	884	1,404	548,493	878	1,441	532,943	892	1,534	543,646
Columbia	480	915	274,335	547	1,037	326,066	529	1,016	297,693
Cortland	669	1,121	375,564	662	1,093	395,215	637	1,135	339,306
Delaware	254	420	125,574	287	516	153,407	295	494	150,198
Dutchess	1,236	2,180	938,746	1,377	2,566	1,139,785	1,393	2,542	1,045,408
Erie	14,817	32,046	7,533,818	15,330	33,478	8,287,861	14,179	31,038	7,335,030
Essex	121	170	72,862	138	224	54,751	131	224	66,798
Franklin	572	998	290,548	524	971	278,839	537	1,050	303,450
Fulton	305	510	158,230	336	537	180,898	340	580	194,676
Genesee	293	552	175,274	327	618	196,731	351	666	199,453
Greene	400	732	241,747	456	839	263,682	550	1,028	329,930
Hamilton	16	26	5,813	17	26	7,345	14	20	5,858
Herkimer	508	847	260,434	530	946	266,192	503	908	245,777
Jefferson	1,215	2,046	695,756	1,210	2,010	679,934	948	1,558	517,562
Lewis	106	167	55,242	129	209	67,534	120	194	64,496
Livingston	761	1,393	432,578	854	1,635	450,147	817	1,572	466,006
Madison	376	674	207,438	391	705	237,620	401	734	217,718
Monroe	14,210	29,461	8,171,831	15,442	32,048	8,656,179	16,253	33,248	8,803,823
Montgomery	543	1,214	313,392	568	1,361	311,959	560	1,312	319,244
Nassau	6,595	12,016	4,990,106	7,613	13,955	5,033,166	7,284	13,446	4,957,868
Niagara	3,054	5,823	1,527,541	3,293	6,414	1,536,977	3,289	6,393	1,597,322
Oneida	4,354	10,200	2,299,407	4,573	10,796	2,430,599	4,407	10,406	2,264,265
Onondaga	7,184	15,636	3,964,217	7,404	16,131	4,012,317	7,368	15,877	3,940,262
Ontario	858	1,435	508,787	910	1,541	539,021	819	1,436	467,512
Orange	2,751	5,684	2,076,394	2,886	6,158	2,197,756	3,138	6,764	2,381,104
Orleans	705	1,235	375,553	736	1,307	386,721	722	1,317	371,608
Oswego	1,661	3,390	907,783	1,722	3,674	917,798	1,676	3,530	919,169
Otsego	217	323	179,300	227	335	198,705	232	366	190,850
Putnam	117	162	99,491	145	206	123,372	133	183	94,685
Rensselaer	1,625	4,044	1,071,407	1,760	4,301	1,130,726	1,699	4,293	1,114,106
Rockland	1,233	2,488	856,174	1,537	2,984	981,160	1,664	3,264	1,006,729
St. Lawrence	1,272	2,430	602,740	1,370	2,664	697,918	1,258	2,544	653,285
Saratoga	392	546	228,848	411	647	235,903	414	607	268,464
Schenectady	1,804	3,893	1,176,575	1,986	4,408	1,298,124	1,984	4,334	1,251,438
Schoharie	191	319	118,581	196	337	124,724	215	370	120,754
Schuyler	235	450	130,741	212	403	124,541	236	440	140,610
Seneca	261	494	147,559	283	556	169,443	260	495	138,548
Steuben	960	1,736	529,442	1,007	1,870	519,311	971	1,883	565,852
Suffolk	9,653	17,532	10,704,833	10,627	19,408	13,084,796	9,938	18,672	11,161,931
Sullivan	728	1,351	518,952	613	1,261	348,610	877	1,802	501,296
Tioga	373	620	227,215	381	650	217,988	391	654	242,896
Tompkins	776	1,326	473,611	813	1,415	452,094	897	1,595	496,506
Ulster	1,942	3,587	1,771,161	2,225	4,132	1,483,936	2,115	4,035	1,418,723
Warren	222	337	179,674	245	402	196,450	271	461	207,170
Washington	388	688	353,258	373	620	277,964	345	581	248,699
Wayne	638	1,090	315,972	627	1,046	321,813	634	1,070	347,959
Westchester	6,436	12,416	6,819,563	7,030	13,543	8,567,889	6,908	13,475	6,997,815
Wyoming	202	333	105,226	193	342	96,900	207	358	106,407
Yates	170	276	89,514	166	271	118,440	154	246	87,641

Table 5
TEMPORARY ASSISTANCE
Cases, Recipients, Children, Adults and Expenditures by Local District
December 2015

Local District	Temporary Assistance				
	Cases	Recipients	Children	Adults	Expenditures
New York State	299,646	574,037	296,136	277,901	\$190,630,033
New York City	192,056	360,398	174,704	185,694	118,668,704
Rest of State	107,590	213,639	121,432	92,207	71,961,329
Albany	2,990	6,260	3,652	2,608	2,275,908
Allegany	484	882	487	395	260,884
Broome	3,799	7,117	3,975	3,142	2,117,952
Cattaraugus	713	1,172	646	526	393,879
Cayuga	950	1,789	951	838	593,714
Chautauqua	2,676	5,590	3,157	2,433	1,461,718
Chemung	781	1,340	861	479	416,145
Chenango	434	753	454	299	213,829
Clinton	884	1,404	802	602	548,493
Columbia	480	915	510	405	274,335
Cortland	669	1,121	544	577	375,564
Delaware	254	420	260	160	125,574
Dutchess	1,236	2,180	1,383	797	938,746
Erie	14,817	32,046	18,496	13,550	7,533,818
Essex	121	170	100	70	72,862
Franklin	572	998	495	503	290,548
Fulton	305	510	303	207	158,230
Genesee	293	552	337	215	175,274
Greene	400	732	383	349	241,747
Hamilton	16	26	13	13	5,813
Herkimer	508	847	469	378	260,434
Jefferson	1,215	2,046	1,010	1,036	695,756
Lewis	106	167	110	57	55,242
Livingston	761	1,393	695	698	432,578
Madison	376	674	396	278	207,438
Monroe	14,210	29,461	16,890	12,571	8,171,831
Montgomery	543	1,214	779	435	313,392
Nassau	6,595	12,016	6,392	5,624	4,990,106
Niagara	3,054	5,823	3,164	2,659	1,527,541
Oneida	4,354	10,200	5,976	4,224	2,299,407
Onondaga	7,184	15,636	9,251	6,385	3,964,217
Ontario	858	1,435	771	664	508,787
Orange	2,751	5,684	3,344	2,340	2,076,394
Orleans	705	1,235	663	572	375,553
Oswego	1,661	3,390	1,907	1,483	907,783
Otsego	217	323	164	159	179,300
Putnam	117	162	88	74	99,491
Rensselaer	1,625	4,044	2,620	1,424	1,071,407
Rockland	1,233	2,488	1,565	923	856,174
St. Lawrence	1,272	2,430	1,298	1,132	602,740
Saratoga	392	546	348	198	228,848
Schenectady	1,804	3,893	2,485	1,408	1,176,575
Schoharie	191	319	193	126	118,581
Schuyler	235	450	242	208	130,741
Seneca	261	494	285	209	147,559
Steuben	960	1,736	940	796	529,442
Suffolk	9,653	17,532	8,990	8,542	10,704,833
Sullivan	728	1,351	860	491	518,952
Tioga	373	620	406	214	227,215
Tompkins	776	1,326	651	675	473,611
Ulster	1,942	3,587	1,866	1,721	1,771,161
Warren	222	337	196	141	179,674
Washington	388	688	430	258	353,258
Wayne	638	1,090	627	463	315,972
Westchester	6,436	12,416	7,187	5,229	6,819,563
Wyoming	202	333	190	143	105,226
Yates	170	276	175	101	89,514

Table 6
FAMILY ASSISTANCE-FP
Cases, Recipients, Children, Adults and Expenditures by Local District
December 2015

Local District	Family Assistance-FP				
	Cases	Recipients	Children	Adults	Expenditures
New York State	104,706	242,930	179,429	63,501	\$67,081,282
New York City	59,116	137,515	100,323	37,192	35,521,512
Rest of State	45,590	105,415	79,106	26,309	31,559,770
Albany	1,325	3,087	2,265	822	972,166
Allegany	216	467	359	108	116,393
Broome	1,576	3,518	2,670	848	945,868
Cattaraugus	320	656	519	137	180,308
Cayuga	392	918	666	252	258,735
Chautauqua	1,111	2,632	1,935	697	653,975
Chemung	399	812	695	117	219,182
Chenango	229	477	380	97	117,029
Clinton	414	793	663	130	232,760
Columbia	221	510	375	135	131,954
Cortland	269	601	437	164	156,838
Delaware	151	303	252	51	76,728
Dutchess	608	1,255	1,046	209	489,035
Erie	6,342	15,345	11,166	4,179	3,497,678
Essex	64	110	95	15	38,348
Franklin	226	479	343	136	112,494
Fulton	166	359	284	75	90,520
Genesee	150	348	271	77	88,882
Greene	153	362	270	92	87,529
Hamilton	6	16	13	3	3,233
Herkimer	244	479	372	107	121,562
Jefferson	461	1,040	790	250	259,166
Lewis	63	112	92	20	32,654
Livingston	320	729	501	228	197,372
Madison	177	369	288	81	94,514
Monroe	5,711	13,630	9,971	3,659	3,659,493
Montgomery	316	792	608	184	182,416
Nassau	2,448	5,456	4,176	1,280	2,008,519
Niagara	1,230	2,753	2,025	728	690,006
Oneida	1,824	4,708	3,410	1,298	1,019,355
Onondaga	3,202	7,712	5,672	2,040	1,838,316
Ontario	395	814	617	197	226,605
Orange	1,170	2,756	2,089	667	944,996
Orleans	279	598	451	147	163,334
Oswego	763	1,877	1,371	506	444,887
Otsego	94	178	143	35	78,924
Putnam	50	86	74	12	34,551
Rensselaer	940	2,248	1,618	630	603,442
Rockland	546	1,228	1,044	184	407,398
St. Lawrence	528	1,230	914	316	266,018
Saratoga	211	353	320	33	106,993
Schenectady	921	2,126	1,654	472	620,488
Schoharie	100	214	174	40	59,814
Schuyler	101	251	184	67	55,947
Seneca	122	270	198	72	65,879
Steuben	386	878	670	208	217,256
Suffolk	3,506	8,205	6,138	2,067	4,364,926
Sullivan	375	791	651	140	213,924
Tioga	233	444	364	80	137,398
Tompkins	278	597	438	159	162,018
Ulster	769	1,678	1,216	462	685,601
Warren	112	208	178	30	69,782
Washington	213	455	369	86	186,586
Wayne	316	675	531	144	165,981
Westchester	2,644	6,033	4,768	1,265	2,588,553
Wyoming	111	220	172	48	61,705
Yates	93	174	151	23	53,736

Table 7
SAFETY NET ASSISTANCE*
Cases, Recipients, Children, Adults and Expenditures by Local District
December 2015

Local District	Safety Net Assistance					Expenditures
	Cases	Recipients	Children	Adults		
New York State	194,940	331,107	116,707	214,400		\$123,548,751
New York City	132,940	222,883	74,381	148,502		83,147,192
Rest of State	62,000	108,224	42,326	65,898		40,401,559
Albany	1,665	3,173	1,387	1,786		1,303,742
Allegany	268	415	128	287		144,491
Broome	2,223	3,599	1,305	2,294		1,172,084
Cattaraugus	393	516	127	389		213,571
Cayuga	558	871	285	586		334,979
Chautauqua	1,565	2,958	1,222	1,736		807,743
Chemung	382	528	166	362		196,963
Chenango	205	276	74	202		96,800
Clinton	470	611	139	472		315,733
Columbia	259	405	135	270		142,381
Cortland	400	520	107	413		218,726
Delaware	103	117	8	109		48,846
Dutchess	628	925	337	588		449,711
Erie	8,475	16,701	7,330	9,371		4,036,140
Essex	57	60	5	55		34,514
Franklin	346	519	152	367		178,054
Fulton	139	151	19	132		67,710
Genesee	143	204	66	138		86,392
Greene	247	370	113	257		154,218
Hamilton	10	10	0	10		2,580
Herkimer	264	368	97	271		138,872
Jefferson	754	1,006	220	786		436,590
Lewis	43	55	18	37		22,588
Livingston	441	664	194	470		235,206
Madison	199	305	108	197		112,924
Monroe	8,499	15,831	6,919	8,912		4,512,338
Montgomery	227	422	171	251		130,976
Nassau	4,147	6,560	2,216	4,344		2,981,587
Niagara	1,824	3,070	1,139	1,931		837,535
Oneida	2,530	5,492	2,566	2,926		1,280,052
Onondaga	3,982	7,924	3,579	4,345		2,125,901
Ontario	463	621	154	467		282,182
Orange	1,581	2,928	1,255	1,673		1,131,398
Orleans	426	637	212	425		212,219
Oswego	898	1,513	536	977		462,896
Otsego	123	145	21	124		100,376
Putnam	67	76	14	62		64,940
Rensselaer	685	1,796	1,002	794		467,965
Rockland	687	1,260	521	739		448,776
St. Lawrence	744	1,200	384	816		336,722
Saratoga	181	193	28	165		121,855
Schenectady	883	1,767	831	936		556,087
Schoharie	91	105	19	86		58,767
Schuyler	134	199	58	141		74,794
Seneca	139	224	87	137		81,680
Steuben	574	858	270	588		312,186
Suffolk	6,147	9,327	2,852	6,475		6,339,907
Sullivan	353	560	209	351		305,028
Tioga	140	176	42	134		89,817
Tompkins	498	729	213	516		311,593
Ulster	1,173	1,909	650	1,259		1,085,560
Warren	110	129	18	111		109,892
Washington	175	233	61	172		166,672
Wayne	322	415	96	319		149,991
Westchester	3,792	6,383	2,419	3,964		4,231,010
Wyoming	91	113	18	95		43,521
Yates	77	102	24	78		35,778

* Includes Federally Non-Participating Family Assistance cases (non-disabled two-parent Family Assistance cases).

Table 8
TEMPORARY ASSISTANCE BY FUNDING SOURCE
Cases, Recipients, and Expenditures by Local District
December 2015

Local District	Total			Federally Participating-TANF Family Assistance-FP and Safety Net Assistance-FP			Federally Non-Participating Safety Net Assistance-FNP and Family Assistance-FNP		
	Cases	Recipients	Expenditures	Cases	Recipients	Expenditures	Cases	Recipients	Expenditures
New York State	299,646	574,037	\$190,630,033	105,930	246,098	\$67,900,711	193,716	327,939	\$122,729,322
New York City	192,056	360,398	118,668,704	59,265	137,857	35,591,955	132,791	222,541	83,076,749
Rest of State	107,590	213,639	71,961,329	46,665	108,241	32,308,756	60,925	105,398	39,652,573
Albany	2,990	6,260	2,275,908	1,336	3,112	978,022	1,654	3,148	1,297,886
Allegany	484	882	260,884	218	472	117,667	266	410	143,217
Broome	3,799	7,117	2,117,952	1,622	3,633	981,885	2,177	3,484	1,136,067
Cattaraugus	713	1,172	393,879	336	695	188,425	377	477	205,454
Cayuga	950	1,789	593,714	420	1,004	288,651	530	785	305,063
Chautauqua	2,676	5,590	1,461,718	1,136	2,689	663,728	1,540	2,901	797,990
Chemung	781	1,340	416,145	403	824	221,600	378	516	194,545
Chenango	434	753	213,829	232	484	118,913	202	269	94,916
Clinton	884	1,404	548,493	419	800	236,430	465	604	312,063
Columbia	480	915	274,335	226	526	134,726	254	389	139,609
Cortland	669	1,121	375,564	279	628	161,995	390	493	213,569
Delaware	254	420	125,574	151	303	76,728	103	117	48,846
Dutchess	1,236	2,180	938,746	612	1,267	494,636	624	913	444,110
Erie	14,817	32,046	7,533,818	6,446	15,608	3,548,657	8,371	16,438	3,985,161
Essex	121	170	72,862	67	115	39,596	54	55	33,266
Franklin	572	998	290,548	226	479	112,494	346	519	178,054
Fulton	305	510	158,230	166	359	90,520	139	151	67,710
Genesee	293	552	175,274	155	360	91,613	138	192	83,661
Greene	400	732	241,747	153	362	87,529	247	370	154,218
Hamilton	16	26	5,813	6	16	3,233	10	10	2,580
Herkimer	508	847	260,434	247	488	123,447	261	359	136,987
Jefferson	1,215	2,046	695,756	474	1,069	264,984	741	977	430,772
Lewis	106	167	55,242	64	116	33,599	42	51	21,643
Livingston	761	1,393	432,578	327	745	201,446	434	648	231,132
Madison	376	674	207,438	187	405	100,259	189	269	107,179
Monroe	14,210	29,461	8,171,831	6,082	14,618	3,862,227	8,128	14,843	4,309,604
Montgomery	543	1,214	313,392	318	796	183,225	225	418	130,167
Nassau	6,595	12,016	4,990,106	2,453	5,467	2,012,336	4,142	6,549	2,977,770
Niagara	3,054	5,823	1,527,541	1,312	2,960	727,541	1,742	2,863	800,000
Oneida	4,354	10,200	2,299,407	1,859	4,800	1,042,687	2,495	5,400	1,256,720
Onondaga	7,184	15,636	3,964,217	3,216	7,755	1,845,251	3,968	7,881	2,118,966
Ontario	858	1,435	508,787	401	829	231,384	457	606	277,403
Orange	2,751	5,684	2,076,394	1,192	2,800	959,904	1,559	2,884	1,116,490
Orleans	705	1,235	375,553	290	630	169,196	415	605	206,357
Oswego	1,661	3,390	907,783	791	1,983	459,891	870	1,407	447,892
Otsego	217	323	179,300	96	186	81,309	121	137	97,991
Putnam	117	162	99,491	54	95	42,472	63	67	57,019
Rensselaer	1,625	4,044	1,071,407	952	2,285	612,141	673	1,759	459,266
Rockland	1,233	2,488	856,174	552	1,244	412,206	681	1,244	443,968
St. Lawrence	1,272	2,430	602,740	531	1,236	269,569	741	1,194	333,171
Saratoga	392	546	228,848	213	357	107,390	179	189	121,458
Schenectady	1,804	3,893	1,176,575	924	2,133	621,472	880	1,760	555,103
Schoharie	191	319	118,581	100	214	59,814	91	105	58,767
Schuyler	235	450	130,741	101	251	55,947	134	199	74,794
Seneca	261	494	147,559	124	275	66,858	137	219	80,701
Steuben	960	1,736	529,442	388	886	219,806	572	850	309,636
Suffolk	9,653	17,532	10,704,833	3,564	8,360	4,470,246	6,089	9,172	6,234,587
Sullivan	728	1,351	518,952	382	805	226,796	346	546	292,156
Tioga	373	620	227,215	242	456	154,411	131	164	72,804
Tompkins	776	1,326	473,611	294	634	176,995	482	692	296,616
Ulster	1,942	3,587	1,771,161	780	1,710	696,665	1,162	1,877	1,074,496
Warren	222	337	179,674	117	223	72,289	105	114	107,385
Washington	388	688	353,258	220	476	200,799	168	212	152,459
Wayne	638	1,090	315,972	336	724	184,656	302	366	131,316
Westchester	6,436	12,416	6,819,563	2,668	6,097	2,606,381	3,768	6,319	4,213,182
Wyoming	202	333	105,226	112	223	62,373	90	110	42,853
Yates	170	276	89,514	93	174	53,736	77	102	35,778

Table 9
TEMPORARY ASSISTANCE FOR NEEDY FAMILIES-FP BY PROGRAM
 Cases, Recipients, Children, Adults and Expenditures by Local District
 December 2015

Local District	Family Assistance-FP					Safety Net Assistance-FP				
	Cases	Recipients	Children	Adults	Expenditures	Cases	Recipients	Children	Adults	Expenditures
New York State	104,706	242,930	179,429	63,501	\$67,081,282	1,224	3,168	1,851	1,317	\$819,429
New York City	59,116	137,515	100,323	37,192	35,521,512	149	342	244	98	70,443
Rest of State	45,590	105,415	79,106	26,309	31,559,770	1,075	2,826	1,607	1,219	748,986
Albany	1,325	3,087	2,265	822	972,166	11	25	14	11	5,856
Allegany	216	467	359	108	116,393	2	5	2	3	1,274
Broome	1,576	3,518	2,670	848	945,868	46	115	61	54	36,017
Cattaraugus	320	656	519	137	180,308	16	39	22	17	8,117
Cayuga	392	918	666	252	258,735	28	86	50	36	29,916
Chautauqua	1,111	2,632	1,935	697	653,975	25	57	29	28	9,753
Chemung	399	812	695	117	219,182	4	12	6	6	2,418
Chenango	229	477	380	97	117,029	3	7	4	3	1,884
Clinton	414	793	663	130	232,760	5	7	2	5	3,670
Columbia	221	510	375	135	131,954	5	16	9	7	2,772
Cortland	269	601	437	164	156,838	10	27	15	12	5,157
Delaware	151	303	252	51	76,728	0	0	0	0	0
Dutchess	608	1,255	1,046	209	489,035	4	12	7	5	5,601
Erie	6,342	15,345	11,166	4,179	3,497,678	104	263	149	114	50,979
Essex	64	110	95	15	38,348	3	5	2	3	1,248
Franklin	226	479	343	136	112,494	0	0	0	0	0
Fulton	166	359	284	75	90,520	0	0	0	0	0
Genesee	150	348	271	77	88,882	5	12	7	5	2,731
Greene	153	362	270	92	87,529	0	0	0	0	0
Hamilton	6	16	13	3	3,233	0	0	0	0	0
Herkimer	244	479	372	107	121,562	3	9	4	5	1,885
Jefferson	461	1,040	790	250	259,166	13	29	15	14	5,818
Lewis	63	112	92	20	32,654	1	4	3	1	945
Livingston	320	729	501	228	197,372	7	16	8	8	4,074
Madison	177	369	288	81	94,514	10	36	23	13	5,745
Monroe	5,711	13,630	9,971	3,659	3,659,493	371	988	579	409	202,734
Montgomery	316	792	608	184	182,416	2	4	2	2	809
Nassau	2,448	5,456	4,176	1,280	2,008,519	5	11	6	5	3,817
Niagara	1,230	2,753	2,025	728	690,006	82	207	111	96	37,535
Oneida	1,824	4,708	3,410	1,298	1,019,355	35	92	50	42	23,332
Onondaga	3,202	7,712	5,672	2,040	1,838,316	14	43	27	16	6,935
Ontario	395	814	617	197	226,605	6	15	9	6	4,779
Orange	1,170	2,756	2,089	667	944,996	22	44	23	21	14,908
Orleans	279	598	451	147	163,334	11	32	20	12	5,862
Oswego	763	1,877	1,371	506	444,887	28	106	69	37	15,004
Otsego	94	178	143	35	78,924	2	8	5	3	2,385
Putnam	50	86	74	12	34,551	4	9	5	4	7,921
Rensselaer	940	2,248	1,618	630	603,442	12	37	24	13	8,699
Rockland	546	1,228	1,044	184	407,398	6	16	7	9	4,808
St. Lawrence	528	1,230	914	316	266,018	3	6	3	3	3,551
Saratoga	211	353	320	33	106,993	2	4	2	2	397
Schenectady	921	2,126	1,654	472	620,488	3	7	4	3	984
Schoharie	100	214	174	40	59,814	0	0	0	0	0
Schuyler	101	251	184	67	55,947	0	0	0	0	0
Seneca	122	270	198	72	65,879	2	5	3	2	979
Steuben	386	878	670	208	217,256	2	8	4	4	2,550
Suffolk	3,506	8,205	6,138	2,067	4,364,926	58	155	84	71	105,320
Sullivan	375	791	651	140	213,924	7	14	8	6	12,872
Tioga	233	444	364	80	137,398	9	12	3	9	17,013
Tompkins	278	597	438	159	162,018	16	37	19	18	14,977
Ulster	769	1,678	1,216	462	685,601	11	32	19	13	11,064
Warren	112	208	178	30	69,782	5	15	9	6	2,507
Washington	213	455	369	86	186,586	7	21	14	7	14,213
Wayne	316	675	531	144	165,981	20	49	28	21	18,675
Westchester	2,644	6,033	4,768	1,265	2,588,553	24	64	36	28	17,828
Wyoming	111	220	172	48	61,705	1	3	2	1	668
Yates	93	174	151	23	53,736	0	0	0	0	0

Table 10
SAFETY NET ASSISTANCE-FNP AND FAMILY ASSISTANCE-FNP
Cases, Recipients, Children, Adults and Expenditures by Local District
December 2015

Local District	Safety Net Assistance-FNP and Family Assistance-FNP				
	Cases	Recipients	Children	Adults	Expenditures
New York State	193,716	327,939	114,856	213,083	\$122,729,322
New York City	132,791	222,541	74,137	148,404	83,076,749
Rest of State	60,925	105,398	40,719	64,679	39,652,573
Albany	1,654	3,148	1,373	1,775	1,297,886
Allegany	266	410	126	284	143,217
Broome	2,177	3,484	1,244	2,240	1,136,067
Cattaraugus	377	477	105	372	205,454
Cayuga	530	785	235	550	305,063
Chautauqua	1,540	2,901	1,193	1,708	797,990
Chemung	378	516	160	356	194,545
Chenango	202	269	70	199	94,916
Clinton	465	604	137	467	312,063
Columbia	254	389	126	263	139,609
Cortland	390	493	92	401	213,569
Delaware	103	117	8	109	48,846
Dutchess	624	913	330	583	444,110
Erie	8,371	16,438	7,181	9,257	3,985,161
Essex	54	55	3	52	33,266
Franklin	346	519	152	367	178,054
Fulton	139	151	19	132	67,710
Genesee	138	192	59	133	83,661
Greene	247	370	113	257	154,218
Hamilton	10	10	0	10	2,580
Herkimer	261	359	93	266	136,987
Jefferson	741	977	205	772	430,772
Lewis	42	51	15	36	21,643
Livingston	434	648	186	462	231,132
Madison	189	269	85	184	107,179
Monroe	8,128	14,843	6,340	8,503	4,309,604
Montgomery	225	418	169	249	130,167
Nassau	4,142	6,549	2,210	4,339	2,977,770
Niagara	1,742	2,863	1,028	1,835	800,000
Oneida	2,495	5,400	2,516	2,884	1,256,720
Onondaga	3,968	7,881	3,552	4,329	2,118,966
Ontario	457	606	145	461	277,403
Orange	1,559	2,884	1,232	1,652	1,116,490
Orleans	415	605	192	413	206,357
Oswego	870	1,407	467	940	447,892
Otsego	121	137	16	121	97,991
Putnam	63	67	9	58	57,019
Rensselaer	673	1,759	978	781	459,266
Rockland	681	1,244	514	730	443,968
St. Lawrence	741	1,194	381	813	333,171
Saratoga	179	189	26	163	121,458
Schenectady	880	1,760	827	933	555,103
Schoharie	91	105	19	86	58,767
Schuyler	134	199	58	141	74,794
Seneca	137	219	84	135	80,701
Steuben	572	850	266	584	309,636
Suffolk	6,089	9,172	2,768	6,404	6,234,587
Sullivan	346	546	201	345	292,156
Tioga	131	164	39	125	72,804
Tompkins	482	692	194	498	296,616
Ulster	1,162	1,877	631	1,246	1,074,496
Warren	105	114	9	105	107,385
Washington	168	212	47	165	152,459
Wayne	302	366	68	298	131,316
Westchester	3,768	6,319	2,383	3,936	4,213,182
Wyoming	90	110	16	94	42,853
Yates	77	102	24	78	35,778

Table 11
SAFETY NET ASSISTANCE-FNP BY MAINTENANCE OF EFFORT STATUS
Maintenance of Effort (MOE) vs. Non-Maintenance of Effort (Non-MOE)
Cases, Recipients, Children, Adults and Expenditures by Local District
December 2015

Local District	Maintenance of Effort (MOE)					Non-Maintenance of Effort (Non-MOE)*				
	Cases	Recipients	Children	Adults	Expenditures	Cases	Recipients	Children	Adults	Expenditures
New York State	38,603	126,515	84,029	42,486	\$27,735,315	155,113	201,424	30,827	170,597	\$94,994,007
New York City	27,393	87,146	56,333	30,813	18,223,391	105,398	135,395	17,804	117,591	64,853,358
Rest of State	11,210	39,369	27,696	11,673	9,511,924	49,715	66,029	13,023	53,006	30,140,649
Albany	362	1,313	938	375	378,634	1,292	1,835	435	1,400	919,252
Allegany	38	124	84	40	25,926	228	286	42	244	117,291
Broome	345	1,197	835	362	249,759	1,832	2,287	409	1,878	886,308
Cattaraugus	23	74	52	22	15,615	354	403	53	350	189,839
Cayuga	58	187	127	60	36,532	472	598	108	490	268,531
Chautauqua	373	1,264	853	411	281,836	1,167	1,637	340	1,297	516,154
Chemung	27	90	64	26	17,526	351	426	96	330	177,019
Chenango	11	39	28	11	6,314	191	230	42	188	88,602
Clinton	42	124	80	44	24,123	423	480	57	423	287,940
Columbia	35	125	89	36	20,387	219	264	37	227	119,222
Cortland	25	69	44	25	14,383	365	424	48	376	199,186
Delaware	0	0	0	0	0	103	117	8	109	48,846
Dutchess	83	290	208	82	73,027	541	623	122	501	371,083
Erie	1,667	6,039	4,332	1,707	1,070,265	6,704	10,399	2,849	7,550	2,914,896
Essex	0	0	0	0	0	54	55	3	52	33,266
Franklin	33	109	76	33	19,466	313	410	76	334	158,588
Fulton	1	3	2	1	232	138	148	17	131	67,478
Genesee	14	51	38	13	10,834	124	141	21	120	72,827
Greene	41	131	92	39	22,516	206	239	21	218	131,702
Hamilton	0	0	0	0	0	10	10	0	10	2,580
Herkimer	32	108	75	33	19,776	229	251	18	233	117,211
Jefferson	42	133	92	41	24,220	699	844	113	731	406,552
Lewis	1	5	4	1	551	41	46	11	35	21,092
Livingston	49	154	100	54	29,647	385	494	86	408	201,485
Madison	25	91	64	27	16,496	164	178	21	157	90,683
Monroe	2,142	7,479	5,248	2,231	1,503,804	5,986	7,364	1,092	6,272	2,805,800
Montgomery	49	173	121	52	31,154	176	245	48	197	99,013
Nassau	792	2,539	1,732	807	824,434	3,350	4,010	478	3,532	2,153,336
Niagara	301	1,059	740	319	186,196	1,441	1,804	288	1,516	613,804
Oneida	470	1,837	1,339	498	276,489	2,025	3,563	1,177	2,386	980,231
Onondaga	712	2,752	2,017	735	482,823	3,256	5,129	1,535	3,594	1,636,143
Ontario	38	135	95	40	31,233	419	471	50	421	246,170
Orange	381	1,358	958	400	366,070	1,178	1,526	274	1,252	750,420
Orleans	48	161	111	50	35,425	367	444	81	363	170,932
Oswego	108	368	255	113	66,308	762	1,039	212	827	381,584
Otsego	0	0	0	0	0	121	137	16	121	97,991
Putnam	2	4	2	2	999	61	63	7	56	56,020
Rensselaer	241	883	629	254	147,825	432	876	349	527	311,441
Rockland	81	301	218	83	49,623	600	943	296	647	394,345
St. Lawrence	86	263	178	85	45,505	655	931	203	728	287,666
Saratoga	0	0	0	0	0	179	189	26	163	121,458
Schenectady	224	837	605	232	144,651	656	923	222	701	410,452
Schoharie	2	6	4	2	1,311	89	99	15	84	57,456
Schuyler	13	42	25	17	8,880	121	157	33	124	65,914
Seneca	21	72	50	22	11,157	116	147	34	113	69,544
Steuben	66	229	158	71	36,117	506	621	108	513	273,519
Suffolk	817	2,972	2,092	880	1,483,623	5,272	6,200	676	5,524	4,750,964
Sullivan	46	172	126	46	52,581	300	374	75	299	239,575
Tioga	9	27	21	6	5,591	122	137	18	119	67,213
Tompkins	49	173	122	51	24,949	433	519	72	447	271,667
Ulster	174	574	395	179	184,678	988	1,303	236	1,067	889,818
Warren	2	7	6	1	1,119	103	107	3	104	106,266
Washington	6	20	14	6	6,873	162	192	33	159	145,586
Wayne	17	51	35	16	11,347	285	315	33	282	119,969
Westchester	978	3,124	2,101	1,023	1,126,707	2,790	3,195	282	2,913	3,086,475
Wyoming	5	23	16	7	4,218	85	87	0	87	38,635
Yates	3	8	6	2	2,169	74	94	18	76	33,609

* The Non-MOE category includes otherwise Temporary Assistance for Needy Families eligible or otherwise Safety Net Assistance MOE eligible non-disabled two-parent cases.

Table 12
SAFETY NET ASSISTANCE-FNP-CASH TOTAL*
Cases, Recipients, Children, Adults and Expenditures by Local District
December 2015

Local District	Safety Net Assistance-FNP Cash Total				
	Cases	Recipients	Children	Adults	Expenditures
New York State	See Note	See Note	See Note	See Note	See Note
New York City	See Note	See Note	See Note	See Note	See Note
Rest of State	34,697	49,253	11,870	37,383	\$20,644,212
Albany	925	1,395	381	1,014	682,068
Allegany	145	199	38	161	65,557
Broome	1,229	1,564	289	1,275	557,718
Cattaraugus	249	315	61	254	121,005
Cayuga	363	478	100	378	195,439
Chautauqua	791	1,155	270	885	328,922
Chemung	298	375	100	275	142,791
Chenango	159	195	42	153	68,895
Clinton	350	429	78	351	237,564
Columbia	140	183	34	149	62,981
Cortland	232	280	41	239	111,834
Delaware	84	98	8	90	35,620
Dutchess	374	496	149	347	241,964
Erie	4,750	8,026	2,554	5,472	2,076,525
Essex	45	46	3	43	21,850
Franklin	240	321	67	254	121,042
Fulton	109	119	17	102	44,978
Genesee	64	70	10	60	30,707
Greene	149	187	24	163	92,081
Hamilton	8	8	0	8	2,143
Herkimer	163	189	24	165	78,006
Jefferson	487	612	97	515	270,820
Lewis	26	31	6	25	13,030
Livingston	323	428	83	345	165,967
Madison	130	176	52	124	80,019
Monroe	3,808	5,327	1,283	4,044	1,811,438
Montgomery	137	207	50	157	72,827
Nassau	2,262	2,719	331	2,388	1,471,129
Niagara	916	1,199	229	970	369,872
Oneida	1,587	2,929	1,038	1,891	729,688
Onondaga	2,891	4,833	1,637	3,196	1,463,980
Ontario	301	349	42	307	155,853
Orange	758	1,056	245	811	449,779
Orleans	245	315	76	239	111,559
Oswego	575	806	176	630	298,616
Otsego	94	109	12	97	69,695
Putnam	43	46	8	38	28,389
Rensselaer	334	640	242	398	235,945
Rockland	286	419	113	306	182,375
St. Lawrence	451	659	154	505	187,211
Saratoga	129	139	24	115	77,113
Schenectady	454	615	140	475	279,232
Schoharie	76	86	15	71	45,515
Schuyler	93	125	32	93	44,721
Seneca	86	122	37	85	52,090
Steuben	387	487	87	400	207,933
Suffolk	3,908	4,924	796	4,128	3,650,456
Sullivan	183	229	54	175	109,030
Tioga	98	110	13	97	49,370
Tompkins	272	331	46	285	180,071
Ulster	631	876	182	694	538,850
Warren	68	72	3	69	55,348
Washington	141	173	37	136	118,066
Wayne	190	216	24	192	78,042
Westchester	1,342	1,619	196	1,423	1,621,983
Wyoming	65	70	4	66	26,520
Yates	53	71	16	55	21,990

Note: A breakout of Safety Net Assistance-FNP-Cash and Safety Net Assistance-FNP-Non-Cash data is not available for New York City.

* May include otherwise Temporary Assistance for Needy Families eligible or otherwise Safety Net Assistance MOE eligible non-disabled two-parent cases.

Table 13
SAFETY NET ASSISTANCE-FNP-CASH BY MAINTENANCE OF EFFORT STATUS
 Maintenance of Effort (MOE) vs. Non-Maintenance of Effort (Non-MOE)
 Cases, Recipients, Children, Adults and Expenditures by Local District
 December 2015

Local District	Maintenance of Effort (MOE)					Non-Maintenance of Effort (Non-MOE)*				
	Cases	Recipients	Children	Adults	Expenditures	Cases	Recipients	Children	Adults	Expenditures
New York State	See Note	See Note	See Note	See Note	See Note	See Note	See Note	See Note	See Note	See Note
New York City	See Note	See Note	See Note	See Note	See Note	See Note	See Note	See Note	See Note	See Note
Rest of State	1,323	4,379	2,926	1,453	\$1,154,813	33,374	44,874	8,944	35,930	\$19,489,399
Albany	30	102	68	34	28,719	895	1,293	313	980	653,349
Allegany	2	9	6	3	2,052	143	190	32	158	63,505
Broome	33	105	67	38	22,012	1,196	1,459	222	1,237	535,706
Cattaraugus	12	33	21	12	6,570	237	282	40	242	114,435
Cayuga	5	18	14	4	2,947	358	460	86	374	192,492
Chautauqua	26	77	47	30	17,091	765	1,078	223	855	311,831
Chemung	7	26	19	7	5,479	291	349	81	268	137,312
Chenango	3	12	9	3	2,300	156	183	33	150	66,595
Clinton	20	54	34	20	12,152	330	375	44	331	225,412
Columbia	4	13	9	4	3,108	136	170	25	145	59,873
Cortland	1	3	2	1	611	231	277	39	238	111,223
Delaware	0	0	0	0	0	84	98	8	90	35,620
Dutchess	31	106	75	31	31,101	343	390	74	316	210,863
Erie	221	711	475	236	140,899	4,529	7,315	2,079	5,236	1,935,626
Essex	0	0	0	0	0	45	46	3	43	21,850
Franklin	4	13	9	4	2,438	236	308	58	250	118,604
Fulton	0	0	0	0	0	109	119	17	102	44,978
Genesee	0	0	0	0	0	64	70	10	60	30,707
Greene	3	13	9	4	4,099	146	174	15	159	87,982
Hamilton	0	0	0	0	0	8	8	0	8	2,143
Herkimer	7	22	15	7	4,105	156	167	9	158	73,901
Jefferson	8	22	14	8	4,566	479	590	83	507	266,254
Lewis	0	0	0	0	0	26	31	6	25	13,030
Livingston	9	25	14	11	5,546	314	403	69	334	160,421
Madison	14	48	33	15	10,052	116	128	19	109	69,967
Monroe	225	740	499	241	164,838	3,583	4,587	784	3,803	1,646,600
Montgomery	6	19	13	6	4,016	131	188	37	151	68,811
Nassau	42	114	70	44	45,973	2,220	2,605	261	2,344	1,425,156
Niagara	36	115	72	43	22,497	880	1,084	157	927	347,375
Oneida	63	216	147	69	35,182	1,524	2,713	891	1,822	694,506
Onondaga	196	743	530	213	148,107	2,695	4,090	1,107	2,983	1,315,873
Ontario	1	5	3	2	1,635	300	344	39	305	154,218
Orange	38	129	86	43	32,403	720	927	159	768	417,376
Orleans	6	17	10	7	3,908	239	298	66	232	107,651
Oswego	10	25	15	10	9,741	565	781	161	620	288,875
Otsego	0	0	0	0	0	94	109	12	97	69,695
Putnam	1	2	1	1	396	42	44	7	37	27,993
Rensselaer	3	11	8	3	2,134	331	629	234	395	233,811
Rockland	4	14	9	5	2,654	282	405	104	301	179,721
St. Lawrence	13	32	18	14	6,215	438	627	136	491	180,996
Saratoga	0	0	0	0	0	129	139	24	115	77,113
Schenectady	8	16	8	8	4,377	446	599	132	467	274,855
Schoharie	0	0	0	0	0	76	86	15	71	45,515
Schuyler	5	16	9	7	2,909	88	109	23	86	41,812
Seneca	6	22	16	6	4,293	80	100	21	79	47,797
Steuben	2	2	0	2	436	385	485	87	398	207,497
Suffolk	142	528	353	175	282,220	3,766	4,396	443	3,953	3,368,236
Sullivan	2	6	4	2	1,388	181	223	50	173	107,642
Tioga	0	0	0	0	0	98	110	13	97	49,370
Tompkins	3	8	5	3	1,569	269	323	41	282	178,502
Ulster	10	28	16	12	7,837	621	848	166	682	531,013
Warren	0	0	0	0	0	68	72	3	69	55,348
Washington	3	12	9	3	1,848	138	161	28	133	116,218
Wayne	5	12	7	5	3,073	185	204	17	187	74,969
Westchester	52	130	74	56	58,533	1,290	1,489	122	1,367	1,563,450
Wyoming	1	5	4	1	784	64	65	0	65	25,736
Yates	0	0	0	0	0	53	71	16	55	21,990

Note: A breakout of Safety Net Assistance-FNP-Cash and Safety Net Assistance-FNP-Non-Cash data is not available for New York City.

* The Non-MOE category includes otherwise Temporary Assistance for Needy Families eligible or otherwise Safety Net Assistance MOE eligible non-disabled two-parent cases.

Table 14
SAFETY NET ASSISTANCE-FNP-NON-CASH TOTAL*
Cases, Recipients, Children, Adults and Expenditures by Local District
December 2015

Local District	Safety Net Assistance-FNP-Non-Cash Total				
	Cases	Recipients	Children	Adults	Expenditures
New York State	See Note	See Note	See Note	See Note	See Note
New York City	See Note	See Note	See Note	See Note	See Note
Rest of State	26,228	56,145	28,849	27,296	\$19,008,361
Albany	729	1,753	992	761	615,818
Allegany	121	211	88	123	77,660
Broome	948	1,920	955	965	578,349
Cattaraugus	128	162	44	118	84,449
Cayuga	167	307	135	172	109,624
Chautauqua	749	1,746	923	823	469,068
Chemung	80	141	60	81	51,754
Chenango	43	74	28	46	26,021
Clinton	115	175	59	116	74,499
Columbia	114	206	92	114	76,628
Cortland	158	213	51	162	101,735
Delaware	19	19	0	19	13,226
Dutchess	250	417	181	236	202,146
Erie	3,621	8,412	4,627	3,785	1,908,636
Essex	9	9	0	9	11,416
Franklin	106	198	85	113	57,012
Fulton	30	32	2	30	22,732
Genesee	74	122	49	73	52,954
Greene	98	183	89	94	62,137
Hamilton	2	2	0	2	437
Herkimer	98	170	69	101	58,981
Jefferson	254	365	108	257	159,952
Lewis	16	20	9	11	8,613
Livingston	111	220	103	117	65,165
Madison	59	93	33	60	27,160
Monroe	4,320	9,516	5,057	4,459	2,498,166
Montgomery	88	211	119	92	57,340
Nassau	1,880	3,830	1,879	1,951	1,506,641
Niagara	826	1,664	799	865	430,128
Oneida	908	2,471	1,478	993	527,032
Onondaga	1,077	3,048	1,915	1,133	654,986
Ontario	156	257	103	154	121,550
Orange	801	1,828	987	841	666,711
Orleans	170	290	116	174	94,798
Oswego	295	601	291	310	149,276
Otsego	27	28	4	24	28,296
Putnam	20	21	1	20	28,630
Rensselaer	339	1,119	736	383	223,321
Rockland	395	825	401	424	261,593
St. Lawrence	290	535	227	308	145,960
Saratoga	50	50	2	48	44,345
Schenectady	426	1,145	687	458	275,871
Schoharie	15	19	4	15	13,252
Schuyler	41	74	26	48	30,073
Seneca	51	97	47	50	28,611
Steuben	185	363	179	184	101,703
Suffolk	2,181	4,248	1,972	2,276	2,584,131
Sullivan	163	317	147	170	183,126
Tioga	33	54	26	28	23,434
Tompkins	210	361	148	213	116,545
Ulster	531	1,001	449	552	535,646
Warren	37	42	6	36	52,037
Washington	27	39	10	29	34,393
Wayne	112	150	44	106	53,274
Westchester	2,426	4,700	2,187	2,513	2,591,199
Wyoming	25	40	12	28	16,333
Yates	24	31	8	23	13,788

Note: A breakout of Safety Net Assistance-FNP-Cash and Safety Net Assistance-FNP-Non-Cash data is not available for New York City.

* May include otherwise Temporary Assistance for Needy Families eligible or otherwise Safety Net Assistance MOE eligible non-disabled two-parent cases.

Table 15
SAFETY NET ASSISTANCE-FNP-NON-CASH BY MAINTENANCE OF EFFORT STATUS
Maintenance of Effort (MOE) vs. Non-Maintenance of Effort (Non-MOE)
Cases, Recipients, Children, Adults and Expenditures by Local District
December 2015

Local District	Maintenance of Effort (MOE)					Non-Maintenance of Effort (Non-MOE)*				
	Cases	Recipients	Children	Adults	Expenditures	Cases	Recipients	Children	Adults	Expenditures
New York State	See Note	See Note	See Note	See Note	See Note	See Note	See Note	See Note	See Note	See Note
New York City	See Note	See Note	See Note	See Note	See Note	See Note	See Note	See Note	See Note	See Note
Rest of State	9,887	34,990	24,770	10,220	\$8,357,111	16,341	21,155	4,079	17,076	\$10,651,250
Albany	332	1,211	870	341	349,915	397	542	122	420	265,903
Allegany	36	115	78	37	23,874	85	96	10	86	53,786
Broome	312	1,092	768	324	227,747	636	828	187	641	350,602
Cattaraugus	11	41	31	10	9,045	117	121	13	108	75,404
Cayuga	53	169	113	56	33,585	114	138	22	116	76,039
Chautauqua	347	1,187	806	381	264,745	402	559	117	442	204,323
Chemung	20	64	45	19	12,047	60	77	15	62	39,707
Chenango	8	27	19	8	4,014	35	47	9	38	22,007
Clinton	22	70	46	24	11,971	93	105	13	92	62,528
Columbia	31	112	80	32	17,279	83	94	12	82	59,349
Cortland	24	66	42	24	13,772	134	147	9	138	87,963
Delaware	0	0	0	0	0	19	19	0	19	13,226
Dutchess	52	184	133	51	41,926	198	233	48	185	160,220
Erie	1,446	5,328	3,857	1,471	929,366	2,175	3,084	770	2,314	979,270
Essex	0	0	0	0	0	9	9	0	9	11,416
Franklin	29	96	67	29	17,028	77	102	18	84	39,984
Fulton	1	3	2	1	232	29	29	0	29	22,500
Genesee	14	51	38	13	10,834	60	71	11	60	42,120
Greene	38	118	83	35	18,417	60	65	6	59	43,720
Hamilton	0	0	0	0	0	2	2	0	2	437
Herkimer	25	86	60	26	15,671	73	84	9	75	43,310
Jefferson	34	111	78	33	19,654	220	254	30	224	140,298
Lewis	1	5	4	1	551	15	15	5	10	8,062
Livingston	40	129	86	43	24,101	71	91	17	74	41,064
Madison	11	43	31	12	6,444	48	50	2	48	20,716
Monroe	1,917	6,739	4,749	1,990	1,338,966	2,403	2,777	308	2,469	1,159,200
Montgomery	43	154	108	46	27,138	45	57	11	46	30,202
Nassau	750	2,425	1,662	763	778,461	1,130	1,405	217	1,188	728,180
Niagara	265	944	668	276	163,699	561	720	131	589	266,429
Oneida	407	1,621	1,192	429	241,307	501	850	286	564	285,725
Onondaga	516	2,009	1,487	522	334,716	561	1,039	428	611	320,270
Ontario	37	130	92	38	29,598	119	127	11	116	91,952
Orange	343	1,229	872	357	333,667	458	599	115	484	333,044
Orleans	42	144	101	43	31,517	128	146	15	131	63,281
Oswego	98	343	240	103	56,567	197	258	51	207	92,709
Otsego	0	0	0	0	0	27	28	4	24	28,296
Putnam	1	2	1	1	603	19	19	0	19	28,027
Rensselaer	238	872	621	251	145,691	101	247	115	132	77,630
Rockland	77	287	209	78	46,969	318	538	192	346	214,624
St. Lawrence	73	231	160	71	39,290	217	304	67	237	106,670
Saratoga	0	0	0	0	0	50	50	2	48	44,345
Schenectady	216	821	597	224	140,274	210	324	90	234	135,597
Schoharie	2	6	4	2	1,311	13	13	0	13	11,941
Schuyler	8	26	16	10	5,971	33	48	10	38	24,102
Seneca	15	50	34	16	6,864	36	47	13	34	21,747
Steuben	64	227	158	69	35,681	121	136	21	115	66,022
Suffolk	675	2,444	1,739	705	1,201,403	1,506	1,804	233	1,571	1,382,728
Sullivan	44	166	122	44	51,193	119	151	25	126	131,933
Tioga	9	27	21	6	5,591	24	27	5	22	17,843
Tompkins	46	165	117	48	23,380	164	196	31	165	93,165
Ulster	164	546	379	167	176,841	367	455	70	385	358,805
Warren	2	7	6	1	1,119	35	35	0	35	50,918
Washington	3	8	5	3	5,025	24	31	5	26	29,368
Wayne	12	39	28	11	8,274	100	111	16	95	45,000
Westchester	926	2,994	2,027	967	1,068,174	1,500	1,706	160	1,546	1,523,025
Wyoming	4	18	12	6	3,434	21	22	0	22	12,899
Yates	3	8	6	2	2,169	21	23	2	21	11,619

Note: A breakout of Safety Net Assistance-FNP-Cash and Safety Net Assistance-FNP-Non-Cash data is not available for New York City.

* The Non-MOE category includes otherwise Temporary Assistance for Needy Families eligible or otherwise Safety Net Assistance MOE eligible non-disabled two-parent cases.

Table 16
SUPPLEMENTAL NUTRITION ASSISTANCE PROGRAM
Households, Persons and Value of Supplemental Nutrition Assistance Program Benefits by Local District
December 2015

Local District	Total			Temporary Assistance			Non-Temporary Assistance		
	Households	Persons	SNAP Benefits	Households	Persons	SNAP Benefits	Households	Persons	SNAP Benefits
New York State	1,646,713	2,990,471	\$415,860,810	675,344	1,023,806	\$156,624,321	971,369	1,966,665	\$259,236,489
New York City	947,736	1,688,470	247,316,920	442,653	676,581	105,221,703	505,083	1,011,889	142,095,217
Rest of State	698,977	1,302,001	168,543,890	232,691	347,225	51,402,618	466,286	954,776	117,141,272
Albany	19,749	36,707	4,697,719	6,695	10,182	1,501,476	13,054	26,525	3,196,243
Allegany	3,245	6,116	721,350	1,180	1,643	240,497	2,065	4,473	480,853
Broome	17,148	31,416	4,065,423	6,924	10,671	1,635,026	10,224	20,745	2,430,397
Cattaraugus	6,487	12,446	1,475,320	1,835	2,336	356,458	4,652	10,110	1,118,862
Cayuga	5,536	10,514	1,310,235	1,651	2,483	370,666	3,885	8,031	939,569
Chautauqua	13,944	26,548	3,432,773	4,514	7,420	1,083,257	9,430	19,128	2,349,516
Chemung	8,066	15,706	2,041,158	2,234	2,827	435,528	5,832	12,879	1,605,630
Chenango	3,798	7,409	874,442	1,098	1,400	208,110	2,700	6,009	666,332
Clinton	6,749	11,526	1,421,030	2,427	3,073	466,465	4,322	8,453	954,565
Columbia	3,755	6,379	817,452	1,335	1,830	277,244	2,420	4,549	540,208
Cortland	3,724	6,694	826,932	1,172	1,655	252,086	2,552	5,039	574,846
Delaware	3,157	6,182	730,851	855	1,023	150,793	2,302	5,159	580,058
Dutchess	12,762	22,356	2,927,968	3,736	4,711	724,033	9,026	17,645	2,203,935
Erie	83,707	155,285	20,343,294	29,158	47,332	7,059,017	54,549	107,953	13,284,277
Essex	2,032	3,578	440,237	702	774	117,983	1,330	2,804	322,254
Franklin	4,130	7,460	954,073	1,564	2,090	321,057	2,566	5,370	633,016
Fulton	4,867	8,914	1,089,049	1,421	1,671	265,502	3,446	7,243	823,547
Genesee	3,189	5,814	690,493	926	1,233	183,736	2,263	4,581	506,757
Greene	3,207	5,609	732,827	1,085	1,453	222,882	2,122	4,156	509,945
Hamilton	228	380	45,999	61	71	11,580	167	309	34,419
Herkimer	5,309	9,879	1,176,539	1,311	1,684	258,669	3,998	8,195	917,870
Jefferson	8,360	15,648	1,932,023	2,499	3,402	520,010	5,861	12,246	1,412,013
Lewis	1,809	3,460	388,226	408	495	70,452	1,401	2,965	317,774
Livingston	3,813	6,994	881,337	1,350	2,062	312,485	2,463	4,932	568,852
Madison	4,479	8,619	1,064,669	1,059	1,384	210,075	3,420	7,235	854,594
Monroe	67,005	123,075	16,313,750	27,020	43,852	6,439,512	39,985	79,223	9,874,238
Montgomery	4,785	9,763	1,221,098	1,512	2,303	337,310	3,273	7,460	883,788
Nassau	40,195	64,381	8,322,806	16,156	22,191	3,245,110	24,039	42,190	5,077,696
Niagara	17,863	31,908	4,118,148	5,896	8,776	1,330,570	11,967	23,132	2,787,578
Oneida	20,161	40,675	5,101,299	7,972	13,938	1,993,993	12,189	26,737	3,107,306
Onondaga	38,599	73,616	9,470,218	13,407	22,531	3,239,626	25,192	51,085	6,230,592
Ontario	5,460	9,730	1,193,169	1,733	2,370	363,785	3,727	7,360	829,384
Orange	19,772	46,145	5,972,477	6,117	9,143	1,327,914	13,655	37,002	4,644,563
Orleans	3,176	6,102	729,837	1,077	1,639	247,125	2,099	4,463	482,712
Oswego	9,617	19,720	2,419,591	3,008	4,962	723,819	6,609	14,758	1,695,772
Otsego	3,239	5,971	707,152	874	985	155,460	2,365	4,986	551,692
Putnam	1,711	2,693	345,815	515	561	84,500	1,196	2,132	261,315
Rensselaer	8,962	17,732	2,189,009	3,388	6,032	819,277	5,574	11,700	1,369,732
Rockland	16,809	46,950	6,081,324	4,004	5,376	818,959	12,805	41,574	5,262,365
St. Lawrence	8,373	16,208	1,950,518	3,026	4,286	622,931	5,347	11,922	1,327,587
Saratoga	8,585	14,880	1,814,035	1,934	2,127	340,498	6,651	12,753	1,473,537
Schenectady	12,787	23,873	3,229,588	4,614	7,005	1,031,737	8,173	16,868	2,197,851
Schoharie	2,050	3,711	455,950	550	691	106,665	1,500	3,020	349,285
Schuyler	1,252	2,434	290,050	355	551	83,977	897	1,883	206,073
Seneca	1,820	3,390	421,342	605	857	125,292	1,215	2,533	296,050
Steuben	5,945	11,857	1,376,372	1,996	2,846	411,599	3,949	9,011	964,773
Suffolk	75,693	129,140	17,829,715	21,427	29,832	4,486,783	54,266	99,308	13,342,932
Sullivan	6,525	12,901	1,664,095	1,947	2,616	377,068	4,578	10,285	1,287,027
Tioga	3,086	6,246	722,549	814	1,114	164,023	2,272	5,132	558,526
Tompkins	5,018	8,793	1,127,324	1,510	2,096	318,357	3,508	6,697	808,967
Ulster	11,910	21,027	2,777,749	4,122	5,864	902,390	7,788	15,163	1,875,359
Warren	4,067	7,357	889,083	1,089	1,252	194,920	2,978	6,105	694,163
Washington	4,050	7,640	918,644	1,053	1,355	206,183	2,997	6,285	712,461
Wayne	5,616	10,298	1,213,698	1,717	2,215	336,694	3,899	8,083	877,004
Westchester	48,481	86,436	11,929,544	15,136	21,790	3,136,948	33,345	64,646	8,792,596
Wyoming	1,681	3,048	347,995	523	682	101,136	1,158	2,366	246,859
Yates	1,434	2,662	318,527	394	482	73,370	1,040	2,180	245,157

Note: Supplemental Nutrition Assistance Program households containing only Supplemental Security Income recipients or a mix of Temporary Assistance and Supplemental Security Income recipients are counted as Temporary Assistance.

Table 17
SUPPLEMENTAL SECURITY INCOME
 Recipients, Total Program Expenditures and Federal and State Shares, by Local District
 December 2015

Local District	Recipients	Expenditures		
		Total	Federal	State
New York State*	705,747	\$414,989,679	\$363,745,845	\$51,243,834
New York City	425,442	253,258,842	223,925,985	29,332,857
Rest of State	275,788	159,631,146	138,363,883	21,267,263
Albany	7,433	4,285,853	3,779,445	506,408
Allegany	1,564	861,612	748,540	113,072
Broome	7,323	4,410,969	3,958,681	452,288
Cattaraugus	2,640	1,453,956	1,264,940	189,016
Cayuga	1,984	1,130,975	968,878	162,097
Chautauqua	5,083	2,866,298	2,500,162	366,136
Chemung	3,536	2,002,290	1,763,365	238,925
Chenango	1,629	893,944	794,305	99,639
Clinton	3,116	1,771,459	1,541,125	230,334
Columbia	1,696	1,026,283	840,398	185,885
Cortland	1,284	717,229	622,198	95,031
Delaware	1,321	714,076	610,645	103,431
Dutchess	5,976	3,438,512	2,816,082	622,430
Erie	30,479	18,106,708	15,934,466	2,172,242
Essex	1,099	649,555	515,554	134,001
Franklin	1,844	1,043,654	882,209	161,445
Fulton	2,289	1,302,281	1,099,724	202,557
Genesee	1,300	722,260	604,443	117,817
Greene	1,510	860,778	752,509	108,269
Hamilton	71	33,476	28,848	4,628
Herkimer	1,806	976,576	839,680	136,896
Jefferson	3,025	1,686,423	1,459,098	227,325
Lewis	629	346,666	307,065	39,601
Livingston	1,312	767,615	694,219	73,396
Madison	1,458	817,372	713,827	103,545
Monroe	27,656	17,091,407	15,176,353	1,915,054
Montgomery	2,072	1,221,664	1,065,096	156,568
Nassau	19,190	10,656,015	8,994,209	1,661,806
Niagara	6,388	3,685,972	3,221,241	464,731
Oneida	8,818	5,160,495	4,564,984	595,511
Onondaga	15,400	9,456,481	8,484,009	972,472
Ontario	2,029	1,065,615	929,513	136,102
Orange	7,390	4,212,886	3,633,382	579,504
Orleans	1,046	593,846	526,452	67,394
Oswego	3,539	2,104,909	1,909,200	195,709
Otsego	1,526	899,318	755,834	143,484
Putnam	927	487,106	398,186	88,920
Rensselaer	4,828	2,884,497	2,484,951	399,546
Rockland	5,592	3,195,008	2,457,739	737,269
St. Lawrence	4,064	2,354,899	2,091,601	263,298
Saratoga	3,168	1,677,819	1,451,240	226,579
Schenectady	5,965	3,685,817	3,288,425	397,392
Schoharie	746	421,684	346,630	75,054
Schuyler	474	260,738	212,149	48,589
Seneca	846	464,816	407,102	57,714
Steuben	3,215	1,836,234	1,638,168	198,066
Suffolk	23,147	13,037,580	10,937,482	2,100,098
Sullivan	2,826	1,577,764	1,283,146	294,618
Tioga	1,233	700,546	622,053	78,493
Tompkins	1,691	960,027	821,217	138,810
Ulster	4,518	2,537,099	2,160,477	376,622
Warren	1,743	972,341	841,474	130,867
Washington	1,754	994,953	869,034	125,919
Wayne	2,300	1,291,944	1,148,178	143,766
Westchester	19,029	10,542,252	8,984,540	1,557,712
Wyoming	715	406,077	359,822	46,255
Yates	546	306,517	259,590	46,927
Mental Hygiene	4,517	2,099,691	1,455,977	643,714

* Only New York State includes Mental Hygiene

Table 18
SUPPLEMENTAL SECURITY INCOME
 Recipients by Living Arrangement and Location
 December 2015

Living Arrangement	New York State	New York City	Rest of State	Mental Hygiene
Living Alone	335,711	218,622	117,089	0
Living With Others	280,961	162,891	118,064	6
Living in Household of Another	28,991	17,495	11,495	1
Congregate Care Level 1	2,446	279	551	1,616
Congregate Care Level 2	26,535	9,736	15,961	838
Congregate Care Level 3	12,844	6,478	6,365	1
Title XIX Institution	12,860	7,957	4,378	525
Other*	5,399	2,069	1,885	1,445
Total	705,747	425,527	275,788	4,432

Table 19
SUPPLEMENTAL SECURITY INCOME
 Recipients by Living Arrangement and Category of Assistance
 December 2015

Living Arrangement	Total	Category of Assistance		
		Aged	Blind	Disabled
Living Alone	335,711	95,384	1,244	239,083
Living With Others	280,961	26,446	1,267	253,248
Living in Household of Another	28,991	8,244	220	20,527
Congregate Care Level 1	2,446	268	12	2,166
Congregate Care Level 2	26,535	1,550	88	24,897
Congregate Care Level 3	12,844	5,078	31	7,735
Title XIX Institution & Other*	18,259	2,822	89	15,348
Total	705,747	139,792	2,951	563,004

* "Other" includes recipients either a) residing in a private medical facility and Medicaid is paying for less than 50% of the cost of care, b) residing in certain publicly operated residential facilities serving 16 or fewer residents, or c) residing in a public emergency shelter for six calendar months during a nine month period. Such cases receive no state Supplemental Security Income supplement.

Table 20
CHILD SUPPORT COLLECTIONS (IV-D)
December 2015

Local District	Total	Current Assistance	Former Assistance	Never Assistance
New York State	\$157,681,150.00	\$5,938,984.71	\$78,192,814.90	\$73,549,350.42
New York City	65,264,902.34	2,863,957.14	33,408,285.85	28,992,659.35
Rest of State	92,416,247.69	3,075,027.57	44,784,529.05	44,556,691.07
Albany	2,508,684.90	73,221.78	1,046,405.36	1,389,057.76
Allegany	496,868.72	24,246.70	326,967.48	145,654.54
Broome	1,398,006.61	84,641.51	758,279.02	555,086.08
Cattaraugus	857,055.55	32,143.43	499,286.48	325,625.64
Cayuga	790,680.22	32,639.39	457,005.94	301,034.89
Chautauqua	1,200,143.10	63,309.96	767,586.63	369,246.51
Chemung	749,952.56	27,903.05	442,164.96	279,884.55
Chenango	435,097.03	23,931.63	246,527.91	164,637.49
Clinton	830,069.92	48,129.20	407,515.82	374,424.90
Columbia	474,840.45	17,619.40	246,648.57	210,572.48
Cortland	418,287.22	17,996.56	242,078.58	158,212.08
Delaware	447,043.17	17,810.10	314,867.46	114,365.61
Dutchess	2,653,094.02	45,941.89	1,030,861.22	1,576,290.91
Erie	6,847,784.04	330,081.52	3,727,550.01	2,790,152.51
Essex	298,949.41	6,954.02	159,088.17	132,907.22
Franklin	462,234.40	13,415.25	240,085.18	208,733.97
Fulton	539,496.19	13,698.89	361,517.30	164,280.00
Genesee	544,214.98	9,624.67	294,519.51	240,070.80
Greene	399,610.80	11,355.11	215,746.91	172,508.78
Hamilton	23,511.88	744.13	12,971.17	9,796.58
Herkimer	539,654.67	16,822.53	319,219.72	203,612.42
Jefferson	1,341,428.81	51,864.10	570,038.72	719,525.99
Lewis	367,247.33	7,471.72	246,908.41	112,867.20
Livingston	597,531.33	33,543.63	339,480.59	224,507.11
Madison	506,323.64	17,085.40	268,536.92	220,701.32
Monroe	6,029,635.22	276,618.19	3,288,299.66	2,464,717.37
Montgomery	516,379.07	28,824.63	337,425.78	150,128.66
Nassau	9,105,458.29	163,765.08	3,543,319.81	5,398,373.40
Niagara	1,716,135.23	92,096.29	1,069,257.41	554,781.53
Oneida	1,623,469.84	95,004.00	970,157.97	558,307.87
Onondaga	3,926,101.76	131,000.35	2,225,272.59	1,569,828.82
Ontario	1,041,316.33	44,946.31	555,617.56	440,752.46
Orange	3,544,652.64	86,285.02	1,364,364.22	2,094,003.40
Orleans	374,270.90	21,304.41	231,758.12	121,208.37
Oswego	1,121,941.51	48,701.10	672,483.31	400,757.10
Otsego	417,361.93	7,203.46	199,929.21	210,229.26
Putnam	684,609.62	7,519.27	227,673.69	449,416.66
Rensselaer	1,658,977.70	79,917.57	688,239.02	890,821.11
Rockland	2,354,542.32	49,921.08	973,635.14	1,330,986.10
St. Lawrence	1,089,719.95	37,535.23	678,880.29	373,304.43
Saratoga	1,734,143.97	19,962.28	752,602.76	961,578.93
Schenectady	1,397,324.13	47,729.92	612,786.80	736,807.41
Schoharie	304,938.94	11,154.41	168,255.20	125,529.33
Schuyler	172,856.77	7,004.83	114,362.27	51,489.67
Seneca	310,284.90	12,471.15	163,631.84	134,181.91
Steuben	974,228.43	37,733.35	592,047.26	344,447.82
Suffolk	13,673,469.06	350,524.02	6,205,290.26	7,117,654.78
Sullivan	706,079.84	26,256.63	355,108.39	324,714.82
Tioga	455,189.84	23,401.37	268,316.65	163,471.82
Tompkins	618,701.15	30,640.80	299,546.10	288,514.25
Ulster	1,611,055.15	69,292.86	790,852.96	750,909.33
Warren	826,799.16	16,755.77	418,603.75	391,439.64
Washington	649,392.27	23,103.64	346,145.51	280,143.12
Wayne	921,883.32	25,256.23	445,946.39	450,680.70
Westchester	6,536,154.17	154,188.54	2,380,449.20	4,001,516.43
Wyoming	404,521.98	17,067.82	193,576.57	193,877.59
Yates	186,841.35	9,646.39	108,835.32	68,359.64

Table 21
AGGREGATE CLAIMS
TOTAL TEMPORARY ASSISTANCE
Family Assistance and Safety Net Assistance
December 2015

Month	New York State			New York City			Rest of State		
	Recipients	Net Expenditures	Monthly Average Payment	Recipients	Net Expenditures	Monthly Average Payment	Recipients	Net Expenditures	Monthly Average Payment
January 2014	560,991	\$214,034,507	\$381.53	333,708	\$146,731,005	\$439.70	227,283	\$67,303,502	\$296.12
February 2014	561,525	\$210,098,286	\$374.16	333,162	\$140,749,161	\$422.46	228,363	\$69,349,125	\$303.68
March 2014	566,456	\$228,168,831	\$402.80	334,732	\$155,317,544	\$464.01	231,724	\$72,851,287	\$314.39
April 2014	565,463	\$226,859,192	\$401.19	332,074	\$151,598,291	\$456.52	233,389	\$75,260,901	\$322.47
May 2014	564,612	\$219,689,737	\$389.10	330,872	\$144,710,332	\$437.36	233,740	\$74,979,405	\$320.78
June 2014	563,201	\$223,682,858	\$397.16	331,315	\$151,675,137	\$457.80	231,886	\$72,007,721	\$310.53
July 2014	562,676	\$213,011,582	\$378.57	331,407	\$143,826,733	\$433.99	231,269	\$69,184,849	\$299.15
August 2014	565,719	\$204,522,862	\$361.53	336,383	\$135,173,840	\$401.85	229,336	\$69,349,022	\$302.39
September 2014	567,809	\$227,631,174	\$400.89	339,380	\$158,726,208	\$467.69	228,429	\$68,904,966	\$301.65
October 2014	571,842	\$243,254,336	\$425.39	339,804	\$170,325,629	\$501.25	232,038	\$72,928,707	\$314.30
November 2014	566,688	\$206,226,591	\$363.92	341,498	\$142,024,104	\$415.89	225,190	\$64,202,487	\$285.10
December 2014	573,328	\$295,716,201	\$515.79	344,154	\$219,794,242	\$638.65	229,174	\$75,921,959	\$331.29
January 2015	569,551	\$253,499,500	\$445.09	343,400	\$184,987,118	\$538.69	226,151	\$68,512,382	\$302.95
February 2015	570,637	\$219,308,988	\$384.32	346,155	\$152,246,046	\$439.82	224,482	\$67,062,942	\$298.75
March 2015	577,132	\$236,980,733	\$410.62	349,639	\$162,425,660	\$464.55	227,493	\$74,555,073	\$327.72
April 2015	575,508	\$230,158,671	\$399.92	349,039	\$158,568,220	\$454.30	226,469	\$71,590,451	\$316.12
May 2015	573,167	\$219,539,899	\$383.03	350,112	\$149,863,337	\$428.04	223,055	\$69,676,562	\$312.37
June 2015	573,775	\$221,367,377	\$385.81	351,701	\$152,451,203	\$433.47	222,074	\$68,916,174	\$310.33
July 2015	573,450	\$218,605,612	\$381.21	352,855	\$150,264,804	\$425.85	220,595	\$68,340,808	\$309.80
August 2015	572,799	\$204,722,474	\$357.41	355,100	\$139,941,444	\$394.09	217,699	\$64,781,030	\$297.57
September 2015	573,074	\$212,612,737	\$371.00	357,047	\$147,066,548	\$411.90	216,027	\$65,546,189	\$303.42
October 2015	578,030	\$223,407,569	\$386.50	361,421	\$156,899,051	\$434.12	216,609	\$66,508,518	\$307.04
November 2015	571,591	\$215,877,966	\$377.68	358,322	\$151,749,736	\$423.50	213,269	\$64,128,230	\$300.69
December 2015	574,037	\$174,322,671	\$303.68	360,398	\$118,046,072	\$327.54	213,639	\$56,276,599	\$263.42

Note: Data pursuant to a New York State Legislative mandate S. 6057-B/A. 9557-B, Chapter 57, L. 2004.

Based on local district claims submitted on claims Schedules A and C. Includes reimbursable expenditures for basic assistance, rent supplements, family shelters, domestic violence shelters, security deposits, transitional services, diversion transportation, diversion payments, and other non-assistance. These claims are net of cancellations and refunds, and include any reconciliations and supplemental claims applied to the month after initial expenditure reporting is done. Thus, these data differ from the expenditure data presented elsewhere in this document, which are derived from original payment issuance activity during the month, net of cancellations and refunds in that month.

District claiming activity for recent months is generally not complete before the statutorily required due date for this report. Thus, claims for recent months may appear substantially below those for earlier months. Claims tables in future months of this report will continue to include the historical periods above, adjusted for claiming activity occurring subsequent to this report.

Table 22
AGGREGATE CLAIMS
FEDERALLY PARTICIPATING - TANF
Family Assistance-FP and Safety Net Assistance-FP
December 2015

Month	New York State			New York City			Rest of State		
	Recipients	Net Expenditures	Monthly Average Payment	Recipients	Net Expenditures	Monthly Average Payment	Recipients	Net Expenditures	Monthly Average Payment
January 2014	256,124	\$92,822,352	\$362.41	137,459	\$59,856,956	\$435.45	118,665	\$32,965,396	\$277.80
February 2014	255,541	\$89,422,412	\$349.93	136,833	\$56,115,950	\$410.11	118,708	\$33,306,462	\$280.57
March 2014	255,898	\$100,952,077	\$394.50	136,966	\$65,683,012	\$479.56	118,932	\$35,269,065	\$296.55
April 2014	253,936	\$97,135,029	\$382.52	134,985	\$61,105,554	\$452.68	118,951	\$36,029,475	\$302.89
May 2014	253,505	\$92,440,031	\$364.65	134,113	\$57,980,291	\$432.32	119,392	\$34,459,740	\$288.63
June 2014	253,465	\$101,579,583	\$400.76	134,148	\$67,116,281	\$500.32	119,317	\$34,463,302	\$288.84
July 2014	252,643	\$86,880,628	\$343.89	133,462	\$53,597,492	\$401.59	119,181	\$33,283,136	\$279.27
August 2014	254,875	\$83,867,022	\$329.05	136,240	\$50,504,032	\$370.70	118,635	\$33,362,990	\$281.22
September 2014	254,656	\$99,973,439	\$392.58	136,630	\$66,244,980	\$484.85	118,026	\$33,728,459	\$285.77
October 2014	255,720	\$104,840,640	\$409.98	136,355	\$69,873,173	\$512.44	119,365	\$34,967,467	\$292.95
November 2014	255,842	\$86,424,571	\$337.80	139,293	\$55,125,642	\$395.75	116,549	\$31,298,929	\$268.55
December 2014	254,126	\$113,433,127	\$446.37	137,103	\$77,034,245	\$561.87	117,023	\$36,398,882	\$311.04
January 2015	251,342	\$107,431,110	\$427.43	136,237	\$74,910,192	\$549.85	115,105	\$32,520,918	\$282.53
February 2015	250,234	\$88,902,237	\$355.28	136,216	\$57,298,669	\$420.65	114,018	\$31,603,568	\$277.18
March 2015	251,794	\$101,350,721	\$402.51	137,283	\$66,515,785	\$484.52	114,511	\$34,834,936	\$304.21
April 2015	248,893	\$92,265,661	\$370.70	135,267	\$59,547,538	\$440.22	113,626	\$32,718,123	\$287.95
May 2015	248,133	\$89,716,201	\$361.56	136,046	\$57,289,140	\$421.10	112,087	\$32,427,061	\$289.30
June 2015	247,686	\$95,661,384	\$386.22	135,971	\$63,269,004	\$465.31	111,715	\$32,392,380	\$289.96
July 2015	247,654	\$87,356,550	\$352.74	136,308	\$55,292,868	\$405.65	111,346	\$32,063,682	\$287.96
August 2015	246,643	\$80,175,837	\$325.07	136,286	\$49,399,587	\$362.47	110,357	\$30,776,250	\$278.88
September 2015	247,329	\$85,102,022	\$344.08	137,716	\$53,879,715	\$391.24	109,613	\$31,222,307	\$284.84
October 2015	249,057	\$89,426,673	\$359.06	138,939	\$57,571,781	\$414.37	110,118	\$31,854,892	\$289.28
November 2015	246,296	\$88,287,140	\$358.46	138,047	\$57,710,814	\$418.05	108,249	\$30,576,326	\$282.46
December 2015	246,098	\$73,834,438	\$300.02	137,857	\$48,175,715	\$349.46	108,241	\$25,658,723	\$237.05

Note: Data pursuant to a New York State Legislative mandate S. 6057-B/A. 9557-B, Chapter 57, L. 2004.

Based on local district claims submitted on claims Schedules A and C. Includes reimbursable expenditures for basic assistance, rent supplements, family shelters, domestic violence shelters, security deposits, transitional services, diversion transportation, diversion payments, and other non-assistance. These claims are net of cancellations and refunds, and include any reconciliations and supplemental claims applied to the month after initial expenditure reporting is done. Thus, these data differ from the expenditure data presented elsewhere in this document, which are derived from original payment issuance activity during the month, net of cancellations and refunds in that month.

District claiming activity for recent months is generally not complete before the statutorily required due date for this report. Thus, claims for recent months may appear substantially below those for earlier months. Claims tables in future months of this report will continue to include the historical periods above, adjusted for claiming activity occurring subsequent to this report.

Table 23
AGGREGATE CLAIMS
FEDERALLY NON-PARTICIPATING
Safety Net Assistance-FNP Maintenance of Effort
December 2015

Month	New York State			New York City			Rest of State		
	Recipients	Net Expenditures	Monthly Average Payment	Recipients	Net Expenditures	Monthly Average Payment	Recipients	Net Expenditures	Monthly Average Payment
January 2014	116,278	\$34,146,338	\$293.66	77,255	\$25,344,805	\$328.07	39,023	\$8,801,533	\$225.55
February 2014	116,505	\$31,249,687	\$268.23	77,327	\$22,124,863	\$286.12	39,178	\$9,124,824	\$232.91
March 2014	117,670	\$41,094,156	\$349.23	78,426	\$31,555,885	\$402.37	39,244	\$9,538,271	\$243.05
April 2014	114,869	\$35,803,039	\$311.69	75,862	\$25,646,627	\$338.07	39,007	\$10,156,412	\$260.37
May 2014	114,478	\$33,507,779	\$292.70	75,265	\$24,181,272	\$321.28	39,213	\$9,326,507	\$237.84
June 2014	114,786	\$38,909,832	\$338.98	75,107	\$29,713,919	\$395.62	39,679	\$9,195,913	\$231.76
July 2014	114,537	\$32,490,337	\$283.67	74,604	\$23,371,909	\$313.28	39,933	\$9,118,428	\$228.34
August 2014	116,548	\$29,347,170	\$251.80	77,266	\$20,625,986	\$266.95	39,282	\$8,721,184	\$222.01
September 2014	117,457	\$39,794,520	\$338.80	77,600	\$30,949,827	\$398.84	39,857	\$8,844,693	\$221.91
October 2014	117,954	\$36,920,579	\$313.01	77,641	\$27,254,967	\$351.04	40,313	\$9,665,612	\$239.76
November 2014	116,448	\$31,064,132	\$266.76	76,629	\$22,565,979	\$294.48	39,819	\$8,498,153	\$213.42
December 2014	121,796	\$57,862,779	\$475.08	80,895	\$48,437,391	\$598.77	40,901	\$9,425,388	\$230.44
January 2015	120,097	\$43,742,063	\$364.22	79,585	\$34,571,287	\$434.39	40,512	\$9,170,776	\$226.37
February 2015	122,369	\$34,736,336	\$283.87	82,108	\$25,627,840	\$312.12	40,261	\$9,108,496	\$226.24
March 2015	121,592	\$42,725,935	\$351.39	81,214	\$32,916,088	\$405.30	40,378	\$9,809,847	\$242.95
April 2015	121,779	\$36,466,493	\$299.45	81,603	\$26,620,651	\$326.22	40,176	\$9,845,842	\$245.07
May 2015	122,015	\$33,591,105	\$275.30	82,123	\$24,140,499	\$293.96	39,892	\$9,450,606	\$236.90
June 2015	122,737	\$40,053,265	\$326.33	82,813	\$31,055,912	\$375.01	39,924	\$8,997,353	\$225.36
July 2015	122,406	\$34,354,172	\$280.66	82,218	\$25,254,747	\$307.17	40,188	\$9,099,425	\$226.42
August 2015	125,311	\$30,740,111	\$245.31	85,637	\$21,965,870	\$256.50	39,674	\$8,774,241	\$221.16
September 2015	124,711	\$37,841,895	\$303.44	85,244	\$28,831,262	\$338.22	39,467	\$9,010,633	\$228.31
October 2015	125,581	\$33,970,289	\$270.51	86,021	\$24,620,067	\$286.21	39,560	\$9,350,222	\$236.36
November 2015	125,942	\$33,163,991	\$263.33	86,629	\$24,338,329	\$280.95	39,313	\$8,825,662	\$224.50
December 2015	126,515	\$36,399,648	\$287.71	87,146	\$28,306,640	\$324.82	39,369	\$8,093,008	\$205.57

Note: Data pursuant to a New York State Legislative mandate S. 6057-B/A. 9557-B, Chapter 57, L. 2004.

Based on local district claims submitted on claims Schedules A and C. Includes reimbursable expenditures for basic assistance, rent supplements, family shelters, domestic violence shelters, security deposits, transitional services, diversion transportation, diversion payments, and other non-assistance. These claims are net of cancellations and refunds, and include any reconciliations and supplemental claims applied to the month after initial expenditure reporting is done. Thus, these data differ from the expenditure data presented elsewhere in this document, which are derived from original payment issuance activity during the month, net of cancellations and refunds in that month.

District claiming activity for recent months is generally not complete before the statutorily required due date for this report. Thus, claims for recent months may appear substantially below those for earlier months. Claims tables in future months of this report will continue to include the historical periods above, adjusted for claiming activity occurring subsequent to this report.

Table 24
AGGREGATE CLAIMS
FEDERALLY NON-PARTICIPATING
Safety Net Assistance-FNP and Family Assistance-FNP Non-Maintenance of Effort
December 2015

Month	New York State			New York City			Rest of State		
	Recipients	Net Expenditures	Monthly Average Payment	Recipients	Net Expenditures	Monthly Average Payment	Recipients	Net Expenditures	Monthly Average Payment
January 2014	188,589	\$87,065,817	\$461.67	118,994	\$61,529,244	\$517.08	69,595	\$25,536,573	\$366.93
February 2014	189,479	\$89,426,187	\$471.96	119,002	\$62,508,348	\$525.27	70,477	\$26,917,839	\$381.94
March 2014	192,888	\$86,122,598	\$446.49	119,340	\$58,078,647	\$486.67	73,548	\$28,043,951	\$381.30
April 2014	196,658	\$93,921,124	\$477.59	121,227	\$64,846,110	\$534.91	75,431	\$29,075,014	\$385.45
May 2014	196,629	\$93,741,927	\$476.75	121,494	\$62,548,769	\$514.83	75,135	\$31,193,158	\$415.16
June 2014	194,950	\$83,193,443	\$426.74	122,060	\$54,844,937	\$449.33	72,890	\$28,348,506	\$388.92
July 2014	195,496	\$93,640,617	\$478.99	123,341	\$66,857,332	\$542.05	72,155	\$26,783,285	\$371.19
August 2014	194,296	\$91,308,670	\$469.95	122,877	\$64,043,822	\$521.20	71,419	\$27,264,848	\$381.76
September 2014	195,696	\$87,863,215	\$448.98	125,150	\$61,531,401	\$491.66	70,546	\$26,331,814	\$373.26
October 2014	198,168	\$101,493,117	\$512.16	125,808	\$73,197,489	\$581.82	72,360	\$28,295,628	\$391.04
November 2014	194,398	\$88,737,888	\$456.48	125,576	\$64,332,483	\$512.30	68,822	\$24,405,405	\$354.62
December 2014	197,406	\$124,420,295	\$630.28	126,156	\$94,322,606	\$747.67	71,250	\$30,097,689	\$422.42
January 2015	198,112	\$102,326,327	\$516.51	127,578	\$75,505,639	\$591.84	70,534	\$26,820,688	\$380.25
February 2015	198,034	\$95,670,415	\$483.10	127,831	\$69,319,537	\$542.27	70,203	\$26,350,878	\$375.35
March 2015	203,746	\$92,904,077	\$455.98	131,142	\$62,993,787	\$480.35	72,604	\$29,910,290	\$411.96
April 2015	204,836	\$101,426,517	\$495.16	132,169	\$72,400,031	\$547.78	72,667	\$29,026,486	\$399.45
May 2015	203,019	\$96,232,593	\$474.01	131,943	\$68,433,698	\$518.66	71,076	\$27,798,895	\$391.12
June 2015	203,352	\$85,652,728	\$421.20	132,917	\$58,126,287	\$437.31	70,435	\$27,526,441	\$390.81
July 2015	203,390	\$96,894,890	\$476.40	134,329	\$69,717,189	\$519.00	69,061	\$27,177,701	\$393.53
August 2015	200,845	\$93,806,526	\$467.06	133,177	\$68,575,987	\$514.92	67,668	\$25,230,539	\$372.86
September 2015	201,034	\$89,668,820	\$446.04	134,087	\$64,355,571	\$479.95	66,947	\$25,313,249	\$378.11
October 2015	203,392	\$100,010,607	\$491.71	136,461	\$74,707,203	\$547.46	66,931	\$25,303,404	\$378.05
November 2015	199,353	\$94,426,835	\$473.67	133,646	\$69,700,593	\$521.53	65,707	\$24,726,242	\$376.31
December 2015	201,424	\$64,088,585	\$318.18	135,395	\$41,563,717	\$306.98	66,029	\$22,524,868	\$341.14

Note: Data pursuant to a New York State Legislative mandate S. 6057-B/A. 9557-B, Chapter 57, L. 2004.

Based on local district claims submitted on claims Schedules A and C. Includes reimbursable expenditures for basic assistance, rent supplements, family shelters, domestic violence shelters, security deposits, transitional services, diversion transportation, diversion payments, and other non-assistance. These claims are net of cancellations and refunds, and include any reconciliations and supplemental claims applied to the month after initial expenditure reporting is done. Thus, these data differ from the expenditure data presented elsewhere in this document, which are derived from original payment issuance activity during the month, net of cancellations and refunds in that month.

District claiming activity for recent months is generally not complete before the statutorily required due date for this report. Thus, claims for recent months may appear substantially below those for earlier months. Claims tables in future months of this report will continue to include the historical periods above, adjusted for claiming activity occurring subsequent to this report.

Table 25
HOME ENERGY ASSISTANCE PROGRAM*
Number and Dollar Amount of Benefits Authorized and Administrative Allocations - Federal Fiscal Year to Date
December 2015

Local District	Benefits Authorized		Administrative Allocations
	Number	Dollar Amount	
New York State	586,833	\$168,317,154	\$18,062,458
New York City	26,985	10,444,472	3,856,659
Rest of State	559,848	157,872,682	14,205,799
Albany	16,341	3,527,278	250,974
Allegany	3,573	1,479,496	137,588
Broome	14,274	4,204,688	358,933
Cattaraugus	6,824	2,505,381	228,985
Cayuga	4,855	1,735,371	160,390
Chautauqua	12,120	4,068,311	339,091
Chemung	7,057	1,827,278	161,127
Chenango	4,054	1,820,878	160,963
Clinton	6,634	3,133,139	284,412
Columbia	3,659	1,284,675	108,980
Cortland	3,436	1,134,513	102,844
Delaware	3,701	1,660,137	146,412
Dutchess	11,086	2,611,683	236,691
Erie	74,078	20,936,454	2,452,379
Essex	2,237	1,021,343	85,157
Franklin	4,464	1,943,997	197,927
Fulton	4,870	1,917,588	181,736
Genesee	2,984	936,033	79,504
Greene	3,315	1,335,984	134,093
Hamilton	295	127,963	11,271
Herkimer	5,387	1,993,543	189,867
Jefferson	7,665	2,664,071	221,034
Lewis	1,900	927,168	87,498
Livingston	3,430	1,284,771	108,637
Madison	3,877	1,438,128	149,260
Monroe	52,343	11,618,347	765,529
Montgomery	4,627	1,669,816	147,912
Nassau	21,359	3,354,827	196,084
Niagara	15,782	4,369,204	397,195
Oneida	18,417	5,847,335	582,647
Onondaga	30,184	7,478,195	556,319
Ontario	5,135	1,519,302	130,458
Orange	14,171	3,650,324	349,006
Orleans	2,746	1,135,894	97,764
Oswego	7,610	3,062,752	228,635
Otsego	3,404	1,477,266	152,672
Putnam	1,505	424,440	36,006
Rensselaer	8,021	2,383,242	194,429
Rockland	12,043	2,169,980	169,503
St. Lawrence	8,324	3,467,932	362,124
Saratoga	7,433	2,799,200	274,108
Schenectady	9,746	2,515,630	167,500
Schoharie	2,170	1,022,809	95,033
Schuyler	1,439	678,325	60,309
Seneca	1,845	599,815	62,954
Steuben	6,254	2,322,498	261,532
Suffolk	38,314	10,403,815	803,627
Sullivan	5,788	1,982,450	189,980
Tioga	3,110	1,440,273	128,346
Tompkins	4,519	1,138,752	105,197
Ulster	11,437	3,613,270	374,540
Warren	4,079	1,532,857	138,382
Washington	3,710	1,617,482	142,029
Wayne	5,055	1,827,506	124,891
Westchester	33,856	1,973,305	221,201
Wyoming	1,912	732,313	61,247
Yates	1,394	523,655	52,887

* Please Note: The 2016 Home Energy Assistance Program Federal Fiscal Year is October 1, 2015 through September 30, 2016.

Table 26
HOME ENERGY ASSISTANCE PROGRAM - NON-EMERGENCY*
 Number, Total Dollar Amount and Average Dollar Amount of Benefits Authorized - Federal Fiscal Year to Date
 December 2015

Local District	Autopay			Regular Non-Autopay		
	Benefits Authorized	Dollar Amount Authorized	Average Dollar Amount	Benefits Authorized	Dollar Amount Authorized	Average Dollar Amount
New York State	483,671	\$120,060,852	\$248	102,637	\$47,192,514	\$460
New York City	18,819	7,656,870	407	8,166	2,787,602	341
Rest of State	464,852	112,403,982	242	94,471	44,404,912	470
Albany	15,052	2,982,829	198	1,284	532,960	415
Allegany	2,237	851,840	381	1,325	618,595	467
Broome	11,491	2,933,286	255	2,764	1,241,532	449
Cattaraugus	5,038	1,655,615	329	1,773	822,990	464
Cayuga	3,727	1,196,242	321	1,102	518,365	470
Chautauqua	9,529	2,952,651	310	2,565	1,076,190	420
Chemung	5,774	1,259,473	218	1,269	524,286	413
Chenango	2,488	949,732	382	1,562	860,839	551
Clinton	4,740	2,053,718	433	1,874	1,047,413	559
Columbia	2,880	864,449	300	779	420,226	539
Cortland	2,542	708,458	279	894	426,055	477
Delaware	2,415	922,381	382	1,272	710,333	558
Dutchess	9,949	2,000,531	201	1,134	607,736	536
Erie	60,275	15,551,698	258	13,753	5,266,187	383
Essex	1,308	476,446	364	926	538,682	582
Franklin	3,083	1,138,599	369	1,375	799,560	581
Fulton	3,393	1,159,158	342	1,467	746,495	509
Genesee	2,339	637,713	273	645	298,320	463
Greene	2,353	805,283	342	960	525,499	547
Hamilton	175	57,891	331	119	69,646	585
Herkimer	3,913	1,246,517	319	1,465	716,550	489
Jefferson	6,289	1,968,196	313	1,371	686,048	500
Lewis	1,291	583,513	452	607	341,591	563
Livingston	2,648	910,442	344	778	368,320	473
Madison	2,871	927,244	323	1,002	510,001	509
Monroe	48,653	10,131,761	208	3,664	1,411,001	385
Montgomery	3,351	1,046,182	312	1,272	622,882	490
Nassau	19,082	2,198,696	115	2,270	1,128,321	497
Niagara	12,906	3,160,848	245	2,855	1,173,592	411
Oneida	14,600	4,043,468	277	3,798	1,756,746	463
Onondaga	26,259	5,895,075	224	3,899	1,528,243	392
Ontario	4,065	1,029,456	253	1,064	467,136	439
Orange	12,007	2,594,346	216	2,154	1,018,296	473
Orleans	1,903	724,753	381	838	393,707	470
Oswego	6,228	2,334,811	375	1,374	718,416	523
Otsego	2,362	887,082	376	1,041	588,934	566
Putnam	1,149	238,730	208	355	183,695	517
Rensselaer	6,415	1,558,990	243	1,593	772,800	485
Rockland	11,507	1,971,707	171	535	198,073	370
St. Lawrence	5,741	2,046,852	357	2,536	1,390,579	548
Saratoga	6,000	2,053,538	342	1,408	702,143	499
Schenectady	8,727	2,090,694	240	1,017	415,717	409
Schoharie	1,434	606,556	423	735	413,453	563
Schuyler	898	377,030	420	536	286,710	535
Seneca	1,409	383,048	272	436	216,767	497
Steuben	4,297	1,410,520	328	1,957	911,978	466
Suffolk	33,606	7,921,019	236	4,698	2,454,037	522
Sullivan	4,280	1,128,393	264	1,508	854,057	566
Tioga	2,184	935,752	428	921	486,072	528
Tompkins	3,837	809,255	211	681	329,252	483
Ulster	9,326	2,413,844	259	2,101	1,176,314	560
Warren	2,973	943,194	317	1,099	571,757	520
Washington	2,582	1,008,049	390	1,126	607,600	540
Wayne	3,997	1,328,646	332	1,055	493,249	468
Westchester	32,957	1,556,154	47	895	396,805	443
Wyoming	1,276	438,731	344	635	288,917	455
Yates	1,041	342,897	329	350	173,244	495

* Please Note: The 2016 Home Energy Assistance Program Federal Fiscal Year is October 1, 2015 through September 30, 2016.

Table 27
HOME ENERGY ASSISTANCE PROGRAM - EMERGENCY*
Number, Total Dollar Amount and Average Dollar Amount of Benefits Authorized - Federal Fiscal Year to Date
December 2015

Local District	Emergency			Furnace Replacement			Furnace Repair & Repair/Replacement Estimates		
	Benefits Authorized	Dollar Amount Authorized	Average Dollar Amount	Benefits Authorized	Dollar Amount Authorized	Average Dollar Amount	Benefits Authorized	Dollar Amount Authorized	Average Dollar Amount
New York State	0	\$0	\$0	287	\$929,832	\$3,240	238	\$133,956	\$563
New York City	0	0	0	0	0	0	0	0	0
Rest of State	0	0	0	287	929,832	3,240	238	133,956	563
Albany	0	0	0	4	11,151	2,788	1	338	338
Allegany	0	0	0	1	2,550	2,550	10	6,511	651
Broome	0	0	0	8	26,211	3,276	11	3,659	333
Cattaraugus	0	0	0	9	25,874	2,875	4	902	225
Cayuga	0	0	0	4	13,840	3,460	22	6,924	315
Chautauqua	0	0	0	10	31,871	3,187	16	7,599	475
Chemung	0	0	0	13	40,719	3,132	1	2,800	2,800
Chenango	0	0	0	3	10,055	3,352	1	252	252
Clinton	0	0	0	8	24,380	3,048	12	7,628	636
Columbia	0	0	0	0	0	0	0	0	0
Cortland	0	0	0	0	0	0	0	0	0
Delaware	0	0	0	7	24,717	3,531	7	2,706	387
Dutchess	0	0	0	1	2,500	2,500	2	916	458
Erie	0	0	0	40	112,153	2,804	10	6,416	642
Essex	0	0	0	2	4,227	2,113	1	1,988	1,988
Franklin	0	0	0	0	0	0	6	5,838	973
Fulton	0	0	0	3	10,570	3,523	7	1,365	195
Genesee	0	0	0	0	0	0	0	0	0
Greene	0	0	0	1	3,602	3,602	1	1,600	1,600
Hamilton	0	0	0	0	0	0	1	426	426
Herkimer	0	0	0	7	29,506	4,215	2	970	485
Jefferson	0	0	0	3	8,575	2,858	2	1,252	626
Lewis	0	0	0	1	1,871	1,871	1	193	193
Livingston	0	0	0	2	5,376	2,688	2	633	316
Madison	0	0	0	0	0	0	4	883	221
Monroe	0	0	0	25	75,089	3,004	1	496	496
Montgomery	0	0	0	0	0	0	4	752	188
Nassau	0	0	0	5	26,535	5,307	2	1,275	638
Niagara	0	0	0	12	32,458	2,705	9	2,306	256
Oneida	0	0	0	17	45,324	2,666	2	1,797	899
Onondaga	0	0	0	17	50,133	2,949	9	4,744	527
Ontario	0	0	0	4	14,932	3,733	2	7,778	3,889
Orange	0	0	0	7	36,322	5,189	3	1,360	453
Orleans	0	0	0	5	17,434	3,487	0	0	0
Oswego	0	0	0	3	7,572	2,524	5	1,953	391
Otsego	0	0	0	0	0	0	1	1,250	1,250
Putnam	0	0	0	1	2,015	2,015	0	0	0
Rensselaer	0	0	0	9	39,213	4,357	4	12,239	3,060
Rockland	0	0	0	0	0	0	1	200	200
St. Lawrence	0	0	0	8	19,626	2,453	39	10,875	279
Saratoga	0	0	0	14	40,377	2,884	11	3,142	286
Schenectady	0	0	0	2	9,219	4,610	0	0	0
Schoharie	0	0	0	1	2,800	2,800	0	0	0
Schuyler	0	0	0	4	14,092	3,523	1	493	493
Seneca	0	0	0	0	0	0	0	0	0
Steuben	0	0	0	0	0	0	0	0	0
Suffolk	0	0	0	6	25,428	4,238	4	3,331	833
Sullivan	0	0	0	0	0	0	0	0	0
Tioga	0	0	0	3	16,500	5,500	2	1,949	975
Tompkins	0	0	0	0	0	0	1	245	245
Ulster	0	0	0	6	17,659	2,943	4	5,453	1,363
Warren	0	0	0	5	17,093	3,419	2	813	406
Washington	0	0	0	1	1,709	1,709	1	124	124
Wayne	0	0	0	1	4,869	4,869	2	742	371
Westchester	0	0	0	3	19,020	6,340	1	1,326	1,326
Wyoming	0	0	0	1	4,665	4,665	0	0	0
Yates	0	0	0	0	0	0	3	7,514	2,505

* Please Note: The 2016 Home Energy Assistance Program Federal Fiscal Year is October 1, 2015 through September 30, 2016.

Table 28
FEDERAL ALL FAMILIES WORK PARTICIPATION RATES
TANF, Safety Net Assistance MOE and Combined TANF and Safety Net Assistance MOE
December 2015

Local District	Combined TANF and Safety Net Assistance MOE			TANF			Safety Net Assistance MOE		
	Rate	Numerator	Denominator	Rate	Numerator	Denominator	Rate	Numerator	Denominator
New York State*	33.8%	30,375	89,880	33.2%	18,159	54,687	34.7%	12,215	35,193
New York City*	35.5%	20,576	58,032	34.8%	11,433	32,825	36.4%	9,142	25,207
Rest of State	22.9%	7,224	31,487	21.4%	4,581	21,386	26.2%	2,643	10,101
Albany	19.2%	179	931	18.5%	116	627	20.7%	63	304
Allegany	17.7%	22	124	17.2%	15	87	18.9%	7	37
Broome	14.9%	149	999	14.4%	98	681	16.0%	51	318
Cattaraugus	30.6%	41	134	31.0%	35	113	28.6%	6	21
Cayuga	11.4%	31	272	9.1%	20	219	20.8%	11	53
Chautauqua	19.0%	155	817	18.6%	93	499	19.5%	62	318
Chemung	14.3%	17	119	15.2%	15	99	10.0%	2	20
Chenango	9.8%	9	92	8.5%	7	82	20.0%	2	10
Clinton	13.3%	17	128	14.0%	13	93	11.4%	4	35
Columbia	14.3%	20	140	12.3%	13	106	20.6%	7	34
Cortland	16.7%	26	156	18.0%	24	133	8.7%	2	23
Delaware	23.8%	10	42	23.8%	10	42	N/A	0	0
Dutchess	15.6%	36	231	11.9%	19	160	23.9%	17	71
Erie	37.2%	1,807	4,854	34.8%	1,166	3,348	42.6%	641	1,506
Essex	7.7%	1	13	7.7%	1	13	N/A	0	0
Franklin	11.5%	15	131	10.7%	11	103	14.3%	4	28
Fulton	35.2%	19	54	34.0%	18	53	100.0%	1	1
Genesee	15.8%	12	76	14.3%	9	63	23.1%	3	13
Greene	26.3%	26	99	25.4%	17	67	28.1%	9	32
Hamilton	0.0%	0	2	0.0%	0	2	N/A	0	0
Herkimer	10.9%	13	119	13.3%	12	90	3.4%	1	29
Jefferson	11.1%	27	244	11.1%	23	207	10.8%	4	37
Lewis	9.1%	2	22	9.5%	2	21	0.0%	0	1
Livingston	9.3%	21	225	6.6%	12	183	21.4%	9	42
Madison	16.2%	16	99	16.0%	12	75	16.7%	4	24
Monroe	17.9%	944	5,274	16.3%	540	3,313	20.6%	404	1,961
Montgomery	20.2%	37	183	19.2%	28	146	24.3%	9	37
Nassau	27.9%	509	1,822	27.3%	296	1,083	28.8%	213	739
Niagara	14.2%	129	907	12.8%	81	632	17.5%	48	275
Oneida	21.1%	308	1,458	19.3%	200	1,035	25.5%	108	423
Onondaga	13.3%	301	2,264	11.6%	189	1,624	17.5%	112	640
Ontario	18.6%	35	188	18.6%	29	156	18.8%	6	32
Orange	25.0%	216	864	22.1%	118	533	29.6%	98	331
Orleans	19.2%	32	167	18.2%	22	121	21.7%	10	46
Oswego	10.0%	53	531	10.9%	47	433	6.1%	6	98
Otsego	22.7%	5	22	22.7%	5	22	N/A	0	0
Putnam	33.3%	4	12	40.0%	4	10	0.0%	0	2
Rensselaer	26.3%	196	744	26.1%	136	522	27.0%	60	222
Rockland	36.8%	77	209	36.8%	50	136	37.0%	27	73
St. Lawrence	20.4%	69	338	18.5%	48	259	26.6%	21	79
Saratoga	7.1%	2	28	7.1%	2	28	N/A	0	0
Schenectady	27.3%	159	582	27.8%	106	381	26.4%	53	201
Schoharie	20.0%	7	35	18.2%	6	33	50.0%	1	2
Schuyler	15.3%	9	59	16.7%	8	48	9.1%	1	11
Seneca	22.0%	18	82	20.6%	13	63	26.3%	5	19
Steuben	21.5%	45	209	23.7%	36	152	15.8%	9	57
Suffolk	34.3%	752	2,195	31.5%	465	1,475	39.9%	287	720
Sullivan	22.5%	34	151	21.4%	24	112	25.6%	10	39
Tioga	20.6%	13	63	19.3%	11	57	33.3%	2	6
Tompkins	13.5%	25	185	11.5%	16	139	19.6%	9	46
Ulster	10.8%	56	518	11.8%	43	365	8.5%	13	153
Warren	22.2%	6	27	23.1%	6	26	0.0%	0	1
Washington	23.2%	13	56	23.5%	12	51	20.0%	1	5
Wayne	11.3%	16	142	11.7%	15	128	7.1%	1	14
Westchester	23.9%	474	1,983	23.7%	256	1,078	24.1%	218	905
Wyoming	16.7%	7	42	16.2%	6	37	20.0%	1	5
Yates	8.3%	2	24	9.1%	2	22	0.0%	0	2

* Statewide and New York City participation rates are estimated from federal disaggregated reporting samples, which are the source of the rates used by the United States Department of Health and Human Services to determine if a state has met participation goals. Because the sample size is insufficient to permit rate estimates for non-New York City districts, rates for those districts are derived directly from automated systems data. Thus, Rest of State and New York City numerators and denominators will not sum to the statewide total. Estimates are from fourth quarter Federal Fiscal Year 2015 samples.

Table 29
WORK SANCTION STATUS BY PRESENCE IN FEDERAL ALL FAMILIES WORK PARTICIPATION CALCULATION
TANF, Safety Net Assistance MOE and Combined TANF and Safety Net Assistance MOE
December 2015

Local District	Combined TANF and Safety Net Assistance MOE		TANF		Safety Net Assistance MOE	
	Sanctioned in the Denominator	Sanctioned Removed From Denominator	Sanctioned in the Denominator	Sanctioned Removed From Denominator	Sanctioned in the Denominator	Sanctioned Removed From Denominator
New York State*	4,156	4,204	1,386	2,680	2,770	1,524
New York City*	2,043	2,497	739	1,340	1,304	1,157
Rest of State	2,530	1,174	1,179	802	1,351	372
Albany	52	34	23	26	29	8
Allegany	4	8	2	8	2	0
Broome	129	43	56	28	73	15
Cattaraugus	10	5	7	4	3	1
Cayuga	22	15	14	13	8	2
Chautauqua	69	40	40	27	29	13
Chemung	14	10	9	8	5	2
Chenango	5	4	3	3	2	1
Clinton	4	6	0	3	4	3
Columbia	19	6	12	5	7	1
Cortland	2	5	1	5	1	0
Delaware	1	1	1	1	0	0
Dutchess	12	6	5	2	7	4
Erie	238	163	113	109	125	54
Essex	0	2	0	2	0	0
Franklin	7	3	4	2	3	1
Fulton	2	1	2	1	0	0
Genesee	6	6	2	5	4	1
Greene	6	8	3	4	3	4
Hamilton	0	0	0	0	0	0
Herkimer	2	4	1	4	1	0
Jefferson	33	12	26	10	7	2
Lewis	1	0	1	0	0	0
Livingston	3	9	2	5	1	4
Madison	4	0	3	0	1	0
Monroe	535	252	210	154	325	98
Montgomery	17	5	12	2	5	3
Nassau	159	68	78	46	81	22
Niagara	143	27	58	22	85	5
Oneida	113	46	53	35	60	11
Onondaga	238	48	96	33	142	15
Ontario	4	7	2	6	2	1
Orange	59	18	33	9	26	9
Orleans	20	5	11	5	9	0
Oswego	36	17	23	14	13	3
Otsego	2	0	2	0	0	0
Putnam	0	0	0	0	0	0
Rensselaer	60	35	33	25	27	10
Rockland	9	7	5	5	4	2
St. Lawrence	40	18	21	13	19	5
Saratoga	0	1	0	1	0	0
Schenectady	143	39	75	27	68	12
Schoharie	1	1	1	1	0	0
Schuyler	6	2	5	2	1	0
Seneca	4	2	1	1	3	1
Steuben	3	6	1	5	2	1
Suffolk	98	87	47	61	51	26
Sullivan	18	7	10	4	8	3
Tioga	1	2	0	2	1	0
Tompkins	24	4	11	4	13	0
Ulster	47	21	21	14	26	7
Warren	2	1	2	1	0	0
Washington	2	4	2	4	0	0
Wayne	7	3	4	2	3	1
Westchester	93	50	31	29	62	21
Wyoming	1	0	1	0	0	0
Yates	0	0	0	0	0	0

* Statewide and New York City sanction rates are estimated from federal disaggregated reporting samples, which are the source of such data used by the United States Department of Health and Human Services to determine if a state has met participation goals. Because the sample size is insufficient to permit sanction estimates for non-New York City districts, data for those districts are derived directly from automated systems. Thus, Rest of State and New York City counts may not sum to the statewide total. This table uses a federal definition of sanction and includes only persons who are deemed a work eligible individual and are sanctioned for non-compliance for work or substance abuse requirements. Estimates are from fourth quarter Federal Fiscal Year 2015 samples.

Table 30
 TEMPORARY ASSISTANCE CASES WITH EARNED INCOME
 Cases, Average Gross Earned Income and Average Net Earned Income after Application of Disregards
 December 2015

Local District	TANF			Safety Net Assistance MOE			Safety Net Assistance Non-MOE		
	Cases	Average Gross Earned Income	Average Net Earned Income	Cases	Average Gross Earned Income	Average Net Earned Income	Cases	Average Gross Earned Income	Average Net Earned Income
New York State	15,153	\$1,004	\$469	11,657	\$1,018	\$468	9,825	\$1,284	\$791
New York City	10,069	1,066	505	8,596	1,038	478	7,407	1,379	889
Rest of State	5,084	881	398	3,061	961	438	2,418	991	492
Albany	126	915	420	101	1,013	462	75	1,237	597
Allegany	22	709	310	10	657	289	7	405	177
Broome	112	868	388	80	893	402	64	825	388
Cattaraugus	22	849	379	4	1,157	534	4	227	121
Cayuga	29	692	301	16	905	408	10	758	366
Chautauqua	103	888	399	85	854	385	65	806	376
Chemung	22	749	327	5	777	338	4	199	79
Chenango	13	595	255	2	1,066	488	10	325	189
Clinton	14	846	382	3	803	357	8	795	560
Columbia	19	700	303	8	814	388	11	924	580
Cortland	26	899	404	6	806	358	17	546	278
Delaware	10	889	399	0	0	0	5	102	16
Dutchess	28	990	460	21	1,103	504	8	533	371
Erie	646	868	387	470	960	434	492	1,201	566
Essex	1	649	280	0	0	0	0	0	0
Franklin	17	612	261	6	648	279	21	574	271
Fulton	11	848	379	1	734	322	2	886	404
Genesee	14	773	342	4	875	393	2	1,167	539
Greene	21	967	439	12	885	397	8	594	368
Hamilton	0	0	0	0	0	0	1	252	162
Herkimer	15	527	219	3	585	233	6	755	339
Jefferson	32	630	271	9	773	341	22	680	334
Lewis	3	567	238	0	0	0	0	0	0
Livingston	23	805	358	13	923	417	24	846	404
Madison	11	888	399	5	1,124	517	3	713	445
Monroe	671	866	389	586	934	422	220	852	413
Montgomery	49	812	361	10	942	426	10	736	374
Nassau	433	977	453	237	995	451	134	850	488
Niagara	122	700	305	90	852	385	44	768	369
Oneida	229	839	375	147	927	419	217	1,215	567
Onondaga	353	823	367	201	1,008	460	215	1,193	567
Ontario	40	771	341	10	1,039	474	7	490	289
Orange	177	951	430	140	985	450	47	1,045	502
Orleans	18	801	355	11	720	315	12	528	267
Oswego	68	802	357	17	921	413	34	897	416
Otsego	3	646	278	0	0	0	10	184	96
Putnam	8	967	493	0	0	0	4	519	433
Rensselaer	153	786	348	78	940	429	57	1,007	473
Rockland	139	921	407	27	1,086	477	60	1,136	544
St. Lawrence	57	700	306	27	752	336	47	536	246
Saratoga	2	537	223	0	0	0	3	228	138
Schenectady	111	914	413	68	1,028	473	39	957	500
Schoharie	13	826	368	1	1,284	597	7	860	588
Schuyler	17	720	315	5	584	247	9	543	237
Seneca	17	715	312	9	1,023	466	4	833	380
Steuben	30	887	399	14	892	430	15	427	216
Suffolk	442	1,055	496	274	1,118	524	193	1,058	620
Sullivan	37	697	305	10	1,078	494	9	632	342
Tioga	11	929	420	2	1,165	538	1	322	232
Tompkins	26	859	350	14	782	348	14	722	400
Ulster	102	897	415	34	773	400	53	746	370
Warren	10	912	406	0	0	0	1	523	216
Washington	12	982	455	3	877	394	0	0	0
Wayne	13	742	326	2	401	311	8	768	437
Westchester	374	930	426	180	957	443	69	894	509
Wyoming	5	558	234	0	0	0	1	69	0
Yates	2	530	220	0	0	0	5	921	567

2015 Summary

Table A-1
Comparison of Monthly Average Cases and Recipients, and Annual Expenditures for 2015 and 2014
2015 SUMMARY

Program	2015	2014	Absolute Change	Percentage Change
New York State				(%)
Temporary Assistance				
Cases	300,005	296,157	3,848	1.30
Recipients	573,563	565,859	7,703	1.36
Expenditures	\$2,244,583,343	\$2,217,173,489	\$27,409,854	1.24
Supplemental Nutrition Assistance Program				
Households	1,657,573	1,684,597	(27,024)	(1.60)
Recipients	3,019,719	3,092,073	(72,354)	(2.34)
Expenditures	\$5,050,237,676	\$5,135,576,347	(\$85,338,671)	(1.66)
Supplemental Security Income				
Recipients	706,873	696,423	10,450	1.50
Expenditures	\$5,020,391,071	\$4,911,022,249	\$109,368,822	2.23
New York City				
Temporary Assistance				
Cases	189,062	181,200	7,862	4.34
Recipients	352,932	335,707	17,225	5.13
Expenditures	\$1,381,921,357	\$1,324,850,287	\$57,071,070	4.31
Supplemental Nutrition Assistance Program				
Households	953,439	978,645	(25,206)	(2.58)
Recipients	1,702,670	1,758,605	(55,934)	(3.18)
Expenditures	\$2,991,056,824	\$3,066,495,622	(\$75,438,798)	(2.46)
Supplemental Security Income				
Recipients	429,160	425,123	4,037	0.95
Expenditures	\$3,077,256,704	\$3,033,542,880	\$43,713,824	1.44
Rest of State				
Temporary Assistance				
Cases	110,943	114,957	(4,014)	(3.49)
Recipients	220,630	230,152	(9,522)	(4.14)
Expenditures	\$862,661,986	\$892,323,202	(\$29,661,216)	(3.32)
Supplemental Nutrition Assistance Program				
Households	704,134	705,952	(1,818)	(0.26)
Recipients	1,317,049	1,333,469	(16,420)	(1.23)
Expenditures	\$2,059,180,852	\$2,069,080,725	(\$9,899,873)	(0.48)
Supplemental Security Income				
Recipients	277,713	271,300	6,413	2.36
Expenditures	\$1,943,134,367	\$1,877,479,369	\$65,654,998	3.50

Table A-2
TEMPORARY ASSISTANCE
 Year to Year Comparison by Local District
 Monthly Average Cases and Recipients, and Annual Expenditures
 2015 SUMMARY

Local District	2015			2014			Percentage Change		
	Cases	Recipients	Expenditures	Cases	Recipients	Expenditures	Cases (%)	Recipients (%)	Expenditures (%)
New York State	300,005	573,563	\$2,244,583,343	296,157	565,859	\$2,217,173,489	1.30	1.36	1.24
New York City	189,062	352,932	1,381,921,357	181,200	335,707	1,324,850,287	4.34	5.13	4.31
Rest of State	110,943	220,630	862,661,986	114,957	230,152	892,323,202	(3.49)	(4.14)	(3.32)
Albany	2,812	6,057	22,957,951	2,882	6,274	22,989,700	(2.43)	(3.46)	(0.14)
Allegany	478	893	2,907,517	509	988	2,955,875	(5.99)	(9.55)	(1.64)
Broome	3,783	7,133	24,434,887	3,735	7,199	24,926,179	1.29	(0.92)	(1.97)
Cattaraugus	672	1,065	4,069,701	598	975	3,768,438	12.41	9.23	7.99
Cayuga	888	1,654	6,323,403	824	1,535	5,787,720	7.80	7.74	9.26
Chautauqua	2,691	5,631	16,601,165	2,681	5,783	17,201,457	0.38	(2.62)	(3.49)
Chemung	794	1,383	5,239,976	847	1,485	5,491,816	(6.27)	(6.86)	(4.59)
Chenango	452	783	2,607,237	436	765	2,674,295	3.77	2.28	(2.51)
Clinton	872	1,399	6,041,466	880	1,460	6,177,477	(0.90)	(4.15)	(2.20)
Columbia	531	983	3,961,276	571	1,084	4,056,435	(6.97)	(9.33)	(2.35)
Cortland	662	1,093	4,469,291	674	1,161	4,509,171	(1.78)	(5.88)	(0.88)
Delaware	267	461	1,574,190	315	541	1,912,251	(15.29)	(14.83)	(17.68)
Dutchess	1,260	2,276	11,148,324	1,389	2,525	12,897,797	(9.24)	(9.83)	(13.56)
Erie	14,942	32,583	90,816,705	14,827	32,404	93,088,242	0.78	0.55	(2.44)
Essex	120	183	826,761	140	226	998,714	(14.57)	(18.89)	(17.22)
Franklin	562	1,001	3,550,490	529	997	3,304,830	6.29	0.42	7.43
Fulton	311	507	2,082,740	362	587	2,337,159	(14.21)	(13.69)	(10.89)
Genesee	302	569	2,153,679	334	622	2,199,353	(9.67)	(8.46)	(2.08)
Greene	408	745	2,829,025	512	963	3,668,070	(20.23)	(22.68)	(22.87)
Hamilton	16	24	67,797	17	27	79,886	(7.25)	(9.72)	(15.13)
Herkimer	530	913	3,374,432	528	953	3,296,684	0.22	(4.26)	2.36
Jefferson	1,194	2,019	7,942,073	1,096	1,812	7,345,751	8.98	11.41	8.12
Lewis	120	196	740,416	123	204	751,231	(2.37)	(4.12)	(1.44)
Livingston	803	1,498	5,119,436	865	1,645	5,579,615	(7.10)	(8.92)	(8.25)
Madison	403	708	2,650,434	400	723	2,692,980	0.90	(2.09)	(1.58)
Monroe	14,896	30,736	99,860,855	16,353	33,448	110,864,883	(8.91)	(8.11)	(9.93)
Montgomery	519	1,192	3,587,192	571	1,367	3,938,745	(8.98)	(12.81)	(8.93)
Nassau	7,321	13,326	65,467,234	7,468	13,659	61,400,645	(1.96)	(2.43)	6.62
Niagara	3,209	6,149	18,284,944	3,337	6,417	19,468,279	(3.83)	(4.17)	(6.08)
Oneida	4,484	10,542	28,366,019	4,538	10,673	30,266,777	(1.19)	(1.23)	(6.28)
Onondaga	7,355	15,937	47,232,100	7,420	16,130	47,568,599	(0.87)	(1.20)	(0.71)
Ontario	889	1,484	6,331,858	897	1,547	6,241,175	(0.98)	(4.06)	1.45
Orange	2,766	5,768	26,708,955	3,035	6,407	30,245,378	(8.86)	(9.98)	(11.69)
Orleans	683	1,207	4,282,397	740	1,351	4,669,461	(7.72)	(10.67)	(8.29)
Oswego	1,735	3,592	11,084,486	1,743	3,672	11,291,813	(0.45)	(2.19)	(1.84)
Otsego	216	314	2,105,373	223	323	2,202,099	(3.29)	(2.81)	(4.39)
Putnam	125	172	1,201,103	144	206	1,411,443	(13.28)	(16.52)	(14.90)
Rensselaer	1,683	4,092	12,608,477	1,790	4,407	14,051,806	(5.96)	(7.13)	(10.27)
Rockland	1,365	2,704	10,596,505	1,585	3,096	11,596,749	(13.88)	(12.65)	(8.63)
St. Lawrence	1,313	2,539	7,905,824	1,335	2,638	8,213,185	(1.64)	(3.77)	(3.74)
Saratoga	404	590	2,898,869	421	625	3,104,333	(4.19)	(5.58)	(6.62)
Schenectady	1,915	4,185	15,286,773	2,004	4,395	15,565,117	(4.43)	(4.79)	(1.79)
Schoharie	190	326	1,357,865	223	388	1,649,407	(14.70)	(16.07)	(17.68)
Schuyler	231	440	1,571,027	235	446	1,626,821	(1.77)	(1.38)	(3.43)
Seneca	279	533	1,938,652	277	527	1,882,661	0.69	1.12	2.97
Steuben	995	1,823	6,146,889	1,020	1,948	6,366,315	(2.43)	(6.41)	(3.45)
Suffolk	10,376	18,627	131,701,234	10,687	19,474	129,220,558	(2.91)	(4.35)	1.92
Sullivan	684	1,344	5,342,297	773	1,595	5,809,284	(11.49)	(15.75)	(8.04)
Tioga	379	613	2,622,807	393	660	2,785,867	(3.65)	(7.09)	(5.85)
Tompkins	800	1,368	5,381,775	901	1,561	5,928,903	(11.27)	(12.36)	(9.23)
Ulster	2,108	3,868	18,028,623	2,228	4,127	18,497,359	(5.40)	(6.26)	(2.53)
Warren	247	390	2,040,758	243	396	1,954,017	1.89	(1.31)	4.44
Washington	347	588	2,688,840	342	594	2,554,854	1.32	(1.07)	5.24
Wayne	645	1,073	3,917,612	655	1,105	4,162,285	(1.55)	(2.87)	(5.88)
Westchester	6,554	12,776	79,199,429	6,954	13,440	84,766,237	(5.74)	(4.94)	(6.57)
Wyoming	194	315	1,198,236	193	334	1,207,235	0.82	(5.66)	(0.75)
Yates	163	263	1,226,606	159	260	1,119,786	2.99	0.86	9.54

Table A-3
SUPPLEMENTAL NUTRITION ASSISTANCE PROGRAM
 Year to Year Comparison by Local District
 Monthly Average Households and Persons, and Annual Expenditures
 2015 SUMMARY

Local District	2015			2014			Percentage Change		
	Households	Persons	Expenditures	Households	Persons	Expenditures	Households (%)	Persons (%)	Expenditures (%)
New York State	1,657,573	3,019,719	5,050,237,676	1,684,597	3,092,073	5,135,576,347	(1.60)	(2.34)	(1.66)
New York City	953,439	1,702,670	2,991,056,824	978,645	1,758,605	3,066,495,622	(2.58)	(3.18)	(2.46)
Rest of State	704,134	1,317,049	2,059,180,852	705,952	1,333,469	2,069,080,725	(0.26)	(1.23)	(0.48)
Albany	19,667	36,735	56,695,971	19,767	36,990	57,323,897	(0.50)	(0.69)	(1.10)
Allegany	3,321	6,254	8,902,322	3,500	6,792	9,413,716	(5.13)	(7.91)	(5.43)
Broome	17,062	31,513	48,986,131	16,993	31,453	48,344,995	0.41	0.19	1.33
Cattaraugus	6,524	12,650	18,164,309	6,453	12,700	17,998,671	1.10	(0.40)	0.92
Cayuga	5,607	10,771	16,126,251	5,601	10,950	16,175,238	0.10	(1.64)	(0.30)
Chautauqua	14,078	26,967	41,928,717	14,087	27,533	42,082,009	(0.06)	(2.06)	(0.36)
Chemung	8,123	15,727	24,617,761	8,151	15,999	24,640,340	(0.35)	(1.70)	(0.09)
Chenango	3,905	7,595	11,021,906	4,065	7,930	11,480,573	(3.93)	(4.23)	(4.00)
Clinton	6,832	11,697	17,422,020	6,946	12,079	17,906,558	(1.64)	(3.16)	(2.71)
Columbia	3,766	6,442	9,884,185	3,781	6,598	10,293,144	(0.41)	(2.37)	(3.97)
Cortland	3,772	6,846	10,179,506	3,851	7,181	10,464,949	(2.06)	(4.66)	(2.73)
Delaware	3,263	6,447	9,271,724	3,366	6,685	9,700,342	(3.07)	(3.56)	(4.42)
Dutchess	13,265	23,558	37,366,678	13,600	24,577	39,205,481	(2.46)	(4.15)	(4.69)
Erie	84,425	157,182	248,033,630	84,950	159,050	246,381,477	(0.62)	(1.17)	0.67
Essex	2,079	3,691	5,472,717	2,123	3,813	5,610,861	(2.08)	(3.18)	(2.46)
Franklin	4,151	7,562	11,656,872	4,083	7,562	11,636,808	1.66	0.00	0.17
Fulton	4,962	9,158	13,682,695	5,125	9,648	14,316,790	(3.17)	(5.07)	(4.43)
Genesee	3,253	6,010	8,714,510	3,315	6,179	8,984,177	(1.87)	(2.72)	(3.00)
Greene	3,278	5,754	9,011,832	3,384	6,051	9,444,262	(3.12)	(4.90)	(4.58)
Hamilton	242	412	599,731	260	464	697,211	(6.92)	(11.25)	(13.98)
Herkimer	5,476	10,366	15,111,473	5,511	10,573	15,418,973	(0.63)	(1.96)	(1.99)
Jefferson	8,323	15,644	23,441,056	8,255	15,755	23,316,226	0.83	(0.71)	0.54
Lewis	1,844	3,580	4,876,621	1,854	3,664	4,909,463	(0.54)	(2.29)	(0.67)
Livingston	3,924	7,282	11,075,624	4,012	7,519	11,319,670	(2.19)	(3.16)	(2.16)
Madison	4,579	8,967	13,318,008	4,669	9,308	13,940,773	(1.93)	(3.66)	(4.47)
Monroe	66,491	122,535	196,608,105	65,659	121,674	193,453,906	1.27	0.71	1.63
Montgomery	4,711	9,625	14,648,248	4,816	9,958	14,968,345	(2.18)	(3.34)	(2.14)
Nassau	40,872	65,762	103,616,164	41,410	67,831	109,188,931	(1.30)	(3.05)	(5.10)
Niagara	18,064	32,411	50,543,185	17,935	32,575	50,179,013	0.72	(0.51)	0.73
Oneida	20,343	41,175	62,477,531	20,601	41,775	62,784,571	(1.25)	(1.44)	(0.49)
Onondaga	38,690	74,038	114,698,216	38,416	74,297	113,820,525	0.71	(0.35)	0.77
Ontario	5,605	10,089	15,072,335	5,740	10,438	15,572,714	(2.36)	(3.35)	(3.21)
Orange	20,114	47,112	73,670,788	20,518	48,038	75,095,158	(1.97)	(1.93)	(1.90)
Orleans	3,207	6,163	8,876,165	3,297	6,399	9,242,339	(2.74)	(3.69)	(3.96)
Oswego	9,623	19,879	29,720,567	9,773	20,694	30,573,454	(1.54)	(3.94)	(2.79)
Otsego	3,298	6,142	8,851,846	3,313	6,244	8,833,382	(0.45)	(1.63)	0.21
Putnam	1,711	2,680	4,161,702	1,764	2,795	4,464,171	(3.04)	(4.10)	(6.78)
Rensselaer	9,070	18,103	26,973,892	9,422	18,913	28,386,946	(3.74)	(4.28)	(4.98)
Rockland	17,074	47,289	73,813,588	17,298	47,534	73,700,442	(1.29)	(0.52)	0.15
St. Lawrence	8,448	16,487	24,106,425	8,630	17,023	24,741,162	(2.10)	(3.15)	(2.57)
Saratoga	8,735	15,301	22,462,103	9,143	16,365	24,083,712	(4.46)	(6.50)	(6.73)
Schenectady	13,155	24,702	39,764,810	13,474	25,592	40,866,447	(2.37)	(3.48)	(2.70)
Schoharie	2,038	3,766	5,632,407	2,052	3,880	5,695,543	(0.68)	(2.94)	(1.11)
Schuyler	1,278	2,498	3,559,493	1,309	2,601	3,581,945	(2.37)	(3.96)	(0.63)
Seneca	1,854	3,486	5,256,493	1,923	3,680	5,501,363	(3.59)	(5.27)	(4.45)
Steuben	6,104	12,195	17,118,807	6,367	12,942	18,004,790	(4.13)	(5.77)	(4.92)
Suffolk	76,180	130,303	217,227,617	74,156	128,330	211,984,239	2.73	1.54	2.47
Sullivan	6,307	12,433	19,680,061	6,262	12,459	19,889,001	0.72	(0.21)	(1.05)
Tioga	3,146	6,388	8,948,017	3,178	6,482	8,928,548	(1.03)	(1.45)	0.22
Tompkins	5,060	8,877	13,756,183	5,294	9,341	14,349,965	(4.41)	(4.96)	(4.14)
Ulster	12,073	21,294	33,921,141	12,291	21,835	34,595,323	(1.77)	(2.47)	(1.95)
Warren	4,050	7,313	10,659,228	4,132	7,569	11,049,385	(1.99)	(3.38)	(3.53)
Washington	4,052	7,708	11,201,547	4,058	7,886	11,346,674	(0.14)	(2.25)	(1.28)
Wayne	5,669	10,532	15,202,505	5,768	10,901	15,907,519	(1.70)	(3.38)	(4.43)
Westchester	48,245	86,050	143,213,245	47,073	84,241	138,828,395	2.49	2.15	3.16
Wyoming	1,717	3,189	4,367,583	1,776	3,418	4,705,036	(3.32)	(6.72)	(7.17)
Yates	1,429	2,716	3,808,605	1,401	2,708	3,751,177	1.99	0.30	1.53

Table A-4
SUPPLEMENTAL SECURITY INCOME
 Year to Year Comparison by Local District
 Monthly Average Recipients and Annual Expenditures
 2015 SUMMARY

Local District	2015		2014		Percentage Change	
	Recipients	Expenditures	Recipients	Expenditures	Recipients (%)	Expenditures (%)
New York State	711,576	\$5,045,837,836	701,600	\$4,937,873,247	1.42	2.19
New York City	429,160	3,077,256,704	425,123	3,033,542,880	0.95	1.44
Rest of State	277,713	1,943,134,367	271,300	1,877,479,369	2.36	3.50
Albany	7,523	52,770,535	7,425	50,836,949	1.32	3.80
Allegany	1,588	10,763,801	1,587	10,695,575	0.06	0.64
Broome	7,355	52,729,928	7,186	50,435,560	2.36	4.55
Cattaraugus	2,651	17,678,880	2,650	17,687,456	0.07	(0.05)
Cayuga	1,983	13,805,521	1,931	13,266,712	2.69	4.06
Chautauqua	5,131	35,560,432	5,102	35,260,385	0.56	0.85
Chemung	3,590	24,358,596	3,586	23,695,152	0.14	2.80
Chenango	1,641	10,848,483	1,631	10,782,202	0.60	0.61
Clinton	3,171	21,671,518	3,104	20,801,866	2.17	4.18
Columbia	1,711	12,596,893	1,700	11,924,392	0.67	5.64
Cortland	1,304	9,009,474	1,313	8,800,212	(0.68)	2.38
Delaware	1,338	8,895,707	1,297	8,493,421	3.12	4.74
Dutchess	6,028	42,459,327	5,866	41,267,727	2.77	2.89
Erie	30,669	221,044,482	30,170	213,873,092	1.66	3.35
Essex	1,106	7,830,606	1,111	7,436,084	(0.49)	5.31
Franklin	1,849	13,132,143	1,817	12,645,136	1.73	3.85
Fulton	2,295	15,818,790	2,165	14,859,276	6.03	6.46
Genesee	1,312	9,352,768	1,279	8,761,810	2.59	6.74
Greene	1,529	10,566,884	1,493	10,103,246	2.43	4.59
Hamilton	62	471,698	61	366,740	2.74	28.62
Herkimer	1,816	12,008,295	1,775	11,499,241	2.30	4.43
Jefferson	3,049	20,706,791	2,964	19,645,235	2.86	5.40
Lewis	650	4,199,176	669	4,260,751	(2.89)	(1.45)
Livingston	1,312	9,336,513	1,275	8,958,648	2.94	4.22
Madison	1,472	10,045,868	1,465	9,709,017	0.50	3.47
Monroe	27,781	206,666,452	26,998	199,743,263	2.90	3.47
Montgomery	2,071	14,608,094	2,014	14,098,649	2.83	3.61
Nassau	19,218	128,686,319	18,523	122,145,874	3.75	5.35
Niagara	6,422	45,309,089	6,308	44,351,988	1.82	2.16
Oneida	8,909	63,110,633	8,710	61,050,227	2.29	3.37
Onondaga	15,493	113,958,106	15,058	109,347,001	2.88	4.22
Ontario	2,063	13,667,571	1,983	13,146,717	4.02	3.96
Orange	7,458	52,077,834	7,346	51,170,232	1.53	1.77
Orleans	1,050	7,331,752	1,031	6,959,744	1.81	5.35
Oswego	3,599	25,821,804	3,502	24,508,244	2.77	5.36
Otsego	1,539	10,860,299	1,481	9,996,313	3.91	8.64
Putnam	928	5,867,898	913	5,793,994	1.55	1.28
Rensselaer	4,867	35,223,629	4,665	33,282,078	4.33	5.83
Rockland	5,617	38,596,835	5,452	37,849,627	3.03	1.97
St. Lawrence	4,070	28,156,881	4,000	26,714,434	1.75	5.40
Saratoga	3,201	20,971,331	3,135	20,636,337	2.11	1.62
Schenectady	5,966	43,383,611	5,728	41,068,860	4.15	5.64
Schoharie	765	5,226,686	762	5,158,742	0.43	1.32
Schuyler	479	3,149,457	476	3,153,757	0.63	(0.14)
Seneca	845	5,753,723	818	5,526,925	3.40	4.10
Steuben	3,238	21,846,574	3,221	21,412,281	0.53	2.03
Suffolk	23,321	158,627,302	22,869	155,474,366	1.98	2.03
Sullivan	2,849	19,113,785	2,788	18,551,675	2.18	3.03
Tioga	1,272	8,621,030	1,247	8,472,159	1.98	1.76
Tompkins	1,721	11,698,042	1,707	11,739,154	0.81	(0.35)
Ulster	4,551	30,807,574	4,447	30,209,234	2.34	1.98
Warren	1,771	11,487,301	1,730	11,103,808	2.36	3.45
Washington	1,734	11,514,585	1,684	10,983,238	2.93	4.84
Wayne	2,334	16,381,873	2,270	15,675,049	2.82	4.51
Westchester	19,164	128,141,681	18,561	123,740,903	3.25	3.56
Wyoming	719	4,979,408	707	4,613,988	1.66	7.92
Yates	562	3,824,099	548	3,734,623	2.57	2.40
Mental Hygiene	4,703	25,446,765	5,178	26,850,998	(9.16)	(5.23)

Table A-5
TEMPORARY ASSISTANCE
 Monthly Average Cases, Recipients, Children and Adults, and Annual Expenditures by Local District
 2015 SUMMARY

Local District	Temporary Assistance				
	Monthly Average				Total Expenditures
	Cases	Recipients	Children	Adults	
New York State	300,005	573,563	296,653	276,924	\$2,244,583,343
New York City	189,062	352,932	171,989	180,959	1,381,921,357
Rest of State	110,943	220,630	124,665	95,965	862,661,986
Albany	2,812	6,057	3,631	2,426	22,957,951
Allegany	478	893	502	392	2,907,517
Broome	3,783	7,133	3,992	3,141	24,434,887
Cattaraugus	672	1,065	582	484	4,069,701
Cayuga	888	1,654	883	770	6,323,403
Chautauqua	2,691	5,631	3,196	2,436	16,601,165
Chemung	794	1,383	891	492	5,239,976
Chenango	452	783	452	330	2,607,237
Clinton	872	1,399	800	599	6,041,466
Columbia	531	983	524	460	3,961,276
Cortland	662	1,093	512	581	4,469,291
Delaware	267	461	283	178	1,574,190
Dutchess	1,260	2,276	1,470	807	11,148,324
Erie	14,942	32,583	18,851	13,732	90,816,705
Essex	120	183	112	72	826,761
Franklin	562	1,001	497	505	3,550,490
Fulton	311	507	302	204	2,082,740
Genesee	302	569	336	234	2,153,679
Greene	408	745	395	349	2,829,025
Hamilton	16	24	12	12	67,797
Herkimer	530	913	511	401	3,374,432
Jefferson	1,194	2,019	988	1,031	7,942,073
Lewis	120	196	122	73	740,416
Livingston	803	1,498	749	749	5,119,436
Madison	403	708	407	301	2,650,434
Monroe	14,896	30,736	17,458	13,278	99,860,855
Montgomery	519	1,192	775	417	3,587,192
Nassau	7,321	13,326	6,983	6,343	65,467,234
Niagara	3,209	6,149	3,332	2,817	18,284,944
Oneida	4,484	10,542	6,143	4,398	28,366,019
Onondaga	7,355	15,937	9,332	6,605	47,232,100
Ontario	889	1,484	781	703	6,331,858
Orange	2,766	5,768	3,401	2,367	26,708,955
Orleans	683	1,207	653	554	4,282,397
Oswego	1,735	3,592	2,003	1,588	11,084,486
Otsego	216	314	158	156	2,105,373
Putnam	125	172	90	83	1,201,103
Rensselaer	1,683	4,092	2,619	1,474	12,608,477
Rockland	1,365	2,704	1,651	1,053	10,596,505
St. Lawrence	1,313	2,539	1,334	1,205	7,905,824
Saratoga	404	590	375	215	2,898,869
Schenectady	1,915	4,185	2,638	1,547	15,286,773
Schoharie	190	326	189	137	1,357,865
Schuyler	231	440	226	213	1,571,027
Seneca	279	533	303	230	1,938,652
Steuben	995	1,823	990	833	6,146,889
Suffolk	10,376	18,627	9,332	9,295	131,701,234
Sullivan	684	1,344	870	474	5,342,297
Tioga	379	613	408	205	2,622,807
Tompkins	800	1,368	669	699	5,381,775
Ulster	2,108	3,868	1,980	1,889	18,028,623
Warren	247	390	220	171	2,040,758
Washington	347	588	369	219	2,688,840
Wayne	645	1,073	599	475	3,917,612
Westchester	6,554	12,776	7,446	5,329	79,199,429
Wyoming	194	315	183	133	1,198,236
Yates	163	263	160	102	1,226,606

Table A-6
FAMILY ASSISTANCE-FP
 Monthly Average Cases, Recipients, Children and Adults, and Annual Expenditures by Local District
 2015 SUMMARY

Local District	Family Assistance-FP					Total Expenditures
	Monthly Average					
	Cases	Recipients	Children	Adults		
New York State	105,918	245,200	181,353	63,848	\$809,115,342	
New York City	58,955	136,459	100,257	36,203	426,000,371	
Rest of State	46,963	108,741	81,096	27,645	383,114,971	
Albany	1,320	3,063	2,262	801	10,731,171	
Allegany	218	486	370	117	1,373,484	
Broome	1,580	3,455	2,619	837	10,992,100	
Cattaraugus	304	602	480	122	1,901,596	
Cayuga	386	895	647	248	2,854,908	
Chautauqua	1,156	2,716	1,981	735	7,525,948	
Chemung	410	839	706	133	2,721,485	
Chenango	229	474	371	102	1,439,547	
Clinton	424	804	659	145	2,707,885	
Columbia	231	534	392	142	1,771,388	
Cortland	248	549	400	149	1,778,718	
Delaware	153	322	262	61	967,567	
Dutchess	638	1,318	1,097	221	5,873,537	
Erie	6,398	15,565	11,332	4,233	42,250,419	
Essex	67	121	101	20	425,456	
Franklin	218	477	341	136	1,384,575	
Fulton	162	338	276	62	1,080,992	
Genesee	150	350	268	82	1,017,608	
Greene	160	355	266	89	1,049,448	
Hamilton	7	15	12	3	39,063	
Herkimer	260	539	416	123	1,695,828	
Jefferson	451	1,005	759	246	2,947,478	
Lewis	66	128	106	23	411,498	
Livingston	339	796	545	251	2,409,141	
Madison	189	393	303	90	1,244,560	
Monroe	5,972	14,277	10,379	3,898	44,368,277	
Montgomery	323	819	620	199	2,191,126	
Nassau	2,714	6,065	4,577	1,488	26,471,420	
Niagara	1,294	2,908	2,126	782	8,059,456	
Oneida	1,905	4,960	3,561	1,399	12,926,017	
Onondaga	3,264	7,832	5,715	2,117	22,147,127	
Ontario	392	811	618	193	2,654,835	
Orange	1,167	2,752	2,090	662	11,961,796	
Orleans	272	561	424	137	1,803,719	
Oswego	801	1,956	1,404	552	5,456,706	
Otsego	95	173	139	34	822,292	
Putnam	53	95	81	13	411,339	
Rensselaer	959	2,280	1,637	643	6,897,493	
Rockland	601	1,365	1,137	227	4,947,923	
St. Lawrence	534	1,240	910	330	3,386,165	
Saratoga	215	381	339	42	1,351,142	
Schenectady	977	2,280	1,733	547	7,816,551	
Schoharie	98	218	172	46	675,836	
Schuyler	96	235	167	68	693,742	
Seneca	122	275	206	69	813,986	
Steuben	408	924	695	229	2,565,237	
Suffolk	3,618	8,483	6,301	2,182	52,616,129	
Sullivan	360	781	637	144	2,712,063	
Tioga	239	445	371	74	1,581,569	
Tompkins	293	617	448	169	1,980,979	
Ulster	848	1,893	1,355	538	7,507,762	
Warren	124	244	197	47	885,024	
Washington	185	378	317	62	1,364,990	
Wayne	312	646	503	143	2,006,252	
Westchester	2,767	6,341	4,970	1,372	34,153,254	
Wyoming	107	205	162	43	689,084	
Yates	87	163	138	25	600,280	

Table A-7
SAFETY NET ASSISTANCE*
Monthly Average Cases, Recipients, Children and Adults, and Annual Expenditures by Local District
2015 SUMMARY

Local District	Safety Net Assistance					Total Expenditures
	Monthly Average					
	Cases	Recipients	Children	Adults		
New York State	194,087	328,362	115,301	213,077	\$1,435,468,001	
New York City	130,107	216,473	71,732	144,757	955,920,986	
Rest of State	63,980	111,889	43,569	68,320	479,547,015	
Albany	1,492	2,993	1,369	1,625	12,226,780	
Allegany	260	407	132	275	1,534,033	
Broome	2,203	3,677	1,373	2,304	13,442,787	
Cattaraugus	368	464	102	362	2,168,105	
Cayuga	502	758	236	522	3,468,495	
Chautauqua	1,535	2,915	1,215	1,700	9,075,217	
Chemung	384	544	184	359	2,518,491	
Chenango	223	309	81	228	1,167,690	
Clinton	448	595	141	454	3,333,581	
Columbia	300	449	132	318	2,189,888	
Cortland	414	544	112	433	2,690,573	
Delaware	114	139	21	118	606,623	
Dutchess	623	958	373	586	5,274,787	
Erie	8,543	17,018	7,519	9,500	48,566,286	
Essex	53	62	11	51	401,305	
Franklin	345	524	155	368	2,165,915	
Fulton	149	168	26	142	1,001,748	
Genesee	152	220	68	152	1,136,071	
Greene	249	389	129	260	1,779,577	
Hamilton	9	9	0	9	28,734	
Herkimer	270	373	95	278	1,678,604	
Jefferson	744	1,014	229	785	4,994,595	
Lewis	54	67	17	51	328,918	
Livingston	464	702	204	498	2,710,295	
Madison	214	315	104	211	1,405,874	
Monroe	8,925	16,459	7,079	9,380	55,492,578	
Montgomery	196	373	155	217	1,396,066	
Nassau	4,608	7,261	2,406	4,855	38,995,814	
Niagara	1,916	3,242	1,206	2,035	10,225,488	
Oneida	2,579	5,581	2,582	2,999	15,440,002	
Onondaga	4,091	8,105	3,617	4,488	25,084,973	
Ontario	497	673	162	511	3,677,023	
Orange	1,599	3,016	1,311	1,705	14,747,159	
Orleans	410	646	229	418	2,478,678	
Oswego	934	1,636	599	1,037	5,627,780	
Otsego	121	142	20	122	1,283,081	
Putnam	72	78	9	69	789,764	
Rensselaer	724	1,812	982	831	5,710,984	
Rockland	764	1,340	514	826	5,648,582	
St. Lawrence	779	1,299	424	875	4,519,659	
Saratoga	188	209	37	173	1,547,727	
Schenectady	938	1,905	906	999	7,470,222	
Schoharie	92	108	17	91	682,029	
Schuyler	136	205	59	146	877,285	
Seneca	157	258	97	161	1,124,666	
Steuben	587	899	295	604	3,581,652	
Suffolk	6,758	10,144	3,032	7,112	79,085,105	
Sullivan	324	563	234	330	2,630,234	
Tioga	139	168	37	131	1,041,238	
Tompkins	506	751	221	530	3,400,796	
Ulster	1,260	1,975	624	1,351	10,520,861	
Warren	124	146	23	123	1,155,734	
Washington	162	210	53	157	1,323,850	
Wayne	333	427	96	331	1,911,360	
Westchester	3,787	6,434	2,477	3,958	45,046,175	
Wyoming	87	110	21	90	509,152	
Yates	77	100	22	78	626,326	

Table A-8
TEMPORARY ASSISTANCE BY FUNDING SOURCE
 Monthly Average Cases and Recipients, and Annual Expenditures
 2015 SUMMARY

Local District	Total			Federally Participating-TANF Family Assistance-FP and Safety Net Assistance-FP			Federally Non-Participating Safety Net Assistance-FNP and Family Assistance-FNP		
	Cases	Recipients	Expenditures	Cases	Recipients	Expenditures	Cases	Recipients	Expenditures
New York State	300,005	573,563	\$2,244,583,343	107,166	248,430	\$818,900,354	192,840	325,133	\$1,425,682,989
New York City	189,062	352,932	1,381,921,357	59,135	136,848	427,010,116	129,927	216,085	954,911,241
Rest of State	110,943	220,630	862,661,986	48,031	111,582	391,890,238	62,912	109,048	470,771,748
Albany	2,812	6,057	22,957,951	1,333	3,098	10,853,312	1,479	2,959	12,104,639
Allegany	478	893	2,907,517	220	491	1,398,652	259	403	1,508,865
Broome	3,783	7,133	24,434,887	1,626	3,577	11,336,062	2,157	3,555	13,098,825
Cattaraugus	672	1,065	4,069,701	316	631	1,974,704	356	434	2,094,997
Cayuga	888	1,654	6,323,403	406	952	3,019,866	482	701	3,303,537
Chautauqua	2,691	5,631	16,601,165	1,174	2,756	7,629,210	1,518	2,876	8,971,955
Chemung	794	1,383	5,239,976	417	861	2,775,111	376	521	2,464,865
Chenango	452	783	2,607,237	233	484	1,456,311	219	299	1,150,926
Clinton	872	1,399	6,041,466	431	819	2,758,892	441	580	3,282,574
Columbia	531	983	3,961,276	237	551	1,816,549	294	432	2,144,727
Cortland	662	1,093	4,469,291	260	582	1,860,493	402	511	2,608,798
Delaware	267	461	1,574,190	153	324	969,980	114	137	604,210
Dutchess	1,260	2,276	11,148,324	644	1,335	5,963,445	617	942	5,184,879
Erie	14,942	32,583	90,816,705	6,491	15,802	42,802,850	8,451	16,781	48,013,855
Essex	120	183	826,761	68	124	432,347	51	60	394,414
Franklin	562	1,001	3,550,490	219	481	1,414,501	343	521	2,135,989
Fulton	311	507	2,082,740	165	345	1,102,250	146	162	980,490
Genesee	302	569	2,153,679	157	369	1,077,993	145	200	1,075,686
Greene	408	745	2,829,025	162	363	1,076,270	246	382	1,752,755
Hamilton	16	24	67,797	7	15	39,063	9	9	28,734
Herkimer	530	913	3,374,432	262	547	1,713,391	268	366	1,661,041
Jefferson	1,194	2,019	7,942,073	468	1,049	3,082,182	727	970	4,859,891
Lewis	120	196	740,416	67	133	424,884	53	63	315,532
Livingston	803	1,498	5,119,436	348	817	2,480,221	456	681	2,639,215
Madison	403	708	2,650,434	202	433	1,351,688	202	274	1,298,746
Monroe	14,896	30,736	99,860,855	6,327	15,227	46,775,733	8,569	15,509	53,085,122
Montgomery	519	1,192	3,587,192	327	829	2,214,439	192	363	1,372,753
Nassau	7,321	13,326	65,467,234	2,727	6,092	26,608,588	4,595	7,234	38,858,646
Niagara	3,209	6,149	18,284,944	1,369	3,102	8,517,776	1,841	3,047	9,767,168
Oneida	4,484	10,542	28,366,019	1,942	5,061	13,183,191	2,542	5,481	15,182,828
Onondaga	7,355	15,937	47,232,100	3,280	7,877	22,263,530	4,075	8,060	24,968,570
Ontario	889	1,484	6,331,858	397	824	2,716,296	492	660	3,615,562
Orange	2,766	5,768	26,708,955	1,187	2,800	12,210,748	1,579	2,968	14,498,207
Orleans	683	1,207	4,282,397	283	596	1,897,425	399	611	2,384,972
Oswego	1,735	3,592	11,084,486	833	2,063	5,695,137	902	1,528	5,389,349
Otsego	216	314	2,105,373	98	184	857,030	118	131	1,248,343
Putnam	125	172	1,201,103	53	96	429,002	71	76	772,101
Rensselaer	1,683	4,092	12,608,477	970	2,309	6,975,184	713	1,784	5,633,293
Rockland	1,365	2,704	10,596,505	607	1,379	4,991,621	759	1,326	5,604,884
St. Lawrence	1,313	2,539	7,905,824	540	1,253	3,455,283	773	1,286	4,450,541
Saratoga	404	590	2,898,869	217	385	1,372,811	186	205	1,526,058
Schenectady	1,915	4,185	15,286,773	982	2,297	7,853,242	933	1,888	7,433,531
Schoharie	190	326	1,357,865	98	218	677,863	92	108	680,002
Schuyler	231	440	1,571,027	96	235	693,742	136	205	877,285
Seneca	279	533	1,938,652	124	281	826,709	155	252	1,111,943
Steuben	995	1,823	6,146,889	409	930	2,581,321	586	893	3,565,568
Suffolk	10,376	18,627	131,701,234	3,688	8,679	53,908,056	6,688	9,948	77,793,178
Sullivan	684	1,344	5,342,297	366	795	2,772,348	319	549	2,569,949
Tioga	379	613	2,622,807	245	453	1,690,878	134	161	931,929
Tompkins	800	1,368	5,381,775	308	650	2,080,148	491	718	3,301,627
Ulster	2,108	3,868	18,028,623	857	1,912	7,608,390	1,251	1,956	10,420,233
Warren	247	390	2,040,758	129	260	922,746	118	130	1,118,012
Washington	347	588	2,688,840	192	399	1,429,534	154	190	1,259,306
Wayne	645	1,073	3,917,612	330	694	2,158,313	315	379	1,759,299
Westchester	6,554	12,776	79,199,429	2,789	6,395	34,413,375	3,765	6,381	44,786,054
Wyoming	194	315	1,198,236	109	208	697,807	86	107	500,429
Yates	163	263	1,226,606	87	163	601,745	76	99	624,861

Table A-9
SAFETY NET ASSISTANCE-FNP BY CASE CATEGORY
Monthly Average Cases and Recipients, and Annual Expenditures
2015 SUMMARY

Local District	Total			Maintenance of Effort (MOE)			Non-Maintenance of Effort (Non-MOE)*		
	Cases	Recipients	Expenditures	Cases	Recipients	Expenditures	Cases	Recipients	Expenditures
New York State	192,840	325,133	\$1,425,682,989	37,588	123,421	\$318,827,207	155,252	201,711	\$1,106,855,782
New York City	129,927	216,085	954,911,241	26,261	83,528	205,839,414	103,667	132,556	749,071,827
Rest of State	62,912	109,048	470,771,748	11,327	39,893	112,987,793	51,585	69,155	357,783,955
Albany	1,479	2,959	12,104,639	339	1,238	3,385,361	1,140	1,720	8,719,278
Allegany	259	403	1,508,865	36	115	267,599	223	287	1,241,266
Broome	2,157	3,555	13,098,825	355	1,240	2,793,290	1,802	2,315	10,305,535
Cattaraugus	356	434	2,094,997	20	67	139,357	336	367	1,955,530
Cayuga	482	701	3,303,537	47	162	388,198	435	539	2,915,339
Chautauqua	1,518	2,876	8,971,955	363	1,226	2,949,313	1,154	1,649	6,022,642
Chemung	376	521	2,464,865	30	115	236,859	346	406	2,228,006
Chenango	219	299	1,150,926	11	38	74,634	208	260	1,076,292
Clinton	441	580	3,282,574	43	133	311,935	398	446	2,970,639
Columbia	294	432	2,144,727	29	102	224,305	265	330	1,920,422
Cortland	402	511	2,608,798	26	82	193,626	376	429	2,415,172
Delaware	114	137	604,210	2	9	14,025	112	128	590,185
Dutchess	617	942	5,184,879	99	353	972,810	518	588	4,212,069
Erie	8,451	16,781	48,013,855	1,702	6,172	12,982,079	6,749	10,609	35,031,776
Essex	51	60	394,414	2	6	14,569	50	54	379,845
Franklin	343	521	2,135,989	37	113	259,079	306	407	1,876,910
Fulton	146	162	980,490	3	10	22,367	143	152	958,123
Genesee	145	200	1,075,686	15	54	121,916	130	146	953,770
Greene	246	382	1,752,755	37	124	268,530	209	258	1,484,225
Hamilton	9	9	28,734	0	0	0	9	9	28,734
Herkimer	268	366	1,661,041	26	92	206,493	242	273	1,454,548
Jefferson	727	970	4,859,891	42	137	300,038	685	832	4,559,853
Lewis	53	63	315,532	2	7	14,746	51	57	300,786
Livingston	456	681	2,639,215	50	158	388,656	406	523	2,250,559
Madison	202	274	1,298,746	24	80	196,365	178	194	1,102,381
Monroe	8,569	15,509	53,085,122	2,161	7,562	17,650,138	6,408	7,947	35,434,984
Montgomery	192	363	1,372,753	42	144	303,600	150	220	1,069,153
Nassau	4,595	7,234	38,858,646	834	2,673	10,843,393	3,761	4,562	28,015,253
Niagara	1,841	3,047	9,767,168	312	1,095	2,154,377	1,528	1,952	7,612,791
Oneida	2,542	5,481	15,182,828	461	1,818	3,560,187	2,081	3,663	11,622,641
Onondaga	4,075	8,060	24,968,570	713	2,728	5,442,663	3,362	5,333	19,525,907
Ontario	492	660	3,615,562	40	138	329,520	452	523	3,286,042
Orange	1,579	2,968	14,498,207	393	1,385	4,466,323	1,186	1,582	10,031,884
Orleans	399	611	2,384,972	52	174	424,030	348	437	1,960,942
Oswego	902	1,528	5,389,349	106	380	853,115	796	1,148	4,536,234
Otsego	118	131	1,248,343	0	1	992	118	130	1,247,351
Putnam	71	76	772,101	2	5	16,303	69	71	755,798
Rensselaer	713	1,784	5,633,293	240	870	1,808,112	473	914	3,825,181
Rockland	759	1,326	5,604,884	81	287	660,256	677	1,038	4,944,628
St. Lawrence	773	1,286	4,450,541	86	274	607,724	687	1,012	3,842,817
Saratoga	186	205	1,526,058	0	1	1,859	186	204	1,524,199
Schenectady	933	1,888	7,433,531	229	889	2,202,061	703	999	5,231,470
Schoharie	92	108	680,002	3	9	17,522	89	99	662,480
Schuyler	136	205	877,285	12	38	81,489	124	167	795,796
Seneca	155	252	1,111,943	21	73	149,542	134	179	962,401
Steuben	586	893	3,565,568	76	266	552,115	510	627	3,013,453
Suffolk	6,688	9,948	77,793,178	821	3,038	17,419,668	5,866	6,910	60,373,510
Sullivan	319	549	2,569,949	53	184	443,164	266	366	2,126,785
Tioga	134	161	931,929	8	27	80,356	125	134	851,573
Tompkins	491	718	3,301,627	53	190	371,467	438	528	2,930,160
Ulster	1,251	1,956	10,420,233	164	536	1,725,750	1,087	1,420	8,694,483
Warren	118	130	1,118,012	3	7	30,940	116	124	1,087,072
Washington	154	190	1,259,306	4	15	40,060	150	175	1,219,246
Wayne	315	379	1,759,299	19	55	142,975	296	324	1,616,324
Westchester	3,765	6,381	44,786,054	991	3,175	13,816,944	2,774	3,206	30,969,110
Wyoming	86	107	500,429	4	19	36,853	82	88	463,576
Yates	76	99	624,861	2	7	28,145	74	92	596,716

Table A-10
SUPPLEMENTAL NUTRITION ASSISTANCE PROGRAM
 Monthly Average Households and Persons, and Annual Expenditures
 2015 SUMMARY

Local District	Total			Temporary Assistance			Non-Temporary Assistance		
	Households	Persons	SNAP Benefits	Households	Persons	SNAP Benefits	Households	Persons	SNAP Benefits
New York State	1,657,573	3,019,719	\$5,050,237,676	676,078	1,024,517	\$1,884,092,001	981,496	1,995,202	\$3,166,145,675
New York City	953,439	1,702,670	2,991,056,824	440,489	669,781	1,252,444,238	512,950	1,032,890	1,738,612,586
Rest of State	704,134	1,317,049	2,059,180,852	235,589	354,736	631,647,763	468,545	962,312	1,427,533,089
Albany	19,667	36,735	56,695,971	6,520	9,994	17,718,030	13,147	26,741	38,977,941
Allegany	3,321	6,254	8,902,322	1,211	1,693	2,990,759	2,110	4,562	5,911,563
Broome	17,062	31,513	48,986,131	6,859	10,689	19,601,777	10,203	20,824	29,384,354
Cattaraugus	6,524	12,650	18,164,309	1,841	2,336	4,281,122	4,684	10,315	13,883,187
Cayuga	5,607	10,771	16,126,251	1,593	2,391	4,297,993	4,014	8,380	11,828,258
Chautauqua	14,078	26,967	41,928,717	4,587	7,628	13,410,258	9,491	19,339	28,518,459
Chemung	8,123	15,727	24,617,761	2,278	2,930	5,384,176	5,845	12,797	19,233,585
Chenango	3,905	7,595	11,021,906	1,142	1,460	2,658,447	2,764	6,135	8,363,459
Clinton	6,832	11,697	17,422,020	2,429	3,101	5,643,971	4,403	8,597	11,778,049
Columbia	3,766	6,442	9,884,185	1,344	1,823	3,306,695	2,422	4,618	6,577,490
Cortland	3,772	6,846	10,179,506	1,172	1,650	3,041,517	2,600	5,196	7,137,989
Delaware	3,263	6,447	9,271,724	881	1,085	1,920,322	2,382	5,362	7,351,402
Dutchess	13,265	23,558	37,366,678	3,800	4,850	8,861,207	9,466	18,708	28,505,471
Erie	84,425	157,182	248,033,630	29,420	48,039	86,089,642	55,005	109,144	161,943,988
Essex	2,079	3,691	5,472,717	712	798	1,472,966	1,367	2,894	3,999,751
Franklin	4,151	7,562	11,656,872	1,556	2,081	3,831,082	2,596	5,481	7,825,790
Fulton	4,962	9,158	13,682,695	1,428	1,672	3,257,468	3,534	7,486	10,425,227
Genesee	3,253	6,010	8,714,510	919	1,219	2,237,335	2,334	4,792	6,477,175
Greene	3,278	5,754	9,011,832	1,109	1,517	2,741,914	2,169	4,237	6,269,918
Hamilton	242	412	599,731	60	69	136,348	182	343	463,383
Herkimer	5,476	10,366	15,111,473	1,347	1,778	3,308,992	4,129	8,588	11,802,481
Jefferson	8,323	15,644	23,441,056	2,482	3,408	6,224,342	5,841	12,236	17,216,714
Lewis	1,844	3,580	4,876,621	433	534	920,859	1,411	3,046	3,955,762
Livingston	3,924	7,282	11,075,624	1,383	2,166	3,925,334	2,541	5,116	7,150,290
Madison	4,579	8,967	13,318,008	1,067	1,415	2,550,970	3,512	7,552	10,767,038
Monroe	66,491	122,535	196,608,105	27,641	45,368	80,291,522	38,850	77,167	116,316,583
Montgomery	4,711	9,625	14,648,248	1,483	2,289	4,050,936	3,228	7,336	10,597,312
Nassau	40,872	65,762	103,616,164	16,707	23,151	41,266,672	24,165	42,612	62,349,492
Niagara	18,064	32,411	50,543,185	6,021	9,060	16,453,824	12,043	23,351	34,089,361
Oneida	20,343	41,175	62,477,531	8,105	14,453	24,828,521	12,238	26,722	37,649,010
Onondaga	38,690	74,038	114,698,216	13,395	22,879	39,336,887	25,296	51,159	75,361,329
Ontario	5,605	10,089	15,072,335	1,743	2,395	4,453,012	3,862	7,694	10,619,323
Orange	20,114	47,112	73,670,788	6,144	9,291	16,210,049	13,971	37,821	57,460,739
Orleans	3,207	6,163	8,876,165	1,072	1,614	2,935,841	2,135	4,549	5,940,324
Oswego	9,623	19,879	29,720,567	3,055	5,113	8,994,984	6,568	14,766	20,725,583
Otsego	3,298	6,142	8,851,846	895	1,009	1,920,367	2,403	5,133	6,931,479
Putnam	1,711	2,680	4,161,702	534	582	1,042,946	1,177	2,099	3,118,756
Rensselaer	9,070	18,103	26,973,892	3,427	6,122	10,093,835	5,642	11,982	16,880,057
Rockland	17,074	47,289	73,813,588	4,073	5,550	10,137,619	13,001	41,739	63,675,969
St. Lawrence	8,448	16,487	24,106,425	3,065	4,410	7,778,248	5,383	12,077	16,328,177
Saratoga	8,735	15,301	22,462,103	1,944	2,155	4,147,040	6,791	13,146	18,315,063
Schenectady	13,155	24,702	39,764,810	4,661	7,131	12,654,983	8,493	17,571	27,109,827
Schoharie	2,038	3,766	5,632,407	536	678	1,281,540	1,502	3,087	4,350,867
Schuyler	1,278	2,498	3,559,493	367	577	1,044,756	911	1,921	2,514,737
Seneca	1,854	3,486	5,256,493	611	874	1,530,473	1,243	2,612	3,726,020
Steuben	6,104	12,195	17,118,807	2,041	2,944	5,143,316	4,063	9,251	11,975,491
Suffolk	76,180	130,303	217,227,617	21,868	30,542	55,101,540	54,312	99,761	162,126,077
Sullivan	6,307	12,433	19,680,061	1,934	2,641	4,630,049	4,373	9,792	15,050,012
Tioga	3,146	6,388	8,948,017	799	1,078	1,905,259	2,346	5,310	7,042,758
Tompkins	5,060	8,877	13,756,183	1,553	2,162	3,990,116	3,507	6,715	9,766,067
Ulster	12,073	21,294	33,921,141	4,270	6,170	11,355,539	7,803	15,124	22,565,602
Warren	4,050	7,313	10,659,228	1,102	1,293	2,438,513	2,947	6,020	8,220,715
Washington	4,052	7,708	11,201,547	1,054	1,346	2,441,445	2,998	6,362	8,760,102
Wayne	5,669	10,532	15,202,505	1,731	2,216	4,126,004	3,939	8,316	11,076,501
Westchester	48,245	86,050	143,213,245	15,290	22,196	38,196,065	32,955	63,854	105,017,180
Wyoming	1,717	3,189	4,367,583	504	640	1,154,929	1,213	2,549	3,212,654
Yates	1,429	2,716	3,808,605	390	489	897,407	1,038	2,227	2,911,198

Table A-11
SUPPLEMENTAL SECURITY INCOME
 Monthly Average Recipients, Total Annual Program Expenditures and Federal and State Shares by Local District
 2015 SUMMARY

Local District	Recipients	Expenditures		
		Total	Federal	State
New York State	711,576	\$5,045,837,836	\$4,421,764,008	\$624,073,828
New York City	429,160	3,077,256,704	2,719,037,268	358,219,436
Rest of State	277,713	1,943,134,367	1,685,188,503	257,945,864
Albany	7,523	52,770,535	46,570,823	6,199,712
Allegany	1,588	10,763,801	9,380,438	1,383,363
Broome	7,355	52,729,928	47,202,678	5,527,250
Cattaraugus	2,651	17,678,880	15,397,657	2,281,223
Cayuga	1,983	13,805,521	11,832,568	1,972,953
Chautauqua	5,131	35,560,432	31,114,656	4,445,776
Chemung	3,590	24,358,596	21,389,616	2,968,980
Chenango	1,641	10,848,483	9,609,026	1,239,457
Clinton	3,171	21,671,518	18,916,581	2,754,937
Columbia	1,711	12,596,893	10,359,534	2,237,359
Cortland	1,304	9,009,474	7,844,773	1,164,701
Delaware	1,338	8,895,707	7,646,471	1,249,236
Dutchess	6,028	42,459,327	34,811,820	7,647,507
Erie	30,669	221,044,482	194,703,781	26,340,701
Essex	1,106	7,830,606	6,244,180	1,586,426
Franklin	1,849	13,132,143	11,232,427	1,899,716
Fulton	2,295	15,818,790	13,370,326	2,448,464
Genesee	1,312	9,352,768	7,915,237	1,437,531
Greene	1,529	10,566,884	9,247,313	1,319,571
Hamilton	62	471,698	424,432	47,266
Herkimer	1,816	12,008,295	10,361,651	1,646,644
Jefferson	3,049	20,706,791	17,903,590	2,803,201
Lewis	650	4,199,176	3,699,659	499,517
Livingston	1,312	9,336,513	8,425,209	911,304
Madison	1,472	10,045,868	8,788,969	1,256,899
Monroe	27,781	206,666,452	183,510,555	23,155,897
Montgomery	2,071	14,608,094	12,735,156	1,872,938
Nassau	19,218	128,686,319	108,954,196	19,732,123
Niagara	6,422	45,309,089	39,588,887	5,720,202
Oneida	8,909	63,110,633	55,872,262	7,238,371
Onondaga	15,493	113,958,106	102,160,321	11,797,785
Ontario	2,063	13,667,571	11,985,618	1,681,953
Orange	7,458	52,077,834	45,144,241	6,933,593
Orleans	1,050	7,331,752	6,501,647	830,105
Oswego	3,599	25,821,804	23,449,411	2,372,393
Otsego	1,539	10,860,299	9,152,180	1,708,119
Putnam	928	5,867,898	4,796,658	1,071,240
Rensselaer	4,867	35,223,629	30,400,652	4,822,977
Rockland	5,617	38,596,835	29,702,870	8,893,965
St. Lawrence	4,070	28,156,881	24,979,474	3,177,407
Saratoga	3,201	20,971,331	18,246,012	2,725,319
Schenectady	5,966	43,383,611	38,529,349	4,854,262
Schoharie	765	5,226,686	4,324,779	901,907
Schuyler	479	3,149,457	2,574,951	574,506
Seneca	845	5,753,723	5,030,771	722,952
Steuben	3,238	21,846,574	19,406,620	2,439,954
Suffolk	23,321	158,627,302	132,924,048	25,703,254
Sullivan	2,849	19,113,785	15,534,213	3,579,572
Tioga	1,272	8,621,030	7,656,803	964,227
Tompkins	1,721	11,698,042	9,989,542	1,708,500
Ulster	4,551	30,807,574	26,217,632	4,589,942
Warren	1,771	11,487,301	9,901,849	1,585,452
Washington	1,734	11,514,585	10,019,558	1,495,027
Wayne	2,334	16,381,873	14,641,384	1,740,489
Westchester	19,164	128,141,681	109,185,581	18,956,100
Wyoming	719	4,979,408	4,418,322	561,086
Yates	562	3,824,099	3,259,546	564,553
Mental Hygiene	4,703	25,446,765	17,538,237	7,908,528

Table A-12
CHILD SUPPORT COLLECTIONS (IV-D)
2015 SUMMARY

Local District	Total	Curent Assistance	Former Assistance	Never Assistance
New York State	\$1,833,129,972.70	\$72,405,443.84	\$912,599,475.22	\$848,125,053.50
New York City	756,986,076.94	33,917,833.75	390,711,667.57	332,356,575.62
Rest of State	1,076,143,895.59	38,487,610.09	521,887,807.65	515,768,477.88
Albany	29,009,259.48	916,173.58	12,395,133.53	15,697,952.37
Allegany	5,989,849.30	332,574.69	3,869,523.91	1,787,750.70
Broome	16,746,121.59	1,081,369.96	9,038,482.86	6,626,268.77
Cattaraugus	10,351,458.20	405,455.92	6,000,461.62	3,945,540.66
Cayuga	9,024,791.71	385,979.62	5,396,909.94	3,241,902.15
Chautauqua	13,927,743.48	914,975.05	8,757,044.90	4,255,723.53
Chemung	9,091,120.68	376,576.04	5,595,625.33	3,118,919.31
Chenango	5,191,726.91	212,222.39	3,005,415.08	1,974,089.44
Clinton	9,970,160.16	520,197.97	4,986,488.43	4,463,473.76
Columbia	5,831,489.68	244,403.88	3,122,323.40	2,464,762.40
Cortland	4,919,930.28	222,363.74	2,936,642.00	1,760,924.54
Delaware	4,503,590.54	237,209.19	2,899,619.83	1,366,761.52
Dutchess	30,110,003.65	640,068.94	11,415,535.75	18,054,398.96
Erie	78,420,444.08	3,983,697.07	43,858,748.56	30,577,998.45
Essex	3,482,636.66	131,779.61	1,817,063.06	1,533,793.99
Franklin	5,584,216.68	224,226.80	2,881,299.04	2,478,690.84
Fulton	6,591,787.82	168,758.27	4,420,215.93	2,002,813.62
Genesee	6,105,111.09	150,966.56	3,216,875.27	2,737,269.26
Greene	4,734,753.02	149,545.59	2,429,446.48	2,155,760.95
Hamilton	299,095.09	6,133.00	179,169.34	113,792.75
Herkimer	5,839,111.33	239,333.20	3,370,669.44	2,229,108.69
Jefferson	16,077,425.94	615,646.04	6,614,939.60	8,846,840.30
Lewis	4,226,444.78	86,628.33	2,783,756.56	1,356,059.89
Livingston	6,978,792.44	405,370.77	3,941,453.50	2,631,968.17
Madison	6,106,633.77	220,503.36	3,423,158.97	2,462,971.44
Monroe	69,989,919.75	3,250,048.47	37,829,744.27	28,910,127.01
Montgomery	6,057,394.18	377,171.84	3,963,078.86	1,717,143.48
Nassau	101,926,202.74	2,020,068.57	38,213,780.88	61,692,353.29
Niagara	20,260,784.64	1,216,844.64	12,574,994.96	6,468,945.04
Oneida	18,475,271.38	1,139,584.83	10,901,297.61	6,434,388.94
Onondaga	46,030,248.35	1,704,525.13	26,473,573.36	17,852,149.86
Ontario	11,980,941.58	502,632.26	6,302,015.61	5,176,293.71
Orange	40,952,933.71	1,141,007.53	16,185,498.24	23,626,427.94
Orleans	4,399,703.93	253,764.76	2,691,390.38	1,454,548.79
Oswego	13,852,550.13	713,967.94	8,322,164.35	4,816,417.84
Otsego	4,772,385.47	125,502.89	2,300,062.42	2,346,820.16
Putnam	8,231,226.97	63,527.43	2,654,888.22	5,512,811.32
Rensselaer	19,859,271.50	1,023,708.43	8,533,501.86	10,302,061.21
Rockland	28,094,649.74	611,819.33	11,259,819.96	16,223,010.45
St. Lawrence	12,508,891.75	501,716.98	7,946,552.08	4,060,622.69
Saratoga	20,400,762.53	243,430.53	8,836,861.76	11,320,470.24
Schenectady	16,629,469.81	531,531.41	7,244,997.55	8,852,940.85
Schoharie	3,725,851.04	128,871.21	2,109,752.05	1,487,227.78
Schuyler	2,069,252.01	105,002.05	1,445,929.34	518,320.62
Seneca	3,674,260.92	151,102.28	1,910,074.54	1,613,084.10
Steuben	10,866,359.15	420,076.75	6,661,449.94	3,784,832.46
Suffolk	159,993,097.24	4,207,231.51	72,643,801.19	83,142,064.54
Sullivan	8,417,068.66	298,293.39	4,346,421.52	3,772,353.75
Tioga	5,501,975.47	295,157.43	3,135,019.16	2,071,798.88
Tompkins	7,419,030.47	376,867.88	3,696,744.57	3,345,418.02
Ulster	18,619,323.31	991,273.90	9,387,822.79	8,240,226.62
Warren	9,183,345.89	240,840.22	4,578,233.94	4,364,271.73
Washington	7,891,819.83	271,779.80	4,239,337.91	3,380,702.12
Wayne	10,801,844.16	329,777.49	5,395,085.74	5,076,980.93
Westchester	77,545,424.18	2,101,693.26	28,190,117.04	47,253,613.88
Wyoming	4,872,115.35	192,670.93	2,331,248.80	2,348,195.62
Yates	2,026,821.42	83,959.45	1,226,544.42	716,317.55