



NEW YORK STATE
OFFICE OF TEMPORARY AND DISABILITY ASSISTANCE
40 North Pearl Street, Albany, New York 12243-0001

George E. Pataki
Governor

Brian J. Wing
Commissioner

Temporary and Disability Assistance Statistics

May 2001

Temporary Assistance

Temporary Assistance recipients numbered 706,662 in May 2001, decreasing 3,345 (-0.5%) from the previous month. Related expenditures totaled \$154,128,896, increasing \$2.2 million (+1.5%) over April 2001.

Food Stamps

Recipients of Food Stamps totaled 1,327,312 in May 2001, increasing slightly over April 2001. Food Stamps expenditures totaled \$116,607,771, increasing only \$560,933 (+0.5%) over the previous month.

Supplemental Security Income

For May 2001, SSI recipients (including Mental Hygiene) totaled 622,854, increasing 4,234 (+0.7%) over the previous month. SSI expenditures totaled \$281,500,580 in May, decreasing \$1.6 million (-0.6%) from April 2001.

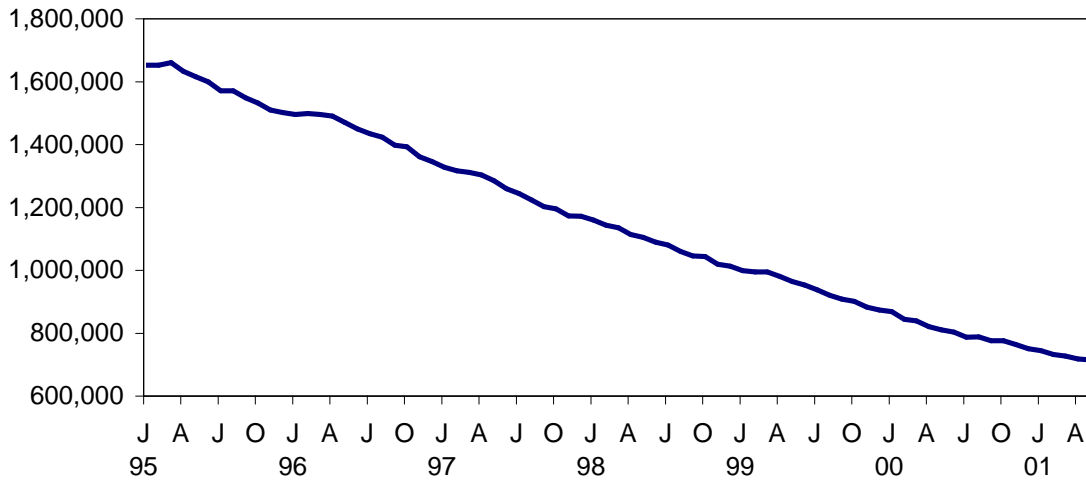
Table of Contents

Page Number

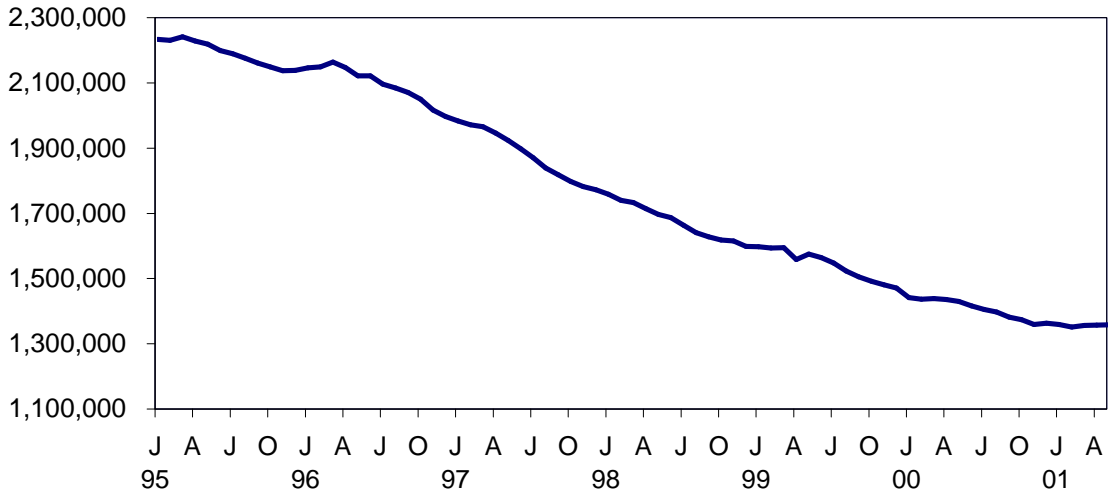
Graphs	4
Summary Tables.....	5
Temporary Assistance by Program Area	6
Temporary Assistance by Funding Source	10
Other Programs	18

NEW YORK STATE JANUARY 1995 - MAY 2001

TEMPORARY ASSISTANCE RECIPIENTS

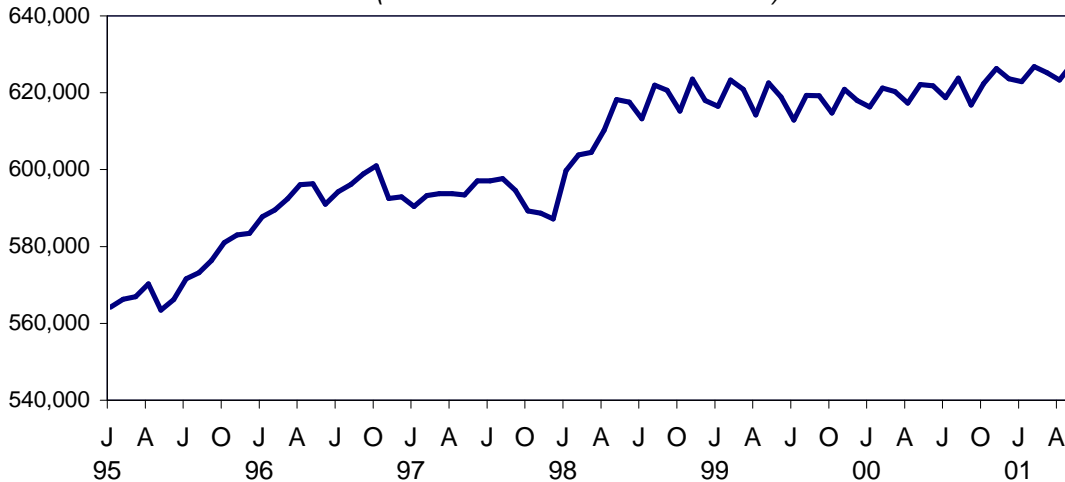


FOOD STAMPS PERSONS



SSI PERSONS

(INCLUDING MENTAL HYGIENE)



SELECTED SUMMARY PROGRAM DATA
BY REGION

Table 1
TEMPORARY AND DISABILITY ASSISTANCE CASES
May 2001

Region	Cases				
	Temporary Assistance by Program			Supplemental Security Income	Food Stamps
	Total	Family Assistance	Safety Net Assistance		
New York State	333,077	220,494	112,583	612,370	669,393
New York City	241,163	158,905	82,258	395,134	432,744
Rest of State	91,914	61,589	30,325	217,236	236,649

Table 2
TEMPORARY AND DISABILITY ASSISTANCE RECIPIENTS
May 2001

Region	Recipients				
	Temporary Assistance by Program			Supplemental Security Income	Food Stamps
	Total	Family Assistance	Safety Net Assistance		
New York State	706,662	586,095	120,567	612,370	1,327,312
New York City	508,061	421,095	86,966	395,134	841,009
Rest of State	198,601	165,000	33,601	217,236	486,303

Table 3
TEMPORARY AND DISABILITY ASSISTANCE EXPENDITURES
May 2001

Region	Expenditures				
	Temporary Assistance by Program			Supplemental Security Income	Food Stamps
	Total	Family Assistance	Safety Net Assistance		
New York State	\$154,128,896	\$115,410,388	\$38,718,508	\$277,920,596	\$116,607,771
New York City	103,781,000	79,932,000	23,849,000	185,233,840	79,533,846
Rest of State	50,347,896	35,478,388	14,869,508	92,686,756	37,073,925

Note: SSI data listed here do not include Mental Hygiene data. See Tables 17 - 19 for total SSI data.

Table 4
TEMPORARY ASSISTANCE
 Year to Year Monthly Comparison by Local District
 Cases, Recipients and Expenditures
 May 2001

Local District	May 2001			May 2000			May 1999		
	Cases	Recipients	Expenditures	Cases	Recipients	Expenditures	Cases	Recipients	Expenditures
New York State	333,077	706,662	\$154,128,896	370,572	802,472	\$ 162,856,370	429,836	956,446	\$ 184,127,957
New York City*	241,163	508,061	103,781,000	268,427	576,214	111,794,000	309,615	681,189	124,715,000
Rest of State	91,914	198,601	50,347,896	102,145	226,258	51,062,370	120,221	275,257	59,412,957
Albany	3,283	7,261	1,664,810	3,414	7,625	1,770,499	3,696	8,718	1,979,973
Allegany	489	1,106	181,628	547	1,276	195,750	754	1,829	299,719
Broome	1,920	4,157	897,476	2,305	5,171	993,717	2,743	6,526	1,221,241
Cattaraugus	629	1,333	269,197	688	1,476	260,740	835	1,911	313,408
Cayuga	403	902	166,208	453	982	186,339	500	1,118	207,643
Chautauqua	2,048	4,367	906,819	2,098	4,581	879,723	2,325	5,392	942,602
Chemung	857	1,925	346,632	939	2,174	357,131	1,039	2,480	387,586
Chenango	228	508	98,614	286	604	109,168	321	803	128,363
Clinton	606	1,149	242,702	584	1,188	243,601	611	1,265	208,048
Columbia	399	749	167,869	413	812	165,131	507	1,083	188,668
Cortland	375	820	176,548	417	963	204,564	498	1,211	249,954
Delaware	191	360	81,061	206	389	95,137	229	452	89,666
Dutchess	1,340	2,542	677,484	1,572	3,055	719,849	1,836	3,863	838,851
Erie	14,026	31,143	6,159,039	16,844	37,691	6,565,278	20,767	47,454	8,415,390
Essex	210	428	92,700	250	499	68,188	284	624	115,537
Franklin	283	549	117,801	336	668	127,111	452	927	151,024
Fulton	382	728	154,128	434	895	169,173	460	1,010	164,858
Genesee	284	587	127,375	292	623	114,698	311	740	131,174
Greene	413	815	174,287	408	801	172,213	454	977	183,590
Hamilton	14	22	5,989	12	17	4,321	23	44	6,789
Herkimer	307	621	130,601	364	777	140,390	428	959	167,885
Jefferson	1,032	2,120	452,807	1,227	2,537	496,184	1,445	3,159	562,384
Lewis	129	245	44,223	145	285	50,445	193	420	62,745
Livingston	533	1,016	236,539	469	975	207,632	598	1,238	246,964
Madison	160	289	69,887	173	314	71,278	196	395	84,108
Monroe	14,561	32,501	9,365,442	16,257	37,577	8,245,629	18,400	43,475	10,156,772
Montgomery	279	575	141,343	305	651	121,691	322	717	118,359
Nassau	4,436	8,908	2,524,131	4,964	10,142	2,672,868	6,030	12,612	3,169,074
Niagara	2,505	5,173	1,032,628	2,763	5,760	1,084,929	3,340	7,323	1,345,149
Oneida	2,330	5,689	1,006,707	2,627	6,540	1,109,120	3,274	8,346	1,369,475
Onondaga	5,851	12,870	2,659,662	5,875	13,602	2,528,056	6,703	16,180	2,963,666
Ontario	586	1,108	298,901	553	1,043	243,733	638	1,389	273,341
Orange	2,888	7,575	1,641,755	3,084	7,985	1,706,437	3,225	8,677	1,628,487
Orleans	489	1,114	218,917	486	1,096	222,115	468	1,080	190,617
Oswego	799	1,738	372,014	849	2,000	404,572	1,115	2,611	464,332
Otsego	119	190	55,523	129	202	59,260	146	272	55,515
Putnam	111	189	61,875	121	197	64,578	129	222	76,941
Rensselaer	1,141	2,521	495,134	1,184	2,654	498,296	1,352	3,113	578,425
Rockland	1,193	3,428	710,824	1,252	3,628	725,566	1,571	4,329	881,250
St.Lawrence	1,031	2,061	390,687	1,213	2,547	463,161	1,497	3,245	543,047
Saratoga	247	373	120,837	246	414	112,783	281	488	121,630
Schenectady	1,035	2,236	482,568	1,032	2,366	424,285	1,302	3,201	614,952
Schoharie	102	171	59,787	90	161	37,806	121	251	60,949
Schuyler	115	218	48,610	120	254	48,388	134	294	52,028
Seneca	181	334	72,067	189	389	72,243	181	403	66,304
Steuben	767	1,549	325,091	980	2,030	359,921	1,301	2,909	494,077
Suffolk	7,148	14,387	5,136,030	7,667	16,151	5,036,722	9,246	20,019	6,116,536
Sullivan	583	1,177	309,601	571	1,212	272,301	651	1,526	266,552
Tioga	275	580	119,420	327	712	131,037	381	902	141,443
Tompkins	689	1,310	321,264	685	1,343	337,786	753	1,515	353,081
Ulster	1,170	2,323	579,133	1,232	2,497	635,684	1,604	3,351	732,375
Warren	280	558	131,418	251	475	103,246	267	588	110,340
Washington	337	613	163,983	341	669	154,251	494	1,023	200,026
Wayne	473	827	212,697	573	1,185	246,056	711	1,563	297,367
Westchester	9,375	20,070	7,541,481	11,032	23,862	8,467,510	12,791	28,499	8,515,697
Wyoming	198	358	78,486	180	350	69,505	178	317	63,870
Yates	79	135	27,456	91	186	34,575	110	219	43,110

* Expenditures partially estimated.

Table 5
TEMPORARY ASSISTANCE
Cases, Recipients, Children, Adults and Expenditures by Local District
May 2001

Local District	Temporary Assistance				
	Cases	Recipients	Children	Adults	Expenditures
New York State	333,077	706,662	414,847	291,815	\$154,128,896
New York City*	241,163	508,061	292,543	215,518	103,781,000
Rest of State	91,914	198,601	122,304	76,297	50,347,896
Albany	3,283	7,261	4,412	2,849	1,664,810
Allegany	489	1,106	678	428	181,628
Broome	1,920	4,157	2,600	1,557	897,476
Cattaraugus	629	1,333	836	497	269,197
Cayuga	403	902	594	308	166,208
Chautauqua	2,048	4,367	2,634	1,733	906,819
Chemung	857	1,925	1,290	635	346,632
Chenango	228	508	348	160	98,614
Clinton	606	1,149	671	478	242,702
Columbia	399	749	450	299	167,869
Cortland	375	820	487	333	176,548
Delaware	191	360	225	135	81,061
Dutchess	1,340	2,542	1,622	920	677,484
Erie	14,026	31,143	18,974	12,169	6,159,039
Essex	210	428	244	184	92,700
Franklin	283	549	342	207	117,801
Fulton	382	728	417	311	154,128
Genesee	284	587	370	217	127,375
Greene	413	815	466	349	174,287
Hamilton	14	22	11	11	5,989
Herkimer	307	621	390	231	130,601
Jefferson	1,032	2,120	1,177	943	452,807
Lewis	129	245	140	105	44,223
Livingston	533	1,016	513	503	236,539
Madison	160	289	206	83	69,887
Monroe	14,561	32,501	20,050	12,451	9,365,442
Montgomery	279	575	355	220	141,343
Nassau	4,436	8,908	5,762	3,146	2,524,131
Niagara	2,505	5,173	3,130	2,043	1,032,628
Oneida	2,330	5,689	3,671	2,018	1,006,707
Onondaga	5,851	12,870	8,158	4,712	2,659,662
Ontario	586	1,108	612	496	298,901
Orange	2,888	7,575	5,051	2,524	1,641,755
Orleans	489	1,114	666	448	218,917
Oswego	799	1,738	1,137	601	372,014
Otsego	119	190	115	75	55,523
Putnam	111	189	111	78	61,875
Rensselaer	1,141	2,521	1,561	960	495,134
Rockland	1,193	3,428	2,267	1,161	710,824
St.Lawrence	1,031	2,061	1,164	897	390,687
Saratoga	247	373	277	96	120,837
Schenectady	1,035	2,236	1,543	693	482,568
Schoharie	102	171	104	67	59,787
Schuyler	115	218	130	88	48,610
Seneca	181	334	197	137	72,067
Steuben	767	1,549	898	651	325,091
Suffolk	7,148	14,387	8,749	5,638	5,136,030
Sullivan	583	1,177	762	415	309,601
Tioga	275	580	371	209	119,420
Tompkins	689	1,310	711	599	321,264
Ulster	1,170	2,323	1,522	801	579,133
Warren	280	558	314	244	131,418
Washington	337	613	360	253	163,983
Wayne	473	827	502	325	212,697
Westchester	9,375	20,070	11,693	8,377	7,541,481
Wyoming	198	358	189	169	78,486
Yates	79	135	75	60	27,456

* Expenditures partially estimated.

Table 6
FAMILY ASSISTANCE
Cases, Recipients, Children, Adults and Expenditures by Local District
May 2001

Local District	Family Assistance				
	Cases	Recipients	Children	Adults	Expenditures
New York State	220,494	586,095	409,396	176,699	\$115,410,388
New York City*	158,905	421,095	290,509	130,586	79,932,000
Rest of State	61,589	165,000	118,887	46,113	35,478,388
Albany	2,342	6,263	4,350	1,913	1,200,844
Allegany	372	983	673	310	147,828
Broome	1,345	3,512	2,523	989	626,022
Cattaraugus	447	1,136	825	311	196,152
Cayuga	316	802	580	222	130,664
Chautauqua	1,434	3,708	2,586	1,122	700,418
Chemung	674	1,722	1,258	464	272,980
Chenango	184	459	342	117	83,501
Clinton	384	909	653	256	158,288
Columbia	278	622	441	181	117,687
Cortland	255	685	471	214	125,078
Delaware	131	294	224	70	56,294
Dutchess	857	1,992	1,526	466	458,546
Erie	9,553	26,502	18,825	7,677	4,443,772
Essex	145	360	242	118	61,561
Franklin	207	472	340	132	89,540
Fulton	254	578	399	179	102,455
Genesee	192	491	360	131	88,767
Greene	294	694	461	233	128,016
Hamilton	8	16	11	5	3,412
Herkimer	222	533	382	151	95,625
Jefferson	674	1,741	1,166	575	310,585
Lewis	90	203	134	69	33,227
Livingston	329	786	489	297	154,031
Madison	111	236	197	39	47,102
Monroe	9,244	25,985	18,847	7,138	6,540,770
Montgomery	176	470	355	115	83,153
Nassau	3,029	7,334	5,585	1,749	1,807,325
Niagara	1,703	4,286	3,042	1,244	704,687
Oneida	1,667	4,935	3,584	1,351	735,799
Onondaga	4,021	10,893	7,969	2,924	1,960,555
Ontario	345	847	592	255	153,879
Orange	2,116	6,724	4,968	1,756	1,264,048
Orleans	364	982	661	321	171,459
Oswego	608	1,523	1,108	415	271,999
Otsego	67	134	112	22	25,783
Putnam	59	129	102	27	28,705
Rensselaer	876	2,248	1,555	693	364,186
Rockland	749	2,917	2,215	702	437,704
St.Lawrence	728	1,742	1,151	591	289,645
Saratoga	170	291	268	23	76,309
Schenectady	751	1,917	1,499	418	350,972
Schoharie	63	131	104	27	35,793
Schuyler	81	183	129	54	32,741
Seneca	122	269	188	81	50,652
Steuben	500	1,271	885	386	203,259
Suffolk	4,223	11,145	8,378	2,767	3,654,069
Sullivan	419	994	740	254	222,965
Tioga	218	521	367	154	96,012
Tompkins	421	1,019	681	338	181,244
Ulster	843	1,925	1,446	479	419,267
Warren	173	448	311	137	85,331
Washington	220	493	352	141	103,627
Wayne	290	630	483	147	140,554
Westchester	6,083	16,543	11,497	5,046	5,089,344
Wyoming	118	273	183	90	48,566
Yates	44	99	72	27	15,591

* Expenditures partially estimated.

Table 7
SAFETY NET ASSISTANCE
Cases, Recipients, Children, Adults and Expenditures by Local District
May 2001

Local District	Safety Net Assistance				
	Cases	Recipients	Children	Adults	Expenditures
New York State	112,583	120,567	5,451	115,116	\$38,718,508
New York City*	82,258	86,966	2,034	84,932	23,849,000
Rest of State	30,325	33,601	3,417	30,184	14,869,508
Albany	941	998	62	936	463,966
Allegany	117	123	5	118	33,800
Broome	575	645	77	568	271,454
Cattaraugus	182	197	11	186	73,045
Cayuga	87	100	14	86	35,544
Chautauqua	614	659	48	611	206,401
Chemung	183	203	32	171	73,652
Chenango	44	49	6	43	15,113
Clinton	222	240	18	222	84,414
Columbia	121	127	9	118	50,182
Cortland	120	135	16	119	51,470
Delaware	60	66	1	65	24,767
Dutchess	483	550	96	454	218,938
Erie	4,473	4,641	149	4,492	1,715,267
Essex	65	68	2	66	31,139
Franklin	76	77	2	75	28,261
Fulton	128	150	18	132	51,673
Genesee	92	96	10	86	38,608
Greene	119	121	5	116	46,271
Hamilton	6	6	0	6	2,577
Herkimer	85	88	8	80	34,976
Jefferson	358	379	11	368	142,222
Lewis	39	42	6	36	10,996
Livingston	204	230	24	206	82,508
Madison	49	53	9	44	22,785
Monroe	5,317	6,516	1,203	5,313	2,824,672
Montgomery	103	105	0	105	58,190
Nassau	1,407	1,574	177	1,397	716,806
Niagara	802	887	88	799	327,941
Oneida	663	754	87	667	270,908
Onondaga	1,830	1,977	189	1,788	699,107
Ontario	241	261	20	241	145,022
Orange	772	851	83	768	377,707
Orleans	125	132	5	127	47,458
Oswego	191	215	29	186	100,015
Otsego	52	56	3	53	29,740
Putnam	52	60	9	51	33,170
Rensselaer	265	273	6	267	130,948
Rockland	444	511	52	459	273,120
St.Lawrence	303	319	13	306	101,042
Saratoga	77	82	9	73	44,528
Schenectady	284	319	44	275	131,596
Schoharie	39	40	0	40	23,994
Schuyler	34	35	1	34	15,869
Seneca	59	65	9	56	21,415
Steuben	267	278	13	265	121,832
Suffolk	2,925	3,242	371	2,871	1,481,961
Sullivan	164	183	22	161	86,636
Tioga	57	59	4	55	23,408
Tompkins	268	291	30	261	140,020
Ulster	327	398	76	322	159,866
Warren	107	110	3	107	46,087
Washington	117	120	8	112	60,356
Wayne	183	197	19	178	72,143
Westchester	3,292	3,527	196	3,331	2,452,137
Wyoming	80	85	6	79	29,920
Yates	35	36	3	33	11,865

* Expenditures partially estimated.

Table 8
 TEMPORARY ASSISTANCE BY FUNDING SOURCE
 Cases, Recipients and Expenditures by Local District
 May 2001

Local District	Total			Federally Participating - TANF Family Assistance and Safety Net - FP			Federally Non-Participating Safety Net Assistance - FNP		
	Cases	Recipients	Expenditures	Cases	Recipients	Expenditures	Cases	Recipients	Expenditures
New York State	333,077	706,662	\$154,128,896	221,980	590,043	\$116,436,730	111,097	116,619	\$37,692,166
New York City*	241,163	508,061	103,781,000	159,097	421,573	79,983,000	82,066	86,488	23,798,000
Rest of State	91,914	198,601	50,347,896	62,883	168,470	36,453,730	29,031	30,131	13,894,166
Albany	3,283	7,261	1,664,810	2,368	6,328	1,211,569	915	933	453,241
Allegany	489	1,106	181,628	372	983	147,828	117	123	33,800
Broome	1,920	4,157	897,476	1,379	3,580	643,175	541	577	254,301
Cattaraugus	629	1,333	269,197	449	1,140	196,840	180	193	72,357
Cayuga	403	902	166,208	321	818	133,717	82	84	32,491
Chautauqua	2,048	4,367	906,819	1,461	3,759	710,774	587	608	196,045
Chemung	857	1,925	346,632	683	1,744	277,566	174	181	69,066
Chenango	228	508	98,614	185	464	83,681	43	44	14,933
Clinton	606	1,149	242,702	391	929	161,198	215	220	81,504
Columbia	399	749	167,869	278	622	117,687	121	127	50,182
Cortland	375	820	176,548	260	701	127,679	115	119	48,869
Delaware	191	360	81,061	133	296	56,673	58	64	24,388
Dutchess	1,340	2,542	677,484	887	2,056	475,460	453	486	202,024
Erie	14,026	31,143	6,159,039	9,574	26,557	4,454,960	4,452	4,586	1,704,079
Essex	210	428	92,700	146	361	61,860	64	67	30,840
Franklin	283	549	117,801	207	472	89,540	76	77	28,261
Fulton	382	728	154,128	263	605	106,413	119	123	47,715
Genesee	284	587	127,375	193	492	89,195	91	95	38,180
Greene	413	815	174,287	294	694	128,016	119	121	46,271
Hamilton	14	22	5,989	8	16	3,412	6	6	2,577
Herkimer	307	621	130,601	226	540	101,583	81	81	29,018
Jefferson	1,032	2,120	452,807	685	1,760	315,119	347	360	137,688
Lewis	129	245	44,223	90	203	33,227	39	42	10,996
Livingston	533	1,016	236,539	346	823	164,583	187	193	71,956
Madison	160	289	69,887	111	236	47,102	49	53	22,785
Monroe	14,561	32,501	9,365,442	9,826	27,596	7,032,781	4,735	4,905	2,332,661
Montgomery	279	575	141,343	176	470	83,153	103	105	58,190
Nassau	4,436	8,908	2,524,131	3,097	7,517	1,851,748	1,339	1,391	672,383
Niagara	2,505	5,173	1,032,628	1,750	4,414	725,880	755	759	306,748
Oneida	2,330	5,689	1,006,707	1,694	5,007	748,309	636	682	258,398
Onondaga	5,851	12,870	2,659,662	4,052	10,977	1,979,407	1,799	1,893	680,255
Ontario	586	1,108	298,901	352	867	157,042	234	241	141,859
Orange	2,888	7,575	1,641,755	2,142	6,800	1,280,960	746	775	360,795
Orleans	489	1,114	218,917	364	982	171,459	125	132	47,458
Oswego	799	1,738	372,014	615	1,551	274,632	184	187	97,382
Otsego	119	190	55,523	68	137	26,336	51	53	29,187
Putnam	111	189	61,875	61	134	30,770	50	55	31,105
Rensselaer	1,141	2,521	495,134	879	2,255	365,811	262	266	129,323
Rockland	1,193	3,428	710,824	770	2,980	448,453	423	448	262,371
St. Lawrence	1,031	2,061	390,687	733	1,757	292,607	298	304	98,080
Saratoga	247	373	120,837	171	294	76,636	76	79	44,201
Schenectady	1,035	2,236	482,568	769	1,956	357,246	266	280	125,322
Schoharie	102	171	59,787	63	131	35,793	39	40	23,994
Schuyler	115	218	48,610	81	183	32,741	34	35	15,869
Seneca	181	334	72,067	129	280	52,070	52	54	19,997
Steuben	767	1,549	325,091	505	1,282	205,944	262	267	119,147
Suffolk	7,148	14,387	5,136,030	4,323	11,443	3,784,095	2,825	2,944	1,351,935
Sullivan	583	1,177	309,601	423	1,005	227,533	160	172	82,068
Tioga	275	580	119,420	221	525	96,874	54	55	22,546
Tompkins	689	1,310	321,264	438	1,048	189,005	251	262	132,259
Ulster	1,170	2,323	579,133	878	2,021	438,748	292	302	140,385
Warren	280	558	131,418	173	448	85,331	107	110	46,087
Washington	337	613	163,983	222	496	104,138	115	117	59,845
Wayne	473	827	212,697	294	639	144,480	179	188	68,217
Westchester	9,375	20,070	7,541,481	6,140	16,719	5,149,607	3,235	3,351	2,391,874
Wyoming	198	358	78,486	120	278	49,693	78	80	28,793
Yates	79	135	27,456	44	99	15,591	35	36	11,865

* Expenditures partially estimated.

Table 9
 TEMPORARY ASSISTANCE TO NEEDY FAMILIES (TANF) - FP BY PROGRAM
 Cases, Recipients, Children, Adults and Expenditures by Local District
 May 2001

Local District	Family Assistance					Safety Net Assistance - FP				
	Cases	Recipients	Children	Adults	Expenditures	Cases	Recipients	Children	Adults	Expenditures
New York State	220,494	586,095	409,396	176,699	\$115,410,388	1,486	3,948	2,399	1,549	\$1,026,342
New York City*	158,905	421,095	290,509	130,586	79,932,000	192	478	266	212	51,000
Rest of State	61,589	165,000	118,887	46,113	35,478,388	1,294	3,470	2,133	1,337	975,342
Albany	2,342	6,263	4,350	1,913	1,200,844	26	65	38	27	10,725
Allegany	372	983	673	310	147,828	0	0	0	0	0
Broome	1,345	3,512	2,523	989	626,022	34	68	32	36	17,153
Cattaraugus	447	1,136	825	311	196,152	2	4	3	1	688
Cayuga	316	802	580	222	130,664	5	16	10	6	3,053
Chautauqua	1,434	3,708	2,586	1,122	700,418	27	51	33	18	10,356
Chemung	674	1,722	1,258	464	272,980	9	22	12	10	4,586
Chenango	184	459	342	117	83,501	1	5	4	1	180
Clinton	384	909	653	256	158,288	7	20	13	7	2,910
Columbia	278	622	441	181	117,687	0	0	0	0	0
Cortland	255	685	471	214	125,078	5	16	10	6	2,601
Delaware	131	294	224	70	56,294	2	2	0	2	379
Dutchess	857	1,992	1,526	466	458,546	30	64	34	30	16,914
Erie	9,553	26,502	18,825	7,677	4,443,772	21	55	30	25	11,188
Essex	145	360	242	118	61,561	1	1	0	1	299
Franklin	207	472	340	132	89,540	0	0	0	0	0
Fulton	254	578	399	179	102,455	9	27	16	11	3,958
Genesee	192	491	360	131	88,767	1	1	0	1	428
Greene	294	694	461	233	128,016	0	0	0	0	0
Hamilton	8	16	11	5	3,412	0	0	0	0	0
Herkimer	222	533	382	151	95,625	4	7	4	3	5,958
Jefferson	674	1,741	1,166	575	310,585	11	19	7	12	4,534
Lewis	90	203	134	69	33,227	0	0	0	0	0
Livingston	329	786	489	297	154,031	17	37	17	20	10,552
Madison	111	236	197	39	47,102	0	0	0	0	0
Monroe	9,244	25,985	18,847	7,138	6,540,770	582	1,611	1,028	583	492,011
Montgomery	176	470	355	115	83,153	0	0	0	0	0
Nassau	3,029	7,334	5,585	1,749	1,807,325	68	183	111	72	44,423
Niagara	1,703	4,286	3,042	1,244	704,687	47	128	76	52	21,193
Oneida	1,667	4,935	3,584	1,351	735,799	27	72	46	26	12,510
Onondaga	4,021	10,893	7,969	2,924	1,960,555	31	84	49	35	18,852
Ontario	345	847	592	255	153,879	7	20	10	10	3,163
Orange	2,116	6,724	4,968	1,756	1,264,048	26	76	46	30	16,912
Orleans	364	982	661	321	171,459	0	0	0	0	0
Oswego	608	1,523	1,108	415	271,999	7	28	19	9	2,633
Otsego	67	134	112	22	25,783	1	3	2	1	553
Putnam	59	129	102	27	28,705	2	5	3	2	2,065
Rensselaer	876	2,248	1,555	693	364,186	3	7	4	3	1,625
Rockland	749	2,917	2,215	702	437,704	21	63	42	21	10,749
St.Lawrence	728	1,742	1,151	591	289,645	5	15	7	8	2,962
Saratoga	170	291	268	23	76,309	1	3	2	1	327
Schenectady	751	1,917	1,499	418	350,972	18	39	21	18	6,274
Schoharie	63	131	104	27	35,793	0	0	0	0	0
Schuyler	81	183	129	54	32,741	0	0	0	0	0
Seneca	122	269	188	81	50,652	7	11	5	6	1,418
Steuben	500	1,271	885	386	203,259	5	11	6	5	2,685
Suffolk	4,223	11,145	8,378	2,767	3,654,069	100	298	196	102	130,026
Sullivan	419	994	740	254	222,965	4	11	5	6	4,568
Tioga	218	521	367	154	96,012	3	4	2	2	862
Tompkins	421	1,019	681	338	181,244	17	29	13	16	7,761
Ulster	843	1,925	1,446	479	419,267	35	96	56	40	19,481
Warren	173	448	311	137	85,331	0	0	0	0	0
Washington	220	493	352	141	103,627	2	3	1	2	511
Wayne	290	630	483	147	140,554	4	9	5	4	3,926
Westchester	6,083	16,543	11,497	5,046	5,089,344	57	176	112	64	60,263
Wyoming	118	273	183	90	48,566	2	5	3	2	1,127
Yates	44	99	72	27	15,591	0	0	0	0	0

* Expenditures partially estimated.

Table 10
SAFETY NET ASSISTANCE - FNP
Cases, Recipients, Children, Adults and Expenditures by Local District
May 2001

Local District	Safety Net Assistance - FNP				
	Cases	Recipients	Children	Adults	Expenditures
New York State	111,097	116,619	3,052	113,567	\$37,692,166
New York City*	82,066	86,488	1,768	84,720	23,798,000
Rest of State	29,031	30,131	1,284	28,847	13,894,166
Albany	915	933	24	909	453,241
Allegany	117	123	5	118	33,800
Broome	541	577	45	532	254,301
Cattaraugus	180	193	8	185	72,357
Cayuga	82	84	4	80	32,491
Chautauqua	587	608	15	593	196,045
Chemung	174	181	20	161	69,066
Chenango	43	44	2	42	14,933
Clinton	215	220	5	215	81,504
Columbia	121	127	9	118	50,182
Cortland	115	119	6	113	48,869
Delaware	58	64	1	63	24,388
Dutchess	453	486	62	424	202,024
Erie	4,452	4,586	119	4,467	1,704,079
Essex	64	67	2	65	30,840
Franklin	76	77	2	75	28,261
Fulton	119	123	2	121	47,715
Genesee	91	95	10	85	38,180
Greene	119	121	5	116	46,271
Hamilton	6	6	0	6	2,577
Herkimer	81	81	4	77	29,018
Jefferson	347	360	4	356	137,688
Lewis	39	42	6	36	10,996
Livingston	187	193	7	186	71,956
Madison	49	53	9	44	22,785
Monroe	4,735	4,905	175	4,730	2,332,661
Montgomery	103	105	0	105	58,190
Nassau	1,339	1,391	66	1,325	672,383
Niagara	755	759	12	747	306,748
Oneida	636	682	41	641	258,398
Onondaga	1,799	1,893	140	1,753	680,255
Ontario	234	241	10	231	141,859
Orange	746	775	37	738	360,795
Orleans	125	132	5	127	47,458
Oswego	184	187	10	177	97,382
Otsego	51	53	1	52	29,187
Putnam	50	55	6	49	31,105
Rensselaer	262	266	2	264	129,323
Rockland	423	448	10	438	262,371
St.Lawrence	298	304	6	298	98,080
Saratoga	76	79	7	72	44,201
Schenectady	266	280	23	257	125,322
Schoharie	39	40	0	40	23,994
Schuyler	34	35	1	34	15,869
Seneca	52	54	4	50	19,997
Steuben	262	267	7	260	119,147
Suffolk	2,825	2,944	175	2,769	1,351,935
Sullivan	160	172	17	155	82,068
Tioga	54	55	2	53	22,546
Tompkins	251	262	17	245	132,259
Ulster	292	302	20	282	140,385
Warren	107	110	3	107	46,087
Washington	115	117	7	110	59,845
Wayne	179	188	14	174	68,217
Westchester	3,235	3,351	84	3,267	2,391,874
Wyoming	78	80	3	77	28,793
Yates	35	36	3	33	11,865

* Expenditures partially estimated.

Table 11
SAFETY NET ASSISTANCE - FNP BY CASE SIZE CATEGORY
Cases, Recipients, Children, Adults and Expenditures by Local District
May 2001

Local District	One Person					Multi-Person				
	Cases	Recipients	Children	Adults	Expenditures	Cases	Recipients	Children	Adults	Expenditures
New York State	See Note	See Note	See Note	See Note	See Note	See Note	See Note	See Note	See Note	See Note
New York City	See Note	See Note	See Note	See Note	See Note	See Note	See Note	See Note	See Note	See Note
Rest of State	28,161	28,161	630	27,531	\$13,380,451	870	1,970	654	1,316	\$513,715
Albany	900	900	10	890	447,076	15	33	14	19	6,165
Allegany	112	112	2	110	31,730	5	11	3	8	2,070
Broome	514	514	20	494	240,623	27	63	25	38	13,678
Cattaraugus	170	170	2	168	69,036	10	23	6	17	3,321
Cayuga	80	80	2	78	31,807	2	4	2	2	684
Chautauqua	571	571	6	565	188,500	16	37	9	28	7,545
Chemung	167	167	9	158	66,129	7	14	11	3	2,937
Chenango	42	42	0	42	14,678	1	2	2	0	255
Clinton	210	210	5	205	79,894	5	10	0	10	1,610
Columbia	117	117	3	114	47,699	4	10	6	4	2,483
Cortland	111	111	5	106	47,004	4	8	1	7	1,865
Delaware	52	52	1	51	22,208	6	12	0	12	2,180
Dutchess	433	433	34	399	190,603	20	53	28	25	11,421
Erie	4,347	4,347	51	4,296	1,646,398	105	239	68	171	57,681
Essex	62	62	2	60	29,790	2	5	0	5	1,050
Franklin	75	75	2	73	27,951	1	2	0	2	310
Fulton	115	115	0	115	46,214	4	8	2	6	1,501
Genesee	88	88	4	84	37,287	3	7	6	1	893
Greene	117	117	3	114	45,436	2	4	2	2	835
Hamilton	6	6	0	6	2,577	0	0	0	0	0
Herkimer	81	81	4	77	29,018	0	0	0	0	0
Jefferson	336	336	3	333	134,050	11	24	1	23	3,638
Lewis	37	37	1	36	9,882	2	5	5	0	1,114
Livingston	181	181	4	177	70,019	6	12	3	9	1,937
Madison	45	45	5	40	21,197	4	8	4	4	1,588
Monroe	4,605	4,605	61	4,544	2,251,994	130	300	114	186	80,667
Montgomery	101	101	0	101	57,461	2	4	0	4	729
Nassau	1,296	1,296	36	1,260	651,569	43	95	30	65	20,814
Niagara	751	751	12	739	305,045	4	8	0	8	1,703
Oneida	596	596	15	581	240,295	40	86	26	60	18,103
Onondaga	1,732	1,732	77	1,655	645,594	67	161	63	98	34,661
Ontario	229	229	5	224	139,582	5	12	5	7	2,277
Orange	721	721	22	699	350,309	25	54	15	39	10,486
Orleans	118	118	1	117	45,116	7	14	4	10	2,342
Oswego	182	182	6	176	95,552	2	5	4	1	1,830
Otsego	49	49	1	48	28,176	2	4	0	4	1,011
Putnam	45	45	5	40	28,534	5	10	1	9	2,571
Rensselaer	258	258	0	258	125,915	4	8	2	6	3,408
Rockland	401	401	4	397	247,278	22	47	6	41	15,093
St. Lawrence	292	292	5	287	94,907	6	12	1	11	3,173
Saratoga	74	74	5	69	42,594	2	5	2	3	1,607
Schenectady	258	258	9	249	121,620	8	22	14	8	3,702
Schoharie	38	38	0	38	23,694	1	2	0	2	300
Schuyler	33	33	1	32	15,421	1	2	0	2	448
Seneca	50	50	3	47	19,750	2	4	1	3	247
Steuben	258	258	2	256	116,221	4	9	5	4	2,926
Suffolk	2,744	2,744	89	2,655	1,291,454	81	200	86	114	60,481
Sullivan	153	153	7	146	75,359	7	19	10	9	6,709
Tioga	53	53	2	51	22,321	1	2	0	2	225
Tompkins	243	243	8	235	126,948	8	19	9	10	5,311
Ulster	286	286	7	279	137,457	6	16	13	3	2,928
Warren	104	104	3	101	44,966	3	6	0	6	1,121
Washington	113	113	5	108	59,371	2	4	2	2	474
Wayne	172	172	8	164	64,905	7	16	6	10	3,312
Westchester	3,127	3,127	48	3,079	2,294,850	108	224	36	188	97,024
Wyoming	76	76	3	73	28,017	2	4	0	4	776
Yates	34	34	2	32	11,370	1	2	1	1	495

Note: A breakout of One-Person and Multi-Person cases is not available for New York City.

Table 12
SAFETY NET ASSISTANCE - FNP - CASH TOTAL
Cases, Recipients, Children, Adults and Expenditures by Local District
May 2001

Local District	Safety Net Assistance - FNP - Cash Total				
	Cases	Recipients	Children	Adults	Expenditures
New York State	88,957	93,979	2,455	91,524	See Note
New York City	67,550	71,633	1,412	70,221	See Note
Rest of State	21,407	22,346	1,043	21,303	\$9,844,860
Albany	913	931	24	907	452,620
Allegany	99	105	5	100	30,371
Broome	374	407	43	364	154,108
Cattaraugus	162	175	6	169	67,185
Cayuga	58	59	0	59	18,404
Chautauqua	493	513	14	499	165,400
Chemung	150	157	20	137	53,867
Chenango	35	35	0	35	11,841
Clinton	176	181	4	177	64,691
Columbia	109	114	7	107	41,349
Cortland	99	103	5	98	40,870
Delaware	54	60	1	59	21,844
Dutchess	252	282	42	240	92,078
Erie	3,233	3,344	108	3,236	1,268,747
Essex	51	54	0	54	24,669
Franklin	55	56	1	55	19,254
Fulton	77	79	0	79	33,855
Genesee	69	71	6	65	28,292
Greene	95	96	1	95	30,824
Hamilton	6	6	0	6	2,577
Herkimer	71	71	4	67	23,796
Jefferson	251	262	1	261	91,448
Lewis	28	31	6	25	6,441
Livingston	157	163	7	156	57,616
Madison	39	43	9	34	13,071
Monroe	2,550	2,671	138	2,533	1,166,717
Montgomery	93	95	0	95	55,400
Nassau	1,002	1,036	27	1,009	468,151
Niagara	426	429	11	418	161,868
Oneida	488	529	36	493	178,096
Onondaga	1,524	1,613	117	1,496	554,928
Ontario	169	176	10	166	85,393
Orange	465	484	10	474	199,950
Orleans	119	126	4	122	45,890
Oswego	151	154	10	144	73,967
Otsego	40	42	1	41	21,940
Putnam	29	33	2	31	17,998
Rensselaer	197	201	2	199	85,912
Rockland	202	222	10	212	132,605
St.Lawrence	261	267	6	261	76,200
Saratoga	65	68	6	62	37,301
Schenectady	196	209	23	186	81,242
Schoharie	34	35	0	35	15,726
Schuyler	27	28	1	27	11,965
Seneca	37	38	4	34	13,543
Steuben	206	211	7	204	97,715
Suffolk	2,277	2,393	150	2,243	903,487
Sullivan	102	107	10	97	37,433
Tioga	49	50	1	49	17,317
Tompkins	168	177	16	161	87,960
Ulster	205	210	15	195	92,500
Warren	94	97	3	94	35,902
Washington	95	97	5	92	44,741
Wayne	144	153	14	139	51,207
Westchester	2,781	2,889	84	2,805	2,139,939
Wyoming	71	73	3	70	25,070
Yates	34	35	3	32	11,579

Note: A breakout of Safety Net Assistance - FNP - Cash and Safety Net Assistance - FNP - Non-Cash expenditures is not available for New York City.

Table 13
 SAFETY NET ASSISTANCE - FNP - CASH BY CASE SIZE CATEGORY
 Cases, Recipients, Children, Adults and Expenditures by Local District
 May 2001

Local District	One Person					Multi-Person				
	Cases	Recipients	Children	Adults	Expenditures	Cases	Recipients	Children	Adults	Expenditures
New York State	See Note	See Note	See Note	See Note	See Note	See Note	See Note	See Note	See Note	See Note
New York City	See Note	See Note	See Note	See Note	See Note	See Note	See Note	See Note	See Note	See Note
Rest of State	20,659	20,659	510	20,149	\$9,402,484	748	1,687	533	1,154	\$442,376
Albany	898	898	10	888	446,455	15	33	14	19	6,165
Allegany	94	94	2	92	28,301	5	11	3	8	2,070
Broome	349	349	19	330	142,411	25	58	24	34	11,697
Cattaraugus	152	152	0	152	63,864	10	23	6	17	3,321
Cayuga	57	57	0	57	18,223	1	2	0	2	181
Chautauqua	478	478	6	472	158,142	15	35	8	27	7,258
Chemung	143	143	9	134	50,930	7	14	11	3	2,937
Chenango	35	35	0	35	11,841	0	0	0	0	0
Clinton	171	171	4	167	63,081	5	10	0	10	1,610
Columbia	106	106	3	103	39,340	3	8	4	4	2,009
Cortland	95	95	4	91	39,005	4	8	1	7	1,865
Delaware	48	48	1	47	19,664	6	12	0	12	2,180
Dutchess	235	235	18	217	82,310	17	47	24	23	9,768
Erie	3,146	3,146	51	3,095	1,218,241	87	198	57	141	50,506
Essex	49	49	0	49	23,619	2	5	0	5	1,050
Franklin	54	54	1	53	18,944	1	2	0	2	310
Fulton	75	75	0	75	33,029	2	4	0	4	826
Genesee	67	67	3	64	27,821	2	4	3	1	471
Greene	94	94	1	93	30,526	1	2	0	2	298
Hamilton	6	6	0	6	2,577	0	0	0	0	0
Herkimer	71	71	4	67	23,796	0	0	0	0	0
Jefferson	242	242	1	241	88,534	9	20	0	20	2,914
Lewis	26	26	1	25	5,327	2	5	5	0	1,114
Livingston	151	151	4	147	55,679	6	12	3	9	1,937
Madison	35	35	5	30	11,483	4	8	4	4	1,588
Monroe	2,457	2,457	59	2,398	1,113,226	93	214	79	135	53,491
Montgomery	91	91	0	91	54,671	2	4	0	4	729
Nassau	969	969	18	951	453,527	33	67	9	58	14,624
Niagara	423	423	11	412	160,585	3	6	0	6	1,283
Oneida	452	452	14	438	161,416	36	77	22	55	16,680
Onondaga	1,462	1,462	58	1,404	522,827	62	151	59	92	32,101
Ontario	164	164	5	159	83,116	5	12	5	7	2,277
Orange	447	447	4	443	191,779	18	37	6	31	8,171
Orleans	112	112	0	112	43,548	7	14	4	10	2,342
Oswego	149	149	6	143	72,137	2	5	4	1	1,830
Otsego	38	38	1	37	20,929	2	4	0	4	1,011
Putnam	25	25	2	23	15,719	4	8	0	8	2,279
Rensselaer	193	193	0	193	82,504	4	8	2	6	3,408
Rockland	185	185	4	181	120,320	17	37	6	31	12,285
St.Lawrence	255	255	5	250	73,027	6	12	1	11	3,173
Saratoga	63	63	4	59	35,694	2	5	2	3	1,607
Schenectady	189	189	9	180	77,984	7	20	14	6	3,258
Schoharie	33	33	0	33	15,426	1	2	0	2	300
Schuyler	26	26	1	25	11,517	1	2	0	2	448
Seneca	36	36	3	33	13,335	1	2	1	1	208
Steuben	202	202	2	200	94,789	4	9	5	4	2,926
Suffolk	2,199	2,199	69	2,130	844,893	78	194	81	113	58,594
Sullivan	97	97	7	90	34,099	5	10	3	7	3,334
Tioga	48	48	1	47	17,092	1	2	0	2	225
Tompkins	162	162	7	155	83,629	6	15	9	6	4,331
Ulster	201	201	6	195	89,972	4	9	9	0	2,528
Warren	91	91	3	88	34,781	3	6	0	6	1,121
Washington	93	93	3	90	44,267	2	4	2	2	474
Wayne	137	137	8	129	47,895	7	16	6	10	3,312
Westchester	2,681	2,681	48	2,633	2,049,259	100	208	36	172	90,680
Wyoming	69	69	3	66	24,294	2	4	0	4	776
Yates	33	33	2	31	11,084	1	2	1	1	495

Note: A breakout of One-Person and Multi-Person cases is not available for New York City.

Table 14
SAFETY NET ASSISTANCE - FNP - NON-CASH TOTAL
Cases, Recipients, Children, Adults and Expenditures by Local District
May 2001

Local District	Safety Net Assistance - FNP - Non-Cash Total				
	Cases	Recipients	Children	Adults	Expenditures
New York State	22,140	22,640	597	22,043	See Note
New York City	14,516	14,855	356	14,499	See Note
Rest of State	7,624	7,785	241	7,544	\$4,049,306
Albany	2	2	0	2	621
Allegany	18	18	0	18	3,429
Broome	167	170	2	168	100,193
Cattaraugus	18	18	2	16	5,172
Cayuga	24	25	4	21	14,087
Chautauqua	94	95	1	94	30,645
Chemung	24	24	0	24	15,199
Chenango	8	9	2	7	3,092
Clinton	39	39	1	38	16,813
Columbia	12	13	2	11	8,833
Cortland	16	16	1	15	7,999
Delaware	4	4	0	4	2,544
Dutchess	201	204	20	184	109,946
Erie	1,219	1,242	11	1,231	435,332
Essex	13	13	2	11	6,171
Franklin	21	21	1	20	9,007
Fulton	42	44	2	42	13,860
Genesee	22	24	4	20	9,888
Greene	24	25	4	21	15,447
Hamilton	0	0	0	0	0
Herkimer	10	10	0	10	5,222
Jefferson	96	98	3	95	46,240
Lewis	11	11	0	11	4,555
Livingston	30	30	0	30	14,340
Madison	10	10	0	10	9,714
Monroe	2,185	2,234	37	2,197	1,165,944
Montgomery	10	10	0	10	2,790
Nassau	337	355	39	316	204,232
Niagara	329	330	1	329	144,880
Oneida	148	153	5	148	80,302
Onondaga	275	280	23	257	125,327
Ontario	65	65	0	65	56,466
Orange	281	291	27	264	160,845
Orleans	6	6	1	5	1,568
Oswego	33	33	0	33	23,415
Otsego	11	11	0	11	7,247
Putnam	21	22	4	18	13,107
Rensselaer	65	65	0	65	43,411
Rockland	221	226	0	226	129,766
St.Lawrence	37	37	0	37	21,880
Saratoga	11	11	1	10	6,900
Schenectady	70	71	0	71	44,080
Schoharie	5	5	0	5	8,268
Schuyler	7	7	0	7	3,904
Seneca	15	16	0	16	6,454
Steuben	56	56	0	56	21,432
Suffolk	548	551	25	526	448,448
Sullivan	58	65	7	58	44,635
Tioga	5	5	1	4	5,229
Tompkins	83	85	1	84	44,299
Ulster	87	92	5	87	47,885
Warren	13	13	0	13	10,185
Washington	20	20	2	18	15,104
Wayne	35	35	0	35	17,010
Westchester	454	462	0	462	251,935
Wyoming	7	7	0	7	3,723
Yates	1	1	0	1	286

Note: A breakout of Safety Net Assistance - FNP - Cash and Safety Net Assistance - FNP - Non-Cash expenditures is not available for New York City.

Table 15
SAFETY NET ASSISTANCE - FNP - NON-CASH BY CASE SIZE CATEGORY
Cases, Recipients, Children, Adults and Expenditures by Local District
May 2001

Local District	One Person					Multi-Person				
	Cases	Recipients	Children	Adults	Expenditures	Cases	Recipients	Children	Adults	Expenditures
New York State	See Note	See Note	See Note	See Note	See Note	See Note	See Note	See Note	See Note	See Note
New York City	See Note	See Note	See Note	See Note	See Note	See Note	See Note	See Note	See Note	See Note
Rest of State	7,502	7,502	120	7,382	\$3,977,967	122	283	121	162	\$71,339
Albany	2	2	0	2	621	0	0	0	0	0
Allegany	18	18	0	18	3,429	0	0	0	0	0
Broome	165	165	1	164	98,212	2	5	1	4	1,981
Cattaraugus	18	18	2	16	5,172	0	0	0	0	0
Cayuga	23	23	2	21	13,584	1	2	2	0	503
Chautauqua	93	93	0	93	30,358	1	2	1	1	287
Chemung	24	24	0	24	15,199	0	0	0	0	0
Chenango	7	7	0	7	2,837	1	2	2	0	255
Clinton	39	39	1	38	16,813	0	0	0	0	0
Columbia	11	11	0	11	8,359	1	2	2	0	474
Cortland	16	16	1	15	7,999	0	0	0	0	0
Delaware	4	4	0	4	2,544	0	0	0	0	0
Dutchess	198	198	16	182	108,293	3	6	4	2	1,653
Erie	1,201	1,201	0	1,201	428,157	18	41	11	30	7,175
Essex	13	13	2	11	6,171	0	0	0	0	0
Franklin	21	21	1	20	9,007	0	0	0	0	0
Fulton	40	40	0	40	13,185	2	4	2	2	675
Genesee	21	21	1	20	9,466	1	3	3	0	422
Greene	23	23	2	21	14,910	1	2	2	0	537
Hamilton	0	0	0	0	0	0	0	0	0	0
Herkimer	10	10	0	10	5,222	0	0	0	0	0
Jefferson	94	94	2	92	45,516	2	4	1	3	724
Lewis	11	11	0	11	4,555	0	0	0	0	0
Livingston	30	30	0	30	14,340	0	0	0	0	0
Madison	10	10	0	10	9,714	0	0	0	0	0
Monroe	2,148	2,148	2	2,146	1,138,768	37	86	35	51	27,176
Montgomery	10	10	0	10	2,790	0	0	0	0	0
Nassau	327	327	18	309	198,042	10	28	21	7	6,190
Niagara	328	328	1	327	144,460	1	2	0	2	420
Oneida	144	144	1	143	78,879	4	9	4	5	1,423
Onondaga	270	270	19	251	122,767	5	10	4	6	2,560
Ontario	65	65	0	65	56,466	0	0	0	0	0
Orange	274	274	18	256	158,530	7	17	9	8	2,315
Orleans	6	6	1	5	1,568	0	0	0	0	0
Oswego	33	33	0	33	23,415	0	0	0	0	0
Otsego	11	11	0	11	7,247	0	0	0	0	0
Putnam	20	20	3	17	12,815	1	2	1	1	292
Rensselaer	65	65	0	65	43,411	0	0	0	0	0
Rockland	216	216	0	216	126,958	5	10	0	10	2,808
St.Lawrence	37	37	0	37	21,880	0	0	0	0	0
Saratoga	11	11	1	10	6,900	0	0	0	0	0
Schenectady	69	69	0	69	43,636	1	2	0	2	444
Schoharie	5	5	0	5	8,268	0	0	0	0	0
Schuyler	7	7	0	7	3,904	0	0	0	0	0
Seneca	14	14	0	14	6,415	1	2	0	2	39
Steuben	56	56	0	56	21,432	0	0	0	0	0
Suffolk	545	545	20	525	446,561	3	6	5	1	1,887
Sullivan	56	56	0	56	41,260	2	9	7	2	3,375
Tioga	5	5	1	4	5,229	0	0	0	0	0
Tompkins	81	81	1	80	43,319	2	4	0	4	980
Ulster	85	85	1	84	47,485	2	7	4	3	400
Warren	13	13	0	13	10,185	0	0	0	0	0
Washington	20	20	2	18	15,104	0	0	0	0	0
Wayne	35	35	0	35	17,010	0	0	0	0	0
Westchester	446	446	0	446	245,591	8	16	0	16	6,344
Wyoming	7	7	0	7	3,723	0	0	0	0	0
Yates	1	1	0	1	286	0	0	0	0	0

Note: A breakout of One-Person and Multi-Person cases is not available for New York City.

Table 16
FOOD STAMPS
Households, Persons and Value of Food Stamps Benefits by Local District
May 2001

Local District	Total			Temporary Assistance			Non-Temporary Assistance		
	Households	Persons	Food Stamps Benefits	Households	Persons	Food Stamps Benefits	Households	Persons	Food Stamps Benefits
New York State	669,393	1,327,312	\$116,607,771	477,642	863,732	\$82,557,709	191,751	463,580	\$34,050,062
New York City	432,744	841,009	79,533,846	352,756	655,570	64,832,870	79,988	185,439	14,700,976
Rest of State	236,649	486,303	37,073,925	124,886	208,162	17,724,839	111,763	278,141	19,349,086
Albany	8,181	16,557	1,281,178	4,762	8,282	713,283	3,419	8,275	567,895
Allegany	1,744	3,541	247,911	847	1,334	105,912	897	2,207	141,999
Broome	5,321	10,300	765,507	2,877	4,582	390,930	2,444	5,718	374,577
Cattaraugus	2,711	5,373	371,544	1,131	1,625	130,679	1,580	3,748	240,865
Cayuga	1,937	4,128	304,203	745	1,074	85,738	1,192	3,054	218,465
Chautauqua	5,079	10,662	812,413	2,741	4,635	417,924	2,338	6,027	394,489
Chemung	2,420	5,085	368,208	1,213	1,937	157,840	1,207	3,148	210,368
Chenango	1,527	3,234	230,968	476	680	56,545	1,051	2,554	174,423
Clinton	2,818	5,325	385,997	1,301	1,641	129,933	1,517	3,684	256,064
Columbia	1,314	2,387	179,374	624	878	76,254	690	1,509	103,120
Cortland	1,337	2,704	209,568	627	967	80,454	710	1,737	129,114
Delaware	1,218	2,246	153,704	482	590	46,184	736	1,656	107,520
Dutchess	3,339	5,952	456,658	1,592	2,393	208,070	1,747	3,559	248,588
Erie	35,713	72,635	5,685,749	19,602	33,449	3,009,276	16,111	39,186	2,676,473
Essex	1,092	2,024	132,395	506	669	47,763	586	1,355	84,632
Franklin	1,522	3,076	213,541	647	846	63,126	875	2,230	150,415
Fulton	1,748	3,621	276,141	756	1,030	88,626	992	2,591	187,515
Genesee	1,133	2,277	162,043	503	728	60,940	630	1,549	101,103
Greene	1,253	2,439	189,170	594	872	79,800	659	1,567	109,370
Hamilton	151	220	10,957	25	29	1,997	126	191	8,960
Herkimer	1,814	3,797	272,200	629	853	64,308	1,185	2,944	207,892
Jefferson	3,452	7,584	554,961	1,584	2,452	197,858	1,868	5,132	357,103
Lewis	775	1,667	116,464	267	353	25,229	508	1,314	91,235
Livingston	1,542	2,918	218,975	705	1,100	98,654	837	1,818	120,321
Madison	1,375	2,778	210,385	516	602	45,695	859	2,176	164,690
Monroe	25,457	54,543	4,175,350	15,616	29,662	2,533,741	9,841	24,881	1,641,609
Montgomery	1,767	3,936	306,425	611	814	68,941	1,156	3,122	237,484
Nassau	9,611	16,798	1,313,856	6,056	9,417	796,796	3,555	7,381	517,060
Niagara	5,934	11,871	905,375	3,333	5,662	479,714	2,601	6,209	425,661
Oneida	8,801	18,633	1,410,960	3,916	6,312	530,112	4,885	12,321	880,848
Onondaga	12,505	27,664	2,178,662	6,667	12,309	1,062,393	5,838	15,355	1,116,269
Ontario	2,086	3,806	273,993	940	1,337	114,023	1,146	2,469	159,970
Orange	7,132	18,177	1,474,085	3,209	6,683	592,694	3,923	11,494	881,391
Orleans	1,224	2,699	203,241	584	1,046	93,037	640	1,653	110,204
Oswego	3,307	7,801	580,783	1,311	2,003	165,777	1,996	5,798	415,006
Otsego	1,171	2,124	144,633	427	470	34,182	744	1,654	110,451
Putnam	475	664	42,449	266	332	22,074	209	332	20,375
Rensselaer	3,662	7,454	589,377	1,758	2,801	246,191	1,904	4,653	343,186
Rockland	4,650	14,765	1,141,209	1,863	3,667	248,350	2,787	11,098	892,859
St. Lawrence	3,367	6,885	495,525	1,607	2,377	195,475	1,760	4,508	300,050
Saratoga	2,557	4,815	352,984	861	928	69,297	1,696	3,887	283,687
Schenectady	3,952	8,509	645,974	1,658	2,524	209,906	2,294	5,985	436,068
Schoharie	735	1,458	102,442	270	315	24,041	465	1,143	78,401
Schuyler	404	787	54,834	187	262	21,110	217	525	33,724
Seneca	813	1,511	104,889	319	444	35,765	494	1,067	69,124
Steuben	2,577	5,371	389,429	1,245	1,886	156,277	1,332	3,485	233,152
Suffolk	13,960	25,166	1,920,572	8,907	14,169	1,171,078	5,053	10,997	749,494
Sullivan	1,988	3,912	275,867	943	1,349	108,591	1,045	2,563	167,276
Tioga	918	1,957	137,335	423	633	53,119	495	1,324	84,216
Tompkins	1,845	3,508	254,426	958	1,465	115,904	887	2,043	138,522
Ulster	3,438	6,180	446,543	1,850	2,764	223,410	1,588	3,416	223,133
Warren	1,546	2,920	217,473	754	1,121	89,894	792	1,799	127,579
Washington	1,511	2,967	212,032	634	839	65,798	877	2,128	146,234
Wayne	2,093	3,666	261,508	932	1,197	100,190	1,161	2,469	161,318
Westchester	15,237	30,594	2,464,106	10,454	19,017	1,649,311	4,783	11,577	814,795
Wyoming	718	1,379	100,548	330	449	39,005	388	930	61,543
Yates	692	1,253	86,826	245	307	25,625	447	946	61,201

Note: Food Stamps households containing only SSI recipients are counted as TA in accordance with Federal reporting requirements.

Note: Rest of State data does not include the following FAP data: 71 households, 85 persons, and \$8,019 in expenditures.

Table 17
SUPPLEMENTAL SECURITY INCOME
 Recipients, Total Program Expenditures, Federal and State Shares, by Local District
 May 2001

Local District	Expenditures			
	Recipients	Total	Federal	State
New York State*	622,854	\$281,500,580	\$233,888,575	\$47,612,005
New York City	395,134	185,233,840	157,529,854	27,703,986
Rest of State	217,236	92,686,756	74,032,932	18,653,824
Albany	6,325	2,704,489	2,139,367	565,122
Allegany	1,453	642,360	520,518	121,842
Broome	5,000	2,216,264	1,824,107	392,157
Cattaraugus	2,332	996,428	815,279	181,149
Cayuga	1,720	725,461	564,145	161,316
Chautauqua	3,847	1,645,933	1,332,496	313,437
Chemung	2,726	1,154,730	952,817	201,913
Chenango	1,305	498,558	414,320	84,238
Clinton	2,451	1,016,660	821,536	195,124
Columbia	1,510	608,624	463,458	145,166
Cortland	1,198	519,697	418,049	101,648
Delaware	1,164	439,864	347,812	92,052
Dutchess	4,285	1,757,701	1,320,042	437,659
Erie	25,011	11,198,363	9,130,880	2,067,483
Essex	947	388,265	279,794	108,471
Franklin	1,576	639,453	507,470	131,983
Fulton	1,645	645,888	509,077	136,811
Genesee	974	360,718	280,083	80,635
Greene	1,070	431,678	343,095	88,583
Hamilton	78	27,057	22,602	4,455
Herkimer	1,537	624,013	505,424	118,589
Jefferson	2,813	1,171,370	951,161	220,209
Lewis	637	250,721	203,400	47,321
Livingston	902	372,648	308,853	63,795
Madison	1,211	486,186	381,706	104,480
Monroe	17,403	7,897,691	6,429,278	1,468,413
Montgomery	1,280	508,685	404,513	104,172
Nassau	16,727	7,055,731	5,469,039	1,586,692
Niagara	4,793	2,098,208	1,680,598	417,610
Oneida	7,076	3,055,901	2,505,000	550,901
Onondaga	11,116	4,858,710	4,050,846	807,864
Ontario	1,534	624,548	499,432	125,116
Orange	5,916	2,460,621	1,988,813	471,808
Orleans	902	361,773	300,533	61,240
Oswego	2,861	1,181,603	989,464	192,139
Otsego	1,289	536,518	402,061	134,457
Putnam	740	310,519	224,795	85,724
Rensselaer	3,067	1,319,979	1,048,630	271,349
Rockland	4,419	1,887,243	1,358,688	528,555
St.Lawrence	3,564	1,512,533	1,253,742	258,791
Saratoga	2,481	955,163	749,076	206,087
Schenectady	3,704	1,575,544	1,272,831	302,713
Schoharie	705	306,543	222,552	83,991
Schuyler	493	197,747	155,461	42,286
Seneca	699	261,480	208,349	53,131
Steuben	2,849	1,204,156	996,695	207,461
Suffolk	20,773	8,767,588	6,713,925	2,053,663
Sullivan	2,511	1,078,629	801,445	277,184
Tioga	981	397,408	338,347	59,061
Tompkins	1,478	614,675	482,186	132,489
Ulster	3,973	1,694,902	1,354,991	339,911
Warren	1,432	535,966	433,842	102,124
Washington	1,393	541,332	435,387	105,945
Wayne	1,790	756,302	605,924	150,378
Westchester	14,497	6,167,922	4,952,861	1,215,061
Wyoming	612	252,950	203,705	49,245
Yates	461	185,057	142,432	42,625
Mental Hygiene	10,484	3,579,984	2,325,789	1,254,195

* Only NYS includes Mental Hygiene

Table 18
SUPPLEMENTAL SECURITY INCOME
 SSI Recipients by Living Arrangement and Location
 May 2001

Living Arrangement	New York State	New York City	Rest of State	Mental Hygiene
Living Alone	323,654	221,868	101,729	57
Living With Others	210,129	132,178	77,926	25
Living in Household of Another	24,403	15,405	8,997	1
Congregate Care Level I	5,935	605	500	4,830
Congregate Care Level II	36,539	14,171	21,843	525
Congregate Care Level III	236	69	167	0
Title XIX Institution	21,958	10,838	6,074	5,046
Total	622,854	395,134	217,236	10,484

Table 19
SUPPLEMENTAL SECURITY INCOME
 SSI Recipients by Living Arrangement and Category of Assistance
 May 2001

Living Arrangement	Total	Category of Assistance		
		Aged	Blind	Disabled
Living Alone	323,654	101,793	1,724	220,137
Living With Others	210,129	17,570	1,123	191,436
Living in Household of Another	24,403	10,231	156	14,016
Congregate Care Level I	5,935	335	28	5,572
Congregate Care Level II	36,539	5,351	182	31,006
Congregate Care Level III	236	0	1	235
Title XIX Institution	21,958	3,850	131	17,977
Total	622,854	139,130	3,345	480,379

Table 20
CHILD SUPPORT COLLECTIONS (IV-D)
May 2001

Local District	Total	Current Assistance	Former Assistance	Never Assistance
New York State	\$107,010,946	\$12,622,311	\$41,921,134	\$52,467,501
New York City	40,739,563	7,881,707	16,855,905	16,001,951
Rest of State	66,271,383	4,740,604	25,065,229	36,465,550
Albany	1,882,812	112,979	577,590	1,192,243
Allegany	425,903	42,801	240,681	142,421
Broome	1,227,933	80,006	507,498	640,429
Cattaraugus	734,473	56,182	392,721	285,570
Cayuga	617,474	25,717	227,881	363,876
Chautauqua	1,194,082	126,234	687,561	380,287
Chemung	803,545	55,289	336,491	411,765
Chenango	410,664	23,029	140,573	247,062
Clinton	641,552	34,146	292,659	314,747
Columbia	388,016	15,395	162,277	210,344
Cortland	406,244	28,261	165,003	212,980
Delaware	347,682	14,572	128,502	204,608
Dutchess	1,840,840	87,426	553,603	1,199,811
Erie	4,764,519	478,163	2,505,571	1,780,785
Essex	270,878	11,126	156,211	103,541
Franklin	443,926	15,615	209,503	218,808
Fulton	468,581	19,951	187,668	260,962
Genesee	422,202	29,701	155,139	237,362
Greene	356,178	18,184	130,945	207,049
Hamilton	35,246	113	15,819	19,314
Herkimer	533,026	23,826	230,725	278,475
Jefferson	951,983	58,480	385,256	508,247
Lewis	206,525	5,488	80,612	120,425
Livingston	526,018	28,864	189,619	307,535
Madison	434,155	11,496	189,093	233,566
Monroe	4,611,326	590,442	2,024,480	1,996,404
Montgomery	403,508	21,384	179,413	202,711
Nassau	5,536,174	269,804	1,380,331	3,886,039
Niagara	1,475,930	127,371	788,632	559,927
Oneida	1,215,701	112,943	579,559	523,199
Onondaga	3,195,676	230,236	1,498,192	1,467,248
Ontario	784,996	41,858	285,262	457,876
Orange	2,235,167	164,869	643,386	1,426,912
Orleans	300,247	21,630	155,106	123,511
Oswego	1,061,197	52,228	543,597	465,372
Otsego	370,041	11,820	107,330	250,891
Putnam	455,253	5,731	72,871	376,651
Rensselaer	1,170,497	51,692	435,046	683,759
Rockland	1,483,371	80,752	395,444	1,007,175
St. Lawrence	810,334	45,617	427,814	336,903
Saratoga	1,180,045	22,018	248,555	909,472
Schenectady	1,084,348	56,301	332,068	695,979
Schoharie	262,453	14,415	99,981	148,057
Schuyler	131,065	3,534	47,931	79,600
Seneca	283,700	7,732	104,927	171,041
Steuben	717,462	44,190	350,147	323,125
Suffolk	8,338,443	575,274	2,528,937	5,234,232
Sullivan	456,329	36,833	195,737	223,759
Tioga	378,255	24,412	182,058	171,785
Tompkins	522,661	29,230	236,754	256,677
Ulster	1,083,994	51,337	350,473	682,184
Warren	590,050	19,615	190,411	380,024
Washington	524,276	29,478	184,004	310,794
Wayne	750,596	26,892	241,922	481,782
Westchester	4,034,593	545,311	1,206,363	2,282,919
Wyoming	314,352	16,372	127,943	170,037
Yates	174,886	6,239	71,354	97,293

Note: Effective February 1999, collection amounts include collections made on behalf of other states.