



NEW YORK STATE
OFFICE OF TEMPORARY AND DISABILITY ASSISTANCE
40 North Pearl Street, Albany, New York 12243-0001

George E. Pataki
Governor

Brian J. Wing
Commissioner

Temporary and Disability Assistance Statistics

June 2001

Temporary Assistance

Recipients of Temporary Assistance totaled 692,489 in June 2001, decreasing 14,173 (-2.0%) from the previous month. Temporary Assistance expenditures totaled \$148,382,245 in June, decreasing \$5.7 million (-3.7%) from May 2001.

For the period January - June 2001, Temporary Assistance recipients have averaged 714,859 per month. This monthly average is a decrease of 108,484 (-13.2%) from the monthly average for the same period a year ago. Temporary Assistance expenditures totaled \$920.7 million for the first six months of calendar year 2001, decreasing \$89.8 million (-8.9%) from comparable expenditures in 2000. The 2001 expenditures are distributed as follows: \$695.3 million for Family Assistance, and \$225.4 million for Safety Net Assistance.

Food Stamps

Food Stamps recipients totaled 1,324,984 in June 2001, decreasing 2,358 (-0.2%) from May 2001. Related expenditures totaled \$116,372,049 in June, decreasing \$235,722 (-0.2%) from the previous month.

Monthly average Food Stamps recipients for the first six months of 2001 are 1,325,581, decreasing 76,848 (-5.5%) from the same average a year ago. Food Stamps expenditures totaled \$687,699,832 thus far in 2001, increasing \$5.6 million (+0.8%) over the same period last year.

Supplemental Security Income

SSI recipients (including Mental Hygiene) totaled 622,970 in June 2001, increasing slightly over the previous month, while SSI expenditures totaled \$281,355,203 in June.

For the first six months of 2001, SSI recipients (including Mental Hygiene) averaged 620,880, increasing 5,732 (+0.9%) over the January - June time period in 2000. SSI expenditures totaled \$1.7 billion for the first six months of 2001, increasing \$53.7 million (+3.3%) over 2000.

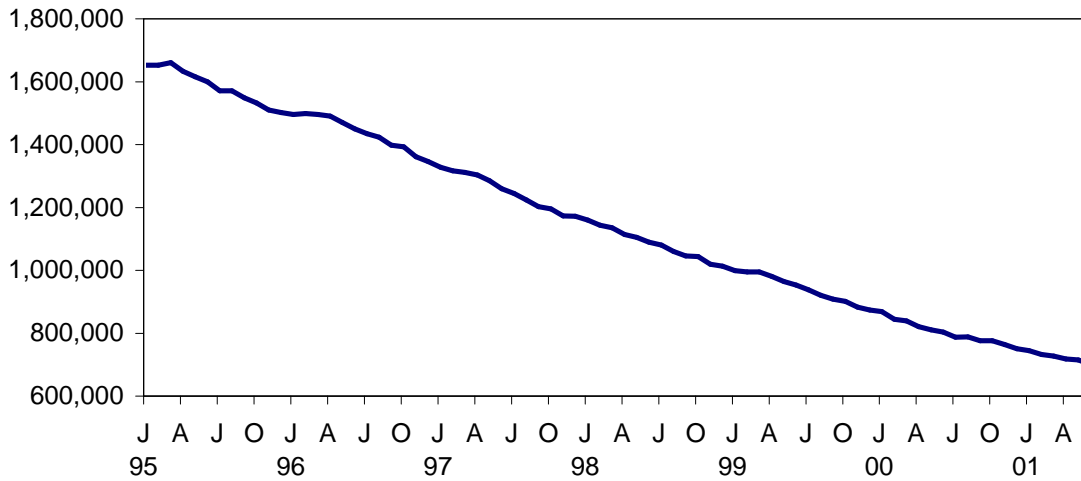
Table of Contents

Page Number

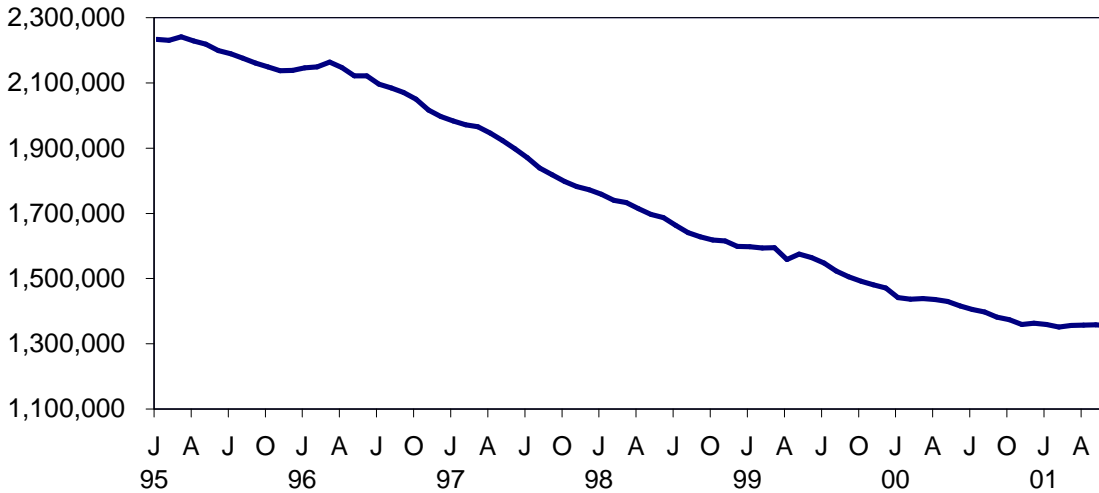
Graphs	4
Summary Tables.....	5
Temporary Assistance by Program Area	6
Temporary Assistance by Funding Source	10
Other Programs	18

NEW YORK STATE JANUARY 1995 - JUNE 2001

TEMPORARY ASSISTANCE RECIPIENTS

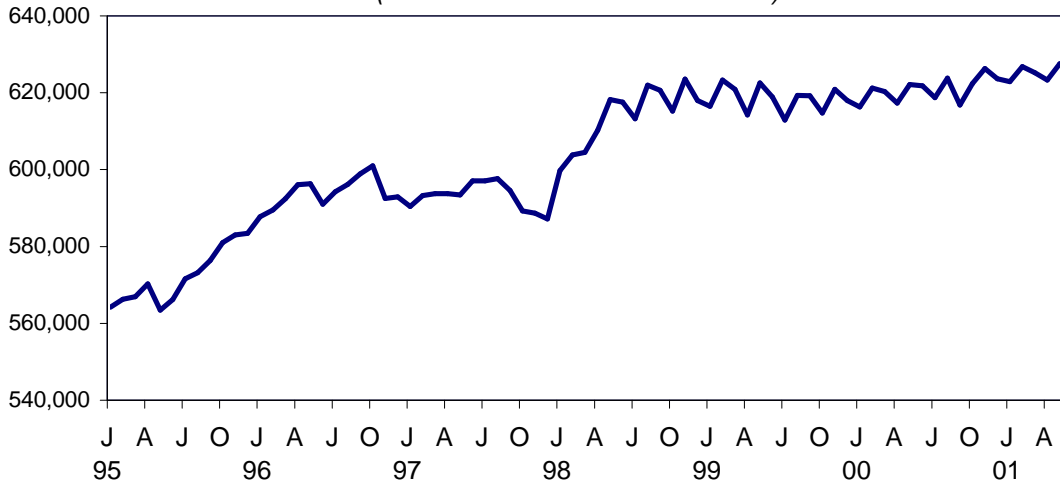


FOOD STAMPS PERSONS



SSI PERSONS

(INCLUDING MENTAL HYGIENE)



SELECTED SUMMARY PROGRAM DATA
BY REGION

Table 1
TEMPORARY AND DISABILITY ASSISTANCE CASES
June 2001

Region	Cases				
	Temporary Assistance by Program			Supplemental Security Income	Food Stamps
	Total	Family Assistance	Safety Net Assistance		
New York State	325,009	216,675	108,334	612,499	668,245
New York City	234,618	155,698	78,920	395,323	430,425
Rest of State	90,391	60,977	29,414	217,176	237,820

Table 2
TEMPORARY AND DISABILITY ASSISTANCE RECIPIENTS
June 2001

Region	Recipients				
	Temporary Assistance by Program			Supplemental Security Income	Food Stamps
	Total	Family Assistance	Safety Net Assistance		
New York State	692,489	576,222	116,267	612,499	1,324,954
New York City	496,545	412,953	83,592	395,323	836,157
Rest of State	195,944	163,269	32,675	217,176	488,797

Table 3
TEMPORARY AND DISABILITY ASSISTANCE EXPENDITURES
June 2001

Region	Expenditures				
	Temporary Assistance by Program			Supplemental Security Income	Food Stamps
	Total	Family Assistance	Safety Net Assistance		
New York State	\$148,382,245	\$111,540,534	\$36,841,711	\$277,784,164	\$116,372,049
New York City	101,285,000	78,062,000	23,223,000	184,893,580	79,258,430
Rest of State	47,097,245	33,478,534	13,618,711	92,890,584	37,113,619

Note: SSI data listed here do not include Mental Hygiene data. See Tables 17 - 19 for total SSI data.

Table 4
TEMPORARY ASSISTANCE
 Year to Year Monthly Comparison by Local District
 Cases, Recipients and Expenditures
 June 2001

Local District	June 2001			June 2000			June 1999		
	Cases	Recipients	Expenditures	Cases	Recipients	Expenditures	Cases	Recipients	Expenditures
New York State	325,009	692,489	\$148,382,245	367,559	795,474	\$ 163,550,002	425,524	945,165	\$ 183,695,090
New York City*	234,618	496,545	101,285,000	266,427	572,364	112,029,000	307,920	675,524	125,044,000
Rest of State	90,391	195,944	47,097,245	101,132	223,110	51,521,002	117,604	269,641	58,651,090
Albany	3,361	7,451	1,767,056	3,294	7,469	1,649,465	3,614	8,631	1,892,153
Allegany	481	1,087	178,135	565	1,304	201,467	726	1,751	286,491
Broome	1,904	4,086	903,342	2,228	5,064	1,025,323	2,681	6,339	1,191,450
Cattaraugus	632	1,340	261,256	697	1,480	275,199	795	1,831	288,522
Cayuga	414	920	180,653	436	982	189,831	488	1,083	200,517
Chautauqua	2,011	4,285	884,754	2,035	4,442	796,236	2,235	5,274	874,417
Chemung	846	1,875	356,178	898	2,038	345,874	1,014	2,394	378,154
Chenango	244	523	113,568	254	545	102,629	309	769	117,352
Clinton	586	1,142	258,820	571	1,135	227,208	616	1,276	234,403
Columbia	389	731	165,145	397	794	149,995	475	1,028	179,054
Cortland	369	813	171,663	421	977	192,801	497	1,229	219,447
Delaware	181	342	75,228	198	365	75,092	219	418	89,727
Dutchess	1,370	2,575	729,243	1,451	2,943	736,974	1,756	3,720	782,970
Erie	13,858	30,843	5,951,969	16,850	37,308	6,597,617	20,384	46,620	8,077,060
Essex	188	375	94,581	234	463	96,594	279	609	86,095
Franklin	271	520	102,215	321	642	109,411	418	858	135,852
Fulton	374	708	164,255	426	838	170,608	441	966	156,702
Genesee	266	540	108,838	291	637	129,895	310	752	130,762
Greene	397	774	163,442	386	750	152,399	439	928	178,175
Hamilton	14	21	5,235	11	17	3,350	20	37	5,393
Herkimer	295	591	118,049	350	749	146,359	409	925	166,549
Jefferson	1,017	2,107	450,284	1,192	2,492	503,617	1,405	3,074	564,821
Lewis	110	206	38,011	142	286	51,046	188	424	61,112
Livingston	535	1,017	270,234	490	1,002	223,611	553	1,152	214,002
Madison	150	263	66,690	182	320	73,707	190	380	76,849
Monroe	14,157	31,633	7,391,869	16,318	37,369	8,459,501	18,401	43,444	10,712,942
Montgomery	273	544	114,318	312	642	141,928	321	716	125,697
Nassau	4,345	8,704	2,428,914	4,890	9,959	2,648,017	5,892	12,291	2,966,757
Niagara	2,457	5,179	972,060	2,728	5,694	1,007,177	3,229	7,068	1,248,738
Oneida	2,281	5,605	963,220	2,559	6,423	1,085,511	3,041	7,817	1,197,006
Onondaga	5,766	12,772	2,558,041	5,989	13,646	2,559,852	6,715	16,062	3,039,327
Ontario	592	1,094	258,979	538	1,017	233,903	626	1,358	262,426
Orange	2,946	7,633	1,780,428	3,027	7,878	1,613,568	3,173	8,550	1,613,702
Orleans	454	1,021	205,073	473	1,076	204,940	445	1,026	186,745
Oswego	770	1,718	346,874	841	1,948	375,907	1,065	2,541	447,054
Otsego	113	181	63,883	119	192	57,843	125	234	47,477
Putnam	116	193	85,332	123	207	74,558	127	213	69,593
Rensselaer	1,138	2,554	527,056	1,204	2,675	553,395	1,309	3,080	563,782
Rockland	1,142	3,299	651,933	1,252	3,614	784,185	1,522	4,224	868,111
St.Lawrence	987	2,010	370,944	1,176	2,422	393,985	1,424	3,072	515,051
Saratoga	250	373	116,113	254	411	121,274	280	488	113,795
Schenectady	1,049	2,247	498,320	1,013	2,299	439,560	1,297	3,178	563,113
Schoharie	94	156	47,803	92	161	57,531	114	220	50,031
Schuyler	117	232	51,716	121	250	48,567	134	284	57,540
Seneca	179	343	68,487	189	385	72,786	181	410	76,612
Steuben	755	1,565	324,537	921	1,863	347,477	1,220	2,723	441,440
Suffolk	6,829	14,097	4,879,686	7,685	16,035	5,295,039	8,907	19,396	5,638,995
Sullivan	563	1,127	250,195	565	1,169	269,464	651	1,481	278,918
Tioga	265	540	102,860	316	696	121,138	384	887	146,883
Tompkins	655	1,247	307,732	683	1,365	327,192	739	1,523	328,109
Ulster	1,191	2,397	621,524	1,299	2,522	608,079	1,573	3,310	720,528
Warren	272	537	114,401	237	456	101,310	237	517	95,884
Washington	315	557	147,115	316	625	133,682	453	921	183,568
Wayne	470	833	219,972	541	1,131	239,976	672	1,492	281,364
Westchester	9,321	19,943	6,943,208	10,762	23,421	8,801,754	12,603	28,113	9,115,205
Wyoming	193	346	76,052	183	341	76,733	177	332	64,896
Yates	73	129	29,756	86	176	38,862	106	202	41,772

* Expenditures partially estimated.

Table 5
TEMPORARY ASSISTANCE
Cases, Recipients, Children, Adults and Expenditures by Local District
June 2001

Local District	Temporary Assistance				
	Cases	Recipients	Children	Adults	Expenditures
New York State	325,009	692,489	408,671	283,818	\$148,382,245
New York City*	234,618	496,545	287,674	208,871	101,285,000
Rest of State	90,391	195,944	120,997	74,947	47,097,245
Albany	3,361	7,451	4,527	2,924	1,767,056
Allegany	481	1,087	671	416	178,135
Broome	1,904	4,086	2,547	1,539	903,342
Cattaraugus	632	1,340	834	506	261,256
Cayuga	414	920	603	317	180,653
Chautauqua	2,011	4,285	2,598	1,687	884,754
Chemung	846	1,875	1,249	626	356,178
Chenango	244	523	351	172	113,568
Clinton	586	1,142	681	461	258,820
Columbia	389	731	436	295	165,145
Cortland	369	813	486	327	171,663
Delaware	181	342	218	124	75,228
Dutchess	1,370	2,575	1,624	951	729,243
Erie	13,858	30,843	18,846	11,997	5,951,969
Essex	188	375	220	155	94,581
Franklin	271	520	325	195	102,215
Fulton	374	708	403	305	164,255
Genesee	266	540	331	209	108,838
Greene	397	774	439	335	163,442
Hamilton	14	21	10	11	5,235
Herkimer	295	591	377	214	118,049
Jefferson	1,017	2,107	1,181	926	450,284
Lewis	110	206	123	83	38,011
Livingston	535	1,017	509	508	270,234
Madison	150	263	195	68	66,690
Monroe	14,157	31,633	19,557	12,076	7,391,869
Montgomery	273	544	334	210	114,318
Nassau	4,345	8,704	5,649	3,055	2,428,914
Niagara	2,457	5,179	3,151	2,028	972,060
Oneida	2,281	5,605	3,619	1,986	963,220
Onondaga	5,766	12,772	8,141	4,631	2,558,041
Ontario	592	1,094	603	491	258,979
Orange	2,946	7,633	5,043	2,590	1,780,428
Orleans	454	1,021	617	404	205,073
Oswego	770	1,718	1,128	590	346,874
Otsego	113	181	115	66	63,883
Putnam	116	193	112	81	85,332
Rensselaer	1,138	2,554	1,588	966	527,056
Rockland	1,142	3,299	2,192	1,107	651,933
St.Lawrence	987	2,010	1,139	871	370,944
Saratoga	250	373	278	95	116,113
Schenectady	1,049	2,247	1,536	711	498,320
Schoharie	94	156	99	57	47,803
Schuyler	117	232	140	92	51,716
Seneca	179	343	204	139	68,487
Steuben	755	1,565	922	643	324,537
Suffolk	6,829	14,097	8,718	5,379	4,879,686
Sullivan	563	1,127	731	396	250,195
Tioga	265	540	345	195	102,860
Tompkins	655	1,247	684	563	307,732
Ulster	1,191	2,397	1,562	835	621,524
Warren	272	537	306	231	114,401
Washington	315	557	327	230	147,115
Wayne	470	833	511	322	219,972
Westchester	9,321	19,943	11,608	8,335	6,943,208
Wyoming	193	346	181	165	76,052
Yates	73	129	73	56	29,756

* Expenditures partially estimated.

Table 6
FAMILY ASSISTANCE
Cases, Recipients, Children, Adults and Expenditures by Local District
June 2001

Local District	Family Assistance				
	Cases	Recipients	Children	Adults	Expenditures
New York State	216,675	576,222	403,322	172,900	\$111,540,534
New York City*	155,698	412,953	285,704	127,249	78,062,000
Rest of State	60,977	163,269	117,618	45,651	33,478,534
Albany	2,407	6,430	4,462	1,968	1,278,401
Allegany	375	975	666	309	147,011
Broome	1,328	3,431	2,466	965	590,359
Cattaraugus	455	1,143	822	321	181,092
Cayuga	319	814	590	224	139,393
Chautauqua	1,417	3,643	2,544	1,099	679,685
Chemung	657	1,661	1,215	446	273,597
Chenango	186	459	344	115	76,112
Clinton	385	916	657	259	163,422
Columbia	275	615	432	183	123,052
Cortland	262	692	470	222	124,921
Delaware	125	285	217	68	50,816
Dutchess	865	1,991	1,518	473	520,859
Erie	9,485	26,234	18,657	7,577	4,282,799
Essex	130	314	217	97	63,769
Franklin	201	450	323	127	72,260
Fulton	250	562	384	178	96,665
Genesee	174	444	322	122	71,103
Greene	275	650	433	217	113,895
Hamilton	8	15	10	5	2,526
Herkimer	215	509	370	139	89,260
Jefferson	668	1,738	1,169	569	308,679
Lewis	77	170	118	52	29,241
Livingston	319	765	484	281	163,137
Madison	109	221	188	33	49,095
Monroe	9,028	25,396	18,435	6,961	4,990,283
Montgomery	169	438	334	104	66,003
Nassau	2,977	7,192	5,494	1,698	1,717,317
Niagara	1,705	4,345	3,061	1,284	672,885
Oneida	1,641	4,870	3,533	1,337	703,633
Onondaga	4,033	10,892	7,947	2,945	1,929,310
Ontario	353	840	585	255	147,899
Orange	2,085	6,685	4,946	1,739	1,287,057
Orleans	342	898	608	290	154,837
Oswego	598	1,516	1,095	421	257,273
Otsego	68	131	110	21	26,819
Putnam	58	124	99	25	52,525
Rensselaer	884	2,287	1,579	708	386,761
Rockland	728	2,831	2,150	681	407,418
St.Lawrence	707	1,714	1,127	587	277,694
Saratoga	176	295	270	25	71,525
Schenectady	758	1,917	1,489	428	353,122
Schoharie	62	119	95	24	31,141
Schuyler	82	195	140	55	35,327
Seneca	119	274	192	82	43,946
Steuben	508	1,307	910	397	218,889
Suffolk	4,163	11,149	8,374	2,775	3,726,409
Sullivan	406	958	716	242	188,274
Tioga	209	482	342	140	84,452
Tompkins	416	992	663	329	200,874
Ulster	860	1,997	1,487	510	436,767
Warren	175	437	303	134	73,938
Washington	208	445	316	129	95,386
Wayne	281	632	492	140	138,200
Westchester	6,055	16,432	11,407	5,025	4,948,818
Wyoming	115	261	175	86	45,914
Yates	41	91	66	25	16,689

* Expenditures partially estimated.

Table 7
SAFETY NET ASSISTANCE
Cases, Recipients, Children, Adults and Expenditures by Local District
June 2001

Local District	Safety Net Assistance				
	Cases	Recipients	Children	Adults	Expenditures
New York State	108,334	116,267	5,349	110,918	\$36,841,711
New York City*	78,920	83,592	1,970	81,622	23,223,000
Rest of State	29,414	32,675	3,379	29,296	13,618,711
Albany	954	1,021	65	956	488,655
Allegany	106	112	5	107	31,124
Broome	576	655	81	574	312,983
Cattaraugus	177	197	12	185	80,164
Cayuga	95	106	13	93	41,260
Chautauqua	594	642	54	588	205,069
Chemung	189	214	34	180	82,581
Chenango	58	64	7	57	37,456
Clinton	201	226	24	202	95,398
Columbia	114	116	4	112	42,093
Cortland	107	121	16	105	46,742
Delaware	56	57	1	56	24,412
Dutchess	505	584	106	478	208,384
Erie	4,373	4,609	189	4,420	1,669,170
Essex	58	61	3	58	30,812
Franklin	70	70	2	68	29,955
Fulton	124	146	19	127	67,590
Genesee	92	96	9	87	37,735
Greene	122	124	6	118	49,547
Hamilton	6	6	0	6	2,709
Herkimer	80	82	7	75	28,789
Jefferson	349	369	12	357	141,605
Lewis	33	36	5	31	8,770
Livingston	216	252	25	227	107,097
Madison	41	42	7	35	17,595
Monroe	5,129	6,237	1,122	5,115	2,401,586
Montgomery	104	106	0	106	48,315
Nassau	1,368	1,512	155	1,357	711,597
Niagara	752	834	90	744	299,175
Oneida	640	735	86	649	259,587
Onondaga	1,733	1,880	194	1,686	628,731
Ontario	239	254	18	236	111,080
Orange	861	948	97	851	493,371
Orleans	112	123	9	114	50,236
Oswego	172	202	33	169	89,601
Otsego	45	50	5	45	37,064
Putnam	58	69	13	56	32,807
Rensselaer	254	267	9	258	140,295
Rockland	414	468	42	426	244,515
St. Lawrence	280	296	12	284	93,250
Saratoga	74	78	8	70	44,588
Schenectady	291	330	47	283	145,198
Schoharie	32	37	4	33	16,662
Schuyler	35	37	0	37	16,389
Seneca	60	69	12	57	24,541
Steuben	247	258	12	246	105,648
Suffolk	2,666	2,948	344	2,604	1,153,277
Sullivan	157	169	15	154	61,921
Tioga	56	58	3	55	18,408
Tompkins	239	255	21	234	106,858
Ulster	331	400	75	325	184,757
Warren	97	100	3	97	40,463
Washington	107	112	11	101	51,729
Wayne	189	201	19	182	81,772
Westchester	3,266	3,511	201	3,310	1,994,390
Wyoming	78	85	6	79	30,138
Yates	32	38	7	31	13,067

* Expenditures partially estimated.

Table 8
 TEMPORARY ASSISTANCE BY FUNDING SOURCE
 Cases, Recipients and Expenditures by Local District
 June 2001

Local District	Total			Federally Participating - TANF Family Assistance and Safety Net - FP			Federally Non-Participating Safety Net Assistance - FNP		
	Cases	Recipients	Expenditures	Cases	Recipients	Expenditures	Cases	Recipients	Expenditures
New York State	325,009	692,489	\$148,382,245	218,105	580,006	\$112,397,377	106,904	112,483	\$35,984,868
New York City*	234,618	496,545	101,285,000	155,901	413,436	78,115,000	78,717	83,109	23,170,000
Rest of State	90,391	195,944	47,097,245	62,204	166,570	34,282,377	28,187	29,374	12,814,868
Albany	3,361	7,451	1,767,056	2,433	6,499	1,290,121	928	952	476,935
Allegany	481	1,087	178,135	375	975	147,011	106	112	31,124
Broome	1,904	4,086	903,342	1,367	3,521	615,640	537	565	287,702
Cattaraugus	632	1,340	261,256	458	1,150	181,917	174	190	79,339
Cayuga	414	920	180,653	322	825	140,907	92	95	39,746
Chautauqua	2,011	4,285	884,754	1,442	3,692	689,755	569	593	194,999
Chemung	846	1,875	356,178	665	1,681	277,740	181	194	78,438
Chenango	244	523	113,568	188	466	77,187	56	57	36,381
Clinton	586	1,142	258,820	393	941	176,685	193	201	82,135
Columbia	389	731	165,145	275	615	123,052	114	116	42,093
Cortland	369	813	171,663	267	708	126,723	102	105	44,940
Delaware	181	342	75,228	127	287	51,618	54	55	23,610
Dutchess	1,370	2,575	729,243	888	2,054	534,906	482	521	194,337
Erie	13,858	30,843	5,951,969	9,509	26,300	4,294,320	4,349	4,543	1,657,649
Essex	188	375	94,581	131	315	63,791	57	60	30,790
Franklin	271	520	102,215	201	450	72,260	70	70	29,955
Fulton	374	708	164,255	259	587	102,471	115	121	61,784
Genesee	266	540	108,838	175	445	71,308	91	95	37,530
Greene	397	774	163,442	277	652	115,611	120	122	47,831
Hamilton	14	21	5,235	8	15	2,526	6	6	2,709
Herkimer	295	591	118,049	217	513	90,043	78	78	28,006
Jefferson	1,017	2,107	450,284	683	1,763	315,553	334	344	134,731
Lewis	110	206	38,011	77	170	29,241	33	36	8,770
Livingston	535	1,017	270,234	337	805	174,308	198	212	95,926
Madison	150	263	66,690	109	221	49,095	41	42	17,595
Monroe	14,157	31,633	7,391,869	9,561	26,881	5,335,351	4,596	4,752	2,056,518
Montgomery	273	544	114,318	169	438	66,003	104	106	48,315
Nassau	4,345	8,704	2,428,914	3,037	7,343	1,756,482	1,308	1,361	672,432
Niagara	2,457	5,179	972,060	1,751	4,463	690,704	706	716	281,356
Oneida	2,281	5,605	963,220	1,669	4,941	718,092	612	664	245,128
Onondaga	5,766	12,772	2,558,041	4,063	10,974	1,944,262	1,703	1,798	613,779
Ontario	592	1,094	258,979	358	856	149,673	234	238	109,306
Orange	2,946	7,633	1,780,428	2,114	6,767	1,315,248	832	866	465,180
Orleans	454	1,021	205,073	343	902	155,390	111	119	49,683
Oswego	770	1,718	346,874	607	1,552	260,679	163	166	86,195
Otsego	113	181	63,883	69	134	27,248	44	47	36,635
Putnam	116	193	85,332	63	136	56,613	53	57	28,719
Rensselaer	1,138	2,554	527,056	889	2,299	388,419	249	255	138,637
Rockland	1,142	3,299	651,933	747	2,880	420,646	395	419	231,287
St. Lawrence	987	2,010	370,944	712	1,729	280,680	275	281	90,264
Saratoga	250	373	116,113	177	298	71,852	73	75	44,261
Schenectady	1,049	2,247	498,320	778	1,963	359,624	271	284	138,696
Schoharie	94	156	47,803	62	119	31,141	32	37	16,662
Schuyler	117	232	51,716	82	195	35,327	35	37	16,389
Seneca	179	343	68,487	126	289	48,605	53	54	19,882
Steuben	755	1,565	324,537	512	1,315	220,646	243	250	103,891
Suffolk	6,829	14,097	4,879,686	4,243	11,395	3,806,678	2,586	2,702	1,073,008
Sullivan	563	1,127	250,195	407	962	189,056	156	165	61,139
Tioga	265	540	102,860	210	483	84,752	55	57	18,108
Tompkins	655	1,247	307,732	427	1,009	205,974	228	238	101,758
Ulster	1,191	2,397	621,524	898	2,098	462,763	293	299	158,761
Warren	272	537	114,401	175	437	73,938	97	100	40,463
Washington	315	557	147,115	210	448	95,875	105	109	51,240
Wayne	470	833	219,972	285	639	140,812	185	194	79,160
Westchester	9,321	19,943	6,943,208	6,119	16,618	5,012,503	3,202	3,325	1,930,705
Wyoming	193	346	76,052	117	266	46,863	76	80	29,189
Yates	73	129	29,756	41	91	16,689	32	38	13,067

* Expenditures partially estimated.

Table 9
 TEMPORARY ASSISTANCE TO NEEDY FAMILIES (TANF) - FP BY PROGRAM
 Cases, Recipients, Children, Adults and Expenditures by Local District
 June 2001

Local District	Family Assistance					Safety Net Assistance - FP				
	Cases	Recipients	Children	Adults	Expenditures	Cases	Recipients	Children	Adults	Expenditures
New York State	216,675	576,222	403,322	172,900	\$111,540,534	1,430	3,784	2,291	1,493	\$856,843
New York City*	155,698	412,953	285,704	127,249	78,062,000	203	483	266	217	53,000
Rest of State	60,977	163,269	117,618	45,651	33,478,534	1,227	3,301	2,025	1,276	803,843
Albany	2,407	6,430	4,462	1,968	1,278,401	26	69	41	28	11,720
Allegany	375	975	666	309	147,011	0	0	0	0	0
Broome	1,328	3,431	2,466	965	590,359	39	90	47	43	25,281
Cattaraugus	455	1,143	822	321	181,092	3	7	5	2	825
Cayuga	319	814	590	224	139,393	3	11	7	4	1,514
Chautauqua	1,417	3,643	2,544	1,099	679,685	25	49	33	16	10,070
Chemung	657	1,661	1,215	446	273,597	8	20	12	8	4,143
Chenango	186	459	344	115	76,112	2	7	5	2	1,075
Clinton	385	916	657	259	163,422	8	25	16	9	13,263
Columbia	275	615	432	183	123,052	0	0	0	0	0
Cortland	262	692	470	222	124,921	5	16	10	6	1,802
Delaware	125	285	217	68	50,816	2	2	0	2	802
Dutchess	865	1,991	1,518	473	520,859	23	63	38	25	14,047
Erie	9,485	26,234	18,657	7,577	4,282,799	24	66	38	28	11,521
Essex	130	314	217	97	63,769	1	1	0	1	22
Franklin	201	450	323	127	72,260	0	0	0	0	0
Fulton	250	562	384	178	96,665	9	25	15	10	5,806
Genesee	174	444	322	122	71,103	1	1	0	1	205
Greene	275	650	433	217	113,895	2	2	0	2	1,716
Hamilton	8	15	10	5	2,526	0	0	0	0	0
Herkimer	215	509	370	139	89,260	2	4	3	1	783
Jefferson	668	1,738	1,169	569	308,679	15	25	9	16	6,874
Lewis	77	170	118	52	29,241	0	0	0	0	0
Livingston	319	765	484	281	163,137	18	40	19	21	11,171
Madison	109	221	188	33	49,095	0	0	0	0	0
Monroe	9,028	25,396	18,435	6,961	4,990,283	533	1,485	957	528	345,068
Montgomery	169	438	334	104	66,003	0	0	0	0	0
Nassau	2,977	7,192	5,494	1,698	1,717,317	60	151	89	62	39,165
Niagara	1,705	4,345	3,061	1,284	672,885	46	118	69	49	17,819
Oneida	1,641	4,870	3,533	1,337	703,633	28	71	42	29	14,459
Onondaga	4,033	10,892	7,947	2,945	1,929,310	30	82	49	33	14,952
Ontario	353	840	585	255	147,899	5	16	10	6	1,774
Orange	2,085	6,685	4,946	1,739	1,287,057	29	82	48	34	28,191
Orleans	342	898	608	290	154,837	1	4	2	2	553
Oswego	598	1,516	1,095	421	257,273	9	36	25	11	3,406
Otsego	68	131	110	21	26,819	1	3	2	1	429
Putnam	58	124	99	25	52,525	5	12	6	6	4,088
Rensselaer	884	2,287	1,579	708	386,761	5	12	7	5	1,658
Rockland	728	2,831	2,150	681	407,418	19	49	30	19	13,228
St.Lawrence	707	1,714	1,127	587	277,694	5	15	6	9	2,986
Saratoga	176	295	270	25	71,525	1	3	2	1	327
Schenectady	758	1,917	1,489	428	353,122	20	46	24	22	6,502
Schoharie	62	119	95	24	31,141	0	0	0	0	0
Schuyler	82	195	140	55	35,327	0	0	0	0	0
Seneca	119	274	192	82	43,946	7	15	8	7	4,659
Steuben	508	1,307	910	397	218,889	4	8	4	4	1,757
Suffolk	4,163	11,149	8,374	2,775	3,726,409	80	246	160	86	80,269
Sullivan	406	958	716	242	188,274	1	4	2	2	782
Tioga	209	482	342	140	84,452	1	1	0	1	300
Tompkins	416	992	663	329	200,874	11	17	7	10	5,100
Ulster	860	1,997	1,487	510	436,767	38	101	57	44	25,996
Warren	175	437	303	134	73,938	0	0	0	0	0
Washington	208	445	316	129	95,386	2	3	1	2	489
Wayne	281	632	492	140	138,200	4	7	4	3	2,612
Westchester	6,055	16,432	11,407	5,025	4,948,818	64	186	113	73	63,685
Wyoming	115	261	175	86	45,914	2	5	3	2	949
Yates	41	91	66	25	16,689	0	0	0	0	0

* Expenditures partially estimated.

Table 10
SAFETY NET ASSISTANCE - FNP
Cases, Recipients, Children, Adults and Expenditures by Local District
June 2001

Local District	Safety Net Assistance - FNP				
	Cases	Recipients	Children	Adults	Expenditures
New York State	106,904	112,483	3,058	109,425	\$35,984,868
New York City*	78,717	83,109	1,704	81,405	23,170,000
Rest of State	28,187	29,374	1,354	28,020	12,814,868
Albany	928	952	24	928	476,935
Allegany	106	112	5	107	31,124
Broome	537	565	34	531	287,702
Cattaraugus	174	190	7	183	79,339
Cayuga	92	95	6	89	39,746
Chautauqua	569	593	21	572	194,999
Chemung	181	194	22	172	78,438
Chenango	56	57	2	55	36,381
Clinton	193	201	8	193	82,135
Columbia	114	116	4	112	42,093
Cortland	102	105	6	99	44,940
Delaware	54	55	1	54	23,610
Dutchess	482	521	68	453	194,337
Erie	4,349	4,543	151	4,392	1,657,649
Essex	57	60	3	57	30,790
Franklin	70	70	2	68	29,955
Fulton	115	121	4	117	61,784
Genesee	91	95	9	86	37,530
Greene	120	122	6	116	47,831
Hamilton	6	6	0	6	2,709
Herkimer	78	78	4	74	28,006
Jefferson	334	344	3	341	134,731
Lewis	33	36	5	31	8,770
Livingston	198	212	6	206	95,926
Madison	41	42	7	35	17,595
Monroe	4,596	4,752	165	4,587	2,056,518
Montgomery	104	106	0	106	48,315
Nassau	1,308	1,361	66	1,295	672,432
Niagara	706	716	21	695	281,356
Oneida	612	664	44	620	245,128
Onondaga	1,703	1,798	145	1,653	613,779
Ontario	234	238	8	230	109,306
Orange	832	866	49	817	465,180
Orleans	111	119	7	112	49,683
Oswego	163	166	8	158	86,195
Otsego	44	47	3	44	36,635
Putnam	53	57	7	50	28,719
Rensselaer	249	255	2	253	138,637
Rockland	395	419	12	407	231,287
St.Lawrence	275	281	6	275	90,264
Saratoga	73	75	6	69	44,261
Schenectady	271	284	23	261	138,696
Schoharie	32	37	4	33	16,662
Schuyler	35	37	0	37	16,389
Seneca	53	54	4	50	19,882
Steuben	243	250	8	242	103,891
Suffolk	2,586	2,702	184	2,518	1,073,008
Sullivan	156	165	13	152	61,139
Tioga	55	57	3	54	18,108
Tompkins	228	238	14	224	101,758
Ulster	293	299	18	281	158,761
Warren	97	100	3	97	40,463
Washington	105	109	10	99	51,240
Wayne	185	194	15	179	79,160
Westchester	3,202	3,325	88	3,237	1,930,705
Wyoming	76	80	3	77	29,189
Yates	32	38	7	31	13,067

* Expenditures partially estimated.

Table 11
SAFETY NET ASSISTANCE - FNP BY CASE SIZE CATEGORY
Cases, Recipients, Children, Adults and Expenditures by Local District
June 2001

Local District	One Person					Multi-Person				
	Cases	Recipients	Children	Adults	Expenditures	Cases	Recipients	Children	Adults	Expenditures
New York State	See Note	See Note	See Note	See Note	See Note	See Note	See Note	See Note	See Note	See Note
New York City	See Note	See Note	See Note	See Note	See Note	See Note	See Note	See Note	See Note	See Note
Rest of State	27,274	27,274	635	26,639	\$12,294,315	913	2,100	719	1,381	\$520,553
Albany	909	909	7	902	463,565	19	43	17	26	13,370
Allegany	101	101	2	99	28,882	5	11	3	8	2,242
Broome	513	513	17	496	275,109	24	52	17	35	12,593
Cattaraugus	161	161	1	160	73,372	13	29	6	23	5,967
Cayuga	89	89	3	86	38,718	3	6	3	3	1,028
Chautauqua	547	547	7	540	185,554	22	46	14	32	9,445
Chemung	173	173	7	166	75,057	8	21	15	6	3,381
Chenango	55	55	0	55	36,126	1	2	2	0	255
Clinton	185	185	6	179	77,043	8	16	2	14	5,092
Columbia	112	112	2	110	41,632	2	4	2	2	461
Cortland	99	99	5	94	43,735	3	6	1	5	1,205
Delaware	53	53	1	52	23,392	1	2	0	2	218
Dutchess	461	461	35	426	176,815	21	60	33	27	17,522
Erie	4,219	4,219	45	4,174	1,581,609	130	324	106	218	76,040
Essex	55	55	3	52	29,473	2	5	0	5	1,317
Franklin	70	70	2	68	29,955	0	0	0	0	0
Fulton	110	110	0	110	59,352	5	11	4	7	2,432
Genesee	88	88	4	84	36,636	3	7	5	2	894
Greene	118	118	4	114	46,996	2	4	2	2	835
Hamilton	6	6	0	6	2,709	0	0	0	0	0
Herkimer	78	78	4	74	28,006	0	0	0	0	0
Jefferson	325	325	3	322	131,390	9	19	0	19	3,341
Lewis	31	31	0	31	7,656	2	5	5	0	1,114
Livingston	185	185	2	183	90,273	13	27	4	23	5,653
Madison	40	40	5	35	17,056	1	2	2	0	539
Monroe	4,472	4,472	68	4,404	1,985,564	124	280	97	183	70,954
Montgomery	102	102	0	102	47,476	2	4	0	4	839
Nassau	1,264	1,264	34	1,230	647,623	44	97	32	65	24,809
Niagara	698	698	14	684	277,554	8	18	7	11	3,802
Oneida	570	570	19	551	227,936	42	94	25	69	17,192
Onondaga	1,634	1,634	69	1,565	579,916	69	164	76	88	33,863
Ontario	231	231	5	226	107,608	3	7	3	4	1,698
Orange	804	804	27	777	449,298	28	62	22	40	15,882
Orleans	104	104	1	103	46,961	7	15	6	9	2,722
Oswego	161	161	4	157	85,365	2	5	4	1	830
Otsego	42	42	1	41	36,339	2	5	2	3	296
Putnam	49	49	6	43	27,166	4	8	1	7	1,553
Rensselaer	243	243	0	243	136,548	6	12	2	10	2,089
Rockland	374	374	5	369	214,191	21	45	7	38	17,096
St. Lawrence	269	269	6	263	87,887	6	12	0	12	2,377
Saratoga	71	71	6	65	42,618	2	4	0	4	1,643
Schenectady	264	264	9	255	136,086	7	20	14	6	2,610
Schoharie	30	30	0	30	15,799	2	7	4	3	863
Schuyler	33	33	0	33	15,684	2	4	0	4	705
Seneca	52	52	3	49	19,674	1	2	1	1	208
Steuben	237	237	3	234	101,443	6	13	5	8	2,448
Suffolk	2,507	2,507	96	2,411	1,011,545	79	195	88	107	61,463
Sullivan	152	152	6	146	59,661	4	13	7	6	1,478
Tioga	53	53	3	50	17,891	2	4	0	4	217
Tompkins	220	220	7	213	98,103	8	18	7	11	3,655
Ulster	288	288	8	280	153,996	5	11	10	1	4,765
Warren	94	94	3	91	39,236	3	6	0	6	1,227
Washington	102	102	5	97	49,543	3	7	5	2	1,697
Wayne	178	178	8	170	76,345	7	16	7	9	2,815
Westchester	3,090	3,090	49	3,041	1,860,682	112	235	39	196	70,023
Wyoming	72	72	3	69	27,109	4	8	0	8	2,080
Yates	31	31	2	29	11,357	1	7	5	2	1,710

Note: A breakout of One-Person and Multi-Person cases is not available for New York City.

Table 12
SAFETY NET ASSISTANCE - FNP - CASH TOTAL
Cases, Recipients, Children, Adults and Expenditures by Local District
June 2001

Local District	Safety Net Assistance - FNP - Cash Total				
	Cases	Recipients	Children	Adults	Expenditures
New York State	84,474	89,554	2,430	87,124	See Note
New York City	63,962	68,011	1,320	66,691	See Note
Rest of State	20,512	21,543	1,110	20,433	\$9,093,887
Albany	926	950	24	926	476,314
Allegany	91	97	5	92	26,739
Broome	369	394	33	361	183,791
Cattaraugus	156	172	6	166	74,621
Cayuga	68	70	2	68	26,661
Chautauqua	480	501	18	483	161,780
Chemung	159	172	22	150	64,864
Chenango	47	47	0	47	32,544
Clinton	156	163	6	157	62,628
Columbia	101	102	2	100	33,613
Cortland	87	90	5	85	37,793
Delaware	48	49	1	48	19,098
Dutchess	268	302	46	256	99,604
Erie	3,112	3,285	146	3,139	1,206,589
Essex	43	46	1	45	20,690
Franklin	52	52	1	51	22,526
Fulton	78	83	3	80	39,935
Genesee	73	75	5	70	30,101
Greene	100	101	2	99	34,066
Hamilton	6	6	0	6	2,709
Herkimer	65	65	4	61	20,219
Jefferson	240	249	1	248	90,216
Lewis	24	27	5	22	6,218
Livingston	162	175	5	170	79,191
Madison	34	35	7	28	11,883
Monroe	2,465	2,584	139	2,445	1,047,639
Montgomery	93	95	0	95	45,450
Nassau	958	993	27	966	463,730
Niagara	412	419	18	401	155,885
Oneida	462	509	39	470	163,050
Onondaga	1,442	1,529	119	1,410	496,942
Ontario	158	162	8	154	72,029
Orange	529	550	11	539	259,455
Orleans	105	113	6	107	48,110
Oswego	128	131	8	123	62,130
Otsego	33	36	3	33	28,748
Putnam	33	36	2	34	17,299
Rensselaer	181	186	1	185	89,575
Rockland	185	203	10	193	112,015
St.Lawrence	243	249	6	243	71,641
Saratoga	62	64	5	59	34,929
Schenectady	190	201	21	180	85,669
Schoharie	27	32	4	28	11,876
Schuyler	27	29	0	29	11,885
Seneca	37	38	4	34	11,660
Steuben	190	197	8	189	75,130
Suffolk	2,104	2,216	157	2,059	879,104
Sullivan	100	103	8	95	32,273
Tioga	50	52	2	50	14,945
Tompkins	140	148	13	135	59,332
Ulster	200	206	17	189	95,551
Warren	88	91	3	88	33,543
Washington	86	90	8	82	40,319
Wayne	143	152	15	137	51,147
Westchester	2,597	2,712	88	2,624	1,618,954
Wyoming	68	72	3	69	26,698
Yates	31	37	7	30	12,781

Note: A breakout of Safety Net Assistance - FNP - Cash and Safety Net Assistance - FNP - Non-Cash expenditures is not available for New York City.

Table 13
SAFETY NET ASSISTANCE - FNP - CASH BY CASE SIZE CATEGORY
Cases, Recipients, Children, Adults and Expenditures by Local District
June 2001

Local District	One Person					Multi-Person				
	Cases	Recipients	Children	Adults	Expenditures	Cases	Recipients	Children	Adults	Expenditures
New York State	See Note	See Note	See Note	See Note	See Note	See Note	See Note	See Note	See Note	See Note
New York City	See Note	See Note	See Note	See Note	See Note	See Note	See Note	See Note	See Note	See Note
Rest of State	19,720	19,720	511	19,209	\$8,630,928	792	1,823	599	1,224	\$462,959
Albany	907	907	7	900	462,944	19	43	17	26	13,370
Allegany	86	86	2	84	24,497	5	11	3	8	2,242
Broome	347	347	16	331	172,067	22	47	17	30	11,724
Cattaraugus	143	143	0	143	68,654	13	29	6	23	5,967
Cayuga	66	66	1	65	26,136	2	4	1	3	525
Chautauqua	460	460	7	453	153,200	20	41	11	30	8,580
Chemung	151	151	7	144	61,483	8	21	15	6	3,381
Chenango	47	47	0	47	32,544	0	0	0	0	0
Clinton	149	149	5	144	57,766	7	14	1	13	4,862
Columbia	100	100	2	98	33,554	1	2	0	2	59
Cortland	84	84	4	80	36,588	3	6	1	5	1,205
Delaware	47	47	1	46	18,880	1	2	0	2	218
Dutchess	252	252	20	232	84,185	16	50	26	24	15,419
Erie	3,001	3,001	45	2,956	1,136,663	111	284	101	183	69,926
Essex	41	41	1	40	19,373	2	5	0	5	1,317
Franklin	52	52	1	51	22,526	0	0	0	0	0
Fulton	74	74	0	74	37,853	4	9	3	6	2,082
Genesee	71	71	3	68	29,629	2	4	2	2	472
Greene	99	99	2	97	33,768	1	2	0	2	298
Hamilton	6	6	0	6	2,709	0	0	0	0	0
Herkimer	65	65	4	61	20,219	0	0	0	0	0
Jefferson	232	232	1	231	87,292	8	17	0	17	2,924
Lewis	22	22	0	22	5,104	2	5	5	0	1,114
Livingston	150	150	2	148	74,473	12	25	3	22	4,718
Madison	33	33	5	28	11,344	1	2	2	0	539
Monroe	2,370	2,370	67	2,303	993,212	95	214	72	142	54,427
Montgomery	91	91	0	91	44,611	2	4	0	4	839
Nassau	924	924	16	908	444,180	34	69	11	58	19,550
Niagara	406	406	13	393	153,248	6	13	5	8	2,637
Oneida	424	424	18	406	147,161	38	85	21	64	15,889
Onondaga	1,380	1,380	50	1,330	465,253	62	149	69	80	31,689
Ontario	155	155	5	150	70,331	3	7	3	4	1,698
Orange	510	510	3	507	248,725	19	40	8	32	10,730
Orleans	98	98	0	98	45,388	7	15	6	9	2,722
Oswego	126	126	4	122	61,300	2	5	4	1	830
Otsego	31	31	1	30	28,452	2	5	2	3	296
Putnam	30	30	2	28	16,038	3	6	0	6	1,261
Rensselaer	176	176	0	176	87,760	5	10	1	9	1,815
Rockland	169	169	5	164	98,097	16	34	5	29	13,918
St.Lawrence	237	237	6	231	69,264	6	12	0	12	2,377
Saratoga	60	60	5	55	33,286	2	4	0	4	1,643
Schenectady	184	184	9	175	83,068	6	17	12	5	2,601
Schoharie	25	25	0	25	11,013	2	7	4	3	863
Schuyler	25	25	0	25	11,180	2	4	0	4	705
Seneca	36	36	3	33	11,452	1	2	1	1	208
Steuben	184	184	3	181	72,682	6	13	5	8	2,448
Suffolk	2,029	2,029	76	1,953	820,168	75	187	81	106	58,936
Sullivan	97	97	6	91	31,264	3	6	2	4	1,009
Tioga	48	48	2	46	14,728	2	4	0	4	217
Tompkins	134	134	6	128	56,657	6	14	7	7	2,675
Ulster	195	195	7	188	90,786	5	11	10	1	4,765
Warren	85	85	3	82	32,316	3	6	0	6	1,227
Washington	83	83	3	80	38,622	3	7	5	2	1,697
Wayne	136	136	8	128	48,332	7	16	7	9	2,815
Westchester	2,493	2,493	49	2,444	1,553,214	104	219	39	180	65,740
Wyoming	64	64	3	61	24,618	4	8	0	8	2,080
Yates	30	30	2	28	11,071	1	7	5	2	1,710

Note: A breakout of One-Person and Multi-Person cases is not available for New York City.

Table 14
SAFETY NET ASSISTANCE - FNP - NON-CASH TOTAL
Cases, Recipients, Children, Adults and Expenditures by Local District
June 2001

Local District	Safety Net Assistance - FNP - Non-Cash Total				
	Cases	Recipients	Children	Adults	Expenditures
New York State	22,430	22,929	628	22,301	See Note
New York City	14,755	15,098	384	14,714	See Note
Rest of State	7,675	7,831	244	7,587	\$3,720,981
Albany	2	2	0	2	621
Allegany	15	15	0	15	4,385
Broome	168	171	1	170	103,911
Cattaraugus	18	18	1	17	4,718
Cayuga	24	25	4	21	13,085
Chautauqua	89	92	3	89	33,219
Chemung	22	22	0	22	13,574
Chenango	9	10	2	8	3,837
Clinton	37	38	2	36	19,507
Columbia	13	14	2	12	8,480
Cortland	15	15	1	14	7,147
Delaware	6	6	0	6	4,512
Dutchess	214	219	22	197	94,733
Erie	1,237	1,258	5	1,253	451,060
Essex	14	14	2	12	10,100
Franklin	18	18	1	17	7,429
Fulton	37	38	1	37	21,849
Genesee	18	20	4	16	7,429
Greene	20	21	4	17	13,765
Hamilton	0	0	0	0	0
Herkimer	13	13	0	13	7,787
Jefferson	94	95	2	93	44,515
Lewis	9	9	0	9	2,552
Livingston	36	37	1	36	16,735
Madison	7	7	0	7	5,712
Monroe	2,131	2,168	26	2,142	1,008,879
Montgomery	11	11	0	11	2,865
Nassau	350	368	39	329	208,702
Niagara	294	297	3	294	125,471
Oneida	150	155	5	150	82,078
Onondaga	261	269	26	243	116,837
Ontario	76	76	0	76	37,277
Orange	303	316	38	278	205,725
Orleans	6	6	1	5	1,573
Oswego	35	35	0	35	24,065
Otsego	11	11	0	11	7,887
Putnam	20	21	5	16	11,420
Rensselaer	68	69	1	68	49,062
Rockland	210	216	2	214	119,272
St. Lawrence	32	32	0	32	18,623
Saratoga	11	11	1	10	9,332
Schenectady	81	83	2	81	53,027
Schoharie	5	5	0	5	4,786
Schuyler	8	8	0	8	4,504
Seneca	16	16	0	16	8,222
Steuben	53	53	0	53	28,761
Suffolk	482	486	27	459	193,904
Sullivan	56	62	5	57	28,866
Tioga	5	5	1	4	3,163
Tompkins	88	90	1	89	42,426
Ulster	93	93	1	92	63,210
Warren	9	9	0	9	6,920
Washington	19	19	2	17	10,921
Wayne	42	42	0	42	28,013
Westchester	605	613	0	613	311,751
Wyoming	8	8	0	8	2,491
Yates	1	1	0	1	286

Note: A breakout of Safety Net Assistance - FNP - Cash and Safety Net Assistance - FNP - Non-Cash expenditures is not available for New York City.

Table 15
SAFETY NET ASSISTANCE - FNP - NON-CASH BY CASE SIZE CATEGORY
Cases, Recipients, Children, Adults and Expenditures by Local District
June 2001

Local District	One Person					Multi-Person				
	Cases	Recipients	Children	Adults	Expenditures	Cases	Recipients	Children	Adults	Expenditures
New York State	See Note	See Note	See Note	See Note	See Note	See Note	See Note	See Note	See Note	See Note
New York City	See Note	See Note	See Note	See Note	See Note	See Note	See Note	See Note	See Note	See Note
Rest of State	7,554	7,554	124	7,430	\$3,663,387	121	277	120	157	\$57,594
Albany	2	2	0	2	621	0	0	0	0	0
Allegany	15	15	0	15	4,385	0	0	0	0	0
Broome	166	166	1	165	103,042	2	5	0	5	869
Cattaraugus	18	18	1	17	4,718	0	0	0	0	0
Cayuga	23	23	2	21	12,582	1	2	2	0	503
Chautauqua	87	87	0	87	32,354	2	5	3	2	865
Chemung	22	22	0	22	13,574	0	0	0	0	0
Chenango	8	8	0	8	3,582	1	2	2	0	255
Clinton	36	36	1	35	19,277	1	2	1	1	230
Columbia	12	12	0	12	8,078	1	2	2	0	402
Cortland	15	15	1	14	7,147	0	0	0	0	0
Delaware	6	6	0	6	4,512	0	0	0	0	0
Dutchess	209	209	15	194	92,630	5	10	7	3	2,103
Erie	1,218	1,218	0	1,218	444,946	19	40	5	35	6,114
Essex	14	14	2	12	10,100	0	0	0	0	0
Franklin	18	18	1	17	7,429	0	0	0	0	0
Fulton	36	36	0	36	21,499	1	2	1	1	350
Genesee	17	17	1	16	7,007	1	3	3	0	422
Greene	19	19	2	17	13,228	1	2	2	0	537
Hamilton	0	0	0	0	0	0	0	0	0	0
Herkimer	13	13	0	13	7,787	0	0	0	0	0
Jefferson	93	93	2	91	44,098	1	2	0	2	417
Lewis	9	9	0	9	2,552	0	0	0	0	0
Livingston	35	35	0	35	15,800	1	2	1	1	935
Madison	7	7	0	7	5,712	0	0	0	0	0
Monroe	2,102	2,102	1	2,101	992,352	29	66	25	41	16,527
Montgomery	11	11	0	11	2,865	0	0	0	0	0
Nassau	340	340	18	322	203,443	10	28	21	7	5,259
Niagara	292	292	1	291	124,306	2	5	2	3	1,165
Oneida	146	146	1	145	80,775	4	9	4	5	1,303
Onondaga	254	254	19	235	114,663	7	15	7	8	2,174
Ontario	76	76	0	76	37,277	0	0	0	0	0
Orange	294	294	24	270	200,573	9	22	14	8	5,152
Orleans	6	6	1	5	1,573	0	0	0	0	0
Oswego	35	35	0	35	24,065	0	0	0	0	0
Otsego	11	11	0	11	7,887	0	0	0	0	0
Putnam	19	19	4	15	11,128	1	2	1	1	292
Rensselaer	67	67	0	67	48,788	1	2	1	1	274
Rockland	205	205	0	205	116,094	5	11	2	9	3,178
St.Lawrence	32	32	0	32	18,623	0	0	0	0	0
Saratoga	11	11	1	10	9,332	0	0	0	0	0
Schenectady	80	80	0	80	53,018	1	3	2	1	9
Schoharie	5	5	0	5	4,786	0	0	0	0	0
Schuyler	8	8	0	8	4,504	0	0	0	0	0
Seneca	16	16	0	16	8,222	0	0	0	0	0
Steuben	53	53	0	53	28,761	0	0	0	0	0
Suffolk	478	478	20	458	191,377	4	8	7	1	2,527
Sullivan	55	55	0	55	28,397	1	7	5	2	469
Tioga	5	5	1	4	3,163	0	0	0	0	0
Tompkins	86	86	1	85	41,446	2	4	0	4	980
Ulster	93	93	1	92	63,210	0	0	0	0	0
Warren	9	9	0	9	6,920	0	0	0	0	0
Washington	19	19	2	17	10,921	0	0	0	0	0
Wayne	42	42	0	42	28,013	0	0	0	0	0
Westchester	597	597	0	597	307,468	8	16	0	16	4,283
Wyoming	8	8	0	8	2,491	0	0	0	0	0
Yates	1	1	0	1	286	0	0	0	0	0

Note: A breakout of One-Person and Multi-Person cases is not available for New York City.

Table 16
FOOD STAMPS
 Households, Persons and Value of Food Stamps Benefits by Local District
 June 2001

Local District	Total			Temporary Assistance			Non-Temporary Assistance		
	Households	Persons	Food Stamps Benefits	Households	Persons	Food Stamps Benefits	Households	Persons	Food Stamps Benefits
New York State	668,245	1,324,954	\$116,372,049	475,561	859,217	\$82,214,294	192,684	465,737	\$34,157,755
New York City	430,425	836,157	79,258,430	350,866	651,788	64,608,361	79,559	184,369	14,650,069
Rest of State	237,820	488,797	37,113,619	124,695	207,429	17,605,933	113,125	281,368	19,507,686
Albany	8,308	16,932	1,319,028	4,796	8,395	729,433	3,512	8,537	589,595
Allegany	1,749	3,565	250,467	843	1,336	105,654	906	2,229	144,813
Broome	5,359	10,457	787,745	2,883	4,569	387,569	2,476	5,888	400,176
Cattaraugus	2,719	5,366	364,335	1,159	1,661	133,366	1,560	3,705	230,969
Cayuga	1,949	4,171	304,373	745	1,063	83,702	1,204	3,108	220,671
Chautauqua	5,113	10,766	818,547	2,700	4,512	405,899	2,413	6,254	412,648
Chemung	2,513	5,272	375,275	1,246	1,972	160,859	1,267	3,300	214,416
Chenango	1,570	3,322	237,879	497	706	60,869	1,073	2,616	177,010
Clinton	2,800	5,297	384,605	1,321	1,692	134,873	1,479	3,605	249,732
Columbia	1,313	2,397	177,246	622	884	75,906	691	1,513	101,340
Cortland	1,334	2,679	201,549	631	977	78,747	703	1,702	122,802
Delaware	1,218	2,215	151,749	486	598	44,918	732	1,617	106,831
Dutchess	3,409	6,089	464,290	1,626	2,458	215,466	1,783	3,631	248,824
Erie	35,723	72,710	5,668,880	19,417	32,995	2,953,670	16,306	39,715	2,715,210
Essex	1,077	1,950	124,160	494	647	44,003	583	1,303	80,157
Franklin	1,502	3,004	202,480	639	804	59,238	863	2,200	143,242
Fulton	1,744	3,689	272,887	725	967	81,227	1,019	2,722	191,660
Genesee	1,122	2,249	158,469	485	670	55,464	637	1,579	103,005
Greene	1,263	2,468	186,444	596	899	78,435	667	1,569	108,009
Hamilton	149	213	11,185	27	35	2,489	122	178	8,696
Herkimer	1,785	3,663	257,912	632	864	65,590	1,153	2,799	192,322
Jefferson	3,403	7,420	535,424	1,547	2,384	190,184	1,856	5,036	345,240
Lewis	777	1,635	112,992	269	343	25,121	508	1,292	87,871
Livingston	1,534	2,907	216,941	685	1,058	93,168	849	1,849	123,773
Madison	1,389	2,803	209,200	519	608	45,477	870	2,195	163,723
Monroe	25,690	55,104	4,228,891	15,606	29,621	2,521,745	10,084	25,483	1,707,146
Montgomery	1,785	3,954	306,353	613	811	68,056	1,172	3,143	238,297
Nassau	9,619	16,816	1,317,288	6,041	9,350	795,026	3,578	7,466	522,262
Niagara	5,956	11,951	904,511	3,296	5,625	468,956	2,660	6,326	435,555
Oneida	8,852	18,721	1,391,446	3,928	6,265	523,010	4,924	12,456	868,436
Onondaga	12,717	28,054	2,195,435	6,763	12,452	1,076,509	5,954	15,602	1,118,926
Ontario	2,123	3,884	279,732	961	1,368	114,162	1,162	2,516	165,570
Orange	7,288	18,525	1,507,936	3,285	6,790	605,117	4,003	11,735	902,819
Orleans	1,199	2,646	193,832	568	987	86,189	631	1,659	107,643
Oswego	3,330	7,804	577,025	1,304	1,965	160,341	2,026	5,839	416,684
Otsego	1,170	2,145	148,088	414	458	34,175	756	1,687	113,913
Putnam	469	646	40,458	266	325	22,071	203	321	18,387
Rensselaer	3,688	7,528	594,273	1,772	2,878	256,616	1,916	4,650	337,657
Rockland	4,671	14,848	1,145,090	1,854	3,610	242,469	2,817	11,238	902,621
St. Lawrence	3,359	6,862	491,930	1,591	2,356	195,114	1,768	4,506	296,816
Saratoga	2,559	4,822	351,268	865	924	69,002	1,694	3,898	282,266
Schenectady	3,997	8,589	649,539	1,683	2,542	213,273	2,314	6,047	436,266
Schoharie	731	1,425	94,519	266	302	21,823	465	1,123	72,696
Schuyler	411	805	55,966	198	290	23,702	213	515	32,264
Seneca	818	1,510	105,752	314	428	33,545	504	1,082	72,207
Steuben	2,601	5,488	396,470	1,235	1,929	156,977	1,366	3,559	239,493
Suffolk	13,983	25,159	1,912,342	8,842	14,144	1,161,258	5,141	11,015	751,084
Sullivan	2,012	3,968	277,289	972	1,389	111,099	1,040	2,579	166,190
Tioga	936	1,964	140,669	432	641	52,047	504	1,323	88,622
Tompkins	1,811	3,462	244,367	933	1,421	109,975	878	2,041	134,392
Ulster	3,447	6,211	447,149	1,839	2,766	224,831	1,608	3,445	222,318
Warren	1,515	2,841	211,706	746	1,099	87,977	769	1,742	123,729
Washington	1,499	2,961	204,837	634	817	63,934	865	2,144	140,903
Wayne	2,134	3,736	263,030	950	1,232	102,016	1,184	2,504	161,014
Westchester	15,230	30,506	2,459,830	10,381	18,843	1,633,926	4,849	11,663	825,904
Wyoming	726	1,410	100,862	323	434	37,382	403	976	63,480
Yates	672	1,213	81,674	230	270	22,283	442	943	59,391

Note: Food Stamps households containing only SSI recipients are counted as TA in accordance with Federal reporting requirements.

Note: Rest of State data does not include the following FAP data: 66 households, 78 persons, and \$7,246 in expenditures.

Table 17
SUPPLEMENTAL SECURITY INCOME
 Recipients, Total Program Expenditures, Federal and State Shares, by Local District
 June 2001

Local District	Expenditures			
	Recipients	Total	Federal	State
New York State*	622,970	\$281,355,203	\$233,893,101	\$47,462,102
New York City	395,323	184,893,580	157,298,888	27,594,692
Rest of State	217,176	92,890,584	74,277,966	18,612,618
Albany	6,303	2,677,423	2,113,060	564,363
Allegany	1,472	636,563	512,868	123,695
Broome	5,011	2,165,358	1,783,830	381,528
Cattaraugus	2,327	1,003,077	816,928	186,149
Cayuga	1,724	745,922	584,583	161,339
Chautauqua	3,837	1,626,286	1,318,804	307,482
Chemung	2,744	1,190,618	980,882	209,736
Chenango	1,303	517,770	434,639	83,131
Clinton	2,464	1,041,754	851,596	190,158
Columbia	1,502	594,332	451,225	143,107
Cortland	1,195	514,243	419,138	95,105
Delaware	1,172	434,131	345,664	88,467
Dutchess	4,270	1,815,164	1,367,919	447,245
Erie	25,021	11,370,996	9,291,192	2,079,804
Essex	942	372,625	269,037	103,588
Franklin	1,578	640,281	506,323	133,958
Fulton	1,637	641,244	505,478	135,766
Genesee	975	385,414	304,189	81,225
Greene	1,071	408,450	323,638	84,812
Hamilton	78	27,763	23,315	4,448
Herkimer	1,538	614,580	492,517	122,063
Jefferson	2,817	1,155,974	935,653	220,321
Lewis	637	252,202	204,694	47,508
Livingston	902	396,769	329,651	67,118
Madison	1,197	467,331	365,715	101,616
Monroe	17,422	7,904,506	6,452,219	1,452,287
Montgomery	1,278	484,474	388,415	96,059
Nassau	16,713	6,971,180	5,394,148	1,577,032
Niagara	4,775	2,018,321	1,612,493	405,828
Oneida	7,057	3,074,046	2,531,262	542,784
Onondaga	11,098	4,878,786	4,063,325	815,461
Ontario	1,522	621,970	496,140	125,830
Orange	5,916	2,494,413	2,028,534	465,879
Orleans	906	354,914	293,924	60,990
Oswego	2,843	1,154,365	965,870	188,495
Otsego	1,302	525,399	395,805	129,594
Putnam	732	328,500	238,385	90,115
Rensselaer	3,078	1,320,656	1,042,136	278,520
Rockland	4,421	1,891,373	1,368,542	522,831
St.Lawrence	3,572	1,474,385	1,225,280	249,105
Saratoga	2,454	924,737	728,514	196,223
Schenectady	3,693	1,583,991	1,278,536	305,455
Schoharie	705	288,755	210,806	77,949
Schuyler	483	186,810	145,712	41,098
Seneca	692	271,476	216,802	54,674
Steuben	2,857	1,249,578	1,040,972	208,606
Suffolk	20,780	8,963,845	6,867,145	2,096,700
Sullivan	2,519	1,059,381	783,757	275,624
Tioga	975	414,535	355,724	58,811
Tompkins	1,478	611,643	480,633	131,010
Ulster	3,969	1,680,196	1,342,092	338,104
Warren	1,425	538,667	436,992	101,675
Washington	1,412	591,853	475,929	115,924
Wayne	1,768	692,802	557,969	134,833
Westchester	14,550	6,212,673	4,993,583	1,219,090
Wyoming	611	247,019	197,160	49,859
Yates	453	179,065	136,624	42,441
Mental Hygiene	10,471	3,571,039	2,316,247	1,254,792

* Only NYS includes Mental Hygiene

Table 18
SUPPLEMENTAL SECURITY INCOME
 SSI Recipients by Living Arrangement and Location
 June 2001

Living Arrangement	New York State	New York City	Rest of State	Mental Hygiene
Living Alone	323,905	222,082	101,775	48
Living With Others	210,170	132,267	77,878	25
Living in Household of Another	24,435	15,428	9,006	1
Congregate Care Level I	5,933	604	501	4,828
Congregate Care Level II	36,612	14,212	21,881	519
Congregate Care Level III	213	59	154	0
Title XIX Institution	21,702	10,671	5,981	5,050
Total	622,970	395,323	217,176	10,471

Table 19
SUPPLEMENTAL SECURITY INCOME
 SSI Recipients by Living Arrangement and Category of Assistance
 June 2001

Living Arrangement	Total	Category of Assistance		
		Aged	Blind	Disabled
Living Alone	323,905	101,726	1,723	220,456
Living With Others	210,170	17,498	1,129	191,543
Living in Household of Another	24,435	10,239	159	14,037
Congregate Care Level I	5,933	327	28	5,578
Congregate Care Level II	36,612	5,294	187	31,131
Congregate Care Level III	213	0	0	213
Title XIX Institution	21,702	3,789	129	17,784
Total	622,970	138,873	3,355	480,742

Table 20
CHILD SUPPORT COLLECTIONS (IV-D)
June 2001

Local District	Total	Current Assistance	Former Assistance	Never Assistance
New York State	\$132,361,805	\$14,943,182	\$52,956,123	\$64,462,500
New York City	50,190,296	9,424,004	21,203,275	19,563,017
Rest of State	82,171,509	5,519,178	31,752,848	44,899,483
Albany	2,321,884	146,215	760,157	1,415,512
Allegany	529,181	47,320	311,990	169,871
Broome	1,481,700	91,649	611,373	778,678
Cattaraugus	912,260	78,349	467,247	366,664
Cayuga	786,489	27,787	305,449	453,253
Chautauqua	1,470,357	118,017	884,949	467,391
Chemung	981,826	54,991	398,382	528,453
Chenango	522,577	23,590	171,839	327,148
Clinton	778,021	40,381	359,203	378,437
Columbia	497,362	18,930	208,954	269,478
Cortland	477,500	23,227	195,669	258,604
Delaware	453,930	17,725	181,970	254,235
Dutchess	2,245,740	96,833	672,050	1,476,857
Erie	5,802,258	524,598	3,121,803	2,155,857
Essex	383,626	15,295	212,839	155,492
Franklin	581,869	20,332	275,825	285,712
Fulton	583,598	18,897	239,089	325,612
Genesee	507,300	19,375	194,289	293,636
Greene	438,112	22,866	157,154	258,092
Hamilton	47,224	379	17,436	29,409
Herkimer	624,557	23,338	291,540	309,679
Jefferson	1,168,293	64,687	499,011	604,595
Lewis	267,561	5,898	107,058	154,605
Livingston	647,405	34,221	229,756	383,428
Madison	533,307	14,210	220,655	298,442
Monroe	5,514,329	651,985	2,507,739	2,354,605
Montgomery	515,818	21,836	223,943	270,039
Nassau	6,972,038	331,615	1,678,946	4,961,477
Niagara	1,833,068	194,376	976,777	661,915
Oneida	1,544,450	127,312	752,381	664,757
Onondaga	4,173,918	294,109	1,969,440	1,910,369
Ontario	1,012,229	48,795	366,897	596,537
Orange	2,727,145	203,367	816,033	1,707,745
Orleans	371,961	28,298	181,576	162,087
Oswego	1,311,302	60,466	680,449	570,387
Otsego	451,307	11,527	137,424	302,356
Putnam	611,023	4,111	122,019	484,893
Rensselaer	1,394,125	65,315	525,214	803,596
Rockland	1,871,013	86,638	548,693	1,235,682
St. Lawrence	1,014,786	51,176	541,782	421,828
Saratoga	1,464,366	26,876	301,774	1,135,716
Schenectady	1,288,457	65,238	396,839	826,380
Schoharie	329,613	15,220	138,363	176,030
Schuyler	159,437	4,767	57,564	97,106
Seneca	371,493	12,268	117,832	241,393
Steuben	904,711	52,462	450,685	401,564
Suffolk	10,123,027	669,691	3,169,808	6,283,528
Sullivan	602,822	46,607	253,702	302,513
Tioga	479,358	29,036	215,880	234,442
Tompkins	660,357	21,606	292,479	346,272
Ulster	1,335,474	91,934	417,892	825,648
Warren	773,036	25,828	259,695	487,513
Washington	705,870	27,442	271,065	407,363
Wayne	911,672	28,309	294,908	588,455
Westchester	5,127,350	646,653	1,750,664	2,730,033
Wyoming	366,975	18,183	150,513	198,279
Yates	205,042	7,022	88,185	109,835

Note: Effective February 1999, collection amounts include collections made on behalf of other states.