



**Office of Temporary
and Disability Assistance**

Temporary and Disability Assistance Statistics

January 2015



Temporary and Disability Assistance Statistics

JANUARY 2015

Temporary Assistance

Temporary Assistance recipients totaled 569,551 in January 2015, decreasing by 3,777 (-0.7%) from the previous month. Related expenditures totaled \$185,310,788 in January 2015, decreasing by approximately \$6.6 million (-3.4%) over December 2014.

Supplemental Nutrition Assistance Program

Supplemental Nutrition Assistance Program recipients totaled 3,055,942 in January 2015, decreasing by 19,788 (-0.6%) from the previous month. Related expenditures totaled \$424,847,862 in January 2015, decreasing by approximately \$6.5 million (-1.5%) over December 2014.

Supplemental Security Income

Supplemental Security Income recipients (including Mental Hygiene) totaled 719,686 in January 2015, increasing by 2,646 (+0.4%) from the previous month. Related expenditures totaled \$416,670,229 in January 2015, increasing by approximately \$3.0 million (+0.7%) over December 2014.

Note: New York State's October 2014 administrative takeover of the State Supplement portion of the Supplemental Security Income (SSI) benefit precipitated systems changes that disrupted the pre-existing statistical reporting processes for the SSI program overall. This has resulted in overcounting program participants and possibly expenditures on the monthly reports from October 2014 to the present. The New York State Office of Information Technology Services is working on tracing and correcting the cause of this problem, but, until these adjustments are made, the SSI statistics contained in this report are included to fulfill statutory reporting requirements only and should not be used for trending or other purposes.

Note: Effective January 2015, the source of Supplemental Nutrition Assistance Program (SNAP) data for non-New York City districts was changed to utilize a more efficient reporting platform and to better assess the Temporary Assistance (TA) and Supplemental Security Income (SSI) participation of SNAP recipients. While the overall figures for households, persons and expenditures were negligibly impacted by this change, there was a shift of 46,652 persons and 20,544 cases from the Non-TA to the TA classification (households where all persons were either TA or SSI recipients during the month). While the accuracy of the classifications has improved, trends using the TA and Non-TA classifications for the state as a whole and non-New York City districts must be constructed and interpreted with caution.

Date Revised May 29, 2015

Table of Contents

Ten Year Trend Graphs

Temporary Assistance Recipients	4
Supplemental Nutrition Assistance Program Recipients	4
Supplemental Security Income Recipients	4

Temporary Assistance, SSI and SNAP Summary

Table 1:	Temporary Assistance, Family Assistance-FP, Safety Net Assistance, Supplemental Security Income and Supplemental Nutrition Assistance Program Cases by Region	5
Table 2:	Temporary Assistance, Family Assistance-FP, Safety Net Assistance, Supplemental Security Income and Supplemental Nutrition Assistance Program Recipients by Region	5
Table 3:	Temporary Assistance, Family Assistance-FP, Safety Net Assistance, Supplemental Security Income and Supplemental Nutrition Assistance Program Expenditures by Region	5

Temporary Assistance by Program Area

Table 4:	Temporary Assistance Year to Year Monthly Comparison Cases, Recipients and Expenditures	6
Table 5:	Temporary Assistance Cases, Recipients, Children, Adults and Expenditures	7
Table 6:	Family Assistance-FP Cases, Recipients, Children, Adults and Expenditures	8
Table 7:	Safety Net Assistance Cases, Recipients, Children, Adults and Expenditures	9

Temporary Assistance by Funding Source and Program Area

Table 8:	Temporary Assistance by Funding Source (Federally Participating and Federally Non-Participating) Cases, Recipients and Expenditures	10
Table 9:	Temporary Assistance for Needy Families-FP by Program (Family Assistance-FP and Safety Net Assistance-FP) Cases, Recipients, Children, Adults and Expenditures	11
Table 10:	Safety Net Assistance-FNP and Family Assistance-FNP Cases, Recipients, Children, Adults and Expenditures	12
Table 11:	Safety Net Assistance-FNP by Maintenance of Effort Status Cases, Recipients, Children, Adults and Expenditures	13
Table 12:	Safety Net Assistance-FNP-Cash Total Cases, Recipients, Children, Adults and Expenditures	14
Table 13:	Safety Net Assistance-FNP-Cash by Maintenance of Effort Status Cases, Recipients, Children, Adults and Expenditures	15
Table 14:	Safety Net Assistance-FNP-Non-Cash Total Cases, Recipients, Children, Adults and Expenditures	16
Table 15:	Safety Net Assistance-FNP-Non-Cash by Maintenance of Effort Status Cases, Recipients, Children, Adults and Expenditures	17

Supplemental Nutrition Assistance Program

Table 16:	Supplemental Nutrition Assistance Program Households, Persons and Value of Supplemental Nutrition Assistance Program Benefits	18
------------------	---	----

Supplemental Security Income

Table 17:	Supplemental Security Income Recipients, Total Program Expenditures and Federal and State Shares	19
Table 18:	Supplemental Security Income Recipients by Living Arrangement and Location	20
Table 19:	Supplemental Security Income Recipients by Living Arrangement and Category of Assistance	20

Table of Contents

Child Support

Table 20:	Child Support Collections (IV-D)	21
------------------	----------------------------------	----

Aggregate Claims

Table 21:	Aggregate Claims - Total Temporary Assistance	22
Table 22:	Aggregate Claims - Federally Participating - TANF	23
Table 23:	Aggregate Claims - Federally Non-Participating Safety Net Assistance-FNP Maintenance of Effort	24
Table 24:	Aggregate Claims - Federally Non-Participating Safety Net Assistance-FNP and Family Assistance-FNP Maintenance of Effort	25

Home Energy Assistance Program

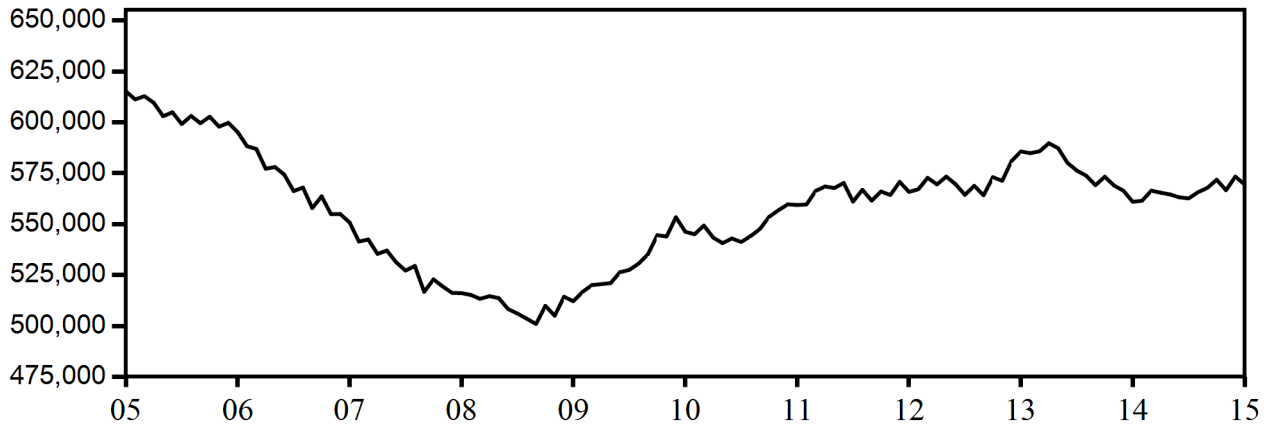
Table 25:	Home Energy Assistance Program Number and Dollar Amount of Benefits Authorized and Administrative Allocations	26
Table 26:	Home Energy Assistance Program - Non-Emergency Number, Total Dollar Amount and Average Dollar Amount of Benefits Authorized	27
Table 27:	Home Energy Assistance Program - Emergency Number, Total Dollar Amount and Average Dollar Amount of Benefits Authorized	28

Welfare to Work Statistical Tables

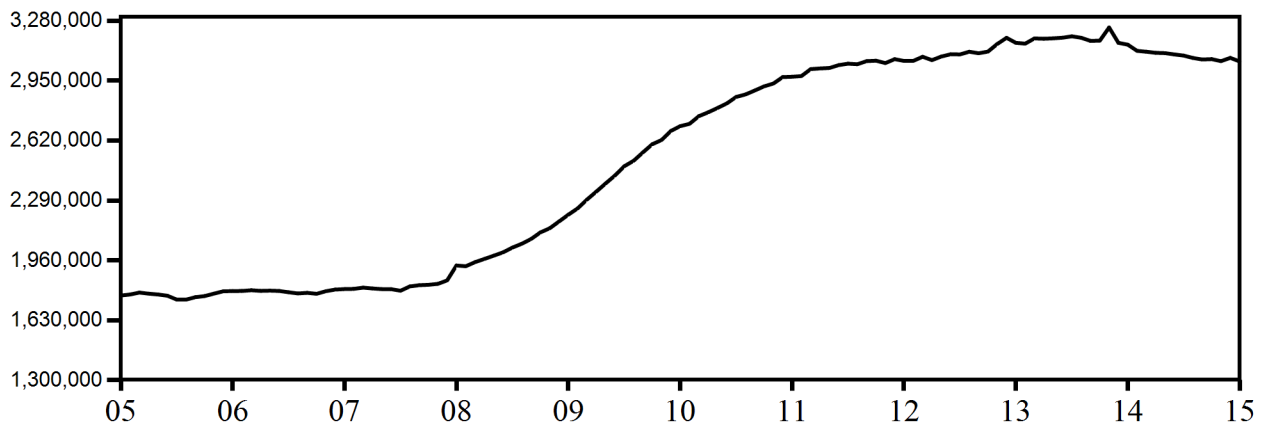
Table 28:	Federal All Families Work Participation Rates TANF, Safety Net Assistance MOE and Combined TANF and Safety Net Assistance MOE	29
Table 29:	Work Sanction Status by Presence in Federal All Families Work Participation Calculation TANF, Safety Net Assistance MOE and Combined TANF and Safety Net Assistance MOE	30
Table 30:	Temporary Assistance Cases with Earned Income Cases, Average Gross Earned Income and Average Net Earned Income after Application of Disregards	31

**NEW YORK STATE
February 2005 - January 2015
TEN YEAR TREND**

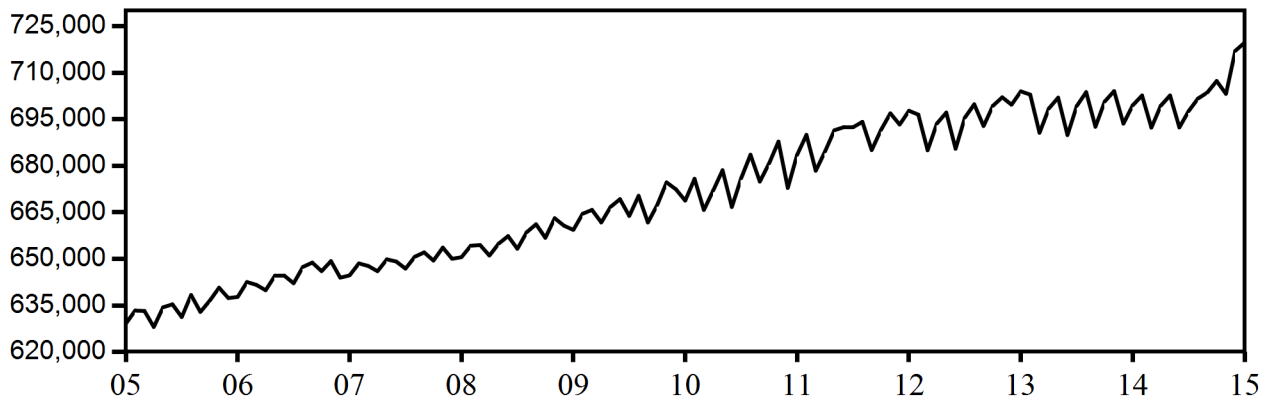
Temporary Assistance Recipients



Supplemental Nutrition Assistance Program Recipients



**Supplemental Security Income Recipients
(Including Mental Hygiene)**



SELECTED SUMMARY PROGRAM DATA
BY REGION

Table 1
TEMPORARY AND DISABILITY ASSISTANCE CASES
January 2015

Region	Cases				
	Temporary Assistance by Program			Supplemental Security Income	Supplemental Nutrition Assistance Program
	Total	Family Assistance-FP	Safety Net Assistance		
New York State	297,128	107,366	189,762	714,629	1,673,567
New York City	184,381	59,041	125,340	433,950	963,436
Rest of State	112,747	48,325	64,422	280,679	710,131

Table 2
TEMPORARY AND DISABILITY ASSISTANCE RECIPIENTS
January 2015

Region	Recipients				
	Temporary Assistance by Program			Supplemental Security Income	Supplemental Nutrition Assistance Program
	Total	Family Assistance-FP	Safety Net Assistance		
New York State	569,551	248,245	321,306	714,629	3,055,942
New York City	343,400	135,769	207,631	433,950	1,722,856
Rest of State	226,151	112,476	113,675	280,679	1,333,086

Table 3
TEMPORARY AND DISABILITY ASSISTANCE EXPENDITURES
January 2015

Region	Expenditures				
	Temporary Assistance by Program			Supplemental Security Income	Supplemental Nutrition Assistance Program
	Total	Family Assistance-FP	Safety Net Assistance		
New York State	\$185,310,788	\$68,029,922	\$117,280,866	\$414,459,750	\$424,847,862
New York City	113,633,859	35,501,304	78,132,555	255,346,712	250,356,331
Rest of State	71,676,929	32,528,618	39,148,311	159,113,038	174,491,531

Note: Supplemental Security Income data listed here do not include Mental Hygiene data. See Tables 17 - 19 for total Supplemental Security Income data.

Table 4
TEMPORARY ASSISTANCE
 Year to Year Monthly Comparison by Local District
 Cases, Recipients and Expenditures
 January 2015

Local District	January 2015			January 2014			January 2013		
	Cases	Recipients	Expenditures	Cases	Recipients	Expenditures	Cases	Recipients	Expenditures
New York State	297,128	569,551	\$185,310,788	292,139	560,991	\$178,687,786	306,001	585,685	\$188,976,992
New York City	184,381	343,400	113,633,859	179,628	333,708	108,124,968	192,547	359,214	117,252,737
Rest of State	112,747	226,151	71,676,929	112,511	227,283	70,562,818	113,454	226,471	71,724,255
Albany	2,646	5,919	1,450,891	2,928	6,465	1,827,003	2,983	6,528	2,048,089
Allegany	506	967	260,502	503	976	247,539	604	1,157	295,360
Broome	3,814	7,158	1,965,318	3,715	7,260	2,094,458	3,993	7,712	2,267,405
Cattaraugus	648	1,058	306,446	579	953	313,022	517	839	249,544
Cayuga	833	1,569	463,279	824	1,569	466,169	702	1,364	398,906
Chautauqua	2,713	5,751	1,344,785	2,656	5,807	1,445,798	2,683	5,851	1,487,334
Chemung	857	1,497	476,375	811	1,435	438,949	865	1,627	489,666
Chenango	472	835	224,251	386	692	229,879	395	702	176,499
Clinton	855	1,390	485,685	875	1,481	547,982	929	1,594	620,687
Columbia	546	1,035	309,944	564	1,071	321,845	528	1,010	284,756
Cortland	664	1,088	382,862	674	1,219	409,869	605	1,152	337,887
Delaware	280	506	144,938	302	505	158,301	288	495	151,680
Dutchess	1,314	2,411	1,012,687	1,368	2,511	1,007,448	1,482	2,806	1,037,389
Erie	15,060	33,087	7,449,542	14,245	31,174	7,297,190	13,627	29,215	7,008,670
Essex	137	233	101,429	127	214	101,472	139	228	85,791
Franklin	529	982	271,451	514	987	265,774	514	942	243,273
Fulton	345	567	195,664	366	641	194,439	335	621	190,465
Genesee	296	580	178,276	346	658	193,911	337	628	202,382
Greene	428	796	222,165	514	979	292,753	593	1,144	343,831
Hamilton	14	16	4,930	12	16	3,190	17	23	9,947
Herkimer	528	945	277,588	488	874	270,825	536	982	273,675
Jefferson	1,179	1,971	640,578	955	1,576	561,575	917	1,484	526,315
Lewis	126	207	63,031	116	187	57,852	119	200	59,689
Livingston	859	1,635	454,873	860	1,634	471,868	724	1,369	420,182
Madison	398	707	233,958	406	735	218,933	389	751	217,405
Monroe	15,155	31,503	8,464,822	16,703	34,080	9,949,125	16,475	33,244	9,194,631
Montgomery	522	1,241	282,396	551	1,328	319,358	569	1,307	334,232
Nassau	7,691	13,958	6,252,109	7,137	13,164	4,945,888	7,691	14,092	5,531,901
Niagara	3,287	6,414	1,581,858	3,272	6,316	1,644,958	3,231	6,259	1,683,472
Oneida	4,614	10,833	2,598,398	4,417	10,454	2,447,200	4,234	9,955	2,370,018
Onondaga	7,451	16,191	3,806,834	7,103	15,644	3,572,333	7,660	16,303	3,889,837
Ontario	893	1,516	523,884	860	1,508	488,105	798	1,447	478,446
Orange	2,867	6,132	2,201,433	3,072	6,514	2,254,458	3,225	6,974	2,421,498
Orleans	718	1,284	387,359	722	1,348	354,233	661	1,182	371,534
Oswego	1,732	3,702	950,008	1,711	3,627	944,592	1,586	3,286	918,453
Otsego	195	290	131,926	242	362	217,205	207	350	162,177
Putnam	141	204	130,150	130	179	108,800	118	161	145,582
Rensselaer	1,737	4,234	1,106,413	1,732	4,368	1,103,533	1,667	4,135	1,056,195
Rockland	1,507	2,949	898,628	1,652	3,274	1,033,445	1,712	3,428	1,070,975
St. Lawrence	1,337	2,619	682,610	1,266	2,559	653,030	1,234	2,391	646,823
Saratoga	418	639	252,545	415	613	278,762	429	589	274,740
Schenectady	1,853	4,129	1,191,373	2,005	4,390	1,294,329	1,784	3,900	1,128,218
Schoharie	207	366	122,731	228	401	142,928	183	305	145,358
Schuyler	230	430	129,743	246	462	140,213	224	402	136,538
Seneca	273	526	149,775	261	498	147,171	207	373	108,528
Steuben	1,003	1,885	511,046	1,017	1,982	557,073	925	1,801	465,249
Suffolk	10,578	19,093	10,352,539	9,953	18,510	8,428,402	10,701	19,353	8,539,830
Sullivan	621	1,246	412,188	810	1,698	484,976	1,168	2,382	876,770
Tioga	388	648	219,289	394	662	235,534	383	634	222,033
Tompkins	805	1,395	423,297	932	1,643	594,539	837	1,494	444,212
Ulster	2,194	4,026	1,524,181	2,108	4,003	1,485,645	2,132	4,051	1,469,014
Warren	219	379	144,762	224	378	133,967	222	350	153,635
Washington	358	606	220,770	353	609	245,240	337	580	231,696
Wayne	637	1,052	333,500	635	1,066	313,753	634	1,080	320,508
Westchester	6,724	13,181	6,560,733	6,848	13,378	6,409,493	7,056	13,661	7,321,187
Wyoming	180	297	98,532	210	366	108,340	185	334	96,037
Yates	165	273	109,649	168	280	88,146	158	244	88,101

Table 5
TEMPORARY ASSISTANCE
Cases, Recipients, Children, Adults and Expenditures by Local District
January 2015

Local District	Temporary Assistance				
	Cases	Recipients	Children	Adults	Expenditures
New York State	297,128	569,551	298,121	271,430	\$185,310,788
New York City	184,381	343,400	170,126	173,274	113,633,859
Rest of State	112,747	226,151	127,995	98,156	71,676,929
Albany	2,646	5,919	3,662	2,257	1,450,891
Allegany	506	967	549	418	260,502
Broome	3,814	7,158	3,982	3,176	1,965,318
Cattaraugus	648	1,058	603	455	306,446
Cayuga	833	1,569	848	721	463,279
Chautauqua	2,713	5,751	3,297	2,454	1,344,785
Chemung	857	1,497	953	544	476,375
Chenango	472	835	472	363	224,251
Clinton	855	1,390	811	579	485,685
Columbia	546	1,035	554	481	309,944
Cortland	664	1,088	500	588	382,862
Delaware	280	506	310	196	144,938
Dutchess	1,314	2,411	1,560	851	1,012,687
Erie	15,060	33,087	19,113	13,974	7,449,542
Essex	137	233	151	82	101,429
Franklin	529	982	501	481	271,451
Fulton	345	567	337	230	195,664
Genesee	296	580	340	240	178,276
Greene	428	796	427	369	222,165
Hamilton	14	16	7	9	4,930
Herkimer	528	945	543	402	277,588
Jefferson	1,179	1,971	946	1,025	640,578
Lewis	126	207	134	73	63,031
Livingston	859	1,635	813	822	454,873
Madison	398	707	410	297	233,958
Monroe	15,155	31,503	17,935	13,568	8,464,822
Montgomery	522	1,241	816	425	282,396
Nassau	7,691	13,958	7,245	6,713	6,252,109
Niagara	3,287	6,414	3,515	2,899	1,581,858
Oneida	4,614	10,833	6,277	4,556	2,598,398
Onondaga	7,451	16,191	9,497	6,694	3,806,834
Ontario	893	1,516	809	707	523,884
Orange	2,867	6,132	3,642	2,490	2,201,433
Orleans	718	1,284	684	600	387,359
Oswego	1,732	3,702	2,087	1,615	950,008
Otsego	195	290	154	136	131,926
Putnam	141	204	103	101	130,150
Rensselaer	1,737	4,234	2,701	1,533	1,106,413
Rockland	1,507	2,949	1,748	1,201	898,628
St. Lawrence	1,337	2,619	1,373	1,246	682,610
Saratoga	418	639	409	230	252,545
Schenectady	1,853	4,129	2,624	1,505	1,191,373
Schoharie	207	366	213	153	122,731
Schuyler	230	430	211	219	129,743
Seneca	273	526	299	227	149,775
Steuben	1,003	1,885	1,041	844	511,046
Suffolk	10,578	19,093	9,537	9,556	10,352,539
Sullivan	621	1,246	840	406	412,188
Tioga	388	648	433	215	219,289
Tompkins	805	1,395	687	708	423,297
Ulster	2,194	4,026	2,052	1,974	1,524,181
Warren	219	379	234	145	144,762
Washington	358	606	367	239	220,770
Wayne	637	1,052	580	472	333,500
Westchester	6,724	13,181	7,722	5,459	6,560,733
Wyoming	180	297	173	124	98,532
Yates	165	273	164	109	109,649

Table 6
FAMILY ASSISTANCE-FP
Cases, Recipients, Children, Adults and Expenditures by Local District
January 2015

Local District	Family Assistance-FP				
	Cases	Recipients	Children	Adults	Expenditures
New York State	107,366	248,245	184,234	64,011	\$68,029,922
New York City	59,041	135,769	100,814	34,955	35,501,304
Rest of State	48,325	112,476	83,420	29,056	32,528,618
Albany	1,340	3,130	2,308	822	786,219
Allegany	234	528	398	130	122,778
Broome	1,606	3,441	2,594	847	858,113
Cattaraugus	315	631	501	130	163,982
Cayuga	374	881	636	245	213,030
Chautauqua	1,232	2,876	2,076	800	654,102
Chemung	443	913	757	156	241,043
Chenango	233	496	381	115	120,084
Clinton	437	827	671	156	228,485
Columbia	248	593	433	160	148,189
Cortland	236	509	368	141	140,686
Delaware	159	345	278	67	89,374
Dutchess	671	1,397	1,152	245	537,425
Erie	6,506	15,818	11,476	4,342	3,528,248
Essex	81	163	133	30	52,158
Franklin	223	512	356	156	118,828
Fulton	172	361	300	61	106,292
Genesee	153	366	271	95	86,108
Greene	170	372	276	96	83,604
Hamilton	7	9	7	2	3,053
Herkimer	271	582	442	140	140,891
Jefferson	431	948	718	230	228,975
Lewis	72	143	120	23	35,669
Livingston	362	870	590	280	204,416
Madison	190	414	320	94	115,276
Monroe	6,114	14,674	10,626	4,048	3,782,343
Montgomery	329	843	636	207	178,061
Nassau	2,823	6,311	4,736	1,575	2,590,239
Niagara	1,369	3,137	2,273	864	712,802
Oneida	1,977	5,223	3,737	1,486	1,218,460
Onondaga	3,360	8,013	5,820	2,193	1,834,827
Ontario	398	841	646	195	225,023
Orange	1,238	2,959	2,219	740	1,004,985
Orleans	283	595	445	150	161,384
Oswego	817	2,047	1,457	590	486,186
Otsego	95	175	138	37	69,965
Putnam	58	113	94	19	37,399
Rensselaer	1,006	2,410	1,725	685	646,435
Rockland	650	1,490	1,223	267	414,181
St. Lawrence	552	1,257	909	348	298,526
Saratoga	225	423	366	57	118,056
Schenectady	967	2,255	1,703	552	620,466
Schoharie	104	232	184	48	59,367
Schuyler	87	218	154	64	48,629
Seneca	118	273	208	65	60,913
Steuben	414	950	716	234	218,553
Suffolk	3,737	8,881	6,543	2,338	4,327,265
Sullivan	340	731	603	128	223,164
Tioga	243	470	392	78	133,692
Tompkins	301	635	460	175	159,561
Ulster	917	2,055	1,461	594	631,877
Warren	125	252	201	51	86,278
Washington	179	373	307	66	108,380
Wayne	310	641	492	149	159,320
Westchester	2,832	6,503	5,088	1,415	2,796,630
Wyoming	102	202	157	45	57,704
Yates	89	169	139	30	50,919

Table 7
SAFETY NET ASSISTANCE*
Cases, Recipients, Children, Adults and Expenditures by Local District
January 2015

Local District	Safety Net Assistance					Expenditures
	Cases	Recipients	Children	Adults		
New York State	189,762	321,306	113,887	207,419		\$117,280,866
New York City	125,340	207,631	69,312	138,319		78,132,555
Rest of State	64,422	113,675	44,575	69,100		39,148,311
Albany	1,306	2,789	1,354	1,435		664,672
Allegany	272	439	151	288		137,724
Broome	2,208	3,717	1,388	2,329		1,107,205
Cattaraugus	333	427	102	325		142,464
Cayuga	459	688	212	476		250,249
Chautauqua	1,481	2,875	1,221	1,654		690,683
Chemung	414	584	196	388		235,332
Chenango	239	339	91	248		104,167
Clinton	418	563	140	423		257,200
Columbia	298	442	121	321		161,755
Cortland	428	579	132	447		242,176
Delaware	121	161	32	129		55,564
Dutchess	643	1,014	408	606		475,262
Erie	8,554	17,269	7,637	9,632		3,921,294
Essex	56	70	18	52		49,271
Franklin	306	470	145	325		152,623
Fulton	173	206	37	169		89,372
Genesee	143	214	69	145		92,168
Greene	258	424	151	273		138,561
Hamilton	7	7	0	7		1,877
Herkimer	257	363	101	262		136,697
Jefferson	748	1,023	228	795		411,603
Lewis	54	64	14	50		27,362
Livingston	497	765	223	542		250,457
Madison	208	293	90	203		118,682
Monroe	9,041	16,829	7,309	9,520		4,682,479
Montgomery	193	398	180	218		104,335
Nassau	4,868	7,647	2,509	5,138		3,661,870
Niagara	1,918	3,277	1,242	2,035		869,056
Oneida	2,637	5,610	2,540	3,070		1,379,938
Onondaga	4,091	8,178	3,677	4,501		1,972,007
Ontario	495	675	163	512		298,861
Orange	1,629	3,173	1,423	1,750		1,196,448
Orleans	435	689	239	450		225,975
Oswego	915	1,655	630	1,025		463,822
Otsego	100	115	16	99		61,961
Putnam	83	91	9	82		92,751
Rensselaer	731	1,824	976	848		459,978
Rockland	857	1,459	525	934		484,447
St. Lawrence	785	1,362	464	898		384,084
Saratoga	193	216	43	173		134,489
Schenectady	886	1,874	921	953		570,907
Schoharie	103	134	29	105		63,364
Schuyler	143	212	57	155		81,114
Seneca	155	253	91	162		88,862
Steuben	589	935	325	610		292,493
Suffolk	6,841	10,212	2,994	7,218		6,025,274
Sullivan	281	515	237	278		189,024
Tioga	145	178	41	137		85,597
Tompkins	504	760	227	533		263,736
Ulster	1,277	1,971	591	1,380		892,304
Warren	94	127	33	94		58,484
Washington	179	233	60	173		112,390
Wayne	327	411	88	323		174,180
Westchester	3,892	6,678	2,634	4,044		3,764,103
Wyoming	78	95	16	79		40,828
Yates	76	104	25	79		58,730

* Includes Federally Non-Participating Family Assistance cases (non-disabled two-parent Family Assistance cases).

Table 8
TEMPORARY ASSISTANCE BY FUNDING SOURCE
 Cases, Recipients, and Expenditures by Local District
 January 2015

Local District	Total			Federally Participating-TANF Family Assistance-FP and Safety Net Assistance-FP			Federally Non-Participating Safety Net Assistance-FNP and Family Assistance-FNP		
	Cases	Recipients	Expenditures	Cases	Recipients	Expenditures	Cases	Recipients	Expenditures
New York State	297,128	569,551	\$185,310,788	108,565	251,342	\$68,789,520	188,563	318,209	\$116,521,268
New York City	184,381	343,400	113,633,859	59,260	136,237	35,594,929	125,121	207,163	78,038,930
Rest of State	112,747	226,151	71,676,929	49,305	115,105	33,194,591	63,442	111,046	38,482,338
Albany	2,646	5,919	1,450,891	1,354	3,168	798,804	1,292	2,751	652,087
Allegany	506	967	260,502	235	532	124,651	271	435	135,851
Broome	3,814	7,158	1,965,318	1,651	3,567	886,436	2,163	3,591	1,078,882
Cattaraugus	648	1,058	306,446	323	649	167,516	325	409	138,930
Cayuga	833	1,569	463,279	393	931	225,327	440	638	237,952
Chautauqua	2,713	5,751	1,344,785	1,241	2,895	657,971	1,472	2,856	686,814
Chemung	857	1,497	476,375	453	942	247,487	404	555	228,888
Chenango	472	835	224,251	236	505	120,914	236	330	103,337
Clinton	855	1,390	485,685	444	846	232,381	411	544	253,304
Columbia	546	1,035	309,944	252	605	149,287	294	430	160,657
Cortland	664	1,088	382,862	246	536	144,910	418	552	237,952
Delaware	280	506	144,938	159	345	89,374	121	161	55,564
Dutchess	1,314	2,411	1,012,687	681	1,423	549,699	633	988	462,988
Erie	15,060	33,087	7,449,542	6,587	16,029	3,572,873	8,473	17,058	3,876,669
Essex	137	233	101,429	83	169	53,993	54	64	47,436
Franklin	529	982	271,451	224	514	120,382	305	468	151,069
Fulton	345	567	195,664	177	376	110,381	168	191	85,283
Genesee	296	580	178,276	160	389	91,873	136	191	86,403
Greene	428	796	222,165	173	384	84,990	255	412	137,175
Hamilton	14	16	4,930	7	9	3,053	7	7	1,877
Herkimer	528	945	277,588	271	582	140,891	257	363	136,697
Jefferson	1,179	1,971	640,578	450	997	241,622	729	974	398,956
Lewis	126	207	63,031	74	148	37,543	52	59	25,488
Livingston	859	1,635	454,873	372	894	209,978	487	741	244,895
Madison	398	707	233,958	201	451	125,242	197	256	108,716
Monroe	15,155	31,503	8,464,822	6,452	15,580	3,972,836	8,703	15,923	4,491,986
Montgomery	522	1,241	282,396	333	853	180,950	189	388	101,446
Nassau	7,691	13,958	6,252,109	2,835	6,339	2,606,029	4,856	7,619	3,646,080
Niagara	3,287	6,414	1,581,858	1,436	3,304	746,345	1,851	3,110	835,513
Oneida	4,614	10,833	2,598,398	2,012	5,320	1,240,406	2,602	5,513	1,357,992
Onondaga	7,451	16,191	3,806,834	3,376	8,060	1,844,100	4,075	8,131	1,962,734
Ontario	893	1,516	523,884	402	855	228,443	491	661	295,441
Orange	2,867	6,132	2,201,433	1,251	2,995	1,018,794	1,616	3,137	1,182,639
Orleans	718	1,284	387,359	294	629	168,179	424	655	219,180
Oswego	1,732	3,702	950,008	843	2,140	504,784	889	1,562	445,224
Otsego	195	290	131,926	97	179	70,741	98	111	61,185
Putnam	141	204	130,150	58	113	37,399	83	91	92,751
Rensselaer	1,737	4,234	1,106,413	1,019	2,440	656,501	718	1,794	449,912
Rockland	1,507	2,949	898,628	654	1,500	415,659	853	1,449	482,969
St. Lawrence	1,337	2,619	682,610	557	1,266	302,915	780	1,353	379,695
Saratoga	418	639	252,545	228	429	120,102	190	210	132,443
Schenectady	1,853	4,129	1,191,373	969	2,260	622,687	884	1,869	568,686
Schoharie	207	366	122,731	105	233	60,055	102	133	62,676
Schuyler	230	430	129,743	87	218	48,629	143	212	81,114
Seneca	273	526	149,775	120	279	61,821	153	247	87,954
Steuben	1,003	1,885	511,046	414	950	218,553	589	935	292,493
Suffolk	10,578	19,093	10,352,539	3,798	9,047	4,410,022	6,780	10,046	5,942,517
Sullivan	621	1,246	412,188	344	740	226,970	277	506	185,218
Tioga	388	648	219,289	249	481	143,416	139	167	75,873
Tompkins	805	1,395	423,297	317	671	169,807	488	724	253,490
Ulster	2,194	4,026	1,524,181	925	2,074	640,631	1,269	1,952	883,550
Warren	219	379	144,762	131	276	90,686	88	103	54,076
Washington	358	606	220,770	189	398	115,586	169	208	105,184
Wayne	637	1,052	333,500	324	677	166,495	313	375	167,005
Westchester	6,724	13,181	6,560,733	2,848	6,542	2,808,849	3,876	6,639	3,751,884
Wyoming	180	297	98,532	102	202	57,704	78	95	40,828
Yates	165	273	109,649	89	169	50,919	76	104	58,730

Table 9
TEMPORARY ASSISTANCE FOR NEEDY FAMILIES-FP BY PROGRAM
 Cases, Recipients, Children, Adults and Expenditures by Local District
 January 2015

Local District	Family Assistance-FP					Safety Net Assistance-FP				
	Cases	Recipients	Children	Adults	Expenditures	Cases	Recipients	Children	Adults	Expenditures
New York State	107,366	248,245	184,234	64,011	\$68,029,922	1,199	3,097	1,835	1,262	\$759,598
New York City	59,041	135,769	100,814	34,955	35,501,304	219	468	327	141	93,625
Rest of State	48,325	112,476	83,420	29,056	32,528,618	980	2,629	1,508	1,121	665,973
Albany	1,340	3,130	2,308	822	786,219	14	38	24	14	12,585
Allegany	234	528	398	130	122,778	1	4	2	2	1,873
Broome	1,606	3,441	2,594	847	858,113	45	126	71	55	28,323
Cattaraugus	315	631	501	130	163,982	8	18	10	8	3,534
Cayuga	374	881	636	245	213,030	19	50	28	22	12,297
Chautauqua	1,232	2,876	2,076	800	654,102	9	19	9	10	3,869
Chemung	443	913	757	156	241,043	10	29	17	12	6,444
Chenango	233	496	381	115	120,084	3	9	5	4	830
Clinton	437	827	671	156	228,485	7	19	11	8	3,896
Columbia	248	593	433	160	148,189	4	12	7	5	1,098
Cortland	236	509	368	141	140,686	10	27	14	13	4,224
Delaware	159	345	278	67	89,374	0	0	0	0	0
Dutchess	671	1,397	1,152	245	537,425	10	26	15	11	12,274
Erie	6,506	15,818	11,476	4,342	3,528,248	81	211	120	91	44,625
Essex	81	163	133	30	52,158	2	6	4	2	1,835
Franklin	223	512	356	156	118,828	1	2	1	1	1,554
Fulton	172	361	300	61	106,292	5	15	10	5	4,089
Genesee	153	366	271	95	86,108	7	23	15	8	5,765
Greene	170	372	276	96	83,604	3	12	7	5	1,386
Hamilton	7	9	7	2	3,053	0	0	0	0	0
Herkimer	271	582	442	140	140,891	0	0	0	0	0
Jefferson	431	948	718	230	228,975	19	49	28	21	12,647
Lewis	72	143	120	23	35,669	2	5	3	2	1,874
Livingston	362	870	590	280	204,416	10	24	13	11	5,562
Madison	190	414	320	94	115,276	11	37	23	14	9,966
Monroe	6,114	14,674	10,626	4,048	3,782,343	338	906	530	376	190,493
Montgomery	329	843	636	207	178,061	4	10	6	4	2,889
Nassau	2,823	6,311	4,736	1,575	2,590,239	12	28	16	12	15,790
Niagara	1,369	3,137	2,273	864	712,802	67	167	91	76	33,543
Oneida	1,977	5,223	3,737	1,486	1,218,460	35	97	58	39	21,946
Onondaga	3,360	8,013	5,820	2,193	1,834,827	16	47	29	18	9,273
Ontario	398	841	646	195	225,023	4	14	8	6	3,420
Orange	1,238	2,959	2,219	740	1,004,985	13	36	21	15	13,809
Orleans	283	595	445	150	161,384	11	34	21	13	6,795
Oswego	817	2,047	1,457	590	486,186	26	93	56	37	18,598
Otsego	95	175	138	37	69,965	2	4	2	2	776
Putnam	58	113	94	19	37,399	0	0	0	0	0
Rensselaer	1,006	2,410	1,725	685	646,435	13	30	15	15	10,066
Rockland	650	1,490	1,223	267	414,181	4	10	5	5	1,478
St. Lawrence	552	1,257	909	348	298,526	5	9	3	6	4,389
Saratoga	225	423	366	57	118,056	3	6	3	3	2,046
Schenectady	967	2,255	1,703	552	620,466	2	5	3	2	2,221
Schoharie	104	232	184	48	59,367	1	1	0	1	688
Schuyler	87	218	154	64	48,629	0	0	0	0	0
Seneca	118	273	208	65	60,913	2	6	2	4	908
Steuben	414	950	716	234	218,553	0	0	0	0	0
Suffolk	3,737	8,881	6,543	2,338	4,327,265	61	166	91	75	82,757
Sullivan	340	731	603	128	223,164	4	9	5	4	3,806
Tioga	243	470	392	78	133,692	6	11	5	6	9,724
Tompkins	301	635	460	175	159,561	16	36	16	20	10,246
Ulster	917	2,055	1,461	594	631,877	8	19	8	11	8,754
Warren	125	252	201	51	86,278	6	24	16	8	4,408
Washington	179	373	307	66	108,380	10	25	16	9	7,206
Wayne	310	641	492	149	159,320	14	36	22	14	7,175
Westchester	2,832	6,503	5,088	1,415	2,796,630	16	39	23	16	12,219
Wyoming	102	202	157	45	57,704	0	0	0	0	0
Yates	89	169	139	30	50,919	0	0	0	0	0

Table 10
 SAFETY NET ASSISTANCE-FNP AND FAMILY ASSISTANCE-FNP
 Cases, Recipients, Children, Adults and Expenditures by Local District
 January 2015

Local District	Safety Net Assistance-FNP and Family Assistance-FNP				
	Cases	Recipients	Children	Adults	Expenditures
New York State	188,563	318,209	112,052	206,157	\$116,521,268
New York City	125,121	207,163	68,985	138,178	78,038,930
Rest of State	63,442	111,046	43,067	67,979	38,482,338
Albany	1,292	2,751	1,330	1,421	652,087
Allegany	271	435	149	286	135,851
Broome	2,163	3,591	1,317	2,274	1,078,882
Cattaraugus	325	409	92	317	138,930
Cayuga	440	638	184	454	237,952
Chautauqua	1,472	2,856	1,212	1,644	686,814
Chemung	404	555	179	376	228,888
Chenango	236	330	86	244	103,337
Clinton	411	544	129	415	253,304
Columbia	294	430	114	316	160,657
Cortland	418	552	118	434	237,952
Delaware	121	161	32	129	55,564
Dutchess	633	988	393	595	462,988
Erie	8,473	17,058	7,517	9,541	3,876,669
Essex	54	64	14	50	47,436
Franklin	305	468	144	324	151,069
Fulton	168	191	27	164	85,283
Genesee	136	191	54	137	86,403
Greene	255	412	144	268	137,175
Hamilton	7	7	0	7	1,877
Herkimer	257	363	101	262	136,697
Jefferson	729	974	200	774	398,956
Lewis	52	59	11	48	25,488
Livingston	487	741	210	531	244,895
Madison	197	256	67	189	108,716
Monroe	8,703	15,923	6,779	9,144	4,491,986
Montgomery	189	388	174	214	101,446
Nassau	4,856	7,619	2,493	5,126	3,646,080
Niagara	1,851	3,110	1,151	1,959	835,513
Oneida	2,602	5,513	2,482	3,031	1,357,992
Onondaga	4,075	8,131	3,648	4,483	1,962,734
Ontario	491	661	155	506	295,441
Orange	1,616	3,137	1,402	1,735	1,182,639
Orleans	424	655	218	437	219,180
Oswego	889	1,562	574	988	445,224
Otsego	98	111	14	97	61,185
Putnam	83	91	9	82	92,751
Rensselaer	718	1,794	961	833	449,912
Rockland	853	1,449	520	929	482,969
St. Lawrence	780	1,353	461	892	379,695
Saratoga	190	210	40	170	132,443
Schenectady	884	1,869	918	951	568,686
Schoharie	102	133	29	104	62,676
Schuyler	143	212	57	155	81,114
Seneca	153	247	89	158	87,954
Steuben	589	935	325	610	292,493
Suffolk	6,780	10,046	2,903	7,143	5,942,517
Sullivan	277	506	232	274	185,218
Tioga	139	167	36	131	75,873
Tompkins	488	724	211	513	253,490
Ulster	1,269	1,952	583	1,369	883,550
Warren	88	103	17	86	54,076
Washington	169	208	44	164	105,184
Wayne	313	375	66	309	167,005
Westchester	3,876	6,639	2,611	4,028	3,751,884
Wyoming	78	95	16	79	40,828
Yates	76	104	25	79	58,730

Table 11
SAFETY NET ASSISTANCE-FNP BY MAINTENANCE OF EFFORT STATUS
 Maintenance of Effort (MOE) vs. Non-Maintenance of Effort (Non-MOE)
 Cases, Recipients, Children, Adults and Expenditures by Local District
 January 2015

Local District	Maintenance of Effort (MOE)					Non-Maintenance of Effort (Non-MOE)*				
	Cases	Recipients	Children	Adults	Expenditures	Cases	Recipients	Children	Adults	Expenditures
New York State	36,681	120,097	81,110	38,987	\$25,780,665	151,882	198,112	30,942	167,170	\$90,740,603
New York City	25,180	79,585	52,539	27,046	16,464,322	99,941	127,578	16,446	111,132	61,574,608
Rest of State	11,501	40,512	28,571	11,941	9,316,343	51,941	70,534	14,496	56,038	29,165,995
Albany	327	1,193	857	336	217,880	965	1,558	473	1,085	434,207
Allegany	38	119	80	39	21,647	233	316	69	247	114,204
Broome	361	1,266	879	387	215,657	1,802	2,325	438	1,887	863,225
Cattaraugus	22	74	52	22	11,815	303	335	40	295	127,115
Cayuga	39	149	104	45	27,557	401	489	80	409	210,395
Chautauqua	357	1,177	787	390	225,881	1,115	1,679	425	1,254	460,933
Chemung	32	136	102	34	19,359	372	419	77	342	209,529
Chenango	12	42	29	13	6,081	224	288	57	231	97,256
Clinton	42	129	85	44	25,160	369	415	44	371	228,144
Columbia	28	95	65	30	14,206	266	335	49	286	146,451
Cortland	36	116	77	39	26,078	382	436	41	395	211,874
Delaware	3	11	8	3	1,224	118	150	24	126	54,340
Dutchess	101	352	251	101	81,427	532	636	142	494	381,561
Erie	1,732	6,312	4,530	1,782	1,063,937	6,741	10,746	2,987	7,759	2,812,732
Essex	3	8	6	2	1,006	51	56	8	48	46,430
Franklin	40	125	86	39	23,536	265	343	58	285	127,533
Fulton	3	7	4	3	1,412	165	184	23	161	83,871
Genesee	14	52	37	15	7,781	122	139	17	122	78,622
Greene	38	128	91	37	22,650	217	284	53	231	114,525
Hamilton	0	0	0	0	0	7	7	0	7	1,877
Herkimer	22	76	56	20	15,727	235	287	45	242	120,970
Jefferson	41	134	90	44	24,126	688	840	110	730	374,830
Lewis	2	6	4	2	1,262	50	53	7	46	24,226
Livingston	49	163	107	56	33,048	438	578	103	475	211,847
Madison	23	69	48	21	16,869	174	187	19	168	91,847
Monroe	2,239	7,817	5,491	2,326	1,561,126	6,464	8,106	1,288	6,818	2,930,860
Montgomery	42	150	108	42	22,873	147	238	66	172	78,573
Nassau	852	2,764	1,894	870	986,347	4,004	4,855	599	4,256	2,659,733
Niagara	319	1,138	806	332	191,402	1,532	1,972	345	1,627	644,111
Oneida	446	1,760	1,292	468	324,008	2,156	3,753	1,190	2,563	1,033,984
Onondaga	737	2,810	2,049	761	493,474	3,338	5,321	1,599	3,722	1,469,260
Ontario	38	129	88	41	24,475	453	532	67	465	270,966
Orange	417	1,489	1,057	432	370,887	1,199	1,648	345	1,303	811,752
Orleans	54	186	126	60	41,998	370	469	92	377	177,182
Oswego	106	396	276	120	72,975	783	1,166	298	868	372,249
Otsego	1	2	1	1	402	97	109	13	96	60,783
Putnam	3	9	6	3	4,492	80	82	3	79	88,259
Rensselaer	239	860	614	246	147,145	479	934	347	587	302,767
Rockland	78	263	187	76	47,448	775	1,186	333	853	435,521
St. Lawrence	85	289	198	91	51,906	695	1,064	263	801	327,789
Saratoga	1	3	2	1	0	189	207	38	169	132,443
Schenectady	234	903	663	240	197,328	650	966	255	711	371,358
Schoharie	4	15	11	4	970	98	118	18	100	61,706
Schuyler	11	36	23	13	5,437	132	176	34	142	75,677
Seneca	17	63	44	19	10,095	136	184	45	139	77,859
Steuben	78	267	184	83	47,613	511	668	141	527	244,880
Suffolk	806	2,946	2,091	855	1,197,353	5,974	7,100	812	6,288	4,745,164
Sullivan	55	192	137	55	39,419	222	314	95	219	145,799
Tioga	6	23	19	4	3,310	133	144	17	127	72,563
Tompkins	50	176	122	54	29,285	438	548	89	459	224,205
Ulster	151	478	333	145	139,046	1,118	1,474	250	1,224	744,504
Warren	2	5	4	1	1,206	86	98	13	85	52,870
Washington	5	16	11	5	2,747	164	192	33	159	102,437
Wayne	18	53	35	18	13,128	295	322	31	291	153,877
Westchester	1,039	3,318	2,251	1,067	1,180,404	2,837	3,321	360	2,961	2,571,480
Wyoming	2	12	9	3	1,592	76	83	7	76	39,236
Yates	1	5	4	1	1,126	75	99	21	78	57,604

* The Non-MOE category includes otherwise Temporary Assistance for Needy Families eligible or otherwise Safety Net Assistance MOE eligible non-disabled two-parent cases.

Table 12
SAFETY NET ASSISTANCE-FNP-CASH TOTAL*
Cases, Recipients, Children, Adults and Expenditures by Local District
January 2015

Local District	Safety Net Assistance-FNP Cash Total				
	Cases	Recipients	Children	Adults	Expenditures
New York State	See Note	See Note	See Note	See Note	See Note
New York City	See Note	See Note	See Note	See Note	See Note
Rest of State	36,826	53,602	13,321	40,281	\$20,381,033
Albany	680	1,185	407	778	352,090
Allegany	157	238	63	175	70,798
Broome	1,170	1,530	282	1,248	532,115
Cattaraugus	240	294	53	241	102,290
Cayuga	318	402	78	324	157,838
Chautauqua	764	1,203	332	871	303,372
Chemung	310	368	90	278	169,650
Chenango	189	251	56	195	77,815
Clinton	305	380	69	311	189,762
Columbia	194	255	41	214	93,570
Cortland	238	277	32	245	120,099
Delaware	102	138	28	110	45,372
Dutchess	388	548	188	360	245,252
Erie	5,012	8,676	2,766	5,910	2,138,116
Essex	43	48	8	40	37,150
Franklin	200	263	47	216	95,852
Fulton	133	150	20	130	61,034
Genesee	77	89	11	78	35,298
Greene	162	217	42	175	80,222
Hamilton	7	7	0	7	1,877
Herkimer	157	208	44	164	76,979
Jefferson	494	637	100	537	257,708
Lewis	36	39	3	36	13,788
Livingston	375	510	101	409	180,410
Madison	131	160	35	125	67,576
Monroe	4,138	5,943	1,499	4,444	1,904,721
Montgomery	105	185	57	128	51,530
Nassau	2,733	3,391	467	2,924	1,889,538
Niagara	1,011	1,327	252	1,075	408,738
Oneida	1,716	3,180	1,103	2,077	814,983
Onondaga	2,970	5,021	1,711	3,310	1,319,293
Ontario	331	399	54	345	182,853
Orange	804	1,131	260	871	533,191
Orleans	248	347	95	252	123,935
Oswego	631	991	282	709	288,075
Otsego	75	85	10	75	44,716
Putnam	46	50	7	43	54,398
Rensselaer	374	729	270	459	217,108
Rockland	404	597	149	448	210,164
St. Lawrence	496	795	215	580	220,051
Saratoga	139	159	39	120	69,487
Schenectady	442	659	182	477	232,781
Schoharie	76	96	18	78	44,608
Schuyler	102	141	31	110	54,748
Seneca	97	157	54	103	52,247
Steuben	393	524	116	408	189,611
Suffolk	4,394	5,527	862	4,665	3,553,803
Sullivan	146	227	87	140	93,180
Tioga	103	115	17	98	44,296
Tompkins	286	369	71	298	144,369
Ulster	776	1,070	206	864	526,726
Warren	69	80	12	68	43,237
Washington	123	148	32	116	67,999
Wayne	201	230	24	206	91,577
Westchester	1,400	1,712	217	1,495	1,331,282
Wyoming	57	68	10	58	28,618
Yates	58	76	16	60	43,137

Note: A breakout of Safety Net Assistance-FNP-Cash and Safety Net Assistance-FNP-Non-Cash data is not available for New York City.

* May include otherwise Temporary Assistance for Needy Families eligible or otherwise Safety Net Assistance MOE eligible non-disabled two-parent cases.

Table 13
SAFETY NET ASSISTANCE-FNP-CASH BY MAINTENANCE OF EFFORT STATUS
Maintenance of Effort (MOE) vs. Non-Maintenance of Effort (Non-MOE)
Cases, Recipients, Children, Adults and Expenditures by Local District
January 2015

Local District	Maintenance of Effort (MOE)					Non-Maintenance of Effort (Non-MOE)*				
	Cases	Recipients	Children	Adults	Expenditures	Cases	Recipients	Children	Adults	Expenditures
New York State	See Note	See Note	See Note	See Note	See Note	See Note	See Note	See Note	See Note	See Note
New York City	See Note	See Note	See Note	See Note	See Note	See Note	See Note	See Note	See Note	See Note
Rest of State	1,249	4,212	2,847	1,365	\$1,007,004	35,577	49,390	10,474	38,916	\$19,374,029
Albany	20	64	44	20	15,608	660	1,121	363	758	336,482
Allegany	1	4	2	2	766	156	234	61	173	70,032
Broome	21	61	38	23	16,735	1,149	1,469	244	1,225	515,380
Cattaraugus	13	38	25	13	6,824	227	256	28	228	95,466
Cayuga	5	16	11	5	3,073	313	386	67	319	154,765
Chautauqua	25	80	47	33	12,043	739	1,123	285	838	291,329
Chemung	6	34	27	7	3,215	304	334	63	271	166,435
Chenango	2	5	3	2	1,095	187	246	53	193	76,720
Clinton	17	49	29	20	10,129	288	331	40	291	179,633
Columbia	2	4	2	2	1,208	192	251	39	212	92,362
Cortland	3	9	6	3	2,241	235	268	26	242	117,858
Delaware	1	5	4	1	964	101	133	24	109	44,408
Dutchess	41	139	97	42	34,386	347	409	91	318	210,866
Erie	192	648	439	209	123,112	4,820	8,028	2,327	5,701	2,015,004
Essex	0	0	0	0	0	43	48	8	40	37,150
Franklin	2	6	4	2	1,358	198	257	43	214	94,494
Fulton	1	2	1	1	75	132	148	19	129	60,959
Genesee	0	0	0	0	0	77	89	11	78	35,298
Greene	3	13	9	4	2,566	159	204	33	171	77,656
Hamilton	0	0	0	0	0	7	7	0	7	1,877
Herkimer	3	12	9	3	3,638	154	196	35	161	73,341
Jefferson	9	26	15	11	5,014	485	611	85	526	252,694
Lewis	0	0	0	0	0	36	39	3	36	13,788
Livingston	9	31	20	11	6,294	366	479	81	398	174,116
Madison	10	30	20	10	7,028	121	130	15	115	60,548
Monroe	229	780	536	244	155,535	3,909	5,163	963	4,200	1,749,186
Montgomery	4	14	9	5	1,788	101	171	48	123	49,742
Nassau	40	110	68	42	56,377	2,693	3,281	399	2,882	1,833,161
Niagara	31	97	64	33	20,896	980	1,230	188	1,042	387,842
Oneida	58	238	172	66	45,707	1,658	2,942	931	2,011	769,276
Onondaga	180	678	482	196	133,863	2,790	4,343	1,229	3,114	1,185,430
Ontario	2	6	4	2	1,190	329	393	50	343	181,663
Orange	38	115	73	42	30,752	766	1,016	187	829	502,439
Orleans	9	30	19	11	5,232	239	317	76	241	118,703
Oswego	21	59	33	26	11,852	610	932	249	683	276,223
Otsego	0	0	0	0	0	75	85	10	75	44,716
Putnam	2	6	4	2	1,397	44	44	3	41	53,001
Rensselaer	2	10	8	2	1,973	372	719	262	457	215,135
Rockland	10	24	14	10	3,568	394	573	135	438	206,596
St. Lawrence	12	44	31	13	7,047	484	751	184	567	213,004
Saratoga	1	3	2	1	0	138	156	37	119	69,487
Schenectady	9	31	21	10	6,703	433	628	161	467	226,078
Schoharie	0	0	0	0	0	76	96	18	78	44,608
Schuyler	4	13	8	5	2,184	98	128	23	105	52,564
Seneca	4	17	12	5	3,207	93	140	42	98	49,040
Steuben	5	20	15	5	4,324	388	504	101	403	185,287
Suffolk	136	468	314	154	192,312	4,258	5,059	548	4,511	3,361,491
Sullivan	4	15	10	5	2,985	142	212	77	135	90,195
Tioga	1	2	1	1	524	102	113	16	97	43,772
Tompkins	1	3	2	1	663	285	366	69	297	143,706
Ulster	10	22	12	10	4,660	766	1,048	194	854	522,066
Warren	0	0	0	0	0	69	80	12	68	43,237
Washington	2	8	6	2	1,210	121	140	26	114	66,789
Wayne	6	14	8	6	2,811	195	216	16	200	88,766
Westchester	41	103	62	41	50,478	1,359	1,609	155	1,454	1,280,804
Wyoming	1	6	5	1	394	56	62	5	57	28,224
Yates	0	0	0	0	0	58	76	16	60	43,137

Note: A breakout of Safety Net Assistance-FNP-Cash and Safety Net Assistance-FNP-Non-Cash data is not available for New York City.

* The Non-MOE category includes otherwise Temporary Assistance for Needy Families eligible or otherwise Safety Net Assistance MOE eligible non-disabled two-parent cases.

Table 14
SAFETY NET ASSISTANCE-FNP-NON-CASH TOTAL*
Cases, Recipients, Children, Adults and Expenditures by Local District
January 2015

Local District	Safety Net Assistance-FNP-Non-Cash Total				
	Cases	Recipients	Children	Adults	Expenditures
New York State	See Note	See Note	See Note	See Note	See Note
New York City	See Note	See Note	See Note	See Note	See Note
Rest of State	26,616	57,444	29,746	27,698	\$18,101,305
Albany	612	1,566	923	643	299,997
Allegany	114	197	86	111	65,053
Broome	993	2,061	1,035	1,026	546,767
Cattaraugus	85	115	39	76	36,640
Cayuga	122	236	106	130	80,114
Chautauqua	708	1,653	880	773	383,442
Chemung	94	187	89	98	59,238
Chenango	47	79	30	49	25,522
Clinton	106	164	60	104	63,542
Columbia	100	175	73	102	67,087
Cortland	180	275	86	189	117,853
Delaware	19	23	4	19	10,192
Dutchess	245	440	205	235	217,736
Erie	3,461	8,382	4,751	3,631	1,738,553
Essex	11	16	6	10	10,286
Franklin	105	205	97	108	55,217
Fulton	35	41	7	34	24,249
Genesee	59	102	43	59	51,105
Greene	93	195	102	93	56,953
Hamilton	0	0	0	0	0
Herkimer	100	155	57	98	59,718
Jefferson	235	337	100	237	141,248
Lewis	16	20	8	12	11,700
Livingston	112	231	109	122	64,485
Madison	66	96	32	64	41,140
Monroe	4,565	9,980	5,280	4,700	2,587,265
Montgomery	84	203	117	86	49,916
Nassau	2,123	4,228	2,026	2,202	1,756,542
Niagara	840	1,783	899	884	426,775
Oneida	886	2,333	1,379	954	543,009
Onondaga	1,105	3,110	1,937	1,173	643,441
Ontario	160	262	101	161	112,588
Orange	812	2,006	1,142	864	649,448
Orleans	176	308	123	185	95,245
Oswego	258	571	292	279	157,149
Otsego	23	26	4	22	16,469
Putnam	37	41	2	39	38,353
Rensselaer	344	1,065	691	374	232,804
Rockland	449	852	371	481	272,805
St. Lawrence	284	558	246	312	159,644
Saratoga	51	51	1	50	62,956
Schenectady	442	1,210	736	474	335,905
Schoharie	26	37	11	26	18,068
Schuyler	41	71	26	45	26,366
Seneca	56	90	35	55	35,707
Steuben	196	411	209	202	102,882
Suffolk	2,386	4,519	2,041	2,478	2,388,714
Sullivan	131	279	145	134	92,038
Tioga	36	52	19	33	31,577
Tompkins	202	355	140	215	109,121
Ulster	493	882	377	505	356,824
Warren	19	23	5	18	10,839
Washington	46	60	12	48	37,185
Wayne	112	145	42	103	75,428
Westchester	2,476	4,927	2,394	2,533	2,420,602
Wyoming	21	27	6	21	12,210
Yates	18	28	9	19	15,593

Note: A breakout of Safety Net Assistance-FNP-Cash and Safety Net Assistance-FNP-Non-Cash data is not available for New York City.

* May include otherwise Temporary Assistance for Needy Families eligible or otherwise Safety Net Assistance MOE eligible non-disabled two-parent cases.

Table 15
SAFETY NET ASSISTANCE-FNP-NON-CASH BY MAINTENANCE OF EFFORT STATUS
 Maintenance of Effort (MOE) vs. Non-Maintenance of Effort (Non-MOE)
 Cases, Recipients, Children, Adults and Expenditures by Local District
 January 2015

Local District	Maintenance of Effort (MOE)					Non-Maintenance of Effort (Non-MOE)*				
	Cases	Recipients	Children	Adults	Expenditures	Cases	Recipients	Children	Adults	Expenditures
New York State	See Note	See Note	See Note	See Note	See Note	See Note	See Note	See Note	See Note	See Note
New York City	See Note	See Note	See Note	See Note	See Note	See Note	See Note	See Note	See Note	See Note
Rest of State	10,252	36,300	25,724	10,576	\$8,309,339	16,364	21,144	4,022	17,122	\$9,791,966
Albany	307	1,129	813	316	202,272	305	437	110	327	97,725
Allegany	37	115	78	37	20,881	77	82	8	74	44,172
Broome	340	1,205	841	364	198,922	653	856	194	662	347,845
Cattaraugus	9	36	27	9	4,991	76	79	12	67	31,649
Cayuga	34	133	93	40	24,484	88	103	13	90	55,630
Chautauqua	332	1,097	740	357	213,838	376	556	140	416	169,604
Chemung	26	102	75	27	16,144	68	85	14	71	43,094
Chenango	10	37	26	11	4,986	37	42	4	38	20,536
Clinton	25	80	56	24	15,031	81	84	4	80	48,511
Columbia	26	91	63	28	12,998	74	84	10	74	54,089
Cortland	33	107	71	36	23,837	147	168	15	153	94,016
Delaware	2	6	4	2	260	17	17	0	17	9,932
Dutchess	60	213	154	59	47,041	185	227	51	176	170,695
Erie	1,540	5,664	4,091	1,573	940,825	1,921	2,718	660	2,058	797,728
Essex	3	8	6	2	1,006	8	8	0	8	9,280
Franklin	38	119	82	37	22,178	67	86	15	71	33,039
Fulton	2	5	3	2	1,337	33	36	4	32	22,912
Genesee	14	52	37	15	7,781	45	50	6	44	43,324
Greene	35	115	82	33	20,084	58	80	20	60	36,869
Hamilton	0	0	0	0	0	0	0	0	0	0
Herkimer	19	64	47	17	12,089	81	91	10	81	47,629
Jefferson	32	108	75	33	19,112	203	229	25	204	122,136
Lewis	2	6	4	2	1,262	14	14	4	10	10,438
Livingston	40	132	87	45	26,754	72	99	22	77	37,731
Madison	13	39	28	11	9,841	53	57	4	53	31,299
Monroe	2,010	7,037	4,955	2,082	1,405,591	2,555	2,943	325	2,618	1,181,674
Montgomery	38	136	99	37	21,085	46	67	18	49	28,831
Nassau	812	2,654	1,826	828	929,970	1,311	1,574	200	1,374	826,572
Niagara	288	1,041	742	299	170,506	552	742	157	585	256,269
Oneida	388	1,522	1,120	402	278,301	498	811	259	552	264,708
Onondaga	557	2,132	1,567	565	359,611	548	978	370	608	283,830
Ontario	36	123	84	39	23,285	124	139	17	122	89,303
Orange	379	1,374	984	390	340,135	433	632	158	474	309,313
Orleans	45	156	107	49	36,766	131	152	16	136	58,479
Oswego	85	337	243	94	61,123	173	234	49	185	96,026
Otsego	1	2	1	1	402	22	24	3	21	16,067
Putnam	1	3	2	1	3,095	36	38	0	38	35,258
Rensselaer	237	850	606	244	145,172	107	215	85	130	87,632
Rockland	68	239	173	66	43,880	381	613	198	415	228,925
St. Lawrence	73	245	167	78	44,859	211	313	79	234	114,785
Saratoga	0	0	0	0	0	51	51	1	50	62,956
Schenectady	225	872	642	230	190,625	217	338	94	244	145,280
Schoharie	4	15	11	4	970	22	22	0	22	17,098
Schuyler	7	23	15	8	3,253	34	48	11	37	23,113
Seneca	13	46	32	14	6,888	43	44	3	41	28,819
Steuben	73	247	169	78	43,289	123	164	40	124	59,593
Suffolk	670	2,478	1,777	701	1,005,041	1,716	2,041	264	1,777	1,383,673
Sullivan	51	177	127	50	36,434	80	102	18	84	55,604
Tioga	5	21	18	3	2,786	31	31	1	30	28,791
Tompkins	49	173	120	53	28,622	153	182	20	162	80,499
Ulster	141	456	321	135	134,386	352	426	56	370	222,438
Warren	2	5	4	1	1,206	17	18	1	17	9,633
Washington	3	8	5	3	1,537	43	52	7	45	35,648
Wayne	12	39	27	12	10,317	100	106	15	91	65,111
Westchester	998	3,215	2,189	1,026	1,129,926	1,478	1,712	205	1,507	1,290,676
Wyoming	1	6	4	2	1,198	20	21	2	19	11,012
Yates	1	5	4	1	1,126	17	23	5	18	14,467

Note: A breakout of Safety Net Assistance-FNP-Cash and Safety Net Assistance-FNP-Non-Cash data is not available for New York City.

* The Non-MOE category includes otherwise Temporary Assistance for Needy Families eligible or otherwise Safety Net Assistance MOE eligible non-disabled two-parent cases.

Table 16
SUPPLEMENTAL NUTRITION ASSISTANCE PROGRAM
Households, Persons and Value of Supplemental Nutrition Assistance Program Benefits by Local District
January 2015

Local District	Total			Temporary Assistance			Non-Temporary Assistance		
	Households	Persons	SNAP Benefits	Households	Persons	SNAP Benefits	Households	Persons	SNAP Benefits
New York State	1,673,567	3,055,942	\$424,847,862	679,072	1,030,923	\$156,319,408	994,495	2,025,019	\$268,528,454
New York City	963,436	1,722,856	250,356,331	440,295	668,163	102,431,172	523,141	1,054,693	147,925,159
Rest of State	710,131	1,333,086	174,491,531	238,777	362,760	53,888,236	471,354	970,326	120,603,295
Albany	19,699	36,833	4,786,479	6,432	9,913	1,477,893	13,267	26,920	3,308,586
Allegany	3,424	6,542	769,936	1,241	1,786	263,387	2,183	4,756	506,549
Broome	17,044	31,494	4,088,536	6,867	10,701	1,632,718	10,177	20,793	2,455,818
Cattaraugus	6,558	12,842	1,554,536	1,844	2,376	367,071	4,714	10,466	1,187,465
Cayuga	5,669	10,941	1,377,710	1,557	2,337	351,713	4,112	8,604	1,025,997
Chautauqua	14,351	27,653	3,589,466	4,639	7,794	1,142,419	9,712	19,859	2,447,047
Chemung	8,105	15,653	2,028,648	2,324	3,043	458,164	5,781	12,610	1,570,484
Chenango	4,074	8,010	970,040	1,195	1,591	240,200	2,879	6,419	729,840
Clinton	6,968	11,989	1,494,961	2,447	3,146	476,876	4,521	8,843	1,018,085
Columbia	3,801	6,613	839,134	1,377	1,905	284,670	2,424	4,708	554,464
Cortland	3,868	7,090	873,326	1,202	1,695	259,215	2,666	5,395	614,111
Delaware	3,353	6,730	814,703	906	1,151	169,021	2,447	5,579	645,682
Dutchess	13,451	24,128	3,197,186	3,861	4,997	755,259	9,590	19,131	2,441,927
Erie	85,107	158,732	20,942,182	29,751	48,952	7,320,611	55,356	109,780	13,621,571
Essex	2,146	3,841	475,424	745	864	133,716	1,401	2,977	341,708
Franklin	4,173	7,625	995,537	1,562	2,094	321,516	2,611	5,531	674,021
Fulton	5,105	9,535	1,191,732	1,465	1,737	282,051	3,640	7,798	909,681
Genesee	3,341	6,196	749,856	948	1,279	196,601	2,393	4,917	553,255
Greene	3,345	5,892	766,965	1,136	1,598	236,986	2,209	4,294	529,979
Hamilton	265	470	58,930	59	63	10,980	206	407	47,950
Herkimer	5,567	10,599	1,311,964	1,360	1,825	286,629	4,207	8,774	1,025,335
Jefferson	8,284	15,650	2,012,591	2,487	3,408	522,019	5,797	12,242	1,490,572
Lewis	1,876	3,733	421,055	449	563	82,997	1,427	3,170	338,058
Livingston	4,021	7,512	963,647	1,436	2,297	350,562	2,585	5,215	613,085
Madison	4,635	9,207	1,165,257	1,074	1,443	218,784	3,561	7,764	946,473
Monroe	66,477	122,439	16,550,960	28,176	46,648	6,908,600	38,301	75,791	9,642,360
Montgomery	4,740	9,829	1,229,630	1,483	2,331	336,085	3,257	7,498	893,545
Nassau	41,522	66,923	8,874,000	17,086	23,728	3,572,069	24,436	43,195	5,301,931
Niagara	18,361	33,137	4,298,453	6,134	9,384	1,409,845	12,227	23,753	2,888,608
Oneida	20,590	41,719	5,312,058	8,209	14,823	2,118,248	12,381	26,896	3,193,810
Onondaga	38,795	74,559	9,638,569	13,423	23,143	3,319,192	25,372	51,416	6,319,377
Ontario	5,808	10,573	1,330,415	1,766	2,445	381,798	4,042	8,128	948,617
Orange	20,195	47,293	6,175,067	6,255	9,627	1,393,887	13,940	37,666	4,781,180
Orleans	3,267	6,315	769,066	1,108	1,696	256,208	2,159	4,619	512,858
Oswego	9,627	20,027	2,507,199	3,100	5,277	776,755	6,527	14,750	1,730,444
Otsego	3,378	6,355	775,307	921	1,038	167,008	2,457	5,317	608,299
Putnam	1,771	2,785	366,488	563	627	94,834	1,208	2,158	271,654
Rensselaer	9,374	18,860	2,334,341	3,528	6,312	864,955	5,846	12,548	1,469,386
Rockland	17,214	47,434	6,216,451	4,190	5,785	881,144	13,024	41,649	5,335,307
St. Lawrence	8,683	17,129	2,097,606	3,139	4,572	676,876	5,544	12,557	1,420,730
Saratoga	9,036	16,014	1,994,886	1,966	2,224	354,240	7,070	13,790	1,640,646
Schenectady	13,362	25,199	3,377,472	4,690	7,238	1,075,028	8,672	17,961	2,302,444
Schoharie	2,038	3,790	477,661	544	687	108,872	1,494	3,103	368,789
Schuyler	1,308	2,572	303,793	371	581	88,294	937	1,991	215,499
Seneca	1,895	3,637	463,753	614	881	129,088	1,281	2,756	334,665
Steuben	6,222	12,495	1,471,610	2,052	2,989	439,245	4,170	9,506	1,032,365
Suffolk	76,222	130,930	18,125,694	22,150	31,194	4,643,238	54,072	99,736	13,482,456
Sullivan	6,005	11,838	1,614,806	1,880	2,555	386,119	4,125	9,283	1,228,687
Tioga	3,236	6,616	782,726	802	1,101	160,293	2,434	5,515	622,433
Tompkins	5,246	9,182	1,189,127	1,605	2,230	348,131	3,641	6,952	840,996
Ulster	12,154	21,515	2,874,177	4,398	6,447	985,792	7,756	15,068	1,888,385
Warren	4,186	7,622	940,922	1,124	1,339	211,975	3,062	6,283	728,947
Washington	4,101	7,891	963,539	1,071	1,364	208,749	3,030	6,527	754,790
Wayne	5,713	10,722	1,315,600	1,732	2,207	347,706	3,981	8,515	967,894
Westchester	48,094	85,842	11,946,059	15,449	22,589	3,226,236	32,645	63,253	8,719,823
Wyoming	1,814	3,489	399,974	493	626	95,840	1,321	2,863	304,134
Yates	1,467	2,845	334,321	391	514	79,828	1,076	2,331	254,493

Note: Supplemental Nutrition Assistance Program households containing only Supplemental Security Income recipients or a mix of Temporary Assistance and Supplemental Security Income recipients are counted as Temporary Assistance.

Table 17
SUPPLEMENTAL SECURITY INCOME
 Recipients, Total Program Expenditures and Federal and State Shares, by Local District
 January 2015

Local District	Recipients	Expenditures		
		Total	Federal	State
New York State*	719,686	\$416,670,229	\$363,556,726	\$53,113,503
New York City	433,950	255,346,712	224,823,650	30,523,062
Rest of State	280,679	159,113,038	137,219,557	21,893,481
Albany	7,652	4,315,064	3,779,170	535,894
Allegany	1,619	906,235	787,443	118,792
Broome	7,435	4,322,101	3,854,034	468,067
Cattaraugus	2,699	1,462,580	1,270,060	192,520
Cayuga	1,996	1,099,602	930,164	169,438
Chautauqua	5,226	2,948,215	2,571,458	376,757
Chemung	3,675	1,991,389	1,734,377	257,012
Chenango	1,679	934,363	827,278	107,085
Clinton	3,198	1,750,767	1,518,918	231,849
Columbia	1,739	1,022,047	831,006	191,041
Cortland	1,329	727,032	626,551	100,481
Delaware	1,340	730,049	623,749	106,300
Dutchess	6,140	3,617,414	2,957,195	660,219
Erie	31,008	18,197,917	15,963,010	2,234,907
Essex	1,132	675,854	543,908	131,946
Franklin	1,861	1,065,645	907,095	158,550
Fulton	2,302	1,269,902	1,062,534	207,368
Genesee	1,328	767,371	645,631	121,740
Greene	1,547	867,654	756,781	110,873
Hamilton	58	43,557	39,738	3,819
Herkimer	1,832	997,797	862,215	135,582
Jefferson	3,071	1,662,909	1,422,465	240,444
Lewis	659	342,401	299,110	43,291
Livingston	1,333	775,313	695,885	79,428
Madison	1,502	844,841	737,946	106,895
Monroe	27,915	16,755,807	14,785,239	1,970,568
Montgomery	2,063	1,179,797	1,025,589	154,208
Nassau	19,268	10,449,314	8,868,724	1,580,590
Niagara	6,494	3,701,155	3,207,487	493,668
Oneida	8,977	5,157,405	4,543,211	614,194
Onondaga	15,643	9,236,746	8,232,880	1,003,866
Ontario	2,067	1,107,422	965,927	141,495
Orange	7,592	4,338,403	3,740,165	598,238
Orleans	1,063	580,578	508,583	71,995
Oswego	3,632	2,104,341	1,908,240	196,101
Otsego	1,525	871,855	728,493	143,362
Putnam	943	494,780	403,051	91,729
Rensselaer	4,869	2,812,969	2,408,695	404,274
Rockland	5,741	3,190,106	2,420,432	769,674
St. Lawrence	4,085	2,255,946	1,985,629	270,317
Saratoga	3,270	1,777,629	1,544,626	233,003
Schenectady	6,008	3,475,848	3,062,836	413,012
Schoharie	795	428,196	351,348	76,848
Schuyler	485	265,715	216,873	48,842
Seneca	842	458,480	395,633	62,847
Steuben	3,281	1,797,331	1,588,189	209,142
Suffolk	23,662	13,112,832	10,907,762	2,205,070
Sullivan	2,913	1,591,395	1,282,227	309,168
Tioga	1,302	705,672	623,244	82,428
Tompkins	1,758	960,151	814,689	145,462
Ulster	4,611	2,518,854	2,124,233	394,621
Warren	1,786	953,934	821,498	132,436
Washington	1,739	962,810	835,516	127,294
Wayne	2,358	1,303,810	1,155,362	148,448
Westchester	19,340	10,531,699	8,916,364	1,615,335
Wyoming	722	382,768	335,610	47,158
Yates	570	311,271	263,481	47,790
Mental Hygiene	5,057	2,210,479	1,513,519	696,960

* Only New York State includes Mental Hygiene

Table 18
SUPPLEMENTAL SECURITY INCOME
 Recipients by Living Arrangement and Location
 January 2015

Living Arrangement	New York State	New York City	Rest of State	Mental Hygiene
Living Alone	354,155	231,557	122,597	1
Living With Others	276,370	159,196	117,167	7
Living in Household of Another	29,138	17,477	11,660	1
Congregate Care Level 1	2,693	306	580	1,807
Congregate Care Level 2	27,048	9,878	16,289	881
Congregate Care Level 3	12,958	6,524	6,433	1
Title XIX Institution	12,958	7,813	4,422	723
Other*	4,366	1,322	1,531	1,513
Total	719,686	434,073	280,679	4,934

Table 19
SUPPLEMENTAL SECURITY INCOME
 Recipients by Living Arrangement and Category of Assistance
 January 2015

Living Arrangement	Total	Category of Assistance		
		Aged	Blind	Disabled
Living Alone	354,155	101,318	1,335	251,502
Living With Others	276,370	22,548	1,178	252,644
Living in Household of Another	29,138	8,183	198	20,757
Congregate Care Level 1	2,693	309	13	2,371
Congregate Care Level 2	27,048	1,648	94	25,306
Congregate Care Level 3	12,958	5,073	32	7,853
Title XIX Institution & Other*	17,324	2,473	100	14,751
Total	719,686	141,552	2,950	575,184

* "Other" includes recipients either a) residing in a private medical facility and Medicaid is paying for less than 50% of the cost of care, b) residing in certain publicly operated residential facilities serving 16 or fewer residents, or c) residing in a public emergency shelter for six calendar months during a nine month period. Such cases receive no state Supplemental Security Income supplement.

Table 20
CHILD SUPPORT COLLECTIONS (IV-D)
January 2015

Local District	Total	Current Assistance	Former Assistance	Never Assistance
New York State	\$145,100,955.90	\$5,274,762.97	\$70,141,320.28	\$69,684,872.61
New York City	59,165,810.62	2,454,554.06	30,050,419.63	26,660,836.93
Rest of State	85,935,145.24	2,820,208.91	40,090,900.65	43,024,035.68
Albany	2,371,438.63	63,699.29	964,304.15	1,343,435.19
Allegany	471,483.99	28,044.05	289,889.24	153,550.70
Broome	1,360,571.34	80,143.22	705,505.63	574,922.49
Cattaraugus	824,500.52	29,557.17	477,636.79	317,306.56
Cayuga	725,855.15	25,431.29	429,813.84	270,610.02
Chautauqua	1,041,465.83	66,071.82	645,697.25	329,696.76
Chemung	751,929.69	24,629.06	466,073.32	261,227.31
Chenango	413,333.25	15,240.69	236,765.44	161,327.12
Clinton	802,923.76	39,360.13	397,238.06	366,325.57
Columbia	472,121.65	17,347.44	245,449.38	209,324.83
Cortland	424,125.17	17,644.49	249,030.07	157,450.61
Delaware	356,637.87	18,072.08	220,096.82	118,468.97
Dutchess	2,385,194.60	42,658.59	859,079.30	1,483,456.71
Erie	6,155,476.33	277,937.93	3,368,400.51	2,509,137.89
Essex	280,105.85	10,625.77	140,440.61	129,039.47
Franklin	439,311.82	12,527.01	215,816.64	210,968.17
Fulton	536,005.37	15,319.19	351,670.53	169,015.65
Genesee	501,072.72	17,291.97	258,722.41	225,058.34
Greene	389,852.46	11,428.09	185,497.92	192,926.45
Hamilton	21,796.25	125.00	13,475.65	8,195.60
Herkimer	450,836.36	14,614.96	251,852.26	184,369.14
Jefferson	1,251,262.25	37,569.74	510,111.95	703,580.56
Lewis	339,310.59	8,349.48	216,649.37	114,311.74
Livingston	550,848.58	27,574.55	306,920.15	216,353.88
Madison	493,794.50	16,350.86	273,931.32	203,512.32
Monroe	5,527,510.93	243,972.18	2,904,962.15	2,378,576.60
Montgomery	483,094.46	27,268.93	308,000.63	147,824.90
Nassau	7,860,867.15	140,403.42	2,911,536.95	4,808,926.78
Niagara	1,600,811.44	91,316.49	974,810.97	534,683.98
Oneida	1,421,943.37	79,660.52	818,377.02	523,905.83
Onondaga	3,707,219.20	129,084.85	2,035,862.32	1,542,272.03
Ontario	994,529.30	35,561.49	516,054.53	442,913.28
Orange	3,270,402.63	93,146.33	1,227,105.79	1,950,150.51
Orleans	356,867.93	16,244.65	213,530.56	127,092.72
Oswego	1,122,263.53	49,855.81	661,957.09	410,450.63
Otsego	395,214.40	7,210.04	190,452.53	197,551.83
Putnam	718,034.87	5,578.25	209,263.69	503,192.93
Rensselaer	1,676,997.25	95,360.14	651,503.55	930,133.56
Rockland	2,341,503.50	47,003.15	821,170.03	1,473,330.32
St. Lawrence	967,932.97	34,873.08	615,148.48	317,911.41
Saratoga	1,755,640.13	17,693.97	729,515.55	1,008,430.61
Schenectady	1,352,486.34	36,050.91	556,426.91	760,008.52
Schoharie	311,943.23	11,137.33	168,825.32	131,980.58
Schuyler	166,808.81	9,735.15	113,159.47	43,914.19
Seneca	289,549.19	13,032.33	147,526.01	128,990.85
Steuben	857,268.99	29,816.24	514,493.37	312,959.38
Suffolk	12,559,206.52	307,071.92	5,447,401.50	6,804,733.10
Sullivan	693,129.34	18,721.91	339,906.27	334,501.16
Tioga	462,230.15	23,297.88	255,587.32	183,344.95
Tompkins	611,219.59	29,125.51	308,355.83	273,738.25
Ulster	1,500,021.39	70,803.32	710,221.03	718,997.04
Warren	747,220.26	18,598.21	349,242.75	379,379.30
Washington	631,824.62	18,800.11	338,275.07	274,749.44
Wayne	872,086.23	21,423.37	415,456.90	435,205.96
Westchester	6,308,285.83	161,232.65	2,084,809.10	4,062,244.08
Wyoming	402,626.10	15,062.15	176,527.26	211,036.69
Yates	157,151.06	4,452.75	95,366.09	57,332.22

Table 21
AGGREGATE CLAIMS
TOTAL TEMPORARY ASSISTANCE
Family Assistance and Safety Net Assistance
January 2015

Month	New York State			New York City			Rest of State		
	Recipients	Net Expenditures	Monthly Average Payment	Recipients	Net Expenditures	Monthly Average Payment	Recipients	Net Expenditures	Monthly Average Payment
February 2013	584,874	\$226,399,716	\$387.09	357,200	\$158,355,307	\$443.32	227,674	\$68,044,409	\$298.87
March 2013	585,762	\$218,825,901	\$373.57	357,234	\$150,189,997	\$420.42	228,528	\$68,635,904	\$300.34
April 2013	589,725	\$229,924,511	\$389.88	359,652	\$158,688,921	\$441.23	230,073	\$71,235,590	\$309.62
May 2013	587,316	\$232,005,475	\$395.03	356,604	\$159,988,278	\$448.64	230,712	\$72,017,197	\$312.15
June 2013	580,109	\$226,898,703	\$391.13	352,026	\$158,719,731	\$450.88	228,083	\$68,178,972	\$298.92
July 2013	576,355	\$211,426,179	\$366.83	347,892	\$143,454,205	\$412.35	228,463	\$67,971,974	\$297.52
August 2013	573,835	\$210,360,299	\$366.59	345,020	\$142,617,183	\$413.36	228,815	\$67,743,116	\$296.06
September 2013	569,174	\$227,485,267	\$399.68	341,812	\$160,904,569	\$470.74	227,362	\$66,580,698	\$292.84
October 2013	573,292	\$221,089,044	\$385.65	342,337	\$151,890,249	\$443.69	230,955	\$69,198,795	\$299.62
November 2013	568,983	\$218,665,959	\$384.31	340,896	\$151,876,636	\$445.52	228,087	\$66,789,323	\$292.82
December 2013	566,424	\$289,568,439	\$511.22	339,513	\$215,151,686	\$633.71	226,911	\$74,416,753	\$327.96
January 2014	560,991	\$214,027,862	\$381.52	333,708	\$146,731,005	\$439.70	227,283	\$67,296,857	\$296.09
February 2014	561,525	\$210,098,286	\$374.16	333,162	\$140,749,161	\$422.46	228,363	\$69,349,125	\$303.68
March 2014	566,456	\$228,167,551	\$402.80	334,732	\$155,317,544	\$464.01	231,724	\$72,850,007	\$314.38
April 2014	565,463	\$226,852,724	\$401.18	332,074	\$151,598,291	\$456.52	233,389	\$75,254,433	\$322.44
May 2014	564,612	\$219,689,192	\$389.10	330,872	\$144,710,332	\$437.36	233,740	\$74,978,860	\$320.78
June 2014	563,201	\$223,708,444	\$397.21	331,315	\$151,675,137	\$457.80	231,886	\$72,033,307	\$310.64
July 2014	562,676	\$213,011,067	\$378.57	331,407	\$143,826,733	\$433.99	231,269	\$69,184,334	\$299.15
August 2014	565,719	\$204,518,642	\$361.52	336,383	\$135,173,840	\$401.85	229,336	\$69,344,802	\$302.37
September 2014	567,809	\$227,602,551	\$400.84	339,380	\$158,726,208	\$467.69	228,429	\$68,876,343	\$301.52
October 2014	571,842	\$243,254,896	\$425.39	339,804	\$170,325,629	\$501.25	232,038	\$72,929,267	\$314.30
November 2014	566,688	\$206,234,990	\$363.93	341,498	\$142,024,104	\$415.89	225,190	\$64,210,886	\$285.14
December 2014	573,328	\$306,441,722	\$534.50	344,154	\$230,548,334	\$669.90	229,174	\$75,893,388	\$331.16
January 2015	569,551	\$253,906,011	\$445.80	343,400	\$186,910,253	\$544.29	226,151	\$66,995,758	\$296.24

Note: Data pursuant to a New York State Legislative mandate S. 6057-B/A. 9557-B, Chapter 57, L. 2004.

Based on local district claims submitted on claims Schedules A and C. Includes reimbursable expenditures for basic assistance, rent supplements, family shelters, domestic violence shelters, security deposits, transitional services, diversion transportation, diversion payments, and other non-assistance. These claims are net of cancellations and refunds, and include any reconciliations and supplemental claims applied to the month after initial expenditure reporting is done. Thus, these data differ from the expenditure data presented elsewhere in this document, which are derived from original payment issuance activity during the month, net of cancellations and refunds in that month.

District claiming activity for recent months is generally not complete before the statutorily required due date for this report. Thus, claims for recent months may appear substantially below those for earlier months. Claims tables in future months of this report will continue to include the historical periods above, adjusted for claiming activity occurring subsequent to this report.

Table 22
AGGREGATE CLAIMS
FEDERALLY PARTICIPATING - TANF
Family Assistance-FP and Safety Net Assistance-FP
January 2015

Month	New York State			New York City			Rest of State		
	Recipients	Net Expenditures	Monthly Average Payment	Recipients	Net Expenditures	Monthly Average Payment	Recipients	Net Expenditures	Monthly Average Payment
February 2013	261,491	\$98,041,269	\$374.93	141,314	\$64,505,287	\$456.47	120,177	\$33,535,982	\$279.05
March 2013	259,524	\$103,364,886	\$398.29	139,783	\$69,652,596	\$498.29	119,741	\$33,712,290	\$281.54
April 2013	260,660	\$101,492,686	\$389.37	140,974	\$66,368,426	\$470.78	119,686	\$35,124,260	\$293.47
May 2013	259,401	\$99,347,713	\$382.99	138,701	\$63,963,986	\$461.16	120,700	\$35,383,727	\$293.15
June 2013	266,926	\$105,715,334	\$396.05	147,058	\$71,922,193	\$489.07	119,868	\$33,793,141	\$281.92
July 2013	264,767	\$90,319,986	\$341.13	144,851	\$57,077,984	\$394.05	119,916	\$33,242,002	\$277.21
August 2013	265,230	\$89,152,840	\$336.13	144,486	\$55,672,931	\$385.32	120,744	\$33,479,909	\$277.28
September 2013	263,064	\$105,076,551	\$399.43	142,765	\$71,623,613	\$501.69	120,299	\$33,452,938	\$278.08
October 2013	265,039	\$96,154,933	\$362.80	143,191	\$61,776,738	\$431.43	121,848	\$34,378,195	\$282.14
November 2013	261,958	\$96,127,899	\$366.96	141,744	\$63,281,911	\$446.45	120,214	\$32,845,988	\$273.23
December 2013	260,468	\$133,212,419	\$511.43	141,437	\$95,757,426	\$677.03	119,031	\$37,454,993	\$314.67
January 2014	256,124	\$92,822,352	\$362.41	137,459	\$59,856,956	\$435.45	118,665	\$32,965,396	\$277.80
February 2014	255,541	\$89,422,412	\$349.93	136,833	\$56,115,950	\$410.11	118,708	\$33,306,462	\$280.57
March 2014	255,898	\$100,931,746	\$394.42	136,966	\$65,695,276	\$479.65	118,932	\$35,236,470	\$296.27
April 2014	253,936	\$97,135,009	\$382.52	134,985	\$61,105,554	\$452.68	118,951	\$36,029,455	\$302.89
May 2014	253,505	\$92,440,031	\$364.65	134,113	\$57,980,291	\$432.32	119,392	\$34,459,740	\$288.63
June 2014	253,465	\$101,555,352	\$400.67	134,148	\$67,129,170	\$500.41	119,317	\$34,426,182	\$288.53
July 2014	252,643	\$86,880,628	\$343.89	133,462	\$53,597,492	\$401.59	119,181	\$33,283,136	\$279.27
August 2014	254,875	\$83,867,022	\$329.05	136,240	\$50,504,032	\$370.70	118,635	\$33,362,990	\$281.22
September 2014	254,656	\$99,908,892	\$392.33	136,630	\$66,257,100	\$484.94	118,026	\$33,651,792	\$285.12
October 2014	255,720	\$104,841,881	\$409.99	136,355	\$69,874,414	\$512.44	119,365	\$34,967,467	\$292.95
November 2014	255,842	\$86,427,963	\$337.82	139,293	\$55,129,034	\$395.78	116,549	\$31,298,929	\$268.55
December 2014	254,126	\$119,481,732	\$470.17	137,103	\$83,241,806	\$607.15	117,023	\$36,239,926	\$309.68
January 2015	251,342	\$108,350,723	\$431.09	136,237	\$76,621,467	\$562.41	115,105	\$31,729,256	\$275.65

Note: Data pursuant to a New York State Legislative mandate S. 6057-B/A. 9557-B, Chapter 57, L. 2004.

Based on local district claims submitted on claims Schedules A and C. Includes reimbursable expenditures for basic assistance, rent supplements, family shelters, domestic violence shelters, security deposits, transitional services, diversion transportation, diversion payments, and other non-assistance. These claims are net of cancellations and refunds, and include any reconciliations and supplemental claims applied to the month after initial expenditure reporting is done. Thus, these data differ from the expenditure data presented elsewhere in this document, which are derived from original payment issuance activity during the month, net of cancellations and refunds in that month.

District claiming activity for recent months is generally not complete before the statutorily required due date for this report. Thus, claims for recent months may appear substantially below those for earlier months. Claims tables in future months of this report will continue to include the historical periods above, adjusted for claiming activity occurring subsequent to this report.

Table 23
AGGREGATE CLAIMS
FEDERALLY NON-PARTICIPATING
Safety Net Assistance-FNP Maintenance of Effort
January 2015

Month	New York State			New York City			Rest of State		
	Recipients	Net Expenditures	Monthly Average Payment	Recipients	Net Expenditures	Monthly Average Payment	Recipients	Net Expenditures	Monthly Average Payment
February 2013	124,851	\$36,130,991	\$289.39	88,079	\$27,528,668	\$312.55	36,772	\$8,602,323	\$233.94
March 2013	127,575	\$30,026,618	\$235.36	90,723	\$21,776,180	\$240.03	36,852	\$8,250,438	\$223.88
April 2013	127,116	\$38,705,045	\$304.49	90,049	\$29,825,647	\$331.22	37,067	\$8,879,398	\$239.55
May 2013	126,753	\$38,944,721	\$307.25	89,559	\$30,063,718	\$335.69	37,194	\$8,881,003	\$238.78
June 2013	116,556	\$31,079,711	\$266.65	79,424	\$23,033,165	\$290.00	37,132	\$8,046,546	\$216.70
July 2013	116,391	\$32,899,994	\$282.67	78,992	\$24,451,850	\$309.55	37,399	\$8,448,144	\$225.89
August 2013	117,690	\$30,713,124	\$260.97	80,021	\$22,284,105	\$278.48	37,669	\$8,429,019	\$223.77
September 2013	117,493	\$41,604,989	\$354.11	79,627	\$33,179,665	\$416.69	37,866	\$8,425,324	\$222.50
October 2013	116,490	\$35,164,890	\$301.87	78,167	\$26,249,399	\$335.81	38,323	\$8,915,491	\$232.64
November 2013	118,437	\$34,340,355	\$289.95	80,274	\$25,654,665	\$319.59	38,163	\$8,685,690	\$227.59
December 2013	117,452	\$51,693,316	\$440.12	78,754	\$42,298,783	\$537.10	38,698	\$9,394,533	\$242.77
January 2014	116,278	\$34,146,338	\$293.66	77,255	\$25,344,805	\$328.07	39,023	\$8,801,533	\$225.55
February 2014	116,505	\$31,249,687	\$268.23	77,327	\$22,124,863	\$286.12	39,178	\$9,124,824	\$232.91
March 2014	117,670	\$41,136,866	\$349.60	78,426	\$31,555,885	\$402.37	39,244	\$9,580,981	\$244.14
April 2014	114,869	\$35,803,039	\$311.69	75,862	\$25,646,627	\$338.07	39,007	\$10,156,412	\$260.37
May 2014	114,478	\$33,507,779	\$292.70	75,265	\$24,181,272	\$321.28	39,213	\$9,326,507	\$237.84
June 2014	114,786	\$39,005,335	\$339.81	75,107	\$29,713,919	\$395.62	39,679	\$9,291,416	\$234.16
July 2014	114,537	\$32,490,337	\$283.67	74,604	\$23,371,909	\$313.28	39,933	\$9,118,428	\$228.34
August 2014	116,548	\$29,347,170	\$251.80	77,266	\$20,625,986	\$266.95	39,282	\$8,721,184	\$222.01
September 2014	117,457	\$39,875,195	\$339.49	77,600	\$30,949,827	\$398.84	39,857	\$8,925,368	\$223.93
October 2014	117,954	\$36,920,579	\$313.01	77,641	\$27,254,967	\$351.04	40,313	\$9,665,612	\$239.76
November 2014	116,448	\$31,064,132	\$266.76	76,629	\$22,565,979	\$294.48	39,819	\$8,498,153	\$213.42
December 2014	121,796	\$60,676,654	\$498.18	80,895	\$51,073,829	\$631.36	40,901	\$9,602,825	\$234.78
January 2015	120,097	\$44,576,380	\$371.17	79,585	\$35,625,838	\$447.65	40,512	\$8,950,542	\$220.94

Note: Data pursuant to a New York State Legislative mandate S. 6057-B/A. 9557-B, Chapter 57, L. 2004.

Based on local district claims submitted on claims Schedules A and C. Includes reimbursable expenditures for basic assistance, rent supplements, family shelters, domestic violence shelters, security deposits, transitional services, diversion transportation, diversion payments, and other non-assistance. These claims are net of cancellations and refunds, and include any reconciliations and supplemental claims applied to the month after initial expenditure reporting is done. Thus, these data differ from the expenditure data presented elsewhere in this document, which are derived from original payment issuance activity during the month, net of cancellations and refunds in that month.

District claiming activity for recent months is generally not complete before the statutorily required due date for this report. Thus, claims for recent months may appear substantially below those for earlier months. Claims tables in future months of this report will continue to include the historical periods above, adjusted for claiming activity occurring subsequent to this report.

Table 24
AGGREGATE CLAIMS
FEDERALLY NON-PARTICIPATING
Safety Net Assistance-FNP and Family Assistance-FNP Non-Maintenance of Effort
January 2015

Month	New York State			New York City			Rest of State		
	Recipients	Net Expenditures	Monthly Average Payment	Recipients	Net Expenditures	Monthly Average Payment	Recipients	Net Expenditures	Monthly Average Payment
February 2013	198,532	\$92,227,456	\$464.55	127,807	\$66,321,352	\$518.92	70,725	\$25,906,104	\$366.29
March 2013	198,663	\$85,434,397	\$430.05	126,728	\$58,761,221	\$463.68	71,935	\$26,673,176	\$370.80
April 2013	201,949	\$89,726,780	\$444.30	128,629	\$62,494,848	\$485.85	73,320	\$27,231,932	\$371.41
May 2013	201,162	\$93,713,041	\$465.86	128,344	\$65,960,574	\$513.94	72,818	\$27,752,467	\$381.12
June 2013	196,627	\$90,103,658	\$458.25	125,544	\$63,764,373	\$507.90	71,083	\$26,339,285	\$370.54
July 2013	195,197	\$88,206,199	\$451.88	124,049	\$61,924,371	\$499.19	71,148	\$26,281,828	\$369.40
August 2013	190,915	\$90,494,335	\$474.00	120,513	\$64,660,147	\$536.54	70,402	\$25,834,188	\$366.95
September 2013	188,617	\$80,803,727	\$428.40	119,420	\$56,101,291	\$469.78	69,197	\$24,702,436	\$356.99
October 2013	191,763	\$89,769,221	\$468.13	120,979	\$63,864,112	\$527.89	70,784	\$25,905,109	\$365.97
November 2013	188,588	\$88,197,705	\$467.67	118,878	\$62,940,060	\$529.45	69,710	\$25,257,645	\$362.32
December 2013	188,504	\$104,662,704	\$555.23	119,322	\$77,095,477	\$646.11	69,182	\$27,567,227	\$398.47
January 2014	188,589	\$87,059,172	\$461.63	118,994	\$61,529,244	\$517.08	69,595	\$25,529,928	\$366.84
February 2014	189,479	\$89,426,187	\$471.96	119,002	\$62,508,348	\$525.27	70,477	\$26,917,839	\$381.94
March 2014	192,888	\$86,098,939	\$446.37	119,340	\$58,066,383	\$486.56	73,548	\$28,032,556	\$381.15
April 2014	196,658	\$93,914,676	\$477.55	121,227	\$64,846,110	\$534.91	75,431	\$29,068,566	\$385.37
May 2014	196,629	\$93,741,382	\$476.74	121,494	\$62,548,769	\$514.83	75,135	\$31,192,613	\$415.15
June 2014	194,950	\$83,147,757	\$426.51	122,060	\$54,832,048	\$449.22	72,890	\$28,315,709	\$388.47
July 2014	195,496	\$93,640,102	\$478.99	123,341	\$66,857,332	\$542.05	72,155	\$26,782,770	\$371.18
August 2014	194,296	\$91,304,450	\$469.92	122,877	\$64,043,822	\$521.20	71,419	\$27,260,628	\$381.70
September 2014	195,696	\$87,818,464	\$448.75	125,150	\$61,519,281	\$491.56	70,546	\$26,299,183	\$372.79
October 2014	198,168	\$101,492,436	\$512.15	125,808	\$73,196,248	\$581.81	72,360	\$28,296,188	\$391.05
November 2014	194,398	\$88,742,895	\$456.50	125,576	\$64,329,091	\$512.27	68,822	\$24,413,804	\$354.74
December 2014	197,406	\$126,283,336	\$639.71	126,156	\$96,232,699	\$762.81	71,250	\$30,050,637	\$421.76
January 2015	198,112	\$100,978,908	\$509.71	127,578	\$74,662,948	\$585.23	70,534	\$26,315,960	\$373.10

Note: Data pursuant to a New York State Legislative mandate S. 6057-B/A. 9557-B, Chapter 57, L. 2004.

Based on local district claims submitted on claims Schedules A and C. Includes reimbursable expenditures for basic assistance, rent supplements, family shelters, domestic violence shelters, security deposits, transitional services, diversion transportation, diversion payments, and other non-assistance. These claims are net of cancellations and refunds, and include any reconciliations and supplemental claims applied to the month after initial expenditure reporting is done. Thus, these data differ from the expenditure data presented elsewhere in this document, which are derived from original payment issuance activity during the month, net of cancellations and refunds in that month.

District claiming activity for recent months is generally not complete before the statutorily required due date for this report. Thus, claims for recent months may appear substantially below those for earlier months. Claims tables in future months of this report will continue to include the historical periods above, adjusted for claiming activity occurring subsequent to this report.

Table 25
HOME ENERGY ASSISTANCE PROGRAM*
Number and Dollar Amount of Benefits Authorized and Administrative Allocations - Federal Fiscal Year to Date
January 2015

Local District	Benefits Authorized		Administrative Allocations
	Number	Dollar Amount	
New York State	1,323,407	\$228,897,960	\$19,198,136
New York City	700,009	33,753,343	5,173,161
Rest of State	623,398	195,144,617	14,024,975
Albany	16,295	4,077,425	243,078
Allegany	4,353	1,893,258	138,945
Broome	16,240	5,365,080	321,348
Cattaraugus	8,556	3,276,193	230,836
Cayuga	5,945	2,338,443	146,043
Chautauqua	13,784	4,879,527	347,265
Chemung	7,767	2,222,729	136,616
Chenango	5,463	2,566,167	163,864
Clinton	9,340	4,680,528	282,493
Columbia	4,457	1,799,591	105,630
Cortland	3,898	1,400,162	106,439
Delaware	4,990	2,326,446	141,216
Dutchess	12,214	3,443,509	239,627
Erie	77,131	22,483,218	2,404,000
Essex	2,924	1,403,235	88,777
Franklin	6,090	2,954,751	190,923
Fulton	6,354	2,661,082	188,772
Genesee	3,643	1,190,617	89,110
Greene	4,456	2,001,336	133,895
Hamilton	395	186,003	12,167
Herkimer	7,034	2,842,056	176,938
Jefferson	8,901	3,429,863	219,402
Lewis	2,845	1,454,782	89,794
Livingston	4,396	1,762,422	112,426
Madison	4,743	1,941,142	149,048
Monroe	51,051	11,906,444	705,604
Montgomery	5,501	2,239,469	150,507
Nassau	23,193	3,754,990	243,040
Niagara	17,967	5,335,585	368,624
Oneida	21,814	7,733,061	584,020
Onondaga	31,463	8,570,591	538,547
Ontario	5,996	1,935,592	115,374
Orange	15,248	4,406,222	341,830
Orleans	3,472	1,542,991	100,913
Oswego	9,404	4,123,902	247,674
Otsego	4,577	2,133,179	152,763
Putnam	1,712	530,012	36,266
Rensselaer	8,722	2,820,927	191,282
Rockland	12,724	2,357,807	155,821
St. Lawrence	10,656	4,713,981	368,087
Saratoga	9,170	3,730,633	288,124
Schenectady	9,714	2,652,018	187,910
Schoharie	3,033	1,488,824	98,740
Schuyler	1,857	938,234	60,928
Seneca	2,334	879,905	60,002
Steuben	7,772	3,105,936	258,257
Suffolk	40,500	12,092,073	813,253
Sullivan	6,680	2,575,854	197,575
Tioga	4,074	1,941,902	127,020
Tompkins	5,070	1,529,706	96,438
Ulster	14,280	5,227,350	363,049
Warren	4,959	2,050,329	145,876
Washington	4,716	2,205,349	147,770
Wayne	5,649	2,163,991	118,205
Westchester	33,686	2,231,036	192,045
Wyoming	2,472	970,774	63,412
Yates	1,718	676,385	47,367

* Please Note: The 2015 Home Energy Assistance Program Federal Fiscal Year is October 1, 2014 through September 30, 2015.

Table 26
HOME ENERGY ASSISTANCE PROGRAM - NON-EMERGENCY*
 Number, Total Dollar Amount and Average Dollar Amount of Benefits Authorized - Federal Fiscal Year to Date
 January 2015

Local District	Autopay			Regular Non-Autopay		
	Benefits Authorized	Dollar Amount Authorized	Average Dollar Amount	Benefits Authorized	Dollar Amount Authorized	Average Dollar Amount
New York State	1,125,489	\$136,668,669	\$121	156,987	\$71,315,022	\$454
New York City	683,352	27,889,965	41	15,382	5,383,252	350
Rest of State	442,137	108,778,704	246	141,605	65,931,770	466
Albany	13,510	2,872,318	213	2,536	1,046,207	413
Allegany	2,225	856,135	385	1,649	775,660	470
Broome	10,714	2,837,083	265	4,271	1,884,891	441
Cattaraugus	4,831	1,616,736	335	2,838	1,288,028	454
Cayuga	3,422	1,145,103	335	1,935	894,134	462
Chautauqua	8,944	2,870,779	321	3,969	1,650,462	416
Chemung	5,265	1,157,371	220	2,135	856,815	401
Chenango	2,451	926,460	378	2,117	1,147,997	542
Clinton	4,715	2,072,556	440	2,440	1,380,222	566
Columbia	2,669	818,369	307	1,334	723,772	543
Cortland	2,442	721,389	295	1,124	529,677	471
Delaware	2,360	900,924	382	1,819	985,901	542
Dutchess	9,355	1,958,799	209	2,110	1,074,267	509
Erie	56,239	14,587,736	259	19,386	7,389,398	381
Essex	1,287	481,865	374	1,289	739,213	573
Franklin	2,806	1,104,917	394	1,961	1,132,288	577
Fulton	3,406	1,167,694	343	2,078	1,035,792	498
Genesee	2,417	665,531	275	985	444,924	452
Greene	2,239	784,565	350	1,483	812,568	548
Hamilton	181	62,774	347	184	106,789	580
Herkimer	3,860	1,256,552	326	2,380	1,138,320	478
Jefferson	5,617	1,819,315	324	2,395	1,160,776	485
Lewis	1,241	573,066	462	1,038	577,066	556
Livingston	2,658	937,469	353	1,279	604,465	473
Madison	2,807	939,112	335	1,538	785,468	511
Monroe	44,535	9,295,604	209	5,575	2,115,108	379
Montgomery	3,163	1,066,515	337	1,711	837,342	489
Nassau	20,009	2,235,818	112	2,760	1,293,124	469
Niagara	12,428	3,134,436	252	4,375	1,796,780	411
Oneida	13,649	3,866,133	283	6,555	3,001,309	458
Onondaga	24,158	5,645,215	234	6,751	2,638,841	391
Ontario	4,053	1,063,913	263	1,640	717,530	438
Orange	11,562	2,560,800	221	3,123	1,480,921	474
Orleans	1,742	698,000	401	1,273	609,210	479
Oswego	5,991	2,335,971	390	2,499	1,293,240	518
Otsego	2,263	846,323	374	1,608	896,572	558
Putnam	1,157	245,485	212	497	256,688	516
Rensselaer	6,148	1,516,193	247	2,009	979,914	488
Rockland	11,503	1,862,448	162	986	379,694	385
St. Lawrence	5,624	2,082,758	370	3,218	1,730,152	538
Saratoga	6,295	2,171,090	345	2,491	1,289,999	518
Schenectady	8,390	2,085,268	249	1,159	485,019	418
Schoharie	1,420	601,901	424	1,035	568,209	549
Schuyler	824	347,607	422	676	359,240	531
Seneca	1,338	377,559	282	810	401,248	495
Steuben	3,959	1,345,854	340	2,776	1,322,487	476
Suffolk	31,878	7,602,439	238	6,828	3,593,777	526
Sullivan	3,880	1,017,782	262	1,975	1,119,972	567
Tioga	2,154	900,037	418	1,329	714,431	538
Tompkins	3,657	840,256	230	1,014	491,138	484
Ulster	9,067	2,397,999	264	3,225	1,763,385	547
Warren	2,817	932,501	331	1,532	783,303	511
Washington	2,352	927,293	394	1,591	849,633	534
Wayne	3,967	1,347,038	340	1,348	635,779	472
Westchester	32,159	1,515,338	47	1,379	621,422	451
Wyoming	1,286	437,578	340	1,019	459,908	451
Yates	1,048	340,934	325	565	281,295	498

* Please Note: The 2015 Home Energy Assistance Program Federal Fiscal Year is October 1, 2014 through September 30, 2015.

Table 27
HOME ENERGY ASSISTANCE PROGRAM - EMERGENCY*
 Number, Total Dollar Amount and Average Dollar Amount of Benefits Authorized - Federal Fiscal Year to Date
 January 2015

Local District	Emergency			Furnace Replacement			Furnace Repair & Repair/Replacement Estimates		
	Benefits Authorized	Dollar Amount Authorized	Average Dollar Amount	Benefits Authorized	Dollar Amount Authorized	Average Dollar Amount	Benefits Authorized	Dollar Amount Authorized	Average Dollar Amount
New York State	39,849	\$18,685,725	\$469	586	\$1,961,392	\$3,347	496	\$267,152	\$539
New York City	1,253	344,410	275	22	135,716	6,169	0	0	0
Rest of State	38,596	18,341,315	475	564	1,825,676	3,237	496	267,152	539
Albany	233	116,335	499	8	40,131	5,016	8	2,434	304
Allegany	424	175,110	413	26	77,742	2,990	29	8,611	297
Broome	1,230	615,350	500	7	23,793	3,399	18	3,963	220
Cattaraugus	846	326,215	386	13	38,963	2,997	28	6,251	223
Cayuga	563	273,340	486	5	19,139	3,828	20	6,727	336
Chautauqua	834	283,100	339	16	45,802	2,863	21	29,384	1,399
Chemung	349	168,525	483	13	38,260	2,943	5	1,758	352
Chenango	879	456,940	520	11	30,927	2,812	5	3,843	769
Clinton	2,145	1,166,825	544	16	49,358	3,085	24	11,567	482
Columbia	449	238,850	532	5	18,600	3,720	0	0	0
Cortland	328	145,435	443	0	0	0	4	3,661	915
Delaware	797	419,505	526	4	16,164	4,041	10	3,952	395
Dutchess	737	372,715	506	1	6,500	6,500	11	31,228	2,839
Erie	1,410	283,205	201	70	207,286	2,961	26	15,593	600
Essex	340	178,255	524	0	0	0	8	3,902	488
Franklin	1,319	713,865	541	1	2,800	2,800	3	881	294
Fulton	853	436,955	512	7	18,465	2,638	10	2,176	218
Genesee	240	79,680	332	0	0	0	1	482	482
Greene	725	383,025	528	4	16,769	4,192	5	4,409	882
Hamilton	30	16,440	548	0	0	0	0	0	0
Herkimer	779	408,535	524	11	32,826	2,984	4	5,823	1,456
Jefferson	882	438,785	497	3	9,820	3,273	4	1,167	292
Lewis	560	298,380	533	2	4,750	2,375	4	1,520	380
Livingston	444	196,705	443	10	22,933	2,293	5	850	170
Madison	378	192,075	508	11	20,629	1,875	9	3,858	429
Monroe	909	426,755	469	25	66,747	2,670	7	2,230	319
Montgomery	613	314,100	512	5	18,924	3,785	9	2,588	288
Nassau	415	187,860	453	7	37,265	5,324	2	923	462
Niagara	1,103	310,075	281	25	81,922	3,277	36	12,372	344
Oneida	1,582	809,005	511	22	54,029	2,456	6	2,585	431
Onondaga	521	238,135	457	12	36,669	3,056	21	11,731	559
Ontario	290	118,450	408	10	33,717	3,372	3	1,982	661
Orange	537	265,645	495	21	96,116	4,577	5	2,740	548
Orleans	437	170,970	391	18	63,812	3,545	2	999	500
Oswego	899	469,460	522	7	20,956	2,994	8	4,275	534
Otsego	697	372,655	535	6	16,895	2,816	3	734	245
Putnam	56	27,380	489	0	0	0	2	459	229
Rensselaer	553	285,495	516	10	36,640	3,664	2	2,685	1,342
Rockland	234	115,170	492	0	0	0	1	495	495
St. Lawrence	1,751	829,640	474	18	58,268	3,237	45	13,163	293
Saratoga	336	176,795	526	29	86,563	2,985	19	6,186	326
Schenectady	154	62,075	403	5	17,311	3,462	6	2,345	391
Schoharie	574	306,045	533	3	12,210	4,070	1	459	459
Schuyler	339	174,845	516	16	55,730	3,483	2	812	406
Seneca	180	88,085	489	3	9,460	3,153	3	3,553	1,184
Steuben	1,022	413,510	405	9	19,327	2,147	6	4,758	793
Suffolk	1,764	808,440	458	17	76,605	4,506	13	10,812	832
Sullivan	824	437,475	531	0	0	0	1	625	625
Tioga	581	297,415	512	6	20,450	3,408	4	9,569	2,392
Tompkins	394	193,650	491	1	2,800	2,800	4	1,862	466
Ulster	1,970	1,018,145	517	12	43,839	3,653	6	3,982	664
Warren	599	306,255	511	8	25,995	3,249	3	2,275	758
Washington	761	397,465	522	9	28,175	3,131	3	2,783	928
Wayne	323	161,480	500	5	18,309	3,662	6	1,385	231
Westchester	143	73,585	515	4	19,995	4,999	1	696	696
Wyoming	163	58,440	359	4	14,848	3,712	0	0	0
Yates	98	42,665	435	3	10,442	3,481	4	1,049	262

* Please Note: The 2015 Home Energy Assistance Program Federal Fiscal Year is October 1, 2014 through September 30, 2015.

Table 28
FEDERAL ALL FAMILIES WORK PARTICIPATION RATES
TANF, Safety Net Assistance MOE and Combined TANF and Safety Net Assistance MOE
January 2015

Local District	Combined TANF and Safety Net Assistance MOE			TANF			Safety Net Assistance MOE		
	Rate	Numerator	Denominator	Rate	Numerator	Denominator	Rate	Numerator	Denominator
New York State*	31.9%	28,733	89,907	31.8%	18,633	58,576	32.2%	10,100	31,332
New York City*	33.1%	17,172	51,956	31.0%	9,737	31,561	36.5%	7,435	20,395
Rest of State	21.9%	7,464	34,121	21.0%	4,969	23,679	23.9%	2,495	10,442
Albany	15.6%	145	929	13.8%	90	651	19.8%	55	278
Allegany	20.8%	31	149	19.5%	22	113	25.0%	9	36
Broome	14.7%	149	1,012	13.6%	91	667	16.8%	58	345
Cattaraugus	19.1%	22	115	19.6%	19	97	16.7%	3	18
Cayuga	14.3%	35	245	13.6%	28	206	17.9%	7	39
Chautauqua	16.9%	155	919	18.0%	110	612	14.7%	45	307
Chemung	16.8%	26	155	14.8%	19	128	25.9%	7	27
Chenango	11.7%	13	111	10.1%	10	99	25.0%	3	12
Clinton	14.8%	25	169	16.9%	22	130	7.7%	3	39
Columbia	14.8%	22	149	15.4%	19	123	11.5%	3	26
Cortland	19.1%	30	157	18.5%	22	119	21.1%	8	38
Delaware	29.1%	16	55	26.4%	14	53	100.0%	2	2
Dutchess	8.7%	23	263	7.7%	14	183	11.3%	9	80
Erie	38.1%	1,949	5,115	35.9%	1,265	3,525	43.0%	684	1,590
Essex	16.7%	5	30	17.9%	5	28	0.0%	0	2
Franklin	10.8%	17	158	8.0%	10	125	21.2%	7	33
Fulton	24.5%	12	49	26.1%	12	46	0.0%	0	3
Genesee	16.0%	15	94	13.6%	11	81	30.8%	4	13
Greene	38.1%	43	113	36.7%	29	79	41.2%	14	34
Hamilton	0.0%	0	2	0.0%	0	2	N/A	0	0
Herkimer	13.2%	16	121	13.6%	14	103	11.1%	2	18
Jefferson	11.7%	27	230	10.7%	21	196	17.6%	6	34
Lewis	0.0%	0	23	0.0%	0	22	0.0%	0	1
Livingston	9.5%	26	273	8.4%	19	226	14.9%	7	47
Madison	16.5%	18	109	19.1%	17	89	5.0%	1	20
Monroe	17.1%	969	5,680	16.2%	587	3,623	18.6%	382	2,057
Montgomery	16.9%	30	178	15.6%	24	154	25.0%	6	24
Nassau	25.0%	539	2,152	25.2%	341	1,352	24.8%	198	800
Niagara	15.4%	151	980	16.0%	110	688	14.0%	41	292
Oneida	20.2%	317	1,566	19.3%	223	1,158	23.0%	94	408
Onondaga	11.9%	281	2,359	11.1%	190	1,709	14.0%	91	650
Ontario	13.9%	28	201	13.8%	23	167	14.7%	5	34
Orange	24.7%	238	964	25.3%	146	576	23.7%	92	388
Orleans	15.3%	27	176	16.3%	20	123	13.2%	7	53
Oswego	10.2%	59	578	10.3%	50	486	9.8%	9	92
Otsego	4.3%	1	23	4.5%	1	22	0.0%	0	1
Putnam	22.2%	4	18	25.0%	4	16	0.0%	0	2
Rensselaer	18.8%	155	824	18.0%	108	600	21.0%	47	224
Rockland	27.9%	72	258	27.0%	51	189	30.4%	21	69
St. Lawrence	24.0%	88	367	23.7%	69	291	25.0%	19	76
Saratoga	8.3%	4	48	8.3%	4	48	N/A	0	0
Schenectady	15.8%	104	659	14.2%	64	451	19.2%	40	208
Schoharie	19.5%	8	41	18.4%	7	38	33.3%	1	3
Schuyler	5.1%	3	59	4.2%	2	48	9.1%	1	11
Seneca	17.3%	13	75	18.3%	11	60	13.3%	2	15
Steuben	25.0%	64	256	25.9%	49	189	22.4%	15	67
Suffolk	33.3%	793	2,381	32.9%	548	1,667	34.3%	245	714
Sullivan	10.7%	17	159	11.8%	13	110	8.2%	4	49
Tioga	22.4%	13	58	21.4%	12	56	50.0%	1	2
Tompkins	21.5%	43	200	22.0%	33	150	20.0%	10	50
Ulster	9.1%	57	629	9.6%	48	500	7.0%	9	129
Warren	10.9%	5	46	11.1%	5	45	0.0%	0	1
Washington	20.7%	12	58	20.4%	11	54	25.0%	1	4
Wayne	13.3%	19	143	13.5%	17	126	11.8%	2	17
Westchester	24.0%	523	2,178	25.3%	309	1,221	22.4%	214	957
Wyoming	13.2%	5	38	11.1%	4	36	50.0%	1	2
Yates	8.3%	2	24	8.7%	2	23	0.0%	0	1

* Statewide and New York City participation rates are estimated from federal disaggregated reporting samples, which are the source of the rates used by the United States Department of Health and Human Services to determine if a state has met participation goals. Because the sample size is insufficient to permit rate estimates for non-New York City districts, rates for those districts are derived directly from automated systems data. Thus, Rest of State and New York City numerators and denominators will not sum to the statewide total. Estimates are from fourth quarter Federal Fiscal Year 2014 samples.

Table 29

WORK SANCTION STATUS BY PRESENCE IN FEDERAL ALL FAMILIES WORK PARTICIPATION CALCULATION
TANF, Safety Net Assistance MOE and Combined TANF and Safety Net Assistance MOE
January 2015

Local District	Combined TANF and Safety Net Assistance MOE		TANF		Safety Net Assistance MOE	
	Sanctioned in the Denominator	Sanctioned Removed From Denominator	Sanctioned in the Denominator	Sanctioned Removed From Denominator	Sanctioned in the Denominator	Sanctioned Removed From Denominator
New York State*	6,633	5,611	2,905	2,810	3,728	2,801
New York City*	3,506	3,818	1,537	1,983	1,969	1,835
Rest of State	2,884	1,277	1,453	896	1,431	381
Albany	75	34	38	20	37	14
Allegany	8	10	3	8	5	2
Broome	141	37	67	26	74	11
Cattaraugus	4	5	2	5	2	0
Cayuga	26	6	16	6	10	0
Chautauqua	63	27	29	17	34	10
Chemung	22	9	12	8	10	1
Chenango	6	5	3	5	3	0
Clinton	4	3	3	2	1	1
Columbia	30	7	20	6	10	1
Cortland	2	4	0	4	2	0
Delaware	1	2	1	2	0	0
Dutchess	7	9	4	3	3	6
Erie	289	154	150	110	139	44
Essex	6	3	5	2	1	1
Franklin	14	4	9	3	5	1
Fulton	5	3	5	3	0	0
Genesee	9	2	3	2	6	0
Greene	11	6	5	6	6	0
Hamilton	0	0	0	0	0	0
Herkimer	6	6	5	5	1	1
Jefferson	27	19	19	15	8	4
Lewis	2	3	2	3	0	0
Livingston	4	6	3	4	1	2
Madison	5	2	4	2	1	0
Monroe	532	283	219	167	313	116
Montgomery	19	16	16	10	3	6
Nassau	181	62	105	43	76	19
Niagara	120	44	57	39	63	5
Oneida	120	63	65	47	55	16
Onondaga	354	106	179	78	175	28
Ontario	2	6	2	6	0	0
Orange	102	23	43	15	59	8
Orleans	17	10	11	10	6	0
Oswego	28	22	16	17	12	5
Otsego	0	1	0	1	0	0
Putnam	3	0	3	0	0	0
Rensselaer	66	25	33	16	33	9
Rockland	41	15	32	13	9	2
St. Lawrence	38	23	19	19	19	4
Saratoga	0	0	0	0	0	0
Schenectady	175	47	96	31	79	16
Schoharie	1	2	1	2	0	0
Schuyler	3	0	3	0	0	0
Seneca	2	2	1	1	1	1
Steuben	7	5	3	3	4	2
Suffolk	119	61	54	44	65	17
Sullivan	16	3	7	2	9	1
Tioga	0	7	0	6	0	1
Tompkins	30	7	12	6	18	1
Ulster	46	20	28	15	18	5
Warren	3	2	3	2	0	0
Washington	1	5	0	5	1	0
Wayne	7	7	4	7	3	0
Westchester	82	43	31	23	51	20
Wyoming	1	0	1	0	0	0
Yates	1	1	1	1	0	0

* Statewide and New York City sanction rates are estimated from federal disaggregated reporting samples, which are the source of such data used by the United States Department of Health and Human Services to determine if a state has met participation goals. Because the sample size is insufficient to permit sanction estimates for non-New York City districts, data for those districts are derived directly from automated systems. Thus, Rest of State and New York City counts may not sum to the statewide total. This table uses a federal definition of sanction and includes only persons who are deemed a work eligible individual and are sanctioned for non-compliance for work or substance abuse requirements. Estimates are from fourth quarter Federal Fiscal Year 2014 samples.

Table 30
 TEMPORARY ASSISTANCE CASES WITH EARNED INCOME
 Cases, Average Gross Earned Income and Average Net Earned Income after Application of Disregards
 January 2015

Local District	TANF			Safety Net Assistance MOE			Safety Net Assistance Non-MOE		
	Cases	Average Gross Earned Income	Average Net Earned Income	Cases	Average Gross Earned Income	Average Net Earned Income	Cases	Average Gross Earned Income	Average Net Earned Income
New York State	16,163	\$943	\$442	11,144	\$975	\$453	9,141	\$1,219	\$716
New York City	10,550	1,006	477	8,203	999	466	6,324	1,349	829
Rest of State	5,613	823	375	2,941	905	419	2,817	927	463
Albany	137	765	345	102	860	392	84	1,154	548
Allegany	28	608	264	11	671	301	19	317	159
Broome	116	742	333	85	798	363	76	666	326
Cattaraugus	22	762	342	2	990	459	9	794	385
Cayuga	23	760	342	10	705	312	13	574	281
Chautauqua	136	757	348	69	701	331	71	758	371
Chemung	19	969	475	9	870	394	7	617	310
Chenango	15	725	324	6	835	380	14	781	388
Clinton	22	845	383	6	573	288	5	710	477
Columbia	31	756	341	5	828	463	14	860	456
Cortland	26	699	309	10	744	334	15	515	302
Delaware	13	570	249	0	0	0	10	499	219
Dutchess	40	932	443	19	1,011	472	13	685	419
Erie	666	810	366	440	948	438	546	1,082	514
Essex	4	800	362	0	0	0	1	18	0
Franklin	17	725	324	8	559	244	15	630	311
Fulton	6	748	335	0	0	0	1	1,022	475
Genesee	14	665	293	4	1,184	558	3	658	297
Greene	23	853	389	12	1,006	467	12	1,063	573
Hamilton	1	200	185	0	0	0	1	236	146
Herkimer	18	618	269	5	527	223	8	516	225
Jefferson	30	655	289	8	736	329	27	592	304
Lewis	5	379	147	0	0	0	3	207	90
Livingston	42	756	338	12	855	390	11	1,046	476
Madison	13	803	364	1	240	150	2	1,235	584
Monroe	755	813	369	582	908	417	291	798	402
Montgomery	47	774	350	14	926	445	12	1,002	466
Nassau	471	882	411	224	925	430	159	849	476
Niagara	151	750	337	77	849	393	65	716	336
Oneida	274	744	330	120	850	381	214	1,114	529
Onondaga	378	773	348	180	879	407	244	1,122	544
Ontario	44	751	338	12	928	428	13	959	475
Orange	205	922	423	146	926	428	73	993	493
Orleans	19	737	330	10	925	426	16	586	315
Oswego	68	729	326	16	793	360	39	665	312
Otsego	1	969	448	0	0	0	8	596	399
Putnam	8	717	320	0	0	0	5	513	423
Rensselaer	152	754	339	75	736	329	69	906	417
Rockland	159	900	409	26	884	401	68	1,085	537
St. Lawrence	50	613	267	19	732	327	63	619	289
Saratoga	7	947	437	0	0	0	5	840	483
Schenectady	100	906	417	61	953	441	47	1,067	561
Schoharie	11	712	319	3	1,054	491	6	528	264
Schuyler	9	654	288	5	1,032	481	10	492	205
Seneca	14	745	336	7	924	425	8	861	469
Steuben	49	690	307	19	842	384	24	639	320
Suffolk	508	982	464	262	1,050	497	212	1,060	620
Sullivan	23	622	271	13	1,006	467	11	728	480
Tioga	10	898	412	1	899	413	1	208	118
Tompkins	40	706	293	16	832	375	18	549	279
Ulster	121	806	367	38	712	322	68	734	363
Warren	5	735	329	0	0	0	0	0	0
Washington	15	848	387	1	842	384	3	845	411
Wayne	19	720	304	1	856	391	6	374	209
Westchester	427	899	410	188	969	457	71	796	404
Wyoming	4	549	234	1	1,613	777	1	265	175
Yates	2	1,001	465	0	0	0	7	782	460