



**Office of Temporary  
and Disability Assistance**

# **Temporary and Disability Assistance Statistics**

**October 2015**



---

# Temporary and Disability Assistance Statistics

## OCTOBER 2015

---

### Temporary Assistance

Temporary Assistance recipients totaled 578,030 in October 2015, increasing by 4,956 (+0.9%) from the previous month. Related expenditures totaled \$189,338,933 in October 2015, increasing by approximately \$3.4 million (+1.8%) over September 2015.

### Supplemental Nutrition Assistance Program

Supplemental Nutrition Assistance Program recipients totaled 2,996,649 in October 2015, decreasing by 5,200 (-0.2%) from the previous month. Related expenditures totaled \$418,872,190 in October 2015, decreasing by approximately \$2.4 million (-0.6%) over September 2015.

### Supplemental Security Income

Supplemental Security Income recipients (including Mental Hygiene) totaled 707,415 in October 2015, increasing by 521 (+0.1%) from the previous month. Related expenditures totaled \$419,683,035 in October 2015, decreasing by approximately \$2.0 million (-0.5%) over September 2015.

Date Revised March 11, 2016

# Table of Contents

## Ten Year Trend Graphs

Temporary Assistance Recipients	4
Supplemental Nutrition Assistance Program Recipients	4
Supplemental Security Income Recipients	4

## Temporary Assistance, SSI and SNAP Summary

<b>Table 1:</b>	Temporary Assistance, Family Assistance-FP, Safety Net Assistance, Supplemental Security Income and Supplemental Nutrition Assistance Program Cases by Region	5
<b>Table 2:</b>	Temporary Assistance, Family Assistance-FP, Safety Net Assistance, Supplemental Security Income and Supplemental Nutrition Assistance Program Recipients by Region	5
<b>Table 3:</b>	Temporary Assistance, Family Assistance-FP, Safety Net Assistance, Supplemental Security Income and Supplemental Nutrition Assistance Program Expenditures by Region	5

## Temporary Assistance by Program Area

<b>Table 4:</b>	Temporary Assistance Year to Year Monthly Comparison Cases, Recipients and Expenditures	6
<b>Table 5:</b>	Temporary Assistance Cases, Recipients, Children, Adults and Expenditures	7
<b>Table 6:</b>	Family Assistance-FP Cases, Recipients, Children, Adults and Expenditures	8
<b>Table 7:</b>	Safety Net Assistance Cases, Recipients, Children, Adults and Expenditures	9

## Temporary Assistance by Funding Source and Program Area

<b>Table 8:</b>	Temporary Assistance by Funding Source (Federally Participating and Federally Non-Participating) Cases, Recipients and Expenditures	10
<b>Table 9:</b>	Temporary Assistance for Needy Families-FP by Program (Family Assistance-FP and Safety Net Assistance-FP) Cases, Recipients, Children, Adults and Expenditures	11
<b>Table 10:</b>	Safety Net Assistance-FNP and Family Assistance-FNP Cases, Recipients, Children, Adults and Expenditures	12
<b>Table 11:</b>	Safety Net Assistance-FNP by Maintenance of Effort Status Cases, Recipients, Children, Adults and Expenditures	13
<b>Table 12:</b>	Safety Net Assistance-FNP-Cash Total Cases, Recipients, Children, Adults and Expenditures	14
<b>Table 13:</b>	Safety Net Assistance-FNP-Cash by Maintenance of Effort Status Cases, Recipients, Children, Adults and Expenditures	15
<b>Table 14:</b>	Safety Net Assistance-FNP-Non-Cash Total Cases, Recipients, Children, Adults and Expenditures	16
<b>Table 15:</b>	Safety Net Assistance-FNP-Non-Cash by Maintenance of Effort Status Cases, Recipients, Children, Adults and Expenditures	17

## Supplemental Nutrition Assistance Program

<b>Table 16:</b>	Supplemental Nutrition Assistance Program Households, Persons and Value of Supplemental Nutrition Assistance Program Benefits	18
------------------	---	----

## Supplemental Security Income

<b>Table 17:</b>	Supplemental Security Income Recipients, Total Program Expenditures and Federal and State Shares	19
<b>Table 18:</b>	Supplemental Security Income Recipients by Living Arrangement and Location	20
<b>Table 19:</b>	Supplemental Security Income Recipients by Living Arrangement and Category of Assistance	20

# Table of Contents

## Child Support

<b>Table 20:</b>	Child Support Collections (IV-D)	21
------------------	----------------------------------	----

## Aggregate Claims

<b>Table 21:</b>	Aggregate Claims - Total Temporary Assistance	22
<b>Table 22:</b>	Aggregate Claims - Federally Participating - TANF	23
<b>Table 23:</b>	Aggregate Claims - Federally Non-Participating Safety Net Assistance-FNP Maintenance of Effort	24
<b>Table 24:</b>	Aggregate Claims - Federally Non-Participating Safety Net Assistance-FNP and Family Assistance-FNP Maintenance of Effort	25

## Home Energy Assistance Program

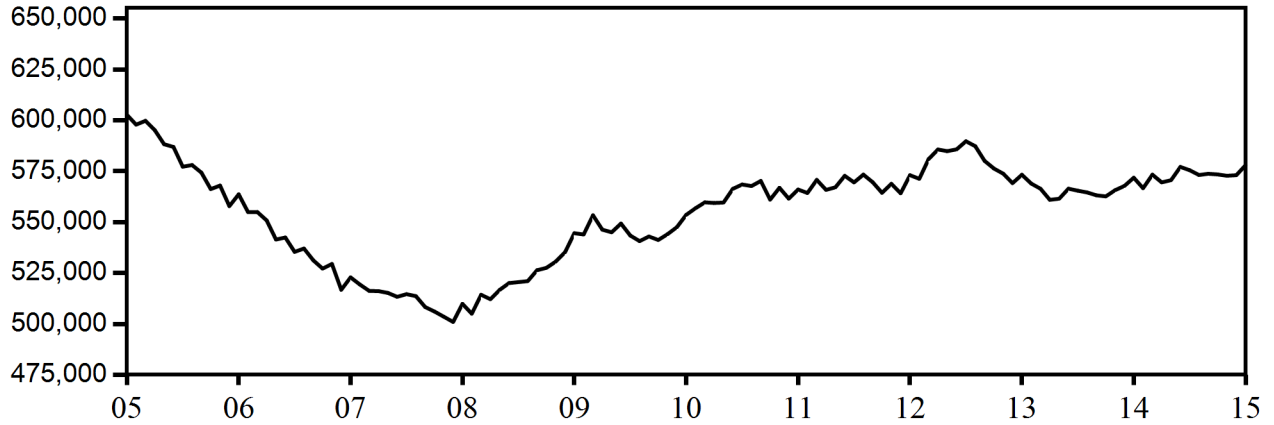
<b>Table 25:</b>	Home Energy Assistance Program Number and Dollar Amount of Benefits Authorized and Administrative Allocations	26
<b>Table 26:</b>	Home Energy Assistance Program - Non-Emergency Number, Total Dollar Amount and Average Dollar Amount of Benefits Authorized	27
<b>Table 27:</b>	Home Energy Assistance Program - Emergency Number, Total Dollar Amount and Average Dollar Amount of Benefits Authorized	28

## Welfare to Work Statistical Tables

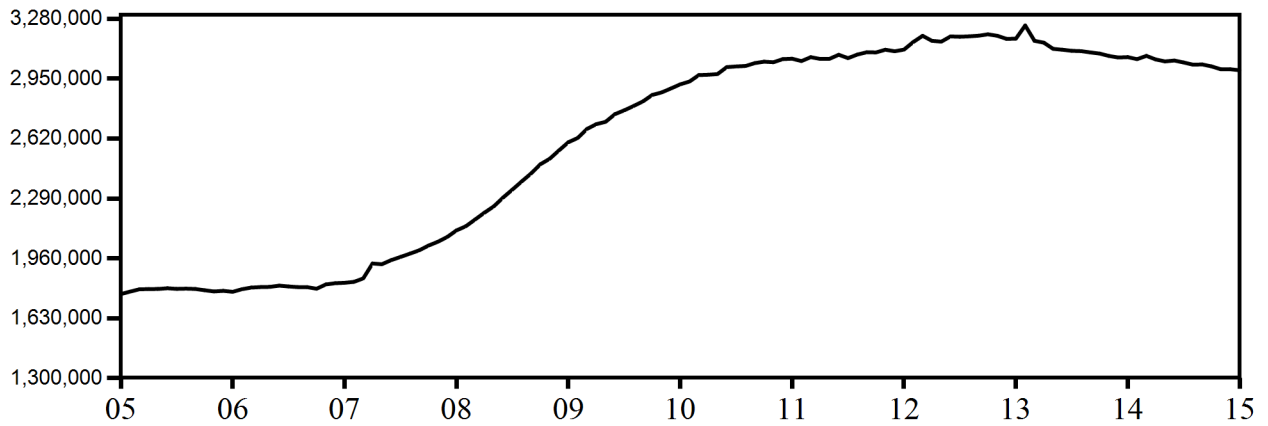
<b>Table 28:</b>	Federal All Families Work Participation Rates TANF, Safety Net Assistance MOE and Combined TANF and Safety Net Assistance MOE	29
<b>Table 29:</b>	Work Sanction Status by Presence in Federal All Families Work Participation Calculation TANF, Safety Net Assistance MOE and Combined TANF and Safety Net Assistance MOE	30
<b>Table 30:</b>	Temporary Assistance Cases with Earned Income Cases, Average Gross Earned Income and Average Net Earned Income after Application of Disregards	31

**NEW YORK STATE**  
**November 2005 - October 2015**  
**TEN YEAR TREND**

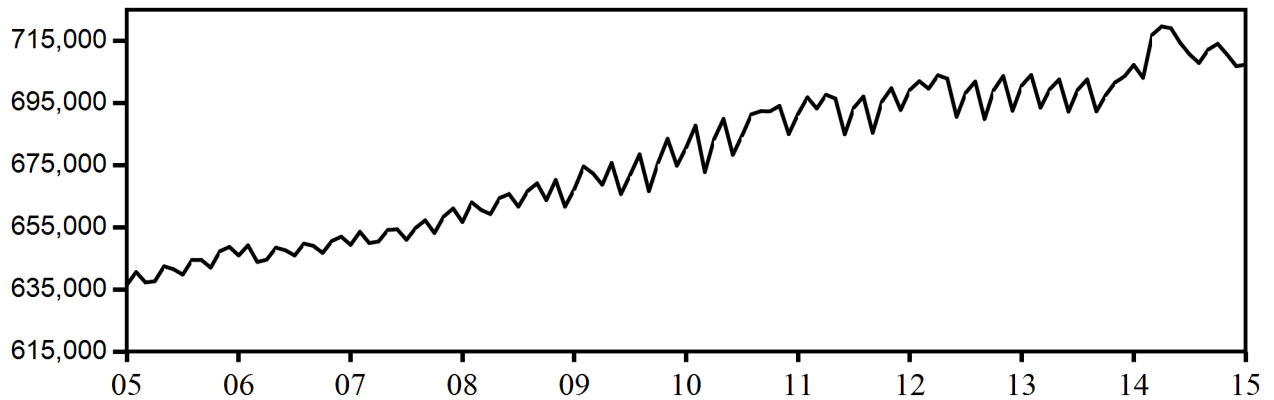
**Temporary Assistance Recipients**



**Supplemental Nutrition Assistance Program Recipients**



**Supplemental Security Income Recipients  
(Including Mental Hygiene)**



SELECTED SUMMARY PROGRAM DATA  
BY REGION

Table 1  
TEMPORARY AND DISABILITY ASSISTANCE CASES  
October 2015

Region	Cases				
	Temporary Assistance by Program			Supplemental Security Income	Supplemental Nutrition Assistance Program
	Total	Family Assistance-FP	Safety Net Assistance		
New York State	302,100	106,204	195,896	702,932	1,646,999
New York City	193,336	59,810	133,526	426,305	948,935
Rest of State	108,764	46,394	62,370	276,627	698,064

Table 2  
TEMPORARY AND DISABILITY ASSISTANCE RECIPIENTS  
October 2015

Region	Recipients				
	Temporary Assistance by Program			Supplemental Security Income	Supplemental Nutrition Assistance Program
	Total	Family Assistance-FP	Safety Net Assistance		
New York State	578,030	245,766	332,264	702,932	2,996,649
New York City	361,421	138,564	222,857	426,305	1,694,576
Rest of State	216,609	107,202	109,407	276,627	1,302,073

Table 3  
TEMPORARY AND DISABILITY ASSISTANCE EXPENDITURES  
October 2015

Region	Expenditures				
	Temporary Assistance by Program			Supplemental Security Income	Supplemental Nutrition Assistance Program
	Total	Family Assistance-FP	Safety Net Assistance		
New York State	\$189,338,933	\$68,019,356	\$121,319,577	\$417,638,190	\$418,872,190
New York City	118,959,708	36,277,284	82,682,424	255,528,123	249,559,161
Rest of State	70,379,225	31,742,072	38,637,153	162,110,067	169,313,029

Note: Supplemental Security Income data listed here do not include Mental Hygiene data. See Tables 17 - 19 for total Supplemental Security Income data.

Table 4  
**TEMPORARY ASSISTANCE**  
 Year to Year Monthly Comparison by Local District  
 Cases, Recipients and Expenditures  
 October 2015

Local District	October 2015			October 2014			October 2013		
	Cases	Recipients	Expenditures	Cases	Recipients	Expenditures	Cases	Recipients	Expenditures
New York State	302,100	578,030	\$189,338,933	298,960	571,842	\$192,173,265	298,704	573,292	\$187,274,153
New York City	193,336	361,421	118,959,708	183,091	339,804	115,445,507	183,932	342,337	114,219,022
Rest of State	108,764	216,609	70,379,225	115,869	232,038	76,727,758	114,772	230,955	73,055,131
Albany	2,907	6,273	1,989,936	3,009	6,480	2,014,209	3,073	6,789	2,120,104
Allegany	459	857	219,182	496	979	238,130	530	1,030	256,186
Broome	3,803	7,122	1,993,016	3,747	7,208	2,136,451	3,982	7,682	2,248,303
Cattaraugus	674	1,071	355,383	596	980	297,998	542	871	271,179
Cayuga	913	1,679	554,827	807	1,490	493,748	781	1,476	469,528
Chautauqua	2,656	5,561	1,330,499	2,682	5,720	1,387,837	2,699	5,876	1,469,772
Chemung	755	1,314	419,089	884	1,547	513,978	831	1,536	437,771
Chenango	437	766	203,560	457	790	218,100	370	660	180,530
Clinton	866	1,384	516,366	880	1,426	501,789	931	1,594	582,461
Columbia	532	985	311,932	548	1,069	315,185	546	1,055	305,878
Cortland	688	1,132	391,309	684	1,135	383,766	625	1,159	341,215
Delaware	244	398	114,211	281	487	154,454	287	475	134,708
Dutchess	1,211	2,166	829,156	1,392	2,535	1,104,359	1,396	2,590	1,126,304
Erie	14,884	32,384	7,461,609	15,476	33,613	8,066,343	14,153	30,967	7,107,473
Essex	119	186	89,944	140	227	98,505	149	252	102,901
Franklin	555	986	269,295	494	909	244,281	507	952	246,609
Fulton	285	493	153,633	356	588	192,894	342	634	207,283
Genesee	301	552	197,060	318	589	190,661	362	643	225,677
Greene	393	735	226,763	457	866	249,464	539	1,040	310,738
Hamilton	15	24	5,143	22	34	6,864	12	19	4,374
Herkimer	524	900	327,227	543	965	269,937	480	880	238,990
Jefferson	1,194	2,028	668,958	1,144	1,899	638,581	964	1,559	545,475
Lewis	114	190	65,380	120	203	55,711	117	185	60,625
Livingston	746	1,363	417,424	838	1,623	450,526	838	1,598	470,146
Madison	386	673	193,515	408	749	249,033	401	731	227,825
Monroe	14,545	30,154	8,359,735	16,253	33,392	10,039,726	16,848	34,270	10,108,239
Montgomery	506	1,141	277,971	563	1,366	273,533	557	1,290	342,681
Nassau	6,882	12,603	5,371,680	7,610	13,856	5,476,085	7,541	13,829	5,290,162
Niagara	3,089	5,868	1,441,681	3,378	6,515	1,553,868	3,244	6,292	1,586,401
Oneida	4,409	10,338	2,287,753	4,683	10,952	2,529,716	4,444	10,432	2,202,786
Onondaga	7,483	16,049	3,945,154	7,670	16,594	4,121,617	7,806	16,573	4,102,219
Ontario	864	1,433	532,609	889	1,537	523,877	836	1,448	474,745
Orange	2,762	5,734	2,188,373	2,972	6,283	2,914,008	3,268	6,993	2,557,455
Orleans	656	1,149	344,535	731	1,310	379,551	699	1,289	365,207
Oswego	1,687	3,443	876,584	1,774	3,726	952,094	1,708	3,673	881,734
Otsego	227	328	202,580	230	329	152,605	234	372	170,980
Putnam	116	152	108,097	150	217	133,758	143	191	135,316
Rensselaer	1,653	4,036	989,324	1,808	4,371	1,120,882	1,739	4,379	1,169,078
Rockland	1,266	2,544	828,585	1,571	3,058	898,423	1,697	3,377	1,018,007
St. Lawrence	1,293	2,481	601,203	1,379	2,711	668,336	1,240	2,443	607,362
Saratoga	376	539	214,911	397	625	237,746	400	576	259,377
Schenectady	1,980	4,359	1,543,347	2,077	4,585	1,410,311	2,079	4,514	1,277,232
Schoharie	171	301	101,203	213	381	136,129	226	381	142,092
Schuyler	221	430	119,176	215	414	128,784	228	422	137,512
Seneca	275	513	157,638	278	527	159,225	261	473	144,273
Steuben	921	1,674	498,786	965	1,834	484,421	961	1,856	489,176
Suffolk	9,783	17,786	10,150,250	10,401	19,178	10,972,242	10,222	19,162	9,537,333
Sullivan	688	1,343	404,055	740	1,549	465,442	930	1,914	595,662
Tioga	381	651	213,559	378	630	210,202	393	667	215,445
Tompkins	782	1,352	481,633	858	1,483	458,612	889	1,566	509,126
Ulster	2,013	3,700	1,363,010	2,316	4,283	1,745,917	2,175	4,095	1,447,854
Warren	219	350	139,597	251	400	178,615	239	401	164,436
Washington	387	667	314,418	358	603	231,513	372	613	259,860
Wayne	640	1,076	315,914	644	1,094	385,823	629	1,072	348,876
Westchester	6,483	12,645	6,522,431	6,988	13,537	7,115,717	6,963	13,563	6,648,067
Wyoming	193	305	101,291	188	328	96,337	193	337	101,015
Yates	152	243	77,725	162	259	99,839	151	239	73,368

Table 5  
**TEMPORARY ASSISTANCE**  
Cases, Recipients, Children, Adults and Expenditures by Local District  
October 2015

Local District	Temporary Assistance				
	Cases	Recipients	Children	Adults	Expenditures
New York State	302,100	578,030	298,177	279,853	\$189,338,933
New York City	193,336	361,421	175,139	186,282	118,959,708
Rest of State	108,764	216,609	123,038	93,571	70,379,225
Albany	2,907	6,273	3,747	2,526	1,989,936
Allegany	459	857	487	370	219,182
Broome	3,803	7,122	3,979	3,143	1,993,016
Cattaraugus	674	1,071	587	484	355,383
Cayuga	913	1,679	893	786	554,827
Chautauqua	2,656	5,561	3,142	2,419	1,330,499
Chemung	755	1,314	857	457	419,089
Chenango	437	766	463	303	203,560
Clinton	866	1,384	786	598	516,366
Columbia	532	985	524	461	311,932
Cortland	688	1,132	517	615	391,309
Delaware	244	398	247	151	114,211
Dutchess	1,211	2,166	1,392	774	829,156
Erie	14,884	32,384	18,803	13,581	7,461,609
Essex	119	186	114	72	89,944
Franklin	555	986	492	494	269,295
Fulton	285	493	305	188	153,633
Genesee	301	552	325	227	197,060
Greene	393	735	399	336	226,763
Hamilton	15	24	12	12	5,143
Herkimer	524	900	512	388	327,227
Jefferson	1,194	2,028	1,011	1,017	668,958
Lewis	114	190	122	68	65,380
Livingston	746	1,363	683	680	417,424
Madison	386	673	392	281	193,515
Monroe	14,545	30,154	17,256	12,898	8,359,735
Montgomery	506	1,141	745	396	277,971
Nassau	6,882	12,603	6,669	5,934	5,371,680
Niagara	3,089	5,868	3,163	2,705	1,441,681
Oneida	4,409	10,338	6,055	4,283	2,287,753
Onondaga	7,483	16,049	9,312	6,737	3,945,154
Ontario	864	1,433	767	666	532,609
Orange	2,762	5,734	3,356	2,378	2,188,373
Orleans	656	1,149	622	527	344,535
Oswego	1,687	3,443	1,924	1,519	876,584
Otsego	227	328	165	163	202,580
Putnam	116	152	79	73	108,097
Rensselaer	1,653	4,036	2,611	1,425	989,324
Rockland	1,266	2,544	1,591	953	828,585
St. Lawrence	1,293	2,481	1,314	1,167	601,203
Saratoga	376	539	349	190	214,911
Schenectady	1,980	4,359	2,744	1,615	1,543,347
Schoharie	171	301	182	119	101,203
Schuyler	221	430	231	199	119,176
Seneca	275	513	295	218	157,638
Steuben	921	1,674	918	756	498,786
Suffolk	9,783	17,786	9,086	8,700	10,150,250
Sullivan	688	1,343	875	468	404,055
Tioga	381	651	437	214	213,559
Tompkins	782	1,352	677	675	481,633
Ulster	2,013	3,700	1,907	1,793	1,363,010
Warren	219	350	208	142	139,597
Washington	387	667	408	259	314,418
Wayne	640	1,076	607	469	315,914
Westchester	6,483	12,645	7,359	5,286	6,522,431
Wyoming	193	305	174	131	101,291
Yates	152	243	161	82	77,725



Table 6  
**FAMILY ASSISTANCE-FP**  
Cases, Recipients, Children, Adults and Expenditures by Local District  
October 2015

Local District	Family Assistance-FP				
	Cases	Recipients	Children	Adults	Expenditures
New York State	106,204	245,766	181,398	64,368	\$68,019,356
New York City	59,810	138,564	101,256	37,308	36,277,284
Rest of State	46,394	107,202	80,142	27,060	31,742,072
Albany	1,365	3,173	2,329	844	933,444
Allegany	212	468	363	105	105,736
Broome	1,568	3,452	2,624	828	878,638
Cattaraugus	307	605	483	122	168,106
Cayuga	384	887	647	240	231,851
Chautauqua	1,102	2,605	1,912	693	585,388
Chemung	394	793	675	118	218,341
Chenango	234	479	381	98	117,851
Clinton	414	789	648	141	223,726
Columbia	234	540	389	151	141,487
Cortland	252	560	405	155	142,735
Delaware	145	286	238	48	73,212
Dutchess	618	1,275	1,059	216	450,037
Erie	6,464	15,655	11,384	4,271	3,557,024
Essex	66	122	102	20	48,324
Franklin	212	469	342	127	100,163
Fulton	155	333	272	61	81,511
Genesee	141	321	252	69	98,137
Greene	166	385	286	99	92,087
Hamilton	6	15	12	3	2,738
Herkimer	261	539	418	121	188,221
Jefferson	459	1,034	785	249	249,412
Lewis	64	130	106	24	32,647
Livingston	320	738	506	232	205,315
Madison	176	353	278	75	88,351
Monroe	5,886	14,054	10,261	3,793	3,764,269
Montgomery	309	790	607	183	163,923
Nassau	2,563	5,717	4,345	1,372	2,199,756
Niagara	1,217	2,710	1,997	713	633,795
Oneida	1,860	4,804	3,474	1,330	1,043,538
Onondaga	3,299	7,818	5,676	2,142	1,835,390
Ontario	404	831	631	200	235,355
Orange	1,159	2,711	2,047	664	990,869
Orleans	261	541	411	130	146,993
Oswego	770	1,866	1,353	513	443,026
Otsego	91	172	141	31	81,264
Putnam	46	78	70	8	40,918
Rensselaer	948	2,262	1,637	625	549,996
Rockland	573	1,298	1,089	209	387,199
St. Lawrence	541	1,265	934	331	261,400
Saratoga	206	357	320	37	104,073
Schenectady	1,030	2,443	1,838	605	848,884
Schoharie	94	213	168	45	53,863
Schuyler	99	247	176	71	61,849
Seneca	126	271	200	71	69,186
Steuben	372	851	650	201	197,437
Suffolk	3,518	8,219	6,137	2,082	4,143,384
Sullivan	369	799	657	142	205,484
Tioga	250	479	393	86	132,308
Tompkins	293	613	449	164	195,761
Ulster	813	1,811	1,297	514	555,328
Warren	117	232	190	42	64,667
Washington	199	421	348	73	135,739
Wayne	318	661	512	149	169,722
Westchester	2,749	6,305	4,942	1,363	2,906,064
Wyoming	108	195	154	41	59,861
Yates	87	162	142	20	46,289

Table 7  
SAFETY NET ASSISTANCE\*  
Cases, Recipients, Children, Adults and Expenditures by Local District  
October 2015

Local District	Safety Net Assistance					Expenditures
	Cases	Recipients	Children	Adults		
New York State	195,896	332,264	116,779	215,485		\$121,319,577
New York City	133,526	222,857	73,883	148,974		82,682,424
Rest of State	62,370	109,407	42,896	66,511		38,637,153
Albany	1,542	3,100	1,418	1,682		1,056,492
Allegany	247	389	124	265		113,446
Broome	2,235	3,670	1,355	2,315		1,114,378
Cattaraugus	367	466	104	362		187,277
Cayuga	529	792	246	546		322,976
Chautauqua	1,554	2,956	1,230	1,726		745,111
Chemung	361	521	182	339		200,748
Chenango	203	287	82	205		85,709
Clinton	452	595	138	457		292,640
Columbia	298	445	135	310		170,445
Cortland	436	572	112	460		248,574
Delaware	99	112	9	103		40,999
Dutchess	593	891	333	558		379,119
Erie	8,420	16,729	7,419	9,310		3,904,585
Essex	53	64	12	52		41,620
Franklin	343	517	150	367		169,132
Fulton	130	160	33	127		72,122
Genesee	160	231	73	158		98,923
Greene	227	350	113	237		134,676
Hamilton	9	9	0	9		2,405
Herkimer	263	361	94	267		139,006
Jefferson	735	994	226	768		419,546
Lewis	50	60	16	44		32,733
Livingston	426	625	177	448		212,109
Madison	210	320	114	206		105,164
Monroe	8,659	16,100	6,995	9,105		4,595,466
Montgomery	197	351	138	213		114,048
Nassau	4,319	6,886	2,324	4,562		3,171,924
Niagara	1,872	3,158	1,166	1,992		807,886
Oneida	2,549	5,534	2,581	2,953		1,244,215
Onondaga	4,184	8,231	3,636	4,595		2,109,764
Ontario	460	602	136	466		297,254
Orange	1,603	3,023	1,309	1,714		1,197,504
Orleans	395	608	211	397		197,542
Oswego	917	1,577	571	1,006		433,558
Otsego	136	156	24	132		121,316
Putnam	70	74	9	65		67,179
Rensselaer	705	1,774	974	800		439,328
Rockland	693	1,246	502	744		441,386
St. Lawrence	752	1,216	380	836		339,803
Saratoga	170	182	29	153		110,838
Schenectady	950	1,916	906	1,010		694,463
Schoharie	77	88	14	74		47,340
Schuyler	122	183	55	128		57,327
Seneca	149	242	95	147		88,452
Steuben	549	823	268	555		301,349
Suffolk	6,265	9,567	2,949	6,618		6,006,866
Sullivan	319	544	218	326		198,571
Tioga	131	172	44	128		81,251
Tompkins	489	739	228	511		285,872
Ulster	1,200	1,889	610	1,279		807,682
Warren	102	118	18	100		74,930
Washington	188	246	60	186		178,679
Wayne	322	415	95	320		146,192
Westchester	3,734	6,340	2,417	3,923		3,616,367
Wyoming	85	110	20	90		41,430
Yates	65	81	19	62		31,436

\* Includes Federally Non-Participating Family Assistance cases (non-disabled two-parent Family Assistance cases).

Table 8  
**TEMPORARY ASSISTANCE BY FUNDING SOURCE**  
 Cases, Recipients, and Expenditures by Local District  
 October 2015

Local District	Total			Federally Participating-TANF Family Assistance-FP and Safety Net Assistance-FP			Federally Non-Participating Safety Net Assistance-FNP and Family Assistance-FNP		
	Cases	Recipients	Expenditures	Cases	Recipients	Expenditures	Cases	Recipients	Expenditures
New York State	302,100	578,030	\$189,338,933	107,460	249,057	\$68,865,780	194,640	328,973	\$120,473,153
New York City	193,336	361,421	118,959,708	59,974	138,939	36,352,362	133,362	222,482	82,607,346
Rest of State	108,764	216,609	70,379,225	47,486	110,118	32,513,418	61,278	106,491	37,865,807
Albany	2,907	6,273	1,989,936	1,378	3,208	941,784	1,529	3,065	1,048,152
Allegany	459	857	219,182	214	475	108,808	245	382	110,374
Broome	3,803	7,122	1,993,016	1,619	3,590	911,939	2,184	3,532	1,081,077
Cattaraugus	674	1,071	355,383	323	648	174,950	351	423	180,433
Cayuga	913	1,679	554,827	408	951	250,799	505	728	304,028
Chautauqua	2,656	5,561	1,330,499	1,123	2,654	596,499	1,533	2,907	734,000
Chemung	755	1,314	419,089	403	818	223,761	352	496	195,328
Chenango	437	766	203,560	237	488	118,580	200	278	84,980
Clinton	866	1,384	516,366	419	798	225,902	447	586	290,464
Columbia	532	985	311,932	241	560	145,683	291	425	166,249
Cortland	688	1,132	391,309	267	595	150,666	421	537	240,643
Delaware	244	398	114,211	146	288	73,297	98	110	40,914
Dutchess	1,211	2,166	829,156	624	1,291	463,126	587	875	366,030
Erie	14,884	32,384	7,461,609	6,562	15,908	3,608,233	8,322	16,476	3,853,376
Essex	119	186	89,944	66	122	48,324	53	64	41,620
Franklin	555	986	269,295	213	471	102,430	342	515	166,865
Fulton	285	493	153,633	157	339	82,759	128	154	70,874
Genesee	301	552	197,060	148	342	101,846	153	210	95,214
Greene	393	735	226,763	167	387	93,635	226	348	133,128
Hamilton	15	24	5,143	6	15	2,738	9	9	2,405
Herkimer	524	900	327,227	266	556	190,702	258	344	136,525
Jefferson	1,194	2,028	668,958	471	1,064	254,972	723	964	413,986
Lewis	114	190	65,380	65	134	33,286	49	56	32,094
Livingston	746	1,363	417,424	327	751	214,989	419	612	202,435
Madison	386	673	193,515	189	397	98,462	197	276	95,053
Monroe	14,545	30,154	8,359,735	6,260	15,059	3,979,333	8,285	15,095	4,380,402
Montgomery	506	1,141	277,971	311	794	164,682	195	347	113,289
Nassau	6,882	12,603	5,371,680	2,572	5,736	2,210,269	4,310	6,867	3,161,411
Niagara	3,089	5,868	1,441,681	1,295	2,922	673,503	1,794	2,946	768,178
Oneida	4,409	10,338	2,287,753	1,892	4,891	1,062,189	2,517	5,447	1,225,564
Onondaga	7,483	16,049	3,945,154	3,316	7,864	1,843,512	4,167	8,185	2,101,642
Ontario	864	1,433	532,609	408	839	240,431	456	594	292,178
Orange	2,762	5,734	2,188,373	1,180	2,758	1,014,828	1,582	2,976	1,173,545
Orleans	656	1,149	344,535	270	568	153,246	386	581	191,289
Oswego	1,687	3,443	876,584	803	1,983	460,505	884	1,460	416,079
Otsego	227	328	202,580	95	185	84,737	132	143	117,843
Putnam	116	152	108,097	48	81	45,090	68	71	63,007
Rensselaer	1,653	4,036	989,324	957	2,291	555,981	696	1,745	433,343
Rockland	1,266	2,544	828,585	580	1,314	392,775	686	1,230	435,810
St. Lawrence	1,293	2,481	601,203	544	1,271	264,050	749	1,210	337,153
Saratoga	376	539	214,911	207	359	104,880	169	180	110,031
Schenectady	1,980	4,359	1,543,347	1,036	2,462	851,931	944	1,897	691,416
Schoharie	171	301	101,203	94	213	53,863	77	88	47,340
Schuyler	221	430	119,176	99	247	61,849	122	183	57,327
Seneca	275	513	157,638	127	272	69,534	148	241	88,104
Steuben	921	1,674	498,786	374	859	199,991	547	815	298,795
Suffolk	9,783	17,786	10,150,250	3,591	8,415	4,248,149	6,192	9,371	5,902,101
Sullivan	688	1,343	404,055	374	812	207,229	314	531	196,826
Tioga	381	651	213,559	256	487	146,594	125	164	66,965
Tompkins	782	1,352	481,633	309	650	205,158	473	702	276,475
Ulster	2,013	3,700	1,363,010	819	1,824	560,798	1,194	1,876	802,212
Warren	219	350	139,597	122	243	67,023	97	107	72,574
Washington	387	667	314,418	206	441	139,133	181	226	175,285
Wayne	640	1,076	315,914	335	707	182,412	305	369	133,502
Westchester	6,483	12,645	6,522,431	2,771	6,361	2,944,755	3,712	6,284	3,577,676
Wyoming	193	305	101,291	109	198	60,529	84	107	40,762
Yates	152	243	77,725	87	162	46,289	65	81	31,436

Table 9  
**TEMPORARY ASSISTANCE FOR NEEDY FAMILIES-FP BY PROGRAM**  
 Cases, Recipients, Children, Adults and Expenditures by Local District  
 October 2015

Local District	Family Assistance-FP					Safety Net Assistance-FP				
	Cases	Recipients	Children	Adults	Expenditures	Cases	Recipients	Children	Adults	Expenditures
New York State	106,204	245,766	181,398	64,368	\$68,019,356	1,256	3,291	1,932	1,359	\$846,424
New York City	59,810	138,564	101,256	37,308	36,277,284	164	375	269	106	75,078
Rest of State	46,394	107,202	80,142	27,060	31,742,072	1,092	2,916	1,663	1,253	771,346
Albany	1,365	3,173	2,329	844	933,444	13	35	21	14	8,340
Allegany	212	468	363	105	105,736	2	7	3	4	3,072
Broome	1,568	3,452	2,624	828	878,638	51	138	76	62	33,301
Cattaraugus	307	605	483	122	168,106	16	43	23	20	6,844
Cayuga	384	887	647	240	231,851	24	64	39	25	18,948
Chautauqua	1,102	2,605	1,912	693	585,388	21	49	25	24	11,111
Chemung	394	793	675	118	218,341	9	25	13	12	5,420
Chenango	234	479	381	98	117,851	3	9	6	3	729
Clinton	414	789	648	141	223,726	5	9	4	5	2,176
Columbia	234	540	389	151	141,487	7	20	12	8	4,196
Cortland	252	560	405	155	142,735	15	35	16	19	7,931
Delaware	145	286	238	48	73,212	1	2	1	1	85
Dutchess	618	1,275	1,059	216	450,037	6	16	9	7	13,089
Erie	6,464	15,655	11,384	4,271	3,557,024	98	253	142	111	51,209
Essex	66	122	102	20	48,324	0	0	0	0	0
Franklin	212	469	342	127	100,163	1	2	1	1	2,267
Fulton	155	333	272	61	81,511	2	6	4	2	1,248
Genesee	141	321	252	69	98,137	7	21	14	7	3,709
Greene	166	385	286	99	92,087	1	2	1	1	1,548
Hamilton	6	15	12	3	2,738	0	0	0	0	0
Herkimer	261	539	418	121	188,221	5	17	9	8	2,481
Jefferson	459	1,034	785	249	249,412	12	30	17	13	5,560
Lewis	64	130	106	24	32,647	1	4	3	1	639
Livingston	320	738	506	232	205,315	7	13	6	7	9,674
Madison	176	353	278	75	88,351	13	44	28	16	10,111
Monroe	5,886	14,054	10,261	3,793	3,764,269	374	1,005	586	419	215,064
Montgomery	309	790	607	183	163,923	2	4	2	2	759
Nassau	2,563	5,717	4,345	1,372	2,199,756	9	19	10	9	10,513
Niagara	1,217	2,710	1,997	713	633,795	78	212	115	97	39,708
Oneida	1,860	4,804	3,474	1,330	1,043,538	32	87	49	38	18,651
Onondaga	3,299	7,818	5,676	2,142	1,835,390	17	46	28	18	8,122
Ontario	404	831	631	200	235,355	4	8	4	4	5,076
Orange	1,159	2,711	2,047	664	990,869	21	47	25	22	23,959
Orleans	261	541	411	130	146,993	9	27	18	9	6,253
Oswego	770	1,866	1,353	513	443,026	33	117	75	42	17,479
Otsego	91	172	141	31	81,264	4	13	8	5	3,473
Putnam	46	78	70	8	40,918	2	3	1	2	4,172
Rensselaer	948	2,262	1,637	625	549,996	9	29	19	10	5,985
Rockland	573	1,298	1,089	209	387,199	7	16	7	9	5,576
St. Lawrence	541	1,265	934	331	261,400	3	6	3	3	2,650
Saratoga	206	357	320	37	104,073	1	2	1	1	807
Schenectady	1,030	2,443	1,838	605	848,884	6	19	11	8	3,047
Schoharie	94	213	168	45	53,863	0	0	0	0	0
Schuyler	99	247	176	71	61,849	0	0	0	0	0
Seneca	126	271	200	71	69,186	1	1	0	1	348
Steuben	372	851	650	201	197,437	2	8	5	3	2,554
Suffolk	3,518	8,219	6,137	2,082	4,143,384	73	196	107	89	104,765
Sullivan	369	799	657	142	205,484	5	13	7	6	1,745
Tioga	250	479	393	86	132,308	6	8	3	5	14,286
Tompkins	293	613	449	164	195,761	16	37	19	18	9,397
Ulster	813	1,811	1,297	514	555,328	6	13	7	6	5,470
Warren	117	232	190	42	64,667	5	11	6	5	2,356
Washington	199	421	348	73	135,739	7	20	13	7	3,394
Wayne	318	661	512	149	169,722	17	46	28	18	12,690
Westchester	2,749	6,305	4,942	1,363	2,906,064	22	56	31	25	38,691
Wyoming	108	195	154	41	59,861	1	3	2	1	668
Yates	87	162	142	20	46,289	0	0	0	0	0

Table 10  
 SAFETY NET ASSISTANCE-FNP AND FAMILY ASSISTANCE-FNP  
 Cases, Recipients, Children, Adults and Expenditures by Local District  
 October 2015

Local District	Safety Net Assistance-FNP and Family Assistance-FNP				
	Cases	Recipients	Children	Adults	Expenditures
New York State	194,640	328,973	114,847	214,126	\$120,473,153
New York City	133,362	222,482	73,614	148,868	82,607,346
Rest of State	61,278	106,491	41,233	65,258	37,865,807
Albany	1,529	3,065	1,397	1,668	1,048,152
Allegany	245	382	121	261	110,374
Broome	2,184	3,532	1,279	2,253	1,081,077
Cattaraugus	351	423	81	342	180,433
Cayuga	505	728	207	521	304,028
Chautauqua	1,533	2,907	1,205	1,702	734,000
Chemung	352	496	169	327	195,328
Chenango	200	278	76	202	84,980
Clinton	447	586	134	452	290,464
Columbia	291	425	123	302	166,249
Cortland	421	537	96	441	240,643
Delaware	98	110	8	102	40,914
Dutchess	587	875	324	551	366,030
Erie	8,322	16,476	7,277	9,199	3,853,376
Essex	53	64	12	52	41,620
Franklin	342	515	149	366	166,865
Fulton	128	154	29	125	70,874
Genesee	153	210	59	151	95,214
Greene	226	348	112	236	133,128
Hamilton	9	9	0	9	2,405
Herkimer	258	344	85	259	136,525
Jefferson	723	964	209	755	413,986
Lewis	49	56	13	43	32,094
Livingston	419	612	171	441	202,435
Madison	197	276	86	190	95,053
Monroe	8,285	15,095	6,409	8,686	4,380,402
Montgomery	195	347	136	211	113,289
Nassau	4,310	6,867	2,314	4,553	3,161,411
Niagara	1,794	2,946	1,051	1,895	768,178
Oneida	2,517	5,447	2,532	2,915	1,225,564
Onondaga	4,167	8,185	3,608	4,577	2,101,642
Ontario	456	594	132	462	292,178
Orange	1,582	2,976	1,284	1,692	1,173,545
Orleans	386	581	193	388	191,289
Oswego	884	1,460	496	964	416,079
Otsego	132	143	16	127	117,843
Putnam	68	71	8	63	63,007
Rensselaer	696	1,745	955	790	433,343
Rockland	686	1,230	495	735	435,810
St. Lawrence	749	1,210	377	833	337,153
Saratoga	169	180	28	152	110,031
Schenectady	944	1,897	895	1,002	691,416
Schoharie	77	88	14	74	47,340
Schuyler	122	183	55	128	57,327
Seneca	148	241	95	146	88,104
Steuben	547	815	263	552	298,795
Suffolk	6,192	9,371	2,842	6,529	5,902,101
Sullivan	314	531	211	320	196,826
Tioga	125	164	41	123	66,965
Tompkins	473	702	209	493	276,475
Ulster	1,194	1,876	603	1,273	802,212
Warren	97	107	12	95	72,574
Washington	181	226	47	179	175,285
Wayne	305	369	67	302	133,502
Westchester	3,712	6,284	2,386	3,898	3,577,676
Wyoming	84	107	18	89	40,762
Yates	65	81	19	62	31,436

Table 11  
**SAFETY NET ASSISTANCE-FNP BY MAINTENANCE OF EFFORT STATUS**  
 Maintenance of Effort (MOE) vs. Non-Maintenance of Effort (Non-MOE)  
 Cases, Recipients, Children, Adults and Expenditures by Local District  
 October 2015

Local District	Maintenance of Effort (MOE)					Non-Maintenance of Effort (Non-MOE)*				
	Cases	Recipients	Children	Adults	Expenditures	Cases	Recipients	Children	Adults	Expenditures
New York State	38,246	125,581	83,584	41,997	\$27,070,267	156,394	203,392	31,263	172,129	\$93,402,886
New York City	27,006	86,021	55,722	30,299	17,706,201	106,356	136,461	17,892	118,569	64,901,145
Rest of State	11,240	39,560	27,862	11,698	9,364,066	50,038	66,931	13,371	53,560	28,501,741
Albany	354	1,309	943	366	308,147	1,175	1,756	454	1,302	740,005
Allegany	34	112	76	36	20,661	211	270	45	225	89,713
Broome	352	1,195	829	366	213,320	1,832	2,337	450	1,887	867,757
Cattaraugus	21	66	44	22	12,865	330	357	37	320	167,568
Cayuga	49	159	109	50	35,713	456	569	98	471	268,315
Chautauqua	374	1,271	857	414	234,370	1,159	1,636	348	1,288	499,630
Chemung	31	119	90	29	18,830	321	377	79	298	176,498
Chenango	11	38	27	11	6,305	189	240	49	191	78,675
Clinton	41	124	82	42	24,196	406	462	52	410	266,268
Columbia	31	109	78	31	18,795	260	316	45	271	147,454
Cortland	25	84	57	27	15,584	396	453	39	414	225,059
Delaware	0	0	0	0	0	98	110	8	102	40,914
Dutchess	93	320	222	98	62,246	494	555	102	453	303,784
Erie	1,685	6,109	4,386	1,723	1,066,418	6,637	10,367	2,891	7,476	2,786,958
Essex	2	10	7	3	2,063	51	54	5	49	39,557
Franklin	30	98	67	31	16,858	312	417	82	335	150,007
Fulton	3	9	6	3	1,923	125	145	23	122	68,951
Genesee	15	55	40	15	9,566	138	155	19	136	85,648
Greene	39	129	89	40	23,871	187	219	23	196	109,257
Hamilton	0	0	0	0	0	9	9	0	9	2,405
Herkimer	27	97	71	26	18,369	231	247	14	233	118,156
Jefferson	44	144	100	44	24,219	679	820	109	711	389,767
Lewis	1	4	3	1	848	48	52	10	42	31,246
Livingston	46	145	95	50	27,954	373	467	76	391	174,481
Madison	23	84	59	25	12,876	174	192	27	165	82,177
Monroe	2,121	7,439	5,236	2,203	1,517,096	6,164	7,656	1,173	6,483	2,863,306
Montgomery	39	135	94	41	24,865	156	212	42	170	88,424
Nassau	820	2,637	1,795	842	897,575	3,490	4,230	519	3,711	2,263,836
Niagara	305	1,064	743	321	161,534	1,489	1,882	308	1,574	606,644
Oneida	468	1,847	1,346	501	301,996	2,049	3,600	1,186	2,414	923,568
Onondaga	717	2,738	2,006	732	432,246	3,450	5,447	1,602	3,845	1,669,396
Ontario	36	118	82	36	23,146	420	476	50	426	269,032
Orange	393	1,381	970	411	372,717	1,189	1,595	314	1,281	800,828
Orleans	50	164	115	49	31,895	336	417	78	339	159,394
Oswego	110	363	248	115	64,796	774	1,097	248	849	351,283
Otsego	0	0	0	0	0	132	143	16	127	117,843
Putnam	2	4	2	2	1,331	66	67	6	61	61,676
Rensselaer	239	857	615	242	147,878	457	888	340	548	285,465
Rockland	84	308	220	88	61,419	602	922	275	647	374,391
St. Lawrence	87	258	167	91	42,614	662	952	210	742	294,539
Saratoga	1	3	2	1	20	168	177	26	151	110,011
Schenectady	233	889	651	238	213,458	711	1,008	244	764	477,958
Schoharie	2	6	4	2	898	75	82	10	72	46,442
Schuyler	11	35	23	12	5,213	111	148	32	116	52,114
Seneca	24	85	59	26	14,251	124	156	36	120	73,853
Steuben	72	249	169	80	46,396	475	566	94	472	252,399
Suffolk	817	3,030	2,144	886	1,453,921	5,375	6,341	698	5,643	4,448,180
Sullivan	49	167	117	50	29,873	265	364	94	270	166,953
Tioga	8	24	18	6	5,146	117	140	23	117	61,819
Tompkins	54	196	139	57	32,303	419	506	70	436	244,172
Ulster	168	553	383	170	151,730	1,026	1,323	220	1,103	650,482
Warren	2	7	6	1	1,086	95	100	6	94	71,488
Washington	5	17	11	6	4,143	176	209	36	173	171,142
Wayne	17	51	35	16	9,061	288	318	32	286	124,441
Westchester	968	3,115	2,104	1,011	1,133,808	2,744	3,169	282	2,887	2,443,868
Wyoming	5	23	16	7	4,382	79	84	2	82	36,380
Yates	2	7	5	2	1,272	63	74	14	60	30,164

\* The Non-MOE category includes otherwise Temporary Assistance for Needy Families eligible or otherwise Safety Net Assistance MOE eligible non-disabled two-parent cases.

Table 12  
SAFETY NET ASSISTANCE-FNP-CASH TOTAL\*  
Cases, Recipients, Children, Adults and Expenditures by Local District  
October 2015

Local District	Safety Net Assistance-FNP Cash Total				
	Cases	Recipients	Children	Adults	Expenditures
New York State	See Note	See Note	See Note	See Note	See Note
New York City	See Note	See Note	See Note	See Note	See Note
Rest of State	34,897	50,041	12,254	37,787	\$19,416,054
Albany	842	1,344	393	951	533,390
Allegany	127	181	40	141	48,159
Broome	1,219	1,593	317	1,276	529,131
Cattaraugus	240	286	46	240	115,752
Cayuga	349	455	94	361	202,312
Chautauqua	792	1,175	291	884	332,277
Chemung	277	349	96	253	146,449
Chenango	159	216	56	160	63,484
Clinton	323	407	78	329	210,863
Columbia	175	224	38	186	88,454
Cortland	252	306	39	267	126,488
Delaware	80	92	8	84	28,552
Dutchess	337	450	139	311	183,846
Erie	4,717	8,073	2,644	5,429	1,952,965
Essex	42	45	5	40	28,671
Franklin	241	323	65	258	117,910
Fulton	90	107	21	86	39,454
Genesee	80	91	13	78	44,616
Greene	129	171	30	141	72,892
Hamilton	7	7	0	7	2,045
Herkimer	158	186	25	161	77,733
Jefferson	495	633	108	525	263,326
Lewis	33	37	5	32	20,489
Livingston	310	393	68	325	144,285
Madison	136	177	49	128	67,455
Monroe	3,916	5,480	1,300	4,180	1,820,155
Montgomery	112	155	29	126	59,200
Nassau	2,368	2,907	382	2,525	1,572,051
Niagara	970	1,270	241	1,029	383,371
Oneida	1,612	2,999	1,069	1,930	704,987
Onondaga	3,062	5,136	1,723	3,413	1,483,205
Ontario	298	347	40	307	181,607
Orange	776	1,091	251	840	492,211
Orleans	222	307	86	221	108,098
Oswego	592	848	197	651	259,620
Otsego	104	113	10	103	97,518
Putnam	45	47	7	40	31,826
Rensselaer	353	660	243	417	201,397
Rockland	286	412	106	306	162,389
St. Lawrence	451	667	154	513	187,533
Saratoga	125	136	27	109	63,153
Schenectady	492	677	151	526	323,084
Schoharie	61	68	10	58	36,676
Schuyler	84	111	29	82	38,370
Seneca	94	137	45	92	52,724
Steuben	361	443	80	363	191,841
Suffolk	3,856	4,883	798	4,085	3,288,530
Sullivan	161	235	77	158	74,562
Tioga	100	123	22	101	44,270
Tompkins	272	337	49	288	157,686
Ulster	663	888	166	722	437,054
Warren	64	69	6	63	43,870
Washington	154	187	37	150	143,761
Wayne	195	224	25	199	75,278
Westchester	1,336	1,644	208	1,436	1,215,630
Wyoming	58	66	6	60	25,129
Yates	44	53	12	41	18,270

Note: A breakout of Safety Net Assistance-FNP-Cash and Safety Net Assistance-FNP-Non-Cash data is not available for New York City.

\* May include otherwise Temporary Assistance for Needy Families eligible or otherwise Safety Net Assistance MOE eligible non-disabled two-parent cases.

Table 13  
**SAFETY NET ASSISTANCE-FNP-CASH BY MAINTENANCE OF EFFORT STATUS**  
 Maintenance of Effort (MOE) vs. Non-Maintenance of Effort (Non-MOE)  
 Cases, Recipients, Children, Adults and Expenditures by Local District  
 October 2015

Local District	Maintenance of Effort (MOE)					Non-Maintenance of Effort (Non-MOE)*				
	Cases	Recipients	Children	Adults	Expenditures	Cases	Recipients	Children	Adults	Expenditures
New York State	See Note	See Note	See Note	See Note	See Note	See Note	See Note	See Note	See Note	See Note
New York City	See Note	See Note	See Note	See Note	See Note	See Note	See Note	See Note	See Note	See Note
Rest of State	1,304	4,351	2,923	1,428	\$1,042,313	33,593	45,690	9,331	36,359	\$18,373,741
Albany	30	95	62	33	21,001	812	1,249	331	918	512,389
Allegany	1	5	3	2	467	126	176	37	139	47,692
Broome	26	82	52	30	16,982	1,193	1,511	265	1,246	512,149
Cattaraugus	12	35	22	13	7,199	228	251	24	227	108,553
Cayuga	5	19	16	3	4,208	344	436	78	358	198,104
Chautauqua	27	86	53	33	13,679	765	1,089	238	851	318,598
Chemung	7	24	17	7	5,129	270	325	79	246	141,320
Chenango	3	12	9	3	2,263	156	204	47	157	61,221
Clinton	17	47	30	17	9,676	306	360	48	312	201,187
Columbia	2	6	4	2	1,311	173	218	34	184	87,143
Cortland	1	3	2	1	670	251	303	37	266	125,818
Delaware	0	0	0	0	0	80	92	8	84	28,552
Dutchess	32	111	77	34	20,092	305	339	62	277	163,754
Erie	226	745	505	240	143,059	4,491	7,328	2,139	5,189	1,809,906
Essex	0	0	0	0	0	42	45	5	40	28,671
Franklin	2	6	4	2	1,103	239	317	61	256	116,807
Fulton	1	3	2	1	82	89	104	19	85	39,372
Genesee	2	6	4	2	2,154	78	85	9	76	42,462
Greene	5	21	13	8	5,436	124	150	17	133	67,456
Hamilton	0	0	0	0	0	7	7	0	7	2,045
Herkimer	7	23	16	7	4,518	151	163	9	154	73,215
Jefferson	10	28	18	10	5,342	485	605	90	515	257,984
Lewis	0	0	0	0	0	33	37	5	32	20,489
Livingston	8	25	16	9	4,401	302	368	52	316	139,884
Madison	12	41	28	13	7,448	124	136	21	115	60,007
Monroe	209	709	488	221	150,014	3,707	4,771	812	3,959	1,670,141
Montgomery	2	6	4	2	1,352	110	149	25	124	57,848
Nassau	48	129	79	50	42,489	2,320	2,778	303	2,475	1,529,562
Niagara	33	105	64	41	18,584	937	1,165	177	988	364,787
Oneida	64	240	166	74	42,490	1,548	2,759	903	1,856	662,497
Onondaga	193	722	513	209	121,867	2,869	4,414	1,210	3,204	1,361,338
Ontario	0	0	0	0	0	298	347	40	307	181,607
Orange	40	135	89	46	31,314	736	956	162	794	460,897
Orleans	9	29	20	9	6,017	213	278	66	212	102,081
Oswego	12	30	18	12	5,341	580	818	179	639	254,279
Otsego	0	0	0	0	0	104	113	10	103	97,518
Putnam	1	2	1	1	501	44	45	6	39	31,325
Rensselaer	3	11	8	3	1,579	350	649	235	414	199,818
Rockland	5	19	12	7	1,764	281	393	94	299	160,625
St. Lawrence	13	29	16	13	6,037	438	638	138	500	181,496
Saratoga	1	3	2	1	20	124	133	25	108	63,133
Schenectady	8	24	16	8	6,211	484	653	135	518	316,873
Schoharie	0	0	0	0	0	61	68	10	58	36,676
Schuyler	3	9	6	3	1,423	81	102	23	79	36,947
Seneca	8	28	19	9	5,149	86	109	26	83	47,575
Steuben	4	8	4	4	2,061	357	435	76	359	189,780
Suffolk	137	514	347	167	262,216	3,719	4,369	451	3,918	3,026,314
Sullivan	6	16	10	6	2,928	155	219	67	152	71,634
Tioga	0	0	0	0	0	100	123	22	101	44,270
Tompkins	4	9	5	4	1,931	268	328	44	284	155,755
Ulster	8	17	8	9	4,915	655	871	158	713	432,139
Warren	0	0	0	0	0	64	69	6	63	43,870
Washington	2	8	6	2	1,174	152	179	31	148	142,587
Wayne	5	11	6	5	2,339	190	213	19	194	72,939
Westchester	49	110	59	51	45,462	1,287	1,534	149	1,385	1,170,168
Wyoming	1	5	4	1	915	57	61	2	59	24,214
Yates	0	0	0	0	0	44	53	12	41	18,270

Note: A breakout of Safety Net Assistance-FNP-Cash and Safety Net Assistance-FNP-Non-Cash data is not available for New York City.

\* The Non-MOE category includes otherwise Temporary Assistance for Needy Families eligible or otherwise Safety Net Assistance MOE eligible non-disabled two-parent cases.



Table 14  
SAFETY NET ASSISTANCE-FNP-NON-CASH TOTAL\*  
Cases, Recipients, Children, Adults and Expenditures by Local District  
October 2015

Local District	Safety Net Assistance-FNP-Non-Cash Total				
	Cases	Recipients	Children	Adults	Expenditures
New York State	See Note	See Note	See Note	See Note	See Note
New York City	See Note	See Note	See Note	See Note	See Note
Rest of State	26,381	56,450	28,979	27,471	\$18,449,753
Albany	687	1,721	1,004	717	514,762
Allegany	118	201	81	120	62,215
Broome	965	1,939	962	977	551,946
Cattaraugus	111	137	35	102	64,681
Cayuga	156	273	113	160	101,716
Chautauqua	741	1,732	914	818	401,723
Chemung	75	147	73	74	48,879
Chenango	41	62	20	42	21,496
Clinton	124	179	56	123	79,601
Columbia	116	201	85	116	77,795
Cortland	169	231	57	174	114,155
Delaware	18	18	0	18	12,362
Dutchess	250	425	185	240	182,184
Erie	3,605	8,403	4,633	3,770	1,900,411
Essex	11	19	7	12	12,949
Franklin	101	192	84	108	48,955
Fulton	38	47	8	39	31,420
Genesee	73	119	46	73	50,598
Greene	97	177	82	95	60,236
Hamilton	2	2	0	2	360
Herkimer	100	158	60	98	58,792
Jefferson	228	331	101	230	150,660
Lewis	16	19	8	11	11,605
Livingston	109	219	103	116	58,150
Madison	61	99	37	62	27,598
Monroe	4,369	9,615	5,109	4,506	2,560,247
Montgomery	83	192	107	85	54,089
Nassau	1,942	3,960	1,932	2,028	1,589,360
Niagara	824	1,676	810	866	384,807
Oneida	905	2,448	1,463	985	520,577
Onondaga	1,105	3,049	1,885	1,164	618,437
Ontario	158	247	92	155	110,571
Orange	806	1,885	1,033	852	681,334
Orleans	164	274	107	167	83,191
Oswego	292	612	299	313	156,459
Otsego	28	30	6	24	20,325
Putnam	23	24	1	23	31,181
Rensselaer	343	1,085	712	373	231,946
Rockland	400	818	389	429	273,421
St. Lawrence	298	543	223	320	149,620
Saratoga	44	44	1	43	46,878
Schenectady	452	1,220	744	476	368,332
Schoharie	16	20	4	16	10,664
Schuyler	38	72	26	46	18,957
Seneca	54	104	50	54	35,380
Steuben	186	372	183	189	106,954
Suffolk	2,336	4,488	2,044	2,444	2,613,571
Sullivan	153	296	134	162	122,264
Tioga	25	41	19	22	22,695
Tompkins	201	365	160	205	118,789
Ulster	531	988	437	551	365,158
Warren	33	38	6	32	28,704
Washington	27	39	10	29	31,524
Wayne	110	145	42	103	58,224
Westchester	2,376	4,640	2,178	2,462	2,362,046
Wyoming	26	41	12	29	15,633
Yates	21	28	7	21	13,166

Note: A breakout of Safety Net Assistance-FNP-Cash and Safety Net Assistance-FNP-Non-Cash data is not available for New York City.

\* May include otherwise Temporary Assistance for Needy Families eligible or otherwise Safety Net Assistance MOE eligible non-disabled two-parent cases.

Table 15  
**SAFETY NET ASSISTANCE-FNP-NON-CASH BY MAINTENANCE OF EFFORT STATUS**  
 Maintenance of Effort (MOE) vs. Non-Maintenance of Effort (Non-MOE)  
 Cases, Recipients, Children, Adults and Expenditures by Local District  
 October 2015

Local District	Maintenance of Effort (MOE)					Non-Maintenance of Effort (Non-MOE)*				
	Cases	Recipients	Children	Adults	Expenditures	Cases	Recipients	Children	Adults	Expenditures
New York State	See Note	See Note	See Note	See Note	See Note	See Note	See Note	See Note	See Note	See Note
New York City	See Note	See Note	See Note	See Note	See Note	See Note	See Note	See Note	See Note	See Note
Rest of State	9,936	35,209	24,939	10,270	\$8,321,753	16,445	21,241	4,040	17,201	\$10,128,000
Albany	324	1,214	881	333	287,146	363	507	123	384	227,616
Allegany	33	107	73	34	20,194	85	94	8	86	42,021
Broome	326	1,113	777	336	196,338	639	826	185	641	355,608
Cattaraugus	9	31	22	9	5,666	102	106	13	93	59,015
Cayuga	44	140	93	47	31,505	112	133	20	113	70,211
Chautauqua	347	1,185	804	381	220,691	394	547	110	437	181,032
Chemung	24	95	73	22	13,701	51	52	0	52	35,178
Chenango	8	26	18	8	4,042	33	36	2	34	17,454
Clinton	24	77	52	25	14,520	100	102	4	98	65,081
Columbia	29	103	74	29	17,484	87	98	11	87	60,311
Cortland	24	81	55	26	14,914	145	150	2	148	99,241
Delaware	0	0	0	0	0	18	18	0	18	12,362
Dutchess	61	209	145	64	42,154	189	216	40	176	140,030
Erie	1,459	5,364	3,881	1,483	923,359	2,146	3,039	752	2,287	977,052
Essex	2	10	7	3	2,063	9	9	0	9	10,886
Franklin	28	92	63	29	15,755	73	100	21	79	33,200
Fulton	2	6	4	2	1,841	36	41	4	37	29,579
Genesee	13	49	36	13	7,412	60	70	10	60	43,186
Greene	34	108	76	32	18,435	63	69	6	63	41,801
Hamilton	0	0	0	0	0	2	2	0	2	360
Herkimer	20	74	55	19	13,851	80	84	5	79	44,941
Jefferson	34	116	82	34	18,877	194	215	19	196	131,783
Lewis	1	4	3	1	848	15	15	5	10	10,757
Livingston	38	120	79	41	23,553	71	99	24	75	34,597
Madison	11	43	31	12	5,428	50	56	6	50	22,170
Monroe	1,912	6,730	4,748	1,982	1,367,082	2,457	2,885	361	2,524	1,193,165
Montgomery	37	129	90	39	23,513	46	63	17	46	30,576
Nassau	772	2,508	1,716	792	855,086	1,170	1,452	216	1,236	734,274
Niagara	272	959	679	280	142,950	552	717	131	586	241,857
Oneida	404	1,607	1,180	427	259,506	501	841	283	558	261,071
Onondaga	524	2,016	1,493	523	310,379	581	1,033	392	641	308,058
Ontario	36	118	82	36	23,146	122	129	10	119	87,425
Orange	353	1,246	881	365	341,403	453	639	152	487	339,931
Orleans	41	135	95	40	25,878	123	139	12	127	57,313
Oswego	98	333	230	103	59,455	194	279	69	210	97,004
Otsego	0	0	0	0	0	28	30	6	24	20,325
Putnam	1	2	1	1	830	22	22	0	22	30,351
Rensselaer	236	846	607	239	146,299	107	239	105	134	85,647
Rockland	79	289	208	81	59,655	321	529	181	348	213,766
St. Lawrence	74	229	151	78	36,577	224	314	72	242	113,043
Saratoga	0	0	0	0	0	44	44	1	43	46,878
Schenectady	225	865	635	230	207,247	227	355	109	246	161,085
Schoharie	2	6	4	2	898	14	14	0	14	9,766
Schuyler	8	26	17	9	3,790	30	46	9	37	15,167
Seneca	16	57	40	17	9,102	38	47	10	37	26,278
Steuben	68	241	165	76	44,335	118	131	18	113	62,619
Suffolk	680	2,516	1,797	719	1,191,705	1,656	1,972	247	1,725	1,421,866
Sullivan	43	151	107	44	26,945	110	145	27	118	95,319
Tioga	8	24	18	6	5,146	17	17	1	16	17,549
Tompkins	50	187	134	53	30,372	151	178	26	152	88,417
Ulster	160	536	375	161	146,815	371	452	62	390	218,343
Warren	2	7	6	1	1,086	31	31	0	31	27,618
Washington	3	9	5	4	2,969	24	30	5	25	28,555
Wayne	12	40	29	11	6,722	98	105	13	92	51,502
Westchester	919	3,005	2,045	960	1,088,346	1,457	1,635	133	1,502	1,273,700
Wyoming	4	18	12	6	3,467	22	23	0	23	12,166
Yates	2	7	5	2	1,272	19	21	2	19	11,894

Note: A breakout of Safety Net Assistance-FNP-Cash and Safety Net Assistance-FNP-Non-Cash data is not available for New York City.

\* The Non-MOE category includes otherwise Temporary Assistance for Needy Families eligible or otherwise Safety Net Assistance MOE eligible non-disabled two-parent cases.

Table 16  
**SUPPLEMENTAL NUTRITION ASSISTANCE PROGRAM**  
Households, Persons and Value of Supplemental Nutrition Assistance Program Benefits by Local District  
October 2015

Local District	Total			Temporary Assistance			Non-Temporary Assistance		
	Households	Persons	SNAP Benefits	Households	Persons	SNAP Benefits	Households	Persons	SNAP Benefits
New York State	1,646,999	2,996,649	\$418,872,190	676,201	1,024,881	\$157,578,901	970,798	1,971,768	\$261,293,289
New York City	948,935	1,694,576	249,559,161	442,687	675,155	105,659,525	506,248	1,019,421	143,899,636
Rest of State	698,064	1,302,073	169,313,029	233,514	349,726	51,919,376	464,550	952,347	117,393,653
Albany	19,815	36,940	4,753,193	6,691	10,268	1,518,349	13,124	26,672	3,234,844
Allegany	3,218	6,043	710,821	1,178	1,624	237,704	2,040	4,419	473,117
Broome	17,018	31,370	4,055,848	6,906	10,702	1,638,803	10,112	20,668	2,417,045
Cattaraugus	6,440	12,433	1,470,078	1,827	2,325	355,115	4,613	10,108	1,114,963
Cayuga	5,568	10,648	1,326,938	1,623	2,435	363,671	3,945	8,213	963,267
Chautauqua	13,901	26,473	3,431,991	4,557	7,503	1,096,573	9,344	18,970	2,335,418
Chemung	8,099	15,764	2,046,195	2,234	2,827	435,553	5,865	12,937	1,610,642
Chenango	3,803	7,385	879,611	1,111	1,414	212,281	2,692	5,971	667,330
Clinton	6,776	11,601	1,432,957	2,424	3,046	462,465	4,352	8,555	970,492
Columbia	3,732	6,342	820,338	1,317	1,783	273,803	2,415	4,559	546,535
Cortland	3,749	6,692	838,470	1,196	1,686	258,091	2,553	5,006	580,379
Delaware	3,171	6,199	738,613	851	1,023	150,057	2,320	5,176	588,556
Dutchess	12,955	22,779	3,000,442	3,745	4,721	730,413	9,210	18,058	2,270,029
Erie	83,885	156,079	20,482,477	29,254	47,613	7,103,568	54,631	108,466	13,378,909
Essex	2,003	3,576	440,140	686	765	118,455	1,317	2,811	321,685
Franklin	4,109	7,439	956,919	1,559	2,089	320,926	2,550	5,350	635,993
Fulton	4,828	8,856	1,089,795	1,412	1,666	272,278	3,416	7,190	817,517
Genesee	3,194	5,887	705,913	906	1,178	181,267	2,288	4,709	524,646
Greene	3,189	5,573	730,821	1,099	1,489	225,983	2,090	4,084	504,838
Hamilton	226	355	43,275	60	68	11,182	166	287	32,093
Herkimer	5,380	10,141	1,220,402	1,336	1,761	272,586	4,044	8,380	947,816
Jefferson	8,323	15,555	1,909,504	2,507	3,445	521,633	5,816	12,110	1,387,871
Lewis	1,827	3,462	391,965	427	522	73,535	1,400	2,940	318,430
Livingston	3,808	7,026	881,668	1,335	2,041	305,311	2,473	4,985	576,357
Madison	4,505	8,706	1,077,840	1,065	1,404	211,166	3,440	7,302	866,674
Monroe	66,830	122,860	16,394,361	27,204	44,320	6,535,961	39,626	78,540	9,858,400
Montgomery	4,722	9,535	1,205,009	1,502	2,272	337,772	3,220	7,263	867,237
Nassau	40,385	64,866	8,467,528	16,379	22,608	3,336,249	24,006	42,258	5,131,279
Niagara	17,750	31,686	4,118,558	5,909	8,783	1,337,897	11,841	22,903	2,780,661
Oneida	20,208	40,879	5,133,710	8,008	14,071	2,018,247	12,200	26,808	3,115,463
Onondaga	38,679	73,795	9,562,676	13,398	22,759	3,261,627	25,281	51,036	6,301,049
Ontario	5,392	9,676	1,189,877	1,726	2,347	363,297	3,666	7,329	826,580
Orange	19,861	46,586	6,047,722	6,099	9,183	1,339,678	13,762	37,403	4,708,044
Orleans	3,137	6,042	724,760	1,042	1,553	236,076	2,095	4,489	488,684
Oswego	9,525	19,598	2,417,144	3,015	4,963	727,237	6,510	14,635	1,689,907
Otsego	3,220	5,944	705,944	877	976	153,362	2,343	4,968	552,582
Putnam	1,685	2,648	341,991	521	568	84,740	1,164	2,080	257,251
Rensselaer	8,887	17,640	2,197,589	3,390	6,072	838,241	5,497	11,568	1,359,348
Rockland	16,959	47,100	6,105,499	4,048	5,450	831,852	12,911	41,650	5,273,647
St. Lawrence	8,286	16,063	1,955,706	3,023	4,298	628,927	5,263	11,765	1,326,779
Saratoga	8,450	14,676	1,788,143	1,915	2,107	338,718	6,535	12,569	1,449,425
Schenectady	12,842	24,052	3,205,048	4,676	7,158	1,047,882	8,166	16,894	2,157,166
Schoharie	2,025	3,712	456,632	531	672	105,363	1,494	3,040	351,269
Schuyler	1,239	2,378	286,860	355	553	83,444	884	1,825	203,416
Seneca	1,781	3,336	416,133	596	862	124,877	1,185	2,474	291,256
Steuben	5,938	11,804	1,374,247	2,004	2,845	417,774	3,934	8,959	956,473
Suffolk	75,321	128,262	17,826,977	21,641	30,204	4,555,847	53,680	98,058	13,271,130
Sullivan	6,444	12,772	1,657,365	1,942	2,646	383,242	4,502	10,126	1,274,123
Tioga	3,072	6,206	719,761	801	1,091	159,471	2,271	5,115	560,290
Tompkins	5,003	8,811	1,135,255	1,517	2,137	324,173	3,486	6,674	811,082
Ulster	11,826	20,802	2,760,274	4,142	5,935	910,021	7,684	14,867	1,850,253
Warren	3,911	7,002	845,229	1,094	1,263	197,704	2,817	5,739	647,525
Washington	3,970	7,537	902,680	1,029	1,335	199,307	2,941	6,202	703,373
Wayne	5,581	10,291	1,229,780	1,697	2,187	338,866	3,884	8,104	890,914
Westchester	48,577	86,612	12,055,560	15,233	21,996	3,181,971	33,344	64,616	8,873,589
Wyoming	1,643	2,956	337,318	515	648	97,445	1,128	2,308	239,873
Yates	1,393	2,622	311,479	379	466	71,340	1,014	2,156	240,139

Note: Supplemental Nutrition Assistance Program households containing only Supplemental Security Income recipients or a mix of Temporary Assistance and Supplemental Security Income recipients are counted as Temporary Assistance.

Table 17  
**SUPPLEMENTAL SECURITY INCOME**  
 Recipients, Total Program Expenditures and Federal and State Shares, by Local District  
 October 2015

Local District	Recipients	Expenditures		
		Total	Federal	State
New York State*	707,415	\$419,683,035	\$368,078,043	\$51,604,992
New York City	426,305	255,528,123	225,950,486	29,577,637
Rest of State	276,627	162,110,067	140,722,119	21,387,948
Albany	7,495	4,409,218	3,896,552	512,666
Allegany	1,583	884,738	770,695	114,043
Broome	7,315	4,430,261	3,970,365	459,896
Cattaraugus	2,621	1,459,901	1,273,509	186,392
Cayuga	1,986	1,149,433	986,650	162,783
Chautauqua	5,099	2,956,259	2,590,060	366,199
Chemung	3,538	2,008,364	1,765,108	243,256
Chenango	1,626	886,747	785,458	101,289
Clinton	3,175	1,917,803	1,686,709	231,094
Columbia	1,692	1,035,769	852,466	183,303
Cortland	1,298	750,241	653,978	96,263
Delaware	1,330	724,144	621,133	103,011
Dutchess	6,004	3,522,556	2,890,367	632,189
Erie	30,509	18,389,742	16,206,477	2,183,265
Essex	1,095	628,921	496,402	132,519
Franklin	1,835	1,116,071	958,732	157,339
Fulton	2,294	1,340,779	1,138,088	202,691
Genesee	1,310	769,963	649,114	120,849
Greene	1,514	829,069	718,367	110,702
Hamilton	66	38,953	35,096	3,857
Herkimer	1,809	1,009,860	871,632	138,228
Jefferson	3,034	1,720,400	1,489,029	231,371
Lewis	649	346,446	305,244	41,202
Livingston	1,310	796,652	723,045	73,607
Madison	1,438	831,161	728,579	102,582
Monroe	27,787	17,280,444	15,356,302	1,924,142
Montgomery	2,073	1,205,653	1,048,325	157,328
Nassau	19,198	10,771,739	9,116,480	1,655,259
Niagara	6,399	3,836,712	3,362,677	474,035
Oneida	8,876	5,234,292	4,635,715	598,577
Onondaga	15,455	9,545,880	8,572,698	973,182
Ontario	2,085	1,132,361	988,530	143,831
Orange	7,433	4,337,720	3,761,594	576,126
Orleans	1,051	620,015	552,301	67,714
Oswego	3,563	2,093,067	1,892,054	201,013
Otsego	1,545	883,096	738,053	145,043
Putnam	919	485,142	396,772	88,370
Rensselaer	4,851	2,963,323	2,561,074	402,249
Rockland	5,595	3,225,370	2,487,456	737,914
St. Lawrence	4,069	2,411,629	2,151,142	260,487
Saratoga	3,164	1,703,522	1,476,539	226,983
Schenectady	5,947	3,631,179	3,230,075	401,104
Schoharie	738	396,441	323,136	73,305
Schuyler	475	255,522	208,372	47,150
Seneca	841	470,283	412,212	58,071
Steuben	3,224	1,818,450	1,616,587	201,863
Suffolk	23,255	13,265,333	11,143,180	2,122,153
Sullivan	2,810	1,550,996	1,252,020	298,976
Tioga	1,268	708,056	628,111	79,945
Tompkins	1,718	974,892	832,380	142,512
Ulster	4,546	2,554,415	2,174,987	379,428
Warren	1,755	954,642	822,751	131,891
Washington	1,726	950,935	827,560	123,375
Wayne	2,310	1,416,222	1,273,972	142,250
Westchester	19,062	10,747,988	9,179,233	1,568,755
Wyoming	708	406,882	360,429	46,453
Yates	556	324,415	276,547	47,868
Mental Hygiene	4,483	2,044,845	1,405,438	639,407

\* Only New York State includes Mental Hygiene

Table 18  
**SUPPLEMENTAL SECURITY INCOME**  
 Recipients by Living Arrangement and Location  
 October 2015

Living Arrangement	New York State	New York City	Rest of State	Mental Hygiene
Living Alone	337,582	219,952	117,626	4
Living With Others	278,950	161,734	117,205	11
Living in Household of Another	31,474	18,720	12,754	0
Congregate Care Level 1	2,467	289	554	1,624
Congregate Care Level 2	26,446	9,652	15,975	819
Congregate Care Level 3	12,744	6,440	6,304	0
Title XIX Institution	12,693	7,735	4,400	558
Other*	5,059	1,816	1,809	1,434
<b>Total</b>	<b>707,415</b>	<b>426,338</b>	<b>276,627</b>	<b>4,450</b>

Table 19  
**SUPPLEMENTAL SECURITY INCOME**  
 Recipients by Living Arrangement and Category of Assistance  
 October 2015

Living Arrangement	Total	Category of Assistance		
		Aged	Blind	Disabled
Living Alone	337,582	95,730	1,265	240,587
Living With Others	278,950	25,538	1,257	252,155
Living in Household of Another	31,474	8,515	236	22,723
Congregate Care Level 1	2,467	272	13	2,182
Congregate Care Level 2	26,446	1,574	89	24,783
Congregate Care Level 3	12,744	5,041	32	7,671
Title XIX Institution & Other*	17,752	2,649	94	15,009
<b>Total</b>	<b>707,415</b>	<b>139,319</b>	<b>2,986</b>	<b>565,110</b>

\* "Other" includes recipients either a) residing in a private medical facility and Medicaid is paying for less than 50% of the cost of care, b) residing in certain publicly operated residential facilities serving 16 or fewer residents, or c) residing in a public emergency shelter for six calendar months during a nine month period. Such cases receive no state Supplemental Security Income supplement.

Table 20  
CHILD SUPPORT COLLECTIONS (IV-D)  
October 2015

Local District	Total	Current Assistance	Former Assistance	Never Assistance
New York State	\$169,356,875.90	\$6,415,727.82	\$84,927,786.85	\$78,013,361.19
New York City	69,874,718.06	3,091,575.04	36,178,061.75	30,605,081.27
Rest of State	99,482,157.80	3,324,152.78	48,749,725.10	47,408,279.92
Albany	2,649,459.10	75,119.98	1,135,077.15	1,439,261.97
Allegany	553,920.27	24,647.55	366,725.43	162,547.29
Broome	1,482,499.18	87,508.60	797,377.43	597,613.15
Cattaraugus	969,954.81	28,117.97	581,026.18	360,810.66
Cayuga	815,204.60	37,148.28	480,695.32	297,361.00
Chautauqua	1,280,240.04	78,135.85	816,843.34	385,260.85
Chemung	831,380.17	32,406.78	507,956.41	291,016.98
Chenango	483,388.24	17,984.90	286,405.16	178,998.18
Clinton	967,164.15	43,314.44	462,923.80	460,925.91
Columbia	537,370.95	24,520.05	295,859.04	216,991.86
Cortland	442,408.59	19,181.89	269,815.08	153,411.62
Delaware	404,143.54	20,556.01	268,899.58	114,687.95
Dutchess	2,898,347.96	59,060.17	1,099,635.51	1,739,652.28
Erie	7,149,799.43	337,543.51	4,007,689.74	2,804,566.18
Essex	328,942.33	10,534.69	171,824.38	146,583.26
Franklin	530,408.77	17,847.40	276,326.96	236,234.41
Fulton	608,931.08	17,730.44	414,325.91	176,874.73
Genesee	580,684.50	14,300.63	309,076.22	257,307.65
Greene	436,638.24	14,167.10	232,717.91	189,753.23
Hamilton	27,320.67	656.07	15,493.30	11,171.30
Herkimer	539,629.29	22,304.29	310,197.39	207,127.61
Jefferson	1,444,924.65	52,368.05	620,315.20	772,241.40
Lewis	383,554.22	8,400.89	253,868.55	121,284.78
Livingston	675,175.83	33,559.05	390,868.11	250,748.67
Madison	547,559.83	20,269.45	309,829.78	217,460.60
Monroe	6,580,268.94	281,574.52	3,622,083.20	2,676,611.22
Montgomery	576,474.89	35,410.86	379,701.38	161,362.65
Nassau	9,391,390.69	173,999.57	3,533,847.82	5,683,543.30
Niagara	1,922,653.76	100,907.92	1,218,519.64	603,226.20
Oneida	1,756,167.84	98,939.25	1,040,340.56	616,888.03
Onondaga	4,178,447.81	148,975.00	2,397,935.35	1,631,537.46
Ontario	1,116,363.92	44,920.64	598,258.97	473,184.31
Orange	3,893,911.18	89,525.12	1,539,679.33	2,264,706.73
Orleans	405,935.60	21,091.16	249,985.61	134,858.83
Oswego	1,279,261.98	51,529.69	763,549.70	464,182.59
Otsego	435,195.73	8,798.70	209,468.68	216,928.35
Putnam	825,770.69	7,743.16	262,734.39	555,293.14
Rensselaer	1,794,182.20	91,387.39	781,562.10	921,232.71
Rockland	2,514,421.57	53,256.92	1,039,162.54	1,422,002.11
St. Lawrence	1,160,986.29	41,389.61	741,685.86	377,910.82
Saratoga	1,874,553.48	25,233.15	804,424.57	1,044,895.76
Schenectady	1,551,823.98	50,562.38	719,739.89	781,521.71
Schoharie	365,526.31	11,311.97	218,022.38	136,191.96
Schuyler	194,951.26	8,053.31	142,161.62	44,736.33
Seneca	348,155.34	13,597.22	184,585.23	149,972.89
Steuben	1,004,709.38	42,650.55	588,301.83	373,757.00
Suffolk	14,856,721.96	358,101.17	6,840,429.19	7,658,191.60
Sullivan	779,260.84	26,266.70	394,950.19	358,043.95
Tioga	495,190.07	23,609.38	288,664.03	182,916.66
Tompkins	655,867.87	34,006.15	329,621.64	292,240.08
Ulster	1,721,855.91	91,332.61	876,125.00	754,398.30
Warren	828,735.54	20,054.31	432,651.82	376,029.41
Washington	729,415.76	21,826.62	393,055.42	314,533.72
Wayne	981,150.67	27,727.01	499,206.86	454,216.80
Westchester	7,052,478.45	195,171.22	2,645,329.04	4,211,978.19
Wyoming	457,124.91	19,283.18	220,416.97	217,424.76
Yates	184,152.54	8,532.30	111,751.41	63,868.83

Table 21  
**AGGREGATE CLAIMS**  
**TOTAL TEMPORARY ASSISTANCE**  
Family Assistance and Safety Net Assistance  
October 2015

Month	New York State			New York City			Rest of State		
	Recipients	Net Expenditures	Monthly Average Payment	Recipients	Net Expenditures	Monthly Average Payment	Recipients	Net Expenditures	Monthly Average Payment
November 2013	568,983	\$218,665,849	\$384.31	340,896	\$151,876,636	\$445.52	228,087	\$66,789,213	\$292.82
December 2013	566,424	\$289,627,659	\$511.33	339,513	\$215,151,686	\$633.71	226,911	\$74,475,973	\$328.22
January 2014	560,991	\$214,034,507	\$381.53	333,708	\$146,731,005	\$439.70	227,283	\$67,303,502	\$296.12
February 2014	561,525	\$210,098,286	\$374.16	333,162	\$140,749,161	\$422.46	228,363	\$69,349,125	\$303.68
March 2014	566,456	\$228,209,047	\$402.87	334,732	\$155,317,544	\$464.01	231,724	\$72,891,503	\$314.56
April 2014	565,463	\$226,859,192	\$401.19	332,074	\$151,598,291	\$456.52	233,389	\$75,260,901	\$322.47
May 2014	564,612	\$219,689,737	\$389.10	330,872	\$144,710,332	\$437.36	233,740	\$74,979,405	\$320.78
June 2014	563,201	\$223,759,118	\$397.30	331,315	\$151,675,137	\$457.80	231,886	\$72,083,981	\$310.86
July 2014	562,676	\$213,011,582	\$378.57	331,407	\$143,826,733	\$433.99	231,269	\$69,184,849	\$299.15
August 2014	565,719	\$204,522,862	\$361.53	336,383	\$135,173,840	\$401.85	229,336	\$69,349,022	\$302.39
September 2014	567,809	\$227,653,150	\$400.93	339,380	\$158,726,208	\$467.69	228,429	\$68,926,942	\$301.74
October 2014	571,842	\$243,254,336	\$425.39	339,804	\$170,325,629	\$501.25	232,038	\$72,928,707	\$314.30
November 2014	566,688	\$206,226,591	\$363.92	341,498	\$142,024,104	\$415.89	225,190	\$64,202,487	\$285.10
December 2014	573,328	\$295,765,651	\$515.88	344,154	\$219,794,242	\$638.65	229,174	\$75,971,409	\$331.50
January 2015	569,551	\$253,499,500	\$445.09	343,400	\$184,987,118	\$538.69	226,151	\$68,512,382	\$302.95
February 2015	570,637	\$219,308,988	\$384.32	346,155	\$152,246,046	\$439.82	224,482	\$67,062,942	\$298.75
March 2015	577,132	\$237,139,928	\$410.89	349,639	\$162,425,660	\$464.55	227,493	\$74,714,268	\$328.42
April 2015	575,508	\$230,158,671	\$399.92	349,039	\$158,568,220	\$454.30	226,469	\$71,590,451	\$316.12
May 2015	573,167	\$219,539,899	\$383.03	350,112	\$149,863,337	\$428.04	223,055	\$69,676,562	\$312.37
June 2015	573,775	\$221,456,690	\$385.96	351,701	\$152,451,203	\$433.47	222,074	\$69,005,487	\$310.73
July 2015	573,450	\$219,014,645	\$381.92	352,855	\$150,673,837	\$427.01	220,595	\$68,340,808	\$309.80
August 2015	572,799	\$204,661,492	\$357.30	355,100	\$139,880,462	\$393.92	217,699	\$64,781,030	\$297.57
September 2015	573,074	\$213,196,829	\$372.02	357,047	\$147,626,047	\$413.46	216,027	\$65,570,782	\$303.53
October 2015	578,030	\$222,341,503	\$384.65	361,421	\$157,391,072	\$435.48	216,609	\$64,950,431	\$299.85

Note: Data pursuant to a New York State Legislative mandate S. 6057-B/A. 9557-B, Chapter 57, L. 2004.

Based on local district claims submitted on claims Schedules A and C. Includes reimbursable expenditures for basic assistance, rent supplements, family shelters, domestic violence shelters, security deposits, transitional services, diversion transportation, diversion payments, and other non-assistance. These claims are net of cancellations and refunds, and include any reconciliations and supplemental claims applied to the month after initial expenditure reporting is done. Thus, these data differ from the expenditure data presented elsewhere in this document, which are derived from original payment issuance activity during the month, net of cancellations and refunds in that month.

District claiming activity for recent months is generally not complete before the statutorily required due date for this report. Thus, claims for recent months may appear substantially below those for earlier months. Claims tables in future months of this report will continue to include the historical periods above, adjusted for claiming activity occurring subsequent to this report.

Table 22  
**AGGREGATE CLAIMS**  
**FEDERALLY PARTICIPATING - TANF**  
**Family Assistance-FP and Safety Net Assistance-FP**  
**October 2015**

Month	New York State			New York City			Rest of State		
	Recipients	Net Expenditures	Monthly Average Payment	Recipients	Net Expenditures	Monthly Average Payment	Recipients	Net Expenditures	Monthly Average Payment
November 2013	261,958	\$96,127,899	\$366.96	141,744	\$63,281,911	\$446.45	120,214	\$32,845,988	\$273.23
December 2013	260,468	\$133,229,448	\$511.50	141,437	\$95,747,960	\$676.97	119,031	\$37,481,488	\$314.89
January 2014	256,124	\$92,822,352	\$362.41	137,459	\$59,856,956	\$435.45	118,665	\$32,965,396	\$277.80
February 2014	255,541	\$89,422,412	\$349.93	136,833	\$56,115,950	\$410.11	118,708	\$33,306,462	\$280.57
March 2014	255,898	\$100,952,462	\$394.50	136,966	\$65,683,012	\$479.56	118,932	\$35,269,450	\$296.55
April 2014	253,936	\$97,135,029	\$382.52	134,985	\$61,105,554	\$452.68	118,951	\$36,029,475	\$302.89
May 2014	253,505	\$92,440,031	\$364.65	134,113	\$57,980,291	\$432.32	119,392	\$34,459,740	\$288.63
June 2014	253,465	\$101,583,874	\$400.78	134,148	\$67,116,281	\$500.32	119,317	\$34,467,593	\$288.87
July 2014	252,643	\$86,880,628	\$343.89	133,462	\$53,597,492	\$401.59	119,181	\$33,283,136	\$279.27
August 2014	254,875	\$83,867,022	\$329.05	136,240	\$50,504,032	\$370.70	118,635	\$33,362,990	\$281.22
September 2014	254,656	\$99,974,630	\$392.59	136,630	\$66,244,980	\$484.85	118,026	\$33,729,650	\$285.78
October 2014	255,720	\$104,840,640	\$409.98	136,355	\$69,873,173	\$512.44	119,365	\$34,967,467	\$292.95
November 2014	255,842	\$86,424,571	\$337.80	139,293	\$55,125,642	\$395.75	116,549	\$31,298,929	\$268.55
December 2014	254,126	\$113,437,440	\$446.38	137,103	\$77,034,245	\$561.87	117,023	\$36,403,195	\$311.08
January 2015	251,342	\$107,431,110	\$427.43	136,237	\$74,910,192	\$549.85	115,105	\$32,520,918	\$282.53
February 2015	250,234	\$88,902,237	\$355.28	136,216	\$57,298,669	\$420.65	114,018	\$31,603,568	\$277.18
March 2015	251,794	\$101,399,251	\$402.71	137,283	\$66,515,785	\$484.52	114,511	\$34,883,466	\$304.63
April 2015	248,893	\$92,265,661	\$370.70	135,267	\$59,547,538	\$440.22	113,626	\$32,718,123	\$287.95
May 2015	248,133	\$89,716,201	\$361.56	136,046	\$57,289,140	\$421.10	112,087	\$32,427,061	\$289.30
June 2015	247,686	\$95,647,712	\$386.17	135,971	\$63,269,004	\$465.31	111,715	\$32,378,708	\$289.83
July 2015	247,654	\$87,314,414	\$352.57	136,308	\$55,250,732	\$405.34	111,346	\$32,063,682	\$287.96
August 2015	246,643	\$80,032,925	\$324.49	136,286	\$49,256,675	\$361.42	110,357	\$30,776,250	\$278.88
September 2015	247,329	\$84,380,228	\$341.17	137,716	\$53,158,653	\$386.00	109,613	\$31,221,575	\$284.83
October 2015	249,057	\$88,574,623	\$355.64	138,939	\$57,562,313	\$414.30	110,118	\$31,012,310	\$281.63

Note: Data pursuant to a New York State Legislative mandate S. 6057-B/A. 9557-B, Chapter 57, L. 2004.

Based on local district claims submitted on claims Schedules A and C. Includes reimbursable expenditures for basic assistance, rent supplements, family shelters, domestic violence shelters, security deposits, transitional services, diversion transportation, diversion payments, and other non-assistance. These claims are net of cancellations and refunds, and include any reconciliations and supplemental claims applied to the month after initial expenditure reporting is done. Thus, these data differ from the expenditure data presented elsewhere in this document, which are derived from original payment issuance activity during the month, net of cancellations and refunds in that month.

District claiming activity for recent months is generally not complete before the statutorily required due date for this report. Thus, claims for recent months may appear substantially below those for earlier months. Claims tables in future months of this report will continue to include the historical periods above, adjusted for claiming activity occurring subsequent to this report.



Table 23  
**AGGREGATE CLAIMS**  
**FEDERALLY NON-PARTICIPATING**  
Safety Net Assistance-FNP Maintenance of Effort  
October 2015

Month	New York State			New York City			Rest of State		
	Recipients	Net Expenditures	Monthly Average Payment	Recipients	Net Expenditures	Monthly Average Payment	Recipients	Net Expenditures	Monthly Average Payment
November 2013	118,437	\$34,340,355	\$289.95	80,274	\$25,654,665	\$319.59	38,163	\$8,685,690	\$227.59
December 2013	117,452	\$51,690,718	\$440.10	78,754	\$42,298,783	\$537.10	38,698	\$9,391,935	\$242.70
January 2014	116,278	\$34,146,338	\$293.66	77,255	\$25,344,805	\$328.07	39,023	\$8,801,533	\$225.55
February 2014	116,505	\$31,249,687	\$268.23	77,327	\$22,124,863	\$286.12	39,178	\$9,124,824	\$232.91
March 2014	117,670	\$41,128,302	\$349.52	78,426	\$31,555,885	\$402.37	39,244	\$9,572,417	\$243.92
April 2014	114,869	\$35,803,039	\$311.69	75,862	\$25,646,627	\$338.07	39,007	\$10,156,412	\$260.37
May 2014	114,478	\$33,507,779	\$292.70	75,265	\$24,181,272	\$321.28	39,213	\$9,326,507	\$237.84
June 2014	114,786	\$38,980,622	\$339.59	75,107	\$29,713,919	\$395.62	39,679	\$9,266,703	\$233.54
July 2014	114,537	\$32,490,337	\$283.67	74,604	\$23,371,909	\$313.28	39,933	\$9,118,428	\$228.34
August 2014	116,548	\$29,347,170	\$251.80	77,266	\$20,625,986	\$266.95	39,282	\$8,721,184	\$222.01
September 2014	117,457	\$39,815,706	\$338.98	77,600	\$30,949,827	\$398.84	39,857	\$8,865,879	\$222.44
October 2014	117,954	\$36,920,579	\$313.01	77,641	\$27,254,967	\$351.04	40,313	\$9,665,612	\$239.76
November 2014	116,448	\$31,064,132	\$266.76	76,629	\$22,565,979	\$294.48	39,819	\$8,498,153	\$213.42
December 2014	121,796	\$57,905,193	\$475.43	80,895	\$48,437,391	\$598.77	40,901	\$9,467,802	\$231.48
January 2015	120,097	\$43,742,063	\$364.22	79,585	\$34,571,287	\$434.39	40,512	\$9,170,776	\$226.37
February 2015	122,369	\$34,736,336	\$283.87	82,108	\$25,627,840	\$312.12	40,261	\$9,108,496	\$226.24
March 2015	121,592	\$42,816,410	\$352.13	81,214	\$32,916,088	\$405.30	40,378	\$9,900,322	\$245.19
April 2015	121,779	\$36,466,493	\$299.45	81,603	\$26,620,651	\$326.22	40,176	\$9,845,842	\$245.07
May 2015	122,015	\$33,591,105	\$275.30	82,123	\$24,140,499	\$293.96	39,892	\$9,450,606	\$236.90
June 2015	122,737	\$40,128,038	\$326.94	82,813	\$31,055,912	\$375.01	39,924	\$9,072,126	\$227.23
July 2015	122,406	\$34,354,172	\$280.66	82,218	\$25,254,747	\$307.17	40,188	\$9,099,425	\$226.42
August 2015	125,311	\$30,740,111	\$245.31	85,637	\$21,965,870	\$256.50	39,674	\$8,774,241	\$221.16
September 2015	124,711	\$37,841,325	\$303.43	85,244	\$28,831,262	\$338.22	39,467	\$9,010,063	\$228.29
October 2015	125,581	\$33,787,873	\$269.05	86,021	\$24,620,067	\$286.21	39,560	\$9,167,806	\$231.74

Note: Data pursuant to a New York State Legislative mandate S. 6057-B/A. 9557-B, Chapter 57, L. 2004.

Based on local district claims submitted on claims Schedules A and C. Includes reimbursable expenditures for basic assistance, rent supplements, family shelters, domestic violence shelters, security deposits, transitional services, diversion transportation, diversion payments, and other non-assistance. These claims are net of cancellations and refunds, and include any reconciliations and supplemental claims applied to the month after initial expenditure reporting is done. Thus, these data differ from the expenditure data presented elsewhere in this document, which are derived from original payment issuance activity during the month, net of cancellations and refunds in that month.

District claiming activity for recent months is generally not complete before the statutorily required due date for this report. Thus, claims for recent months may appear substantially below those for earlier months. Claims tables in future months of this report will continue to include the historical periods above, adjusted for claiming activity occurring subsequent to this report.

Table 24  
**AGGREGATE CLAIMS**  
**FEDERALLY NON-PARTICIPATING**  
Safety Net Assistance-FNP and Family Assistance-FNP Non-Maintenance of Effort  
October 2015

Month	New York State			New York City			Rest of State		
	Recipients	Net Expenditures	Monthly Average Payment	Recipients	Net Expenditures	Monthly Average Payment	Recipients	Net Expenditures	Monthly Average Payment
November 2013	188,588	\$88,197,595	\$467.67	118,878	\$62,940,060	\$529.45	69,710	\$25,257,535	\$362.32
December 2013	188,504	\$104,707,493	\$555.47	119,322	\$77,104,943	\$646.19	69,182	\$27,602,550	\$398.98
January 2014	188,589	\$87,065,817	\$461.67	118,994	\$61,529,244	\$517.08	69,595	\$25,536,573	\$366.93
February 2014	189,479	\$89,426,187	\$471.96	119,002	\$62,508,348	\$525.27	70,477	\$26,917,839	\$381.94
March 2014	192,888	\$86,128,283	\$446.52	119,340	\$58,078,647	\$486.67	73,548	\$28,049,636	\$381.38
April 2014	196,658	\$93,921,124	\$477.59	121,227	\$64,846,110	\$534.91	75,431	\$29,075,014	\$385.45
May 2014	196,629	\$93,741,927	\$476.75	121,494	\$62,548,769	\$514.83	75,135	\$31,193,158	\$415.16
June 2014	194,950	\$83,194,622	\$426.75	122,060	\$54,844,937	\$449.33	72,890	\$28,349,685	\$388.94
July 2014	195,496	\$93,640,617	\$478.99	123,341	\$66,857,332	\$542.05	72,155	\$26,783,285	\$371.19
August 2014	194,296	\$91,308,670	\$469.95	122,877	\$64,043,822	\$521.20	71,419	\$27,264,848	\$381.76
September 2014	195,696	\$87,862,814	\$448.98	125,150	\$61,531,401	\$491.66	70,546	\$26,331,413	\$373.25
October 2014	198,168	\$101,493,117	\$512.16	125,808	\$73,197,489	\$581.82	72,360	\$28,295,628	\$391.04
November 2014	194,398	\$88,737,888	\$456.48	125,576	\$64,332,483	\$512.30	68,822	\$24,405,405	\$354.62
December 2014	197,406	\$124,423,018	\$630.29	126,156	\$94,322,606	\$747.67	71,250	\$30,100,412	\$422.46
January 2015	198,112	\$102,326,327	\$516.51	127,578	\$75,505,639	\$591.84	70,534	\$26,820,688	\$380.25
February 2015	198,034	\$95,670,415	\$483.10	127,831	\$69,319,537	\$542.27	70,203	\$26,350,878	\$375.35
March 2015	203,746	\$92,924,267	\$456.08	131,142	\$62,993,787	\$480.35	72,604	\$29,930,480	\$412.24
April 2015	204,836	\$101,426,517	\$495.16	132,169	\$72,400,031	\$547.78	72,667	\$29,026,486	\$399.45
May 2015	203,019	\$96,232,593	\$474.01	131,943	\$68,433,698	\$518.66	71,076	\$27,798,895	\$391.12
June 2015	203,352	\$85,680,940	\$421.34	132,917	\$58,126,287	\$437.31	70,435	\$27,554,653	\$391.21
July 2015	203,390	\$97,346,059	\$478.62	134,329	\$70,168,358	\$522.36	69,061	\$27,177,701	\$393.53
August 2015	200,845	\$93,888,456	\$467.47	133,177	\$68,657,917	\$515.54	67,668	\$25,230,539	\$372.86
September 2015	201,034	\$90,975,276	\$452.54	134,087	\$65,636,132	\$489.50	66,947	\$25,339,144	\$378.50
October 2015	203,392	\$99,979,007	\$491.56	136,461	\$75,208,692	\$551.14	66,931	\$24,770,315	\$370.09

Note: Data pursuant to a New York State Legislative mandate S. 6057-B/A. 9557-B, Chapter 57, L. 2004.

Based on local district claims submitted on claims Schedules A and C. Includes reimbursable expenditures for basic assistance, rent supplements, family shelters, domestic violence shelters, security deposits, transitional services, diversion transportation, diversion payments, and other non-assistance. These claims are net of cancellations and refunds, and include any reconciliations and supplemental claims applied to the month after initial expenditure reporting is done. Thus, these data differ from the expenditure data presented elsewhere in this document, which are derived from original payment issuance activity during the month, net of cancellations and refunds in that month.

District claiming activity for recent months is generally not complete before the statutorily required due date for this report. Thus, claims for recent months may appear substantially below those for earlier months. Claims tables in future months of this report will continue to include the historical periods above, adjusted for claiming activity occurring subsequent to this report.

Table 25  
HOME ENERGY ASSISTANCE PROGRAM\*  
Number and Dollar Amount of Benefits Authorized and Administrative Allocations - Federal Fiscal Year to Date  
October 2015

Local District	Benefits Authorized		Administrative Allocations
	Number	Dollar Amount	
New York State	505,303	\$130,985,799	\$18,062,458
New York City	0	0	3,856,659
Rest of State	505,303	130,985,799	14,205,799
Albany	15,726	3,263,556	250,974
Allegany	2,474	979,454	137,588
Broome	12,620	3,436,034	358,933
Cattaraugus	5,934	2,068,893	228,985
Cayuga	4,246	1,444,485	160,390
Chautauqua	10,893	3,524,267	339,091
Chemung	6,425	1,527,646	161,127
Chenango	3,044	1,260,565	160,963
Clinton	5,405	2,424,080	284,412
Columbia	3,031	940,585	108,980
Cortland	2,724	794,378	102,844
Delaware	3,075	1,286,991	146,412
Dutchess	10,397	2,228,562	236,691
Erie	66,766	18,029,457	2,452,379
Essex	1,680	691,171	85,157
Franklin	3,651	1,464,829	197,927
Fulton	3,831	1,382,857	181,736
Genesee	2,594	751,441	79,504
Greene	2,787	1,045,113	134,093
Hamilton	223	85,812	11,271
Herkimer	4,664	1,609,822	189,867
Jefferson	6,629	2,132,471	221,034
Lewis	1,446	670,228	87,498
Livingston	2,973	1,061,227	108,637
Madison	3,361	1,172,509	149,260
Monroe	50,434	10,805,443	765,529
Montgomery	3,806	1,268,943	147,912
Nassau	19,963	2,635,847	196,084
Niagara	14,464	3,793,996	397,195
Oneida	15,779	4,563,580	582,647
Onondaga	28,281	6,685,963	556,319
Ontario	4,536	1,237,946	130,458
Orange	12,655	2,899,772	349,006
Orleans	2,239	876,790	97,764
Oswego	6,829	2,645,329	228,635
Otsego	2,849	1,159,612	152,672
Putnam	1,339	334,730	36,006
Rensselaer	7,175	1,927,212	194,429
Rockland	11,652	2,024,888	169,503
St. Lawrence	6,937	2,684,377	362,124
Saratoga	6,489	2,294,429	274,108
Schenectady	9,109	2,248,463	167,500
Schoharie	1,744	776,514	95,033
Schuyler	1,070	469,780	60,309
Seneca	1,489	421,464	62,954
Steuben	5,384	1,899,703	261,532
Suffolk	35,534	8,898,948	803,627
Sullivan	4,567	1,297,087	189,980
Tioga	2,562	1,127,089	128,346
Tompkins	4,196	966,624	105,197
Ulster	10,165	2,871,070	374,540
Warren	3,504	1,217,169	138,382
Washington	3,151	1,312,398	142,029
Wayne	4,548	1,586,830	124,891
Westchester	33,411	1,753,872	221,201
Wyoming	1,667	611,426	61,247
Yates	1,176	412,072	52,887

\* Please Note: The 2016 Home Energy Assistance Program Federal Fiscal Year is October 1, 2015 through September 30, 2016.

Table 26  
**HOME ENERGY ASSISTANCE PROGRAM - NON-EMERGENCY\***  
 Number, Total Dollar Amount and Average Dollar Amount of Benefits Authorized - Federal Fiscal Year to Date  
 October 2015

Local District	Autopay			Regular Non-Autopay		
	Benefits Authorized	Dollar Amount Authorized	Average Dollar Amount	Benefits Authorized	Dollar Amount Authorized	Average Dollar Amount
New York State	464,852	\$112,403,982	\$242	40,451	\$18,581,817	\$459
New York City	0	0	0	0	0	0
Rest of State	464,852	112,403,982	242	40,451	18,581,817	459
Albany	15,052	2,982,829	198	674	280,727	417
Allegany	2,237	851,840	381	237	127,614	538
Broome	11,491	2,933,286	255	1,129	502,748	445
Cattaraugus	5,038	1,655,615	329	896	413,278	461
Cayuga	3,727	1,196,242	321	519	248,243	478
Chautauqua	9,529	2,952,651	310	1,364	571,616	419
Chemung	5,774	1,259,473	218	651	268,173	412
Chenango	2,488	949,732	382	556	310,833	559
Clinton	4,740	2,053,718	433	665	370,362	557
Columbia	2,880	864,449	300	151	76,136	504
Cortland	2,542	708,458	279	182	85,920	472
Delaware	2,415	922,381	382	660	364,610	552
Dutchess	9,949	2,000,531	201	448	228,031	509
Erie	60,275	15,551,698	258	6,491	2,477,759	382
Essex	1,308	476,446	364	372	214,725	577
Franklin	3,083	1,138,599	369	568	326,230	574
Fulton	3,393	1,159,158	342	438	223,699	511
Genesee	2,339	637,713	273	255	113,728	446
Greene	2,353	805,283	342	434	239,830	553
Hamilton	175	57,891	331	48	27,921	582
Herkimer	3,913	1,246,517	319	751	363,305	484
Jefferson	6,289	1,968,196	313	340	164,275	483
Lewis	1,291	583,513	452	155	86,715	559
Livingston	2,648	910,442	344	325	150,785	464
Madison	2,871	927,244	323	490	245,265	501
Monroe	48,653	10,131,761	208	1,781	673,682	378
Montgomery	3,351	1,046,182	312	455	222,761	490
Nassau	19,082	2,198,696	115	881	437,151	496
Niagara	12,906	3,160,848	245	1,558	633,148	406
Oneida	14,600	4,043,468	277	1,179	520,112	441
Onondaga	26,259	5,895,075	224	2,022	790,888	391
Ontario	4,065	1,029,456	253	471	208,490	443
Orange	12,007	2,594,346	216	648	305,426	471
Orleans	1,903	724,753	381	336	152,037	452
Oswego	6,228	2,334,811	375	601	310,518	517
Otsego	2,362	887,082	376	487	272,530	560
Putnam	1,149	238,730	208	190	96,000	505
Rensselaer	6,415	1,558,990	243	760	368,222	485
Rockland	11,507	1,971,707	171	145	53,181	367
St. Lawrence	5,741	2,046,852	357	1,196	637,525	533
Saratoga	6,000	2,053,538	342	489	240,891	493
Schenectady	8,727	2,090,694	240	382	157,769	413
Schoharie	1,434	606,556	423	310	169,958	548
Schuyler	898	377,030	420	172	92,750	539
Seneca	1,409	383,048	272	80	38,416	480
Steuben	4,297	1,410,520	328	1,087	489,183	450
Suffolk	33,606	7,921,019	236	1,928	977,929	507
Sullivan	4,280	1,128,393	264	287	168,694	588
Tioga	2,184	935,752	428	378	191,337	506
Tompkins	3,837	809,255	211	359	157,369	438
Ulster	9,326	2,413,844	259	839	457,226	545
Warren	2,973	943,194	317	531	273,975	516
Washington	2,582	1,008,049	390	569	304,349	535
Wayne	3,997	1,328,646	332	551	258,184	469
Westchester	32,957	1,556,154	47	454	197,718	436
Wyoming	1,276	438,731	344	391	172,695	442
Yates	1,041	342,897	329	135	69,175	512

\* Please Note: The 2016 Home Energy Assistance Program Federal Fiscal Year is October 1, 2015 through September 30, 2016.

Table 27  
**HOME ENERGY ASSISTANCE PROGRAM - EMERGENCY\***  
 Number, Total Dollar Amount and Average Dollar Amount of Benefits Authorized - Federal Fiscal Year to Date  
 October 2015

Local District	Emergency			Furnace Replacement			Furnace Repair & Repair/Replacement Estimates		
	Benefits Authorized	Dollar Amount Authorized	Average Dollar Amount	Benefits Authorized	Dollar Amount Authorized	Average Dollar Amount	Benefits Authorized	Dollar Amount Authorized	Average Dollar Amount
New York State	0	\$0	\$0	0	\$0	\$0	0	\$0	\$0
New York City	0	0	0	0	0	0	0	0	0
Rest of State	0	0	0	0	0	0	0	0	0
Albany	0	0	0	0	0	0	0	0	0
Allegany	0	0	0	0	0	0	0	0	0
Broome	0	0	0	0	0	0	0	0	0
Cattaraugus	0	0	0	0	0	0	0	0	0
Cayuga	0	0	0	0	0	0	0	0	0
Chautauqua	0	0	0	0	0	0	0	0	0
Chemung	0	0	0	0	0	0	0	0	0
Chenango	0	0	0	0	0	0	0	0	0
Clinton	0	0	0	0	0	0	0	0	0
Columbia	0	0	0	0	0	0	0	0	0
Cortland	0	0	0	0	0	0	0	0	0
Delaware	0	0	0	0	0	0	0	0	0
Dutchess	0	0	0	0	0	0	0	0	0
Erie	0	0	0	0	0	0	0	0	0
Essex	0	0	0	0	0	0	0	0	0
Franklin	0	0	0	0	0	0	0	0	0
Fulton	0	0	0	0	0	0	0	0	0
Genesee	0	0	0	0	0	0	0	0	0
Greene	0	0	0	0	0	0	0	0	0
Hamilton	0	0	0	0	0	0	0	0	0
Herkimer	0	0	0	0	0	0	0	0	0
Jefferson	0	0	0	0	0	0	0	0	0
Lewis	0	0	0	0	0	0	0	0	0
Livingston	0	0	0	0	0	0	0	0	0
Madison	0	0	0	0	0	0	0	0	0
Monroe	0	0	0	0	0	0	0	0	0
Montgomery	0	0	0	0	0	0	0	0	0
Nassau	0	0	0	0	0	0	0	0	0
Niagara	0	0	0	0	0	0	0	0	0
Oneida	0	0	0	0	0	0	0	0	0
Onondaga	0	0	0	0	0	0	0	0	0
Ontario	0	0	0	0	0	0	0	0	0
Orange	0	0	0	0	0	0	0	0	0
Orleans	0	0	0	0	0	0	0	0	0
Oswego	0	0	0	0	0	0	0	0	0
Otsego	0	0	0	0	0	0	0	0	0
Putnam	0	0	0	0	0	0	0	0	0
Rensselaer	0	0	0	0	0	0	0	0	0
Rockland	0	0	0	0	0	0	0	0	0
St. Lawrence	0	0	0	0	0	0	0	0	0
Saratoga	0	0	0	0	0	0	0	0	0
Schenectady	0	0	0	0	0	0	0	0	0
Schoharie	0	0	0	0	0	0	0	0	0
Schuyler	0	0	0	0	0	0	0	0	0
Seneca	0	0	0	0	0	0	0	0	0
Steuben	0	0	0	0	0	0	0	0	0
Suffolk	0	0	0	0	0	0	0	0	0
Sullivan	0	0	0	0	0	0	0	0	0
Tioga	0	0	0	0	0	0	0	0	0
Tompkins	0	0	0	0	0	0	0	0	0
Ulster	0	0	0	0	0	0	0	0	0
Warren	0	0	0	0	0	0	0	0	0
Washington	0	0	0	0	0	0	0	0	0
Wayne	0	0	0	0	0	0	0	0	0
Westchester	0	0	0	0	0	0	0	0	0
Wyoming	0	0	0	0	0	0	0	0	0
Yates	0	0	0	0	0	0	0	0	0

\* Please Note: The 2016 Home Energy Assistance Program Federal Fiscal Year is October 1, 2015 through September 30, 2016.

Table 28  
**FEDERAL ALL FAMILIES WORK PARTICIPATION RATES**  
TANF, Safety Net Assistance MOE and Combined TANF and Safety Net Assistance MOE  
October 2015

Local District	Combined TANF and Safety Net Assistance MOE			TANF			Safety Net Assistance MOE		
	Rate	Numerator	Denominator	Rate	Numerator	Denominator	Rate	Numerator	Denominator
New York State*	32.9%	27,698	84,389	32.0%	15,908	49,731	34.0%	11,790	34,657
New York City*	36.8%	20,120	54,794	37.5%	11,367	30,340	36.0%	8,753	24,454
Rest of State	23.7%	7,615	32,083	22.3%	4,905	22,021	26.9%	2,710	10,062
Albany	19.2%	188	981	19.0%	126	664	19.6%	62	317
Allegany	18.7%	23	123	18.9%	17	90	18.2%	6	33
Broome	17.5%	174	997	16.7%	114	681	19.0%	60	316
Cattaraugus	32.3%	40	124	33.3%	36	108	25.0%	4	16
Cayuga	9.8%	26	265	9.2%	20	217	12.5%	6	48
Chautauqua	21.7%	178	820	21.7%	107	492	21.6%	71	328
Chemung	15.4%	20	130	13.5%	14	104	23.1%	6	26
Chenango	12.2%	11	90	9.8%	8	82	37.5%	3	8
Clinton	15.6%	22	141	14.3%	15	105	19.4%	7	36
Columbia	12.1%	17	141	12.3%	14	114	11.1%	3	27
Cortland	18.4%	29	158	19.5%	26	133	12.0%	3	25
Delaware	38.1%	16	42	38.1%	16	42	N/A	0	0
Dutchess	15.3%	37	242	13.0%	21	161	19.8%	16	81
Erie	37.7%	1,878	4,978	35.0%	1,214	3,467	43.9%	664	1,511
Essex	11.1%	2	18	11.8%	2	17	0.0%	0	1
Franklin	11.5%	14	122	9.4%	9	96	19.2%	5	26
Fulton	18.4%	9	49	16.7%	8	48	100.0%	1	1
Genesee	17.7%	11	62	16.0%	8	50	25.0%	3	12
Greene	39.3%	42	107	40.0%	30	75	37.5%	12	32
Hamilton	0.0%	0	2	0.0%	0	2	N/A	0	0
Herkimer	12.1%	16	132	14.0%	15	107	4.0%	1	25
Jefferson	11.9%	29	244	12.3%	25	203	9.8%	4	41
Lewis	23.5%	4	17	23.5%	4	17	N/A	0	0
Livingston	12.4%	29	233	11.9%	23	194	15.4%	6	39
Madison	18.9%	18	95	17.6%	13	74	23.8%	5	21
Monroe	18.7%	1,008	5,386	16.8%	577	3,435	22.1%	431	1,951
Montgomery	16.8%	31	184	18.2%	28	154	10.0%	3	30
Nassau	28.7%	548	1,907	27.1%	314	1,157	31.2%	234	750
Niagara	14.8%	132	893	13.2%	81	613	18.2%	51	280
Oneida	23.5%	351	1,491	22.7%	242	1,068	25.8%	109	423
Onondaga	13.1%	297	2,263	11.3%	183	1,623	17.8%	114	640
Ontario	10.7%	21	197	10.2%	17	166	12.9%	4	31
Orange	27.1%	233	859	25.1%	131	522	30.3%	102	337
Orleans	18.7%	28	150	20.8%	22	106	13.6%	6	44
Oswego	11.4%	61	535	11.9%	52	437	9.2%	9	98
Otsego	20.0%	4	20	20.0%	4	20	N/A	0	0
Putnam	25.0%	2	8	16.7%	1	6	50.0%	1	2
Rensselaer	27.4%	203	740	26.8%	141	527	29.1%	62	213
Rockland	38.3%	88	230	40.3%	64	159	33.8%	24	71
St. Lawrence	24.3%	82	337	24.0%	63	262	25.3%	19	75
Saratoga	9.7%	3	31	9.7%	3	31	N/A	0	0
Schenectady	22.1%	132	598	22.9%	91	398	20.5%	41	200
Schoharie	21.1%	8	38	22.2%	8	36	0.0%	0	2
Schuyler	13.1%	8	61	11.8%	6	51	20.0%	2	10
Seneca	18.8%	16	85	19.7%	12	61	16.7%	4	24
Steuben	20.9%	47	225	22.2%	35	158	17.9%	12	67
Suffolk	34.1%	773	2,266	31.7%	496	1,565	39.5%	277	701
Sullivan	28.7%	45	157	29.1%	34	117	27.5%	11	40
Tioga	21.9%	16	73	22.1%	15	68	20.0%	1	5
Tompkins	16.7%	31	186	14.8%	20	135	21.6%	11	51
Ulster	12.5%	68	542	13.5%	54	400	9.9%	14	142
Warren	19.4%	6	31	19.4%	6	31	N/A	0	0
Washington	30.9%	17	55	32.1%	17	53	0.0%	0	2
Wayne	13.1%	19	145	13.1%	17	130	13.3%	2	15
Westchester	24.5%	495	2,019	24.5%	278	1,137	24.6%	217	882
Wyoming	22.5%	9	40	22.9%	8	35	20.0%	1	5
Yates	0.0%	0	18	0.0%	0	17	0.0%	0	1

\* Statewide and New York City participation rates are estimated from federal disaggregated reporting samples, which are the source of the rates used by the United States Department of Health and Human Services to determine if a state has met participation goals. Because the sample size is insufficient to permit rate estimates for non-New York City districts, rates for those districts are derived directly from automated systems data. Thus, Rest of State and New York City numerators and denominators will not sum to the statewide total. Estimates are from third quarter Federal Fiscal Year 2015 samples.

Table 29  
**WORK SANCTION STATUS BY PRESENCE IN FEDERAL ALL FAMILIES WORK PARTICIPATION CALCULATION**  
**TANF, Safety Net Assistance MOE and Combined TANF and Safety Net Assistance MOE**  
**October 2015**

Local District	Combined TANF and Safety Net Assistance MOE		TANF		Safety Net Assistance MOE	
	Sanctioned in the Denominator	Sanctioned Removed From Denominator	Sanctioned in the Denominator	Sanctioned Removed From Denominator	Sanctioned in the Denominator	Sanctioned Removed From Denominator
New York State*	5,512	3,484	2,320	2,560	3,192	924
New York City*	2,858	1,676	1,140	1,017	1,718	659
Rest of State	2,534	1,209	1,213	792	1,321	417
Albany	55	17	21	11	34	6
Allegany	5	6	3	5	2	1
Broome	123	41	50	24	73	17
Cattaraugus	10	5	9	3	1	2
Cayuga	20	6	14	5	6	1
Chautauqua	66	43	30	32	36	11
Chemung	19	2	10	0	9	2
Chenango	5	6	4	4	1	2
Clinton	7	2	3	1	4	1
Columbia	21	6	14	3	7	3
Cortland	3	1	2	1	1	0
Delaware	2	0	2	0	0	0
Dutchess	16	9	7	7	9	2
Erie	241	180	121	119	120	61
Essex	0	1	0	1	0	0
Franklin	7	3	5	2	2	1
Fulton	1	4	1	3	0	1
Genesee	4	7	0	6	4	1
Greene	2	7	1	6	1	1
Hamilton	0	0	0	0	0	0
Herkimer	6	2	5	2	1	0
Jefferson	26	14	19	14	7	0
Lewis	1	1	1	0	0	1
Livingston	3	2	3	1	0	1
Madison	3	2	2	0	1	2
Monroe	522	254	220	158	302	96
Montgomery	13	8	9	6	4	2
Nassau	162	74	91	42	71	32
Niagara	140	35	60	28	80	7
Oneida	128	49	60	35	68	14
Onondaga	258	62	106	45	152	17
Ontario	4	7	3	7	1	0
Orange	57	32	25	15	32	17
Orleans	15	9	6	7	9	2
Oswego	30	18	19	10	11	8
Otsego	1	1	1	1	0	0
Putnam	1	0	1	0	0	0
Rensselaer	42	44	27	32	15	12
Rockland	14	7	10	5	4	2
St. Lawrence	34	22	20	17	14	5
Saratoga	0	1	0	1	0	0
Schenectady	158	43	84	30	74	13
Schoharie	2	0	2	0	0	0
Schuyler	3	3	3	3	0	0
Seneca	6	1	1	1	5	0
Steuben	4	3	2	2	2	1
Suffolk	86	62	42	33	44	29
Sullivan	23	6	16	3	7	3
Tioga	1	0	0	0	1	0
Tompkins	31	7	13	6	18	1
Ulster	55	20	31	13	24	7
Warren	1	3	1	2	0	1
Washington	2	2	2	2	0	0
Wayne	5	4	2	4	3	0
Westchester	88	64	28	33	60	31
Wyoming	2	1	1	1	1	0
Yates	0	0	0	0	0	0

\* Statewide and New York City sanction rates are estimated from federal disaggregated reporting samples, which are the source of such data used by the United States Department of Health and Human Services to determine if a state has met participation goals. Because the sample size is insufficient to permit sanction estimates for non-New York City districts, data for those districts are derived directly from automated systems. Thus, Rest of State and New York City counts may not sum to the statewide total. This table uses a federal definition of sanction and includes only persons who are deemed a work eligible individual and are sanctioned for non-compliance for work or substance abuse requirements. Estimates are from third quarter Federal Fiscal Year 2015 samples.

Table 30  
 TEMPORARY ASSISTANCE CASES WITH EARNED INCOME  
 Cases, Average Gross Earned Income and Average Net Earned Income after Application of Disregards  
 October 2015

Local District	TANF			Safety Net Assistance MOE			Safety Net Assistance Non-MOE		
	Cases	Average Gross Earned Income	Average Net Earned Income	Cases	Average Gross Earned Income	Average Net Earned Income	Cases	Average Gross Earned Income	Average Net Earned Income
New York State	15,282	\$1,003	\$469	11,576	\$1,021	\$468	10,058	\$1,287	\$802
New York City	10,246	1,062	502	8,689	1,040	477	7,551	1,386	905
Rest of State	5,036	884	400	2,887	966	441	2,507	990	491
Albany	109	878	400	91	1,000	455	73	1,261	624
Allegany	15	756	334	10	688	305	13	422	221
Broome	110	872	391	75	934	422	62	940	443
Cattaraugus	20	886	436	3	1,296	603	5	390	191
Cayuga	22	724	317	10	760	337	15	904	436
Chautauqua	109	853	382	79	896	408	61	821	401
Chemung	21	753	330	8	964	433	6	414	185
Chenango	8	550	256	2	952	431	10	374	193
Clinton	11	1,062	606	4	1,078	494	14	895	587
Columbia	14	819	365	5	901	442	8	976	517
Cortland	30	829	370	5	1,011	461	15	514	269
Delaware	7	795	352	0	0	0	6	300	101
Dutchess	37	994	453	18	1,169	555	7	562	288
Erie	642	880	394	433	975	443	496	1,190	558
Essex	1	300	105	0	0	0	3	65	3
Franklin	15	814	362	8	479	193	21	683	328
Fulton	1	910	410	0	0	0	0	0	0
Genesee	9	806	359	2	1,188	549	3	923	473
Greene	25	1,023	466	14	988	453	5	480	298
Hamilton	1	796	353	0	0	0	0	0	0
Herkimer	19	708	311	5	797	361	4	214	107
Jefferson	38	654	284	5	862	386	17	580	270
Lewis	6	633	278	0	0	0	2	457	367
Livingston	27	831	371	12	950	431	14	810	393
Madison	13	977	444	5	1,076	493	1	555	233
Monroe	656	857	385	563	935	427	252	837	413
Montgomery	46	875	392	10	881	406	11	835	427
Nassau	441	934	426	229	968	439	144	827	458
Niagara	112	744	327	79	950	435	51	786	365
Oneida	234	825	368	154	912	411	208	1,242	579
Onondaga	327	850	381	193	1,008	461	235	1,204	578
Ontario	34	702	306	7	1,088	499	7	618	407
Orange	163	978	448	136	974	445	50	945	458
Orleans	13	844	377	10	520	221	11	554	265
Oswego	76	806	359	18	939	424	36	744	342
Otsego	1	1,176	543	0	0	0	7	299	221
Putnam	6	786	358	0	0	0	3	335	250
Rensselaer	136	801	356	69	846	386	59	1,048	513
Rockland	148	932	420	24	1,028	471	62	1,096	546
St. Lawrence	59	751	332	22	753	373	49	594	287
Saratoga	2	936	423	0	0	0	2	93	5
Schenectady	122	962	446	61	1,032	476	33	1,019	501
Schoharie	15	901	406	0	0	0	5	684	461
Schuyler	8	840	376	4	749	330	13	608	267
Seneca	14	812	357	10	1,187	548	7	348	166
Steuben	32	736	324	18	981	445	18	528	284
Suffolk	463	1,023	480	269	1,102	510	203	1,023	589
Sullivan	39	699	305	7	1,108	560	12	793	397
Tioga	15	959	434	2	1,127	518	0	0	0
Tompkins	22	620	230	15	812	361	16	696	342
Ulster	113	862	392	32	760	342	61	853	462
Warren	9	878	389	0	0	0	1	523	216
Washington	11	1,069	490	3	754	332	2	669	344
Wayne	13	878	394	2	380	290	10	702	426
Westchester	387	927	425	156	1,002	461	74	954	540
Wyoming	4	747	328	0	0	0	1	69	0
Yates	5	861	385	0	0	0	3	857	384